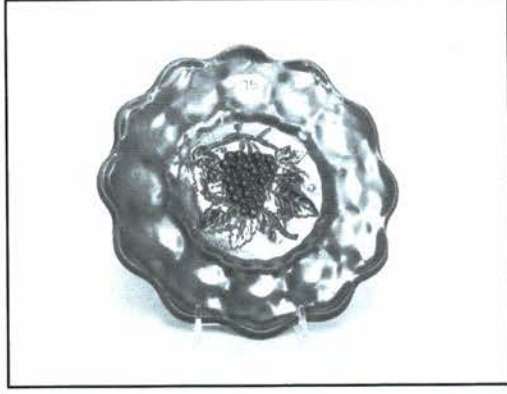
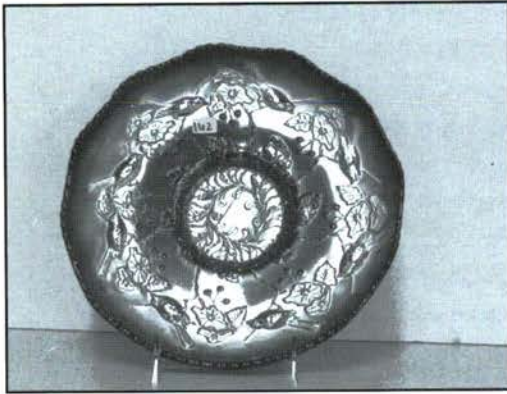
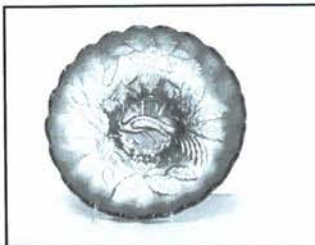
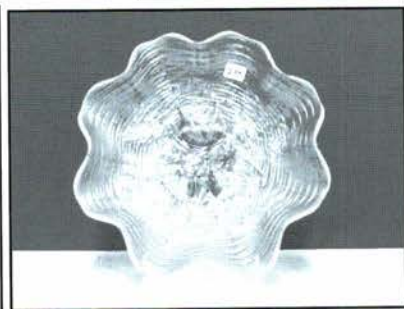
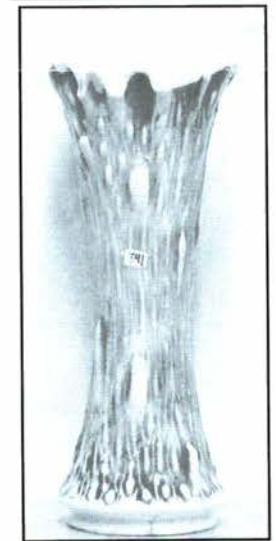
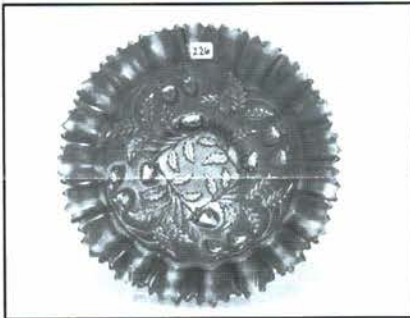
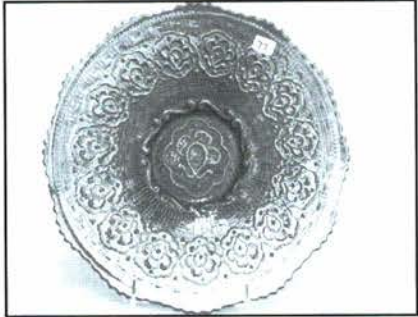


**Carnival Glass Auction- Britt Collection, May 1st 2010 at 10:00 a.m.**



To view HUNDREDS of pictures & LISTING go to [www.jimwrodauction.com](http://www.jimwrodauction.com)



Visit [www.proxibid.com/jimwrodauction](http://www.proxibid.com/jimwrodauction)

proxibid

**Brett & Thelma Britt Collection**

May 1, 2010 Carnival Glass Listing

1	Imp mari Fashion tumbler	49	Fenton mari Illusion bon bon
2	Imp mari Crabclaw tumbler	50	Art Glass shade
3	Imp mari 474 tumbler	51	Mari Daisy & Plum stemmed rosebowl
4	Nwood mari Raspberry tumbler	52	Super Imp elec purple Scroll Embossed mini compote
5	Nwood mari Grape & Gothic Arches tumbler	53	Mburg purple Peacock tail compote
6	Nwood purple Dandelion tumbler	54	Green smooth rays stem spittoon
7	Nwood green Singing Birds tumbler	55	Fenton purple Vintage compote
8	Dugan blue Peacock tumbler. chip on base	56	Fenton light blue Peacock at Urn compote
9	Nwood ice blue Peacock Fountain tumbler	57	Fenton mari Peacock at Urn compote
10	Fenton blue Butterfly & Fern tumbler	58	Fenton mari Peacock at Urn compote
11	Riihimaki "Britt" blue tumbler	59	Fenton mari Holly compote
12	Fenton blue Panelled Dandelion tumbler	60	Fenton Aqua 5" OE hat
13	Dugan mari Vintage tumbler	61	Fenton 5" Sapphire OE hat
14	mari Waterlily tumbler	62	Fenton blue Blackberry Spray stem plate Scarce
15	Cosmos & cane adv. tumbler. JR Millners	63	Fenton 6" Brick Red OE 2 side hat.
16	Mburg purple Diamonds tumbler	64	Nwood IB Poppy pickle dish. RARE
17	Nwood purple Singing Birds mug	65	Nwood killer elec blue Poppy pickle dish.
18	Fenton blue Orange Tree mug (lg)	66	Imp green Pansy pickle dish
19	Nwood dark purple Singing Birds mug	67	Fenton green Vintage single lily epergne
20	Nwood pastel mari Singing Birds mug	68	Scarce Dugan 9" blue Fanciful plate
21	Mari Orange tree mug	69	Nwood 9" mari Strawberry plate
22	Vaseline Orange tree mug	70	Dugan 9" blue round Up plate. Scarce
23	2 blue Wreath roses punch cups w/ vintage int	71	Dugan purple Stork & Rushes berry bowl
24	Blue God & Home Tumbler	72	Fenton mari Holly 2 side hat
24a	Blue God & Home Tumbler	73	mari Panther 5' bowl
25	3 HP blue tumblers	74	Mburg 6" purple Blackberry Wreath 3-1 edge bowl
26	4 Nwood blue Handpainted tumblers	75	Imp 7" elec purple Grape plate. WOW
27	Nwood mari Singing Birds spooner. has bruise on edge	76	Imp 9" elec purple Scroll Embossed plate. Nice
28	Nwood mari creamer	77	Fenton 10" blue Persian Medallion chop plate. very scarce!
29	Nwood Peacock at Fountain mari Creamer	78	Nwood 5' mari Acorn Burr bowl
30	Cosmos & Cane Honey Amber creamer	79	Nwood 5" purple Strawberry bowl. Nice
31	Nwood mari Singing Birds creamer	80	Mburg 7" green Little Stars ruffled bowl
32	Nwood blue Grape & Gothic Arches creamer	81	Dugan 8" mari Round Up ICS bowl. Scarce
33	Imp mari Fashion creamer	82	Dugan 9" mari Windflower plate
34	Nwood purple Singing Birds sugar bowl	83	WOW Imp 5" Scroll Embossed elec purple berry bowl
35	Nwood Green Singing Birds butterdish. Scarce	84	mari Butterfly & berry 5" bowl.
36	West. purple Corinth banana boat	85	WOW Imp 5" Scroll Embossed elec purple berry bowl
37	Mburg purple Hobnail Swirl rosebowl. Lg chip on base	86	MAri 5" Pine Cone ICS bowl
38	Nwood powder blue opal Beaded Cable rosebowl Scarce color	87	Fenton 8" mari Orange Tree 6 ruffled bowl
39	Fenton blue Persian Medallion Hair receiver	88	Mburg 8" green Blackberry Wreath bowl.
40	Dugan PO Honeycomb rosebowl	89	Fenton mari 9" Holly 3-1 edge bowl
41	MAri Florentine 8 1/2" candlestick	90	Fenton 5" mari stemmed panelled plate
42	Mburg olive green Night Stars bon bon. Radium. Very hard to find!	91	Mburg purple Seacoast pin tray
43	Fenton RED Persian Medallion bon bon. Has just a hint of yellow in base	92	Purple Hatpin, unknown pattern
44	Dugan PO Starfish bon bon	93	purple Big Butterfly hatpin
45	Dugan PO Cherries ft'd bowl.	94	ICE BLUE Rooster hatpin
46	Dugan purple Questions Mark bon bon	95	purple Top O Morning hatpin
47	Fenton green Birds And Cherries bon bon	96	purple Throw pillow hatpin
48	Mari Question Marks bon bon	97	Purple unknown hatpin. Nice pattern
		98	Fenton 8" purple Heart & Vine bowl

- 99 Fenton 9" blue Cherry Chain bowl
- 100 Nwood 9" purple Stippled Ray PCE bowl
- 101 Imp elec purple Flute sugar bowl
- 102 Imp elec purple Flute TP.
- 103 Imp elec purple Flute nappy
- 104 Imp 5" elec purple berry bowl
- 105 Nwood 10" purple Stippled rays bowl
- 106 Fenton 8" Green Captive Rose bowl
- 107 Mburg 9" radium purple Zig Zag square bowl w/ CRE.  
Does have a chip on the base
- 108 Dugan mari Windflower bowl
- 109 Fenton 8" mari holly ICS bowl
- 110 Fenton 8" mari holly ruffled bowl
- 111 Fenton 8" mari Thistle bowl
- 112 Fenton 7" green Peacock tail bowl.
- 113 Fenton 7" mari Lions ICS bowl
- 114 Dugan 6" mari Persian garden plate
- 115 Dugan mari Question mark stemmed plate
- 116 Dugan mari windflower ICS bowl
- 117 Fenton 10" blue Persian Medallion 3-1 edge bowl. Nice
- 118 Mburg 6" radium purple Blackberry Wreath ICS bowl
- 119 Fenton 6" mari Persian Medallion plate
- 120 Fenton 8" mari Captive Rose bowl
- 121 MAri Mikato compote. nice
- 122 Fenton 7" purple Pine Cone plate. Scarce
- 123 Fenton 6" blue Persian medallion plate
- 124 Fenton 7" mari Stippled rays plate
- 125 MAri Pansy nappy
- 126 Mburg 5" Peacock at Urn berry bowl
- 127 Fenton purple Coin Spot rosebowl
- 128 Imp green Open Rose deep bowl
- 129 Mburg 9" rad. purple Peacock at Urn Master berry bowl.  
WOW! Great color!
- 130 Imp elec purple Heavy Grape 5" bowl
- 131 Dugan mari Fish scale & Beads. Souvenir of Hershey  
mari bowl
- 132 Fenton 6" mari stemmed plate.
- 133 Imp elec purple Heavy Grape 5" bowl. Nice color
- 134 Dugan 6" elec purple Cherries CRE bowl. Nice Chip on  
edge
- 135 Dugan 6" elec purple Cherries CRE bowl. Nice
- 136 Fenton 8" purple thistle CRE bowl
- 137 Dugan 6" elec purple Petals & Fan CRE bowl. Scarce
- 138 RARE Dugan 6" elec purple Cherries CRE plate. Very nice
- 139 RARE Dugan 6" elec purple Petal & Fan CRE plate
- 140 Mburg green Leaf & little Flowers compote
- 141 Fenton 7" purple Peacock Tail ICS bowl
- 142 Fenton 6" mari Vintage plate
- 143 Dugan 5" Cherries purple bowl
- 144 Dugan 5" Cherries PO bowl
- 145 Fenton 5" Vaseline Blackberry Spray hat
- 146 SUPER Fenton 6" green Pinecone plate. Wonderful plate
- 147 Dugan 5" Cherries PO bowl
- 149 Dugan 7" mari Apple blossom twigs bowl
- 150 Dugan 6" mari Persian Garden plate, chip on point
- 151 Dugan elec purple Circle Scroll JIP hat. Nice
- 152 Fenton green 5" Peacock Tail hat/ Gen. Furniture
- 153 Fenton 5' green Stippled rays bowl
- 154 Dugan 6" white Persian Garden ICS bowl
- 155 Fenton 6" mari Lions bowl
- 156 Killer Nwood 7" elec purple Wild Strawberry HG plate.  
Keeper!
- 157 Nwood 7" purple Fruits & Flowers HG plate
- 158 RARE Nwood 10" blue Peacock at Urn Stippled MIC.  
Very scarce, haven't sold one of these for awhile.
- 159 Nwood 5" mari Peacock at Urn bowl
- 160 Nwood 5" purple Peacock at Urn bowl
- 161 RARE Dugan blue God in Home water pitcher Here is one  
tough pitcher. Great detail
- 162 RARE 10" blue Birds and Cherries low ICS bowl. Very  
rare piece of Fenton! Nice detail.
- 163 Imp. Elec purple Diamond Lace pitcher & 2 tumblers As  
always,,, great color
- 164 Blue Lucille 7pc water set. Always a very desired set.
- 165 Nwood purple Acorn Burr butter dish.
- 165a Nwood purple Acorn Burr Sugar w/ lid
- 165b Nwood purple Acorn Burr spooner
- 166 Nwood purple Acorn Burr 7 pc water set. Scarce
- 167 Nwood purple Peacock at Fountain complete table set.  
Very nice and scarce set
- 168 Imp elec purple Diamond Lace 7 pc water set w/ rare  
ground base tumblers. HAVe only see a couple of these  
tumblers.. here's six in a set.
- 169 Nwood blue Ground Cherries 7 pc water set
- 170 Fenton mari Orange Tree fruit bowl
- 171 MAri Pillar 7 pc water set
- 172 Nwood elec purple Acorn burr 8pc punch set. Great color,  
however it does have a polished point where flute is  
missing. Still a great lookin' set
- 173 Dugan purple Wreath Cherry Banana boat with handle
- 174 Nwood purple 8pc Memphis fruit set. Very nice color!
- 175 Fenton mari Orange Tree fruit bowl
- 176 Nwood mari 8pc Peacock at Fountain punch set. Nice  
color
- 177 Nwood mari 7pc Fruit & Flowers berry set. Scarce to find  
a set together
- 178 Nwood white Raspberry milk pitcher. Crack in handle
- 179 Nwood mari Raspberry water pitcher. Nice
- 180 Imp mari 474 water pitcher
- 181 European Blue Grand Thistle water pitcher
- 182 Fenton blue Horse Medallion 7" ft'd bowl. almost elec
- 183 Nwood elec blue Poinsettia & Lattice ft'd bowl. Great  
color but does have missing point
- 184 Fenton elec blue Stag & Holly 10" ft'd bowl. Really nice  
one!
- 185 Dugan 8" purple Cherries ft'd bowl
- 186 Dugan 8" elec purple Flowers & Frames bowl. Nice
- 187 Fenton 8" Green 2 flowers ft'd bowl.
- 188 Fenton mari 9" Waterlily ft'd bowl
- 189 Dugan 8" purple Cherries tri-corner CRE bowl. RARE
- 190 Dugan 8" mari Cherries ft'd bowl

**JIM WRODA AUCTION SERVICE, LTD**  
5239 ST RT 49 S  
GREENVILLE, OHIO 45331  
937.548.7835

PRESORTED  
FIRST CLASS MAIL  
U.S. POSTAGE  
**PAID**  
CELINA, OH  
PERMIT NO. 99

*FIRST CLASS POSTAGE PAID*



6-8\*\*\*\*\*AUTO\*\*MIXED AADC 458  
LEE MARKLEY  
PO BOX 306  
502 N BROADWAY ST  
MENTONE IN 46539-9531



Vol. 6, Series 2010



***Carnival Glass Auction***  
***Britt collection- Hamilton, Ohio***  
***Saturday May 1st 2010 at 10:00 am***  
***Greenville Auction Center***  
***5239 ST RT 49 S Greenville, Ohio 45331***

**Phone us: 937.548.7835**

**Email us: [office@jimwrodauction.com](mailto:office@jimwrodauction.com)**

**\*\*\*\*\*Mail, E-Mail, Phone and Absentee Bids Policy:\*\*\*\*\***

We do accept absentee bids, Phone bids(\$500.00 minimum bid) and left bids. All bids will be bid competitively against the audience. **ALL** absentee bids must be to us **no later than 2 days** prior to the auction, otherwise we will not guarantee them being entered into our system. All **SUCCESSFUL** absentee, phone and left bids are subject to a \$7.00 convenience fee, plus postage and insurance. We will contact you within a couple of days after the auction. **Please do not call** us to see if you won an item. Laurie will call you if your bid was successful. Extra calls coming in just slows us down on contacting people. If damage is found during the auction or preview we will cancel your bid. If manufacture problems bother you such as air bubbles, pulled points, soda ash, tool marks, or any other manufacturing flaw, please be specific in your mail bids or email bids. If there is a manufacture flaw on an item that we feel is truly distracting, we have noted that in the listing already. **Auction Company has the right NOT** to execute an absentee bid for any reason. **ALL** bids are due **2 days** prior to the auction. ALL items must be paid for within 7 business days after notification.

**PLEASE NOTE:** Laurie will get your items to you as fast as possible but, please allow 10 to 14 days for your items to be shipped.

**To view more pictures & listing please visit our website [www.jimwrodauction.com](http://www.jimwrodauction.com)**

**Terms & Conditions:** Cash, Travelers checks, business or personal checks w/I.D. Visa/ MC & Discover with a 3% clerking fee

proxibid.



*Jim Wroda Auction Services*

5239 ST RT 49 S. Greenville, Ohio 45331

Jim Wroda - Auctioneer



proxibid.

- 191 Nwood pumpkin mari Wishbone bowl. Great color!
- 192 Nwood purple Wishbone bowl.
- 193 Fenton 8" green Dragon & Lotus Ft'd bowl. Scarce color
- 194 Fenton blue Horse Medallion rosebowl
- 195 Fenton 10" mari Stag & Holly ICS bowl
- 196 Fenton 9" mari Peacock & Grape ft'd plate.
- 197 Nwood purple 8" Three Fruits spatula ft'd bowl
- 198 Dugan 7" elec purple Six Petals CRE bowl
- 199 Nwood 8" purple Sunflower ft'd bowl
- 200 Fenton mari Kittens ruffled bowl
- 201 Fenton mari Kittens 4 sided plate
- 202 Fenton mari Kittens 2 sides up plate
- 203 Nwood 8" green Sunflower spatula ft'd bowl
- 204 Dugan 9" PO Soutache' CRE plate
- 205 Nwood AO Bushel Basket
- 206 Nwood Rootbeer Bushel Basket- Odd color w/ nice irid!
- 207 Nwood blue Bushel Basket. Nice color
- 208 Nwood white 8 sided Bushel Basket.
- 209 IG Swan novelty
- 210 IG Swan novelty
- 211 Pink Swan novelty
- 212 lite PO Swan novelty. Opal mainly on top of head
- 213 Nwood green G&C ft'd banana boat w/ nice color
- 214 Nwood purple G&C breakfast cream/sugar
- 215 Nwood purple G&C butterdish Nice
- 216 Nwood elec purple G&C Sweetmeat
- 217 Nwood elec purple G&C cracker jar. NICE
- 218 Nwood G&C purple spooner
- 219 Nwood purple G&C cologne bottom. good color
- 220 Nwood purple G&C butterdish
- 221 Imp elec purple Grape carafe. Super nice!
- 222 Nwood 8" purple Greek Key ruffled bowl
- 223 Fenton 9" blue Peacock & Grape bowl
- 224 European 9" elec purple 4 Flowers variant bowl. great color!
- 225 Nwood 9" purple Wishbone PCE bowl
- 226 Nwood 9" elec blue Stippled Strawberry PCE bowl. WOW!
- 227 Fenton 8" blue Holly ruffled bowl
- 228 Nwood elec blue Good Luck ruffled bowl. nice
- 229 Nwood 8" ren. blue Good Luck stippled ruffled bowl. RARE color but does have polished point. Very scarce
- 230 Nwood 9" elec purple Embroidered Mums ruffled bowl
- 231 Fenton 9" blue Peacock at Urn bowl. Nice
- 232 Nwood 9" purple stippled rays ruffled bowl
- 233 Mburg 9" radium purple Rays & Ribbons ICS bowl. Whew! Heres a dandy!
- 234 VERY RARE European 11" 4 flowers vari chop plate. 1st one of these we have sold. Great color!
- 235 Nwood AO Rose Show ruffled bowl. Always a hit
- 236 Nwood 9" IB Heart & Flowers ruffled bowl
- 237 Dugan 9" white Round Up low ICS bowl.
- 238 Dugan 9" white Fanciful low ICS bowl
- 239 Smoke Imperial Grape compote
- 240 Nwood elec purple G&C Ig compote. SUPER NICE
- 241 Nwood 9" purple G&C PCE bowl
- 242 Nwood 9" elec purple G&C plate w/PB.
- 243 Nwood 9" purple G&C PCE bowl
- 244 Dugan elec purple Grape Delight rosebowl
- 245 Imp. ele purple 5" Grape ruffled bowl. Sweet!
- 246 Dugan blue Grape Delight nut bowl
- 247 Dugan elec purple Vintage powder jar. Scarce
- 248 Imp Grape blasting elec purple wine decanter but no stopper. you'll love it!
- 249 Nwood pastel mari Peacocks PCE bowl.
- 250 Nwood mari Peacocks PCE bowl
- 251 Nwood horehound 9" Peacocks plates. Nice Does have a point chip
- 252 Nwood 9" IG Peacocks plate
- 253 Nwood 9" green Strawberry ruffled bowl
- 254 Mburg mari Trout & Fly ruffled bowl. Nice
- 255 Dugan mari 8" Pony 10 ruffled bowl
- 256 Fenton 9" purple ribbon Tie 3-1 edge bowl
- 257 Imp. 9" mari Acanthus plate
- 258 Fenton 9" mari holly plate
- 259 fenton 9" green stippled ray tricorner bowl
- 260 RARE Fenton 8.5" sapphire Ribbon Tie 3-1 edge bowl RARE COLOR and Super nice!
- 261 Fenton 8" mari Coin Dot 3-1 edge bowl
- 262 Nwood 9" lav Peacocks ruffled bowl
- 263 Nwood 9" mari Peacocks stippled ruffled bowl. thin base
- 264 Dugan 9" PO Round Up low ruffled bowl
- 265 Dugan 9" purple Round up low ruffled bowl
- 266 Nwood purple G&C pin tray
- 267 Nwood purple G&C hatpin holder. Very nice color
- 268 Nwood purple G&C shot glass
- 269 Nwood purple G&C powder jar
- 270 Nwood purple G&C 8 pc. punch set. Very nice color
- 271 Nwood purple G&C 7pc water set.
- 272 Nwood purple G&C 7pc berry set. All of this G&C has very nice color!
- 273 Nwood purple G&C 6" plate
- 274 Nwood 5" purple G&C stem sauce
- 275 Fenton blue Vintage ferner
- 276 Nwood purple G&C whimsy gravy. made from cup
- 277 Nwood 6" elec purple G&C HG plate
- 278 Nwood 7" purple G&C HG plate
- 279 Nwood elec purple G&C candlesticks
- 280 Fenton 8" purple G&C ft'd bowl
- 281 HOT!!! Nwood elec purple G&C low fruit bowl. REALLY NICE!!
- 282 Imp. 8" elec purple Grape ruffled bowl. Solid elec irid all over!
- 283 Nwood purple G&C midsize punch base
- 284 Fenton purple Floral & Grape tumbler
- 285 Nwood purple G&C tumbler
- 286 Nwood purple G&C tumbler
- 287 Imp Grape elec purple tumbler. WOW

- 288 Nwood 8" mari G&C ft'd bowl
- 289 Nwood mari G&C 8 pc punch set. Very nice color
- 290 Fenton 7" G&C mari ruffled bowl
- 291 Nwood mari STIPPLED G&C powder jar with lid
- 292 Nwood mari G&C dresser tray. Scarce
- 293 Nwood mari G&C covered compote. Scarce color
- 294 Nwood 7" mari G&C bowl
- 295 Fenton mari G&C low fruit bowl w/ PM int.
- 296 Nwood mari G&C stippled bon bon
- 297 Nwood 5" mari G&C berry bowl
- 298 Nwood 5" mari G&C berry bowl
- 299 Nwood 9" mari G&C plate w/ BW back
- 300 Nwood mari G&C Shot glass
- 301 Imp grape mari wine
- 302 Dugan Many fruits punch cup- mari
- 303 Nwood mari G&C hat
- 304 Nwood pumpkin mari G&C hatpin holder. DARK!
- 305 Nwood mari G&C gravy made from tumbler
- 306 Imp mari Grape cup and saucer
- 307 Fenton 7" mari G&C ft'd bowl
- 308 Nwood 10" green G&C ruffled bowl. Scarce
- 309 Imp 9" Aqua/Teal Grape plate, Scarce
- 310 Nwood 10" green G&C ruffled bowl. Scarce
- 311 Fenton green G&C low fruit bowl w/ PM int.
- 312 Nwood green G&C gravy made from punch cup
- 313 Nwood 6" green G&C HG plate. Nice
- 314 Nwood green G&C STIPPLED bon bon. Super
- 315 Fenton green 7" G&C ft'd bowl.
- 316 Nwood green G/C stippled cup
- 317 Nwood green 5" G/C bowl
- 318 Imp 6" elec purple Morning glory vase
- 319 Dugan 7" PO Wide Rib vase w/ Spittoon shape top. SCARCE
- 320 Nwood 8" green Tree Trunk vase
- 321 Fenton 8" mari Thumbprint vase
- 322 Mari 6" Morning Glory vase
- 323 Dugan 6" PO wide rib flared vase, cracked
- 324 PO 10" rib vase
- 325 Green 12" 4 Pillars vase, Howard furniture
- 326 Mari Curled Rib vase
- 327 Mari 9" Fine Rib
- 328 Mari 11" Beaded Bulls Eye vase
- 329 Nwood 12" mari Fine Rib vase
- 330 Dugan PO 11" Spirolex vase
- 331 Dugan 12" mari Target vase
- 332 Nwood 12" green Thumbprint vase
- 333 Nwood green 12" 4 Pillars vase
- 334 Imp 8" mari Ripple vase
- 335 Nwood 12" AO 4 Pillars vase
- 336 Nwood 12" Sapphire Opal 4 Pillars vase RARE color but has been restored
- 337 Imp 13" smoke Freefold vase
- 338 Nwood 13" mari Tree Trunk midsize vase
- 339 Imp mari 14" Ripple vase
- 340 Mburg? 13" mari 4 pillars vase
- 341 RARE!!! Nwood 18" custard Tree Trunk funeral vase w/ nutmeg. Very RARE item. Does have a 2" flute missing. Too bad
- 342 Fenton 12" purple Diamond Rib vase
- 343 Nwood 13" green Tree Trunk midsize vase
- 344 Fenton 16" purple Rustic midsize vase
- 345 Fenton mari 19.5" rustic Funeral vase Very nice vase
- 346 Dugan 8" purple Lattice & Points vase
- 347 West. 8" purple Corinth vase
- 348 Mari morning glory vase
- 349 Imp 15" elec purple Morning Glory funeral vase Has GREAT irid!
- 350 Dugan 8" mari Lined Lattice vase
- 351 Fenton mari Beaded Knots vase
- 352 Nwood 12" mari Fine Rib vase
- 353 Dugan elec purple Lined Lattice vase w/ peg feet
- 354 Imp 7" mari Ripple vase
- 355 Nwood 9" purple Jester cap vase
- 356 Nwood 10" purple Tin Rib vase
- 357 Fenton 13" purple April Showers vase
- 358 Nwood 7" purple Tree Trunk vase
- 359 Nwood 8" IG Drapery vase
- 360 12" mari vase, Pattern and maker?
- 361 Fenton 14" mari Bullseye & Beads vase. Great color
- 362 Dugan 7" PO Wide Rib vase w/ spittoon shape top
- 363 Mari 8" Morning Glory vase
- 364 8" mari Twigs vase
- 365 West purple JIP vase
- 366 2 mari 8" vases
- 367 2 Pastel mari 8" Freefold vases
- 368 Imp 9' elec purple Ripple Vase
- 369 Imp 12" mari Vase
- 370 Dugan 5" squatty mari Lined Lattice vase
- 371 Imp 9" mari Ripple Vase
- 372 Duagn 9" purple Spirlex vase
- 373 Imp 9" mari Smooth Panels midsize vase
- 374 Dugan PO 6.5" squatty Wide Rib vase
- 375 Imp 5" mari Smooth Panels vase
- 376 Green 6" Morning Glory vase
- 377 Imp 8" mari Morning Glory vase
- 378 Imp smoke 7" Morning Glory vase
- 379 Nwood mari Drapery vase