

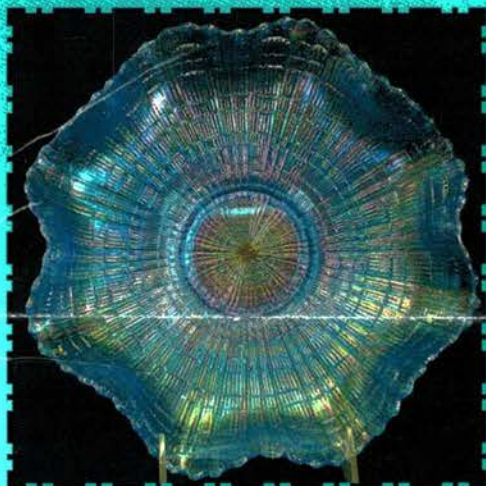
Heart of America Carnival Glass Club Convention

# Auction

Saturday, April 24, 2010 -- 9:30 A.M.

## *The Joyce Seale Collection*

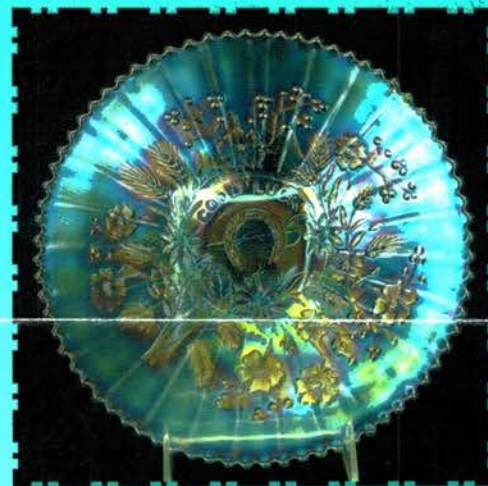
Embassy Suites Airport Hotel • 7640 NW Tiffany Springs Parkway  
Kansas City, Missouri • Call (816)891-7788 for reservations



10



17



25



149



101



32

JIM & JAN SEECK

*Seeck Auctions*

641-424-1116

# Heart of America Carnival Glass Club Convention

**Saturday, April 24, 2010 -- 9:30 A.M.**

**Embassy Suites Hotel – Kansas City, MO**

**NO BUYER'S PREMIUM – OPEN TO THE PUBLIC**



## **THE JOYCE SEALE COLLECTION**

Preview: Friday Evening

WOW! She did it again. Joyce Seale has put together a superb collection of Carnival Glass. It is with pleasure that will be offering Joyce's collection for auction without reserve at the HOACGA Convention this year. Joyce and her husband Bobby are from Texas and are active in many of the clubs including the Texas Carnival Glass Club and HOACGA. Joyce has such a wonderful eye for Carnival Glass. Not only are many of her pieces extremely rare but also pretty, super, fantastic, electric as you will see these words used over and over in the descriptions of her glass. If you like quality Carnival Glass, you need to come to this auction.

Lots of educational and fun activities will be happening at the HOACGA convention. Don't miss the HOACGA convention and don't miss this fabulous auction. The auction is open to the public. Bring friends; bring new collectors. Nothing is more exciting than a great Carnival Glass Auction!

**Don't forget to check out our website to view pictures of each piece!  
[www.seeckauction.com](http://www.seeckauction.com)**

**Also, please email us and we will put you on our email mailing list for auction notices.**

Reservations can be made by calling the hotel directly at 816-891-7788. Ask for reservations and mention the HOACGA Convention. If you have a problem or questions about reservations at the hotel or questions about the convention, please call Bob Grissom at: 816-356-5320. Cut-off date for special rates is April 1st.

**Visit the Heart of America Carnival Glass Association on the Internet at: [WWW.HOACGA.ORG](http://WWW.HOACGA.ORG)**

**Terms:** Cash or Check, VISA and MasterCard accepted w/ proper ID. **4% Clerking Fee** on all purchases except for payment of cash or check. Announcements made day of sale take precedence over any printed information.

### **LIVE PHONE BIDDING POLICY**

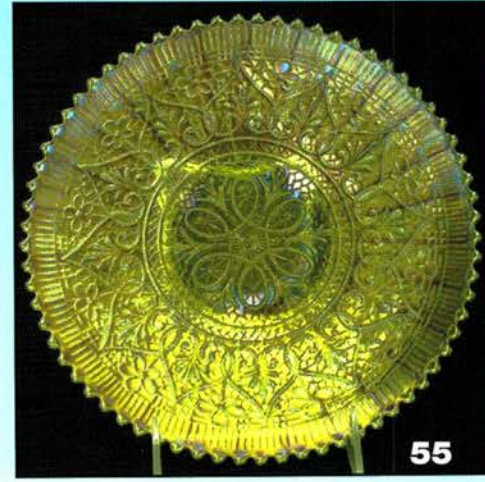
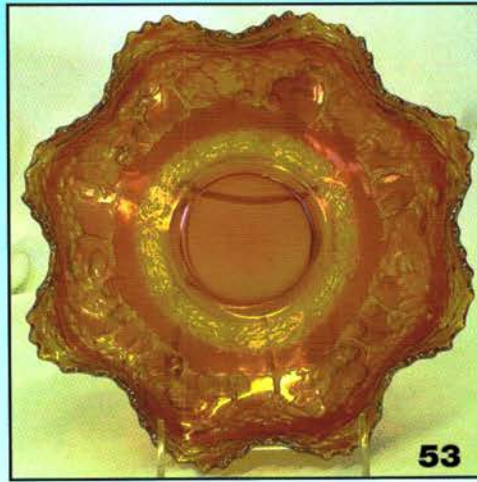
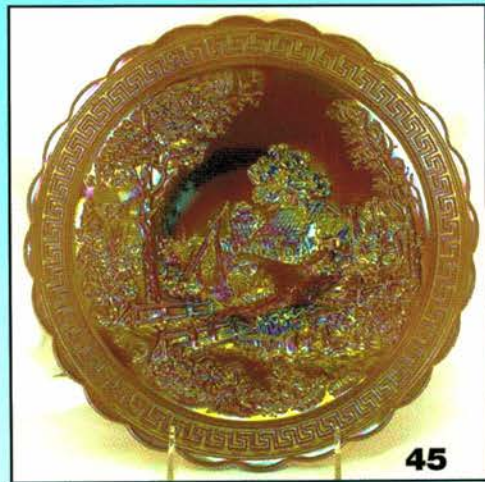
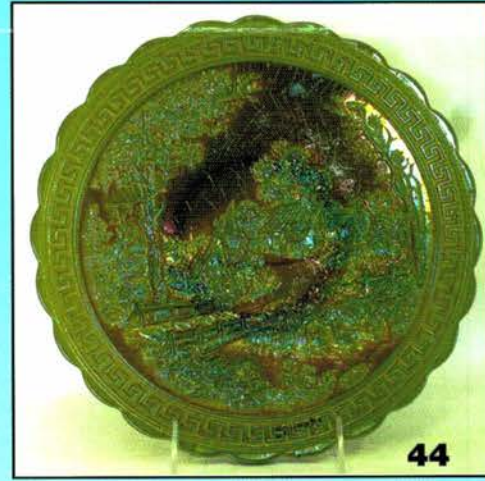
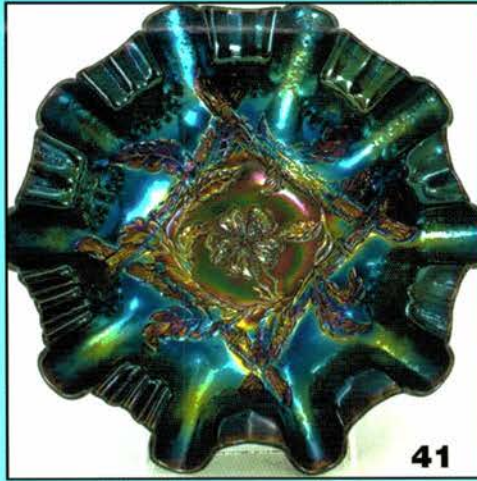
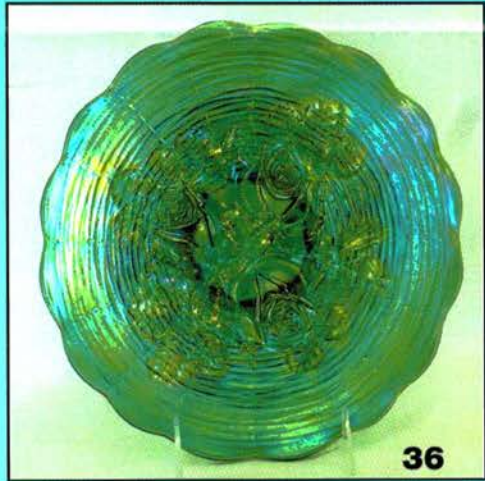
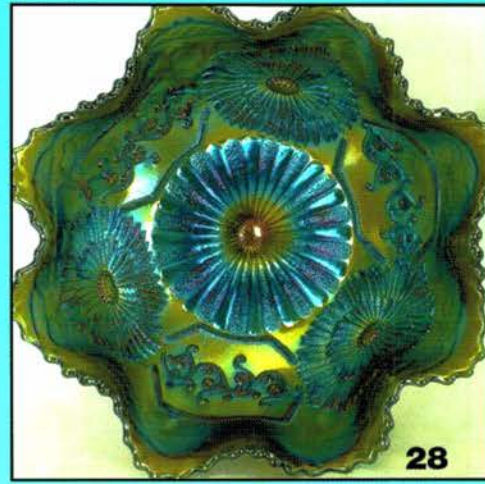
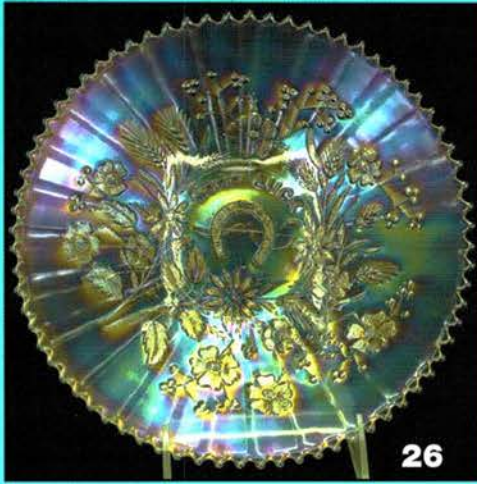
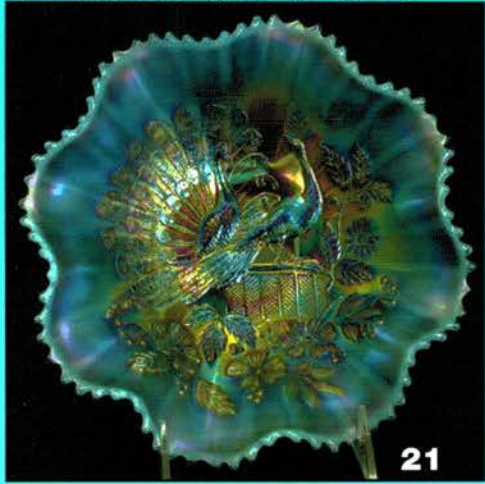
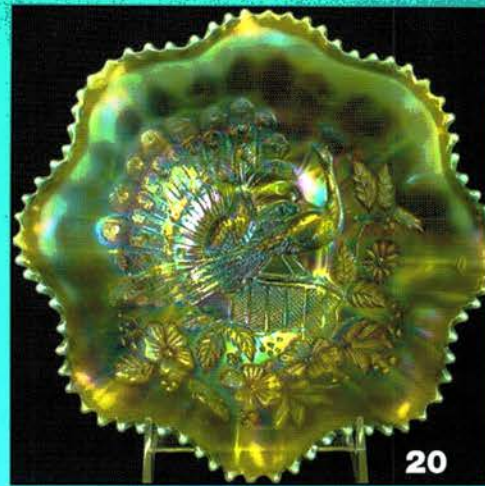
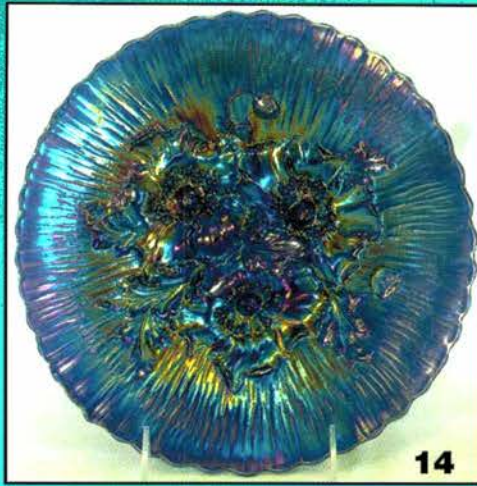
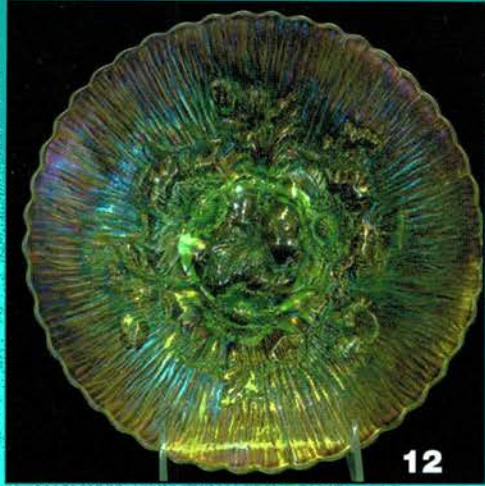
1. If you would like to participate in live phone bidding, contact us by the Tuesday before the auction (April 20th).
2. Live Phone Bidding is only available on pieces with an estimated sale price of \$500 or more.
3. We will need to know the lot# and the phone number that you can be reached at on the day of the auction.
4. We will also need your home phone number if different than number provided in #3.
5. Shipping, Insurance & \$7.00 fee will be charged on each successful bid.
6. Please call with questions: 641-424-1116.

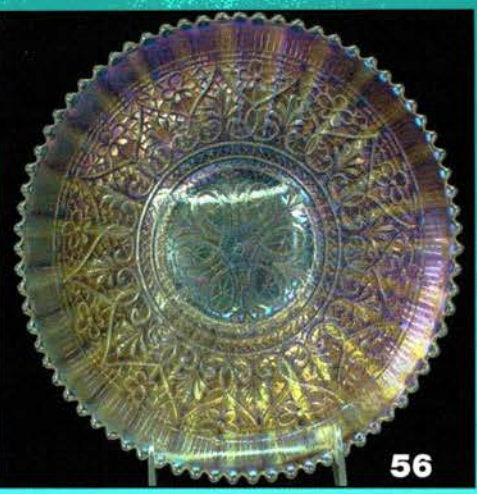
### **ABSENTEE BID POLICY**

1. Write-in bids will be accepted by sending the numbers of the item(s) desired and the amount bid on each to:  
**Seeck Auctions, PO Box 377, Mason City, Iowa 50402.**
2. You may call in your bids previous to the auction at (641)424-1116.
3. You may email your bids to us: **[jimjan@seeckauction.com](mailto:jimjan@seeckauction.com)**. Continue to include the numbers of the item(s) you would like to bid on and amount bid on each, please include your telephone number.
4. There is a **\$7 handling charge** for each successful bid. Shipping and insurance charges are additional.
5. Bidders will be notified by phone/email if their bid(s) are successful. This will be done 1 - 3 days after the auction.
6. Please have all bids in by **Tues., April 20th**. All bids (by mail, phone or email) after this date may not be carried out.
7. Please place bids in the following increments: \$1 to \$300 - \$5 increments \$300 up - \$25 increments.
8. **If you do not receive an item that sold for less than your bid, assume we cancelled your bid because the piece of glass had below average color, manufacture problem, damage or was not listed correctly.**
9. Auction results are posted on our website within 2 weeks of the auction (depending on drive time home from the sale.)

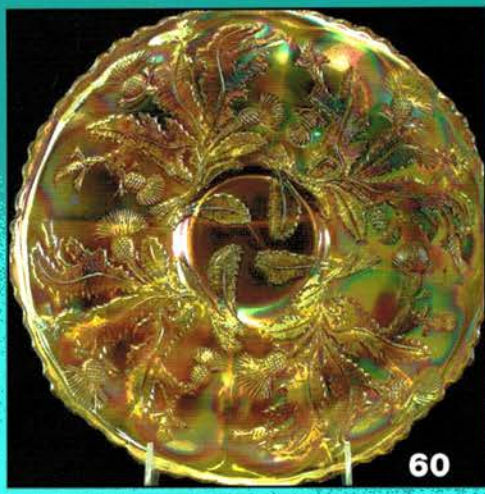
1. Ripple 10" vase, 2 3/4" base - purple  
 2. Ripple 12" vase, 2 3/4" base - amber - pretty  
 3. Ripple 10 1/2" vase, 2 3/4" base - marigold  
 4. Ripple 8" vases, 2 3/8" bases (2) - marigold - choice  
 5. Columbia ruffled compote - purple - absolutely incredible, minor roughness on edge  
 6. Banded Portland cvd puff box - light marigold  
 7. Cologne bottle - marigold - non-American  
 8. Perfume w/ feather stopper - marigold  
 9. Perfume w/ star stopper - marigold  
 10. PLAID RUFFLED BOWL - CELESTE BLUE - UNBELIEVABLY RARE, A BEAUTIFUL CELESTE PIECE, CAN'T IMAGINE IT ANY PRETTIER  
 11. Plaid 9" plate or low IC bowl - amethyst - extremely rare color for this pattern, pretty  
 12. Poppy Show 9" plate - ice green - very rare, pretty  
 13. Poppy Show 9" plate - ice blue - very scare, nice  
 14. Poppy Show 9" plate - blue - electric & super, highly desirable especially when they look like this  
 15. Poppy Show 9" plate - marigold - pumpkin, dark, super!!  
 16. Vintage fernery - blue - electric, not your ordinary fernery  
 17. HEAVY IRIS TANKARD 7 PC. WATER SET - PURPLE - THIS IS AN UNBELIEVABLE SET, THE IRIDESCENCE JUST JUMPS OUT AT YOU  
 18. Orange Tree IC shaped bowl - green - fantastic, rare color  
 19. Orange Tree IC shaped bowl - marigold - dark, dark, super  
 20. PEACOCKS RUFFLED BOWL W/RIBBED BACK - LIME GREEN OPAL - MAYBE THE RAREST COLOR OF THIS HIGHLY SOUGHT AFTER PATTERN, SUPER PRETTY  
 21. Peacocks ruffled bowl w/ribbed back - aqua opal - iridescence is gorgeous on this bowl, pastel  
 22. Peacocks ruffled bowl w/plain back - white - frosty, super  
 23. Peacocks ruffled bowl w/ribbed back - purple - super nice  
 24. Fashion ruffled compote - smoke - very rare, nice  
 25. GOOD LUCK 9" PLATE W/RIBBED BACK - ICE BLUE - DARK COLOR W/FANTASTIC IRID., EXTREMELY RARE, A GREAT PLATE  
 26. GOOD LUCK 9" PLATE W/RIBBED BACK - WHITE - EXCEPTIONALLY RARE & SUPER PRETTY  
 27. Fishnet & Poppy 6" vase - red - rare  
 28. Mikado giant ruffled compote - emerald green - super blue irid., rare color, WOW  
 29. Mikado giant ruffled compote - blue - fabulous multi-colored irid., beautiful  
 30. Mikado giant ruffled compote - marigold - pastel irid., absolutely beautiful  
 31. Waterlily ftd IC shaped master berry bowl - blue - electric & fantastic  
 32. ACORN BURRS 8 PC. PUNCH SET - WHITE - EXTREMELY RARE, FROSTY & BEAUTIFUL  
 33. Acorn Burrs 8 pc. punch set - green - super pretty, one point restored  
 34. Acorn Burrs punch bowl base - ice green - who is the lucky winner with the top?  
 35. Holly & Berry 7" ruffled bowl - purple - electric & super  
 36. ROSE SHOW 9" PLATE - EMERALD GREEN - EXTREMELY RARE, SUPER BLUE IRID.  
 37. Rose Show 9" plate - ice blue - super pretty example  
 38. Rose Show 9" plate - green - very pretty for this green example  
 39. Rose Show 9" plate - amethyst - super, beautiful for these  
 40. Rose Show 9" plate - marigold - flat, pretty & a dark one  
 41. Apple Blossom Twigs 3 in 1 edge bowl - purple - absolutely dynamite!  
 42. Jeweled Hearts ftd water pitcher - marigold - dark, super  
 43. Jeweled Heart tumbler - marigold  
 44. NUART HOMESTEAD CHOP PLATE - EMERALD GREEN - FANTASTIC STRETCHY IRID., GR-RRRRRRRRREAT!
45. NUART Homestead chop plate - amber - fantastic, rare & beautiful  
 46. Homestead chop plate - purple - this has to be one of the very best I've seen  
 47. Persian Medallion bonbon - celeste blue - rare, rare  
 48. Imperial Flute water pitcher - purple - an Imperial pitcher at its best, super  
 49. Imperial Flute #2 tumbler - purple - pretty  
 50. Horned Owl hatpin - purple - rare & desirable  
 51. Owl hatpin - blue - non-iridized  
 52. Floral & Optic ftd round bowl - purple - super pretty, rare color  
 53. PETER RABBIT RUFFLED BOWL - MARIGOLD - ABSOLUTELY INCREDIBLE DARK, RADIUM IRID., FANTASTIC, UNIQUE BOWL  
 54. Fantail ftd IC shaped bowl - blue - electric & super  
 55. Hearts & Flowers 9" plate w/ribbed back - lime green - super rare & beautiful  
 56. Hearts & Flowers 9" plate w/ribbed back - white - super irid. & very frosty, rare  
 57. Hearts & Flowers 9" plate w/ribbed back - marigold - pumpkin dark, fantastic!  
 58. Enameled Dianthus tankard water pitcher - ice green - very rare, nice  
 59. Enameled Dianthus tumbler - ice green  
 60. THISTLE 9" PLATE - MARIGOLD - EXTREMELY RARE PLATE, ONE OF THE HARDER FENTON PLATES TO FINE, BEAUTIFUL  
 61. Thistle 9" plate - green - very rare & desirable  
 62. Hobstar Flower ruffled compote - purple - super  
 63. GRAPE & CABLE FERNERY - EMERALD GREEN - SUPER, SUPER RARE PIECE OF GLASS IN GREEN PLUS UNBELIEVABLY PRETTY  
 64. Rustic 5 1/2" squatty vase - white  
 65. N's Stippled Peacock at Urn master IC bowl - blue - electric & super, maybe the best stippled one I've sold  
 66. N's Stippled Peacock at Urn master IC bowl - marigold - another beauty, scarce  
 67. N's Peacock at Urn master IC bowl - white - very unusual radium irid. that makes the glass look clear, neat piece  
 68. N's Peacock at Urn IC sauce - ice blue - pretty  
 69. N's Peacock at Urn IC sauce - blue - pretty  
 70. LEAF CHAIN 7" PLATE - ICE GREEN - MAYBE THE ONLY ONE KNOWN, SUPER PRETTY WITH FABULOUS IRID.  
 71. Leaf Chain 7" plate - celeste blue - extremely rare, never seen another, lacks irid., has chip on back edge  
 72. Enameled Forget Me Not on Banded Drape tankard water pitcher - green - super pretty, very hard to get, a great enameled pitcher  
 73. Enameled Forget Me Not tumblers (3) - green - choice  
 74. Peacocks 9" plate w/ribbed back - blue - spectacular, one of the best examples, this one will jump off your wall  
 75. Peacocks 9" plate w/ribbed back - green - rare & pretty, very close to calling this emerald  
 76. Peacocks 9" plate w/ribbed back - smokey lavender - a neat base color w/pretty irid.  
 77. Peacocks 9" plate w/ribbed back - purple - fantastic  
 78. Peacocks 9" plate w/ribbed back - ice green - great  
 79. Peacocks 9" plate w/ribbed back - marigold - dark & yes, super!  
 80. Fruits & Flowers bonbon - ice blue - dark & pretty  
 81. Blackberry Open Edge 7" plate - white - extremely rare, nice  
 82. Blackberry Open Edge 7" plate - marigold - dark, nice  
 83. Waterlily ftd ruffled sauce - reverse amberina opal - very hard to find, has red tips  
 84. Waterlily ftd ruffled sauce - red - super pretty example  
 85. Leaf Chain 9" plate - amethyst - seldom to find in amethyst, this one has super irid., WOW

- 1500 86. Leaf Chain 9" plate - blue - fantastic electric blue irid., beautiful
87. Leaf Chain 9" plate - marigold - super pretty irid.
- 250 88. Octagon small size water pitcher - purple - electric & fantastic, very hard to get
89. Luster Rose spooner - purple - pretty
- 1900 90. STIPPLED THREE FRUITS 9" PLATE W/RIBBED BACK - ICE BLUE - SUPER PRETTY PLATE, EXTREMELY RARE, NOT MANY AROUND
- 2200 91. Stippled Three Fruits 9" plate w/ribbed back - aqua opal - super good opal w/pretty pastel irid.
92. Stippled Three Fruits 9" plate w/ribbed back - blue - super electric blue highlights
93. Stippled Three Fruits 9" plate w/ribbed back - purple - electric, fantastic
- 2200 94. LITTLE DAISIES DEEP ROUND BOWL - MARIGOLD - DARK & SUPER, ONLY ONE I HAVE SEEN IN THIS SHAPE, A GREAT PIECE
- 2800 95. Concord CRE bowl - blue - fantastic, the grapes are covered w/blue irid. and jump out at you
- 850 96. Captive Rose 9" plate - amethyst - fantastic example of this rare color
- 525 97. Captive Rose 9" plate - green - hate to keep repeating myself but fabulous
98. Captive Rose 9" plate - blue - nice!
99. Captive Rose 9" plate - marigold - fantastic example of what marigold should look like
100. Three Fruits ruffled bowl w/plain back - green - pretty
- 4000 101. TREE TRUNK 19 1/2" FUNERAL VASE W/PLUNGER BASE - BLUE - ELECTRIC & FABULOUS, CAN'T IMAGINE ONE PRETTIER
102. Orange Tree loving cup - marigold
- 1360 103. Concord 9" plate - green - super pretty & very rare, a highly desired Fenton plate
- 550 104. Concord 9" plate - amethyst - rare & pretty, another goodie
- 650 105. Concord 9" plate - marigold - maybe the rarest color especially to find pretty like this one
- 850 106. Fishscale & Beads 7" plate - purple - electric irid.
- 800 107. Orange Tree Scroll tankard water pitcher - blue - a super example, one of my favorite pitchers
108. Orange Tree Scroll tumbler - blue
- 650 109. Orange Tree Scroll tankard water pitcher - marigold - dark, pretty, a great example
110. Sun's Up hatpins (3) - lavender - choice
111. Good Luck PCE bowl w/ribbed back - blue - electric, super
- 1200 112. Holly ruffled bowl - marigold on moonstone - absolutely fantastic & rare
113. Imperial Grape ruffled bowl - purple - electric
- 1200 114. Embroidered Mums ruffled bowl w/ribbed back - aqua opal - extremely rare & highly desirable, nice opal
115. Embroidered Mums ruffled bowl w/ribbed back - ice blue - nice color, pretty
116. Embroidered Mums ruffled bowl w/ribbed back - blue - electric, pretty!
117. Embroidered Mums ruffled bowl w/ribbed back - lavender - hard color to find
- 500 118. Acorn Burrs water pitcher - marigold - super pretty, lots of pinks
- 1550 119. Heavy Grape chop plate - purple - perfectly iridized! SUPERB
120. Fanciful 9" plate - white - super
- 2800 121. N's Peacock at the Fountain 4 pc. table set - ice blue - rare, pretty set
- 800 122. Gothic Arches 9 1/2" vase, 8 1/2" mouth - smoke - has beautiful amber color irid., nice
- 750 123. Spector's Department Store Heart & Vine 9" plate - marigold - super example for these, a beauty
124. Cobblestone ruffled bowl - purple - super
- 800 125. Enameled Forget Me Not 7 pc. tankard water set w/Three Band blank - green - very rare & pretty
126. Enameled Forget Me Not tankard water pitcher w/Three Band blank - amethyst - very pretty
127. Enameled Forget Me Not tumblers (2) - amethyst - choice
- 600 128. Enameled Forget Me Not 6 pc. tankard water set w/Three Band blank - marigold - very nice set, dark all the way down
- 800 129. Open Rose 9" plate - purple - super pretty, scarce
130. Wishbone tri-cornered ftd dish - marigold - seldom sold, very pretty
- 2200 131. WILD BLACKBERRY 9" PLATE - AMETHYST - EXTREMELY RARE, ONLY ONE KNOWN, WOW
132. Stippled Good Luck ruffled bowl w/ribbed back - marigold - super pink irid.
- 3100 133. Stretch Glass round punch bowl & base - red - these are extremely rare, highly desirable, super irid. on the inside of the bowl
134. Double Stemmed Rose dome ftd IC shaped bowl - blue - pretty, scarce color
135. Holly 9" plate - amethyst - scarce color, a nice one!
- 1400 136. Holly 9" plate - blue - absolutely incredible, maybe the best I've ever sold
- 700 137. Holly 9" plate - marigold - dark & pretty
138. Holly 9" plate - marigold - fantastic yellow irid., a pastel beauty
- 500 139. Holly 9" plate - white - frosty & fantastic!
- 800 140. Fashion water pitcher - purple - one of the best, rare
141. Caroline hdd basket - peach opal
- 1100 142. N's Peacock at Urn chop - purple - great example, fabulous irid.!
143. Corinth JIP vase - blue opal - chip on base
- 900 144. Vintage 9" plate - blue - super rare plate plus pretty, another hard to find Fenton plate
145. King Spider hatpin - purple - rare, nice
146. Lizard hatpin - purple - scarce, has silver irid.
147. Nippon PCE bowl w/ribbed back - ice blue - pretty
148. Nippon PCE bowl w/ribbed back - purple - super pretty!
- 4700 149. PEACOCK AT THE FOUNTAIN 8 PC. PUNCH SET - WHITE - FROSTY & PRETTY, A BEAUTIFUL SET!
- 725 150. Peacock at the Fountain 7 pc. punch set - marigold - dark & fantastic, a very beautiful set
151. Flowers & Frames dome ftd ruffled bowl - purple - super
- 1100 152. Leaf Chain 9" ruffled bowl - ice green - super pretty irid., rare, rare, rare
- 650 153. Leaf Chain 7" ruffled bowl - ice green - absolute match to the 9" bowl, super!
- 1900 154. Round Up low ruffled bowl - purple - incredible, dynamite!
155. Peacock & Grape 9" plate - blue - base color is almost a powder blue, rare plate & very nice
- 1050 156. Peacock & Grape 9" plate - marigold - pumpkin dark & beautiful, WOW
157. Enameled Chrysanthemum water pitcher - blue - super pretty
- 1200 158. Lattice & Poinsettia ftd ruffled bowl w/ribbed back - ice blue - super pretty, great color, a dandy
- 550 159. Lattice & Poinsettia ftd ruffled bowl - marigold - dark & pumpkin colored
- 1600 160. Rustic 18" funeral vase - green - very pretty irid. on a rare vase
- 500 161. Rustic 18 1/2" funeral vase - amethyst - open bubble on one hob towards base, NICE
- 700 162. Rustic 18" funeral vase - marigold - dark from top to bottom, NICE
163. Grape & Cable Variant ruffled bowl w/plain back - purple - very nice
- 1400 164. Dragon & Lotus 9" plate - blue - very rare plate & pretty
- 550 165. Stippled Three Fruits PCE bowl w/ribbed back - marigold - dark & pretty
- 925 166. N's Dandelion 7 pc. tankard water set - purple - fantastic pitcher, great set
- 500 167. Sunflower ftd ruffled bowl - emerald green - fantastic irid.
- 3000 168. Dragon & Lotus IC shaped bowl - red - super cherry red color w/red irid., a top of the line red piece





56



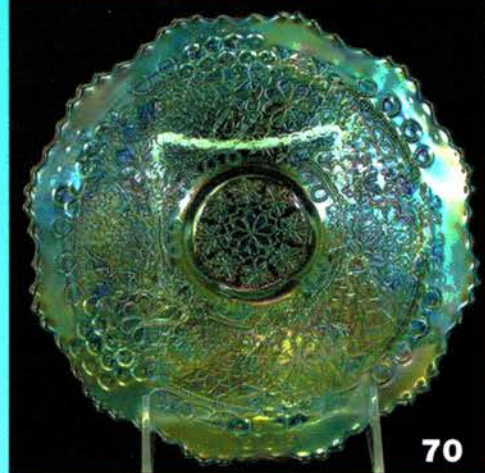
60



63



65



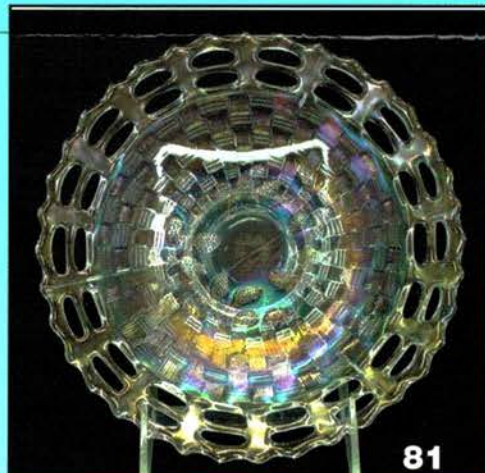
70



72



74



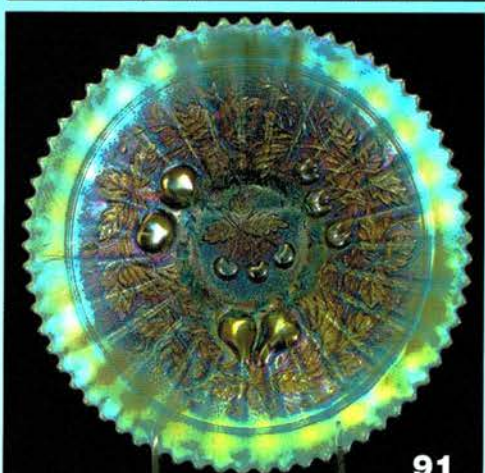
81



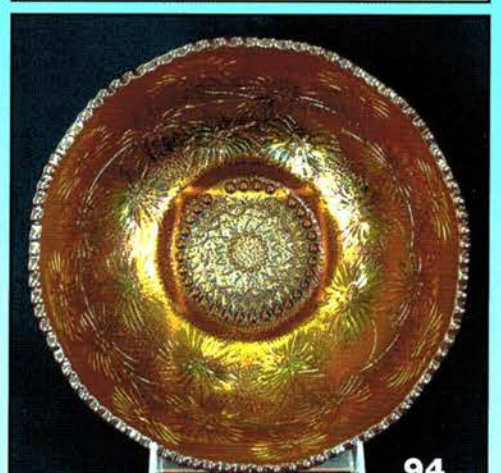
85



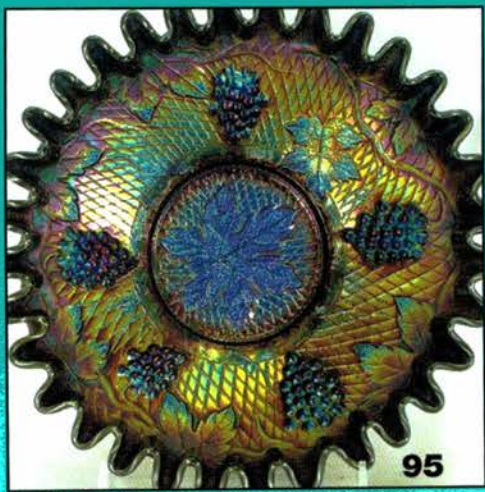
90



91



94



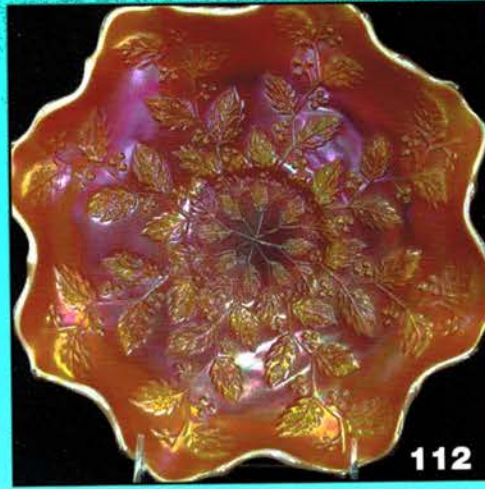
95



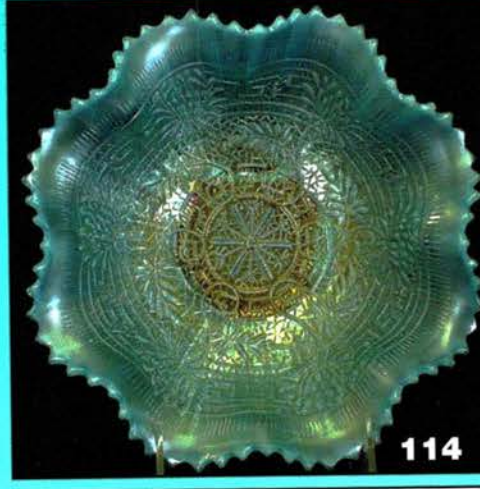
96



105



112



114



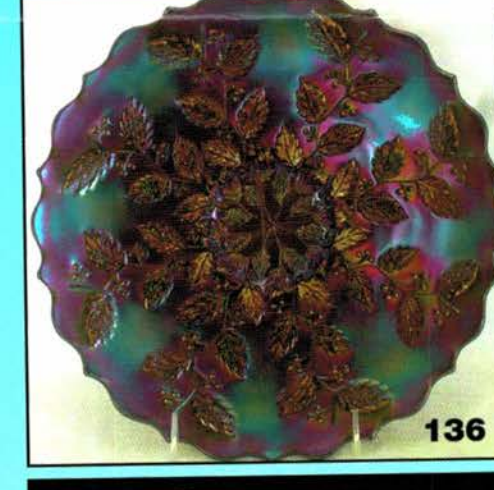
121



131



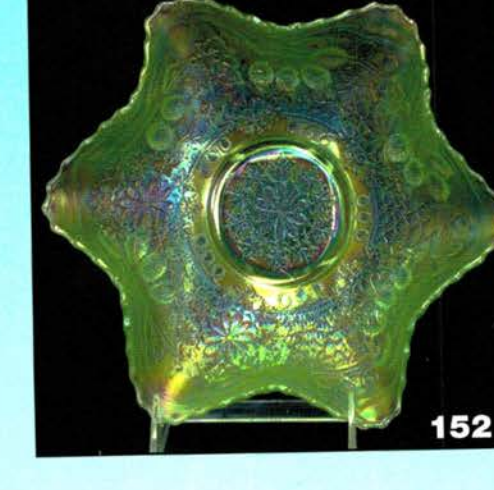
133



136



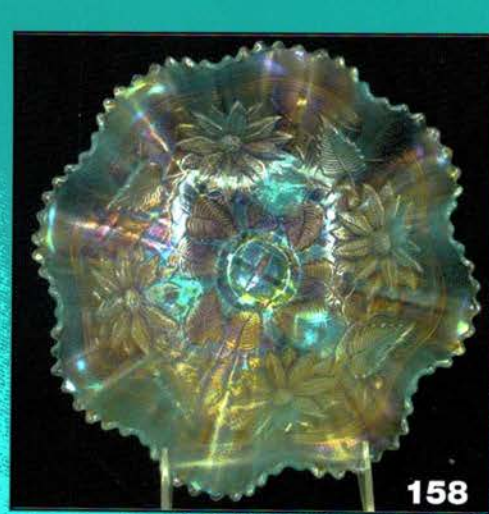
144



152



154



158



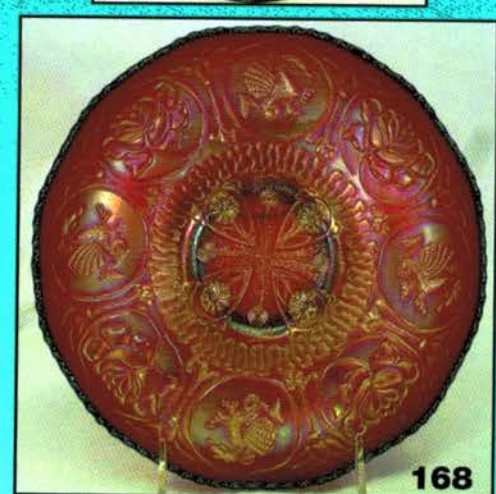
160



164



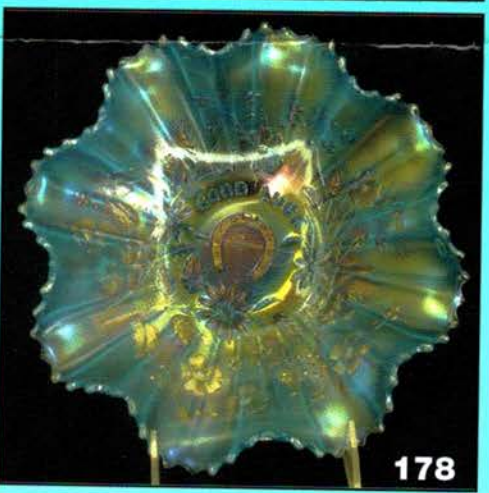
166



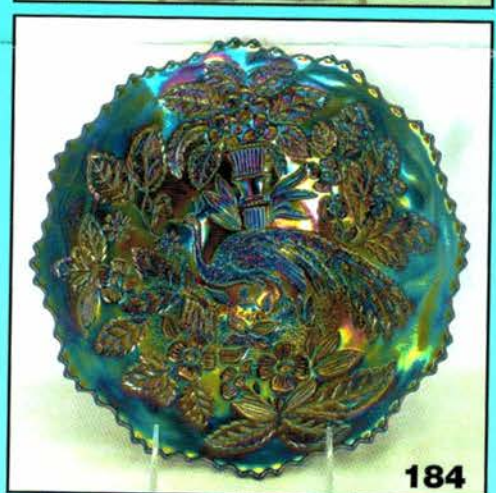
168



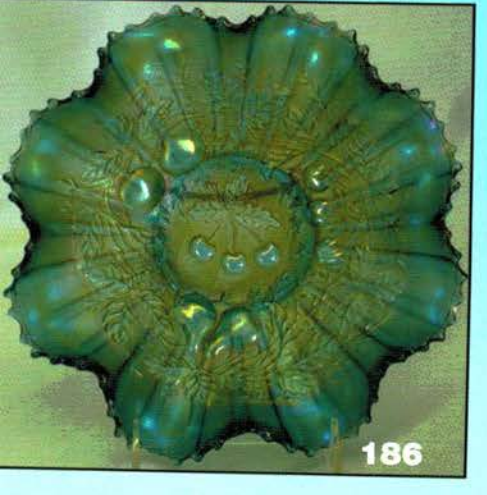
174



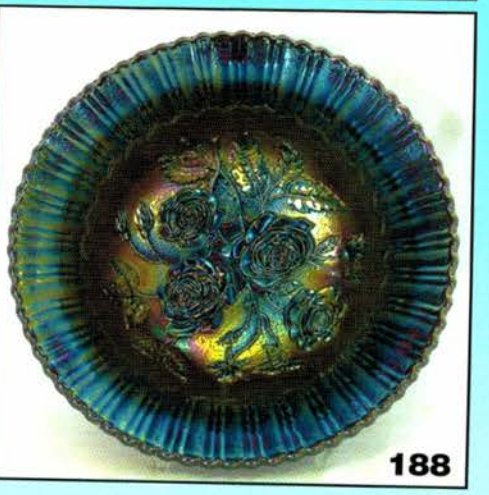
178



184



186

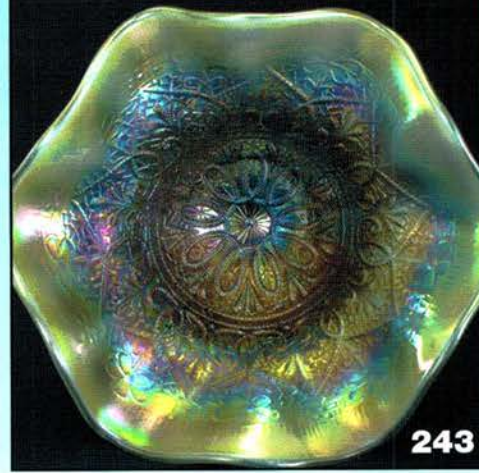
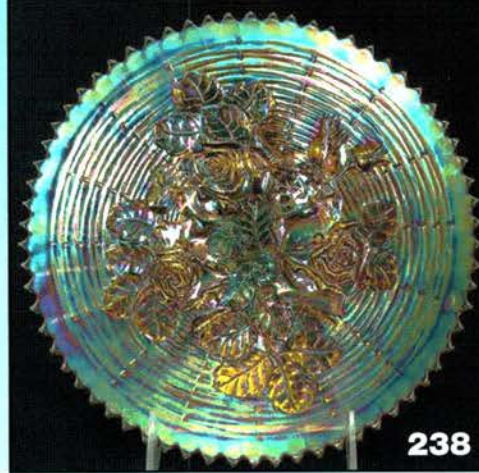
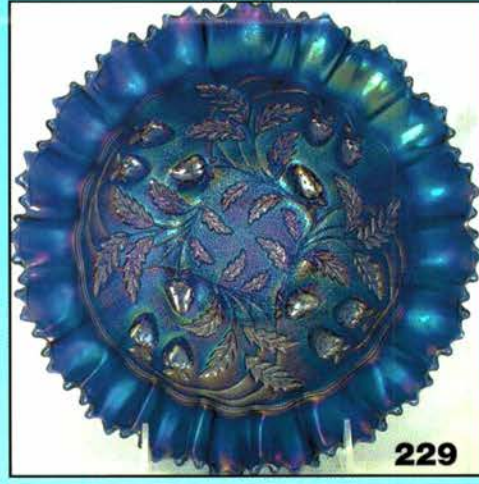
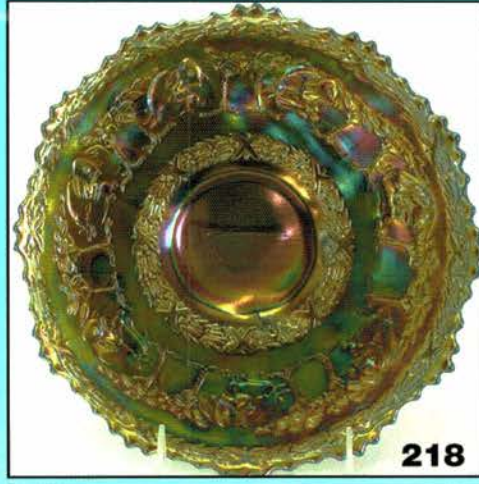
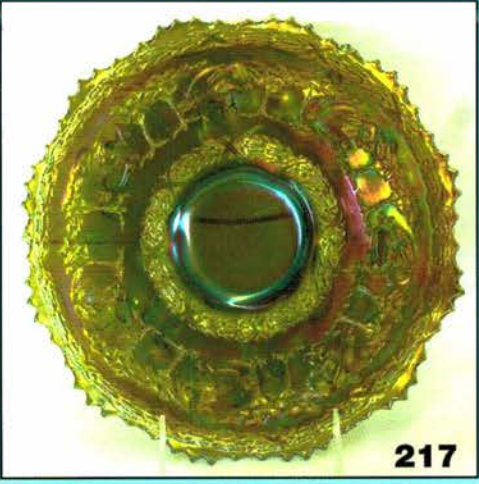
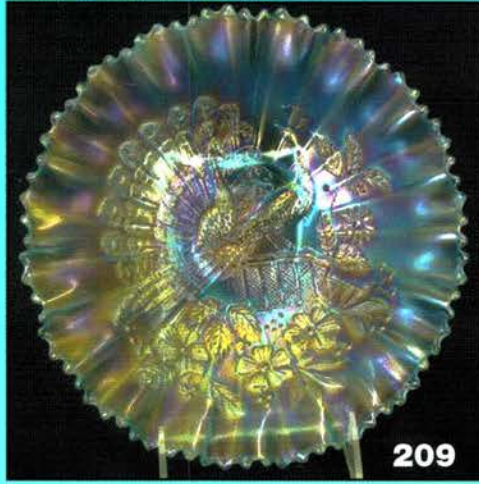
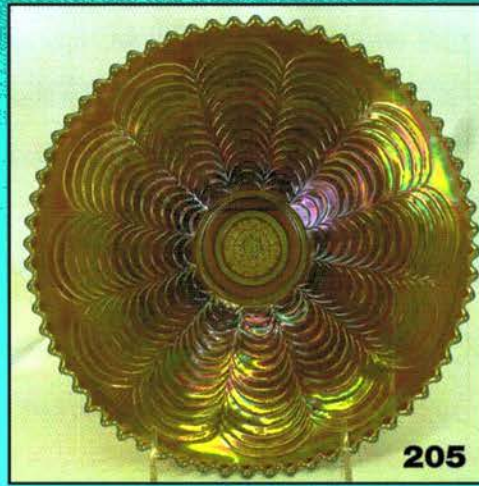
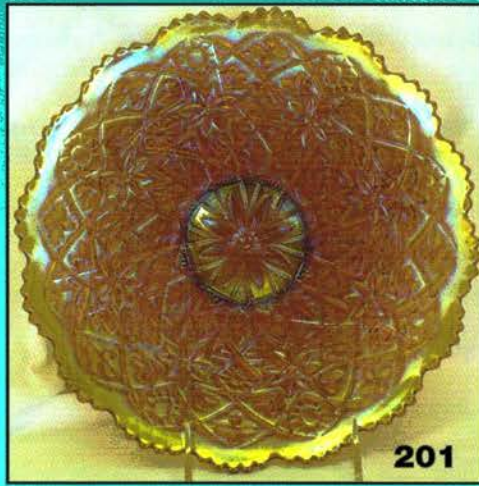


188



190





- 1/160 169. Rose Show ruffled bowl - aqua opal - this one is loaded with opal, scarce
- 900 170. Rose Show ruffled bowl - ice blue - super pretty irid. from top edge to center
- \_\_\_ 171. Rose Show ruffled bowl - purple - a great example w/very pretty irid.
- 650 172. Rose Show ruffled bowl - marigold - super dark pumpkin irid.
- 1500 173. Twins fruit bowl w/Hobstar & Arches base - smoke - only known of each, most people believe the set came from the factory this way
- 2300 174. Dragon & Strawberry IC shaped bowl - blue - fantastic electric irid., scarce
- \_\_\_ 175. Three Fruits 9" plate w/plain back - emerald green - lots of blue irid., beautiful
- \_\_\_ 176. Fluffy Peacock water pitcher - amethyst - super pretty, scarce
- \_\_\_ 177. Fluffy Peacock tumbler - amethyst
- 1600 178. GOOD LUCK RUFFLED BOWL W/RIBBED BACK - ICE BLUE - DARK ICE BLUE W/FANTASTIC IRID., RARE & MORE RARE
- 900 179. Good Luck ruffled bowl w/ribbed back - aqua opal - extremely rare color w/nice opal & pretty irid.
- 800 180. Good Luck ruffled bowl w/ribbed back - sapphire - very rare color, highly desirable
- 975 181. Good Luck ruffled bowl w/ribbed back - emerald green - super beautiful, rare bowl
- \_\_\_ 182. Good Luck ruffled bowl w/ribbed back - blue - electric
- \_\_\_ 183. Enameled Shasta Daisy water pitcher - ice green - scarce & nice
- 2100 184. Fenton's Peacock at Urn 9" plate - blue - electric & super, this shines
- \_\_\_ 185. Blackberry miniature compote - white - very rare color, couple of minor nicks on base
- 1300 186. Stippled Three Fruits ruffled bowl w/ribbed back - sapphire - fantastic irid. on this beautiful rare bowl
- \_\_\_ 187. Stippled Three Fruits ruffled bowl w/ribbed back - marigold - dark pumpkin irid.
- 1900 188. Lustre Rose round fruit bowl - purple - unbelievable, can't imagine one prettier
- \_\_\_ 189. Rustic 17" mid-size vases (2) - green - choice
- 3000 190. GREEK KEY 9" PLATE W/RIBBED BACK - BLUE - EXTREMELY RARE COLOR & SUPER
- \_\_\_ 191. Concord ruffled bowl - green - super pretty
- 1150 192. Lotus & Grape 9" plate - green - rare plate, highly desirable
- 625 193. Lotus & Grape 9" plate - blue - super pretty example of this rare plate
- 1700 194. LOTUS & GRAPE 9" PLATE - MARIGOLD - ONE OF A HANDFUL KNOWN, MUCH RARER THAN THE OTHER COLORS
- \_\_\_ 195. Scroll Embossed 9" plate - purple - covered w/blue irid.
- 2500 196. N'S TOWN PUMP - GREEN - EXTREMELY RARE, VERY FEW SOLD, NICE
- 500 197. Lustre Rose ftd centerpiece bowl - purple - fantastic, another amazing Imperial piece
- 725 198. Stippled Strawberry ruffled bowl w/ribbed back - lime green - very rare color w/pretty irid.
- \_\_\_ 199. Enameled Apple Blossom 4 pc. table set - blue - very rare set, seldom sold
- \_\_\_ 200. Enameled Apple Blossom berry dish - blue
- 3500 201. Hattie chop plate - amber - fantastic rare plate
- \_\_\_ 202. Faceted Butterfly hatpin - purple - scarce hatpin
- \_\_\_ 203. Four Leaf & Clover hatpin - purple - rare hatpin
- \_\_\_ 204. Stippled Rays 6" ruffled bowl - reverse amberina - scarce
- 2500 205. NIPPON 9" PLATE W/BW BACK - GREEN - FANTASTIC IRID. ON THIS, A "10"
- 500 206. Peacock Tail 9" plate - marigold - extremely rare, seldom sold
- \_\_\_ 207. Open Rose 8" ruffled bowl - powder blue - rare color w/very pretty irid., unusual piece
- 500 208. Peacocks PCE bowl w/ribbed back - ice green - very rare, pretty
- 800 209. Peacocks PCE bowl w/ribbed back - ice blue - dark color, pretty irid, rare!
- 1200 210. Peacocks PCE bowl w/ribbed back - emerald green - super pretty example, a dandy
- 825 211. Peacocks PCE bowl w/ribbed back - blue - super electric blue highlights
- \_\_\_ 212. Grape & Cable cvd compote - purple - scarce
- 625 213. Pony 10 ruffled bowl - ice green - super example w/stretchy irid.
- \_\_\_ 214. Smooth Rays ruffled compote - purple - fantastic
- 1600 215. Rood's Chocolates 6" advertising plate - amethyst - very rare plate, a top advertising piece
- \_\_\_ 216. Hearts & Flowers ruffled bowl w/ribbed back - ice blue - super, super example
- 2900 217. PETER RABBIT 9" PLATE - GREEN - FANTASTIC IRID. ON THIS EXTREMELY RARE PLATE, WOW
- 5200 218. PETER RABBIT 9" PLATE - BLUE - SUPER RARE & PRETTY, ANOTHER WOW
- \_\_\_ 219. Dugan Cherries ftd ruffled bowl - purple - electric & super
- 625 220. Wishbone ftd ruffled bowl - ice blue - dark, pretty
- \_\_\_ 221. Wishbone ftd ruffled bowl - white - scarce & desirable
- 700 222. Wishbone ftd ruffled bowl - emerald green - a dynamite piece of glass!
- \_\_\_ 223. Wishbone ftd ruffled bowl - blue - rare color, electric highlights
- 500 224. Stag & Holly ftd chop plate - marigold - dark, super, a great example
- 850 225. Morning Glory 17" funeral vase - purple - scarce & pretty
- \_\_\_ 226. Morning Glory 17" funeral vase - marigold - dark from top to bottom
- 1100 227. Imperial Grape 9" plate - purple - another beautiful Imperial plate
- \_\_\_ 228. Plume Panels & Bows water pitcher - marigold - dark & pretty
- 775 229. Stippled Strawberry PCE bowl w/ribbed back - blue - electric, super, this is a rare bowl
- \_\_\_ 230. Heavy Grape 10" ruffled berry bowl - purple - nice
- 500 231. Stippled Grape & Cable Variant PCE bowl w/ribbed back - ice blue - a very rare bowl, nice
- \_\_\_ 232. Enameled Ground Cherries 7 pc. water set - blue - pretty set
- 2000 233. Lotus & Grape ftd round 6" bowl - celeste blue - super pretty, extremely rare
- \_\_\_ 234. Poppy Show ruffled bowl - marigold - dark & fantastic, pumpkin
- \_\_\_ 235. Lined Lattice 10" vase - purple - nice
- 800 236. Grape Arbor tankard water pitcher - ice blue - super dark & beautiful
- \_\_\_ 237. Lotus & Grape ruffled bowl - green - fantastic irid.
- 800 238. Rose Show Variant 9" plate - marigold - super pastel irid., rare
- \_\_\_ 239. Fenton's Peacock at Urn 6 ruffled bowl - blue - super blue & red irid.
- \_\_\_ 240. Fenton's Peacock at Urn 6 ruffled bowl - marigold - add another pumpkin to the patch, WOW
- 800 241. Lustre Rose water pitcher - purple - fantastic w/pretty irid.
- \_\_\_ 242. Double Stemmed Rose dome ftd ruffled bowl - white - super pretty
- 1600 243. Hearts & Flowers ruffled compote - powder blue opal - extremely rare color plus super pretty
- \_\_\_ 244. Hearts & Flowers ruffled compote - blue - fabulous electric blue irid.
- 2100 245. Wishbone chop plate - green - extremely rare, less than a handful known, super pretty
- \_\_\_ 246. Apple Blossom Twigs low ruffled bowl - purple - has electric blue irid.
- 1250 247. Fenton's Good Luck/Heart and Horseshoe ruffled bowl - marigold - very rare & nice

- \_\_\_ 248. Three Fruits spt ftd ruffled bowl - purple - electric blue irid., pretty
- 3200 249. Stippled Grape & Cable Variant 9" plate w/ribbed back - sapphire - super pretty, very rare & desirable
- \_\_\_ 250. Stippled Grape & Cable Variant 9" plate w/ribbed back - marigold - covered w/a soft pink, yellow & green irid.
- \_\_\_ 251. Peacock Tail 10" 3 in 1 edge bowl - amethyst - scarce size, pretty
- \_\_\_ 252. N's Corn vase w/plain base - marigold - dark, nice
- \_\_\_ 253. Hatpins including: Border Path; Star Center; Top of the Morning (2); Elegance (2); Big Butterfly (3); Flying Bat; - Choice
- \_\_\_ 254. Strawberry 9" plate w/BW back - purple - super stretchy irid.
- 1400 255. Singing Birds water pitcher - emerald green - super pretty
- \_\_\_ 256. Vintage 7" plate - amethyst - scarce, nice
- 825 257. Wishbone 9" ftd plate - marigold - dark & super, rare color
- \_\_\_ 258. N's Stippled Rays 9" ruffled bowl - emerald green - fantastic
- 1000 259. Rose Pinwheel ruffled bowl - purple - extremely rare & pretty
- \_\_\_ 260. Cane & Daisy Cut 10" vase - marigold
- 625 261. Peacock lamp - red - outstanding red irid., extremely rare
- \_\_\_ 262. Ribbon Tie 3 in 1 edge low bowl - black amethyst - super pretty, some would call a plate
- 4100 263. PERSIAN MEDALLION 9", 2 SIDES UP WHIMSEY PLATE - MARIGOLD - ONLY ONE I HAVE SOLD, FANTASTIC IRID.
- \_\_\_ 264. Hatpins including: Jute Braid; Veiling; Basketweave; Dimples & Brilliance; Bars & Beads (2); Flower Arcs (2); Basket Flower - all dark - CHOICE
- \_\_\_ 264A. Rosary - aqua opal
- \_\_\_ 265. Fanciful low ruffled bowl - purple - electric blue irid. & fantastic
- 600 266. Diamond Points bushel basket - marigold - dark & super, rare
- \_\_\_ 267. Stippled Three Fruits spt ftd ruffled bowl - aqua opal - pastel, pretty
- \_\_\_ 268. Grape Delight ftd nut bowl - purple
- \_\_\_ 269. Aurora Pearls decorated bride's bowl in metal frame - lavender color w/lots of decoration
- \_\_\_ 270. Aurora Pearls decorated bride's bowl in metal frame - amberina coloring w/bowtie decoration
- \_\_\_ 271. Aurora Pearls decorated bride's bowl in metal frame - lavender coloration w/floral decoration
- \_\_\_ 272. Diamond Point 10" vase - purple - pretty
- 900 273. NUART Chrysanthemum chop plate - white - super pretty example, rare
- 1100 274. Orange Tree 9" plate - blue - electric & fantastic, another one that will jump off your wall
- \_\_\_ 275. Quilted Star pattern large basket - marigold
- 1200 276. Dugan Vintage dome ftd IC shaped bowl - celeste blue - super pretty & extremely rare
- \_\_\_ 277. Rose Garden 5" letter style vase - blue - pretty
- \_\_\_ 278. Shell 9" plate - smoke - super pretty irid.
- \_\_\_ 279. Hatpins including: Spiral Dance (2); Coolie Hat; Hearts & Cross; Two Flowers; Tufted Throw Pillow; Turban; Six Plums; Six Sided Faceted Dome - all dark - CHOICE
- 600 280. Hearts & Flowers PCE bowl w/ribbed back - marigold - super, super dark pumpkin color
- \_\_\_ 281. Stretch Glass Ring Optic 14 1/2" vase - ice green
- \_\_\_ 282. Stretch Glass Ring Optic 14" vase - ice blue
- 1100 283. 1914 Parkersburg Elks 7" plate - blue - very rare, highly desirable, nice
- 650 284. Ten Mums tankard water pitcher - marigold - dark from top to bottom, pretty
- \_\_\_ 285. Four Flowers Variant 9" plate - ice green - super
- \_\_\_ 286. Diamond Lace water pitcher - purple - electric irid.
- \_\_\_ 287. Hatpins including: Waves (2) - chocolate; Banded Berry Clusters - lavender; Dinner Ring - purple; Faceted Dart - purple; Beaded (2) - CHOICE
- \_\_\_ 288. Stippled Peacocks 9" plate w/ribbed back - marigold - beautiful pink irid.
- \_\_\_ 289. Grape & Cable perfume - marigold - super pretty, bottom of stopper is made of epoxy
- 1100 290. PERSIAN MEDALLION 9" PLATE - WHITE - OUTSTANDING, FROSTY W/LOTS OF PINK IRID., RARE
- \_\_\_ 291. Persian Medallion 9" plate - marigold - dark, rare & nice
- \_\_\_ 292. Freefold 12" vase - purple - pretty
- 700 293. Butterfly ornament - marigold - great miniature, very rare
- \_\_\_ 294. End of the day or lunch hour swan - marigold - cute miniature
- 750 295. Heart & Vine 9" plate - amethyst - maybe the best example of amethyst I have sold
- \_\_\_ 296. Miniature Morning Glory 8" vase - purple - covered with blue irid.
- \_\_\_ 297. Miniature Morning Glory 5" vases (2) - marigold - choice
- 800 298. Starflower water pitcher - blue - super pretty irid. on this rare Fenton pitcher
- \_\_\_ 299. Unusual blown glass 9 1/2" vase w/flower frog top - marigold
- \_\_\_ 300. Coral 9" plate - marigold - very scarce, nice
- \_\_\_ 301. Imperial Grape & Windmill tumblers - purple - choice, both fantastic
- 1100 302. Stippled Grape & Cable ruffled bowl w/ribbed back - ice green - extremely rare bowl & nice, not many opportunities
- \_\_\_ 303. Rooster hatpins w/painted backgrounds in red, lavender, green, light blue and dark blue AND Rooster hatpins including lavenders (2), amber, white and ice blue; Blue Rooster w/fancy pin holder and a White Rooster w/red painted back - CHOICE
- \_\_\_ 304. Scarab paperweight - purple - many believe this is Tiffany
- \_\_\_ 305. Tumbler, similar to Svea pattern - marigold
- 1700 306. LOGANBERRY VASE - PURPLE - SPECTACULAR, A TOP NOTCH VASE
- \_\_\_ 307. Covered Hen on Nest - blue
- 800 308. Outstanding leaded glass lamp made from Carnival Glass pieces, originally made by Bob Lacock
- \_\_\_ 309. Contemporary Basketweave Open Edge spittoon - green opal - this was a gift from Frank Fenton to John Britt, only one made like it
- \_\_\_ 310. Contemporary Christmas compote - celeste blue - few of this color were made
- \_\_\_ 311. Contemporary Christmas compote - red
- \_\_\_ 312. Contemporary Christmas compote - green opal
- \_\_\_ 313. Contemporary Christmas compote - vaseline opal
- \_\_\_ 314. Stretch Glass pcs (2) - celeste blue - both to go
- \_\_\_ 315. Shell paperweight - white
- \_\_\_ 316. Authentic Fenton handmade Dealer Sign - red carnival
- \_\_\_ 317. Dragon & Lotus ruffled bowl - blue - has radium irid., chip on back edge
- \_\_\_ 318. Crabclaw 11" ruffled bowl - marigold
- \_\_\_ 319. Fenton Panels 12" vase - marigold
- \_\_\_ 320. Wide Panel 12" vase - marigold
- \_\_\_ 321. Enameled water pitcher & tumbler - blue - non-iridized
- \_\_\_ 322. Enameled 6 pc. water set - frosted white w/floral decoration
- \_\_\_ 323. Imperial Lead Lustre 8" vase - orange
- \_\_\_ 324. DeVilbus perfumes (3) - marigold - choice



# Seeck Auctions

P.O. Box 377  
Mason City, Iowa 50402

PRESORTED  
FIRST CLASS MAIL  
U.S. POSTAGE  
PAID  
MAIL EXPEDITORS

Heart of America Carnival Glass  
Club Convention

# Auction

Saturday, April 24, 2010  
9:30 A.M.

**The Joyce Seale Collection**  
Embassy Suites Airport Hotel  
Kansas City, Missouri

