

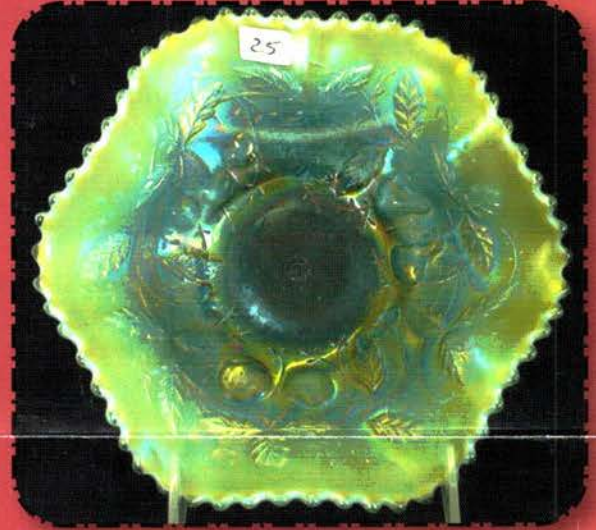
Southern California Carnival Glass Club's Convention Auction

Saturday, March 6, 2010 -- 9:30 A.M.

Ayres Hotel & Suites • 1945 E. Holt Blvd. • Ontario, California
Call (909)390-7778 for reservations



10



25



100



200



95

160

JIM & JAN SEECK

Seeck Auctions

641-424-1116

Southern California Carnival Glass Club's Convention

SATURDAY, MARCH 6, 2010 -- 9:30 A.M.
Ayres Hotel & Suites -- Ontario, California
NO BUYER'S PREMIUM
OPEN TO THE PUBLIC



Don't forget to check out our website for lots of pictures!
www.seeckauktion.com

Also, please email us and we will put you on our email mailing list for auction notices.

Call the Hotel direct for room reservations: 909-390-7778.

San Diego / Southern Calif. Convention info: Contact President Judy Maxwell at 909-794-4843.

Terms: Cash or Check, VISA and MasterCard accepted w/proper ID. **4% Clerking Fee** on all purchases except for payment of cash or check. Announcements made day of sale take precedence over any printed information.

**** Sales Tax will be charged, please bring your tax-exempt numbers.**

Jim and Jan Seeck
641-424-1116

Seeck Auctions

EMAIL:
jimjan@seeckauktion.com

ABSENTEE BID POLICY

1. Write-in bids will be accepted by sending the numbers of the item(s) desired and the amount bid on each to: **Seeck Auctions, PO Box 377, Mason City, Iowa 50402.**
2. You may call in your bids previous to the auction at (641)424-1116. (this is not live phone bidding)
3. You may email your bids to us: jimjan@seeckauktion.com Include the numbers of the item(s) you would like to bid on and amount bid on each, please include your telephone number.
4. Live phone bidding is available. Bidding must start on item at \$500. Please call for details.
5. There is a **\$7 handling charge** for each successful bid. Shipping and insurance charges are additional.
6. Bidders will be notified by phone/email if their bid(s) are successful. This will be done 1 - 3 days after the auction.
7. Please have all bids in by **Wed., March 3rd**. All bids (by mail, phone or **email**) after this date may not be carried out.
8. Please place bids in the following increments: \$1 to \$300 - \$5 increments \$300 up - \$25 increments.
9. **If you do not receive an item that sold for less than your bid, assume we cancelled your bid because the piece of glass had below average color, manufacture problem, damage or was not listed correctly.**
10. Auction results are posted on our website within 2 weeks of the auction.

- ___ 1. Captive Rose crimped edge ruffled compote - marigold
- ___ 2. Butterfly & Berry 8" vase - blue - pretty
- ___ 3. Rosette ftd ruffled bowl - green - super pretty
- ___ 4. Rosette ftd ruffled bowl - green - silvery
- ___ 5. Rosette ftd ruffled bowl - purple
- ___ 6. Pearly Dots deep ruffled bowl - amber
- ___ 7. Scroll Embossed small ruffled compote - purple - fantastic
- ___ 8. Scroll Embossed small ruffled compote - green
- ___ 9. Scroll Embossed small ruffled compote - marigold - pretty
- ___ 10. **Persian Garden chop plate - lavender - has super irid., this is a beautiful plate, extremely rare & desirable!**
- ___ 11. Holly & Berry hdld bonbon - green
- ___ 12. Wreath of Roses rose bowl - marigold
- ___ 13. **Fenton's Peacock at Urn 9" plate - blue - super pretty, a beauty**
- ___ 14. **Fenton's Peacock at Urn 9" plate - marigold - dark & pretty w/lots of pinks!**
- ___ 15. Fine Cut Flower ruffled compotes (2) - marigold - choice
- ___ 16. Thistle banana boat - amethyst - edge chip
- ___ 17. Thistle banana boat - marigold
- ___ 18. Pansy round pickle dish - purple - super
- ___ 19. Puzzle bonbon - marigold
- ___ 20. **Fentonia 7 pc. water set - blue - very scarce set & nice**
- ___ 21. **Fentonia 7 pc. water set - marigold - scarce, nice set**
- ___ 22. Holly 3 in 1 edge bowl - amethyst
- ___ 23. Holly 3 in 1 edge bowls (2) - blue - choice
- ___ 24. Holly 3 in 1 edge bowl - marigold
- ___ 25. **Fruits & Flowers 7" ruffled bowl - aqua opal - pastel & super, extremely rare & highly desirable**
- ___ 26. Fruits & Flowers 7" ruffled bowl - purple - nice
- ___ 27. Dragon & Lotus IC shaped bowl - blue
- ___ 28. Dragon & Lotus IC shaped bowl - amethyst
- ___ 29. Dragon & Lotus IC shaped bowl - marigold
- ___ 30. **Stippled Grape & Cable 9" plate w/BW back - green - very nice plate, rare stippled together w/BW back**
- ___ 31. Double Dutch ftd deep round bowl - green - chip on foot
- ___ 32. Thistle CRE edge bowl - green
- ___ 33. M'burg Holly card tray shaped bonbon - amethyst - radium
- ___ 34. M'burg Holly card tray shaped bonbon - marigold - satin
- ___ 35. **Grape & Cable master IC shaped bowl - green - scarce, nice**
- ___ 36. **Grape & Cable master IC shaped bowl - purple**
- ___ 37. Luster Rose fernery - blue - scarce color
- ___ 38. Luster Rose fernery - amber - scarce
- ___ 39. Pony 6 ruffled bowls (2) - marigold - choice
- ___ 40. Wide Panel 11" chop plate - red stretch - super pretty
- ___ 41. Wide Panel 8" plates (2) - red stretch - choice
- ___ 42. Fenton Cologne #55 w/Pagoda finial stopper - vaseline stretch - stopper is complete
- ___ 43. Dugan car vase w/metal base & holder - celeste blue stretch - rare car vase
- ___ 44. Round 10" bowl - vaseline stretch
- ___ 45. Vase, 11 1/2" - red stretch - nice
- ___ 46. **Embroidered Mums ruffled bowl w/plain back - ice blue - scarce, nice**
- ___ 47. **Embroidered Mums ruffled bowl w/ribbed back - blue - scarce**
- ___ 48. **Embroidered Mums ruffled bowl w/ribbed back - purple**
- ___ 49. Windflower IC shaped bowl - marigold - nice
- ___ 50. **Peacocks ruffled bowl w/ribbed back - aqua opal - pastel & beautiful, lots of opal!**
- ___ 51. **Peacocks ruffled bowl w/ribbed back - blue - scarce, nice**
- ___ 52. Imperial Grape ruffled bowl - purple
- ___ 53. Imperial Grape ruffled bowl - marigold
- ___ 54. **Western Thistle water pitcher - amber - Rihi-maki, pretty**
- ___ 55. Holly 9" plate - marigold - very pretty
- ___ 56. Holly 9" plate - white - nice
- ___ 57A. Holly 9" plate - clambroth
- ___ 57. Imperial Grape 6 pc. water set - green
- ___ 58. Imperial Grape 5 pc. water set - marigold
- ___ 59. Imperial Grape 7 pc. water set - clear, not carnival
- ___ 60. **Zipper Stitch 8 pc. wine set - marigold - decanter, 6 wines & under plate, nice set**
- ___ 61. Dogwood Spray dome ftd ruffled bowl - peach opal
- ___ 62. Dogwood Spray dome ftd ruffled bowl - purple - minor nick on base
- ___ 63. Singing Birds mugs (2) - blue - choice
- ___ 64. Wild Blackberry ruffled bowl - green - silvery
- ___ 65. **Orange Tree ruffled bowl - red - rare bowl, highly desired**
- ___ 66. File & Fan ruffled compote - blue opal - nice
- ___ 67. File & Fan ruffled compote - peach opal
- ___ 68. Sunflower spt ftd ruffled bowl - marigold - dark, super!
- ___ 69. Sunflower spt ftd ruffled bowl - green
- ___ 70. **Twigs 3 3/4" crimped edge vase - purple - scarce, highly desirable, nice**

- ___ 71. M'burg Holly Sprig 7" tri-cornered bowl - green - radium, super
- ___ 72. M'burg Holly Sprig 7" tri-cornered bowl - marigold - radium, nice
- ___ 73. Grape Arbor 5 pc. tankard water set - marigold - scarce
- ___ 74. Waterlily ftd master IC shaped berry bowl - marigold
- ___ 75. **Rose Show 9" plate - blue - very scarce plate**
- ___ 76. **Rose Show 9" plate - marigold - scarce & nice**
- ___ 77. Acanthus deep ruffled bowl - marigold - heat check in base
- ___ 78. Open Rose ftd centerpiece bowl - smoke - super yellow & blue irid., nice!
- ___ 79. N's Stippled Rays 10" PCE bowl - purple
- ___ 80. Petal & Fan 10" ruffled bowl - purple - super pretty
- ___ 81. Peach & Pear banana boat - marigold
- ___ 82. Grape & Cable 11" ruffled bowl w/BW back - purple
- ___ 83. Grape & Cable 11" ruffled bowl w/BW back - marigold
- ___ 84. Propeller giant compote - marigold
- ___ 85. **Stippled Three Fruits 9" plate w/ribbed back - blue - scarce**
- ___ 86. Stippled Three Fruits 9" plate w/ribbed back - purple - pretty, chip on edge
- ___ 87. Stippled Three Fruits 9" plate w/ribbed back - marigold - nice
- ___ 88. Diamantes Star 8" vase - marigold - Jain
- ___ 89. Vintage bonbon - blue
- ___ 90. **Four Seventy Four milk pitcher - purple - extremely rare, highly desirable & pretty**
- ___ 91. Four Seventy Four milk pitcher - green
- ___ 92. Four Seventy Four milk pitcher - marigold
- ___ 93. Autumn Acorn CRE bowl - marigold - very nice
- ___ 94. Wild Rose Open Edge ftd bowl - green
- ___ 95. Rustic 19" funeral vase - blue - scarce & nice
- ___ 96. Imperial Grape ruffled compote - marigold
- ___ 97. Holly ruffled bowl - blue
- ___ 98. Holly ruffled bowl - marigold
- ___ 99. Wide Panel 15" under plate & 11" bowl - marigold - sold as set
- ___ 100. **Hearts & Flowers ruffled bowl w/ribbed back - aqua opal - very rare, highly desirable, pretty w/good even irid.**
- ___ 101. **Hearts & Flowers ruffled bowl w/ribbed back - ice blue - very pretty**
- ___ 102. N's Wide Panel 10 1/2" mid-size vase - green - has 4 1/4" base, heat check in base
- ___ 103. Strawberry 9" plate w/BW back - green - silvery
- ___ 104. Strawberry 9" plate w/BW back - purple
- ___ 105. Luster Rose butter dish - purple - super pretty
- ___ 106. Oval Star & Fan rose bowl - marigold
- ___ 107. **Lucille 7 pc. water set - blue - rare set**
- ___ 108. **Double Stemmed Rose dome ftd round bowl - purple - has electric highlights, could almost call a plate**
- ___ 109. Double Stemmed Rose dome ftd IC shaped bowl - marigold
- ___ 110. **Wreath of Roses punch bowl & base w/Vintage interior - marigold - dark & nice**
- ___ 111. N's Stippled Rays 9" ruffled bowl - purple
- ___ 112. N's Stippled Rays 9" ruffled bowl - marigold
- ___ 113. Peacock & Grape 3 in 1 edge bowl - marigold - dark & super, burst in base
- ___ 114. Vintage round sauce - blue
- ___ 115. **Double Stemmed Rose dome ftd ruffled bowl - blue opal - opal on half of bowl, rare & nice**
- ___ 116. Pearly Dots 3 in 1 edge bowl - green
- ___ 117. Coin Dot 3 in 1 edge bowl - marigold
- ___ 118. Flashing Star water pitcher - amber - Riihimaki, chip on base
- ___ 119. Flashing Star tumblers (2) - amber - Riihimaki, choice
- ___ 119A. Lightning Stars tumbler - amber - Riihimaki
- ___ 120. **Wide Panel epergne - green - very scarce, highly desirable & nice**
- ___ 121. Concave Flute 8" squatty vase - marigold
- ___ 122. Coin Spot ruffled compote - peach opal
- ___ 123. Morning Glory 15" funeral vase - marigold - nice
- ___ 124. Windflower ruffled bowl - blue
- ___ 125. **Good Luck ruffled bowl w/ribbed back - emerald green - pretty, very rare**
- ___ 126. **Good Luck ruffled bowl w/BW back - purple**
- ___ 127. Rising Sun water pitcher - marigold
- ___ 128. Rising Sun tumbler - marigold
- ___ 129. Luster Rose 8" ftd ruffled bowl - marigold
- ___ 130. **Leaf & Beads rose bowl - white - scarce color, nice**
- ___ 131. Leaf & Beads rose bowl - marigold - dark & nice
- ___ 132. Leaf & Beads rose bowl w/Sunflower interior - purple
- ___ 133. Leaf & Beads rose bowl w/Rayed interior - green
- ___ 134. Question Mark bonbon - marigold
- ___ 135. **Stippled Strawberry ruffled bowl w/BW back - horehound - very neat bowl, pretty**
- ___ 136. Stippled Strawberry ruffled bowl w/ribbed back - reninger blue - chip on edge
- ___ 137. Star & File 5 pc. wine set - marigold - has clear glass tray
- ___ 138. Jeweled Heart 8" plate - purple - super
- ___ 139. Vintage CRE bowl - amethyst
- ___ 140. **Peacock & Grape 3 in 1 edge bowl - lime green**

opal - scarce bowl

- ___ 141. Cut Flowers vase – marigold
- ___ 142. Cherry Circles card tray shaped bonbon - aqua - scarce color & nice
- ___ 143. Cherry Circles card tray shaped bonbon - blue
- ___ 144. Folding Fan crimped edge ruffled compote - peach opal
- ___ **145. N's Grape & Cable lg size orange bowl - purple - super pretty, a beauty**
- ___ 146. Grape & Cable fruit bowl - purple - scarce
- ___ 147. Tree Trunk 7" squatty vase - purple
- ___ 148. Mary Ann hdd vase - amethyst
- ___ 149. Imperial Optic Flute Vt. 7" bowl - purple
- ___ **150. NUART Chrysanthemum chop plate - amber - super pretty plate & rare**
- ___ 151. Dugan Cherries ftd ruffled bowl - peach opal
- ___ 152. Rustic 10" vase - green
- ___ 153. Rustic 10" vase - blue
- ___ 154. Circle Scroll ruffled hatshape - marigold - pretty
- ___ **155. Stippled Three Fruits ruffled bowl w/ribbed back - white - scarce**
- ___ 156. Stippled Three Fruits ruffled bowl w/ribbed back - marigold
- ___ 157. Stippled Rays IC shaped 6" bowl - red - scarce
- ___ 158. Grape & Cable cologne bottle - marigold - nice
- ___ 159. Wreathed Cherry master banana boat - purple
- ___ **160. Ripple 14" funeral vase - purple - super pretty, very scarce, 4 1/2" base**
- ___ 161. Ripple 13 1/2" funeral vase - marigold - super pretty, wide mouth, 4 1/2" base
- ___ 162. Caroline crimped edge square bowl - peach opal
- ___ 163. Six Petal ruffled bowl - purple - super pretty
- ___ 164. Thin Panel 6 1/2" JIP vase - peach opal - nice
- ___ **165. Zippered Loop Kerosene lamp - marigold - 9" high, 5 1/2" base**
- ___ 166. N's Bushel Basket - purple - pretty
- ___ 167. N's Bushel Basket - marigold - dark
- ___ 168. Vineyard 7 pc. water set - marigold
- ___ 169. Apple Blossom 7" ruffled bowl - purple
- ___ **170. Peacocks PCE bowl w/ribbed back - blue - scarce**
- ___ 171. Peacock & Grape ruffled bowl - amethyst
- ___ 172. Peacock & Grape ruffled bowl - green
- ___ 173. Peacock & Grape ruffled bowl - blue
- ___ 174. Peacock & Grape ruffled bowl - marigold
- ___ **175. Persian Medallion 9" plate - blue - absolutely super, beautiful!**
- ___ 176. Orange Tree standard size mug - lime green w/marigold overlay
- ___ **177. Windflower 9" plate - blue - super pretty**
- ___ 178. Mikado giant round compote - marigold - nice
- ___ 179. Blackberry Open Edge 2 sides up basket - marigold
- ___ **180. Nippon ruffled bowl w/BW back - marigold - dark & super pumpkin**
- ___ 181. Ribbon Tie 3 in 1 edge bowl - blue
- ___ 182. Three Fruits 9" plate w/BW back - purple
- ___ 183. Three Fruits 9" plate w/BW back - marigold
- ___ 184. Persian Medallion hair receiver - marigold
- ___ **185. M'burg Peacock at Urn 9" IC shaped Mystery bowl - amethyst - radium & scarce**
- ___ **186. M'burg Peacock at Urn 9" IC shaped Mystery bowl - marigold - satin**
- ___ 187. Graceful ftd vase – marigold
- ___ 188. Fruits & Flowers bonbon - blue - electric & super
- ___ 189. Heavy Grape 6" ruffled bowl - purple - pretty
- ___ 190. Daisy & Plume ftd rose bowl - green - pretty, has Blackberry interior
- ___ 191. Daisy & Plume ftd rose bowl - purple - Blackberry interior, rough edges on feet
- ___ 192. Daisy & Plume ftd rose bowl - marigold - Blackberry interior
- ___ 193. Holly & Berry tri-cornered hdd nappy - purple – pretty
- ___ 194. Stippled Rays 6" plate - marigold
- ___ **195. N's Peacock at Urn master IC bowl - purple - scarce**
- ___ 196. N's Peacock at Urn IC sauce - purple
- ___ 197. Grape & Cable variant PCE bowl w/BW back - green - pretty
- ___ 198. Grape & Cable variant PCE bowl w/BW back - marigold
- ___ 199. Carnival Hobstar cvd cracker jar - marigold
- ___ **200. N's Thin Rib 14" mid-size vase - vaseline - very rare & very pretty**
- ___ 201. N's Thin Rib 13" mid-size vase - purple - nice
- ___ 202A. N's Thin Rib 12" mid-size vase - green
- ___ 202. Rustic 14" mid-size vase - green
- ___ 203. Rustic 16" mid-size vase - amethyst
- ___ 204. Pineapple creamer & compote - marigold - choice
- ___ 205. Stag & Holly lg size ftd ruffled bowl - blue - manufacture separation on base
- ___ 206. Stag & Holly lg size ftd ruffled bowl - marigold - super, chip on edge
- ___ 207. Heavy Grape master berry bowl - purple - super
- ___ 208. Waterlily master ftd ruffled bowl - marigold
- ___ 209. Butterflies card tray shaped bonbon - green
- ___ **210. Peacocks 9" plate w/ribbed back - blue - super pretty, a dandy!**
- ___ **211. Peacocks 9" plate w/ribbed back - lavender - super plate, another dandy!**
- ___ **212. Peacocks 9" plate w/ribbed back - purple - scarce**
- ___ **213. Peacocks 9" plate w/ribbed back - ice green - scarce**
- ___ 214. Ribbon Tie CRE bowl – marigold

- ___ 215. Windmill water pitcher - purple - scarce & very nice
- ___ 216. Windmill tumbler - purple
- ___ 217. Butterfly bonbon - purple
- ___ 218. Nippon PCE bowl w/BW back - white
- ___ 219. Strawberry bonbon - marigold
- ___ 220. Stippled Grape & Cable Variant ruffled bowl w/ribbed back - purple - very pretty example & scarce
- ___ 221. Open Rose 8" ruffled bowl - purple - pretty
- ___ 222. Curved Star punch bowl & base - marigold - hard to find a set
- ___ 223. Field Thistle water pitcher - marigold
- ___ 224. Field Thistle tumbler - marigold
- ___ 225. Hearts & Flowers ruffled compote - aqua opal - pastel & super, restoration on base
- ___ 226. Hearts & Flowers ruffled compote - purple - super nice
- ___ 227. Zippered Heart master ruffled berry bowl - purple - nice
- ___ 228. Fenton's Grape & Cable fruit bowl w/Persian Medallion interior - blue
- ___ 229. Pansy ruffled bowl - purple - gold irid.
- ___ 230. Apple Blossom Twigs ruffled bowl w/smooth edge - purple - super pretty
- ___ 231. Holly & Berry ruffled bowl - peach opal
- ___ 232. M'burg Hanging Cherries master IC bowl - green - satin
- ___ 233. Stippled Three Fruits spt ftd ruffled bowl - marigold - pumpkin irid., pretty!
- ___ 234. Open Rose 9" plate - aqua
- ___ 235. Paneled Dandelion 7 pc. water set - marigold - scarce set
- ___ 236. Grape Delight ftd rose bowl - blue
- ___ 237. Fanciful ruffled bowl - purple
- ___ 238. Fanciful ruffled bowl - marigold
- ___ 239. Fine Cut & Roses rose bowl - purple
- ___ 240. Fine Cut & Roses candy dish - aqua opal - lg chip on one foot
- ___ 241. Western Thistle cider pitcher - marigold - Rihi-maki
- ___ 242. Near Cut souvenir creamers including: "Clearwater, Minn", Vesta, Minn", Stone City, S.D." and Sanborn, Minn" - marigold - choice
- ___ 243. Beaded Shell mug - blue
- ___ 244. Beaded Shell mugs (2) - purple - choice
- ___ 245. Stippled Peacocks ruffled bowl w/ribbed back - marigold - scarce, burst on edge
- ___ 246. Basketweave Open Edge JIP hat - blue - silvery
- ___ 247. Little Flowers 10" IC shaped bowl - blue
- ___ 248. File spooner - marigold
- ___ 249. Fenton's Stippled Rays dome ftd 3 in 1 edge 10" bowl - green
- ___ 250. M'burg Hanging Cherries water pitcher - green - scarce & very nice
- ___ 251. M'burg Hanging Cherries tumbler - green
- ___ 252. M'burg Hanging Cherries water pitcher - marigold - pretty & scarce
- ___ 253. Acorn 7" ruffled bowl - green - scarce color
- ___ 254. Tulip 14" vase - marigold - age?
- ___ 255. Captive Rose 9" plate - marigold - scarce, nice
- ___ 256. Vintage 9" ruffled bowl - amethyst - silvery
- ___ 257. Grape & Cable 6 pc. water set - purple - nice
- ___ 258. Thistle 3 in 1 edge bowl - amethyst
- ___ 259. Thistle 3 in 1 edge bowl - marigold
- ___ 260. Peacock at the Fountain master berry bowl - amethyst - scarce, nice
- ___ 261. Grape & Cable spt ftd 9" plate - purple
- ___ 262. Three Fruits PCE bowl w/BW back - purple
- ___ 263. Hattie ruffled bowl - purple - super pretty
- ___ 264. M'burg Blackberry Wreath 9" IC shaped bowl - green - satin, pretty
- ___ 265. Grape & Cable punch cup - aqua opal - very rare, cracked
- ___ 266. Cathedral chalice - marigold
- ___ 267. Blackberry Open Edge ruffled basket - aqua
- ___ 268. Stippled Grape & Cable 10" ruffled bowl - marigold - scarce
- ___ 269. Vintage CRE edge bowl - blue
- ___ 270. Grape & Cable turned in centerpiece bowl - irid. custard - scarce, nice
- ___ 271. Grape & Cable Variant ruffled bowl w/BW back - purple
- ___ 272. Fishscale & Beads 6" plate - white - pretty
- ___ 273. N's Stippled Rays 9" ruffled bowl - amethyst
- ___ 274. Blue tumblers including: Peach (2), Butterfly & Berry (2) - choice
- ___ 275. M'burg Potpourri milk pitcher - marigold - extremely rare pitcher, not many known
- ___ 276. Basketweave Open Edge ruffled basket - marigold
- ___ 277. Chrysanthemum 10" ftd IC shaped bowl - marigold - nice
- ___ 278. Enameled Cherry & Little Flowers water pitcher - blue
- ___ 279. Peacock & Grape IC shaped bowl - blue
- ___ 280. Old Rose Distillery Grape & Cable Variant 9" plate w/ribbed back - green - very pretty for these, scarce
- ___ 281. Grape & Cable PCE bowl w/BW back - marigold
- ___ 282. Stag & Holly lg size IC shaped ftd bowl - blue
- ___ 283. Horse Medallion ftd ruffled bowl - blue - nice
- ___ 284. Amethyst tumblers including: Beaded Shell (3), Enameled Iris (5) - choice
- ___ 285. Rustic 19" funeral vase - blue - nick on back edge

of point

- ___ 286. Tribal 6" vase - marigold - JAIN
- ___ 287. Orange Tree loving cup - blue - nice
- ___ 288. Heavy Iris tankard water pitcher - marigold
- ___ 289. Holly ruffled compote - marigold
- ___ **290. Rose Show ruffled bowl - purple - very scarce, nice**
- ___ 291. Wide Rib 4 1/2" squatty vase - peach opal - nice
- ___ 292. M'burg Little Stars 7" ruffled bowl - marigold - satin
- ___ 293. Cherry Chain 6" plate - marigold - pretty
- ___ 294. Star Medallion milk pitcher - marigold
- ___ **295. Good Luck PCE bowl w/ribbed back - blue - pretty**
- ___ 296. M'burg Holly Sprig 7" round bowl - green - radium, pretty
- ___ 297. Persian Garden 11" IC bowl - white - nice
- ___ 298. Target 9 1/2" vase - purple
- ___ 299. Basketweave Open Edge square shaped basket - marigold
- ___ **300. Stippled Good Luck 9" plate w/ribbed back - purple - very pretty example, rare stippled**
- ___ 301. Wishbone ftd ruffled bowls (2) - purple - choice
- ___ 302. Greek Key PCE bowl w/BW back - marigold - scarce
- ___ 303. Luster Rose water pitcher - marigold - base will glow under black light
- ___ 304. Luster Rose tumbler - marigold
- ___ **305. Springtime water pitcher - marigold - dark & fantastic, this is a beauty**
- ___ 306. Flute sauces (2) - purple - choice
- ___ 307. Open Rose deep round bowl - blue - scarce color
- ___ 308. Corinth 7 1/2" vase - purple
- ___ 309. Honeycomb rose bowl - peach opal
- ___ 310. Grape & Cable cracker jar - marigold
- ___ 311. Persian Medallion bonbon - red - chip on bowl by handle
- ___ 312. Panther ftd ruffled master berry bowl - marigold - pretty
- ___ **313. Palm Beach square bowl - marigold**
- ___ 314. Blue tumblers including: Stork & Rushes (2), Paneled Holly (contemporary) - choice
- ___ **315. M'burg Many Stars ruffled bowl w/5 pt. star - green - radium & pretty, scarce bowl**
- ___ 316. Diamond & Columns 11" vase - green
- ___ 317. Grape & Cable banana boat - purple - nice
- ___ 318. Three Fruits 9" plate w/plain back - purple - super pretty
- ___ 319. Fantail ftd round bowl - blue
- ___ 320. Blueberry water pitcher - marigold - super pretty, has heat checks in base
- ___ 321. Wild Strawberry 10" ruffled bowl w/BW back - green - silvery
- ___ 322. Open Rose 9" plate - amber
- ___ 323. Leaf Chain 9" ruffled bowl - white
- ___ 324. Amethyst tumblers including: M'burg Feather & Heart, Maple Leaf and Dugan Peacock at the Fountains (2) - choice
- ___ **325. Loganberry vase - marigold - very pretty irid.**
- ___ 326. Flowers & Frames dome ftd ruffled bowl - purple
- ___ 327. Shell & Sand ruffled bowl - purple - pretty
- ___ 328. Peacock & Dahlia 7" ruffled bowl - marigold
- ___ 329. Ftd Orange Tree master berry bowl - marigold - super
- ___ 330. Lattice & Grape tankard water pitcher - marigold
- ___ 331. Orange Tree ruffled compote - marigold
- ___ 332. Imperial Grape 11" ruffled bowl - purple - pretty
- ___ 333. Grape & Cable Variant 9" plate w/BW back - purple
- ___ 334. Freefold 12" vase - smoke
- ___ 335. Raspberry tumbler - green
- ___ 336. Three Fruits ruffled bowl w/plain back - purple
- ___ **337. Orange Tree 9" plate - blue - fantastic, a beauty!**
- ___ 338. Curved Star & Heavy Diamonds creamers - marigold - choice
- ___ 339. Contemporary pcs. of Carnival Glass - choice
- ___ 340. Misc. pcs. of Carnival Glass - choice
- ___ 341. Misc. pcs. of Carnival Glass - choice

Seeck Auctions

P.O. Box 377
Mason City, Iowa 50402

PRESORTED
FIRST CLASS MAIL
U.S. POSTAGE
PAID
MAIL EXPEDITORS



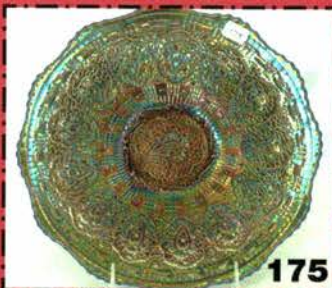
70

Southern California Carnival
Glass Club's Convention
Saturday, March 6th, 2010
9:30 AM
Ayres Hotel & Suites

T4 P1 238
Lee Markley
PO Box 306
Mentone IN 46539-0306



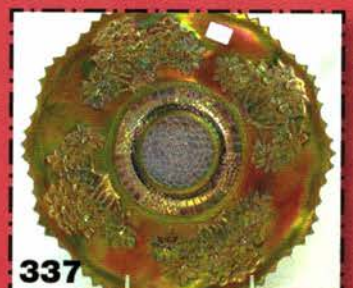
210



175



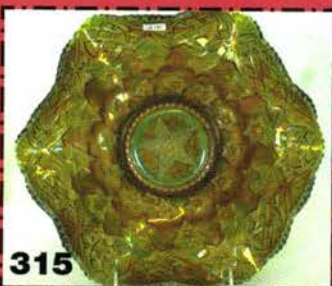
150



337



300



315



145



90

215



250



120



252

305

275



50