

Texas Carnival Glass Club Convention Auction

Saturday, February 27th, 2010 -- 9:30 A.M.

Sheraton Houston Brookhollow Hotel

3000 North Loop West Freeway • Houston, Texas

Call (713)613-0633 for reservations

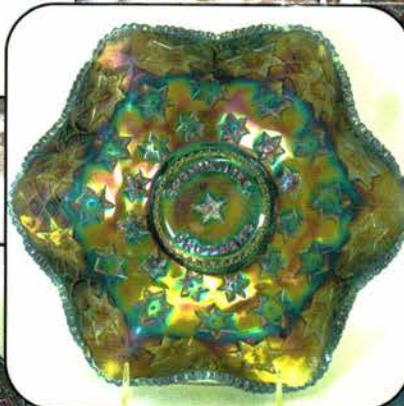


17

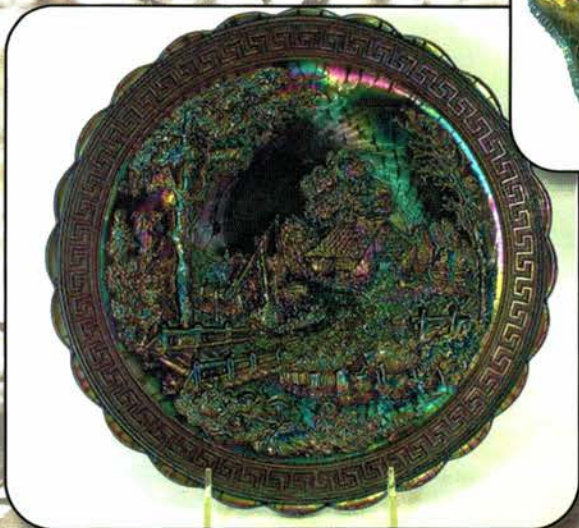
18



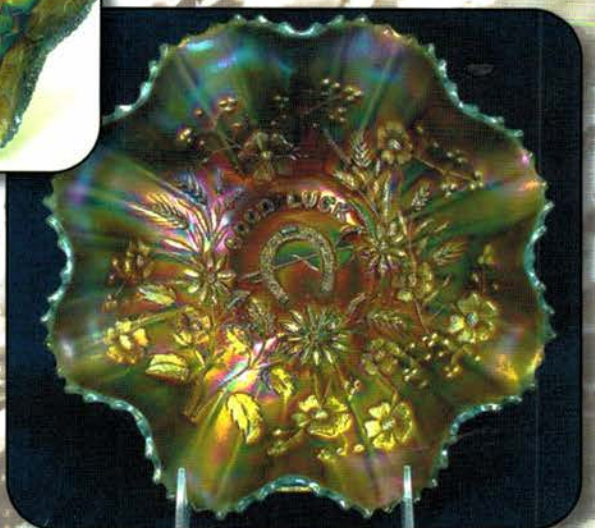
152



244



188



203

JIM & JAN SEECK

Seeck Auctions

641-424-1116

Texas Carnival Glass Club Convention

SATURDAY, FEBRUARY 27th, 2010 -- 9:30 A.M.

Sheraton Houston Brookhollow Hotel --

Houston, Texas

NO BUYER'S PREMIUM

OPEN TO THE PUBLIC



Don't forget to check out our website for lots of pictures!
www.seeckauction.com

Also, please email us and we will put you on our email mailing list for auction notices.

Call the Hotel direct for room reservations: 713-613-0633. Let them know you are with the Texas Carnival Glass Club. Group rate ends February 9th.

Texas Club Convention info: Contact Club President Emmett Morgan at: 979-836-7896

Terms: Cash or Check, VISA and MasterCard accepted w/proper ID. **4% Clerking Fee** on all purchases except for payment of cash or check. Announcements made day of sale take precedence over any printed information.

**** Sales Tax will be charged, please bring your tax-exempt numbers.**

Visit the Texas Carnival Glass Club Website: www.texascarnivalglass.org

Jim and Jan Seeck
641-424-1116

Seeck Auctions

EMAIL:
jimjan@seeckauction.com

ABSENTEE BID POLICY

1. Write-in bids will be accepted by sending the numbers of the item(s) desired and the amount bid on each to:
Seeck Auctions, PO Box 377, Mason City, Iowa 50402.
2. You may call in your bids previous to the auction at (641)424-1116. (this is not live phone bidding)
3. You may email your bids to us: jimjan@seeckauction.com Include the numbers of the item(s) you would like to bid on and amount bid on each, please include your telephone number.
4. Live phone bidding is available. Bidding must start on item at \$500. Please call for details.
5. There is a **\$7 handling charge** for each successful bid. Shipping and insurance charges are additional.
6. Bidders will be notified by phone/email if their bid(s) are successful. This will be done 1 - 3 days after the auction.
7. Please have all bids in by **Weds., Feb. 24th**. All bids (by mail, phone or **email**) after this date may not be carried out.
8. Please place bids in the following increments: \$1 to \$300 - \$5 increments \$300 up - \$25 increments.
9. **If you do not receive an item that sold for less than your bid, assume we cancelled your bid because the piece of glass had below average color, manufacture problem, damage or was not listed correctly.**
10. Auction results are posted on our website within 2 weeks of the auction.

- ___ 1. Heavy Grape ruffled master berry bowl - smoke - pretty
- ___ 2. Heavy Grape round master berry bowl - blue - very scarce color
- ___ 3. Florentine 10 1/2" pair of candlesticks - ice green - one has been polished on base
- ___ 4. Florentine 8 1/2" single candlestick - ice green - we are giving you the other as it is in 2 pcs.
- ___ 5. Colonial 8 1/2" pair of candlesticks - jade blue
- ___ 6. Colonial 8 1/2" pair of candlesticks - russet
- ___ 7. Colonial 8 1/2" pair of candlesticks - celest blue w/gold trim
- ___ 8. Florentine 8 1/2" pair of candlesticks - marigold
- ___ 9. Deco Stripes 9" vase - marigold - made by the Hortensja Glassworks in Poland
- ___ 10. Deco Stripes 9 1/2" vase - marigold - Hortensja Glassworks, chip on base
- ___ 11. **M'burg Wild Rose 9 1/2" tall, 6" base kerosene lamp - amethyst - font has been reattached**
- ___ 12. Luster Rose fernery - amberina - rare color
- ___ 13. Luster Rose fernery - lavender/blue - edge chip
- ___ 14. Luster Rose fernery - purple - gorgeous!
- ___ 15. Luster Rose fernery - fiery amethyst or red - very dark irid.
- ___ 16. Illusion bonbon - blue
- ___ 17. **Diamond Rib 19" funeral vase - green - super rare & nice**
- ___ 18. **Diamond Rib 19 1/2" funeral vase - amethyst - extremely rare & nice**
- ___ 19. Peacock & Grape ruffled bowl - marigold
- ___ 20. Fruits & Flowers 7" ruffled bowl - green
- ___ 21. **Australian Thunderbird master ruffled bowl - purple - super pretty**
- ___ 22. Australian Thunderbird master ruffled bowl - marigold - scarce, nice
- ___ 23. Australian Thunderbird ruffled sauce - purple - silvery
- ___ 24. Australian Thunderbird ruffled sauces (2) - marigold - choice
- ___ 25. Large ftd shell - amethyst
- ___ 26. Large ftd shell - aqua
- ___ 27. Large ftd shell - marigold
- ___ 28. **Rose Show 9" plate - ice blue - super pretty & highly desirable**
- ___ 29. **Rose Show 9" plate - green - buffed spot on base, epoxy on rose**
- ___ 30. **Rose Show 9" plate - blue - pretty plate w/electric highlights**
- ___ 31. Fine Cut & Roses rose bowl - green - pretty
- ___ 32. Fine Cut & Roses rose bowl - purple
- ___ 33. Grape & Cable 8" handgrip plate - purple
- ___ 34. Six Petal tri-cornered bowl - peach opal
- ___ 35. Australian Gum Tips 9 1/2" funeral vase - marigold - has 4 3/4" base
- ___ 36. Australian Gum Tips 10 1/2" funeral vase - pink, non-iridized - has 4 3/4" base
- ___ 37. Australian Gum Tips 8 1/2" vase - purple - has 3 7/8" base
- ___ 38. Australian Gum Tips 8 1/2" vase - marigold - has 3 7/8" base
- ___ 39. Australian Lily 8 1/2" vase - purple - has 2 3/4" base, chip on top edge
- ___ 40. Australian Lily 8 1/2" vase - marigold - has 2 3/4" base
- ___ 41. Australian Lily 8 1/2" vase - pink, non-iridized - has 2 3/4" base
- ___ 42. **Dragon & Lotus ruffled bowl - amethyst opal - very rare bowl, highly desirable**
- ___ 43. Dragon & Lotus ruffled bowl - peach opal - very pretty, scarce
- ___ 44. M'burg Grape Wreath Variant 8" crimped edge bowl - amethyst - radium
- ___ 45. Fruits & Flowers 10" ruffled bowl w/BW back - marigold
- ___ 46. Australian Butterfly Bush IC shaped large compote - purple - 8 1/2" bowl, pretty
- ___ 47. Ski Star large ruffled bowl - peach opal
- ___ 48. Australian Butterfly Bush round IC shaped compote - purple - 7" bowl - pretty
- ___ 49. Basketweave Open Edge JIP basket - amber - some may call red
- ___ 50. Basketweave Open Edge JIP basket - marigold
- ___ 51. **Stippled Three Fruits spt ftd ruffled bowl - lime green opal - has butterscotch irid., nice**
- ___ 52. **Stippled Three Fruits spt ftd ruffled bowl - aqua opal - pastel & beautiful**
- ___ 53. Stretch glass match holder - celest blue - nice
- ___ 54. Match holder - marigold
- ___ 55. **Tree Trunk 13 1/2" elephant's foot funeral vase - purple - minor restoration on base - scarce & highly desirable**
- ___ 56. Sunflower spt ftd ruffled bowl - green
- ___ 57. Imperial Grape rose bowl - amber - super pretty, a beauty
- ___ 58. **Pony 6 ruffled bowl - aqua - rare color**
- ___ 59. Holly 3 in 1 edge ruffled bowl - amethyst - pretty
- ___ 60. Holly 3 in 1 edge ruffled bowl - lime green w/marigold overlay
- ___ 61. Samovar or blown glass urn - marigold
- ___ 62. Beaded Bullseye 11" vase - purple - pretty
- ___ 63. Beaded Bullseye 13" vase - amber - pretty
- ___ 64. Beaded Bullseye 12" vase - marigold
- ___ 65. Quilted Rose 5 pc. round berry set - marigold - possibly EDA

- ___ 66. **Scroll Embossed deep ruffled bowl - emerald green - super!**
- ___ 67. Scroll Embossed ruffled bowl - marigold - dark & pretty
- ___ 68. **Grape & Cable 7 pc. water set - green - scarce, nice**
- ___ 69. Palm Beach tumbler - white
- ___ 70. Palm Beach tumbler - honey amber
- ___ 71. Fircone 11 3/4" vase - marigold
- ___ 72. Three Fruits 9" plate w/BW back - purple - super pretty
- ___ 73. Australian Kingfisher master ruffled bowl - purple - nice
- ___ 74. Australian Kingfisher ruffled saucers (2) - marigold - choice
- ___ 75. **Plume Panels 10 1/2" vase - red - scarce & highly desirable, very pretty**
- ___ 76. Plume Panels 11" vase - blue
- ___ 77. Plume Panels 14" vase - amethyst - nice
- ___ 78. Holly & Berry tri-cornered hdd nappy - purple - pretty
- ___ 79. Pansy low ruffled plate - lavender - super pretty
- ___ 80. Pansy ruffled bowls (2) - purple - both super nice, choice
- ___ 81. Vintage small size epergne - amethyst - nice
- ___ 82. Vintage small size epergne - marigold
- ___ 83. **Pineapple 10 1/2" ruffled ftd fruit bowl - marigold - very rare bowl**
- ___ 84. Enameled Dugan Cherries ftd ruffled bowl - peach opal - pretty
- ___ 85. **Stippled Three Fruits 9" plate w/ribbed back - lavender - super pretty irid.**
- ___ 86. Stippled Three Fruits 9" plate w/ribbed back - amethyst
- ___ 87. Stippled Three Fruits 9" plate w/ribbed back - marigold
- ___ 88. Wishbone ftd ruffled bowl - purple
- ___ 89. Knotted Beads 11 1/2" vase - amethyst - absolute beauty
- ___ 90. Knotted Beads 9 1/2" vase w/crimped top - amber - nice
- ___ 91. **Blackberry Spray ruffled hat - aqua opal - scarce, nice**
- ___ 92. Blackberry Spray ruffled hat - lime green - nice
- ___ 93. Grape & Cable PCE bowl w/BW back - purple
- ___ 94. **Luster Rose ftd centerpiece bowl - purple - scarce & fantastic!**
- ___ 95. Luster Rose ftd centerpiece bowl - amber - also super pretty
- ___ 96. N's Stippled Rays 10" PCE bowl - purple
- ___ 97. Imperial Grape wine bottle & 1 wine - green
- ___ 98. Imperial Grape 7 pc. wine set - marigold
- ___ 99. Imperial Jewels 8 1/2" large ruffled top vase - amethyst - has Imperial Cross mark
- ___ 100. Imperial Jewels 5" vase - purple
- ___ 101. Imperial Jewels 5" vase - marigold - has Imperial Cross mark
- ___ 102. Imperial Jewels 6 1/2" vase - marigold - has Imperial Cross mark
- ___ 103. Imperial Jewels 5 1/2" square bowl - marigold - has Imperial Cross mark
- ___ 104. Ripple 20" funeral vase - purple - has 4 5/8" base, chip on backside of top edge
- ___ 105. Ripple 18 1/2" funeral vase - green - has 4 5/8" base, chip on top edge
- ___ 106. Ripple 19 1/2" funeral vases (2) - marigold - have 4 5/8" bases, choice
- ___ 107. Grape & Cable ruffled bowl w/BW back - amethyst
- ___ 108. Wreathed Cherries banana boat - white w/gold cherries
- ___ 109. Grape & Cable orange bowl - purple - scarce
- ___ 110. N's Peacock at Urn IC sauce - purple
- ___ 111. Inca bottles (5) - 2 amethyst, 3 marigold - all different, choice
- ___ 112. **Grape & Cable spt ftd 9" plate - ice green - scarce & desirable, nice**
- ___ 113. Pansy round pickle dish - smoke - pretty
- ___ 114. Pansy round pickle dish - green
- ___ 115. Australian Emu giant ruffled compote - marigold - scarce
- ___ 116. Open Rose round bowl - blue - scarce color
- ___ 117. **Grape & Cable Master 8 pc. punch set - purple - super, super pretty set, does have a couple of bursts inside of bowl**
- ___ 118. Lady Berkshire cvd military hat powder jar - marigold - has original paper label
- ___ 119. Vintage CRE bowl - green
- ___ 120. N's Thin Rib 14 1/2" mid-size vase - sapphire - 1" heat check in body of vase, nice
- ___ 121. Golden Pansies 5 pc. berry set - clear w/marigold Pansies
- ___ 122. Grape & Cable dresser tray - marigold
- ___ 123. Grape & Cable pin tray - marigold
- ___ 124. Curved Star 9 1/2" vase - marigold - mold roughness on base
- ___ 125. Curved Star 9 1/2" vase - red - non-iridized
- ___ 126. Fenton's #549 5 1/4" pair of candlesticks - marigold
- ___ 127. Enameled Cherries & Little Flowers 7 pc. water set - blue
- ___ 128. N's Stippled Rays ruffled bowl - green
- ___ 129. Rustic 16" mid-size vase - green
- ___ 130. Rustic 16" mid-size vases (3) - amethyst - choice

- ___ 131. Rustic 16" mid-size vase - blue
 ___ 132. Rustic 16" mid-size vase - marigold
 ___ **133. Australian Swan ruffled master bowl - purple - pretty**
 ___ 134. Australian Swan ruffled sauce - purple
 ___ 135. Australian Swan ruffled master bowl - marigold - pretty
 ___ 136. Australian Swan ruffled sauces (2) - marigold
 ___ 137. Trumpet 6 1/2" candlesticks & centerpiece bowl - celest blue stretch
 ___ **138. Orange Tree w/trunk ruffled bowl - green - scarce bowl**
 ___ 139. Rose Garden 11" cylinder vase - blue - typical nick on base
 ___ 140. Three Fruits ruffled bowl w/plain back - purple
 ___ 141. Leaf Swirl ruffled compote - aqua
 ___ 142. Leaf Swirl ruffled compote - marigold
 ___ 143. Leaf Swirl ruffled compote - amethyst
 ___ **144. Grape & Cable hldd bonbon - white - scarce, nice**
 ___ 145. Grape & Cable hldd bonbon - blue - scarce, has electric highlights
 ___ 146. Grape & Cable hldd bonbon - green - pretty
 ___ 147. Grape & Cable hldd bonbon - marigold - nice
 ___ 148. Ripple 7" squatty vase - purple - has 3 1/4" base
 ___ 149. Pansy ruffled pickle dish - purple
 ___ 150. Pansy ruffled pickle dish - green
 ___ 151. Pansy ruffled pickle dish - marigold
 ___ **152. Imperial Grape 8 pc. punch set - purple - super pretty set, rare & desirable**
 ___ 153. April Showers 11" vases (2) - green - choice
 ___ 154. April Showers 11" vase - marigold - has crimped top
 ___ 155. Trumpet pair of candlesticks w/centerpiece bowl - wisteria - trimmed in gold
 ___ 156. Double Dutch ftd ruffled bowl - green
 ___ **157. Open Rose 9" plate - purple - slight restoration on rose**
 ___ 158. Two tier bowls w/dancing nude - marigold
 ___ 159. Drapery rose bowl - aqua opal - nice
 ___ 160. Garden Path Variant rose bowl - marigold - rare rose bowl
 ___ 161. Kulor 7 1/2" vase - blue - scarce
 ___ 162. Imperial Grape ruffled bowl - purple - pretty
 ___ 163. Imperial Grape ruffled bowl - lavender
 ___ 164. Imperial Grape ruffled bowl - marigold - nice
 ___ 165. Golden Cupid small berry bowl - cupid is clear
 ___ **166. Morning Glory 17" funeral vase - purple - nice**
 ___ 167. Morning Glory 17" funeral vase - green - chip on base
 ___ 168. Morning Glory 17 1/2" funeral vase - marigold - nice
 ___ 169. Decanters including Horn of Plenty, Enameled Flower and Matching enameled scenic - marigold - choice
 ___ **170. Persian Medallion bonbon - red - scarce**
 ___ 171. Persian Medallion bonbon - aqua
 ___ 172. Persian Medallion bonbon - lime green w/marigold overlay
 ___ 173. Persian Medallion bonbon - marigold
 ___ **174. N's Ftd Fine Rib JIP vase - purple - super pretty**
 ___ **175. Fenton's Ftd Fine Rib JIP vase - powder blue w/marigold overlay - only one I've seen like it!**
 ___ 176. Dugan Estate vases (2) - green & marigold - choice
 ___ 177. Octagon compote - purple - pretty
 ___ 178. Sunflower & Diamond 9 1/2" vase - marigold
 ___ 179. Wishbone & Spades 10" ruffled bowl - purple
 ___ 180. M'burg Grape Wreath IC shaped sauces (2) - amethyst - radium, choice
 ___ **181. Australian Emu large ruffled bowl - aqua - rare color**
 ___ 182. Australian Emu ruffled sauce - marigold
 ___ **183. Imperial Grape water pitcher - smoke - scarce color**
 ___ 184. Imperial Grape 7 pc. water set - marigold
 ___ 185. Imperial Grape tumblers (6) - purple - choice
 ___ **186. Fashion punch bowl top - purple - very rare, not many around**
 ___ 187. Premium console set - marigold
 ___ **188. NUART Homestead chop plate - purple - super pretty, rare**
 ___ 189. Smooth Panels 7 1/2" squatty vase - smoke
 ___ 190. Open Rose rose bowl - amber - very pretty
 ___ 191. Australian Magpie master ruffled bowl - marigold - nice
 ___ 192. Australian Magpie ruffled sauces (2) - purple - choice
 ___ 193. Australian Magpie ruffled sauce - pink - not iridized
 ___ **194. Stippled Grape & Cable 7 pc. small size punch set - blue - very rare, chipped point on bowl**
 ___ 195. Decorated Caroline ruffled bowl - peach opal
 ___ 196. Tree Trunk 12" mid-size vase - purple - scarce
 ___ 197. Ftd Orange Tree water pitcher - marigold
 ___ 198. Ftd Orange Tree tumblers (2) - marigold - choice
 ___ 199. Two-handled vase - smoke
 ___ 200. Stippled Grape & Cable bonbon - blue - scarce color
 ___ 201. Stippled Grape & Cable bonbon - marigold
 ___ 202. Blackberry Open Edge ruffled basket - amethyst
 ___ **203. Good Luck ruffled bowl w/ribbed back - aqua opal - butterscotch & pretty, a nice one**
 ___ 204. Ripple 12" vase w/3 1/4" base - smoke
 ___ 205. Ripple 12 1/2" vase w/3 1/4" base - olive green
 ___ 206. Butterfly & Berry 7 pc. water set - marigold

- ___ 207. Australian Hobnail giant compote - marigold
- ___ 208. Whiskey bottles including: Golden Wedding Pint bottle in box, Golden Wedding 1/10th Pint bottle, Continental Distilling Corp. bottle and G.Bartells Brandy bottle - choice
- ___ 209. Scarab paperweight - green base color
- ___ 210. Scroll Embossed 4" bowl - marigold
- ___ **211. Fenton's Fine Rib 9" vase - red - has neat red stripes in vase**
- ___ 212. Fenton's Fine Rib 10" vase - vaseline opal - rare vase, has repaired base
- ___ 213. Fenton's Fine Rib 10" vase - blue
- ___ 214. Stretch glass ashtray - celest blue
- ___ 215. Grape & Cable IC sauce - ice green - nice
- ___ 216. Skull jar w/lid - marigold - very unusual
- ___ 217. Oval Star & Fan ftd rose bowl - marigold
- ___ **218. Hearts & Flowers ruffled compote - aqua opal - butterscotch & pretty**
- ___ 219. Golden Crystal w/Plums berry bowls (2) - marigold - choice
- ___ 220. Burning Tree enameled vase - marigold
- ___ **221. Rustic 19" funeral vase - green - scarce, nice**
- ___ **222. Rustic 21" funeral vase - blue - scarce**
- ___ 223. Roll 6" bulbous vase - smoke
- ___ 224. Roll 9 1/2" vase - marigold
- ___ 225. Australian Kookaburra large ruffled bowl - marigold
- ___ 226. Candlestick vases, pair - celest blue
- ___ 227. Grape & Cable powder jar - purple
- ___ 228. Basketweave Open Edge ruffled basket - blue
- ___ 229. Whirling Hobstar water pitcher - marigold - we are not positive about the name of this
- ___ 230. Whirling Hobstar juice glasses (2) - marigold - choice
- ___ 231. Bullseye & Beads 14 1/2" vase - blue - pretty
- ___ 232. Bullseye & Beads 13" vase - marigold
- ___ 233. Australian Butterfly Bush & Flannel large compote - marigold - nice
- ___ 234. Shell & Sand deep ruffled bowl - purple - pretty
- ___ 235. Fisherman's mug - marigold - nice
- ___ 236. Fisherman's mug - purple
- ___ 237. Orange Tree IC shaped bowl - blue - pretty
- ___ 238. Thumbprint? mustard jar w/lid - marigold
- ___ **239. Stippled Peacocks 9" plate w/ribbed back - marigold - scarce**
- ___ 240. Golden Pansies oval pin dish
- ___ **241. Flute toothpick - blue - extremely rare, nice**
- ___ 242. Flute toothpick - purple - nice
- ___ 243. Flute toothpick - green
- ___ **244. M'burg Bernheimer Brothers Many Stars ruffled bowl - blue - extremely rare & pretty**
- ___ 245. Autumn Acorn 3 in 1 edge bowl - green
- ___ **246. Morning Glory 13" funeral vase - marigold - dark & nice**
- ___ 247. Purple tumblers including: N's Dandelion, Luster Rose and Field Flower - choice
- ___ 248. Kerosene lamps (5) - marigold - choice
- ___ 249. Enameled decorated powder jar - marigold
- ___ 250. Good Luck PCE bowl w/ribbed back - blue - nice
- ___ 251. Roll water pitcher - marigold
- ___ **252. M'burg Wild Rose 8" kerosene lamp, has 6 1/4" base - amethyst - heat check in font**
- ___ 253. Ripple 10 1/2" vase - olive green - has 2 7/8"
- ___ 254. Ripple 9" vase - amber - has 2 7/8" base
- ___ 255. Leaf & Beads rose bowl - white
- ___ 256. Rabbit banks (2 large, 2 small) - marigold - choice
- ___ 257. Australian Kangaroo large ruffled bowl - marigold
- ___ 258. Australian Kangaroo ruffled sauce - purple
- ___ 259. Dragon & Lotus IC shaped bowl - blue
- ___ **260. Grape & Cable candle lamp - marigold - scarce & desirable**
- ___ 261. 2-Handled 8" vase - smoke
- ___ 262. 2-Handled 8" vase - marigold
- ___ 263. Diamond Lace 7 pc. water set - purple - nice set
- ___ 264. Palm Beach 6" plate - amethyst - scarce
- ___ 265. Vintage crimped edge ruffled bowl - blue opal - not carnival
- ___ **266. Plaid IC shaped bowl - red - extremely rare bowl, highly desirable**
- ___ 267. Imperial Grape round bowl - amberina - not carnival, has Imperial Cross mark
- ___ 268. Buzz Saw lg size cruet - marigold
- ___ 269. Tree Trunk 10 1/2" vase - purple - pretty
- ___ 270. Australian Butterfly & Christmas Bells small size ruffled compote - marigold
- ___ 271. Butterfly 5 pc. tray set - blue
- ___ 272. Butterfly 5 pc. tray set - marigold
- ___ 273. Large butterfly tray - aqua
- ___ **274. Rustic 22" funeral vase w/plunger base - amethyst - super, super pretty, minor manufacture open bubble on base**
- ___ 275. Open Rose ruffled bowl - amber
- ___ 276. M'burg Nesting Swan ruffled bowl - green - satin, nice
- ___ 277. Twins fruit bowl top - smoke - rare color
- ___ 278. Wills Gold Flake ashtray - marigold
- ___ **279. Heavy Grape 8" plate - smoke - very scarce plate & nice**
- ___ 280. Heavy Grape 8" plate - purple - very pretty
- ___ 281. Grape & Cable banana boat - purple
- ___ 282. Blue tumblers including: Blueberry, Beaded Shell, and Stork & Rushes - choice
- ___ **283. Fenton's Flute 8 1/2" vase - red - tiny manufacture separation on base, rare**

- ___ 284. M'burg Holly Sprig 8" ruffled bowl - amethyst
- ___ 285. Ripple 15" vase - green - has 3 7/8" base
- ___ 286. Good Luck ruffled bowl w/BW back - purple
- ___ 287. Dragon & Lotus 3 in 1 edge bowl - marigold
- ___ 288. Scroll Embossed ruffled bowl w/File back - amberina - very rare, does have crack
- ___ 289. Corinth JIP 8" vase - aqua - scarce
- ___ 290. Corinth JIP 9" vase - amber
- ___ 291. Corinth JIP 8 1/2" vase - amethyst
- ___ 292. Butterfly & Berry whimsy turned down hat - blue - unusual
- ___ 293. Dolphin low candlesticks - ice green - not carnival
- ___ **294. Colonial Lady vase - marigold - very scarce, nice**
- ___ 295. Imperial Grape ruffled compote - purple
- ___ 296. N's Flute 22" funeral vase - green - has 4 3/4" base
- ___ 297. N's Flute 15 1/2" mid-size vase - marigold
- ___ **298. Fenton's Peacock at Urn 9" plate - blue - super pretty**
- ___ 299. Pair of Dove? candlesticks - marigold
- ___ 300. Australian Butterfly Bush & Flannel Flower large ruffled compote - marigold
- ___ 301. Diamond Points 11" vase - green
- ___ 302. Diamond Points 10" vase - purple
- ___ 303. Diamond Points 10" vase - marigold
- ___ **304. Holly ruffled compote - red - super nice**
- ___ 305. Cvd pin dish, souvenir of Chippewa Lake, Mich. - marigold
- ___ 306. N's Bushel basket - blue
- ___ 307. N's Bushel basket - purple
- ___ 308. N's Bushel basket - marigold
- ___ 309. Brocaded Summer Garden centerpiece bowl - white
- ___ 310. Windmill milk pitcher - smoke - nice
- ___ 311. Peacock Tail 7 pc. berry set - marigold
- ___ 312. Dragon & Lotus 3 in 1 edge bowl - peach opal
- ___ 313. Diamantes Star vase - aqua - rare color
- ___ 314. Floral & Optic rose bowl - smoke
- ___ 315. Unusual rectangular dresser tray w/intaglio flower - marigold
- ___ 316. Ripple 10 1/2" vase - purple - has 3 7/8" base
- ___ 317. Unusual quart canning jar - marigold
- ___ 318. Fluffy Peacock tumbler - amethyst
- ___ 319. Ftd Prism Panels vase - marigold
- ___ 320. N's Peacock at the Fountain 7 pc. water set - purple - scarce
- ___ 321. Dolphin fan vase - pink stretch
- ___ 322. Australian Butterfly Bush small ruffled compote - purple - nice
- ___ 323. Daisy Squares ruffled compote - marigold
- ___ 324. Colonial sherbet - red stretch
- ___ **325. Basketweave Open Edge 8" vase - marigold - very scarce & highly desirable, nice**
- ___ 326. Banded Fleur de Lis celery vase - marigold
- ___ 327. Freefold 11" vase - smoke
- ___ 328. Fenton's Peacock at Urn ruffled compote - amethyst
- ___ 329. Sunken Daisy small size rose bowl - blue
- ___ 330. Lined Lattice 9" vase - purple
- ___ 331. Basketweave Open Edge 2 sides up basket - marigold
- ___ 332. 1910 New Orleans Shriner champagne in original box - neat
- ___ 333. Poppy pickle dish - marigold - pretty
- ___ 334. Beaded Spears juice glass - aqua
- ___ **335. Concord 9" plate - amethyst - very pretty, highly sought after**
- ___ 336. Little Barrel - marigold - nice
- ___ 337. Orange Tree shaving mug - blue
- ___ 338. Blackberry Open Edge 2 sides up basket - blue
- ___ 339. Shell & Jewel cvd sugar bowl - green
- ___ **340. Tree Trunk 19" funeral vase - purple - very scarce & highly desirable**
- ___ 341. Vintage powder jar bottom - purple - pretty
- ___ 342. Carnival Beaded dress
- ___ 343. Box full of Carnival Glass literature
- ___ 344. Misc. pcs. of marigold Carnival glass - choice
- ___ 345. Contemporary Pcs. including: Poppy Show vase - white; Scroll & Flower Panels vase - smoke; Hobnail kerosene Lamp - amethyst; Poppy Kerosene Lamp - red; Loganberry vase - white; Pony Bowl - blue - choice

