



is proud to present the

2010 Tampa Bay Carnival Glass Club Convention Auction

Saturday, February 6th, 2010

Auction starts at 9:30 am

Preview on Friday, February 5th after Banquet Approx. 8:30 pm
and on Saturday, February 6th from 8:00 to 9:30 am

Dolphin Beach Resort

4900 Gulf Boulevard, St. Pete Beach, Florida 33706
Phone: 727-360-7011

Public Welcome



180



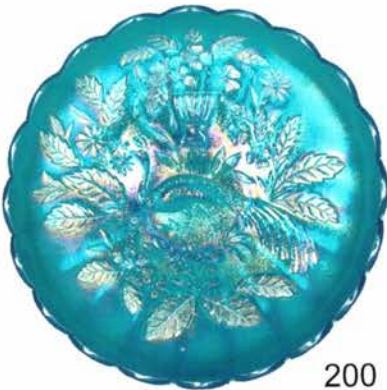
160



231



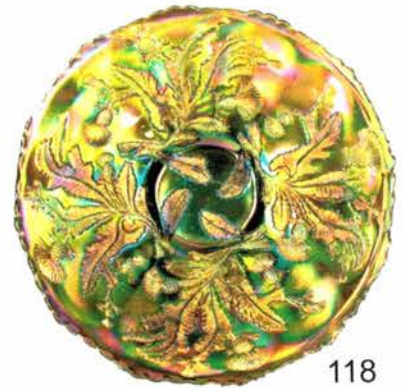
232



200



18



118



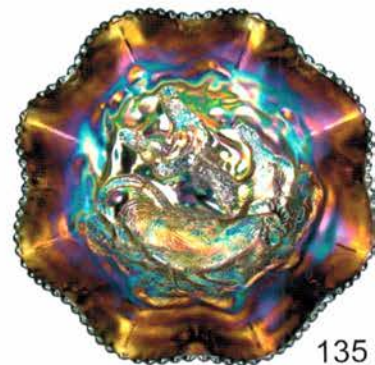
140



141



169



135

2010 Tampa Bay Carnival Glass Club Convention Auction

Dolphin Beach Resort • 4900 Gulf Boulevard • St. Pete Beach, Florida 33706 • **Reservations:** 727-360-7011

Convention Room Rate \$95.00 and Up, plus tax. Rate is good until January 13th, 2010. After this date, please ask for Barbara Dodge

We would like to invite you all to join us for the Tampa Bay Carnival Glass Convention auction, on February 6th, 2010. We are very pleased to be back at the Dolphin Beach Resort Hotel. If you have not had the chance to attend this convention, it is really awesome. The collection we will be offering this year is absolutely magnificent. Please call now and make your reservations! If you cannot attend, absentee/ phone is accepted.

Please phone our office at 503-256-1226 or 503-756-2629. All absentee and phone bids are due by, Friday February 5th, 6:00pm EST. Live Internet Bidding is available on Proxibid. **PUBLIC WELCOME**

Absentee Bid Policy

Absentee / Phone bids will be gladly accepted by either placing bids through our website or contacting us at our office: (503) 256-1226 or (503) 756-2629. **The deadline for all absentee bids will be Friday, February 5th, 2010, 6:00 pm EST.** A Credit Card may be required for submitting absentee or live phone bids if not known by Remmen Auction. By submitting an absentee/ phone bid you are entering a contractual agreement with Remmen Auction Service and will take full responsibility to honor any/or all bids we may execute for you. Items are bid on in excellent condition without damage OR as described in our brochures. We will always do our best to describe each item as accurately as possible. All of the items in this auction are photographed and you may view each item on our website. Our photos are extremely accurate, so please use your own judgment concerning color and iridescence when placing an absentee bid through our site. We will not accept frivolous returns. Your absentee bid will be entered just as if you are present at the auction and bidding yourself. Bids will not be executed if damage to any item is found during the auction that has not been described in brochure. A \$7.50 handling charge for each successful absentee bid will be added to the selling price, \$25.00 for larger items. Auctioneer will notify successful bidders within 1-7 days of auctions end. Payment in full, plus estimated postage, insurance, and handling are required within 10 days of notification and before any item is shipped or delivered to buyer. Due to travel time for this auction, please allow 3 to 4 weeks for delivery of your items. In the event of a tie bid, bidders in attendance will have precedence over all absentee bids. In the event of a tie bid between absentee bidders, the earliest bid received will have precedence. Remmen Auction offers absentee/phone bidding as a convenience to our customers and will not be held responsible for errors or failure to execute bids.

Live Phone Bidding

Live phone bidding will be accepted at this auction. Due to limited phone space, please be sure to submit your phone bid request early. **Due to limitation, we apologize we cannot accept phone bids with an auction estimate below \$500.00. All phone bid request must be submitted no later than Friday, February 5th, 6:00 pm EST.**

Terms and Conditions of Sale

Cash, Pre-approved Check, Visa, MasterCard, Discover Card, and American Express are accepted. A 4% Buyer's Premium will apply to all purchases with the exception of Cash or Check. All items must be paid for before they leave the premises. All statements made the day of sale will take precedence over any and all printed material. All items are being sold without guarantee or warranty implied, regardless of statements made by auctioneers or staff. Auction Company is not responsible for any accidents, thefts, breakage, or sold items. Remmen Auction reserves the right to withdraw any property at any time before and during the actual sale. All sales are final once the item leaves the auction location.

Please visit our website for complete listing and photos of all items to be sold!

www.remmenauction.com

Debra Jo Remmen

Auctioneer

Phone: (503) 256-1226

Cell Phone: (503) 756-2629

e-mail: debra@remmenauction.com



Kris K. Remmen

Auctioneer/Auction Manager

Phone: (503) 256-6931

Cell Phone: (503) 757-5327

e-mail: kris@remmenauction.com



Members of: National Auctioneers Association
Oregon Auctioneers Association

Graduate of Missouri Auction School
Graduate of Mendenhall School of Auctioneering
Licensed Auctioneers in the State of Florida
Licensed Auctioneer in the State of Ohio
Licensed Auctioneers in the Commonwealth of Virginia
Licensed Auctioneer in the State of North Carolina



92



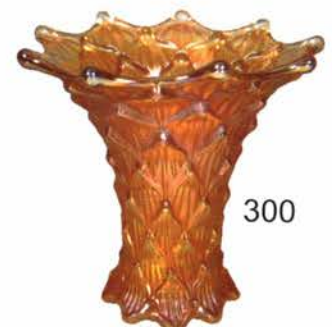
67



197

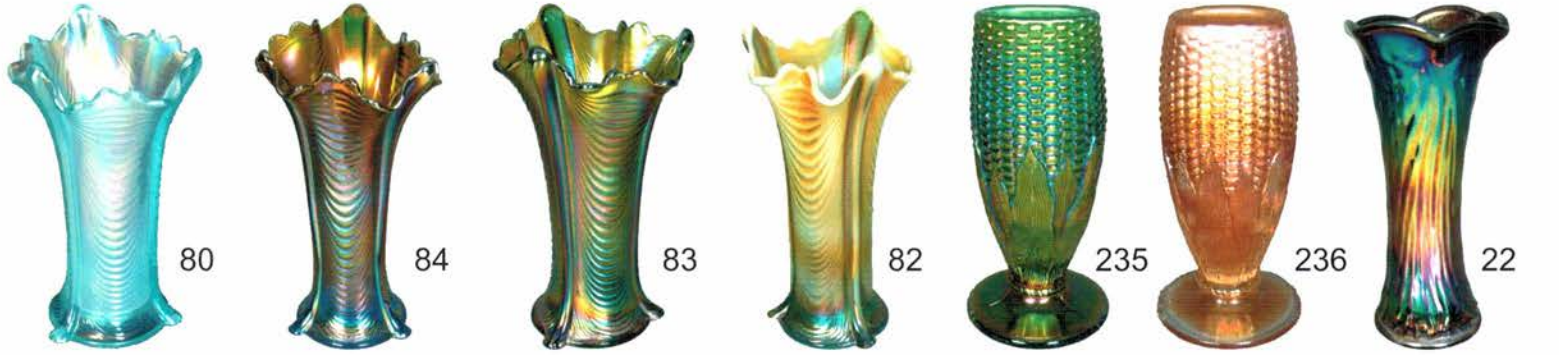


269



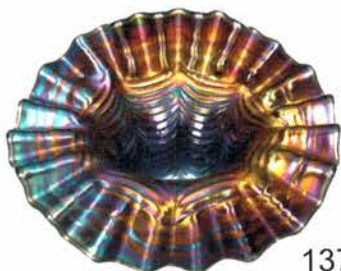
300

- 1 Dugan Marigold Constellation Compote.
- 2 Dugan Frosty White Constellation Compote.
- 3 Dugan Light Amethyst Constellation Compote. Beautiful Iridescence
- 4 Imperial Electric Purple Scroll Embossed 3" Miniature Compote.
- 5 Northwood Green Fine Cut and Roses Footed Candy Dish. Near Emerald with Plain Interior
- 6 Very Scarce Northwood Blue Fine Cut & Roses Candy Dish. Has Fancy Interior
- 7 Cambridge Green Near Cut Cologne Bottle.
- 8 Cambridge Green Inverted Strawberry Single 7" Candlestick. Beautiful.
- 9 Dugan Black Amethyst Mae West 8" Candlestick.
- 10 Pair of Fenton Five Forty Nine Wisteria Candlesticks.
- 11 Beautiful Fenton Amethyst Captive Rose Bowl with 3/1 Edge.
- 12 Fenton Amethyst Captive Rose Bowl with CRE.
- 13 Fenton Electric Blue Panther Master Berry Footed Bowl.
- 14 Gorgeous Fenton Marigold Panther Master Berry Footed Bowl.
- 15 Super Northwood White Acorn Burrs Punch Bowl and Base. Bowl has Internal Crack
- 16 Beautiful Northwood Green Acorn Burrs Punch Set. Including Eight Cups
- 17 Beautiful Northwood Purple Acorn Burrs Punch Set. Including Eight Cups
- 18 Beautiful Ice Blue Acorn Burrs Punch Bowl and Base. Has Wonderful Pastel Iridescence.
- 19 Six Northwood Ice Blue Acorn Burrs Punch Cups. Super Pretty
- 20 Dugan Electric Purple Circle Scroll Swung 9 3/4" Vase.
- 21 Dugan Marigold Circle Scroll 7 1/4" Vase.
- 22 Dugan Electric Purple Nautilus 7" Vase.
- 23 Dugan Blue Big Basketweave 10" Vase.
- 24 Dugan Ice Blue Big Basketweave 11 1/2" Vase. Another Beauty
- 25 Dugan Electric Lavender Big Basketweave Vase. 10 1/2"
- 26 Dugan Celeste Blue Big Basketweave 9 3/4" Vase. Covered with Iridescence
- 27 Dugan Electric Purple Big Basketweave 10" Vase.
- 28 Northwood Electric Blue Peacocks Stippled Plate.
- 29 Northwood Dark Marigold Stippled Peacocks Plate. Lots of Pink Iridescence
- 30 Northwood Reninger Blue Stippled Peacocks Plate. Ribbed Exterior
- 31 Northwood White Peacocks Plate. Ribbed Exterior
- 32 Northwood Green Peacocks Plate with Ribbed Exterior.
- 33 Northwood Aqua Opal Peacocks Ruffled Bowl.
- 34 Northwood Electric Purple Peacocks Ruffled Bowl. Ribbed Exterior
- 35 Fenton Electric Blue Orange Tree Loving Cup.
- 36 Fenton Red Little Flowers 9 1/4" ICS Bowl.
- 37 Fenton Electric Blue Peacock and Grape Ruffled Bowl.
- 38 Fenton Amethyst Ragged Robin 3/1 Edge Bowl.
- 39 Fenton Electric Blue Orange Tree Powder Jar and Lid.
- 40 Northwood Ice Blue Leaf Columns 7 1/2" Vase. Super Pastel Iridescence
- 41 Northwood Electric Purple Leaf Columns 6 1/2" Squatty Vase.
- 42 Northwood Pumpkin Marigold Leaf Columns 6" Squatty Vase.
- 43 Super Northwood Green Leaf Columns 6" Squatty Vase.
- 44 Northwood White Leaf Columns 10" Vase.
- 45 Northwood Sapphire Leaf Columns 10" Vase. Has Shallow Flake on Side of Base.
- 46 Northwood Ice Green Leaf Columns 10" Vase.
- 47 Northwood Pumpkin Marigold Greek Key Ruffled Bowl. Ribbed Exterior
- 48 Northwood Electric Purple Greek Key Ruffled Bowl. Ribbed Exterior
- 49 Super Northwood Green Greek Key PCE Bowl. Basketweave Exterior
- 50 Very Rare Northwood Electric Blue Stippled Powder Jar Bottom. If you have a top, here ya go!
- 51 Northwood Electric Purple Beaded Cable Rose Bowl. Outstanding Iridescence and Even
- 52 Northwood Pumpkin Marigold Beaded Cable Rosebowl.
- 53 Northwood Electric Blue Beaded Cable Rosebowl. Has Flake on Foot
- 54 Beautiful Northwood Emerald Green Leaf & Beads Rosebowl.
- 55 Northwood Pumpkin Marigold Leaf & Beads Rosebowl.
- 56 Northwood Electric Blue Leaf & Beads Rose Bowl. Good Feet
- 57 Millersburg Green Square Trout & Fly Bowl.
- 58 Millersburg Marigold Square Trout & Fly Bowl.
- 59 Millersburg Amethyst Square Trout & Fly Bowl.
- 60 Millersburg Green Trout & Fly ICS Bowl. Beautiful
- 61 Imperial Dark Marigold Thin Rib & Drape 5 1/4" Vase.
- 62 Imperial Electric Purple Thin Rib and Drape 6 1/2" Vase.
- 63 Imperial Electric Purple 8" Flute Vase.
- 64 Imperial Dark Marigold Parlor Panels 6 1/2" Vase.
- 65 Imperial Electric Purple Parlor Panels 9" Vase. WOW.
- 66 Imperial Smoke Parlor Panel 7 3/4" Vase. A Real Beauty.
- 67 Imperial Electric Purple Thumbprint and Ovals Vase. Has Bruise down in throat
- 68 Imperial Electric Purple Beaded Bullseye Squatty 7" Vase. Has 7 1/4" Opening.
- 69 Imperial Teal Floral Optic Footed Bowl.
- 70 Imperial Electric Purple Pansy Ruffled Bowl.
- 71 Imperial Amber Pansy Ruffled Bowl.
- 72 Imperial Smoke Hattie 8 1/2" Bowl. Super Color.
- 73 Northwood Pumpkin Marigold Acorn Burrs Pitcher. Lots of Pink Iridescence
- 74 Five Northwood Pumpkin Marigold Acorn Burrs Tumblers.
- 75 Dugan Electric Purple Persian Gardens Fruit Bowl and Base. Outstanding!!! Incredible Blue and Yellow Iridescence Inside and Out!
- 76 Dugan Peach Opal Persian Garden Fruit Bowl and Base. Base has chip on top edge
- 77 Northwood Dark Marigold Peacock at the Fountain Water Set. With 5 Tumblers
- 78 Northwood Green Acorn Burrs Pitcher. Nice One
- 79 Beautiful Northwood Dark Marigold Oriental Poppy Pitcher. Including One Tumbler
- 80 Northwood Ice Blue Drapery Vase. Great Iridescence with pretty darn good feet.
- 81 Northwood Electric Blue Drapery Vase. Has Good Feet. Has good feet
- 82 Northwood Aqua Opal Drapery Vase. Has Shallow Flake on Foot
- 83 Beautiful Northwood Green Drapery Vase. Has Flake on One Foot
- 84 Outstanding Northwood Sapphire Drapery Vase. Has Typical tiny nicks on some feet
- 85 Northwood Electric Blue Drapery Variant 8 1/2" Vase.
- 86 Northwood Pumpkin Marigold Drapery Variant 8 3/4" Vase.
- 87 Northwood Electric Purple Drapery Variant 8 1/2" Vase.
- 88 Northwood Electric Blue Drapery Footed 9" Vase.
- 89 Fenton Dark Marigold Kittens Plate.
- 90 Fenton Pale Lavender Kittens Plate with Two Sides Up.
- 91 Fenton Blue Kittens Cup. Has Wonderful Color and Strike.
- 92 Fenton Dark Marigold Kittens Cup & Saucer.
- 93 Fenton Blue Kittens Plate Four Sides Up.
- 94 Fenton Marigold Kittens Cereal Bowl.
- 95 Fantastic Dugan Lavender Fanciful Bowl with 3/1 Edge. Screaming Iridescence, Covered with Blues. Use to belong to Sherman Hand
- 96 Dugan White Fanciful Ruffled Bowl.
- 97 Dugan Electric Purple Cherries 6 1/4" Ruffled Plate.
- 98 Dugan Electric Purple Wishbone & Spades Ruffled Bowl.
- 99 Dugan Blue Round Up Plate. Pretty
- 100 Northwood Ice Blue Embroidered Mums Ruffled Bowl.
- 101 Northwood Pumpkin Marigold Embroidered Mums Ruffled Bowl. Ribbed Exterior
- 102 Northwood Aqua Embroidered Mums Ruffled Bowl.
- 103 Northwood Electric Blue Embroidered Mums Ruffled Bowl with. Ribbed Exterior
- 104 Northwood Purple Hearts & Flowers Plate with Ribbed Exterior. Very Pretty
- 105 Northwood Electric Purple Hearts & Flowers Compote.
- 106 Millersburg Amethyst Strawberry Compote. Gorgeous with Radium Iridescence
- 107 Millersburg Amethyst Tulip Scroll 7" Vase. Has two manufactures open bubbles on base edge.
- 108 Millersburg Marigold 6 1/2" Tulip Scroll Vase.
- 109 Millersburg Amethyst Bullseye & Loop 6 3/4" Vase. Has Manufactures Peeling Along Top Edge
- 110 Millersburg Green Bullseye & Loop 7" Vase. Has small amount of manufactures peeling on top edge
- 111 Millersburg Amethyst Courthouse Ruffled Bowl.
- 112 Fenton Amethyst 1910 Detroit Elks Ruffled Bowl.
- 113 Fenton Blue 1911 Atlantic City Elks ICS Bowl.

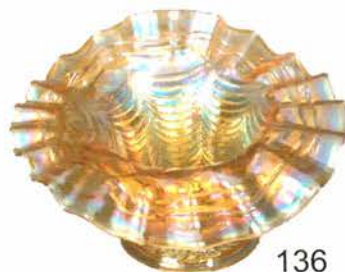


- 114 Fenton Light Marigold Spectors Dept. Store Plate.
- 115 Northwood Amethyst Fern Brand Chocolate Handgrip Plate.
- 116 Fenton Blue Illinois Soldier & Sailors Plate. Super Pretty
- 117 Fenton Dark Marigold Coral Plate. Great Mold Strike & Color
- 118 Gorgeous Fenton Green Thistle Plate. Has Slight Rub on Edge of Plate.
- 119 Fenton Amethyst Thistle Plate. Very Nice
- 120 Ultra Beautiful Northwood Electric Blue 6 1/2" Squatty Tree Trunk. Vase. Has Incredible Blue Iridescence and Looks Blue From Across the Room
- 121 Northwood White Tree Trunk 8" Vase.
- 122 Northwood Green Squatty 6 1/2" Tree Trunk Vase. near Emerald Green
- 123 Northwood Ice Blue Tree Trunk Vase.
- 124 Northwood Pastel Marigold Tree Trunk 7" Squatty Vase.
- 125 Northwood Electric Purple Tree Trunk 7" Squatty Vase.
- 126 Northwood Pastel Marigold Poppy Show Ruffled Bowl. Gorgeous
- 127 Northwood Lime Green Poppy Show Ruffled Bowl. Super
- 128 Northwood Pumpkin Marigold Poppy Show Bowl. The Best!
- 129 Northwood Ice Blue Poppy Show Plate. Very Pretty.
- 130 Northwood Marigold Poppy Show Plate. WOW.
- 131 Northwood Electric Purple Grape & Cable Fernery. Super and Even Iridescence
- 132 Northwood Green Stippled Grape and Cable Banana Boat.
- 133 Gorgeous Dugan Ice Green Ruffled Pony Bowl. Has Typical Edge Roughness
- 134 Dugan Light Amethyst Round Up ICS Bowl. Incredible Iridescence!
- 135 Dugan Electric Purple Eight Ruffled Farmyard Bowl.
- 136 Super Dugan Pastel Marigold Daisy Web JIP Hat with CRE.
- 137 Dugan Electric Purple Daisy Web JIP Hat with CRE.
- 138 Fantastic Fenton Emerald Green Concord Ruffled Bowl.
- 139 Fenton Amethyst Concord Ruffled Bowl. Gorgeous
- 140 Rare and Beautiful Blue Imperial Homestead Chop Plate. Signed Nuart
- 141 Imperial Electric Purple Homestead Chop Plate. Signed Nuart. A Real Beauty
- 142 Imperial Electric Purple Chrysanthemum Chop Plate. Signed Nuart. Another Beauty
- 143 Cristalerias Rigolleau Buenos Aires Marigold Beetle Ashtray. Beautiful Iridescence
- 144 Crown Crystal Purple Swan 9 1/2" Ruffled Bowl.
- 145 Crown Crystal Purple Kangaroo Ruffled Sauce.
- 146 Fenton Amethyst Rustic 18 1/4" Funeral Vase. Gorgeous Iridescence. Has Peeling Between Two Points
- 147 Fenton Blue Rustic 19 3/4" Funeral Vase. Has Minor Peeling on Top Edge
- 148 Fenton Marigold Rustic 18" Funeral Vase. Has Internal Bruise in Base
- 149 Super Fenton Emerald Green Rustic 17 3/4" Funeral Vase. Color From Top to Bottom. One of the Best, Near Emerald Green
- 150 Fenton Marigold Lions 7 1/2" Plate.
- 151 Fenton Blue Peacock & Grape Plate with Collar Base.
- 152 Fenton Electric Blue Pinecone 6 1/4" Plate.
- 153 Fenton Electric Blue Heart & Vine Plate.
- 154 Fenton Blue Persian Medallion 9 1/2" Plate with Plain Exterior.
- 155 Fenton Blue Peter Rabbit Plate. Great Mold Strike and Beautiful.
- 156 Fenton Electric Blue Peacock at Urn Plate.
- 157 Beautiful Fenton White Peacock at the Urn Plate. Lots of Iridescence
- 158 Northwood Aqua Opal Tree Trunk 9 1/2" Vase. Beautiful Butterscotch Overlay with Lots of Opal
- 159 Northwood Pumpkin Marigold Tree Trunk 10" Vase.
- 160 Northwood Marigold Tree Trunk 19" Funeral Vase. Very Rare Vase. Beautiful Color, Has 2" Chip on Base.
- 161 Northwood White Tree Trunk 10 3/4" Midsize Vase. Frosty and Beautiful
- 162 Northwood Electric Purple Tree Trunk 12 1/2" Midsize Vase. Radium iridescence
- 163 Northwood Marigold Tree Trunk 12 1/2" Midsize Vase. Gorgeous Color Top to Bottom
- 164 Northwood Electric Blue Tree Trunk 12 1/2" Midsize Vase. Radium Iridescence
- 165 Beautiful Northwood Green Grape Leaves Ruffled Bowl.
- 166 Northwood Electric Blue Wishbone Footed Bowl.
- 167 Northwood Ice Blue Nippon PCE Bowl.
- 168 Northwood Electric Purple Nippon PCE Bowl. Ribbed Exterior
- 169 Electric Purple Imperial Grape Water Pitcher.
- 170 Emerald Green Imperial Grape Water Pitcher. Has Internal Crack around Bottom of Pitcher. Still Gorgeous and Holds Water. Last Perfect One Brought \$25,000.
- 171 Beautiful Fenton Dark Marigold Wreath of Roses Punch Set. Vintage Interior with 5 cups
- 172 Beautiful Fenton Electric Blue Wreath of Roses Punch Set. Vintage Interior
- 173 Dugan Electric Purple Many Fruits Punch Set. Including Four Cups
- 174 Dugan Marigold Many Fruits Punch Set. Very Pretty Including 6 Cups
- 175 Imperial Smoke Gothic Arches 9 3/4" Vase.
- 176 Imperial Dark Marigold Ripple 12 1/4" Funeral Vase. 4 3/4" Base
- 177 Imperial Green Morning Glory 13" Funeral Vase.
- 178 Imperial Electric Purple Morning Glory 13" Funeral Vase. Has 10" Opening. Flake on Bottom Edge
- 179 Imperial Marigold Morning Glory 12 1/2" Funeral Vase.
- 180 Incredible Imperial Smoke Morning Glory Funeral Vase. 13" Tall with a 10" Mouth Opening. Has Heat Check in Body.
- 181 Northwood Pumpkin Marigold Rose Show Variant Ruffled Bowl.
- 182 Beautiful Northwood Lavender Rose Show Ruffled Bowl. Super Blue Iridescence
- 183 Northwood Pumpkin Marigold Rose Show Plate.
- 184 Northwood Emerald Green Rose Show Ruffled Bowl.
- 185 Fantastic Northwood Marigold Rose Show Plate.
- 186 Northwood Electric Purple Sunflower Bowl.
- 187 Northwood Blue Wild Rose Footed Nut Bowl.
- 188 Northwood Pumpkin Marigold Wild Rose Footed Nut Bowl.
- 189 Northwood Green Wild Rose Footed Nut Bowl.
- 190 Northwood Ice Green Thin Rib 12 1/2" Midsize Vase.
- 191 Northwood White Thin Rib Midsize 12" Funeral Vase.
- 192 Northwood Electric Purple Thin Rib Midsize 12" Funeral Vase.
- 193 Northwood Dark Marigold Thin Rib Midsize 12" Funeral Vase.
- 194 Incredible Northwood Electric Blue Thin Rib Midsize Vase. 13 1/2"
- 195 Northwood Ice Green Squatty Thin Rib 7 1/2" Vase.
- 196 Northwood Marigold Thin Rib 5 1/2" Squatty Vase.
- 197 Beautiful Northwood Green Thin Rib 6 1/4" Squatty Vase.
- 198 Northwood Vaseline Thin Rib 10 3/4" Vase.
- 199 Northwood Emerald Green Thin Rib 9 3/4" Vase.
- 200 Northwood Sapphire Peacock at the Urn Master ICS Bowl. Incredible Base Glass Color and Fantastic Iridescence. Just Incredible
- 201 Northwood Electric Blue Peacock at the Urn Master ICS Bowl.
- 202 Northwood Electric Purple Peacock at Urn Sauce. Very Flat. Almost a Plate
- 203 Northwood Electric Purple Peacock at the Urn Chop Plate.
- 204 Northwood Purple Grape & Cable Footed Centerpiece Bowl.
- 205 Northwood Grape & Cable Large Fruit Bowl. Very Nice.
- 206 Northwood Blue Stippled Small Grape & Cable Punch Set. Including 6 Cups
- 207 Northwood Stippled Marigold Grape & Cable Standard Punch Bowl and Base... Fantastic! Base has been repaired on top where punch bowl sits
- 208 Northwood "Smoke" Small Size Punch Bowl with Stippled Base. Extremely Beautiful & Rare. Punch Bowl Top has half a flute missing and base has internal crack on top where bowl sits
- 209 Northwood White Memphis Punch Bowl and Base. Beautiful Iridescence! Half of one knob on punch bowl is missing
- 210 Imperial Smoke Freefold 11" Vase.
- 211 Imperial Electric Purple 12" Freefold Vase.
- 212 Gorgeous Imperial Dark Marigold 5" Corn Bottle. Typical Flea Bites around Top Edge.
- 213 Super Beautiful Smoke Little Barrel.
- 214 Imperial Electric Purple Ripple 9 1/4" Vase. 5 3/4" Mouth Opening
- 215 Imperial Marigold Squatty Ripple 4 1/2" Vase. Super Piece!
- 216 Imperial Amber Ripple 7 1/2" Vase. Gorgeous Color
- 217 Imperial Teal Sweet Pea 4 1/2" Vase.
- 218 Imperial Red Smooth Panel 7 1/2" Vase with 6 3/4" Opening.
- 219 Imperial Teal Smooth Panels 7" Vase.
- 220 Northwood Emerald Green Three Fruits Plate. Basketweave Exterior
- 221 Northwood Electric Blue Three Fruits Stippled Ruffled Bowl.
- 222 Northwood Electric Purple Three Fruits Stippled Plate. Ribbed Exterior
- 223 Northwood Dark Marigold Three Fruits Stippled Plate. Ribbed Exterior
- 224 Northwood Electric Blue Stippled Three Fruits Plate. Ribbed Exterior

- 225 Northwood Sapphire Round Bushel Basket. Dripping with Beautiful Iridescence Evenly.
- 226 Northwood Aqua Opal Bushel Basket. Neat Opal Effect on Handles
- 227 Northwood Electric Purple Round Bushel Basket.
- 228 Northwood Green Octagonal Bushel Basket. Has two minor heat checks in base. Beautiful Iridescence
- 229 Northwood Reninger Blue Octagonal Bushel Basket.
- 230 Northwood Electric Purple Ribbed Tornado Vase.
- 231 Northwood Pumpkin Marigold Ribbed Tornado Vase.
- 232 Northwood Electric Blue Ribbed Tornado Vase.
- 233 Northwood Purple Corn Vase. Another Pretty One
- 234 Northwood White Corn Vase. Super Pretty & Frosty.
- 235 Super Fantastic Northwood Emerald Green Corn Vase. Stalk Base. One of the Best!
- 236 Northwood Marigold Corn Vase. Ditto
- 237 Northwood Dark Marigold Town Pump. Has Hairline and Flake by Handle
- 238 Fostoria White Poinsettia 11 1/2 "Brocaded Bowl. Baroque Exterior
- 239 Northwood Marigold Good Luck Plate. Basketweave Exterior
- 240 Northwood Emerald Green Good Luck Plate with Basketweave Exterior. Covered with Blue Iridescence
- 241 Northwood Electric Purple Good Luck Plate. Basketweave Exterior
- 242 Northwood Electric Purple Good Luck Ruffled Bowl. Plain Exterior
- 243 Northwood Electric Blue Good Luck Ruffled Bowl. Ribbed Exterior
- 244 Northwood Sapphire Good Luck Ruffled Bowl. Ribbed Exterior
- 245 Northwood Electric Purple Good Luck PCE Bowl. Ribbed Exterior
- 246 Westmoreland Amethyst Fruit Salad Punch Bowl and Base.
- 247 Beautiful Fenton Amethyst Wreath of Roses Punch Set. Persian Medallion Interior Including 6 cups. 2 have minor chips
- 248 Beautiful Fenton Dark Marigold Wreath of Roses Punch Set. Persian Medallion Interior with 6 cups
- 249 Gorgeous Fenton Green Wreath of Roses Punch Set. Persian Medallion Interior. Including 8 Cups, most have chips on collar base, 2 perfect
- 250 Imperial Electric Purple Broken Arches Punch Bowl & Base.
- 251 Dugan White and Radium Question Marks Footed Plate. Another Beauty
- 252 Dugan Super Marigold Question Marks Footed Plate.
- 253 Dugan Electric Purple Question Marks Footed Plate. Stunning
- 254 Fantastic Dugan Pastel Marigold Daisy Web Hat. Two Sides Up
- 255 Dugan Electric Purple Tri-Cornered Daisy Web Hat.
- 256 Dugan Electric Purple Persian Gardens 6 1/2" Plate.
- 257 Dugan Electric Purple Wishbone and Spades 6 1/2" Plate.
- 258 Dugan Electric Purple Twigs 7" Plate. Has Great Stretch Effect
- 259 Dugan Electric Purple Beaded Basket. Has Small Bruise down Inside Basket
- 260 Imperial Electric Purple Six Sided Candlesticks. Gorgeous.
- 261 Fenton Sapphire Knotted Beads 9 1/2" Vase with CRE.
- 262 Fenton Red Opal Slag Fine Rib 11" Vase. Has Opal Tips and Super Slag Base. Cherry Red
- 263 Fenton White /Ice Blue April Showers 7 1/2" Vase.
- 264 Northwood Electric Purple Stippled Strawberry Bowl. Ribbed Exterior
- 265 Northwood Marigold Stippled Strawberry Bowl with PCE. Very Pretty
- 266 Northwood Electric Purple Wild Strawberry 10" Ruffled Bowl.
- 267 Northwood Sapphire 12" Four Pillars Vase. Ribbed Interior. Excellent Pastel Iridescence
- 268 Northwood Dark Marigold Four Pillars 7 1/2" Vase with Ribbed Interior.
- 269 Northwood Electric Blue Four Pillars 7 1/2" Vase.
- 270 Northwood Ice Blue Diamond Points 6 3/4" Vase. Outstanding Pastel Iridescence
- 271 Northwood Pumpkin Marigold Diamond Point Squatty 6 1/2" Vase.
- 272 Northwood Lime Green Diamond Points Squatty Vase.
- 273 Exceptional Northwood Green Feathers 6 1/2" Squatty Vase. Never Seen one this pretty
- 274 Northwood Purple Acorn Burrs Covered Butter dish and Creamer. (Sold Choice)
- 275 Northwood Electric Purple Peacock at the Fountain Butter dish.
- 276 Northwood White Peacock at the Fountain Creamer.
- 277 Northwood Ice Blue Peacock at the Fountain Covered Spooner. Really Pretty Pastel Iridescence
- 278 Beautiful Northwood Green Springtime Table Set. Super Nice
- 279 Northwood Electric Blue Stippled Grape & Cable PCE Bowl.
- 280 Fantastic Northwood Electric Purple Grape & Cable Plate. Super Flat Has Flat Flake on Bottom of Collar Base
- 281 Northwood Pumpkin Marigold Grape & Cable Plate. Ribbed Exterior
- 282 Northwood Electric Blue Stippled Grape & Cable Plate. Ribbed Exterior
- 283 Imperial Purple Hobstar Compote.
- 284 Imperial Green Hobstar Compote. Has Very Pretty Emerald Highlights
- 285 Northwood Blue Drapery Footed Candy Dish.
- 286 Northwood White Drapery Footed Candy Dish.
- 287 Northwood Purple Drapery Footed Candy Dish.
- 288 Fenton Blue Kittens 2 Sides Up Plate.
- 289 Fenton Marigold Kittens Plate with Two Sides Up.
- 290 Dugan Electric Purple Spiralex 10" Vase.
- 291 Dugan White Spiralex 10" Vase.
- 292 Brockwitz Blue Curved Star 7" Celery Vase.
- 293 Lot of Nine Vintage Carnival Glass Buttons.
- 294 Dugan Electric Purple 5" Squatty Pulled Loops Vase.
- 295 Dugan Electric Purple Target 7" Squatty Vase.
- 296 Dugan White Target 6" Squatty Vase with 4" Base.
- 297 Dugan Electric Purple 10" Target Vase.
- 298 Dugan Pumpkin Marigold Lined Lattice 9" Vase.
- 299 Dugan Electric Purple Lattice and Points 4" Hat Shape Vase.
- 300 Dugan Pumpkin Marigold Lined Lattice 5 1/2" Squatty Vase. 5 1/2" Opening
- 301 Set of Five Dugan Blue Many Fruits Punch Cups.
- 302 Pair of Beautiful Carnival Glass Tumblers (Sold Choice). Fenton Pumpkin Marigold Orange Tree Scroll and Imperial Electric Purple Imperial Grape
- 303 Singleton Bailey Black Amethyst Poppy Show Vase.
- 304 Rare Faceted Beetle Hatpin. Non-Iridized.
- 305 Blue Bee on Honeycomb Hatpin.
- 306 Scarce Black Amethyst Scarab Shell Hatpin.
- 307 Beautiful Flying Bat Hatpin.
- 308 Top of the Morning Hatpin.
- 309 Dragonflies Hatpin.
- 310 Lavender Rooster Hatpin.
- 311 Six Plums, Tufted Pillow and Triad Carnival Glass Hat Pins. (Sold Choice)
- 312 Red Eye Winker 5 1/2" Footed Whimsy Vase. Signed Robert Hansen
- 313 Signed Robert Hansen Red Wreathed Cherry Sugar.
- 314 Signed Robert Hansen Teal Violin.
- 315 Signed Robert Hansen Green Pump.
- 316 Signed Robert Hansen Sapphire Inverted Strawberry Hat.
- 317 Signed Robert Hansen Purple Elephant Head Toothpick Holder.
- 318 Signed Robert Hansen Sapphire Owl Toothpick.
- 319 Pair of Signed Robert Hansen Red Toothpicks. (Sold 2x the money)
- 320 ICGA 2003 Green Frolicking Bear Souvenir Basket.
- 321 ACGA 1983 Green Seacoast Spittoon Souvenir.
- 322 Fenton Contemporary Red Christmas Compote.
- 323 Fenton Contemporary Aqua Opal Christmas Compote.



137



136



225



54

Remmen Auction & Appraisal Service

P. O. Box 301156 • Portland, Oregon 97294-9156
Phone: (503) 256-1226 • Cell Phone: (503) 756-2629

PRSRT STD AUTO
U.S. POSTAGE
PAID
CLACKAMAS, OR
PERMIT NO. 007



131



S5 P5 717
Lee Markley
PO Box 306
Mentone IN 46539-0306



75



16



173



15



208



250



207