

**Carnival Glass Auction at the SSCGA Convention**  
**Saturday, January 30th 2010 9:30 am**  
 (Preview Friday January 29th from 7 pm to 9 pm. Doors open at 8 am Saturday)  
**Holiday Inn Cocoa Beach Oceanfront Resort**  
**1300 North Atlantic Avenue Cocoa Beach, Florida 32931**  
**1.800.206.2747 or 1.321.783.2271**

This year we have a very nice selection of glass for you from the Alton Jones collection of TX. We have also added another smaller collection to make this a very well round auction for everyone! What a great way to start off the year! A warm Florida convention and a nice auction for all! And remember this years theme is "Patriotic" whatever country you are from! Please visit [www.sscga.com](http://www.sscga.com) for more convention information. If for some reason you cannot make this auction, just give Laurie or Cierra a call and they will be happy to help you with your bids. They can be reached at 937.548.7835 or 937.459.9562 email: [office@jimwrodauction.com](mailto:office@jimwrodauction.com) , Thanks, Jim

\*\*\*\*\*Mail, E-Mail, Phone and Absentee Bids Policy:\*\*\*\*\*

We do accept absentee bids, Phone bids(\$500.00 minimum bid) and left bids. All bids will be bid competitively against the audience. **ALL** absentee bids must be to us **no later than 2 days** prior to the auction, otherwise we will not guarantee them being entered into our system. All **SUCCESSFUL** absentee, phone and left bids are subject to a \$7.00 convenience fee, plus postage and insurance. We will contact you within a couple of days after the auction. **Please do not call** us to see if you won an item. Laurie will call you if your bid was successful. Extra calls coming in just slows us down on contacting people. We are traveling for this auction so it may take until Wednesday ( 02/03) of the following week to get hold of you.

If damage is found during the auction or preview we will cancel your bid. If manufacture problems bother you such as air bubbles, pulled points, soda ash, tool marks, or any other manufacturing flaw, please be specific in your mail bids or email bids. If there is a manufacture flaw on an item that we feel is truly distracting, we have noted that in the listing already. **Auction Company has the right NOT** to execute an absentee bid for any reason. **ALL** bids are due **2 days** prior to the auction. **ALL** items must be paid for within 7 business days after notification. **PLEASE NOTE:** Laurie will get your items to you as fast as possible but, please allow 2 to 3 weeks for your items to be shipped as we may stay in Florida for a week or so. Thanks!

**To view more pictures & listing please visit our websites [www.jimwrodauction.com](http://www.jimwrodauction.com)**

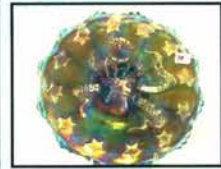
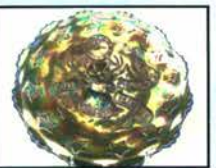
**Terms & Conditions:** Cash, Travelers checks, business or personal checks w/I.D. Visa/ MC & Discover with a 3% clerking fee

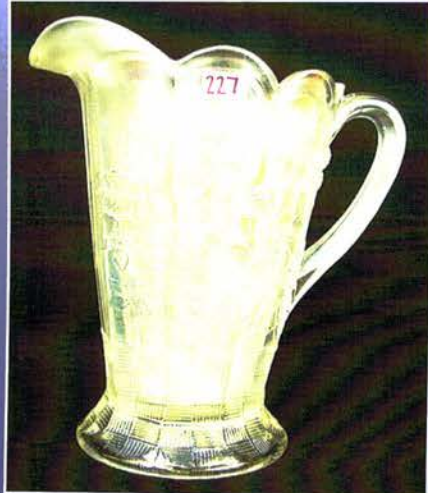
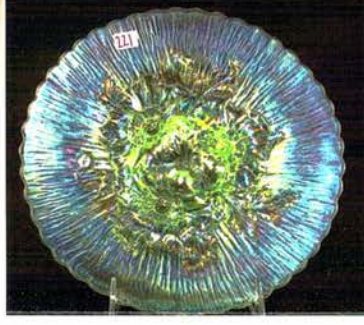
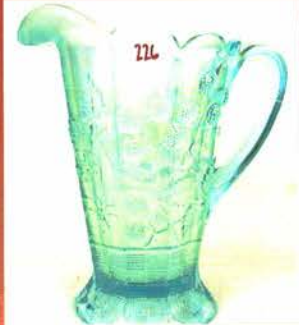


*Jim Wroda Auction Services*



**Jim Wroda AU 3132 and Mike Baker AU 3133 - Auctioneers**  
**LICENSED BY THE STATE OF FLORIDA**





**January 30, 2010 SSCGA Carnival Glass Listing**

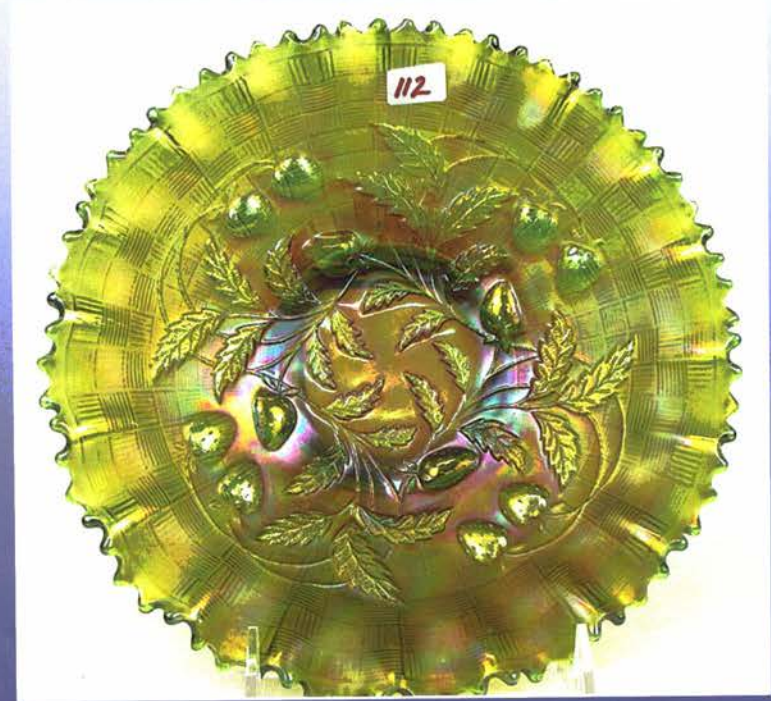
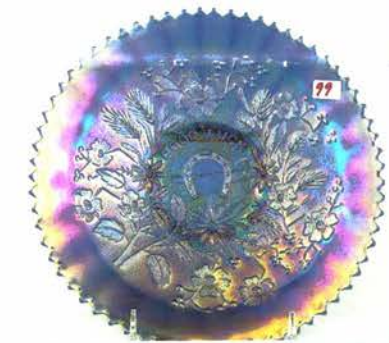
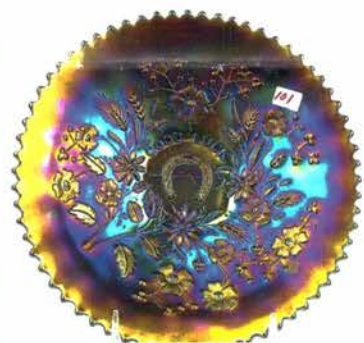
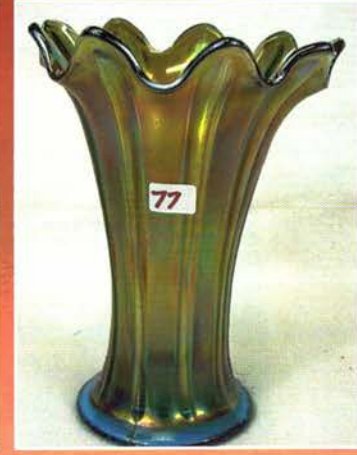
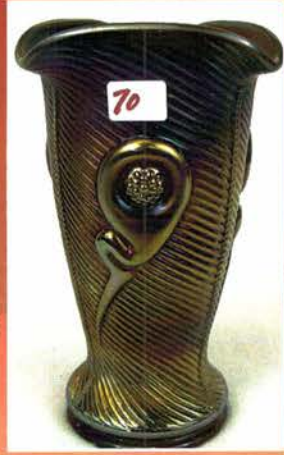
- 1 MBURG PURPLE ELKS PAPERWEIGHT. Great condition & nice color! Very rare to find a perfect one
- 2 Mburg 10" purple Many Stars ruffled bowl w/ 6 pt star
- 3 Mburg 10" purple Many Stars ruffled bowl w/5 pt star
- 4 Mburg 10" mari Many Stars 3-1 edge bowl. Nice color!
- 5 Mburg 10" purple Many Stars 3-1 edge bowl w/ 5 pt star.
- 6 Mburg 10" purple Many Stars ICS bowl w/ 5 pt star. scarce
- 7 Mburg 8" purple Big Fish 3-1 edge bowl. RARE shape
- 8 Mburg 8" Green Trout & Fly 3-1 edge bowl. NICE
- 9 Mburg 8" mari Big Fish ruffled bowl. Has great color!
- 10 Mburg 8" mari Trout & Fly DIAMOND shape bowl. Scarce
- 11 Mburg 8" purple Trout & Fly ICS bowl. Scarce & nice
- 12 Mburg 10" green Nesting Swans ruffled bowl
- 13 Mburg 8" radium purple Grape Wreath vari. ruffled bowl
- 14 Mburg 8" purple Courthouse ruffled bowl. Nice pressing
- 15 Mburg 10" green Hanging Cherries deep round bowl
- 16 Mburg 10" purple Peacock at Urn Flared round bowl. Really unusual shape. Not a berry bowl but not an ICS bowl? Has two base chips.
- 17 Mburg 10" mari Fleur de lys CRE bowl. Nice
- 18 Mburg 10" purple Hobnail Swirl vase. Very nice!
- 19 Mburg rad purple Perfection tumbler. Fantastic color!
- 20 Mburg green Seacoast pin tray. Small smoothed spot on point.
- 21 Mburg purple Seacoast pin tray. Scarce
- 22 Mburg green Sunflower pin tray.
- 23 Mburg green Peacock At Urn giant compote. Very scarce!
- 24 Mburg green Poppy compote. Radium & scarce!
- 25 Mburg purple Poppy compote.
- 26 Mburg mari Poppy compote. Radium& very sharp!
- 27 Mburg rad purple Ohio Star vase. Very scarce!
- 27a Mburg rad mari Ohio Star vase. Tremendous blue color on a nice dark marigold! One of the top Ohio Star vases out there
- 28 NWOOD ICE BLUE ORIENTAL POPPY TANKARD. Super frosty! Not many chances to buy one this nice!
- 29 Nwood white Oriental Poppy tankard. Frosty irid & scarce!
- 30 Nwood elec green Oriental Poppy tankard. Great color on a very hard-to-find tankard!
- 31 Nwood purple Oriental Poppy tankard. Teeny open bubble on base. No harm.
- 32 Nwood dark mari Oriental Poppy tankard. As dark as you will find one of these! Very nice!
- 33 NWOOD 7" ICE BLUE TREE TRUNK SQUATTY VASE. Outstanding pastel irid! A beauty!
- 34 Nwood 9" IB Three Fruits stippled plate. Extremely rare with just two or three known! This does have a heat check running around the collar base.
- 35 Nwood IB Heart & Flower compote. Very nice irid!
- 36 Nwood 8.5" IB G&C stippled PCE bowl. What a great run of ice blue!
- 37 Nwood 9" IB Heart & Flower PCE bowl. By far the best ice blue PCE bowl we've sold! Outstanding irid!
- 38 Nwood 8.5" pastel mari Heart & Flower PCE bowl. Another top Heart & Flower bowl!
- 39 Nwood 8.5" BLASTIC ELEC BLUE G&C stippled PCE bowl That's right! It is BLASTIC!
- 40 RARE PURPLE IMP IRON CROSS PAPERWEIGHT. Imperial Glass Company, Bel Air, Ohio. Signed "Nuart & Nucut". This is as mint as you'll find one of these!
- 41 IMP ELEC PURPLE SCROLL & FLOWER PANELS VASE. Blasting elec color on an extremely rare vase!
- 42 Imp elec purple Homestead chop plate. Wonderful color!
- 43 Imp elec purple Grape water carafe. SHARP!
- 44 Imp green Loganberry vase. Lg bruise in neck.
- 45 Imp 8" purple Shell & Sand ruffled bowl. Great color!
- 46 Imp mari Zipper Loop lamp. Sm.
- 47 Imp smoke Zipper Loop lamp. Med. New hardware.
- 48 IMP ELEC PURPLE CHRYSANTHEMUM CHOP PLATE. Very scarce! This is a top one!
- 49 DUGAN ELEC PURPLE CHRISTMAS COMPOTE. Super bright radium color! Always desirable!
- 50 DUGAN PURPLE ELK SPADE SHAPE NAPPY! GREAT DETAIL AND ALWAYS DESIRABLE. RARE!
- 51 Dugan mari Mary Ann 3-handled loving cup
- 52 Dugan mari Butterfly & Tulip deep round ftd bowl.
- 53 Dugan 8" purple Apple Blossom Twigs ruffled bowl. Very nice color!
- 54 Dugan purple Many Fruits punch bowl & base.
- 55 Dugan mari Many Fruits punch bowl & base. Has 5 cups.
- 56 Dugan mari Quill water pitcher & [1] tumblers.
- 57 DUGAN PURPLE BUTTERFLY & TULIP FLARED FTD BOWL. NICE W/NICE MULTICOLOR IRID!
- 57A DUGAN ELEC PURPLE FARMYARD 6 RUFFLED BOWL! VERY NICE AND ALWAYS DESIRABLE!
- 58 [6] Dugan blue Stork & Rushes tumblers. 6x\$\$
- 59 Dugan 8" mari Brooklyn Bridge 10-ruffled bowl
- 60 Dugan purple Mary Ann 2-handled vase.
- 61 Dugan black amy Fishermans mug.
- 62 Dugan 9" blue Fanciful plate. A bit silvery.
- 63 Dugan 9" blue Round Up plate. Very rare!
- 63A Nwood mari Acorn Burr 8 pc punch set. Great color.. Always a hit!
- 64 NWOOD ICE BLUE ACORN BURR 10pc PUNCH SET Very rare! Has very nice pastel irid! Not many opportunities to purchase this set!
- 65 Nwood elec purple Peacock At Fountain punch bowl & base. Very nice set!
- 66 Nwood green Corn vase. Has nice color!
- 67 Nwood IG Corn vase. Almost lime!
- 68 Nwood mari Corn vase. SCARCE COLOR
- 69 Nwood lav Tornado ribbed vase. VERY SCARCE w/ wide flared top. Very scarce variation w/the wide top
- 70 Nwood purple Tornado ribbed vase. SCARCE
- 71 Nwood green Tornado vase. Small size
- 72 Nwood mari Tornado vase. Small size
- 73 Nwood BLUE/VIOLET BLUE Tornado vase. RARE SMALL SIZE! NOT MANY AROUND.
- 74 Nwood purple Town Pump. Nice color! A tad silvery at the bottom. PERFECT!
- 75 Nwood pumpkin mari Town Pump. GREAT COLOR! Scarce!
- 76 Camb green Near Cut perfume.
- 77 Nwood SAPH 7" Thin Rib squatty vase. Very rare vase!

- 78 Fenton 7" blue 1911 Elks Atlantic City plate.
- 79 Fenton 7" blue 1914 Elks Parkersburg plate
- 80 Fenton 7" blue Illinois Soldiers & Sailors plate
- 81 Fenton 6" purple Geo W Getts Pianos plate.
- 82 Fenton 6" purple Utah Liquor adv plate
- 83 Nwood 6" purple Fern Brand Chocolates plate.
- 84 Fenton 6" lav Dreibus Parfait Sweets plate.
- 85 Fenton 6" lav Dreibus Parfait Sweets handgrip plate.
- 86 NWOOD GREEN HEART & FLOWER COMPOTE. Great color & detail! Very Rare! Multicolor irid all over
- 87 Nwood AO Heart & Flower compote.
- 88 Nwood DARK IB G/C HATPIN HOLDER. Almost saph!
- 89 Nwood purple G&C hatpin holder.
- 90 Nwood purple G&C cologne bottle.
- 91 Nwood mari G&C cologne bottle.
- 92 Nwood mari G&C candle lamp.
- 93 Nwood mari G&C candle lamp w/flared shade
- 94 Nwood 19" WHITE TREE TRUNK FUNERAL VASE! Extremely rare! Only three or four known! This one sold at the Bingham auction. Does have a small bruise on the base. Not a big deal, just mentioning it. Great color!
- 95 Nwood 18" ELEC BLUE TREE TRUNK FUNERAL VASE. Has to be the best one we've ever sold! Elec all over! WHAT A VASE!
- 96 Nwood 15" purple Tree Trunk elephant-ft funeral vase.
- 97 Nwood 9" pastel AO Three Fruits stippled plate. Loaded with opal! Very scarce! THIS IS ONE SHARP PLATE!
- 98 NWOOD 9" WHITE GOOD LUCK PLATE. Extremely rare with just a couple known! Fantastic pastel color! From the Harold Cox collection.
- 99 Nwood 9" blue Good Luck stippled plate. Scarce!
- 100 Nwood 9" green Good Luck plate. Has BW back.
- 101 Nwood 9" purple Good Luck plate. Has elec hi-lights!
- 102 Nwood 9" purple Good Luck. Has BW back.
- 103 Nwood 9" green Good Luck PCE bowl. Scarce
- 104 Nwood 9" purple Good Luck PCE bowl.
- 105 Nwood 9" mari Good Luck PCE bowl.
- 106 Nwood 8.5" AO Good Luck ruffled bowl. Super pastel color on a rare bowl!
- 107 Art Glass Aurora Pearls 10" HP bowl.
- 108 RARE! Nwood 9" GREEN Greek Key plate. Not many around!
- 109 Nwood 9" green Greek Key PCE bowl. A tough bowl!
- 110 Nwood 9" horehound Stippled Strawberry PCE bowl. Rare color! Very sharp adn desirable
- 111 Nwood 9" purple Stippled Strawberry PCE bowl.
- 112 Nwood 9" green Strawberry PCE bowl. Has BW back.
- 113 Nwood 9" green Strawberry plate. Has BW back.
- 114 Nwood 9" mari Stippled Strawberry ruffled bowl. SUPER
- 115 Nwood 9" green Strawberry plate w/PB. Flake on one pt.
- 116 NWOOD 9" ICE BLUE HEARTS & FLOWERS PLATE. Has plain back. Fantastic pastel color! Very few known with a plain back!
- 117 Nwood 9" blue Heart & Flower PCE bowl. Silvery.
- 118 Nwood 8.5" aqua Embroidered Mums bowl. Scarce!
- 119 Nwood 9" light amy Embroidered Mums ruffled bowl.
- 120 Nwood 9" elec blue Embroidered Mums ruffled bowl.
- 121 NWOOD 9" EMERALD GREEN ROSE SHOW PLATE. Beautiful multi-color irid on true emerald green! Wonderful plate! WOW!!!!
- 122 Nwood 9" blue Rose Show plate.
- 123 Nwood 9" mari Rose Show plate. Very sharp
- 124 Nwood 9" SUPER PASTEL MARI Rose Show plate.
- 125 Nwood 8" IG Rose Show bowl. Very scarce!
- 126 NWOOD 8" KILLER PASTEL AQUA OPAL ROSE SHOW BOWL. Opal clear down on roses! One of the hottest ones you'll ever see!
- 127 Nwood 10" white Peacock At Urn MIC bowl.
- 128 Nwood 8" powder blue opal Peacocks ruffled bowl.
- 129 Nwood 8" pastel AO Peacocks ruffled bowl.
- 130 Nwood 8" mari Peacocks stippled ruffled bowl.
- 131 Nwood 9" blue Peacocks PCE bowl.
- 132 Nwood 9" pastel mari Peacocks stippled plate.
- 133 Nwood 9" purple Peacocks plate. Has elec hi-lights!
- 134 Nwood 9" dark mari Peacocks plate.
- 135 Nwood 9" white Peacocks plate.
- 136 Nwood 9" elec purple Peacocks plate.
- 137 Nwood 9" mari Peacocks plate.
- 138 Nwood 7" green Tree Trunk squatty vase.
- 139 Nwood AO Daisy & Drape vase.
- 140 Nwood blue Daisy & Drape vase.
- 141 Nwood white Daisy & Drape vase.
- 142 Nwood dark mari Daisy & Drape vase. Has turned-in top.
- 143 Nwood mari Daisy & Drape vase. Has turned-in top.
- 144 Nwood elec blue Singing Birds mug.
- 145 [4] Nwood purple G&C shot glasses. Selling choice.
- 146 Nwood IB Leaf & Beads rose bowl. Scarce!
- 147 Nwood dark mari Drapery rose bowl.
- 148 Nwood blue JIP vase.
- 149 Nwood blue Wild Rose nut dish. Points up.
- 150 Nwood 9" purple G&C stippled plate.
- 151 Nwood 9" purple G&C plate. Has plain back.
- 152 [2] Nwood 9" green G&C stippled plates. Old rose distilling. Selling choice.
- 153 Nwood 10" IG Drapery vase. Toes okay.
- 154 Nwood 11" IB Tree Trunk vase.
- 155 Nwood 11" blue Tree Trunk vase.
- 156 Nwood 9" rad elec blue Three Fruits stippled plate A looker!
- 157 Nwood 9" dark mari Three Fruits stippled plate.
- 158 Nwood 8" purple Three Fruits stippled ruffled bowl
- 159 Nwood 8" AO Three Fruits stippled ruffled bowl
- 160 Nwood 10" pastel mari Wishbone chop plate.
- 161 Nwood 8" purple Wishbone ftd bowl
- 162 Nwood 8" purple Wishbone ftd ruffled bowl
- 163 Nwood 10" purple Wishbone PCE bowl
- 164 Fenton 9" green Peter Rabbit 8-ruff bowl. Small manufacture split on back edge. No big deal
- 165 Fenton 9" mari Coral plate.
- 166 Fenton 8.5" red Holly ICS bowl. Scarce

- 167 Fenton 8" dark mari Peacock At Urn 8-ruff bowl
- 168 Fenton 9" purple Ribbon Tie 3-1 edge bowl.
- 169 Fenton 9" blue Ribbon Tie 3-1 edge bowl.
- 170 FENTON 10" BLUE LITTLE DAISIES RUFFLED BOWL. Never seen a ruffled one! Great color! RARE
- 171 RARE Fenton 9" red Plaid bowl.
- 172 Fenton 5" red Panther sauce
- 173 Fenton 4" blue Kittens cereal bowl.
- 174 Fenton mari Kittens 2-sides-up plate.
- 175 Fenton blue Orange Tree ruffled punch bowl & base.
- 176 Fenton blue Orange Tree ruffled punch bowl & base. Has flared top.
- 177 Fenton 13" red Fine Rib vase.
- 178 Fenton 6" red Water Lily sauce.
- 179 Fenton 8" mari Dragon & Lotus ftd bowl. Fantastic color!
- 180 Fenton 9" blue Peacock At Urn plate. Nice color!
- 181 FENTON 9" EMERALD GREEN PEACOCK AT URN 8-RUFF BOWL Fabulous color!
- 182 Fenton 8" elec blue Peacock At Urn 6-ruff bowl.
- 183 Fenton 8" powder blue G&C ball ftd bowl.
- 184 Fenton 7" blue Horse Medallion ruffled bowl
- 185 Fenton 7" mari Horse Medallion plate. Small pulled pt.
- 186 Fenton 9" blue Holly plate.
- 187 Fenton 10" purple Rustic mid-size vase.
- 188 FENTON 8.5" ICE GREEN ORANGE TREE 8-RUFF BOWL. Extremely rare! Just a couple known! Great pastel color!
- 189 Fenton green Orange Tree ftd fruit bowl. Scarce color!
- 190 Fenton mari Butterfly & Berry water pitcher. Has one tumbler.
- 191 Fenton 10" mari Stag & Holly ftd ICS bowl.
- 192 Fenton mari Ten Mums water pitcher.
- 193 Fenton blue G&C low fruit bowl. Has PM int.
- 194 Camb green Double Star water pitcher. Has two tumblers.
- 195 Camb green Inverted Feather cracker jar.
- 196 Cont Fenton red Poppy oil lamp. 1984 In Memory of Rose Presznick.
- 197 US Glass honey amber Cosmos & Cane 7pc water set.
- 198 Nwood mari Grape Arbor 7pc water set.
- 199 Nwood blue Grape & Gothic Arches 7pc water set.
- 200 Nwood green Wishbone water pitcher.
- 201 Nwood green Wishbone tumbler.
- 202 Nwood purple G&C water pitcher.
- 203 [2] G&C purple tumblers. 1 \$\$
- 204 Fenton blue Bouquet 6pc water set.
- 205 Nwood AO Beaded Cable rose bowl.
- 206 Nwood 5" purple Peacock At Urn ICS bowl.
- 207 Euro 5" mari Western Thistle vase.
- 208 Fenton vaseline opal Bogy Bayou vase.
- 209 Fenton red Orange Tree standard mug.
- 210 Fenton green Orange Tree standard mug.
- 211 Fenton dark cherry red Orange Tree mug.
- 212 Fenton 9" elec blue Orange Tree plate. Very nice!
- 213 Dugan 6" purple Wishbone & Spades plate.
- 214 Nwood 8" lime green w/ mari overlay Grape Leaves bowl. Scarce color!
- 215 Nwood 7" purple Fruits & Flowers plate.
- 216 Nwood 9" purple Three Fruits plate. Has BW back.
- 217 Nwood 9" mari Three Fruits plate. Has BW back.
- 218 RARE Nwood saph Singing Birds mug.
- 219 VERY RARE Ice Green Dandelion Knights Templar mug. Very scarce!
- 220 Nwood green Dandelion stippled mug.
- 221 Nwood 9" IG Poppy Show plate. Tremendous blue irid!
- 222 Nwood 9" IB Poppy Show plate. Rare!
- 223 Nwood 10" BLASTING ELEC BLUE Peacock At Urn MIC. Outstanding!
- 224 Nwood 9" green Peacocks stippled PCE bowl. Very scarce! Very odd shade of green. Almost an olive.
- 225 Nwood 9" light amy Peacocks plate.
- 226 Nwood IB RASPBERRY WATER PITCHER. Very rare!
- 227 Nwood white Raspberry water pitcher. Another rare item!
- 228 Nwood 10" PERSIAN BLUE Diamond Points vase. Only one we know of. Really cool base color!
- 229 Nwood 10" IG Diamond Points vase.
- 230 Nwood 8.5" elec blue Strawberry stippled ruffled bowl. Super color on a scarce bowl
- 231 Nwood white Heart & Flower compote.
- 232 Nwood 8" pastel mari Good Luck stippled bowl.
- 233 Nwood 8.5" saph Three Fruits stippled bowl. Great color!
- 234 Nwood 8.5" pastel mari Embroidered Mums bowl.
- 235 Nwood 8.5" light amy/lav Embroidered Mums ruffled bowl. Very nice!
- 236 Nwood mari G&C sweet meat. Very tough!
- 237 Fenton 8" cherry red Stag & Holly ftd bowl.
- 238 Fenton 6" red slag Acorn round bowl. Scarce!
- 239 Fenton 6" red Stippled Rays round bowl.
- 240 Fenton red Holly JIP hat.
- 241 EXTREMELY RARE FENTON MARI WATER LILY SPITTOON. This spittoon is made from a berry bowl. Extremely rare! Only one we know of!
- 242 Fenton white Blueberry water pitcher. Very scarce!
- 243 Fenton blue Strawberry Scroll water pitcher. Scarce!
- 244 [2] Fenton blue Strawberry Scroll tumblers. 2x\$\$
- 245 Fenton 8" celeste blue Three Row OE 2-sides-up hat Very nice!
- 246 Fenton 9" purple Holly plate. Scarce!
- 247 Fenton 9" blue Leaf Chain plate. Has nice elec hi-lights!
- 248 NWOOD 9" AQUA NIPPON PCE BOWL. Very rare! Has great pastel color!
- 249 Nwood G&C Goofus Treatment bowl.
- 250 Nwood white Raspberry tumbler.
- 251 RARE Nwood IG G&C stippled ruffled bowl. Couple chips on the point
- 252 Nwood mari Wide Panel epergne. Scarce!
- 253 Imp elec purple Flute 7pc water set.
- 254 Imp elec purple Octagon jelly compote. RARE!
- 255 Imp elec purple Hobstar & Flower compote.
- 256 Imp elec purple Windmill milk pitcher. Scarce

- 257 RARE Imp elec purple Lustre Rose fruit bowl. Outstanding color!
- 258 US Glass mari Cosmos & Cane rose bowl. Has headdress int.
- 259 6" Mari Rose Garden vase. Has a couple of flakes on edge.
- 260 Australian 10" mari Swan ruffled bowl. Scarce!
- 261 Dugan 8" celeste blue Double Stem Rose bowl. Scarce!
- 262 Art Glass PO brides bowl & frame.
- 263 Fenton blue Starflower water pitcher. Scarce!
- 264 Fenton mari Starflower water pitcher.
- 265 EXTREMELY RARE IMP 8" BLUE FLUTE (COLONIAL) VASE. Just a few known! Great elec color! Teeny flea bite on one point.
- 266 Imp 6" green Ripple vase.
- 267 Imp 7" amber Ripple vase.
- 268 Imp 7" elec purple Ripple vase.
- 269 Imp 11" elec purple Ripple mid-size vase.
- 270 Imp 9" mari Flute (Colonial) vase.
- 271 Imp 8" elec purple Beaded Bullseye vase. Has flared top.
- 272 Imp 6" elec purple Morning Glory vase.
- 273 IMP MARI 5" FILE ROCOCO-STYLE WHIMSY VASE. Made from a sugar bowl. Super rare! Nice color!
- 274 RARE Dugan 9" amy opal Pulled Loops vase. Only one we've seen!
- 275 Dugan 12" purple Pulled Loops vase. Great color!
- 276 EXTREMELY RARE FENTON 12" AMY OPAL APRIL SHOWERS VASE. Has CRE.
- 277 European 4" mari Cambridge vase. Super rare size!
- 278 European 12" pastel mari Diamond Cut vase. Made by Inwald. Outstanding! Brilliant blue irid!
- 279 Brockwitz mari Moon Print Morning Glory vase.
- 280 European 8" mari vase. Pattern??
- 281 European 18" mari vase. Pattern ??
- 282 Nwood 13" purple Thin Rib mid-size vase.
- 283 US Glass? 12" white vase. Pattern unknown, but really cool! Does have some chipping on the base.
- 284 Nwood elec green Good Luck ruffled bowl. Some may call this emerald! Either way, it's gorgeous!
- 285 Nwood 9" IG Fruits & Flowers ruffled bowl. Beautiful pastel irid!
- 286 Nwood 8.5" lime green Three Fruits stippled spat ftd bowl. Extremely hard to find! Nice color!
- 287 Nwood 8.5" elec purple Three Fruits stippled PCE bowl. Outstanding blue & yellow irid with a slight mauve overlay! Super attractive!
- 288 Nwood 9" elec purple Strawberry plate. Has plain back. Super hot yellow irid! Wowzer!
- 289 Nwood 9" elec yellow mari Strawberry plate. Has plain back. A perfect match to lot #288!
- 290 Nwood 9" elec mari Strawberry ruffled bowl. Has plain back. Outstanding yellow & blue irid! This is a "just-buy-it" bowl!
- 291 Fenton 8" dark pumpkin mari Peacock At Urn 6-ruff bowl. Hot!
- 292 Fenton mari Mikado compote. Super bright pink & blue irid! Another keeper!
- 293 Fenton 9" elec pastel mari Cherry Chain ICS bowl. You're gonna love this one!
- 294 Nwood green Daisy & Plume ftd rose bowl. Small chip at the end of one toe.
- 295 Nwood pastel mari Raspberry milk pitcher. Super!
- 296 Nwood elec green Raspberry water pitcher. Another beauty!
- 297 Nwood 10" elec green Tree Trunk vase.
- 298 Nwood purple G&C fern. Super color! Always a hit!
- 299 Dugan mari Formal hatpin holder. Scarce!
- 300 Imp 12" amber Beaded Bullseye vase. Scarce!
- 301 Celeste blue Concave Diamond 8pc water set. Scarce! Nice stretch irid!
- 302 RARE Fenton 10" Water Lily & Cattails ftd chop plate. Extremely rare! Does have an open bubble on the bottom of one foot. This is not damage. Super color!
- 303 NWOOD AQUA OPAL G&C PUNCH CUP. Very hard to find!
- 304 EXTREMELY RARE FENTON 8.5" RED CHRYSANTHEMUM RUFFLED BOWL. Fantastic color on one of the toughest pieces of red you'll find! Has just a tinge of yellow in the base, but we are calling it red.
- 305 Nwood 11" AO Diamond Points vase. Has flashy irid!
- 306 Mari Inverted Fan & Feather tumbler. (Old)
- 307 Blue God & Home tumbler.
- 308 Elec lav Diamond Lace tumbler. Rare!
- 309 Bright mari Circle Scroll tumbler. Outstanding irid!
- 310 White Palm Beach tumbler.
- 311 Elec purple Fashion tumbler. Outstanding!
- 312 Elec purple Tiger Lily tumbler. Bright yellow irid!
- 313 Elec purple Chatelaine tumbler. Blasting elec irid!
- 314 PUMPKIN mari Quill tumbler. Super color! BEAUTIFUL
- 315 White Oriental Poppy tumbler. Very frosty!
- 316 Nwood 9" green G&C stippled plate. Very nice color!
- 317 Fenton 7" celeste blue Three Row OE square hat. Very rare shape!
- 318 Dugan PO Fishnet 2pc epergne.
- 319 Imp 8" elec purple Grape ruffled bowl. Super!
- 320 Imp 8" elec purple Heavy Grape plate.
- 321 Imp 8" elec purple Heavy Grape plate.
- 322 Imp elec purple Grape wine decanter. Stopper may be cont.
- 323 Fenton 11" aqua Fine Rib vase.
- 324 Imp 8" elec purple Scroll Embossed round bowl.
- 325 Dugan pumpkin mari Wreath Cherry spooner.
- 326 SUPER FENTON 21" PURPLE RUSTIC FUNERAL VASE W/PLUNGER BASE. FANTASTIC COLOR AND VERY DESIRABLE!
- 327 card of 19 Carnival Glass buttons
- 328 card of 19 Carnival Glass buttons
- 329 card of 32 Carnival Glass buttons
- 330 card of 14 Carnival Glass buttons
- 331 card of 14 Carnival Glass buttons
- 332 card of 14 Carnival Glass buttons

**Thanks for participating in todays auction! Our next Carnival Glass Auction will be February 12th and 13th 2010 in Greenville. Over 800 pieces from the Forest McGuire Collection. Please see website for pictures listing and start times.**



*Jim Wroda Auction Services, LLC*  
5239 ST RT 49S  
Greenville, OH 45331  
office@jimwrodaauction.com  
937-548-7835

PRESORTED  
FIRST CLASS MAIL  
U.S. POSTAGE  
**PAID**  
CELINA, OH  
PERMIT NO. 99

**\*\*\*FIRST CLASS POSTAGE\*\*\***

LEE MARKLEY  
PO BOX 306  
502 N BROADWAY ST  
MENTONE IN 46539-9531



*Carnival Glass Auction at the SSCGA Convention*  
*Saturday, January 30th 2010 9:30 am*

*Volume 2, Series 2010*

