

Carnival Glass Auction

Saturday, November 14th, 2009 - 9:30 AM

Senior Activity Center

326 4th St NE • Mason City, Iowa



44



27



77 10 349



429

JIM & JAN SEECK

Seeck Auctions

641-424-1116

Carnival Glass Auction – 9:30 AM

Preview: Friday, November 13th, 3 pm – 6 pm

Senior Activity Center – Mason City, Iowa

326 4th St NE



(From South: Take US Hwy 65 into Mason City and turn right or East on 4th ST NE, go 2 blocks)

(From North: Take US Hwy 65 into Mason City and turn left or East on 4th ST NE, go 4 blocks)

(This building is next to the Charlie Brown Daycare play yard)

NO BUYER'S PREMIUM

Seeck Auctions is pleased to be selling the Carnival Glass collection of Lura Dean and Charles Hildebrand from Texas. The collection consists of a wide variety of very nice quality items. Hope to see many of you in Mason City. Christmas is just around the corner, so give Carnival Glass for Christmas!

**For Lots of Color Pictures Check our WEBSITE:
www.seeckauktion.com**

** Please email us and we can put you on our Internet mailing list for auction updates and notices. (Please indicate Carnival Glass)*

Lodging: Mason City: Comfort Inn – (641)423-4444; Country Inn & Suites – (641)423-1770; Super 8 – (641)423-8855; Holiday Inn – (641)423-1640; Clear Lake: AmericInn – (641)357-8954; Best Western Holiday Lodge (641)357-5253.

Terms: Cash or Check, VISA and MasterCard accepted w/proper ID. 4% Clerking Fee on all purchases except for payment of cash or check. Announcements made day of sale take precedence over any printed information.

Jim and Jan Seeck
641-424-1116

Seeck Auctions

EMAIL:
jimjan@seeckauktion.com

ABSENTEE BID POLICY

1. Write-in bids will be accepted by sending the numbers of the item(s) desired and the amount bid on each to:
Seeck Auctions, PO Box 377, Mason City, Iowa 50402.
2. You may call in your bids previous to the auction at (641)424-1116. (this is not live phone bidding)
3. You may email your bids to us: jimjan@seeckauktion.com Include the numbers of the item(s) you would like to bid on and amount bid on each, please include your telephone number.
4. Live phone bidding is available. Bidding must start on item at \$500. Please call for details.
5. There is a **\$7 handling charge** for each successful bid. Shipping and insurance charges are additional.
6. Bidders will be notified by phone/email if their bid(s) are successful. This will be done 1 - 3 days after the auction.
7. Please have all bids in by **Thurs., Nov. 12th**. All bids (by mail, phone or **email**) after this date may not be carried out.
8. Please place bids in the following increments: \$1 to \$300 - \$5 increments \$300 up - \$25 increments.
9. **If you do not receive an item that sold for less than your bid, assume we cancelled your bid because the piece of glass had below average color, manufacture problem, damage or was not listed correctly.**
10. Auction results are posted on our website within 2 weeks of the auction.

- ___ 1. Florentine 10" candlesticks - ice green
- ___ 2. Florentine 10" candlesticks - marigold
- ___ 3. Florentine 8 1/2" candlesticks - russet
- ___ **4. Double Scroll candlesticks - teal**
- ___ 5. Double Scroll single candlestick - smoke
- ___ 6. N's Trumpet candlesticks - amethyst
- ___ 7. Premium candlesticks - smoke
- ___ 8. Premium candlesticks - marigold
- ___ 9. Fenton's #649 candlesticks - marigold
- ___ **10. Holly CRE JIP hatshape - red - fantastic red irid., super!!**
- ___ 11. Holly CRE JIP hatshape - amberina - polished base
- ___ **12. Paneled Dandelion 7 pc. tankard water set - green - scarce set, nice**
- ___ **13. Paneled Dandelion 5 pc. tankard water set - blue - scarce, nice**
- ___ 14. Ski Star lg size 8 ruffled bowl - peach opal
- ___ 15. Iris ruffled compotes (2) - green - choice
- ___ 16. Iris ruffled compote - amethyst
- ___ 17. Iris ruffled compote - marigold
- ___ **18. Peacocks 9" plate w/ribbed back - purple - super pretty, scarce**
- ___ 19. Oval Star & Fan rose bowl w/flower frog - marigold
- ___ 20. Octagon large size water pitcher - marigold
- ___ 21. Octagon tumblers w/collar base (3) - marigold - choice
- ___ 22. Octagon small size 5 pc. water set - marigold
- ___ 23. Honeycomb & Beads banana boat shaped dish - peach opal
- ___ **24. Town Pump - purple - super pretty, a classic**
- ___ 25. Town pump - green - extremely rare color, new spout
- ___ 26. Starfish ruffled compote - peach opal
- ___ **27. Peach 7 pc. water set - blue - very scarce, nice**
- ___ 28. Six Petal crimped edge ruffled bowl - peach opal
- ___ 29. Grape & Gothic Arches 4 pc. table set - marigold - nice set
- ___ 30. Grape & Gothic Arches butter dish, creamer & spooner - blue - butter dish has minor pinpoint, choice
- ___ 31. Ripple 9" vase, has 2 3/8" base - purple - pretty
- ___ **32. M'burg Diamonds water pitcher - green - scarce**
- ___ 33. M'burg Diamonds tumblers (2) - green - choice
- ___ **34. Embroidered Mums ruffled bowl - blue - scarce, nice**
- ___ 35. Petal & Fan 7 pc. ruffled berry set - peach opal
- ___ 36. Four Flowers 6" plate - peach opal
- ___ 37. Floral & Grape 7 pc. water set - amethyst
- ___ 38. Floral & Grape 7 pc. water set - blue - nice
- ___ 39. Floral & Grape 7 pc. water set - marigold - pretty
- ___ 40. Parlor Panels 4 1/2" squatty vase - smoke - scarce
- ___ **41. Orange Tree 4 pc. table set - marigold - minor polishing on foot of creamer**
- ___ 42. Butterfly & Berry spooner - amethyst - scarce color, couple of nicks on claws
- ___ 43. Fine Rib 12" vases (2) - amethyst - choice
- ___ **44. Fenton's Peacock at Urn 9" plate - blue - fabulous!**
- ___ 45. Grape Delight rose bowl - blue
- ___ 46. Raspberry water pitcher - green - scarce
- ___ 47. Raspberry tumblers (3) - green - choice
- ___ 48. Raspberry 7 pc. water set - purple - nice
- ___ 49. Raspberry 6 pc. water set - marigold - also nice
- ___ 50. Mary Ann vases (2) - amethyst - choice
- ___ 51. Mary Ann vase - marigold
- ___ **52. Grape & Cable master IC bowl - green - super pretty**
- ___ **53. Grape & Cable master IC bowl - white - scarce, nice**
- ___ 54. Iris buttermilk goblet - green
- ___ 55. Iris buttermilk goblet - amethyst
- ___ 56. Four Seventy Four 6 pc. large size water set - marigold
- ___ 57. Four Seventy Four middle size water pitcher - marigold
- ___ 58. Four Seventy Four milk pitcher - marigold
- ___ 59. Four Seventy Four milk pitcher - green
- ___ 60. Beaded Cable rose bowl - aqua opal - nice
- ___ 61. Beaded Cable rose bowl - green
- ___ **62. Springtime 4 pc. table set - green**
- ___ 63. Springtime creamer, spooner & butter dish - marigold - choice
- ___ 64. Springtime creamer, spooner & butter dish - amethyst - choice
- ___ 65. Garden Path Variant ruffled bowl - white - scarce, nice
- ___ 66. Raindrops dome ftd ruffled bowl - peach opal
- ___ **67. Enameled Forget Me Not tankard water pitcher - amethyst - scarce & nice**
- ___ 68. Two Flowers lg size ftd ruffled bowl - marigold
- ___ **69. Hearts & Flowers ruffled compote - blue - nice**
- ___ 70. Hearts & Flowers ruffled compote - white
- ___ 71. Holly 3 in 1 edge ruffled bowl - blue
- ___ **72. Butterfly & Fern 5 pc. water set - blue - scarce**
- ___ **73. Butterfly & Fern water pitcher - amethyst**
- ___ 74. Butterfly & Fern tumbler - amethyst
- ___ 75. Thistle banana boat - blue - nice
- ___ 76. Wreath of Roses rose bowl - marigold
- ___ **77. Coin Dot ruffled bowl - red - rare & highly desirable, very nice, looks red!**
- ___ 78. Coin Dot IC shaped bowl - green
- ___ 79. Grape & Cable tobacco humidior - purple - nice, couple minor nicks on top rim of base
- ___ **80. Grape & Cable cracker jar - purple - nice**
- ___ **81. Grape & Cable cvd compote - purple - pretty**
- ___ 82. Scroll Embossed small ruffled compotes (2) - green - choice
- ___ 83. Scroll Embossed small size ruffled compote - marigold
- ___ **84. Poppy Show 9" plate - ice blue - super pretty irid. on this very scarce plate**
- ___ 85. Lined Lattice 9" vase - marigold
- ___ 86. Dahlia 5 pc. berry set - white - scarce set
- ___ 87. Panther ftd ruffled sauce - aqua - scarce
- ___ 88. Panther ftd ruffled sauces (3) - marigold - choice
- ___ 89. Orange Tree loving cup - white - very scarce color, damage by hdl, same damage if seen on several, this must be a factory thing

- ___ 90. Orange Tree loving cup - green - green - scarce color, pretty
- ___ 91. Orange Tree loving cup - blue - fantastic irid.!
- ___ 92. Orange Tree Loving cup - marigold - dark, nice
- ___ 93. Question Mark ftd bonbon - amethyst
- ___ 94. Acorn Burrs water pitcher - green - scarce color, nice
- ___ 95. Acorn Burrs tumblers (3) - green - choice
- ___ 96. Inverted Feather cracker jar - green - lid has slight repair
- ___ 97. Strawberry 9" plate w/BW back - amethyst
- ___ 98. Strawberry 9" plate w/plain back - green
- ___ 99. Grape & Cable sweetmeat - purple
- ___ 100. Folding Fan crimped edge ruffled compote - peach opal
- ___ 101. N's Peacock at Urn master IC bowl - purple - scarce, nice
- ___ 102. N's Peacock at Urn IC sauces (6) - purple - choice
- ___ 103. N's Peacock at Urn master IC bowl - marigold - nice
- ___ 104. N's Peacock at Urn IC sauces (6) - marigold - choice
- ___ 105. Butterfly bonbon w/plain back - purple
- ___ 106. Fenton's #649 pair of candlesticks - white - scarce
- ___ 107. N's Grape Leaves ruffled bowl - purple
- ___ 108. Broken Arches 12 pc. ruffled top punch set - marigold - hard to find
- ___ 109. Luster Rose fernery - clambroth
- ___ 110. Luster Rose fernery - marigold
- ___ 111. N's Dandelion 7 pc. tankard water set - purple - scarce & desirable
- ___ 112. Rococco vase - marigold
- ___ 113. Wreathed Cherry master berry bowl - purple
- ___ 114. Ten Mums lg ruffled bowl - blue - very pretty
- ___ 115. Butterfly & Berry 4 pc. table set - marigold
- ___ 116. M'burg Strawberry 10" ruffled bowl - amethyst - radium & super, chips on backside of ruffle
- ___ 117. Lg ftd shells (2) - amethyst - choice
- ___ 118. Grape & Cable water pitcher - green - scarce color
- ___ 119. Grape & Cable tumbler - green
- ___ 120. Grape & Cable 6 pc. water set - purple - nice set
- ___ 121. Grape & Cable water pitcher - marigold - nice
- ___ 122. Cosmos 10" ruffled bowl - amethyst
- ___ 123. Persian Medallion hldd bonbon - red - scarce & desirable
- ___ 124. Persian Medallion hldd bonbon - marigold
- ___ 125. Diamond Point Swirl water pitcher - light marigold - have not seen this pitcher before
- ___ 126. Stippled Peacocks 9" plate w/ribbed back - marigold - a dandy
- ___ 127. Butterflies bonbon - amethyst
- ___ 128. Butterflies bonbon - green
- ___ 129. Grape & Cable banana boat - ice green - very scarce color & nice
- ___ 130. Banded Grape & Cable banana boat - blue - super pretty electric highlights, scarce!
- ___ 131. Grape & Cable banana boat - green - scarce color
- ___ 132. Stippled & Banded Grape & Cable banana boat - marigold - scarce, nice
- ___ 133. Wreath of Roses ruffled compote - green
- ___ 134. Maple Leaf 4 pc. table set - blue - very scarce set, sugar lid is missing
- ___ 135. Maple Leaf 4 pc. table set - purple - sugar lid is missing
- ___ 136. M'burg Rosalind 10" 3 in 1 edge bowl - green - satin, nice
- ___ 137. Diamond Column 13" vase - green
- ___ 138. Diamond & Column 11" vase - amethyst
- ___ 139. Diamond & Column 9" vase - marigold
- ___ 140. Jeweled Heart w/Rayed interior 7 pc. berry set - peach opal
- ___ 141. Field Flower water pitcher - smoke - super pretty example, scarce color
- ___ 142. Field Flower water pitcher - green
- ___ 143. Field Flower tumbler - green
- ___ 144. Field Flower 7 pc. water set - marigold - nice
- ___ 145. Leaf Rays nappy - peach opal
- ___ 146. Grape & Cable turned in centerpiece bowl - purple - scarce
- ___ 147. Pepper Plant square shaped hat - marigold
- ___ 148. N's Bushel Basket - smoke - scarce color
- ___ 149. N's Bushel Basket - lavender - scarce
- ___ 150. N's Bushel Basket - aqua opal - always desirable
- ___ 151. N's Bushel Basket - blue
- ___ 152. N's Bushel Basket - marigold
- ___ 153. Octagon water goblets (16) - marigold - choice
- ___ 154. Raspberry milk pitcher - green - nice
- ___ 155. Shriners champagnes including: New Orleans 1910; Louisville 1909; Rochester 1911; St. Paul 1908 - choice
- ___ 156. Diamond Lace water pitcher - purple - super pretty
- ___ 157. Diamond Lace tumbler - purple
- ___ 158. Grape & Cable 11" ruffled 7 pc. berry set - amethyst
- ___ 159. Mary Ann 3 hldd loving cup - marigold - very scarce & nice
- ___ 160. Dugan Cherries ftd ruffled bowl - amethyst
- ___ 161. M'burg Rosalind 10" ruffled bowl - green - satin
- ___ 162. M'burg Rosalind 10" ruffled bowl - amethyst - satin, nice
- ___ 163. Birds & Cherries bonbon - green
- ___ 164. Rising Sun 5 pc. water set - marigold - scarce
- ___ 165. Dragon & Lotus ruffled bowl - blue
- ___ 166. Dragon & Lotus ruffled bowl - marigold - very pretty
- ___ 167. Dandelion mug - blue
- ___ 168. Four Seventy Four 14 pc. punch set - marigold
- ___ 169. Ribbon Tie 3 in 1 edge bowl - blue
- ___ 170. Butterfly & Berry 7 pc. water set - blue - scarce, nice
- ___ 171. Butterfly & Berry 7 pc. water set - marigold
- ___ 172. Tree Trunk 10" vase - purple - nice
- ___ 173. Imperial Grape ruffled compote - marigold
- ___ 174. Peacocks PCE bowl w/ribbed back - green - super pretty, a real beauty
- ___ 175. Butterflies bonbon - marigold
- ___ 176. Daisy Wreath ruffled bowl - blue opal - very nice

- ___ 177. Dugan Trumpet pair of large candlesticks - ice green - nice
 ___ 178. Imperial Grape wine bottle w/stopper - purple - repaired bottom to stopper
 ___ 179. Imperial Grape ruffled bowl - marigold
 ___ 180. Holly ruffled bowl - blue
 ___ 181. Holly ruffled bowl - marigold
 ___ 182. **Stork & Rushes 5 pc. water set - blue - nice**
 ___ 183. Grapevine Lattice 6" plate - marigold
 ___ 184. Soutache CRE dome ftd plate - peach opal
 ___ 185. Louisa rose bowl - green
 ___ 186. **Mikado ruffled compote - lavender - super pretty irid., almost looks opal on edge, nice piece, rare!**
 ___ 187. Acorn Burrs table set creamer - purple
 ___ 188. Ftd Prism Panels vase - marigold
 ___ 189. **Blossomtime ruffled compote - purple - nice**
 ___ 190. Windmill round bowl - marigold
 ___ 191. **N's Grape & Cable lg size ruffled orange bowl - purple - scarce**
 ___ 192. Butterfly & Berry 8 1/2" vase - blue
 ___ 193. Butterfly & Berry 8" vase - marigold
 ___ 194. **Oriental Poppy 7 pc. tankard water set - purple - nice set**
 ___ 195. Fan gravy boat - peach opal
 ___ 196. M'burg Sunflower pin tray - green - nice, nick on back of leaf
 ___ 197. Fine Cut & Roses rose bowls (2) - purple - choice
 ___ 198. Imperial Grape water carafe - purple - nice
 ___ 199. **Fenton #249 Portly pair of candlesticks - wisteria - scarce set, nice**
 ___ 200. **Cherry & Cable 7 pc. water set - marigold - very rare & desirable set**
 ___ 201. Thistle CRE bowl - amethyst
 ___ 202. Thistle CRE bowl - marigold
 ___ 203. **Stippled Rays 7" ruffled bowl - red slag - nice**
 ___ 204. Stippled Rays 7" ruffled bowl - aqua
 ___ 205. Grape & Cable 9" plate w/BW back - green - super flat & super pretty
 ___ 206. Octagon hdd celery vase - marigold - nice
 ___ 207. Two Flowers lg size ftd ruffled bowl - green - scarce color
 ___ 208. Ftd Fine Rib JIP vase - marigold
 ___ 209. Windmill 7 pc. water set - marigold - nice set
 ___ 210. Luster Rose 10" ruffled bowl - smoke - pretty
 ___ 211. Luster Rose ruffled sauce - smoke - nice
 ___ 212. Octagon 7 pc. wine set - marigold - nice
 ___ 213. Persian Medallion card tray shaped bonbon - green
 ___ 214. Horse Medallion 7" plate - marigold - nice
 ___ 215. **Fenton's Grape & Cable fruit bowl w/plain interior - green - nice**
 ___ 216. **Fenton's Grape & Cable fruit bowl w/Persian Medallion interior - blue - super pretty**
 ___ 217. Octagon cvd sugar, spoon & butter dish top - marigold - choice
 ___ 218. **Wishbone PCE bowl w/BW back - green - nice - almost turned under on edge**
 ___ 219. Vintage fernery - blue
 ___ 220. Vintage fernery - marigold
 ___ 221. Crabclaw 7 pc. water set - marigold
 ___ 222. Captive Rose IC shaped bowl - green - nice
 ___ 223. Luster Rose ftd fruit bowl - marigold
 ___ 224. Wide Panel ruffled bowl - smoke
 ___ 225. **Hearts & Flowers ruffled bowl w/ribbed back - ice blue - desirable**
 ___ 226. M'burg Blackberry Wreath 8" ruffled bowl - marigold - radium
 ___ 227. N's Thin Rib 12" mid-size vase - green
 ___ 228. Peach & Pear banana boat master berry bowl - marigold
 ___ 229. Grape & Cable spt ftd 9" plate - green
 ___ 230. Knotted Beads crimped edge 8 1/2" vase - marigold
 ___ 231. Enameled Daisy & Little Flowers 5 pc. water set - blue - nice
 ___ 232. Pony 6 ruffled bowl - marigold
 ___ 233. Stag & Holly lg size ftd ruffled bowl - blue - repaired chip on base
 ___ 234. Imperial Colonial pair of candlesticks - marigold
 ___ 235. **M'burg Peacock 6" plate - satin & pretty, nice plate**
 ___ 236. Hen on Nest - marigold
 ___ 237. Swirl milk pitcher - marigold
 ___ 238. **Orange Tree powder jar - white - very scarce, minor nick on lid**
 ___ 239. Imperial Grape 5 pc. wine set - marigold
 ___ 240. Butterfly & Berry ftd master berry bowl - blue - nice
 ___ 241. **Chesterfield single candlestick - amberina**
 ___ 242. Robin 6 pc. water set - marigold
 ___ 243. M'burg Blackberry Wreath 7" ruffled bowl - amethyst - satin
 ___ 244. Leaf Chain 9" plate - white
 ___ 245. Maple Leaf master berry bowl & 1 berry sauce - marigold
 ___ 246. Three Fruits 9" plate w/plain back - purple
 ___ 247. Acorn Burrs 9 pc. punch set - purple - 5 repaired flames on bowl, super pretty
 ___ 248. Fantail ftd round bowl - marigold
 ___ 249. Peacock & Grape ruffled bowl - amethyst - pretty
 ___ 250. Grape & Cable candlesticks - green
 ___ 251. Dahlia spooner - white
 ___ 252. Waterlily ftd ruffled sauce - marigold
 ___ 253. **Holly ruffled hatshape - red - nice**
 ___ 254. Holly ruffled hatshape - vaseline w/marigold overlay
 ___ 255. Orange Tree hatpin holder - blue - nice
 ___ 256. Open Rose 9" plate - marigold
 ___ 257. **Imperial Grape water pitcher - purple - mold roughness on base, super!**
 ___ 258. Imperial Grape tumbler - purple
 ___ 259. Imperial Grape 6 pc. water set - marigold
 ___ 260. Fenton's Fine Rib 9 1/2" vase - red - chip on base
 ___ 261. **Stippled Grape & Cable Variant Old Rose Distillery 9" plate w/ribbed back - green - scarce**
 ___ 262. Stream of Hearts ruffled compote - marigold - base has been slightly polished
 ___ 263. Three Fruits ruffled bowl w/plain back - purple
 ___ 264. Persian Garden 6" plate - marigold
 ___ 265. Windmill milk pitcher - aqua - scarce

- ___ 266. Windmill milk pitchers (2) - marigold - choice
- ___ 267. Windmill 5" deep round sauce - purple
- ___ 268. Fenton's Grape & Cable 7" ruffled bowl - marigold
- ___ **269. Fashion round compote - smoke - very rare piece & nice**
- ___ 270. Imperial #9 small ftd ruffled bowl - smoke
- ___ 271. Top of the Morning & Beads hatpins - purple - choice
- ___ 272. Misc. flash glass pcs. (4) - light marigold - choice
- ___ 273. Lotus & Grape IC shaped bowl - blue - pretty
- ___ 274. Leaf Swirl compote - amber
- ___ 275. Heavy Grape 8" plate - purple - pretty
- ___ 276. Daisy & Plume ftd rose bowl - green - has rayed interior
- ___ 277. Dugan Cherries 10" ruffled bowl - peach opal
- ___ 278. Basketweave Open Edge lg size JIP hat - marigold
- ___ **279. Peacock at the Fountain water pitcher - blue - scarce, nice**
- ___ 280. Peacock at the Fountain tumblers (3) - blue - choice
- ___ 281. Star & File celery vase, pickle dish, spooner & wine - marigold - choice
- ___ 282. Grape & Cable creamer, spooner & butter dish top - emerald green - fantastic! choice
- ___ **283. Grape & Cable 4 pc. table set - purple - nice**
- ___ 284. Thin Rib 9" JIP vase - marigold
- ___ 285. Coin Dot 9" 3 in 1 edge bowl - green
- ___ 286. Pipe novelty & Gun candy container - light marigold - choice
- ___ 287. Grape & Cable hatpin holder - purple
- ___ 288. Grape & Cable hatpin holder - marigold
- ___ 289. Luster Rose 7" ftd deep round bowl - marigold
- ___ 290. Lattice & Grape 7pc. water set - marigold
- ___ 291. Imperial Swirl vases (2) - smoke - choice
- ___ 292. Imperial Swirl vase - marigold
- ___ 293. Singing Birds mug - purple
- ___ 294. Mikado round compote - marigold - pretty, nick on base
- ___ 295. Miniature Morning Glory 5" vase - smoke
- ___ 296. Ftd 7" vase, similar to the Massachusetts vase - flash marigold
- ___ **297. Leaf Chain 7" ruffled bowl - red - scarce**
- ___ 298. Leaf Chain 7" ruffled bowl - marigold
- ___ 299. N's Eight Sided bushel basket - purple - nice
- ___ 300. N's Eight Sided bushel basket - white
- ___ 301. Waffle Block hldd basket - clambroth
- ___ 302. Fenton's Peacock at Urn 6 ruffled bowl - white
- ___ 303. Lattice & Daisy 8" vase - purple
- ___ 304. Waterlily master ftd berry bowl - marigold
- ___ 305. Dragon & Lotus 3 in 1 edge ruffled bowl - green - nice
- ___ 306. Spirilex 10" vase - peach opal
- ___ **307. Singing Birds 7pc. water set - green - very pretty set & highly desirable**
- ___ **308. Singing Birds 6 pc. water set - marigold - nice**
- ___ 309. Scotch Thistle crimped edge ruffled compote - green
- ___ 310. Heavy Grape chop plate - marigold
- ___ 311. Grape & Cable PCE bowl w/BW back - green
- ___ 312. Imperial Wide Panel shades (5) - marigold - choice
- ___ 313. Grape & Cable master berry bowl - purple
- ___ 314. Star Medallion pcs. including hldd bonbon, 6" plate, tumbler, 8" bowl, ruffled compote - marigold - choice
- ___ 315. Leaf & Beads rose bowl w/plain interior - purple
- ___ 316. Leaf & Beads rose bowl w/Sunflower interior - marigold
- ___ **317. Blackberry Spray ruffled hat w/2 sets of Blackberries - red - scarce, nice**
- ___ 318. Blackberry Spray ruffled hat - blue
- ___ 319. Egyptian Luster pair of candlesticks - red - scarce color
- ___ 320. Lea cream & sugar - marigold
- ___ 321. Hattie ruffled bowl - purple - nice
- ___ 322. Peacock Tail 9" IC shaped bowl - marigold
- ___ 323. Heart & Vine 3 in 1 edge bowl - amethyst
- ___ 324. Persian Medallion 6" plate - marigold
- ___ 325. Nautilus whimsey creamer - purple
- ___ 326. Fenton's Flowers rose bowl - blue
- ___ 327. Fenton's Flowers rose bowl - marigold - nice on toe
- ___ 328. Basketweave Open Edge ruffled hat - lime green
- ___ 329. Table set pcs including: Singing Birds butter dish top; Carnival Hobstar butter dish top & spooner; Beaded Shell creamer - marigold - choice
- ___ 330. Beaded Shell mug - blue
- ___ **331. M'burg Trout & Fly 3 in 1 edge bowl - marigold - satin, pretty**
- ___ 332. Vineyard water pitcher - marigold
- ___ **333. Holly 9" plate - blue - pretty**
- ___ 334. Blackberry Bramble ruffled compote - marigold
- ___ **335. Daisy & Drape turned in vase - purple - scarce, nice**
- ___ 336. Daisy & Drape turned in vase - white - nice
- ___ 337. Poinsettia milk pitcher - marigold
- ___ 338. Good Luck ruffled bowl w/BW back - purple - super pretty
- ___ 339. Vintage 7" ruffled bowl - amethyst
- ___ 340. Peacock at the Fountain butter dish, creamer & spooner - marigold - base of butter dish has chip, choice
- ___ 341. M'burg Holly Whirl ruffled bowl - green - satin
- ___ 342. Tiger Lily 7 pc. water set - marigold
- ___ **343. Basketweave Open Edge IC shaped bowl - ice green - scarce**
- ___ 344. Fanciful IC shaped bowl - marigold - radium type irid.
- ___ 345. April Showers 11" vase - blue
- ___ **346. Butterfly & Tulip 2 sides up ftd bowl - marigold - scarce**
- ___ 347. Fruits & Flowers 7" ruffled bowl - purple - pretty
- ___ 348. Luster Rose breakfast creamer & sugar - marigold
- ___ **349. Fenton's Flute 10" vase - red - cherry red color & rare**
- ___ 350. Fenton's Grape & Cable spt ftd IC shaped bowl - green
- ___ 351. Floral & Grape water pitcher - marigold
- ___ 352. Floral & Grape tumblers (3) - marigold - choice
- ___ 353. M'burg Rays & Ribbons ruffled bowl - green - satin
- ___ 354. Flute car vases (2) - marigold - choice
- ___ 355. Grape & Cable sweetmeat whimsey - purple

- ___ 356. **Greek Key ruffled bowl w/ribbed back - marigold - nice**
 ___ 357. Florentine 9" single candlestick - ice green
 ___ 358. **M'burg Hanging Cherries water pitcher - amethyst - rare pitcher, satin & nice**
 ___ 359. Double Stemmed Rose dome ftd bowl - marigold
 ___ 360. **Cherry Circle card tray shaped bonbon - powder blue - odd color plus nice**
 ___ 361. Compote vase - amber
 ___ 362. Butterfly Berry butter dish, spoon & cvd sugar - blue - choice
 ___ 363. Butterfly & Berry creamer & spooner - marigold - choice
 ___ 364. Fern ruffled compote - green
 ___ 365. Windflower ruffled bowl - marigold
 ___ 366. **Scroll Embossed 9" plate - purple - super**
 ___ 367. Leaf Tier lampshade - marigold on milkglass
 ___ 368. Enameled Cherry & Little Flowers 7 pc. water set - blue - nice
 ___ 369. Two Fruits divided bonbon - marigold
 ___ 370. Peacock & Grape 3 in 1 edge bowl - amethyst -
 ___ 371. Iris buttermilk goblet - marigold
 ___ 372. **Peacocks 9" plate w/ribbed back - purple - scarce**
 ___ 373. **Peacocks 9" plate w/ribbed back - ice green - scarce**
 ___ 374. **Peacocks 9" plate w/ribbed back - white - very pretty & scarce**
 ___ 375. Star Medallion milk pitcher - marigold
 ___ 376. Star Medallion milk pitcher - clambroth
 ___ 377. Drapery rose bowl - aqua opal - very nice opal & pretty
 ___ 378. Hobstar Band flat water pitcher - marigold
 ___ 379. Hobstar Band tumbler - marigold
 ___ 380. Windflower hldd nappy - marigold
 ___ 381. Three Fruits 9" plate w/BW back - green
 ___ 382. Imperial Grape hldd sandwich tray - smoke
 ___ 383. Imperial Grape hldd sandwich tray - marigold
 ___ 384. **Cobblestone ruffled bowl - purple - pretty**
 ___ 385. Woodpecker wall pocket - marigold
 ___ 386. Feathered Serpent 10" ruffled bowl - amethyst
 ___ 387. Maple Leaf water pitcher - purple
 ___ 388. Maple Leaf tumblers (2) - purple - choice
 ___ 389. Imperial Grape round bowl - helios green
 ___ 390. Grape & Cable butter dish - purple
 ___ 391. Banks including: Liberty Bell, Owl & 4 pigs - marigold - choice
 ___ 392. **Good Luck PCE bowl w/ribbed back - blue**
 ___ 393. Persian Garden IC shaped sauce - white
 ___ 394. Captive Rose CRE bowl - amethyst
 ___ 395. Orange Tree shaving mug - black amethyst - scarce
 ___ 396. **N's Corn vase w/stalk base - white**
 ___ 397. Basketweave Open Edge JIP hat - blue
 ___ 398. Apple Blossom Twigs ruffled bowl w/smooth edge - peach opal - pretty
 ___ 399. N's Thin Rib 6" squatty vase - green
 ___ 400. Rambling Rose 7" water set - blue - scarce
 ___ 401. Wreath of Roses tri-cornered candy dish - marigold
 ___ 402. Vintage 7" IC shaped bowl - green
 ___ 403. N's #657 pair of candlesticks - russet
 ___ 404. Star & File water pitcher - marigold
 ___ 405. Star & File tumbler - marigold
 ___ 406. Peacock Tail ruffled hat - blue
 ___ 407. **Twist Bobeche pair of candlesticks - white - very scarce set**
 ___ 408. Diamond Ring ruffled bowl - smoke
 ___ 409. Flowering Dill crimped edge, square shaped hat - marigold
 ___ 410. Double Loop chalice or sugar bowl - aqua opal - very nice
 ___ 411. N's Rays compote - green
 ___ 412. **Orange Tree & Scroll tankard water pitcher - blue - super, super!**
 ___ 413. Orange Tree & Scroll tumbler - blue
 ___ 414. Imperial #700 single candlestick - marigold
 ___ 415. Wild Rose open edge bowl - green
 ___ 416. Carnival Hobstar cvd cracker jar - marigold
 ___ 417. Puzzle round bonbon - blue
 ___ 418. Windmill pickle dish - marigold
 ___ 419. Pansy pickle dish - green
 ___ 420. Pineapple creamer - amethyst
 ___ 421. M'burg Blackberry Wreath ruffled sauce - marigold
 ___ 422. **E.A. Hudson Furniture Co. advertising ruffled bowl - amethyst - super nice, very rare**
 ___ 423. Pineapple ruffled bowl - marigold
 ___ 424. Raspberry gravy boat - purple
 ___ 425. Apple Blossom Twigs 9" plate - blue - scarce
 ___ 426. Louisa rose bowl - amethyst
 ___ 427. Basketweave Open Edge 2 sides up basket - green - scarce color
 ___ 428. N's Thin Rib 10" vase - amethyst
 ___ 429. **Fashion water pitcher - purple - super pretty, very rare, a beauty!**
 ___ 430. **Fashion water pitcher - smoke - very pretty!**
 ___ 431. **Fashion tumbler - smoke**
 ___ 432. **Fashion 7 pc. water set - marigold**
 ___ 433. Blue tumblers including: Floral & Grape (3); Dugan Peacock at the Fountain (4); Peach; Enameled Cherries (2); Enameled Forget-Me-Not - choice
 ___ 434. Butterfly & Fern tumblers (6) - green - choice
 ___ 435. Purple tumblers including: Grape & Cable; Plain Band; Singing Birds; Heavy Iris; Floral & Grape; Dandelion (4) - choice
 ___ 436. Marigold tumblers including: Unshod (3); Singing Birds; Vineyard (2); Beaded Shell (2); Blackberry Block (2); Butterfly & Berry; Lattice & Grape; Waterlily; Grape Arbor; Butterfly & Fern; Fluffy Peacock; Acorn Burrs; Springtime; Ftd Orange Tree; Lattice & Daisy; Orange Tree & Scroll; Enameled Flower - choice
 ___ 437. Misc. damaged pcs. (9) - choice
 ___ 438. Misc. pcs. - choice
 ___ 439. Misc. stretch glass pcs. - choice
 ___ 440. Misc. contemporary pcs. - choice
 ___ 441. Misc. depression Era Carnival Glass - choice



422

Seeck Auctions

P.O. Box 377
Mason City, Iowa 50402

PRESORTED
FIRST CLASS MAIL
U.S. POSTAGE
PAID
MAIL EXPEDITORS

Carnival Glass Auction

Saturday, November 14th, 2009

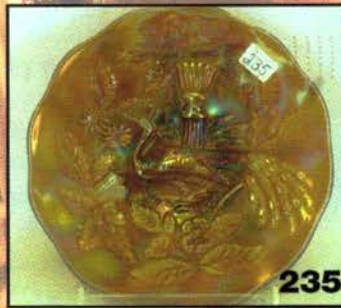
9:30 AM

Senior Activity Center

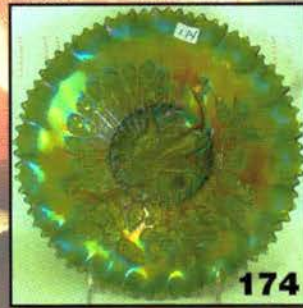
T4 P1 238
Lee Markley
PO Box 306
Mentone IN 46539-0306



52



235



174



62



94



111 412 67



186



141 269 430



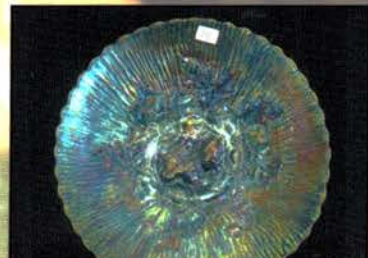
4 407



129



126



84