

Carnival Glass Auction

Saturday, September 26th, 2009 - 9:30 AM

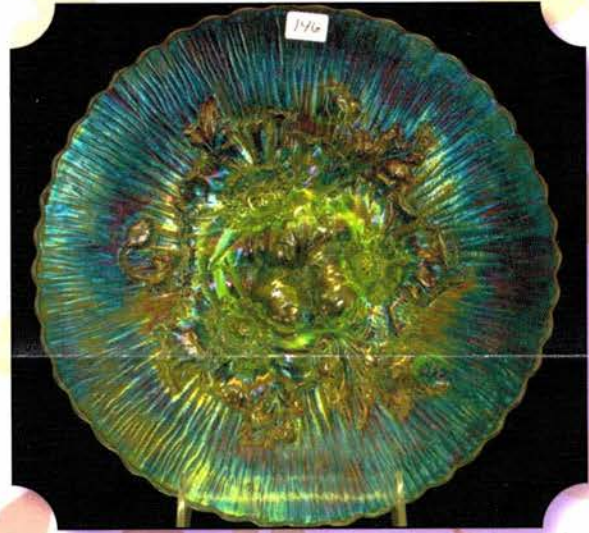
The Late Ruth Moore Collection - Part II

Senior Activity Center

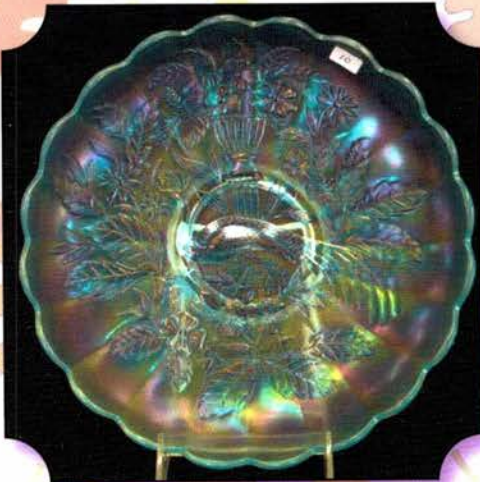
326 4th St NE • Mason City, Iowa



60



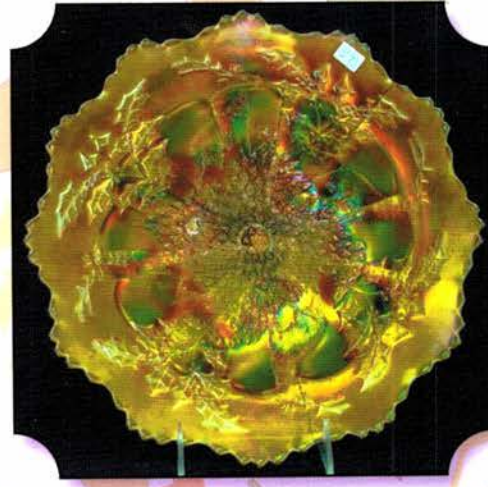
146



10



298



57

JIM & JAN SEECK

Seeck Auctions

641-424-1116

Carnival Glass Auction – 9:30 AM

Preview: Friday, September 25th, 3 pm – 6 pm

Senior Activity Center – Mason City, Iowa

326 4th St NE



(From South: Take US Hwy 65 into Mason City and turn right or East on 4th ST NE, go 2 blocks)

(From North: Take US Hwy 65 into Mason City and turn left or East on 4th ST NE, go 4 blocks)

(This building is next to the Charlie Brown Daycare play yard)

NO BUYER'S PREMIUM

Seeck Auctions is pleased to be selling the remainder of the Late Ruth Moore's collection of Carnival Glass. Ruth was a long time collector from California and had a very large collection. The first group was sold at ICGA and the remainder will sell here in Mason City. There is a very nice selection of glass with overall excellent iridescence. Hope to see you there!

**For Lots of Color Pictures Check our WEBSITE:
www.seeckauction.com**

** Please email us and we can put you on our Internet mailing list for auction updates and notices. (Please indicate Carnival Glass)*

Lodging: Mason City: Comfort Inn – (641)423-4444; Country Inn & Suites – (641)423-1770; Super 8 – (641)423-8855; Holiday Inn – (641)423-1640; Clear Lake: AmericInn – (641)357-8954; Best Western Holiday Lodge (641)357-5253.

Terms: Cash or Check, VISA and MasterCard accepted w/proper ID. **4% Clerking Fee** on all purchases except for payment of cash or check. Announcements made day of sale take precedence over any printed information.

Jim and Jan Seeck
641-424-1116

Seeck Auctions

EMAIL:
jimjan@seeckauction.com

ABSENTEE BID POLICY

1. Write-in bids will be accepted by sending the numbers of the item(s) desired and the amount bid on each to: **Seeck Auctions, PO Box 377, Mason City, Iowa 50402.**
2. You may call in your bids previous to the auction at (641)424-1116. (this is not live phone bidding)
3. You may email your bids to us: jimjan@seeckauction.com Include the numbers of the item(s) you would like to bid on and amount bid on each, please include your telephone number.
4. Live phone bidding is available. Bidding must start on item at \$500. Please call for details.
5. There is a **\$7 handling charge** for each successful bid. Shipping and insurance charges are additional.
6. Bidders will be notified by phone/email if their bid(s) are successful. This will be done 1 - 3 days after the auction.
7. Please have all bids in by **Thurs., Sept 24th**. All bids (by mail, phone or email) after this date may not be carried out.
8. Please place bids in the following increments: \$1 to \$300 - \$5 increments \$300 up - \$25 increments.
9. **If you do not receive an item that sold for less than your bid, assume we cancelled your bid because the piece of glass had below average color, manufacture problem, damage or was not listed correctly.**
10. Auction results are posted on our website within 2 weeks of the auction.

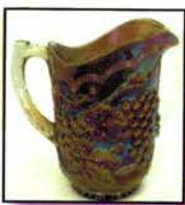
- ___ 1. Pansy handled nappies (2) - marigold - choice
- ___ 2. Milady cvd powder jar - marigold - nicks on rim under lid
- ___ 3. Miniature Morning Glory 8 1/2" vase - marigold
- ___ 4. Embossed Scroll 9" ruffled bowl w/File back - marigold
- ___ 5. Paneled Diamond & Bows 7" vases (2) - amethyst - choice
- ___ 6. Paneled Diamond & Bows 7" vase - blue
- ___ 7. Daisy & Plume stemmed rose bowl - amethyst
- ___ 8. Daisy & Plume stemmed rose bowl - marigold
- ___ 9. Kokomo ftd rose bowl - marigold
- ___ 10. N's Peacock at Urn master IC bowl - ice blue - super example, scarce
- ___ 11. N's Peacock at Urn master IC bowl - ice green - very scarce, nice
- ___ 12. Asters stemmed 6" compote - marigold - flat like a cake plate
- ___ 13. Embroidered Mums ruffled bowl w/ribbed back - lavender - fantastic, one point didn't fill in
- ___ 14. Embroidered Mums ruffled bowl w/ribbed back - blue - scarce
- ___ 15. Dragon & Lotus ruffled bowls (2) - amethyst - choice
- ___ 16. Dragon & Lotus ruffled bowl - blue - fantastic radium irid.
- ___ 17. Dragon & Lotus ruffled bowl - marigold
- ___ 18. Stippled Good Luck PCE bowl w/ribbed back - blue - scarce, has electric highlights
- ___ 19. Stippled Good Luck PCE bowl w/ribbed back - marigold - lots of pink
- ___ 20. Fenton's Thin Rib 17" vase - blue
- ___ 21. Memphis 8 pc. fruit bowl set - marigold - scarce, nice
- ___ 22. Star & File 8 pc. wine set with Octagon stopper - marigold
- ___ 23. Stippled Grape & Cable 10" ruffled bowl w/BW back - amethyst - scarce & nice
- ___ 24. Stippled Grape & Cable 10" ruffled bowl w/BW back - marigold - also scarce & nice
- ___ 25. Caroline JIP CRE bowl - peach opal
- ___ 26. Imperial Grape 6 pc. water set - purple - very scarce, nice
- ___ 27. Imperial Grape water pitcher - smoke - super pretty, scarce
- ___ 28. Imperial Grape water pitcher - green - nice
- ___ 29. Orange Tree standard size mug - marigold - pretty
- ___ 30. Greek Key ruffled bowl w/BW back - purple - pretty
- ___ 31. Greek Key ruffled bowl w/BW back - green
- ___ 32. Greek Key ruffled bowl w/ribbed back - marigold - very pretty
- ___ 33. Fashion 9 pc. ruffled punch set - marigold - nice
- ___ 34. Peacocks PCE bowl w/ribbed back - lime green - fantastic irid. on this rare bowl, minor pinpoint between points
- ___ 35. Peacocks PCE bowl w/ribbed back - emerald green - absolutely beautiful piece, two points chipped off
- ___ 36. Peacocks PCE bowl w/ribbed back - purple - pretty, pinpoint between points
- ___ 37. Peacocks PCE bowl w/ribbed back - marigold - super pretty
- ___ 38. Cut Flowers vase - marigold
- ___ 39. Stippled Grape & Cable humidior - blue - very rare color, desirable piece
- ___ 40. Grape & Cable cracker jar - purple - chips on top of base edge
- ___ 41. Banded Grape & Cable dresser tray - purple - scarce & pretty
- ___ 42. Grape & Cable pin tray - purple
- ___ 43. Grape & Cable cologne bottles (2) - purple - choice
- ___ 44. Grape & Cable perfume bottle - purple - super pretty
- ___ 45. Grape & Cable hatpin holder - purple - large chip on foot
- ___ 46. Grape & Cable powder jar - purple - chip on lid
- ___ 47. Fenton's Peacock at Urn 9" plate - blue - pretty
- ___ 48. Fenton's Peacock at Urn 9" plate - marigold - very pretty w/lots of pink irid.
- ___ 49. Plume Panels 11" vase - green
- ___ 50. Three Fruits 9" plate w/BW back - green - pretty
- ___ 51. Three Fruits 9" plate w/BW back - purple
- ___ 52. Three Fruits 9" plate w/BW back - marigold
- ___ 53. N's Eight Sided bushel basket - green - cracked
- ___ 54. N's Eight Sided bushel basket - blue
- ___ 55. N's Eight Sided bushel basket - white
- ___ 56. Target 6 1/2" squatty vase - white - large chip on base
- ___ 57. Stag & Holly chop plate - marigold - dark & nice, scarce
- ___ 58. Diamond Sunburst wine bottle & 2 wines - purple - stopper is new

- ___ 59. Diamond & Sunburst wine bottle & wine - marigold - stopper is Imperial Grape
- ___ 60. **Broken Arches 8 pc. punch set - purple - super pretty, extremely rare & highly desirable**
- ___ 61. Stretch Glass compote & under plate w/ wheel carved flowers - marigold
- ___ 62. **Orange Tree 9" plate - blue - super pretty**
- ___ 63. **Orange Tree 9" plate - marigold - pretty**
- ___ 64. Chatelaine tumblers (2) - purple - choice
- ___ 65. Heavy Grape chop plates (2) - amber - choice
- ___ 66. Heavy Grape chop plate - green
- ___ 67. Heavy Grape chop plate - marigold
- ___ 68. **Victorian ruffled bowl - purple - scarce & nice, chip on edge**
- ___ 69. Grape & Cable bonbon - blue - large chip by handle
- ___ 70. Grape & Cable bonbon - marigold - dark, nice
- ___ 71. Grape & Cable bonbon - marigold - pastel, nice
- ___ 72. Memphis master berry bowl - purple - nice
- ___ 73. Memphis 5 pc. berry set - marigold - nice
- ___ 74. Memphis master berry bowl - pastel marigold
- ___ 75. **Peacock at the Fountain water pitcher - ice blue - super pretty, minor nick on base**
- ___ 76. Lotus & Grape round 7" ftd bowl - powder blue
- ___ 77. Enameled Stippled Petal dome ftd round bowl - peach opal - has daisy decoration
- ___ 78. Flowers & Frames dome ftd deep 3 in 1 edge bowl - peach opal - nice
- ___ 79. Bells & Beads ruffled sauce - peach opal
- ___ 80. Dogwood Spray dome ftd, tri-cornered, crimped edge bowl - peach opal
- ___ 81. Four Flowers 10" ruffled bowl - peach opal
- ___ 82. Raindrops dome ftd ruffled bowl - peach opal
- ___ 83. Dugan Cherries 10" ruffled bowl - peach opal
- ___ 84. Vintage fernery - blue
- ___ 85. **Holly 9" plate - blue**
- ___ 86. Holly 9" plate - marigold - pretty
- ___ 87. Holly 9" plate - white - nice
- ___ 88. **Grape & Cable water pitcher - smoke - very rare pitcher & nice, a dandy!**
- ___ 89. **Grape & Cable water pitcher - purple - nice**
- ___ 90. Grape & Cable tumblers (3) - purple - choice
- ___ 91. Stag & Holly 10" IC shaped ftd bowl - marigold - super pretty
- ___ 92. Grape & Cable variant 9" plate w/ plain back - purple - pretty
- ___ 93. Peacock & Grape 3 in 1 edge bowl - amethyst - nice
- ___ 94. **Good Luck PCE bowl w/ribbed back - blue - super pretty, electric highlights**
- ___ 95. **Good Luck PCE bowl w/ribbed back - purple - super**
- ___ 96. **Good Luck PCE bowl w/ribbed back - marigold - dark, super**
- ___ 97. Good Luck PCE bowl w/ribbed back - pastel marigold - lots of yellow
- ___ 98. Grape & Cable 6" double handgrip plate - purple
- ___ 99. Grape & Cable small size punch bowl & base - purple - one point on bowl broken & glued
- ___ 100. Grape & Cable small size punch & base - marigold - one point polished
- ___ 101. Four Flowers 11" chop plate - purple - very scarce plate
- ___ 102. Holly IC shaped bowl - green - pretty
- ___ 103. Holly IC shaped bowls (2) - blue - choice
- ___ 104. Ftd Orange Tree water pitcher - white - very rare pitcher, feet have chips
- ___ 105. Ftd Orange Tree 5 pc. water set - blue - spout has been polished, feet have damage
- ___ 106. **Vintage 9" ruffled bowl - aqua opal - very rare, large burst in base**
- ___ 107. Heavy Grape 8" plate - purple - pretty
- ___ 108. **Memphis punch bowl & base - marigold - super pretty**
- ___ 109. N's Stippled Rays 9" ruffled bowl - purple - pretty
- ___ 110. **Peacocks ruffled bowl w/ribbed back - super pretty, minor nick on point**
- ___ 111. **Peacocks ruffled bowl w/ribbed back - aqua opal - butterscotch & pretty, nick on point**
- ___ 112. **Peacocks ruffled bowl w/ribbed back - ice blue - very scarce color**
- ___ 113. **Peacocks ruffled bowl w/ribbed back - purple - minor nick between two points**
- ___ 114. Grape & Cable Variant PCE bowl w/ plain back - lavender - pretty
- ___ 115. **Rose Show 9" plate - blue - scarce & desirable, minor nick on rose**
- ___ 116. **Rose Show 9" plate - marigold - scarce, nice**
- ___ 117. Signed Hawks 9" irid. stretch, wheel carved plate - white
- ___ 118. **Apple Blossom Twigs IC shaped bowl - lavender - super**
- ___ 119. Pineapple & Fan wine bottle & under tray - marigold - sold as set

- ___ 120. Three Fruits PCE bowl w/BW back - green
- ___ 121. Three Fruits PCE bowl w/BW back - marigold
- ___ 122. Three Fruits PCE bowl w/plain back - purple - pretty
- ___ 123. M'burg Marilyn water pitcher - purple - scarce, nice
- ___ 124. M'burg Marilyn water pitcher - marigold - pretty,
dark satin irid.
- ___ 125. Grape & Cable cvd sugar bowl - purple
- ___ 126. Wishbone 10" PCE bowl w/BW back - smoke - very
rare bowl & pretty
- ___ 127. Four Flowers ruffled bowl - light olive green - pretty
- ___ 128. Four Flowers ruffled bowl - green
- ___ 129. Grape & Cable 8" 2 sides up - plate - purple
- ___ 130. Apple Blossom Twigs 9" smooth edge plate - peach
opal - scarce
- ___ 131. Triands celery vase - marigold
- ___ 132. Stippled Strawberry PCE bowl w/ribbed back -
marigold - scarce
- ___ 133. M'burg Hobstar & Feather 16 pc. punch set -
marigold - bowl is cracked
- ___ 134. Grape & Cable Variant PCE bowl w/ribbed back -
blue - electric, two points missing
- ___ 135. Stippled Grape & Cable PCE bowl w/ribbed back -
ice blue - very rare & desirable
- ___ 136. Stippled Grape & Cable Variant PCE bowl
w/ribbed back - marigold
- ___ 137. Grape & Cable cologne bottle - green
- ___ 138. Grape & Cable cologne bottle - purple
- ___ 139. Twins 5" ruffled bowl - smoke
- ___ 140. Imperial Grape wine bottle & stopper - smoke -
scarce
- ___ 141. Imperial Grape wine - smoke
- ___ 142. Imperial Grape wine bottle & stopper - purple
- ___ 143. Imperial Grape wine - purple
- ___ 144. Imperial Grape wine bottle & stopper - marigold
- ___ 145. Imperial Grape wine - marigold
- ___ 146. Poppy Show 9" plate - ice green - super rare & very
pretty plate, minor nick on edge
- ___ 147. Hobstar Flower ruffled compote - marigold
- ___ 148. Stippled Three Fruits 9" plate w/ribbed back - blue
- scarce, nice
- ___ 149. Stippled Three Fruits 9" plate w/ribbed back - pur-
ple - scarce
- ___ 150. Octagon wine bottle, stopper & 2 wines - marigold
- ___ 151. Persian Medallion 9" ruffled bowl - red - very rare
bowl, small nick on edge
- ___ 152. Fashion water pitcher - marigold
- ___ 153. Fashion tumbler - marigold
- ___ 154. Stippled Good Luck ruffled bowl w/ribbed back -
marigold - super pretty
- ___ 155. Stippled Good Luck ruffled bowl w/ribbed back -
pastel marigold - super
- ___ 156. Paneled Dandelion tankard water pitcher - amethyst
- scarce, crack
- ___ 157. Paneled Dandelion tumblers (2) - amethyst - choice
- ___ 158. Grape & Cable Variant PCE bowl w/plain back, has
enameled decoration & "Ollie Christmas 1910"
etching - purple - pretty
- ___ 159. Daisy & Plume ftd rose bowl - smoke - very rare
rose bowl & nice
- ___ 160. Drapery 7" vase - marigold
- ___ 161. Holly crimped edge JIP hat - red - nice
- ___ 162. Zipper Stitch wines (3) - marigold - choice
- ___ 163. Strawberry 9" plate w/BW back - green
- ___ 164. Strawberry 9" plate w/plain back - purple - super
- ___ 165. Strawberry 9" plate w/plain back - marigold
- ___ 166. Cvd Jar - marigold - has a tulip looking flower
around the bottom that looks to be on fire, unusual
- ___ 167. Good Luck ruffled bowl w/BW back - horehound -
super pretty
- ___ 168. Good Luck ruffled bowl w/BW back - green - a real
beauty, almost emerald
- ___ 169. Good Luck ruffled bowl w/BW back - marigold
- ___ 170. Octagon small size water pitcher - marigold
- ___ 171. Octagon tumblers w/flat bottom (2) - marigold -
choice
- ___ 172. Estate mug w/"Souvenir Hiawatha, Kan." - marigold
- ___ 173. Stippled Rays 10" square shaped bowl - white - un-
usual
- ___ 174. Grape & Cable 10" ruffled bowl w/BW back - green -
chip on point
- ___ 175. Curved Star creamer - blue
- ___ 176. Curved Star creamer - marigold
- ___ 177. Fanciful ruffled bowl - peach opal
- ___ 178. Ski Star tri-cornered crimped edge sauce - peach opal
- ___ 179. Flowers & Frames dome ftd, tri-cornered, crimped
edge bowl - peach opal
- ___ 180. Double Stemmed Rose dome ftd ruffled bowl - peach
opal
- ___ 181. Enameled Stippled Flower 8" ruffled bowl - peach
opal - nice

- ___ 182. Estate sugar - peach opal - "Souvenir, Mapleton, Minn"
- ___ 183. Six Petal crimped edge ruffled bowl - peach opal
- ___ 184. **Greek Key 9" plate w/BW back - green - scarce**
- ___ 185. **Greek Key 9" plate w/BW back - marigold - pretty, scarce**
- ___ 186. Grape & Cable Variant PCE bowl w/BW back - purple
- ___ 187. Grape & Cable 11" ruffled bowl - blue - electric & super, chip on point
- ___ 188. N's Stippled Rays PCE bowl w/plain back - purple
- ___ 189. Four Flowers Variant 9" plate - green
- ___ 190. Four Flowers Variant 9" plate - olive green
- ___ 191. Australian Butterfly & Christmas bells ruffled compote - amethyst
- ___ 192. **Singing Birds 5 pc. water set - green - nice**
- ___ 193. Oval Star & Fan ftd rose bowl - marigold
- ___ 194. **M'burg Peacock at Urn master IC bowl - green - satin & nice**
- ___ 195. Sunflower spt ftd ruffled bowl - marigold
- ___ 196. **Stippled Peacocks ruffled bowl w/ribbed back - marigold - dark, super**
- ___ 197. Grape & Cable candlestick - marigold
- ___ 198. **Daisy & Drape flared out vase - blue - scarce**
- ___ 199. Pansy ruffled bowl - purple - electric blue irid.
- ___ 200. **Grape & Cable turned in centerpiece bowl - purple - nice**
- ___ 201. Pastel Swan salt - peach opal - scarce
- ___ 202. Pastel Swan salt - purple
- ___ 203. Pastel Swan salts (2) - ice green - choice
- ___ 204. Pastel Swan salts (2) - pink - choice
- ___ 205. Cambridge Swan salt - marigold - signed
- ___ 206. **M'burg Hobstar & Feather w/frosted feathers punch bowl & base w/2 cups - crystal - not carnival**
- ___ 207. **Stippled Grape & Cable Variant 9" plate w/ribbed back - blue - very scarce, highly desirable**
- ___ 208. **Stippled Grape & Cable Variant 9" plate w/ribbed back - green - scarce, desirable**
- ___ 209. Grape & Cable sweetmeat - purple
- ___ 210. Grape & Cable spt ftd 9" plate - marigold
- ___ 211. Imperial Grape water goblet - purple
- ___ 212. **Wishbone & Spades 6" plate - purple**
- ___ 213. Egyptian Queen 6" vase - marigold
- ___ 214. Classic Arts powder jar base - marigold
- ___ 215. **Hearts & Flowers PCE bowl w/ribbed back - purple - scarce, nice**
- ___ 216. Grape & Cable ball ftd deep round bowl - blue
- ___ 217. **M'burg Trout & Fly ruffled bowl - marigold - satin, scarce**
- ___ 218. Kittens 4 sides up dish - aqua - scarce color
- ___ 219. Kittens ruffled sauce - marigold
- ___ 220. **Rose Show ruffled bowl - ice green - scarce, pretty, minor nick on rose**
- ___ 221. Heavy Grape 7" round bowl - purple - super
- ___ 222. **Good Luck ruffled bowl w/ribbed back - lavender - super irid., beautiful**
- ___ 223. **Good Luck ruffled bowl w/ribbed back - amethyst**
- ___ 224. **Good Luck ruffled bowl w/ribbed back - blue - electric, super**
- ___ 225. **Good Luck ruffled bowl w/ribbed back - purple - one point missing**
- ___ 226. Pony ruffled bowl - marigold
- ___ 227. **Memphis 8 pc. fruit bowl set - marigold - scarce, nice**
- ___ 228. Various hatpins - choice
- ___ 229. Orange Tree loving cup - amethyst - rare color, nick on bottom of one handle
- ___ 230. Thistle & Thorn ftd ruffled bowl - marigold
- ___ 231. **Good Luck 9" plate w/BW back - purple - super pretty**
- ___ 232. **Good Luck 9" plate w/BW back - green**
- ___ 233. Dugan Thin Panel 8" vase - purple - has multi-color swirl effect on outside of vase
- ___ 234. Apple Blossom Twigs ruffled bowl w/smooth edge - peach opal - nice
- ___ 235. **Diamond Lace water pitcher - purple - pretty**
- ___ 236. Curved Star butter dish - marigold
- ___ 237. M'burg Seacoast pin tray - amethyst - very scarce, chip on edge
- ___ 238. Estate vase - smoke
- ___ 239. Estate powder jar - smoke
- ___ 240. Raspberry water pitcher - green - damage on base
- ___ 241. Raspberry tumblers (2) - green - choice
- ___ 242. Raspberry water pitcher - purple - nice
- ___ 243. Raspberry water pitcher - marigold
- ___ 244. Fanciful ruffled bowl - purple - pretty
- ___ 245. Fenton's Grape & Cable 7" ruffled bowl - marigold
- ___ 246. Tree Trunk 12 1/2" mid-size vase - green - large chip on base
- ___ 247. Three Fruits 9" plate w/plain back - purple - pretty
- ___ 248. Three Fruits 9" plate w/plain back - marigold

- ___ 249. Grape & Cable 10" PCE salad bowl - purple - scarce shape
- ___ 250. Four Flowers chop plate - peach opal - scarce, nice
- ___ 251. Grape & Cable berry sauces (2) - purple - choice
- ___ **252. Stippled Grape & Cable Variant ruffled bowl w/ribbed back - blue - minor nicks between points, hard to get**
- ___ 253. Holly 3 in 1 edge bowl - blue
- ___ 254. Persian Garden master IC bowl - white
- ___ 255. Leaf Columns 11" vase - lime green - damage in base
- ___ **256. Orange Tree 8 pc. punch set - white - very rare & highly desirable, great set!**
- ___ 257. Kittens ruffled bowl - marigold
- ___ 258. Four Flowers round bowl - green - odd shape
- ___ 259. Unusual liquor set - marigold
- ___ 260. Apple Blossom Twigs IC shaped bowl - white - pretty
- ___ 261. Three Fruits ruffled bowl w/plain back - purple - pretty
- ___ 262. Enameled Stippled Flower ruffled bowl - peach opal
- ___ 263. Ski Star dome ftd 3 in 1 edge bowl - peach opal
- ___ 264. Stippled Petals banana boat shaped crimped edge dome ftd bowl - peach opal - unusual shape
- ___ 265. Petal & Fan 6" crimped edge plate - peach opal
- ___ 266. Four Flowers banana boat shaped, ruffled dish - peach opal - made from chop plate
- ___ 267. Smooth Rays 10" ruffled bowl w/Jeweled Heart back - peach opal
- ___ 268. Dogwood Spray dome ftd ruffled bowl - peach opal
- ___ 268a. M'burg Strawberry Wreath 10" ruffled bowl - marigold - radium, minor sliver on edge
- ___ 269. Two Flowers lg IC shaped ftd bowl - blue - fantastic
- ___ 270. N's Bushel Basket - ice green
- ___ 271. Scroll Embossed 9" plate - purple - super
- ___ 272. Hobstar & Cut Triangles ruffled bowl - amethyst
- ___ 273. Hobstar & Cut Triangles ruffled bowl - marigold
- ___ **274. Concord 3 in 1 edge bowl - green - very pretty**
- ___ 275. Sunflower & Diamond 9" vase - marigold
- ___ 276. Target 9 1/2" vase - purple
- ___ 277. Loetz type banana boat shaped dish - red
- ___ 278. Persian Medallion 4 sides up sauce - marigold
- ___ 279. Fenton's Fine Rib 10" vase - red
- ___ 280. Heavy Grape 7" ruffled bowl - purple
- ___ 281. Aurene type 2 1/4" miniature vase
- ___ 282. Imperial Grape & Memphis punch cups - purple - choice
- ___ **283. N's Corn vase w/stalk base - ice green**
- ___ 284. Wine decanters (2) - marigold - choice
- ___ 285. Strawberry PCE bowl w/BW back - green - pretty
- ___ 286. Tumblers including: Peach - blue; Grape & Gothic Arches - blue; Star & File - marigold; Daisy & Latice - marigold - choice
- ___ 287. Carnival Hobstar cracker jar - marigold
- ___ 288. Basketweave Open Edge JIP basket - red - crack in webbing
- ___ 289. Hobstar & Cut Triangles rose bowl - amethyst
- ___ 290. Grape Arbor ruffled hat - ice green - scarce, nice
- ___ 291. Daisy & Plume ruffled compote - marigold
- ___ 292. Thistle 3 in 1 edge bowl - green
- ___ 293. Blackberry spray ruffled hat - marigold
- ___ 294. Dragon & Lotus spt ftd IC shaped bowl - green - pretty
- ___ 295. Octagon sherbet - marigold
- ___ **296. Poppy Show ruffled bowl - blue - super pretty example, a dandy**
- ___ **297. Tree Trunk 10" vase - marigold**
- ___ **298. Peacocks 9" plate w/ribbed back - blue - fantastic electric irid.**
- ___ **299. Peacocks 9" plate w/ribbed back - amethyst - pretty**
- ___ **300. Peacocks 9" plate w/ribbed back - ice blue - rare color, light on irid.**
- ___ **301. Peacocks 9" plate w/ribbed back - ice green**
- ___ **302. Peacocks 9" plate w/ribbed back - marigold - pretty**
- ___ 303. Misc. lot of old marigold Carnival Glass - choice
- ___ 304. Misc. lot of contemporary Carnival glass - choice
- ___ 305. Misc. lot of damaged Carnival Glass - choice



27

Seeck Auctions

P.O. Box 377
Mason City, Iowa 50402

PRESORTED
FIRST CLASS MAIL
U.S. POSTAGE
PAID
MAIL EXPEDITORS

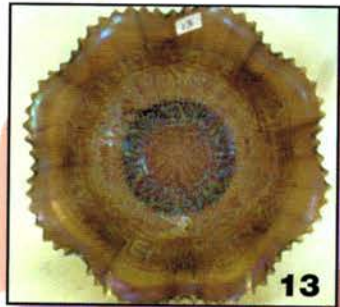
Carnival Glass

Auction

Saturday, Sept. 26th, 2009 -- 9:30 A.M.

The Late Ruth Moore Collection - Part II
Senior Activity Center

T4 P1 59
Lee Markley
PO Box 306
Mentone IN 46539-0306



13



47



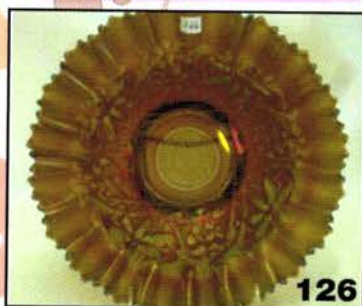
88



108



118



126



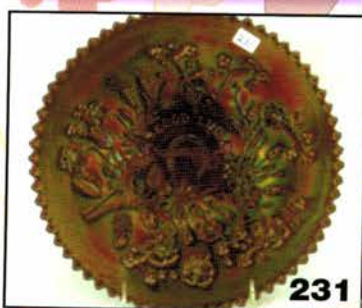
135



167



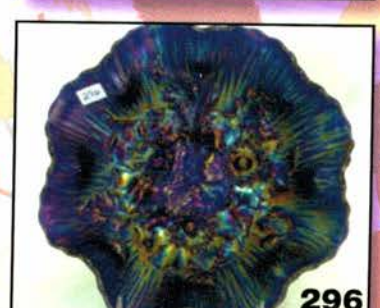
207



231



256



296