

Carnival Glass AUCTION

Saturday, May 16th, 2009 - 9:30 AM

Senior Activity Center
326 4th St NE
Mason City, Iowa



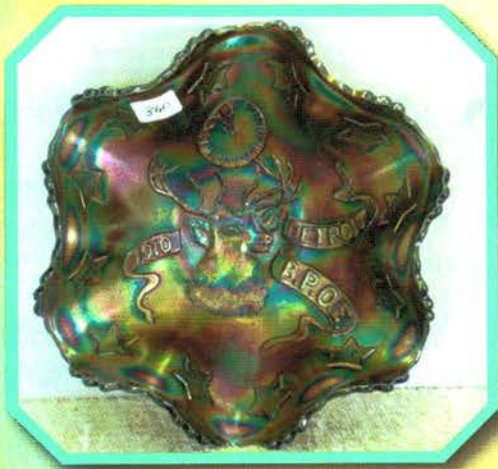
10



25



100



360



20

Seeck Auctions
JIM & JAN SEECK
641-424-1116

Carnival Glass Auction



Saturday, May 16th, 2009 - 9:30 AM
Senior Activity Center – Mason City, Iowa
326 4th St NE



(From South: Take US Hwy 65 into Mason City and turn right or East on 4th ST NE, go 2 blocks)
(From North: Take US Hwy 65 into Mason City and turn left or East on 4th ST NE, go 4 blocks)
(This building is next to the Charlie Brown Daycare play yard)

Preview: Friday, May 15th, 3 pm – 6 pm

NO BUYER'S PREMIUM

For Lots of Color Pictures Check our WEBSITE:

www.seeckauction.com

*** Please email us and we can put you on our Internet mailing list for auction updates and notices. (Please indicate Carnival Glass)**

Lodging: Mason City: Comfort Inn – (641)423-4444; Country Inn & Suites – (641)423-1770; Super 8 – (641)423-8855; Holiday Inn – (641)423-1640; Clear Lake: AmericInn – (641)357-8954; Best Western Holiday Lodge (641)357-5253.

TERMS: Cash or Check, VISA and MasterCard accepted w/proper ID. **4% Clerking Fee** on all purchases except for payment of cash or check. Announcements made day of sale take precedence over any printed information.

Seeck Auctions
641-424-1116

Seeck Auctions

EMAIL:
jimjan@seeckauction.com

ABSENTEE BID POLICY

1. Write-in bids will be accepted by sending the numbers of the item(s) desired and the amount bid on each to: **Seeck Auctions, PO Box 377, Mason City, Iowa 50402.**
2. You may call in your bids previous to the auction at (641)424-1116. (this is not live phone bidding)
3. You may email your bids to us: jimjan@seeckauction.com Include the numbers of the item(s) you would like to bid on and amount bid on each, please include your telephone number.
4. Live phone bidding is available. Bidding must start on item at \$500. Please call for details.
5. There is a **\$7 handling charge** for each successful bid. Shipping and insurance charges are additional.
6. Bidders will be notified by phone/email if their bid(s) are successful. This will be done 1 - 3 days after the auction.
7. Please have all bids in by **Thurs., May 14th.** All bids (by mail, phone or email) after this date may not be carried out.
8. Please place bids in the following increments: \$1 to \$300 - \$5 increments \$300 up - \$25 increments.
9. **If you do not receive an item that sold for less than your bid, assume we cancelled your bid because the piece of glass had below average color, manufacture problem, damage or was not listed correctly.**
10. Auction results are posted on our website within 2 weeks of the auction.

1. Tree Trunk 6 1/2" squatty vase - marigold
 2. Tree Trunk 6" squatty vase - green
 3. N's Fine Rib 6 1/2" squatty vase - marigold - pretty
 4. Diamond Points 7" squatty vase - marigold
 5. Rustic 7" squatty vase - white
 6. Diamond & Column 5 1/2" squatty vase - marigold
 7. Boggy Bayou 5" vase - marigold
 8. Paneled Diamond & Bows 8" vase - green
 9. Paneled Diamond & Bows 6" vase - blue
 10. Persian Garden 11" IC shaped bowl - purple - super pretty, a beauty!
 11. Persian Garden 11" IC shaped bowl - white - very pretty
 12. Arthur F Odell Quincy Jewelers, Peacock Tail ruffled hat - green
 13. 1910 General Furniture Co, Peacock Tail ruffled hat - green
 14. Smooth Panels 5" vases (2) - marigold - choice
 15. Fenton's Grape & Cable fruit bowl w/Persian Medallion interior - green - super nice, scarce
 16. Fenton's Grape & Cable fruit bowl w/Persian Medallion interior - blue - super pretty, nick on point
 17. Fenton's Grape & Cable fruit bowl w/Persian Medallion interior - marigold - nice
 18. Stippled Petals 3 in 1 edge dome ftd bowl w/Lily of the Valley enameling - peach opal
 19. Beads & Flowers 6" plate - peach opal
 20. Stippled Peacock at Urn master IC bowl - marigold - super pretty
 21. Star Medallion milk pitcher - smoke
 22. Star Medallion milk pitcher - marigold
 23. Star Medallion milk pitcher - clambroth
 24. Wreathed Cherries banana boat shaped sauce - purple
 25. NUART Homestead chop plate - purple - super pretty example, highly desirable
 26. Orange Tree ruffled compote - powder blue
 27. Imperial Grape 10" ruffled bowl - green
 28. Imperial Grape 6" ruffled sauces (3) - green - choice
 29. Four Pillars Variant 13" vase - purple - nice
 30. Imperial Grape ruffled bowl - purple - has electric blue super irid.
 31. Imperial Grape low ruffled bowl - smoke - super
 32. Imperial Grape low ruffled bowl - lavender - nice
 33. Wreathed Cherry master banana boat shaped bowl - white w/red cherries
 34. Wreathed Cherry master banana boat shaped bowl - marigold
 35. N's Peacock at the Fountain water pitcher - purple - scarce, nice
 36. Dugan Peacock at the Fountain tumblers (6) - purple - choice
 37. N's Peacock at the Fountain water pitcher - blue - cracked
 38. Singing Birds mugs (2) - blue - choice
 39. Singing Birds mugs (6) - marigold - choice
 40. Fenton's Peacock at Urn 9" plate - blue - fantastic piece!
 41. Peacock Tail tri-cornered sauce - green
 42. Corinth 6" pinched in vase - peach opal
 43. April Showers 10 1/2" vase - green
 44. April Showers 12" vase - amethyst
 45. N's Grape & Cable spt ftd 9" plate - ice green - a beauty, scarce
 45A. N's Grape & Cable spt ftd 9" plate - green
 46. N's Grape & Cable spt ftd 9" plate - marigold
 47. Long Hobstar 10" ruffled bowl - purple - scarce & pretty
 48. Long Hobstar 10" ruffled bowl - green - scarce
 49. Long Hobstar 10" ruffled bowl - marigold
 50. Rose Show 9" plate - lime green - extremely rare color, couple small chips on roses, a nice piece!
 51. Fine Cut & Roses rose bowl - smokey lavender - pretty
 52. Fine Cut & Roses rose bowl - purple
 53. Windmill water pitcher - marigold
 54. Windmill tumblers (2) - marigold - choice
 55. Peacocks 9" plate w/ribbed back - marigold - dark & super
 56. Peacocks 9" plate w/ribbed back - pastel marigold - lots of yellow irid. & pretty
 57. Peacocks 9" plate w/ribbed back - ice green - scarce
 58. Birds & Cherries card tray shaped bonbon - amethyst
 59. Birds & Cherries card tray shaped bonbon - marigold
 60. Daisy & Drape turned in vase - marigold - scarce, nice
 61. Daisy & Drape turned in vase - white - nice
 62. Kittens plate - marigold
 63. Kittens 4 sides up dish - marigold
 64. Kittens cereal bowl - marigold
 65. Grape & Cable hatpin holder - green - scarce, nice
 66. Grape & Cable hatpin holder - purple - also nice
 67. Grape & Cable hatpin holder - marigold
 68. Misc. lot of glass (7) - choice
 69. Basketweave Open Edge ruffled basket - aqua
 70. Diamond Lace 7 pc. water set - purple - beautiful set
 71. Dogwood Sprays dome ftd ruffled bowl - peach opal
 72. Four Flowers chop plate w/soda gold back - peach opal - scarce
 73. Mae West candlestick - red
 74. Florentine 10" candlestick - purple
 75. Norris N Smith advertising handgrip plate - amethyst - scarce, nice, turned up sharply
 76. Grape & Cable 8" handgrip plate - purple

- ___ 77. Three Fruits 9" plate w/BW back - green
- ___ 78. Open Rose 9" plate - amber - nice
- ___ 79. Open Rose 9" plate - marigold
- ___ **80. Pulled Loop 5" squatty vase - purple - super neat & pretty vase**
- ___ 81. Vintage powder jar - marigold
- ___ **82. Loganberry vase - marigold - dark & pretty**
- ___ 83. Loganberry vase - green - scarce
- ___ 84. Ftd Prism Panels vase - marigold
- ___ **85. Wishbone 9" ftd plate - purple - super pretty**
- ___ 86. Little Flowers ruffled sauce - aqua - scarce color
- ___ 87. Butterfly & Berry 7 pc. water set - marigold - very nice
- ___ 88. Flute & Cane tall milk pitcher - marigold - nice
- ___ 89. Flute & Cane squatty milk pitcher - marigold
- ___ **90. Heavy Webb 11" round bowl - peach opal - rare & desirable**
- ___ **91. Pansy ruffled bowl - purple - fantastic electric blue irid.**
- ___ **92. Pansy ruffled bowl - purple - super lavender irid.**
- ___ 93. Pansy ruffled bowl - amber - scarce, nice
- ___ 94. Pansy ruffled bowl - marigold - pretty
- ___ 95. Good Luck PCE bowl w/ribbed back - marigold - dark & nice
- ___ 96. Good Luck PCE bowl w/ribbed back - pastel marigold - lots of yellow irid.
- ___ 97. S-Repeat punch cups (6) - purple - choice
- ___ 98. Flowers & Frames dome ftd deep ruffled bowl - peach opal
- ___ 99. Flowers & Frames dome ftd deep ruffled bowl - purple
- ___ **100. Fashion water pitcher - purple - super pretty irid., extremely rare**
- ___ 101. Fashion water pitcher - marigold - nice
- ___ 102. Fashion tumbler - marigold
- ___ 103. Scales low round bowl - peach opal - almost a plate
- ___ 104. Pastel Swan - purple
- ___ **105. Three Row Open Edge IC shaped bowl - white - very scarce, nice**
- ___ 106. Persian Medallion 4 sides up sauce - marigold - whimsy shape
- ___ 107. Diamond & Column 14" vase - amethyst - super pretty, chip on top edge
- ___ 108. Diamond & Column 15" vases (2) - blue - choice
- ___ 109. Diamond & Column 15" vase - marigold
- ___ **110. Wishbone & Spades 6" plate - purple**
- ___ **111. Wishbone & Spades 6" plate - peach opal - souvenir of Tamoico, Miss.**
- ___ 112. Star of David & Bows dome ftd ruffled bowl - green
- ___ 113. Star of David & Bows dome ftd ruffled bowl - amethyst
- ___ 114. Caroline crimped edge square shaped bowl - peach opal - nice
- ___ **115. Tree Trunk mid-size 12 1/2" vase - green - very pretty**
- ___ **116. Tree Trunk mid-size 12" vase - purple - nice**
- ___ 117. Heart & Vine CRE bowl - blue - super irid.
- ___ 118. Heart & Vine CRE bowl - amethyst
- ___ 119. Dugan Cherries ftd ruffled bowl w/violet enameled decoration - peach opal
- ___ **120. Eat Paradise Sodas 6" plate - amethyst - super nice, scarce**
- ___ 121. Stretch Glass dolphins 10 1/2" centerpiece bowl - ice green - scarce
- ___ 122. Stretch Glass Dolphins 6 1/2" compote - ice blue
- ___ **123. Imperial Art Glass paperweight - purple - super rare & highly desirable, has chip on edge of base**
- ___ 124. Fans milk pitcher - marigold
- ___ **125. M'burg Many Stars IC shaped bowl - green - radium & super, has 6 pt star**
- ___ 126. Orange Tree shaving size mug - blue
- ___ **127. Leaf & Beads rose bowl - aqua opal - pastel & super**
- ___ 128. Leaf & Beads rose bowl - purple
- ___ 129. Leaf & Beads rose bowl - marigold
- ___ 130. Four Flowers 10" ruffled bowl - purple - super scarce, super nice
- ___ 131. Butterfly & Berry 9" vase - marigold
- ___ 132. Concave Diamonds tumbler - vaseline
- ___ 133. Leaf Chain ruffled bowl - blue
- ___ 134. Raindrops dome ftd 3 in 1 edge bowl - peach opal
- ___ **135. Rose Show ruffled bowl - aqua opal - scarce, nice, has some typical manufacture splits on edge**
- ___ **136. Rose Show ruffled bowl - marigold - very pretty**
- ___ 137. Fanciful 9" plate - marigold
- ___ 138. Four Pillars 11" vase - aqua opal - nice
- ___ 139. Four Pillars 10" vase - olive green
- ___ **140. Enameled Iris 5 pc water set - amethyst - scarce & nice**
- ___ 141. N's Peacock at the Fountain tumbler - blue - super
- ___ 142. Imperial Grape water pitcher - green
- ___ 143. Smooth Rays 10" ruffled bowl w/Jeweled Heart back - peach opal
- ___ 144. M'burg Peacock Tail Variant ruffled compote - green - radium, nice
- ___ **145. Peacocks ruffled bowl w/ribbed back - aqua opal - has slag throughout glass**
- ___ **146. Peacocks ruffled bowl w/ribbed back - aqua opal - scarce**
- ___ 147. Vintage small size epergne - marigold
- ___ 148. Three Row rose bowl - marigold - rare
- ___ 149. Pulled Loop 12 1/2" vase - peach opal
- ___ **150. Embroidered Mums ruffled bowl w/ribbed back - purple - scarce, nice**
- ___ **151. Embroidered Mums ruffled bowl w/ribbed back - marigold**
- ___ 152. Imperial Flute master berry bowl - purple

- ___ 153. Peacock & Grape ruffled bowl - lime green - pretty, scarce color
- ___ 154. Peacock & Grape ruffled bowl - marigold
- ___ **155. Oriental Poppy 7 pc. tankard water set - marigold - dark, nice**
- ___ 156. Stippled Robin mug - marigold
- ___ **157. Daisy Cut bell - marigold - nice**
- ___ 158. Fenton's Flowers ftd rose bowl - red - very rare, cracked
- ___ 159. Thin Panels 6" crimped edge JIP vase - peach opal
- ___ **160. Heart & Vine 9" plate - blue - super pretty plate**
- ___ 161. Stippled Rays ruffled sauce - marigold
- ___ **162. N's Thin Rib 11" vase - emerald green - this is super!**
- ___ 163. N's Thin Rib 10" vase - olive green
- ___ 164. Soutache dome ftd crimped edge low round bowl - peach opal
- ___ 165. Grape & Cable cracker jar - marigold - nice
- ___ 166. Fenton's Thin Rib 16" vase - blue
- ___ 167. Fenton's Thin Rib 15" vase - marigold
- ___ **168. Sunflower spt ftd ruffled bowl - green - super super pretty**
- ___ 169. Holly & Berry 7" ruffled bowl - peach opal
- ___ 170. Mary Ann vase - purple - scarce
- ___ 171. Mary Ann vases (2) - marigold - choice
- ___ 172. Mary Ann vase - vaseline - non-carnival
- ___ 173. Mary Ann vase - white opal - non-carnival
- ___ 174. Stag & Holly lg size ftd deep ruffled bowl - blue - nice
- ___ 175. Dragon & Strawberry IC shaped bowl - marigold - scarce & very nice, small nick on base
- ___ **176. N's Bushel basket - smoke - very scarce, pretty**
- ___ 177. N's Bushel basket - blue - electric type irid., nice
- ___ 178. N's Bushel basket - ice green - nice example
- ___ 179. N's Bushel basket - white
- ___ 179A. N's Bushel basket - black amethyst - non-carnival
- ___ **180. Morning Glory 16" funeral vase - marigold - dark & super**
- ___ 181. Ripple 8" vase - marigold - 2 3/8" base, nice
- ___ 182. Vintage 10" ruffled bowl - marigold
- ___ 183. Scales ruffled bowl - blue opal - very pretty
- ___ 184. Target 6" squatty vase - peach opal
- ___ **185. Cosmos & Cane large size rose bowl - honey amber - extremely rare rose bowl**
- ___ 186. File 7 1/2" ruffled bowl - purple - has plain interior
- ___ 187. M'burg Grape Wreath Variant 7" ruffled bowl - amethyst - radium
- ___ 188. Vintage 7" plate - blue - super
- ___ 189. Fishscale & Beads 5" ruffled bowl - peach opal
- ___ **190. Drapery Variant 8 1/2" vase - emerald green - has slight manufacturing peeling on top edge**
- ___ **191. Drapery Variant 8" vase - blue - very nice**
- ___ **192. Drapery Variant 9" vase - marigold - pretty**
- ___ 193. Daisy Wreath ruffled bowl - blue opal
- ___ 194. Stream of Hearts crimped edge ruffled compote - marigold
- ___ 195. Fishnet epergne - peach opal - scarce
- ___ 196. Persian Garden 6" plate - marigold
- ___ 197. Three Fruits ruffled bowl w/plain back - purple - super electric irid.
- ___ 198. Apple Blossom Twigs banana boat shaped bowl - peach opal - scarce
- ___ 199. Grape & Cable tankard tumbler - marigold
- ___ **200. 1911 Atlantic City Elks 7" plate - blue - extremely rare & highly desirable**
- ___ 201. Jacob's Ladder rose bowl - marigold
- ___ 202. Grape & Cable IC sauce - ice green - nice
- ___ 203. Grape & Cable IC sauce - white - also nice
- ___ 204. Ribbon Tie ruffled bowl - green
- ___ **205. Tree Trunk 11" vase - ice blue - scarce & desirable**
- ___ 206. Tree Trunk 9" vase - purple
- ___ 207. Grape & Cable punch cups (4) - ice blue - scarce if you need them, choice
- ___ 208. Raindrops dome ftd banana boat shaped bowl - peach opal - dark, nice
- ___ 209. Fenton Panels 12" vase - ice green
- ___ **210. Pansy low ruffled plate - lavender - flat, flat & super!**
- ___ 211. Pansy low ruffled bowl - smoke
- ___ 212. Fenton's Peacock at Urn 8 ruffled bowl - blue - nice
- ___ 213. Fenton's Peacock at Urn 6 ruffled bowl - marigold - pretty
- ___ 214. M'burg Grape Wreath 8" IC shaped bowl - green - satin
- ___ **215. Ripple 15" funeral vase - marigold - slight manufacturing peeling on top edge**
- ___ 216. Nautilus whimsey sugar - peach opal
- ___ 217. Basketweave Open Edge ruffled basket - aqua
- ___ 218. Heavy Grape 8" plate - amber - this plate is stretched out to 9", unusual shape
- ___ 219. Vintage 6" ruffled sauce - marigold - dark
- ___ **220. Peacocks PCE bowl w/ribbed back - marigold - scarce**
- ___ 221. Stippled Singing Birds mug - marigold
- ___ 222. Singing Birds mug - marigold
- ___ 223. Apple Blossom Twigs 3 in 1 edge bowl - peach opal - nice
- ___ 224. Persian Medallion hair receiver - marigold
- ___ **225. Hattie chop plate - marigold - super pretty, rare piece**
- ___ 226. Miniature Morning Glory 7" vase - marigold
- ___ 227. Ten Mums 3 in 1 edge bowl - amethyst - pretty
- ___ 228. Holly ruffled hatshape - red - scarce
- ___ 229. Beaded Acanthus milk pitcher - marigold
- ___ **230. N's Corn vase w/stalk base - white - scarce**
- ___ **231. N's Corn vase w/plain base - white - could almost call this clear w/pretty irid.**
- ___ 232. Windmill pickle dish - purple - pretty
- ___ 233. Fanciful IC shaped bowl - peach opal
- ___ 234. Ftd Fine Rib JIP vase - marigold

- ___ 235. Drapery 8" vase - sapphire - extremely rare vase & super pretty, normal feet
- ___ 236. Drapery 7 1/2" vase - ice blue - super pretty, minor spot on one foot
- ___ 237. Drapery 7" vase - lime green - normal feet, scarce color
- ___ 238. Drapery 7 1/2" vase - ice green
- ___ 239. Drapery 8" vase - white - nice
- ___ 240. M'burg Fleur De Lis IC shaped collar based bowl - green - satin & nice, scarce shape
- ___ 241. Kokomo ftd rose bowl - marigold
- ___ 242. Persian Medallion bonbon - aqua - scarce color
- ___ 243. Grape & Cable 6" plate - purple - super
- ___ 244. Three Fruits ruffled bowl w/BW back - purple
- ___ 245. **Palm Beach 7" plate - amethyst - has gold back, rare**
- ___ 246. Plume Panels 11" vase - blue
- ___ 247. Plume Panels 13" vase - amethyst
- ___ 248. M'burg Cosmos ruffled sauce - green - radium, rare ruffled
- ___ 249. Dragon & Lotus ruffled bowl - marigold
- ___ 250. **Peacock at the Fountain fruit bowl - purple - very pretty & highly desirable**
- ___ 251. Miller's Furniture Harrisburg, PA Basketweave Open Edge two sides up basket - marigold
- ___ 252. John H Brand Furniture Co., Wilmington, DEL. Basketweave Open Edge two sides up basket - marigold
- ___ 253. Feldman Bros. Furniture, Salisbury, MD. Basketweave Open Edge two sides up basket - marigold
- ___ 254. Puzzle round bonbon - purple - super pretty
- ___ 255. **Beaded Bullseye 7 1/2" vase - purple - super pretty**
- ___ 256. Persian Medallion 6" plate - blue
- ___ 257. Cherry Chain 6" plate - marigold
- ___ 258. Shell & Sand round bowl - marigold - nice
- ___ 259. Pansy pickle dish - marigold
- ___ 260. **M'burg Peacock IC sauce - amethyst - satin, pretty**
- ___ 261. Corinth 8 1/2" vase - amethyst
- ___ 262. Corinth 9" vase - aqua
- ___ 263. Corinth 9" vase - marigold
- ___ 264. Coin Dot 9" 3 in 1 edge bowl - amethyst
- ___ 265. **Stippled Three Fruits ruffled bowl w/ribbed back - marigold - pretty**
- ___ 266. M'burg Diamonds tumbler - amethyst
- ___ 267. Scroll Embossed lg size compote - purple - super
- ___ 268. Scroll Embossed lg size compote - marigold
- ___ 269. Fashion punch bowl base - marigold
- ___ 270. **Grape & Cable candle lamp shade only - marigold**
- ___ 271. Strawberry 9" plate w/BW back - green
- ___ 272. Stippled Rays bonbon - dark olive green
- ___ 273. Imperial Grape 11" ruffled bowl - purple - nice
- ___ 274. Beauty Bud 10" vase - amethyst
- ___ 275. **Poppy Show 9" plate - marigold - very pretty plate, minor nick on base**
- ___ 276. Raindrops dome ftd ruffled bowl - peach opal
- ___ 277. Fisherman's mug - purple - nice
- ___ 278. Raspberry ftd ruffled bowl - marigold - pretty yellow irid.
- ___ 279. Ripple 6" vase - marigold - 2 1/2" base
- ___ 280. **Petal & Fan 10" ruffled bowl - purple - very, very pretty plus scarce**
- ___ 281. Town Pump & Trough - green - both signed Robert Hanson
- ___ 282. Rose bowl - red - signed Robert Hanson
- ___ 283. Daisy & Button toothpick - aqua blue - signed Ronald Hanson
- ___ 284. Turkey toothpick - red - signed Robert Hanson
- ___ 285. Daisy & Button JIP 4" vase - signed Terry Crider 1981 #14 of 150
- ___ 286. Orange Tree ruffled bowl - blue
- ___ 287. Orange Tree ruffled bowl - marigold
- ___ 288. Daisy & Plume ftd rose bowl w/Raspberry interior - purple - nice
- ___ 289. Daisy & Plume ftd rose bowl w/Rayed interior - green
- ___ 290. Grape & Cable sweetmeat - purple - nice
- ___ 291. Diamond Ring ruffled bowl - smoke
- ___ 292. **Round Up ruffled bowl - peach opal - nice**
- ___ 293. Round Up ruffled bowl - blue
- ___ 294. Holly 3 in 1 edge bowl - amethyst
- ___ 295. Apple Blossom Twigs smooth edge ruffled bowl - purple - nice
- ___ 296. Leaf Chain 9" plate - white
- ___ 297. Leaf Chain 9" plate - green - silvery
- ___ 298. April Showers 7" squatty vase - green
- ___ 299. April Showers 7" squatty vase - blue
- ___ 300. **Mary Ann 3-handled loving cup - marigold - extremely rare & highly desirable**
- ___ 301. Mary Ann 3-handled loving cup - clear - not carnival
- ___ 302. Drapery rose bowl - purple - nice
- ___ 303. Grape & Gothic Arches spooner - irid. custard w/gold trim
- ___ 304. Peacock Tail square shaped hatshape - blue
- ___ 305. Stag & Holly lg size ftd IC shaped bowl - vase-line - scarce
- ___ 306. Stag & Holly lg size ftd IC shaped bowl - marigold
- ___ 307. Stork & Rushes master berry bowl - marigold
- ___ 308. Beaded Cable rose bowl - marigold
- ___ 309. Ripple 15 1/2" vase, 4 3/4" base - green
- ___ 310. Hearts & Flowers ruffled bowl w/ribbed back - ice green - nick on edge
- ___ 311. Little Barrel - smoke - scarce, nice
- ___ 312. Heron mug - purple - super pretty & scarce
- ___ 313. Fine Cut & Roses rose bowl - ice blue
- ___ 314. Basketweave Open Edge 2 sides up basket - black amethyst, scarce color
- ___ 315. **Panther master berry bowl - dark olive green - rare color**

- ___ 316. Octagon 10 1/2" square shaped bowl - green - very rare bowl
- ___ 317. Ski Star ruffled sauce - peach opal
- ___ 318. Round Up IC shaped bowl - peach opal
- ___ 319. Lotus & Grape ftd round sauce - blue
- ___ **320. Stag & Holly spt ftd rose bowl - blue - scarce**
- ___ 321. Grape & Cable 9" plate w/plain back - purple - pretty
- ___ 322. N's Peacock at Urn IC sauce - blue - pretty
- ___ 323. Chrysanthemum lg size ftd IC shaped bowl - marigold - pretty
- ___ 324. Propeller miniature compote - marigold
- ___ **325. Fern Brand Chocolates double handgrip plate - amethyst - scarce, nice**
- ___ 326. Ripple 10" vase, 2 7/8" base - purple
- ___ 327. Ripple 11" vase, 2 7/8" base - marigold
- ___ 328. Ripple 8" vase, 2 7/8" base - green
- ___ 329. Bellaire Good Will Tour bowl - marigold
- ___ 330. Windmill milk pitcher - green - scarce color
- ___ 331. Flowers & Frames dome ftd ruffled bowl - purple - nice
- ___ 332. N's Eight Sided bushel basket - white - scarce
- ___ 333. Three Fruits PCE bowl w/BW back - purple
- ___ 334. Luster Rose fernery - marigold
- ___ 335. Butterfly & Berry ftd master berry bowl - blue
- ___ **336. Vintage 10" IC shaped bowl - lime green - very rare bowl**
- ___ 337. Holly ruffled bowl - purple
- ___ 338. Knotted Beads 12" vase - green
- ___ 339. Knotted Beads 10" crimped edge vase - marigold
- ___ 340. Diamond & Daisy Cut 7 pc. water set - marigold
- ___ 341. Florentine 10" candlestick - lavender
- ___ 342. Three Fruits spt ftd ruffled bowl - purple
- ___ 343. Rustic mid-size 15" vase - marigold
- ___ 344. Scroll Embossed small size ruffled compote - green
- ___ 345. Windmill ruffled bowl - purple - nice
- ___ 346. Diamond Points 10" vase - purple
- ___ 347. Freefold 12" vase - marigold
- ___ 348. Raspberry milk pitcher - purple - scarce
- ___ 349. Inverted Strawberry creamer - marigold
- ___ **350. N's Peacock at Urn master IC bowl - ice blue - super scarce & nice**
- ___ 351. Fashion punch cup - smokey powder blue
- ___ 352. Drapery candy dish - purple - nice
- ___ 353. Inverted Strawberry 4 1/4" round sauce - amethyst
- ___ 354. Orange Tree hatpin holder - blue - nice
- ___ 355. Australian Kingfisher ruffled sauce - purple
- ___ 356. M'burg Grape Wreath Variant 8" crimped edge ruffled bowl - amethyst - radium
- ___ 357. Peacock & Grape IC shaped bowl - green
- ___ 358. Grape & Cable PCE bowl w/BW back - purple
- ___ 359. Fenton's Fine Rib 10 1/2" vase - blue
- ___ **360. 1910 Detroit Elks ruffled bowl - blue - super scarce & nice**
- ___ **361. 1910 Detroit Elks ruffled bowl - green - scare & highly desirable**
- ___ 362. 3 Contemporary pcs. including 2001 TCGC commemorative - choice
- ___ 363. Thin Rib 14" mid-size vase - sapphire - large chip on base, lg chip on point
- ___ 364. Inverted Strawberry tankard water pitcher - green - base has been polished
- ___ 365. Inverted Strawberry tumbler - green - repaired base
- ___ 366. Paneled Dandelion tankard water pitcher - amethyst - hole in bottom corner
- ___ 367. Inverted Strawberry butter dish - marigold - lg chip on rim of base, finial chipped off
- ___ 368. Inverted Strawberry butter dish lid - amethyst - finial chipped
- ___ 369. Wishbone 10" PCE bowl - marigold - chip on base
- ___ 370. Round Up ruffled bowl - white - chip on back edge
- ___ 371. Grape & Cable small size fruit bowl - purple - 2 pts chipped off & glued
- ___ 372. Fenton's Thin Rib 12" vase - blue - base chip
- ___ 373. Big Basketweave 11" vase - blue - chip on base
- ___ 374. Stippled Grape & Cable humidior - blue - rare, one prong broke off on lid, other roughness on lid & base
- ___ 375. Fine Cut & Roses rose bowl - ice blue - lg chip on foot
- ___ 376. M'burg Rays & Ribbons ruffled bowl - amethyst - several small chips on edge
- ___ 377. Inverted Feather cracker jar - green - lid chip, chip on bottom of base
- ___ 378. Grape & Cable cvd sugar bowl - green - base is damaged, lid is super & perfect
- ___ 379. Wishbone ftd ruffled bowl - marigold - large chip on edge
- ___ 380. Inverted Strawberry spooner - amethyst - edge chip
- ___ 381. Good Luck ruffled bowl w/ribbed back - blue - point chipped off
- ___ 382. Leaf Columns 10" vase - marigold - damage on top edge
- ___ 383. Ripple 11 1/2" vase - aqua - burst in center of vase
- ___ 384. Grape & Cable punch bowl & base - green - base is perfect, bowl has several chips on top edge & base chip
- ___ 385. M'burg Many Stars 3 in 1 edge bowl - green - large chip on base, damage on edge
- ___ 386. Miniature Morning Glory 5 1/2" vase - green - large open bubble on base
- ___ 387. Miniature Morning Glory 4" vase - marigold - lg chip on base
- ___ 388. Miniature Morning Glory 6" vase - smoke - base crack
- ___ 389. Inverted Strawberry spittoon - green - crack on edge of base
- ___ 390. Fenton's Peacock at Urn 9" plate - marigold - large open bubble on base
- ___ 391. Carnival Glass (5) - all damaged - choice



300

Seeck Auctions

P.O. Box 377
Mason City, Iowa 50402

PRESORTED
FIRST CLASS MAIL
U.S. POSTAGE
PAID
MAIL EXPEDITORS

Carnival Glass AUCTION

Saturday, May 16th, 2009 - 9:30 AM

Senior Activity Center
326 4th St NE
Mason City, Iowa

T4 P1 62
Lee Markley
PO Box 306
Mentone IN 46539-0306

