

# Keystone Carnival Glass Convention 2009



**Jim Wroda Auction Services LTD**  
5239 ST RT 49 S  
Greenville, Ohio 45331  
[www.jimwrodaauction.com](http://www.jimwrodaauction.com)

PRESORTED  
FIRST CLASS MAIL  
U.S. POSTAGE  
**PAID**  
CELINA, OH  
PERMIT NO. 99

**FIRST CLASS POSTAGE PAID**

10-10\*\*\*\*\*AUTO\*\*MIXED AADC 45

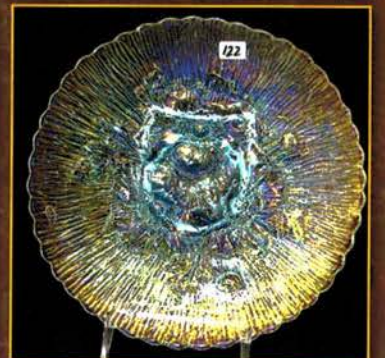
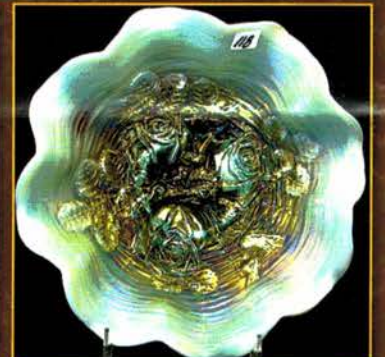
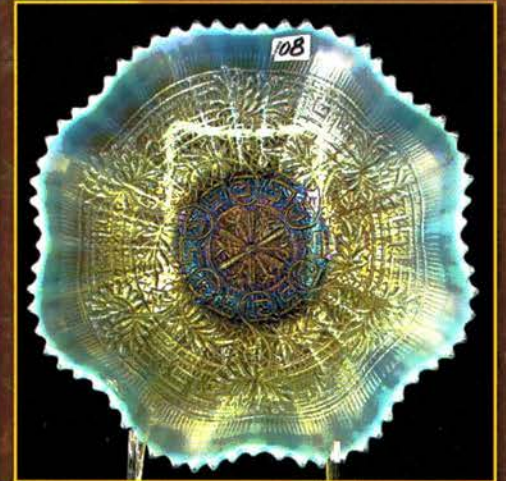
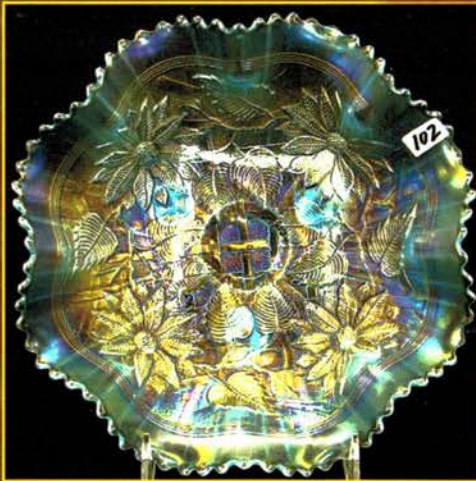
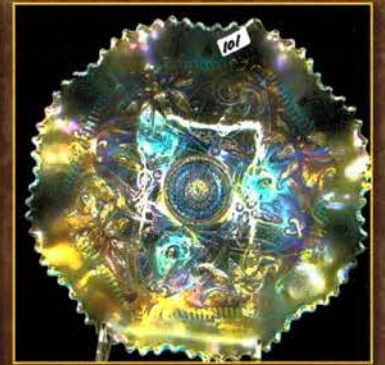
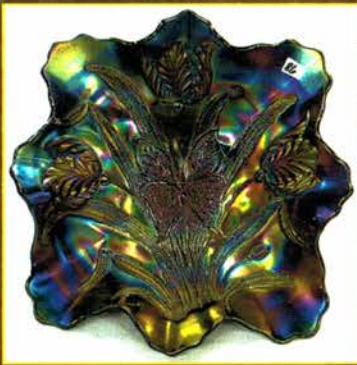
LEE MARKLEY  
PO BOX 306  
502 N BROADWAY ST  
MENTONE IN 46539-9531



**The Schmoker Collection- Wichita KS.**  
**Saturday May 2nd 2009 at 9:30 AM**  
with an early bird tumbler auction at 8:30AM

*Keeper of the Plains*  
*Volume 7, Series 2009*







# Keystone Carnival Glass Convention Auction

(This is a public auction. You do not need to be a member of Keystone to participate in the auction.)

## Saturday, May 2nd 2009 at 9:30 a.m.

### with an Early Bird Tumbler Auction at 8:30 a.m.

Preview Friday, May 1st, 2009 10 a.m. to 3 p.m. and Saturday morning at 7:30 a.m. till auction time

## Harrisburg Holiday Inn Hotel & Conference Center

### New Cumberland, PA

148 Sheraton Drive, New Cumberland (Harrisburg), PA 17070

717.774.2721 for reservations mention Keystone Carnival Glass Club.

Directions: Exit 242 (New Cumberland) off the PA turnpike. Hotel is immediately off the exit.

#### 2009 Convention events:

Wednesday April 29th at 6:00 pm- Pizza night and Bingo

Thursday April 30th – Room Viewing followed by John Szebin Seminar at 7:00pm

Friday May 1st – Auction preview from 10 am to 3pm, Banquet at 6 pm,

w/guest Speakers Dorothy and Emmett Morgan, Texas

Saturday May 2nd Auction, The Schmoker Collection, Wichita KS.

My my my.... what a collection we have for you this year at the Keystone Convention. this year we present the Schmoker collection from Wichita KS. Better be ready for this one! An outstanding selection of glass for you to bid on. The only way you will be disappointed is if you do not get any of this wonderful glass being offered!! Nola and Keith did such a great job collecting. Just wait till you see it in person.... Not much more we can say here... just show up and go home happy!

If you cannot make it, but see some glass in the brochure you would like a chance at... Give Laurie a call and she will help you out! You can also visit our website at [www.jimwrodaauction.com](http://www.jimwrodaauction.com). THANKS!!! Jim

#### \*\*\*\*\*Mail, E-mail, Phone, and Absentee Bids Policy:\*\*\*\*\*

1. Phone inquiries on items of interest are welcome! 937.548.7835
2. Bidders take full responsibility to honor any and all bids that are executed in your behalf.
3. All items to be paid for within 7 days of notification unless other arrangements are made prior to auction. Successful absentee bidders must also pay **estimated shipping costs**. **NOTE:** There will be a \$5.00 fee added, per item, to the price of all successful absentee bids plus postage and insurance.
4. All items bid competitively against the audience. **We do not start with your bid.** Items will be bid on in perfect condition with average to above average iridescence unless otherwise stated or noted on your order of sale list or absentee bid sheet. **We will describe each item as accurately as possible!! (see listing) Bids will not be carried out if a damage is found during auction.** If manufacture problems bother you such as air bubbles, pulled points, soda ash, tool marks, or any other manufacturing flaw, please be specific in your mail bids or email bids. *If there is a manufacture flaw on an item that we feel is truly distracting, we have noted that in the listing already. Auction Company has the right NOT to execute an absentee bid for any reason.*
5. All bids can be called in to: 937.447.4905. Faxed to 937.548.3492, or sent to 5239 St. Rt. 49 South, Greenville, OH 45331. You can also e-mail bids directly from our website.
6. **All mail, faxed, write-in, and email bids due by Wednesday, April 29th – 3:00 p.m. (due to traveling!)**
7. **Anyone wishing to live phone bid, requests due by Wednesday, April 29th – 12:00 p.m.**
8. If someone in the audience is bidding for you they must pay for the item(s) before leaving.

NOTICE: Laurie will get your items to you as fast as she can but, PLEASE allow 2 to 3 weeks for your items to arrive.

\*\*\*\*To view more pictures on the web: [www.jimwrodaauction.com](http://www.jimwrodaauction.com) \*\*\*\*

**Terms and Conditions of Auction:** Cash, Travelers checks, business or personal checks with proper I.D. Also Visa/MC and Discover with a 3% clerk fee. All items being sold **AS IS WHERE IS** with **NO MINIMUM** and **NO RESERVE!** Everything sells to highest bidder.

\*\*\*\*Please use the preview times **WISELY!** Look over your items of interest.\*\*\*\*



## Jim Wroda Auction Services

Jim Wroda and Mike Baker CAI – Auctioneers

5239 St. Rt. 49 South, Greenville, OH 45331

Phone: 937.548.7835

Email: [laurie@jimwrodaauction.com](mailto:laurie@jimwrodaauction.com)

Laurie's mobile (if needed after weds.) 937-459-9562



Licensed by the State of Pennsylvania- Jim Wroda license #AU005279 – Mike Baker license #AU005297

Rapid Printing – Greenville, Ohio – 937-548-1010



## **Early Bird Tumbler Auction at 8:30 AM**

1	Mari Rising Sun juice glass	60	FROSTY WHITE Peacock at Fountain tumbler.
2	Mari Grape & Gothic Arches tumbler	61	White Orange Tree Orchard tumbler
3	Mari Fentonia tumbler. Scarce	62	RARE White Blueberry tumbler
4	Mari Oriental Poppy Tumbler		
5	Mari Orange Tree Orchard tumbler, VERY DARK		
6	Mari Octagon tumbler		
7	Mari Raspberry tumbler		
8	Mari Butterfly & Berry tumbler	63	RED 10" Stretch vase w/polished pontil
9	Mari Butterfly & Fern tumbler	64	Imperial red 9 1/2" Stretch vase
10	Mari Daisy & lattice tumbler	65	Fenton 12" celeste blue Cut Ovals candlesticks.
11	Mari Star Medallion tumbler	66	Imperial smoke Double Scroll candlesticks
12	Mari Heavy Iris tumbler	67	mari. 8" Wicker Works plate
13	Mari Banded Diamonds tumbler	68	(2) green G & C candle lamps. Both very nice. Selling Choice.
14	Mari Inwald Drapery Variant tumbler		
15	Mari Harvest Flower tumbler	69	Fenton mari. Coin Dot 7 pc. water set
16	Mari Grape Arbor tumbler	70	Purple Top of the Morning hat pin. Very Scarce. Tiny tiny nick on back.
17	Fenton Mari Waterlily tumbler		
18	Mari Rising Sun tumbler	71	Electric purple Elegance hat pin. Very Scarce.
19	Nwood mari HP tumbler	72	Beautiful green Heart & Flower compote. Very scarce w/really nice color.
20	Mari Peacock at Fountain tumbler		
21	Mari Acorn Burr tumbler	73	Nwood AO Heart & Flower compote.
22	Mari Diamonds tumbler	74	Nwood pumpkin mari. Heart & Flower compote. Nice
23	Mari Cut Cosmos tumbler	75	Nwood blue Heart & Flower compote. Hard to find
24	Mari Heavy Iris tumbler.	76	Nwood black amy. Heart & Flower compote. Super electric iridescence on a tough color.
25	Mari Hobstar & Shield tumbler		
26	Mari Floral & Grape tumbler	77	Nwood IG Heart & Flower compote.
27	Mari Springtime tumbler	78	Nwood IB Heart & Flower compote. Very Frosty
28	Scarce Mari White Oak tumbler	79	Nwood white Heart & Flower compote. Very Frosty.
29	Purple HP tumbler- Enameled Cherries	80	DUGAN 8" IG PONY 10 RUFFLE BOWL. SCARCE
30	Elec Purple Peacock at Fountain tumbler	81	Dugan 8 1/2" PO Fanciful low ruffle bowl
31	Elec purple Open Rose tumbler	82	Dugan 9" white Round Up low ICS bowl
32	Purple Wreath Cherry tumbler	83	Dugan 7" frosty white Persian Garden plate
33	Purple Singing Birds tumbler. Super	84	Dugan 8 1/2" mari. Brooklyn Bridge 10 ruffle bowl
34	Purple Diamonds tumbler. Radium irid	85	Dugan 9" purple Flower & Frames tri-corner CRE bowl. Nice electric highlights.
35	Radium Purple Perfection tumbler. Scarce		
36	Black Amy Heavy Iris tumbler	86	DUGAN STUNNING ELEC. PURPLE BUTTERFLY & TULIP FOOTED BOWL. AN ABSOLUTE GEM!!!
37	Purple Acorn Burr tumbler		
38	Purple Beaded Shell tumbler	87	DUGAN 13" PURPLE PERSIAN GARDENS CHOP PLATE. EXTREMELY HARD TO FIND. VERY NICE COLOR. ALMOST LAVENDER.
39	Elec Purple Heavy Iris tumbler		
40	Purple Fluffy Peacock tumbler		
41	Elec Purple Fashion tumbler	88	DUGAN 10" ELEC. PURPLE WISHBONE & SPADES CHOP PLATE. NICE BRIGHT COLOR.
42	Purple Greek Key tumbler		
43	Purple Grape & Cable tumbler	89	DUGAN 10" PURPLE FARMYARD 8 RUFFLE BOWL W/BRONZY IRIDESCENCE. SCARCE.
44	Blue Milady tumbler. Scarce		
45	Blue Field Thistle tumbler	90	NWOOD ELEC. BLUE PEACH WATER PITCHER. BEAUTIFUL EXAMPLE!
46	Blue GOD & HOME tumbler		
47	Blue Paneled Dandelion tumbler	91	Nwood elec. blue Peach tumbler. Super.
48	Blue Floral & Grape tumbler	92	Nwood green G & C water pitcher. Super multicolor iridescence
49	Blue Bouquet tumbler		
50	Blue Rambler Rose tumbler	93	Nwood elec. green G & C tumbler
51	Blue Peacock at Fountain tumbler	94	NWOOD DARK ICE BLUE PEACOCK AT FOUNTAIN WATER PITCHER W/FROSTY IRIDESCENCE.
52	Green Acorn Burr tumbler. Scarce		
53	RARE HONEY AMBER PEACOCK AT FOUNTAIN tumbler. Only four reported as far as we know.	95	Nwood IB Peacock at Fountain tumbler.
54	Green Diamonds tumbler	96	Nwood green Greek Key water pitcher. Always desirable
55	Green Blackberry Block tumbler		
56	Green Butterfly & Berry tumbler	97	RARE NWOOD WHITE WISHBONE EPERGNE. SUPER FROSTY.
57	Celeste Blue Concave Diamond tumbler w/ coaster		
58	RARE IB DANDELION TUMBLER. SUPER!	98	Nwood 10" pastel mari./clambroth Wishbone chop plate. Great pastel iridescence
59	IB Grape Arbor tumbler		

***This ends the Early Bird Tumbler auction.  
We will begin the CG auction at 9:30 AM SHARP!***



99	Nwood 9" green Wishbone PCE bowl.	132	VERY RARE FENTON 18" ELEC. GREEN RUSTIC FUNERAL VASE W/PLUNGER BASE. BEAUTIFUL MULTICOLOR IRIDESCENCE.
100	Nwood 8" mari. Wishbone footed bowl. Has an odd honey amber color to bowl. Really cool!!!	133	EXTREMELY BEAUTIFUL FENTON 17" ELEC. BLUE RUSTIC FUNERAL VASE W/PLUNGER BASE. BETTER GET THIS ONE!!!
101	NWOOD 9" IB WISHBONE FOOTED BOWL. EXTREMELY FROSTY. A GREAT EXAMPLE!!	134	Fenton blue Butterfly & Fern 7 Pc. water set. Scarce.
102	NWOOD 9" IB POINSETTIA & LATTICE FOOTED BOWL. EXTREMELY FROSTY.	135	Fenton blue Stag & Holly giant rose bowl. Very nice!
103	Nwood 8 1/2" IB Heart & Flower ruffled bowl	136	Fenton 10" blue Stag & Holly footed ICS bowl.
104	NWOOD 8 1/2" IG HEART & FLOWER RUFFLED BOWL. SUPER MULTICOLOR IRIDESCENCE. ONE OF THE BETTER ONES.	137	Fenton 11" dark mari. Stag & Holly footed chop plate.
105	Nwood 8 1/2" white Heart & Flower ruffled bowl	138	Fenton 10" mari. Two Flowers chop plate. Very Scarce!!!
106	Nwood 8 1/2" mari. Heart & Flower ruffled bowl	139	FENTON 8" CELESTE BLUE G & C FOOTED BOWL. GREAT STRETCHY IRIDESCENCE.
107	Nwood 8 1/2" elec. blue Embroidered Mums ruffled bowl	140	Fenton 9" purple 10 Mums CRE bowl.
108	NWOOD 8 1/2" AQUA EMBROIDERED MUMS RUFFLED BOWL. RARE COLOR. NICE!	141	Fenton 9" blue Dragon & Lotus 8 ruffle bowl.
109	NWOOD 8 1/2" AQUA OPAL EMBROIDERED MUMS RUFFLED BOWL. AN EXTREMELY RARE AND OUTSTANDING MULTICOLOR IRIDESCENCE!!!	142	Fenton 9" apple green Dragon & Lotus 8 ruffle bowl.
110	Nwood mari. G & C 11 pc. punch set. Table size w/ round top	143	Fenton 9" purple Dragon & Lotus 8 ruffled bowl.
111	Nwood dark mari. G & C 4 pc. table set. Nice!	144	FENTON 9" RED DRAGON & LOTUS ICS BOWL. GREAT PRESSING AND DETAIL!!!
112	NWOOD 9" EMERALD GREEN ROSE SHOW PLATE. TRUE EMERALD WITH BLASTING BLUE IRIDESCENCE ON A PERFECT PLATE. ONE OF THE BEST WE HAVE EVER SEEN. JUST BUY IT!!!	145	FENTON 8" DARK RED STAG & HOLLY FTD BOWL. ANOTHER BEAUTY
113	NWOOD 9" FROSTY LIME GREEN ROSE SHOW PLATE. OUTSTANDING!!! GIVES THE APPEARANCE OF VASELINE.	146	Fenton 8 1/2" smoky red Holly 8 ruffled bowl. Nice!!
114	NWOOD 9" PUMPKIN MARI. ROSE SHOW PLATE. BEAUTIFUL!!!	147	Fenton 10" red Fine Rib vase.
115	NWOOD 9" PASTEL MARI. ROSE SHOW PLATE WITH BLASTING YELLOW AND BLUE IRIDESCENCE. NEVER SEEN ONE LIKE THIS.	148	FENTON 7" RED COIN DOT DEEP ROUND BOWL. VERY RARE PATTERN IN SOLID RED.
116	Nwood 9" elec. blue Rose Show plate. Super multicolor iridescence.	149	Fenton 7" red Leaf Chain ruffled bowl. Super color!
117	Nwood 9" white Rose Show with yellow & blue iridescence.	150	Fenton 7" red Vintage ruffled bowl. Very tough to find.
118	Nwood 8" pastel AO Rose Show bowl. Unbelievable amount of opal on this scarce bowl!!!	151	Fenton 5" red Panther footed bowl. Very scarce!
119	Nwood 8" elec. green Rose Show bowl with nice multicolor iridescence.	152	Fenton 6" red Stippled Rays dome ftd. bowl.
120	Nwood 8" IG Rose Show bowl. Very scarce and nice!	153	Fenton 6" red Blackberry Spray square hat.
121	Nwood 9" blue Poppy Show plate. A nice one.	154	Fenton 7" red Acorn round bowl.
122	Nwood 9" IB Poppy Show plate. Nice frosty iridescence.	155	Fenton 5" red Open Edge hat
123	Nwood 9" mari. Good Luck plate.	156	RARE Fenton 5" green Sailboats ruffled bowl Not many of these around!!!
124	Nwood 9" purple Good Luck plate.	157	Fenton 5" aqua Panther footed bowl
125	Nwood 9" blue stippled Good Luck plate w/super iridescence!	158	<b>EXTREMELY RARE</b> FENTON 7" PURPLE HORSE HEAD MEDALLION FLAT PLATE. ONE OF ONLY 2 KNOWN. GREAT DETAIL AND COLOR!!!
126	Nwood 9" green Good Luck plate.	159	FENTON 7" POWDER BLUE HORSE HEAD MEDALLION FLAT PLATE. RARE. ANOTHER TOUGH PLATE.
127	Nwood 9" emerald green G & C stippled plate. Bright iridescence.	160	Fenton 7" mari. Horse Head Medallion flat plate.
128	NWOOD 9" SAPPHIRE G & C STIPPLED PLATE. IF A PIECE OF SAPPHIRE COULD HAVE ELECTRIC IRIDESCENCE THIS WOULD BE IT.	161	Fenton 7" green Horse Head Medallion footed ruffled bowl. Very Scarce.
129	Nwood 9" green G & C stippled Plate. Old Rose Distilling. Great Color!	162	Fenton mari. Horse Head Medallion rose bowl. Nice.
130	Nwood 9" purple Wishbone footed plate.	163	AMAZING FENTON ELEC. BLUE 1914 PARKERSBURG ELKS PLATE. ONE OF THE BEST!!!
131	FENTON ELEC. BLUE BLUEBERRY WATER PITCHER. ONE OF THE BEST WE HAVE EVER SEEN.	164	FENTON 7" BLUE ILLINOIS SOLDIER & SAILORS PLATE. GREAT DETAIL AND COLOR!
		165	FENTON 7" MARI. ILLINOIS SOLDIER & SAILOR PLATE. ANOTHER BEAUTY!!!
		166	Fenton 7" mari. Lions plate. Iridised on back only!
		167	Scarce Fenton green Holly compote.
		168	Fenton vaseline Holly compote. Scarce.
		169	Fenton powder blue Holly compote
		170	Fenton 5" mari. on Moonstone Holly Hat
		171	Fenton 3" mari. Water Lily ruffled vase. Scarce.



172	Fenton 7" purple Diamond Rib vase.	209	Nwood IG Round Bushel Basket.
173	Mburg 10" purple Grape Leaves bowl. Very hard to find!!!	210	Nwood AO Round Bushel Basket.
174	MBURG ELEC. GREEN HOBSTAR & FEATHER GIANT ROSEBOWL W/TREMENDOUS MULTICOLOR IRIDESCENCE. I ONLY REMEMBER ONE BETTER & IT SOLD FOR WELL OVER \$20,000! TOES ARE PERFECT!!!	211	Hmmmmmm What could this be????
175	MBURG PURPLE OHIO STAR VASE. VERY SCARCE. ALWAYS DESIREABLE.	212	Nwood lavender Round Bushel Basket
176	Mburg GREEN Seacoast pin tray. Great detail and color. Perfect!	213	Nwood purple Round Bushel Basket
177	Mburg PURPLE Seacoast pin tray. Perfect!	214	Nwood mari. Round Bushel Basket
178	Mburg PASTEL MARI. Seacoast pin tray. Perfect	215	Nwood green 8 sided Bushel Basket
179	Mburg. GREEN Sunflower pin tray. Very nice. Perfect!	216	Nwood white 8 sided Bushel Basket
180	Mburg PURPLE Sunflower pin tray. One of the best. Perfect.	217	Nwood mari. Daisy & Plume footed rosebowl
181	Mburg PASTEL MARI. Sunflower pin tray. Perfect. All of these pin trays are very desirable, in great condition.	218	NWOOD AO FINE CUT & ROSES ROSEBOWL. LOTS OF OPAL. VERY HARD TO FIND!
182	Mburg purple Elks paperweight. Lacks color but Perfect!!!	219	Nwood elec. purple Fine Cut & Roses rosebowl. Super example!!
183	Mburg 9" purple Nesting Swans ruffled bowl	220	Nwood dark IB Fine Cut & Roses rosebowl Really odd color. Almost a smokey ice blue.
184	Mburg 9" blasting pastel mari. Nesting Swans ruffled bowl.	221	Nwood IB Fine Cut & Roses rosebowl.
185	Mburg. 7" green Little Stars ruffled bowl. Scarce.	222	Nwood mari. Diamond Points basket. Very hard to find. Very even color.
186	Mburg. 9" mari. Rays & Ribbons ruffled bowl.	223	Nwood AO Dandelion mug Nice.
187	Mburg. 10" mari. Peacock at Urn MIC Bowl.	224	Nwood AO Poppy pickle dish. Always in demand.
188	Mburg 9" radium purple Zig Zag ICS bowl. Very scarce.	225	Nwood AO Leaf & Beads rosebowl.
189	Mburg 8 1/2" radium green Trout & Fly ICS bowl. Beautiful.	226	Nwood AO Drapery rosebowl
190	Mburg 9" radium purple Fleur-de-lys dome ftd. bowl. Feet look ok!	227	Nwood AO Daisy & Drape flared vase.
191	MBURG 7" RADIUM PURPLE COURTHOUSE ICS BOWL. REAL DEEP SHARP PRESSING. TREMENDOUS DETAIL!!	228	Nwood white Daisy & Drape vase.
192	Mburg 6" radium green Cosmos ICS bowl	229	Cambridge mari. Inverted Strawberry spittoon. Nice color. Very cute item!
193	Mburg 10" radium green Peacock at Urn ruffled bowl. No bee, no beads.	230	Dugan dark mari. Formal hat pin holder. Great color!!
194	Mburg 10" radium purple Many Stars ruffled bowl. Getting very hard to find. Great example!	231	Dugan purple Fisherman's mug.
195	Mburg dark mari. Hobnail Swirl spittoon. Scarce!	232	Dugan dark mari. Fisherman's mug. Scarce.
196	Mburg radium purple Hobnail spittoon. Very Nice.	233	Dugan white Constellation compote.
197	Nwood green Wide Panel epergne. Always desirable. Great item!!	234	IMPERIAL BLASTING ELEC. AMBER CHRYSANTHEMUM CHOP PLATE. OUTSTANDING IS ALL YOU CAN SAY!!! SIGNED NU ART
198	NWOOD IG G & C CENTERPIECE BOWL. POINTS IN. SUPER FROSTY.	235	IMPERIAL 10" ELEC. AMBER HOMESTEAD CHOP PLATE. SIGNED NU ART. A SISTER PLATE TO THE CHRYSANTHEMUM. WONDERFUL!!!
199	Nwood elec. purple G & C Banana boat. Super!	236	IMPERIAL ELEC. AMBER 10" HATTIE CHOP PLATE. WOW!!!!!!
200	Nwood green Singing Birds 7 pc. water set. Scarce.	237	Imperial 10" elec. purple Heavy Grape chop plate. Haven't sold one of these in quite a while.
201	Nwood purple Dandelion 7 pc. water set. Hardly ever see a complete set for sale. Nice!!	238	Imperial elec. purple Fashion 7 pc. water set.
202	Nwood purple Oriental Poppy 7 pc. water set. An other hard to find complete set.	239	Imperial elec. purple Grape 11 pc. punch set. Well matched. A great set.
203	Nwood dark mari. Acorn Burr 7 pc. water set. What a great pattern.	240	IMPERIAL 10" ELEC. PURPLE HOMESTEAD CHOP PLATE. TREMENDOUS COLOR. HAVEN'T SOLD ONE IN QUITE A WHILE!!!
204	Nwood purple G & C 7 pc. water set w/nice elec. highlights.	241	RARE IMPERIAL SMOKE LOGANBERRY VASE. A GREAT PASTEL ITEM!
205	Nwood 13" IB Tree Trunk midsize vase. Very Scarce. Nice & Frosty.	242	Imperial elec. purple Octagon midsize pitcher. Rare size, fantastic color!
206	NWOOD SAPPHIRE ROUND BUSHEL BASKET. VERY RARE COLOR!!!	243	Imperial elec. purple Octagon tumbler.
207	Nwood white Round Bushel Basket	244	Imperial elec. purple Open Rose complete table set. Well matched. Very hard to find as a set.
208	Nwood blue opal Round Bushel Basket. Not Carnival	245	Imperial purple Fashion breakfast creamer & sugar. Nice electric highlights.
		246	Imperial purple Colonial Lady vase. Nice!
		247	IMPERIAL ELEC. PURPLE OCTOGON 8 PC. WINE SET. VERY RARE TO FIND COMPLETE W/THIS KIND OF COLOR!!
		248	(2) 13" smoke Ripple vases. 2 x \$



- 249 Imperial 8" mari. Shell & Sand ruffled bowl.
- 250 Imperial 9" purple Cobblestone ruffled bowl. Nice electric highlights.
- 251 Imperial smoke Poinsettia milk pitcher.
- 252 Imperial mari. Windmill midsize pitcher.
- 253 Imperial Helios Green Hattie rosebowl. Very Scarce lacks color.
- 254 Imperial mari. Thin Rib & Drape 5" vase.
- 255 Imperial mari. Octagon wine
- 256 NWOOD DARK IB CORN VASE. GREAT PASTEL IRID. ON A RARE VASE.
- 257 Nwood green Corn vase w/stalk bottom. Scarce
- 258 Nwood white Corn vase w/stalk bottom
- 259 Nwood mari. Corn vase w/plain base
- 260 Nwood lime green Corn vase w/plain base
- 261 Nwood purple G & C sweetmeat. Very nice!
- 262 Nwood 12" sapphire Thin Rib vase.
- 263 Nwood 6" green Squatty Leaf Columns
- 264 Nwood 7" elec. blue Tree Trunk squatty vase. Outstanding!!!
- 265 Nwood 8" IG Drapery Vase
- 266 Nwood DARK MARI. TOWN PUMP. VERY RARE. ALWAYS DESIREABLE.
- 267 Nwood purple Town Pump. Very nice!!
- 268 Nwood green large size Tornado vase. Great color and shape!
- 269 NWOOD 9" PASTEL AO THREE FRUITS STIPPLED PLATE. OUTSTANDING MULTICOLOR SATIN IRIDESCENCE. NO WEAR TO THE FRUIT. EXCEPTIONAL PLATE!!
- 270 RARE NWOOD 9" SAPPHIRE THREE FRUITS STIP. PLATE. ANOTHER TOP SHELF PLATE!!
- 271 OUTSTANDING NWOOD 9" MARI. THREE FRUITS STIPPLED PLATE. WAIT TILL YOU SEE THIS ONE!!!!
- 272 Nwood 9" elec. blue Three Fruits Stippled plate. WOW!
- 273 Nwood 9" elec. purple Three Fruits stippled plate. Brilliant blue and yellow iridescence. A KEEPER!!!
- 274 Nwood 9" green Strawberry plate w/BW back. Scarce.
- 275 RARE NWOOD 9" WHITE PEACOCKS PLATE W/ BW BACK. NICE COLOR ON A RARE PLATE.
- 276 NWOOD 9" IB PEACOCKS PLATE W/RIB BACK. TREMENDOUS SATIN IRIDESCENCE. BEAUTIFUL
- 277 Nwood 9" IG Peacocks plate w/plain back. Super satiny.
- 278 BLASTING ELEC. BLUE NWOOD 9" PEACOCKS PLATE. WONDERFUL COLOR!
- 279 Nwood 9" green Peacocks plate. Very nice color.
- 280 Nwood 9" elec. purple Peacocks plate. Wonderful elec. irid.
- 281 Nwood 9" blue Peacocks plate. Has a neat purple/mauve iridescence!
- 282 Nwood 9" Ren. blue Peacocks stippled plate. Scarce.
- 283 Nwood 9" mari. Peacocks stippled plate. Nice radium iridescence.
- 284 Nwood 8 1/2" AO Peacocks ruffled bowl. Nice yellow multicolor iridescence.
- 285 Nwood 8 1/2" purple Peacocks ruffled bowl.
- 286 Nwood 8 1/2" emerald green Peacocks ruffled bowl. Off the charts color!!
- 287 Rare Nwood 10" horehound Peacock at Urn MIC bowl. Extremely rare w/outstanding color.
- 288 Nwood 10" IG Peacock at Urn MIC bowl. Nice!!
- 289 Nwood 10" IB Peacock at Urn MIC bowl. Nice!
- 290 Nwood 10" dark mari. Peacock at Urn MIC bowl. Great color!
- 291 Nwood 10" elec purple Peacock at Urn MIC bowl. One of the nicest purple ones we have ever sold!!
- 292 NWOOD 8 1/2" ICE GREEN STRAWBERRY STIP. RUFFLED BOWL. GREAT PASTEL IRIDESCENCE.
- 293 Nwood 8 1/2" IG G & C spatula footed bowl. Nice and frosty!
- 294 Nwood 8" purple Good Luck ruffled bowl w/BW back.
- 295 Nwood 8 1/2" mari. Good Luck stippled bowl.
- 296 Nwood 8 1/2" elec. blue Good Luck stippled PCE bowl. Outstanding!
- 297 Nwood 8 1/2" dark mari. Good Luck PCE bowl.
- 298 NWOOD 8 1/2" AO G & C STIPPLED PCE BOWL. TREMENDOUS PASTEL IRIDESCENCE. A WONDERFUL BOWL!!!!
- 299 Nwood 8 1/2" blue G & C stippled PCE bowl Nice electric highlights on a scarce bowl.
- 300 Nwood 8 1/2" green Nippon ruffled bowl. Scarce.
- 301 Nwood 9" elec. purple G & C plate. Wonderful!
- 302 Nwood 9" purple Good Luck plate.
- 303 Nwood 9" mari. Greek Key plate. Very scarce. Wonderful color!
- 304 Nwood 9" elec. purple Heart & Flower plate. One of the best!
- 305 NWOOD 9" DARK IB HEART & FLOWER PLATE. REALLY FROSTY IRIDESCENCE ON A WONDERFUL PLATE!
- 306 WONDERFUL NWOOD 9" SCREAMING MARI. HEARTS & FLOWERS PLATE. I LIKE IT!!!!
- 307 RARE FENTON 9" WHITE PERSIAN MEDALLION PLATE. NOT MANY OF THESE AROUND. ALWAYS SOUGHT AFTER!
- 308 Fenton 9" pumpkin mari. Heart & Vine Spector's Plate. One of the darkest ones we've seen.
- 309 Fenton 9" purple Captive Rose plate. Scarce.
- 310 Fenton 9" blue Captive Rose plate. Nice color. Scarce!
- 311 Fenton 9" mari. Stag & Holly footed plate. Scarce.
- 312 Fenton 9" mari. Peacock at Urn plate.
- 313 Fenton 9" blue Peacock at Urn plate.
- 314 Fenton 9" green Autumn Acorn plate. Very hard to find!!
- 315 Fenton 10" purple Rustic vase.
- 316 Fenton 10" blue Rustic vase w/CRE
- 317 Imperial 10" mari. Acanthus chop plate.
- 318 OUTSTANDING IMPERIAL 9" SMOKE SHELL & SAND FLAT PLATE. WONDERFUL BLUE IRIDESCENCE!!!
- 319 Dugan 9" purple Round Up plate. Very scarce!
- 320 Scarce Dugan 9" blue Apple Blossom Twigs plate.
- 321 Dugan 12" elec. purple Big Basketweave vase.
- 322 Dugan 5" elec. purple Lined Lattice squatty vase. Rare size.
- 323 Fenton 9" mari. Leaf Chain plate.
- 324 Fenton 9" forest green Leaf Chain plate. Odd base glass color.
- 325 HANG ON TO YOUR SHORTS!! FENTON 9" ELEC. GREEN THISTLE PLATE. BUY IT AND DON'T WORRY ABOUT IT!!! WOW!!!! WOW!!!!!!
- 326 Fenton 9" dark mari. Concord plate. Scarce.
- 327 Fenton 9" purple Concord plate. Silvery.



328 Fenton 9" mari. Holly plate.  
 329 Fenton 9" mari. Coral plate. Scarce  
 330 Fenton 9" mari. Peacock & Grape plate.  
 331 Fenton 9" green Lotus & Grape plate. Very nice color. Scarce  
 332 Fenton 9" purple Lotus & Grape plate. Nice multicolor iridescence. Scarce.  
 333 Fenton 9" blue Lotus & Grape plate. Scarce plate.  
 334 Fenton 8" green Concord 3/1 edge bowl. Scarce.  
 335 RARE FENTON 9" ELEC. GREEN DRAGON & STRAWBERRY DEEP ROUND BOWL. HAS SUPER IRIDESCENCE.  
 336 Fenton 9" mari. Dragon & Strawberry footed ruffled bowl.  
 337 Imperial Grape 8" elec. purple plate.  
 338 Imperial 8" elec. purple Scroll Embossed plate. Bright brilliant iridescence.  
 339 IMPERIAL 9" AMBER GRAPE FLAT PLATE. SUPER BLUE IRIDESCENCE ON AN EXTREMELY HARD TO FIND PLATE. Tougher than you may think!  
 340 Imperial 9" amber Open Rose plate.  
 341 Imperial 9" pastel mari. Open Rose plate.  
 342 Australian 9" black amy. Swan bowl. Nice radium iridescence. Scarce.  
 343 Sowerby mari. Diving Dolphins rosebowl w/Scroll Embossed interior. Scarce.  
 344 Fenton 6" blue Persian Medallion tri corner plate.  
 345 Fenton mari. Four Kittens cup/saucer.  
 346 Fenton white Pond Lily 2-handled bon bon  
 347 NWOOD PURPLE LOTUS LAND 2-HANDLE BON BON. EXTREMELY RARE. I THINK THIS IS THE FIRST ONE WE HAVE EVER SOLD!!!  
 348 Mari. Daisy Cut bell  
 349 Nwood 6" purple G & C handgrip plate.  
 350 Nwood 7" purple Wild Strawberry handgrip plate.  
 351 Nwood 6" purple Dreibus Parfait plate. Nice multicolor iridescence.  
 352 Fenton 6" blue Pinecone plate.  
 353 Fenton 6" blue Cherry Chain plate. Scarce.  
 354 Dugan 6" purple Persian Garden plate. Has nice electric highlights.  
 355 Dugan 6" elec. purple Wishbone & Spades plate.  
 356 Dugan 6" PO Wishbone & Spades plate.  
 357 Imperial Grape 6" mari. plate.  
 358 European emerald green 9" Four Flowers plate. Scarce.  
 359 European 8" teal Four Flowers deep round bowl. Very odd color.  
 360 Fenton green G & C low fruit bowl w/Persian Medallion interior.  
 361 Fenton green Orange Tree loving cup.  
 362 Fenton dark mari. Orange Tree loving cup.  
 363 Fenton frosty white Orange Tree loving cup  
 364 Brockwitz mari. Diamond Cut Shields water pitcher  
 365 Brockwitz mari. Diamond Cut Shields tumbler  
 366 HOACGA 1984 Red footed bowl.  
 367 HOACGA 1984 red fernery  
 368 HOACGA 1978 red Corn vase.  
 369 HOACGA 1979 red Good Luck loving cup  
 370 HOACGA 1983 mari. on milk glass Good Luck loving cup.  
 371 Fenton red Apple Tree tumbler  
 372 1976 HOACGA Good Luck 8 pc. whiskey decanter set. Rare!

373 (12) HOACGA Good Luck miniature mugs in assorted colors. Choice.  
 374 1970 ACGA green Indianapolis 500 spooner  
 375 1982 ACGA Peach Opal Seacoast spittoon  
 376 (2)1981 ICGA PO Frolicking Bears spittoons. 2 x \$  
 377 1982 ICGA elec. red. Frolicking Bears spittoon.

***Thanks for participating in today's auction!  
 Still booking for fall 2009 and early 2010.***

***Call now to ensure you get the date of your choice or the convention you want!***

***Our next auction(s) will be our Memorial Weekend Extravaganza! 6 auctions in 3 days!***

**Tentative Schedule for Memorial Weekend**

***Thursday May 21st 10:00am  
 Fenton Glass Auction- Speaight collection  
 Over 800 lots!***

***Thursday May 21st 10:30 am  
 Collectibles Auction***

***Friday May 22nd 9:30 am  
 Fenton Glass Auction- Gilbert collection  
 Over 600 lots!***

***Friday May 22nd 10:30 am  
 Antiques and Art glass Auction  
 400+ lots***

***Friday May 22nd 5:00pm  
 Hog Roast & Chicken BBQ under the BIG tent!  
 Don't forget Mom's homemade potato salad!***

***Friday May 22nd 6:30 pm  
 RS Prussia Auction- Patterson Collection  
 250+ lot***

***Saturday May 23rd 9:30 am  
 Carnival Glass Auction- Poucher Collection of water sets and others. 400 Lots!***

***Watch our websites for more information.  
[www.jimwrodauction.com](http://www.jimwrodauction.com)  
 or  
[www.auctionzip.com](http://www.auctionzip.com) ID#11511***

***Have a GREAT Summer!***



