

- 1 Nwood purple 7 pc Peacock at Urn Ice cream set. Nice and very hard to find a complete set!
- 2 Mari Propeller compote
- 3 Dugan purple Holly Berry Gravy
- 4 Dugan mari Wreathed Cherries Banana Boat
- 5 Imp mari Grape tidbit tray
- 6 Fenton BLUE Mikado compote. Has very nice color!
- 7 Fenton 7" mari Horse head plate. Scarce
- 8 Fenton 7" mari Pinecone plate
- 9 RARE NWOOD GREEN ACORN BURRS 6 PC PUNCH SET VERY HARD TO FIND AND THIS IS A PRETTY ONE!
- 10 Dugan purple Starfish compote
- 11 Nwood green Fine Cut & Roses rosebowl. Nice color
- 12 Vaseline Concave Diamonds Guest set tumbler. Scarce tumbler if needed
- 13 Fenton mari Leaf Tiers tumbler
- 14 Mburg? mari White Oak tumbler
- 15 Fenton mari 9" Holly Plate
- 16 Fenton 9" Blue G&C spatula ft'd plate.
- 17 Nwood purple G&C covered compote. scarce
- 18 Nwood 9" purple G&C PCE bowl.
- 19 4 Fenton blue Orange Tree goblets. 4 x money
- 20 Contemporary Westmoreland red plate
- 21 Imp. 9" green Grape plate. Scarce
- 22 RARE BLASTING MARI 8" BLACKBERRY SPRAY OPEN EDGE PLATE. THIS IS THE BEST ONE OF THESE I HAVE EVER SEEN. WHAT GREAT DARK IRID!.WOW!
- 23 Fenton 9" purple Heart & Vine plate. Scarce
- 24 Fenton 9" blue Peacock & Grape bowl.
- 25 Dugan 9" blue Round Up plate. Nice
- 26 Mari Liberty bell bank. large
- 27 Nwood 9" purple 3 Fruits plate
- 28 N 9" purple G&C plate
- 29 Scarce SMOKE Waffle Block punch top. Where's the base?!
- 30 Nwood white Corn Vase. Frosty
- 31 Dugan 7" white Grapevine Lattice ruffle bowl
- 32 Fenton blue Orange tree punch base. crack on rim
- 33 Fenton BLUE Orange Tree 8pc Punch set. Nice color! well matched
- 34 3pc misc mari. Tree Bark plate, bowl, whiskey bottle. 1 money
- 35 Mari Kittens cup.
- 36 RARE FENTON 9" GREEN PETER RABBIT RUFFLED BOWL. SUPER RARE HAVE NOT SOLD ONE OF THESE IN A LONG TIME! HAS A GREAT CRYSTAL CLEAR GREEN BASE AND NICE COLOR! BUY IT !!
- 37 Twins mari 8pc punch set
- 38 Fenton blue 9" Stag & Holly ft'd deep bowl. nice
- 39 Imperial grape mari wine decanter
- 40 Contemporary smoke Grape 7pc water set
- 41 Dugan Mari Brooklyn Bridge bowl. Nice
- 42 2 Contemp. toothpicks. 1 money
- 43 2 pcs. CG, 1 money. Green Nwood & mari Pineapple creamer
- 44 Imperial mari centerpiece bowl and 16" under tray
- 45 Nwood purple G&C creamer
- 46 Fenton blue Vintage ferner
- 47 Imperial mari Lustre Rose fruit bowl
- 48 Mburg purple 9" Rays & Ribbons CRE bowl. NICE!
- 49 4 Mburg 6" purple Blackberry Wreath 3-1 edge bowl 4 x money.
- 50 Mburg crystal 8" Country Kitchen bowl
- 51 Mburg Crystal 9" Country Kitchen bowl
- 52 Mburg Crystal Ohio Star tumbler
- 53 Mburg Crystal Hobstar & Feather 9" Deep bowl
- 54 Mburg Crystal Hobstar & Feather compote
- 55 Millersburg crystal Potpourri compote
- 56 2 Mburg Crystal Hobstar & Feather banana boats. 2 x money
- 57 10 Mburg crystal Hobstar& Feather punch cups.
- 58 9 Mburg crystal Ohio Star punch cups 1 money
- 59 Mburg crystal Ohio Star Punch top. Scarce
- 60 Mburg 9" mari Rays & Ribbons ICS bowl.
- 61 Mburg 6" purple Peacock at Urn ICS bowl. No Bee No Beads
- 62 Mburg 5" purple Blackberry Wreath ICS bowl.
- 63 Mburg 6" radium mari Grape Wreath ruffled bowl.
- 64 MBURG 9" BLUE BLACKBERRY WREATH RUFFLED BOWL. RARE AND NICE!
- 65 RARE MBURG RADIUM GREEN HOBNAIL SPITTOON. TREMENDOUS COLOR! NOT MANY AROUND.. NONE FOR SALE!
- 66 GUESS WHAT.... another MBURG RADIUM GREEN HOBNAIL SPITTOON!! THESE WERE FOUND TOGETHER IN A STORE. . This one does have a SMALL amount of peeling on rim... SO WHAT!
- 67 Mburg mari Peacock Tail Variant compote
- 68 Mburg 9" radium green Ray & Ribbons ruffled bowl. super!
- 69 Mburg 8" mari Holly Sprig vari. ruffled bowl
- 70 Mburg 6" radium purple Grape Wreath vari CRE bowl
- 71 Mburg purple Boutonniere compote
- 72 MBURG RADIUM PURPLE POPPY SLAVER COMPOTE. KILLER IRID ON A RARE SALVER COMPOTE!
- 73 Dugan purple Beaded Shell mug
- 74 Dugan mari Harvest Flower tumbler
- 75 Dugan BLUE Maple leaf tumbler. Old one
- 76 3 Dugan Wishbone & Spades 6" ruffled bowls. 3 x
- 77 Imp Grape 5" elec purple deep bowl
- 78 Imp elec purple Scroll Embossed lg compote
- 79 Imp 5" mari Thin Rib & Drape vase
- 80 Imp 5" mari Morning glory vase
- 81 Imp 6" mari Morning glory vase
- 82 RED Fishnet & Roses vase. Very hard to find. Haven't sold one in years!
- 83 RED Fishnet & Roses vase. Not irid
- 84 Fenton 6" BLUE Waterlily ft'd sauce.
- 85 FENTON GREEN PEACOCK TAIL SUGAR BOWL. VERY RARE
- 86 Nwood Persian blue stretch sherbert
- 87 Nwood AO Daisy & Drape vase. Scarce
- 88 Nwood IB Leaf & Beads rosebowl. hard to find!
- 89 Nwood mari Harvest flower compote
- 90 Nwood AO Hearts & Flowers compote. Very nice and always in demand!
- 91 Nwood 6" elec blue Peacock at Urn Stippled ICS bowl

- 92 Nwood 7" purple G&C card tray
- 93 Nwood 7" mari G&C card tray. nice dark color
- 94a N-wood green G&C hatpin holder
- 94b Fenton blue Persian Medallion lg. compote.
- 94 Nwood 8" mari Poppy Show bowl. Very nice pastel colors!
- 95 Nwood 6" purple Thin Rib vase
- 96 Nwood mari G&C butter dish
- 97 Nwood white 8 sided Bushel basket.
- 98 Nwood 9" green Strawberry plate
- 99 Fenton 8" WHITE Open Edge 3 row hat. 2 sides up Very RARE! and frosty!
- 100 Fenton 5" RED Open Edge hat
- 101 Fenton 5" purple Open Edge hat
- 102 Fenton 5" IB Open Edge hat. RARE
- 103 Fenton 5" AQUA Open Edge hat
- 104 Fenton 5" VASELINE Open Edge hat
- 105 Fenton 6" IG Open Edge hat. RARE
- 106 Fenton 10" blue Knotted Beads vase w/CRE
- 107 West. MMG Corinth JIP vase
- 108 Mari Daisy cut bell. Scarce
- 109 Crystal Daisy Cut bell.
- 110 Amberina Daisy cut bell. Not CG
- 111 Fenton green Persian Medallion Bon bon
- 112 Fenton 6" mari Leaf Chain plate
- 113 Fenton mari Persian med & Stippled rays plates. 1 money
- 114 mari Kittens 2 sided plate
- 115 Fenton RED 5" Holly Hat
- 116 Imperial 6" RED wide panel bowl
- 117 Fenton 9" blue Heart & Vine plate
- 118a Dugan 10" white Big Basketweave vase
- 118b Dugan White Constellation compote
- 118 Dugan 8" white Fanciful ICS bowl
- 119 Dugan 8" PO Double Stem Rose ICS bowl
- 120 Dugan 8" white Double stem Rose bowl
- 121 Dugan 7" PO Fishscale & Beads CRE plate
- 122 DUAGN 9" ELEC PURPLE CHERRIES RUFFLED BOWL. SUPER COLOR!
- 123 Dugan 6" mari Persian Gardens plate and 6" white Grapevine Lattice plate. 1 money
- 124 Imperial elec purple Shell & Sand ruffled bowl. WOW!!
- 125 Imp Jewels purple 5" vase w iron cross mark
- 126 Imp. 4" elec purple Morning Glory vase! HOT LOT!
- 127 Imp 5" elec purple Morning Glory vase
- 128 Imp. mari Colonial Lady vase. Scarce!
- 129 PO Pinched swirl, twisted vase
- 130 Imp 12" SMOKE GOTHIC ARCHES VASE. SUPER COLOR! RARE VASE
- 131 Imp elec purple Grape water carafe.
- 132 Imp 10" amber Ripple vase. Scarce color
- 133 Celeste blue Concave Diamonds 13 pc water set. pitcher/6tumblers/6coasters.
- 134 Pair celeste blue Florentine candlesticks
- 135 Mburg 10" purple Hanging Cherries ICS bowl
- 136 Mburg 10" purple Rosalind ruffled bowl Teeny nick on edge.
- 137 Mburg 10" green Nesting Swans bowl
- 138 Mburg 10" purple Whirling Leaves bowl Chip on back.
- 139 Mburg Riverside Crystal Wild Rose oil lamp
- 140 Mburg elec rad purple Poppy compote Outstanding! Does have one teeny little flick on edge. Who cares?
- 141 Mburg 10" rad green Peacock At Urn MIC bowl Small bruise on edge.
- 142 Mburg 9" mari Primrose bowl
- 143 Mburg rad purple Holly Sprig nappy
- 144 Mburg purple Leaf & Little Flowers sherbert Nice rad color!
- 145 Mburg purple Hobnail Swirl spittoon Crack in base.
- 146 Mburg 5" purple Peacock At Urn ICS bowl
- 147 Mburg mari Hobnail creamer Very rare! Has a check in handle.
- 148 Mburg olive green Night Stars bonbon Very scarce!
- 149 Mburg green Holly Sprig bonbon
- 150 Mburg purple 9" Holly Whirl bowl
- 151 Mburg mari Boutonniere compote
- 152 Mburg mari Multi Fruit & Flower punch base
- 153 Mburg 10" rad green Strawberry Wreath CRE bowl Very nice!
- 154 Mburg 10" green Seaweed 3-1 edge bowl Very rare color!
- 155 Mburg 8" mari Trout & Fly 3-1 edge bowl
- 156 Mburg 7" green Little Stars ruffled bowl Nice!
- 157 Mburg mari Hobnail rosebowl Crack in base.
- 158 Mburg purple Diamonds water pitcher Nice!
- 159 Mburg purple Diamonds tumbler Chip on edge.
- 160 Mburg mari Hobstar & Feather punch base & [4] cups
- 161 Mburg Diamonds butterdish w/ ruby stain Chip on edge. Very RARE! Pictured McGee book
- 162 Dugan 8" mari Brooklyn Bridge bowl
- 163 Fenton 10" blue Stag & Holly ftd ICS bowl
- 164 Fenton 8" blue Two Flowers deep round bowl
- 165 Nwood 8" mari Peacocks ruffled bowl
- 166 Nwood 8" mari Good Luck ruffled bowl Epoxy on two points.
- 167 Fenton 9" blue Peacock At Urn plate
- 168 Blue & Red Contemporary Elks paperweights 1x\$\$
- 169 Dugan purple 8pc Many Fruits punch set Nice!
- 170 Fenton dark mari Wreath of Roses 8pc punch set w/ Vintage int
- 171 Imp mari 474 8pc punch set
- 172 Imp purple Broken Arches 11pc punch set
- 173 Dugan purple Wreath Cherry banana boat
- 174 Fenton green Cherry Circles bonbon
- 175 Fenton 8" green Feather Serpent CRE bowl
- 176 Fenton 8" mari Peacock & Grape ICS bowl
- 177 Fenton 8" blue Peacock At Urn ICS bowl
- 178 Fenton 8" blue Dragon & Lotus ICS bowl
- 179 Fenton mari Stream of Hearts compote
- 180 [5] Imp 5" elec purple Grape bowls 5x\$\$
- 181 Imp mari Octagon mid-size pitcher
- 182 Nwood 8" purple Strawberry ruffled bowl
- 183 Nwood mari Leaf & Beads rosebowl
- 184 Nwood 8" purple Rosette ftd bowl
- 185 Dugan 9" PO Cherries ruffled bowl
- 186 Dugan 8" purple Dogwood Spray ftd ruffled bowl

187	Dugan 7" PO Bells & Beads ruffled bowl	239	Mburg crystal 8" frosted Hobstar & Feather handgrip oval plate
188	Dugan 8" white Lattice & Points vase	240	MBURG CRYSTAL 14PC HOBSTAR & FEATHER PUNCH SET Massive piece of glass!
189	West MMG Smooth Rays bowl	241	[10] Mburg crystal Hobstar & Feather punch cups 1x\$\$
190	Robert Hanson green town pump & troth. signed	242	Mburg crystal Ohio Star TP
191	Cam green Inverted Feather cracker jar	243	Mburg Crystal 6" Ohio Star square dish
192	HOACGA 1982 IB Corn vase & HOACGA MMG 1983 Orange Tree loving cup [Choice]	244	Mburg Crystal frosted Hobstar & Feather 8" oval
193	NWOOD PURPLE QUILL 6PC WATER SET Very rare! Nice looking!	245	2-Mburg Crystal 9" Hobstar & Feather relish
194	Mburg 8" rad purple Strawberry Wreath Variant ICS bowl - Super!	246	Mburg Crystal 9" Country Kitchen plate
195	Mburg 6" mari Blackberry wreath round bowl	247	Mburg Crystal Ohio Star 7pc Lemonade set
196	Mburg 6" purple Blackberry Wreath ruffled bowl	248	Mburg Crystal 11" Country Kitchen Chop plate. RARE
197	Mburg 6" rad purple Grape Wreath Variant ICS bowl	249	(6) Mburg Crystal Ohio Star Creamers. choice
198	Imp 5" elec purple Windmill deep round bowl	250	(2) Mburg Crystal Ohio Star Spooners. choice
199	Imp 6" elec purple Embossed Scroll bowl	251	Mburg Crystal Ohio Star cov. sugar bowl
200	Imp green Grape cup & saucer	252	Mburg Crystal Ohio Star Cruet
201	Imp mari Flute TP	253	(2) Mburg Crystal Ohio Star vases. 2 x money
202	Imp mari Hobstar Band compote	254	Mburg Crystal Ohio Star butter dish
203	Imp 9" MMG Smooth Panels vase	255	Mburg Crystal 9" Hobstar & Feather Pickle dish
204	Imp 9" mari Grape plate	256	RARE Mburg Crystal Venetian turned down vase.
205	Dugan 9" PO Six Petals CRE plate	257	RARE Mburg Crystal Venetian flared vase
206	Dugan 6" purple Bells & Beads ruffled bowl	258	(3) Mburg Crystal Ohio Star punch cups. 1\$
207	Dugan purple Fishnet epergne Very scarce!	259	RARE MBURG CRYSTAL OHIO STAR PUNCH BOWL AND BASE WHAT A GREAT PATTERN! GET IT WHILE YOU CAN!
208	Nwood 7" purple Tree Trunk squatty vase	260	(3) Mburg Crystal Ohio Star 6" compotes. choice
209	Nwood 11" blue Thin Rib vase Very nice!	261	Mburg Crystal Ohio Star Water carafe
210	Nwood pastel mari Petals compote	262	Mburg Crystal Ohio Star flared compote
211	Nwood elec blue Peacock At Fountain butterdish	263	Mburg Crystal Ohio Star 4pc berry set
212	Nwood 8" purple Fruits & Flowers spat ftd bowl	264	Mburg Crystal sugar bowl. no lid
213	Nwood 8" elec purple G&C bowl	265	Mburg Crystal country kitchen butter lid
214	Nwood 6" purple G&C handgrip plate	266	Mburg Crystal Ohio Star butter lid
215	Nwood 8" purple G&C handgrip plate	267	Mburg Crystal frosted Hobstar & Feather sugar lid RARE part if needed
216	Nwood 8" green G&C handgrip plate	268	Mburg Crystal frosted Hobstar & Feather spooner
217	Nwood 8" mari G&C card tray	269	Mburg French opal 5" country kitchen square bowl
218	Nwood 9" purple Strawberry plate	270	Mburg French opal Country Kitchen 5" ruffled bowl
219	Fenton 11" green Plume Panels vase	271	Mburg Crystal 9" Country Kitchen ruffled bowl
220	Fenton 9" blue Orange Tree plate	272	Mburg Crystal Potpourri salver compote
221	Fenton 9" blue Heart & Vine plate	273	Mburg Crystal frosted Potpourri compote
222	Fenton 5" green Blackberry Spray OE hat	274	(2) Mburg Crystal Potpourri compotes. choice
223	Fenton green Flowers rosebowl	275	Mburg Crystal frosted Hobstar & Feather 10" ICS
224	Fenton 9" amber Dragon & Lotus ruffled bowl	276	Mburg Crystal frosted Hobstar & Feather 9" bowl
225	Fenton green Horsehead JIP ftd bowl Very scarce!	277	Mburg Crystal frosted Hobstar & Feather 9" square tray. RARE
226	[2] Mburg 9" crystal Hobstar & Feather ICS bowls 2x\$\$	278	Mburg Crystal frosted Hobstar & Feather 9" relish
227	Mburg 10" crystal Hobstar & Feather ICS bowl	279	Mburg Crystal (pink) frosted Hobstar & Feather water pitcher. Really odd color
228	Mburg crystal Ohio Star compote	280	Mburg Crystal frosted Hobstar & Feather banana boat
229	[2] Mburg crystal Hobstar & Feather sherberts 2x\$\$	281	(4) Mburg Crystal frosted Hobstar & Feather 5" berry bowls. 1 money
230	Mburg crystal Ohio Star TP	282	Mburg crystal Hobstar & Feather 8" deep bowl
231	Mburg 5" crystal Ohio Star plate	283	(2) crystal Hobstar & Feather banana boats 2 x money
232	Mburg lavender crystal Hobstar & Feather "club" dish	284	Mburg crystal Hobstar & Feather Lemonade pitcher. RARE size!
233	[2] Mburg crystal frosted Hobstar & Feather "Spade" dishes [Choice]	285	Mburg lavender crystal Hobstar & Feather cracker jar. RARE
234	Mburg crystal frosted Hobstar & Feather "Heart" dish		
235	[3] Mburg crystal frosted Hobstar & Feather "Diamond" dish [Choice]		
236	Mburg 6" frosted Hobstar & Feather olive dish		
237	Mburg 5" Hobstar & Feather tri-cornered plate		
238	Mburg 5" frosted Hobstar & Feather tri-cornered plate		

- 286 Mburg crystal Hobstar & Feather cracker jar
287 Mburg crystal Hobstar & Feather compote
288 Mburg crystal Hobstar & Feather 9" ICS bowl
289 Mburg crystal Hobstar & Feather punch base
290 Mburg crystal Feather & Heart water pitcher
291 Camb. crystal Inverted feather cruet
292 Mburg mari. Feather & Heart tumbler
293 Mburg mari. Feather & Heart water pitcher. nice.
294 Mburg radium purple Ohio Star Vase. Does have chip at one point. Scarce.
295 Mburg radium mari. Ohio Star vase. Tremendous radium iri. but does have chip on base.
296 MBURG GREEN ROSE COLUMNS VASE. VERY NICE. HARDLY EVER SOLD.
297 Mburg green Tracery square bon bon. Small flakes on edge
298 Mburg 9" radium purple Hanging Cherries 3/1 edge bowl. Flake on back of point.
299 Mburg 6" radium mari. Holly Sprig tri-corner bowl.
300 Mburg radium green Peacock Tail Vt. compote
301 Mburg 9" green Rosalind ruffled bowl. Small chip on edge.
302 Mburg 8" radium mari. Holly Whirl Vt. 3/1 edge bowl.
303 Mburg 7" green Little Stars ICS bowl
304 Mburg radium mari. Poppy compote. Very scarce color. Nice!
305 MBURG 10" PURPLE STRAWBERRY WREATH BANANA BOAT. VERY HARD SHAPE TO FIND.
306 Mburg 8" radium green Strawberry Wreath 3/1 edge bowl.
307 Mburg 6" mari. Hanging Cherries ruffled bowl
308 Mburg 7" green Hanging Cherries ICS bowl
309 MBURG 10" RADIUM ELEC. PURPLE NESTING SWANS RUFFLED BOWL. BRIGHT BLUE IRID. ALL OVER. TINY FLICK ON ONE POINT JUST TO BE ACCURATE. WOW WOW WOW!!!
310 (2) Mburg green Multi Fruits punch cups. Choice.
311 Mburg 10" mari. Seaweed 3/1 edge bowl. Nice!
312 (3) mari. Geometric custard cups. 1 money
313 (2) Imperial mari. Sherberts. 1 money
314 Peach Opal beaded sherbert
315 Dugan Diamond lime green opal Swan marked
316 N-wood purple Ribbed Tornado Vase. Scarce
317 (4) N-wood white Wide Panel lilies. Choice.
318 Nwood 8" lime green Strawberry Stippled ruffled bowl. Epoxy on one point.
319 Nwood mari. 9" Heart & Flower plate. dark color.
320 Rare Nwood aqua Rose Show bowl. Cracked but only a couple known.
321 Nwood white Acorn Burr punch base & 5 cups.
322 Nwood white Memphis punch cup
323 (8) pieces asst'd marigold. Choice
324 Fenton mari. Kittens ruffled bowl
325 Fenton 6" mari. Butterfly & Berry vase
326 Fenton 7" blue Illusion ruffled bowl
327 Fenton 9" blue Heart & Vine plate
328 Fenton 8" mari. Peter Rabbit ruffled bowl. Nice pressing and color.
329 Fenton 9" elec. blue Peacock at Urn plate. Chip at 9:00 o'clock
330 Fenton purple 8" Ragged Robin 3/1 edge bowl
331 Fenton 6" mari. Sailboats plate. Great pressing.
332 Westmoreland PO Fruit Salad punch bowl. Top only, no base.
333 RARE DUGAN 10" PURPLE CHERRIES CHOP PLATE. FIRST ONE WE HAVE SEEN.
334 Mari 10" Cosmos Variant chop plate
335 MMG Lacy Dew Drop compote
336 Dugan purple Many Fruits punch base
337 Purple Leaf Swirl compote
338 Imp. Mari Compote. Pattern unknown to us.
339 Imp Green Poppy Show Vase. Scarce color
340 Honey Amber Palm Beach vase. Buff spot on base
341 Mari Persian Gardens 6" plate
342 2 pieces contemp. Elks. Plate / paperweight
343 Mari Cosmos mini oil lamp
344 IG mark smoke Homestead chop plate
345 Dugan 10" celeste blue Petal & Fan bowl Not CG
346 2 Dugan 10" celeste blue Cherries Chop plate. Not CG. 2 x money
347 Iron Cross mark teal 9" Imp Grape plate,
348 MARI paneled 14" vase
349 Fenton purple 7pc Paneled Dandelion Tankard set!
350 BO Palm beach butter top
351 Choice of 4 Blue Opal pieces. Rose show, Peacocks, and 2 -3 fruits bowls.
352 4 pcs Damage CG. 1 lot. 10" purple Peacock Urn MIC, IG Bushel basket, PO 6" 4 flowers plate, amber 7" acorn bowl.
353a Blue Wreath of Roses punch base
353b Mari Votive. Has a hole drilled in bottom , but very had to find!
353 3 Top O the Morning Hatpins. 3 x money.
354 MBURG MARI 10" VINTAGE ICS BOWL W/ HOBNAIL BACK VERY RARE!
355 MBURG 10" RADIUM PURPLE PEACOCK MIC BOWL SUPER RADIUM IRID. VERY HARD TO FIND
356 Mburg GREEN Rosalind vari compote. NICE!
357 Mburg 10" green Hanging Cherries 3-1 edge bowl, tiny flake on base
358 M burg 7" green Blackberry wreath bowl
359 M burg 10" mari peacock at Urn MIC bowl.
360 Mburg 6" mari Blackberry Wreath round bowl
361 Nwood mari Good Luck plate w/BW back
362 Nwood 8" blue stippled Good Luck ruffled bowl. Scarce
363 Nwood 8" mari stippled Good Luck bowl. dark color
364 Nwood blue 8" Good Luck ruffled bowl, Nice
365 Nwood 8"purple Good Luck ruffled bowl
366 Nwood 8" mari Good Luck ruffled bowl. yellow irid.
367 Nwood 9" mari G&C plate
368 Nwood 9" purple G&C plate
369 2 Morning Glory mini tankards
370 Imp 9" mari Acanthus chop plate

Thanks for participating in today's auction.

**Our next Carnival Glass Auction will be Feb. 28, 2009 at Greenville Auction Center
The Gentry Collection of Ft Myers, FL**



Carnival Glass Auction

Saturday February 7th, 2009 9:30am
Doors open at 7:30am
HOLMES COUNTY EXPO CENTER



3149 St Rt 39 WALNUT CREEK, OHIO 44687

Directions: Please use mapquest.com to get directions from your location. Very easy to find!

WE ARE HEADING BACK TO AMISH COUNTRY! THIS IS GREAT TIME OF YEAR TO VISIT HOLMES COUNTY SO LET'S GO! WE HAVE A NICE AUCTION FOR YOU WITH A MAJORITY OF THE COLLECTION COMING FROM THE LOU KNIGHT COLLECTION OUT OF TEXAS. ALSO COMBINED WITH A SMALLER COLLECTION FROM HERE IN OHIO, THIS HAS PROVIDED A VERY NICE AUCTION FOR EVERYONE! COME ON OVER AND SEE US! GIVE LAURIE A CALL IF YOU CANNOT MAKE IT.

ALSO, KAUFMAN REALTY & AUCTIONS, WILL BE CONDUCTING AN AUCTION OF FANTASTIC ANTIQUES JUST ACROSS THE HALL. 2 GREAT AUCTIONS THE SAME DAY IN THE SAME BUILDING!

*****Mail, E-Mail, Phone and Absentee Bids Policy:*****

Phone inquiries on items of interest are welcome! 937.548.7835 or 937.459.9562

1. Bidders take full responsibility to honor any and all bids that are executed in your behalf.
2. All items to be paid for within 7 days of notification unless other arrangements are made prior to auction. Successful absentee bidders must also pay *estimated* shipping costs. **NOTE:** There will be a \$5.00 fee added, per item, to the selling price of all **successful** absentee bids plus postage & ins.
3. All items bid competitively against the audience. **We do not start with your bid.**
4. Items will be bid on in perfect condition with average to above average iridescence unless otherwise stated or noted on your order of sale list or absentee bid sheet. **We will describe each item as accurately as possible!! (see listing) Bids will not be carried out if a damage is found during auction.** If manufacture problems bother you such as air bubbles, pulled points, soda ash, tool marks, or any other manufacturing flaw, please be specific in your mail bids or email bids. *If there is a manufacture flaw on an item that we feel is truly distracting, we have noted that in the listing already. Auction Company has the right NOT to execute an absentee bid for any reason.*
5. All bids can be called in to: (937) 447-4905, faxed to 937-548-3492 or sent to 5239 St. Rt. 49 South, Greenville, OH 45331. You can also e-mail bids and ask questions directly from our website (Please Ask!)
6. **All mail, faxed, write-in, call in and email bids due by FRIDAY FEBRUARY 6TH NOON**
7. **Anyone wishing to bid Live during the auction via telephone MUST have your request in by FRIDAY FEBRUARY 6TH AT NOON**
Items must have a value of approx. \$500.00 or more to live phone bid. If under \$500.00, please leave an absentee bid.
8. If someone in the audience is bidding for you they must pay for the item(s) before leaving.

To view pictures & listing please visit our websites:

www.jimwrodauction.com or www.auctionzip.com ID #11511

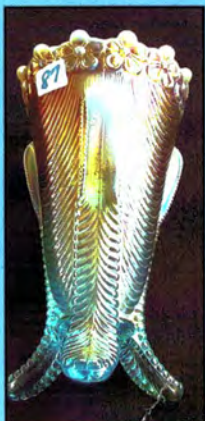
Terms and Conditions of Auction: Cash, Travelers checks, business or personal checks with proper I.D. We now have Visa/ MC and Discover with a 3% clerk fee. All items being sold **AS IS** w/ **NO MINIMUM** and **NO RESERVE!**

Hotels: A LARGE ARRAY OF LODGING CAN BE FOUND AT: <http://www.visitamishcountry.com/looding.php>



Jim Wroda Auction Services

5239 St Rt 49 S. Greenville, Ohio 45331
Jim Wroda and Mike Baker - Auctioneers



Rapid Printing — Greenville, Ohio — 937-548-1010

