

Outstanding Carnival Glass

Auction

Saturday, November 22nd, 2008 -- 9:30 A.M.

Holiday Inn - Wentzville • 900 Corporate Parkway (Exit 212a off of I-70) • Wentzville, Missouri
(soon to be under new ownership) • For Reservations call: 636-327-7001



100

125

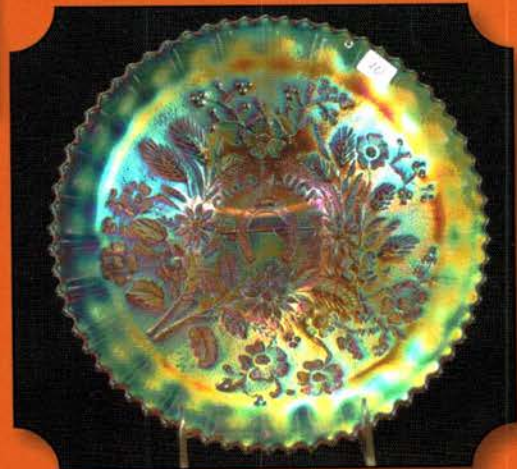


25



350

10



Seeck Auctions
JIM & JAN SEECK
641-424-1116





Carnival Glass Auction



Saturday, November 22nd, 2008 -- 9:30 A.M.

Holiday Inn – Wentzville, Missouri

Preview: Friday, November 21st – 3 pm

NO BUYER'S PREMIUM

Seeck Auctions is pleased to be selling a wonderful selection of Carnival Glass from various collections. Dale Matheny and the late George Thomas have approx. 50 top quality pieces in the auction along with glass from Kansas and Florida. Join us in St. Louis for a great opportunity to add some fantastic Carnival Glass to your collection!

The Holiday Inn Wentzville may be under new ownership at the time of the auction but address and telephone number will remain the same. Reservations can be made by calling the hotel directly at 636-327-7001. Please mention the "Seeck Auction" for a great room rate of \$61.99. If you have any problems, please give us a call.

Don't forget to check out our website for lots of pictures!

www.seeckauction.com

Also, please email us and we will put you on our email mailing list for auction notices.

Terms: Cash or Check, VISA and MasterCard accepted w/proper ID. 4% Clerking Fee on all purchases except for payment of cash or check. Announcements made day of sale take precedence over any printed information.

**Seeck Auctions
641-424-1116**

Seeck Auctions

**EMAIL:
jimjan@seeckauction.com**

ABSENTEE BID POLICY

1. Write-in bids will be accepted by sending the numbers of the item(s) desired and the amount bid on each to: **Seeck Auctions, PO Box 377, Mason City, Iowa 50402.**
2. You may call in your bids previous to the auction at (641)424-1116. (this is not live phone bidding)
3. You may **email** your bids to us: **jimjan@seeckauction.com** Include the numbers of the item(s) you would like to bid on and amount bid on each, please include your telephone number.
4. Live phone bidding is available. Bidding must start on item at \$500. Please call for details.
5. There is a **\$7 handling charge** for each successful bid. Shipping and insurance charges are additional.
6. Bidders will be notified by phone/email if their bid(s) are successful. This will be done 1 - 3 days after the auction.
7. Please have all bids in by **Wed., Nov. 19th**. All bids (by mail, phone or **email**) after this date may not be carried out.
8. Please place bids in the following increments: \$1 to \$300 - \$5 increments \$300 up - \$25 increments.
9. **If you do not receive an item that sold for less than your bid, assume we cancelled your bid because the piece of glass had below average color, manufacture problem, damage or was not listed correctly.**
10. Auction results are posted on our website within 2 weeks of the auction.

- ___ 1. Vintage IC shaped sauce - blue
- ___ 2. Peacock Tail ruffled hat - amethyst
- ___ 3. Blackberry Spray ruffled hat - marigold
- ___ 4. Fishscale & Beads ruffled sauce - marigold
- ___ 5. Petals ruffled compote - green
- ___ 6. Two Fruits divided bonbon - marigold
- ___ 7. N's Stippled Rays PCE bowl w/plain back - marigold
- ___ 8. Daisy & Plume stemmed rose bowl - purple
- ___ 9. Luster Rose 10" round bowl - marigold
- ___ 10. **Stippled Good Luck 9" plate w/ribbed back - pastel marigold - fantastic yellow irid., super nice plate!**
- ___ 11. Persian Garden 6" plate - marigold
- ___ 12. **Jeweled Heart ftd water pitcher - marigold - scarce, nice**
- ___ 13. Scroll Embossed small compote - marigold
- ___ 14. Fenton's Stippled Rays lg rose bowl - marigold
- ___ 15. **Lattice & Grape 7 pc. tankard water set - blue - scarce set, nice**
- ___ 16. **Lattice & Grape 7 pc. tankard water set - marigold - pretty set**
- ___ 17. M'burg Primrose ruffled bowl - marigold - radium & dark, super bowl
- ___ 18. Stippled Grape & Cable Variant 9" plate w/ribbed back - green - silvery
- ___ 19. Cherry Chain 6" plate - marigold
- ___ 20. **Persian Medallion 9" plate - blue - very pretty example, not many look like this one**
- ___ 21. Heavy Grape 6" ruffled bowl - purple
- ___ 22. **Peacock & Grape ruffled bowl - peach opal - scarce & very nice**
- ___ 23. Peacock & Grape ruffled bowl - blue
- ___ 24. Inverted Coin Dot water pitcher - marigold
- ___ 24A. Inverted Coin Dot tumbler - marigold
- ___ 25. **Rustic 22" funeral vase w/plunger base - amethyst - extremely rare vase & pretty, a dandy**
- ___ 26. Panther ftd ruffled sauces (4) - marigold - choice
- ___ 27. **Orange Tree w/trunk 9" plate - blue - super pretty, great plate**
- ___ 28. Orange Tree 9" plate - clambroth
- ___ 29. Persian Medallion 6" plate - marigold
- ___ 30. **Peacocks PCE bowl w/ribbed back - ice green - super pretty example, as nice as these get!**
- ___ 31. **Peacocks PCE bowl w/ribbed back - green - super pretty**
- ___ 32. Enameled Cherry & Little Flowers 7 pc. water set - blue
- ___ 33. Enameled Daisy & Little Flowers water pitcher - blue
- ___ 34. Optic & Buttons rose bowl - marigold
- ___ 35. **Two Flowers ftd chop plate - marigold - a beauty, very rare & highly desirable**
- ___ 36. N's Grape Leaves ruffled bowl - green
- ___ 37. N's Grape Leaves ruffled bowl - purple
- ___ 38. N's Grape Leaves ruffled bowl - lime green w/marigold overlay - have never seen this before
- ___ 39. Butterfly & Fern water pitcher & 2 tumblers - marigold - pitcher cracked, sold as set
- ___ 40. **Wishbone & Spades chop plate - purple - super pretty plate, very rare**
- ___ 41. Grape Delight rose bowl - purple - nice
- ___ 42. Grape Delight rose bowl - white - nice
- ___ 43. **Persian Garden 7 pc. ice cream set - white - scarce to find a complete set**
- ___ 44. Fenton's Grape & Cable ftd ruffled bowl - lime green w/marigold overlay
- ___ 45. Ftd Orange Tree 6 pc. water set - blue - scarce set, pitcher feet has a little damage, but most do
- ___ 46. **Drapery Variant 8" vase - amethyst - super pretty w/unusual ruffled top**
- ___ 47. **Drapery Variant 9 1/2" vase - blue - nice**
- ___ 48. **Drapery Variant 8 1/2" vase - marigold - dark & super**
- ___ 49. Horse Medallion ftd JIP dish - blue - silvery
- ___ 50. N's Peach 7 pc. water set - blue - electric, a super set
- ___ 51. **N's Peach 7 pc. water set - white w/gold decoration - super with excellent gold, nice irid.**
- ___ 52. Singing Birds mug - blue
- ___ 53. Singing Birds mugs (2) - purple - choice
- ___ 54. Singing Birds mugs (3) - marigold - choice
- ___ 55. **Stippled Three Fruits spt ftd ruffled bowl - aqua opal - absolutely super pretty, I love this piece**
- ___ 56. Three Fruits spt ftd ruffled bowl - purple
- ___ 57. Birds & Cherries ruffled compote - green
- ___ 58. Birds & Cherries ruffled compotes (2) - blue - choice
- ___ 59. Estate cream & sugar - marigold
- ___ 60. **Peacocks 9" plate w/ribbed back - super pretty, great example**
- ___ 61. **Peacocks 9" plate w/ribbed back - amethyst - scarce & very pretty**
- ___ 62. **Peacocks 9" plate w/ribbed back - ice green - scarce**
- ___ 63. **Peacocks 9" plate w/ribbed back - marigold - pretty**
- ___ 64. Maple Leaf 5 pc. berry set - purple - minor pinpoint on master berry
- ___ 65. **N's Peacock at the Fountain 7 pc. water set - blue - pretty set**
- ___ 66. **N's Peacock at the Fountain water pitcher - purple - scarce**
- ___ 67. N's Peacock at the Fountain tumbler - purple
- ___ 68. **N's Peacock at the Fountain 7 pc. water set - marigold - scarce, nice**
- ___ 69. **N's Peacock at the Fountain 7 pc. berry set - marigold - pretty**
- ___ 70. **N's Peacock at the Fountain 8 pc. punch set - marigold - dark & pretty**
- ___ 71. **N's Peacock at the Fountain 4 pc. table set - marigold - dark & nice**
- ___ 72. N's Peacock at the Fountain punch cups (8) - marigold - choice
- ___ 73. **N's Peacock at the Fountain fruit bowl - marigold - nice**
- ___ 74. Beads & Flowers 6" plate - peach opal
- ___ 75. **Stippled Three Fruits 9" plate w/ribbed back - aqua - no opal, very rare color & super nice**
- ___ 76. **Stippled Three Fruits 9" plate w/ribbed back - blue - scarce, nice**

- ___ 77. Stippled Three Fruits 9" plate w/ribbed back - purple
- ___ 78. M'burg Hanging Cherries 7" IC shaped bowl - green - satin
- ___ 79. M'burg Hanging Cherries 7" IC shaped bowl - amethyst - satin
- ___ 80. Persian Garden chop plate - purple - extremely rare plate, lacks irid.
- ___ 81. Dragon & Lotus IC shaped bowl - marigold
- ___ 82. Ripple 9 1/2" vase - blue - extremely rare Imperial vase, looks blue & pretty
- ___ 83. Ripple 11" vase - smoke - super dark color, a beauty
- ___ 84. Ripple 11" vase - aqua - nice
- ___ 85. Leaf & Beads rose bowl - aqua opal - nice
- ___ 86. Leaf & Beads rose bowl - blue - also nice
- ___ 87. Fenton's Grape & Cable ftd ruffled fruit bowl w/Persian Medallion interior - blue - minor pin-point on edge
- ___ 88. Fenton's Grape & Cable ftd ruffled fruit bowl w/Persian Medallion interior - marigold - dark & super
- ___ 89. Strawberry PCE bowl w/BW back - light amber w/marigold overlay - nice
- ___ 90. NUART Chrysanthemum chop plate - marigold - very scarce, nice
- ___ 91. Scroll Embossed lg ruffled compote - marigold
- ___ 92. Little Fishes ftd ruffled master berry bowl - blue, nice
- ___ 93. Floral & Grape water pitcher - blue - super pretty
- ___ 93A. Floral & Grape tumbler - blue
- ___ 94. Acorn IC shaped bowl - aqua w/marigold overlay
- ___ 95. M'burg Diamonds water pitcher - aqua - scarce color
- ___ 96. M'burg Diamonds water pitcher - marigold - scarce
- ___ 97. Pansy ruffled bowl - green - have never seen one this pretty, super irid.!
- ___ 98. Pansy ruffled bowl - purple - electric
- ___ 99. Pansy ruffled bowl - marigold - nice
- ___ 100. S Repeat 15 pc. punch set - purple - super rare & nice!
- ___ 101. M'burg Blackberry Wreath 8" IC shaped bowl - green - radium
- ___ 102. Raspberry milk pitcher - green - very pretty
- ___ 103. Dragon & Lotus ruffled bowl - blue - fantastic radium type irid., unique & beautiful bowl
- ___ 104. Dragon & Lotus ruffled bowl - amethyst - super pretty
- ___ 105. M'burg Blackberry Wreath deep round sauce - marigold
- ___ 106. Colonial Lady vase - purple - very rare & highly desirable
- ___ 107. Colonial Lady vase - marigold - has unusual 8 ruffled top, neat
- ___ 108. M'burg Grape Wreath Variant 8" ruffled bowl w/Star center - green - radium
- ___ 109. Rainbow 9" handgrip plate w/BW back - purple
- ___ 110. Fenton's Peacock at Urn 9" plate - blue - very pretty
- ___ 111. Fenton's Peacock at Urn 9" plate - marigold - large chip on edge
- ___ 112. Acorn Burrs indiv. berry bowls (4) - marigold - choice
- ___ 113. Tiger Lily water pitcher - blue - Non-American
- ___ 114. Tiger Lily tumbler - blue - Non-American
- ___ 115. Morning Glory 17" vase - purple - scarce & pretty
- ___ 116. Morning Glory 16" vase - marigold - also very pretty
- ___ 117. Stag & Holly spt ftd deep round bowl - blue
- ___ 118. Imperial Grape 7 pc. water set - marigold
- ___ 119. Imperial Grape tumblers (4) - purple - choice
- ___ 120. Hearts & Flowers ruffled compote - aqua opal - very pretty
- ___ 121. Hearts & Flowers ruffled compote - blue - very nice
- ___ 122. Three Fruits ruffled bowl w/plain back - green
- ___ 123. Three Fruits ruffled bowl w/plain back - marigold
- ___ 124. Pepper Plant ruffled hat - amethyst
- ___ 125. Poppy Show 9" plate - blue - super pretty irid., highly desirable
- ___ 126. Poppy Show 9" plate - ice blue - very pretty example, rare
- ___ 127. Poppy Show 9" plate - marigold - pretty, even irid., scarce
- ___ 128. Wine & Roses cider pitcher - marigold
- ___ 129. Strutting Peacock cvd cream & sugar - amethyst
- ___ 130. Dandelion Knight's Templar mug - ice green - very nice example
- ___ 131. Dandelion Knight's Templar mug - ice blue - nice for these, rare
- ___ 132. Dandelion Knight's Templar mug - marigold - dark, nice
- ___ 133. Dandelion mug - aqua opal - pretty irid.,
- ___ 134. Dandelion mug - green - scarce color, nice
- ___ 135. Dandelion mug - blue - nice
- ___ 136. Dandelion mug - purple - pretty
- ___ 137. Dandelion mug - marigold - also nice
- ___ 138. M'burg Marilyn water pitcher - amethyst - scarce pitcher
- ___ 139. M'burg Marilyn tumbler - amethyst
- ___ 140. Grape & Cable banana boat - green - scarce, nice
- ___ 141. Stippled & Banded Grape & Cable banana boat - blue - scarce, nice
- ___ 142. Stag & Holly lg size IC shaped bowl - blue - pretty
- ___ 143. Stag & Holly lg size IC shaped bowl - marigold
- ___ 144. Peacock & Grape spt ftd low IC shaped bowl - amethyst - almost call this a plate
- ___ 145. Grape & Cable tankard water pitcher - marigold - scarce
- ___ 146. Diamond Points 9 1/2" vase - purple
- ___ 147. Captive Rose 9" plates (2) - blue - choice
- ___ 148. Windmill water pitcher - marigold - pretty
- ___ 149. Windmill tumbler - marigold
- ___ 150. Stippled Peacock at Urn master IC bowl - blue - super pretty example of this bowl
- ___ 151. Stippled Peacock at Urn master IC bowl - marigold - beautiful

- ___ 152. Vintage Banded ftd water pitcher - marigold
 ___ 153. Vintage Banded tumblers (2) - marigold - choice
 ___ 154. Beaded hatpins (3) - choice
 ___ **155. Good Luck 9" plate w/ribbed back - green - pretty & quite rare**
 ___ **156. Good Luck 9" plate w/ribbed back - marigold - scarce**
 ___ 157. M'burg Hanging Cherries 10" ruffled bowl - marigold - satin
 ___ 158. Cut Cosmos tumbler - marigold - dark
 ___ 159. Beaded Shell mug - blue
 ___ **160. Many Fruits punch bowl & base - purple - scarce & highly desirable**
 ___ 161. Basketweave Miniature basket - marigold
 ___ **162. Butterfly & Fern water pitcher - blue - nice, scarce**
 ___ 163. Butterfly & Fern water pitcher - marigold
 ___ 164. Daisy & Plume rose bowl w/ rayed interior - green - rough feet
 ___ **165. Peacock Tail 9" plate - marigold - very rare, dark w/pretty irid., couple of chips on backside**
 ___ 166. Holly 8 ruffled bowl - amethyst - beautiful
 ___ 167. Holly 6 ruffled bowl - blue - also pretty
 ___ 168. Vintage small size epergne - blue - lily stuck in bottom
 ___ 169. Orange Tree standard size mugs (2) - blue - choice
 ___ **170. M'burg Tulip Scroll 7" vase - super pretty, a dandy**
 ___ 171. Grape & Cable Variant 9" plate w/BW back - purple
 ___ 172. Grape & Cable Variant 9" plate w/BW back - marigold
 ___ 173. Octagon wine decanter - marigold
 ___ 174. Ftd Orange Tree creamer - blue - chip on foot
 ___ **175. Little Daisies deep round bowl - marigold - dark & super pretty, very rare especially in this shape**
 ___ 176. Strawberry ruffled bowl w/plain back - green
 ___ 177. Pinecone 7" plate - ambery/purple - sorry, can't describe this color
 ___ 178. Pinecone 7" plate - blue
 ___ 179. Three Fruits dome ftd ruffled bowl - amethyst - lacks irid.
 ___ **180. Morning Glory 12" funeral vase - has 9" mouth, short & squatty for these, neat**
 ___ 181. Imperial Grape 6" plate - green
 ___ 182. Ripple 12" vases (2) - purple - has 3 3/8" bases, choice
 ___ 183. Miniature Morning Glory 5 1/2" vase - smoke - nice
 ___ 184. Miniature Morning Glory 7" vase - smoke
 ___ **185. Grape & Cable water pitcher - green - scarce, nice**
 ___ 186. Grape & Cable tumblers (3) - green - choice
 ___ **187. Grape & Cable water pitcher - purple - super example**
 ___ 188. Grape & Cable tumbler - purple - pretty
 ___ 189. Hattie deep round bowl - marigold
 ___ **190. N's Bushel Basket - sapphire - extremely rare color, highly desirable**
 ___ **191. N's Bushel Basket - ice green - scarce**
 ___ 192. N's Bushel Basket - white
 ___ **193. N's Bushel Basket - smoke - very pretty**
 ___ **194. N's Bushel Basket - green - scarce color**
 ___ 195. N's Bushel Basket - aqua opal - nice
 ___ 196. N's Bushel Basket - blue
 ___ 197. N's Bushel Basket - purple
 ___ 198. N's Bushel Basket - marigold
 ___ 199. Peacock & Grape spt ftd ruffled bowl - amethyst
 ___ **200. M'burg Many Stars IC shaped bowl - amethyst - radium, nice, extremely rare, 5 pt star**
 ___ 201. Many Fruits 10" ruffled bowl - marigold - pastel
 ___ 202. Corinth 8 1/2" vase - blue opal - very nice
 ___ 203. Corinth 10 1/2" vase - marigold on milk glass - super pretty
 ___ 204. Honeycomb kerosene lamp w/shade - marigold
 ___ **205. Aurora Pearls decorated brides bowl - teal green - pretty piece, holder has some damage**
 ___ 206. Fenton's Three Fruits 9" plate - amethyst
 ___ **207. Brooklyn Bridge 10 ruffled bowl - marigold**
 ___ 208. Apple Tree water pitcher - marigold
 ___ 209. Little Flowers tri-cornered sauce - marigold
 ___ **210. Mikado round compote - blue - scarce, nice**
 ___ 211. Beaded Shell mug - blue
 ___ 212. Beaded Shell mugs (2) - purple - choice
 ___ 213. Maple Leaf 6 pc. water set - purple
 ___ 214. Starfish ruffled compote - peach opal
 ___ **215. Holly 9" plate - amethyst - pretty**
 ___ 216. Holly 9" plate - blue - chip on back edge
 ___ 217. Open Rose 9" plate - amber - scarce color
 ___ 218. Dugan Cherries 8 ruffled bowl - peach opal
 ___ 219. Imperial Chesterfield 7" candlesticks - smoke - nice, one has chip on top
 ___ **220. M'burg Peacock master berry bowl - green - radium & nice**
 ___ 221. Imperial Grape ruffled bowl - marigold - dark
 ___ 222. Imperial Grape ruffled bowl - clambroth - pretty
 ___ 223. Star of David ruffled bowl - purple - pretty
 ___ 224. Plaid IC shaped bowl - amethyst - very rare color, silvery
 ___ **225. Dandelion tankard water pitcher - lavender - pretty with unusual color**
 ___ 226. Carolina Dogwood ruffled bowl - marigold on milk glass
 ___ 227. Drapery rose bowl - amethyst - super pretty
 ___ **228. Drapery rose bowl - marigold - very pretty, rare color**
 ___ 229. Two Flowers spt ftd deep round bowl - blue
 ___ **230. Singing Birds water pitcher - purple - nice**
 ___ **231. Singing Birds water pitcher - marigold - nice**
 ___ 232. Twins fruit bowl & base - marigold
 ___ 233. Kittens plate - clambroth
 ___ 234. Dahlia tumbler - white
 ___ **235. Beaded Cable rose bowl - white - scarce**
 ___ 236. Beaded Cable rose bowl - aqua opal - also nice
 ___ 237. Beaded Cable rose bowl - purple
 ___ 238. Beaded Cable rose bowl - marigold
 ___ 239. Cosmos & Cane 7" ruffled bowl w/Headdress interior - marigold
 ___ **240. Octagon small size compote - purple - super pretty, minor pinpoint on base**
 ___ 241. Ripple 8" vase, has 2 7/8" base - amber - nice

- ___ 242. Ripple 11" vase, has 2 7/8" base - white - fabulous irid. w/just a touch of marigold around the top
- ___ 243. **Sunflower spt ftd ruffled bowl - purple - electric blue irid., a beauty**
- ___ 244. Scroll Embossed ruffled compote - marigold
- ___ 245. **Inverted Thistle water pitcher - purple - super pretty, large chip on base**
- ___ 246. Fisherman's mug - marigold
- ___ 247. Fisherman's mug - amethyst
- ___ 248. Fisherman's mug - purple
- ___ 249. Double Star tumbler - green
- ___ 250. **Stippled Three Fruits ruffled bowl w/ribbed back - aqua opal - fantastic opal w/super irid.**
- ___ 251. Stippled Three Fruits ruffled bowl w/ribbed back - white - scarce
- ___ 252. Grape Delight nut bowl - blue - cracked
- ___ 253. **Circle Scroll water pitcher - marigold - very rare pitcher**
- ___ 254. Raspberry gravy boat - purple
- ___ 255. **M'burg Courthouse IC shaped bowl - amethyst - radium, a super one!**
- ___ 256. Fine Cut & Roses rose bowl - green
- ___ 257. Good Luck PCE bowl w/ribbed back - blue - scarce
- ___ 258. Good Luck PCE bowl w/ribbed back - marigold - pretty
- ___ 259. Curved Star or Cathedral chalice - marigold
- ___ 260. **Stag & Holly ftd chop plate - marigold - very pretty**
- ___ 261. Fine Rib 9" vase - aqua - heat check in base
- ___ 262. Fine Rib 9" vase - blue
- ___ 263. **Rose Show ruffled bowl - purple - pinpoint on rose**
- ___ 264. Orange Tree standard size mug - powder blue w/marigold overlay
- ___ 265. **Stippled Grape & Cable Variant ruffled bowl w/ribbed back - sapphire - rare, pretty**
- ___ 266. Petal & Fan crimped edge sauce - purple - nice
- ___ 267. Four Flowers 10" IC shaped bowl - peach opal - scarce
- ___ 268. Star Medallion milk pitcher - smoke
- ___ 269. Star Medallion milk pitchers (2) - marigold - choice
- ___ 270. **Ripple 17" funeral vase - purple - super pretty & very rare, great vase!**
- ___ 271. **Ripple 20" funeral vase - marigold - scarce, nice**
- ___ 272. Fenton's Three Fruits 9" plate - blue
- ___ 273. Fenton's Three Fruits 9" plate - green
- ___ 274. Orange Tree shaving mug - blue
- ___ 275. **N's Corn vase - ice blue - extremely rare color, nice, has leaf base**
- ___ 276. **N's Corn vase - white - scarce, nice, plain base**
- ___ 277. Persian Medallion ruffled bowl - green - nice
- ___ 278. Floral & Grape water pitcher - blue
- ___ 279. Blue tumblers including: Butterfly & Berry; Milady; Stork & Rushes; Peacock at the Fountain (2); Peach (2) - choice
- ___ 280. **Octagon small size water pitcher - purple - super pretty, very rare**
- ___ 281. Parlor Panels 6" squatty vase - marigold
- ___ 282. **Grape & Cable hatpin holder - marigold - dark & super**
- ___ 283. Field Flower water pitcher - green
- ___ 284. Double Dutch ftd round bowl - marigold
- ___ 285. **Fern Brand chocolates double handgrip plate - purple - super pretty & highly desirable**
- ___ 286. Optic & Button cup & saucer - marigold - cup has heat check
- ___ 287. Holly rose bowl - marigold - scarce shape
- ___ 288. Fenton's stretch glass guest set or tumble up - ice green w/blue handle
- ___ 289. Amethyst tumblers including: Enameled Columbine (5); Beaded Shell (3); Peacock at the Fountain; Grape & Cable - choice
- ___ 290. **Embroidered Mums 9" plate - ice green - very rare plate**
- ___ 291. Field Thistle spooner - marigold - chip on base
- ___ 292. Apple Blossom Twigs 9" smooth edge plate - peach opal - rare plate
- ___ 293. Grape & Cable 9" plate w/BW back - purple
- ___ 294. Stretch glass turned in bowl - celest blue
- ___ 295. **M'burg Country Kitchen 5" vase - marigold - very rare vase, just a few known**
- ___ 296. Luster & Clear square bowl in metal holder - smoke - neat
- ___ 297. **Four Seventy Four 8" ftd vase - marigold - hard one to find, great vase**
- ___ 298. Fruits & Flowers bonbon - blue
- ___ 299. Fruits & Flowers bonbon - purple
- ___ 300. **Zippered Loop small size finger lamp - smoke - super rare, nice**
- ___ 301. Grape & Cable spooner - purple
- ___ 302. **Wishbone & Spades 6" plate - purple - super pretty, a beauty**
- ___ 303. File water pitcher - marigold - very nice, scarce
- ___ 304. Pansy breakfast sugar - marigold
- ___ 305. **Peacocks 9" plate w/plain back - green - very pretty example of a plain back one**
- ___ 306. Ripple 9 1/2" vase, has 2 1/2" base - marigold
- ___ 307. Palm Beach 6" vase - marigold - rare
- ___ 308. N's Bushel Basket - blue
- ___ 309. N's Bushel Basket - marigold
- ___ 310. **Peacocks ruffled bowl w/ribbed back - green - super pretty example**
- ___ 311. Holly & Berry 7" ruffled bowl - purple - pretty
- ___ 312. M'burg Trout & Fly IC shaped bowl - amethyst - silvery
- ___ 313. Fenton's Flute 10" vase - red - rare, rare color
- ___ 314. M'burg Hanging Cherries creamer - amethyst
- ___ 315. **Formal JIP vase - purple - scarce, nice**
- ___ 316. Valentine 4 1/2" sauce - marigold - scarce pattern
- ___ 317. **Enameled Columbine water pitcher - blue - pretty**
- ___ 318. Fenton's Peacock at Urn 9" plate - blue - silvery
- ___ 319. Vintage fernery - blue
- ___ 320. **M'burg Peacock at Urn Variant ruffled sauce - has the bee and has beads on the urn, extremely rare, neat sauce**
- ___ 321. Marigold punch cups including: Waffle Block; Royalty & Flute and Cane - choice
- ___ 322. Imperial Grape water bottle - purple

- ___ 323. **Hearts & Flowers 9" plate w/ribbed back - purple - scarce & desirable**
 ___ 324. Sailboats ruffled sauce - blue
 ___ 325. **Vineyard water pitcher - peach opal - very rare color, hard to find**
 ___ 326. Puzzle bonbon - peach opal
 ___ 327. **Palm Beach squatty water pitcher - honey amber - scarce**
 ___ 328. Orange Tree w/Trunk IC shaped bowl - blue - fantastic
 ___ 329. Petal & Fan large ruffled bowl - peach opal
 ___ 330. **Buzz Saw lg size cruet - marigold - very pretty**
 ___ 331. Heavy Grape ruffled master berry bowl - smoke - super pretty
 ___ 332. Wishbone & Spades 10" tri-cornered dish - purple - rare in this shape
 ___ 333. Palm Beach whimsy banana boat shaped dish - amethyst w/gold painted interior
 ___ 334. Holly 3 in 1 edge bowl - marigold
 ___ 335. N's Eight Sided Bushel Basket - green - super nice, scarce
 ___ 336. Grape & Cable Variant ruffled bowl w/plain back - purple - spectacular, chip on base
 ___ 337. Leaf Columns 10" vase - sapphire - rare, pretty, chip on base
 ___ 338. **Wishbone ftd 9" plate - purple - scarce**
 ___ 339. Thistle CRE bowl - green
 ___ 340. **Good Luck 9" plate w/BW back - green - very pretty & scarce plate**
 ___ 341. Ripple 6 1/2" vase, has 2 1/2" base - marigold
 ___ 342. Palm Beach rose bowl w/gooseberry interior - white w/silver trim
 ___ 343. **Beaded Shell water pitcher - marigold - super pretty example, rare**
 ___ 344. Wreathed Cherry banana boat shaped sauce - purple
 ___ 345. Stag & Holly lg size ftd IC shaped bowl - blue - super
 ___ 346. Carnival Hobstar creamer - purple
 ___ 347. **Inverted Strawberry candlestick - green - scarce**
 ___ 348. Kittens ruffled dish - blue
 ___ 349. Kittens ruffled dish - marigold
 ___ 350. **Diamond Rib jardinière - marigold - this is the blank shape of the funeral vase after it came out of the mold, rare piece**
 ___ 351. Floral & Optic ftd rose bowl - smoke
 ___ 352. Pinecone saucer shaped 6" plate - green
 ___ 353. **Fluffy Peacock 5 pc. water set - amethyst - scarce & highly desirable**
 ___ 354. Stippled Robin mugs (2) - marigold - choice
 ___ 355. Heavy Grape 8" plate - purple - pretty
 ___ 356. Miniature Glory 6 1/2" vase - purple - super
 ___ 357. Three Fruits 9" plate w/plain back - purple
 ___ 358. Orange Tree loving cup - marigold - nice
 ___ 359. Thistle IC shaped bowl - green
 ___ 360. **Pulled Loop 5 1/2" squatty vase - white - super neat vase!**
 ___ 361. Kittens cup & saucer - marigold
 ___ 362. **M'burg Feather & Heart water pitcher - green - hard to find pitcher**
 ___ 363. Leaf & Beads rose bowl - aqua opal - butter-scotch
 ___ 364. Marigold tumblers including: Lattice & Grape; Stork & Rushes (3); Lattice & Daisy (6); Waterlily; Wreathed Cherry; Apple Tree; Tiger Lily (2) - choice
 ___ 365. Dogwood Sprays dome ftd ruffled bowl - purple - fantastic
 ___ 366. Heavy Grape chop plate - marigold
 ___ 367. M'burg Hanging Cherries master IC bowl - amethyst - satin
 ___ 368. **Autumn Acorn 9" plate - green - very scarce & desirable**
 ___ 369. Grapevine Lattice tumbler - white
 ___ 370. **Corn bottle - marigold - super dark**
 ___ 371. Kitten's whimsy toothpick - marigold - odd shaped
 ___ 372. Peacocks 9" plate w/ribbed back - marigold - minor nick on point
 ___ 373. Double Stemmed Rose dome ftd IC shaped bowl - white - almost a plate
 ___ 374. Stippled Rays 6" plate - marigold
 ___ 375. **Blueberry water pitcher - blue - very rare & highly desirable, neat shape**
 ___ 376. Wishbone & Spades ruffled sauce - purple
 ___ 377. Drapery 8" vase - white - nice
 ___ 378. **Poppy pickle dish - blue - super pretty**
 ___ 379. Wreath of Roses tri-cornered dish - marigold
 ___ 380. Ripple 14 1/2" squatty funeral vase w/9" wide mouth - marigold - super
 ___ 381. Rococco candy dish - smoke
 ___ 382. Vintage 6" plate - marigold - scarce
 ___ 383. Grape Arbor whimsy ruffled hat - blue - rare color
 ___ 384. Cut Cosmos tumbler - marigold
 ___ 385. N's Thin Rib 7 1/2" squatty vase - green - pretty
 ___ 386. Leaf Rays ruffled nappy - purple - pretty
 ___ 387. Dandelion mug - marigold
 ___ 388. **Fishscale & Beads 7" plate - marigold - fantastic irid.**
 ___ 389. Omnibus tumbler - marigold
 ___ 390. **Mirrored Lotus rose bowl - white - super pretty, rare rose bowl**
 ___ 391. Rococco vase - smoke
 ___ 392. Vintage 7" plate - blue
 ___ 393. Oriental Poppy tumbler - green
 ___ 394. **Blossomtime ruffled compote - green - scarce color**
 ___ 395. Butterfly & Berry ftd sauce - blue
 ___ 396. Good Luck ruffled bowl w/BW back - marigold
 ___ 397. Greek Key tumbler - marigold
 ___ 398. **Lattice & Grape tankard water pitcher - blue - scarce, nice**
 ___ 399. Coin Dot CRE bowl - green
 ___ 400. **Rose Show 9" plate - ice blue - very rare & desirable, very nice**
 ___ 401. Nothing
 ___ 402. Misc. pcs. of Carnival Glass - choice
 ___ 403. Misc. pcs. of Carnival Glass - choice
 ___ 404. Misc. pcs. of Carnival Glass - choice
 ___ 405. Misc. pcs. of Carnival Glass - choice
 ___ 406. Misc. contemporary pcs. of Carnival Glass - choice



225

Seeck Auctions

P.O. Box 377
Mason City, Iowa 50402

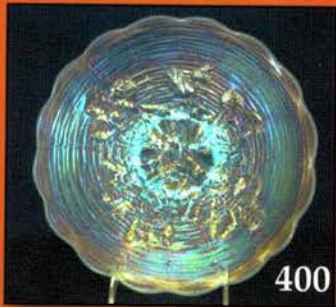
PRESORTED
FIRST CLASS MAIL
U.S. POSTAGE
PAID
MAIL EXPEDITORS

Outstanding Carnival Glass Auction

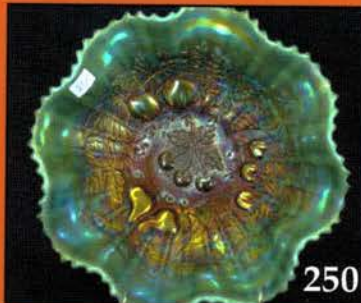
Saturday, November 22nd, 2008 - 9:30 AM

Holiday Inn - Wentzville

900 Corporate Parkway (Exit 212a off of I-70) • Wentzville, Missouri



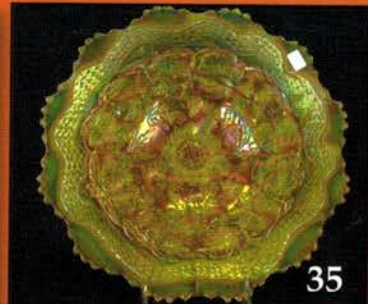
400



250



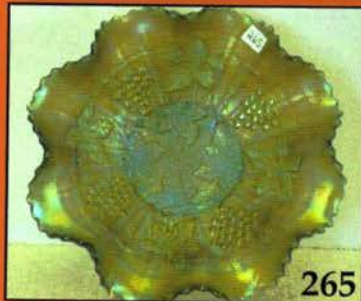
40



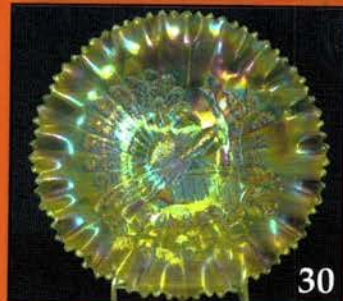
35



175



265



30

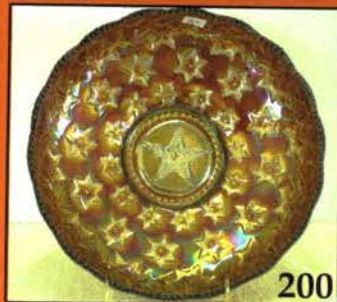


190

275



150



200



178

280



170

300