

Outstanding Carnival Glass
Auction

Saturday, June 7th, 2008 -- 9:30 A.M.

Best Western Milwaukee Airport Hotel and Convention Center
5105 South Howell Avenue • Milwaukee, Wisconsin
For Reservations, call (414)831-3655



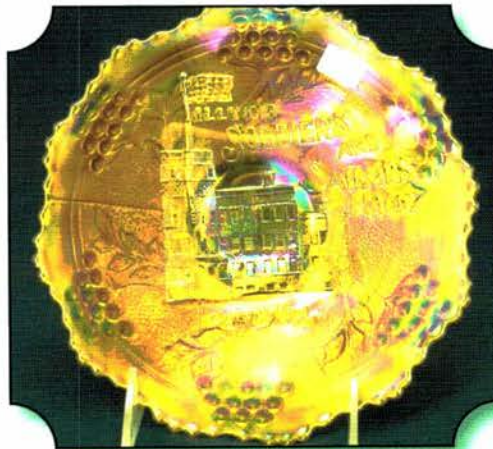
10



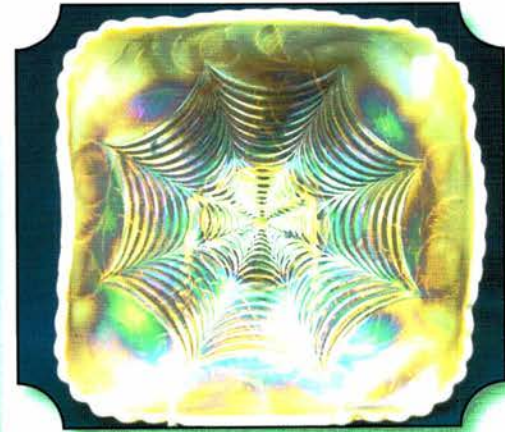
50



15



25



200

JIM & JAN SEECK

Seeck Auctions

641-424-1116



Carnival Glass Auction



SATURDAY, JUNE 7th, 2008 -- 9:30 A.M.

Best Western Airport Hotel -- Milwaukee, Wisconsin

NO BUYER'S PREMIUM

OPEN TO THE PUBLIC

Don't forget to check out our website for lots of pictures!

www.seeckauction.com

Also, please email us and we will put you on our email mailing list for auction notices.

Seeck Auctions is pleased to selling the Harry and Christina Sherman collection of Carnival Glass from Illinois. Harry and Christina are long time members of the Lincoln Land club. They loved peach opal and as you see, there are several very rare and wonderful peach opal pieces in their auction. Their auction also includes other rare and beautiful pieces – something for everyone. Come join the fun in Milwaukee this year as the club always put on a super convention.

Lincoln Land Club Convention info: Contact President Roger MacAuley at 815-732-7460
For Reservations at the Best Western Hotel, call (414)831-3655

Terms: Cash or Check, VISA and MasterCard accepted w/proper ID. **3% Clerking Fee** on all purchases except for payment of cash or check. Announcements made day of sale take precedence over any printed information.

Seeck Auctions
641-424-1116

Seeck Auctions

EMAIL:
jimjan@seeckauction.com

ABSENTEE BID POLICY

1. Write-in bids will be accepted by sending the numbers of the item(s) desired and the amount bid on each to: **Seeck Auctions, PO Box 377, Mason City, Iowa 50402.**
2. You may call in your bids previous to the auction at (641)424-1116. (this is not live phone bidding)
3. You may email your bids to us: **jimjan@seeckauction.com** Include the numbers of the item(s) you would like to bid on and amount bid on each, please include your telephone number.
4. Live phone bidding is available. Bidding must start on item at \$500. Please call for details.
5. There is a \$7 handling charge for each successful bid. Shipping and insurance charges are additional.
6. Bidders will be notified by phone/email if their bid(s) are successful. This will be done 1 - 3 days after the auction.
7. Please have all bids in by Wed., **June 4th.** All bids (by mail, phone or email) after this date may not be carried out.
8. Please place bids in the following increments: \$1 to \$300 - \$5 increments \$300 up - \$25 increments.
9. **If you do not receive an item that sold for less than your bid, assume we cancelled your bid because the piece of glass had below average color, manufacture problem, damage or was not listed correctly.**
10. Auction results are posted on our website within 14 days of the auction (depending on drive time home from the sale.)

- ___ 1. Folding Fan crimped edge banana boat shaped compote - peach opal
- ___ 2. Folding Fan crimped edge ruffled compote - peach opal - pretty
- ___ 3. Puzzle round bonbon - peach opal
- ___ 4. Daisy Dear 7" ruffled bowls (2) - peach opal - choice
- ___ 5. Wreath of Roses rose bowl - amethyst
- ___ 6. Wreath of Roses rose bowl - marigold
- ___ 7. Diamond Lace 4 1/2" round bowl - purple
- ___ 8. Little Flowers IC shaped sauce - marigold
- ___ 9. Pony ruffled bowl - marigold
- ___ **10. Fruit Salad 10 pc. punch set - peach opal - extremely rare set & pretty, not often sold**
- ___ 11. Pinched Swirl 4 1/2" vase - peach opal w/opal stripes
- ___ 12. Pinched Swirl 4 1/2" vase - peach opal
- ___ 13. Scroll Embossed small size ruffled compote - purple
- ___ 14. Morning Glory 11" JIP vase - marigold
- ___ **15. Victorian 11" ruffled bowl - peach opal - extremely rare color, not many known**
- ___ **16. Victorian 11" ruffled bowl - purple - nice example, scarce**
- ___ 17. Four-Seventy-Four milk pitcher - green
- ___ 18. Four-Seventy-Four milk pitcher - marigold
- ___ 18A. Stippled Rays 6" plate - pink - unusual base color
- ___ 19. Stippled Rays 6" plate - marigold
- ___ **20. Four Flowers 10" banana boat shaped dish - peach opal - rare shape, nice**
- ___ 21. Beaded Panels crimped edge tri-cornered compote - peach opal
- ___ 22. Wishbone & Spades 6" plate - purple
- ___ 23. Bells & Beads tri-cornered crimped edge 6" bowl - peach opal
- ___ 24. Bells & Beads crimped edge ruffled 6" bowl - peach opal - pretty
- ___ **25. Illinois Soldiers & Sailors Home 7" plate - marigold - absolutely super, a beauty**
- ___ 26. Open Rose 8" ruffled bowl - amber
- ___ 27. Fishscale & Beads crimped edge 6" plate - purple
- ___ 28. Fishscale & Beads crimped edge 6" plate - peach opal
- ___ 29. Octagon 7 pc. wine set - marigold
- ___ **30. Fanciful low ruffled bowl - peach opal - pretty**
- ___ 31. Fanciful low ruffled bowl - white - nice
- ___ 32. Fanciful low ruffled bowl - purple
- ___ 33. Fanciful low ruffled bowl - blue - silvery
- ___ **34. Persian Garden 6" plate - peach opal - very nice**
- ___ 35. Persian Garden 6" plates (2) - marigold - choice
- ___ 36. Persian Garden 6" plate w/Pearl of Pearls back - white - nice
- ___ 37. Star Medallion milk pitcher - smoke - pretty
- ___ 38. Star Medallion milk pitcher - marigold
- ___ 39. Hobstar Band straight sided 7 pc. water set - marigold
- ___ **40. Persian Garden 11" IC shaped bowl - peach opal - rare item**
- ___ 41. Persian Garden 11" IC shaped bowl - white - nice
- ___ 42. Thin Panel 5" tri-cornered crimped edge whimsy vase - peach opal - unusual top
- ___ 43. Thin Panels 6 1/4" JIP crimped edge vase - peach opal
- ___ 44. Thin Panels 7 1/2" JIP vase - peach opal
- ___ **45. Open Rose 9" plate - amber - super pretty**
- ___ 46. Open Rose 9" plate - marigold - pretty
- ___ 47. Open Rose 9" plate - green
- ___ 48. Dugan Cherries 9" ruffled bowl - peach opal
- ___ 49. Heavy Grape 7" ruffled berry bowl - purple
- ___ **50. Christmas compote - purple - extremely rare item & highly desirable**
- ___ 50A. Christmas compote - red - contemporary
- ___ 51. Holly & Berry ruffled bowl - peach opal
- ___ 52. Persian Medallion rose bowl - white - scarce
- ___ 53. Persian Medallion rose bowl - marigold - super pretty
- ___ 54. Stippled Rays 4 sides up large 10" bowl - white - rare shape, unusual
- ___ 55. Inverted Strawberry lg size rose bowl - purple - super pretty, minor nick on top edge
- ___ 56. Leaf Chain 7" plate - marigold
- ___ 57. Border Plants dome ftd handgrip plate - peach opal - pretty, scarce pattern
- ___ 58. Border Plants dome ftd crimped edge handgrip plate - peach opal - unusual irid. on outside edges only
- ___ 59. Fine Cut & Roses candy dish - aqua opal - normal feet, nice
- ___ 59A. Fine Cut & Roses candy dish - white
- ___ 60. Fine Cut & Roses candy dish - purple - normal feet
- ___ 60A. Fine Cut & Roses candy dish - green
- ___ 61. Fine Cut & Roses candy dish - marigold - normal feet
- ___ **62. Diamond Lace 7 pc. water set - purple - super pretty matching set**
- ___ 63. Estate toothpick - smoke - w/Souvenir of Winnebago, MN
- ___ 64. Estate toothpick - marigold
- ___ **65. Dahlia 4 pc. table set - white - very rare set & nice, butter dish has gold flowers**
- ___ 66. Double Stemmed Rose dome ftd 9" plate - white - nice
- ___ 67. Double Stemmed Rose dome ftd 9" low bowl - peach opal
- ___ 68. Imperial Grape 6" plate - purple
- ___ 69. Imperial Grape 6" plate - marigold
- ___ 70. Imperial Grape 6" plate - green
- ___ 70A. Imperial Grape 6" plate - lime green - rare color
- ___ 71. Four Seventy Four 7 pc. water set - marigold
- ___ 72. Lined Lattice 10 1/2" vase - white
- ___ **73. Heavy Grape master berry bowl - blue - rare color**
- ___ 74. Heavy Grape master berry bowl - marigold

- ___ 75. Butterfly & Tulip square shaped ftd ruffled bowl - purple - extremely rare bowl & nice
- ___ 76. Constellation ruffled compote - white
- ___ 77. Constellation ruffled compote - marigold - pretty
- ___ 78. Scales tri-cornered, 3 sides up dish - peach opal
- ___ 79. Scales banana boat shaped dish - peach opal
- ___ 80. Scales ruffled bowl - marigold on moonstone - pretty
- ___ 81. Scales ruffled bowl - marigold on milk glass
- ___ 82. Scales ruffled bowl - peach opal
- ___ **83. Peacock & Grape spt ftd ruffled bowl - red - rare & very nice**
- ___ 84. Peacock & Grape spt ftd ruffled bowl - amethyst - pretty
- ___ 85. Peacock & Grape spt ftd ruffled bowl - green
- ___ 86. Peacock & Grape spt ftd ruffled bowl - lime green w/ marigold overlay
- ___ 87. Daisy Wreath IC shaped bowl - peach opal - super pretty, almost flat enough to be a plate
- ___ 88. M'burg Holly Sprig card tray shaped bonbon - marigold - very flat, radium
- ___ **89. Persian Medallion bonbon - red - rare color, highly desirable**
- ___ 90. Persian Medallion bonbon - aqua
- ___ 91. Persian Medallion bonbon - blue
- ___ 92. Fishnet epergne - peach opal - scarce & desirable
- ___ 93. Concave Flute 10" JIP vase - peach opal - very rare in this color, nice
- ___ **94. Pineapple & Fan 8 pc. wine set - marigold - has tray, 6 wines & decanter w/stopper**
- ___ **95. M'burg Peacock at Urn giant ruffled compote - green - pretty, has two nicks on stem, rare**
- ___ 96. Wreath of Roses bonbon - blue
- ___ 97. Wreath of Roses bonbon - marigold
- ___ 98. Three Row 6" plate - smoke - pretty, rare color
- ___ 99. Three Row 6" plate - marigold - pretty
- ___ **100. Milady 7 pc. tankard water set - blue - extremely rare set & super**
- ___ **101. Peacock Tail 7" ruffled bowl peach opal - rare, rare color**
- ___ 102. Peacock Tail 7" ruffled bowl - marigold
- ___ 103. Fishscale & Beads 6" plate - marigold - super pretty
- ___ 104. Daisy & Plume whimsey banana boat shaped dish - peach opal
- ___ **105. Campbell & Beesley Spring Opening 1911 adv. handgrip plate - amethyst - rare**
- ___ 106. Single Flower Framed crimped edge deep round bowl - peach opal
- ___ 107. Heavy Iris 6 pc. tankard water set - marigold - scarce
- ___ 108. Fanciful low IC shaped bowl - white
- ___ 109. Fanciful low IC shaped bowl - marigold
- ___ 110. Field Thistle 6" plate - marigold
- ___ 111. Ski Star 8 ruffled large bowl - peach opal
- ___ 112. Garden Path Variant deep round sauce - peach opal - pretty
- ___ 113. Nautilus creamer - purple
- ___ 114. Nautilus whimsey sugar bowl - peach opal
- ___ 115. Nautilus sugar bowl w/ no curled ends - peach opal
- ___ 116. Honeycomb rose bowl - peach opal - pretty
- ___ **117. M'burg Strawberry 8" square bowl - amethyst - radium, scarce shape**
- ___ 118. Birds & Cherries ruffled compote - blue
- ___ 119. Sunflower & Diamond vase - marigold - pretty
- ___ **120. Persian Garden deep round fruit bowl & base - marigold - unusual shape for this**
- ___ 121. Persian Garden ruffled fruit bowl & base - marigold
- ___ 122. Flute breakfast creamer & sugar - purple - super
- ___ **123. Garden Path Variant lg ruffled bowl - peach opal - scarce & nice**
- ___ 124. Scroll Embossed 9" ruffled bowl w/ File back - marigold - super
- ___ **125. Coin Dot deep round bowl - red - cherry red color & very rare**
- ___ 126. Persian Garden deep round sauce - peach opal - nice
- ___ 127. Persian Medallion 7" plate - blue - scarce size
- ___ 128. Petal & Fan 7 pc. berry set - peach opal
- ___ 129. Star Fish bonbon - peach opal - nice
- ___ 130. Four Flowers 11" ruffled bowl - purple - rare size
- ___ 131. Single Flower framed ruffled bowl - peach opal - fantastic
- ___ 132. Fine Cut & Roses rose bowl - ice blue - scarce
- ___ 132A. Fine Cut & Roses rose bowl - green - super
- ___ 133. Fine Cut & Roses rose bowl - marigold
- ___ 133A. Fine Cut & Roses rose bowl - custard - non-carnival w/ nutmeg stain
- ___ 134. Single Flower Framed handgriped crimped edge bowl - peach opal
- ___ 135. Single Flower hldd basket - peach opal - very nice
- ___ 136. Four Flowers IC shaped sauce - peach opal
- ___ 137. Vintage powder jar - marigold
- ___ 138. Fishscale & Beads banana boat shaped dish - peach opal
- ___ 139. Vintage 7" plate - blue - nice
- ___ 140. Vintage 7" plate - green - nice
- ___ **141. Tiger Lily 7 pc. water set - purple - super nice set & very rare**
- ___ 142. Tiger Lily 6 pc. water set - green
- ___ **143. Luster Rose 10" round bowl - marigold - has decorated flowers & leaves, very unusual piece**
- ___ 144. Basketweave Open Edge ruffled basket - aqua
- ___ 144A. Basketweave Open Edge ruffled basket - blue

- ___ 145. Ski Star dome ftd crimped edge 9" plate - peach opal unusual shape
- ___ 146. Ski Star dome ftd tri-cornered crimped edge bowl - peach opal - nice
- ___ 147. Ski Star dome ftd handgrip plate - peach opal
- ___ 148. Chrysanthemum ruffled bowl - amethyst
- ___ 149. Six Petal tri-cornered bowl - peach opal
- ___ **150. Many Fruits 7 pc. punch set - purple - super pretty, a great set**
- ___ 151. Pastel Swan salt - peach opal
- ___ **152. Pastel Swan salt - sapphire - rare color, neat**
- ___ 153. Pastel Swan salt - amethyst
- ___ 154. Pastel Swan salt - marigold
- ___ 155. Pastel Swan salt - celest blue
- ___ 156. Pastel Swan salt - ice green
- ___ **157. Persian Garden 11" 6 ruffled bowl - peach opal - scarce bowl & nice**
- ___ **158. Persian Garden 11" 8 ruffled bowl - peach opal - also scarce & nice**
- ___ 159. Corinth 6" vase w/pinched in top - peach opal
- ___ 160. Raspberry milk pitcher - green - cracked in body by handle, pretty
- ___ 161. Raspberry milk pitcher - pretty
- ___ 162. Raspberry milk pitcher - marigold
- ___ 163. Smooth Rays w/Jeweled Heart back crimped edge 6" plate - peach opal
- ___ 164. April Showers 7" squatty vase - white - very nice
- ___ **165. Singing Birds mug - aqua opal - rare color**
- ___ 166. Question Mark crimped edge, banana boat shaped compote - peach opal
- ___ 167. Question Mark crimped edge, plate shaped compote - peach opal
- ___ 168. Grapevine Lattice 6" plate - purple
- ___ 169. Grapevine Lattice 6" plate - white - pretty
- ___ 170. Grapevine Lattice 6" plate - marigold
- ___ **171. Four Flowers chop plate w/soda gold back - peach opal - scarce plate**
- ___ 172. Four Flowers 6" plates (3) - peach opal - choice
- ___ 173. Basketweave Open Edge JIP basket - red
- ___ 174. Hobstar & Fruit banana boat shaped dish - peach opal
- ___ **175. Hearts & Flowers ruffled bowl w/ribbed back - marigold - super pretty & scarce**
- ___ 176. Hearts & Flowers ruffled bowl w/ribbed back - ice blue - scarce
- ___ 177. Peacock & Grape ruffled bowl - blue
- ___ 178. Peacock & Grape ruffled bowl - amethyst
- ___ 179. Acanthus milk pitcher - marigold
- ___ **180. Waterlily 7 pc. water set - marigold - very unusual pitcher, not many of these sold**
- ___ 181. Fishscale & Beads crimped edge dish in metal frame - peach opal
- ___ 182. Nippon ruffled bowl w/BW back - purple - pretty
- ___ **183. Wreathed Cherry master banana bowl - peach opal - rare in this color**
- ___ **184. Wreathed Cherry banana boat sauce - peach opal**
- ___ 185. Fruits & Flowers 7" plate - purple - nice
- ___ 186. Four Seventy Four 8 pc. punch set - marigold - nice
- ___ 187. Little Flowers 10" 3 in 1 edge bowl in brides bowl frame - green
- ___ 188. Round Up ruffled bowl - peach opal - pretty
- ___ 189. Footed Prism Panels vase - marigold
- ___ **190. Hattie chop plate - green - silvery**
- ___ 191. M'burg Hanging Cherries lg 3 in 1 edge bowl - marigold - satin
- ___ 192. Imperial Grape 6 pc. water set - marigold
- ___ 193. Fleur De Lis 6" plate - marigold - pretty
- ___ 194. Vintage small size epergne - amethyst - nice
- ___ 195. Six Petal ruffled bowl - peach opal
- ___ **196. Good Luck ruffled bowl w/ribbed back - marigold - pretty**
- ___ 197. Peacock Tail tri-cornered sauce - green
- ___ 198. Grape Delight rose bowl - purple
- ___ 199. Pulled Loop 9 1/2" vase - peach opal
- ___ **200. Heavy Webb 10" square bowl - peach opal - extremely rare bowl & super nice**
- ___ 200A. Poppy Show vases (2) marked 1907 - 2007 celebrating 100 years of Carnival Glass by Fenton - aqua opal - all proceeds go to the Club
- ___ 201. Inverted Strawberry round sauce - amethyst
- ___ 202. Lined Lattice 5 1/2" squatty vase - peach opal - nice
- ___ 203. Lined Lattice 5 1/2" squatty vase - marigold - nice
- ___ 204. Raindrops dome ftd ruffled bowl - peach opal
- ___ **205. Peacock at the Fountain butter dish - amethyst - scarce & nice**
- ___ 206. Peacock at the Fountain creamer - amethyst - nice
- ___ 207. Estate vase - smoke - Souvenir of Lewiston, Ia
- ___ 208. Estate perfume - smoke
- ___ 209. Inverted Feather cracker jar - green
- ___ 210. Apple Blossom Twigs ruffled bowl - peach opal - nice
- ___ 211. Pinecone 6" plate - green - nice
- ___ 212. Pinecone 6" plate - blue - nice
- ___ 213. Pinecone 6" plate - marigold - nice
- ___ 214. Starfish ruffled compote - peach opal
- ___ **215. Butterfly bonbon w/ribbed back - purple - super pretty**
- ___ 216. Pearly Dots ruffled compote - peach opal
- ___ 217. Grape & Cable 4 pc. table set - purple - lg chip on sugar
- ___ 218. Pond Lily card tray shaped bonbon - white
- ___ **219. M'burg Hobnail Swirl rose bowl - marigold - larger size than normal, scarce**
- ___ 220. Little Flowers 4 sides up 6" plate - marigold
- ___ 221. Lined Lattice ruffled bowl - marigold

- ___ 222. **Petal & Fan 6" crimped edge plate - purple - nice**
- ___ 223. Petal & Fan 6" crimped edge plate - peach opal - pretty
- ___ 224. Peach tumbler - blue
- ___ 225. **Wreath of Roses 9 pc. punch set - blue - rare color, bowl has plain interior, cups have Persian Medallion interior**
- ___ 226. Persian Garden IC shaped sauce - white
- ___ 227. Windmill milk pitcher - green
- ___ 228. Windmill milk pitcher - marigold - super
- ___ 229. Raindrops dome ftd deep ruffled bowl - peach opal
- ___ 230. **Diamond Points 10" vase - blue - pretty, scarce color**
- ___ 231. Diamond Points 9 1/2" vase - purple - nice
- ___ 232. Little Barrel - marigold
- ___ 233. Fanciful 9" plate - marigold
- ___ 234. Grape & Cable 6" plate - purple
- ___ 235. Four Flowers 7 pc. ruffled berry set - peach opal
- ___ 236. Stippled Petal ruffled bowl w/enameled decoration - peach opal
- ___ 237. Single Flower 3 in 1 edge bowl w/enameled decoration - peach opal
- ___ 238. Stippled Petal dome ftd round bowl w/enameled decoration - peach opal
- ___ 239. Single Flower 3 in 1 edge bowl w/enameled decoration - peach opal
- ___ 240. **Hearts & Flowers ruffled compote - aqua opal - scarce & nice**
- ___ 241. **Hearts & Flowers ruffled compote - marigold - dark & nice**
- ___ 242. **Hearts & Flowers ruffled compote - marigold - pastel & pretty**
- ___ 243. Hearts & Flowers ruffled compote - white - pretty
- ___ 244. Wild Strawberry 10" ruffled bowl - purple
- ___ 245. Four Flowers tri-cornered 10" bowl - peach opal - pretty
- ___ 246. Heisey Melon Rib spittoon - light marigold
- ___ 247. Round Up IC shaped bowl - marigold
- ___ 248. **Wishbone & Spades 10" IC shaped bowl - peach opal**
- ___ 249. Curved Star finger bowl - blue
- ___ 250. **Wishbone & Spades chop plate - purple - rare & highly desirable, nice plate**
- ___ 251. Garland rose bowl - marigold - nice
- ___ 252. Persian Medallion crimped edge ruffled compote - blue
- ___ 253. Peacocks ruffled bowl w/ribbed back - blue opal - not carnival
- ___ 254. Horse Medallion 7" plate - marigold - nice
- ___ 255. Dugan Cherries ruffled sauce - purple - super
- ___ 256. Grape & Cable cracker jar - marigold - nice
- ___ 257. Pearly Dots ruffled bowl - peach opal
- ___ 258. Palm Beach tri-cornered whimsey - honey amber
- ___ 259. Single Flower 8" crimped edge handgrip plate - peach opal
- ___ 260. **Wild Strawberry 8" handgrip plate - green - nice**
- ___ 261. **Wild Strawberry 8" handgrip plate - purple - nice**
- ___ 262. Four Flowers 9" ruffled bowl - amethyst - pretty
- ___ 263. Butterfly & Tulip ftd banana boat shaped bowl - marigold
- ___ 264. Birds & Cherries bonbon - blue
- ___ 265. **M'burg Peacock master berry bowl - light marigold - has radium irid., some may call this clambroth**
- ___ 266. Orange Tree powder jar - blue
- ___ 267. Single Flower Framed hldd basket - peach opal - scarce
- ___ 268. Ribbon Tie 3 in 1 edge bowl - blue - nice
- ___ 269. Dugan Cherries deep round sauce - peach opal
- ___ 270. Persian Medallion 6" plate - blue - pretty
- ___ 271. Persian Medallion 6" plate - black amethyst
- ___ 272. Persian Medallion 6" plate - marigold
- ___ 273. Fanciful 3 in 1 edge bowl - peach opal - scarce
- ___ 274. Fanciful 3 in 1 edge bowl - marigold - radium
- ___ 275. **Rose Show 9" plate - white - scarce & nice**
- ___ 275A. Flute toothpick - purple - pretty
- ___ 276. Flute toothpick - green
- ___ 276A. Flute toothpick - marigold
- ___ 277. Apple Blossom Twigs smooth edge 9" plate - peach opal
- ___ 278. **Dragon & Lotus spt ftd ruffled bowl - peach opal - scarce color, minor nicks on cleats on feet**
- ___ 279. Dragon & Lotus spt ftd ruffled bowl - green
- ___ 280. Dragon & Lotus spt ftd ruffled bowl - powder blue - minor nick on cleat
- ___ 281. **Acorn ruffled bowl - red - rare color, nice**
- ___ 282. Poinsettia milk pitcher - marigold
- ___ 283. Nippon PCE bowl w/ribbed back - ice blue - nice
- ___ 284. Ski Star crimped edge 6" plate - peach opal
- ___ 285. **M'burg Courthouse ruffled bowl - amethyst - radium & super, a beauty**
- ___ 286. Cosmos & Cane tumbler - marigold - nice
- ___ 287. Wishbone & Spades ruffled bowl - peach opal - scarce pattern
- ___ 288. Four Flowers 6" plate - purple - rare little plate
- ___ 289. Australian Butterfly Bush ruffled compote - marigold
- ___ 290. **Poppy Show ruffled bowl - ice blue - very scarce color**
- ___ 291. Large Footed Shell - marigold on milk glass - rare color, nice
- ___ 292. Large Footed Shell - peach opal - rare color, nice
- ___ 293. **Peacock & Grape 3 in 1 edge bowl - peach opal - scarce bowl**
- ___ 294. Luster Rose ftd centerpiece bowl - marigold - dark & super, a beauty

- ___ 295. Cherry Chain 6" plate - blue
 ___ 296. Cherry Chain 6" plate - marigold
 ___ 297. Many Fruits punch bowl top - purple - super
 ___ 298. Flowers & Frames dome ftd deep ruffled bowl - peach opal
 ___ 299. Blackberry Spray Variant ruffled hat - aqua - has two sets of blackberries
 ___ **300. M'burg Seacoast pin tray - marigold - super nice radium irid., toughest color to find**
 ___ 301. Ripple 12" vase, has 3 7/8" base - marigold - nice
 ___ **302. N's Corn vase w/stalk base - ice green**
 ___ 303. Apple Blossom Twigs 9" plate - peach opal - scarce
 ___ 304. Petal & Fan ruffled sauce - peach opal
 ___ **305. Tornado small size vase - purple - super pretty example**
 ___ 306. Estate cream & sugar - blue opal - rare set
 ___ 307. Estate cream & sugar - peach opal - scarce set
 ___ 308. Peacock Tail 6" plate - blue - irid. on back only
 ___ 309. N's Eight Sided bushel basket - purple
 ___ **310. Fluffy Peacock 7pc. water set - marigold - very nice set, scarce**
 ___ 311. M'burg Mayan IC shaped bowl - green - radium & pretty
 ___ 312. Good Luck PCE bowl w/BW back - green - scarce & nice
 ___ 313. Fenton's Three Fruits 9" plate - blue
 ___ 314. Question Mark ftd plate - marigold - scarce
 ___ 315. Enameled Ground Cherries 6 pc. water set - blue - nice
 ___ 316. Little Flowers 6" plate - marigold
 ___ 317. Holly ruffled bowl - peach opal - extremely rare & pretty, chip on base
 ___ 318. Inverted Strawberry powder jar - marigold
 ___ 319. Buzz Saw small size cruet - green - desirable, chip on top of stopper
 ___ **320. Wishbone & Spades 10" tri-cornered bowl - peach opal**
 ___ 321. Strawberry 9" plate w/BW back - purple
 ___ 322. Flowers & Frames dome ftd tri-cornered crimped edge bowl - peach opal
 ___ 323. Drapery candy dish - ice blue
 ___ 324. Target 9" vase - peach opal - nice
 ___ **325. Fisherman's mug - peach opal - extremely rare & highly desirable**
 ___ 326. Persian Medallion IC sauce - white - scarce color
 ___ **327. Garden Mums 6" plate - amethyst - scarce**
 ___ 328. Heavy Grape chop plate - purple - silvery
 ___ 329. Mikado round compote - marigold - nice
 ___ 330. Smooth Rays w/Jeweled Heart back basket - peach opal - cute piece, nice
 ___ 331. Grape & Cable 2 sides up 6" plate - amethyst
 ___ **332. Garden Path Variant 6" plate - peach opal - scarce & nice**
 ___ 333. Grape & Cable 7 pc. water set - purple - desirable
 ___ 334. Sailboats 6" plate - marigold - scarce
 ___ **335. Stippled Estate miniature vase - peach opal - cute**
 ___ 335A. Estate mug - marigold
 ___ 336. Grape & Cable breakfast set - purple
 ___ 337. Apple Blossom Twigs 3 in 1 edge banana boat shaped dish - peach opal
 ___ 338. Persian Medallion 9" IC shaped bowl - blue - scarce shape
 ___ 339. Target 5" squatty vase w/6 1/2" mouth - peach opal - neat shape
 ___ **340. N's Thin Rib 11" vase - ice blue - scarce**
 ___ 341. Coin Dot 3 in 1 edge bowl - peach opal - rare color
 ___ 342. Captive Rose 9" plate - blue - silvery
 ___ 343. Holly square shaped hatshape - peach opal - rare color
 ___ 344. Ski Star dome ftd crimped edge banana boat shaped dish - peach opal
 ___ **345. Wild Berry powder jar w/lid - marigold**
 ___ 346. Acorn Burrs master berry bowl - purple
 ___ 347. Orange Tree IC shaped bowl - white - pretty
 ___ 348. Wishbone PCE bowl w/BW back - marigold - nice
 ___ **349. Grape & Cable pin tray - purple - scarce**
 ___ **350. Corn bottle - marigold - dark & nice**
 ___ 351. Miniature Intaglio wire handled basket w/Souvenir of Abrams, Wis - peach opal
 ___ **352. Peacocks 9" plate w/ribbed back - blue - super, super pretty**
 ___ **353. Peacocks 9" plate w/ribbed back - purple - scarce & desirable**
 ___ 354. HOACGA room display Hobnail spittoons - 1986 thru 2000 and 2002 - choice
 ___ 355. HOACGA table favor mugs - 1978, '81, '82, '84(2), '85(2), '86(2), '87(2), '88(2), '89(4), '90(2), '92(3), '94(2), & '95(2) - choice
 ___ 356. Thumbprint & Oval vases - given at Lincoln Land convention - aqua opal(2), peach opal(2), JIP peach opal - choice
 ___ 357. HOACGA Souvenirs in red including: 1976 whiskey set, 1979 loving cups (2), 1978 corn vase, 1981 candle lamp, 1984 Good Luck whimsey hldd basket, 1991 Peacock & Dahlia plate, 1993 Good Luck plate - choice
 ___ 358. HOACGA Souvenirs including: 1980 Good Luck hatpin holder in ice green, 1988 red opal bell w/enamel decoration, 1999 Orange Tree wines in lavender, 1998 Orange Tree wines in white, 2000 Orange Tree wines in blue - choice
 ___ 359. 1982 LLCGA Souvenir rose bowl in aqua opal & peach opal - choice



Seeck Auctions

P.O. Box 377
Mason City, Iowa 50402

Presorted
First Class Mail
US Postage Paid
Mail Expeditors

75 Outstanding Carnival Glass Auction

Saturday, June 7th, 2008 -- 9:30 A.M.

Best Western Milwaukee Airport Hotel and Convention Center

T3 P1 671
Lee Markley
PO Box 306
Mentone IN 46539-0306

