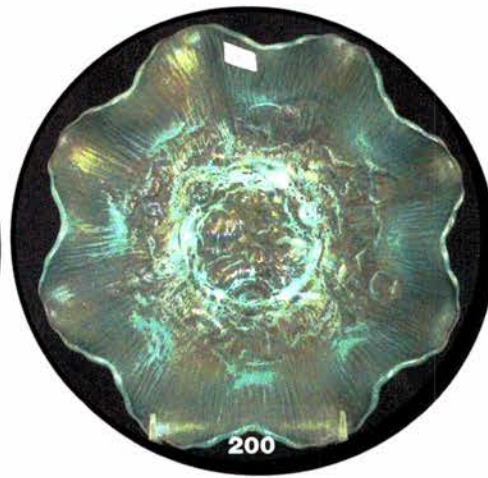
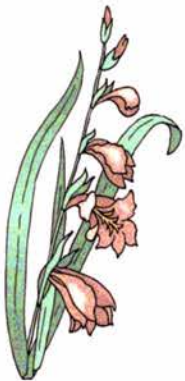
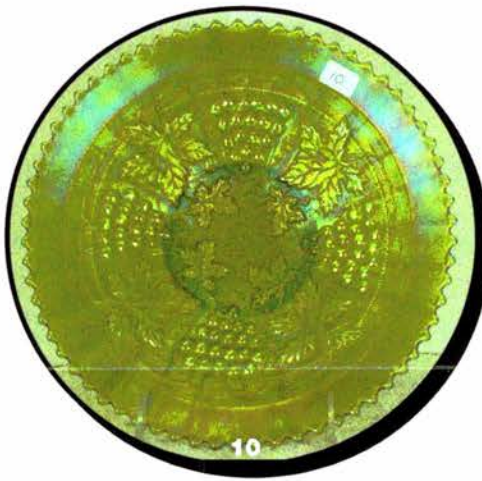


Auction



Carnival Glass
Saturday, May 17th, 2008 - 9:30 AM



Senior Activity Center
326 4th St NE
Mason City, Iowa





Carnival Glass Auction

Senior Activity Center – Mason City, Iowa

326 4th St NE

(From South: Take US Hwy 65 into Mason City and turn right or East on 4th ST NE, go 2 blocks)

(From North: Take US Hwy 65 into Mason City and turn left or East on 4th ST NE, go 4 blocks)

(This building is next to the Charlie Brown Daycare play yard)

Preview: Friday, May 16th, 3 pm – 6 pm

NO BUYER'S PREMIUM

OPEN TO THE PUBLIC

Seeck Auctions is pleased to be selling the Shirley and late Joe Williams's collection of Carnival Glass from Iowa. Joe and Shirley were frequent attendees of the HOACGA convention and did several beautiful displays with their bonbons and compotes. We have also added a small estate of glass from Cedar Falls, Iowa and together they make a very nice auction.

**For Lots of Color Pictures Check our WEBSITE:
www.seeckauction.com**

* Please email us and we can put you on our Internet mailing list for auction updates and notices. (Please indicate Carnival Glass)

Lodging: Mason City: Comfort Inn – (641)423-4444; Country Inn & Suites – (641)423-1770; Super 8 – (641)423-8855; Holiday Inn – (641)423-1640; Clear Lake: AmericInn – (641)357-8954; Best Western Holiday Lodge (641)357-5253.

Terms: Cash or Check, VISA and MasterCard accepted w/proper ID. **3% Clerking Fee** on all purchases except for payment of cash or check. Announcements made day of sale take precedence over any printed information.

JIM & JAN SEECK
641-424-1116

Seeck Auctions

EMAIL:
jimjan@seeckauction.com

ABSENTEE BID POLICY

1. Write-in bids will be accepted by sending the numbers of the item(s) desired and the amount bid on each to:
Seeck Auctions, PO Box 377, Mason City, Iowa 50402.
2. You may call in your bids previous to the auction at (641)424-1116. (this is not live phone bidding)
3. You may **email** your bids to us: **jimjan@seeckauction.com** Include the numbers of the item(s) you would like to bid on and amount bid on each, please include your telephone number.
4. Live phone bidding is available. Bidding must start on item at \$500. Please call for details.
5. There is a \$7 handling charge for each successful bid. Shipping and insurance charges are additional.
6. Bidders will be notified by phone/email if their bid(s) are successful. This will be done 1 - 3 days after the auction.
7. Please have all bids in by **Thurs., May 15th**. All bids (by mail, phone or **email**) after this date may not be carried out.
8. Please place bids in the following increments: \$1 to \$300 - \$5 increments \$300 up - \$25 increments.
9. **If you do not receive an item that sold for less than your bid, assume we cancelled your bid because the piece of glass had below average color, manufacture problem, damage or was not listed correctly.**
10. Auction results are posted on our website within 2 weeks of the auction.

- ___ 1. Wreath Of Roses ruffled compote - green
- ___ 2. Wreath Of Roses ruffled compote - blue
- ___ 3. Wreath Of Roses ruffled compote - marigold
- ___ 4. Colonial candlesticks - marigold
- ___ 5. Louisa rose bowl - green
- ___ 6. Thin Rib & Drape 5 " vases(2) - marigold - choice
- ___ 7. Footed Prism Panels - vase - marigold
- ___ 8. Milady covered powder jar - marigold
- ___ 9. Large Footed Shell - marigold
- ___ **10. Stippled Grape & Cable 9" plate w/ribbed back - green - not quite emerald, but super pretty**
- ___ 11. Stippled Rays rose bowl - marigold - scarce
- ___ 12. Constellation ruffled compote - marigold
- ___ 13. Constellation ruffled compote - white
- ___ 14. Wreath of Roses bonbon - green
- ___ **15. Octagon small size round compote - purple - very scarce & nice**
- ___ **16. Octagon small size round compote - aqua - very rare color**
- ___ 17. Butterflies card tray shaped bonbon - amethyst
- ___ 18. Butterflies card tray shaped bonbon - marigold
- ___ **19. Imperial Grape ruffled compote - smoke - nice**
- ___ **20. Imperial Grape ruffled compote - purple - pretty**
- ___ **21. Imperial Grape ruffled compote - lavender - scarce color**
- ___ 22. Imperial Grape ruffled compote - amber - super
- ___ 23. Imperial Grape ruffled compote - green
- ___ 24. Imperial Grape ruffled compote - marigold
- ___ **25. NUART Chrysanthemum chop plate - marigold - dark & super, has stretchy irid.**
- ___ 26. Holly ruffled compotes(2) - blue - choice
- ___ 27. Question Mark bonbon - purple
- ___ 28. Question Mark bonbons (2) - marigold - choice
- ___ 29. Oval Star & Fan rose bowl - marigold
- ___ **30. Fluffy Peacock 5 pc. water set - green - scarce, nice**
- ___ 31. Target 12" vase - blue - scarce color
- ___ 32. Target 12" vases(2) - marigold - choice
- ___ 33. Wild Rose Open Edge bowl - blue - scarce color
- ___ 34. Wild Rose Open Edge bowl - green - flatter then most
- ___ **35. Captive Rose 9" plate - marigold - very pretty plate, scarce**
- ___ **36. Captive Rose 9" plate - blue - silvery**
- ___ 37. Sailboat large ruffled compote - blue - scarce color
- ___ 38. Sailboat ruffled compote - marigold
- ___ 39. Beaded Star rose bowl - marigold
- ___ **40. Fine Cut & Roses candy dish - aqua opal - feet have normal nicks, butterscotch & beautiful**
- ___ 41. Fine Cut & Roses candy dish - ice blue
- ___ 42. Fine Cut & Roses candy dish - white - normal feet
- ___ 43. Fine Cut & Roses candy dish - purple
- ___ 44. Cathedral or Curved Star celery vase or chalice - marigold
- ___ 45. Orange Tree loving cup - blue - handle damage
- ___ **46. Orange Tree loving cup - marigold - dark, nice**
- ___ 47. Stretch glass candleholder bowl - Celeste blue
- ___ 48. Stork & Rushes mug - marigold
- ___ 49. Floral & Grape tumblers (3) - blue - choice
- ___ **50. N's Peacock at Urn master IC bowl - blue - very rare & highly desirable, nice**
- ___ **51. N's Peacock at Urn master IC bowl - purple - scarce**
- ___ 52. Beaded Cable rose bowl w/rayed interior - green
- ___ 53. Beaded Cable rose bowl w/rayed interior - purple
- ___ 54. Beaded Cable rose bowl w/rayed interior - marigold
- ___ 55. Lattice & Grape tankard water pitcher - marigold, hairline by handle
- ___ 56. Lattice & Grape tumbler - marigold
- ___ **57. Scroll Embossed small size ruffled compote - purple - pretty**
- ___ 58. Scroll Embossed small size ruffled compotes (2) - green - choice
- ___ 59. Peacock Tail 9" 3 in 1 edge bowl - amethyst
- ___ **60. Imperial Grape water carafe - purple - super pretty**
- ___ 61. Imperial Grape water carafe - marigold - nice
- ___ 62. M'burg Peacock Tail Variant ruffled compote - green - radium
- ___ 63. M'burg Peacock Tail Variant ruffled compote - amethyst - radium & super
- ___ 64. M'burg Peacock Tail Variant ruffled compote - marigold - satin
- ___ **65. Leaf & Beads rose bowl - aqua opal - scarce**
- ___ 66. Leaf & Beads rose bowl - amethyst
- ___ 67. Leaf & Beads rose bowl - blue - nice
- ___ 68. Leaf & Beads rose bowl w/Sunflower interior - marigold
- ___ 69. Leaf & Beads rose bowls w/rayed interior (2) - green - choice
- ___ **70. Greek Key ruffled bowl w/basketweave back - purple - super**
- ___ 71. Singing Birds mug - purple
- ___ 72. Maple Leaf 5 pc. berry set - purple - nice
- ___ 73. Dahlia ftd berry dish - white
- ___ 74. Smooth Rays 9" round bowl - amethyst
- ___ **75. Butterfly & Fern water pitcher - blue - very nice, scarce**
- ___ 76. Butterfly & Fern tumblers (2) - blue - choice
- ___ **77. Butterfly & Fern water pitcher - green - very nice, scarce**
- ___ 78. Butterfly & Fern tumblers (2) - green - choice
- ___ **79. Butterfly & Fern water pitcher - amethyst - scarce, nice**
- ___ 80. Butterfly & Fern tumblers (2) - amethyst - choice
- ___ **81. Butterfly & Fern water pitcher - marigold - scarce & nice**
- ___ 82. Iris ruffled compote - green
- ___ 83. Iris ruffled compote - marigold
- ___ 84. Imperial Grape 6" plates (3) - marigold - choice
- ___ **85. Cosmos & Cane 7 pc. berry set - honey amber - nice set, scarce**
- ___ **86. Captive Rose ruffled compote - white - super nice, scarce**
- ___ 87. Captive Rose ruffled compote - marigold - dark
- ___ 88. Captive Rose crimped edge ruffled compote - blue
- ___ 89. Captive Rose crimped edge ruffled compote - amethyst
- ___ **90. Stippled Three Fruits spt ftd ruffled bowl - aqua opal - very pretty & scarce**
- ___ 91. Daisy & Plume stemmed rose bowl - marigold
- ___ 92. Raindrops 3 in 1 edge bowl - peach opal
- ___ 93. Dragon & Lotus IC shaped bowl - blue - nice
- ___ 94. Stippled Rays dome ftd crimped edge tri-cornered bowl - amethyst
- ___ **95. Bullseye & Beads 7 1/2" vase - purple - has wide mouth, super**
- ___ **96. Beaded Bullseye 8" vase - marigold - nice**

- ___ 97. Grape Delight ftd rose bowl - white - nick on one foot
- ___ 98. Grape Delight ftd rose bowl - purple
- ___ 99. Grape Delight ftd rose bowl - blue
- ___ **100. Peacock at the Fountain ruffled compote - white - very scarce & highly desirable**
- ___ **101. Peacock at the Fountain ruffled compote - purple - scarce, nice**
- ___ 102. Star of David & Bows domed ftd ruffled bowl - amethyst
- ___ 103. Kittens cup & saucer - marigold
- ___ 104. Puzzle round bonbon - peach opal
- ___ **105. Blackberry Open Edge card tray shaped dish - red - scarce**
- ___ 106. Blackberry Open Edge card tray shaped dish - powder blue
- ___ 107. Blackberry Open Edge card tray shaped dish - marigold
- ___ 108. Daisy Squares crimped edge tri-cornered top rose bowl - green - rare
- ___ 109. Smooth Panels 5" vase - marigold
- ___ **110. Thistle banana boat shaped ftd bowl - blue - super**
- ___ 111. Windmill milk pitcher - marigold
- ___ 112. Grape & Cable ruffled hatshape - green
- ___ 113. Crab Claw 7 pc. water set - marigold - nice
- ___ 114. Louisa ftd 9" plate - amethyst
- ___ **115. Fenton's Peacock at Urn ruffled compotes (2) - white - nice, choice**
- ___ 116. Fenton's Peacock at Urn ruffled compote - lime green w/marigold overlay
- ___ 117. Fenton's Peacock at Urn ruffled compotes (3) - blue - choice
- ___ 118. Fenton's Peacock at Urn ruffled compotes (2) - marigold - choice
- ___ 119. Sunflower & Diamonds vase - marigold
- ___ **120. M'burg Trout & Fly 3 in 1 edge - marigold - satin, nice**
- ___ 121. Beaded Panels crimped edge tri-cornered compote - marigold
- ___ 122. Blackberry Spray ruffled hat - blue
- ___ 123. Grape & Cable 11" ruffled bowl - purple - scarce, choice
- ___ 124. Hattie deep round bowl - marigold
- ___ **125. M'burg Leaf & Little Flowers ruffled compote - green - radium, minor polishing on base**
- ___ **126. Leaf & Little Flowers ruffled compote - amethyst - radium, nice**
- ___ **127. M'burg Leaf & Little Flowers ruffled compote - marigold - radium, nice**
- ___ 128. Lattice & Points 8 1/2" vase - purple - nice
- ___ 129. Peacock Tail bonbon - marigold
- ___ 130. Persian Medallion bonbon - amberina - minor separation at seam of base
- ___ 131. Persian Medallion bonbon - lime green w/marigold overlay
- ___ 132. Persian Medallion bonbon - green
- ___ 133. Persian Medallion bonbons (2) - marigold - choice
- ___ 134. Double Stemmed Rose dome ftd ruffled bowl - marigold - choice
- ___ **135. M'burg Fleur De Lis dome ftd crimped edge tri-cornered bowl - marigold - radium & rare, nice**
- ___ 136. Imperial Grape 6 pc. ruffled berry set - green
- ___ 137. Petals ruffled compote - green
- ___ 138. Grape & Cable Variant 9" plate w/BW back - marigold - nice
- ___ 139. Stippled Robin mug - marigold
- ___ **140. N's Peacock at Urn IC sauce - ice green - very nice**
- ___ **141. N's Peacock at Urn IC sauce - white - very pretty**
- ___ **142. N's Peacock at Urn IC sauce - blue - also very pretty**
- ___ **143. N's Peacock at Urn IC sauce - purple - fantastic**
- ___ 144. Acorn ruffled bowl - amber - scarce color
- ___ **145. Scroll Embossed large ruffled compote - violet - very rare color, pretty**
- ___ 146. Scroll Embossed large ruffled compote - marigold
- ___ 147. Peach & Pear banana boat shaped large berry bowl in silver plated holder - marigold
- ___ 148. Cherry Chain large ruffled bowl - blue - nice
- ___ 149. Pinecone round sauce - amethyst
- ___ **150. N's Corn vase w/plain base - purple - scarce**
- ___ **151. N's Corn vase w/stalk base - ice green - nice**
- ___ 152. Birds & Cherries ruffled compote - amethyst
- ___ 153. Birds & Cherries ruffled compote - green
- ___ 154. Ripple 5" vase - marigold - miniature
- ___ **155. Grape & Cable 7 pc. water set - purple**
- ___ 156. Graceful vase - marigold
- ___ 157. Grape & Cable Dresser tray - purple - nice
- ___ 158. Blackberry Bramble ruffled compote - amethyst
- ___ 159. Miniature Morning Glory 5" vase - marigold
- ___ 160. Persian Medallion large size crimped edge ruffled compote - green - scarce, nice
- ___ 161. Persian Medallion large size crimped edge ruffled compote - amethyst - nice
- ___ 162. Persian Medallion large size crimped edge ruffled compote - blue - pretty
- ___ 163. Persian Medallion large size crimped edge ruffled compote - marigold
- ___ 164. Starfish bonbon - amethyst
- ___ **165. Sunflower spt ftd ruffled bowl - ice blue - very rare & pretty, chip on edge**
- ___ **166. Sunflower spt ftd ruffled bowl - green - not quite emerald, but fantastic**
- ___ **167. Sunflower spt ftd ruffled bowl - purple - fantastic**
- ___ 168. Rustic mid-size 16" vase - green
- ___ 169. Rustic mid-size 16" vase - marigold
- ___ **170. Concave Diamonds 7 pc. lidded water set - celeste blue - has the original Jewel T box with it, rare**
- ___ 171. M'burg Holly card tray shaped bonbon - green - satin
- ___ 172. M'burg Peacock at Urn 3 in 1 edge 10" bowl - green - satin, repaired chip
- ___ 173. Wreath of Roses rose bowl - marigold
- ___ 174. Garland rose bowl - blue
- ___ **175. Heart & Vine 9" plate - blue - very scarce, nice**
- ___ 176. Grapevine Lattice 6" ruffled bowl - white
- ___ 177. Fenton's Flowers rose bowl - amethyst - minor nicks on toes
- ___ 178. Fenton's Flowers rose bowl - blue - toe nicks
- ___ 179. Fenton's Flowers rose bowl - marigold
- ___ **180. Poppy Show 9" plate - marigold - light color, but scarce**
- ___ 181. M'burg Blackberry Wreath 8" 3 in 1 edge bowl - marigold - satin
- ___ **182. Stippled Good Luck ruffled bowl w/ribbed back - blue - scarce, nice**

- ___ 183. Leaf Chain 9" plate - green - silvery
 ___ 184. Louisa rose bowl - green
 ___ **185. Raspberry water pitcher - green - very nice pitcher, scarce**
 ___ 186. Raspberry tumblers(2) - green - choice
 ___ 187. Soda Gold tumbler - smoke - scarce color
 ___ 188. Windmill milk pitcher - smoke - pretty
 ___ 189. Two Flowers large size deep ftd bowl - blue - pretty
 ___ 190. M'burg Boutonniere ruffled compote - amethyst - radium, nice
 ___ 191. M'burg Boutonniere ruffled compote - green - radium
 ___ 192. M'burg Boutonniere ruffled compote - marigold - radium
 ___ 193. Estate vase - smoke
 ___ 194. Imperial Grape cup & saucers (2) - marigold - choice
 ___ **195. M'burg Hobstar & Feather giant rose bowl - green - extremely rare, stem has been cracked and glued back together**
 ___ 196. Butterfly & Berry master berry bowl - marigold
 ___ 197. Peacock & Grape spt ftd ruffled bowl - green
 ___ 198. Dugan Cherries 10" ruffled bowl - peach opal
 ___ 199. Stippled Petal 7" ruffled bowl - peach opal
 ___ **200. Poppy Show ruffled bowl - ice blue - super pretty & rare**
 ___ 201. Blackberry Bramble ruffled compotes (3) - green - choice
 ___ 202. Blackberry Bramble ruffled compotes (2) - amethyst - choice
 ___ 203. Blackberry Bramble ruffled compote - marigold
 ___ 204. Fashion rose bowl - marigold
 ___ 205. Holly 9" plate - blue
 ___ 206. Holly 9" plate - marigold
 ___ **207. Ripple 9" vase, 3 3/8" base - purple - fantastic**
 ___ 208. M'burg Diamonds tumbler - aqua
 ___ 209. Imperial Flute tumbler - purple
 ___ 210. M'burg Nesting Swan ruffled bowl - green - satin, scarce
 ___ 211. M'burg Nesting Swan ruffled bowl - amethyst - satin
 ___ 212. Octagon small size water pitcher - marigold - heat check in base
 ___ 213. Stag & Holly spt ftd IC shaped bowl - marigold
 ___ 214. Fine Cut & Roses rose bowl - purple - silvery
 ___ **215. Holly ruffled hatshape - red - scarce color**
 ___ 216. Holly ruffled hatshape - lime green
 ___ 217. Pansy low ruffled bowl - lavender - super pretty, many would call a plate
 ___ 218. Pansy ruffled bowl - purple - super
 ___ 219. Rising Sun juice glass - marigold
 ___ **220. Apple Blossom Twigs 9" plate - blue - scarce**
 ___ 221. Apple Blossom Twigs dome ftd 3 in 1 edge bowl - white
 ___ 222. Strawberry 9" plate w/BW back - green
 ___ 223. Strawberry 9" plate w/BW back - marigold
 ___ 224. Candlevase candlesticks - ice green
 ___ **225. M'burg Rosalind small size ruffled compote - green - satin & very nice**
 ___ 226. Persian Medallion rose bowl - white - scarce color
 ___ 227. Persian Medallion rose bowl - blue - nice
 ___ 228. Persian Medallion hair receiver - marigold
 ___ 229. M'burg Holly Sprig card tray shaped bonbon - green - radium & nice
 ___ **229A. Fruits & Flowers bonbon - lavender - scarce color, nice**
 ___ **230. Fruits & Flowers bonbon - blue - super**
 ___ **231. Fruits & Flowers bonbon - purple - fantastic**
 ___ **232. Fruits & Flowers bonbon - green**
 ___ 233. Diamond Points 7 1/2" squatty vase - blue - rare color, nice
 ___ 234. Diamond Points 7 1/2" squatty vase - marigold
 ___ 235. Fenton's Grape & Cable fruit bowl w/Persian Medallion interior - amethyst
 ___ 236. Stag & Holly lg size ftd IC shaped bowl - marigold
 ___ 237. M'burg Primrose ruffled bowl - green - satin, nick on edge
 ___ 238. Imperial Grape deep round bowl - marigold
 ___ 239. Windflower 9" plate - marigold
 ___ **240. Stippled Grape & Cable Variant / Old Rose Distillery 9" plate w/ribbed back - green - scarce, pretty**
 ___ 241. Westmoreland Flute 7" vase - amethyst - super neat vase
 ___ 242. Raspberry ruffled compote - green
 ___ 243. Raspberry ruffled compotes (2) - purple - choice
 ___ 244. Raspberry ruffled compotes (2) - marigold - choice
 ___ 245. Persian Garden ruffled fruit bowl top - purple - nick on point
 ___ 246. Thistle crimped edge ruffled compote - blue
 ___ 247. Round Up ruffled bowl - white - point chipped off
 ___ 248. Grape Delight ruffled bowl - purple - nice
 ___ 249. Mary Ann vase - marigold
 ___ **250. Acorn Burrs 7 pc. water set - purple - scarce & nice**
 ___ 251. N's Butterfly bonbon w/plain back - green
 ___ 252. N's Butterfly bonbon w/plain back - purple
 ___ 253. N's Butterfly bonbon w/plain back - marigold
 ___ 254. Pulled Loop 8 1/2" vase - amethyst
 ___ **255. Peacock at the Fountain 6 pc. berry set - white - very rare set & nice**
 ___ 256. Waterlily ftd ruffled sauce - marigold
 ___ 257. Little Fishes IC shaped ftd master berry bowl - marigold
 ___ 258. Windflower ruffled bowl - blue - scarce color
 ___ 259. Smooth Rays banana boat shaped sauce - peach opal - has Jeweled Heart exterior
 ___ **260. Morning Glory 15 1/2" vase - marigold - super pretty, even from top to bottom**
 ___ 261. Cherry Chain card tray shaped bonbon - blue
 ___ 262. Cherry Chain card tray shaped bonbon - marigold
 ___ **263. M'burg Hobnail rose bowl - marigold - super nice**
 ___ 264. Stippled Rays deep round compotes (2) - green - unusual, choice
 ___ **265. Good Luck 9" plate w/BW back - purple - scarce, nice**
 ___ 266. Vintage 9" ruffled bowl - green
 ___ 267. Enameled Cherry & Little Flowers 7 pc. water set - blue
 ___ 268. M'burg Holly Spring tri-cornered hldd nappy - marigold - satin, nice
 ___ 269. Persian Medallion hair receiver - marigold
 ___ **270. Inverted Strawberry small size compote - amethyst - rare color & rare shape, neat**
 ___ 271. Captive Rose 3 in 1 edge bowl - amethyst
 ___ **272. Inverted Thistle tumbler - amethyst - scarce**
 ___ **273. Inverted Strawberry tumbler - amethyst - scarce**
 ___ **274. Inverted Strawberry tumbler - marigold - scarce**

- ___ 275. Hearts & Flowers ruffled compote - ice green - very scarce, highly desirable
 ___ 276. Hearts & Flowers ruffled compotes (2) - aqua opal - choice
 ___ 277. Hearts & Flowers ruffled compote - blue - pretty
 ___ 278. Hearts & Flowers ruffled compote - purple - pretty
 ___ 279. Hearts & Flowers ruffled compote - marigold
 ___ 280. Hearts & Flowers ruffled compote - white
 ___ 281. Springtime tumbler - green
 ___ 282. Holly 3 in 1 edge bowl - blue
 ___ 283. Flowers & Frames dome ftd bowl - purple - electric & super
 ___ 284. Kittens 2 sides up dish - marigold
 ___ 285. Paneled Dandelion 7 pc. water set - marigold - scarce, nice
 ___ 286. Chrysanthemum lg ftd ruffled bowl - marigold
 ___ 287. Leaf Rays tri-cornered nappy - white
 ___ 288. Leaf Rays tri-cornered nappy - peach opal
 ___ 289. Leaf Rays tri-cornered nappy - marigold
 ___ 290. Blackberry Open Edge square shaped basket - red - scarce shape
 ___ 291. Stippled Singing Birds mug - marigold - pretty
 ___ 292. Two Flowers spt ftd rose bowl - purple - rare color
 ___ 293. Two Flowers spt ftd rose bowl - blue - scarce
 ___ 294. Two Flowers spt ftd rose bowl - marigold - nice
 ___ 295. Victorian lg ruffled bowl - purple - very nice, scarce
 ___ 296. Raspberry gravy boat - purple
 ___ 297. Beads ruffled bowl - green
 ___ 298. Chrysanthemum lg ftd IC shaped bowl - blue - super pretty
 ___ 299. Leaf & Beads ftd nut bowl - green
 ___ 300. N's Peacock at the Fountain water pitcher - blue - pretty & scarce
 ___ 301. Dugan Peacock at the Fountain tumblers (8) - blue - choice
 ___ 302. N's Peacock at the Fountain water pitcher - purple
 ___ 303. N's Peacock at the Fountain tumblers (2) - purple - choice
 ___ 304. Greek Key tumbler - marigold
 ___ 305. Acanthus deep round bowl - purple - super pretty
 ___ 306. Horse Medallion ftd ruffled bowl - marigold - nice
 ___ 307. Blossomtime ruffled compote - green - scarce color
 ___ 308. Blossomtime ruffled compote - purple
 ___ 309. Blossomtime ruffled compote - marigold - nice
 ___ 310. Tornado small size vase - marigold - scarce, nice
 ___ 311. Ski Star lg ruffled bowl - peach opal
 ___ 312. Grape & Cable cologne bottle - purple - scarce
 ___ 313. Grape & Cable hatpin holder - purple
 ___ 314. Orange Tree shaving mug & Vintage Banded mug - marigold - choice
 ___ 315. Three Fruits spt ftd ruffled bowl - green - pretty
 ___ 316. Flute breakfast cream & sugar - purple - super
 ___ 317. Persian Medallion small size ruffled compote - amethyst
 ___ 318. Persian Medallion small size ruffled compotes (2) - blue - choice
 ___ 319. Miniature Intaglio almond cup w/Souvenir of Casey, Iowa
 ___ 320. Peacocks 9" plate w/ribbed back - ice green - nice
 ___ 321. Wreathed Cherry master banana boat - purple - lg chip on edge
 ___ 322. Wreathed Cherry banana boat sauce - marigold
 ___ 323. Many Fruits ruffled punch bowl base - purple - very hard to find if you need one
 ___ 324. Fluffy Peacock cvd creamer & sugar - amethyst - one lid has nick
 ___ 325. Dandelion 6 pc. tankard water set - marigold - dark, beautiful set
 ___ 326. Cherry Circles round bonbon - marigold - pretty
 ___ 327. Open Rose rose bowl - amber
 ___ 328. M'burg Poppy compote - amethyst - satin, scarce
 ___ 329. Beaded Bullseye 11" vase - marigold
 ___ 330. Round Up 9" plate - blue - scarce
 ___ 331. Vintage 3 in 1 edge bowl - marigold
 ___ 332. Tree Trunk 10" vase - green
 ___ 333. Golden Harvest wine decanter - marigold
 ___ 334. Grape & Cable cvd compote base - purple - no lid
 ___ 335. Six Petal tri-cornered bowl - purple - super pretty
 ___ 336. Diamond & Column 15" vase - blue - incredible
 ___ 337. Orange Tree w/trunk ruffled bowl - marigold
 ___ 338. Lotus & Grape card tray shaped bonbon - marigold
 ___ 339. Imperial Grape 7 pc. wine set - marigold
 ___ 340. Orange Tree ruffled fruit bowl - marigold
 ___ 341. Little Flowers 3 in 1 edge bowl - amethyst
 ___ 342. Blackberry Open Edge ruffled hat - green
 ___ 343. Stream of Hearts ruffled compote - marigold
 ___ 344. Vintage fernery - green
 ___ 345. Acanthus chop plate - marigold
 ___ 346. Wild Berry powder jar w/lid - marigold - super nice
 ___ 347. Pastel Panels tumbler - celeste blue
 ___ 348. Luster Rose water pitcher - clambroth - very nice
 ___ 349. Circle Scroll JIP hatshape - purple - super
 ___ 350. Dreibus Parfait Sweets adv. ruffled bowl - amethyst - scarce & desirable, has a lavender look
 ___ 351. Vintage powder jar - marigold
 ___ 352. Fan open sugar - peach opal
 ___ 353. Waterlily master ftd ruffled bowl - blue - nice
 ___ 354. Beaded Shell mug - amethyst
 ___ 355. NUART Homestead chop plate - marigold - very scarce, very nice
 ___ 356. Apple Tree tumbler - white
 ___ 357. Fern ruffled compote - green - nice
 ___ 358. Fern ruffled compote - amethyst
 ___ 359. Fern ruffled compote - marigold
 ___ 360. M'burg Little Star ruffled bowl - green - satin
 ___ 361. Persian Medallion 10" 3 in 1 edge bowl - blue
 ___ 362. Grape & Cable sweetmeat - purple
 ___ 363. Thistle CRE bowl - blue
 ___ 364. Vintage small size epergne - blue - lily stuck in base, looks mint
 ___ 365. Basketweave Open Edge ruffled hat - red - scarce
 ___ 366. Basketweave Open Edge ruffled hat - white
 ___ 367. Basketweave Open Edge ruffled hats (2) - lime green - choice
 ___ 368. Basketweave Open Edge ruffled basket - amethyst
 ___ 369. Basketweave Open Edge ruffled basket - blue
 ___ 370. Basketweave Open Edge ruffled baskets (2) - marigold - choice
 ___ 371. Fisherman's mug - purple
 ___ 372. Three Fruits 9" plate w/BW back - purple
 ___ 373. Big Basketweave basket - marigold
 ___ 374. Autumn Acorn ruffled bowl - amethyst

- ___ 375. N's Harvest Poppy ruffled compote - purple - scarce
 ___ 376. N's Harvest Poppy ruffled compote - marigold - pretty
 ___ 377. Mikado ruffled compote - marigold
 ___ 378. Question Mark round compote - white - scarce shape & nice
 ___ 379. Star Medallion milk pitcher - smoke
 ___ 380. Ribbon Tie 3 in 1 edge bowl - blue
 ___ 381. Coin Dot deep round bowl - amethyst
 ___ 382. M'burg Whirling Leaves ruffled bowl - green - edge chip
 ___ 383. Wreath of Rose ruffled compote - green
 ___ 384. Grape Delight nut bowl - purple - one foot has slight polish
 ___ 385. Drapery rose bowl - white - scarce color
 ___ 386. Drapery rose bowl - aqua opal - nice
 ___ 387. Drapery rose bowl - amethyst - nice
 ___ 388. Drapery rose bowl - marigold - rare color & nice
 ___ 389. Palm Beach 4" sauce w/Gooseberry interior - white
 ___ 390. Panther ruffled master berry bowl - marigold - nice
 ___ 391. Pepper Plant ruffled hat - blue - silvery
 ___ 392. Heavy Grape chop plate - marigold - pretty
 ___ 393. Sunflower spt ftd ruffled bowl - green
 ___ 394. Cosmos ruffled bowl - marigold
 ___ 395. Daisy Squares crimped edge rose bowl - marigold - scarce
 ___ 396. Daisy & Plume rose bowl - white - one foot has damage
 ___ 397. Daisy & Plume rose bowl - blue - minor nick on foot
 ___ 398. Daisy & Plume rose bowl - marigold - fantastic, nick on rib of foot
 ___ 399. Daisy & Plume rose bowl w/rayed interior - green
 ___ 400. Curved Star 12" tray - blue - scarce piece, probably held a decanter set
 ___ 401. Octagon decanter - marigold
 ___ 402. M'burg Rays & Ribbons ruffled bowl - amethyst
 ___ 403. Inverted Feather cracker jar - green - chip on base
 ___ 404. Fenton Peacock at Urn goblet shaped compote - marigold
 ___ 405. Beaded Cable rose bowl - white - scarce color
 ___ 406. Beaded Cable rose bowl - aqua opal - nice
 ___ 407. Beaded Cable rose bowl - blue
 ___ 408. Beaded Cable rose bowl - purple
 ___ 409. Beaded Cable rose bowl - marigold
 ___ 410. Curved Star 9" rose bowl shaped bowl - blue - chip on point
 ___ 411. Thistle ruffled bowl - green
 ___ 412. Iris ruffled compote - green
 ___ 413. Ten Mums 3 in 1 edge bowl - amethyst - nice
 ___ 414. Twins fruit bowl - marigold
 ___ 415. N's Bushel Basket - white
 ___ 416. N's Bushel Basket - purple
 ___ 417. Grape & Cable powder jar - green
 ___ 418. Miniature Scroll Embossed goblet shaped compote - purple - scarce
 ___ 419. Horse Medallion ftd rose bowl - marigold
 ___ 420. Horse Medallion JIP ftd bowl - blue
 ___ 421. Persian Medallion deep round saucers (6) - blue - choice
 ___ 422. Drapery candy dish - white - nice
 ___ 423. Star Medallion milk pitcher - marigold
 ___ 424. Knotted Beads crimped edge 9" vase - marigold
 ___ 425. Daisy & Drape flared out vase - aqua opal - butterscotch & super
 ___ 426. Daisy & Drape flared in vase - white - nice
 ___ 427. Blackberry & Rays ruffled compote - purple - scarce
 ___ 428. Palm Beach rose bowl w/Gooseberry interior - white w/silver edge
 ___ 429. Three Fruits PCE bowl w/BW back - purple
 ___ 430. Wishbone ftd ruffled bowl - purple
 ___ 431. Fishscale & Beads ruffled bowl - marigold
 ___ 432. Feathered Serpent lg ruffled bowl - amethyst
 ___ 433. Pansy hdd nappy - marigold
 ___ 434. Ftd Fine Rib JIP vase - marigold
 ___ 435. Fine Cut & Roses rose bowl - white - frosty & pretty
 ___ 436. Fine Cut & Roses rose bowl - ice blue - pretty
 ___ 437. Fine Cut & Roses rose bowl - green
 ___ 438. Fine Cut & Roses rose bowls (2) - purple - choice, one has fancy interior
 ___ 439. Fine Cut & Roses rose bowl - marigold
 ___ 440. Four Flowers 9" plate - purple - scarce
 ___ 441. Diamond & Columns 10" vase - marigold
 ___ 442. Heron mug - purple
 ___ 443. Open Rose deep round bowl - marigold
 ___ 444. Thistle & Thorn ftd nut bowl - marigold
 ___ 445. Amaryllis ftd plate - marigold - rare
 ___ 446. Rococco vase - marigold
 ___ 447. Stippled Three Fruits PC bowl w/BW back - purple - scarce
 ___ 448. Orange Tree hatpin holder - marigold
 ___ 449. Orange Tree powder jar - marigold
 ___ 450. Spector's Department Store Heart & Vine 9" plate - marigold - very nice plate, scarce & highly desirable
 ___ 451. Rose Bouquet bonbon - white - rare, a dandy
 ___ 452. Miniature Morning Glory 5" vase - purple - super
 ___ 453. Miniature Morning Glory 5 1/2" vase - smoke
 ___ 454. Miniature Morning Glory 7" vase - green
 ___ 455. Miniature Morning Glory 5" & 7" vases - marigold - choice
 ___ 456. Coin Spot ruffled compote - purple - nice
 ___ 457. Coin Spot ruffled compote - lime green - rare color
 ___ 458. Coin Spot ruffled compote - peach opal
 ___ 459. M'burg Hobnail Swirl 10" vase - marigold - minor peeling on top edge
 ___ 460. Peacocks PCE bowl w/ribbed back - blue - scarce
 ___ 461. Chessie Cats - vaseline, purple & red - choice
 ___ 462. Misc. marigold pcs. - choice
 ___ 463. Misc. Carnival pcs. - choice
 ___ 464. Misc. Carnival pcs. - choice
 ___ 465. Misc. Carnival pcs. - choice
 ___ 466. Misc. Carnival pcs. - choice
 ___ 467. Contemporary items - choice



P.O. Box 377
Mason City, Iowa 50402

PRESORTED
FIRST-CLASS MAIL
U.S. POSTAGE PAID
MINNEAPOLIS, MN
PERMIT NO. 28534

T4 P1 *****AUTO**MIXED AADC 553
Lee Markley
PO Box 306
Mentone, IN 46539-0306

