

# *Keystone Carnival Glass Convention Auction*

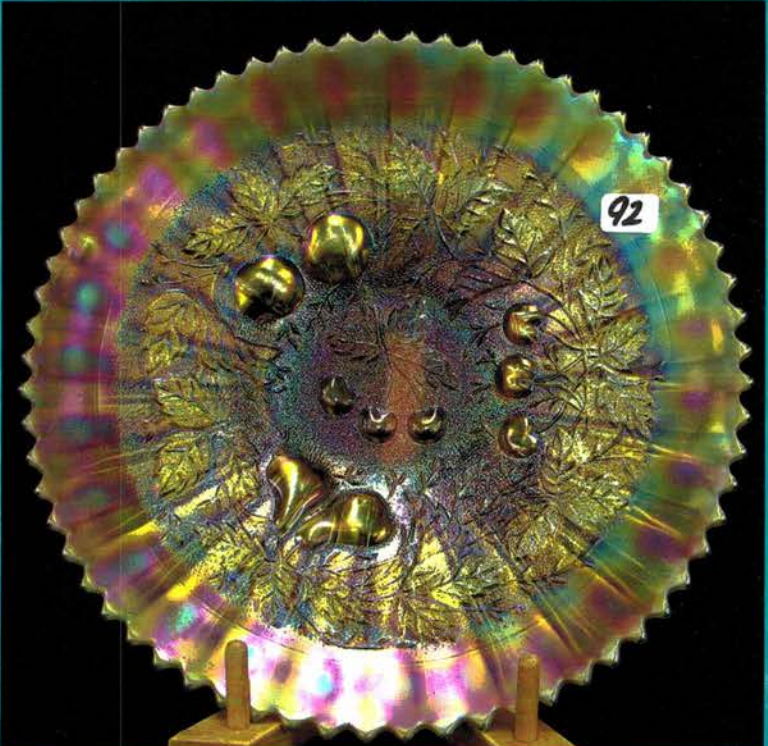
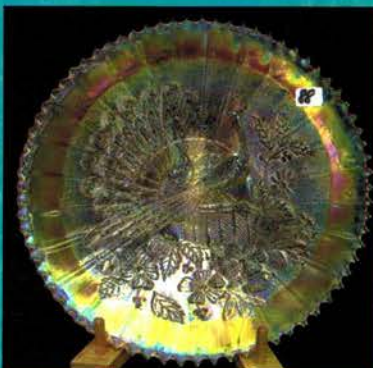
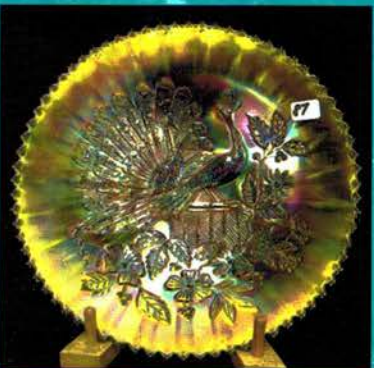
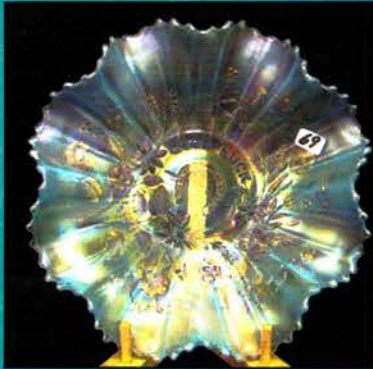
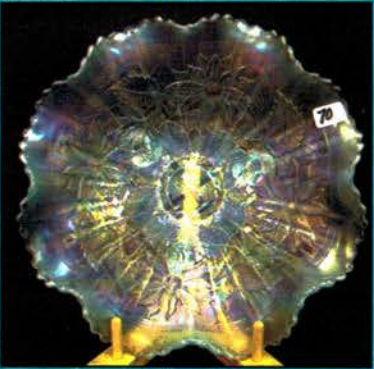
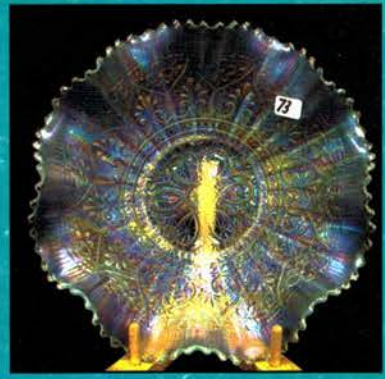
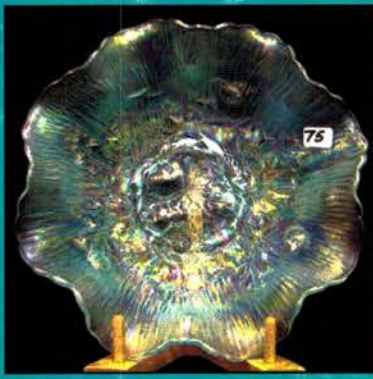
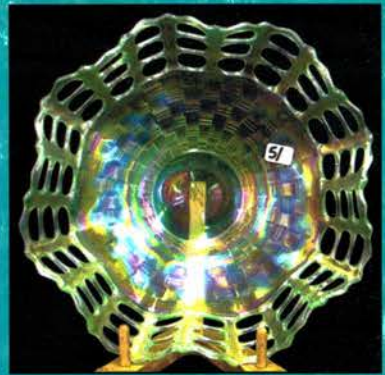
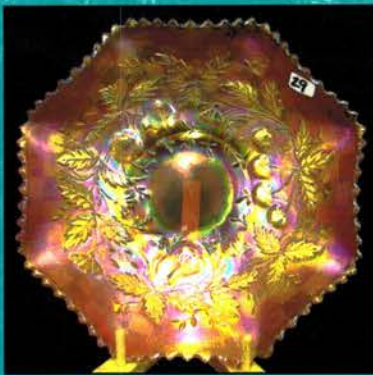


*Jim Wroda Auction Services*

5239 St. Rt. 49 South, Greenville, OH 45331

*Golden Gate Bridge,  
Vol. 4, Series 2008*







# Keystone Carnival Glass Convention Auction

(This is a public auction. You do not need to be a member of Keystone to participate in the auction.)

**Saturday, May 3<sup>rd</sup>, 2008 at 9:45 a.m.**

*Preview Friday, May 2<sup>nd</sup>, 2008 10am to 3pm and Saturday morning at 8:00 a.m. till auction time*

**Harrisburg Holiday Inn Hotel & Conference Center**

**New Cumberland, PA**

148 Sheraton Drive, New Cumberland (Harrisburg), PA 17070

717.774.2721 for reservations mention Keystone Carnival Glass Club.

Make reservations by April 7<sup>th</sup> to ensure rate.

**Directions: Exit 242 (New Cumberland) off the PA turnpike. Hotel is immediately off the exit.**

Convention events: Wednesday April 30<sup>th</sup>- Pizza night and Bingo

Thursday May 1<sup>st</sup> – Stacy and Des Wills Seminar and room viewing

Friday May 2<sup>nd</sup> – Auction preview, Banquet, and guest Speakers Dorothy and Emmett Morgan, Texas

Saturday May 3<sup>rd</sup> Morning- Baerwald collection, Oakland CA., to be auctioned

Here we go to PA again.... This year promises to yet another banner year for the Keystone club! If you haven't been paying attention, this club has been on the upswing in recent years, offering a VERY well planned convention along with some great eastern hospitality and some of the biggest names in CG coming over to conduct seminars. This year is no exception and this is why Mr. Baerwald of Oakland, CA. has asked that his collection be sold at this convention. Peter's glass is absolutely wonderful!! We could have written a book for just about every piece on color and condition but obviously we cannot do that. Take a good look and I'm sure you will be making plans to attend. There IS something for everyone in this auction as most bases are covered. We hope you can make it to this fantastic convention and see what all the excitement is all about for this club... **Oh yes.... ALL first time attendee's will get a FREE 1 year membership so you can continue to enjoy newsletters and new friends you will make at this club. You cannot beat that!!**

If you cannot make it, but see some glass in the brochure you would like a chance at... Give Laurie a call and she will help you out! You can also visit our website at [www.jimwrodauction.com](http://www.jimwrodauction.com). THANKS!!! Jim

\*\*\*\*\***Mail, E-mail, Phone, and Absentee Bids Policy:**\*\*\*\*\*

1. Phone inquiries on items of interest are welcome! 937.447.4905
2. Bidders take full responsibility to honor any and all bids that are executed in your behalf.
3. All items to be paid for within 7 days of notification unless other arrangements are made prior to auction. Successful absentee bidders must also pay **estimated shipping costs**. NOTE: There will be a \$5.00 fee added, per item, to the price of all successful absentee bids plus postage and insurance.
4. All items bid competitively against the audience. **We do not start with your bid.** Items will be bid on in perfect condition with average to above average iridescence unless otherwise stated or noted on your order of sale list or absentee bid sheet. **We will describe each item as accurately as possible!! (see listing)** Bids will not be carried out if a damage is found during auction. If manufacture problems bother you such as air bubbles, pulled points, soda ash, tool marks, or any other manufacturing flaw, please be specific in your mail bids or email bids. *If there is a manufacture flaw on an item that we feel is truly distracting, we have noted that in the listing already. Auction Company has the right NOT to execute an absentee bid for any reason.*
5. All bids can be called in to: 937.447.4905. Faxed to 937.548.3492, or sent to 5239 St. Rt. 49 South, Greenville, OH 45331. You can also e-mail bids directly from our website.
6. **All mail, faxed, write-in, and email bids due by Wednesday, April 30th 2008 – 3:00 p.m. (due to traveling!)**
7. **Anyone wishing to live phone bid, requests due by Monday, April 28th 2008 – 12:00 p.m.**
8. If someone in the audience is bidding for you they must pay for the item(s) before leaving.

**NOTICE:** Laurie will get your items to you as fast as she can but, PLEASE allow 2 to 3 weeks for your items to arrive.

\*\*\*\***To view more pictures on the web: [www.jimwrodauction.com](http://www.jimwrodauction.com)**\*\*\*\*

**Terms and Conditions of Auction:** Cash, Travelers checks, business or personal checks with proper I.D. Also Visa/MC and Discover with a 3% clerk fee. All items being sold **AS IS WHERE IS** with **NO MINIMUM** and **NO RESERVE!** *Everything sells to highest bidder.*

\*\*\*\***Please use the preview times WISELY! Look over your items of interest.**\*\*\*\*

*Jim Wroda Auction Services*

**Jim Wroda and Mike Baker CAI – Auctioneers**

5239 St. Rt. 49 South, Greenville, OH 45331 • Phone: 937.447.4905

Email: [laurie@jimwrodauction.com](mailto:laurie@jimwrodauction.com) • Laurie's mobile (if needed after weds.) 937-459-9562



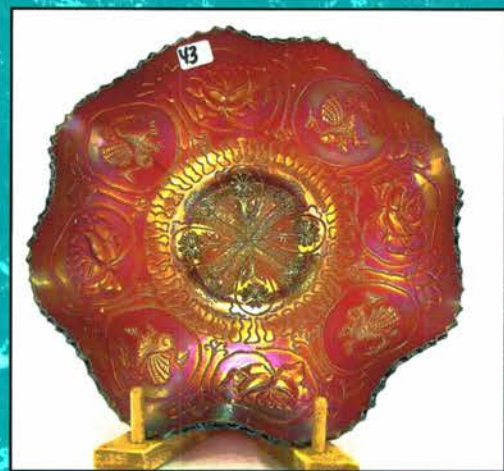
Licensed by the State of Pennsylvania- Jim Wroda license #AU005279 – Mike Baker license #AU005297

Rapid Printing – Greenville, Ohio – 937-548-1010

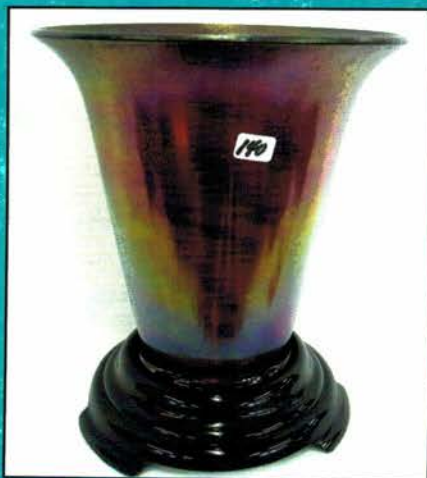
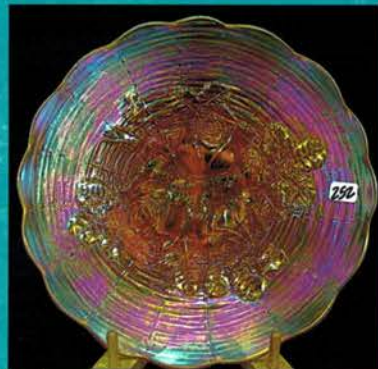
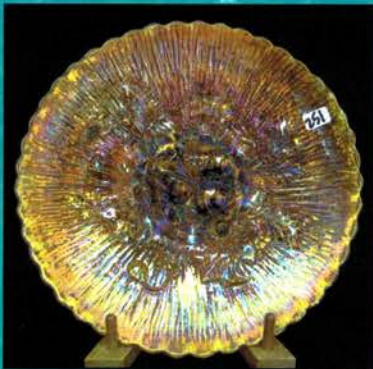
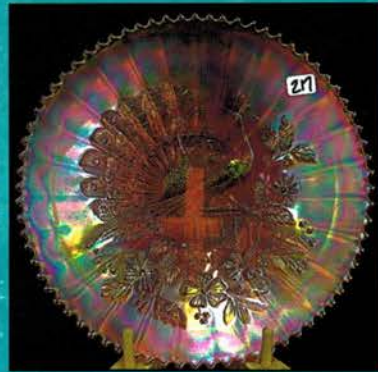
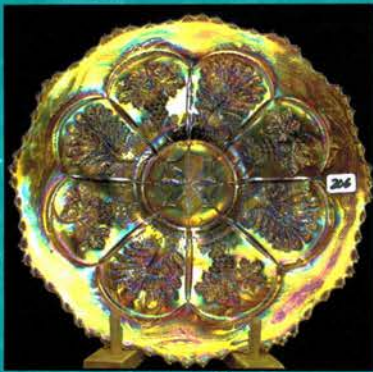
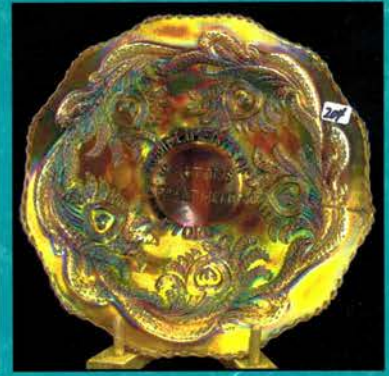
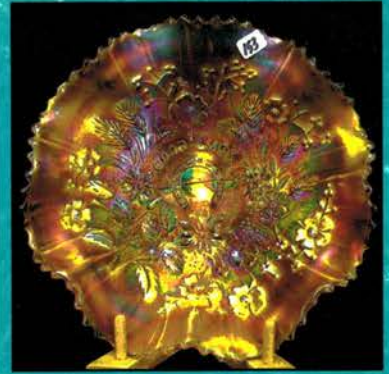
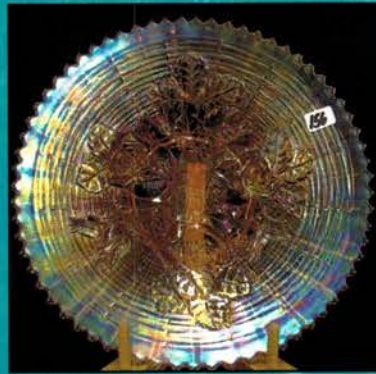
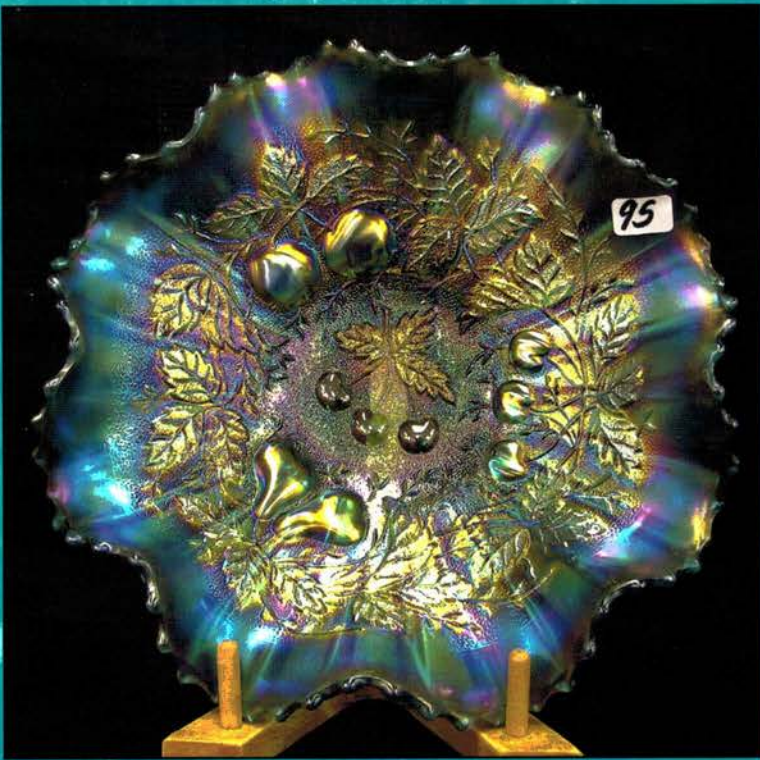


1. Imp 5" elec purple Windmill deep round bowl
2. Imp 5" smoke Windmill deep round bowl
3. Imp 5" smoke Windmill ruffle bowl
4. Imp elec purple Flute TP. Chip on edge
5. Imp mari Flute TP
6. Fenton red slag Orange tree small shaving mug
7. Fenton powder blue Orange tree small shaving mug
8. Fenton sapphire Orange tree small shaving mug
9. FENTON GREEN ORANGETREE LARGE SHAVING MUG - VERY RARE COLOR
10. Fenton elec blue Orange tree large shaving mug - Super nice!
11. N-wood AO Dandelion mug - Scarce!
12. Dugan purple Fishermans mug
13. Dugan pastel mari Fishermans mug - Best we've seen!
14. N-wood elec blue Singing Birds mug
15. N-wood elec lavender Singing Birds mug
16. N-wood pastel mari stippled Singing Birds mug - Super blue irid!
17. N-wood blue stippled Singing Birds mug - Very rare! Small knick on base
18. Fenton dark mari Orange tree loving cup
19. N-wood AO Daisy & Drape footed vase - Super blue irid! Sharp!
20. N-wood dark mari Town Pump - Very rare! This one has beautiful color!
21. N-WOOD 10" ELEC SAPPHIRE PEACOCK AT URN MIC BOWL. EXTREMELY RARE WITH EXCEPTIONAL IRID - TOP PIECE FOR THIS AUCTION
22. N-wood 10" IB Peacock At Urn MIC bowl - Super pastel irid!
23. N-wood 10" IG Peacock At Urn MIC bowl - Super pastel irid!
24. N-wood 10" white Peacock At Urn MIC bowl - Super pastel irid!
25. N-wood 10" dark mari Peacock At Urn ruffled bowl - Rare!
26. N-wood 10" elec purple Grape & Cable MIC bowl - Outstanding example!
27. N-wood 10" elec blue Grape & Cable ruffled bowl - Super elec irid!
28. N-wood 9" white Fruits & Flowers ruffled bowl - Rare!
29. N-wood 9" pumpkin mari Fruits & Flowers ruffled bowl
30. N-wood 9" elec green Wishbone ruffled bowl w/ BW back - Very scarce!
31. IMP BLASTING ELEC PURPLE LOGANBERRY VASE - A SUPER PIECE OF GLASS
32. Imp pastel mari Loganberry vase - One of the prettiest mari ones we've seen!
33. IMP 12 1/2" ELEC PURPLE MORNING GLORY VASE - EXCEPTIONAL IRID
34. Imp 5 1/2" elec purple Morning Glory vase
35. Imp 5" smoke Morning Glory vase
36. RARE IMP 4" ELEC PURPLE MORNING GLORY VASE - A REAL CUTIE
37. Fenton 9 3/4" elec blue Orange tree flat plate - Tremendous elec blue irid!
38. Fenton 9" blue Peacock At Urn plate with elec highlights - A beautiful plate!
39. Fenton 9" elec mari Peacock At Urn plate - Super!
40. Fenton 9" blue Captive Rose plate
41. FENTON 9" BRICK RED VINTAGE 8-RUFFLE BOWL - REALLY SHARP
42. FENTON 8" DARK RED DRAGON & LOTUS ICS BOWL - SUPER PRESSING & IRID
43. FENTON 9" BRICK RED DRAGON & LOTUS 8-RUFFLE BOWL - ONE OF THE PRETTIEST PIECES OF RED WE'VE SOLD
44. FENTON 8 1/2" BRILLIANT RED DRAGON & LOTUS 8-RUFFLE BOWL - ANOTHER TOP PIECE OF RED
45. FENTON 9" AO DRAGON & LOTUS 8-RUFFLE BOWL - VERY RARE COLOR FOR THIS
46. Fenton 8" blue Concord CRE bowl. Base has been ground
47. Fenton 8 1/2" frosty white Peacock At Urn 6-Ruffle bowl - Super!
48. Fenton 8 1/2" elec blue Peacock & Grape 8-Ruffle bowl
49. Fenton 9" elec blue Holly ICS bowl
50. Fenton 9" dark mari Holly plate - A real beauty!
51. Fenton 9" IG 3-Row OE ruffle bowl - Super rare!
52. Fenton 8 1/2" IB 3-Row ICS bowl - Scarce!
53. Imp 10" white Homestead chop plate
54. IMP 10" EMERALD GREEN CHRYSANTHEMUM CHOP PLATE - HAS A REALLY COOL RADIUM TYPE FINISH ON AN EXTREMELY RARE PLATE - ONLY A FEW KNOWN
55. Rindskopf? 11" Art Glass Bridesbowl w/ impressed dinosaurs - Never seen anything like it!
56. DUGAN 11" BLASTING ELEC PURPLE FARMYARD 3-1 EDGE BOWL - VERY RARE BUT MORE IMPORTANT UNBELIEVEABLE ELEC IRID - BUY THIS ONE
57. IMP 9" RADIUM ELEC PURPLE HEAVY GRAPE FLAT PLATE - UNBELIEVABLE IRID - A 10+
58. IMP 6" COBALT BLUE GRAPE PLATE W/ ELEC IRID - EXTREMELY RARE - ONLY 4 OR 5 KNOWN
59. Imp 8" elec purple Grape ruffled bowl - Super!
60. Dugan 9" elec purple Lined Lattice vase - Super!
61. Imp Grape elec purple 7-pc wine set - Outstanding color!
62. Imp 11" elec purple Beaded Bullseye vase - Tremendous elec irid!
63. Imp Grape elec purple Water Carafe with brilliant yellow irid
64. Rare Imp elec purple Heavy Grape goblet - Outstanding irid - First one we've sold that looks like this!
65. Imp 9" elec purple Scroll Embossed flat plate
66. IMP ELEC PURPLE LUSTRE ROSE FERNERY - THIS IS BY FAR THE BEST ONE OF THESE I HAVE EVER SEEN - BLASTING ELEC IRID ALL THE WAY AROUND AND INSIDE
67. N-WOOD 9" IB HEARTS & FLOWERS PLATE W/ PLAIN BACK - ONLY ONE WE KNOW OF AND HAS WONDERFUL PASTEL IRID - A TOP PLATE IN ANY COLLECTION
68. N-wood 9" IB Nippon PCE bowl - A great example! This is one sweet bowl!
69. N-WOOD 9" IB GOOD LUCK RUFFLE BOWL - EXTREMELY RARE WITH BRIGHT YELLOW IRID - REALLY COOL
70. N-WOOD 9" IB/LIGHT AQUA POINSETTIA & LATTICE FOOTED BOWL - VERY RARE - HAS A REALLY ODD BUT NEAT BASE GLASS
71. N-wood 8" IB Wishbone footed bowl - Super pastel irid - This is hot!
72. N-wood 8 1/2" G&C Stippled PCE bowl - Rare!
73. N-wood 9" IB Hearts & Flowers ruffle bowl - Real brilliant pastel irid!
74. N-wood 8 1/2" IB Embroidered Mums ruffle bowl. A bit light on irid but very scarce!
75. Super N-wood IB Poppy Show ruffle bowl - Beautiful yellow pink & blue irid - One of the best!
76. N-wood 9" IB Poppy Show plate - Very scarce and very nice!
- 76a. Outstanding N-wood 9" IB Rose Show plate. This has to be the absolute best Rose Show in IB you'll ever see.
- 76b. EXCEEDINGLY RARE N-wood 9" PASTEL ICE GREEN OPAL ROSE SHOW PLATE. IRID. IS WAY OFF THE CHARTS ON THIS FABULOUS PLATE! BUCKLE UP AND HOLD ON!!!
77. N-wood 10" IB Thin Rib vase - Nice!
78. N-wood IB G&C dresser tray - Very scarce!
79. N-wood IB Fruits & Flowers compote - Really nice!
80. N-WOOD IB G&C CENTERPIECE BOWL, POINTS TURNED IN - SUPER FROSTY W/ SUPER BRILLIANT IRID
81. VERY RARE N-WOOD 9" ELEC BLUE PEACOCKS STIPPLED PCE BOWL - SUPER RARE WITH NICE IRID
82. N-wood 9" elec purple Peacocks ruffle bowl - Killer!
83. N-wood 9" blue Peacocks ruffle bowl w/ elec irid - Very nice!
84. N-WOOD 9" BLUE PEACOCKS STIPPLED PLATE W/ THIN COLOR BASE - HAS BEAUTIFUL GOLD AND BLUE IRID! PEACOCKS ARE SOLID BLUE - SUPER!
85. N-wood 9" IG Peacocks plate - Very nice!
86. N-wood 9" pumpkin mari Peacocks plate
87. N-WOOD 9" ELEC GREEN PEACOCKS PLATE - SUPER MULTI-COLOR IRID
88. VERY RARE N-WOOD 9" CLAMBROTH PEACOCKS STIPPLED PLATE - ONLY ONE WE KNOW OF - REALLY SUPER IRID

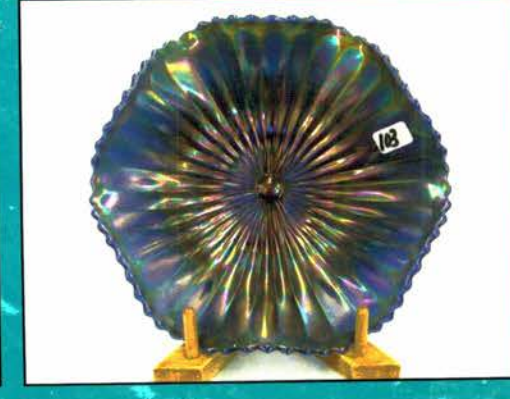
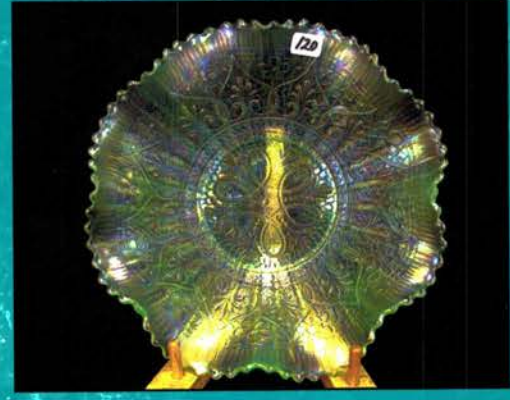
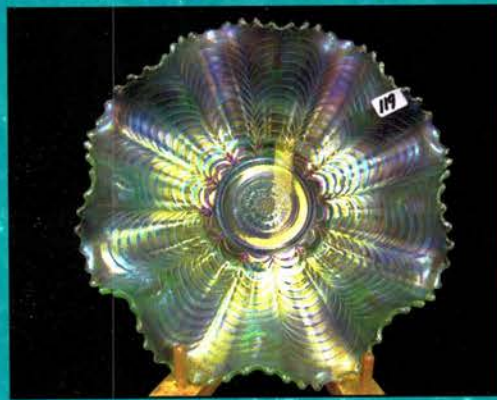
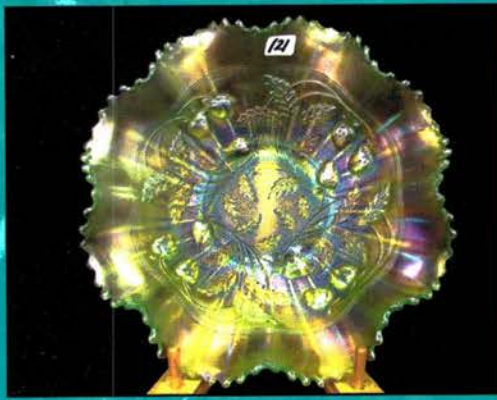




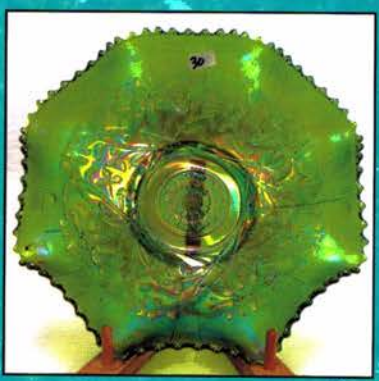
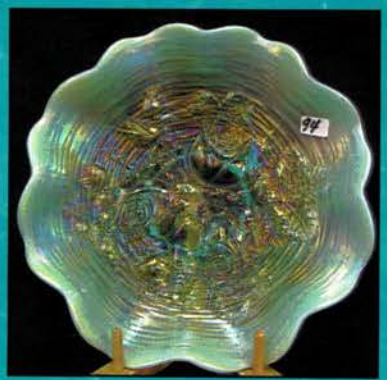
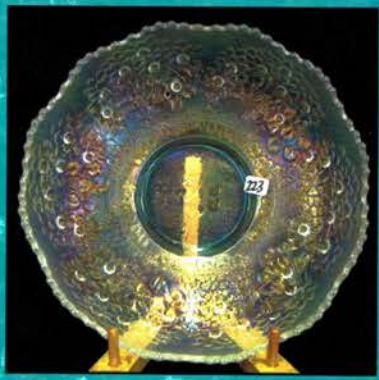
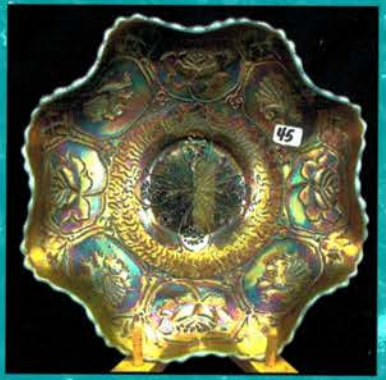
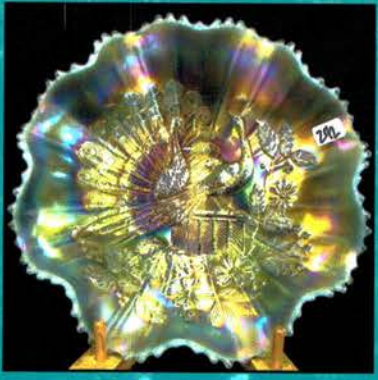














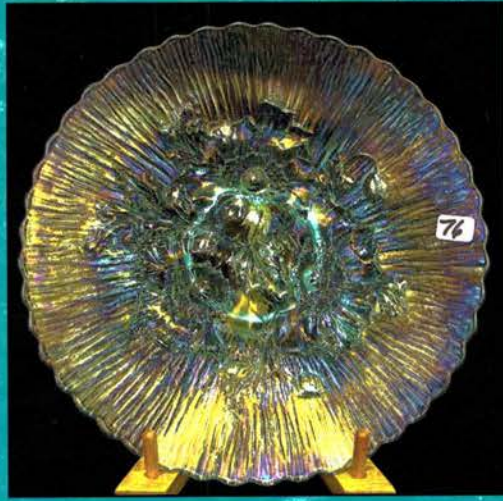
- 89. N-WOOD 9" FROSTY WHITE PEACOCKS PLATE W/ PLAIN BACK - SUPER
- 90. N-WOOD 9" FROSTY WHITE PEACOCKS PLATE W/ BW BACK - EXTREMELY RARE W/ BRILLIANT IRID
- 91. N-WOOD 9" AO PEACOCKS RUFFLE BOWL W/ SUPER BLUE IRID - VERY VERY NICE
- 92. N-WOOD 9" BUTTERSCOTCH AO 3 FRUITS STIPPLED PLATE - THIS IS A TRUE BUTTERSCOTCH
- 93. N-wood 8 1/2" AO 3 Fruits stippled spat. ftd. Bowl - Very nice example!
- 94. BEAUTIFUL N-WOOD 9" PASTEL AO ROSE SHOW RUFFLE BOWL - EXCEPTIONAL EXAMPLE
- 95. THE BEST N-WOOD 9" SAPPHIRE 3 FRUITS STIPPLE RUFFLE BOWL - ABSOLUTELY GORGEOUS - THIS IS A JUST-BUY-IT - MIGHT BE THE BEST PIECE OF SAPPHIRE YOU'LL EVER SEE
- 96. N-wood AO Hearts & Flowers compote - Really beautiful example! Has tiny flake on the base
- 97. N-wood IB Hearts & Flowers compote - Nice!
- 98. N-wood elec purple Hearts & Flowers compote - Super!
- 99. N-wood elec blue Hearts & Flowers compote - Stunning blue and yellow irid!
- 100. N-WOOD COBALT BLUE SINGING BIRDS MASTER BERRY BOWL - HAS BEAUTIFUL ELECTRIC HIGHLIGHTS AND GREAT DETAIL - ONLY ONE KNOWN
- 101. N-WOOD COBALT BLUE SINGING BIRDS 5" BERRY BOWL W/ BEAUTIFUL ELEC IRID - ANOTHER VERY RARE PIECE OF GLASS
- 102. N-wood 9" elec blue Embroidered Mums ruffled bowl - Super!
- 103. N-WOOD 7" BLUE SMOOTH RAYS RUFFLE BOWL W/ BW BACK - ONLY ONE KNOWN - HAS REAL NICE IRID
- 104. EXTREMELY RARE N-WOOD BLUE DAISY & PLUME FOOTED CANDY DISH - ONLY 2 OR 3 KNOWN - HAS VERY BEAUTIFUL MULTI-COLOR IRID
- 105. N-wood 9" elec green G&C stipple plate "Old Rose Distilling Co." - Very unusual to find this color on this advertising plate!
- 106. N-wood 9" elec green G&C PCE bowl w/ BW back - Very rare bowl w/ exceptional blue irid!
- 107. N-wood green G&C stippled banana boat - Very scarce - Nice multi-color irid!
- 108. N-WOOD 12" LIME GREEN TREE TRUNK MID-SIZE VASE - HAS BRILLIANT RADIUM IRID - A KNOCK-OUT
- 109. N-WOOD 13" IG TREE TRUNK MID-SIZE VASE - ANOTHER TOUGH VASE W/ VERY NICE IRID
- 110. N-wood 12" frosty white Tree Trunk mid-size vase - Super multi-color irid!
- 111. UNBELIEVEABLE N-WOOD IB TREE TRUNK MID-SIZE VASE - AN EXCEPTIONAL EXAMPLE - DON'T MISS OUT ON THIS ONE
- 112. N-WOOD 13" ELEC BLUE TREE TRUNK MID-SIZE VASE - ONE OF THE BEST WE'VE EVER SEEN
- 113. N-wood 12" purple Tree Trunk mid-size vase - Very nice!
- 114. Beautiful N-wood 13" pastel mari Tree Trunk mid-size vase - This might be the best run of mid-size vases ever sold!
- 115. N-WOOD IG G&C CENTERPIECE BOWL W/ POINTS UP - VERY RARE BOWL W/ BEAUTIFUL PASTEL IRID!
- 116. N-wood radium IG Peacock At Fountain master berry bowl
- 117. N-wood 9" IG G&C spat. ftd. Plate - Exceptional irid!
- 118. Beautiful N-wood IG Peacock At Fountain compote
- 119. N-wood 9" IG Nippon ruffle bowl - Very rare w/ very nice pastel irid!
- 120. N-wood 9" IG Heart & Flower ruffle bowl - Exceptional example!
- 121. N-wood 9" IG/Lime Strawberry Stippled ruffle bowl - Scarce!
- 122. Fenton Vaseline Peacock At Urn compote
- 123. Fenton powder blue Peacock At Urn compote
- 124. FENTON OLIVE GREEN PEACOCK AT URN COMPOTE - EXTREMELY RARE - ONLY ONE KNOWN!
- 125. Fenton pumpkin mari Peacock At Urn flared compote - Extremely nice!
- 126. Fenton sapphire Stag & Holly deep footed bowl. Has open bubble on collar base but is the only one we know of!
- 127. Fenton blue w/ elec highlights Stag & Holly deep footed bowl
- 128. Fenton aqua Panther footed sauce - Very rare color!
- 129. 2 Fenton mari Panther sauce dishes [2xmoney]
- 130. Florentine 10 1/2" blue candlesticks
- 131. Florentine 8 1/2" blue candlesticks
- 132. Florentine 8 1/2" celeste blue candlesticks
- 133. Dugan 8" celeste blue Double-Stem Rose bowl - Nice stretch irid!
- 134. Fenton 5" IB OE basket
- 135. N-WOOD 13" ELEC PURPLE TREE TRUNK ELEPHANT FOOT VASE - VERY RARE & HAS WONDERFUL MULTI-COLOR ELEC IRID
- 136. FENTON 20" ELEC BLUE RUSTIC FUNERAL VASE - THIS IS A KEEPER
- 137. Fenton 10" red Fine Rib vase - Very nice!
- 138. Fenton 10" red Fine Rib vase - Very nice!
- 139. Red stretch 10" vase - Solid red top to bottom!
- 140. Fenton 8" red stretch large vase on black base - Very scarce!
- 141. Imp 4" red stretch smooth panels flared vase - Killer stretch irid!
- 142. IMP RED FLORAL & OPTIC FOOTED BOWL
- 143. Red Imp Jewels 4" rose bowl - Rare!
- 144. Red Imp Jewels turned-in centerpiece bowl
- 145. Fenton red Peacock lamp w/ bright brilliant blue irid
- 146. Imp mari Poppy Show vase - Nice!
- 147. Imp mari Grape 8-pc wine set - Very dark!
- 148. Imp mari Rococco vase
- 149. Imp pumpkin mari Windmill pickle dish
- 150. N-wood mari 8-pc G&C whiskey set - Rare to find a complete set!
- 151. N-wood pumpkin mari Poppy pickle dish
- 152. Fenton dark mari 10" Panther Master Bowl bowl - Very nice pressing and detail!
- 153. N-wood 9" pumpkin mari Good Luck stippled ruffle bowl - A super example!
- 154. N-wood 9" pumpkin mari Poppy Show bowl - Super
- 155. N-wood mari G&C stippled Humidor - Very hard to find - Has great color!
- 156. N-WOOD 8" PASTEL MARI ROSE SHOW VARIANT PLATE - NOT OFTEN AVAILABLE
- 157. N-wood 9" mari G&C plate w/ plain back
- 158. M-burg 10" mari Seaweed 3-1 edge bowl
- 159. M-burg 5" dark mari Holly Sprig ICS bowl
- 160. Fenton blue Orange tree powder jar w/ bright elec irid
- 161. Fenton mari Orange tree powder jar w/ bright elec ird
- 162. N-wood purple G&C/Vintage powder jar
- 163. VERY RARE N-WOOD WHITE G&C/VINTAGE POWDER JAR - ONE OF JUST A COUPLE KNOWN!
- 164. N-wood 7" elec purple Fruits & Flowers plate
- 165. N-wood 8 1/2" elec purple G&C bowl - Has blasting elec irid!
- 166. N-wood 9" purple Poinsettia & Lattice footed bowl w/ elec highlights
- 167. Imp 9" purple Scroll Embossed plate - Nice yellow irid!
- 168. N-wood purple G&C crackerjar
- 169. N-wood elec purple G&C large compote - Super color - Very scarce!
- 170. N-wood 9" elec purple G&C plate - Super irid!
- 171. N-wood purple G&C Sweetmeat
- 172. N-wood purple G&C Whimsy compote - Very nice!
- 173. N-wood 9" elec purple Wishbone footed bowl
- 174. Dugan 9" purple Fanciful plate
- 175. Fenton blue Floral & Grape water pitcher - Very nice!
- 176. N-WOOD SMOKE LEAF & BEADS NUTBOWL W/ SUNFLOWER INT - ONLY ONE KNOWN IN TRUE SMOKE
- 177. Purple Dozen Roses footed bowl - Very scarce!
- 178. FENTON 6" AMY PEACOCK TAIL FLAT PLATE - VERY RARE
- 179. N-wood 6" Horehound G&C handgrip plate
- 180. Fenton 6" purple Paradise Sodas plate
- 181. M-burg 6" purple Isaac Benesch & Sons ruffle bowl - Scarce!
- 182. Fenton 5" red OE JIP hat
- 183. Fenton 5" red OE hat
- 184. Fenton 5" red Holly hat
- 185. Fenton red Flowering Dill 5" hat - Scarce!
- 186. Fenton Vaseline Flowering Dill 5" hat
- 187. Fenton 7" Vaseline G&C bowl - Very scarce!



- \_\_\_\_\_ 187A. Fenton 9" pastel marigold Peter Rabbit plate. Extremely rare.  
Has beautiful multi-color irid throughout. Only a few know!
- \_\_\_\_\_ 188. Green Daisy Squares compote w/ CRE
- \_\_\_\_\_ 189. Fenton powder blue Orange tree compote
- \_\_\_\_\_ 190. N-wood white Drapery rosebowl - Very scarce!
- \_\_\_\_\_ 191. 2 Fenton white Blackberry mini compotes. Both have a  
small chip on the base [2xmoney]
- \_\_\_\_\_ 192. N-wood dark mari Acorn Burr 4-pc table set - Very hard to find!
- \_\_\_\_\_ 193. Dugan 7" white Pool of Pearls plate-Bright blue irid!
- \_\_\_\_\_ 194. Fenton 6" frosty white Cherry Chain plate w/ bright blue  
irid - Very rare!
- \_\_\_\_\_ 195. U.S. Glass 5" white Palm Beach sauce
- \_\_\_\_\_ 196. N-wood 6" white Peacock At Urn ICS bowl
- \_\_\_\_\_ 197. N-wood 6" IB Peacock At Urn ICS bowl
- \_\_\_\_\_ 198. N-wood 6" IG Peacock At Urn ICS bowl
- \_\_\_\_\_ 199. Celeste blue Swan Salt
- \_\_\_\_\_ 200. Imp 8" dark mari Ripple vase
- \_\_\_\_\_ 201. Imp 7" dark mari Morning Glory vase
- \_\_\_\_\_ 202. Choice of 5 tumblers - Blue Floral & Grape ; Mari Field  
Flower ; Mari G&C Stippled ; Green Grape & Gothic  
Arches; Green Imp Grape
- \_\_\_\_\_ 203. Dark mari Soda Gold Spitoon
- \_\_\_\_\_ 204. Fenton 9" dark mari Heart & Vine Spectors Dept Store plate  
- Super dark color!
- \_\_\_\_\_ 205. Fenton 9" mari Peacock At Urn plate w/ hot pink irid - This  
is one tremendous plate!
- \_\_\_\_\_ 206. Fenton 9" mari Peacock & Grape plate w/ super multi-color irid
- \_\_\_\_\_ 207. Fenton 9" mari Holly plate - Nice!
- \_\_\_\_\_ 208. Fenton 7" mari Horse Head plate - Scarce!
- \_\_\_\_\_ 209. Fenton 9" purple Captive Rose plate w/ multi-color irid
- \_\_\_\_\_ 210. Fenton 9" green Captive Rose plate - Nice!
- \_\_\_\_\_ 211. Fenton 9" blue Captive Rose plate
- \_\_\_\_\_ 212. Fenton 9" mari Captive Rose plate
- \_\_\_\_\_ 213. Fenton 9" mari Captive Rose plate
- \_\_\_\_\_ 214. Fenton 12" green April Showers vase
- \_\_\_\_\_ 215. N-wood 12" purple Fine Rib vase
- \_\_\_\_\_ 216. Imp smoke Rococco vase
- \_\_\_\_\_ 217. N-WOOD 9" MARI PEACOCKS PLATE W/ BRIGHT  
BRILLIANT PINK IRID - A REAL HOT PLATE
- \_\_\_\_\_ 218. N-wood 9" IG Peacocks plate - Nice example!
- \_\_\_\_\_ 219. N-wood 9" dark mari Peacocks PCE bowl
- \_\_\_\_\_ 220. N-wood 9" green Good Luck plate w/ BW back - Scarce!
- \_\_\_\_\_ 221. N-wood 9" purple Good Luck plate w/ BW back
- \_\_\_\_\_ 222. N-wood 9" green Good Luck PCE bowl w/ BW back - Scarce!
- \_\_\_\_\_ 223. Rare Fenton 9" white Cherry Chain ICS bowl - Super frosty irid!
- \_\_\_\_\_ 224. Fenton 9" mari Dragon & Lotus ICS bowl
- \_\_\_\_\_ 225. Fenton 8 1/2" green Peacock 3-1 Edge bowl
- \_\_\_\_\_ 226. Fenton 8" mari Peacock & Grape ICS bowl
- \_\_\_\_\_ 227. Fenton blue Grape & Cable fruitbowl w/ PM interior - Scarce!
- \_\_\_\_\_ 228. N-wood 10" elec purple Peacock At Urn MIC - Super color  
not usually found on this bowl!
- \_\_\_\_\_ 229. Dugan 10" white Lined Lattice vase
- \_\_\_\_\_ 230. Dugan 10" purple Lined Lattice vase
- \_\_\_\_\_ 231. Dugan 9" lavender Lined Lattice vase
- \_\_\_\_\_ 232. Dugan 9" purple Lined Lattice vase
- \_\_\_\_\_ 233. Dugan 10" pumpkin mari Lined Lattice vase
- \_\_\_\_\_ 234. Dugan 12" elec purple Lined Lattice vase w/ peg feet -  
Scarce - All of these vases are really nice!
- \_\_\_\_\_ 235. N-wood mari Beaded Cable rosebowl
- \_\_\_\_\_ 236. M-burg dark mari Hobnail Swirl rosebowl - Super!
- \_\_\_\_\_ 237. N-wood IG Dandelion Knights Templar mug - Very scarce!
- \_\_\_\_\_ 238. Fenton 10" blue April Showers vase
- \_\_\_\_\_ 239. N-wood 8" AO Four Pillars vase
- \_\_\_\_\_ 240. Imp 8" mari Parlor Panels vase
- \_\_\_\_\_ 241. Imp 9" elec purple Ripple vase - Super color top to bottom!
- \_\_\_\_\_ 242. N-wood 8 1/2" AO Peacocks ruffle bowl - Really nice pastel irid!
- \_\_\_\_\_ 243. N-wood 8 1/2" mari Good Luck ruffle bowl w/ nice multi-  
color irid
- \_\_\_\_\_ 244. N-wood 8 1/2" elec blue Good Luck ruffle bowl - One of the best!
- \_\_\_\_\_ 245. N-wood 8" IB Heart & Flower ruffle bowl w/ frosty pastel irid
- \_\_\_\_\_ 246. N-wood 8" amy 3 Fruits spat ftd bowl
- \_\_\_\_\_ 247. N-wood 8" purple 3 Fruits spat ftd bowl w/ elec highlights
- \_\_\_\_\_ 248. N-wood 8" purple 3 Fruits bowl
- \_\_\_\_\_ 249. N-wood 9" dark mari 3 Fruits stippled plate - Nice!
- \_\_\_\_\_ 250. N-wood 9" elec blue 3 Fruits stippled plate - Super color!
- \_\_\_\_\_ 251. N-wood 9" mari Poppy Show plate - Beautiful brilliant irid!
- \_\_\_\_\_ 252. N-wood 9" dark mari Rose Show plate w/ hot pink irid - Wow!
- \_\_\_\_\_ 253. N-wood 9" elec purple Rose Show plate - Super nice for this!
- \_\_\_\_\_ 254. N-wood 9" elec blue Rose Show plate - Nice multi-color irid  
on a desirable plate!
- \_\_\_\_\_ 255. N-wood dark mari G&C banana boat - Super color!
- \_\_\_\_\_ 256. N-wood elec blue G&C banana boat-Super example!
- \_\_\_\_\_ 257. N-wood 9" green G&C plate
- \_\_\_\_\_ 258. N-wood 9" purple G&C plate
- \_\_\_\_\_ 259. N-wood 9" purple 3 Fruits plate w/ BW back
- \_\_\_\_\_ 260. N-wood 9" purple Wishbone footed plate
- \_\_\_\_\_ 261. Rare Dugan 9" blue Fanciful plate
- \_\_\_\_\_ 262. Imp mari Luster Rose fernery
- \_\_\_\_\_ 263. Fenton frosty white Peacock At Urn compote
- \_\_\_\_\_ 264. Dugan white Grape Delight rose bowl
- \_\_\_\_\_ 265. Fenton mari Holly compote
- \_\_\_\_\_ 266. Fenton mari Orange tree mug
- \_\_\_\_\_ 267. Fenton mari Orange tree large shaving mug
- \_\_\_\_\_ 268. Vaseline Florentine candlestick
- \_\_\_\_\_ 269. N-wood mari Singing Birds mug
- \_\_\_\_\_ 270. Dugan mari Stork w/ Lattice Band mug
- \_\_\_\_\_ 271. Dugan 6" PO Petal & Fan CRE bowl
- \_\_\_\_\_ 272. Mari Windmill & Diamond Lace 5" berry bowls
- \_\_\_\_\_ 273. N-WOOD 14" VASELINE THIN RIB MID-SIZE VASE -  
EXTREMELY HARD TO FIND - FIRST ONE WE HAVE  
SOLD IN YEARS
- \_\_\_\_\_ 274. N-wood 13" white Thin Rib mid-size vase
- \_\_\_\_\_ 275. N-wood 12" mari Thin Rib vase
- \_\_\_\_\_ 276. N-wood 12" purple Thin Rib vase
- \_\_\_\_\_ 277. N-WOOD 8 1/2" SAPPHIRE GOOD LUCK  
RUFFLE BOWL-VERY RARE WITH SUPER IRID
- \_\_\_\_\_ 278. FENTON 9" MARI MOONSTONE DRAGON & LOTUS  
8-RUFFLE BOWL - RARE
- \_\_\_\_\_ 279. Fenton 9" PO Dragon & Lotus 8-Ruffle bowl w/ super irid
- \_\_\_\_\_ 280. Fenton 9" amber Dragon & Lotus 8-ruffle bowl
- \_\_\_\_\_ 281. Fenton 7" aqua Acorn bowl - Scarce!
- \_\_\_\_\_ 282. Fenton 7" aqua Leaf Chain bowl - Rare!
- \_\_\_\_\_ 283. Fenton aqua Peacock & Dahlia bowl
- \_\_\_\_\_ 284. Fenton aqua Peacock At Urn compote
- \_\_\_\_\_ 285. Fenton blue Peacock At Urn compote - Silvery!
- \_\_\_\_\_ 286. Fenton 7" Blackberry Spray OE 2-Sided hat
- \_\_\_\_\_ 287. FENTON 10" VASELINE OPAL FINE RIB VASE - VERY RARE
- \_\_\_\_\_ 288. FENTON 9 1/2" PEACH OPAL FINE RIB VASE
- \_\_\_\_\_ 289. Fenton 10" sapphire Fine Rib vase - Rare!
- \_\_\_\_\_ 290. Fenton 9 1/2" green Fine Rib vase
- \_\_\_\_\_ 291. Fenton 9 1/2" purple Fine Rib vase
- \_\_\_\_\_ 292. Fenton 10" amy Fine Rib vase
- \_\_\_\_\_ 293. Fenton 12" Vaseline Fine Rib vase
- \_\_\_\_\_ 294. Fenton 10 1/2" Vaseline Fine Rib vase
- \_\_\_\_\_ 295. Fenton 8 1/2" Vaseline Fine Rib vase
- \_\_\_\_\_ 296. 2 Fenton 10 1/2" blue Fine Rib vases [2xmoney]
- \_\_\_\_\_ 297. Fenton 11" mari Fine Rib vase
- \_\_\_\_\_ 298. Fenton 10" mari Fine Rib vase
- \_\_\_\_\_ 299. Fenton 10 1/2" mari Fine Rib vase
- \_\_\_\_\_ 300. Fenton 9 3/4" Vaseline Fib Rib vase. Not Carnival

*Thanks for participating in today's auction!  
Our next Carnival Glass auction will be  
the late Lemar & Mary Sharp collection  
from Lititz, PA on Saturday, May 24th, 2008.*







*Jim Wroble Auction Services*  
5239 St. Rt. 49 South  
Greenville, OH 45331  
[www.auctionzip.com](http://www.auctionzip.com) ID# 11511  
[www.jimwrobleauction.com](http://www.jimwrobleauction.com)



\*\*\*FIRST CLASS DELIVERY\*\*\*

RESORTED  
FIRST CLASS MAIL  
U.S. POSTAGE  
**PAID**  
CELINA, OH  
PERMIT NO. 99



*Keystone Carnival Glass Convention Auction*  
*Harrisburg Holiday Inn Hotel & Conference Center*  
*New Cumberland, PA*  
*Saturday, May 3<sup>rd</sup>, 2008 at 9:45 a.m.*

*Echo Lake*