

*HOACGA Carnival Glass Convention 2008
The Maxwell Collection*



Jim Wroda Auction Services

5239 St. Rt. 49 South, Greenville, OH 45331

Cover photos by Marge Beasley
Volume 3, Series 2008

HOACGA Carnival Glass Convention Auction

(This is a public auction. You do not need to be a member of HOACGA to participate in the auction.)

Saturday, April 26, 2008 at 9:30 a.m.

Preview Friday, April 25th, 2008 from 6:00-9:00 p.m. and Saturday from 8:00 a.m. until auction time

Embassy Suites, Kansas City Airport

7640 N.W. Tiffany Springs Parkway, Kansas City, MO 64153

816-891-7788

Well it's time once again for an outstanding HOACGA auction and this year will not disappoint! Judy Maxwell is well known for her buying habits, which includes some of the finest color and pieces you'll come across. Judy has built one fabulous collection, and now it is time for you to also enjoy it! As always with HOACGA Bob and his crew have done another wonderful job of getting this convention ready so come on over and enjoy the week! Hope to see you there!

All convention activities are on our website. Check it out!

If you cannot make it, but see some glass in the brochure you would like a chance at... Give Laurie a call and she will help you out! You can also visit our website at www.auctionzip.com ID# 11511 or www.jimwrodauction.com. THANKS!!! Jim

*******Mail, E-mail, Phone, and Absentee Bids Policy:*******

1. Phone inquiries on items of interest are welcome! 937-447-4905.
2. Bidders take full responsibility to honor any and all bids that are executed in your behalf.
3. All items to be paid for within 7 days of notification unless other arrangements are made prior to auction. Successful absentee bidders must also **pay estimated shipping costs**.
NOTE: There will be a \$5.00 fee added, per item, to the price of all successful absentee bids plus postage and insurance.
4. All items bid competitively against the audience. **We do not start with your bid.**
5. Items will be bid on in perfect condition with average to above average iridescence unless otherwise stated or noted on your order of sale list or absentee bid sheet. **We will describe each item as accurately as possible!! (see listing) Bids will not be carried out if a damage is found during auction.** If manufacture problems bother you such as air bubbles, pulled points, soda ash, tool marks, or any other manufacturing flaw, please be specific in your mail bids or email bids. *If there is a manufacture flaw on an item that we feel is truly distracting, we have noted that in the listing already. Auction Company has the right NOT to execute an absentee bid for any reason.*
6. All bids can be called in to: (937) 447-4905, faxed to 937-548-3492, or sent to 5239 St. Rt. 49 South, Greenville, OH 45331. You can also e-mail bids directly from our website and ask questions (Please Ask!)
7. **All mail, faxed, write-in, and email bids due by Wednesday, April 23, 2008 - 3:00 p.m. (due to traveling!)**
8. **Anyone wishing to live phone bid, requests due by Monday, April 21, 2008 - 5:00 p.m.**
9. If someone in the audience is bidding for you they must pay for the item(s) before leaving.
NOTICE: Due to back to back conventions, Laurie will get your items to you as fast as she can but, PLEASE allow 2 to 3 weeks for your items to arrive, after payment is received, due to travel time. Thanks!

*****To view more pictures on the web: www.auctionzip.com ID#11511***
www.jimwrodauction.com**

Terms and Conditions of Auction: Cash, Travelers checks, business or personal checks with proper I.D. We now have Visa and MC and Discover with a 3% clerk fee. All items being sold **AS IS WHERE IS**

*****Please use the preview times WISELY! Look over your items of interest.*****



Jim Wroda Auction Services

Jim Wroda and Mike Baker CAI - Auctioneers

5239 St. Rt. 49 South, Greenville, OH 45331

Email: laurie@jimwrodauction.com



Embassy Suites, Kansas City Airport

7640 N.W. Tiffany Springs Parkway, Kansas City, MO 64153

COMING FROM THE SOUTH - U.S. HIGHWAY 71:

EXIT (to the right) to I-435 North (Kansas City/Des Moines) - continue on I-435 North (exit to the right) for approximately 20 Miles, to EXIT 49A (Highway 152 West). Continue West for approximately 9 miles, EXIT to I-29, (Highway 71/ St. Joseph). Go North (about 1 mile) to EXIT 10 (Tiffany Springs Parkway). The Embassy Suites will be on your right.

COMING FROM THE EAST - I-70:

EXIT from I-70 at EXIT 8B (Des Moines) to I-435 North - continue on I-435 North for approximately 10 miles, to EXIT 49A (Highway 152 West). Continue West for approximately 9 miles, exit to I-29, Highway 71, St Joseph. Go North (about 1 mile) to EXIT 10 (Tiffany Springs Parkway). The Embassy Suites will be on your right.

COMING FROM THE NORTH - I-35:

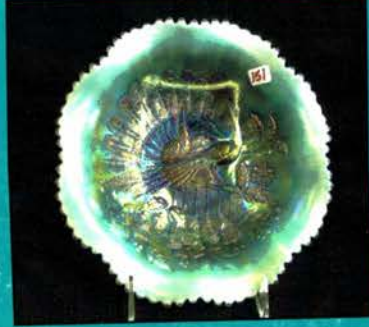
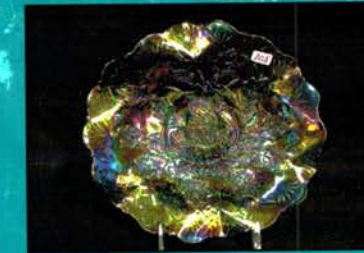
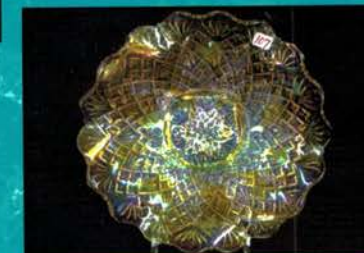
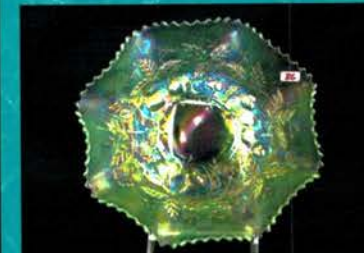
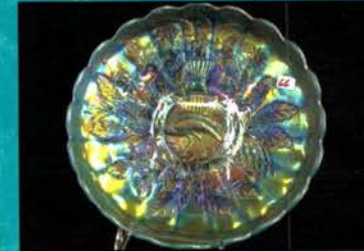
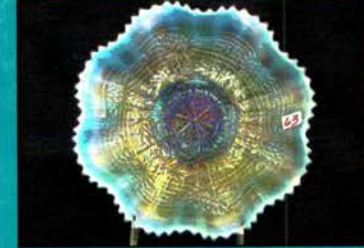
EXIT from I-35 at EXIT 16 (Liberty - Highway 152), turn right (West), continue on Highway 152 for approximately 11 miles, EXIT to I-29, Highway 71, St. Joseph. Go North (about 1 mile) to EXIT 10 (Tiffany Springs Parkway). The Embassy Suites will be on your right.

COMING FROM THE WEST ---- I-70:

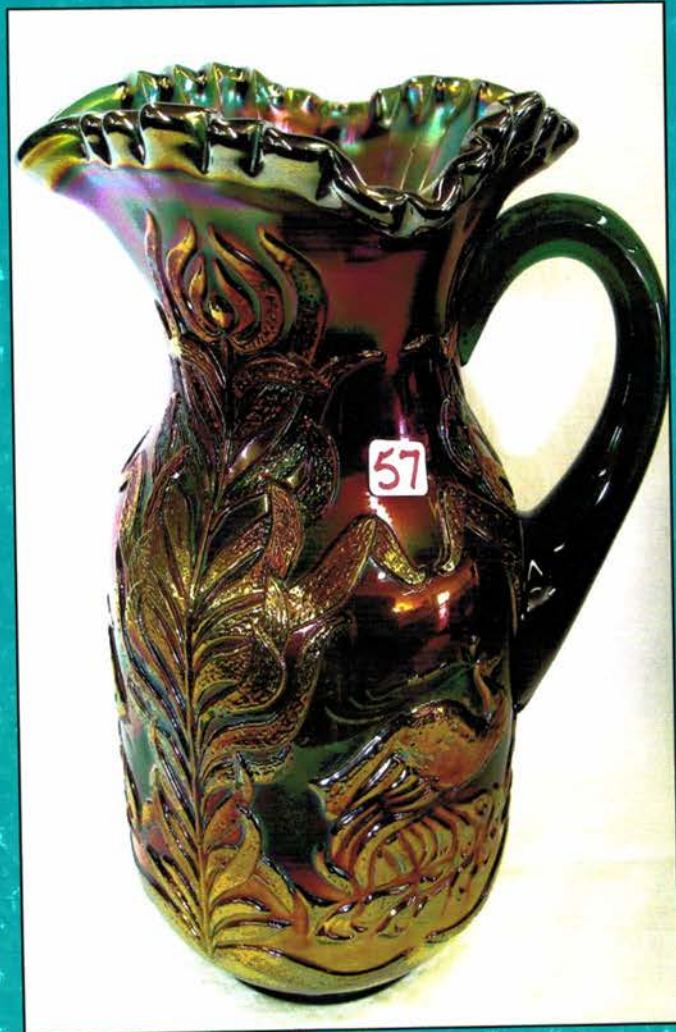
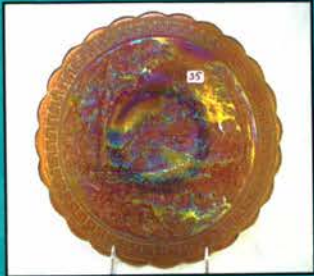
EXIT from I-70 at EXIT 411B to I-435 North, continue north on I-435 to EXIT 24 (Highway 152 & N.W. Barry Road), turn right, go about 4 miles to EXIT I-29 North (St Joseph), go north on I-29 (about 1 mile) to EXIT 10 (Tiffany Springs Parkway). The Embassy Suites will be on your right.

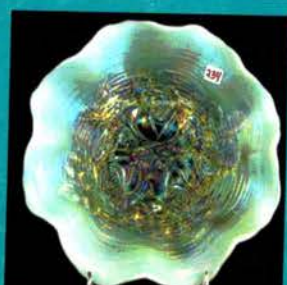
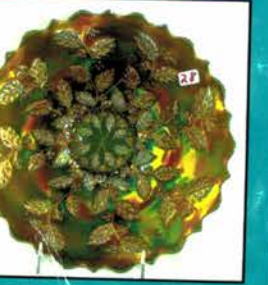
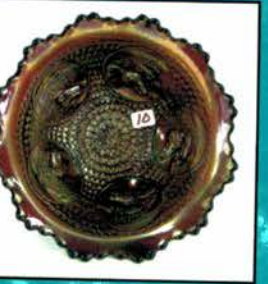
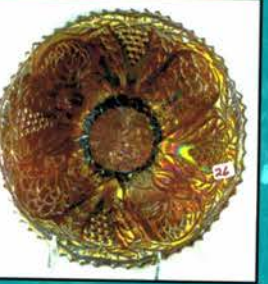
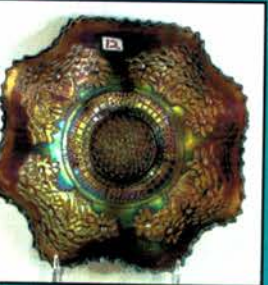
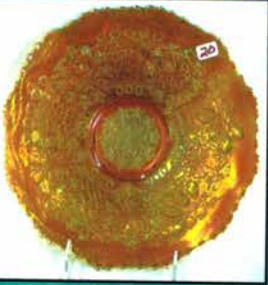
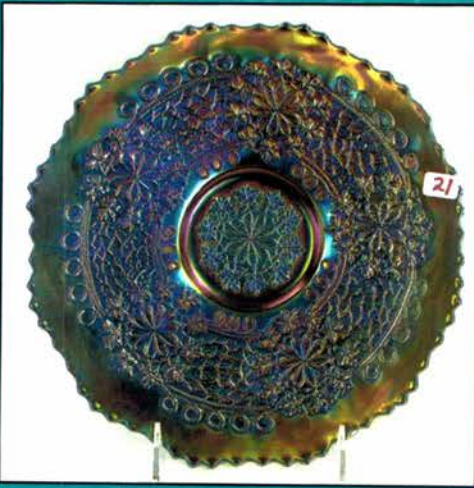
- _____ 1. Celeste blue Stretch Spindle candlesticks.
- _____ 2. Celeste blue Stretch squatty candlesticks
- _____ 3. Ice green Stretch paneled goblet
- _____ 4. Fenton mari. Wine & Roses goblet
- _____ 5. Ice green Stretch 7" pillar vase w/ruffled top
- _____ 6. Red Stretch 8" plate
- _____ 7. Fenton 6" rev. amberina Stippled Rays ruffled bowl
- _____ 8. Fenton 7" red G & C ruffled bowl
- _____ 9. Fenton red Holly goblet shape compote. Scarce.
- _____ 10. FENTON RED SLAG HORSE HEAD MEDALLION NUT BOWL. VERY HARD TO FIND.
- _____ 11. Fenton 6" red Blackberry Spray hat.
- _____ 12. Fenton 8 1/2" red Orange Tree 8-ruffle bowl.
- _____ 13. Fenton 8 1/2" red Dragon & Lotus ICS bowl. Scarce.
- _____ 14. EXTREMELY RARE 9" **YELLOW ORANGE** TREE PLATE W/VERY NICE PASTEL IRID.
- _____ 15. Fenton 9" dark mari. Orange Tree plate. Fantastic color.
- _____ 16. FENTON 9" PURPLE ORANGE TREE PLATE W/TT CENTER. NICE MULTICOLOR IRID.
- _____ 17. FENTON 9" GREEN ORANGE TREE PLATE W/TT CENTER. VERY RARE COLOR! NICE!!!
- _____ 18. Fenton 9" radium white Orange Tree plate w/TT center. Super bright multicolor irid.
- _____ 19. FENTON 9" GREEN LEAF CHAIN PLATE W/MULTICOLOR IRID.
- _____ 20. Fenton 9" pumpkin mari. Leaf Chain plate. Super!!!
- _____ 21. Fenton 9" elec. Blue Leaf Chain plate. Best one we've seen!
- _____ 22. FENTON 9" MARI. THISTLE PLATE. EXTREMELY RARE. JUST A HANDFULL OF THESE OUT THERE!
- _____ 23. Fenton 9" mari. Autumn Acorn plate. Rare.
- _____ 24. Fenton 9" green Autumn Acorn plate. Scarce.
- _____ 25. Fenton 9" blue Lotus & Grape plate. Nice pressing & great color!
- _____ 26. FENTON 9" PURPLE LOTUS & GRAPE PLATE W/KILLER MULTICOLOR IRID. A FANTASTIC LOOKING PLATE!
- _____ 27. Fenton 9" blue Dragon & Lotus plate.
- _____ 28. Fenton 9" green Holly plate w/nice multicolor irid.
- _____ 29. FENTON 9" BLASTING MARI. HOLLY PLATE. ONE OF THE BEST LOOKING PLATES WE'VE SEEN. TAKE A GOOD HARD LOOK AT THIS ONE.
- _____ 30. Fenton 9" purple Holly plate w/bright irid. Another beautiful plate!
- _____ 31. Imperial 11" elec. Purple Heavy Grape chop plate. WOW!
- _____ 32. Imperial honey amber Chrysanthemum chop plate w/nice stretchy irid. Rare color!
- _____ 33. IMPERIAL BLUE HOMESTEAD CHOP PLATE W/BRIGHT BRILLIANT YELLOW IRID. ONE OF THE RAREST CHOP PLATES EVER MADE!!!
- _____ 34. Imperial elec. Purple Homestead chop plate w/bright yellow irid. A shop stopper!!
- _____ 35. Imperial elec. Amber Homestead chop plate. Tremendous electric irid. on a very desired plate!!!
- _____ 36. Imperial Grape teal 5 pc. water set. Rare color w/very nice irid.
- _____ 37. Imperial elec. purple Open Rose water pitcher w/blasting irid.
- _____ 38. (4) Imperial purple Open Rose tumblers. CHOICE
- _____ 39. Imperial elec. purple Octagon midsize water pitcher. Extremely rare and has tremendous electric irid.
- _____ 40. IMPERIAL ELEC. PURPLE CHATALAINE WATER PITCHER. THIS THING IS ON FIRE. MAY BE THE RAREST IMPERIAL PITCHER!!!
- _____ 41. (2) Imperial electric purple Chatalaine tumblers. CHOICE
- _____ 42. Imperial KILLER electric purple Tiger Lily 5-pc. Water set. Extremely rare to find a set..
- _____ 43. Imperial electric purple Diamond Lace water pitcher. Everyone's favorite.
- _____ 44. EXTREMELY RARE IMPERIAL ELEC. PURPLE FASHION WATER PITCHER. ABSOLUTELY GORGEOUS!!!!!!!
- _____ 45. Imperial elec. purple Fashion tumbler. Rare.
- _____ 46. VERY RARE IMPERIAL ELEC. PURPLE 474 WATER PITCHER. HOT!!!!
- _____ 47. (4) Imperial purple 474 tumblers. CHOICE.
- _____ 48. Imperial 16" mari. Ripple vase.
- _____ 49. Imperial 12" elec. purple Ripple vase.
- _____ 50. Imperial 10" elec. purple Beaded Bulls Eye vase. Super
- _____ 51. RARE WESTMORELAND PEACH OPAL FRUIT SALAD 7-PC. PUNCH SET. NOT SURE WE HAVE EVER SOLD ONE OF THESE SETS. BEAUTIFUL!
- _____ 52. Westmoreland purple Fruit Salad punch bowl & base.
- _____ 53. Fenton mari. hand painted Magnolia & Drape 7-pc. Water set.
- _____ 54. Fenton BLUE STRAWBERRY SCROLL WATER PITCHER. VERY RARE. WHAT A GREAT SHAPE!
- _____ 55. Fenton green Floral & Grape water pitcher w/ 1 tumbler
- _____ 56. Fenton blue Ten Mums 5 pc water set. Always a desirable set. Great color and detail.
- _____ 57. KILLER Fenton GREEN FLUFFY PEACOCK WATER PITCHER! WOW!!! YOU HAVEN'T SEEN ONE TILL YOU SEE THIS ONE!
- _____ 58. N-wood 8" mari Poinsettia & Lattice ft'd ruffled bowl. Super!
- _____ 59. Beautiful N-wood 9" ELEC BLUE Hearts & Flowers PCE bowl. This is one heck of a bowl. Chip on ruffle
- _____ 60. N-wood 9" pastel mari Hearts & Flowers plate. SUPER
- _____ 61. N-wood 9" Elec. purple Hearts & Flowers plate. This is way above average!
- _____ 62. N-wood 9" IG Embroidered Mums plate. Great pastel irid. on a very scarce plate
- _____ 63. N-wood 8 1/2" AO EMBROIDERED MUMS RUFFLED BOWL. SUPER PASTEL IRID. GETTING REAL HARD TO FIND A GOOD ONE OF THESE!
- _____ 64. N-wood 10" purple Peacock at Urn chop plate. Scarce
- _____ 65. N-wood 10" GREEN PEACOCK AT FOUNTAIN MIC BOWL. VERY RARE BOWL. NOT MANY GREEN ONES OUT THERE. HERE'S ONE!
- _____ 66. N-wood 10" IB Peacock at Urn MIC bowl. Wow!
- _____ 67. N-wood 10" BLUE Peacock at Urn MIC bowl. Very scarce.
- _____ 68. N-wood 10" pastel mari Peacock at Urn MIC bowl. WOW!

- _____ 69. N-wood 9" purple Strawberry plate w/BW back
- _____ 70. N-wood 9" purple Strawberry plate w/PL back. SUPER
- _____ 71. N-wood 9" PO Strawberry plate. Very RARE color!
- _____ 72. N-wood 8" IG/LIG stippled Strawberry ruffled bowl. Great pastel irid. Very Scarce
- _____ 73. N-wood 8" green Stippled Strawberry PCE bowl.
- _____ 74. N-wood 9" purple Stippled Strawberry plate.
- _____ 75. N-wood 9" mari Stippled Strawberry plate.
- _____ 76. N-wood 9" radium purple G&C plate. Really cool
- _____ 77. N-wood 9" radium mari G&C plate w/ BW back
- _____ 78. N-wood AO Poppy pickle dish. Very scarce. Nice!
- _____ 79. N-wood 9" AO Grape & Cable PCE bowl. Tiny chip on 1 point. Very scarce
- _____ 80. N-wood 5" white Peacock at Urn ICS bowl.
- _____ 81. N-wood 5" AO PEACOCK AT URN ICS BOWL. VERY RARE . ONE HASN'T SOLD IN AWHILE
- _____ 82. N-wood 5" purple Peacock at Urn ICS bowl.
- _____ 82a N-wood Green Grape & Cable hatpin holder. Very nice color on a very desirable hatpin holder.
- _____ 83. N-wood 5" elec. blue Peacock at Urn ICS bowl.
- _____ 84. N-wood 9" Green Wild Strawberry ruffled bowl. Has great elec. highlights throughout. SUPER!
- _____ 85. N-wood 9" white Wild Strawberry ruffled bowl. Nice frosty irid.
- _____ 86. N-wood 9" IG FRUITS & FLOWERS RUFFLED BOWL. RARE AND VERY SHARP!
- _____ 87. N 8" IB Wishbone ft'd ruffled bowl. Another great pastel!
- _____ 88. N 9" mari Wishbone ft'd plate.
- _____ 89. N-wood dark mari Memphis 8 pc punch set. Great dark color. Almost pumpkin. Always desirable
- _____ 90. N-wood mari Peacock at Fountain 8 pc punch set. A must for any collection
- _____ 91. N-wood DARK IB PEACOCK AT FOUNTAIN WATER PITCHER. WOW. THIS IS BEAUTIFUL!
- _____ 92. N-wood EMERALD GREEN SINGING BIRDS WATER PITCHER. ANOTHER TOP SHELF PITCHER! HOT!!!
- _____ 93. (5) green Singing Birds tumblers- choice
- _____ 94. (3) IB Peacock at Fountain tumblers- choice
- _____ 95. N-wood IG Daisy & Plume ft'd rosebowl w/ Rasp. int. One toe may be smoothed. RARE
- _____ 96. N-wood mari Peacock at Fountain compote. WOW!
- _____ 97. N-wood white Peacock at Fountain compote. Scarce
- _____ 98. N-wood IG Peacock at Fountain compote. Another toughie!
- _____ 99. N-wood elec. green Fruits and Flowers compote. SUPER
- _____ 100. RARE N-wood BLUE DAISY & PLUME CANDY DISH. ONLY A COUPLE OF THESE KNOWN. RARE
- _____ 101. M-burg 8" VASELINE BIG FISH TRI-CORNERED BOWL. EXCEEDINGLY RARE PIECE AND NO DOUBT VASELINE! WHAT A BOWL!
- _____ 102. M-burg 9" VASELINE STRAWBERRY WREATH DEEP ROUND BOWL. VERY RARE. JUST A COUPLE KNOWN.
- _____ 103. M-burg 9" radium purple Strawberry Wreath ICS bowl. Killer radium irid.
- _____ 104. M-burg 5" BLUE PEACOCK AT URN 3-1 EDGE BOWL. VERY RARE PIECE OF BLUE. NO BEE OR BEADS
- _____ 105. M-burg 5" BLUE HANGING CHERRIES 3-1 EDGE BOWL. ANOTHER VERY RARE PIECE
- _____ 106. M-burg 5" purple Peacock at Urn berry bowl. Radium. This is the proof bowl- part of leg missing RARE
- _____ 107. M-burg 10" RADIUM PASTEL MARI NESTING SWANS RUFFLED BOWL. ABSOLUTLY STUNNING!
- _____ 108. M-burg 10" radium green Nesting Swans ruffled bowl. Super nice.
- _____ 109. M-burg green Roses & Fruit compote
- _____ 110. M-burg 10" green Vintage ICS bowl w/ Hobnail back. Very rare bowl
- _____ 111. M-burg 10" mari Vintage ICS bowl w/Hobnail back. Another tough bowl to find
- _____ 112. M-burg 10" green Seaweed ICS bowl. Here's one you don't see everyday.
- _____ 113. M-burg 10" mari Rosalind ICS bowl. Nice
- _____ 114. M-burg 8 1/2" green Rosalind ICS bowl. Very rare size
- _____ 115. M-burg 10" purple Many Stars ICS bowl. Great radium irid.
- _____ 116. M-burg 8" GREEN GRAPE LEAVES SQUARE BOWL. KILLER BLUE RADIUM IRID ON A RARE PIECE OF GLASS.
- _____ 117. M-burg 5" rad. purple Blackberry Wreath ICS bowl.
- _____ 118. M-burg 6" purple Peacock at Urn ICS bowl. Satin
- _____ 119. M-burg 6" RADIUM MARI BLACKBERRY WREATH PLATE. WHAT A GREAT PIECE OF GLASS!
- _____ 120. M-burg 10" GREEN PEACOCKS ICS BOWL. VERY RARE BOWL. RADIUM
- _____ 121. KILLER M-burg 10" RADIUM PASTEL MARI PEACOCKS ICS BOWL. VERY RARE TO LOOK LIKE THIS! BUY IT!
- _____ 122. M-burg RADIUM PURPLE PEACOCKS ICS BOWL. KILLER BLUE RADIUM IRID ON A RARE BOWL.
- _____ 123. M-burg radium purple Peacock at Urn ICS bowl. Very scarce bowl to find in radium, usually satin..
- _____ 124. M-burg 7" green Little Stars ruffled bowl
- _____ 125. M-burg 7" mari Little Stars ruffled bowl
- _____ 126. IMPERIAL ELEC PURPLE BROKEN ARCHES PUNCH BOWL AND BASE. KILLER ELEC IRID. RARE
- _____ 127. IMPERIAL ELEC PURPLE IMP GRAPE 11 PC PUNCH SET. WOW! VERY RARE AND COMPLETE!
- _____ 128. Imperial 16" mari Smooth Panel funeral vase
- _____ 129. Imperial amber Loganberry vase. RARE and very nice!
- _____ 130. Imperial emerald green Hobstar Flower compote. Very rare
- _____ 131. Imperial clambroth Scroll Embossed compote
- _____ 132. RARE IMPERIAL VIOLET BLUE SCROLL EMBOSSED COMPOTE. VERY RARE AND NICE
- _____ 133. Imperial elec purple Open Rose creamer.
- _____ 134. BLUE 6" IMPERIAL GRAPE PLATE. SUPER RARE AND BEAUTIFUL. ONLY 4 OR 5 OF THESE KNOWN





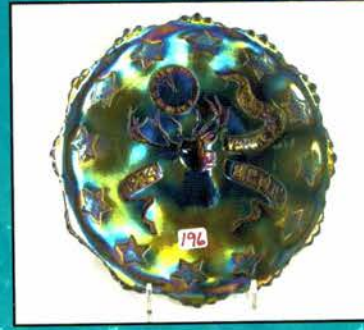
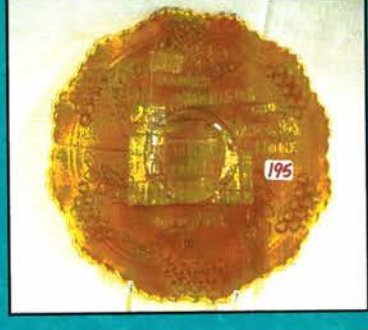
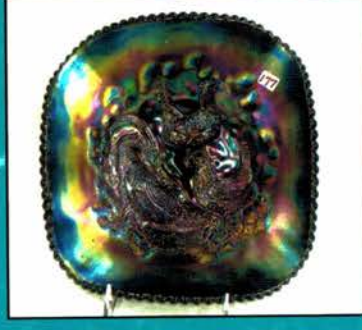
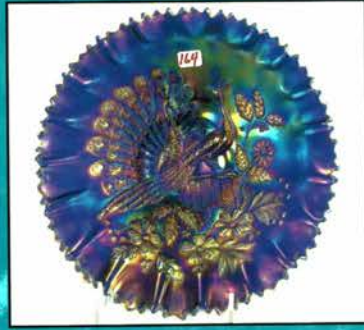




135. IMPERIAL 6" BLUE HEAVY GRAPE DEEP ROUND BOWL. ANOTHER RARE PIECE OF IMPERIAL THAT'S VERY NICE!
136. SUPER RARE IMPERIAL 9" BLUE HATTIE RUFFLED BOWL. HAS BEAUTIFUL MULTICOLOR IRID!!!
137. IMPERIAL ELEC. PURPLE HATTIE CHOP PLATE. THESE ARE EXTREMELY HARD TO FIND WHEN THEY LOOK LIKE THIS.
138. Imperial pumpkin mari. Hattie chop plate. Dark color.
139. Imperial 9" elec. purple Open Rose plate. Super irid!!
140. VERY RARE IMPERIAL 9" SMOKE SHELL & SAND FLAT PLATE. WONDERFUL PASTEL PLATE!
141. IMPERIAL 9" ELEC. PURPLE SHELL & SAND PLATE. VERY SCARCE!
142. Imperial 9" elec. purple Scroll Embossed plate.
143. Imperial 7" elec. purple Heavy Grape plate.
144. Imperial lavender Windmill pickle dish. Nice pastel
145. Imperial elec. purple Pansy dresser tray.
146. Imperial 9" lavender Pansy low ruffle bowl.
147. Killer elec. purple Imperial 9" Grape ruffled bowl.
148. Imperial 9" clambroth Grape low ruffled bowl
149. Imperial 9" mari. Grape plate.
150. Rare Imperial 9" moonstone Grape deep round bowl Very rare color.
151. N-wood 8 1/2" ICE BLUE OPAL PEACOCKS RUFFLED BOWL. EXTREMELY RARE W/GREAT PASTEL IRID!
152. N-wood 8 1/2" black amy. Stippled Peacocks ruffled bowl. Rare
153. N-wood 8 1/2" mari. Stippled Peacocks ruffled bowl.
154. N-wood 8 1/2" green Stippled Peacocks ruffled bowl. Rare. Have never seen three Stippled Peacocks bowls in the same auction!!!!!!
155. N-wood 8 1/2" IB Peacocks ruffled bowl. Scarce.
156. N-wood 8 1/2" IG Peacocks ruffled bowl. Very scarce.
157. N-wood 9" radium elec. blue Peacocks plate. Real Beautiful!
158. N-wood 9" green Peacocks plate w/PB plate. Scarce.
159. N-wood 9" radium IG Peacocks plate. Best one we've ever seen!
160. N-wood 9" renninger blue Stippled Peacocks plate. Extremely rare color w/nice detail.
161. N-wood 9" radium mari. Stippled Peacocks plate. Super!
162. Beautiful N-wood 9" electric lavender Peacocks PCE bowl. A real beauty!
163. N-wood 9" mari. Peacocks PCE bowl.
164. N-wood 9" elec. blue Peacocks PCE bowl. Scarce.
165. N-wood 9" electric green Peacocks PCE bowl w/super blue and yellow irid. Wonderful!
166. N-wood 9" elec. purple Peacocks PCE bowl.
167. N-wood 9" purple Peacocks PCE bowl. A bit silvery.
168. N-wood elec. blue Peacock at the Fountain fruit bowl.
169. N-wood lavender Peacock at the Fountain fruit bowl Tremendous pastel irid. Rare color!!!
170. FENTON BLUE G & C LOW FRUIT BOWL "COMPLIMENTS OF PACIFIC COAST MAIL ORDER HOUSE-LA". ONE OF ONLY TWO PERFECT EXAMPLES KNOWN. A TOP ADVERTISING PIECE IN ANY COLLECTION.
171. N-wood green G & C low footed fruit bowl. Scarce
172. Fenton 10" elec. blue Chrysanthemum footed ICS bowl. Beautiful!
- 172a KILLER N-wood 9" AQUA OPAL THREE FRUITS PLATE. ONE OF THE NICEST PATEL EXAMPLES WE HAVE EVER SEEN! BEAUTIFUL PLATE!!
173. RARE N-wood ICE BLUE OPAL GOOD LUCK RUFFLED BOWL. HARDLY EVER SOLD. ONE OF THE HARDEST PIECES OF GOOD LUCK TO GET!
174. N-wood 8 1/2" SAPPHIRE Good Luck ruffled bowl. Has wonderful pastel irid.
175. N-wood 9" green Good Luck plate. Tremendous irid. Pushing emerald color!!!!
176. N-wood 9" Mari Stipple Good Luck plate Scarce
177. Dugan 10" ELEC PURPLE FARMYARD SQUARE BOWL. FIRST ONE TO SELL IN A LONG TIME!
178. Dugan 11" purple Victorian 8-ruffled bowl SCARCE
179. Dugan Elec purple Holly Berry Ruffled Gravy boat
180. Dugan 9" Peach opal Fanciful Plate
181. Dugan 9" Peach Opal Fanciful ICS Bowl
182. Dugan 9" Frosty white Roundup 3-1 Edge Bowl
183. Fenton Green Persian Medallion large Compote. RARE Color
184. Fenton Elec Green Orange tree Hatpin holder. Has Wonderful elec. blue irid. I don't think there is a better one!
185. Fenton 8.5" MMG Holly ICS Bowl RARE!
186. Fenton 8" blue Vintage CRE bowl
187. Fenton 8" blue Orange Tree ICS bowl
188. Fenton 8.5" Elec./Emerald Green Peacock At Urn 8-ruffled bowl. Wonderful BLUE iridescence!
189. Fenton 9" green Dragon & Strawberry footed ruffled bowl SCARCE
190. Fenton 7" mari Lions plate GREAT DETAIL & color SCARCE
191. Fenton 6" Radium Blue Lions Deep round bowl
192. Fenton 6" amber Horsehead Medallion Deep round bowl
193. Fenton 7" green Horsehead Medallion footed ruffled bowl
194. Fenton 7" ELEC BLUE ILLIONIS SOLDIERS AND SAILORS PLATE. WONDERFUL DETAIL
195. Fenton 7" MARI ILLIONIS SOLDIERS AND SAILORS PLATE. WONDERFUL DETAIL
196. Fenton 7" SUPER ELEC BLUE 1914 PARKERSBUGE ELKS PLATE. ONE OF THE FINEST PLATES YOU'LL SEE!
197. Fenton 6" purple 1910 Detroit Elks ICS bowl. Rare color!
198. KILLER Fenton 9" BLASTING ELC BLUE PEACOCK AT URN PLATE. BUY IT!
199. Fenton 9" Dark mari Peacock at Urn plate Good color. You'll like this one!
200. Fenton 9" Dark mari Heart & Vine Spectors Dept. Store Plate SUPER BRIGHT iridescence
201. Fenton 9" Purple Birmingham Age Harold plate. Super pressing - HIGHLY desirable
202. Fenton 9" ELEC blue Heart & Vine plate. RARE !
203. Fenton 9" blue Persian Medallion Plate
204. Fenton 9" mari Peacock & Grape plate

- _____ 205. Fenton 9" BLUE PETER RABBIT PLATE. ONE OF THE MOST DESIRED FENTON PLATES
- _____ 206. Fenton 9" ELEC PURPLE CAPTIVE ROSE PLATE BLASTING W/COLOR
- _____ 207. Fenton 9" green Captive Rose plate Scarce color
- _____ 208. Fenton 9" mari Captive Rose plate
- _____ 209. Fenton 8" Peach Opal Peacock & Grape footed ICS bowl
- _____ 210. Fenton 9" blue Ribbon Tie 3-1 edge low bowl
- _____ 211. FENTON GREEN ORANGE TREE FRUIT BOWL VERY RARE COLOR W/GREAT IRIDESCENCE
- _____ 212. Fenton 8" mari Concord Ruffled Bowl Great Color
- _____ 213. Fenton 8" Persian Blue Vintage 8-ruffled bowl. Very rare
- _____ 214. Fenton 9" Emerald Green Vintage ICS bowl. I have never seen one close to this!!!
- _____ 215. RARE Fenton 7" Peach Opal Acorn Bowl
- _____ 216. Fenton 8.5" Peach Opal Peacock & Grape 8-ruffled bowl
- _____ 217. Fenton 8.5" mari Peacock & Grape 8-ruffled bowl
- _____ 218. FENTON 9" AO DRAGON & LOTUS 8-RUFFLED BOWL. RARE COLOR
- _____ 219. Fenton 10" ELEC BLUE BUTTERFLY & BERRY CENTERPIECE BOWL. JUST A COUPLE KNOWN
- _____ 220. Fenton BLUE/ELEC BLUE BUTTERFLY & BERRY FOOTED FERNER
- _____ 221. Fenton 8" Persian Blue Lotus & Grape ICS bowl
- _____ 222. Fenton 8.5" Purple Orange Tree ICS bowl
- _____ 223. N-wood IG Corn Vase
- _____ 224. N-wood- AO Daisy & Drape footed vase. SUPER
- _____ 225. N-wood- AO Dandelion Mug
- _____ 226. Peach Opal 5" Thin Rib Squatty vase
- _____ 227. Howard Furniture Green Four Pillars Vase
- _____ 228. N-wood 11" Russet Green Thin Rib vase
- _____ 229. N-wood 8.5" Blue Nippon Ruffled Bowl. Has nice ELEC highlights
- _____ 230. N-wood 8.5" Purple Nippon ruffled bowl
- _____ 231. N-wood- 8.5" Pumpkin mari Nippon ruffled bowl. Super Color
- _____ 232. N-wood- 9" IB Nippon PCE bowl
- _____ 233. N-wood 8.5" Emerald Green Rose Show bowl. Beautiful color. Has small flake on edge. RARE !
- _____ 234. N-wood- 8.5" PASTEL AO ROSE SHOW BOWL. ONE OF THE BEST AROUND
- _____ 235. N-wood-9" BLASTING EM. GREEN ROSE SHOW PLATE. SMALL CHIP ON EDGE BUT YOU WONT CARE ONCE YOU'VE SEEN THE PLATE
- _____ 236. N-wood-9" BEAUTIFUL ELEC. BLUE ROSE SHOW PLATE. EXTREMELY WONDERFUL PLATE!!
- _____ 237. N-wood- 9" pumpkin mari Rose Show plate SUPER
- _____ 238. N-wood- 9" IB Rose Show plate SCARCE
- _____ 239. N-wood- 9" Purple/Elec Purple Rose Show plate
- _____ 240. N-wood 8.5" Sapphire Stippled Three Fruits Ruffled bowl. Very Scarce
- _____ 241. N-wood 8.5" white Stippled Three Fruits Ruffled bowl
- _____ 242. N-wood- 8.5" lime green Stippled Three Fruits Ruffled bowl. Very scarce
- _____ 243. N-wood- 8.5" Elec Blue Stippled Three Fruits ruffled bowl
- _____ 244. N-wood- 8.5" Mari Stippled Three Fruits ruffled bowl
- _____ 245. N-wood- 8.5" purple Stippled Three Fruits ruffled bowl w/Electric highlights
- _____ 246. N-wood green 8.5" Stippled Three Fruits ruffled bowl
- _____ 247. N-wood 9" HOREHOUND STIPPLED THREE FRUITS PLATE. A GREAT PASTEL PLATE WITH NICE DETAIL
- _____ 248. N-wood- 9" ELEC LAVENDER STIPPLED THREE FRUITS PLATE SUPER
- _____ 249. N-wood- 9" pastel mari Stippled Three Fruits plate w/ Bright yellow iridescence
- _____ 250. N-wood- 8.5" AO Stippled Three Fruits footed bowl w/Butterscotch iridescence
- _____ 251. Purple Top of the Morning hat pin
- _____ 252. Purple Big Butterfly hat pin
- _____ 253. Czech?? 13" blown floral vase w/ruby flowers & flash iridescence.
- _____ 254. N-wood Elec. Blue Butterfly Bonbon w/threaded back
- _____ 255. N-wood pumpkin mari Harvest Flower compote
- _____ 256. Fenton 5" purple Panther footed Sauce
- _____ 257. Fenton 6" mari Sail Boats Bowl
- _____ 258. Fenton 6" amy. Sail Boats Bowl
- _____ 259. N-wood 5" white Grape and Cable ICS bowl
- _____ 260. Fenton mari Rose Tree ICS bowl. RARE. Is lacking iridescence but the only one we have to sale today
- _____ 261. Cambridge mari Large Buzz Saw Cruet
- _____ 262. Mari Daisy Cut Bell
- _____ 263. EXTREMELY RARE IG ACORN BURR 7-PIECE PUNCH SET. TREMENDOUS PASTEL IRIDESCENCE ON A RARE PUNCH BOWL. DOES HAVE A POLISHED FLUTE. FIRST CHANCE IN A LONG TIME TO BUY ONE
- _____ 264. Mari Flowering Dill CRE JIP hat
- _____ 265. Fenton yellow Orange Tree mug
- _____ 266. Fenton Vaseline Orange Tree Mug
- _____ 267. (4) Blue Orange Tree Punch Cups. One money
- _____ 268. Mari Field Thistle chop plate. Rare
- _____ 269. Elec Purple Octagon tumbler
- _____ 270. Purple Raspberry tumbler
- _____ 271. Blue Orange Tree Orchard tumbler
- _____ 272. Elec Purple Peacock at Fountain tumbler. Chip on base
- _____ 273. (2) Mari Butterfly and Fern tumblers. One money
- _____ 274. Mari Star Medallion Tumbler
- _____ 275. WESTMORLAND ELEC PURPLE FLUTE COMPOTE. VERY RARE W/TREMENDOUS ELEC IRID.
- _____ 276. Dugan white Wreathed Cherries 4-pc. Table set. Super Rare! Frosty w/gold paint. Butter lid has a 1/2" crack at base but find another one!!!
- _____ 277. M-burg green Rosalind Variant compote. Super nice!
- _____ 278. N-wood blue Bushel Basket. Nice.
- _____ 279. Dugan mari. Garden Path Variant Rosebowl. Scarce.
- _____ 280. N-wood mari. Wishbone tumbler. Scarce.

Thanks for participating in today's auction!!!



Jim Wroda Auction Services

5239 St. Rt. 49 South
Greenville, OH 45331
www.auctionzip.com ID# 11511
www.jimwrodauction.com



PRESORTED
FIRST CLASS MAIL
U.S. POSTAGE
PAID
CELINA, OH
PERMIT NO. 99

*****FIRST CLASS DELIVERY*****

LEE MARKLEY
502 N. BROADWAY
PO BOX 306
MENTONE IN 46539-0306



HOACGA Carnival Glass Convention Auction

*Featuring the Judy Maxwell Carnival Glass Collection
Saturday April 26th, 2008 at 9:30 A.M.*

The Morey Mansion
Redlands, CA

