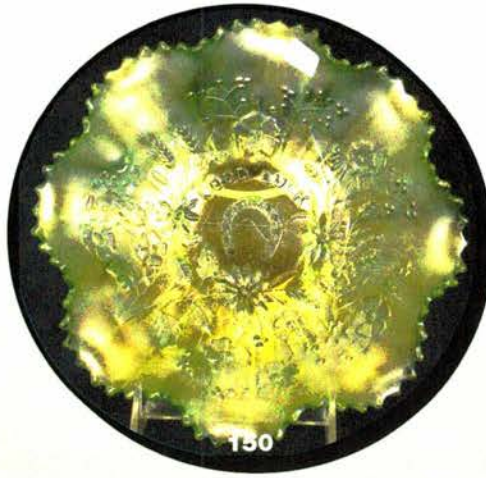
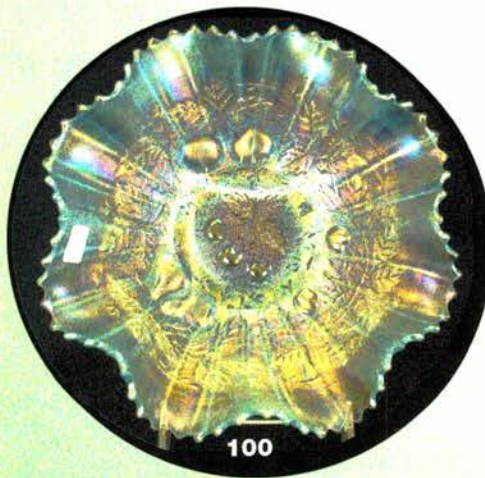
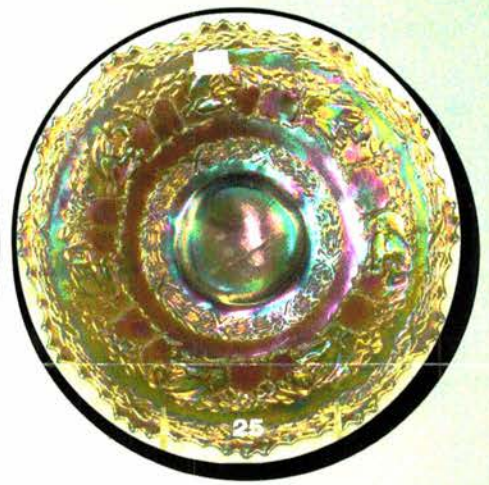
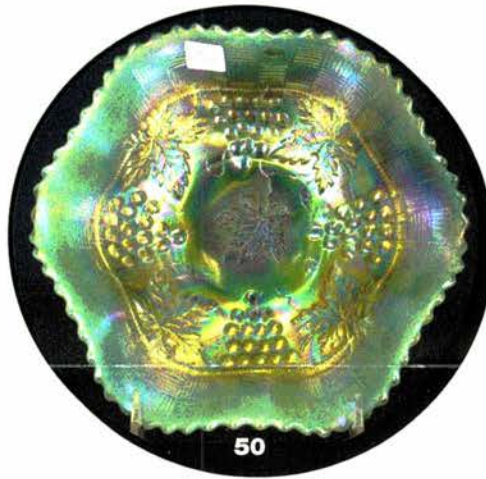
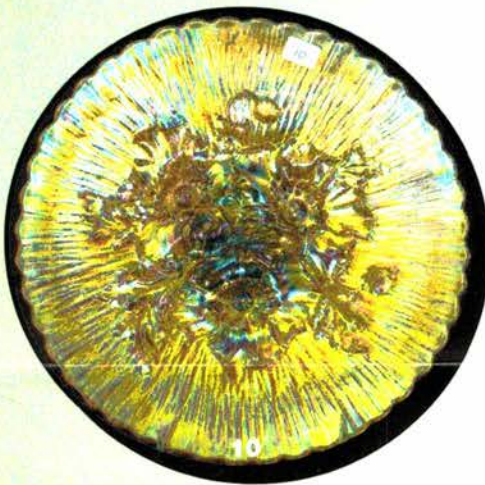


Auction

*San Diego / Southern California Carnival Glass Club's
14th Annual Convention*

Saturday, March 8th, 2008 -- 9:30 A.M.



*Country Suites
1945 E. Holt Blvd.
Ontario, California*

Call (909)390-7778 for reservations

JIM & JAN SEECK

Seeck Auctions

641-424-1116



SATURDAY, MARCH 8, 2008 – 9:30 A.M.



Country Suites -- Ontario, California

NO BUYER'S PREMIUM

OPEN TO THE PUBLIC

Don't forget to check out our website for lots of pictures!

www.seeckauction.com

Also, please email us and we will put you on our email mailing list for auction notices.

Seeck Auctions is heading to Southern California this year with a super nice auction full of glass. Several pieces in the auction are from the Swede Tilberg Collection and you know that those are all gorgeous. We have also added small collections from Indiana and Minnesota and a few super rare pieces from overseas. It has been a loooong winter for us and we are looking forward to some warm and sunny weather!

Call the Hotel direct for room reservations: 909-390-7778.

San Diego / Southern Calif. Convention info: Contact President Judy Maxwell at 909-794-4843.

Terms: Cash or Check, VISA and MasterCard accepted w/proper ID. **3% Clerking Fee** on all purchases except for payment of cash or check. Announcements made day of sale take precedence over any printed information.

** Sales Tax will be charged, please bring your tax-exempt numbers.

JIM & JAN SEECK
641-424-1116

Seeck Auctions

EMAIL:
jimjan@seeckauction.com

ABSENTEE BID POLICY

1. Write-in bids will be accepted by sending the numbers of the item(s) desired and the amount bid on each to:
Seeck Auctions, PO Box 377, Mason City, Iowa 50402.
2. You may call in your bids previous to the auction at (641)424-1116. (this is not live phone bidding)
3. You may **email** your bids to us: **jimjan@seeckauction.com** Continue to include the numbers of the item(s) you would like to bid on and amount bid on each, please include your name and telephone number.
4. Live phone bidding is available. Bidding must start on item at \$500. Please call for details.
5. There is a **\$7 handling charge** for each successful bid. Shipping and insurance charges are additional.
6. Bidders will be notified by phone/email if their bid(s) are successful. This will be done 1 - 3 days after the auction.
7. Please have all bids in by **Wed., March 5th**. All bids (by mail, phone or **email**) after this date may not be carried out.
8. Please place bids in the following increments: \$1 to \$300 - \$5 increments \$300 up - \$25 increments.
9. **If you do not receive an item that sold for less than your bid, assume we cancelled your bid because the piece of glass had below average color, manufacture problem, damage or was not listed correctly.**
10. Auction results are posted on our website within 7 days of the auction.

- ___ 1. Peacock & Grape spt ftd ruffled bowl - amethyst
- ___ 2. File creamer - marigold
- ___ 3. Wreath of Roses bonbon - amethyst
- ___ 4. Blackberry Bramble ruffled compote - amethyst
- ___ 5. Australian Butterfly Bower 6" dome ftd bowl - purple
- ___ 6. Peacock Tail ruffled compote - amethyst
- ___ 7. Peacock Tail ruffled compote - marigold
- ___ 8. Puzzle round bonbon - peach opal
- ___ 9. Iris buttermilk goblet - marigold
- ___ **10. Poppy Show 9" plate - marigold - fantastic, pink & yellow irid. covers the entire plate!**
- ___ 11. Wild Rose open edge ftd bowl - green
- ___ 12. Pony 6 ruffled bowl - purple
- ___ 13. Pony 6 ruffled bowl - marigold
- ___ 14. Blackberry Spray JIP CRE hatshape - marigold
- ___ **15. Hearts & Flowers ruffled compote - ice blue - very scarce & desirable**
- ___ **16. Hearts & Flowers ruffled compote - marigold - lots of pink & yellow irid., a beauty**
- ___ 17. Hearts & Flowers ruffled compote - white
- ___ 18. M'burg Rays & Ribbons ruffled bowl - marigold - radium
- ___ 19. M'burg Blackberry Wreath 9" 3 in 1 edge bowl - amethyst - silvery
- ___ **20. Tree Trunk 11" vase - aqua opal - very nice example, pretty**
- ___ **21. Tree Trunk 10 1/2" vase - ice blue - scarce, nice**
- ___ **22. Tree Trunk 10 1/2" vase - blue - scarce color, electric**
- ___ 23. Tree Trunk 9 1/2" vase - purple - super!
- ___ 24. Weeping Cherries 3 in 1 edge dome ftd bowl - marigold
- ___ **25. Peter Rabbit 9" plate - blue - absolutely spectacular, as pretty of one that I have seen, super plate!**
- ___ **26. Peter Rabbit 9" plate - green - also super pretty & very rare, has polished chip on collar base**
- ___ 27. Peacock at the Urn 6 ruffled bowl - blue
- ___ 28. Australian Kingfisher master ruffled bowls (2) - purple - choice
- ___ 29. Wide Rib 10" vase - peach opal
- ___ **30. Embroidered Mums bonbon - white - extremely rare & very pretty, a great bonbon!**
- ___ 31. Captive Rose 6 ruffled bowl - green - pretty
- ___ 32. Captive Rose 6 ruffled bowl - amethyst - pretty
- ___ 33. Lotus & Grape bonbon - blue
- ___ 34. Asters 9" deep round bowl - marigold
- ___ **35. Orange Tree hatpin holder - marigold - super dark, top is formed like a Grape & Cable, unusual & very pretty**
- ___ **36. Orange Tree hatpin holder - blue - very pretty**
- ___ 37. Mirrored Lotus 7" ruffled bowl - blue
- ___ 38. Wreathed Cherry 7 pc. banana boat shaped berry set - amethyst - master bowl lacks irid.
- ___ 39. Pinched Swirl rosebowl - peach opal
- ___ **40. Acorn Burrs 7 pc. water set - purple - pretty set & very desirable**
- ___ 41. Basketweave Open Edge JIP basket - green - scarce color
- ___ 42. Basketweave Open Edge JIP basket - blue
- ___ 43. M'burg Primrose ruffled bowl - green - satin & nice
- ___ 44. Hattie ruffled bowl - marigold - dark
- ___ **45. Pulled Loop 5" squat vase - purple - has 6" mouth, neat & unusual shape for this vase, pretty**
- ___ 46. Beaded Cable rosebowl - purple
- ___ 47. Beaded Cable rosebowl - marigold
- ___ 48. Beaded Cable rosebowl - blue opal - non irid.
- ___ 49. Question Mark bonbon - purple
- ___ **50. Grape & Cable 7" ruffled bowl - aqua opal - super pretty & extremely rare, not many of these known, fabulous!**
- ___ 51. Grape Delight rose bowl - purple
- ___ 52. Maple Leaf 8 pc. berry set - purple
- ___ 53. Orange Tree ftd sherbets (7) - marigold - choice
- ___ 54. Enameled Magnolia & Drape 7 pc. water set - marigold
- ___ **55. Tornado small size vase - marigold - rare & nice**
- ___ **56. Tornado small size vase - purple - nice & scarce**
- ___ 57. Fruits & Flowers bonbon - purple - nice
- ___ 58. Fruits & Flowers bonbon - green
- ___ 59. Stream of Hearts crimped edge ruffled compote - marigold
- ___ **60. Good Luck 9" plate w/BW back - purple - very pretty**
- ___ **61. Good Luck 9" plate w/BW back - marigold - scarce, nice**
- ___ 62. Octet dome ftd ruffled bowl - purple
- ___ 63. N's Stippled Rays 11" ruffled bowl - green
- ___ 64. Grape & Cable bonbon - purple
- ___ 65. Acorn Burrs master berry bowl - green
- ___ **66. Acorn Burrs 7 pc. berry set - purple - scarce & nice**
- ___ 67. Heart & Vine ruffled bowl - amethyst
- ___ 68. M'burg Mayan IC shaped bowl - green - radium
- ___ 69. Rays & Ribbons ruffled bowl - green
- ___ **70. Wishbone ftd ruffled bowl - green - emerald & fantastic, this is beautiful!**
- ___ **71. Wishbone ftd ruffled bowl - white - scarce & very nice**
- ___ **72. Wishbone ftd ruffled bowl - purple - electric irid., a beauty**
- ___ **73. Wishbone ftd ruffled bowl - marigold - pastel & fantastic**

- ___ 74. Wishbone ftd ruffled bowl - amethyst - very nice
- ___ **75. Stippled Peacocks 9" plate w/ribbed back - purple - extremely rare to find this plate stippled, super pretty**
- ___ **76. Stippled Peacocks 9" plate w/ribbed back - marigold - pastel pink irid.**
- ___ 77. Starfish bonbon - purple
- ___ 78. Grape & Cable master IC bowl - purple - scarce & nice
- ___ 79. Birds & Cherries ruffled compote - blue
- ___ **80. Dandelion 7 pc. tankard water set - purple - very pretty set & desirable**
- ___ 81. Target 6" squatty vase - peach opal
- ___ 82. Dogwood Sprays dome ftd ruffled bowl - purple - super pretty!
- ___ 83. Dogwood Sprays dome ftd ruffled bowl - peach opal
- ___ 84. Acanthus deep round bowl - marigold
- ___ **85. N's Town Pump - purple - very scarce, nice, a classic**
- ___ 86. Open Rose 9" plate - marigold
- ___ 87. Open Rose 9" plate - green
- ___ 88. Rustic 16" mid-size vase - blue
- ___ 89. Feathered Serpent 9" CRE bowl - marigold
- ___ **90. M'burg Peacock at Urn 10" ruffled bowl - green - radium & pretty**
- ___ 91. Star Medallion milk pitcher - smoke
- ___ 92. Petal & Fan lg size ruffled bowl - purple - pretty, minor pinpoint on edge
- ___ 93. Thistle 3 in 1 edge bowl - green
- ___ 94. Thistle 3 in 1 edge bowl - marigold
- ___ **95. Orange Tree fruit bowl - blue - beautiful**
- ___ 96. MaryAnn vase - amethyst - very pretty
- ___ 97. MaryAnn vase - marigold
- ___ **98. Sunflower spt ftd ruffled bowl - marigold - dark, pumpkin irid.**
- ___ 99. Sunflower spt ftd ruffled bowl - purple
- ___ **100. Stippled Three Fruits ruffled bowl w/ribbed back - ice blue - dark & super, rare, rare**
- ___ **101. Stippled Three Fruits ruffled bowl w/ribbed back - aqua opal - great opal on a very rare bowl**
- ___ **102. Stippled Three Fruits ruffled bowl w/ribbed back - purple - very pretty, scarce**
- ___ 103. Strawberry 9" plate w/BW back - green
- ___ 104. Strawberry 9" plate w/BW back - purple
- ___ **105. Mikado lg IC shaped compote - blue - very nice, scarce**
- ___ 106. Raspberry gravy boat - purple
- ___ 107. Ski Star lg ruffled bowl - purple
- ___ 108. Ski Star lg ruffled bowl - peach opal
- ___ 109. Round Up 3 in 1 edge bowl - blue - has unusual radium irid.
- ___ 110. Grape & Cable 7 pc. water set - purple - carnival classic
- ___ 111. Grape & Cable water pitcher - marigold
- ___ 112. Holly 9" plate - marigold - super pretty
- ___ 113. Holly 9" plate - white - pretty
- ___ 114. M'burg Blackberry Wreath ruffled sauce - amethyst - satin
- ___ **115. Twigs crimped top vase - purple - might be the best one we've seen, has multi-colored irid. on outside of vase**
- ___ 116. Garden Path Variant ruffled bowl - marigold
- ___ 117. Nautilus whimsey creamer - peach opal - nice
- ___ 118. Nautilus whimsey sugar - peach opal - nice
- ___ 119. Orange Tree breakfast set - blue
- ___ **120. N's Grape & Cable fruit bowl - purple**
- ___ 121. N's Grape & Cable centerpiece bowl - white opalescent - non-carnival, rare
- ___ 122. Louisa rose bowl - green
- ___ 123. Holly ruffled hatshape - red - pretty, looks red!
- ___ 124. Holly ruffled hatshape - marigold
- ___ **125. Fenton's Peacock at Urn 8 ruffled bowl - Persian Blue - fantastic, irid. is even & wonderful, as nice as I've seen!**
- ___ 126. Fenton's Peacock at Urn 8 ruffled bowl - blue - pretty
- ___ 127. Imperial Grape 6" plate - marigold
- ___ 128. Pansy low ruffled bowl - lavender
- ___ 129. Pansy ruffled bowl - purple
- ___ **130. M'burg Holly Sprig card tray shaped bonbon - amethyst w/painted leaves - very unusual piece, has radium irid., only one known!**
- ___ 131. Lattice & Points 4 1/2" squatty vase - white
- ___ 132. Fashion 10 pc. punch set - marigold
- ___ **133. Hearts & Trees master berry bowl - marigold - nice, scarce pattern**
- ___ 134. Holly & Berry ruffled bowl - purple
- ___ **135. Diamond Points 10" vase - green - emerald & fantastic, beautiful!**
- ___ **136. Diamond Points 10" vase - blue - fantastic, electric!**
- ___ 137. Diamond Points 10" vase - purple - a beauty
- ___ 138. Heavy Grape 8" plate - marigold - pastel & pretty
- ___ 139. Grapevine Lattice 6" plate - marigold
- ___ **140. Peacock at the Fountain 4 pc. table set - marigold - scarce & very nice**
- ___ 141. Vintage fernery - green - pretty
- ___ 142. Vintage fernery - blue - super
- ___ **143. Daisy Cut bell - marigold**
- ___ 144. Feldman Bros. Furniture Basketweave Open Edge 2 sides up hat - marigold
- ___ **145. Orange Tree 8 pc. punch set - blue - has ruffled top, scarce**
- ___ 146. Ten Mums ruffled bowl - blue
- ___ 147. Leaf Rays nappy - purple
- ___ 148. Nippon ruffled bowl w/BW back - green - scarce
- ___ 149. Double Stemmed Rose dome ftd bowl - marigold

- ___ 150. **Good Luck ruffled bowl w/ribbed back - ice green - extremely rare bowl & highly desirable!**
- ___ 151. Starfish compote - peach opal
- ___ 152. Grape & Cable powder jar - purple - nice
- ___ 153. **Australian Butterfly Bush and Waratah lg IC shaped compote - purple - super irid.**
- ___ 154. Blackberry Spray 2 sides up hat - blue
- ___ 155. **Cobblestone ruffled bowl - purple - super pretty**
- ___ 156. Cobblestone ruffled bowl - marigold - super
- ___ 157. Wishbone & Spades 6" plate - purple - nice
- ___ 158. Corn bottle - marigold - nice
- ___ 159. Stretch Glass cigarette holder w/wheel carved flower - marigold
- ___ 160. Stretch Glass Dolphin fan vase - tangerine
- ___ 161. Stretch Glass 5" flared top vase - red
- ___ 162. Stretch Glass Laurel Leaves sherbet - celest blue
- ___ 163. Stretch Glass rolled edge console bowl - celest blue
- ___ 164. Stretch Glass ring tree - ice green
- ___ 165. Stretch Glass Wide Panel sherbet - red
- ___ 166. Stretch Glass small compote - pink
- ___ 167. Stretch Glass cologne bottle - vaseline
- ___ 168. N's Stretch Glass salt - vaseline
- ___ 169. Fenton's Stretch Glass nut cups - ice green, celest blue, vaseline(2) - choice
- ___ 170. Stretch Glass cream & sugar - amethyst
- ___ 171. Stretch Glass cvd puff boxes - vaseline, marigold & celest blue - choice
- ___ 172. Stretch Glass hldd basket & toothpick - purple
- ___ 173. Stretch Glass plates - various colors & sizes - choice
- ___ 174. **Stretch Glass Arched Flute w/tube top toothpick - wisteria - scarce**
- ___ 175. **Rose Show ruffled bowl - aqua opal - very pretty!**
- ___ 176. **Rose Show ruffled bowl - purple - scarce**
- ___ 177. Rose Show ruffled bowl - blue opal - not carnival, scarce
- ___ 178. **Paneled Dandelion tankard water pitcher - blue - scarce item**
- ___ 179. Fern ruffled compote - green
- ___ 180. **Australian Thunderbird master ruffled bowl - purple - pretty**
- ___ 181. Featherstitch ruffled bowl - blue
- ___ 182. Thistle banana boat - green - nice
- ___ 183. Floral & Grape water pitcher - purple
- ___ 184. Floral & Grape 7 pc. water set - marigold
- ___ 185. **Fenton's Peacock at Urn 9" plate - white - very pretty, scarce**
- ___ 186. **Fenton's Peacock at Urn 9" plate - blue - scarce**
- ___ 187. Pastel Swan salt - purple - scarce color
- ___ 188. Grape & Cable butterdish - purple - super pretty
- ___ 189. Bird & Grapes wall pockets (2) - marigold - choice
- ___ 190. **Singing Birds 7 pc. water set - purple - pitcher is fantastic**
- ___ 191. Cvd Hen on Nest - marigold
- ___ 192. **Beaded Bullseye 6 1/2" squatty vase - purple - has 6" mouth, super neat vase, rare & pretty**
- ___ 193. Concave Diamonds tumbler - vaseline
- ___ 194. Grape Arbor tumbler - white
- ___ 195. **Daisy & Drape flared out vase - blue - very rare color & nice**
- ___ 196. **Daisy & Drape flared out vase - aqua opal - also very nice**
- ___ 197. Ragged Robin ruffled bowl - blue - nice
- ___ 198. Persian Medallion 3 in 1 edge bowl - marigold - dark & nice
- ___ 199. Raindrops dome ftd ruffled bowl - peach opal
- ___ 200. **M'burg Peacock master IC bowl - green - radium & super, a beautiful piece!**
- ___ 201. Two Flowers lg ftd ruffled bowl - marigold - pretty
- ___ 202. Grape & Cable dresser tray - purple - nice
- ___ 203. M'burg Strawberry ruffled compote - marigold - radium & nice
- ___ 204. Illusion bonbon - blue
- ___ 205. **Crucifix candlesticks - marigold - very rare & highly desirable, nice matching set**
- ___ 206. Rococco vase - smoke - nice
- ___ 207. Rococco vase - marigold
- ___ 208. Orange Tree loving cup - blue - nice
- ___ 209. Orange Tree loving cup - marigold - dark & nice
- ___ 210. N's Bushel Basket - aqua opal - butterscotch & nice
- ___ 211. N's Bushel Basket - blue - nice
- ___ 212. N's Bushel Basket - lavender - pretty
- ___ 213. N's Bushel Basket - marigold - pretty
- ___ 214. Wild Rose ftd bowl - marigold - dark & super
- ___ 215. **Big Basketweave 10" vase - lavender - very pretty**
- ___ 216. Big Basketweave 10" vase - blue - scarce
- ___ 217. Big Basketweave 10" vase - marigold - super
- ___ 218. Drapery rosebowl - aqua opal - nice one
- ___ 219. Drapery rosebowl - blue - scarce color
- ___ 220. **Oriental Poppy 7 pc. water set - purple - scarce set, highly desirable**
- ___ 221. Wild Strawberry 8" handgrip plate - purple
- ___ 222. Wild Strawberry 10" ruffled bowl - purple - nice
- ___ 223. **M'burg Courthouse ruffled bowl - amethyst - scarce**
- ___ 224. Six Petal ruffled bowl - purple
- ___ 225. **Stippled Good Luck 9" plate w/ribbed back - reninger blue - super pretty example for this rare plate!**
- ___ 226. M'burg Hanging Cherries 10" ruffled bowl - marigold - satin & pretty

- _____ 227. **Wreath of Roses 11 pc. punch set - blue top w/amethyst base - cups are blue, very rare blue set, for some reason this set always seems to be mismatched**
 _____ 228. Australian Swan master bowl - marigold - pretty
 _____ 229. Wild Blackberry 3 in 1 edge bowl - green
 _____ 230. **Grape & Cable candle lamp - marigold - very hard to get, highly desirable**
 _____ 231. Bells & Beads 7" ruffled bowl - purple - nice
 _____ 232. Wishbone & Spades lg ruffled bowl - purple - scarce
 _____ 233. M'burg Hobnail Swirl rosebowl - marigold - nice
 _____ 234. Jeweled Hearts w/Rayed Interior lg ruffled bowl - peach opal
 _____ 235. **Poinsettia & Lattice ftd ruffled bowl w/ribbed back - purple - very scarce & nice**
 _____ 236. Lotus & Grape IC shaped bowl - blue - pretty
 _____ 237. **Peacocks ruffled bowl w/ribbed back - purple - nice**
 _____ 238. Persian Garden 6" plate - marigold
 _____ 239. Imperial Grape water carafe - purple
 _____ 240. **Stork & Rushes 7 pc. water set - blue - nice, scarce set**
 _____ 241. Butterflies bonbon - amethyst
 _____ 242. **Butterfly bonbon w/ribbed back - purple - as nice of one that I have seen**
 _____ 243. Butterfly bonbon w/plain back - green - nice
 _____ 244. Chrysanthemum lg ftd IC shaped bowl - blue - very flat, close to a chop plate
 _____ 245. **Stippled Good Luck PCE bowl w/ribbed back - reninger blue - very scarce & highly desirable**
 _____ 246. Rosette ftd ruffled bowl - purple
 _____ 247. Plaid ruffled bowl - blue - nice
 _____ 248. Enameled Daisy & Little Flower 7 pc. water set - blue
 _____ 249. Daisy row bowl - amethyst
 _____ 250. **N's Peacock at Urn master IC bowl - ice green - very pretty example, desirable**
 _____ 251. **N's Peacock at Urn master IC bowl - marigold - pastel & super, lots of pinks & blues!**
 _____ 252. **Kulor 6" vase - blue - very pretty, highly desirable**
 _____ 253. **Horse Medallion IC shaped ftd bowl - green - super pretty, rare & desirable**
 _____ 254. Small cvd dresser jar - marigold
 _____ 255. Orange Tree w/trunk 9" plate - white - scarce
 _____ 256. Lattice & Grape tankard water pitcher - marigold
 _____ 257. M'burg Hanging Cherries butter dish lid - amethyst
 _____ 258. **Fanciful IC shaped bowl - amethyst - pretty**
 _____ 259. Palm Beach whimsy 4 sides pinched in bowl - amethyst
 _____ 260. **Persian Medallion chop plate - blue - scarce & highly desirable**
 _____ 261. Heavy Vine cologne bottle - marigold
 _____ 262. **Heavy Vine candlesticks - marigold - rare set**
 _____ 263. Heavy Vine cvd powder jar - marigold
 _____ 264. N's Fine Rib 11" vase - purple - nice
 _____ 265. **Peacocks 9" plate w/ribbed back - marigold - very pretty**
 _____ 266. Lions IC shaped bowl - marigold - nice
 _____ 267. M'burg Nesting Swan ruffled bowl - green - satin & nice
 _____ 268. Fishnet epergne - purple - scarce
 _____ 269. M'burg Cosmos 6" IC shaped bowl - green - radium
 _____ 270. **Wishbone 9" ftd plate - purple - nice**
 _____ 271. Cherry Circles card tray shaped bonbon - blue
 _____ 272. Miniature Blackberry ftd plate - blue - scarce
 _____ 273. Blossomtime ruffled compote - purple - pretty
 _____ 274. Fine Cut & Roses candy dish - marigold - nick on ft
 _____ 275. **Fruits & Flowers 7" ruffled bowl - ice blue - dark & very pretty, extremely rare item, not many around**
 _____ 276. Grape & Cable sweetmeat - purple - nice
 _____ 277. **Vintage 3 in 1 edge bowl - Persian Blue - very rare color**
 _____ 278. Vintage 3 in 1 edge bowl - amethyst
 _____ 279. Vintage tri-cornered sauce - marigold - unusual shape
 _____ 280. **Three Row Open Edge IC shaped bowl - ice green - very scarce & nice**
 _____ 281. Four Flowers 6" plate - peach opal
 _____ 282. Grape & Cable 9" plate w/BW back - purple
 _____ 283. Pond Lily card tray shaped bonbon - green - pretty
 _____ 284. Wreath of Roses ruffled compote - green
 _____ 285. **M'burg Seacoast pin tray - amethyst - very rare & highly desirable**
 _____ 286. Peacock & Dahlia 7" IC shaped bowl - blue - pretty
 _____ 287. Isaac Benesch ruffled adv. bowl - amethyst - very nice
 _____ 288. Honeycomb rosebowl - peach opal
 _____ 289. **N's Dandelion mug - marigold - nice**
 _____ 290. Chrysanthemum IC shaped lg size ftd bowl - marigold - nice
 _____ 291. Grape & Cable hldd pin dish - purple
 _____ 292. Persian Medallion 4 sides up sauce - blue - rare shape
 _____ 293. Leaf & Beads rose bowl - purple
 _____ 294. Singing Birds mug - blue
 _____ 295. Singing Birds mug - purple
 _____ 296. **Hearts & Flowers ruffled bowl w/ribbed back - purple - scarce, nice**

- ___ 297. Five Hearts dome ftd round bowl - marigold - scarce pattern
- ___ **298. Daisy Wreath ruffled bowl - blue opal - very pretty**
- ___ 299. Carolina Dogwood ruffled bowls (2) - peach opal - both nice, choice
- ___ **300. Formal JIP vase - purple - scarce & very pretty**
- ___ 301. M'burg Holly Sprig bonbon - green - radium
- ___ **302. Embroidered Mums ruffled bowl w/ribbed back - amethyst - scarce, nice**
- ___ 303. Grape Arbor fruit bowl - marigold - scarce
- ___ 304. Holly IC shaped bowl - blue - pretty
- ___ **305. Poppy Pickle dish - blue - very pretty**
- ___ 306. Blackberry Spray square shaped hat - blue
- ___ 307. N's Peacock at Urn IC sauce - purple
- ___ 308. Flute toothpick - purple
- ___ 309. Dugan Cherries ftd ruffled bowl - purple
- ___ **310. Concord ruffled bowl - amethyst - pretty**
- ___ 311. Grape & Cable hatpin holder - purple
- ___ 312. M'burg Fleur De Lis dome ftd IC shaped bowl - amethyst - satin
- ___ 313. Dugan Cherries ftd ruffled bowl - purple - very pretty
- ___ 314. Fashion water pitcher - marigold
- ___ 315. Holly ruffled hatshape - marigold
- ___ 316. Vintage ruffled bowl - blue
- ___ 317. Stretch Glass Panel cvd candy jar - celest blue
- ___ 318. Drapery candy dish - ice blue - nice
- ___ 319. Blackberry Open Edge ruffled hat - blue
- ___ **320. M'burg Trout & Fly 3 in 1 edge bowl - amethyst - polished base, satin**
- ___ 321. Australian Kangaroo master ruffled bowl - marigold
- ___ 322. Four Flowers 10" ruffled bowl - purple - scarce
- ___ **323. 1910 Detroit Elks IC shaped bowl - green - lacks irid.**
- ___ 324. Little Barrel - marigold - nick on top edge
- ___ **325. N's Smooth Rays 7" ruffled bowl w/BW back - aqua opal - super, super pastel irid. w/great opal, can't say I've seen another one!**
- ___ 326. Fisherman's mug - purple
- ___ **327. Stag & Holly lg size IC shaped bowl - amber - very scarce color & nice**
- ___ 328. Australian Magpie master ruffled bowl - marigold
- ___ 329. M'burg Little Stars 7" ruffled bowl - green - satin
- ___ 330. Good Luck ruffled bowl w/BW back - marigold
- ___ 331. Star of David ruffled bowl - purple
- ___ 332. Victorian 10" ruffled bowl - purple - scarce
- ___ 333. Three Fruits 9" plate w/plain back - amethyst
- ___ 334. M'burg Rays & Ribbons 3 in 1 edge bowl - green - satin
- ___ **335. Orange Tree ruffled bowl - blue - super pretty**
- ___ 336. Brooklyn Bridge 10 ruffled bowl - marigold - scarce
- ___ 337. Scales IC shaped bowl - blue opal - scarce color
- ___ 338. M'burg Zig Zag ruffled bowl - green - radium
- ___ 339. Soutache dome ftd ruffled bowl - peach opal
- ___ 340. Grape & Cable sweetmeat - purple
- ___ 341. Little Flowers 10" ruffled bowl - marigold
- ___ 342. N's Thin Rib 10" vase - blue - nice
- ___ 343. Grape & Cable cologne bottle - purple
- ___ 344. Apple Blossom Twigs low ruffled bowl - purple
- ___ 345. Blackberry & Rays ruffled compote - green
- ___ **346. Stippled Grape & Cable 9" plate w/ribbed back - sapphire - very rare plate, highly desirable, a beauty**
- ___ 347. Mayflower gaslight shade - marigold
- ___ 348. May basket - marigold
- ___ 349. Luster Rose lg round bowl - marigold
- ___ 350. 2 Contemporary pcs - choice
- ___ 351. ICGA 1993 Frolicking Bears lg tumbler - amber; 1997 ICGA Frolicking Bears lg tumbler - plum opal; 1999 ACGA Seacoast spittoon - blue - choice



Seeck Auctions

P.O. Box 377
Mason City, Iowa 50402

PRESORTED
FIRST-CLASS MAIL
U.S. POSTAGE PAID
MINNEAPOLIS, MN
PERMIT NO. 28534

T4 P1 *****AUTO**MIXED AADC 553

Lee Markley
PO Box 306
Mentone, IN 46539-0306

