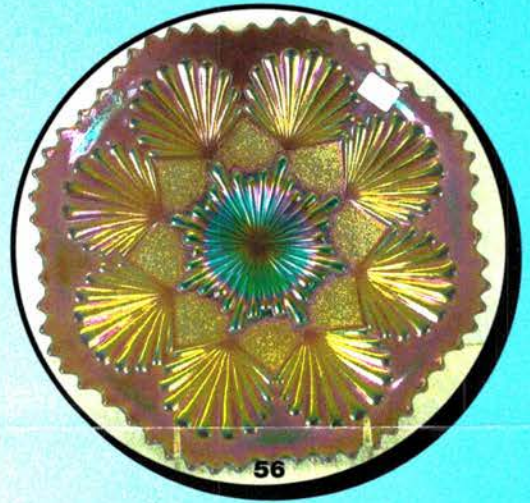
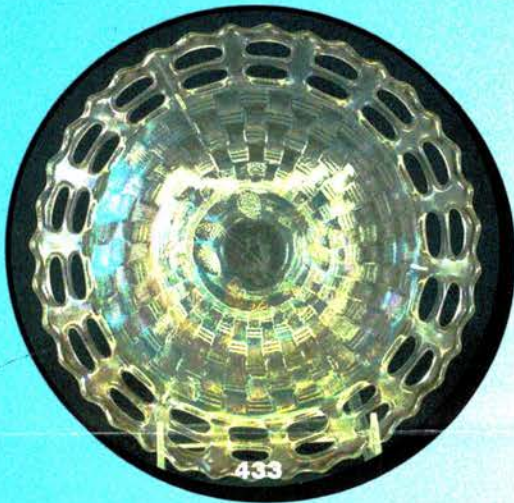


Texas Carnival Glass
Club Convention

Auction

The Jack and Eleanor Hamilton Collection

Saturday, March 1st, 2008 -- 9:30 A.M.



Crowne Plaza Dallas - Suites
7800 Alpha Road
Dallas, Texas

Call (972)233-7600 for reservations

JIM & JAN SEECK

Seeck Auctions

641-424-1116



SATURDAY, MARCH 1st, 2008 -- 9:30 A.M.



Crowne Plaza Dallas - Suites -- Dallas, Texas

NO BUYER'S PREMIUM

OPEN TO THE PUBLIC

**Don't forget to check out our website for lots of pictures!
www.seeckauction.com**

Also, please email us and we will put you on our email mailing list for auction notices.

Seeck Auctions is privileged to be auctioning the Eleanor and Jack Hamilton collection of Carnival Glass at the Texas Club Convention. Eleanor and Jack will be missed by so many as they were one of the first couples from Texas that we met when we started attending conventions. Eleanor loved the glass and Jack loved talking to the people! Eleanor's favorites were miniatures and small plates and she amassed several wonderful examples of each over the years. We hope you can make it to the convention and auction this year as the Texas Club has a fine line up of activities and seminars you will not want to miss.

The auction is open to the public. Please bring your own boxes and packing material to the auction, as we will not have any extra available. We will have a Friday evening preview. We are guessing the approximate time will be around 8 pm but will open for preview as soon as we are finished setting up.

Call the Hotel direct for room reservations: 972-233-7600. Let them know you are with the Texas Carnival Glass Club. Group rate ends February 8th.

Texas Club Convention info: Contact Club President Emmett Morgan at: 979-836-7896

Terms: Cash or Check, VISA and MasterCard accepted w/proper ID. **3% Clerking Fee** on all purchases except for payment of cash or check. Announcements made day of sale take precedence over any printed information.

Visit the Texas Carnival Glass Club Website: www.texascarnivalglass.org

**JIM & JAN SEECK
641-424-1116**

Seeck Auctions

**EMAIL:
jimjan@seeckauction.com**

ABSENTEE BID POLICY

1. Write-in bids will be accepted by sending the numbers of the item(s) desired and the amount bid on each to:
Seeck Auctions, PO Box 377, Mason City, Iowa 50402.
2. You may call in your bids previous to the auction at (641)424-1116. (this is not live phone bidding)
3. You may **email** your bids to us: **jimjan@seeckauction.com** Continue to include the numbers of the item(s) you would like to bid on and amount bid on each, please include your name and telephone number.
4. Live phone bidding is available. Bidding must start on item at \$500. Please call for details.
5. There is a **\$7 handling charge** for each successful bid. Shipping and insurance charges are additional.
6. Bidders will be notified by phone/email if their bid(s) are successful. This will be done 1 - 3 days after the auction.
7. Please have all bids in by **Wed., Feb. 27th**. All bids (by mail, phone or **email**) after this date may not be carried out.
8. Please place bids in the following increments: \$1 to \$300 - \$5 increments \$300 up - \$25 increments.
9. **If you do not receive an item that sold for less than your bid, assume we cancelled your bid because the piece of glass had below average color, manufacture problem, damage or was not listed correctly.**
10. Auction results are posted on our website within 7 days of the auction.

- ___ 1. Flowering Dill square shaped crimped edge hat shape - marigold
- ___ 2. M'burg Peacock Tail Variant ruffled compote - green - radium
- ___ 3. Two Flowers ruffled sauce w/no feet - amethyst – scarce, nice
- ___ **4. Field Thistle 6" plate - marigold**
- ___ 5. Thin Rib & Drape 5" vase - marigold
- ___ 6. M'burg Whirling Leaves ruffled bowl - amethyst – radium & nice
- ___ 7. Captive Rose ruffled bonbon - green
- ___ 8. Jacobean Ranger perfume bottle - marigold
- ___ 9. Fine Cut & Roses rose bowl - amethyst
- ___ **10. Scroll Embossed 8 " plate w/Hobstar & Tassel back - green - super pretty, extremely rare, I have only seen two or three**
- ___ 11. Four Seventy Four water goblet - marigold
- ___ 12. Four Seventy Four wine glass - marigold
- ___ **13. Four Seventy Four cordial - marigold - a cute little mini**
- ___ **14. Heavy Grape 8" plate - smoke - very scarce plate, nice**
- ___ **15. Heavy Grape 8" plate - amber – nice, scarce**
- ___ 16. Heavy Grape 8" plate - purple - super
- ___ 17. Heavy Grape 8" plate - marigold - pretty yellow irid.
- ___ **18. Question Mark Compote - purple - scarce & fantastic, what a super piece**
- ___ **19. Question Mark compote - marigold – scarce, pretty**
- ___ **20. Norris N. Smith adv. 6" plate - amethyst - rare adv. piece, super nice**
- ___ 21. Captive Rose ruffled compote - white - scarce color
- ___ 22. Captive Rose ruffled compote - green
- ___ 23. Captive Rose ruffled compote - marigold
- ___ **24. Wishbone & Spades 6" plate - purple - super pretty**
- ___ 25. Wishbone & Spades 6" plate - peach opal - scarce & nice
- ___ **26. Oriental Poppy tankard water pitcher - purple - super nice**
- ___ 27. Oriental Poppy tumblers (2) - purple - choice
- ___ **28. Pinecone 7" plate - amethyst - scarce size, nice**
- ___ 29. Pinecone 7" plate - blue - scarce
- ___ 30. Pinecone 7" plate - marigold - nice
- ___ **31. Captive Rose 9" plate - amethyst - scarce color, nice**
- ___ 32. Captive Rose 9" plate - green - scarce
- ___ 33. Captive Rose 9" plate - blue - very nice
- ___ 34. Beads & Flowers 6" plate - purple - nice
- ___ 35. Beads & Flowers 6" plate - peach opal
- ___ **36. Singing Birds whimsy creamer - marigold - made from the mug, this is an extremely rare whimsy that is super pretty & NEAT!**
- ___ **37. Singing Birds mug - ice blue - rare & nice**
- ___ 38. Singing Birds mug - white - very scarce, nice
- ___ 39. Singing Birds mug - blue - nice
- ___ 40. Singing Birds mug - purple
- ___ 41. Singing Birds mug - amethyst - pretty
- ___ 42. Singing Birds mug - lavender - scarce
- ___ 43. Singing Birds mugs (2) - marigold - choice
- ___ **44. N's Peacock at Urn master ice cream bowl - ice green - super pretty, highly desirable**
- ___ **45. N's Peacock at Urn master ice cream bowl - white – scarce & nice**
- ___ **46. N's Peacock at Urn master ice cream bowl - marigold - super pretty**
- ___ 47. Cherry Chain 6" plate – blue
- ___ 48. Cherry Chain 6" plate - marigold
- ___ **49. Hearts & Flowers ruffled compote - blue – scarce, nice**
- ___ **50. Hearts & Flowers ruffled compote - purple - scarce**
- ___ **51. Hearts & Flowers ruffled compote - aqua opal – scarce, nice**
- ___ 52. Hearts & Flowers ruffled compote - marigold - nice
- ___ 53. Hearts & Flowers ruffled compote - white - nice
- ___ **54. Miniature Candelabra - marigold - very hard to find mini**
- ___ 55. Miniature Chamber Stick - marigold - cute
- ___ **56. Shell & Sand 9" plate – purple - very rare & pretty**
- ___ 57. Stork & Rushes handled basket - marigold
- ___ **58. Manhattan Whiskey set w/Decanter, 4 shot glasses & under plate - marigold - extremely rare set, only a few pieces of this pattern known, minor nick on under plate**
- ___ **59. Holly goblet shaped compote - lime green opal - rare color and nice**
- ___ 60. Holly goblet shaped compote - aqua - nice
- ___ 61. Holly goblet shaped compote - lime green
- ___ 62. Holly goblet shaped compote - pink
- ___ **63. N's Town Pump - purple – very pretty example**
- ___ 64. Scroll Embossed ruffled compote - amber - super
- ___ 65. Blackberry Spray square shaped hat shape - red - nice
- ___ 66. Blackberry Spray square shaped hat shape - green - pretty
- ___ **67. Rose Show ruffled bowl - blue - scarce & pretty, a nice piece**
- ___ **68. Rose Show ruffled bowl - marigold - pink & yellow irid**
- ___ 69. Dugan Cherries 6" crimped edge plate - purple - nice
- ___ 70. Dugan Cherries 6" crimped edge plate - peach opal - nice
- ___ 71. Grape & Cable sweetmeat - purple - super
- ___ 72. Big Jessie covered Hen - marigold - marigold - 3 1/4" size
- ___ **73. Little Jessie covered Hen - marigold - cutie**
- ___ **74. Holly 9" plate - amethyst - very nice plate**
- ___ **75. Holly 9" plate - green - scarce color, nice**
- ___ 76. Holly 9" plate - blue - scarce
- ___ 77. Holly 9" plate - marigold - pretty
- ___ **78. Persian Garden 7" plate - white – scarce, nice**
- ___ 79. Persian Garden 6" plate - peach opal - pretty
- ___ 80. Persian Garden 6" plate - marigold
- ___ 81. Raspberry milk pitcher – green - nice
- ___ 82. Raspberry milk pitcher - marigold
- ___ **83. Blackberry Miniature compote - white - rare color, large chip on base**
- ___ 84. Blackberry miniature compote - green - scarce color, chip on base
- ___ 85. Blackberry miniature compote - amethyst - pretty
- ___ 86. Blackberry miniature compote - marigold - nice
- ___ 87. Blackberry miniature compote - blue
- ___ **88. E.A. Hudson Furniture Co. adv. handgrip plate - amethyst - very rare & nice**
- ___ 89. Optic & Button salt cup - marigold - has the Imperial Cross mark, neat mini
- ___ 90. Imperial Flute handled toothpick - marigold – cute
- ___ 91. Sweet Sixteen toothpick - marigold
- ___ **92. Wild Rose syrup - marigold – scarce, nice**
- ___ 93. Constellation ruffled compote - white
- ___ **94. Rose Show 9" plate - marigold - dark & pretty, highly desirable**
- ___ 95. Heavy Iris JIP hat shape - white - pretty & scarce
- ___ **96. Four Flowers 6" plate - purple - super pretty, rare**
- ___ 97. Four Flowers 6" plate - peach opal
- ___ **98. Peacocks 9" plate w/ribbed back - blue - scarce & desirable**
- ___ **99. Peacocks 9" plate w/ribbed back - purple - very pretty plate, scarce**
- ___ **100. Peacocks 9" plate w/ribbed back - white - scarce**

- ___ 101. Zippered Panel miniature butter dish - marigold - cute, I named the piece
- ___ **102. Butterfly & Fern water pitcher - green – pretty, scarce**
- ___ 103. Butterfly & Fern tumbler - green
- ___ **104. Corn bottle - smoke – very pretty & highly desirable**
- ___ 105. Corn bottle - marigold – nice
- ___ **106. N's Bushel basket - aqua opal - nice**
- ___ 107. N's Bushel basket - white
- ___ 108. N's Bushel basket - blue - super pretty, electric
- ___ 109. N's Bushel basket - lavender - nice
- ___ **110. Utah Liquor Co. adv. handgrip plate - amethyst - very nice example of this rare piece**
- ___ 111. Holly banana boat shaped compote - marigold – rare shape
- ___ **112. Fishscale & Beads 7" plate - purple - electric, fantastic**
- ___ 113. Fishscale & Beads 7" plate - marigold - pastel, w/lots of pinks
- ___ 114. Fishscale & Beads 7" plate - white - pretty
- ___ **115. Windmill milk pitcher - purple - very pretty, rare**
- ___ 116. Windmill milk pitcher - smoke - scarce, nick on top edge
- ___ 117. Windmill milk pitcher - marigold - dark
- ___ 118. Windmill milk pitcher – lime green - scarce color
- ___ **119. Isaac Benesch & Sons adv. ruffled bowl - amethyst - nice**
- ___ 120. Soda Gold salt & pepper shakers - smoke - rare
- ___ 121. Colonial mustard - marigold
- ___ 122. Drapery Variant shot glass - marigold - cute
- ___ **123. Horse Medallion 7" plate - blue - super scarce, nice**
- ___ 124. Horse Medallion 7" plate - marigold - nice
- ___ **125. Miniature Morning Glory 5" vase - purple - fantastic**
- ___ 126. Miniature Morning Glory 5" vase - smoke - nice
- ___ 127. Miniature Morning Glory 5" vase - green
- ___ 128. Miniature Morning Glory 5" vases (2) - marigold - one with odd top, choice
- ___ **129. Peacock & Grape ruffled bowl - marigold on moonstone - very rare & pretty**
- ___ **130. Peacock & Grape ruffled bowl - green - super, super**
- ___ 131. Octagon wine glass - blue – very, very rare
- ___ 132. Octagon cordial glass - marigold - scarce
- ___ 133. Octagon wine glass - marigold
- ___ **134. Fern Brand Chocolates adv. handgrip plate - amethyst - scarce & desirable**
- ___ 135. Blackberry Banded ruffled hat shape - white – scarce, nice
- ___ 136. Blackberry Banded ruffled hat shape - marigold on moonstone - very scarce, pretty
- ___ **137. 1911 Atlantic City Elks bell - blue - super rare, nice**
- ___ 138. Pansy ruffled pickle dish - smoke - pretty
- ___ **139. Lions 7" plate - marigold - very pretty example of this rare plate**
- ___ 140. Grape & Cable sweetmeat whimsey - purple
- ___ **141. Double Loop creamer - blue - very nice, rare**
- ___ 142. Double Loop chalice or open sugar - blue
- ___ **143. Illinois Soldiers & Sailors Home 7" plate - blue - super pretty example of this rare plate**
- ___ 144. Drapery 7" vase - marigold - dark & super
- ___ **145. Grape & Cable pin tray - ice blue - very rare, nice**
- ___ 146. Grape & Cable pin tray - green - scarce
- ___ 147. Grape & Cable pin tray - purple - nice
- ___ **148. 1910 Detroit Elks IC shaped bowl - amethyst – rare, nice**
- ___ **149. 1911 Atlantic City Elks IC shaped bowl - blue - also rare & very nice**
- ___ 150. Miniature butter dish - marigold - cute little size
- ___ 151. Napkin ring - marigold - neat
- ___ **152. N's Corn Vase w/plain base - marigold - dark & nice**
- ___ 153. Circle Scroll ruffled hat - marigold
- ___ **154. Fenton's Peacock at Urn 9" plate - blue - super pretty example**
- ___ 155. Acanthus milk pitcher - marigold - scarce
- ___ **156. Greek Key 9" plate w/BW back - marigold - scarce & highly desirable**
- ___ **157. Stork & Rushes mug - powder blue - very rare color for these**
- ___ **158. Stork & Rushes mug – amethyst - super pretty example**
- ___ 159. Vintage 7" plate - green - nice
- ___ 160. Vintage 7" plate – amethyst
- ___ **161. Holly ruffled compote - white - super pretty & very very rare, neat**
- ___ **162. Holly ruffled compote - red - scarce & desirable**
- ___ 163. Holly ruffled compote - pink
- ___ 164. Holly ruffled compote - green
- ___ 165. Holly ruffled compote - amethyst
- ___ 166. Holly ruffled compote - blue
- ___ **167. Three Row Open Edge ruffled bowl - ice blue - very scarce, pretty**
- ___ 168. Wine & Roses 5 pc. cider set - marigold - pitcher & 4 wines
- ___ 169. Heron mug - purple - pretty
- ___ 170. Miniature Shoes including: Boots(3), Ladies Slipper & High Healed Shoe - marigold - choice, scarce
- ___ 171. Large master Swan - marigold - looks like the Cambridge type Swan - damage to head
- ___ **172. Persian Medallion 6" plate - green - fantastic piece, rare**
- ___ 173. Persian Medallion 6" plate - lime green - scarce color
- ___ 174. Persian Medallion 6" plate - blue - very pretty
- ___ **175. Beaded Shell mug - white - very pretty, rare**
- ___ 176. Beaded Shell mug - marigold
- ___ 177. Captive Rose ruffled bowl - green
- ___ 178. Captive Rose ruffled bowl - marigold
- ___ **179. Stippled Grape & Cable 9" plate - purple - this has stippling from edge to edge, a rare variation, super pretty**
- ___ **180. Miniature Intaglio almond cup - marigold - neat mini**
- ___ 181. Peek-A-Boo toothpick - marigold - rare toothpick, McKee
- ___ **182. Four-Seventy-Four milk pitcher - lavender - super rare color**
- ___ 183. Four-Seventy-Four milk pitcher - green - scarce
- ___ 184. Four-Seventy-Four milk pitcher - marigold
- ___ **185. Seacoast pin tray - marigold - rare, has nick on back edge**
- ___ 186. Cosmos and Cane ruffled dome ftd compote - white - nice
- ___ **187. Pinecone saucer shaped 6" plate - amethyst - super, scarce**
- ___ 188. Pinecone saucer shaped 6" plate - green
- ___ 189. Pinecone saucer shaped 6" plate - blue - nice
- ___ 190. Pinecone 6" plate - marigold
- ___ 191. Good Luck 9" plate w/BW back - green – scarce, nice
- ___ 192. Fenton's Peacock at the Urn ruffled compote - lime green w/marigold overlay - nice
- ___ 193. Fenton's Peacock at the Urn ruffled compote - marigold
- ___ **194. Blackberry Spray ruffled hat shape - reverse amberina opal - rare & nice**
- ___ **195. Blackberry Spray ruffled hat shape - lime green opal - very scare color**
- ___ 196. Blackberry Spray ruffled hat shape - vaseline

- ___ 197. **Amaryllis flat plate - purple - fantastic irid. on this rare, rare piece**
- ___ 198. **Amaryllis round compote - marigold - pretty, cute**
- ___ 199. **Apple Blossom Twigs 9" plate w/smooth edge - peach opal - super, rare**
- ___ 200. Wild Berry powder jar - marigold - lid has minor nick on inside rim, at least it has a lid, rare
- ___ 201. Iris & Herringbone demitasse cup & saucer - lavender flash - scarce
- ___ 202. Leaf Tiers 4 pc. table set - marigold - nice set
- ___ 203. Honeycomb rose bowl - peach opal - pretty
- ___ 204. Fenton's Flute 9 1/2" vase - red - chip on top edge
- ___ 205. Fenton's Flute 9" vase - blue
- ___ 206. **Orange Tree standard size mug - red - nice**
- ___ 207. Orange Tree standard size mug - amber
- ___ 208. **Apple Tree water pitcher - marigold - super pretty!**
- ___ 209. Fruits & Flowers bonbon - blue - nice
- ___ 210. **Stippled Three Fruits 9" plate w/ribbed back - blue - has electric highlights**
- ___ 211. Stippled Three Fruits 9" plate w/ribbed back - purple - nice
- ___ 212. Stippled Three Fruits 9" plate w/ribbed back - marigold - nice
- ___ 213. **Coin Dot 8" plate - marigold - very rare plate**
- ___ 214. Little Barrel - smoke - pretty
- ___ 215. Miniature Intaglio basket - peach opal
- ___ 216. **Garden Mums handgrip plate - purple - nice for these**
- ___ 217. Heart & Vine ruffled bowl - green
- ___ 218. Leaf & Beads rose bowl - aqua opal - pastel & pretty
- ___ 219. Leaf & Beads rose bowl - blue - nice
- ___ 220. Little Flowers 6" plate - blue - scarce
- ___ 221. Little Flowers 6" plate - marigold - nice
- ___ 222. Diamond Lace water pitcher - lavender - neat color
- ___ 223. Diamond Lace tumbler - purple
- ___ 224. **N's Peacock at Urn IC sauce - blue - fantastic electric irid., some may consider this one a plate, the edges do not turn up!**
- ___ 225. **N's Peacock at Urn IC sauce - green - rare color, nice**
- ___ 226. N's Peacock at Urn IC sauce - ice green - minor pinhead on base
- ___ 227. N's Peacock at Urn IC sauce - ice blue - scarce
- ___ 228. N's Peacock at Urn IC sauce - white - nice
- ___ 229. N's Stippled Peacock at Urn IC sauce - blue
- ___ 230. N's Peacock at Urn IC sauce - purple
- ___ 231. N's Peacock at Urn IC sauce - marigold - pretty
- ___ 232. N's Stippled Peacock at Urn IC sauce - custard w/nutmeg stain - not carnival
- ___ 233. **Covered Frog - ice green - rare & desirable**
- ___ 234. Dragon & Lotus IC shaped bowl - marigold
- ___ 235. **M'burg Peacock 6" plate - amethyst - satin & scarce**
- ___ 236. **M'burg Peacock 6" plate - marigold - very rare color, tough plate**
- ___ 237. Fisherman's mug - purple - pretty
- ___ 238. Fisherman's mug - marigold - scarce
- ___ 239. Strawberry 9" plate w/BW back - amethyst - super pretty
- ___ 240. **Miniature Roller Skate shoe - marigold - rare**
- ___ 241. Brocaded Acorns 3" ftd tumbler - ice blue
- ___ 242. **Fenton's Butterfly ornament - blue - extremely rare & highly desirable**
- ___ 243. **Fenton's Butterfly ornament - marigold - also rare & highly desirable**
- ___ 244. Captive Rose card tray shaped bonbon - amethyst
- ___ 245. Captive Rose card tray shaped bonbon - blue
- ___ 246. Captive Rose card tray shaped bonbon - marigold
- ___ 247. **Grape & Cable candle lamp - green - very rare, nick on top edge of candlestick, shade is super nice**
- ___ 248. Bo Peep ABC child's dish - marigold
- ___ 249. Bo Peep mug - marigold
- ___ 250. **Rustic mid-size 16" vase - lime green w/marigold overlay - only one I've seen, very rare & nice**
- ___ 251. Persian Medallion ruffled compote - marigold
- ___ 252. **Grapevine Lattice 7" plate - purple - electric & super**
- ___ 253. Grapevine Lattice 7" plate - marigold
- ___ 254. **Dandelion mug - aqua opal - scarce, nice**
- ___ 255. Stippled Grape & Cable bonbon - purple - scarce stippled
- ___ 256. Miniature ftd salt dips (6) - marigold - choice
- ___ 257. **Formal hatpin holder - purple - scarce & very nice**
- ___ 258. Stag & Holly lg size IC shaped bowl - marigold - pretty
- ___ 259. Garden Path Variant 6" plate - peach opal - scarce
- ___ 260. Garden Path Variant 6" plate - white - pretty, scarce
- ___ 261. Fenton's Peacock at Urn IC shaped bowl - green - nice
- ___ 262. Inverted Feather wine - marigold - rare, rare, rare
- ___ 263. Estate cream & sugar - blue opal - rare
- ___ 264. **Brazier's Candies round adv. bowl - amethyst - super nice, a beauty**
- ___ 265. Star Medallion milk pitcher - smoke - pretty
- ___ 266. Star Medallion milk pitcher - marigold
- ___ 267. Star Medallion milk pitcher - clambrath
- ___ 268. **Twin Gators hatpin - dark - super pretty irid., RARE**
- ___ 269. Hatpins including: Flying Bat; Bee on Flower(cracked); Tufted Throw Pillow; Bars & Beads; Six Plums; Butterflies; Banded Criss Cross; Moiré Beetle; Basketflower; Rooster in ice blue - choice
- ___ 270. Stippled Fruits & Flowers 7" plate - marigold - scarce, pretty
- ___ 271. Pastel Swan salt - peach opal
- ___ 272. Pastel Swan salt - purple
- ___ 273. Pastel Swan salt - celest blue
- ___ 274. Pastel Swan salt - ice green
- ___ 275. Pastel Swan salts (2) - pink - choice
- ___ 276. Pastel Swan salt - red flash - feathers on neck
- ___ 277. Miniature Duck - marigold
- ___ 278. **Open Rose 9" plate - purple - super pretty, rare**
- ___ 279. M'burg Boutonniere ruffled compote - amethyst
- ___ 280. **Parlor Panels 4" squatty vase - smoke - super pretty, extremely rare, neat vase**
- ___ 281. Imperial Grape 6" plate - purple - pretty
- ___ 282. Imperial Grape 6" plate - amber - also pretty
- ___ 283. Imperial Grape 6" plate - marigold
- ___ 284. **Stippled Three Fruits spt ftd ruffled bowl - aqua opal - super pretty, a dandy**
- ___ 285. Flute toothpicks (2) - purple - choice
- ___ 286. Flute toothpick - marigold - nice
- ___ 287. Flute toothpick - green
- ___ 288. Ribbed Panels ruffled mustard in metal frame - marigold
- ___ 289. **Two Flowers 9" spt ftd plate - marigold - super nice, scarce**
- ___ 290. Collection of Cordials including: Zipper Stitch, Forty Niner, Star & File, Regal Cane, Flute & Cane, O'Hara, Star & Fan, Rose Band, 2 unknown - all marigold - choice
- ___ 291. Forty-Niner ring tree - marigold
- ___ 292. Fruits & Flowers 8" handgrip plate - purple - super pretty
- ___ 293. Captive Rose crimped edge compote - amethyst
- ___ 294. Captive Rose crimped edge compote - blue

- ___ 295. **M'burg Multi Fruits & Flowers sherbet - green - rare & super, neat piece**
- ___ 296. Petal & Fan 6" crimped edge plate - purple - pretty
- ___ 297. Petal & Fan 6" crimped edge plate - peach opal - scarce
- ___ 298. All Green tumblers: Greek Key; Dandelion; Singing Birds - choice
- ___ 299. **Inverted Strawberry spittoon - marigold - scarce & nice**
- ___ 300. Target 10" vases (2) - purple - have electric highlights, choice
- ___ 301. Blackberry Spray JIP CRE hat shape - amberina - super pretty
- ___ 302. Beaded Cable rose bowl - white - nice, scarce
- ___ 303. Beaded Cable rose bowl - aqua opal - minor polished spot on edge
- ___ 304. Marigold toothpicks (5 different) - choice
- ___ 305. **Tornado small size vase - green - scarce & nice**
- ___ 306. Captive Rose CRE bowl - amethyst
- ___ 307. **Orange Tree powder jar - amethyst - rare, rare color, minor nick on underside of lid**
- ___ 308. Luster Rose fruit bowl - marigold
- ___ 309. Imperial Grape wine bottle - purple - fantastic
- ___ 310. Imperial Grape wines (2) - purple - choice
- ___ 311. **Daisy Cut bell - marigold - scarce**
- ___ 312. Daisy Web ruffled hat shape - marigold - scarce hat shape
- ___ 313. Round Up 9" plate - peach opal - pretty
- ___ 314. Butterfly & Berry 9" vase - black amethyst - minor pinpoint on top edge
- ___ 315. Butterfly & Berry 10" vase - green - rare color
- ___ 316. Butterfly & Berry 9" vase - blue
- ___ 317. **M'burg Courthouse IC shaped bowl - amethyst - radium, rare bowl**
- ___ 318. Double Dutch ftd round bowl - marigold
- ___ 319. Leaf Chain 7" plate - white - pretty & scarce
- ___ 320. Hobstar & Fruit 5" ruffled bowl - blue opal - scarce
- ___ 321. Rose Spray JIP compote - white
- ___ 322. **Paneled Dandelion tankard water pitcher - amethyst - super pretty**
- ___ 323. Scales 7" crimped edge plate - peach opal
- ___ 324. Poinsettia milk pitcher - green - scarce color
- ___ 325. Poinsettia milk pitcher - smoke - nice
- ___ 326. Poinsettia milk pitcher - marigold
- ___ 327. Wishbone ftd ruffled bowl - purple
- ___ 328. Miniature Witch's Pot, Sov. Of Wytopitlock, ME - marigold
- ___ 329. Miniature Bucket - marigold
- ___ 330. Trophy Miniature Loving Cup - marigold
- ___ 331. Marigold shot glasses including Jacobean Ranger & Heavy vine (11) - choice
- ___ 332. **Peacocks ruffled bowl w/ribbed back - purple**
- ___ 333. Fine Rib 9" vase - lime green w/marigold overlay
- ___ 334. **Persian Medallion 7" plate - green - very, very rare**
- ___ 335. **Little Beads ftd 5" whimsey plate - amethyst - rare**
- ___ 336. Grape & Cable hatpin holder - purple
- ___ 337. Grape & Cable hatpin holder - marigold - nice
- ___ 338. Persian Medallion card tray shaped bonbon - lime green
- ___ 339. **Geo. W. Getts adv. 6" plate - amethyst - very rare plate plus nice**
- ___ 340. Holly crimped edge ruffled compote - marigold - scarce shape
- ___ 341. **Poppy Show 9" plate - marigold - dark & super, a real beauty**
- ___ 342. Blue Tumblers including: N's Peacock at the Fountain, Butterfly & Berry, & Lattice & Grape (2) - choice
- ___ 343. **Blackberry miniature plate - blue - very rare mini, nice**
- ___ 344. Covered Hen on Nest - blue
- ___ 345. Wild Strawberry 7" handgrip plate - marigold - pretty
- ___ 346. **Scroll Embossed goblet shaped whimsey compote - green - only one I have seen**
- ___ 347. Peacock & Grape IC shaped bowl - marigold - pretty
- ___ 348. Grape & Cable 8" plate - purple - nice
- ___ 349. **Concord 3 in 1 edge bowl - amethyst - very nice**
- ___ 350. Miniature Hat - blue - neat little piece
- ___ 351. Rose Sprig miniature loving cup - marigold - scarce
- ___ 352. Miniature Coal Bucket - green - very rare color for this mini
- ___ 353. Serpentine Rose & Miniature Grape creamers - marigold - choice
- ___ 354. **Peacock & Grape 9" plate - marigold - dark, nice**
- ___ 355. Daisy & Plume rose bowl - marigold - nice
- ___ 356. **Fruits & Flowers 7" plate - purple - very pretty, scarce**
- ___ 357. Pineapple open sugar - marigold
- ___ 358. Grape & Cable perfume - purple - pretty
- ___ 359. Strawberry bonbon w/strawberry center - blue - scarce
- ___ 360. Peacock Tail 6" plate - marigold - pretty & scarce
- ___ 361. Woodlands 5" vase - marigold - scarce
- ___ 362. Marigold Mugs including: Vintage Banded (2), Stippled Robin & Estate - choice
- ___ 363. Open Rose 9" ruffled bowl - purple - pretty
- ___ 364. **M'burg Leaf & Little Flowers sherbet shaped compote - green - radium, nice**
- ___ 365. **M'burg Leaf & Little Flowers ruffled compote - amethyst - radium, nice**
- ___ 366. **M'burg Leaf & Little Flowers ruffled compote - marigold - radium, nice**
- ___ 367. Tulip & Cane water goblet, claret, & wine glasses(2) - marigold - choice
- ___ 368. Cherry Circles card tray shaped bonbon - marigold
- ___ 369. **Heavy Grape 6" plate - marigold - super rare plate, made from a berry bowl?**
- ___ 370. Zippered Heart ruffled sauce - purple
- ___ 371. Scroll Embossed 4" round bowl - marigold - cute
- ___ 372. **Scroll Embossed miniature ruffled compote - amethyst - super pretty, scarce**
- ___ 373. Fenton's Peacock at Urn goblet shaped compote - marigold - dark
- ___ 374. Peacock Tail w/Delmar Gardens adv. ruffled hat shape - green
- ___ 375. Corinth JIP 9" vase - blue opal - nice, scarce
- ___ 376. Ripple 4 1/2" vase - marigold - some call this the mini vase
- ___ 377. Leaf Rays nappy - white
- ___ 378. **Peacock and Dahlia 7" plate - marigold - super pretty, rare**
- ___ 379. Amethyst Tumblers including: Paneled Dandelion(2), Heavy Iris(2), Lattice & Daisy - choice
- ___ 380. **Stippled Strawberry PCE bowl w/ribbed back - marigold - very pretty, scarce**
- ___ 381. Ski Star crimped edge 6" plate - peach opal - nice
- ___ 382. **Grape Arbor ruffled hat shape - ice green - very scarce, made from tumbler**
- ___ 383. Scales 6" plate - green - nice
- ___ 384. **Peacock at the Fountain ruffled compote - marigold - super pretty, pumpkin irid.**
- ___ 385. Acorn ruffled bowl - lime green
- ___ 386. Drapery rose bowl - blue - scarce color, chip on edge
- ___ 387. Scroll Embossed ruffled compote - marigold - File back

- ___ 388. **Orange Tree 9" plate - blue - very nice & scarce**
 ___ 389. Panther ftd ruffled sauce - marigold
 ___ 390. M'burg Peacock at Urn IC sauce w/beads on Urn - amethyst - very scarce
 ___ 391. Miniatures including Canoe, Bull Dog, Pipe, Heavy Vine Pin tray - marigold - choice
 ___ 392. **Harvest Poppy ruffled compote - marigold - super, scarce**
 ___ 393. **Buzz Saw small size cruet - green - scarce, very nice**
 ___ 394. Marigold Tumblers including: Grape Arbor(2), Tiger Lily, Windmill, Singing Birds, Feather & Heart, Crab Claw, Raspberry, Four-Seventy-Four, Lattice & Daisy, White Oak, Enameled N's - choice
 ___ 395. Star Medallion celery vase - clambroth
 ___ 396. Grape & Cable shot glass - marigold - dark
 ___ 397. Pepper Plant ruffled hat shape - green
 ___ 398. Pony ruffled bowl - marigold
 ___ 399. **Exchange Bank adv. ruffled bowl - amethyst - very rare & desirable**
 ___ 400. Curved Star finger bowl & under plate - marigold
 ___ 401. **Three Fruits dome ftd ruffled bowl - white - very pretty, scarce**
 ___ 402. Flute & Cane milk pitcher, creamer and sugar - marigold - sold as set
 ___ 403. Frosted Block 8" plate - smoke
 ___ 404. **M'burg Sunflower pin tray - marigold - very rare & highly desirable**
 ___ 405. Grape & Cable 6" plate - amethyst
 ___ 406. Vintage 6" plate - marigold - rare item
 ___ 407. Smooth Rays 6" plate - purple - pretty
 ___ 408. Estate sugar - marigold - dark
 ___ 409. **Stippled Peacocks 9" plate w/ribbed back - blue - very pretty, highly desirable**
 ___ 410. **Stippled Peacocks 9" plate w/ribbed back - marigold - very nice, scarce**
 ___ 411. Small ftd Shell - amethyst
 ___ 412. Wreath of Roses rose bowl - marigold
 ___ 413. 1911 Atlantic City Elks 7" plate - blue - chip on edge, scarce
 ___ 414. Orange Tree wine goblet - blue
 ___ 415. Orange Tree wine goblet - marigold
 ___ 416. **Orange Tree w/trunk IC shaped bowl - green - fantastic! beautiful!**
 ___ 417. Orange Tree ruffled compote - marigold
 ___ 418. Little Beads ftd compote - aqua - very rare color
 ___ 419. Persian Garden 7" plate - white - nice
 ___ 420. All Purple tumblers including: Heavy Iris, Acorn Burrs, Peacock at the Fountain, Grape & Cable, Oriental Poppy - choice
 ___ 421. Curved Star 4" round bowl - marigold - cute miniature
 ___ 422. **Eagle Furniture Co. adv. 6" plate - purple - very rare & highly desirable**
 ___ 423. Rising Sun & Banded Beads and Bars juice glasses - marigold - choice
 ___ 424. Golden Wedding nip bottles (3) & miniature Canada Dry bottle - marigold - one nip bottle in box, choice
 ___ 425. **Daisy Webb JIP CRE hat shape - purple - unbelievable!**
 ___ 426. Collection of marigold wines (16) - choice
 ___ 427. **Little Jewel miniature finger lamp - marigold - rare & desirable**
 ___ 428. **Miniature Cow figurine - marigold - rare miniature, neat**
 ___ 429. Stippled Singing Birds mugs (2) - marigold - choice
 ___ 430. Stippled Singing Birds mug - custard glass, not carnival
 ___ 431. Golden Wedding bottles, several different sizes from pint to 4 pint - choice
 ___ 432. Brocaded Acorns hdd 7" plate - ice blue
 ___ 433. **Blackberry Open Edge 8" plate - white - extremely rare, very few known, pretty**
 ___ 434. **Blackberry Open Edge 7" plate - marigold - rare & very pretty**
 ___ 435. Shriner pcs. including shot glasses & champagnes - non-carnival - choice
 ___ 436. Collection of miniatures - choice
 ___ 437. Collection of bottles - marigold
 ___ 438. Collection of small plates - marigold
 ___ 439. Cups & Saucers, Sherbets & Under plates - sold as sets - choice
 ___ 440. Collection of figural bottles including Inca - choice
 ___ 441. Misc. lot of old Carnival pcs. - choice
 ___ 442. Collection of bottles - choice
 ___ 443. Misc. lot of old Carnival pcs. - choice
 ___ 444. Misc. lot of damage pcs. of Carnival glass - choice
 ___ 445. HOACGA Room Display Hobnail Spittoons (15) - choice
 ___ 446. Frolicking Bears Spittoon - vaseline opal; Seacoast Spittoon - red, green, peach opal & vaseline opal; Inverted Strawberry Spittoon - red - all Club Commem., choice
 ___ 447. Misc. lot of Club Commemoratives & Table favors (36) - choice
 ___ 448. HOACGA table favor mugs (5) - choice
 ___ 449. Misc. lot of Contemporary Carnival Glass - choice
 ___ 450. Misc. lot of glass pcs. - choice



268

Seeck Auctions

P.O. Box 377
Mason City, Iowa 50402

PRESORTED
FIRST-CLASS MAIL
U.S. POSTAGE PAID
MINNEAPOLIS, MN
PERMIT NO. 28534

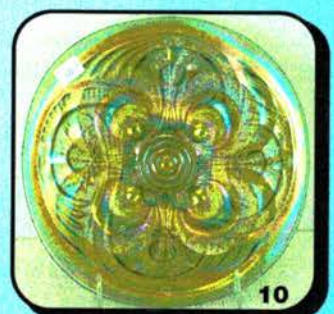
T4 P1 *****AUTO**MIXED AADC 553
Lee Markley
PO Box 306
Mentone, IN 46539-0306



172 233



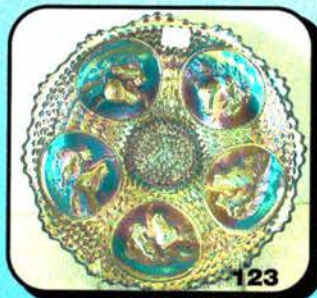
115 257



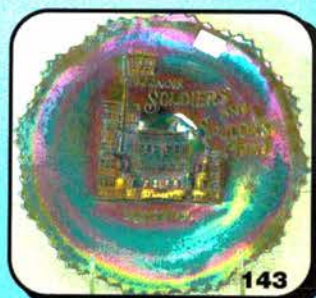
10



67



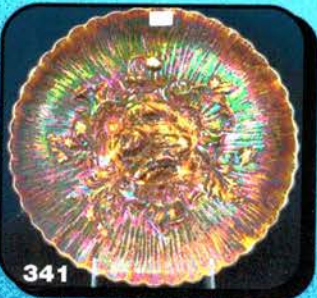
123



143



278

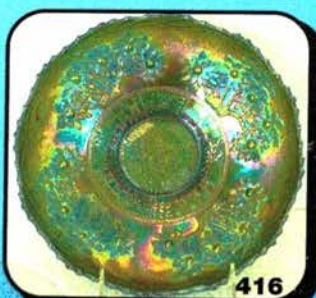


341

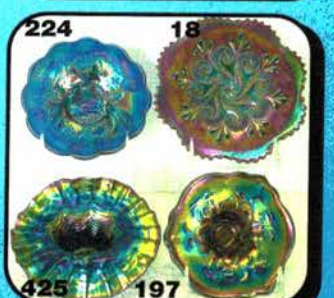


112 125

141 343



416



224 18

425 197