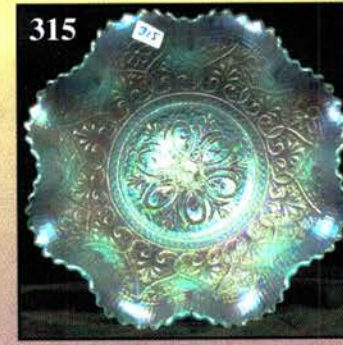
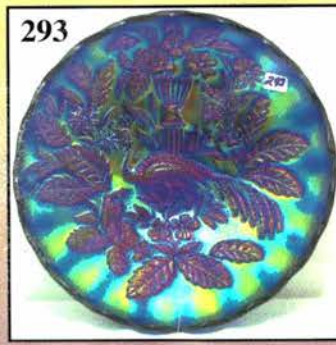
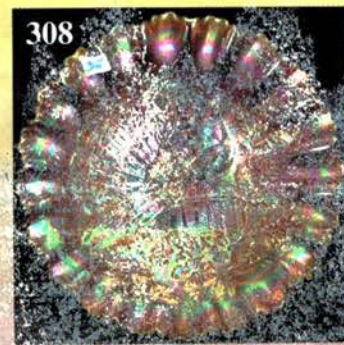
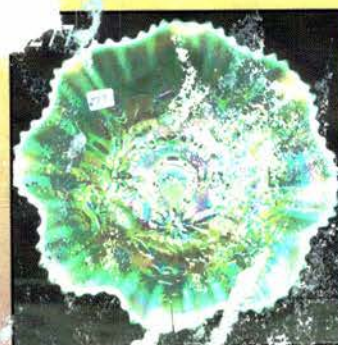
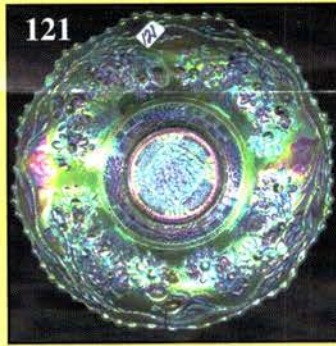
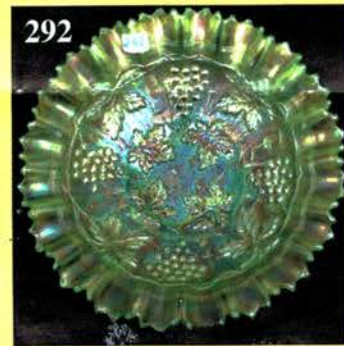
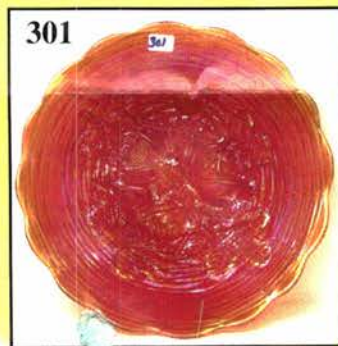
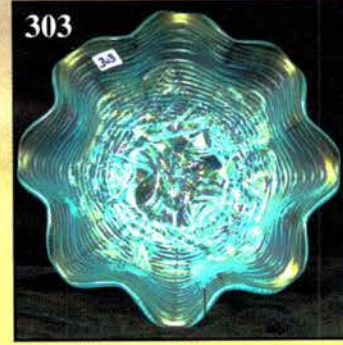
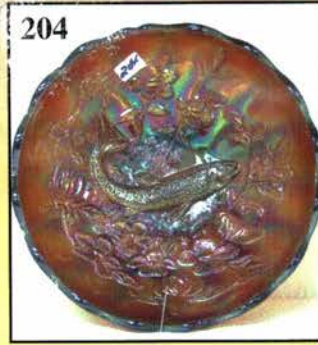
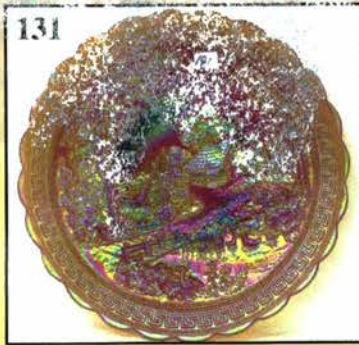
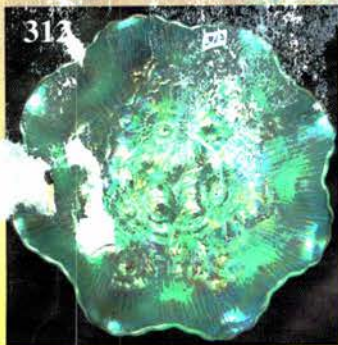


CARNIVAL GLASS AUCTION

Saturday, October 13, 2007 9:00 a.m.

Friday Preview: October 12 - 12 noon-5 pm & 7:30 am Auction Day

FANTASTIC! Diversified Collection of
Dave and Reva Drabling



Held By the Mickey Reichel Antique & Auction L.C.

Office: 660-882-5292 • Home: 660-882-5283

NEW WEB SITE: www.AWK-SHN.com

E-mail: mreichel@AWK-SHN.com

Held Inside the Mickey Reichel Auction Center

1 Mile North of I-70 on Hwy. 5, Exit 101, Boonville, Missouri • 20 Miles West of Columbia, MO on I-70



Preview Friday 12 p.m. - 5 p.m. and 7:30 a.m. - 9:00 a.m. Day of Auction

TERMS: Cash or Good Check, VISA and MasterCard accepted.



4% Clerking Fee on all purchases except for payment of cash or check. Proper I.D. required.

WEB SITE: www.AWK-SHN.com

ABSENTEE BID POLICY:

WRITE IN BIDS: If you are unable to attend the auction, we will be happy to accept absentee bids which must be received by THURSDAY, OCTOBER 11, 2007. Don't Delay. **E-Mail: mreichel@AWK.SHN.com** ← ← ← ←

DIRECT ALL MAIL TO: 18350 Hunters Ridge Ct., Boonville, MO 65233-2971

PLEASE NOTE: There is a **\$5 handling charge for each successful bid which will be added to the selling price** for all write-in bids. This is in addition to the cost of postage, insurance and packing. Your write-in bid will be entered just as if you are present and bidding. **Successful bidders will be notified in 1 to 3 days by the auctioneer (so be sure to include your phone number).** Direct mail bids to Auctioneer Mickey Reichel, 18350 Hunters Ridge Ct., Boonville, MO 65233-2971. Terms: Cash or Check accepted with proper I.D. and Social Security Number and References. Announcements made day of the auction supercede all printed material. Not Responsible for Accidents or Sold Items. (Phone bids welcome **Before Auction Begins.**)

No return on any items once they leave the Auction Center (No Exceptions).****

Call for additional information: 660-882-5292 days or 660-882-5283 evenings before 9:00 p.m.


FAX: 660-882-5292 (evening hours start FAX transmission after beep)

MAIL BIDS: Items are bid on in perfect condition with average or above iridescence OR as listed in the brochures. Bids will not be carried out when damage on an item has been found during the auction.

PEOPLE PRESENT AT AUCTION ARE RESPONSIBLE FOR FINDING ANY PINHEADS, WEAR, SPOTTINESS, MANUFACTURER'S DEFECTS OR ANY OTHER MINOR FLAWS, ETC. *****

NOTE: Read each line, as we have accentuated the type of no particular piece, all are special.

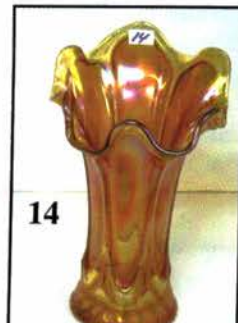
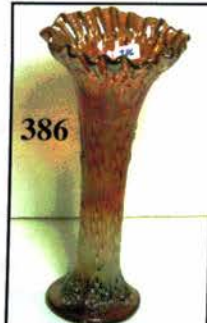
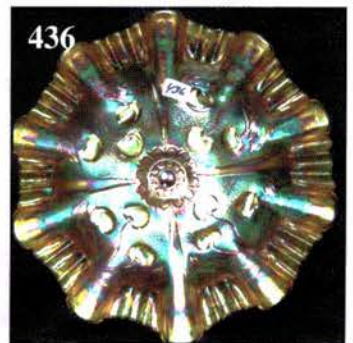
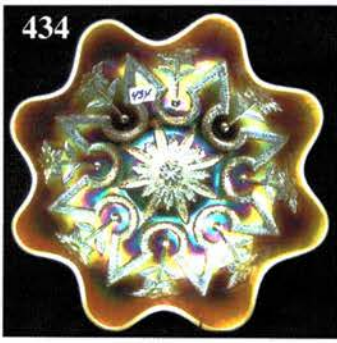
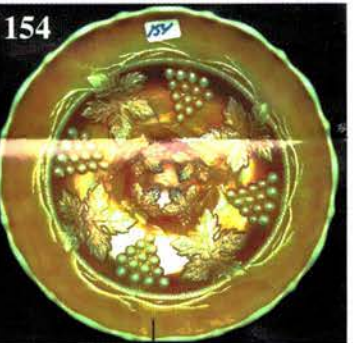
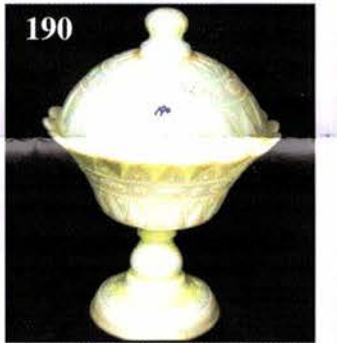
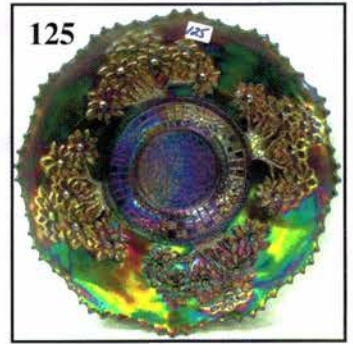
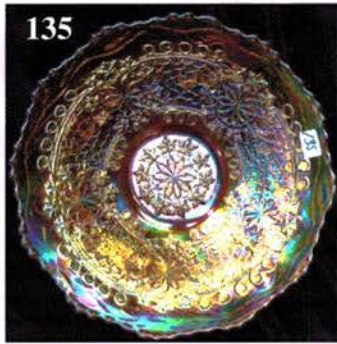
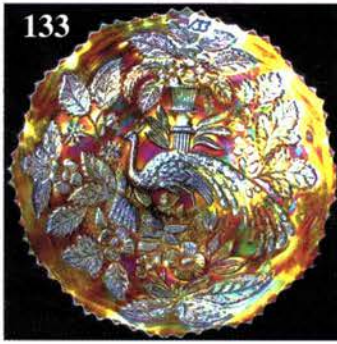
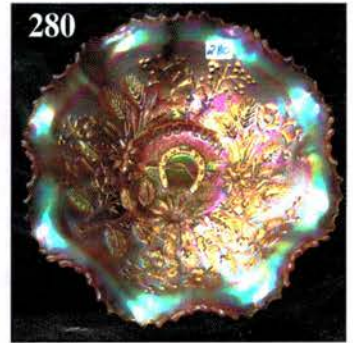
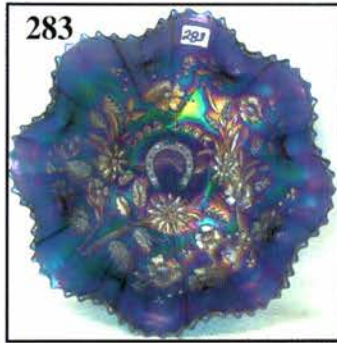
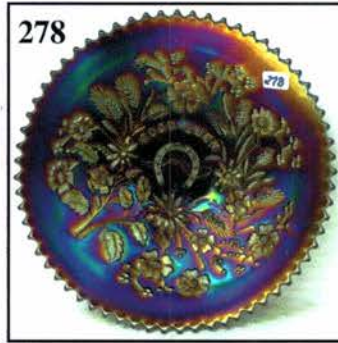
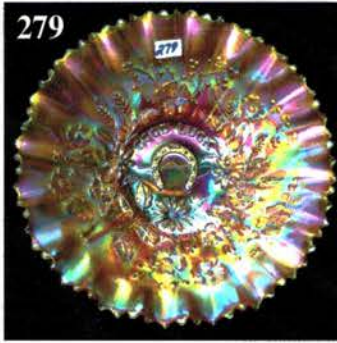
Make Reservations EARLY at one of these local motels:

Mention: Mickey Reichel Auction when calling the  Isle of Capri Casino Hotel: 660-882-1200
Days Inn: 660-882-8624 • Comfort Inn: 660-882-5317 • Super 8: 660-882-2900 • Holiday Inn: 660-882-6882

Auction Consists of Rarity, Great Irid. and Variety

- | | |
|---|---|
| _____ 1. M - 5" Ripple Vase, 2-1/2" Base, 3-3/4" Opening | _____ 14. M - 8" Parlor Panels Vase, 6" Opening - Pumpkin |
| _____ 2. G - 7-3/4" Ripple Vase, 2-1/2" Base | _____ 15. Smoke - 11-1/2" Smooth Panels Vase - A Beauty |
| _____ 3. G - 9" Ripple Vase, 3-3/8" Base, 5" Top | _____ 16. Dk. M - 4" Rococo Vase |
| _____ 4. G - 11-3/4" Ripple Vase, 3-3/8" Base, 4-1/2" Top | _____ 17. Beautiful Smoke - 4-1/2" Rococo Vase |
| _____ 5. M - 15-3/4" Ripple Vase, 3-7/8" Base, 6" Top | _____ 18. G - 5" Morning Glory Vase, 3-1/2" Top - Nice |
| _____ 6. Amber - 10-1/2" Ripple Vase, 2-7/8" Base (Choice A or B) | _____ 19. Smoke - 7-1/2" Morning Glory Bud Vase |
| _____ 7. Smoke - 12-1/2" Ripple Vase, 3-3/8" Base, 5-1/4" Top | _____ 20. Elec. P - 6" Morning Glory Vase |
| _____ 8. Radium P - 8-1/4" Ripple Vase, 3-3/8" Base, 6-1/2" Opening | _____ 21. Elec. P - 7-1/2" Morning Glory Bud Vase |
| _____ 9. Radium P - 8" Ripple Vase, 3-3/8" Base, 6" Opening | _____ 22. Pastel Smoke - 5" Smooth Panels Neat Vase |
| _____ 10. Radium M - 11-1/2" Imp. Beaded Bulls Eye Vase | _____ 23. W - Opaque 6-3/4" Smooth Panels Vase - Pearl Finish |
| _____ 11. Scarce Amber - Imp. 12" Beaded Bulls Eye Vase | _____ 24. MMG - 4-3/4" Smooth Panels Vase, 5" Top - Super Color |
| _____ 12. Scarce Amber - Imp. 11-3/8" Freefold Vase | _____ 25. Radium M - 5-3/4" Thin Rib/Drape Vase |
| _____ 13. M - Imp. 9-1/2" Curled Rib Vase | _____ 26. W Stretch - 4" Smooth Panel Vase, 4-3/4" Opening |

- _____ 27. Dk. M - Imp. File Tumbler
 _____ 28. **Scarce M - Leaf Tier Tumbler**
 _____ 29. Dk. B - Rambler Rose Tumbler
 _____ 30. **P - Rambler Rose Tumbler**
 _____ 31. Rich M - Circle Scroll Tumbler
 _____ 32. **Rare B - God and Home Tumbler**
 _____ 33. Scarce M - Jewelled Heart Tumbler
 _____ 34. **Beautiful P - Heavy Iris Tumbler**
 _____ 35. W - Heavy Iris Tumbler w/Blue Irid.
 _____ 36. **P - Dugan Peacock/Fountain Tumbler**
 _____ 37. B - Beaded Stork/Rushes
 _____ 38. **Beautiful M - Quill Tumbler - Base Chip**
 _____ 39. P - Beaded Shell Tumbler
 _____ 40. **W - Dahlia Tumbler - Red Flowers**
 _____ 41. M - Wreath Cherry Tumbler
 _____ 42. **Blk A - Wreath Cherry Tumbler - A Beauty**
 _____ 43. Violet - Fluffy Peacock Tumbler w/Base Nick
 _____ 44. **Radium A - Fluffy Peacock Tumbler**
 _____ 45. M - Fluffy Peacock Tumbler
 _____ 46. **Yellow Amber - Omnibus Tumbler - Scarce**
 _____ 47. M - Omnibus Tumbler
 _____ 48. **M - Rising Sun Tumbler**
 _____ 49. M - Cut Cosmos Tumbler - Very Desirable
 _____ 50. **Extremely Rare G - Mlbg. Morning Glory Tumbler**
 _____ 51. G - Mlbg. Hanging Cherries Tumbler
 _____ 52. **Dk. G - Mlbg. Hanging Cherries Tumbler**
 _____ 53. A - Mlbg. Feathered Heart Tumbler
 _____ 54. **M - Mlbg. Feathered Heart Tumbler**
 _____ 55. M - Mlbg. Diamonds Tumbler
 _____ 56. **G - Mlbg. Diamonds Tumbler**
 _____ 57. Rich M - Blueberry Tumbler
 _____ 58. **Frosty W - Blueberry Tumbler**
 _____ 59. M - Cosmos/Cane Tumbler
 _____ 60. **Rare W - Oak Tumbler**
 _____ 61. Rich M - Gothic/Grape Tumbler
 _____ 62. **Pretty G - Gothic/Grape Tumbler**
 _____ 63. Beautiful B - Gothic/Grape Tumbler
 _____ 64. **Radium G - Singing Birds Tumbler - NEAT**
 _____ 65. G - Singing Birds Tumbler w/M Overlay - Unusual
 _____ 66. **M - Singing Birds Tumbler**
 _____ 67. Scarce G - Springtime Tumbler
 _____ 68. **Rich M - Springtime Tumbler**
 _____ 69. M - Wishbone Tumbler - Greatly Desired
 _____ 70. **M - Greek Key Tumbler - Super**
 _____ 71. M - Fashion 7 pc. Water Set
 _____ 72. **M - #474 Water Pitcher**
 _____ 72A. **M - #474 Tumbler**
 _____ 73. Radium M - Hobstar/Shield Water Pitcher
 _____ 73A. Radium M - Hobstar/Shield Tumbler
 _____ 74. **M - Crabclaw Water Pitcher w/4 Tumblers**
 _____ 75. Enameled M - Magnolia/Drape Water Pitcher
 _____ 76. **Elec. P - Diamond/Lace Water Pitcher**
 _____ 77. Elec. P - Diamond/Lace Tumbler
 _____ 78. **Blue - Enameled Ground Cherries 7 pc. Water Set**
 _____ 79. M - Omnibus Water Pitcher - Few Known
 _____ 80. **Rare Amber - 7-1/2" Tiger Lily Pitcher (1 Reported)**
 _____ 81. Rare Amber - Imp. Windmill Pitcher
 _____ 82. **Also Rare Amber - Imp. Field Flowers Water Pitcher**
 _____ 83. Rare Vaseline - Imp. Waterlily Water Pitcher - Radium
 _____ 84. **M Flashed - Puntty Band Heisey #1220 Pitcher w/2 Tumblers - Enameled in German "Greeting of Friends" - Enamel is Hot**
 _____ 85. Orange Color - Western Thistle Water Pitcher - Marie Chipped
 _____ 86. **Scarce W - Enameled Shasta Daisy Banded Water Pitcher - A Dandy**
 _____ 87. Radium Elec. M - Plume Panel & Bows Water Pitcher
 _____ 88. **M - Floral/Grape Water Pitcher**
 _____ 89. Radium M - Diamond Cut Shields Water Pitcher
 _____ 90. **Stretch Topaz Vaseline - Blue Handled, 8 pc., Lemonade Set - Rare (Especially With Lid!)**
 _____ 91. P - Mlbg. Diamonds Water Pitcher
 _____ 92. **M - Mlbg. Diamonds Water Pitcher**
 _____ 93. M - Imp. 5-3/4" Scarce Flute/Cane Pitcher
 _____ 94. **M - Illinois Daisy Biscuit Jar**
 _____ 95. Pretty M - Fashion Punch Bowl/Base & 6 Cups
 _____ 96. **Scarce G - Small Size N Grape/Cable Punch Bowl w/Base - Interior Crack**
 _____ 97. G - Grape/Cable Punch Cups - 4 x \$
 _____ 98. **M - Round Broken Arches Punch Bowl/Base - Neat Pattern**
 _____ 99. Contemporary M - Lge. Whirling Star Elec. Lamp from Punch Bowl and Base
 _____ 100. **Extremely Rare M - Crucifix Candlesticks**
 _____ 101. M - Fenton Florentine Candlesticks - 10-1/2" Tall
 _____ 102. **Saph. - N Colonial, 10-1/2" Candlesticks**
 _____ 103. Red - 8-3/4" Fenton Florentine Candlestick (1 only)
 _____ 104. **Russet - N 8-1/2" Colonial Candlesticks**
 _____ 105. Blue Jade - 8-1/2" N 6 Sided #657 Candlesticks
 _____ 106. **Ivory - 8-1/2" N 6 Sided #657 Candlesticks**
 _____ 107. Vaseline - 8-1/2" N 6 Sided #657 Candlesticks
 _____ 108. **Russet - 8-1/2" N 6 Sided #657 Candlesticks**
 _____ 109. Smoke - Imp. Delta Base #419 Candlesticks
 _____ 110. **Rare Red - Imp. Chesterfield Candlesticks**
 _____ 111. Topaz Stretch Vaseline - #131 U.S. Glass Co. Candlesticks
 _____ 112. **W Stretch - #151 U.S. Glass Co. Candlesticks**
 _____ 113. Stretch Celeste B - #151 U.S. Glass Co. Candlesticks
 _____ 114. **Fantastic IG Stretch - Dugan Diamond Column Candlesticks**
 _____ 115. Celeste B - Dugan Diamond Column Candlesticks
 _____ 116. **Saph. w/Black Base - Fenton #649 Spindle Candlesticks - Really Neat**
 _____ 117. G - Inverted Feather Cracker Jar w/Lid
 _____ 118. **M - 7" European Cologne Bottle w/Stopper - Unusual**
 _____ 119. M - 3/1 Edge Fenton Ribbon Tie Bowl
 _____ 120. **B - Orange Tree Powder Jar w/Lid**
 _____ 121. Outstanding W - 9-1/4" Orange Tree Plate w/Trunk Center
 _____ 122. **Rare G - Orange Tree or Fenton Flowers Nut Bowl**
 _____ 123. M - 9-1/2" Orange Tree Plate - Fantastic
 _____ 124. **M - 8-1/4 ICS Dk. Orange Tree Bowl**
 _____ 125. B - 9-1/2" Orange Tree Plate - Multi-Elec.
 _____ 126. **W - 9-1/2" Fenton Holly Plate**
 _____ 127. Red - 9" Ruffled Fenton Holly Bowl - Rim Flaw

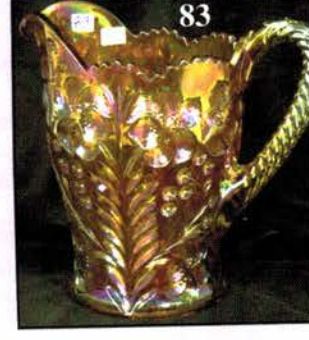
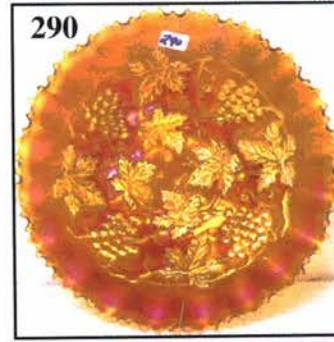
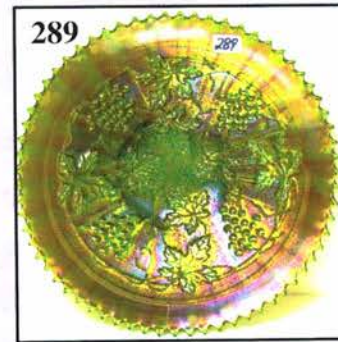
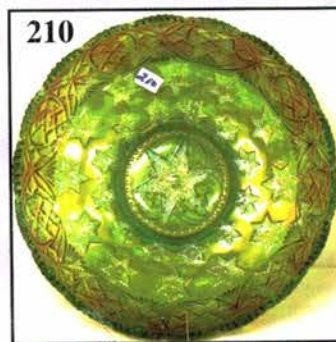
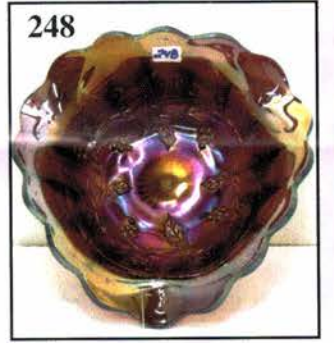
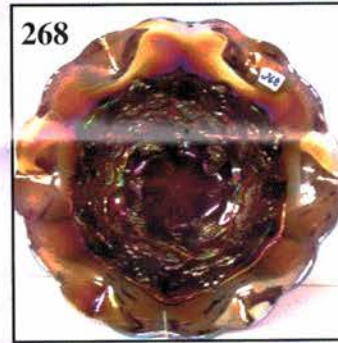
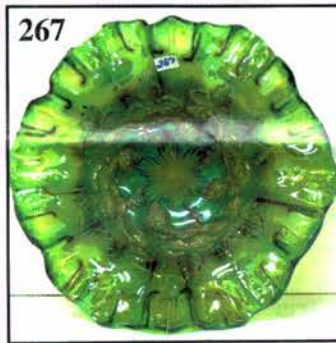
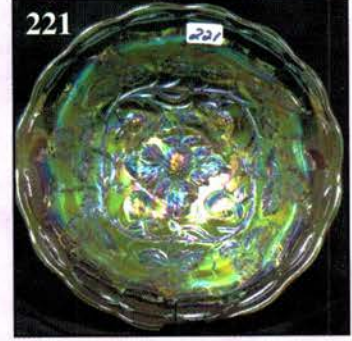
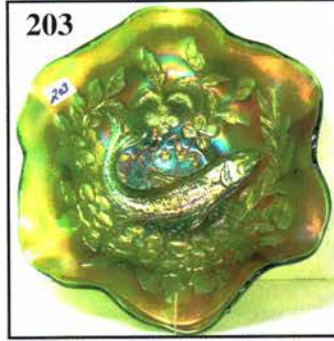
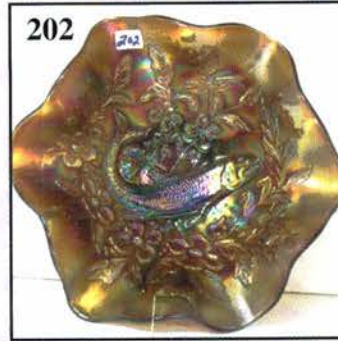
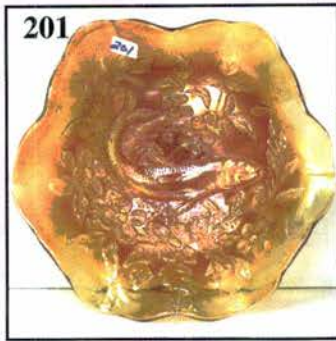
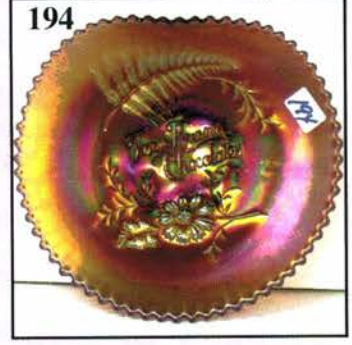


128. **Pretty M - 9-3/4" Ruffled Fenton Holly Plate**
 129. G - 9" Fenton Ruffled Holly Bowl - Scarce
130. **Soft M - 9" Ruffled Fenton Peacock/Urn Bowl**
 131. Scarce B - ICS Fenton Peacock/Urn Bowl
132. **Beautiful Dk. M - Ruffled Fenton Peacock/Urn Bowl**
 133. M - 9-1/2" Fenton Peacock/Urn Plate
134. **B - 9-1/2" Fenton Peacock/Urn Plate - Old Favorite**
 135. Pastel M - 9" Leaf Chain Plate - Very Desirable
136. **M - 9" Ruffled Chrysanthemum and Windmills Bowl**
 137. G - 8-1/2", 6 Ruffle Captive Rose Bowl - Pretty
138. **Dk. M - 8-1/2", 6 Ruffle Captive Rose Bowl**
 139. B - 8-1/2", 6 Ruffle Captive Rose Bowl
140. **Scarce A - 8-1/2", 6 Ruffle Captive Rose Bowl**
 141. Radium B - 8-3/4" Ruffled Dragon/Lotus Bowl - Unusual Finish
142. **Scarce A - 8-3/4" Ruffled Dragon/Lotus Bowl**
 143. G - 8-3/4", 3/1 Edge Dragon/Lotus Bowl
144. **Rich A - 8-1/2" Ruffled Dragon/Lotus Bowl**
 145. Lime Vaseline Opal - 9" Ruffled Dragon & Lotus Bowl - Repaired Tips
146. **A - 8-3/4", 3/1 Edge Peacock/Grape Bowl**
 147. G-10-1/4" Little Flowers Ruffled Bowl
148. **M - 9-1/2, 3/1 Edge Little Flowers Bowl**
 149. M - 10" Ruffled Cherry Chain Bowl
150. **M - 10-1/4", 3/1 Edge, Fenton Vintage Bowl - Really Nice**
 151. G - 10" Ruffled Feathered Serpent Bowl
152. **Beautiful M - 8-1/2" Ruffled Plaid Bowl**
 153. PO - 7-1/2" Ruffled Acorn Bowl
154. **Rare Moonstone - 7-1/4" ICS Fenton Grape/Cable Bowl**
 155. G - Iris Ruffled Compote
156. **W - Persian Medallion Rosebowl**
 157. Great Red - 6" Ruffled Fenton Holly Hat
158. **Red - 7" Ruffled Leaf Chain Bowl w/Tip Flaw?**
 159. Red - Persian Medallion Bonbon
160. **Red - 8-1/2" Ruffled Persian Medallion Bowl w/Marie Chip?**
 161. Dk. M - 7-1/2" Horse Medallion Plate - Very Detailed
162. **M - Horse Medallion Rosebowl - Neat Item**
 163. Scarce M - 7-1/2" Lions Plate - Chip on Tip
164. **Custard - 7-1/2" Lions Plate - Green Spray on Edges**
 165. Outstanding Radium M - 6-1/2" Persian Medallion Plate - Orange Tree on Reverse
166. **M - 7-1/4" Fish Scale/Beads Plate**
 167. W - 7" Fish Scale/Beads Plate
168. **PO - 6-1/2", 4 Flowers Plate**
 169. B - 7-1/2" Leaf Chain Plate - Scarce Size
170. **B - 6-1/4" Cherry Chain Plate - Orange Tree Reverse**
 171. Outstanding M - 6-1/2" Little Flowers Plate
172. **Custard - 7-3/4" Prayer Rug Plate - Non Irid**
 173. W - 8-1/2" Ruffled Orange Tree Bowl - Frosty
174. **M - 8" Imp. Heavy Grape Plate**
 175. P - 8-1/2" Imp. Heavy Grape Plate - Elec.
176. **Amber - 8-1/4" Ruffled Imp. Open Rose Bowl**
 177. Radium M - 9-1/2" Oval Windmill Dresser Tray - Outstanding
178. **Amber - 9" Ruffled Imp. Grape Bowl**
 179. Elec. P - Imp. Pansy Relish Dish
180. **Dk. Smoke - 8-3/4" Rnd., Flared Hattie Bowl**
 181. Stunning Amber - Homestead Chop Plate
182. **Amber - 10-1/2", 8 Ruffle, Imp. Heavy Grape Bowl - Unusual Shape**
 183. Rich Smoke - 8-1/4" Rnd. Imp. Windmill Bowl
184. **Elec. P - 8-3/4" Ruffled Scroll Embossed Bowl**
 185. Red - 7-1/2", 8 Ruffle, Fenton Acorn Bowl - Super Silver Irid.
186. **Scarce Aqua - 7" Ruffled Peacock/Dahlia Bowl**
 187. Dk. B - 6-3/4" ICS Peacock/Dahlia Bowl
188. **Radium A - 6" Ruffled O.E. Blackberry Bowl - Fantastic Finish**
 189. M - Daisy Square, CRE Stemmed Cuspidor Shape Bowl
190. **W - Pearlized Opaque Phoenix/Lacy Dew Drop Lge. Covered Compote**
 191. W - Pearlized - Lacy Dew Drop Goblet - Very Scarce
192. **G - 7-3/4" Rnd. Flared Fenton Vintage Grape Nut Bowl**
 193. A - 6" Fern Brand Chocolates Plate - Adver. is always in Big Demand
194. **A - 6" Hand Grip Fern Brand Chocolates Plate**
 195. A - 6" Ruffled Isaac Benesch/Sons Adv. Bowl
196. **A - N 6" Eagle Co. Furniture Plate - Rare, Light Irid.**

GREAT MILLERSBURG COLLECTION

197. A - Mlbg. 7" ICS Millersburg Court House Bowl
 198. **Radium M - Mlbg. Ruffled Millersburg Court House Bowl**
 199. M - Mlbg. 9" Ruffled Feathered Arrow Bowl
200. **M - Mlbg. Square Trout/Fly Bowl - Very Desirable**
 201. M - Mlbg. Ruffled Trout/Fly Bowl
202. **A - Mlbg. Trout/Fly Bowl**
 203. G - Mlbg. Trout/Fly Bowl
204. **Radium A - Mlbg. - ICS Big Fish Bowl**
 205. P - Mlbg. Hobnail Rosebowl
206. **M - Mlbg. Hobnail Swirl Rosebowl**
 207. Radium M - 9-1/4" Rnd. Fleur De Lis Bowl
208. **P - Mlbg. 9" Rnd. Flared Zig Zag Bowl - A Beauty**
 209. Radium M - 9" Mlbg. ICS Zig Zag Bowl - Pretty Magenta
210. **Rare G - Mlbg. 9" ICS Many Stars Bowl**
 211. M - Mlbg. 10" Ruffled Satin Many Stars Bowl
212. **Radium M - Mlbg. 9" ICS Rays/Ribbons Bowl**
 213. Satin M - Mlbg. 10" Ruffled Holly Whirl
214. **Radium G - 8" ICS, Mlbg. Mayan Bowl**
 215. Radium G - 7-1/2" ICS, Mlbg. Mayan Bowl
216. **Radium G - Mlbg. 6-3/8" Cosmos ICS Bowl**
 217. P - Mlbg. 8" Rnd. Flared Blackberry Wreath Bowl
218. **Radium G - Mlbg. 8" ICS Blackberry Wreath Bowl**
 219. Radium M - Mlbg. 8-1/2", 3/1 Edge Blackberry Wreath Bowl
220. **Beautiful Satin G - Mlbg. 8-3/4", 3/1 Blackberry Wreath Bowl**

- _____ 221. Radium Pastel M - 6-1/2" Rnd. Flared Blackberry Wreath Bowl - Shimmering Irid.
- _____ 222. **Radium P - 7" Tri Corner Blackberry Wreath Bowl**
- _____ 223. Radium G - Mlbg. 6", 3 in 1 Edge Blackberry Wreath Bowl
- _____ 224. **Super Radium G - Mlbg. 7-1/2" Ruffled Blackberry Wreath Bowl**
- _____ 225. Radium M - 5-1/4", 3/1 Edge Grape/Leaf Bowl
- _____ 226. **Radium P - Mlbg. 6-1/4", 3/1 Edge Grape Wreath Vt. w/Clover and Feather Design**
- _____ 227. Radium M - Mlbg. 6-1/2" ICS Grape Wreath Bowl - Feather Leaf Center
- _____ 228. **Satin M - Mlbg. 8-1/2" ICS Little Stars Bowl - Unusual Shape**
- _____ 229. Satin G - 7-1/2" Mlbg. Ruffled Little Stars Bowl
- _____ 230. **Satin A - 7-3/4" Mlbg. Ruffled Little Stars Bowl**
- _____ 231. M - Mlbg. 9-3/4" Rnd. Flared Out Peacock/Urn Bowl
- _____ 232. **Satin G - 10-1/3, 3/1 Edge Peacock/Urn Bowl**
- _____ 233. Satin G - Mlbg. 9-1/2" Nesting Swan Bowl
- _____ 234. **Radium G - Mlbg. 8-3/4", 3/1 Edge Mystery Peacock Bowl**
- _____ 235. Satin M - Mlbg. 8-3/4", 3/1 Edge Mystery Peacock Bowl
- _____ 236. **Radium M - 5-1/4" Rnd. Cherries Berry Dish**
- _____ 237. Satin G - Mlbg. 7", ICS Cherries Bowl
- _____ 238. **Beautiful M Satin - 6" Mlbg. ICS Cherries Bowl**
- _____ 239. Radium P - Mlbg. 6-3/4" ICS Cherries Bowl - A Beauty
- _____ 240. **A - 7-1/4" Mlbg., ICS Cherries Bowl**
- _____ 241. Satin M - Mlbg. 7-1/4" ICS Cherries Bowl
- _____ 242. **M - Mlbg. 6-1/4" Low Ruffled Cherries Bowl**
- _____ 243. Radium M - Mlbg. Cherries Sugar Bowl Lid
- _____ 244. **Beautiful M - Mlbg. 9-3/4" ICS Cherries Bowl**
- _____ 245. Great A - Mlbg. 10" ICS Cherries Bowl
- _____ 246. **Radium G - Mlbg. Holly Sprig Tri Corner Nappy**
- _____ 247. Radium G - 2 Sides Up Mlbg. Holly Sprig Bonbon
- _____ 248. **Scarce Radium P - 7-1/4" Mlbg. Tri Corner Holly Sprig Bowl**
- _____ 249. Radium G - Mlbg. 6-1/2" ICS Holly Sprig Bowl
- _____ 250. **Stunning Radium A - Mlbg. 6-1/2" Tri Corner Holly Sprig Bowl**
- _____ 251. Awesome Radium A - Mlbg. 6-3/4", 3/1 Edge Holly Sprig Bowl
- _____ 252. **Radium M - Mlbg. 3/1 Edge, 7" Holly Sprig Bowl**
- _____ 253. Radium M - Mlbg. 8-1/4", 3/1 Edge Holly Bowl w/Rare 8 pt. Star Center
- _____ 254. **Radium G - Mlbg. Ruffled Peacock Tail (Vt.) Compote**
- _____ 255. Satin P - Mlbg. Ruffled Peacock Tail (Vt.) Compote
- _____ 256. **Super Radium P - Mlbg. Peacock Tail (Vt.) Compote**
- _____ 257. Radium M - Mlbg. Leaf/Little Flowers Compote
- _____ 258. **Radium G - Mlbg. Leaf/Little Flowers Rnd. Compote - WOW!**
- _____ 259. Fantastic Radium G - Mlbg. Leaf/Little Flowers Ruffled Compote
- _____ 260. **Radium P - Mlbg. 6" Ruffled Boutonniere Compote**
- _____ 261. Radium G - Mlbg. 6" Ruffled Boutonniere Compote
- _____ 262. **Beautiful Satin P - Mlbg. 10" ICS Rosalind Bowl**
- _____ 263. Satin G - Mlbg. 10" Ruffled Rosalind Bowl
- _____ 264. **Pretty A - Mlbg. 9-1/4" Ruffled Rosalind Bowl - Different Marie**
- _____ 265. Radium A - Mlbg. 9-3/4" Ruffled Primrose Bowl
- _____ 266. **Radium G - Mlbg. 9-3/4" Ruffled Primrose Bowl**
- _____ 267. Radium G - 10-1/4", 3/1 Edge Ruffled Strawberry Wreath Bowl - Large
- _____ 268. **Radium A - 9-3/4" Mlbg. Ruffled Strawberry Wreath Bowl**
- _____ 269. Radium M - 7-1/4" Mlbg. Ruffled Strawberry Wreath Bowl
- _____ 270. **Radium M - Mlbg. 9-1/4" Ruffled Primrose Bowl**
- _____ 271. Very Rare A - Mlbg. 5-3/4" Rnd. Holly Sprig Compote - 1 or 2 Known
- _____ 272. **Radium G - Mlbg. 9-3/4" Hobnail Swirl Vase**
- _____ 273. Radium A - Mlbg. 11-1/4" Hobnail Swirl Vase
- _____ 274. **Radium M - Mlbg. 12" Hobnail Swirl Vase**
- _____ 275. Radium P - Mlbg. 12", 4 Pillars Vase
- _____ 276. **M - 9-3/4" P.C.E. Wishbone Bowl**
- _____ 277. Incredibly Pretty Pastel AO - Ruffled Good Luck Bowl - Also Rare
- _____ 278. **P - 9" N Good Luck Plate - BW Exterior**
- _____ 279. Elegant M - PCE Good Luck Bowl - Loaded w/Pinks
- _____ 280. **M - Stippled Ruffled Good Luck Bowl w/Lovely Pinks & Blues**
- _____ 281. G - Ruffled Good Luck Vt. Bowl - Faded Center
- _____ 282. **Pretty M - Ruffled Good Luck Bowl - Rib Exterior**
- _____ 283. Blue - Ruffled Good Luck Bowl - Rib Exterior - Multi Elec.
- _____ 284. **P - Ruffled Good Luck (Vt.) Bowl - Scarce Item**
- _____ 285. Plush M - Stippled Ruffled Good Luck Bowl
- _____ 286. **M - Grape/Cable Dresser Tray - Very Nice**
- _____ 287. M - Grape/Cable Candlesticks - Well Matched
- _____ 288. **M - Vintage Grape Powder Jar/Lid**
- _____ 289. Scarce G - Old Rose Distilling Adv. Stippled Grape/Cable Plate
- _____ 290. **Pumpkin M - PCE Grape/Cable Bowl w/Plain Back**
- _____ 291. Elec. B - 10-3/4" Ruffled Grape/Cable Bowl - Chip on Back - Still Beautiful
- _____ 292. **Ultra Rare Lime Green - PCE Stippled Grape/Cable Bowl - 2 or 3 Known**
- _____ 293. Elec. B - 10" ICS, N Peacock/Urn Bowl - Collectors Dream
- _____ 294. **Fully Stippled Blue - N 5-1/2" ICS Peacock/Urn Bowl**
- _____ 295. P - 10" ICS, N Peacock/Urn Bowl
- _____ 296. **Pretty M - 9-3/4" ICS, N Peacock/Urn Bowl**
- _____ 297. Pumpkin M - 5-1/2" ICS, N Peacock/Urn Bowl
- _____ 298. **W - 10" ICS, N Peacock/Urn Bowl - Rainbow of Color**
- _____ 299. Scarce Custard - 9-3/4" ICS Peacock/Urn Bowl - Nutmeg Finish
- _____ 300. **Custard - 5-1/2" ICS Peacock/Urn Bowl - Rare w/No Bee**
- _____ 301. Magnificent Magenta M - 9-1/4" Rose Show Plate - Blue Ribbon Winner
- _____ 302. **Blue - Ruffled Rose Show Bowl - Multi Elec. - Chip on Top of Marie**
- _____ 303. Dk. Ice Blue - Ruffled Rose Show Bowl - Award Winning Rarity



- _____ 304. **Pumpkin M - PCE Peacock Bowl**
 _____ 305. AO - Ruffled Peacocks Bowl - Chip Between Tip, but Scarce
 _____ 306. **Ice G - Peacocks Plate - An Old Friend**
 _____ 307. M - Ruffled Peacocks Bowl w/Rare BW Exterior
 _____ 308. **Pastel M - PCE Stippled Peacocks Bowl - Loaded w/Pinks**
 _____ 309. W - N Peacock/Fountain, 9" Rnd. Master Berry Bowl w/5 Sauces
 _____ 310. **M - Stippled 3 Fruits Plate w/Rib Back - Another Favorite**
 _____ 311. M - Ruffled Stippled 3 Fruits Bowl
 _____ 311A. Purple - Stippled 3 Fruits Plate
 _____ 312. **Rich Ice Blue - Ruffled N Poppy Show Bowl - Loaded w/Blue Irids - Also Rare**
 _____ 313. P - Grape/Cable Sweetmeat Compote w/Lid
 _____ 314. **M - Ruffled Hearts/Flowers Bowl - Scarce**
 _____ 315. Dk. Ice B - Ruffled Hearts/Flowers Bowl w/Plain Bk. - Beautiful
 _____ 316. **Radium Ice B - PCE Nippon Bowl**
 _____ 317. Pretty M - Beaded Cable Rosebowl
 _____ 318. **Rare Smoke - 8" Zipper Loop Lamp - Outstanding**
 _____ 319. M - 8" Zipper Loop Lamp w/Clear Base
 _____ 320. **M - 8" Zipper Loop Lamp - Color Top to Bottom**
 _____ 321. Vaseline - 8" Zipper Loop Lamp - Non Irid.
 _____ 322. **Saph. B - 8" Zipper Loop Lamp - Non Irid.**
 _____ 323. Crystal/Cranberry Flashed - 8" Zipper Loop Lamp w/No Irid.
 _____ 324. **Saph B - Zipper Loop Finger Lamp - Non Irid.**
 _____ 325. Crystal - Zipper Loop Finger Lamp - Non Irid.
 _____ 326. **Amber - Zipper Loop Finger Lamp - Non Irid.**
 _____ 327. Smoked - 8" Zipper Loop Lamp - Signed IG
 _____ 328. **M - 8" Zipper Loop Lamp - Signed IG**
 _____ 329. Jade G - US Glass #310 Plate 718 Candlesticks
 _____ 330. **Saph. B - Fenton, Cut Ovals #349 Candlesticks - Rare**
 _____ 331. Beautiful Wisteria - Fenton Florentine Tall Candlesticks
 _____ 332. **Red - Diamond Mae West Egyptian Lustre Candlesticks**
 _____ 333. BA - Diamond Mae West Egyptian Lustre Stretch Candlesticks
 _____ 334. **Vaseline IG - Fenton #549 Spindle Candlesticks**
 _____ 335. Wisteria - Diamond Glass Co. Spindle Candlesticks
 _____ 336. **Vaseline Florentine IG - Diamond Co. Spindle Candlesticks**
 _____ 337. Yellow Vaseline - N Spindle Candlesticks
 _____ 338. **Rare Teal - Imp. #320 Double Scroll Candlesticks**
 _____ 339. Red Amberina - #320 Double Scroll Candlesticks
 _____ 340. **Celeste B - US Glass #315, Plate 714 Spiral/Bell Shaped Candlesticks**
 _____ 341. Topaz Vaseline - US Glass #315, Plate 714 Spiral/Bell Shaped Candlesticks
 _____ 342. **Rare G - Cambridge Inverted Strawberry Candlesticks - Normal Base Chips**
 _____ 343. M - Cambridge Inverted Strawberry Candlesticks - Hard to Find - Normal Wear
 _____ 344. **W - Stretch Fenton Cornucopia #950 Candlesticks**
 _____ 345. Ice B Stretchy - Fenton Cornucopia #950 Candlesticks
 _____ 346. **M - Inverted Strawberry Cuspidor - Base Cracked**
 _____ 347. G - Inverted Strawberry Powder Dish w/Lid
 _____ 348. **Dk. M - Covered Nesting Swan Dish**
 _____ 349. M - Little Barrel Novelty - Outstanding
 _____ 350. **Flashed M - Blue Ring Czech. 7 pc. Cordial Set**
 _____ 351. M - Kittens 2-3/4" Vase or Toothpick Holder
 _____ 352. **Great M - Kittens Cereal Bowl**
 _____ 353. M - Kittens Bowl - 4 Sides Up
 _____ 354. **M - Kittens Card Tray Plate - 2 Sides Up**
 _____ 355. M - 6 Sided Kittens Bowl
 _____ 356. **Amber Stretch - 8" Bulbous Base w/Polished Pontil**
 _____ 357. Topaz Vaseline - 11-1/2" U.S. Glass #151 Flared Lily Vase
 _____ 358. **Celeste B - 11-1/2" U.S. Glass #151 Flared Lily Vase**
 _____ 359. Russet - N 6" Concave Diamond Vase
 _____ 360. **Pink Stretch - Guest Set - Scarce**
 _____ 361. Vaseline Topaz Stretch - 7-1/4" Ruffled Compote
 _____ 362. **Lime Vaseline - 7" Hobnail Soda Gold Spittoon - Non Irid.**
 _____ 363. Ultra Rare W Stretch - Oil/Vinegar Server - Signed Hawks
 _____ 364. **W - 9" Diamond/Rib Vase - Very Scarce**
 _____ 365. Elec. P - 18-1/4" Morning Glory Vase - 4-7/8" Base - WOW!
 _____ 366. **M - Colonial Lady ? or Rib Panel Cuspidor Shaped Vase**
 _____ 367. Mandrian Red - N 13" Mid Size Thin Rib, 4-5/8" Base
 _____ 368. **Emerald G - 9-1/2" N Thin Rib Vase**
 _____ 369. B - 7-3/4" N Thin Rib Vase - Multi Electric
 _____ 370. **P - Squatty 6-5/8" N Thin Rib Vase**
 _____ 371. P - 11-1/4" Tree Trunk Vase
 _____ 372. **Radium G - 9" Tree Trunk Vase**
 _____ 373. M - 6-3/8" Squatty Tree Trunk (Vt.) Vase
 _____ 374. **Radium G - 11-1/2" Long Thumbprint Vase - Scarce**
 _____ 375. Saph. - 9-1/2" Fenton Fine Rib Vase
 _____ 376. **B - 9-1/4" CRE Top Knotted Beads Vase**
 _____ 377. B - 9" CRE Top Knotted Beads Vase
 _____ 378. **Pearlized W - Rare Westmoreland 1700 Colonial Lily Vase**
 _____ 379. Great M - N 6-3/8" Squatty Feathers Vase - 5-1/4" Top - Pumpkin
 _____ 380. **W - 9" Lattice/Pts. Vase - No Daisy In Base**
 _____ 381. M - 9" Lattice/Pts. Vase - Has Daisy in Base
 _____ 382. **W Frosty - 4-3/4" Squatty Diamond/Points Vase - No Daisy in Base - 5-1/2" Top**
 _____ 383. BA - 9-1/2" Lined Lattice Vase
 _____ 384. **Crystal Vaseline - Australian Lily Vase - Non Irid.**
 _____ 385. Violet - 11" Imp. Freefold Vase
 _____ 386. **Rare Amber - 10" CRE Knotted Beads Vase**
 _____ 387. Green - 9-1/2" Fenton Flute Vase
 _____ 388. **Aqua Opal - N 10", 4 Pillars Vase - Tip Nick**
 _____ 389. M - 9-1/2" Jain Fish Vase - Dark/Scarce
 _____ 390. **Soft M - 9-1/2" Jain Fish Vase**
 _____ 391. PO - 7-1/4" Thin Panel JIP Vase - Neat
 _____ 392. **Frosty W - 7-1/2" Rustic Vase**
 _____ 393. Contemporary Pink - S.B., Lge. Poppy Vase

- 394. Contemporary Emerald G - S.B., Lge. Poppy Vase
- 395. Soft Green Topaz - S.P., Lge. Poppy Vase
- 396. Cobalt B - HOACGA, 2004 Guest Set
- 397. Teal - 1989 Bell - HOACGA
- 398. Aqua Opal - DBS Farmyard Cuspidor
- 399. Red - Contemporary - Fenton Goldfish Jardiniere
- 400. BA - Fenton, Hand Painted Floral, 7 pc. Water Set - Signed/Dated Louise Piper 8-5-81
- 401. Teal - ICGA, 2003 Frolicking Bears JIP Whimsey
- 402. Red - ICGA, 2002 Frolicking Bears JIP Whimsey
- 403. M - N 9-3/4" Wild Strawberry Ruffled Bowl
- 404. Dk. B - N Scarce Double Loop Open Sugar
- 405. M - N Strawberry Plate
- 406. Pumpkin M - N Fruits/Flowers Compote
- 407. A - N Dandelion Mug - Interior Crack
- 408. Pumpkin M - Dandelion Mug
- 409. Scarce M - Knights Templar Dandelion Mug
- 410. Rare Aqua Opal - Singing Birds Mug
- 411. Pumpkin M - Stippled Singing Birds Mug
- 412. Dandy G - Stippled Singing Birds Mug
- 413. Rare B - Stippled Singing Birds Mug
- 414. Great, Frosty W - Singing Birds Mug
- 415. Custard Nutmeg - Singing Birds Mug
- 416. Lav. - Singing Birds Mug - Radium
- 417. Ice B - Singing Birds Mug - Interior Crack
- 418. Elec. B - Singing Birds Mug
- 419. P - Singing Birds Mug
- 420. Lav. - Singing Birds Mug - Elec.
- 421. Blue Opal - Singing Birds Mug - No Irid.
- 422. Pumpkin M - Stippled Singing Birds Mug
- 423. P - Stork/Rushes Banded Mug
- 424. A - Stock/Rushes Banded Mug
- 425. Pretty M - 3-1/2" Opening Orange Tree Mug
- 426. Rare Red Amberina - 3-1/2" Opening Orange Tree Mug
- 427. SCARCE Green - 3-1/2" Opening Orange Tree Mug
- 428. Rich Amber - 3-1/2" Opening Orange Tree Mug
- 429. Radium M - 3-1/2" Opening Orange Tree Mug
- 430. Yellow Vaseline - 3-1/2" Opening Orange Tree Mug
- 431. Blue - 3" Base Orange Tree Mug
- 432. Saph. - 2-1/2" Base Orange Tree Mug
- 433. Pinkish - 2-1/2" Base Orange Tree Mug

- 434. P.O. - 9-1/2", 10 Ruffle Flowers/Spades Bowl - Very Scarce
- 435. Beautiful P.O. - 9" CRE Flowers/Frames Tri-Cornered Bowl
- 436. M - 9-1/4", 3/1 Crimped Weeping Cherries Bowl - Another Rarity
- 437. P.O. - 8" Enameled Violets, Stippled Flower Ruffled Bowl
- 438. P.O. - Deep 10 Ruffle, 7-3/4" Ski Star & Compass Bowl
- 439. P.O. - 5-3/4", 8 Ruffle Wishbone/Spades Bowl
- 440. P.O. - Leaf Rays Nappy
- 441. MMG - Westmoreland 8-3/4" Ruffled Daisy Wreath Bowl - Rare
- 442. B. Opal - 8-1/4" Ruffled Daisy Wreath Bowl - Undervalued
- 443. Moonstone - 8-3/4" Ruffled Carolina Dogwood
- 444. Frosty W - 8-3/4" Low Ruffle Fanciful Bowl
- 445. W - 9" Fanciful Plate
- 446. Beautiful W - 9" Low Ruffle Apple Blossom/Twigs Bowl
- 447. Frosty W - 7-3/4" Grapevine/Lattice Low Ruffle Bowl
- 448. Unusual G - 9" Ruffle 4 Flowers Vt. Bowl
- 449. Lav. - Grape Delight Rosebowl
- 450. Frosty W - Orange Tree Punch Bowl Top
- 451. W - Acorn Burrs Punch Bowl Base
- 452. G - Acorn Burrs Punch Bowl Base
- 453. P - Acorn Burrs Punch Bowl Base
- 454. P - Grape/Cable Small Size Punch Bowl Base
- 455. G - Acorn Burrs Punch Cups - 2 x \$
- 456. M - Grape/Gothic, 4 Place Table Setting
- 457. M - Peacock/Fountain Spooner
- 458. M - Peacock/Fountain Creamer
- 459. M - Peacock/Fountain Sugar Bowl w/Lid
- 460. W - Peacock/Fountain Sugar Bowl w/Lid
- 461 thru 502. 57 Tumblers - Bargain Time
- 503 thru 524. Box Lots - Call or Email for Information!

SPECIAL NOTE:

NO SUNDAY CALLS, PLEASE!

Winning Absentee Bidders will be contacted Monday through Wednesday of the week following the Auction!

Thank You!

SEND ALL MAIL TO:

18350 Hunters Ridge Ct.
Boonville, MO 65233

AUCTION CALENDAR OF EVENTS

November 17 @ 9:00 am

Carnival Glass Auction @ Boonville, MO

January 12, 2008 @ 9:00 am

17TH ANNUAL NEW YEARS EXTRAVAGANZA

Carnival Glass Auction @ Boonville, MO

Call Today To Sell Your Fine Items

660-882-5292 Day

660-882-5283 Evening

WATCH:  **Web Site: www.AWK.SHN.com**

www.AWK-SHN.com
MICKEY REICHEL
 ANTIQUE & AUCTION, L.C.
 18350 HUNTERS RIDGE CT.
 BOONVILLE, MO 65233

PRESORTED
 FIRST CLASS MAIL
 US POSTAGE PAID
 SEDALIA, MO
 PERMIT 217

FIRST CLASS MAIL
 SPECIAL INVITATION TO:

RETURN SERVICE REQUESTED



8*1*****MIXED AADC 650

LEE MARKLEY

PO BOX 306

MENTONE, IN 46539-0306

