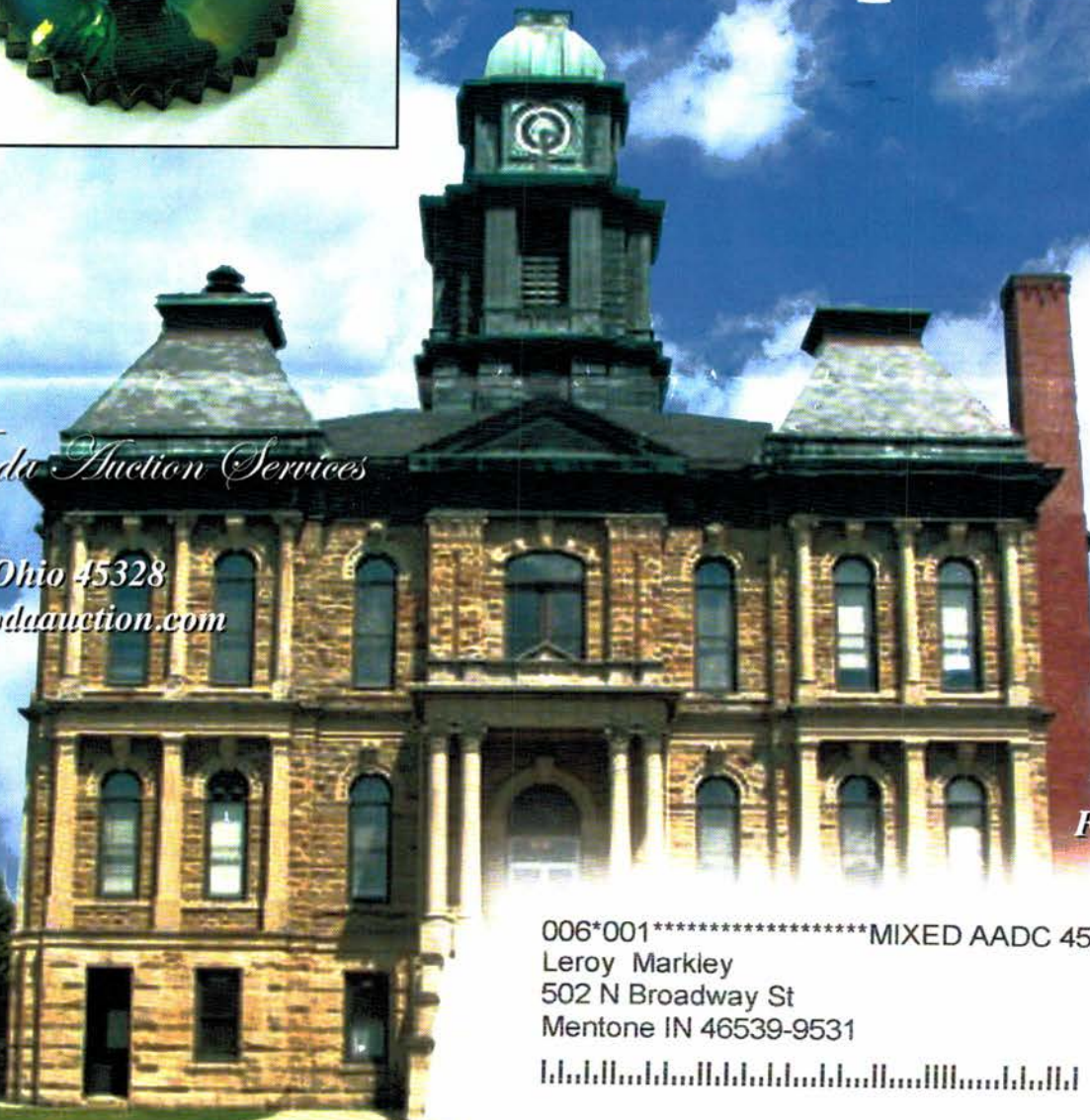




Jim Wroda Auction Services
POB 1111
Gettysburg Ohio 45328
www.jimwrodauction.com

PRESORTED
FIRST CLASS MAIL
U.S. POSTAGE
PAID
CELINA, OH
PERMIT NO. 99



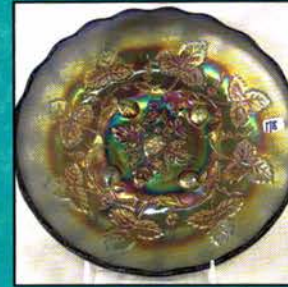
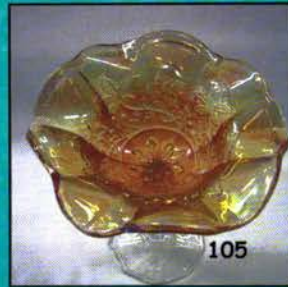
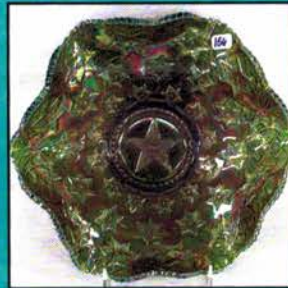
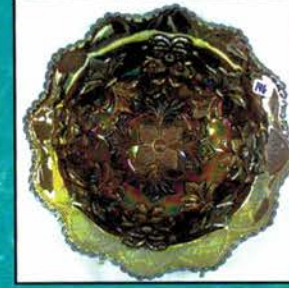
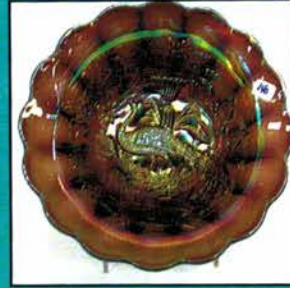
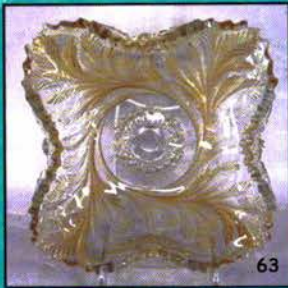
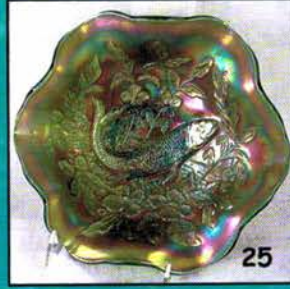
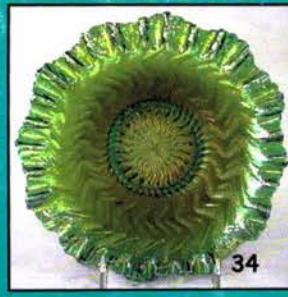
First Class

006*001*****MIXED AADC 458
Leroy Markley
502 N Broadway St
Mentone IN 46539-9531



Millersburg Carnival Glass Auction
Saturday, October 6th 2007 11:00am
Millersburg Courthouse, Millersburg, Ohio

Millersburg Courthouse, Millersburg, Ohio
Volume 10, Series 2007



MILLERSBURG CARNIVAL GLASS AUCTION

SATURDAY OCTOBER 6TH 2007 at 11:00 AM

PREVIEW WILL BE 9:00AM TO AUCTION TIME SATURDAY

MILLERSBURG COURTHOUSE FRONT LAWN

MILLERSBURG, OHIO

On Saturday October 6th we will be standing on the Millersburg courthouse front lawn under a tent! This is going to be a wonderful time for all. This has never happened before and probably never will again! The auction coincides with the Holmes County Festival weekend. There will be lots of activities planned for the entire weekend. A guided tour of the courthouse has been set up for anyone that wants to go on Friday at 11:00 am. After the tour there will be a lunch served under the tent for all. PLEASE RSVP TO LAURIE IF YOU PLAN ON ATTENDING. Then there will be a trip to Ray Miller's house if you want. I have done this twice! You definitely want to go to his house! Also Ben Hershberger will be open until 8:00pm Friday night if you want to go there. All of this within 10 miles of each other. Of course, don't forget the parade at 3:00pm Saturday after the auction! All in all this will be a weekend to remember! We really look forward to seeing you there, but if you cannot make it, please go through the catalog and give Laurie a call with some bids. Thanks, Jim
A GREAT BIG Thanks to Steve Maag, Kaufman Realty and The entire staff that co-ordinates the Holmes county festival!!!

*****Mail, E-mail, Phone, and Absentee Bids Policy:*****

*****Mail, E-mail, Phone, and Absentee Bids Policy:*****

1. Phone inquiries on items of interest are welcome! 937-447-4905
2. Bidders take full responsibility to honor any and all bids that are executed in your behalf.
3. All items to be paid for within 7 days of notification unless other arrangements are made prior to auction. Successful absentee bidders must also pay estimated shipping costs. NOTE: There will be a \$5.00 fee added, per item, to the price of all successful absentee bids plus postage and insurance. With the new postal Regulations, Increased postage and restrictions on mailing packages a Credit card will be needed for Postage. NOTE: 3% credit card use **WILL NOT** apply to postage costs.
4. All items bid competitively against the audience. **We do not start with your bid.**
5. Items will be bid on in **perfect condition** with average to above average iridescence unless otherwise stated or noted on your order of sale list or absentee bid sheet. **We will describe each item as accurately as possible!! (see listing) Bids will not be carried out if damage is found during auction.** If manufacture problems bother you such as air bubbles, pulled points, soda ash, tool marks, or any other manufacturing flaw, please be specific in your mail bids or email bids. *If there is a manufacture flaw on an item that we feel is truly distracting, we have noted that in the listing already. Auction Company has the right NOT to execute an absentee bid for any reason.*
6. All bids can be called in to: (937) 447-4905, faxed to 937-548-3492, or sent to POB 1111 Gettysburg, Ohio 45328 You can also e-mail bids directly from our website and ask questions (Please Ask!)
7. **All mail, faxed, write-in, and email bids due by Thursday, Aug. 2nd - 3:00 p.m.**
8. **Anyone wishing to live phone bid, requests due by Weds. Aug. 1st - 5:00 p.m.**
9. If someone in the audience is bidding for you they must pay for the item(s) before leaving.

****To view more pictures on the web: www.jimwrodauction.com ****

For lodging information go to: <http://www.visitamishcountry.com/>

Terms and Conditions of Auction: Cash, Travelers checks, business or personal checks with proper I.D. Visa and MC and Discover with a 3% clerk fee.

Directions: Please see inserted map for driving directions.



Jim Wroda Auction Services



Jim Wroda and Mike Baker CAI - Auctioneers

POB 1111 Gettysburg Ohio 45328

Daytime: 937-447-4905 or Laurie's cell at 937-459-9562 Email: laurie@jimwrodauction.com

Auction in co-operation with:

Steve Maag, REALTOR, e-PRO, GRI - Kaufman Realty & Auctions Sugarcreek, Ohio 44681

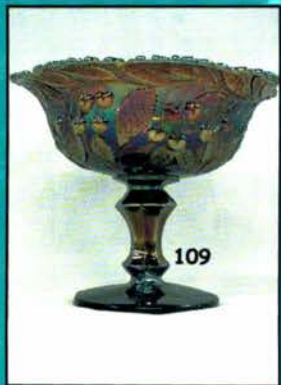
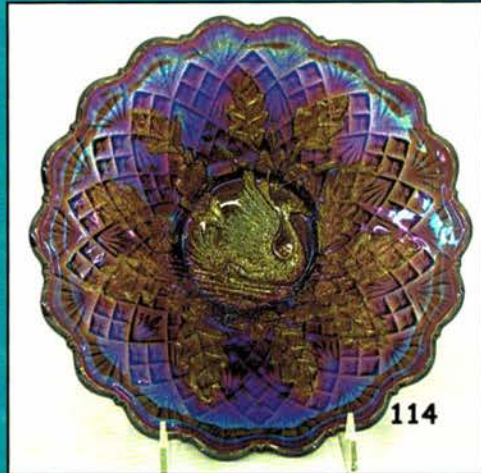
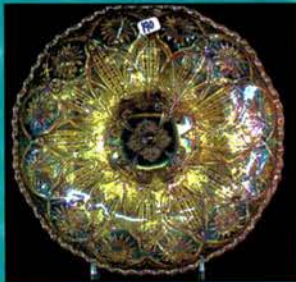
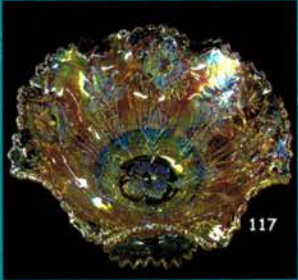
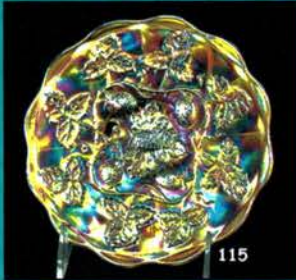
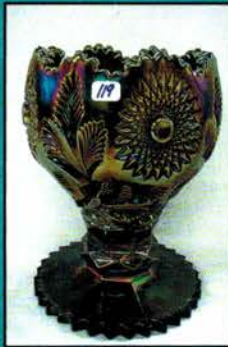
Rapid Printing - Greenville, Ohio - 937-548-1010

- | | | | |
|------|---|-----|--|
| 1. | M-burg crystal 11" frosted Hobstar & Feather chop plate. Tiny flick on point | 34. | M-burg 8" radium green Zig Zag square CRE bowl. Very Scarce. |
| 2. | M-burg crystal 7" frosted Hobstar & Feather 4-side up relish tray. | 35. | M-burg 9" radium mari. Rays & Ribbons 3/1 edge bowl. |
| 3. | M-burg crystal 7" frosted Hobstar & Feather hand-grip card tray. | 36. | M-burg 10" radium green Fleur-de-lys collar base bowl. |
| 4. | M-burg crystal frosted Hobstar & Feather stemmed compote. | 37. | M-burg 9" radium purple Whirling Leaves square CRE bowl. Very Nice Blue Iridescence!!! |
| 5. | M-burg crystal Hobstar & Feather compote. | 38. | M-burg 9" radium pastel mari. Holly Whirl ruffled bowl. Super! |
| 6. | (2) M-burg crystal 7" frosted Hobstar & Feather relish trays. 2 x \$ | 39. | M-burg crystal /Goofus glass Intaglio Wild Rose Riverside oil lamp. Small font. |
| 7. | M-burg crystal Ohio Star vase. | 40. | M-burg 9" radium pastel mari. Zig Zag tri-corner CRE bowl. Super! |
| 8. | M-burg crystal Ohio Star jelly compote. | 41. | M-burg 9" radium pastel mari. Rays & Ribbons ICS bowl. |
| 9. | M-burg crystal Hobstar & Feather tankard. Small flake on rim | 42. | M-burg 9" radium green Rays & Ribbons deep round bowl w/flared edge. |
| 10. | M-burg crystal frosted Hobstar & Feather tankard blank. This took a metal top. | 43. | M-BURG 9" LAVENDER TROUT & FLY ICS BOWL. INCREDIBLE IRIDESCENCE. |
| 11. | M-burg crystal Ohio Star tankard | 44. | M-burg 8" purple Big Fish ICS bowl. Great Pressing. |
| 12. | (2) M-burg crystal frosted Hobstar & Feather tumblers. Rare. 2 x \$ | 45. | M-burg 8 1/2" green Trout & Fly ICS bowl. Very nice. |
| 13. | (3) M-burg crystal Hobstar & Feather tumblers. Rare. 3 x \$ | 46. | M-burg 6" Isaac Benesch & Sons ruffled bowl |
| 14. | M-burg crystal 5" Ohio Star Tri-corner mint dish | 47. | M-burg 5" amy. Rosalind ruffled bowl. Very scarce. |
| 15. | (2) M-burg crystal Hobstar & Feather banana boats. 2 x \$ | 48. | M-burg purple Wild Rose Midsize oil lamp. Great color & detail. A nice lamp. |
| 16. | M-burg crystal frosted Hobstar & Feather 9" deep round bowl. Tiny flick on point. | 49. | M-burg radium green Marilyn water pitcher. Outstanding! Here it is! |
| 17. | (2) M-burg crystal frosted Hobstar & Feather 9" ice cream trays. Both have a chip on point. 1-lot. | 50. | M-burg radium mari. Hanging Cherries compote. Beautiful color. Scarce |
| 18. | M-burg crystal Hobstar & Feather 4-piece bridge set. Some flaking. | 51. | M-burg purple Feather & Heart water pitcher. One of the better ones! |
| 19. | M-burg crystal Ohio Star butter dish | 52. | M-burg 7" radium mari. Holly Whirl square bowl. Very nice. |
| 20. | M-burg crystal Ohio Star vase | 53. | M-BURG AMY. 6" PEACOCK AT URN FLAT PLATE. VERY RARE! |
| 20a. | M-burg 10" MARIGOLD TREFOIL AND FINE CUT CHOP PLATE. EXCEEDINGLY RARE ONLY ONE KNOWN IN ANY COLOR! THIS IS A VERY SPECIAL PIECE OF GLASS! | 54. | M-burg 5" mari. Peacock at Urn ruffled bowl. No Bee, no beads. Rare. |
| 21. | M-burg Hobstar & Feather crystal basket | 55. | M-burg 6" purple Peacock at Urn ruffled bowl. Bee w/beads. |
| 22. | M-burg 8" purple Courthouse ruffled bowl. Tiny nick on edge. The Star of the day!!! | 56. | M-burg 9" green Peacock at Urn 3/1 edge bowl. Great blue irid. on satin finish. |
| 23. | M-burg 10" mari. Seaweed 3/1 edge bowl | 57. | M-burg purple Rosalind Vt. small compote. Super |
| 24. | M-burg 8 1/2" radium mari. Trout & Fly 3/1 edge bowl. Nice | 58. | M-burg green Rosalind Vt. small compote. Super color. Super! |
| 25. | M-burg 8 1/2" green Trout & Fly ruffled bowl | 59. | M-burg crystal Hobstar & Feather flared punch set. Rare variation w/flared top. |
| 26. | M-BURG 12" MARI. PEACOCK AT URN CHOP PLATE. SUPER RARE W/GREAT PRESSING. WHAT A CHANCE! | 60. | M-burg crystal Ohio Star punch set. |
| 27. | M-BURG 11" AQUA/TEAL ROSE COLUMNS VASE. VERY RARE COLOR. PRETTY | 61. | M-burg cast bank 1884 Holmes Co. Court House-1984 (Millersburg) 100 year anniversary. |
| 28. | M-burg green Peacock at Urn giant compote. Getting hard to find. Nice. | 62. | M-burg RADIUM EMERALD GREEN HOBSTAR & FEATHER GIANT ROSEBOWL. UNBELIEVABLE IRID. W/GOLD AURENE INTERIOR. SMALL FLAKE ON SAWTOOTH BASE AS THEY ALL HAVE. WHO CARES!!! ONE OF THE TOP PIECES OF GREEN MILLERSBURG EVER MADE!!! LOOKS LIKE A MILLION BUCKS!!! |
| 29. | M-BURG RADIUM PURPLE HOBSTAR & FEATHER TULIP TOP 14 PC. PUNCH SET. SUPER RARE W/OUTSTANDING COLOR. | 63. | M-burg 10" mari. frosted Hobstar & Feather square bowl. Super rare |
| 30. | M-burg mari. Hobstar & Feather 10 pc. punch set. Has small no harm open bubble on base of bowl. | | |
| 31. | M-burg radium purple Holly Whirl spade shape nappy. Super. | | |
| 32. | M-burg 9" radium purple Whirling Leaves 3/1 edge bowl. | | |
| 33. | M-burg 9 1/2" radium mari. Grape Leaves 3/1 edge bowl. Rare. | | |

64. M-BURG EMERALD GREEN DEEP GRAPE ROSEBOWL COMPOTE. EXTREMELY RARE. ONLY GREEN ONE WE KNOW OF. SUPER PIECE OF GLASS
65. M-burg green Deep Grape flared round shaped compote. Beautiful.
66. M-burg purple Deep Grape square compote. Rare! A great set of Deep Grape compotes!!!!!!!
67. M-burg 7" green Little Stars ruffled bowl. Nice!
68. M-burg 7" mari. Little Stars ruffled bowl. Nice!
69. M-burg 5" radium green Peacock at Urn ICS bowl, no bee, no beads. Very Rare.
70. M-burg 9" radium green Many Stars 3/1 edge bowl. Small fill on collar base.
71. M-burg 8" green Blackberry Wreath 3/1 edge bowl.
72. M-burg 10" radium green Whirling Leaves ruffled bowl. Super!
73. M-burg 8" green Trout & Fly ruffled bowl. Nice!
74. M-burg 9" mari. Trout & Fly 3/1 edge bowl. Very nice!
75. M-burg mari. Ohio Star vase. Great color but Has chips on base.
76. M-burg 8" radium mari. Grape Wreath Vt. CRE bowl.
77. M-burg 5" BLUE Peacock at Urn ICS bowl. Scarce. No bee, no beads.
78. M-burg 8" radium purple Strawberry Wreath square bowl. Super.
79. M-burg 6" radium green Cosmos ICS bowl.
80. (5) M-burg 5" radium purple Peacock at Urn ruffled sauces. No bee, no beads. Rare bowls. Choice.
81. M-burg 5" BLUE Peacock at Urn ICS bowl. Scarce
82. M-burg mari. Feather & Heart water pitcher.
83. M-burg 5" radium mari. Peacock at Urn proof berry bowl. Scarce and nice!
84. M-burg 7 1/2" radium purple Courthouse bowl. Beautiful multicolor irid. Great pressing.
85. M-burg purple Hanging Cherries 6-pc. table set. Butter base is cracked. Scarce set.
86. M-burg 9" radium mari. Primrose ruffled bowl.
87. M-burg 7" radium purple Blackberry Wreath ruffled bowl.
88. M-burg 6" radium mari. Holly Whirl card tray.
89. M-BURG PURPLE MITERED OVALS CRE VASE. RARE. NICE DETAIL.
90. M-BURG 8" RADIUM PURPLE ELKS RUFFLED BOWL. SCARCE. ALWAYS DESIRABLE
91. M-burg amy. Seacoast pin tray. Super bright irid. Tiny flake on back edge as always.
92. M-burg green Sunflower pin tray. Scarce. Tiny flea bite on back as always.
093. M-burg 8 1/2" mari. Big Fish 3/1 edge bowl. Scarce variation.
94. M-burg purple Hobnail Swirl spittoon. Very scarce. Does have crack in base.
95. M-burg 10" green Hobnail Swirl vase. Minor peeling on edge.
96. M-burg purple Seacoast pin tray. Nice.
97. M-burg purple Sunflower pin tray. Chip on back of handle.
98. M-burg 9 1/2" radium purple Peacocks ICS bowl. Scarce.
99. M-burg 7 1/2" radium purple Courthouse 6-ruffle bowl. Nice.
100. M-burg crystal-lavender Wild Rose intaglio large oil lamp
101. M-burg BLUE ROSALIND RUFFLED JELLY COMPOTE. EXTREMELY RARE. ONLY ONE KNOWN. A TOP PIECE IN THIS AUCTION AND ANY COLLECTION!!!
102. M-burg GREEN ROSALIND JELLY COMPOTE. VERY RARE. JUST A COUPLE KNOWN.
103. M-burg PURPLE ROSALIND JELLY COMPOTE. GREAT COLOR. JUST A FEW KNOWN.
104. M-burg RADIUM PURPLE FLUTE JELLY COMPOTE. LOTS OF HEAVY BLUE IRID. SCARCE.
105. M-burg RADIUM MARI. FLOWERING VINE RUFFLED JELLY COMPOTE. EXTREMELY RARE. FIRST ONE TO SELL IN YEARS.
106. M-burg radium mari. Acorn compote. More rare than vaseline.
107. M-burg radium mari. Hobstar & Feather 6" stemmed compote. Very rare. Has chipping on teeth.
108. M-burg 10" radium mari. Ohio Star jelly compote. Super rare and very nice!!!
109. M-burg radium purple Hanging Cherries flared compote. Best one we've ever seen!!
110. M-burg RADIUM PURPLE MULTI FRUIT AND FLOWER WATER PITCHER W/DRAPE BASE. EXCEEDINGLY RARE PITCHER AND BEAUTIFUL. HAS A COUPLE OF MFG. HEAT CHECKS IN DRAPED PART OF THE BASE. TYPICAL FOR THIS WATER PITCHER.
111. M-BURG 9" RADIUM GREEN SEAWEED PLATE. VERY RARE W/ NICE RADIUM MULTICOLOR IRID.
112. M-BURG 9" RADIUM EMERALD GREEN GRAPE LEAVES SQUARE BOWL. EXTREMELY RARE W/TREMENDOUS STUNNING BLUE IRID.
113. M-burg green Wild Rose large oil lamp. Great detail and color.
114. M-BURG 9" ELECTRIC RADIUM PURPLE NESTING SWAN FLARED DEEP ROUND BOWL. UNBELIEVABLE BLUE IRID. ON AN EXCEPTIONAL BOWL.
115. M-burg 6" radium mari. Blackberry Wreath flat plate. The best one we've ever seen! Super!!!
116. M-burg pastel mari. Seacoast pin tray. This thing is gorgeous.
117. M-burg EXTREMELY RARE 9" VASELINE FLEUR-DE-LYS DOME FOOTED BOWL. THIS IS ONE HOT PIECE OF GLASS. TREMENDOUS BLUE IRID. ON VASELINE GLASS. HAS A COUPLE TYPICAL NICKS ON TOES.
118. M-burg 5" blue Peacock at Urn ICS bowl.
119. M-burg radium purple Hobstar & Feather giant rosebowl. A really super example. Scarce. VERY RARE M-burg 5" COBALT BLUE SEAWEED SAUCE. SUPER LITTLE ITEM WITH GREAT COLOR!!!
120. M-burg purple Multi Fruit & Flower punch bowl and base. Rare. Getting very hard to find.
121. The Cat's Meow M-burg Glass Factory, Millersburg, Ohio. Larry Cullen has four of these made. This is the last one.
- 122.







123. M-burg 10" radium green Peacock at Urn master ice cream. Very hard to find this in radium.
124. M-burg purple 6" Holly Whirl spade shape nappy.
125. M-burg 7" radium mari. Grape Wreath Vt. ICS bowl.
126. M-burg 5" radium green Blackberry Wreath 3/1 edge bowl. Rare.
127. M-burg 10" mari. Rosalind ruffled bowl.
128. M-burg 10" green Peacock at Urn ruffled bowl.
129. M-burg 10" purple Seaweed ruffled bowl. Scarce.
130. M-burg 8" radium green Holly Whirl ruffled bowl. Super color!
131. M-burg 10" mari. Blackberry Wreath 3/1 edge bowl.
132. M-burg 10" super radium mari. Many Stars 3/1 edge bowl. WOW!!!
133. M-burg 10" olive green Hanging Cherries MIC bowl. Very nice bowl.
134. M-burg 9 1/2" radium purple Holly Whirl ruffled bowl. Nice.
135. M-burg 9 1/2" mari. Holly Whirl ruffled bowl.
136. M-burg 8" radium purple Holly Sprig Vt. CRE bowl. Outstanding!
137. M-burg 8" light mari. Big Fish 3/1 edge bowl.
138. M-burg 5" purple Peacock at Urn ICS bowl
139. M-burg 6" radium purple Grape Wreath Vt. CRE bowl. Nice.
140. M-burg 8" radium purple Peacock at Urn proof bowl. Very Rare
141. M-burg 10" mari. Rays & Ribbons 3/1 edge bowl.
142. M-BURG 7" COBALT BLUE BLACKBERRY WREATH RUFFLED BOWL. VERY RARE SIZE FOR BLUE. VERY NICE TOO!
143. M-burg 6" radium green Holly Sprig CRE ruffled bowl. Cool piece of glass!!!
144. M-burg 9" purple Trout & Fly 3/1 edge bowl. Tad silvery.
145. M-burg 7" RADIUM PURPLE UNLETTERED MILLERSBURG COURTHOUSE BOWL. SUPER RARE AND EXTREMELY NICE! ONE OF THE HARDEST COURTHOUSE BOWLS TO FIND
146. M-burg 9" radium purple Fleur-de-lys collar base bowl. Scarce.
147. M-burg 8 1/2" stunning radium mari. Grape Wreath Vt. bowl. Beautiful!
148. M-burg 9" ELECTRIC RADIUM PURPLE MANY STARS SQUARE CRE BOWL. TREMENDOUS COLOR ON A VERY HARD TO FIND BOWL.
149. M-burg 10" green Rays & Ribbons 3/1 edge bowl.
150. M-burg 10" radium purple Fleur-de-lys CRE ruffled bowl. Very scarce and a knock-out!!!
151. M-burg 8" radium green Mayan ICS bowl. Super!
152. M-burg 8" mari. Holly Sprig Vt. CRE ruffled bowl.
153. M-burg 8" green Blackberry Wreath ruffled bowl.
154. M-burg 9" radium purple Rays & Ribbons CRE ruffled. Super blue irid.
155. M-burg 9" radium green Holly Whirl ruffled bowl.
156. M-burg 10" green Many Stars ruffled bowl. Very scarce.
157. M-burg 10" purple Many Stars ICS bowl.
158. M-burg 9" radium purple Peacock at Urn MIC. No bee, no beads.
159. M-burg 10" purple Peacock at Urn MIC, Bee, No beads.
160. M-burg 7" radium mari. Blackberry Wreath ruffled bowl.
161. M-burg 7" radium purple Blackberry Wreath ruffled bowl.
162. M-burg 6" radium purple Grape Wreath Vt. CRE ruffled bowl.
163. M-burg mari. Hanging Cherries creamer. Bruise in bottom.
164. (4) M-burg 5" radium purple Peacock at Urn berry bowls. Choice.
165. M-burg 10" purple Hanging Cherries ICS bowl. Super nice bowl!
166. M-burg purple Diamonds 8 pc. water set. Very nice.
167. (2) M-burg mari. Diamonds tumblers. 1-lot.
168. M-burg radium purple Marilyn tumbler
169. M-burg Multi Fruit & Flower punch bases - 1-mari., 1-green. Choice.
170. Rare M-burg crystal Venetian 10" whimsy vase. Made from a rosebowl.
171. Rare M-burg crystal Venetian 7" compote
172. Rare M-burg crystal Venetian 12" ice cream tray
173. Rare M-burg crystal Venetian punch bowl base. Mfg. flaw on edge.
174. RARE M-BURG CRYSTAL FLUTE PUNCH BOWL & BASE. THIS IS A BLANK TO THE SUPER RARE BIG THISTLE PUNCH BOWL. ONLY ONE WE KNOW OF.
175. M-burg crystal Feather & Heart water pitcher.
176. M-burg 9" radium purple Strawberry Wreath deep ruffled bowl. Super blue irid. on a killer bowl!
177. M-burg 9" super radium pastel mari. Peacock at Urn master berry bowl. Killer
178. M-burg 9" blue Blackberry Wreath ICS bowl. A super example of this. Getting hard to find.
179. M-burg radium purple Ohio Star vase. Tiny filled chip on base. This is nice one!
180. M-burg green Wild Rose midsize oil lamp. Crack where font attaches to base.
181. M-burg rad. mari. Strawberry Wreath compote.
182. M-burg radium green Strawberry Wreath compote. Scarce. Has chip on base.
183. M-BURG RADIUM GREEN SEACOAST PIN TRAY. THE BEST ONE WE HAVE EVER SEEN. JUST SUPER! NO PROBLEMS HERE!!!
184. M-burg green Sunflower pin tray. Another beauty. Tiny chip on back of petal...as always.
185. M-burg radium mari. Leaf & Little flowers compote. Haven't seen one of these sell in a long time.
186. M-burg 6" radium purple Blackberry Wreath ICS bowl. This thing is HOT!
187. M-burg green Hobstar & Feather giant rosebowl. Nice but does have an open bubble on one toe. Very scarce.
188. RARE M-burg RADIUM EMERALD GREEN POPPY SALVER COMPOTE. ABSOLUTELY BEAUTIFUL. TINY FLAKE ON STEM. FROM THE MARIE MCGEE COLLECTION. IT WOULD BE HARD TO FIND A BETTER ONE.
189. M-burg 9" radium purple Fleur-de-lys dome footed ICS bowl. Tiny flick on toe. Super color!
190. M-burg 9" radium pastel mari. Fleur-de-lys dome footed ICS bowl. Tiny flick on toe. Beautiful!
191. M-burg 7" radium purple Blackberry Wreath ruffled bowl
192. M-burg 10" radium green Strawberry Wreath CRE ruffled bowl. Super tough shape to find in this. NICE!

- 193. M-burg 9" radium green Holly Whirl ruffled bowl. WOW!!!
- 194. M-burg 9" dark radium mari. Nesting Swans ruffled bowl. Absolutely gorgeous!
- 195. M-burg 5" Country Kitchen opalescent square bowl
- 196. M-burg 5" Country Kitchen opalescent round bowl
- 197. M-burg 7" Country Kitchen opalescent ruffled bowl
- 198. M-burg 7" Country Kitchen opalescent round bowl
- 199. M-burg 12" crystal Ohio Star chop plate. Scarce
- 200. M-burg crystal Ohio Star Tankard. Nice!
- 201. M-burg 9" crystal Ohio Star deep bowl
- 202. M-burg crystal Ohio Star small Jelly compote
- 203. M-burg crystal Ohio Star cruet
- 204. M-burg 5" crystal Ohio Star square bowl
- 205. M-burg crystal Ohio Star water carafe
- 206. M-burg crystal Ohio Star water carafe
- 207. M-burg crystal Hobstar & Feather Lemonade pitcher. Rare size. Has small chip on collar base
- 208. M-burg crystal Hobstar & Feather biscuit jar.
- 209. M-burg crystal hobstar & feather cr/sug. spooner
- 210. M-burg crystal Potpourri salver compote
- 211. M-burg crystal Potpourri compote
- 212. M-burg crystal Country Kitchen dome ft'd bowl
- 213. 2 M-burg crystal Country Kitchen chop plates
- 214. M-burg crystal Potpourri cake stand
- 215. M-burg crystal frosted Hobstar & Feather butter dish
- 216. M-burg crystal frosted Hobstar & Feather creamer
- 217. M-burg crystal Ohio Star 11" ruffled bowl
- 218. M-burg crystal frosted Hobstar & feather 9" relish
- 219. M-burg crystal 10" frosted Hobstar & Feather 2 sides up relish
- 220. M-burg crystal 8" fosted Hobstar & Feather 2 sides up tray
- 221. M-burg crystal frosted Hobstar & Feather tankard.
- 222. M-burg crystal Ohio Star vase.
- 223. M-burg crystal Hobstar & Feather compote
- 224. M-burg 9" crystal frosted Hobstar & Feather deep bowl
- 225. M-burg 9" crystal Hobstar & Feather deep bowl
- 226. 4 M-burg 8" crystal Country Kitchen round bowls 1 money
- 227. 3 M-burg 9" crystal Country Kitchen bowls. 1 money
- 228. M-burg crystal Hobstar & Feather sugar top. Scarce part if needed!!

Abbreviations for this auction:

- M-burg-Millersburg
- CRE-Candy Ribbon Edge
- ICS-Ice Cream Shape
- Mari. - Marigold color
- Irid. - Iridescence
- MIC-master ice cream

*Thanks for participating in today's auction!!!
Please watch for the November 9th and 10th brochure!
This will be an incredible auction!
Check out updates on our website now!!!*

*Now booking for 2008!
Please call us to get your choice of dates!*

Millersburg, Ohio

