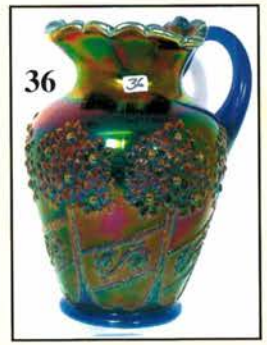
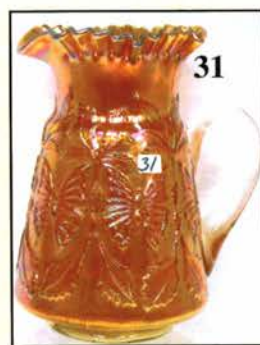
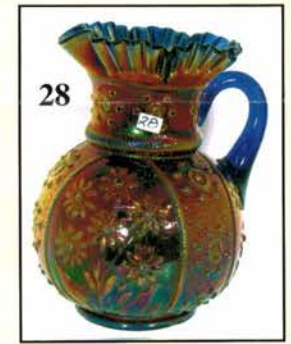
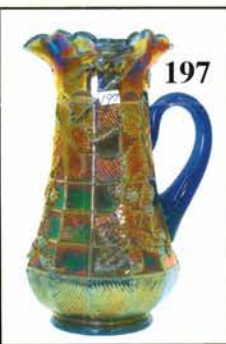
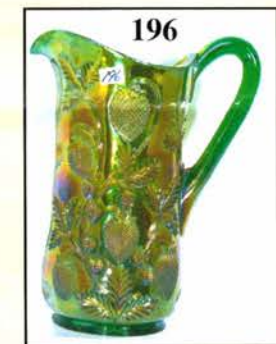
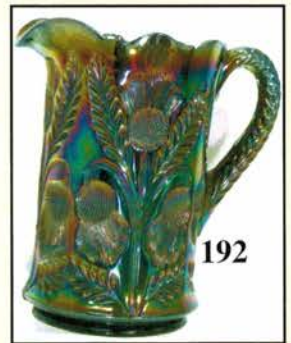
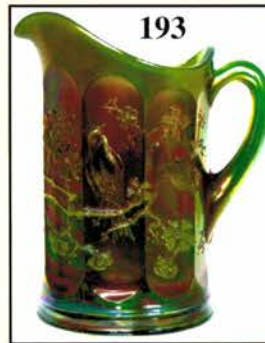
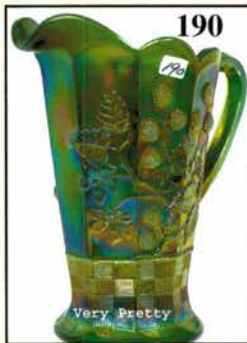
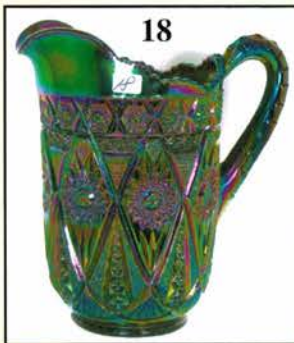


CARNIVAL GLASS AUCTION

Saturday, August 18, 2007 9:00 a.m. Sharp

Friday Preview: August 17 - 12 noon-5 pm & 7:30 a.m. Auction Day

Outstanding Collection from Alabama
John and Linda Marshall



Held By the Mickey Reichel Antique & Auction L.C.

Office: 660-882-5292 • Home: 660-882-5283

NEW WEB SITE: www.AWK-SHN.com

E-mail: mreichel@AWK-SHN.com

Held Inside the Mickey Reichel Auction Center

1 Mile North of I-70 on Hwy. 5, Exit 101, Boonville, Missouri • 20 Miles West of Columbia, MO on I-70



Preview Friday 12 p.m. - 5 p.m. and 7:30 a.m. - 9:00 a.m. Day of Auction

TERMS: Cash or Good Check, VISA and MasterCard accepted.



4% Clerking Fee on all purchases except for payment of cash or check. Proper I.D. required.

WEB SITE: www.AWK-SHN.com

ABSENTEE BID POLICY:

WRITE IN BIDS: If you are unable to attend the auction, we will be happy to accept absentee bids which must be received by THURSDAY, AUGUST 16, 2007. Don't Delay. **E-Mail: mreichel@AWK-SHN.com** ←←←←

DIRECT ALL MAIL TO: 18350 Hunters Ridge Ct., Boonville, MO 65233-2971

PLEASE NOTE: There is a **\$5 handling charge for each successful bid which will be added to the selling price** for all write-in bids. This is in addition to the cost of postage, insurance and packing. Your write-in bid will be entered just as if you are present and bidding. **Successful bidders will be notified in 1 to 3 days by the auctioneer (so be sure to include your phone number).** Direct mail bids to Auctioneer Mickey Reichel, 18350 Hunters Ridge Ct., Boonville, MO 65233-2971. Terms: Cash or Check accepted with proper I.D. and Social Security Number and References. Announcements made day of the auction supercede all printed material. Not Responsible for Accidents or Sold Items. **(Phone bids welcome Before Auction Begins.)**

No return on any items once they leave the Auction Center (No Exceptions).****

Call for additional information: 660-882-5292 days or 660-882-5283 evenings before 9:00 p.m.


FAX: 660-882-5292 (evening hours start FAX transmission after beep)

MAIL BIDS: Items are bid on in perfect condition with average or above iridescence OR as listed in the brochures. Bids will not be carried out when damage on an item has been found during the auction.

PEOPLE PRESENT AT AUCTION ARE RESPONSIBLE FOR FINDING ANY PINHEADS, WEAR, SPOTTINESS, MANUFACTURER'S DEFECTS OR ANY OTHER MINOR FLAWS, ETC. *****

NOTE: Read each line, as we have accentuated the type of no particular piece, all are special.

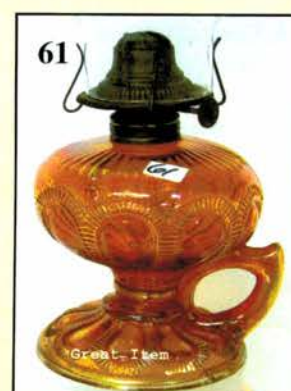
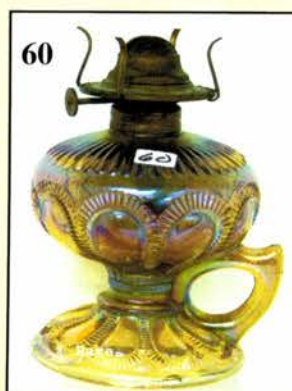
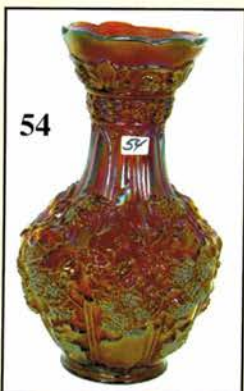
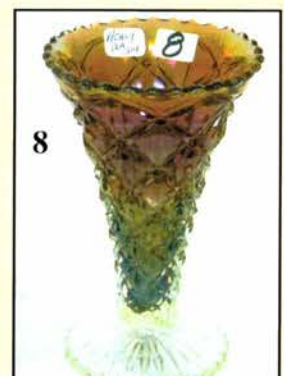
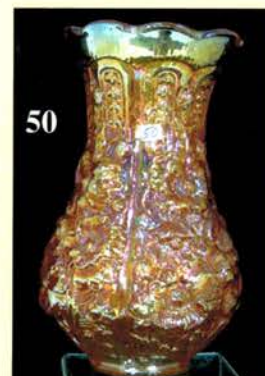
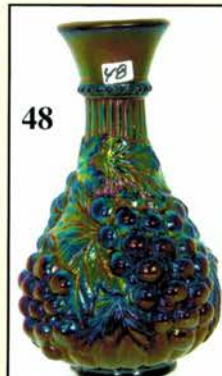
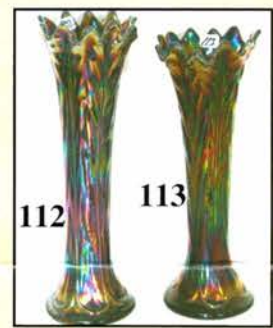
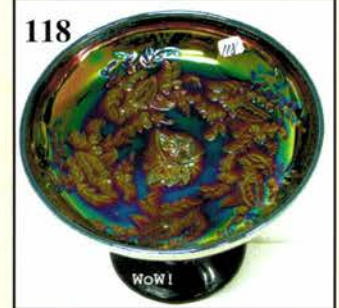
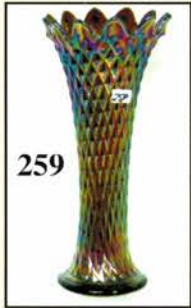
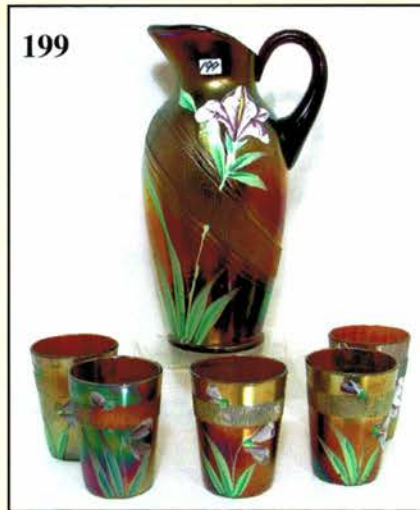
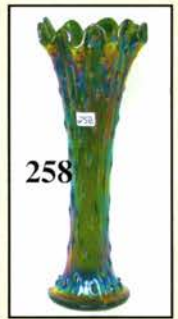
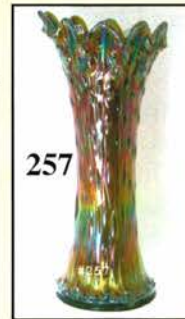
Make Reservations EARLY at one of these local motels:

Mention: Mickey Reichel Auction when calling the  Isle of Capri Casino Hotel: 660-882-1200
Days Inn: 660-882-8624 • Comfort Inn: 660-882-5317 • Super 8: 660-882-2900 • Holiday Inn: 660-882-6882

Auction Consists of Rarity, Great Irid. and Variety

- | | |
|---|---|
| _____ 1. M - 4-3/4" Morning Glory Vase - 4" Top | _____ 14. M - 13-1/4" Scarce Fenton Bullseye & Beads Vase |
| _____ 2. Smoke - 6-1/4" Morning Glory Vase | _____ 15. P - 8" April Showers Vase |
| _____ 3. M - 9-3/4" Ripple Vase - Pumpkin | _____ 16. W - 5-1/2" Squatty, Irid. Vase w/Pontil |
| _____ 4. P - 9-1/4" Ripple Vase - 3-3/8" Base - Elec. | _____ 17. Teal - 10" Corinth Vase |
| _____ 5. M - 8" J.I.P. Curled Rib Vase | _____ 18. Elec. P - Diamond Lace Water Pitcher - The Best! |
| _____ 6. Smoke - 8" J.I.P. Curled Rib Vase - Super | _____ 19. P - Diamond Lace Tumblers - A or B |
| _____ 7. P - 7-1/2" Imp. Beaded Bulls Eye Vase - 6-1/4" Top - Elec. | _____ 20. Smoke - Soda Gold Water Pitcher - Base Nick |
| _____ 8. Smoke - 5-3/4" Imp. Heavy Diamond Vase - Scarce | _____ 21. M - Imp. Luster Rose Pitcher w/5 Tumblers - <u>Dark</u> |
| _____ 9. M - 11-3/4" Plume Panels Vase - Pumpkin | _____ 22. M - Imp. Windmill Water Pitcher - Outstanding |
| _____ 10. G - 12-3/4" Plume Panels Vase - Beautiful | _____ 23. Fantastic M - 7 pc. Imp. Grape Water Set |
| _____ 11. B - 10-3/4" Plume Panels Vase - Dandy | |
| _____ 12. B - 11-1/2" April Showers Vase - Dark | |
| _____ 13. G - 12" April Showers Vase | |

- _____ 24. **Rare Elec. P - Imp. Windmill Water Pitcher - Base Chipped**
- _____ 25. P - Imp. Windmill Tumblers - A or B
- _____ 26. **Radium B - Fenton Dandelion Water Tankard**
- _____ 27. Dk. Radium - Bouquet Water Pitcher
- _____ 28. **Radium Blue - Bouquet Water Pitcher**
- _____ 29. M - Floral & Grape Water Pitcher
- _____ 30. **B - Floral & Grape Water Pitcher - WOW!**
- _____ 31. Pumpkin M - Butterfly & Fern Water Pitcher
- _____ 32. **P - Butterfly & Fern Water Pitcher - Radium**
- _____ 33. Dark M - Ftd. Orange 7 pc. Water Set - Well Matched
- _____ 34. **Blue - Spectacular Apple Tree Water Pitcher - Radium Electric**
- _____ 35. M - 8-1/4" Tall Rising Sun Water Pitcher
- _____ 36. **Super Blue - Orange Tree Orchard Pitcher**
- _____ 37. M - Thistle & Water Lily Banana Bowl
- _____ 38. **Scarce G - Thistle & Water Lily Banana Bowl**
- _____ 39. Elec. P - 5-1/2" Ruffled, Scroll Embossed Bowl - File. Ext.
- _____ 40. **Elec. P - 7-1/2" Flared, Scroll Embossed Bowl - Smooth Back**
- _____ 41. Radium P - 9" Deep, Round, Imp. Grape Bowl
- _____ 42. **Smoke - 9" Imp. Pansy Low Ruffle Plate**
- _____ 43. M - Poinsettia Milk Pitcher - Pinks
- _____ 44. **Dk. M - #374 Milk Pitcher**
- _____ 45. Smoke - Imp. Grape Compote
- _____ 46. **Elec. P - Imp. Grape Decanter**
- _____ 47. P - Imp. Grape Wines - 3 x \$
- _____ 48. **P - Imp. Grape Carafe - Elec.**
- _____ 49. M - Diamond & Sunburst Wine Decanter
- _____ 50. **WOW! M - Imp. Large Poppy Vase**
- _____ 51. Scarce P - Imp. Grape Goblet
- _____ 52. **Pumpkin M - Imp. Fashion Rosebowl**
- _____ 53. Pumpkin M - Imp. Hobstar Sugar Bowl w/ Lid
- _____ 54. **Super Amber - Logan Berry Vase**
- _____ 55. M - Rococo Vase
- _____ 56. **Smoke - Rococo Vase**
- _____ 57. Smoke - 5" Round Luster Rose Bowl - Cute
- _____ 58. **Purple - 13" Morning Glory Vase - 7-1/2" Opening - A Show Stopper**
- _____ 59. M - Imp. Mayflower Glass Gas Shade - Scarce
- _____ 60. **Smoke - 5-1/4" Zipper Loop Finger Lamp - Rare**
- _____ 61. M - 5" Zipper Loop Finger Lamp - Rare
- _____ 62. **M - 8" Zipper Loop Reg. Lamp**
- _____ 63. M - 15" Flute Under Plate w/Center Bowl - 11" Rd. Set
- _____ 64. **M - 6-1/4" Scallop Edge Pine Cone Plate**
- _____ 65. A - 6-3/4", 2 Sides Up, Blackberry Spray Hat - Scarce
- _____ 66. **Green - 6-1/2" J.I.P. CRE Blackberry Spray Hat - Glows!**
- _____ 67. B - Fenton Vintage Fernery Bowl - Int. Fractures - Elec.
- _____ 68. **Saph. - 5-1/4", 2 Row, Open Edge J.I.P. Basket - Scarce**
- _____ 69. B - Spat. Ftd. Two Flowers Ruffle Bowl
- _____ 70. **M - 5-3/4" Ftd. Persian Med. Ruffle Bowl - Really Nice**
- _____ 71. M - 7" Fenton Stippled Rays Plate
- _____ 72. **M - 6-1/2" Vintage Grape Plate - 4 Sets of Grapes - Unusual Size**
- _____ 73. Lime M & Vaseline - Goblet Shaped Holly Compote
- _____ 74. **Yellow Vas. - Ruffled Holly Compote - Fenton**
- _____ 75. Beautiful Vas. w/Marigold Overlay - 6-1/2" Blackberry Spray Hat
- _____ 76. **Rare Vas. w/M Overlay - Ruffled Sailboats Bowl**
- _____ 77. Saph. - Ruffled Sailboats Bowl - Also Rare
- _____ 78. **A - 9" Fenton Ruffled Holly Bowl - A Dandy**
- _____ 79. G - 9" Fenton Ruffled Holly Bowl
- _____ 80. **P - Spat. Ftd. Ruffled Stag & Holly Bowl w/Reddish Irid. - Neat**
- _____ 81. B - Ruffled Vine and Heart Bowl - Loaded w/Color
- _____ 82. **B - 9" Ruffled Captive Rose Bowl - Extra Nice**
- _____ 83. B - 8" CRE Heart & Vine Bowl - Different Shape
- _____ 84. **G - 8-1/2", 3 in 1 Fenton Thistle Bowl**
- _____ 85. B - 9" Ruffled Dragon and Lotus Bowl
- _____ 86. **B - 9" Ruffled Peacock and Grape Bowl**
- _____ 87. B - 9" Fenton Peacock at Urn Ruffled Bowl - Very Nice
- _____ 88. **M - 3 in 1 Stream of Hearts Compote**
- _____ 89. M - 3 in 1 Lg. Persian Med. Compote
- _____ 90. **M - Inverted Feather Parfait**
- _____ 91. Pumpkin M - Garland Rosebowl
- _____ 92. **B - Garland Rosebowl - Elec. Hilites**
- _____ 93. M - 6-1/4" Oval Wreath Cherry Bowl
- _____ 94. **P - Grape Delight Rosebowl - A Beauty**
- _____ 95. PO - 6", 8 Ruffle Wishbone & Spades Bowl - Neat
- _____ 96. **P - 9" Low, 10 Ruffle, Double Stem Rose Bowl - Super Irid.**
- _____ 97. PO - Ball Ftd. CRE Dugan Cherrys Bowl - Pl. Int.
- _____ 98. **BA - 7-7/8" Circle Scroll Vase - Top of its Class**
- _____ 99. P - 10" Lined Lattice Vase
- _____ 100. **W - 8-3/4" Lined Lattice Vase - Pastel Irid!**
- _____ 101. P - 7-1/2" Lattice and Points Vase - Great Color



- _____ 102. **Radium A - 10" Big Basketweave Vase - Awesome**
- _____ 103. M - 6" Boggy Bayou Squatty Vase
- _____ 104. **B - 6-1/2" Panelled Diamond & Bows Vase**
- _____ 105. M - Mary Ann Vase
- _____ 106. **Smoke - Rococo Vase**
- _____ 107. Pumpkin M - 7-3/4" Drapery Vase
- _____ 108. **Elec. Radium B - 7-1/4" Footed Drapery Variant Vase**
- _____ 109. G - N 9-1/2" Fine Rib Vase - Alaskan Irid.
- _____ 110. **M - 5-1/2" Squatty N Leaf Columns Vase - 3-1/2" Base, 5" Top**
- _____ 111. P - 5-1/2" Squatty N Leaf Columns Vase - 3-1/2" Base, 5" Top
- _____ 112. **P - 11" N Leaf Columns Vase - Elec.**
- _____ 113. Deep Purple - 10-1/4" N Leaf Columns Vase - Elec.
- _____ 114. **G - N Blackberry and Rays Compote**
- _____ 115. P - N Blackberry and Rays Compote - Scarce Also
- _____ 116. **AO - Hearts and Flowers Compote**
- _____ 117. M - Large Mikado Rd. Flared Compote
- _____ 118. **BA - Australian 8" Round Butterfly Bush - Magnificent Irid.**
- _____ 119. M - 9", 3 in 1, Dragon and Lotus Bowl
- _____ 120. **G - 10", 3 in 1 Peacock Tail Bowl - Neat Size**
- _____ 121. A - 8-1/2", 3 in 1 Peacock Tail Bowl - Pretty One
- _____ 122. **Dk. M - ICS Plaid Bowl**
- _____ 123. Radium G - Mlbg. Peacock Tail Vt. Compote
- _____ 124. **M - Mlbg. ICS Rays & Ribbons Bowl**
- _____ 125. P - Mlbg. ICS Rays & Ribbons Bowl
- _____ 126. **A - Radium Mlbg. 6" ICS Peacocks Bowl - 8 Tail Feathers**
- _____ 127. A - Mlbg. 3 in 1 Trout and Fly Bowl
- _____ 128. **Lg. G - Mlbg. 10-1/2" Blackberry Wreath Bowl**
- _____ 129. P - 9" N Strawberry Plate - BW Ext.
- _____ 130. **P - PCE N Strawberry Stippled Bowl**
- _____ 131. M - N Ruffled Strawberry Bowl - BW Ext.
- _____ 132. **Gingerale - PCE N Strawberry Bowl - Great Pastel**
- _____ 133. P - PCE N Strawberry Bowl - Pretty
- _____ 134. **G - Ruffle Nippon N Bowl - BW Ext. - Scarce**
- _____ 135. M - Ruffle Nippon N Bowl - BW Ext. - Nice
- _____ 136. **P - 9-1/2" PCE N Stippled Rays Bowl - Pl. Bk.**
- _____ 137. M - Persian Med. Fenton Grape and Cable Ftd. Bowl
- _____ 138. **Blue - Rare 8-1/2" Rd. Ftd. Leaf Tier Bowl - 1 Chip on Ft. Tip**
- _____ 139. Rare Blue - 5" Rd. Ftd. Leaf Tier Bowl - WOW!
- _____ 140. **IB - PCE Nippon Bowl - Rib Ext. - Nice**
- _____ 141. P - N Raspberry Gravy Bowl - Good Feet
- _____ 142. **G - N Ruffled Greek Key Bowl - BW Ext.**
- _____ 143. Purple - Sgn. Ron Hansen, Pineapple Toothpick Holder
- _____ 144. **Elec. P - Spat. Ftd. N 3 Fruits Med. Bowl**
- _____ 145. M - Spat. Ftd. N 3 Fruits Med. Bowl
- _____ 146. **Super Pastel M - Spat. Ftd. N 3 Fruits Med. Bowl - Stippled**
- _____ 147. Rich M - Spat. Ftd. N 3 Fruits Med. Bowl - Stippled
- _____ 148. **B - N Stippled Three Fruits Plate**
- _____ 149. M - N Stippled Three Fruits Plate
- _____ 150. **M - Stippled Fruits and Flowers Bonbon**
- _____ 151. BO - Non Irid. Swan Salt - Old & Scarce
- _____ 152. **Rare G - PCE Hearts/Flowers Bowl - Tip Off**
- _____ 153. B - Peacock at the Fountain, 5" Rd. Bowl
- _____ 154. **Scarce B - Large 10" Ruffled Grape & Cable Bowl**
- _____ 155. PM - PCE N Grape and Cable Bowl - Pl. Back
- _____ 156. **Purple - Stippled PCE Grape & Cable Bowl - Few Found - Ribbed**
- _____ 157. Rich M - PCE Grape & Cable Bowl - BW
- _____ 158. **Pumpkin M - Grape & Cable Bowl - BW**
- _____ 159. P - 5-3/4" Ruffled Grape & Cable Bowl
- _____ 160. **G - Stippled N Grape & Cable Plate, Rose Distilling - Great Example**
- _____ 161. Lav. - Stippled Ray N Butterfly Bonbon
- _____ 162. **Scarce G - Ruffled, Stippled, Grape & Cable Vt. Bowl**
- _____ 163. Pumpkin - N Grape & Cable Bonbon
- _____ 164. **Electric Blue - N Grape & Cable Bonbon**
- _____ 165. M - N Grape & Cable Sugar Bowl & Lid
- _____ 166. **Beautiful M - N Grape & Cable Cracker Jar**
- _____ 167. Rich M - N Grape & Cable Banana Bowl
- _____ 168. **Powder B Opal - Leaf & Beads Rosebowl - Tough Call on Color**
- _____ 169. AO - Leaf and Beads Rosebowl - M Overlay
- _____ 170. **Green - Fine Cut and Roses Rosebowl - Scarce**
- _____ 171. M - Beaded Cable & Rays Rosebowl
- _____ 172. **P - N Drapery Rosebowl - A Beauty**
- _____ 173. Scarce M - Drapery Rosebowl
- _____ 174. **AO - Drapery Rosebowl**

GREAT SELECTION OF WATER SETS AND PITCHERS

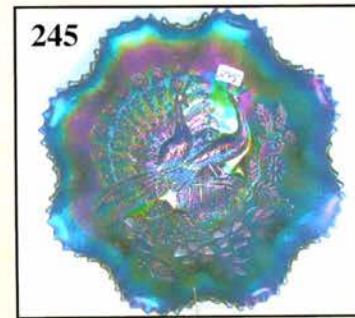
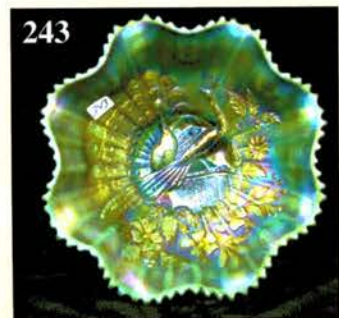
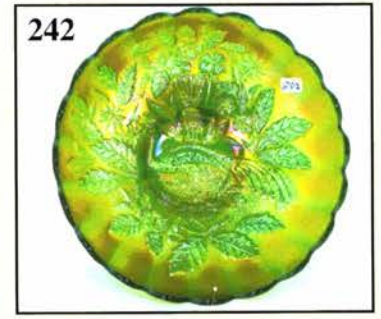
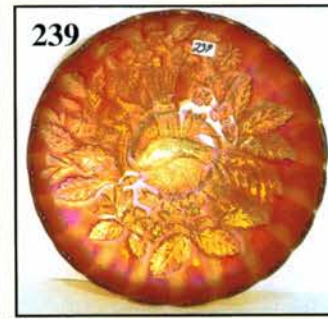
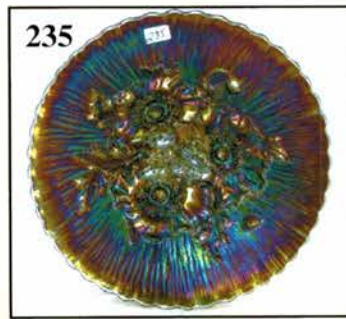
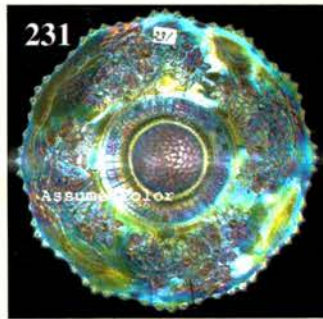
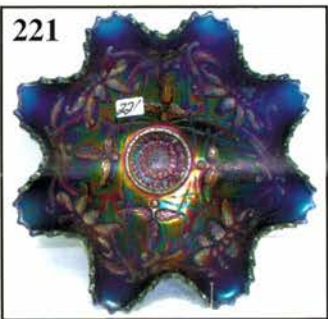
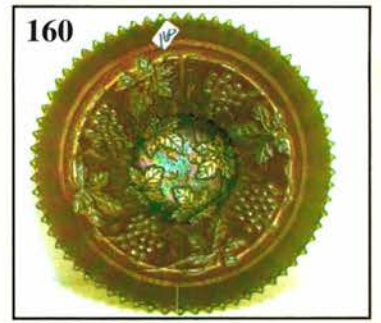
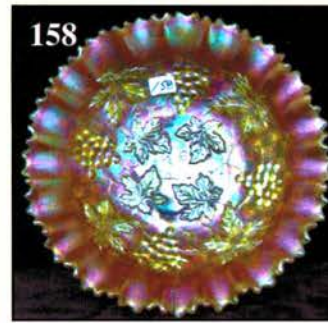
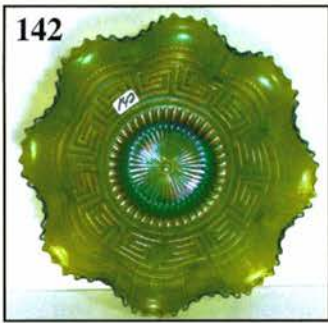
- _____ 175. Purple - N Springtime Water Pitcher
- _____ 176. **M - N Grape and Cable, 7 pc. Tankard Water Set**
- _____ 177. M - N Grape and Cable, 7 pc. Standard Water Set
- _____ 178. **Green - N Grape and Cable Water Pitcher**
- _____ 179. Purple - N Grape and Cable Water Pitcher - A Beauty
- _____ 180. **G - Mlbg. Diamonds, 7 pc. Water Set**
- _____ 181. M - Vineyard Water Pitcher - Lot of Irid.

- _____ 182. **G - Sunflower and Leaf/Beads Rosebowl**
- _____ 183. IBO - Leaf and Beads Rosebowl
- _____ 184. **P - N Dandelion Tankard Pitcher**
- _____ 185. M - N Grape Arbor, 7 pc. Tankard Set
- _____ 186. **M - N Peacock at Fountain Pitcher & 5 Tumblers - Hot Pink**
- _____ 187. Elec. P - N Peacock at Fountain Pitcher & 5 Tumblers - Int. Crack - Fantastic Color
- _____ 188. **Great M - Raspberry Milk Pitcher**
- _____ 189. G - N Raspberry Milk Pitcher - Dandy
- _____ 190. **G - N Raspberry Water Pitcher - Another Dandy**
- _____ 191. M - Springtime Water Pitcher & 5 Tumblers
- _____ 192. **P - Inverted Thistle Pitcher & 6 Tumblers - Extraordinary Find**
- _____ 193. Green - Singing Birds Water Pitcher
- _____ 194. **M - Inverted Strawberry Tankard - Very Rare - A Few Base Chips**
- _____ 195. M - Inverted Strawberry Tumblers - A or B
- _____ 196. **G - Inverted Strawberry Tankard - Another Rarity**
- _____ 196A. **Green - Inverted Strawberry Tumbler**
- _____ 197A. Green - Double Star Tankard, 7 pc. Set
- _____ 197. Blue - Blackberry Block Tankard & 5 Tumblers Set
- _____ 198. **Green - N Dandelion Tankard - Scarce Color - This One Shines**
- _____ 199. A - Banded Enameled Iris Tankard & 5 Tumblers
- _____ 200. **B - Enameled Daisy and Little Flower, 7 pc. Water Set**
- _____ 201. Lav. - Singing Birds Tumbler
- _____ 202. **IB - Grape Arbor Tumblers - A, B, C or D**
- _____ 203. P - N Oriental Poppy Tumbler
- _____ 204. **G - Double Star Tumbler**
- _____ 205. P - Dugan Peacock at Urn Tumbler

BACK TO MORE NICE BOWLS, ETC.

- _____ 206. **P.O. - 3 in 1 Dragon & Lotus Bowl - Super**
- _____ 207. P.O. - ICS Fanciful Bowl - 8-1/2"
- _____ 208. **P.O. - Ruffled 8-3/4" Peacock & Grape Bowl - Impressive**
- _____ 209. G - 7-1/4" Wild Rose Bowl
- _____ 210. **M - 7-1/4" Wild Rose Bowl - Pumpkin**
- _____ 211. P - 7-1/4" Wild Rose Bowl
- _____ 212. **Elec. B - 7-1/4" Wild Rose Bowl - Rare Beauty**
- _____ 213. P - Wild Rose Nut Bowl
- _____ 214. **G - Wild Rose Nut Bowl**
- _____ 215. M - Wild Rose Nut Bowl - Real Nice
- _____ 216. **G - Round Bushel Basket - Tough To Find**
- _____ 217. B - Round Bushel Basket - Electric
- _____ 218. **M - Round Bushel Basket - Radium Pumpkin**
- _____ 219. IB - 8 Sided Bushel Basket - Nice Pastel
- _____ 220. **AO - Round Bushel Basket - Lots of Opal**
- _____ 221. Scarce Blue - Ftd. N Wishbone Bowl

- _____ 222. **Rare M - Ftd. N Wishbone Plate - Rich Color - Seldom Offered**
- _____ 223. AO - Dandelion Mug - Old Favorite
- _____ 224. **Rare G - Buzz Saw, Large Cruet - Stopper Chip, But It's There**
- _____ 225. G - Inverted Strawberry Powder Jar w/Lid
- _____ 226. **M - Inverted Strawberry Powder Jar**
- _____ 227. Rare M - Inverted Strawberry Giant Compote - 9" Rd.
- _____ 228. **Green - Pair of Inverted Strawberry Candlesticks - Normal Base Nicks - Great Find**
- _____ 229. B - Poppy Pickle Dish
- _____ 230. **Scarce G - Poppy Pickle Dish**
- _____ 231. Awesome White - Orange Tree Plate
- _____ 232. **Dk. M - Poinsettia Ftd. Bowl - WOW!**
- _____ 233. Show Stopper Electric Purple - Sunflower Leaf Beads Rare Nut Bowl
- _____ 234. **PO - 11-1/4" Dugan Heavy Web Ruffle Bowl - Round - Fantastic Find**
- _____ 235. Very Nice Scarce Purple - N Poppy Show Plate
- _____ 236. **Elec. B - N 5-1/4" ICS Peacock at Urn Bowl**
- _____ 237. B - N 5-1/2" ICS Peacock at Urn Bowl
- _____ 238. **Elec. P - N 5-1/2" ICS Peacock at Urn Bowl**
- _____ 239. Pumpkin M - N Large Peacock at Urn Bowl
- _____ 240. **M - 5-7/8" N Peacock at Urn Bowl**
- _____ 241. Soft M - 5-3/8" N Peacock at Urn Bowl
- _____ 242. **Rare G - N Large Peacock at Urn Bowl - Not Many Out There**
- _____ 243. Pastel AO - N Ruffled Peacocks Bowl - Super - Always in Demand
- _____ 244. **Beautiful M - N Ruffled Peacocks Bowl**
- _____ 245. Elec. B - N Ruffled Peacocks Bowl - WOW!
- _____ 246. **Great M - N Flat Peacocks Plate**
- _____ 247. W - N Peacocks Plate - Lots of Blue Irid.
- _____ 248. **Blue - Stippled Peacocks Plate - Elec. Hi-Lights**
- _____ 249. AO - Rose Show Bowl - Pastel Beauty
- _____ 250. **Purple - PCE Good Luck Bowl - Rib Back - Got One? - Overlooked Color**
- _____ 251. Fantastic P - Homestead Chop Plate - No Upgrades Here
- _____ 252. **Amber - 11-1/4" Imp. Heavy Grape Chop Plate**
- _____ 253. G - Ftd. Ruffled Horse Medallion Bowl - Great Pattern
- _____ 254. **Elec. P - 11" Imp. Heavy Grape Chop Plate - WOW!**
- _____ 255. M - 18" Ripple Funeral Vase - 7" Fan Top, 4-1/2" Base - Big Beauty
- _____ 256. **B - 19-1/2" Rustic Funeral Vase - 8" Opening, 5-1/2" Base**
- _____ 257. G - 12-7/8" Mid Size Tree Trunk Vase - Impressive



- _____ 258. **Green - 11" Tree Trunk Vase Dripping w/ Radium Irid.**
- _____ 259. P - 10-1/2" N Diamond Point Vase - Elegant Multi Radium
- _____ 260. **Rare M - 9-1/4" Jester Cap N Vase - Thin Rib**
- _____ 261. Radium P - 9", 4 Pillars Vase - 3-7/8" Base, 31 Pt. Star - Mlbg.????
- _____ 262. **AO - N 4 Pillars Vase - Lovely One**
- _____ 263. G - Mlbg. 9-3/4" Ruffled Fleur de Lis Bowl - Radium Collar Base
- _____ 264. **M - Mlbg. 9-3/4", 3 in 1 Many Stars Radium, 6 Pt. Star Bowl**
- _____ 265. M - Mlbg. 9-1/2" Ruffled Nesting Swan Bowl - Radium Blues
- _____ 266. **Satin G - Mlbg. 9-3/4" Ruffled Nesting Swan Bowl - Dandy**
- _____ 267. Radium G - Mlbg. 9-1/2" Ruffled Nesting Swan Bowl
- _____ 268. **M - Mlbg. 10", 3 in 1 Rays & Ribbons Bowl - Scarce & Radium**
- _____ 269. G - Mlbg. 10", 6 Ruffle, w/5 pt. Star Bowl - Scarce Radium
- _____ 270. **RM - Mlbg. 9-1/2" Ruffled Radium Nesting Swan Bowl**
- _____ 271. P - Mlbg. 9-1/2" Ruffled Radium Nesting Swan Bowl
- _____ 272. **M - Mlbg. 8-3/4", 3 in 1 Trout & Fly Bowl**
- _____ 273. M - Mlbg. 8-1/2", 3 in 1 Big Fish Bowl - Radium
- _____ 274. **Radium P - Mlbg. 8-3/4" Ruffled Cherries Bowl**
- _____ 275. G - Mlbg. Sea Coast Pin Tray - Hard to Find
- _____ 276. **Radium M - Mlbg. 9" CRE Holly Sprig Bowl**
- _____ 277. Radium M - Mlbg. 10" Square Grape Wreath Bowl - 4 Pt. Stars & Bars - Rare
- _____ 278. **Radium M - Mlbg. 7-3/4" ICS Grape Wreath w/8 pt. Star Bowl**
- _____ 279. Radium G - Mlbg. Card Tray Bonbon - Holly Sprig
- _____ 280. **Satin M - Mlbg. 7" ICS Blackberry Wreath Bowl**
- _____ 281. Radium M - Mlbg. 9" Tri-Corner Grape Wreath Bowl - 4 Pt. Star & Bars
- _____ 282. **Radium M - Mlbg. 9" Tri-Corner Whirling Leaves Bowl**
- _____ 283. Pumpkin M - 3 in 1 Concord Bowl - WOW!
- _____ 284. **Scarce & Nice Green - Ruffled Concord Bowl**
- _____ 285. Blue - 8 Ruffle Peacock & Grape Bowl
- _____ 286. **Dk. M - 3 in 1 Dragon & Lotus Bowl**
- _____ 287. A - 10-1/4", 6 Ruffle Smooth Edge Little Flowers Bowl - Smooth Edge
- _____ 288. **Radium B - 9" Orange Tree Plate - A Looker - Different Effect**
- _____ 289. PO - 7" Garden Path Vt. Plate - Rare Dandy
- _____ 290. **G - N Grape & Cable, Turned In Center, PC Bowl - Neat**
- _____ 291. Pastel AO - Fruits & Flowers Bonbon
- _____ 292. **AO - Leaf Beads Rosebowl**
- _____ 293. Awesome M - 6-1/2", 4 Sides Up, Little Flowers Plate
- _____ 294. **B - 5" Persian Medallion Rd. Bowl - Multi Elec.**
- _____ 295. B - 5" Persian Medallion Rd. Bowl - Neat
- _____ 296. **Dk. M - Persian Medallion Grape/Cable, Ftd. Fruit Bowl**
- _____ 297. M - N Rose Show Bowl - Elegant & Nice
- _____ 298. **Rare Powder B - Kittens Cereal Bowl - Marie Chip**
- _____ 299. Blue - 6-1/4" Blackberry Spray Ruffle Hat - Super
- _____ 300. **G - 9" N Grape & Cable Plate - Smooth Bk. - Tip Off**
- _____ 301. P - 11" Grape & Cable Lg. Ruffle Bowl
- _____ 302. **B - 9", 8 Ruffle Little Flowers Bowl**
- _____ 303. Smoke - 8-1/2" Dia. Rings Bowl - Radium
- _____ 304. **B - 2-Row, JIP, O.E. Basket**
- _____ 305. P - 8-1/4" N Tri-Corner Sunflower Leaf Beads Bowl - Scarce
- _____ 306. **A - Radium, Mirror Finish - 9", 3 in 1 Crimp Double Stem Roses Bowl**
- _____ 307. Scarce Green - Spat. Ftd. 8", ICS Stag and Holly Bowl
- _____ 308. **Great Aqua - 7-1/2", 8 Ruffle Fenton Acorns Bowl**
- _____ 309. Radium, Beautiful Lime Vaseline - Rare Fenton Holly Nut Bowl - 1st I've Sold
- _____ 310. **Powder B - Lotus & Grape Card Tray Bonbon - Tooth Chip**
- _____ 311. Ice Blue - Ruffled Hearts & Flowers Bowl - One of the Best
- _____ 312. **Great M - PCE Good Luck Bowl**
- _____ 313. Pumpkin M - Master Panthers, Lg. Ftd. Bowl
- _____ 314. **M - CRE, Tri-Corner Flowering Dill Hat - Outstanding One**

**ITEMS WITH OUTSTANDING COLOR -
ALL HAVE SOME DAMAGE -
BUT A CHANCE TO SAVE
AND YET OWN BEAUTY**

- _____ 315. Smoke - 10" Rd. Flared Imp. Grape Bowl
- _____ 316. **Smoke - 9" Round Flared Imp. Grape Bowl - Base Flake**
- _____ 317. Clam - 9-1/2" Double Dutch Bowl - Nick Ft.
- _____ 318. **Smoke - 8" Windmill - Marie Nick**
- _____ 319. P - 8" Windmill Bowl - Light Wear
- _____ 320. **P - 9" Diamond Rings Bowl - Center Light Wear**

- _____ 321. P - Double Dutch Bowl - Ft. Nick (So?)
 _____ **322. G - Helios - Imp. Grape 9" Plate - Marie Nick**
 _____ 323. Lime Vaseline - Double Dutch Ftd. Bowl - Ft. Chip
 _____ **324. Helios G - Ruffled Shell & Sand Bowl**
 _____ 325. P - Ruffled Shell & Sand Bowl - Tip Nick
 _____ **326. P - Cobblestone Bowl - Rim Nick - Electric**
 _____ 327. M - Acanthus - 10" Chop Plate - Rim Nick
 _____ **328. Helios G - Scroll & Embossed Plate - Tip Chip**
 _____ 329. Outstanding M - Open Rose 9" Plate - Marie Chip
 _____ **330. Amber - Open Rose 9" Plate - Marie Chip**
 _____ 331. Amber - 8-1/2" Luster Rose Bowl
 _____ **332. Purple - 7-3/4" Luster Rose Bowl**
 _____ 333. Elec. P - 8-3/4" Pansy Bowl - Marie Chip
 _____ **334. Elec. P. - Imp. Grape Carafe - Base Chipped**
 _____ 335. Smoke - 9", 3 in 1 Pattern Bowl
 _____ **336. Pastel M - Rose Show Plate - Rim Chip**
 _____ 337. Dk. M - Rose Show Plate - Rim Broke Off
 _____ **338. AO - Rose Show Bowl - Marie Chip - Still A Dandy**
 _____ 339. IB - Rose Show Bowl - Rim Chip
 _____ **340. W - Nippon Ruffled BW Bowl - Tip Off**
 _____ 341. IB - Emb. Mums Bowl - Tip Off
 _____ **342. B - Emb. Mums Bowl - Tip Off**
 _____ 343. Elec. B - Emb. Mums Bowl - Tip Off
 _____ **344. P - Ftd. Poinsettia Bowl - Tip Off**
 _____ 345. Elec. Purple - 3 Fruits Bowl - Tip Off
 _____ **346. AO - Collar Base, 3 Fruits Bowl - Tip Off**
 _____ 347. P - Collar Base, 3 Fruits Bowl - Tip Off
 _____ **348. Elec. Purple - Stippled 3 Fruits Bowl - Tip Off**
 _____ 349. Pumpkin M - Ruffled Good Luck Bowl - WOW!
 _____ **350. Pumpkin M - Stippled Ruffle Good Luck Bowl - Tip Off**
 _____ 351. Rich M - Stippled Peacocks Bowl - Tip Off
 _____ **352. B - N Stippled Strawberry Bowl - Ruffled - Tip Off**
 _____ 353. Lav. - N Stippled PCE Bowl - Tip Off
 _____ **354. B - Apple Blossom 8-3/4" Plate - Tip Off**
 _____ 355. BA - 4 Flowers VT. Lg. Ruffle Plate - Tip Off
 _____ **356. Super P - 9" N Strawberry Plate - Tip Off**
 _____ 357. M - Stippled 3 Fruits Bowl - Tip Off
 _____ **358. M - Nippon Bowl - Tip Off**
 _____ 359. M - Nippon Bowl - Tip Off
 _____ **360. G - 9" Imp. Grape Plate - Tip Off**
 _____ 361. P - Scroll Embossed Plate - Tip Off
 _____ **362. P - Scroll Embossed Plate - Star Base - Tip Off**
 _____ 363. Pretty G - Pansy Ruffled Bowl - Rim Nick
 _____ **364. Elec. P - 7-1/4" Rd., Ftd., Luster Rose Bowl - Rose Nick**
 _____ 365. M - Ftd. N Raspberry Bowl - Ftd. Chip
 _____ **366. Smoke - 9-1/2" Ftd. Double Dutch Bowl - Rim Chip**
 _____ 367. P - 8-3/4" Grape & Cable Bowl - Tooth Chip
 _____ **368. M - Low Ruffle Fanciful Bowl - Rim Pts.**
 _____ 369. M - Sunflower Bowl - Tip Off
 _____ **370. P - Three Fruits Med. Bowl - Tip Off**
 _____ 371. G - Scroll Embossed Ruffle Bowl - Chipped Tip on Back
 _____ **372. Smoke - 11-1/2" Ftd. Center Pc. Luster Rose Bowl - Chip on Bk.**
 _____ 373. Green - Ruffle Imp. Grape Bowl - Base Chip
 _____ **374. Amber - Luster Rose - Rosebowl - Bubble on Base**
 _____ 375. Purple - Star of David Bowl - Elec. - Edge Off
 _____ **376. Clam - Imp. Grape Ruffle Bowl - Rim Chip**
 _____ 377. Purple - Rd. Lg. Heavy Grape Bowl - Rim Chip

SPECIAL NOTE:

NO SUNDAY CALLS, PLEASE!

Winning Absentee Bidders will be contacted Monday through Wednesday of the week following the Auction!

Thank You!

SEND ALL MAIL TO:

18350 Hunters Ridge Ct.
 Boonville, MO 65233

👉 AUCTION CALENDAR OF EVENTS

Sept. 15, 9 am - Carnival Glass at Boonville
 October 20, 9 am - Carnival Glass at Boonville
 Nov. 17, 9 am - Carnival Glass at Boonville
 January 12, 2008, 9 am at Boonville
 17th Annual New Years Extravaganza

👉 Call Today To Sell Your Fine Items
 660-882-5292 Day
 660-882-5283 Evening

WATCH: 👉 Web Site: www.AWK-SHN.com

www.AWK-SHN.com
MICKEY REICHEL
ANTIQUE & AUCTION, L.C.
18350 HUNTERS RIDGE CT.
BOONVILLE, MO 65233

PRESORTED
FIRST CLASS MAIL
US POSTAGE PAID
SEDALIA, MO
PERMIT 217

FIRST CLASS MAIL
SPECIAL INVITATION TO:

RETURN SERVICE REQUESTED

200



8*1*****MIXED AADC 650

LEE MARKLEY

PO BOX 306

MENTONE, IN 46539-0306



124



126



127



156



281



264



272



277



273



251



227



290

