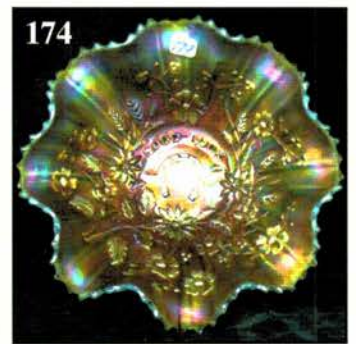
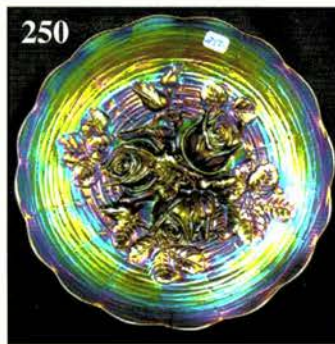
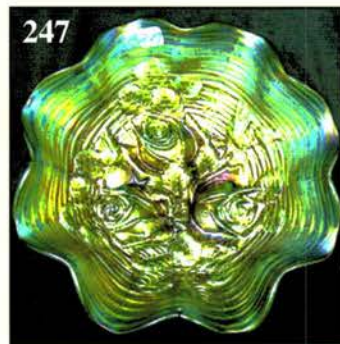
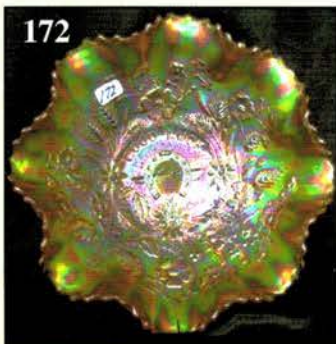
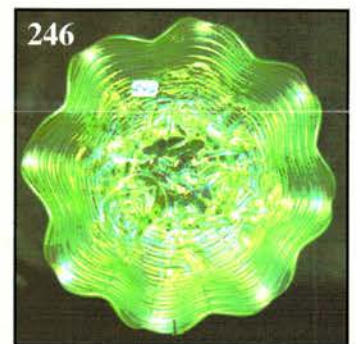
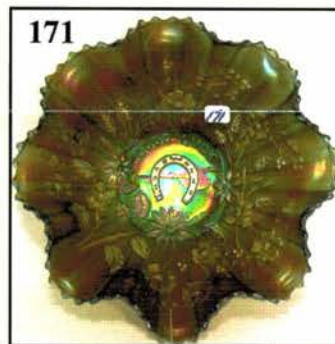
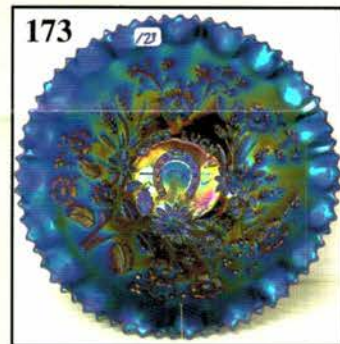
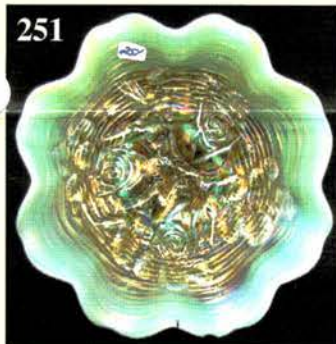
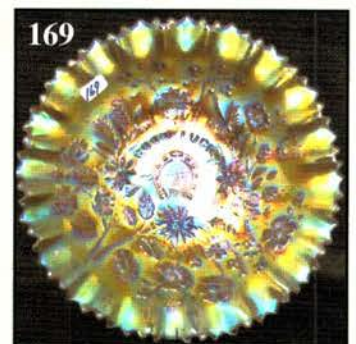
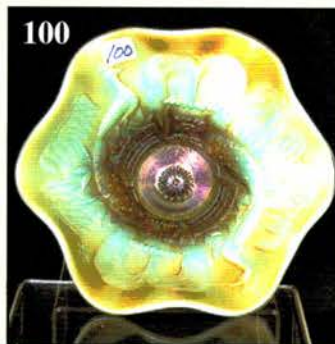
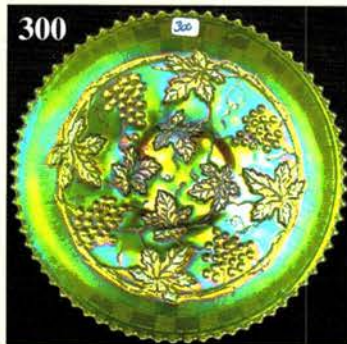


# CARNIVAL GLASS AUCTION

Saturday, June 16, 2007 9:00 a.m. Sharp

Friday Preview: June 15 - 12 noon-5 pm & 7:30 a.m. Auction Day

## Mitchell and Hobart Collection



Held By the Mickey Reichel Antique & Auction L.C.

Office: 660-882-5292 • Home: 660-882-5283

NEW WEB SITE: [www.AWK-SHN.com](http://www.AWK-SHN.com)

E-mail: [mreichel@AWK-SHN.com](mailto:mreichel@AWK-SHN.com)

# Held Inside the Mickey Reichel Auction Center

1 Mile North of I-70 on Hwy. 5, Exit 101, Boonville, Missouri • 20 Miles West of Columbia, MO on I-70



Preview Friday 12 p.m. - 5 p.m. and 7:30 a.m. - 9:00 a.m. Day of Auction

**TERMS:** Cash or Good Check, VISA and MasterCard accepted.



4% Clerking Fee on all purchases except for payment of cash or check. Proper I.D. required.

**WEB SITE: [www.AWK-SHN.com](http://www.AWK-SHN.com)**

## ABSENTEE BID POLICY:

**WRITE IN BIDS:** If you are unable to attend the auction, we will be happy to accept absentee bids which must be received by THURSDAY, JUNE 14, 2007. Don't Delay. **E-Mail: [mreichel@AWK.SHN.com](mailto:mreichel@AWK.SHN.com)** ←←←←

**DIRECT ALL MAIL TO: 18350 Hunters Ridge Ct., Boonville, MO 65233-2971**

**PLEASE NOTE:** There is a **\$5 handling charge for each successful bid which will be added to the selling price** for all write-in bids. This is in addition to the cost of postage, insurance and packing. Your write-in bid will be entered just as if you are present and bidding. **Successful bidders will be notified in 1 to 3 days by the auctioneer (so be sure to include your phone number).** Direct mail bids to Auctioneer Mickey Reichel, 18350 Hunters Ridge Ct., Boonville, MO 65233-2971. Terms: Cash or Check accepted with proper I.D. and Social Security Number and References. Announcements made day of the auction supercede all printed material. Not Responsible for Accidents or Sold Items. (Phone bids welcome **Before Auction Begins.**)

**No return on any items once they leave the Auction Center (No Exceptions).\*\*\*\***

Call for additional information: 660-882-5292 days or 660-882-5283 evenings before 9:00 p.m.


**FAX: 660-882-5292 (evening hours start FAX transmission after beep)**

**MAIL BIDS:** Items are bid on in perfect condition with average or above iridescence OR as listed in the brochures. Bids will not be carried out when damage on an item has been found during the auction.

**PEOPLE PRESENT AT AUCTION ARE RESPONSIBLE FOR FINDING ANY PINHEADS, WEAR, SPOTTINESS, MANUFACTURER'S DEFECTS OR ANY OTHER MINOR FLAWS, ETC. \*\*\*\*\***

**NOTE: Read each line, as we have accentuated the type of no particular piece, all are special.**

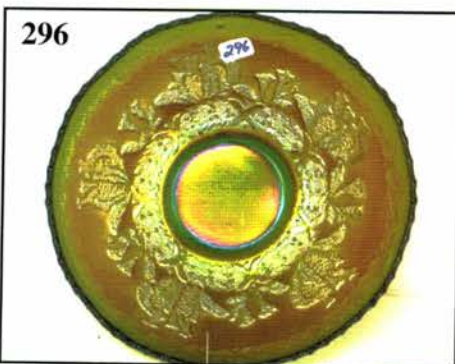
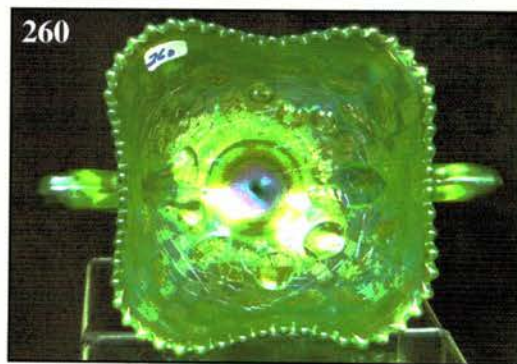
**Make Reservations EARLY at one of these local motels:**

Mention: Mickey Reichel Auction when calling the  Isle of Capri Casino Hotel: 660-882-1200  
Days Inn: 660-882-8624 • Comfort Inn: 660-882-5317 • Super 8: 660-882-2900 • Holiday Inn: 660-882-6882

## **Auction Consists of Rarity, Great Irid. and Variety**

- |  |  |
|--|--|
| _____ 1. P - 10" April Showers Vase (Nick on Top)                            | _____ 14. M - 10-3/4" Beauty Bud Vase  |
| _____ 2. M - 6-1/2" Standard Vase  | _____ 15. G. Opal - 10-1/2" Feathers Vase - Non Irid   |
| _____ 3. M - 9" CRE Knotted Beads Vase                                       | _____ 16. W. Opal - <u>N</u> 10-1/2" Diamond Pts. Vase - Non Irid                                  |
| _____ 4. G - 9-3/4" Diamond/Rib Vase   | _____ 17. W. Opal - <u>N</u> 10-3/4" Diamond Pts. Vase - Non Irid                                  |
| _____ 5. P - 10" Diamond/Rib Vase  | _____ 18. Aqua Opal - 9-1/2" <u>N</u> Diamond Pts. Vase - Loaded with Opal - The best of the best! |
| _____ 6. P - 10" Long Thumbprint Vase  | _____ 19. W - 10-1/2" <u>N</u> Diamond Pts. Vase - Top of the Line                                 |
| _____ 7. Dk. B - 10" Fenton Fine Rib Vase                                    | _____ 20. M - 4-1/4" Rococco Vase - Very Desirable   |
| _____ 8. Dk. B - 16-1/4" Fenton Fine Rib Vase                                | _____ 21. M - Ftd. Orange Tree, 7 pc. Water Set - Scarce Beauty                                    |
| _____ 9. G - 10-1/2" Fenton Fine Rib Vase                                    | _____ 22. Rich M - Tree Bark, 8 pc. Lemonade Set w/Reeded Handle - First I've Seen                 |
| _____ 10. P - 8-3/4" Rippled Vase, 3-3/8" Base, 5-1/2" Opening (Nick on Top) |  |
| _____ 11. A - 8-1/2" W.M. Cocave Flute Vase                                  |  |
| _____ 12. Exceptional A - 8-1/2" Twigs Vase                                  |  |
| _____ 13. Rich M - 5-1/2" Miniature Morning Glory Vase w/4" Opening          |  |

- \_\_\_\_\_ 23. Spectacular M - Imperial Grape 7 pc. Water Set
- \_\_\_\_\_ 24. **M - Fashion 7 pc. Water Set - Old Standby**
- \_\_\_\_\_ 25. M - 8" Tall Octagon Pitcher w/6 Tumblers
- \_\_\_\_\_ 26. **Super M - Octagon Wine 7 pc. Set - Scarce**
- \_\_\_\_\_ 27. M - 10-3/4" Ftd. Sq. 8 Ruffle Stag/Holly Bowl
- \_\_\_\_\_ 28. **M - 9-1/2" Ball Ftd. Deep Stag/Holly Fruit Bowl - Just Beautiful**
- \_\_\_\_\_ 29. A - N Ruffled Rainbow Compote
- \_\_\_\_\_ 30. **G - Ruffled Scottish Thistle Compote**
- \_\_\_\_\_ 31. P - N Ruffled Daisy/Plume Compote
- \_\_\_\_\_ 32. **G - Peacock Tail Ruffled Compote**
- \_\_\_\_\_ 33. M - Question Mark Handled Compote
- \_\_\_\_\_ 34. **Rare B - Handled Compote Bonbon**
- \_\_\_\_\_ 35. M - Imperial Ruffled Compote
- \_\_\_\_\_ 36. **W - Constellation Ruffled Compote - Extra Nice**
- \_\_\_\_\_ 37. M - Round Puzzle Stemmed Bonbon
- \_\_\_\_\_ 38. **B - Two Fruits Divided Bonbon - Quite Scarce**
- \_\_\_\_\_ 39. M - 4-1/2" N Lustre Flute Hat
- \_\_\_\_\_ 40. **Deep P - 4-1/2" N Lustre Flute Hat**
- \_\_\_\_\_ 41. M - Banded Blackberry Ruffled Hat
- \_\_\_\_\_ 42. **B - Fenton Ruffled French Knots Hat - Neat Pattern**
- \_\_\_\_\_ 43. M - 7" Ruffled Fenton Vintage Grape Bowl
- \_\_\_\_\_ 44. **Rich M - 6" Ruffled Sailboats Bowl**
- \_\_\_\_\_ 45. B - 6" Ruffled Cherry Chain Bowl
- \_\_\_\_\_ 46. **A - 6-3/4" Ruffled Peacock Tail Bowl**
- \_\_\_\_\_ 47. M - 8" Fenton Grape/Cable Ruffled Bowl
- \_\_\_\_\_ 48. **B - Fenton, Vintage Fernery Bowl**
- \_\_\_\_\_ 49. M - 8-1/2" I.C.S. Spat. Ftd. Fenton Grape/Cable Bowl - Scarce Shape
- \_\_\_\_\_ 50. **Red - O.E., 2 Sides Up 6" Basket**
- \_\_\_\_\_ 51. Dk. M - 5-1/2", O.E. Blackberry Basket
- \_\_\_\_\_ 52. **Red Amberina - 6-3/4" O.E. Blackberry Basket**
- \_\_\_\_\_ 53. M - Adv. Millers Furniture O.E. Basket w/2 Sides Up
- \_\_\_\_\_ 54. **Beautiful M - 8-1/2" Round Fenton Holly Bowl - Pretty**
- \_\_\_\_\_ 55. B - 8-1/2" Rnd. Fenton Holly Bowl (Faded Irid.)
- \_\_\_\_\_ 56. **W - 9-1/2" Fenton Holly Plate**
- \_\_\_\_\_ 57. B - 8-3/4", 3/1 Fenton Vintage Grape Bowl
- \_\_\_\_\_ 58. **Dk. A - 10", 3/1 Fenton Vintage Grape Bowl (Scarce)**
- \_\_\_\_\_ 59. G - 8-1/2", 3/1 Edge Fenton Vintage Grape Bowl - Seldom Seen
- \_\_\_\_\_ 60. **Deep A - 7-1/2" ICS Fenton Vintage Grape Bowl - Neat Shape**
- \_\_\_\_\_ 61. Scarce A - 8-3/4" Ruffled Captive Rose Bowl - Very Impressive
- \_\_\_\_\_ 62. **Green - 9-1/4" Captive Rose Plate - Seldom Offered**
- \_\_\_\_\_ 63. B - 3-1/4" Orange Tree Mugs - A, B or C
- \_\_\_\_\_ 64. **B - Orange Tree Hat Pin Holder**
- \_\_\_\_\_ 65. B - 9-3/8" Orange Tree Plate - Multi Electric - Favorite of Many
- \_\_\_\_\_ 66. **Stunning M - 9-1/2" Orange Tree Plate - Loaded w/Blues & Pinks**
- \_\_\_\_\_ 67. B - Orange Tree Powder Jar w/lid
- \_\_\_\_\_ 68. **Scarce A - 9" Flared Orange Tree Plate?/Bowl? (1-7/8" Tall)**
- \_\_\_\_\_ 69. G - 8-1/2", 3/1 Edge Fenton Thistle Bowl
- \_\_\_\_\_ 70. **Dk. G - 7-3/4" Spat. Ftd. Peacock/Grape Ruffled Bowl**
- \_\_\_\_\_ 71. M - 7-3/4" ICS Dragon/Lotus - Rim Chip
- \_\_\_\_\_ 72. **Rich M - 7" Ruffled Horse Medallion Bowl w/Collar Base**
- \_\_\_\_\_ 73. M - Ball Ftd. 7" Horse Medallion Nut Bowl
- \_\_\_\_\_ 74. **Scarce A - 9-1/4" Fenton, 3 Fruits Plate**
- \_\_\_\_\_ 75. B - 9-1/4" Fenton, 3 Fruits Plate w/Minor Wear
- \_\_\_\_\_ 76. **Dk. B - Persian Medallion Bonbon**
- \_\_\_\_\_ 77. Soft B - Persian Medallion Bonbon
- \_\_\_\_\_ 78. **Dk. M - Persian Medallion Bonbon**
- \_\_\_\_\_ 79. M - Persian Medallion Card Tray Bonbon
- \_\_\_\_\_ 80. **G - N Butterfly Bonbon - Emerald Hilites**
- \_\_\_\_\_ 81. Spectacular M - 9" Windflower Plate w/Pretty Blues & Pinks
- \_\_\_\_\_ 82. **WHITE - N 9" Embroidered 9 Mums Plate - Classic Rarity (Seen One)**
- \_\_\_\_\_ 83. Moonstone - 8-1/2" Westmoreland Scales Plate - Few Known
- \_\_\_\_\_ 84. **Peach Opal - Fenton 9", 3/1 Edge Peacock/Grape Bowl - Award Winner**
- \_\_\_\_\_ 85. Great Peach Opal - 8-3/4" Sq., 8 Ruffle Peacock/Grape Bowl - Another Rarity
- \_\_\_\_\_ 86. **PO - 8-3/4", 8 Ruffle Dragon/Lotus Bowl - Spectacular**
- \_\_\_\_\_ 87. Rich M - Kittens Card Tray Plate
- \_\_\_\_\_ 88. **Pastel Bluish Base - Kittens Card Tray w/Marigold Overlay**
- \_\_\_\_\_ 89. M - 2-1/4" Tall, Pr. of Kittens Vase (or Toothpick Holder)
- \_\_\_\_\_ 90. **Scarce B - 6 Ruffled Kittens Bowl**
- \_\_\_\_\_ 91. M - 4 Ruffle Kittens Bowl (2 Sets of Kittens)
- \_\_\_\_\_ 92. **Scarce P - Swan Salt - Multi Electric**
- \_\_\_\_\_ 93. Soft M - 8-3/4" Ruffled, N Stippled 3 Fruits Bowl - Always in Demand
- \_\_\_\_\_ 94. **G - Small Cambridge Buzz Saw Perfume Jar w/Stopper - Unique Find**
- \_\_\_\_\_ 95. B - 8-3/4" Ruffled Peacock/Grape Plate
- \_\_\_\_\_ 96. **G - Flat 9" Ftd. Peacock/Grape Plate - Always a Hit**
- \_\_\_\_\_ 97. A - 9-1/2" Stippled Rays Fenton Ruffled Bowl
- \_\_\_\_\_ 98. **Frosty W - 11-3/4" ICS Persian Garden Bowl - Nice Pastels**
- \_\_\_\_\_ 99. P - Imperial Ruffled 9" Pansy Bowl - Radium Elec.
- \_\_\_\_\_ 100. **Aqua Opal - N Peacock/Fountain Compote - Incredibly Hard to Come By - Rarity**



- \_\_\_\_\_ 101. Elec. P - 9" N Grape/Cable Plate w/Smooth Exterior - Lots of Blues
- \_\_\_\_\_ 102. **B - N PCE Stippled Strawberry Bowl - Scarce Color**
- \_\_\_\_\_ 103. G - 9" N Stippled Grape/Cable (Vt.) Plate
- \_\_\_\_\_ 104. **P - N Grape/Cable Sweetmeat Compote w/lid - Elegant**
- \_\_\_\_\_ 105. P - N Grape/Cable Butter Dish w/Lid - Super Duper
- \_\_\_\_\_ 106. **P - N Grape/Cable Breakfast Cream/Sugar - Neat Find**
- \_\_\_\_\_ 107. P - N Grape/Cable 4-3/4" Rnd. Berry Bowls - 4 x \$
- \_\_\_\_\_ 108. **Dk. A - N David/Bows Bowl - Always Desirable**
- \_\_\_\_\_ 109. P - N 9-1/2", 8 Ruffle Stippled Rays Bowl - Under Valued
- \_\_\_\_\_ 110. **Rich M - Bird/Grapes Wallpocket or Cockatoo**
- \_\_\_\_\_ 111. Dugan B - Radium Grape Delight Nut Bowl
- \_\_\_\_\_ 112. **A - 8-1/2", 10 Ruffle Double Stem Rose Bowl**
- \_\_\_\_\_ 113. Pink Stretchy - 7", 8 Ruffle Golden Grape Bowl
- \_\_\_\_\_ 114. **PO - Nautilus Whimsey Sugar Bowl**
- \_\_\_\_\_ 115. Dk. M - Deep 8" Rnd. Flared, 4 Flowers Soda Gold Bowl
- \_\_\_\_\_ 116. **M - 9", 10 Ruffle Garden Path Vt. Soda Gold Bowl**
- \_\_\_\_\_ 117. M - 6 Ruffle Pony Bowl - Always a Hit
- \_\_\_\_\_ 118. **W - 5-3/4" ICS Persian Garden Bowl**
- \_\_\_\_\_ 119. PO - C.R.E. 7-1/4" Smooth Ray Bowl
- \_\_\_\_\_ 120. **P - 8", 6 Ruffle Pillow/Sunburst Bowl - Nice Example**
- \_\_\_\_\_ 121. M - 8-1/2" Ruffled Wind Flower Bowl
- \_\_\_\_\_ 122. **Radium G - 8" Mlbg. ICS, Mayan Bowl - Better Example**
- \_\_\_\_\_ 123. Radium M - Mlbg. 3/1 Edge, 8" Grape Wreath 8 pt. Star Bowl
- \_\_\_\_\_ 124. **G - 9" Imp. Open Rose Plate - Better Example**
- \_\_\_\_\_ 125. Pretty A - 8 Ruffled Open Rose Bowl
- \_\_\_\_\_ 126. **Fantastic Amber - 9" Imp. Open Rose Plate**
- \_\_\_\_\_ 127. Helios G - 6-1/2" Rnd. Deep Open Rose Bowl
- \_\_\_\_\_ 128. **G - 9-1/2" Imp. Scroll Embossed Plate**
- \_\_\_\_\_ 129. Super Stretch M - 8" Plate w/Iron Cross Mark
- \_\_\_\_\_ 130. **M - (Pr.) Tree of Life Car Vases w/ Brackets**
- \_\_\_\_\_ 131. Dk. M - N Fine Cut/Roses Rosebowl
- \_\_\_\_\_ 132. **Ice B - N Fine Cut/Roses Rosebowl - Fancy Interior**
- \_\_\_\_\_ 133. P - N Fine Cut/Roses Rosebowl - Foot Chipped
- \_\_\_\_\_ 134. **Pretty B - N Beaded Cable Rosebowl**
- \_\_\_\_\_ 135. P - N Beaded Cable Rosebowl
- \_\_\_\_\_ 136. **Aq. Opal - N Beaded Cable Rosebowl - Always In Demand**
- \_\_\_\_\_ 137. G - N Beaded Cable Rosebowl w/Rayed Interior
- \_\_\_\_\_ 138. **B - Scarce N Drapery Rosebowl**
- \_\_\_\_\_ 139. P - N Rnd. Bushel Basket
- \_\_\_\_\_ 140. **G - N 8 Sided Bushel Basket - Very Hard to Find**
- \_\_\_\_\_ 141. M - N 8 Sided Bushel Basket - Base Cracked
- \_\_\_\_\_ 142. **Frosty W - N 8 Sided Bushel Basket**
- \_\_\_\_\_ 143. M - Iris/Herringbone Wine Glass
- \_\_\_\_\_ 144. **Pretty M - N P.C.E. Grape/Cable Bowl**
- \_\_\_\_\_ 145. P - N P.C.E. Grape/Cable Bowl w/BW Exterior
- \_\_\_\_\_ 146. **P - N 8-1/2" Grape/Cable Ruffled Bowl**
- \_\_\_\_\_ 147. Satiny Green - N 9" Ruffled Grape Leaves Bowl - Very Attractive
- \_\_\_\_\_ 148. **P - 8-1/2" Ruffled N 3 Fruits Dome Base Bowl**
- \_\_\_\_\_ 149. Dk. P - N 8-1/4" Ruffled Star of David/Bows Bowl
- \_\_\_\_\_ 150. **P - N 9" Ruffled Stippled Rays Bowl**
- \_\_\_\_\_ 151. P - N Fine Cut/Roses Rosebowl
- \_\_\_\_\_ 152. **B - N Beaded Cable Rosebowl - Pretty**
- \_\_\_\_\_ 153. G - N Beaded Cable Rosebowl - Irridized Interior
- \_\_\_\_\_ 154. **Pumpkin M - N Leaf/Beads Rosebowl**
- \_\_\_\_\_ 155. Light M - N 4-1/2" Acorn/Burrs Berry Bowl
- \_\_\_\_\_ 156. **G - N Grape/Cable Breakfast Creamer - Scarce Color**
- \_\_\_\_\_ 157. M - N Daisy/Plume Stemmed Rose Bowl
- \_\_\_\_\_ 158. **M - N Grape/Cable Whimsey Hat From Tumbler**
- \_\_\_\_\_ 159. Pumpkin M - N Peacock/Fountain Butter Dish and Lid
- \_\_\_\_\_ 160. **M - N Peacock/Fountain Spooner**
- \_\_\_\_\_ 161. P - 9" N Grape/Cable Plate (Nick Between Pts.)
- \_\_\_\_\_ 162. **B - N 9-1/4" Poppy Show Plate - Collar Base Chipped, but still a dandy**
- \_\_\_\_\_ 163. P - N 5-1/2" ICS Peacock/Urn Bowl
- \_\_\_\_\_ 164. **B - 5-1/4" ICS Peacock/Urn Bowl (Stippled) - Northwood**

#### TIME FOR SOME GOOD LUCK

- \_\_\_\_\_ 165. P - N Ruffled Good Luck Bowl w/BW Exterior - Multi Electric
- \_\_\_\_\_ 166. **Exceptional RARE WHITE - Good Luck 9" Rib Back Plate, Loaded w/Irid (One of Maybe 3 Known)**
- \_\_\_\_\_ 167. Pumpkin M - Ruffled Good Luck Bowl w/Rib Exterior
- \_\_\_\_\_ 168. **B - PCE Multi Electric Good Luck Bowl w/Rib Exterior**
- \_\_\_\_\_ 169. Outstanding Pastel M - PCE Good Luck Bowl w/Frosty Yellows and Blues

- \_\_\_\_\_ 170. **P - 9" N Good Luck Plate - BW Exterior**
- \_\_\_\_\_ 171. Shimmering Saph. - Ruffled Good Luck Bowl  
- Pinks, Blues, The Works
- \_\_\_\_\_ 172. **Great M - N Ruffled Stippled Good Luck Bowl - Fantastic Pinks/Greens**
- \_\_\_\_\_ 173. Gorgeous Elec. B - P.C.E. Good Luck Bowl  
- Awesome - Take Me Home
- \_\_\_\_\_ 174. **Rare Aqua - Ruffled Good Luck Bowl w/ OPAL TIPS - Great Look**
- \_\_\_\_\_ 175. Stunning M - Ruffled Good Luck Bowl -  
Greens, Yellows, Pinks
- \_\_\_\_\_ 176. **Ice B - N 7" Flared Tri Corner Candy Bowl**
- \_\_\_\_\_ 177. Frosty W - N 7" Flared Tri Corner Candy  
Bowl
- \_\_\_\_\_ 178. **Rare B - N 6" Tri Corner Candy Bowl**
- \_\_\_\_\_ 179. IB - N Hearts/Flowers Ruffled Bowl
- \_\_\_\_\_ 180. **Magnificent P - N Ruffled Hearts/Flowers Bowl - Hard to Find**
- \_\_\_\_\_ 181. IB - P.C.E. Nippon Bowl - A Favorite
- \_\_\_\_\_ 182. **P - N 9" Strawberry Plate - Great One**
- \_\_\_\_\_ 183. P - N 9" Grape/Cable Plate
- \_\_\_\_\_ 184. **G - N 9" Grape/Cable Plate - Always a Hit**

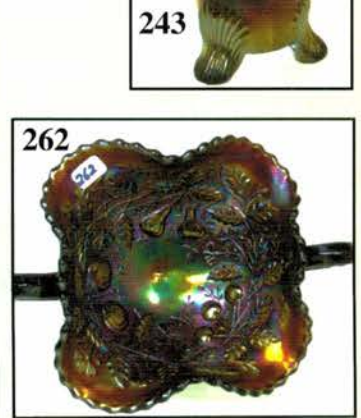
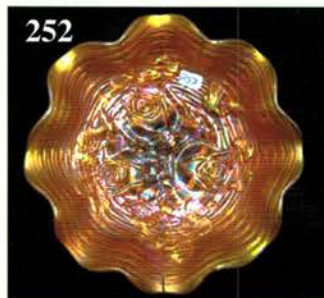
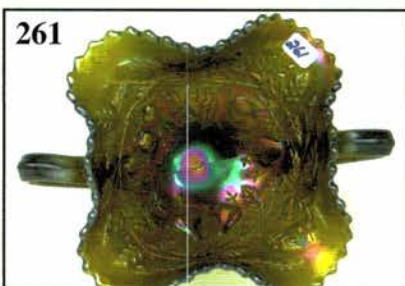
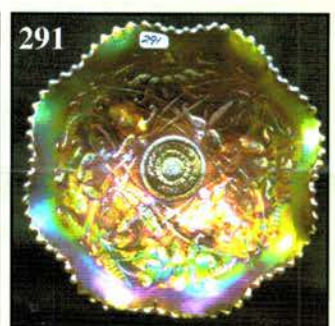
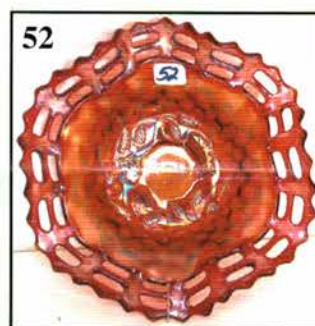
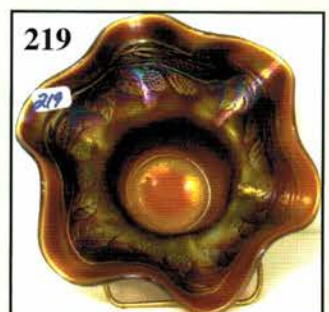
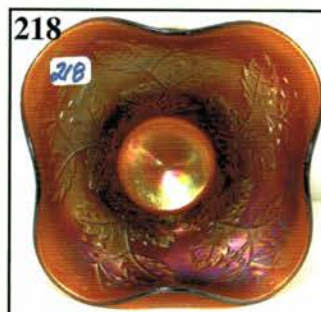
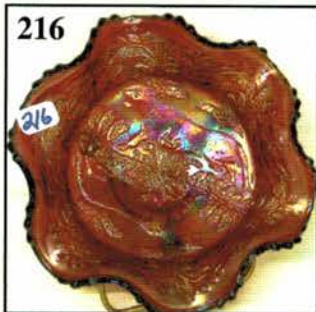
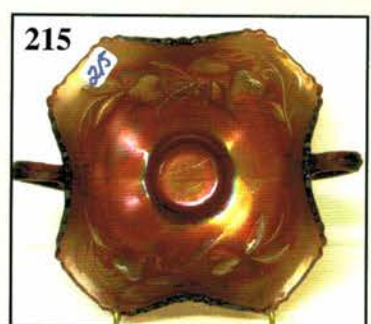
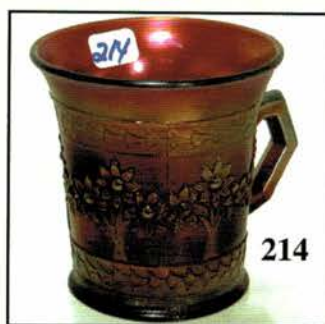
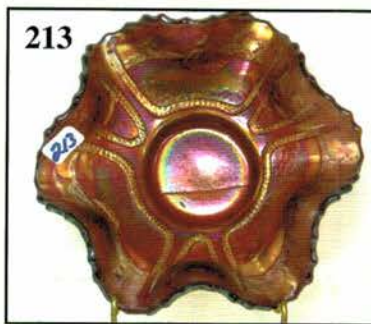
### BEAUTIFUL PASTEL WHITE - WOW!

- \_\_\_\_\_ 185. Scarce Radium W - 7-1/2" Ruffled Cosmos and  
Cane Bowl w/Headdress Interior
- \_\_\_\_\_ 186. **W - Cosmos/Cane 8" Master w/6, 4-1/2" Rnd. Berry Bowls (FANTASTIC MATCHED SET)**
- \_\_\_\_\_ 187. White Rainbow - 10" Low 8 Ruffle Cosmos &  
Cane Bowl
- \_\_\_\_\_ 188. **White 9", 12 Rnd. Scalloped Edge, Cosmos & Cane Master Bowl**
- \_\_\_\_\_ 189. W - 4-3/4" Rnd. 12 Scalloped Berry Bowl
- \_\_\_\_\_ 190. **Radium B - Spat. Ftd. 7-1/2", 2 Flowers Nut Bowl - Scarce Item**
- \_\_\_\_\_ 191. B - ICS 8" Peacock/Grape Bowl
- \_\_\_\_\_ 192. **Beautiful A - 9", 3/1 Edge Fenton Holly Bowl - Scarce Beauty**
- \_\_\_\_\_ 193. G - 8" Rnd. Fenton Holly Bowl
- \_\_\_\_\_ 194. **A - 9" Ruffled Captive Rose Bowl - Really Nice**
- \_\_\_\_\_ 195. M - 6", 2 Sides Up OE Basket
- \_\_\_\_\_ 196. **B - 5-1/2", 2 Sides Up OE Basket**
- \_\_\_\_\_ 197. M - JIP 6" OE Basket
- \_\_\_\_\_ 198. **B - 5" Ruffled OE Basket**
- \_\_\_\_\_ 199. Dk. M - Fenton Vintage Grape
- \_\_\_\_\_ 200. **M - 7-3/4" Deep Ruffle Fenton Peacock-N-Urn Nut Bowl - 1st I've Seen**
- \_\_\_\_\_ 201. M - Fenton Peacock w/Urn Compote
- \_\_\_\_\_ 202. **B - 8-3/4" Fenton Ruffled Peacock w/Urn Bowl - Extra Pretty**
- \_\_\_\_\_ 203. Dk. Purple - 6-1/4" Persian Medallion Plate
- \_\_\_\_\_ 204. **M - 7-1/2" Persian Medallion Plate - Unusual Size**

- \_\_\_\_\_ 205. Scarce Purple - Orange Tree Loving Cup -  
Flawed Handle
- \_\_\_\_\_ 206. **M - 7-3/4" Horse Medallion Plate - Fine One**
- \_\_\_\_\_ 207. Radium M - 6" Oval & Round Rose Bowl
- \_\_\_\_\_ 208. **Dk. M - Vintage Grape Powder Jar w/Lid**
- \_\_\_\_\_ 209. M - 8-3/4" Imp. Open Rose Plate
- \_\_\_\_\_ 210. **Amber - 9" Imp. Open Rose Plate - Splashy Pinks**
- \_\_\_\_\_ 211. Radium G - Scroll Embossed Compote

### IN THE RED GROUP

- \_\_\_\_\_ 212. **Red - 5-1/4" Round Sailboats Bowl - Rare Size and Pattern**
- \_\_\_\_\_ 213. Red - 6", 6 Ruffle Sailboats Bowl - Another  
Goodie
- \_\_\_\_\_ 214. **Brick Red - 3-1/2" Orange Tree Mug**
- \_\_\_\_\_ 215. Brick Red - Fenton Strawberry Bonbon - A  
Beauty
- \_\_\_\_\_ 216. **Red - 5-3/4" Ftd. Ruffled Panther Bowl**
- \_\_\_\_\_ 217. Beautiful Red - Fenton Vintage Grape  
Fernery
- \_\_\_\_\_ 218. **Red Amberina - 6" Ruffled Holly Hat - Scarce**
- \_\_\_\_\_ 219. Red Amberina - 6" Ruffled Blackberry Spray  
Hat - Vibrant
- \_\_\_\_\_ 220. **Red - 6" Ftd. Ruffled Waterlily Bowl - Very Impressive**
- \_\_\_\_\_ 221. Green - 5-1/2" Ruffled Ftd. Waterlily Bowl  
w/Emerald Highlights
- \_\_\_\_\_ 222. **Saph. - 6" Ruffled Waterlily Bowl - Seldom Seen**
- \_\_\_\_\_ 223. Vaseline LGO - 6" Ruffled Waterlily Bowl -  
Extremely Hard to Find
- \_\_\_\_\_ 224. **Yellow Vas. Opal - 6" Ruffled Waterlily Ftd. Bowl - Rare Color**
- \_\_\_\_\_ 225. Spectacular Lav. - N Grape/Cable Mid-Size  
Punch Bowl, Base & 6 Well Matched Cups -  
Shimmering Irid. - The Best
- \_\_\_\_\_ 226. **Great M - N Memphis Fruit Bowl, Base w/4 Cups**
- \_\_\_\_\_ 227. Green - N Memphis Fruit Bowl, Base w/4  
cups - Well Defined
- \_\_\_\_\_ 228. **Elec. P - Persian Garden, Ruffled Fruit Bowl w/Base - Show Stopper**
- \_\_\_\_\_ 229. Incredibly Pretty Deep P - Many Fruits Punch  
Bowl, Base, w/6 Great Cups - No Upgrades  
Needed
- \_\_\_\_\_ 230. **Dk. M - Fanciful Punch Bowl, Base and 10 Cups**
- \_\_\_\_\_ 231. Shimmering Pastel M - Grape/Cable Cracker  
Jar w/Lid
- \_\_\_\_\_ 232. **P - N Grape/Cable Compote w/Lid - Always in Demand**
- \_\_\_\_\_ 233. G - N 9" Rnd. Grape/Cable Fruit Bowl
- \_\_\_\_\_ 234. **Fantastic Radium M - N Grape/Cable Perfume Bottle w/Stopper - Exquisite**



- \_\_\_\_\_ 235. Radium M - Grape/Cable Dresser Tray
- \_\_\_\_\_ 236. **Radium M - Grape/Cable Pin Tray**
- \_\_\_\_\_ 237. M - Grape/Cable Cologne Bottle w/Stopper
- \_\_\_\_\_ 238. **Fantastic M - N Grape/Cable Bonbon - Super Yellows/Blues**
- \_\_\_\_\_ 239. M - Grape/Cable Banana Bowl - Pinks/Blues
- \_\_\_\_\_ 240. **Custard - Grape Arbor Whimsey Hat - Nutmeg Finish**
- \_\_\_\_\_ 241. P - Grape/Cable Sweetmeat Compote w/Lid - Absolute Screamer
- \_\_\_\_\_ 242. **Beautiful M - Grape/Cable Hatpin Holder - Blues/Pinks**
- \_\_\_\_\_ 243. P - Grape/Cable Hatpin Holder - Multi Elec.
- \_\_\_\_\_ 244. **Pumpkin M - Banded Grape/Cable Hatpin Holder - Seldom Seen**
- \_\_\_\_\_ 245. Dk. M - 11" Smooth Oval Edge Grape/Cable Dresser - Dripping w/Pinks
- \_\_\_\_\_ 246. **OK IG - Ruffled N Rose Show Bowl - Lots of Blues**
- \_\_\_\_\_ 247. G - Rose Show Ruffled Bowl - Blue Hilites
- \_\_\_\_\_ 248. **B - N Rose Show Plate - Rim Flake**
- \_\_\_\_\_ 249. P - N Rose Show Ruffled Bowl - Rim Chip
- \_\_\_\_\_ 250. **P - 9-3/4" Flat Rose Show Plate - Statement of Color**
- \_\_\_\_\_ 251. AO - N Ruffled Rose Show Bowl - Loaded w/Opal
- \_\_\_\_\_ 252. **Orange M - Ruffled Rose Show Bowl - Full of Pink - Upper Marie Chip (So?)**
- \_\_\_\_\_ 253. P.O. - Ruffled Fanciful Bowl - Plate
- \_\_\_\_\_ 254. **Blue Opal - Westmoreland Ruffle Carolina Dogwood Bowl**
- \_\_\_\_\_ 255. P - N 10" ICS Peacock/Urn Bowl
- \_\_\_\_\_ 256. **G - 9-1/2" Fenton Holly Plate - Scarce Color**
- \_\_\_\_\_ 257. P - Mlbg. 5-1/2" Rd. Flared Peacock Bowl
- \_\_\_\_\_ 258. **M - N Peacock at Fountain Ftd. Fruit Bowl - Radium - Top Looks White - A Beauty**
- \_\_\_\_\_ 259. M - 10" Ftd. Persian Med., G&C Fruit Bowl - Super
- \_\_\_\_\_ 260. **Rare Lime G - Pastel Fruits & Flowers Bonbon**
- \_\_\_\_\_ 261. Olive Green - Fruits & Flowers Bonbon - Very Neat Color
- \_\_\_\_\_ 262. **Electric P - Fruits & Flowers Bonbon - WOW!**
- \_\_\_\_\_ 263. Green - N 7-1/4" Fruits & Flowers Plate - Great Size
- \_\_\_\_\_ 264. **Pumpkin M - Singing Birds Mug**
- \_\_\_\_\_ 265. Elec. P - N Singing Birds Mug
- \_\_\_\_\_ 266. **Radium M - Orange Tree Mug - 3-1/2" Top**
- \_\_\_\_\_ 267. M - Banded Grape Mug
- \_\_\_\_\_ 268. **Rich M - Robin Mug - Very Under Valued**
- \_\_\_\_\_ 269. M - Stork and Rushes Mug
- \_\_\_\_\_ 270. **Rare Lime Vas. - Orange Tree Mug - Soft Marigold Irid.**
- \_\_\_\_\_ 271. White Custard Mug - No Irid w/Rose - May Be Fry Glass
- \_\_\_\_\_ 272. **Great A - Stork and Rushes Mug**
- \_\_\_\_\_ 273. Ice Blue Stretch - 7-3/4" Ruffled Rib Optic Vase - A Real Find
- \_\_\_\_\_ 274. **Celeste Stretch - 6" Round Fenton Stippled Rays Compote**
- \_\_\_\_\_ 275. Purple - Iron Cross Stretch 5-1/4" Vase, 5-1/4" Mouth
- \_\_\_\_\_ 276. **Rare IB Radium - 11" Leaf Columns Vase - Scarce**
- \_\_\_\_\_ 277. Radium Purple - 11" Leaf Columns Vase - Super Irid.
- \_\_\_\_\_ 278. **W - N Tree Trunk 11-1/8" Vase - Great Find**
- \_\_\_\_\_ 279. White - 9-1/4" Diamond Rib Vase - Few Around and A Beauty
- \_\_\_\_\_ 280. **Red - 11-3/4" Fenton Fine Rib Vase - Unusual Size**
- \_\_\_\_\_ 281. Red - 9-3/4" Fenton Fine Rib Vase - Quality Find
- \_\_\_\_\_ 282. **Purple - N Town Pump - Great Multi Electric Rarity**
- \_\_\_\_\_ 283. AO - Hearts & Flowers Compote - Great Butterscotch Irid.
- \_\_\_\_\_ 284. **IB - Hearts & Flowers Compote - WOW!**
- \_\_\_\_\_ 285. White Frosty - Hearts & Flowers Compote - Blue Irid.
- \_\_\_\_\_ 286. **Purple - Hearts & Flowers Compote - Hard One to Find**
- \_\_\_\_\_ 287. Beautiful IB - Ruffled Hearts & Flowers Bowl - Wow!
- \_\_\_\_\_ 288. **Rich M - PCE Strawberry Bowl**
- \_\_\_\_\_ 289. Great G - PCE N Strawberry Bowl
- \_\_\_\_\_ 290. **Green - 9-3/4" Wild Strawberry Ruffled Bowl - Neat Color**
- \_\_\_\_\_ 291. Multi Iridized M - N Ftd. Ruffled Wishbone Bowl
- \_\_\_\_\_ 292. **W - N Peacocks Ruffled Bowl - Frosty Rainbow Irid.**
- \_\_\_\_\_ 293. M - P.C.E. N Peacocks Bowl - Yellows/Pinks
- \_\_\_\_\_ 294. **Radium Rich M - N Peacocks Plate - PINKS Everywhere**
- \_\_\_\_\_ 295. Beautiful M - 8-3/4" Ruffled Coral Bowl - Hard to Find Beauty in Any Color
- \_\_\_\_\_ 296. **Green - ICS 8" Coral Bowl**
- \_\_\_\_\_ 297. Green - 8-3/4" Sq. 8 Ruffle Coral Bowl
- \_\_\_\_\_ 298. **B - 10-1/4", 6 Ruffle Persian Medallion Bowl - A True Blue**
- \_\_\_\_\_ 299. Pastel M - N 9", 8 Ruffle Greek Key Rib Back Bowl - WOW Yellows/Pinks
- \_\_\_\_\_ 300. **Elec. G Hat - 9-1/4" N Grape/Cable BW Plate**
- \_\_\_\_\_ 301. G - PCE N 3 Fruits Bowl - Pretty One
- \_\_\_\_\_ 302. **Light M - N Stippled 3 Fruits Plate**
- \_\_\_\_\_ 303. Dk. P - N 9-1/4" Stippled 3 Fruits Plate - A Super Sight
- \_\_\_\_\_ 304. **Clam - Pastel? - N 9", 3 Fruits Plate - Darn Pretty**



- \_\_\_\_\_ 305. Unusual G - N 9" Stippled 3 Fruits Plate - Rare  
- Pretty, You Need This!
- \_\_\_\_\_ 306. **M - Fenton Rnd. Master Butterfly & Berry  
Bowl w/6 Matching Bowls - Great Set**
- \_\_\_\_\_ 307. Dk. M - Butterfly/Berry, 7 pc. Water Set -  
Great Match
- \_\_\_\_\_ 308. **M - 6-3/4" Ruffled Lions Bowl**
- \_\_\_\_\_ 309. Spectacular M - 8-3/4" Ruffled Orange Tree  
Bowl w/Trunk Center
- \_\_\_\_\_ 310. **Purple - Beaded Stork/Rushes Water  
Pitcher - Rare Color**
- \_\_\_\_\_ 311. Elec. P - 6" Ruffled Imp. Grape Bowl
- \_\_\_\_\_ 312. **G - Peacock Tail Stemmed Bonbon**
- \_\_\_\_\_ 313. A - 4-3/4" Rnd. Stork/Rushes Berry Bowls (2  
x \$)
- \_\_\_\_\_ 314. **M - Inverted Peach, Open Breakfast Sugar  
Bowl**
- \_\_\_\_\_ 315. Light M - Ftd. 10 Ruffle Dugan Cherries  
Bowl
- \_\_\_\_\_ 316. **Dark M - Ftd. 10 Ruffle Dugan Cherries  
Bowl**
- \_\_\_\_\_ 317. M - Dugan Beaded Basket
- \_\_\_\_\_ 318. **P - 7-3/4" Ruffle Dugan Holly Bowl**
- \_\_\_\_\_ 319. B - 5-1/4" Rnd. Fenton Vintage Grape Bowl
- \_\_\_\_\_ 320. **M - 5-1/4" Rnd. Fenton Vintage Grape  
Bowl**
- \_\_\_\_\_ 321. M - Interior Rib Stemmed Cuspidor
- \_\_\_\_\_ 322. **Scarce M - Dugan Harvest Flower  
Tumbler**
- \_\_\_\_\_ 323. B - Enameled Cherries Tumbler
- \_\_\_\_\_ 324. **B - Enameled Ground Cherries Tumbler  
- Rim Nick**
- \_\_\_\_\_ 325. B - Lucile Tumbler
- \_\_\_\_\_ 326. **Dk. M - Waterlily Tumblers - 3 x \$**
- \_\_\_\_\_ 327. M - Floral/Grape Tumblers - 3 x \$
- \_\_\_\_\_ 328. **M - Dugan Heavy Iris Tumbler**
- \_\_\_\_\_ 329. M - Grape/Cable Tobacco w/Stippled Lid -  
Damaged Tongs
- \_\_\_\_\_ 330. **Scarce B - N 10-1/2" Tree Trunk Vase - A  
Real Eye Catcher**

- \_\_\_\_\_ 331. M - N 11" Tree Trunk Vase
- \_\_\_\_\_ 332. **Vaseline - 9-1/2" Fenton Fine Rib Vase**
- \_\_\_\_\_ 333. B - 9-1/4" Fenton Fine Rib Vase
- \_\_\_\_\_ 334. **Beautiful B - 10-1/2" Fenton Fine Rib Vase**
- \_\_\_\_\_ 335. B - 11-3/4" Fenton Fine Rib Vase
- \_\_\_\_\_ 336. **PO - 4-1/2" Tall, Wide Rib, Dugan Squatty  
Vase w/6-1/4" Opening**
- \_\_\_\_\_ 337. M - Dugan Mary Ann Vase
- \_\_\_\_\_ 338. **Beautiful PO - 9" Wide Rib Vase**
- \_\_\_\_\_ 339. G - N 10" Feathers Vase - M Overlay
- \_\_\_\_\_ 340. **Pumpkin M - 11-1/4" Plume Panels Vase**
- \_\_\_\_\_ 341. M - 10" Rustic Vase
- \_\_\_\_\_ 342. **M - 10" CRE Knotted Beads Vase**
- \_\_\_\_\_ 343. P - 11-1/2" April Showers Vase
- \_\_\_\_\_ 344. **G - 10-3/4" Diamond Rib Vase**
- \_\_\_\_\_ 345. M - 9" Fenton Flute Vase
- \_\_\_\_\_ 346. **Amber Imp. 11" Vase - 2-7/8" Base**
- \_\_\_\_\_ 347. M - Squatty 8" Diamond Pt. Columns Vase
- \_\_\_\_\_ 348. **Lav. - 9-3/8" Westmoreland Corinth Vase**
- \_\_\_\_\_ 349. M - Maple Leaf Spooner
- \_\_\_\_\_ 350. **W - 8-1/4" Frosted Block Square Bowl**
- \_\_\_\_\_ 351. M - Imp. Grape Punch Cups - All for one  
price
- \_\_\_\_\_ 352. **G - 10-3/4" Imp. (Ruffled) Grape Bowl w/  
Base Crack**
- \_\_\_\_\_ 353. M - Imp. Paneled Goblet
- \_\_\_\_\_ 354. **M - 6" Tall Iris/Herringbone Goblet**

**SEVERAL BOX LOTS AT THE END**

### **SPECIAL NOTE:**

**NO SUNDAY CALLS, PLEASE!**  
Winning Absentee Bidders will be contacted Monday  
through Wednesday of the week following the  
Auction! Thank You!

### **SEND ALL MAIL TO:**

18350 Hunters Ridge Ct.  
Boonville, MO 65233

### **👉 AUCTION CALENDAR OF EVENTS**

**Saturday, July 14 @ 9:00 am**

**Carnival Glass Auction @ Boonville, MO  
*WOW! Super Collection*  
*White Good Luck Plate and More***

July 21, 9 am - Hugh Antique Estate  
August 18, 9 am - Carnival Glass at Boonville  
Sept. 15, 9 am - Carnival Glass at Boonville  
October 20, 9 am - Carnival Glass at Boonville  
Nov. 17, 9 am - Carnival Glass at Boonville  
January 12, 2008, 9 am at Boonville  
17th Annual New Years Extravaganza

**👉 Call Today To Sell Your Fine Items**  
660-882-5292 Day  
660-882-5283 Evening

**WATCH: 👉 Web Site: [www.AWK.SHN.com](http://www.AWK.SHN.com)**

