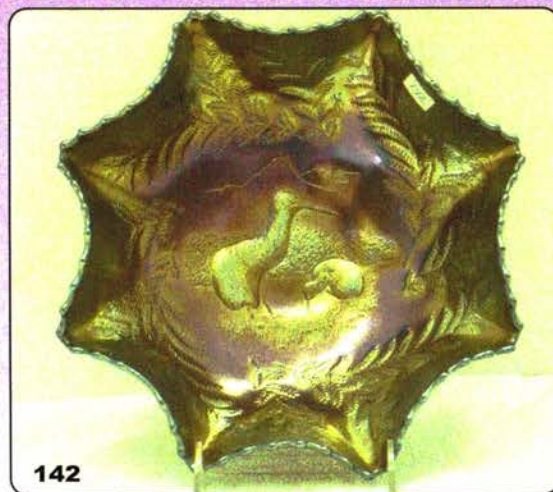
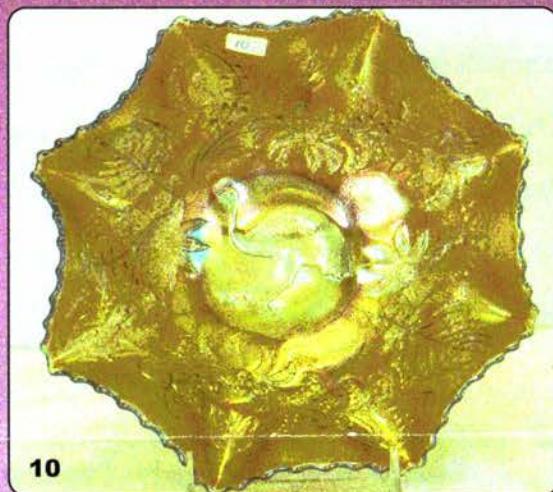
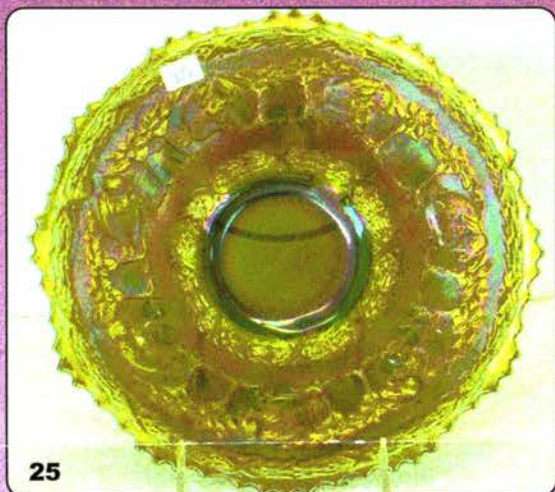


Lincoln Land Carnival Glass Club Convention

AUCTION

Saturday, June 2nd, 2007 -- 9:30 A.M.



*Best Western Milwaukee Airport Hotel and Convention Center
5105 South Howell Avenue
Milwaukee, Wisconsin*

Call Jean at (414)831-3655 for reservations

Seeck Auctions

JIM & JAN SEECK

P.O. Box 377
Mason City, Iowa 50402

641-424-1116



SATURDAY, JUNE 2nd, 2007 -- 9:30 A.M.

Best Western Airport Hotel -- Milwaukee, Wisconsin

NO BUYER'S PREMIUM

OPEN TO THE PUBLIC



Don't forget to check out our website for lots of pictures!

www.seeckauction.com

Also, please email us and we will put you on our email mailing list for auction notices.

Seeck Auctions is pleased to selling the David and Amy Ayers collection of Carnival Glass at the Lincoln Land Convention. David and Amy have a super nice collection with overall excellent iridescence. They enjoyed collecting foreign and Australian pieces and have a nice selection of very rare pieces. Come join us at the Lincoln Land convention this year. Always a very hospitable club!

Lincoln Land Club Convention info: Contact Roger MacAuley at 815-732-7460

Terms: Cash or Check, VISA and MasterCard accepted w/proper ID. **3% Clerking Fee** on all purchases except for payment of cash or check. Announcements made day of sale take precedence over any printed information.

**** Sales Tax will be charged, please bring your tax-exempt numbers.**

Visit the Lincoln Land Carnival Glass Club Website: <http://www.llcgc.homestead.com>

ABSENTEE BID POLICY

1. Write-in bids will be accepted by sending the numbers of the item(s) desired and the amount bid on each to:
Seeck Auctions, PO Box 377, Mason City, Iowa 50402.
2. You may call in your bids previous to the auction at (641)424-1116. (this is not live phone bidding)
3. You may **email** your bids to us: **jimjan@seeckauction.com** Continue to include the numbers of the item(s) you would like to bid on and amount bid on each, please include your telephone number.
4. There is a \$5 handling charge for each successful bid. Shipping and insurance charges are additional.
5. Bidders will be notified by phone/email if their bid(s) are successful. This will be done 1 - 3 days after the auction.
6. Please have all bids in by **Tues., May 29th**. All bids (by mail, phone or **email**) after this date may not be carried out.
7. Please place bids in the following increments: \$1 to \$300 - \$5 increments \$300 up - \$25 increments.
8. **If you do not receive an item that sold for less than your bid, assume we cancelled your bid because the piece of glass had below average color, manufacture problem, damage or was not listed correctly.**
9. Auction results are posted on our website within 5 days of the auction (depending on drive time home from the sale.)

Also results are available in many of the club newsletters.

- ___ 1. Butterfly & Berry 9" vase - blue
- ___ 2. April Showers 10" vase - marigold - has Peacock Tail interior
- ___ 3. Vintage fernery - marigold
- ___ 4. 1909 Louisville, KY Shriner's champagne
- ___ 5. 1910 New Orleans Shriner's champagne
- ___ 6. 1911 Rochester, New York Shriner's champagne
- ___ 7. 1904 Atlantic City Shriner's mug, fish on handle
- ___ 8. N's Grape Leaves 3 in 1 edge bowl - marigold
- ___ 9. Fenton's Grape & Cable 7" ruffled bowl - marigold
- ___ **10. Australian Emu large 8 ruffled bowl - aqua - extremely rare color & very pretty**
- ___ **11. Australian Emu large 8 ruffled bowl - dark - super irid.**
- ___ 12. Australian Emu 8 ruffled sauce - dark
- ___ 13. Australian Emu 8 ruffled sauces (2) - marigold - choice
- ___ **14. Good Luck PCE bowl w/ribbed back - blue - electric & super**
- ___ 15. Good Luck PCE bowl w/ribbed back - marigold - nice
- ___ 16. Poinsettia & Garland 5 1/2" jardinière - marigold
- ___ 17. Double Tulip 6 1/4" vase - marigold
- ___ 18. Derby 6 1/2" vase - marigold
- ___ **19. Grape & Cable turned in centerpiece bowl - purple - fantastic, this is fabulous**
- ___ **20. Grape & Cable turned up centerpiece bowl - marigold - nice**
- ___ 21. Heart & Vine IC shaped bowl - green
- ___ 22. Stag & Holly lg size ftd IC shaped bowl - blue - super, radium irid.
- ___ 23. Astrid rose bowl - marigold
- ___ 24. Garden Path Variant deep round bowl - marigold - unusual shape
- ___ **25. Peter Rabbit 9" plate - green - spectacular, a real beauty, RARE**
- ___ 26. Triple Alliance cookie jar, no lid - marigold
- ___ 27. Four Flowers 6" plate - peach opal
- ___ **28. Vintage 9" 8-ruffled bowl - Persian blue - as nice as I've seen, super piece!**
- ___ 29. Vintage 9" 8-ruffled bowl - odd color blue
- ___ 30. Vintage 9" 8-ruffled bowl - amethyst - nice
- ___ **31. Oriental Poppy 6 pc. tankard water set - marigold - pretty set**
- ___ 32. Peacock Tail 7" ruffled bowl - green
- ___ **33. Orange Tree 9" plate - marigold - very pretty**
- ___ 34. Orange Tree w/trunk 9" plate - white - also very pretty
- ___ 35. Vera 7 1/2" ftd vase - black amethyst
- ___ 36. Triads 8" vase - marigold
- ___ 37. European Vintage Grape 8" round bowl - marigold
- ___ **38. Stippled Good Luck 9" plate w/ribbed back - purple - super pretty stretchy irid.**
- ___ 39. My Lady cvd powder jar - marigold
- ___ 40. N's Bushel Basket - aqua opal - super butterscotch, pretty
- ___ 41. Frosted Starflower water pitcher - marigold - JAIN
- ___ 42. Frosted Starflower tumbler - marigold - JAIN
- ___ 43. Frosted Starflower Variant water pitcher - marigold - JAIN
- ___ 44. Frosted Starflower Variant tumbler - marigold - JAIN
- ___ **45. Peacocks ruffled bowl w/ribbed back - aqua opal - lots of opal & pretty!**
- ___ **46. Peacocks ruffled bowl w/ribbed back - purple - fantastic electric colors**
- ___ **47. Peacocks ruffled bowl w/ribbed back - purple - nice**
- ___ 48. Pearly Dots 3 in 1 edge bowl - green
- ___ 49. St. Jarna bonbonniere w/lid - blue
- ___ 50. Triangle Circle 6" European vase - marigold - can't find the pattern, so we made this one up
- ___ **51. Peacock at the Fountain 7 pc. punch set - marigold - super pretty, a great set!**
- ___ 52. Sailboats ruffled sauce - marigold
- ___ **53. M'burg Diamonds 7 pc. water set - green - as pretty of a set that I have sold**
- ___ 54. Vintage 7 1/2" plate - green - scarce
- ___ 55. Vintage 7 1/2" plate - blue
- ___ 56. Jacobean Ranger tumble-up - marigold

- ___ 57. Jacobean Ranger perfume atomizers (2) - marigold - choice
- ___ 58. Jacobean Ranger cologne bottle w/stopper - marigold
- ___ 59. Jacobean Ranger perfume bottles w/stoppers (2) - marigold - choice
- ___ 60. Jacobean Ranger ring tree - marigold
- ___ 61. Jacobean Ranger cvd dresser jar - marigold
- ___ 62. Australian Kookaburra large 12-ruffled bowl - marigold
- ___ 63. Australian Kookaburra 12-ruffled sauce - marigold
- ___ **64. Rose Show 9" plate - green - very rare plate & nice**
- ___ **65. Rose Show 9" plate - white - nice**
- ___ 66. Luster Rose 7 1/2" ftd round bowl - marigold
- ___ **67. Grape & Cable 4 pc. table set - green - harder to find color, nice**
- ___ **68. Grape & Cable 4 pc. table set - purple - nice**
- ___ **69. Grape & Cable 4 pc. table set - marigold - nice**
- ___ 70. Crabclaw 8" deep round bowl - marigold
- ___ 71. M'burg Nesting Swan ruffled bowl - marigold - radium & nice
- ___ 72. Poinsettia milk pitcher - marigold
- ___ **73. Peacock & Grape ruffled bowl - red - very scarce & nice**
- ___ 74. Australian Gum Tips 9" vase - dark - scarce
- ___ 75. Australian Gum Tips 8" vase - marigold - scarce
- ___ 76. Blackberry Open Edge ruffled basket - red - always desirable
- ___ 77. Pansy ruffled bowl - purple - super
- ___ 78. Dagny 8" vase - blue
- ___ 79. Diamantes 6" vase - marigold
- ___ **80. Double Stemmed Rose dome ftd ruffled bowl - celest blue - super pretty, stretchy & rare**
- ___ 81. Double Stemmed Rose dome ftd 3 in 1 edge bowl - purple - pretty
- ___ 82. Ski Star lg size 8 ruffled bowl - peach opal
- ___ 83. Ski Star lg size 6 ruffled bowl - peach opal
- ___ **84. Tree Trunk 10" vase - ice green - super pretty**
- ___ 85. Tree Trunk 10" vase - blue - a dandy
- ___ 86. Tree Trunk 10" vase - green
- ___ 87. Paneled Block cider pitcher - marigold - similar to Jacobean Ranger
- ___ 88. Paneled Block tumbler - marigold - similar to Jacobean Ranger
- ___ **89. Fenton's Peacock at Urn 8 ruffled bowl - Persian blue - very pretty example for these, rare**
- ___ **90. Fenton's Peacock at Urn 8 ruffled bowl - marigold on moonstone - very pretty example, rare**
- ___ 91. Imperial Grape 7 pc. wine set - marigold
- ___ **92. Peacocks 9" plate w/ribbed back - purple - super**
- ___ **93. Peacocks 9" plate w/ribbed back - marigold - nice**
- ___ **94. Peacocks 9" plate w/ribbed back - white - frosty & pretty**
- ___ 95. Luster Rose butter dish, creamer & spooner - marigold - choice
- ___ **96. Australian Shrike large 12 ruffled bowl - marigold - pretty**
- ___ 97. Australian Shrike 12 ruffled sauce - marigold
- ___ 98. Four Pillars 10" vase - aqua opal - butterscotch & beautiful
- ___ 99. Cut Flowers vase - marigold
- ___ 100. Fashion 7 pc. water set - marigold
- ___ 101. Captive Rose 6 ruffled bowl - green
- ___ **102. Plume Panels & Bows water pitcher & 6 stemmed goblets - marigold - great set, rare**
- ___ 103. Eda Moller rosebowl - marigold
- ___ **104. Fenton's Peacock at Urn 9" plate - white - very pretty**
- ___ 105. Leaf Chain 7" ruffled bowl - marigold
- ___ 106. Holly 8 ruffled bowl - marigold on moonstone - very rare, has epoxy over open bubble on base
- ___ 107. Holly 8 ruffled bowl - marigold
- ___ 108. N's Peacock at Urn 10" ruffled bowl - marigold - rare & pretty
- ___ 109. Fashion rose bowl - marigold - pretty
- ___ 110. Three Fruits spt ftd ruffled bowl - purple - super

- ___ 111. Grape & Cable 7 pc. water set - marigold - pretty
- ___ 112. Dahlia 7 pc. water set - purple - contemporary
- ___ 113. Dahlia 7 pc. water set - white - contemporary
- ___ 114. 1983 ICGA Frolicking Bears spittoon - vaseline opal
- ___ 115. Grape salt & pepper shakers - smoke - marked IG
- ___ 116. Paneled Grape cream & sugar - blue - contemporary
- ___ 117. 1991 ICGA special commemorative pitcher - white opal - hand painted by K Lauduman
- ___ 118. Indiana Glass Grape pattern pitcher - blue
- ___ 119. Swan & toothpick - contemporary - choice
- ___ 120. 1998 HOACGA loving cup - white opal - hand decorated
- ___ 121. Good Luck ruffled bowl - green - contemporary
- ___ 122. Milady tankard pitcher - red - contemporary
- ___ 123. Poppy Show vase - turquoise - contemporary
- ___ 124. Heavy Iris vase - blue - contemporary
- ___ 124A. Drapery & Diamond Plum Opal Rose Bowl, 4" high x 2 5/8" base x 3 1/4" top opening, proceeds donated to LL Club
- ___ 124B. Christmas Compote in Plum Opal, has multi-colored radium iridescence covering the entire interior & exterior, signed A over P, proceeds donated to LL Club
- ___ 124C. Electric Purple 10 1/2" Hearts & Flowers dome ftd compote, Signed by Scott Fenton, proceeds donated to LL Club
- ___ 125. **Captive Rose 9" plate - amethyst - very scarce & pretty**
- ___ 126. **Captive Rose 9" plate - marigold - scarce & nice**
- ___ 127. Fish 9 1/2" vase - marigold
- ___ 128. Elephant 7" vase - marigold
- ___ 129. N's Town Pump - purple - chip on base
- ___ 130. Fanciful IC shaped bowl - white - pretty
- ___ 131. Imperial Grape 7 pc. water set - marigold
- ___ 132. **Fenton's Fine Rib 13" vase - aqua opal - extremely rare especially in this tall size, nice**
- ___ 133. Fenton's Fine Rib 12" vase - blue
- ___ 134. Cherry Chain 10" 6 ruffled bowl - blue - pretty
- ___ 135. Round Up low ruffled bowl - marigold - pretty
- ___ **136. Hearts & Flowers PCE bowl w/ribbed back - white - frosty & super, quite rare**
- ___ 137. Freefold 12" vase - purple - pretty!
- ___ 138. M'burg Primrose ruffled bowl - marigold - satin & super
- ___ **139. Dragon & Lotus ruffled bowl - marigold on moonstone - a beauty, rare**
- ___ 140. Acanthus deep round bowl - purple - super
- ___ 141. Orange Tree standard size mug - blue - super
- ___ **142. Australian Kiwi lg size 8 ruffled bowl - dark - extremely rare bowl, very few around**
- ___ 143. Double Dutch ftd round bowl - marigold
- ___ 144. Heavy Grape 7" ruffled bowl - blue - rare color, super
- ___ 145. Hatpins including: Triad; Top of the Morning; Moiré Beetle(2); Rooster in white; Bars & Beads; Butler's Mirror - choice
- ___ 146. Grape & Cable 9" plate w/plain back - purple - very pretty
- ___ **147. Rustic 19" funeral vase - marigold - super pretty example**
- ___ 148. Right Hand 8 1/2" vase - marigold
- ___ 149. Right Hand 5" vase - marigold
- ___ 150. Right Hand 4 1/2" vase - marigold - smallest one known
- ___ **151. Peacock at the Fountain 7 pc. water set - white - fantastic set!**
- ___ **152. Peacock at the Fountain 7 pc. water set - purple - super set**
- ___ **153. Peacock at the Fountain 7 pc. water set - marigold - another great set**
- ___ 154. Floral Sunburst 6 1/2" flared out vase - blue - pretty
- ___ 155. Four Flowers 10" ruffled bowl - blue - foreign
- ___ **156. Two Flowers spt ftd 9" plate - marigold - super pretty even irid.**
- ___ 157. Rustic 10" vase - white - nice
- ___ 158. Rustic 10" vase w/crimped top - marigold
- ___ **159. Peacock & Grape IC shaped bowl - marigold on moonstone - super pretty & quite rare**

- ___ 160. Helen's Star 6" vase - marigold - JAIN
- ___ 161. Daisy Drape 6" vase - marigold - JAIN
- ___ **162. Australian Swan lg size 16 ruffled bowl - marigold - pretty**
- ___ 163. Australian Swan 8 ruffled sauce - marigold
- ___ **164. Stippled Good Luck ruffled bowl w/ribbed back - reninger blue - nice, rare**
- ___ 165. Stippled Good Luck ruffled bowl w/ribbed back - blue - super electric
- ___ 166. Raspberry or Blackberry ftd ruffled compote - lime green - feet have been slightly polished, scarce
- ___ 167. Orange Tree loving cup - white - very scarce, heat check in handle
- ___ 168. Orange Tree Loving cup - blue - very pretty example
- ___ 169. Tokio 9" round bowl - blue
- ___ 170. Tokio 8" round bowl - pearl - rare color
- ___ **171. Wishbone ftd ruffled bowl - blue - electric & pretty**
- ___ 172. Little Flowers 6" tri-cornered plate - green
- ___ 173. Strawberry 9" plate w/BW back - purple
- ___ 174. Frosted Couple water pitcher - marigold - JAIN
- ___ 175. Frosted Dancing Mice milk pitcher - marigold - JAIN
- ___ 176. Frosted Indian Cameo 6" vase - marigold - JAIN
- ___ **177. Grape & Cable small size round shaped 8 pc. punch set - marigold - beautiful set!**
- ___ 178. Thistle 6 ruffled bowl - marigold
- ___ 179. Basketweave Open Edge ruffled basket - red
- ___ 180. Sunflower & Diamond vase - marigold
- ___ **181. Poppy Show 9" plate - marigold - scarce & very pretty**
- ___ **182. Poppy Show 9" plate - white - very nice**
- ___ 183. Left Hand 6 1/2" vase - blue - scarce color
- ___ 184. Left Hand 6 1/2" vase - marigold
- ___ 185. Left Hand 5" vase - marigold
- ___ **186. Australian Kangaroo lg size 16 ruffled bowl - marigold - pretty**
- ___ 187. Australian Kangaroo 12 ruffled sauce - marigold
- ___ **188. Singing Birds 7 pc. water set - marigold - pretty set**
- ___ 189. Dugan Cherries ftd ruffled bowl - marigold
- ___ **190. Peacocks PCE bowl w/ribbed back - amethyst - super pretty, some may call this lavender**
- ___ 191. Round Up IC shaped bowl - white - super
- ___ 192. Drapery Variant 8" vase - marigold - dark & super
- ___ 193. Davann vase - lilac w/marigold overlay
- ___ 194. Hazel vase - lilac w/marigold overlay
- ___ 195. Imperial Grape 10" lg ruffled bowl - purple - spectacular
- ___ **196. Wild Berry powder jar w/lid - marigold - tough miniature w/lid**
- ___ 197. Charlie lg 10" bowl - blue
- ___ **198. Vining Leaf 6 1/2" vase or lg jardinière - marigold**
- ___ **199. Dandelion mug - blue - has electric highlights**
- ___ 200. Flowers & Frames dome ftd ruffled bowl - purple - very pretty
- ___ 201. Hearts & Flowers ruffled compote - marigold
- ___ 202. Hearts & Flowers ruffled compote - white - nice
- ___ 203. Three Fruits 9" plate w/BW back - green - pretty
- ___ 204. Blueberry tumblers (6) - marigold - choice
- ___ **205. Australian Magpie lg 8 ruffled bowl - marigold**
- ___ 206. Australian Magpie 8 ruffled sauces (2) - marigold - choice
- ___ 207. Fine Rib 10" vase - red - cherry & pretty
- ___ 208. Lion 7" ruffled bowl - marigold
- ___ 209. Rustic 16" mid-size vase - blue
- ___ 210. Diamantes tumbler - marigold
- ___ 211. JAIN tumbler - marigold - can't find pattern name
- ___ **212. Peacock at the Fountain 4 pc. table set - white - very rare set, butter dish bottom is Peach**
- ___ 213. Prism ftd vase - marigold
- ___ **214. Blackberry Spray ruffled hatshape - reverse amberina opal, rare color**
- ___ 215. Scroll Embossed ruffled sauce w/File back - marigold

- ___ 216. **Pansy dresser tray - purple - very rare & pretty**
- ___ 217. Double Diamond perfume - marigold
- ___ 218. Double Diamond dresser box - marigold
- ___ 219. Double Diamond small dresser box - marigold
- ___ 220. Double Diamond oval pin dish - marigold
- ___ 221. Double Diamond tumbler w/tumble up - marigold
- ___ 222. **Good Luck 9" plate w/BW back - purple - super pretty**
- ___ 223. Ripple 8" vase - purple - super pretty, has 3 1/4" base
- ___ 224. Basketweave Open Edge JIP basket - red
- ___ 225. Ftd cake plate, similar to Double Diamond - marigold
- ___ 226. **Diamond Lace water pitcher - purple - super**
- ___ 227. Fleur De Lis 6" plate - marigold - pretty
- ___ 228. **Peacock & Grape 9" plate - marigold - pretty**
- ___ 229. Apple Blossom Twigs ruffled bowl w/plain edge - purple - super
- ___ 230. Fenton's Thin Rib 15" vase - marigold
- ___ 231. Australian Swan lg size 16 ruffled bowl - marigold
- ___ 232. Australian Kingfisher lg size 12 ruffled bowl - marigold
- ___ 233. **Daisy Cut bell - marigold - nice**
- ___ 234. Six Petals tri-cornered bowl - purple - super petty
- ___ 235. Hearts & Flowers ruffled bowl w/ribbed back - white - frosty & pretty
- ___ 236. Blackberry Banded ruffled hatshape - marigold on moonstone - scarce
- ___ 237. Diamond Rib 10" vase - white - nice
- ___ 238. Stippled Three Fruits ruffled bowl w/ribbed back - marigold - nice
- ___ 239. Holly 3 in 1 edge bowl - marigold
- ___ 240. **Stippled Grape & Cable 10" ruffled bowl w/BW back - marigold - very pretty**
- ___ 241. Ripple 8 1/2" vase - marigold - has 2 1/2" base
- ___ 242. Ripple 9" vase - white, has a touch of clambroth towards top - 2 1/2" base
- ___ 243. Miniature Morning Glory 8" vase - white
- ___ 244. **Butterfly & Berry hatpin holder - blue - fantastic, as pretty as I've seen**
- ___ 245. Forty Niner 6" under plate for tumble up - marigold
- ___ 246. Good Luck ruffled bowl w/ribbed back - marigold - pretty
- ___ 247. Diamond Point 10" vase - purple
- ___ 248. **Daisy & Drape vase - white - nice**
- ___ 249. Holly 2 sides up hatshape - red - scarce
- ___ 250. Ripple 10" vase - purple - super, has 3 3/8" base
- ___ 251. Vintage 6 ruffled bowl - odd root beer type color
- ___ 252. Drapery candy dish - white - chip on one toe
- ___ 253. Cvd Jar w/Diamond pattern - marigold
- ___ 254. Ashtray, similar to Pinwheel - blue - several nicks in pattern
- ___ 255. **Stippled Peacocks 9" plate w/ribbed back - marigold - a beauty!**
- ___ 256. Luster Rose fernery - marigold
- ___ 257. Strawberry ruffled bowl w/plain back - purple - super
- ___ 258. Fanciful 3 in 1 edge bowl - marigold
- ___ 259. Target 9 1/2" vase - purple - pretty
- ___ 260. **Peter Rabbit IC shaped bowl - green - fantastic! rare & super!**
- ___ 261. Fenton's Flowers rose bowl - marigold - chip on foot
- ___ 262. Grape & Cable butter dish top - marigold
- ___ 263. Whirling Star compote - marigold
- ___ 264. Diamond Column 10" vase - green - roughness on top edge
- ___ 265. Foreign pcs (2) - choice



132

Seeck Auctions

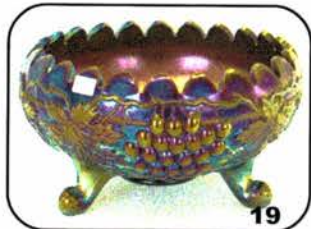
P.O. Box 377
Mason City, Iowa 50402

PRESORTED
FIRST-CLASS MAIL
U.S. POSTAGE PAID
MINNEAPOLIS, MN
PERMIT NO. 28534

T4 P1 *****AUTO**MIXED AADC 553
Lee Markley
PO Box 306
Mentone, IN 46539-0306



244



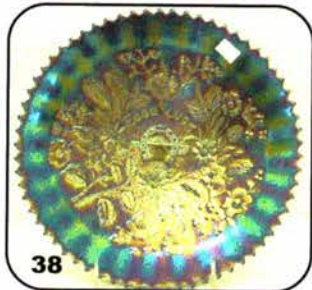
19



151



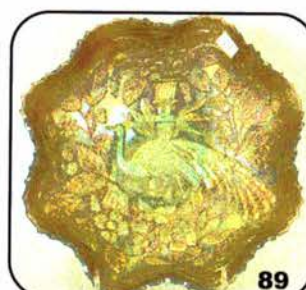
51



38



181



89



108



45



64



28



255