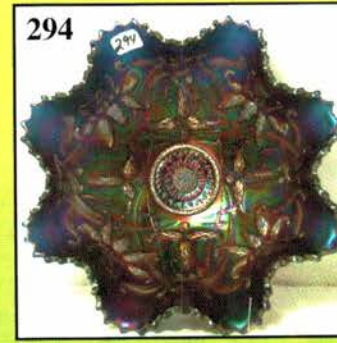
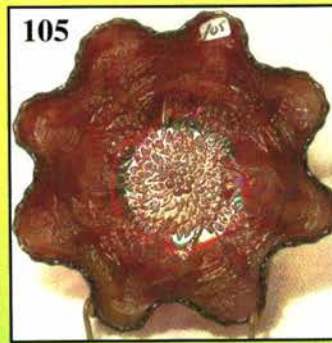
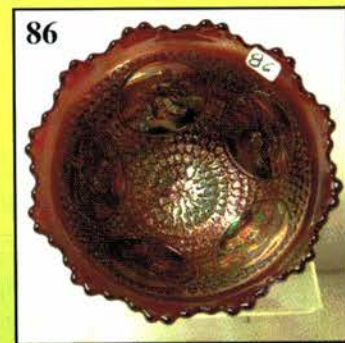
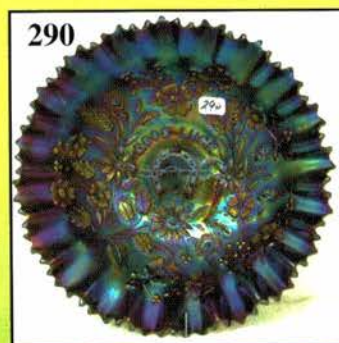
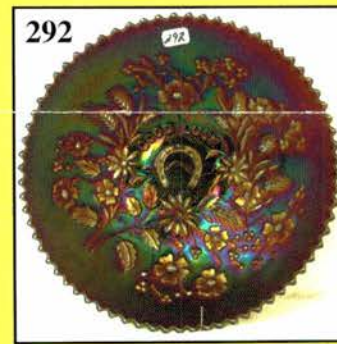
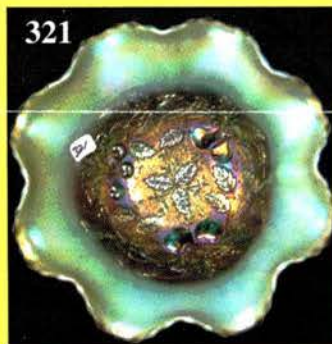
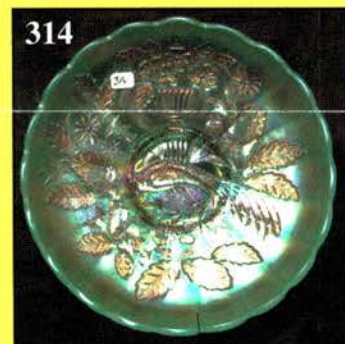
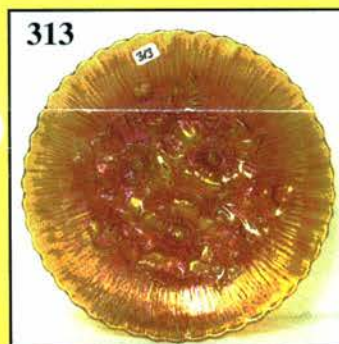
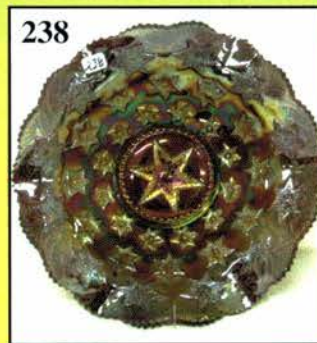
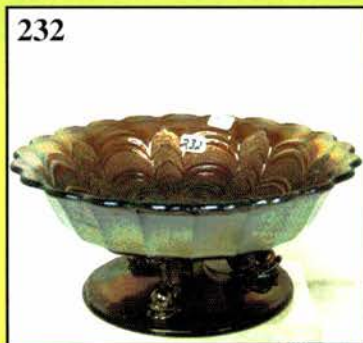
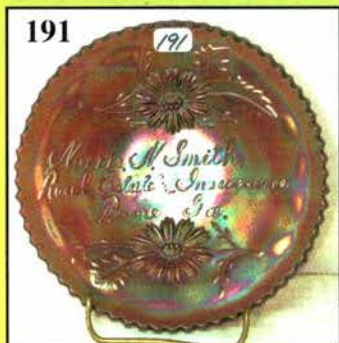


CARNIVAL GLASS AUCTION

Saturday, March 10, 2007 9:00 a.m.

Sunday, March 11, 2007 9:00 a.m. (Snow Day Only)

Delores and Frank Becieka Collection



Held By the Mickey Reichel Antique & Auction L.C.

Office: 660-882-5292 • Home: 660-882-5283

NEW WEB SITE: www.AWK-SHN.com

E-mail: mreichel@AWK-SHN.com

Held Inside the Mickey Reichel Auction Center

1 Mile North of I-70 on Hwy. 5, Exit 101, Boonville, Missouri • 20 Miles West of Columbia, MO on I-70



Preview Friday 12 p.m. - 5 p.m. and 7:30 a.m. - 9:00 a.m. Day of Auction

TERMS: Cash or Good Check, VISA and MasterCard accepted.



4% Clerking Fee on all purchases except for payment of cash or check. Proper I.D. required.

WEB SITE: www.AWK-SHN.com

ABSENTEE BID POLICY:

WRITE IN BIDS: If you are unable to attend the auction, we will be happy to accept absentee bids which must be received by THURSDAY, MARCH 8, 2007. Don't Delay. **E-Mail: mreichel@AWK.SHN.com** ← ← ← ←

DIRECT ALL MAIL TO: 18350 Hunters Ridge Ct., Boonville, MO 65233-2971

PLEASE NOTE: There is a **\$5 handling charge for each successful bid which will be added to the selling price** for all write-in bids. This is in addition to the cost of postage, insurance and packing. Your write-in bid will be entered just as if you are present and bidding. **Successful bidders will be notified in 1 to 3 days by the auctioneer (so be sure to include your phone number).** Direct mail bids to Auctioneer Mickey Reichel, 18350 Hunters Ridge Ct., Boonville, MO 65233-2971. Terms: Cash or Check accepted with proper I.D. and Social Security Number and References. Announcements made day of the auction supercede all printed material. Not Responsible for Accidents or Sold Items. **(Phone bids welcome Before Auction Begins.)**

No return on any items once they leave the Auction Center (No Exceptions).****

Call for additional information: 660-882-5292 days or 660-882-5283 evenings before 9:00 p.m.


FAX: 660-882-5292 (evening hours start FAX transmission after beep)

MAIL BIDS: Items are bid on in perfect condition with average or above iridescence OR as listed in the brochures. Bids will not be carried out when damage on an item has been found during the auction.

PEOPLE PRESENT AT AUCTION ARE RESPONSIBLE FOR FINDING ANY PINHEADS, WEAR, SPOTTINESS, MANUFACTURER'S DEFECTS OR ANY OTHER MINOR FLAWS, ETC. *****

NOTE: Read each line, as we have accentuated the type of no particular piece, all are special.

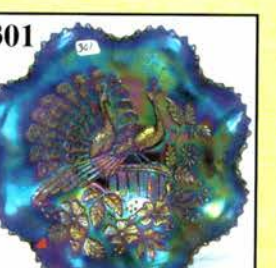
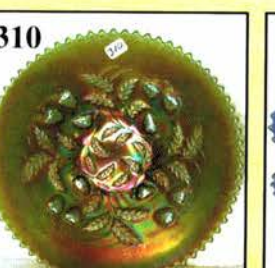
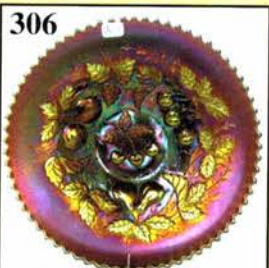
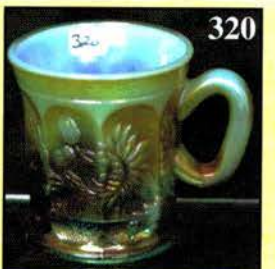
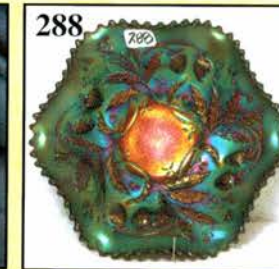
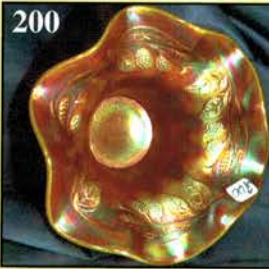
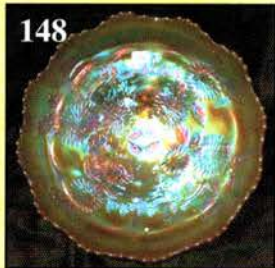
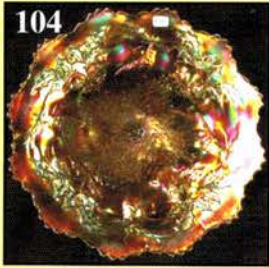
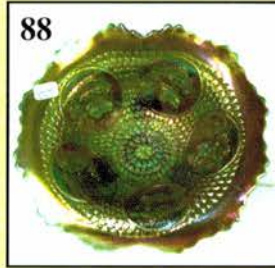
Make Reservations EARLY at one of these local motels:

Mention: Mickey Reichel Auction when calling the  Isle of Capri Casino Hotel: 660-882-1200
Days Inn: 660-882-8624 • Comfort Inn: 660-882-5317 • Super 8: 660-882-2900 • Holiday Inn: 660-882-6882

Auction Consists of Rarity, Great Irid. and Variety

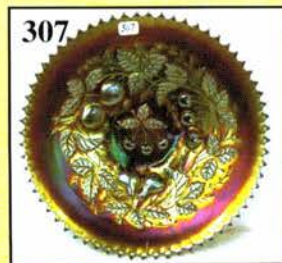
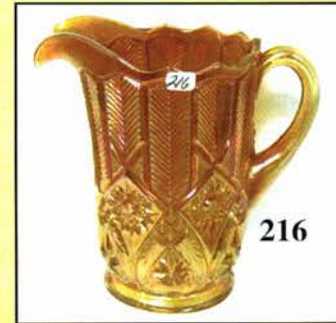
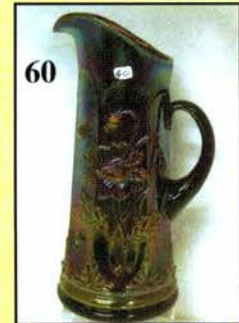
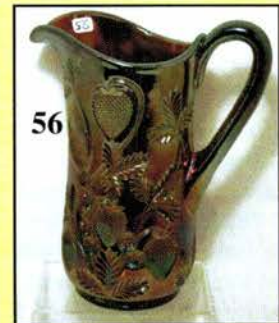
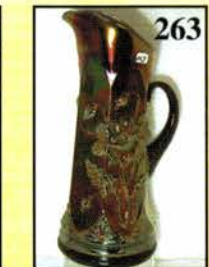
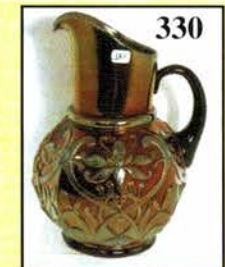
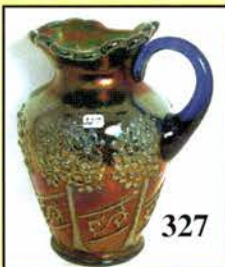
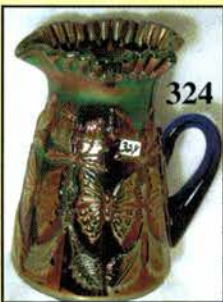
- | | |
|---|--|
| _____ 1. M - 10" Long Thumbprint Vase | _____ 13. M - 10-1/2" April Showers Vase |
| _____ 2. G - 10" Long Thumbprint Vase | _____ 14. B - 13-3/4" April Showers Vase - 5" Opening - Neat |
| _____ 3. G - 11-1/2" Long Thumbprint Vase | _____ 15. P - 10-3/8" April Showers Vase |
| _____ 4. A - 11" Long Thumbprint Vase | _____ 16. M - 13" April Showers Vase |
| _____ 5. A - 10-1/4" Long Thumbprint Vase | _____ 17. P - 12-1/2" April Showers Vase w/Int. Peacock Tail Pattern |
| _____ 6. A - 7-1/2" Long Thumbprint Vase | _____ 18. G - 9-3/4" April Showers Vase w/Int. Peacock Tail Pattern |
| _____ 7. M - 10-1/4" Diamond Pt. Columns Vase | _____ 19. P - 9" Ripple Vase - 3-3/8" Base, 6" Opening - Int. Flaw |
| _____ 8. Lime - 12-3/4" Diamond Pt. Columns Vase w/Marigold Overlay | _____ 20. Aqua - 15-1/8" Ripple Vase, 3-3/8" Base, 5-1/2" Opening - Unusual Size/Color |
| _____ 9. G - 10-5/8" Diamond Pt. Columns Vase | _____ 21. M - 8-1/2" Ripple Vase - 2-1/2" Base |
| _____ 10. M - 5-3/4" Squatty Diamond Pt. Columns Vase - 3-1/2" Base, 4-1/2" Opening | _____ 22. M - 6-1/2" Squatty Imp. Ripple Vase - 2-7/8" Base, 5" Opening |
| _____ 11. M - 6-5/8" Squatty Diamond Pt. Columns Vase - 3-1/2" Base, 4-1/2" Opening | |
| _____ 12. M - 10-3/8" Tulip Top, Diamond/Rib Vase | |

- _____ 23. M - 7-7/8" Ripple Vase - Pinched Spout Top
- _____ 24. **Elec. P - 9" Ripple Vase - 2-7/8" Base, 4-3/4" Opening**
- _____ 25. P - 9-3/8" Ripple Vase, 2-3/8" Base - Rim Peeling
- _____ 26. **G - 9" Ripple Vase - 2-7/8" Base, 4-1/2" Opening**
- _____ 27. Radium M - 8-3/8" JIP Curled Rib Vase - A Beauty
- _____ 28. **Smoke - 7-3/4" Morning Glory Bud Vase - Scarce**
- _____ 29. Dk. M - 6-3/8" Morning Glory Bud Vase
- _____ 30. **Smoke - 4-1/4" Tall Rococco Vase - Very Nice**
- _____ 31. M - 4-1/4" Tall Rococco Vase - Dark & Pretty
- _____ 32. **Outstanding B - 18-5/8" Rustic Funeral Vase - 5-1/8" Base, 7-1/2" Mouth (Hot Item)**
- _____ 33. Pumpkin M - 18" Rustic Funeral Vase - 5-1/8" Base, 8" Mouth (Another Big Boy)
- _____ 34. **P - Imp. Grape Water Pitcher w/4 Tumblers - Extra Nice**
- _____ 35. M - Imp. Fashion Water Pitcher
- _____ 36. **Beautiful G - Imp. Tiger Lily Water Pitcher**
- _____ 37. Pretty M - Tiger Lily Water Pitcher w/5 Tumblers
- _____ 38. **Rare P - 9-3/4" Tall Octagon Water Pitcher - Its Pretty!**
- _____ 39. M - 9-3/4" Tall Octagon Water Pitcher
- _____ 40. **P - Diamond Lace Water Pitcher w/4 Tumblers - Always in Demand**
- _____ 41. Soft M - Lattice/Grape Tankard Pitcher
- _____ 42. **Pumpkin M - Lattice/Grape Tankard Pitcher**
- _____ 43. Rich M - Lattice/Grape Tumbler
- _____ 44. **M - Lattice/Daisy Tankard Pitcher w/6 Tumblers**
- _____ 45. B - Enameled Cherries, Cannonball Pitcher w/5 Tumblers
- _____ 46. **M - Enameled Crocus Inter. Drape Cannonball Pitcher w/5 Tumblers**
- _____ 47. Outstanding M - Enameled Forget-Me-Not Tankard Pitcher w/5 Tumblers
- _____ 48. **Rare Ice Green - Enameled Crocus Inter. Drape Cannonball Pitcher w/6 Tumblers (1 w/chip)**
- _____ 49. Pretty M - Floral/Grape Fenton Bulbous Water Pitcher
- _____ 50. **Elec. B - Floral/Grape Fenton Bulbous Water Pitcher**
- _____ 51. Rare P - Stork in Rushes Beaded Top Water Pitcher - Base Nicked
- _____ 52. **B - Lattice Top Stork in Rushes Pitcher w/4 Tumblers - Difficult to Come By**
- _____ 53. Rich M - Dugan Vineyard Bulbous Pitcher w/4 Tumblers
- _____ 54. **Scarce B - Dugan Rambler Rose Bulbous Water Pitcher w/5 Tumblers**
- _____ 55. Pretty M - Heavy Iris Tankard Water Pitcher
- _____ 56. **Scarce P - Inverted Strawberry Tankard Water Pitcher**
- _____ 57. B - Wide Panel Thistle Water Pitcher - Chips on Handle
- _____ 58. **B - Wide Panel Thistle Tumbler**
- _____ 59. M - N Raspberry Water Pitcher - Light Irid.
- _____ 60. **Purple - Oriental Poppy Tankard Pitcher - Electric Irid.**
- _____ 61. B - Birds/Cherries Card Tray - Bonbon
- _____ 62. **W - Pond Lily Card Tray - Bonbon**
- _____ 63. G - N Paneled Holly Handled Candy Dish
- _____ 64. **Vaseline - Persian Medallion Bonbon - Scarce and Beautiful**
- _____ 65. Beautiful M - Cherry Circles Lge. Bonbon
- _____ 66. **Rare Aqua - Lge. Cherry Circles Bonbon**
- _____ 67. Beautiful B - Lge. Cherry Circles Bonbon
- _____ 68. **B - Scarce Lge. Persian Medallion, C.R.E Compote**
- _____ 69. Peach Opal - 6-1/2" Starfish Ruffled Compote
- _____ 70. **Great M - Hearts/Flowers Compote**
- _____ 71. P - N Butterfly/Rays Bonbon
- _____ 72. **Extra Nice W - Constellation Ruffled Compote**
- _____ 73. B - Orange Tree, Sm. Whimsey Compote from Wine
- _____ 74. **BA - C.R.E Ruffled Folding Fan Compote - 1st I've Seen**
- _____ 75. Elec. B - Fruits/Flowers Stemmed Bonbon
- _____ 76. **Aqua Base - 2 Row O.E. Basket - Neat Color**
- _____ 77. B - 6", 2 Sides Up O.E. Basket
- _____ 78. **Powder B - 7-1/4" Blackberry, 2 Sides Up O.E. Basket**
- _____ 79. M - 5-1/2" Adv. John Brand Furniture, 2 Sides Up O.E. Basket
- _____ 80. **Red Amberina - JIP 2 Row O.E. Basket**
- _____ 81. Beautiful Red - Ruffled 9" Fenton Holly Bowl - Tip Chip
- _____ 82. **Scarce Red - 6" Ruffled Blackberry Spray Hat (2 Sets of Berries)**
- _____ 83. Red - JIP, C.R.E. Blackberry Spray Hat - 7-1/2"
- _____ 84. **Outstanding Red - Orange Tree, 2-1/2" Base Mug w/3-1/2" Opening**
- _____ 85. Dk. M - JIP Ftd. Horse Medallion Bowl
- _____ 86. **Scarce Red - Ftd. Horse Medallion Nut Bowl**
- _____ 87. B - 7" Ruffled Horse Medallion Bowl
- _____ 88. **Great G - JIP, Ftd. Medallion Bowl**
- _____ 89. Lime Vaseline - Ftd., JIP Horse Medallion Bowl
- _____ 90. **Yellow Amber - 9", 2 in 1 Edge Fenton Holly Bowl - Unusual Color - Honey Amber?**
- _____ 91. B - 7" Leaf Chain Bowl
- _____ 92. **P - Dugan 7 Ruffle Holly Berry Nappy**
- _____ 93. Clam - 8-1/2" I.C.S. Leaf Chain Bowl
- _____ 94. **Fantastic G - 9" Ruffled Peacock/Grape Bowl**
- _____ 95. M - 8-3/4" Ruffled Dragon/Lotus Bowl
- _____ 96. **A - 8", 3 in 1 Deep Ribbon Tie Bowl**
- _____ 97. M/Clear - 9" Dugan Twigs Bud Vase
- _____ 98. **P - 8-1/4" Dugan Twigs Bud Vase - Scarce & Pretty**
- _____ 99. M - 8-3/4" Dugan Twigs Bud Vase
- _____ 100. **Awesome P - Multi Elec. 11", 3 in 1 Farmyard Bowl - Professional Repaired Tip - Still a Stunning Item**
- _____ 101. Dk. M - Spat. Ftd. Stag/Holly Bowl
- _____ 102. **M - 10-1/2", ICS Ball Ftd. Stag/Holly - Always Desirable**
- _____ 103. Lime Vaseline - 10-1/2" ICS Ball ftd. Stag/Holly Bowl - No Irid.



- _____ 104. **Gorgeous M - 12" Ball Ftd. Stag/Holly Chop Plate - Outstanding Piece**
- _____ 105. Red - 8" Ruffled Stag/Holly Bowl w/Yellow Amberina Spat. Feet - WOW!
- _____ 106. **PO - 10", Low 8 Ruffle Garden Path Vt. Bowl - Soda Gold Exterior**
- _____ 107. Radium M - 9" Fenton Spat. Ftd. Grape/Cable Plate - Great Example
- _____ 108. **Rich M - 16-1/2" Mid Size Hobnail Vt., Rustic Vt. Vase, 9 Flame Tips - 4" Base**
- _____ 109. G - 16-1/4" Rustic Mid Size Vase - 10 Tips - 4" Base
- _____ 110. **M - 17-1/8" Nine Sixteen Fenton Vase**
- _____ 111. M - 16-7/8" Nine Sixteen Fenton Vase
- _____ 112. **M - 15-3/4" Nine Sixteen Fenton Vase**
- _____ 113. M - 15-1/2" Fenton Fine Rib Vase
- _____ 114. **Deep Red - Fenton 12" Fine Rib Vase - Unusual Silver Mirrored Irid.**
- _____ 115. Russet - N 11" Thin Rib Vase
- _____ 116. **Aqua - Westmoreland JIP Corinth Vase**
- _____ 117. PO - Dugan 8-3/4" Wide Rib Vase
- _____ 118. **P - Spiralex Diamond 10-1/2" Vase**
- _____ 119. PO - 12-1/4" Pulled Loop Vase
- _____ 120. **P - 12-1/4" Pulled Loop Vase - Radium Finish**
- _____ 121. M - 11-1/4" Pulled Loop Vase
- _____ 122. **PO - 12-1/2" Target Vase**
- _____ 123. M - 8-1/2" Lattice/Points Vase - Daisy in Base
- _____ 124. **Cobalt B - 7-1/2" Paneled Diamonds/Bows Vase**
- _____ 125. M - Mary Ann 2 Handled Vase
- _____ 126. **M - Boggy Bayou, 4-5/8" Squatty Vase - 3-1/2" Base, 4-3/4" Opening - Neat Size**
- _____ 127. M - 7-3/4" Rd. Deep Garden Path Vt. Bowl
- _____ 128. **A - 8", 10 Ruffle, Ftd. Dugan Cherries Bowl**
- _____ 129. PO - 9", Low, 10 Ruffle Fanciful Bowl
- _____ 130. **Honey Amber - 9-1/4", 10 Ruffle Double Stemmed Roses Bowl**
- _____ 131. M - 8-1/2", 6 Ruffle Pony Bowl
- _____ 132. **A - 8-1/2", 6 Ruffle Pony Bowl**
- _____ 133. P - 8-3/4", 10 Ruffle Apple Blossom Twigs Bowl - Multi Elec.
- _____ 134. **P - Fish Net Epergne - CRE Lily for Insert - Hard to Find?**
- _____ 135. Lge. PO - 11" Round Persian Garden Bowl - Beautiful Item
- _____ 136. **Elec. P - 11" Round Persian Garden Bowl**
- _____ 137. PO - Lge. 10-3/4" Low 8 Ruffle Petal/Fan Bowl
- _____ 138. **RARE P - 11-1/4" Garden Path Vt. Chop Plate w/Soda Gold Exterior**
- _____ 139. M - Butterfly/Tulip Ftd. Fruit Bowl - Light Irid.
- _____ 140. **Dugan B - 8-3/4" Flat Round-Up Plate**
- _____ 141. P - 11", 6 Ruffle Victorian Bowl - Seldom Seen
- _____ 142. **P - 11" Wishbone/Spades Chop Plate - Magenta/Gold Radium Overtones - Outstanding**
- _____ 143. BA - Fishermans Mug
- _____ 144. **M - Fishermans Mug**
- _____ 145. A - Beaded Shell Mug
- _____ 146. **Dark A - Beaded Shell Mug**
- _____ 147. Pumpkin M - 11" Sq., 8 Ruffle Ball Ftd. Two Flowers Bowl
- _____ 148. **M - 10-1/2" Ftd. I.C.S. Chrysanthemum Bowl - Outstanding Blue/Yellow Irid.**
- _____ 149. M - Fruit Band Liquor Bottle w/7 Cordials - No Stopper, Still a Rarity
- _____ 150. **BA - 9-1/2", 12 Ruffle Australian Kingfisher Bowl**
- _____ 151. M - Australian, 5-1/4" Ruffled Swan Bowl
- _____ 152. **M - Tulip/Cane - 3-3/4" Tall Cordial**
- _____ 153. M - Rising Sun Juice Glass
- _____ 154. **M - Pineapple/Fan Decanter w/5 Wines & Underplate - Great Find**
- _____ 155. B - Omibus Tumbler
- _____ 156. **Scarce Beautiful M - Zipper Loop Finger Lamp**
- _____ 157. G - Novelty, Little Barrel Bottle - Normal Nicks on Opening
- _____ 158. **Smoke - Little Barrel Novelty Bottle**
- _____ 159. M - Little Barrel Novelty Bottle
- _____ 160. **M - Little Barrel Novelty Bottle**
- _____ 161. G - 4-3/4" Novelty Corn Bottle
- _____ 162. **Smoke - 4-3/4" Tall Novelty Corn Bottle**
- _____ 163. M - 4-3/4" Tall Novelty Corn Bottle
- _____ 164. **M - Stippled Robin Mug - Old & Nice**
- _____ 165. Clam - 5-1/2" Ruffled Imp. Scroll Embossed Little Bowl - Radium, File Exterior
- _____ 166. **Elec. P - 5-1/2" Ruffled Imp. Scroll Embossed Bowl - File Exterior**
- _____ 167. P - Imp. Ruffled Cobblestone Bowl
- _____ 168. **Fantastic M - Imp. 9" Ruffled Pansy Bowl**
- _____ 169. P - 8-3/4" Imp. Ruffled Pansy Bowl
- _____ 170. **Rare Elec. P - 8-1/2" Rnd. Ftd. Double Dutch Windmill Bowl**
- _____ 171. M - Pair of Premium Candlesticks
- _____ 172. **M - 7" Pair of 6 Sided Candlesticks**
- _____ 173. M - 7" Single 8 Sided Candlestick
- _____ 174. **Spectacular P - 10" Ruffled Imp. Heavy Grape Bowl**
- _____ 175. M - Hen/Chick Covered Dish
- _____ 176. **B - Hen/Chick Covered Dish**
- _____ 177. Scarce P - Pastel Swan Salt - Chip on Wing
- _____ 178. **Celeste B - Pastel Swan Salt**
- _____ 179. Florentine Vaseline - Pastel Swan Salts - 2 x \$
- _____ 180. **Powder Blue Opal - Pastel Swan Salt - Non Irid.**
- _____ 181. P - Dugan Many Fruits, Beautiful Punch Bowl w/Broken Base
- _____ 182. **P - Many Fruits Punch Cups - 4 x \$**
- _____ 183. P - N Acorn Burrs Punch Bowl/Base w/6 Cups
- _____ 184. **WOW! P - Master Grape/Cable Punch Bowl & Base w/9 Cups - Dream Find**
- _____ 185. M - Persian Medallion Ftd. Small Grape/Cable Fruit Bowl - Extra Nice
- _____ 186. **Lav. Opal - 7-3/4", 8 Ruffle Fenton Acorns Bowl - Soft Marigold Overlay**
- _____ 187. Ice Green Stretch - 9-1/2" Flared Bowl - GLOWS
- _____ 188. **Scarce Red - Fenton Vintage Grape Ftd. Nut Bowl - Great Example**
- _____ 189. Beautiful W - Puzzle Banana Shape Bonbon - Floral Wheat Exterior
- _____ 190. **G - Adv. Double Stamped Horlacher, 7-1/4" Peacock Tail Bowl**

191. Outstanding A - 6-1/8" Norris N. Smith Real Estate Adv. Plate - Great Rarity
192. **M - 10 Ruffle Brooklyn Bridge Bowl**
193. Scarce G - 7-1/4" Ruffled 1910 Detroit Elks Bowl
194. **A - ISAAC Benesch & Sons Adv. 6" Bowl**
195. Lav. - N, 6-1/4" Fern Brand Chocolates Card Tray Shaped Plate
196. **G - 8-3/4" Stippled Grape/Cable Vt. Plate w/Old Rose Distilling Adv. - Chip Tip**
197. Shriners Champagne Glass - 1909 Louisville, Kentucky
198. **Shriners Champagne Glass - 1911 Rochester, NY**
199. B - Fenton Miniature Blackberry Compote
200. **RARE Tangerine Opal - 6-1/4" Blackberry Spray Ruffled Bowl - Outstanding Find**
201. B - 6-1/4" Cherry Chain Plate - Orange Tree Exterior
202. **Great M - 6" Cherry Chain Plate - Orange Tree Exterior**
203. B - Orange Tree Powder Dish w/Lid
204. **Fantastic M - 9-1/2" Orange Tree w/Trunk Plate**
205. B - 9-1/4" Orange Tree Plate w/Trunk Center
206. **B - 9-1/4" Fenton Peacock/Urn Plate - A Favorite**
207. Dk. M - Kittens Cup/Saucer
208. **M - Mlbg. 6-1/4", 12 Ruffle Holly Sprig Bowl - Scarce Size, Shape**
209. M - Mlbg. 9-7/8" ICS Hanging Cherries Bowl
210. **G - Mlbg. Ruffled Trout/Fly Bowl - Lots of Color**
211. A - Mlbg. 3 in 1 Trout/Fly Bowl - Worn Center
212. **P - Mlbg. Sea Coast Pin Tray - Nick on Back, Still Extremely Popular**
213. G - Mlbg. Sunflower Pin Tray
214. **A - Mlbg. Diamond Water Pitcher**
215. Radium A - Mlbg. Diamonds Tumblers - Choice A, B or C
216. **M - Mlbg. Feather/Heart Water Pitcher - Extra Fine Example**
217. A - Mlbg. 9-1/2" Ruffled Primrose Bowl - Radium
218. **M - Mlbg. Dome Base, 3 in 1 Fleur De Lis Bowl - Radium Normal - Little Base Nick**
219. P - Mlbg. Hanging Cherries Cream Pitcher
220. **Beautiful P - Mlbg. Hanging Cherries Butter Dish w/Lid**
221. P - Mlbg. Hobnail Cuspidor
222. **P - Mlbg. Hobnail Swirl Rosebowl**
223. M - Mlbg. 7-1/2" Ruffled Little Stars Bowl
224. **A - Mlbg. 7-3/4" Ruffled Little Stars Bowl**
225. G - Mlbg. 7-3/4" Ruffled Little Stars Bowl
226. **Beautiful M - 8-3/4" Mlbg. Ruffled Sea Weed Bowl**
227. P - Mlbg. Holly Sprig Card Tray Bonbon - Super Radium
228. **P - Mlbg. 6-1/2" Tri Corner Holly Sprig Bowl - Little Rarity**
229. G - Mlbg. 7" Holly Sprig, Two Sides Pulled High Bonbon
230. **P - Mlbg. 6-1/2" Ruffled Strawberry Wreath Compote - Fantastic Radium Colors**
231. P - Mlbg. 5-1/2" ICS Blackberry Wreath Bowl
232. **P - Mlbg. 3 Ftd. Dolphins Bowl w/Rosalind Interior - Few Known**
233. P - Mlbg. 9-1/2" Ruffled Rays/Ribbons Bowl
234. **P - Mlbg. 9-1/2" Low Ruffle Peacock Lge. Mold Bowl**
235. Radium M - Mlbg. Ruffled Nesting Swan Bowl
236. **G - Mlbg. Ruffled Nesting Swan Bowl**
237. A - Ruffled Mlbg. Courthouse Bowl - Radium
238. **P - Mlbg. 10" Ruffled, 6 pt. Many Stars Bowl - Radium**
239. P - Mlbg. 10" Ruffled Grape Leaves Bowl - Radium
240. **G - Inverted Feather Cambridge Cracker Jar w/Lid**
241. Shriners Champagne, 1909 Louisville, Kentucky Tob. Leaf Base
242. **Shriners Champagne 1910 New Orleans**
243. G - N PCE Grape/Cable Bowl
244. **P - N 9" Grape/Cable Plate - BW Exterior - Elec. Irid.**
245. Outstanding P - N Grape/Cable Sugar Bowl w/Lid
246. **Outstanding P - N Grape/Cable Butter Dish w/Base**
247. P - N Grape/Cable Breakfast Cream/Sugar
248. **Scarce G - N Grape/Cable Cologne Bottle w/Stopper**
249. G - N Grape/Cable Oval Pin Dish
250. **P - N Grape/Cable 5" Rnd. Stemmed Sherbet**
251. P - N Grape/Cable Water Pitcher w/6 Tumblers
252. **P - N Grape/Cable Sweet Meat Compote - Tiny Base Nick**
253. P - N Grape/Cable Hat Pin Holder
254. **M - N Grape/Cable Candlesticks - 1 With Top Chip**
255. P - N Grape/Cable Whiskey Decanter w/No Stopper
256. **P - N Ivy Town Pump - Repaired Tips - But a Real Beauty**
257. Dk. IB - Grape Arbor Tankard Water Pitcher - Flawed Rim
258. **P - N Grape Arbor Tankard Pitcher w/4 Tumblers**
259. M - N Grape Arbor Tankard Pitcher w/5 Tumblers
260. **W - Frosty N Grape Arbor Tankard Pitcher Only**
261. P - N Acorn Burr Water Pitcher w/4 Tumblers
262. **Scarce P - N Dandelion Tankard Water Pitcher**
263. Radium P - N Oriental Poppy Tankard Water Pitcher
264. **M - Blackberry Block Tankard Water Pitcher - Crack by Handle**
265. M - Butterfly/Berry, 7 pc. Water Set
266. **G - N Raspberry Milk Pitcher**
267. P - N Raspberry Milk Pitcher
268. **M - N 6-1/2" Squatty Feathers Vase - 5" Opening - WOW!**



269. G - N Corn Vase - Stalk Base
270. **W - N Corn Vase w/Stalk Base**
271. M - N 9-3/4" Tree Trunk Vt. Vase w/Square Top
272. **G - N 10-1/4" Tree Trunk Vt. Vase w/Square Top**
273. P - N 10-3/4" Tree Trunk Vt. Vase
274. **G - N 9-1/2" Thin Rib Vt. Vase**
275. M - 9" Butterfly/Berry Vase
276. **B - 9" Butterfly/Berry Vase - Tip Peeled**
277. B - 9" Butterfly/Berry Vase - Tip Peeled
278. **Deep B - 11-1/4" Plume Panels Vase - Very Pretty**
279. B - 9-1/4" C.R.E. Knotted Beads Vase
280. **M - 6" Summer Days Vase**
281. P - 9" Wm. Flute Vase
282. **Teal - Rooster Hatpin - Popular Item**
283. BA - Top O' the Morning Hatpin
284. **Elec. B - Gilt Trim Hatpin**
285. Oval Milkglass Faceted Hatpin
286. **Rainbow Iridized Hatpin - Pattern?**
287. P - N Singing Birds Mug - Multi Electric
288. **P - N 6-1/4" Wild Strawberry Vt. Ruffled Bowl - Spectacular Irid.**
289. P - N Beaded Cable Rosebowl - Multi Elec.
290. **P - P.C.E. Good Luck Bowl, BW Exterior - Elec. Blue Irid.**
291. Outstanding P - N Spat. Ftd. 3 Fruits Medallion Bowl
292. **P - 9" Good Luck Plate w/BW on Back - Amazing Irid.**
293. M - Ruffled Good Luck Bowl w/BW Exterior
294. **B - Ftd. Ruffled Wishbone Bowl - Vibrant Rarity**
295. P - Ftd. Ruffled Wishbone Bowl
296. **Emerald G - 9-1/4" Four Flowers Vt. Plate - Great Addition**
297. Unusual A - N Spat. Ftd. Sunflower Bowl
298. **Shimmering M - 9" N Peacocks Plate**
299. M - PCE Peacocks Bowl - Beautiful Birds
300. **Scarce Horehound - N 9" Peacocks Plate - Factory Spotting**
301. Stunning B - N Peacocks Ruffled Bowl - Nick Between Points - Electric
302. **BO - Non Irid Ruffled N Peacocks Bowl**
303. P - N Spat. Ftd. 3 Fruits Medallion Bowl
304. **RARE Violet - N 9" Stippled 3 Fruits Plate - Factory Spotting**
305. Pretty A - 9-1/4" N Stippled 3 Fruits Plate
306. **P - N 9", 3 Fruits Vt. Plain Backed Plate - Shimmering with Irid.**
307. P - N 9-1/4", 3 Fruits Plate w/BW Exterior - Very Impressive
308. **Soft M - N 9" Stippled 3 Fruits Plate**
309. Unusual A - N 8-3/4", 8 Ruffle Grape Leaves Bowl
310. **G - N 9" Strawberry Plate w/BW Ext. - Great**
311. B - N 9-1/4" Rose Show Plate - Multiple Irid. - WOW!
312. **Scarce P - N Poppy Show Bowl w/Blue, Purple & Gold Irid.**
313. Pumpkin M - N Poppy Show Plate - Vibrant
314. **IB - N 9-3/4" ICS Peacock & Urn Bowl - Very Impressive**
315. AO - N Rd. Bushel Basket - Fantastic Marigold Int.
316. **Pastel AO - N Rd. Bushel Basket - Exquisite**
317. AO - 9-1/2" Four Pillar Vase - Normal Toe Nicks - Beauty
318. **Pastel AO - Daisy & Drape Vase - Dashing**
319. AO - Leaf Beads Rosebowl - Marigold Int. Irid.
320. **Pastel AO - Dandelion N Mug - Truly Beautiful**
321. Pastel AO - N Stippled Three Fruits Med. Spt. Ftd. Bowl - Bouquet of Irid.
322. **Scarce AO - Fenton 7" Ruffled Vintage Grape Bowl**
323. White - Floral & Grape Water Pitcher - Pastel Beauty
324. **Radium B - Butterfly & Fern Water Pitcher - A Prize**
325. Radium M - Apple Tree Water Pitcher - High Rating
326. **B - Bouquet Water Pitcher - A Real Find - WOW!**
327. B - Orange Tree Orchard Pitcher - Another Beauty
328. **M - Pumpkin Blueberry Water Pitcher - Never need to upgrade if you own this one**
329. M - Pumpkin Fluffy Peacock Water Pitcher - Gorgeous
330. **P - N Wishbone Pitcher - Very Scarce**
331. P - N Peacock at Fountain Pitcher & 4 Tumblers - Very Scarce
332. **W - Gold Trim N Peacock at Fountain Water Pitcher**
333. Rare Purple - Beaded Stork N' Rushes Water Pitcher
334. **Blue - N Show Stopper Peach Pitcher & 5 Tumblers - Elec.**
335. P - N Dandelion Tumblers - 2 x \$
336. **M - N Oriental Poppy Tumblers - 3 x \$ - Nice Ones**
337. P - N Raspberry Tumbler
338. **M - N Raspberry Tumblers - 2 x \$**
339. P - N Grape Arbor, Pl. Int. Tumbler
340. **P - Heavy Iris Tumblers 3 x \$ - Real Pretty Pattern**
341. B - Dugan Peacock at Fountain Tumbler
342. **Scarce P - Dugan Peacock at Fountain Tumbler**
343. P - Beaded Shell Tumbler
344. **M - Imp. Octagon Tumblers - 3 x \$**
345. P - Floral & Grape Tumblers Scarce Color
346. **Beautiful Blue - Orange Tree Orchard Tumbler**
347. (4) Pumpkin - Blackberry Block Tumblers - Matching - 1 Chipped - 3 x \$
348. **Blue - Butterfly & Fern Tumblers - 3 x \$**
349. M - Appletree Tumblers - 6 x \$ - Well Matched
350. **M - Golden Wedding Whiskey Bottles - 1/10 Pt., Pint & Quart - One Price**
351. M - Jackman 1/2 Pt. Whiskey Bottle
352. **M - Canada Dry Bottle**
353. M - Sun Punch Soda Bottle

- _____ 354. M - Mellow Rib Salt & Pepper Set
- _____ 355. M - Butterfly Pin Dish - Jeanette Co.
- _____ 356. M - Dugan "Big Basket" w/Handle - Large Piece
- _____ 357. M - Dugan Big Basket, Handled - Little Size
- _____ 358. M - Little Soda Gold Hld. Basket
- _____ 359. B - Orange Tree Punch Cup
- _____ 360. Dk. M - Orange Tree Wine
- _____ 361. M - Golden Harvest Wine
- _____ 362. A - Golden Harvest Wine (Scarce)
- _____ 363. M - Dia. and Sunburst Wine w/Flared Top

GREAT CONTEMPORARY ITEMS

- _____ 364. B - 7-1/2" Dagonhart Tomahawk - Scarce
- _____ 365. B - 3-1/4" Dagonhart Tomahawk - Scarce
- _____ 366. White Opal - Fenton Enamel Painted 5-3/4" Pitcher 1991 ICGA
- _____ 367. B - Cactus Salt or Pepper Shaker
- _____ 368. M - ICGA 1993 Frolicking Bears - Giant Shot Glass
- _____ 369. Plum Opal - Large Hdl. Fenton Holly Basket - 80's
- _____ 370. Plum Opal - 1997 ICGA Frolicking Bears - Giant Shot Glasses - Choice A or B
- _____ 371. Vaseline Green O - ICGA Frolicking Bears Cuspid
- _____ 372. Elec. B - HOACGA 2000, 8-3/4" Pansy Plate
- _____ 373. Fenton Lge. Honey Amber Poppy Show Vase - 12" Tall
- _____ 374. Fenton Lge. Elec. P - Poppy Show Vase, 12" Tall
- _____ 375. I.B. Opaline - Lge. Poppy Show Vase - 12" Tall
- _____ 376. Gorgeous Cranberry Opal - JIP, 14" Lge. Poppy Show Vase
- _____ 377. Elec. B - 12" Heavy Iris Lge. Vase, C.R.E. Top
- _____ 378. Elec B - Swung Hobnail 17" Fenton Vase
- _____ 379. Elec B - Swung Hobnail 6-7/8" Fenton Vase - Nice Mate to #378
- _____ 380. IB Opal - 8" Ruffled Pony Bowl (NEAT)
- _____ 381. Frosty W - 8" Ruffled Pony Bowl
- _____ 382. Custard M - 1988 Good Luck Loving Cup
- _____ 383. M - 1988 Good Luck Bell (No Dinger)
- _____ 384. Sapp. - 1989 Good Luck Bell - Complete

- _____ 385. Dk. B - Fenton, 4-1/4" Tall Bluebird Bell (No Dinger)
- _____ 386. Scarce Red - 1978 Good Luck Corn Vase

*DON'T MISS THIS TRULY FINE COLLECTION.
THEY HAD YEARS OF FUN PUTTING THIS TOGETHER!*

👉 AUCTION CALENDAR OF EVENTS

Saturday, February 24 @ 9:00 am
Ben and Flossie Smith Estate Auction
 Held at the Boonville Auction Gallery
60 Years of Antiques & Treasurers

Saturday, March 24 @ 9:00 am
Lifetime Collection & Shop Dispersal of Antiques & Collectables for Dianna Meyers
Huge Auction - Watch the Web Site

Saturday, April 14 @ 9:00 am
Carnival Glass Auction @ Boonville, MO
The Eddington Collection of Kansas & Vogt Collection of Iowa
Wide selection of Collections of neat Glass. WOW!

Saturday, May 19 @ 9:00 am
Carnival Glass Auction @ Boonville, MO
The Cunningham Collection of Colorado & The Spangler Collection of Kansas
Two more lifetime collections.

Saturday, June 16 @ 9:00 am
Carnival Glass Auction @ Boonville, MO
The Mitchell Collection of Kansas & The Hobart Collection of Nebraska

Saturday, July 14 @ 9:00 am
Carnival Glass Auction @ Boonville, MO
Quality Carnival Glass
You won't want to miss this spectacular selection.

BOOKING NOW FOR FALL 2007

👉 Call Today To Sell Your Fine Items
 660-882-5292 Day
 660-882-5283 Evening

SPECIAL NOTE:

NO SUNDAY CALLS, PLEASE!
 Winning Absentee Bidders will be contacted Monday through Wednesday of the week following the Auction!
 Thank You!

SEND ALL MAIL TO:

18350 Hunters Ridge Ct.
 Boonville, MO 65233

WATCH: 👉 Web Site: www.AWK.SHN.com

