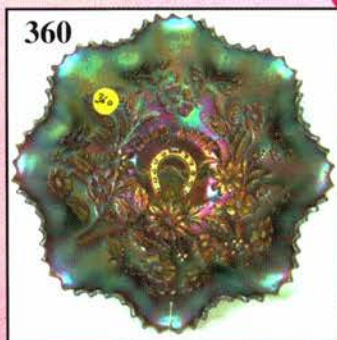
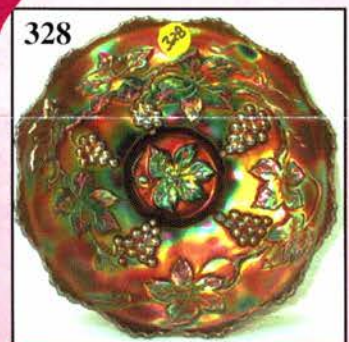
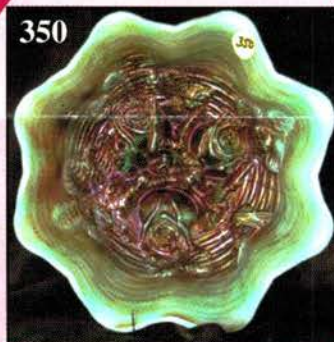
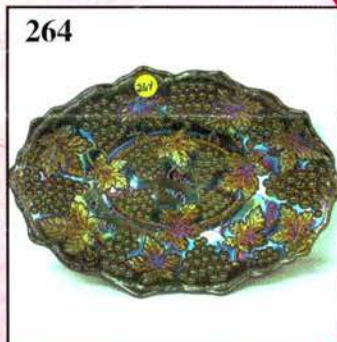
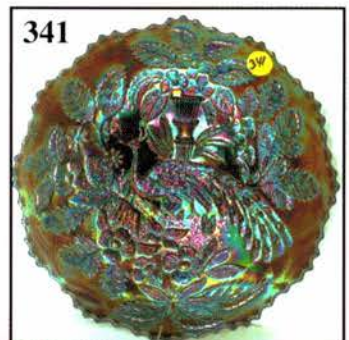
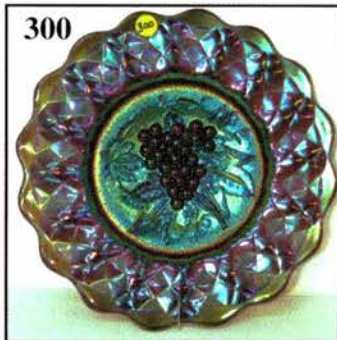


♥ **LIFETIME CARNIVAL GLASS AUCTION** ♥
Saturday, February 10, 2007 🖱️ **9:00 a.m.**
Sunday, February 11, 2007 🖱️ **9:00 a.m. (Snow Day Only)**

♥ **Helen Pragman Collection (500+ Items)** ♥



♥ **Held By the Mickey Reichel Antique & Auction L.C.** ♥
Office: 660-882-5292 • Home: 660-882-5283

🖱️ **NEW WEB SITE: www.AWK-SHN.com**

E-mail: mreichel@AWK-SHN.com

Held Inside the Mickey Reichel Auction Center

1 Mile North of I-70 on Hwy. 5, Exit 101, Boonville, Missouri • 20 Miles West of Columbia, MO on I-70



Preview Friday 12 p.m. - 5 p.m. and 7:30 a.m. - 9:00 a.m. Day of Auction



TERMS: Cash or Good Check, VISA and MasterCard accepted.

4% Clerking Fee on all purchases except for payment of cash or check. Proper I.D. required.

WEB SITE: www.AWK-SHN.com

ABSENTEE BID POLICY:

WRITE IN BIDS: If you are unable to attend the auction, we will be happy to accept absentee bids which must be received by THURSDAY, FEBRUARY 8, 2007. Don't Delay. **E-Mail: mreichel@AWK.SHN.com** ← ← ← ←

DIRECT ALL MAIL TO: 18350 Hunters Ridge Ct., Boonville, MO 65233-2971

PLEASE NOTE: There is a **\$5 handling charge for each successful bid which will be added to the selling price** for all write-in bids. This is in addition to the cost of postage, insurance and packing. Your write-in bid will be entered just as if you are present and bidding. **Successful bidders will be notified in 1 to 3 days by the auctioneer (so be sure to include your phone number).** Direct mail bids to Auctioneer Mickey Reichel, 18350 Hunters Ridge Ct., Boonville, MO 65233-2971. Terms: Cash or Check accepted with proper I.D. and Social Security Number and References. Announcements made day of the auction supercede all printed material. Not Responsible for Accidents or Sold Items.

No return on any items once they leave the Auction Center (No Exceptions).****

Call for additional information: 660-882-5292 days or 660-882-5283 evenings before 9:00 p.m.


FAX: 660-882-5292 (evening hours start FAX transmission after beep)

MAIL BIDS: Items are bid on in perfect condition with average or above iridescence OR as listed in the brochures. Bids will not be carried out when damage on an item has been found during the auction.

PEOPLE PRESENT AT AUCTION ARE RESPONSIBLE FOR FINDING ANY PINHEADS, WEAR, SPOTTINESS, MANUFACTURER'S DEFECTS OR ANY OTHER MINOR FLAWS, ETC. *****

NOTE: Read each line, as we have accentuated the type of no particular piece, all are special.

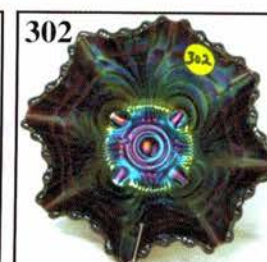
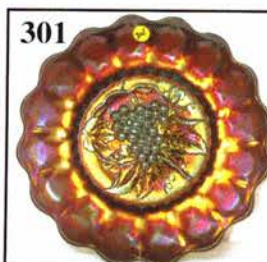
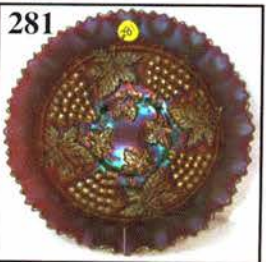
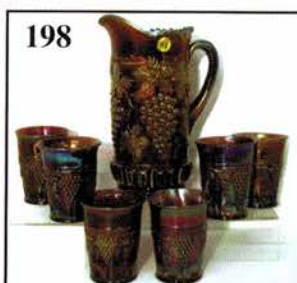
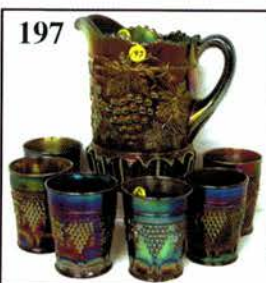
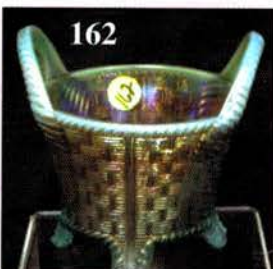
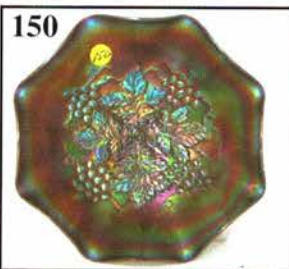
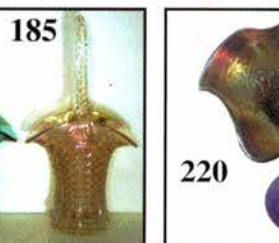
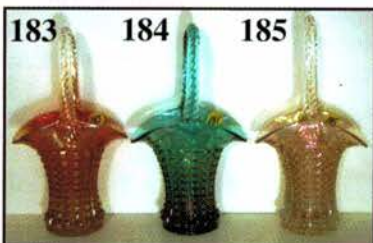
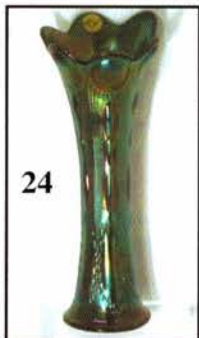
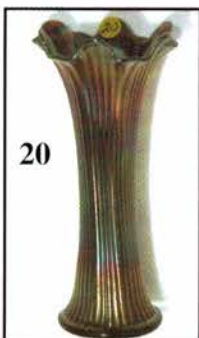
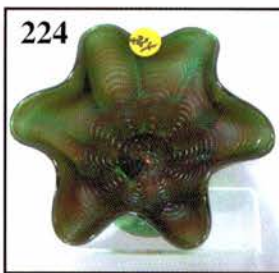
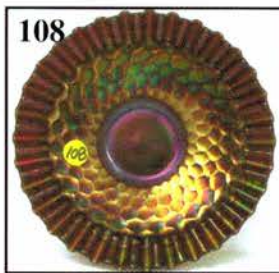
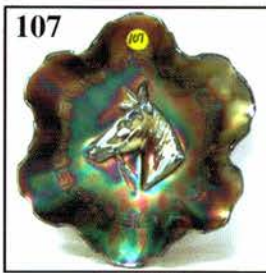
Make Reservations EARLY at one of these local motels:

Mention: Mickey Reichel Auction when calling the  Isle of Capri Casino Hotel: 660-882-1200
Days Inn: 660-882-8624 • Comfort Inn: 660-882-5317 • Super 8: 660-882-2900 • Holiday Inn: 660-882-6882

Auction Consists of Rarity, Great Irid. and Variety

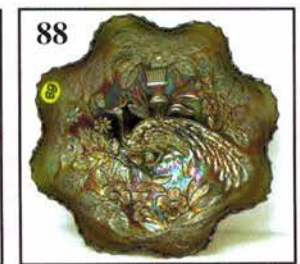
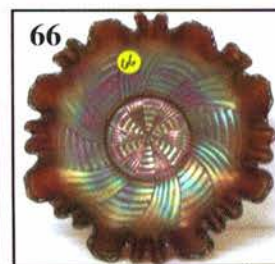
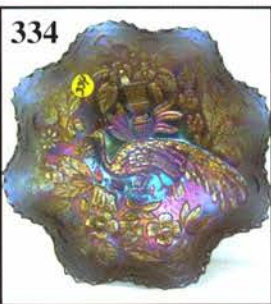
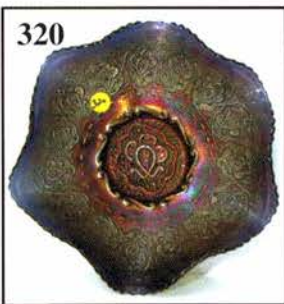
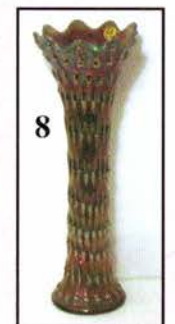
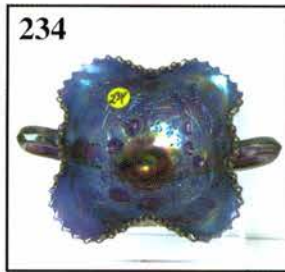
- | | |
|---|--|
| _____ 1. P - 8-3/4" Corinth Vase | _____ 14. P - Mary Ann Vase |
| _____ 2. G - 9-3/4" Diamond/Rib Vase - 2-3/4" Opening | _____ 15. M - Dugan, 8-3/4" Big Basketweave Vase |
| _____ 3. G - 10-1/2" Diamond/Rib Vase | _____ 16. Pastel AO - Daisy/Drape Vase - Beautiful |
| _____ 4. P - 11-1/4" Diamond/Rib Vase | _____ 17. M - Dk. 8", N Drapery Vase - Toe Chip |
| _____ 5. B - 12-1/4" April Showers Vase - Tiny Nick | _____ 18. G - N 5-3/4" Squatty Diamond Pts. Vase - 4-1/2" Opening - Great Size |
| _____ 6. M - 16", #916 Pattern Vase | _____ 19. M - 6-1/2" Squatty Diamond Pts. Vase - 5" Opening |
| _____ 7. M - 16", #916 Pattern Vase - Rim Nick | _____ 20. P - 10" N Fine Rib Vase |
| _____ 8. B - 15-3/8" Hobnail (Vt) Mid Size Vase - 4-1/8" Base, 5-1/2" Opening | _____ 21. G - 7-1/2" Squatty Tree Trunk (Vt) Vase |
| _____ 9. B - 9-1/2" CRE Rustic Vase | _____ 22. G - 11" Squatty Tree Trunk (Vt) Vase |
| _____ 10. P - 11-3/4" Knotted Beads Vase | _____ 23. P - N 11" Thin Rib Vase |
| _____ 11. B - 10" Fenton, Fine Rib Vase | _____ 24. Elec. P - Imp. 11-5/8" Beaded Bulls Eye Vase |
| _____ 12. B - 10-1/4" Fenton Fine Rib Vase | _____ 25. M - 7" Imp. Squatty Beaded Bullseye Vase - 5-3/4" Opening |
| _____ 13. M - Mary Ann Vase | |

- _____ 26. **G - 11" Ripple Vase - 3-3/8" Base**
 _____ 27. Rich M - Star Medallion Milk Pitcher
 _____ 28. **Radium Smoke - Star Medallion Pitcher**
 _____ 29. Pastel Radium Smoke - Star Medallion Pitcher
 _____ 30. **Scarce G - #474 Milk Pitcher**
 _____ 31. Radium M - #474 Milk Pitcher
 _____ 32. **M - Flute/Cane Milk Pitcher - Scarce 5-3/4" Tall**
 _____ 33. Rich M - Imp. Windmill Milk Pitcher
 _____ 34. **Radium Smoke - Imp. Poinsettia Milk Pitcher**
 _____ 35. Awesome Radium M - Poinsettia Milk Pitcher
 _____ 36. **Scarce G Helios - Poinsettia Milk Pitcher**
 _____ 37. Radium M - Poinsettia Milk Pitcher
 _____ 38. **Scarce G - N Raspberry Milk Pitcher**
 _____ 39. Pretty P - N Raspberry Milk Pitcher
 _____ 40. **Beautiful Rich M - Raspberry Milk Pitcher**
 _____ 41. M - Lea Sowerby Cream Pitcher
 _____ 42. **Scarce B - Brockwitz, Curved Star Cream Pitcher - Handle Nick**
 _____ 43. M - Sowerby Pineapple Cream Pitcher
 _____ 44. **Scarce A - Sowerby Pineapple Cream Pitcher**
 _____ 45. M - Split Diamond Cream Pitcher
 _____ 46. **Ultra Rare P - Radium Stork/Rushes Cream Pitcher - 1st I've Seen**
 _____ 47. B - Butterfly/Berry Cream Pitcher - Also Scarce
 _____ 48. **Great M - Orange Tree Ftd. Cream Pitcher**
 _____ 49. P - N Raspberry Sauce Boat - Normal Nicks on Foot
 _____ 50. **A - N Grape/Cable, Whimsey, Nappy from Punch Cup**
 _____ 51. M - N Whimsey Lustre Flute, Nappy from Punch Cup
 _____ 52. **Scarce M - Windflower Nappy/Gravyboat**
 _____ 53. PO - Leaf Rays Nappy, 1-1/4" of Opal
 _____ 54. **PO - Dugan Holly Berry Truffle Nappy**
 _____ 55. M - Mlbg. Nesting Swan Bowl - Super Satin
 _____ 56. **A - Mlbg. 8-3/4", 6 Ruffle Blackberry Wreath Bowl - Radium**
 _____ 57. M - Mlbg. 8-3/4", 6 Ruffle Blackberry Wreath Bowl - Radium
 _____ 58. **G - Mlbg. 10", 6 Ruffle Whirling Leaves Bowl - Very Pretty Radium**
 _____ 59. G - Mlbg. Deep Holly Sprig Bonbon - Pretty Radium
 _____ 60. **A - Mlbg. 9", 3/1 Mystery Peacock Bowl - Radium**
 _____ 61. A - Mlbg. Multi-Fruits Punch Cup - Great Example
 _____ 62. **G - Tight CRE, 8" Fenton Vintage Bowl - Neat Shape**
 _____ 63. A - Tight CRE, 8-1/2" Fenton Stippled Rays Bowl
 _____ 64. **M - Tight CRE, 7-3/4" Fenton Autumn Acorns Bowl**
 _____ 65. G - Tight CRE, 7-3/4" Fenton Captive Rose Bowl
 _____ 66. **A - 8" Deep. 3/1 Edge Ribbon Tie Bowl - Great Look**
 _____ 67. B - 9-1/4" Low Ruffle Ribbon Tie Plate?, Bowl?
 _____ 68. **G - 9-1/2", 3/1 Edge Persian Medallion Bowl - Scarce Color and Shape**
 _____ 69. B - 9", 3/1 Edge Fenton Holly Bowl
 _____ 70. **A - 8-1/4", 3/1 Edge Peacock Tail Bowl - Neat Looker**
 _____ 71. G - 8-1/2", 3/1 Edge Fenton Thistle Bowl
 _____ 72. **A - 8-1/4", 3/1 Edge Heart/Vine Bowl - Really Nice**
 _____ 73. G - 9", 3/1 Edge Fenton Stippled Rays Bowl
 _____ 74. **B - 8-1/4", 3/1 Edge Fenton Vintage Grape Bowl - Tiny Nick**
 _____ 75. B - 8-1/4", 3/1 Edge Fenton Autumn Acorns Bowl
 _____ 76. **G - 7-1/2" ICS Fenton Vintage Grape Bowl**
 _____ 77. B - 10" ICS Ftd. Stag/Holly Bowl - Base Chip
 _____ 78. **B - 9-3/4" Ruffled Ftd. Little Fishes Bowl - Scarce**
 _____ 79. M - 10" Ruffled Ftd. Poinsettia/Lotus Bowl
 _____ 80. **M - 9-1/4" ICS Ftd. Poinsettia/Lotus Bowl**
 _____ 81. B - Fenton Thistle/Waterlily Banana Bowl - Flawed Foot
 _____ 82. **Scarce M - Lge. Two Flowers Rose Bowl - Rare Size**
 _____ 83. M - 8-1/2" Rnd. Fenton Holly Bowl
 _____ 84. **Scarce A - 9-1/4" Fenton Holly Plate - Tiny Pin Point on Rim**
 _____ 85. B - 8-1/2" Rnd. Fenton Holly Bowl
 _____ 86. **B - 9-1/4" Fenton Peacock and Urn Plate - Silver/Light Pinks**
 _____ 87. Pretty M - 8-3/4" Square, 8 Ruffle Fenton Peacock and Urn Bowl
 _____ 88. **G - 8-1/2", 8 Ruffle Peacock & Urn Bowl - Scarce Color**
 _____ 89. G - 8-3/4" Rnd. Feathered Serpent, Lge., Berry Bowl
 _____ 90. **Outstanding M - 9-3/8" Orange Tree Plate**
 _____ 91. Pastel PO - 6-1/2" Dugan Ruffled Cherries Bowl
 _____ 92. **PO - 6-1/2", CRE, 6 Ruffle Ski Star/Compass Bowl**
 _____ 93. M - Question Mark Stemmed Bonbon/Compote
 _____ 94. **PO - 8-1/2" CRE Tri Corner Flowers/Frames Bowl - Extra Nice**
 _____ 95. Dk. PO - 6", 8 Ruffle Dugan Cherries Bowl
 _____ 96. **PO - 9", 10 Ruffle Raindrops Bowl**
 _____ 97. PO - Flat, 6-3/4", 4 Flowers Plate w/Plain Back
 _____ 98. **M - 6-1/2" Persian Garden/BW Plate**
 _____ 99. PO - 8-1/4" Low, Low, Rnd. Apple Blossoms Twigs Bowl/Plate
 _____ 100. **Elec. P - 9" Apple Blossoms Twig Plate - Great Example**
 _____ 101. B - 8-1/4", 10 Ruffle Windflower Bowl - Scarce Color - Neat Shape
 _____ 102. **M - 9" Windflower Plate**
 _____ 103. Beautiful M - 9-1/2" Ruffled Cosmos (Vt) Bowl
 _____ 104. **B - Dugan Grape Delight Nut Bowl**
 _____ 105. A - Grape Delight Nut Bowl
 _____ 106. **Scarce B - 8-3/4" Round Up Plate**
 _____ 107. Deep P - Ruffled Pony Bowl
 _____ 108. **Beautiful P - 7-1/2" CRE Honeycomb Plate**
 _____ 109. M - Vintage Wreath Rose Punch Cups - 2 x \$
 _____ 110. **M - Orange Tree Punch Cups - 4 x \$**
 _____ 111. A - N Grape/Cable Punch Cups - 4 x \$



112. **P - Acorn/Burrs Punch Cups - 2 x \$**
113. P - Memphis Punch Cup
114. **G - Grape/Cable Punch Cup - Silver Finish**
115. Scarce B - Stippled Grape/Cable Punch Cup
116. **M - Grape/Cable Punch Cup**
117. G - N Lustre Flute, Scarce, Punch Cup
118. **Rich A - Dugan Many Fruits Punch Cup**
119. M - Imp. Grape Punch Cup - Rib Int.
120. **M - Waffle Block Punch Cup**
121. B - Floral/Grape Tumbler - Pinpoint Nick
122. **M - Orange Tree, Ftd., Tumbler - Good Feet**
123. B - Lattice/Grape Tumbler - Outstanding
124. **Scarce B - Blueberry Tumbler**
125. B - Rambler Rose Tumbler - Very Pretty
126. **Dk. M - Beaded Shell Tumbler**
127. P - N Oriental Poppy Tumbler - Elec. Hilites
128. **G - N Oriental Poppy Tumbler - Scarce**
129. M - Grape Arbor Tumbler - Extra Nice
130. **Pumpkin M - Grape/Gothic Arches Tumbler**
131. Fantastic Pastel M - Grape/Gothic Arches Tumbler
132. **B - Grape/Gothic Arches Tumbler - Elec. Hilite**
133. Soft P - N Dandelion Tumbler
134. **Soft M - N Dandelion Tumbler**
135. P - N Acorn Burrs Tumbler
136. **Dk. M - N Acorn Burrs Tumbler**
137. P - Singing Birds Tumbler - Extra Nice
138. **A - N Raspberry Tumbler - Very Nice**
139. M - N Grape/Cable Tankard Size Tumbler
140. **Lav. - N Grape/Cable Tankard Size Tumbler**
141. M - Springtime Tumbler - Minor Base Roughness
142. **G - Mlb. Diamonds Tumbler**
143. B - Dugan Peacock/Fountain Tumbler
144. **B - Beaded Stork/Rushes Tumbler - Multi Elec.**
145. Clam - Imp. Tigerlily Tumbler
146. **Unusual G - Imp. Grape Tumbler**
147. M - Ftd. Wishbone Bowl
148. **G - Ftd. Ruffled Wishbone Bowl**
149. P - Ftd. Ruffled Wishbone Bowl
150. **P - N 9" Grape Leaves Ruffled Bowl - Rainbow Elec.**
151. M - 9" Grape Leaves Ruffled Bowl - Rim Chipped
152. **M - Whimsey Grape/Cable Ruffled Bowl from Tumbler**
153. G - Scarce Beaded Cable Ruffled 7-1/2" Ftd. Bowl
154. **M - 5-1/2" ICS N Peacock/Urn Bowl**
155. Pretty M - N Lustre Flute Hat
156. **G - N Lustre Flute Ruffled Hat**
157. G - N 7-1/2" Wild Rose Ftd. Bowl
158. **Scarce G - 7-1/2" Fruits/Flowers Bowl**
159. Dk. A - 7-1/2" Ruffled Leaf Center Grape/Cable Bowl
160. **Multi Elec. P - 9-3/4" N PCE Stippled Rays Bowl**
161. Beautiful M - N Rnd. Bushel Basket
162. **Pastel AO - N Rnd. Bushel Basket - Old Favorite**
163. B - N Rnd. Bushel Basket Elec. Hilites
164. **Scarce IG - Rnd. N Bushel Basket**
165. P - N Rnd. Bushel Basket
166. **G - N Rnd. Bushel Basket - Seldom Offered**
167. A - N Rnd. Bushel Basket - Pinhead on Handle
168. **Neat B - 8 Sided Bushel Basket**
169. G - Leaf/Beads Rosebowl - Plain Interior
170. **P - Leaf/Beads Rosebowl w/Sunflower Interior**
171. M - Leaf/Beads Rosebowl w/Sunflower Interior
172. **Dk. M - Fine Cut/Roses Rosebowl - Small Opening**
173. P - Fine Cut/Roses Rosebowl - Plain Interior
174. **M - Daisy/Plume (Blackberry Interior) Rosebowl**
175. P - Beaded Cable Rosebowl
176. **P - Grape Delight Rosebowl**
177. M - Wreath Rose Rosebowl
178. **Beautiful M - Persian Medallion Hair Receiver**
179. G - Louisa Rosebowl
180. **B - Garland Rosebowl**
181. Amber - Lustre Rose Rosebowl
182. **M - Lattice/Panel Interior, Violet Basket**
183. M - 9-1/4" Waffle Block, Handled Basket
184. **Saph. - 9-1/2" Waffle Block, Handled Basket - Rare Color**
185. Clam - 9-1/2" Waffle Block, Handled Basket
186. **M - 5-3/4", Handled Little Basketweave Basket**
187. M - Dugan, 2 Handled, Beaded Basket
188. **P - 3-3/4", 2 Sides Up, Hat Shape, Band Violet Vase**
189. P - N Raspberry Gravy Boat - Chipped Foot
190. **Dk. M - Imp. Lustre Rose, 7 pc. Water Set - Extra Lovely**
191. Deep P - Maple Leaf, 7 pc. Water Set - Nice Match
192. **M - Fashion, 7 pc. Water Set - Old Favorite**
193. Teal G - 7 pc. Imp. Tigerlily Water Set - Unusual Color
194. **M - Wine/Roses, 7 pc. Cider Set - Special Find**
195. M - Imp. Field Flowers, 7 pc. Water Set
196. **Beautiful B - Floral/Grape, 7 pc. Water Set - Eye Catcher**
197. Extra Nice P - Grape/Cable, 7 pc. Water Set
198. **Scarce P - N, 7 pc. Tankard Water Set - Very Difficult to Come By**
199. P - Maple Leaf, 7 pc. Water Set
200. **Rare G - Blackberry Water Pitcher - Very Attractive Item**
201. M - Fenton Waterlily, 7 pc. Water Set - Nice
202. **G - Double Star, 7 pc. Water Set - Good Looking**
203. G - N Raspberry Water Pitcher
204. **G - Paneled Dandelion Tankard Pitcher w/5 Tumblers - Cinder in Handle**
205. M - Floral/Grape, 7 pc. Water Set
206. **M - Butterfly/Berry Rnd., 7 pc. Ftd. Berry Set**
207. M - Fenton Butterfly Bonbon
208. **Pretty B - Persian Medallion Bonbon**
209. Dk. M - Persian Medallion Bonbon
210. **B - Fenton Two Fruits Divided Bonbon - Scarce**
211. M - Fenton Two Fruits Divided Bonbon
212. **G - Birds/Cherries Card Shaped Bonbon**
213. P - N Butterfly/Rays Bonbon
214. **Beautiful B - 7-3/4" Rnd. Cherry Circles Bonbon**

- _____ 215. B - 8-3/4" Card Shape Cherry Circles Bonbon - Seldom Offered
- _____ 216. **Dk. A - N Blackberry Ruffled Compote**
- _____ 217. P - N Ruffled Plain Jane Compote
- _____ 218. **P - N Daisy/Plume Plain Inter. Compote**
- _____ 219. A - N Daisy/Plume Plain Inter. Compote
- _____ 220. **Attractive B - N Hearts/Flowers Compote w/Rib Exterior**
- _____ 221. Frosty W - N Hearts/Flowers Compote - Plain Ext.
- _____ 222. **Dk. B - Fenton Ruffled Peacock/Urn Compote**
- _____ 223. G - Ruffled Wreath Rose Compote
- _____ 224. **G - Peacock Tail Ruffled Compote - Pretty Blue Irid. - Very Nice**
- _____ 225. B - C.R.E. Ruffled Captive Rose Compote
- _____ 226. **Dk. B - Fenton Stippled Rays, Handled Compote - Electric**
- _____ 227. B - C.R.E. Ruffled Scottish Thistle Compote
- _____ 228. **Aqua - Fenton Holly Ruffled Compote w/Marigold Irid.**
- _____ 229. B - Ruffled Fenton Holly Compote
- _____ 230. **Scarce P - Starfish, 2 Handled, Stemmed Compote**
- _____ 231. P - Westmoreland Leaf Swirl Ruffled Compote
- _____ 232. **P - Question Mark, 2 Handled Compote**
- _____ 233. Pumpkin M - N Fruits/Flowers Stemmed Bonbon
- _____ 234. **Elec. B - N Fruits/Flowers Stemmed Bonbon**
- _____ 235. Scarce M - Imp. Snow Fancy Cream/Sugar
- _____ 236. **M - Cambridge Inverted Strawberry Spooner - Great Find**
- _____ 237. M - Grape/Cable Butter Dish w/Lid
- _____ 238. **Radium M - Wreath Cherry Spooner**
- _____ 239. Outstanding M - Imp. Grape Decanter w/Stopper and 3 Wines
- _____ 240. **P - Imp. Grape Decanter w/Stopper & 2 Wines - Very Desirable**
- _____ 241. M - Octagon Decanter w/Stopper and 6 Wines - Pretty Set
- _____ 242. **Lustre Rose Creamer, Sugar & Butter Dish - One Price for All**
- _____ 243. P - Acorn Burrs Creamer, Sugar, Spooner & Butter Dish Set - One Price for All
- _____ 244. **M - Acorn Burrs Creamer, Sugar & Spooner - One Price for All**
- _____ 245. P - N Double Loop Open Sugar Bowl
- _____ 246. **Beautiful M - Curved Star Celery Vase**
- _____ 247. M - N Grape/Cable Creamer, Sugar, Spooner & Butter Dish - One Price - Most Popular Pattern
- _____ 248. **P - Grape/Cable 4 Place Table Setting**
- _____ 249. P - Grape/Cable Breakfast Creamer/Sugar Set
- _____ 250. **Rare B - Stippled Grape/Cable Tobacco Humidor**
- _____ 251. P - Grape/Cable Cologne Bottle - No Stopper
- _____ 252. **Beautiful P - Grape/Cable Cracker Jar w/Lid**
- _____ 253. M - Grape/Cable Cracker Jar w/Lid - Minor Inter. Nicks
- _____ 254. **P - Grape/Cable Compote w/Lid**
- _____ 255. P - Grape/Cable, 7 pc Water Set
- _____ 256. **P - Grape/Cable Whimsey Compote**
- _____ 257. Beautiful P - Grape/Cable Sweetmeat w/Lid
- _____ 258. **P - Grape/Cable Banana Bowl - Extra Nice**
- _____ 259. P - Grape/Cable Thumbprint, 7 pc. Rnd. Berry Set
- _____ 260. **P - N Grape/Cable Thumbprint, 9" Rnd. Master Berry Bowl**
- _____ 261. P - Stemmed, 5" Rnd. Grape/Cable Sherbets - 2 x \$
- _____ 262. **P - Grape/Cable Whiskey Shot Glass - Seldom Offered**
- _____ 263. M - Grape/Cable Whiskey Shot Glass - Little Sweetie
- _____ 264. **P - Grape/Cable 11" Oval Dresser Tray - A Beauty**
- _____ 265. P - Grape/Cable Candlesticks - 2 x \$
- _____ 266. **P - Grape/Cable Hatpin Holder - Multi Elec.**
- _____ 267. P - Grape/Cable Powder Jar w/Lid
- _____ 268. **Rich M - Grape/Cable Hat Pin Holder**
- _____ 269. M - Grape/Cable Powder Jar w/Lid - Hard to Find
- _____ 270. **G - Grape/Cable Hat Pin Holder - Buffed Feet**
- _____ 271. G - Grape/Cable Powder Jar w/Lid
- _____ 272. **B - Orange Tree Powder Jar w/Lid - Neat Item**
- _____ 273. M - Orange Tree Powder Jar w/Lid
- _____ 274. **Rich B - Orange Tree Loving Cup - Loaded w/Irid.**
- _____ 275. BA - Basket Flower Hatpin
- _____ 276. **BA - Tufted Pillow Hatpin - Blue Irid.**
- _____ 277. Scarce B - N Ftd. Grape/Cable, 10-1/2" Rnd. Fruit Bowl
- _____ 278. **Pumpkin M - 9-3/8", Rnd. Grape/Cable Fruit Bowl w/Straight Up Sides**
- _____ 279. P - 9" Grape/Cable (Vt.) Plate - Smooth Back - Outstanding - Base Nicks
- _____ 280. **P - 10" ICS Grape/Cable Bowl - Multi Elec.**
- _____ 281. P - P.C.E. Grape/Cable Bowl - Plain Back - Multi Elec.
- _____ 282. **Soft P - 8-3/4" Ruffled Grape/Cable Plain Back Bowl - Pretty**
- _____ 283. P - 7-1/2" Ruffled Grape/Cable Leaf Center Bowl
- _____ 284. **P - 6" Ruffled Grape/Cable Little Bowl**
- _____ 285. Colorful M - 9" Grape/Cable Plate - Bw Exterior
- _____ 286. **G - 8-1/2" Grape/Cable Plate - BW Exterior**
- _____ 287. P - 11" Fenton Grape/Cable, Lge., Ftd. Fruit Bowl
- _____ 288. **M - Persian Medallion Grape/Cable Ftd. Fruit Bowl - Point Chip**
- _____ 289. P - 8-3/4" Grape/Cable (Vt.) Plate - Smooth Back
- _____ 290. **G - PCE Grape/Cable Bowl - BW Exterior**
- _____ 291. Extra Nice M - 11-3/4" Flared, Rnd. Orange Tree, 8 pc. Punch Set
- _____ 292. **Elec P - 7-1/4", 8 Ruffled Imp. Heavy Grape Bowl**
- _____ 293. Magnificent P - 9-1/4" Scroll Embossed Plate w/Starred Base
- _____ 294. **Helios G - 9-1/4" Scroll Embossed Plate - Plain Base**
- _____ 295. P - 7-1/2" Rnd. Scalloped Scroll Embossed Bowl
- _____ 296. **G - Imp. 9" Open Rose Plate**
- _____ 297. Scarce G - Imp. Grape Goblet
- _____ 298. **Pumpkin M - Waffle Block Cup/Saucer**
- _____ 299. Elec. P - 7" Rnd. Imp. Windmill Bowl
- _____ 300. **P - 11" Imp. Heavy Grape Chop Plate - Elec. Blues/Purple**



- _____ 301. P - 11-1/4" Imp. Heavy Grape Chop Plate - Golds & Purples
- _____ 302. Elec. P - 5-3/4" Ruffle Scroll Embossed File Bowl
- _____ 303. Rich Amber - 7-3/4" Round Open Rose Bowl
- _____ 304. Lavender - 9" Imp. Low Ruffle Plate - Radium Beauty
- _____ 305. P - 5-1/4" Ruffled Zipper Heart Berry Bowl
- _____ 306. G - 6-1/2" Rnd. Near Cut Inverted Strawberry Bowl
- _____ 307. M - 7-1/2", 8 Ruffle Fenton Acorn Bowl
- _____ 308. Soft B - 7-3/4", 8 Ruffle Fenton Acorn Bowl
- _____ 309. B - 7" Flared Rnd. Fenton Acorns Bowl
- _____ 310. Dk. B - 7-3/4", 8 Ruffle Fenton Acorn Bowl
- _____ 311. Outstanding M - Collar Base, Ruffled Dragon/Lotus Bowl
- _____ 312. Cobalt B - Collar Base, Ruffled Dragon/Lotus Bowl
- _____ 313. Cobalt B - 8-1/2" ICS Dragon/Lotus Bowl
- _____ 314. M - 8-1/2" ICS Dragon/Lotus Bowl
- _____ 315. Cherry Red - 8-1/2" ICS Dragon/Lotus Bowl - Great Item - Very Desirable
- _____ 316. Beautiful Red - Fenton CRE, 6-1/4" VIP Holly Hat
- _____ 317. B - 7" Sq. Fenton Holly Hat
- _____ 318. A - 6" Braziers Candies Advert. Plate - Hot Item
- _____ 319. A - 9" Smooth Edge Fenton Thistle Ruffled Bowl
- _____ 320. B - 10-1/4" Persian Medallion 6 Ruffle Bowl
- _____ 321. B - 6-1/2" Sq. Blackberry Spray Hat
- _____ 322. Scarce B - 8-3/4", 8 Ruffle Plaid Bowl
- _____ 323. B - 6-3/4" ICS Leaf Chain Bowl - Neat Size
- _____ 324. B - 7-3/4" Leaf Chain Plate
- _____ 325. Scarce B - 7" Peacock Tail Ruffled Bowl
- _____ 326. B - 6-3/8" Cherry Chain Plate - Orange Tree Reverse
- _____ 327. Dk. M - 6" Persian Medallion/Orange Tree Plate - A Beauty
- _____ 328. Outstanding B - 7-1/2" Vintage Grape Plate
- _____ 329. M - 8-3/4" Ruffled Scarce Collar Base Chrysanthemum Bowl
- _____ 330. Radium M - 8-1/4" ICS, Collar Base, Peacock/Grape Bowl - Extra Nice
- _____ 331. A - 9" Fenton, 3 Fruits Ruffled Bowl (More Rare Than Plate)
- _____ 332. Dk. M - 9", 8 Ruffle Dragon/Lotus Bowl
- _____ 333. B - 9" Ruffled Dragon/Lotus Bowl
- _____ 334. Soft B - 9", 8 Ruffle Fenton Peacock/Urn Bowl
- _____ 335. B - Vintage Grape Fernery Bowl
- _____ 336. Scarce P - Vintage Grape Fernery Bowl
- _____ 337. A - 10-1/4" Smooth Edge Fenton Vintage Bowl
- _____ 338. Dk. M - 7" Ruffled Lions Bowl - Great Pattern
- _____ 339. M - JIP Ftd. Horse Medallion Bowl - Silver Satin
- _____ 340. Dk. A - 9" Ruffled Captive Rose Bowl
- _____ 341. B - 9-1/2" Fenton Peacock/Urn Plate - Loaded with Color - Way Above Average
- _____ 342. BA - 5", 12 Ruffle Kookaburra Berry Bowl
- _____ 343. PO - 9" Ruffled Carolina Dogwood Bowl
- _____ 344. P - 8-1/2" Fanciful Plate - A Beauty

- _____ 345. P - 9-1/4", 4 Flowers (Vt.) Plate
- _____ 346. G - N 9" Fruits/Flowers BW Plate
- _____ 347. M - N 9" Fruits/Flowers BW Plate
- _____ 348. M - 9" Stippled 3 Fruits Plate
- _____ 349. P - 9" Stippled 3 Fruits Plate
- _____ 350. Aqua Opal - Rose Show Ruffled Bowl - Pink Hilites on this Rarity
- _____ 351. P - 9" N Strawberry Plate - BW Exterior - Extra Nice
- _____ 352. P - P.C.E. N Strawberry Bowl - BW Exterior
- _____ 353. M - P.C.E. N Strawberry Bowl - BW Exterior
- _____ 354. A - 9" N Strawberry Plate - BW Exterior
- _____ 355. IB - PCE Nippon Bowl - Scarce BW Exterior
- _____ 356. M - 9" N Peacocks Plate - Pretty Pastel
- _____ 357. P - 9" N Peacocks Plate - Favorite Item
- _____ 358. Scarce B - P.C.E. N Peacocks Bowl - Polished Tip
- _____ 359. Lav. - P.C.E. Good Luck (Rib Back) Bowl
- _____ 360. P - Ruffled Good Luck (Rib Back) Bowl - Blue Irid. - Stands Out
- _____ 361. B - Ruffled Good Luck Bowl w/Rib Back
- _____ 362. A - David/Bows Ruffled Bowl
- _____ 363. P - N 7-1/2" Ruffled Bowl - Poppy Exterior Pattern
- _____ 364. Alaskan G - Greek Key, Dome Base Bowl w/ Plain Interior
- _____ 365. G - 9-3/4" Wishbone Ruffled Bowl - BW Exterior
- _____ 366. M - P.C.E 9-1/2" N Stippled Rays Bowl
- _____ 367. G - N 4-3/4" Singing Birds Berry Dish
- _____ 368. G - N 5" Rnd. Peacock/Fountain Berry Bowl
- _____ 369. M - Stork/Rushes Mug
- _____ 370. Radium M - Fishermans' Mug - Base Nick
- _____ 371. P - Beaded Shell Mug
- _____ 372. B - Orange Tree Mug - 2-1/2" Base
- _____ 373. M - Orange Tree Mug - 2-1/2" Base
- _____ 374. B - Mini Blackberry Compote
- _____ 375. Pretty M - Orange Tree Round Sherbet
- _____ 376. Elec. B - Orange Tree Round Sherbet
- _____ 377. M - Orange Tree Whimsey Compote from Wine
- _____ 378. M - Daisy/Plume Stemmed Rosebowl
- _____ 379. M - 6" O.E. 2 Sides Up Basket
- _____ 380. A - 5-3/4" Pine Cone Ruffled Bowl

#381 thru #440 Contemporary Collector Items

- _____ 381. Red - Fenton Grape & Cable Humidor
- _____ 382. A - 1969 Presznick's Museum Humidor
- _____ 383. Cobalt - Signed IG Grape Covered Candy - Electric
- _____ 384. Smoke - Signed IG Daisy Hld. Tall Basket
- _____ 385. Radium Smoke - Sgn. IG Grape Milk Pitcher
- _____ 386. M Radium - Sgn. IG Grape Milk Pitcher
- _____ 387. Amber Radium - Sgn. IG Grape Milk Pitcher
- _____ 388. Green Radium - Sgn. IG Grape Milk Pitcher
- _____ 389. M - IG Luster Rose Cov. Sugar
- _____ 390. Dk. Purple - Fenton Strawberry Lg. Cov. Candy Jar
- _____ 391. Yellow Frosty - Fenton Poppy Rosebowl
- _____ 392. Cobalt - Fenton Pinwheel Vase
- _____ 393. Amber - Hobnail Fenton Bell
- _____ 394. M - Hobnail Fenton Bell

- _____ 395. M Over Custard - 1983 HOACGA Loving Cup
- _____ 396. **Red - 1979 HOACGA Loving Cup**
- _____ 397. Red - Fenton Hobnail 5-3/4" Pitcher
- _____ 398. **Red - Fenton Poppy Rosebowl**
- _____ 399. Red - 8" Carolina Dogwood Bowl - WM
- _____ 400. **Red - Fenton 6" Handled Luster Rose Basket**
- _____ 401. Red - Fenton 6" Rd. Heavy Grape Bowl - Pretty
- _____ 402. **Red - Fenton 7-1/2" Persian Medallion Bowl**
- _____ 403. Red - IG Robin Mug - Super
- _____ 404. **Red - IG, 7 pc. Water Set - A Beauty**
- _____ 405. Amber - IG Grape Water Pitcher - Gorgeous
- _____ 406. **Green - IG Grape Water Pitcher - Silver**
- _____ 407. Smoke - IG, 6 pc. #474 Water Set
- _____ 408. **G - IG Grape Decanter w/Stopper - Nice**
- _____ 409. P - Fenton Flowers Rosebowl
- _____ 410. **Deep Smoke - IG Grape Salt & Pepper**
- _____ 411. B - St. Clair Goblet, Rose-N-The Snow
- _____ 412. **M - IG Homestead Chop Plate**
- _____ 413. Purple - 4-1/2" x 6" Moon & Star Jardiner
- _____ 414. **Green - IG 1988 Grape Childs Mug - A or B**
- _____ 415. Green - IG #474 Compote
- _____ 416. **Amber - IG Swan Salt**
- _____ 417. Lavender - Fenton Cathedral Bell
- _____ 418. **Smoke IG - Grape Cruet**
- _____ 419. Smoke IG - Big Basket Sugar Bowl w/ Lid
- _____ 420. **Purple - Fenton Poppy Pickle Dish**
- _____ 421. Black Amy - Fenton O.E. Basket
- _____ 422. **Amber - Fenton Hobnail Compote**
- _____ 423. M - Encore 1989 Mini Farmyard Basket
- _____ 424. **P - 6 Sided Fenton Floral Planter**
- _____ 425. B - Cactus Tumbler
- _____ 426. **B - Feather Serpent Tumbler**
- _____ 427. Smoke - IG Grape 5" Bowl
- _____ 428. **B - Holly Band Tumbler**
- _____ 429. Red - Signed S, 6-1/2" Bowl
- _____ 430. **M - Cameo Windmill Tumbler**
- _____ 431. Red Amberina - 9-1/2" Vase
- _____ 432. **P - Signed S Nappy**
- _____ 433. P - Signed S Compote
- _____ 434. **P - Signed S Bonbon**
- _____ 435. P - Fenton Buzz Star Compote

- _____ 436. **Black A - Stag and Holly Ftd. Bowl**
- _____ 437. B - St. Clair 5-1/2" Paneled Grape Plate
- _____ 438. **P - Fenton Christmas Church Plates - 1 thru 6 x \$**
- _____ 439. Box Lot Choice of 12 Toothpick Holders
- _____ 440. **Box Lot of 3 Items**
- _____ 441.-470. Choice of Approx. 100 Items

Happy Valentine's Day

👉 AUCTION CALENDAR OF EVENTS

👉 Watch for (2) Big Antique Auctions February & March

Saturday, March 10 @ 9:00 am
Carnival Glass Auction @ Boonville, MO
The Becicka Collection of Iowa
400 items and Blandford of Kentucky. Water Sets, Farm Yard, Aqua, Opal & more.

Saturday, April 14 @ 9:00 am
Carnival Glass Auction @ Boonville, MO
The Eddington Collection of Kansas
& Vogt Collection of Iowa
Wide selection of Collecting of neat Glass. WOW!

Saturday, May 19 @ 9:00 am
Carnival Glass Auction @ Boonville, MO
The Cunningham Collection of Colorado
& The Spangler Collection of Kansas
Two more lifetime collections.

Saturday, June 16 @ 9:00 am
Carnival Glass Auction @ Boonville, MO
The Mitchell Collection of Kansas
& The Hobart Collection of Nebraska

Saturday, July 14 @ 9:00 am
Carnival Glass Auction @ Boonville, MO
Quality Carnival Glass
You won't want to miss this spectacular selection.

👉 **Call Today To Sell Your Fine Items**
660-882-5292 Day
660-882-5283 Evening

SPECIAL NOTE:

NO SUNDAY CALLS, PLEASE!
 Winning Absentee Bidders will be contacted
 Monday through Wednesday of the week following
 the Auction! Thank You!

SEND ALL MAIL TO:

18350 Hunters Ridge Ct.
Boonville, MO 65233

WATCH: 👉 Web Site: www.AWK.SHN.com

