

171

**Remmen  
Auction**

is proud to present the

**2007**

**Tampa Bay  
Carnival Glass Club  
Convention Auction**

**Saturday, February 3rd, 2007**

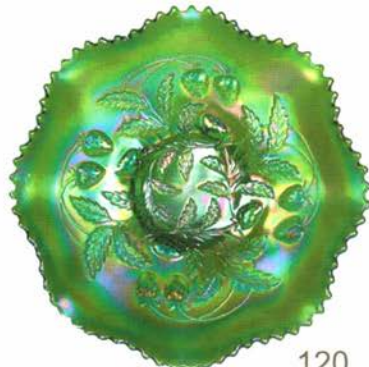
**Auction starts at 9:30 am**

Preview on Friday, February 2nd After Banquet Approx. 8:00 pm  
and on Saturday, February 3rd from 8:00 to 9:30 am

**Best Western Diplomat**

US 98 North, Lakeland, Florida 33805

Phone: 863-688-7972 • Fax: 863-688-8377



120



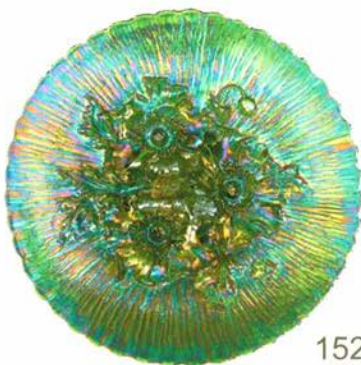
168



139



161



152



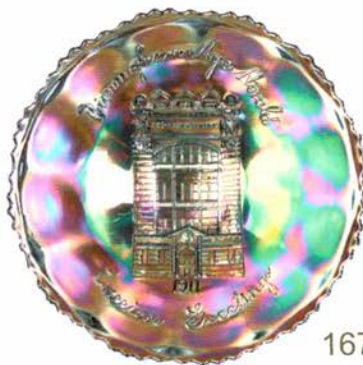
165



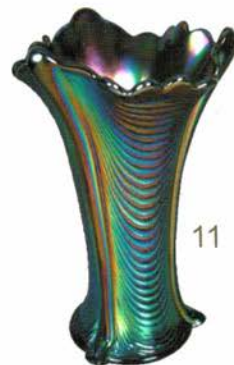
10



174



167



11

# 2007 Tampa Bay Carnival Glass Club Convention Auction

We would like to invite you to attend "The Tampa Bay Carnival Glass Convention & Auction. This year is the clubs twenty-fifth anniversary celebration and will be held in Lakeland Florida, January 31<sup>st</sup> through February 3<sup>rd</sup> 2007. The club has a wonderful itinerary planned including: an open house, educational seminars, and lots of complimentary food for those who are registered and attend. Room rate at the **Best Western Diplomat** will be \$ 84.99 per night (plus tax). This includes a daily hot breakfast buffet and the hotel will not charge for early check in or check out. You must make your reservations by **January 17th 2007** to ensure this room rate and be sure to mention the Tampa Bay Carnival Glass convention. For those who cannot attend, absentee and live phone bidding gladly accepted. You may contact Remmen Auction at our office 503-256-1226 or our Cell Number 503-756-2629. You may also use the absentee bid form located at the top of our website. So, come join us for some good fun, good food, and a beautiful selection of carnival glass at this year's auction! **Public Welcome.**

## Absentee Bid Policy

Absentee bids will be gladly accepted by either placing bids through our website or contacting us at our office: (503) 256-1226 or cell phone: (503) 756-2629. **The deadline for all absentee bids will be Friday February 2<sup>nd</sup> 2007, 6:00 pm EST.** A Credit Card may be required for submitting absentee or live phone- bids if not known by Remmen Auction. By submitting an absentee/ phone bid you are entering a contractual agreement with Remmen Auction Service and will take full responsibility to honor any/or all bids we may execute for you. Items are bid on in excellent condition without damage OR as described in our brochures. We will always do our best to describe each item as accurately as possible. All of the items in this auction are photographed and you may view each item on our website. Our photos are extremely accurate, so please use your own judgment concerning color and iridescence when placing an absentee bid through our site. We will not accept frivolous returns. Your absentee bid will be entered just as if you are present at the auction and bidding yourself. Bids will not be executed if damage to any item is found during the auction that has not been described in brochure. A \$7.50 handling charge for each successful absentee bid will be added to the selling price. The auctioneer will notify successful bidders within 1-7 days after the auction. Payment in full, plus estimated postage, insurance, and handling are required within 10 days of notification and before any item is shipped or delivered to buyer. Due to travel time for this auction, please allow up to 4 weeks for delivery of your items. In the event of a tie bid, bidders in attendance will have precedence over an absentee bid. In the event of a tie bid between absentee bidders, the earliest bid received will have precedence. Remmen Auction offers absentee/phone bidding as a convenience to our customers and will not be held responsible for errors or failure to execute bids.

## Live Phone Bidding

Live phone bidding will be accepted at this auction. Due to limited phone space, please be sure to submit your phone bid request early. Sorry, but we will only be able to accept Live Phone Bidding on items with an estimated value of \$500.00 and over.

## Terms and Conditions of Sale

Cash, Pre-approved Check, Visa, MasterCard, Discover Card, and American Express are accepted. A 4% Buyer's Premium will apply to all purchases with the exception of Cash or Check. All items must be paid for before they leave the premises. All statements made the day of sale will take precedence over any and all printed material. All items are being sold without guarantee or warranty implied, regardless of statements made by auctioneers or staff. Auction Company is not responsible for any accidents, thefts, breakage, or sold items. Remmen Auction reserves the right to withdraw any property at any time before and during the actual sale. All sales are final once the item leaves the auction location.

**Please visit our website for complete listing and photos of all items to be sold!**

**[www.remmenauction.com](http://www.remmenauction.com)**

### Debra Jo Remmen

Auctioneer

Phone: (503) 256-1226

Cell Phone: (503) 756-2629

e-mail: [debra@remmenauction.com](mailto:debra@remmenauction.com)

Florida License #AU2640

### Kris K. Remmen

Auctioneer/Auction Manager

Phone: (503) 256-6931

Cell Phone: (503) 757-5327

e-mail: [kris@remmenauction.com](mailto:kris@remmenauction.com)

Florida License #AU3423



Members of: National Auctioneers Association  
Oregon Auctioneers Association  
Certified Appraisers Guild of America

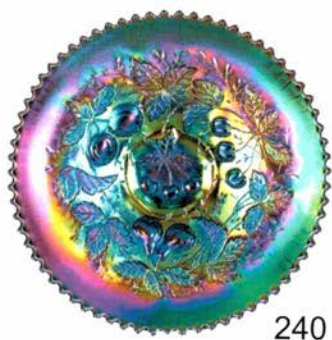
Graduate of Missouri Auction School  
Graduate of Mendenhall School of Auctioneering  
Licensed Auctioneers in the State of Florida  
Licensed Auctioneer in the State of Ohio



- 1 Fenton Powder Blue Blackberry Spray Two Row Open Edge Basket with Two Sides Up. Neat Piece with Electric Blue on Berries. 6 1/2" Long
- 2 Fenton Red Two Row Open Edge Basket with Two Sides Up.
- 3 Fenton Green Captive Rose 3/1 Edge Bowl. Super Iridescence
- 4 Northwood Pastel Marigold Sunflower Bowl.
- 5 Fenton Green Peacock and Grape 3/1 Edge Bowl. Lots of Nice Blue Iridescence
- 6 Beautiful Fenton Amethyst Peacock & Grape Collar Base Bowl.
- 7 Beautiful Blue Peacock and Grape Ruffled Collar Base Bowl.
- 8 Incredible Fenton Amethyst Ruffled Thistle Bowl.
- 9 Fenton Amberina/Red Peacock & Grape Spatula Footed Bowl. Great Color. One of the better ones I have seen
- 10 Very Rare Northwood 7 3/4" Marigold Jesters Cap Tree Trunk Vase. Less Than A Handful Known
- 11 Northwood Electric Blue 8" Drapery Vase. Wow, It is Beautiful with Excellent Feet
- 12 Beautiful Rihimaki 5" Blue Rose Garden Rectangular Vase. Pretty Piece
- 13 Beautiful Fenton Electric Blue ICS Holly Bowl. Absolutely Beautiful. Has roughness on the base. Who Cares!
- 14 Beautiful Fenton Amethyst ICS Holly Bowl. Really a nice one
- 15 Fenton Red/Amberina Holly Ruffled Bowl. Super Nice
- 16 Imperial Green/ Teal Waterlily Pitcher and Five Tumblers. Base has a bit of teal tint to it
- 17 Northwood Blue Peacock at the Fountain Pitcher. Has Nice Electric Highlights
- 18 Northwood Purple Poppy Pickle Dish. Absolutely Beautiful Example and Scarce Color
- 19 Northwood Pumpkin Marigold Poppy Pickle Dish. They Don't Come Much Nicer
- 20 Northwood Ice Blue Poppy Pickle Dish. Pretty Pastel Iridescence
- 21 Gorgeous Northwood Green Grape & Cable Powder Jar & Lid.
- 22 Beautiful Northwood Green Grape & Cable Hatpin Holder. Has wonderful Blue Iridescence. Tiny Nicks on Feet
- 23 Northwood Ice Green Fruits & Flowers 7 1/2" Ruffled Bowl.
- 24 Northwood White and Gold Decorated Peach Table Set. Super Iridescence. Nick under Sugar Lid
- 25 Northwood Electric Purple Peacock at the Fountain Covered Sugar.
- 26 Imperial Electric Purple Hattie 9" Ruffled Bowl. Fantastic Blue Iridescence
- 27 Imperial Smoke Hattie 9" Ruffled Bowl.
- 28 Imperial Electric Purple Pansy Pickle Dish.
- 29 Imperial Lavender Windmill Pickle Dish.
- 30 Electric Purple Imperial Grape Pitcher.
- 31 Electric Purple Imperial Grape Wine Decanter and Stopper.
- 32 Imperial Electric Purple Free Fold 12" Vase.
- 33 Imperial Purple Stretch Bowl with Four Sides Turned In. Brilliant Iridescences. Iron Cross Mark
- 34 Imperial Red Chesterfield Red Creamer and Sugar.
- 35 Rare Imperial Marigold 6" Heavy Grape Miniature Chop Plate. Super neat little plate with gorgeous radium Iridescence. Fourth one known
- 36 Dugan Electric Purple Apple Blossom Twigs Ruffled Bowl.
- 37 Dugan Electric Purple Dogwood Sprays Ftd. Bowl with 3/1 Edge. Typical Nicks and Fleabites on Feet
- 38 Dugan Electric Purple Cherries Ruffled 9" Bowl.
- 39 Dugan Ice Green 6 1/4" Square Vase.
- 40 Dugan Purple Novelty Swan. Nice Iridescence
- 41 Dugan Electric Purple Stippled Petals Dome Footed Crimped Plate.
- 42 Millersburg Crystal Goofus Glass Hobstar & Feather ICS Bowl. 10" Wide
- 43 Millersburg Amethyst Trout & Fly Bowl with 3/1 Edge. Satiny with Nice Color
- 44 Millersburg Marigold Fleur de Lis Collar Base Bowl. Has Radium Iridescence. Scarce Collar Base
- 45 Millersburg Marigold Little Stars Ruffled Bowl.
- 46 Millersburg Amethyst Peacock 5 3/4" Sauce. No Bead or Bead.
- 47 Millersburg Marigold Hobnail Spittoon.
- 48 Millersburg Purple Hobnail Swirl Spittoon.
- 49 Millersburg Green Little Stars 7 1/2" Ruffled Bowl.
- 50 Cambridge Marigold Inverted Strawberry Spittoon. Signed Near cut
- 51 Rare Cambridge Marigold Inverted Feather Spittoon. Only one known so far. Has Hard to Find Internal . Have never seen or heard of another
- 52 Very Rare Brokwitz Marigold Tartan Covered Butter Dish. Nice Dark Marigold Color. Don't Know of Another
- 53 Extremely Rare Brockwitz Marigold Rose Garden Covered Butter Dish.
- 54 Cambridge Marigold Large Inverted Strawberry Compote. 5 3/4" Tall with 9" Opening
- 55 Northwood Aqua Opal Fruits & Flowers Bon-Bon. Very pretty Pastel with no butterscotch
- 56 Northwood Electric Blue Grape & Cable Bon Bon.
- 57 Northwood Electric Blue Drapery Rose bowl. Incredible and Even
- 58 Very Rare Fenton Ice Green Pond Lilly Bon-Bon. Only One Known?
- 59 Northwood Aqua Opal Leaf & Beads Rosebowl. Quite Pastel with Very Little Butterscotch and Nice Blue Iridescence
- 60 Fenton Marigold Vintage Bowl, in Silver Frame with Spoon. Jelly or Mayo Server
- 61 Fenton Stretch Tangerine Opal 5" Compote.
- 62 Northwood Purple Butterfly Bon Bon with Threaded Exterior.
- 63 Millersburg Amethyst Leaf & Little Flowers Compote. Radium finish
- 64 Northwood Ice Blue Peacock at the Fountain Compote. Very Desirable
- 65 Rare Fenton Ice Green Stippled Rays Compote. 3 1/2" Tall 6" Wide



96



240



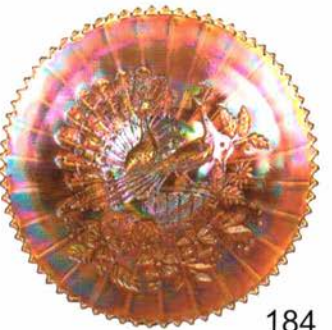
79



93



223



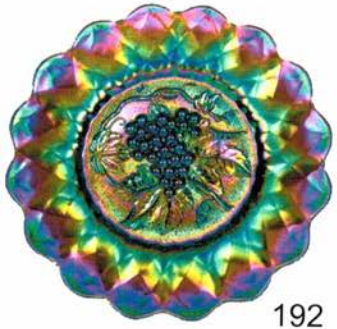
184



224



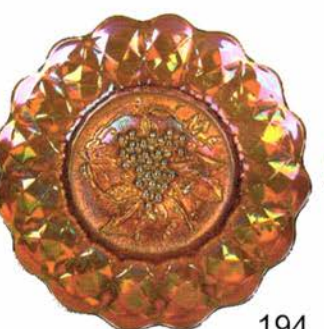
216



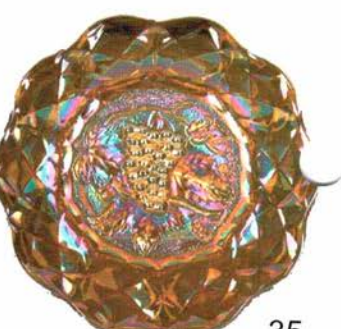
192



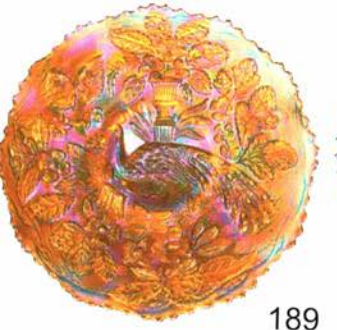
193



194



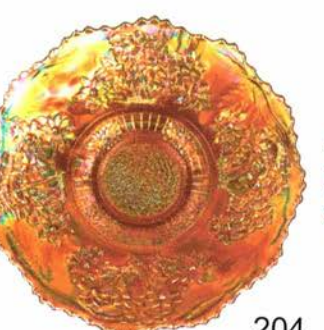
35



189



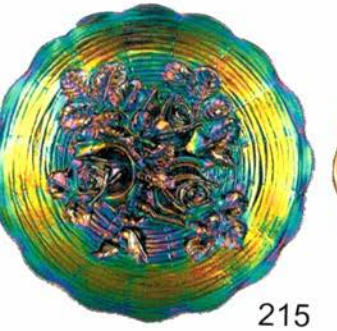
190



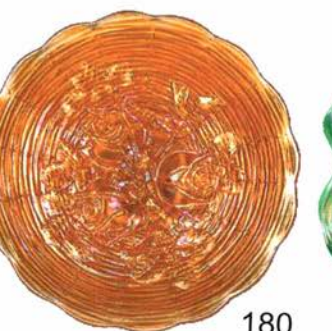
204



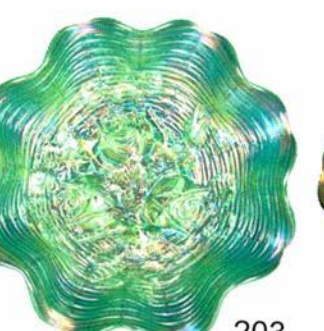
68



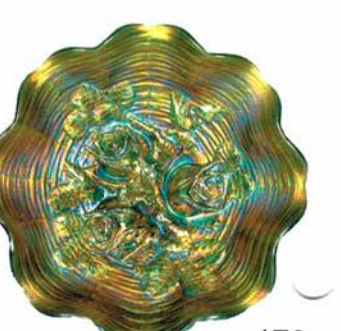
215



180



203



179



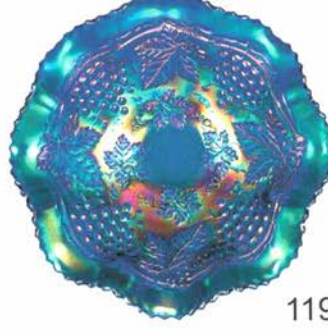
145



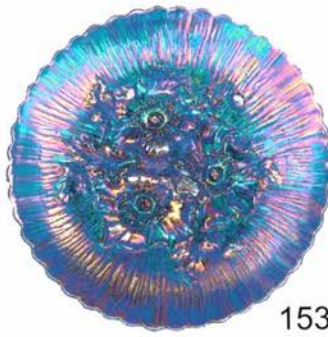
142



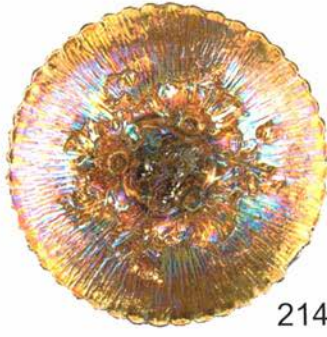
144



119



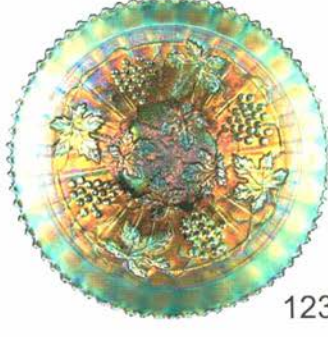
153



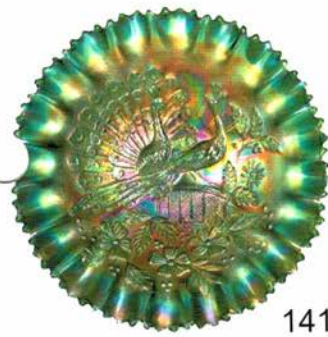
214



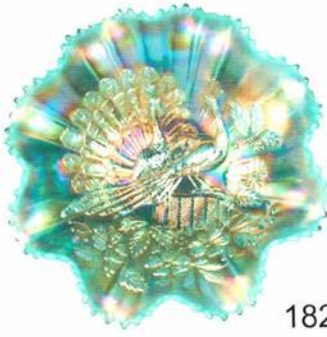
124



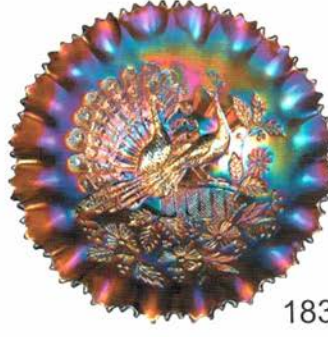
123



141



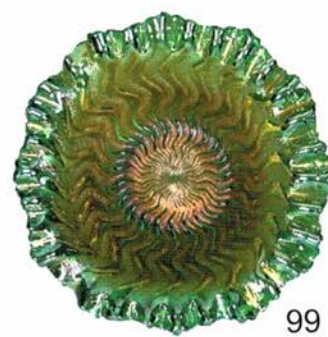
182



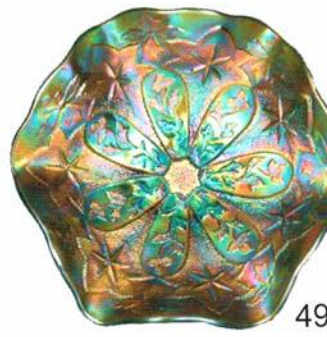
183



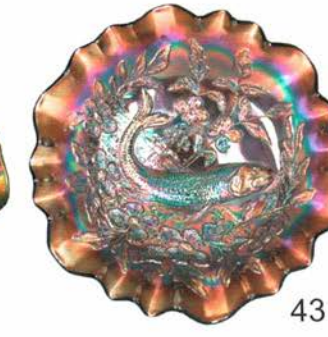
98



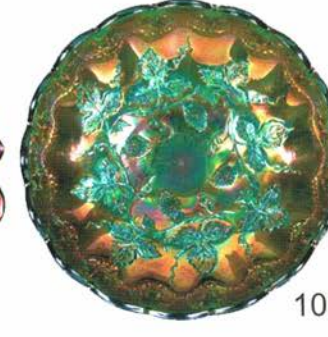
99



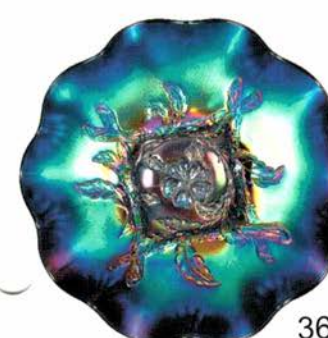
49



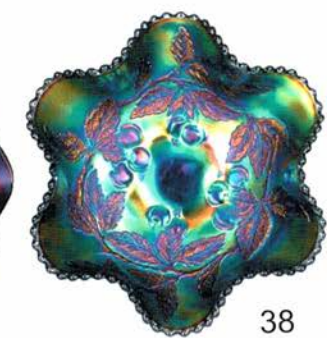
43



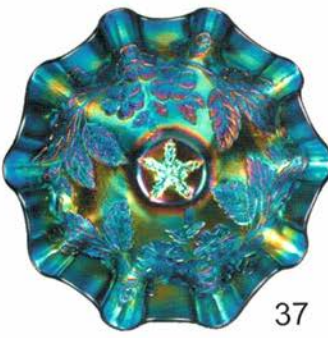
100



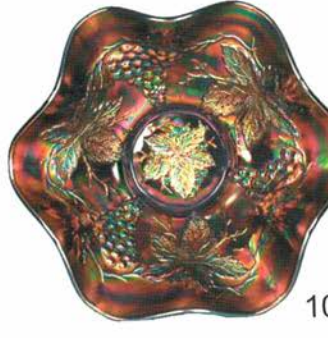
36



38



37



102

- 66 Pair of Westmoreland Light Marigold 4" Dolphin Candlesticks with Scalloped Bases. Extremely rare have not seen in this color before
- 67 Pair of Northwood # 695 Colonial Vaseline Candlesticks. 8 1/2" Tall
- 68 Awesome Fenton Blue Orange Tree Plate. Incredible Radium Iridescence
- 69 Fenton Green Orange Tree Plate. Very Rare Color. has spotty missing iridescence
- 70 Beautiful Fenton Clambroth Orange Tree Plate with Radium Iridescence. Has almost a yellow hue to base glass and glows a bit
- 71 Super Fenton Red 9" Ruffled Vintage Bowl. Nice Red Iridescence
- 72 Fenton Red Grape & Cable ICS 6 1/4" Bowl. Radium Iridescence
- 73 Millersburg Green Wild Rose Oil Lamp. Has Small Nicks on Base of Lamp
- 74 Rare Imperial Vaseline 16 1/4" Ripple Vase with 3 3/4" Base. Has Marigold Overlay 3/4 down. Great Base Color. No Doubt its Vaseline
- 75 Beautiful Fenton Marigold Rustic Funeral Vase. Has Great Color From Top to Bottom. 19" Tall with 4 3/4" Base
- 76 Northwood Marigold Town Pump. Fades to lighter on the bottom
- 77 Imperial ? Red Stretch Glass Iridized Compote. Beautiful Stretch Effect with Polished Pontil
- 78 Extremely Rare Fenton Wisteria Jack in the Pulpit Whimsy Bud Vase. 11 3/4" tall
- 79 Northwood Blue Three Fruits PCE Stippled Bowl. Gorgeous and Even
- 80 Northwood Lavender Stippled Three Fruits PCE Bowl. Beautiful
- 81 Northwood Pastel Marigold Stippled Three Fruits Plate.
- 82 Northwood Marigold Stippled Three Fruits PCE Bowl.
- 83 Northwood Green Stippled Three Fruits Medallion Bowl.
- 84 Beautiful Fenton Blue Ten Mums Tankard and Six Tumblers.
- 85 Beautiful Fenton Blue Butterfly and Berry Pitcher and Six Tumblers.
- 86 Fenton Amethyst Paneled Dandelion Tankard and One Tumbler.
- 87 Millersburg Marigold Feather & Heart Pitcher. Great Dark Multi Colored Iridescence. One of the Best Ones I Have Seen
- 88 Six Millersburg Feather & Heart Tumblers. One Tumbler Has Small Flake on Rim
- 89 Northwood Purple Acorn Burrs Punch Base.
- 90 Northwood Purple Acorn Burrs Six Piece Table Set..
- 91 Northwood Purple Good Luck Plate.
- 92 Northwood Purple Good Luck Ruffled Bowl.
- 93 Northwood Dark Pumpkin Marigold Three Fruits Stippled Plate. Super Dark with Pink Iridescence
- 94 Northwood Electric Blue Three Fruits Stippled Plate.
- 95 Northwood Purple Stippled Strawberry Ruffled Bowl.
- 96 Northwood Amber/Horehound Stippled Strawberry Bowl with Pie Crust Edge and Basketweave Exterior. Absolutely Beautiful With a Very Rare Unusual Color.
- 97 Millersburg Amethyst Square Whirling Leaves Bowl with Tight Crimped Edge.
- 98 Millersburg Dark Marigold Tri Corner Fleur De Lis Dome Footed Bowl with CRE. Radium Iridescence. Has Small Nick on Bottom Sawtooth
- 99 Millersburg Green Zigzag Bowl with Tight Crimped Edge.
- 100 Millersburg Green Strawberry 9 1/4" ICS Bowl. Has Beautiful Blue Iridescence
- 101 Dugan Electric Purple Cherries 6 1/4" CRE Plate.
- 102 Dugan Electric Purple Heavy Grape 10 " Ruffled Bowl. WOW
- 103 Dugan Black Amethyst Six Petals Tri-Corner Bowl. Spectacular Iridescence
- 104 Beautiful Dugan Blue Double Stem Rose Ruffled Bowl.
- 105 Dugan Lavender Double Stem Rose Bowl. Near Electric High Lights
- 106 Beautiful Dugan Dark Marigold Formal Hat Pin Holder.. Color From Top to Bottom
- 107 Northwood Violet Blue Peacock at the Fountain Punch Set Including Six Cups.. Bowl and Base Have Violet/ Blue Base Color with Reddish Streaks
- 108 Pair of Electric Purple Imperial Grape Water Carafes.. Hard to choose they are so nice. You pick One
- 109 Pair of Imperial Electric Purple Six Sided Candlesticks. Very Scarce and Pretty
- 110 Imperial Electric Purple Beaded Bullseye 8 1/4" Vase.
- 111 Beautiful Fenton Green Captive Rose Plate. Beautiful Plate with Multi Colored Blue iridescence
- 112 Fenton Blue Captive Rose 9" Plate. Nice Iridescence. Looks Blue
- 113 Fenton Dark Marigold Spector's Dept. Store Plate. Really Nice with Multi Colored Iridescence
- 114 Fenton Marigold Peacock & Grape Plate with Collar Base. Very Nice
- 115 Fenton Blue Peacock and Grape Plate with Collar Base. Beautiful with Electric Iridescence in Center
- 116 Fostoria Lavender Brocaded Acorns Ftd Center Piece Bowl with Gold Trim. 12 1/4". Rare with Excellent Iridescence and Nice Gold Trim
- 117 Rare Fenton Marigold on Milk Glass Holly Ruffled Bowl.
- 118 Super Fenton Dark Marigold on Moonstone Holly Ruffled Bowl. Super Dark Iridescence
- 119 Fantastic Northwood Electric Blue 10 1/2" Grape & Cable Ruffled Bowl.
- 120 Fantastic Northwood Green Ruffled Strawberry Bowl with Plain Exterior. Has beautiful pastel iridescence. Near apple green base color
- 121 Northwood Blue Embroidered Mums Ruffled Bowl.
- 122 Northwood Green Grape & Cable Small Ruffled Fruit Bowl.
- 123 Northwood Sapphire Stippled Grape & Cable Plate. Very Even and Pretty. Has Ribbed Exterior
- 124 Northwood Green Old Rose Distilling Co. Advertising Plate. Has Beautiful Above Average Iridescence

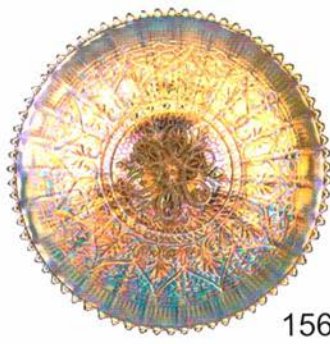
- 125 Northwood Amethyst Fern Brand Chocolates Hand Grip Plate. Has Tiny Scratches Above Fern
- 126 Beautiful Northwood Marigold Grape & Cable Master Punch Bowl Base and Twelve Punch Cups.. Fantastic with Multi Colored Iridescence
- 127 Beautiful Northwood Electric Purple Grape and Cable Master Punch Bowl and Base. Has Burst Bubble on Ruffle Edge
- 128 Rare Northwood Marigold Grape & Cable Sweet Meat. Nice dark marigold with very nice iridescence
- 129 Beautiful Northwood Aqua Opal Drapery Rose Bowl. +
- 130 Northwood Lime/ Ice Green Leaf & Beads Rosebowl.
- 131 Beautiful Northwood Ice Blue Opalescent Leaf and Beads Rose Bowl.
- 132 Northwood Lime/Ice Green Three Fruits Medallion Spatula Ftd Bowl. Super Base Color with Pastel Iridescence
- 133 Northwood Electric Blue Hearts and Flowers Compote.
- 134 Fenton 9" Red/Amberina Fine Rib Vase.
- 135 Fenton Red Water lily Footed Ruffled Sauce. Super pretty
- 136 Fenton Aqua Opal Blackberry Spray Ruffled Hat.
- 137 Spectacular Marigold 12 1/2" Fir Cone Vase. French Origin. Has ash in glass around top edge
- 138 Sowerby Amethyst 8 1/4" Pinwheel Vase.
- 139 Beautiful Northwood Sapphire Diamond Points Vase. 10 3/4" Tall. Super Pastel Iridescence
- 140 Northwood Green Good Luck PCE Bowl. Has Very Pretty Blue Iridescence
- 141 Northwood Green Peacocks Bowl with PCE.
- 142 Northwood Ice Blue Peacock at the Urn Master ICS Bowl. Super Example
- 143 Northwood Ice Green Peacock at Urn Master Ice Cream Bowl.
- 144 Beautiful Northwood Electric Blue Peacock at Urn Master ICS Bowl. It's a Keeper
- 145 Rare Northwood Marigold Stippled Peacock at the Urn Chop Plate.
- 146 Fenton Electric Blue Butterfly and Fern Pitcher with Six Tumblers.
- 147 Scarce Fenton Marigold Vintage 9" Plate. Super Iridescence
- 148 Very Rare Fenton Blue 9" Vintage Plate. Super Pretty and Only a Few Known
- 149 Beautiful Fenton Persian Blue Vintage 9" Ruffled Bowl. If you Like Persian Blue This is the one.
- 150 Fenton Aqua Opal Vintage 7" Low Ruffled Bowl. Rare and Nice
- 151 Consolidated Roses and Ruffles Gone with the Wind Lamp with Bradley and Hubbard Base. Has Beautiful Butterscotch Iridescence. Crows Foot in top Globe
- 152 Fantastic Northwood Green Poppy Show Plate. Nice and flat with stretchy blue iridescence. One of the best
- 153 Super Northwood Blue Poppy Show Plate.
- 154 Northwood Marigold Poppy Show Ruffled Bowl. Super Dark in the center and fades to lighter Marigold
- 155 Northwood Ice Green Poppy Show Plate. Another nice piece
- 156 Beautiful Northwood Pastel Marigold Hearts & Flowers Plate with Ribbed Exterior. Different Base Color That Glows Under Black light. Lots of Pastel Iridescence
- 157 Northwood Purple Hearts & Flowers Plate with Ribbed Exterior. Another Beauty
- 158 Outstanding Northwood Ice Blue Good Luck Ruffled Bowl with Ribbed Exterior. Gorgeous Pastel Iridescence
- 159 Rare Cambridge Green Inverted Thistle Compote . 7 1/4" tall and 9 1/4" Wide. Maybe the Only One Known. One Other was Reported, Could this be it?
- 160 Super Northwood Ice Blue Squatty Tree Trunk Vase. 6 1/4" Tall
- 161 Fantastic Imperial Electric Purple "Signed Nuart" Homestead Chop Plate. Speaks for itself
- 162 Electric Imperial Amber "Signed Nuart" Homestead Chop Plate.. Lights Up. Has Teeny Tiny Flake around concentric ring and tiny fleabites. Who cares, its gorgeous!
- 163 Fantastic Millersburg Marigold Blackberry Wreath 6" Plate. Beautiful, Radium and Flat
- 164 Imperial Purple Broken Arches Punch Bowl and Base with Six Punch Cups.
- 165 Imperial Electric Purple "Signed Nuart" Chrysanthemum Chop Plate. WOW
- 166 Wonderful Imperial Smoke Chrysanthemum Chop Plate.
- 167 Beautiful Fenton Birmingham Age Herald 9" Plate. One of the Best Examples, with Beautiful Iridescence and Mold Strike
- 168 Extremely Rare Northwood Lime Green Opal Four Pillars Vase. 10 1/4" Tall
- 169 Northwood Aqua Opal Four Pillars Vase. 10 3/4" Tall
- 170 Northwood Green 10" Four Pillars Vase. Very Nice Iridescence
- 171 Fantastic Northwood Green Sunflower Footed Bowl. Covered with Blue Iridescence. One of my Favorite Pieces
- 172 Incredible Fenton Amethyst Concord Plate. Absolutely Beautiful with wonderful iridescence
- 173 Fenton Blue Lotus & Grape 9" Plate. Pretty Even Iridescence
- 174 Fenton Electric Blue Soldiers & Sailors Plate. Great Mold Strike and Super Iridescence
- 175 Northwood Green Dandelion Tankard. Beautiful Example
- 176 Northwood Peach Opal Strawberry Plate. Has light opal on tips
- 177 Rare Dugan White Dahlia Footed Pitcher with Gold Decoration. Super Iridescence
- 178 Very Rare Imperial Marigold Columbia Rosebowl. Has flea bites on edge
- 179 Northwood Green Rose Show Ruffled Bowl. Has Super Multi Color Iridescence
- 180 Northwood Marigold Rose Show Plate.
- 181 Millersburg Amethyst Isaac Benesch Ruffled Bowl.
- 182 Northwood Aqua Opal Peacocks Ruffled Bowl.
- 183 Northwood Lavender Peacocks on the Fence PCE Bowl. Another Beauty
- 184 Spectacular Marigold Peacocks on the Fence Plate with Ribbed Exterior. They Don't Come Better Than This. If you are a Peacocks Collector you Should Defiantly Upgrade!







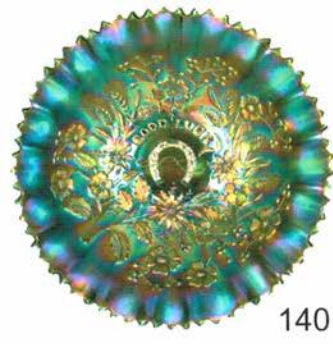
101



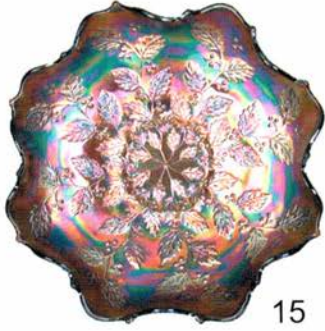
156



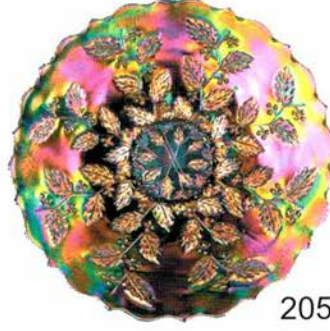
91



140



15



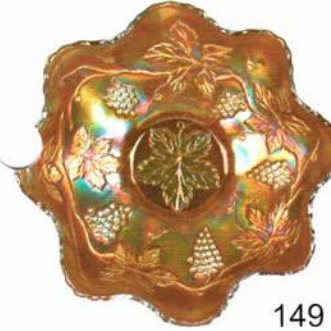
205



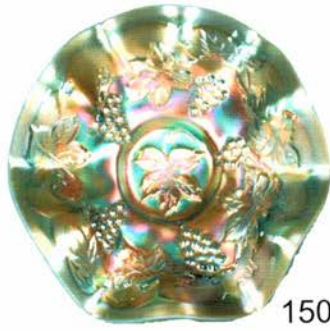
207



118



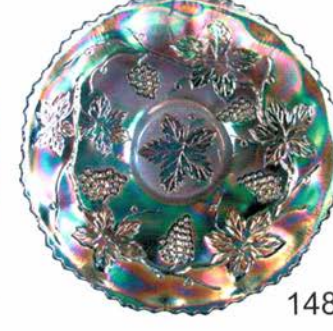
149



150



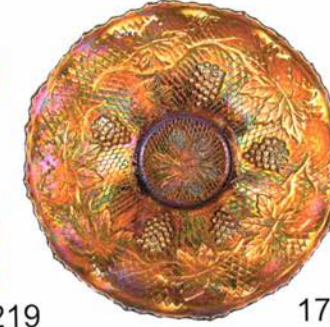
147



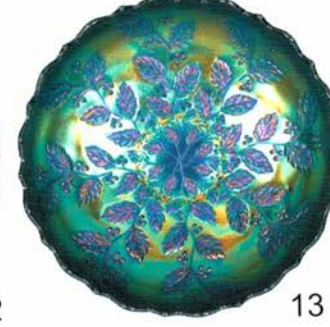
148



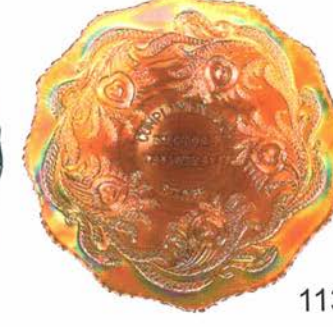
219



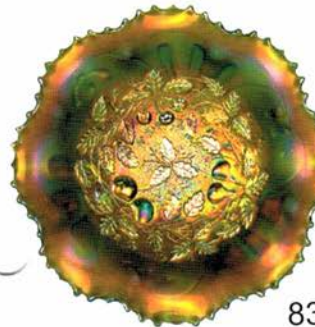
172



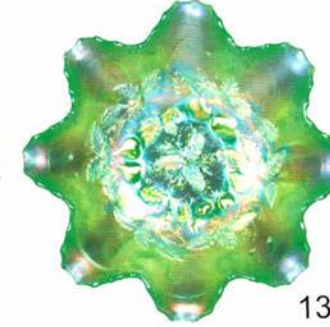
13



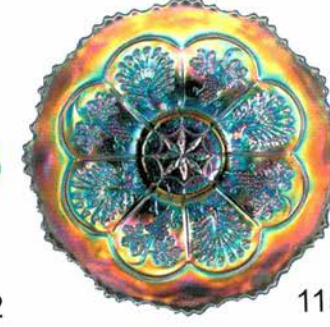
113



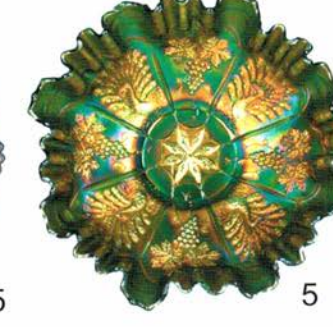
83



132



115



5

- 185 Rare & Fantastic Fenton Pumpkin Marigold Cherry Chain Chop Plate. Radium Finish . Has Flat Flake on Front of Plate. Still a Keeper
- 186 Rare Dugan 11 1/2" Peach Opal Garden Path Variant Chop Plate. Soda Gold Exterior. Has small area of spotty iridescence.
- 187 Northwood White Thin Rib Mid-Size Funeral Vase. 13" Tall with 4 3/4" Base
- 188 Super Northwood Dk Marigold Daisy & Drape Vase with Flared Top. Lots of Nice Pink Iridescence
- 189 Stunning Fenton Pastel Marigold Peacock at Urn Plate. Covered with Pinks. Wow
- 190 Electric Blue Fenton Peacock at Urn Plate.
- 191 Gorgeous Imperial Marigold Heavy Grape Chop Plate with Radium Iridescence.
- 192 Imperial Electric Purple Heavy Grape Chop Plate. WOW
- 193 Imperial Smoke Heavy Grape Chop Plate. Wonderful Stretch Effect
- 194 Imperial Amber Heavy Grape Chop Plate. Very Pretty
- 195 Dugan Blue Round Up Plate.
- 196 Dugan Electric Purple Holly and Berry Nappy. Very Nice
- 197 Dugan White Double Stem Rose Footed Plate. Gorgeous Iridescence
- 198 Imperial Purple Open Rose Plate. Tiny fleabites on roses
- 199 Imperial Electric Purple Pansy Ruffled Bowl. Beautiful blue iridescence
- 200 Imperial Electric Purple Pansy Sugar Bowl.
- 201 Imperial Smoke Homestead Chop Plate.
- 202 Northwood Ice Green 10 1/2" Fine Rib Vase.
- 203 Northwood Ice Green Ruffled Rose Show Bowl.
- 204 Outstanding Fenton Dark Marigold Orange Tree Plate. Super with radium Iridescence
- 205 Fenton Electric Blue Holly Plate. Beautiful Even Iridescence
- 206 Fenton Marigold Holly Plate. Dark & Pretty
- 207 Rare Fenton Marigold on Moonstone Holly Bowl with 3/1 Edge. Gorgeous Iridescence
- 208 Fenton Electric Blue Panther Master Berry Bowl. Incredible Mold Strike
- 209 Fenton Stag & Holly Pink/ Marigold 10 1/2" Ruffled Bowl Ftd Bowl. Rare Base Color
- 210 Fenton Aqua Stag & Holly Ftd. Bowl. Super Nice
- 211 Fenton Dark Purple 11 1/4" Chrysanthemum Ruffled Ftd. Bowl. Scarce Base color and Really Pretty
- 212 Marigold Imperial Grape 9" Plate.
- 213 Scarce Imperial Grape Amber 9" Plate.
- 214 Fantastic Northwood Pastel Marigold Poppy Show Plate.
- 215 Gorgeous Northwood Blue Rose Show Plate. Has Manufacturer Defect on Rose
- 216 Northwood Amethyst Peacocks Plate with Beautiful Smokey Iridescence. Neat Piece
- 217 Northwood Aqua Opal Peacocks on the Fence Ruffled Bowl. Has nice Smokey iridescence
- 218 Northwood Electric Blue Wishbone Footed Bowl.
- 219 Rare Millersburg Light Marigold Hobstar & Feather Square Bowl. Lightly Flashed Marigold Iridescence. Measures 6 1 x 7 1/2". At This Time Only One Known
- 220 Northwood Pastel Aqua Hearts & Flowers Ruffled Bowl. Odd Color, Very Pretty
- 221 Northwood White Peacocks on the Fence Ruffled Bowl. Super Iridescence on White
- 222 Northwood Aqua Opal Three Fruits Medallion Footed Bowl.
- 223 Northwood Blue Stippled Peacocks 9" Plate. Ribbed Exterior
- 224 Northwood Marigold Stippled Peacocks Plate with Ribbed Exterior. Lots of Pink Iridescence
- 225 Northwood White Peacocks Plate. Has Plain Exterior
- 226 Dugan White Persian Garden 11" ICS Bowl.
- 227 Eda Electric Purple Four Flowers Variant 9 1/4" Plate.
- 228 Fenton Cherry Red JIP open Edge Basket with Radium Iridescence. Wow
- 229 Fenton Aqua JIP Two Row Open Edge Basket.
- 230 Fenton Lavender Two Row Open Edge Ruffled Basket.
- 231 Fenton Celeste Blue 6" Square Open Edge Basket.
- 232 Fenton Marigold Little Flowers 6 1/4" Plate. Has Nice Stretchy Effect
- 233 Fenton Green Autumn Acorn 9" Plate.
- 234 Inwald Drapery Variant Pitcher & Four Matching Tumblers. Beautiful Set
- 235 Lot of Four Tumblers Including, Dugan Marigold Beaded Shell, Northwood Marigold Blueberry, Millersburg Amethyst Diamonds and Fenton Marigold Orange Tree Orchards.. (Sold Choice)
- 236 Lot of Tumblers Including Northwood Electric Purple Raspberry, Northwood Blue Grape and Gothic Arches and Northwood Purple & Amethyst Grape and Cable. (Sold Choice)
- 237 Millersburg Amethyst Hobnail Rosebowl.
- 238 Millersburg Marigold Hobnail Rosebowl.
- 239 Northwood Amethyst/ Horehound Raspberry Tumbler. Scarce Odd Base Color with Great Iridescence
- 240 Northwood Lavender Three Fruits Plate with Plain Exterior. Super Stretchy Iridescence
- 241 Northwood Marigold Good Luck Plate with Ribbed Exterior.
- 242 Northwood Marigold Greek Key Plate.
- 243 Imperial Electric Purple 8" Ripple Vase.
- 244 Imperial Electric Purple Scroll Embossed 7 1/2" ICS Bowl.
- 245 Imperial Electric Purple Scroll Embossed Plate.
- 246 Imperial Pastel Marigold Field Flower Water Pitcher. Beautiful Pastel Iridescence
- 247 Fenton Marigold Persian Medallion 9" Plate.
- 248 Fenton Marigold Peacock and Dahlia 7 1/2" Plate.
- 249 Fenton Green Peacock & Grape Ruffled Collar Base Bowl. Nice Iridescence
- 250 Fenton Marigold 7 1/2" Lions Plate. Has very nice radium iridescence
- 251 Northwood White Tree Trunk Vase. 10 1/2" Tall
- 252 Northwood Marigold Corn Vase.

253 Northwood Purple Stippled Grape & Cable Ruffled Bowl.

254 Northwood White Wishbone Footed Bowl.

255 Fenton Aqua Holly Bowl with 3/1 Edge.

256 Imperial Grape Smoke Wine Decanter. Nice Iridescence

257 Imperial Electric Purple/ Lavender Grape 6" Plate.

258 Imperial Electric Purple Heavy Grape 8" Plate.

259 Lot of Four Tumblers Including: Dugan Purple Wreath Cherry, Imperial Pastel Marigold Waterlily, Imperial Amethyst Diamond Lace and Imperial Purple Luster Rose. (Sold Choice)

260 Lot of Tumblers Including: Fenton Green Butterfly and Berry, Purple Butterfly and Berry, Blue Grapevine Lattice and Purple Lattice and Grape. (Sold Choice)

261 Northwood Dark Marigold Round Bushel Basket.

262 Imperial Teal Wide Panel Stretch Glass Compote. 7 1/2" Tall. Very Scarce and Desirable with Great Color

263 Imperial Electric Purple 9" Windmill Ruffled Bowl. Has two spots of missing iridescence

264 Electric Purple Imperial Grape 8 1/2" Bowl.

265 Imperial Brass Pansy Bowl.

266 Imperial Lavender Cobblestone Bowl. Nice with Electric Highlights

267 Four Fenton White Orange Tree Punch Cups.. Beautiful and Frosty. (Sold Choice)

268 Top O' the Morning Carnival Glass Hatpin and Six Plums Carnival Glass Hatpin. (Sold Choice)

269 Pair of Carnival Glass Hatpins (Sold Choice). Tufted Throw Pillow and Beads & Bars

270 Pair of Big Butterfly Hatpins in Original Cardboard Holder.

271 Two Purple Diamond Sphere Carnival Glass Hatpins. (Sold Choice)

272 Rare White Spider Hatpin. Not Iridized

273 Beautiful & Rare Fancy Beetle Hatpin. Super Blue Iridescence on Beetle. Signed Geschunzt. Has Typical Tiny Fleabites on Underneath Edge

274 Imperial Purple Open Rose Footed Bow. 7 3/4".

275 Northwood Blue Opal Beaded Cable Rosebowl.. Non Carnival

276 Northwood Pastel Marigold Poppy Pickle Dish. Very Pretty

277 Dugan Light Marigold Banded Vintage Tumbler. Hard to find

278 Singleton Bailey Contemporary Blue and Black Amethyst 11 1/2" Chop Plates. (Sold Choice)

279 Singleton Bailey Contemporary Red Farmyard Large Ruffled Spittoon.

280 Singleton Bailey Contemporary Electric Green Farmyard Bowl with 3/1 Edge.

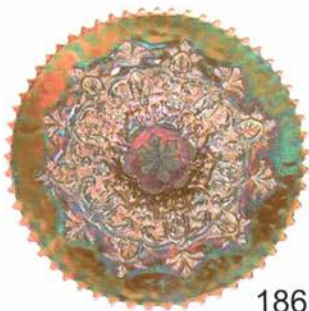
281 Fenton Contemporary Amethyst Good Luck 12 1/2" Chop Plate.

283 Fenton Contemporary Aqua Opal Holly 10" Plate.

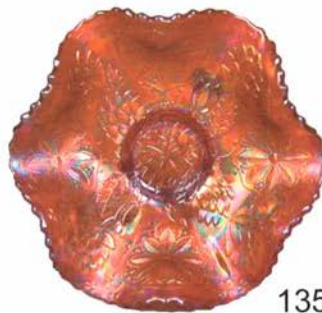
284 AIG Contemporary Vaseline Homestead 10" Chop Plate.

**Remmen Auction Service would like to thank you all for attending.**

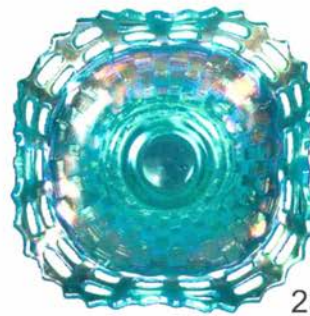
We are always in search of high quality Carnival Glass, please call us for all your auction needs.



186



135



231



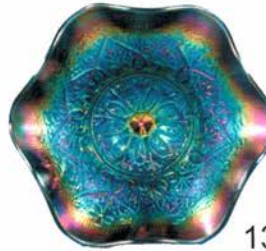
198



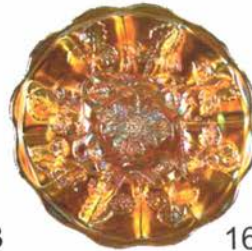
250



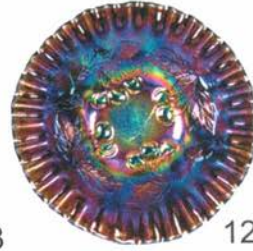
248



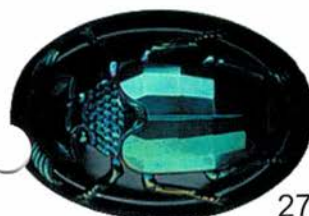
133



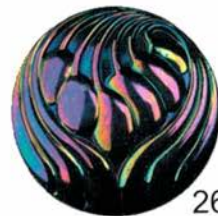
163



123



273



268



272



270



26

# Remmen Auction & Appraisal Service

P. O. Box 301398 • Portland, Oregon 97294-9398  
Phone: (503) 256-1226 • Cell Phone: (503) 756-2629

PRESORTED  
FIRST-CLASS MAIL  
U.S. POSTAGE PAID  
CLACKAMAS, OR  
PERMIT NO. 007



122



\*\*\*\*\*AUTO\*\*ALL FOR ADC 460

T10 P3 875  
Lee Markley  
PO BOX 306  
MENTONE IN 46539-0306



16



87



85



109



175



84



146



164



126



127



107