

www.billrichardsauctioneers.com

Proudly Presented by:

Bill Richards

Auctioneers

CARNIVAL GLASS AUCTION

January 19th & 20th

Preview Friday the 19th @ 6:00pm

Preview Saturday 20th @ 8:00am

Auction Saturday 20th @ 10:00am

at the Holiday Inn New Philadelphia, Ohio

Location:

Holiday Inn New Philadelphia

131 S.W. Blue Bell dr.

New Philadelphia, Ohio 44663

Phone Contacts & Reservations:

We have a \$64 rate at the hotel. Reservations must be made by 01/10/06

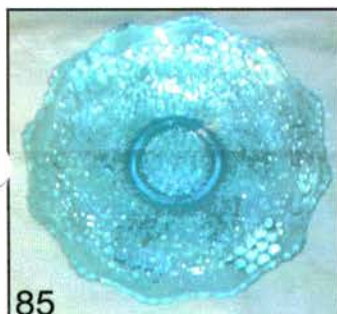
330-339-7731



10



12



85



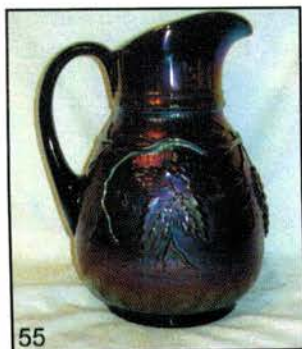
20



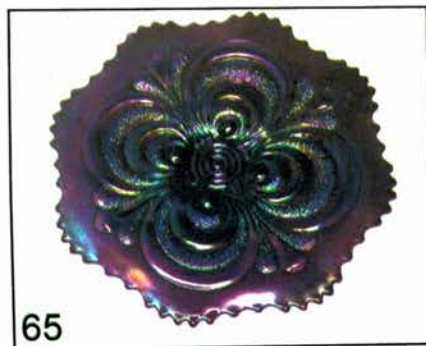
40



48



55



65



70

The New Philadelphia Carnival Glass Auction Jan., 2007

Terms and Conditions

Mail, phone and E- mail bids must be in by January 18th, 2007 or by cell phone on January 19th, 2007 @ 330-261-1401 or 330-261-1488 or 330-719-1640. You can call the Motel and ask for Bill Richards Jr. Or Bill Richards Sr. Or E-mail us at Richar1955@aol.com or Br3auctions@aol.com

Mail Bids Honored Under the Following Conditions:

1. No deposit required. Bidders will take full responsibility to honor any and all bids we execute for them. Payment in full plus postage and handling required after notification and before we ship any item to them.
2. Items are bid on in perfect condition with average or above average iridescence OR as listed in the brochures. Bids will not be carried out when damage on any item has been found during the auction. **PEOPLE AT THE AUCTION ARE RESPONSIBLE FOR FINDING ANY PINHEADS, WEAR, SPOTTINESS, MANUFACTURER'S DEFECTS OR ANY OTHER MINOR FLAWS, ETC.**
3. Successful bidders will be notified by collect call from the auctioneer **SO BE SURE TO INCLUDE PHONE NUMBER OR E-MAIL ADDRESS.**
4. Phone inquiries about the glass or any other questions are welcome.
5. If you have some other person bidding at the auction for you, they must pay for the item before taking it.
6. Any terms or conditions given the day of the auction will supersede any previous published information.
7. Master Card, Visa, Discover and American Express accepted with a 4% clerking charge.



- ___ 1. MILLERSBURG DIAMOND TUMBLER, LIGHT MARIGOLD.
- ___ 2. MILLERSBURG DIAMONDS TUMBLER, GREEN WITH GREAT SATINY IRID.
- ___ 3. MILLERSBURG DIAMONDS TUMBLER HOREHOUND. ONE OF VERY FEW I'VE SEEN. HAS RADIUM IRID.
- ___ 4. MILLERSBURG FEATHER AND HEART TUMBLER GREEN. GOOD SATINY IRID.
- ___ 5. MILLERSBURG MULTI-FRUITS AND FLOWERS HANDLED PUNCH CUP, AMY,. HAS NICE IRID.
- ___ 6. MILLERSBURG HOBSTAR AND FEATHER HANDLED PUNCH CUPS, HAVE 6 SELLING CHOICE
- ___ 7. MILLERSBURG PALM WREATH TANKARD TUMBLER CRYSTAL.
- ___ 8. MILLERSBURG FEATHER AND HEART WATER PITCHER, MARIGOLD. HAS SMALL CHIP NEAR HANDLE
- ___ 9. MILLERSBURG FEATHER AND HEART TUMBLERS, MARIGOLD. HAVE 6 SELLING CHOICE.
- ___ 10. MILLERSBURG PEACOCK @ THE URN 8" I.C.S. MYSTERY BOWL, BLUE WITH EXCELLENT SATINY IRID. IT'S A KEEPER.
- ___ 11. MILLERSBURG FLEUR DE LIS DOME FTD. BOWL, MARIGOLD.
- ___ 12. MILLERSBURG PEACOCK @ URN GIANT COMPOTE, MARIGOLD. HAS MINOR PIN HEADS ON THE STEM. RARE COLOR.
- ___ 13. MILLERSBURG PEACOCK 9 1/2" I.C.S. BOWL, GREEN. THE BEST SATINY EXAMPLE I'VE SEEN.
- ___ 14. NORTHWOOD GRAPE AND CABLE LARGE SIZED FRUIT BOWL, LIGHT HAS GREAT IRID.
- ___ 15. NORTHWOOD GRAPE AND CABLE COVERED CRACKER JAR PURPLE, HAS A SMALL CHIP ON THE LID.
- ___ 16. NORTHWOOD GRAPE AND CABLE 2 HANDLED BON BON, BLUE.
- ___ 17. PAIR OF NORTHWOOD GRAPE AND CABLE CANDLESTICKS, GREEN. SELLING AS PAIR.
- ___ 18. NORTHWOOD GRAPE AND CABLE BREAKFAST SET, PURPLE.
- ___ 19. NORTHWOOD GRAPE AND CABLE CANDLESTICK, PURPLE. FANTASTIC IRID
- ___ 20. NORTHWOOD THIN RIB 14" SWUNG MID SIZED VASE SAPPHIRE BLUE WITH PASTEL PINK AND BLUE IRID. SUPER VASE.
- ___ 21. NORTHWOOD GRAPE AND CABLE LARGE DRESSER TRAY PUMPKIN, MARIGOLD.
- ___ 22. NORTHWOOD GRAPE AND CABLE CANDLESTICK, MARIGOLD PASTEL. HAS PINK HIGHLIGHTS.
- ___ 23. NORTHWOOD GRAPE AND CABLE BREAKFAST OPEN SUGAR ONLY, GREEN.
- ___ 24. NORTHWOOD GRAPE AND CABLE TABLE SET SPOONER, GREEN. HAS GREAT IRID.
- ___ 25. NORTHWOOD GRAPE AND CABLE BUTTER DISH, GREEN.
- ___ 26. NORTHWOOD GRAPE AND CABLE CREAMER, GREEN. HAS GREAT IRID.

- _____ 27. NORTHWOOD GRAPE AND CABLE 8 ½" RUFFLED BOWL PLAIN EXT., PURPLE. HAS NICE MULTI-COLORED IRID.
- _____ 28. NORTHWOOD CRAPE AND CABLE 8 ½" RUFFLED BOWL BASKETWEAVE EXT., DARK MARIGOLD.
- _____ 29. NORTHWOOD GRAPE AND CABLE BREAKFAST SET OPEN SUGAR AND CREAMER, MARIGOLD.
- _____ 30. NORTHWOOD GRAPE AND CABLE 6 PC. TABLE SET, MARIGOLD. HAS EXCELLENT IRID.
- _____ 31. NORTHWOOD GRAPE AND CABLE RUFFLED BOWL PLAIN ESXT., PURPLE. HAS NICE IRID.
- _____ 32. NORTHWOOD GRAPE AND CABLE MASTER BERRY BOWL WITH 3 SAUCES, MARIGOLD. SELLING SAUCES CHOICE.
- _____ 33. NORTHWOOD HANDLED BUSHEL BASKET, BLUE.
- _____ 34. NORTHWOOD HANDLED BUSHEL BASKET, AQUA OPAL.
- _____ 35. NORTHWOOD GOODLUCK P.C.E. BOWL BASKETWEAVE EXT., GREEN. HAS GREAT SATINY IRID.
- _____ 36. NORTHWOOD DANDELION TUMBLER, DARK DARK MARIGOLD.
- _____ 37. NORTHWOOD GRAPE AND CABLE P.C.E. BOWL BASKETWEAVE EXT., DARK MARIGOLD. NICE IRID.
- _____ 38. NORTHWOOD WILD STRAWBERRY RUFFLED SAUCE, PURPLE.
- _____ 39. NORTHWOOD LEAF AND BEADS FTD. ROSE BOWL, AQUA OPAL.
- _____ 40. LOETZ LION FIGURAL INKWELL WITH INSERT, GREEN WIRTH PURPLE IRID. IN ORIGINAL ORMALU FRAME.
- _____ 41. DUGAN TARGET SQUATTY 5 3/4" FLARED VASE HAS 7" TOP AND 3/12" BASE, PEACH OPAL. EXTREMELY RARE SHAPE AND SIZE. HAS GREAT IRID.
- _____ 42. DUGAN QUESTION MARK STEMMED HANDLED BON BON, PEACH OPAL.
- _____ 43. DUGAN SWAN MASTER SALT, BLUE OPAL. NON IRID.
- _____ 44. DUGAN PEACOCK @ THE FOUNTAIN TUMBLER, BLUE. HAS GREAT IRID.
- _____ 45. JENEATTE FIGURAL RABBIT BANK, MARIGOLD.
- _____ 46. WESTMORELAND DAISY WREATH 8 ½" I.C.S. BOWL, MARIGOLD OVER MILK GLASS. BEAUTIFUL.
- _____ 47. U.S. GLASS PALM BEACH 6 ½" SWUNG VASE WHITE. HAS EPOXY ON THE BASE.
- _____ 48. DUGAN DOGWOOD DOME FTD. 10 RUFFLED BOWL, ELECT. PURPLE. HAS GREAT IRID.
- _____ 49. DUGAN GRAPE DELIGHT NUT BOWL, PURPLE. HAS MULTI-COLORED METALLIC IRID.
- _____ 50. DUGAN MANY FRUITS RUFFLED PUNCH BASE, ELECT. PURPLE. EXTREMELY RARE BASE, HARD TO FIND.
- _____ 51. DUGAN WISHBONE AND SPADES INDIVIDUAL RUFFLED BERRY BOWL BASKETWEAVE EXT. PEACH OPAL.

- _____ 52. DUGAN FOLDING FAN T.C.E RUFFLED COMPOTE PEACH OPAL.
- _____ 53. DUGAN GRAPE DELIGHT FTD. ROSE BOWL, WHITE.
- _____ 54. DUGAN LEAF RAY HANDLED NAPPY, PEACH OPAL.
- _____ 55. DUGAN VINEYARD HANDLED WATER PITCHER ELECTRIC PURPLE.
HAS GREAT IRID.
- _____ 56. DUGAN VINEYARD TUMBLERS, ELECT PURPLE. HAVE 5 SELLING
CHOICE.
- _____ 57. DUGAN VINEYARD TUMBLER, PURPLE GOLDISH IRID.
- _____ 58. DUGAN HOLLY AND BERRY TRI-CORNERED HANDLED NAPPY,
ELECT. PURPLE. HAS SMALL CHIP ABOVE THE HANDLE.
- _____ 59. DUGAN LEAF RAY NAPPY, PEACH OPAL.
- _____ 60. DUGAN LATTICE AND HEART EXT. 6 3/4" STRAIGHT UP NUT BOWL,
ELECT. PURPLE.
- _____ 61. IMPERIAL HEAVY GRAPE 10" LARGE MASTER BERRY BOWL, AMBER
WITH ELECT. IRID.
- _____ 62. IMPERIAL OPEN ROSE 9" FLAT PLATE, HELIOS GREEN.
- _____ 63. IMPERIAL OPEN ROSE 9" FLAT PLATE, DARK MARIGOLD WITH
EXCELLENT IRID.
- _____ 64. IMPERIAL SCROLL EMBOSSED 8 3/4" RUFFLED MASTER BERRY
BOWL, ELECT. PURPLE.
- _____ 65. IMPERIAL SCROLL EMBOSSED 9" FLAT PLATE, LAVENDER.
- _____ 66. IMPERIAL SCROLL EMBOSSED 7 1/2" RUFFLED BOWL, ELECT. PURPLE
- _____ 67. IMPERIAL SCROLL EMBOSSED 9" FLAT PLATE, PURPLE.
- _____ 68. IMPERIAL SCROLL EMBOSSED 9" FLAT PLATE, DARK MARIGOLD
WITH RADIUM TYPE IRID.
- _____ 69. IMPERIAL 5 3/4" SCROLL EMBOSSED RUFFLED SAUCE WITH FILE
EXT., ELECT. PURPLE.
- _____ 70. IMPERIAL RIPPLE 10" SWUNG VASE, ELECT. PURPLE.
- _____ 71. IMPERIAL SAND AND SHELL 7 1/2" RUFFLED BOWL, ELECT PURPLE.
- _____ 72. IMPERIAL HEAVY GRAPE 6" DEEP ROUND BOWL, ELECT. PURPLE.
- _____ 73. IMPERIAL PANSY BREAKFAST SET CREAMER, ELECT. PURPLE.
- _____ 74. IMPERIAL ZIPPERED HEART RUFFLED SMALL SIZE IND. BERRY
BOWL, ELECT. PURPLE.
- _____ 75. IMPERIAL HEAVY GRAPE 8" FLAT PLATE, ELECT. PURPLE.
- _____ 76. FENTON FINE RIB 10" SWUNG VASE, CHERRY RED WITH FANTASTIC
IRID. HAS THE ORIGINAL LABEL FROM THE 1932 CHICAGO WORLDS
FAIR.
- _____ 77. FENTON FINE RIB 12" SWUNG VASE, PEACH OPAL. ONE OF 3 I KNOW
OF. DARK MARIGOLD WITH VIVID OPAL TIPS AND GREAT IRID. RARE
VASE.
- _____ 78. FENTON FINE RIB 13" SWUNG VASE, AMBER/REVERSE AMBERINA.
RARE COLOR FOR THIS VASE. HAS GREAT IRID.
- _____ 79. FENTON PERSIAN MEDALLION 6" FLAT PLATE, AMY. ONE OF THE
FEW I'VE SEEN. NICE ITEM.
- _____ 80. FENTON LION I.C.S. BOWL, MARIGOLD.

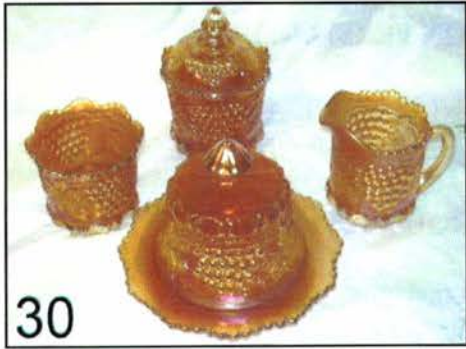
- _____ 81. FENTON PLUME PANELS 10" SWUNG VASE, ELECT. BLUE.
- _____ 82. FENTON KNOTTED BEADS T.C.E. 10" VASE LAVENDER HAS GREAT IRID.
- _____ 83. FENTON FINE RIB 12" SWUNG VASE, MARIGOLD .
- _____ 84. FENTON FINE RIB 12' SWUNG VASE, AMBER.
- _____ 85. FENTON LEAF CHAIN 7 ½" FLAT PLATE, CELESTE BLUE. THE ONLY ONE I'VE EVER SEEN IN THIS COLOR. HAS ONE CHIPPED POINT BUT EXTREMELY RARE PLATE.
- _____ 86. FENTON ORANGE TREE 9" FLAT PLATE, MARIGOLD.
- _____ 87. FENTON RUSTIC 15" SWUNG VASE, GREEN. HAS NICE MULTI-COLORED IRID.
- _____ 88. FENTON LOTUS AND GRAPE 9" FLAT PLATE, MARIGOLD. HAS NICE IRID. BUT MISSING ONE POINT.
- _____ 89. FENTON BUTTERFLY AND FERN GROUND BASED TUMBLER. AMY.
- _____ 90. FENTON VINTAGE 9" 6 RUFFLED BOWL, GREEN. HAS NICE SATINY IRID.
- _____ 91. FENTON DRAGON AND LOTUS SPATULA FTD. BOWL, BLUE. HAS BRILLIANT IRID.
- _____ 92. FENTON SAIL BOATS 5 ½" RUFFLED SAUCE, LIGHT MARIGOLD.
- _____ 93. FENTON SAIL BOATS 6" RUFFLED SAUCE, MARIGOLD WITH GREAT IRID.
- _____ 94. FENTON PERSIAN MEDALLION 10" RUFFLED BOWL, BLUE. NICE SATINY IRID.
- _____ 95. FENTON ORANGE TREE PUNCH BOWL, BASE AND SIX CUPS, MARIGOLD. SELLING AS A SET.
- _____ 96. FENTON BUTTERFLY AND BERRY TUMBLERS, MARIGOLD. HAVE 4 SELLING CHOICE.
- _____ 97. FENTON GARLAND FTD. ROSE BOWL, BLUE. NICE IRID.
- _____ 98. FENTON PEACOCK AND GRAPE I.C.S. COLLAR BASED BOWL, MARIGOLD.
- _____ 99. FENTON VINTAGE TRI-CORNERED 5 ½" SAUCE, BLUE. HAS GREAT IRID.
- _____ 100. FENTON STIPPLED RAYS TRI-CORNERED BRIDES BASKET WITH METAL HANDLE, MARIGOLD.
- _____ 101. FENTON LEAF CHAIN 9" RUFFLED BOWL, BLUE. HAS NICE SATINY IRID.
- _____ 102. FENTON ACORNS 7 ½" RUFFLED BOWL, BLUE. HAS RED AND GOLD HIGHLIGHTS.
- _____ 103. FENTON DRAGON AND LOTUS COLLAR BASED RUFFLED BOWL, MARIGOLD.
- _____ 104. FENTON 3 FRUITS 9" FLAT PLATE, GREEN. MIGHT BE THE UGLIEST PIECE OF FENTON I'VE EVER SEEN.
- _____ 105. FENTON ORANGE TREE STANDARD SIZE MUG, VASELINE WITH MARIGOLD OVERLAY.
- _____ 106. FENTON DRAGON AND LOTUS I.C.S. BOWL, BLUE. SATINY.

- ___ 107. FENTON CHERRY CHAIN 5 3/4" RUFFLED BERRY BOWL, BLUE. SILVERY.
- ___ 108. FENTON PINE CONE RUFFLED SAUCE, LIGHT MARIGOLD.
- ___ 109. FENTON BLACKBERRY SPRAY J.I.P. HAT T.C.E., VASELINE WITH MARIGOLD OVERLAY. HAS A LARGE CHIP ON THE BASE.
- ___ 110. FENTON PEACOCK @ THE URN RUFFLED BOWL, FROSTY WHITE WITH GOOD IRID.
- ___ 111. NORTHWOOD GRAPE AND CABLE VARIANT 9" FLAT PLATE, ELECT. PURPLE.
- ___ 112. NORTHWOOD 4 PILLARS 7" SQUATTY VASE, AMY. HAS RADIUM IRID.
- ___ 113. NORTHWOOD PILLAR AND RIB 7" SQUATTY VASE, BLUE. RARE SIZE AND COLOR.
- ___ 114. NORTHWOOD GRAPE AND CABLE 9" FLAT PLATE BASKET WEAVE EXT., GREEN WITH GREAT MULTI-COLORED IRID.
- ___ 115. NORTHWOOD 3 FRUITS STIPPLED PLATE, DARK MARIGOLD WITH GREAT IRID.
- ___ 116. NORTHWOOD FINE RIBBED 9 3/4" SWUNG VASE, AMY. PRETTY.
- ___ 117. NORTHWOOD GRAPE AND CABLE TUMBLER, PURPLE WITH ELECT. BLUE IRID.
- ___ 118. NORTHWOOD GRAPE AND CABLE TUMBLER, PURPLE WITH GREAT MULTI-COLORED HI-LITES
- ___ 119. NORTHWOOD STRAWBERRY 9" FLAT PLATE BASKET WEAVE EXT, PURPLE. HAS RADIUM TYPE IRID.
- ___ 120. NORTHWOOD 3 FRUITS STIPPLED 9" PLATE RIBBED EXT. BLACK AMY. HAS BEAUTIFUL IRID. GREAT PLATE.
- ___ 121. NORTHWOOD GRAPE AND CABLE RUFFLED BOWL PLAIN EXT. MARIGOLD. HAS BRIGHT PINK IRID.
- ___ 122. NORTHWOOD STRAWBERRY 8 1/2" RUFFLED BOWL BASKETWEAVE EXT., PURPLE.
- ___ 123. NORTHWOOD 3 FRUITS 9" PLATE BASKETWEAVE EXT., MARIGOLD.
- ___ 124. NORTHWOOD FINE CUT AND ROSES FTD. ROSE BOWL, GREEN.
- ___ 125. NORTHWOOD FINE CUT AND ROSES FTD. ROSE BOWL, PURPLE.
- ___ 126. NORTHWOOD GRAPE AND CABLE WATER PITCHER, LIGHT MARIGOLD.
- ___ 127. NORTHWOOD GRAPE AND CABLE TUMBLER, DARK MARIGOLD. HAS GREAT IRID.
- ___ 128. NORTHWOOD PEACOCK @ THE FOUNTAIN BUTTER DISH, LID ONLY, DARK MARIGOLD.
- ___ 129. NORTHWOOD GRAPE AND CABLE 8 RUFFLED BOWL BASKETWEAVE EXT., GREEN
- ___ 130. NORTHWOOD GRAPE AND CABLE STIPPLED 9" FLAT PLATE, ELECT. BLUE. ONE OF THE BEST I'VE SEEN. HAS GREAT ELECT. IRID.
- ___ 131. NORTHWOOD WISHBONE FTD. RUFFLED BOWL, MARIGOLD.
- ___ 132. NORTHWOOD PILLAR AND RIBBED 10 1/2" VASE, RUSSET GREEN.
- ___ 133. NORTHWOOD DAISY AND PLUME RUFFLED FTD. COMPOTE, MARIGOLD.

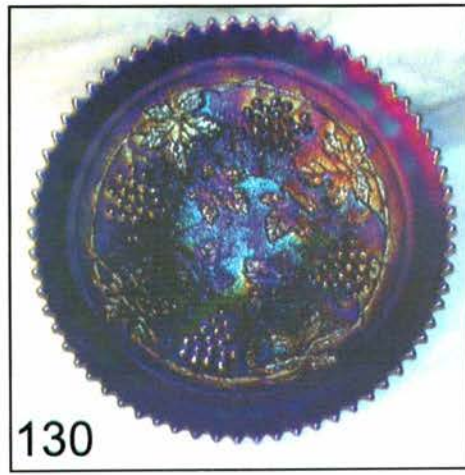
- _____ 134. NORTHWOOD FINE CUT FLOWERS FTD. COMPOTE, MARIGOLD.
- _____ 135. NORTHWOOD GRAPE AND CABLE GIANT COMPOTE, MARIGOLD.
RARE AND DESIRABLE, NOT OFTEN FOUND IN MARIGOLD.
- _____ 136. NORTHWOOD ROSE SHOW 9" FLAT PLATE, DARK DARK MARIGOLD.
PERFECT WITH GREAT IRID.
- _____ 137. IMPERIAL MORNING GLORY AND DRAPE MINIATURE 4 ½" SQUATTY
VASE, DARK MARIGOLD. RARE SHAPE AND SIZE. GREAT IRID.
SCARCE VASE.
- _____ 138. IMPERIAL MORNING GLORY UNFLARED 4 ½" VASE, MARIGOLD.
GREAT IRID. RARE SHAPE AND SIZE.
- _____ 139. IMPERIAL MORNING GLORY 6" SWUNG VASE, PURPLE. HAS ELECT.
IRID. GREAT VASE.
- _____ 140. IMPERIAL MORNING GLORY 16" SWUNG FUNERAL VASE WITH A 4
¾" BASE, ELECT. PURPLE.
- _____ 141. IMPERIAL MORNING GLORY 4" SQUATTY VASE, ELECT. PURPLE. ONE
OF THE SMALLEST I'VE SEEN.
- _____ 142. IMPERIAL EMBOSSED SCROLL 7 ½" RUFFLED BOWL WITH NORTHERN
STAR EXT., PURPLE.
- _____ 143. IMPERIAL ACANTHUS 6 RUFFLED BOWL, DARK MARIGOLD. ONE OF
THE BEST YOU'LL FIND.
- _____ 144. IMPERIAL BULLS EYE AND BEADS 10" SWUNG VASE, DARK
MARIGOLD. NICE IRID.
- _____ 145. IMPERIAL PROPELLER STEMMED RUFFLED COMPOTE, SMOKE WITH
EXCELLENT IRID. A RARE COLOR.
- _____ 146. IMPERIAL PROPELLER STEMMED RUFFLED COMPOTE, MARIGOLD.
- _____ 147. IMPERIAL PANSY 8 ½" RUFFLED BOWL, ELECT. PURPLE.
- _____ 148. IMPERIAL RIPPLE STANDARD SIZE 10 ½" VASE, MARIGOLD.
- _____ 149. IMPERIAL PANSY HANDLED NAPPY, MARIGOLD.
- _____ 150. IMPERIAL GRAPE LARGE FLARED 10" MASTER BERRY BOWL, AMBER.
- _____ 151. IMPERIAL LUSTER ROSE 10" LARGE FLARED MASTER BERRY BOWL,
AMBER.
- _____ 152. IMPERIAL 474 MILK PITCHER, HELIOS GREEN.
- _____ 153. IMPERIAL SCROLL EMBOSSED 6 RUFFLED BOWL, ELECT. PURPLE.
- _____ 154. IMPERIAL GRAPE 8 ½" RUFFLED BOWL, DARK MARIGOLD.
- _____ 155. IMPERIAL GRAPE 10 ¾" MASTER BERRY BOWL, BLUE.
- _____ 156. IMPERIAL RIPPLE VASE, MARIGOLD.
- _____ 157. FENTON 2 FLOWERS SPATULA FTD. BOWL, MARIGOLD.
- _____ 158. FENTON ROSE WREATH 2 HANDLED BON BON, GREEN.
- _____ 159. FENTON HOLLY SQUARE RUFFLED HAT SHAPE, BLUE.
- _____ 160. FENTON PERSIAN MEDALLION 6" FLAT PLATE, VASELINE WITH
MARIGOLD OVERLAY.
- _____ 161. FENTON 2 FLOWERS LARGE FTD. RUFFLED BOWL, MARIGOLD.
- _____ 162. FENTON 2 FLOWERS 9" DEEP ROUND BALL FTD BOWL, MARIGOLD.
HAS A CHECK IN THE BODY OF THE BOWL.

- _____ 163. FENTON SWAN MASTER SALT COBALT, BLUE NOT IRIDIZED
- _____ 164. FENTON SWAN MASTER SALT CRYSTAL, AMBER
- _____ 165. FENTON PERSIAN MEDALLION HANDLED BON BON PERSIAN, BLUE NOT IRIDIZED
- _____ 166. MILLERSBURG MULTI FRUITS AND FLOWERS PUNCH BOWL AND BASE, RADIUM AMY. PUNCH BOWL THUMBNAIL SIZE CHIP ON TOP OUTER EDGE.
- _____ 167. MILLERSBURG STRAWBERRY WREATH 8" DEEP ROUND BOWL, MARIGOLD. HAS T.C.E., RARE SHAPE.
- _____ 168. MILLERSBURG LEAF AND LITTLE FLOWERS STEMMED FLARED MINIATURE COMPOTE, AMY. WITH RADIUM IRID.
- _____ 169. NORTHWOOD DAISY AND PLUME 3 FTD. ROSE BOWL WITH BERRY INT. PURPLE. MAY HAVE SOME TINY CHIPS ON LEGS.
- _____ 170. NORTHWOOD 3 FRUITS PLATE BASKET WEAVE EXT. PURPLE.
- _____ 171. NORTHWOOD 3 FRUITS PLATE, LAVENDER. HAS GOLDISH IRID. AND A CHIP ON THE INSIDE OF THE COLLAR BASE.
- _____ 172. NORTHWOOD FINE CUT AND ROSES CANDY DISH FANCY INT., WHITE. HAS MINOR DAMAGE ON ONE FOOT.
- _____ 173. DUGAN PODS AND POSIES BERRY BOWL, ELECT. PURPLE. HAS A SMALL CRACK.
- _____ 174. FENTON 2 ROW OPEN EDGE RUFFLED BASKET, RED. HAS NICE IRID.
- _____ 175. FENTON PEACOCK AND GRAPE 8 ½" T.C.E. BOWL, ELECT. AMY.

NOTES:



30



130



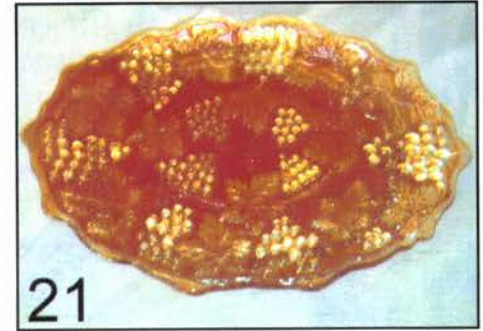
03



76



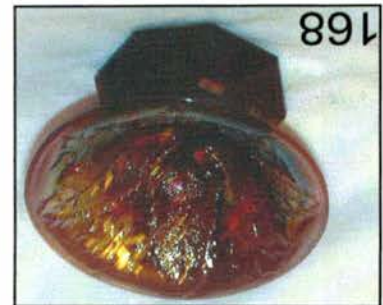
47



21



LEE MARKLEY
 BOX 306
 MENTONE IN 46539



168

Bill Richards Auctioneers
 44 Water Street
 Poland, Ohio 44514
 ADDRESS SERVICE REQUESTED

PRSRAT STD
 US POSTAGE
PAID
 STRUTHERS, OH
 PERMIT NO 1955