

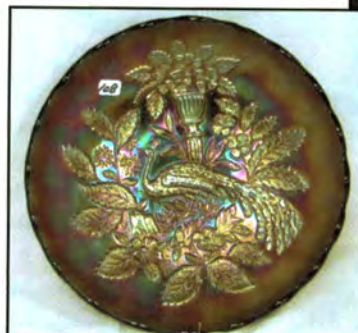
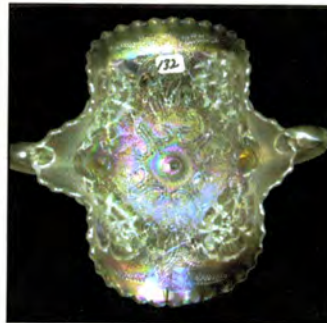
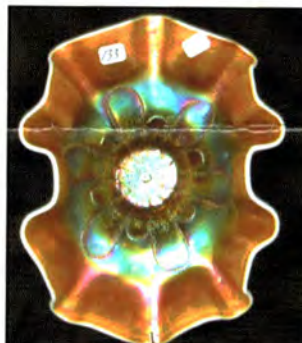
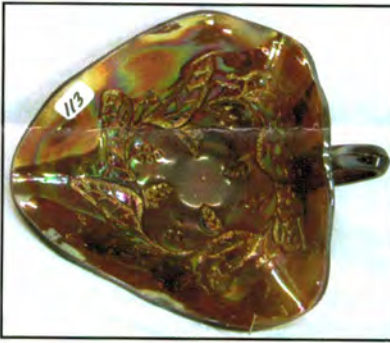
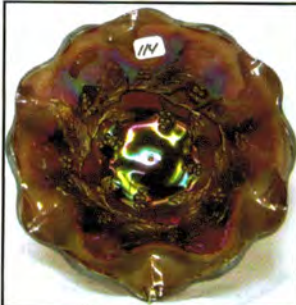
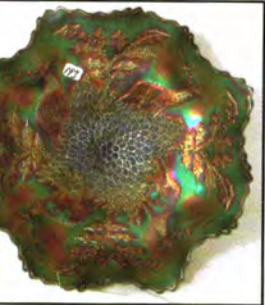
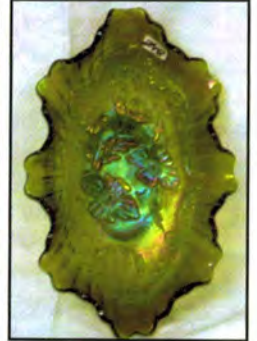
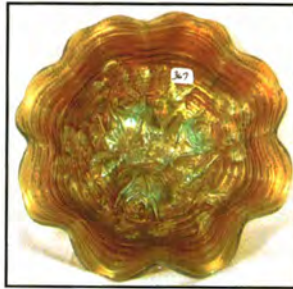
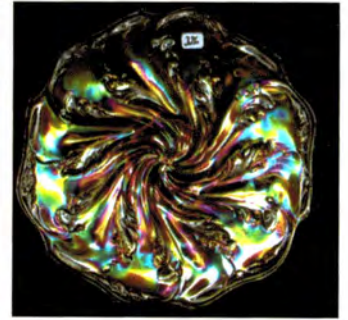
CARNIVAL G
Saturday, November 4,
 FRIDAY PREVIEW: Nov
THE LAUGHLIN & C

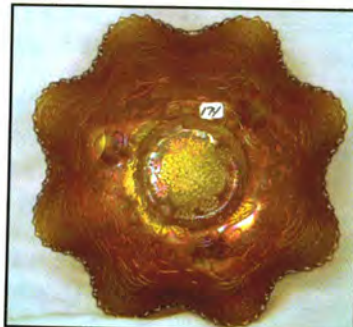
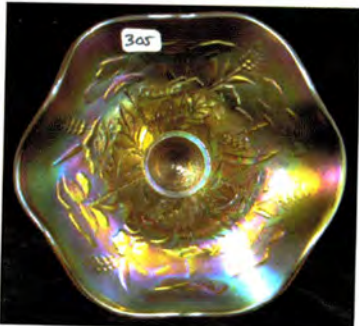
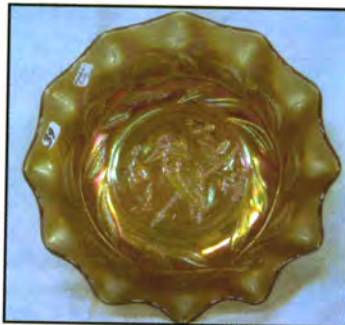
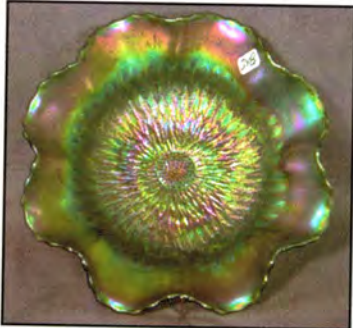
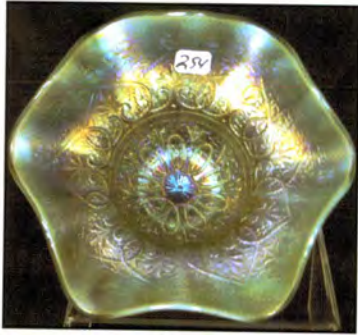
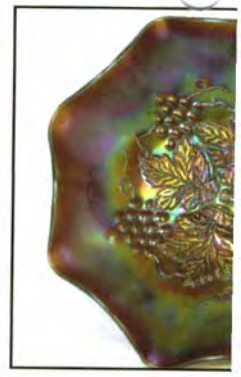
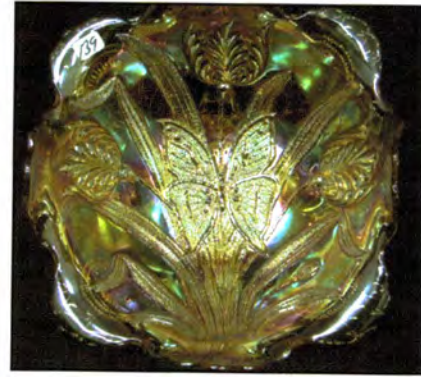
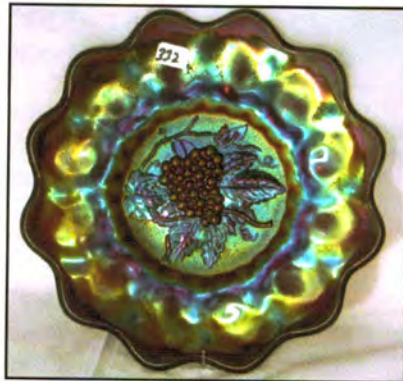
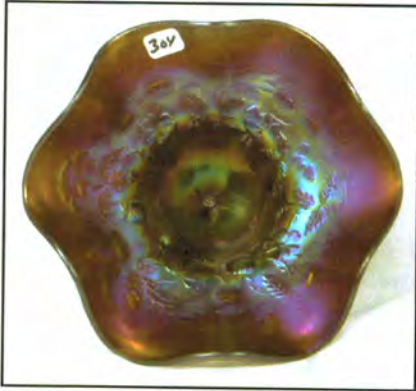
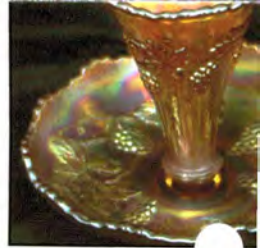
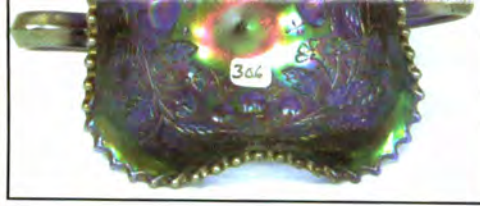
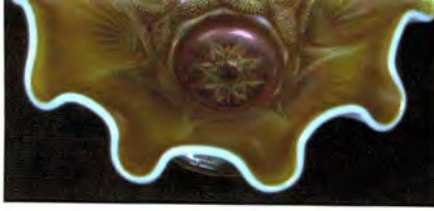
MASS AUCTION

2006 - 9:00 a.m. Sharp

ber 3 - 12:00 Noon - 5:00 p.m.

LARDY COLLECTION





*** NO BUYER'S FEE ***

Make Reservations EARLY

Days Inn: 660-882-8624 • Comfort Inn: 660-882-5311

ABSENTEE

PLEASE NOTE: There is a **\$5 handling charge for each successful bid.** This is in addition to the cost of postage, insurance and packing. **Successful bidders will be notified in 1 to 3 days by the auctioneer.** Bids to Auctioneer Mickey Reichel, 18350 Hunters Ridge Ct., Boonville, MO 64616. Please include your name, address, phone, I.D. and Social Security Number and References. Announcements not made for Accidents or Sold Items.

Call for additional information: 660-882-5292

FAX: 660-882-5292 (evening hours)

E-mail: mreichel@earthlink.net

Held Inside the Mickey

1 Mile North of I-70 on Hwy. 5, Exit 101, Boonville, MO

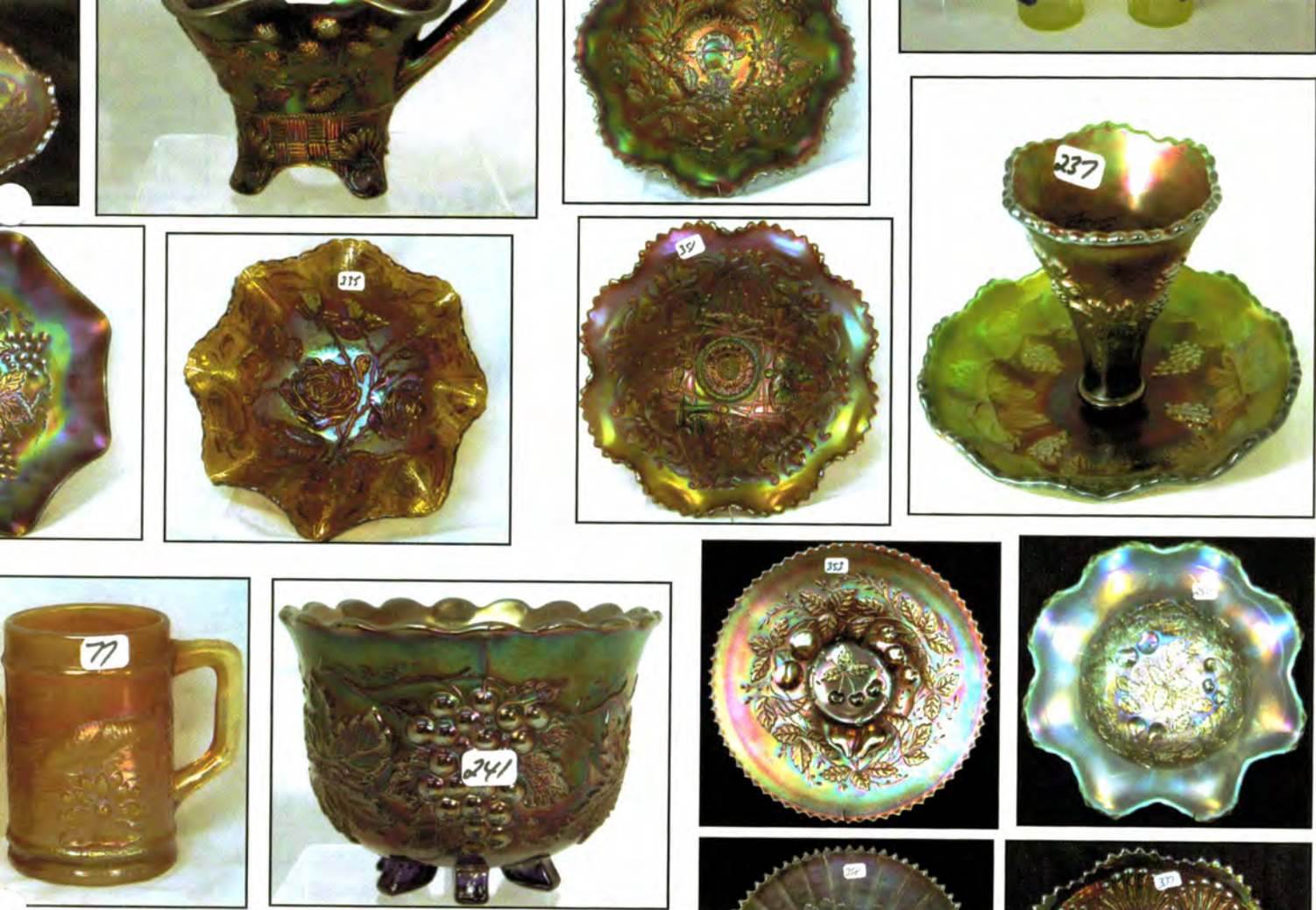
TERMS: Cash or Good Check

4% Clerking Fee on all purchases except for

WEB SITE: www.mickeyauction.com

*** No return on any items once they leave the store ***





PREMIUM ★ ★ ★

at one of these local motels:

Super 8: 660-882-2900 • Holiday Inn: 660-882-6882

BID POLICY:


I bid which will be added to the selling price for all write-in bids. Your write-in bid will be entered just as if you are present and bid in person. Lowest bid wins (so be sure to include your **phone number**). Direct mail bids accepted. St. Louis, MO 65233-2971. Terms: Cash or Check accepted with proper ID. Day of the auction supercede all printed material. Not Responsible for shipping.

Days or 660-882-5283 evenings before 9:00 p.m.

(Start FAX transmission after beep)

AWK-SHN.com

Reichel Auction Center

Missouri • 20 Miles West of Columbia, MO on I-70
 Discover, American Express, Visa and MasterCard accepted.
 Payment of cash or check. Proper I.D. required. 

www.AWK-SHN.com

the Auction Center (No Exceptions) * * *



SEE REVERSE FOR DETAILS

1. P.O. - Ruffled Stippled Flower Bowl
2. P.O. - 9-1/2" Ruffled, ft'd. Dugan Cherries Bowl
3. P.O. - Ruffled Leaf Rays Nappy
4. P.O. - 7" Ruffled Bells/Beads Bowl
5. P.O. - 7" Fish Scales/Beads Ruffled Bowl
6. P.O. - Dugan Cherries, CRE, ft'd. Nut Bowl
7. P.O. - 6" Ruffled Petal/Fan Bowl
8. P.O. - 8" Deep Ski Star/Compass Bowl
9. P.O. - Beaded Panels Tri-Cornered Compote
10. P.O. - 8" Ruffled Enamel Stippled Flower Bowl
11. P.O. - 6-1/4" Ruffled Question Mark Compote
12. P.O. - 7-1/2" Deep Ruffled Flowers/Frames Bowl
13. P.O. - Question Mark Stemmed Bonbon
14. P.O. - Nautilus Bowl
15. P - Nautilus Bowl, Signed Northwood
16. P.O. - 8-1/2" WM. Petals Bowl
17. P.O. - 8", WM. Petals Bowl
18. P.O. - 9" Ruffled Apple Blossoms/Twigs Bowl
19. P.O. - 9" CRE, Caroline Bowl
20. MMG - 8-1/2", 6 Ruffle, WM. Smooth Ray Bowl
21. Saph. Stretch - N 657 Pattern, Candlesticks
22. Stretch Vaseline - Rib Optic Pitcher w/lid and 6 Blue Handled Cups
23. Stretch Vas. Opaline - 9" Candlesticks, #718 Pattern
24. M - Enamel Banded Iris Tankard Pitcher
25. M - Imp. Tigerlily Water Pitcher
26. Dk. M - Imp. 474 Pattern Water Pitcher
27. Dk. M - Wreath Cherry Tankard Pitcher
28. P - N Peacock/Fountain Water Pitcher
29. P - Dugan Mapleleaf, 7 pc. Water Set
30. M - Hobstar Band, 6 pc. Water Set
31. M - Star Medallion Milk Pitcher
32. M - N Raspberry Milk Pitcher
33. M - 9" Waffle Block Basket w/Handle
34. Crystal - Carnival 10" Tall Lemonade Pitcher
35. M - 6-1/2" Ribbed Vases? - 2 x \$
36. Beautiful M - Imp. Grape Decanter
37. B - Hen/Chicks Covered Dish
38. M - Australian, 6-1/4" Block/Arches Pitcher
39. M - Australian, 9-1/4" Ruffled, Kingfisher w/Wattle Blossom Bowl
40. M - 9" Rnd. Australian Diamond Cut Huge Bowl
41. M - 8" Deep Cut Pattern ?, European Bowl
42. Flashed M - 11" Plume/Bow European Vase - ?
43. Citrine - 12-1/4" N Thin Rib Vase
44. G - 6-1/2" Squatty N Fine Rib Vase
45. M - Mary Ann Vase - Chip
46. Rare Smoke - 6" Imp. Heavy Diamond Vase
47. M - 6" Diamond/Rib Vase
48. RARE G - Imp. Columbia Vase
49. M - Wreath Rose Rosebowl
50. P.O. - Honeycomb Rosebowl
51. P - Fine Cut/Roses Rosebowl
52. Custard - Fine Cut/Roses Rosebowl - No Irid.
53. Light I.B. - Fine Cut/Roses Rosebowl
54. Dk. I.B. - Fine Cut/Roses Rosebowl
55. P - Fine Cut/Roses Rosebowl
56. AO - Leaf and Bead Rosebowl
57. AO - Drapery Rosebowl
58. M - Fine Cut/Roses ft'd. Bowl
59. AO - Fine Cut/Roses ft'd. Bowl
60. W - Fine Cut/Roses ft'd. Bowl
61. Rare Amber - Fine Cut/Rose ft'd. Bowl
62. W - Cosmos & Cane Berry Bowl
63. W - Hammered Bell Item
64. W - Leaf Rays Nappy
65. W - 6" Rnd. Persian Garden Bowl
66. W - 7" Persian Garden Plate
67. W - 7-1/2" Grape Vine Lattice Ruffle Plate
68. W - N, 7", Drapery Tri-Corner Bowl
69. W - 9-1/2", Low, 10 Ruffle Fanciful Bowl
70. Blue - Beaded Shell Mug
71. P - Beaded Shell Mug
72. M - Beaded Shell Mug - Super
73. M - Stork/Rushes Mug
74. A - Stork/Rushes Mug
75. P - Fishermans' Mug
76. BA - Heron Mug
77. M - Fishermans' Mug - Great
78. M - Little Bo-Peep Mug - Scarce
79. M - Estate Mug
80. Coke Bottle Green - Singing Birds Mug - No Irid
81. M - Singing Birds Mug
82. G - Singing Birds Mug
83. G - Singing Birds Mug - M/Overlay
84. Old M - Stippled Robins Mug
85. Blue Custard - Orange Tree Mug - No Irid
86. BA - Orange Tree Mug - 3" Base
87. M - Orange Tree Mug - 2-1/2" Base
88. Aqua - Orange Tree Mug - 2-1/2" Base
89. A - Orange Tree Mug - 2-1/2" Base
90. B - Orange Tree Mug - 3" Base
91. B - Orange Tree Mug - 3" Base
92. B - Orange Tree Mug - 2-1/2" Base
93. RED Slag - Orange Tree Mug - 3" Base
94. RED - 6" Holly Hat
95. RED Amberina - 6" Blackberry Spray Hat
96. RED Amberina - JIP, O.E., B.W. Hat
97. RED - 8-1/4" ICS Dragon/Lotus Bowl
98. Pale W - 9-1/2" Orange Tree Plate
99. A - Spat. ft'd. 9" Grape/Cable Plate
100. Awesome M - 9" Stippled Peacocks Plate
101. Renninger B - 9" Stippled Peacocks Plate (Tip Off)
102. P - 9" Grape/Cable Plate w/BW Exterior
103. Ice B - PCE Nippon Bowl
104. Pretty B - PCE Peacocks Bowl
105. P - N, PCE Strawberry Bowl
106. G - 8-3/4" N, 3 Fruits Plate - BW Exterior
107. P - N, ft'd. Wishbone Bowl
108. P - Mlbg. 10" ICS Peacock/Urn Bowl (Super Satin)
109. M - Mlbg. Holly Whirl Bonbon
110. A - Mlbg. ICS 7" Grape Wreath Bowl w/Feathered Leaf
111. PM - Mlbg. Little Stars Ruffled Bowl
112. M - Mlbg. 5-1/4" Rnd. Hanging Cherries Bowl
113. Radium A - Mlbg. Holly Sprig, Tri-Corner Nappy
114. Radium A - Mlbg. 7" Ruffled Holly Sprig Bowl
115. M - Mlbg., 3/1 Dome Base Fleur De Lis Bowl
116. P - Mlbg. 9" Round, Flared, Rays/Ribbon Deep Bowl
117. A - Mlbg. 10" Whirling Leaves Bowl - Ruffled
118. G - Mlbg. 10" Ruffled Primrose Bowl - Satin
119. P - 9-1/2" Mlbg., Radium, Ruffled Primrose Bowl
120. A - Mlbg. Peacocks Bowl - No Bee or Beads
121. M - Stork/Rushes Butter Dish
122. M - Stork/Rushes Spooner
123. W - 6-3/4" Ruffled Grapevine/Lattice Bowl
124. M - Whimsey, JIP, Circle Scroll, Hat from Tumbler
125. Smoke - 6" Ruffled Rococo Bowl

- _____ 126. M - Wreath Rose Whimsey - Tri-Corner Dish
- _____ 127. PO - 9", 10 Ruffle Double Stem Rose Bowl
- _____ 128. Lav. Smoke - 7-3/4" Rnd. Double Stem Rose Bowl
- _____ 129. Lav. Smoke - 8-1/2", 10 Ruffle, Wind Flower Bowl
- _____ 130. Blue - 9", 6 Ruffle Wind Flower Bowl
- _____ 131. M - Wind Flower, Tri-Corner Nappy
- _____ 132. W - Banana Shape, Puzzle Stem Bonbon
- _____ 133. P.O. - 9-1/2" Stippled Petals Banana Shape Bowl
- _____ 134. P.O. - Dugan Fan Sauce Boat - RARE
- _____ 135. BA - Nautilus Bowl
- _____ 136. BA - 7" Tri-Corner Dugan, 6 Petals Bowl - Electric
- _____ 137. P.O. - 6-1/2" CRE Smooth Ray Plate
- _____ 138. M - ft'd. Dugan Cherries Bowl
- _____ 139. Radium M - 11" Butterfly/Tulip ft'd. Bowl
- _____ 140. RED (?) - 5-1/2" Wreath Cherry Little Bowl
- _____ 141. Yellow Amber - Louisa, 8", Rnd. ft'd. Bowl
- _____ 142. Yellow Amber - WM. Leaf Swirl Compote
- _____ 143. Aqua - 8" Pillow/Sunburst Ruffled Bowl
- _____ 144. M - Windmill Tumbler
- _____ 145. M - Imp. Tigerlily Tumblers - 4 x \$
- _____ 146. M - #474 Goblets - 4 x \$
- _____ 147. M - Tulip/Cane Claret
- _____ 148. M - Interior Rib Goblet (Cuba?)
- _____ 149. Aqua - Imp. Tigerlily Tumbler
- _____ 150. G - Collar Base, Butterfly/Fern Tumbler
- _____ 151. G - Enameled, Forget-Me-Not Tumbler
- _____ 152. B - Enameled, Daisy/Little Flowers Tumbler - 6 x \$
- _____ 153. G - Grape/Cable Tumblers - 3 x \$
- _____ 154. Elec. B - N Peacock Fountain Tumbler
- _____ 155. P - Acorn Burrs Tumblers - 4 x \$
- _____ 156. B - Dugan, Peacock/Fountain Tumblers - 3 x \$
- _____ 157. Old M - Stippled Robin Mug
- _____ 158. P - Singing Birds Mug
- _____ 159. Yellow Vas. - 6" ft'd. Waterlily Ruffled Bowl
- _____ 160. Lime Vas. - 6" ft'd. Two Flowers Bowl
- _____ 161. Powder B - 6" Ruffled Sailboats Bowl
- _____ 162. M - 4-1/2" Kittens, 2 Sides Up Plate
- _____ 163. B - 6-3/4" ft'd. Lotus/Grape Ruffled Bowl
- _____ 164. M - 4-1/4" Whimsey, Pinched, 6 Sided Waterlily & Cattails Bowl
- _____ 165. B - Grape/Gothic Arches Cream Pitcher
- _____ 166. Smoke - Imp. 4-3/4" Rnd. Windmill Bowl - Cute
- _____ 167. P - 5-1/4" Ruffled Zippered Heart Bowl
- _____ 168. G - Peacock Tail Hat (Adv. 1910 Gen. Furniture)
- _____ 169. Powder B - 6", 2 Row O.E. Basket
- _____ 170. M - Fenton Iris Goblet
- _____ 171. M - Scottish Thistle Compote
- _____ 172. G - Wreath Rose Tumbler
- _____ 173. P - Fenton Iris Compote
- _____ 174. Pumpkin M - 10", ft'd. 2 Flowers Bowl
- _____ 175. M - 10" ICS, ft'd. Chrysanthemum/Windmill Bowl
- _____ 176. Great B - 10" Ruffled, 10 Mums Bowl
- _____ 177. Pretty A - 9", 6 Ruffle Thistle Bowl
- _____ 178. B - Orange Tree, 3/1 Edge Bowl
- _____ 179. A - CRE Captive Rose Bowl
- _____ 180. Cobalt B - Dragon/Lotus Collar Base Ruffled Bowl
- _____ 181. G - 8-3/4" Ruffled Captive Rose Bowl
- _____ 182. M - Spat., ft'd., 8-3/4" Low, 8 Ruffle Dragon/Lotus Bowl - Rare Shape
- _____ 183. B - Spat. ft'd. Two Flowers Rosebowl
- _____ 184. G - 9" ft'd. Peacock/Grape Plate
- _____ 185. W - 9-1/4" Ruffled Orange Tree Bowl
- _____ 186. Light M - 9-1/2" Orange Tree Plate
- _____ 187. Scarce G - 9-1/2" Fenton, 3 Fruits Plate
- _____ 188. B - Fenton, Vintage Grape Fernery Bowl
- _____ 189. BA - 7-1/2" Fenton Ruffled Grape/Cable Bowl
- _____ 190. Clam - 10", 6 Ruffle Cherry Chain Bowl
- _____ 191. Powder B - JIP, 7", CRE, Holly Bowl/Whimsey?
- _____ 192. Saph. - 6-3/4" Blackberry Spray Bowl - 2 Sides Up (Vt)
- _____ 193. B - ft'd. 10-3/4" Ruffled Stag/Holly Bowl
- _____ 194. B - 9" ft'd. Deep Stag/Holly Bowl
- _____ 195. G - Spat. ft'd. Dragon/Lotus Ruffled Bowl
- _____ 196. Deep B - 8" ICS Dragon/Lotus Bowl
- _____ 197. B - Spat. ft'd. Peacock/Grape Ruffled Bowl
- _____ 198. M - Birds/Cherries Card Tray Bonbon
- _____ 199. B - Fenton Butterfly Card Tray Bonbon
- _____ 200. Saph. Opal - 6", 6 Ruffle Blackberry Spray Bowl (Rare)
- _____ 201. G - Fenton Ruffled Holly Compote - Scarce
- _____ 202. Rare G - Fenton Peacock/Urn Compote
- _____ 203. Beautiful G - Fenton Ruffled Holly Bowl
- _____ 204. M - 6-3/4" Round Lions Bowl
- _____ 205. Yellow Amber Base - 7-1/2" Fenton, Acorn, 5 Ruffle Bowl - Super Item
- _____ 206. Yellow Vas. - 6-1/2" Fenton, Stippled Rays, Ruffled Bowl
- _____ 207. Yellow Vas. - 6-1/4" Blackberry Spray, 4 Sides Up Hat
- _____ 208. Vaseline - Persian Medallion Bonbon
- _____ 209. Vaseline - 7", ICS Fenton Acorn Bowl
- _____ 210. Vaseline - Horse Medallion, ft'd. Nut Bowl
- _____ 211. Vaseline - Orange Tree Mug - 2-1/2" Base
- _____ 212. Lime Vas. - Orange Tree Mug - 2-1/2" Base
- _____ 213. P - N Dandelion Mug
- _____ 214. B - N Dandelion Mug
- _____ 215. P - N Dandelion Mug
- _____ 216. M - N Dandelion Mug
- _____ 217. Ice B - Knights Templar Dandelion Mug
- _____ 218. Aqua O - Dandelion Mug
- _____ 219. Rich M - 5-3/4" Star/File Plate
- _____ 220. B - 6-1/4" Cherry Chain Plate (O.T. Exterior)
- _____ 221. M - 6-1/4" Cherry Chain Plate (O.T. Exterior)
- _____ 222. M - 6-1/4" Persian Medallion Plate
- _____ 223. M - 6-1/4" Pine Cone Plate
- _____ 224. B - 6-1/4" Pine Cone Plate
- _____ 225. Scarce A - 7-1/2" Fenton Vintage Grape Flat Plate (Radium)
- _____ 226. P.O. - 6-1/4" 4 Flowers Plate
- _____ 227. M - 7" Grapevine/Lattice Plate
- _____ 228. G - Mlbg. 6-3/8" Cosmos Plate/Bowl?
- _____ 229. P - WM. 6-1/4" Scales Plate
- _____ 230. Aqua - WM 6-1/4" Scales Plate
- _____ 231. P - 6-1/4" N Grape/Cable Hand Grip Plate
- _____ 232. G - N 6" Grape/Cable Hand Grip Plate
- _____ 233. G - N 7-1/2" Grape/Cable Plate - 2 Sides Up
- _____ 234. G - 6" Peacock Tail Hat (Adv. Hudson's, TAHLE-QUAH, OK)
- _____ 235. B - 7" Ruffled Lions Bowl
- _____ 236. M - Vintage Grape, 4-3/4" Tall Epergne
- _____ 237. G - Vintage Grape 4-3/4" Tall Epergne
- _____ 238. B - Ruffled Birds/Cherries Compote
- _____ 239. Little Blue Opal - Estate Cream/Sugar Set
- _____ 240. M - Flashed 3-1/2" Tall Mug (Souvenir, Amboy, Minn.)
- _____ 241. Rare Dugan B - Grape Delight Nut Bowl
- _____ 242. Rare M - 9-1/2" Malaga Grape Ruffled Dugan Bowl
- _____ 243. M - Near Cut, Strawberry, 4-1/2" Rnd. Bowl
- _____ 244. P - N Wild Rose Nut Bowl

MICKEY REICHEL
ANTIQUE & AUCTION, L.C.
18350 HUNTERS RIDGE CT.
BOONVILLE, MO 65233-2971

PRESORTED
FIRST CLASS MAIL
US POSTAGE PAID
SEDALIA, MO
PERMIT 217

FIRST CLASS MAIL

RETURN SERVICE REQUESTED

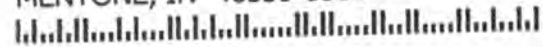
SPECIAL INVITATION TO:

7*32*****MIXED AADC 650

LEE MARKLEY

PO BOX 306

MENTONE, IN 46539-0306



www.AWK-SHN.com

- | | |
|-------------------------------------------------------------------|------------------------------------------------------------------------|
| _____ 245. G - N Paneled Holly Bonbon | _____ 275. Rare M - White Oak Tumbler |
| _____ 246. Smoke - 5" Tall, Little Estate Vase w/Gold | _____ 276. Beautiful B - Vintage Grape Nut Bowl |
| _____ 247. Amber - Oval Pansy Pickle Dish | _____ 277. P.O. - WM., 8" Pillow/Sunburst Ruffle Bowl |
| _____ 248. G - N Poppie Pickle Dish | _____ 278. M - 8" Low ICS Round Up Bowl |
| _____ 249. Elec. B - Fruits/Flowers Bonbon | _____ 279. W - N Ruffled Hearts/Flowers Bowl |
| _____ 250. Super Pastel IBO - Spt. ft'd., 3 Fruits Medallion Bowl | _____ 280. Red - 7-1/4" Low, 6 Ruffle, Leaf Chain Bowl |
| _____ 251. B - Orange Tree Hat Pin Holder | _____ 281. M - Sailboats Wine |
| _____ 252. P - PCE Good Luck Bowl | _____ 282. M - Ruffle Bowl - Rococco Pattern |
| _____ 253. B - N 8 Sided Bushel Basket | _____ 283. Smoke - Rococco Vase |
| _____ 254. Pastel Aq. O - Hearts/Flowers Compote | _____ 284. M - Rococco Vase |
| _____ 255. Custard - 9-3/4" ICS Peacock/Urn Bowl - No Irid | _____ 285. M - Poinsettia Milk Pitcher |
| _____ 256. M - Grape/Cable Powder Jar w/Lid | _____ 286. M - Jelly Jar w/Lid |
| _____ 257. P - N Grape/Cable Powder Jar w/Lid | _____ 287. P - Acorn Burrs Berry Bowl |
| _____ 258. B - Orange Tree Powder Jar w/Lid | _____ 288. P - Scroll Embossed Ruffle Berry Bowl - File Ext. |
| _____ 259. Dk. M - Flute Toothpick | _____ 289. P.O. - 8-3/4" Pulled Loop Vase |
| _____ 260. Scarce G - Flute Toothpick | _____ 290. P.O. - 6" Squatty Target Vase |
| _____ 261. P - Flute Toothpick | _____ 291. G - N Tree Trunk Vt. 7" Vase |
| _____ 262. Lav. - Flute Toothpick | _____ 292. Citrine - N 4 Pillars, Int. Rib, 10-3/4" Vase |
| _____ 263. A - Stork/Rushes Punch Cup | _____ 293. M - 9-1/2" Ripple Vase |
| _____ 264. P - S Repeat Punch Cup | _____ 294. AO - 9-1/2", 4 Pillars Vase |
| _____ 265. A - Grape/Cable Punch Cup | _____ 295. IG - 8-3/4" Drapery Vase |
| _____ 266. G - Stippled Grape/Cable Punch Cup | _____ 296. M - 6" Tornado Vase - Base Repair |
| _____ 267. IB - Acorn Burrs Punch Cup | _____ 297. Celeste - Swan Salt |
| _____ 268. W - Acorn Burrs Punch Cup | _____ 298. IG - Swan Salt |
| _____ 269. B - ft'd. JIP Fine Rib, N Vase - Unlisted | _____ 299. Pink - Swan Salt |
| _____ 270. M - Stream of Hearts Compote | _____ 300. G - Mlbg. Leaf & Little Flowers Sherbet Compote - Base Chip |
| _____ 271. P.O. - Rnd. Puzzle Compote | _____ 301. A - Mlbg. Hanging Cherries Creamer |
| _____ 272. P - 6-1/2" Ruffled Bells/Beads Bowl | _____ 302. P - 6-1/4" Tornado Vase - Base Chip - Super Color |
| _____ 273. M - (Miller Furn.) O.E. Basket - 2 Sides Up | _____ 303. P - Grape and Cable Vase from Hat Pin Holder |
| _____ 274. Radium M - Grape/Cable, N Tumbler | |

304. P - N - Blackberry Compote
305. M - Rare Harvest Poppy Compote
306. Elec. B - Fruits & Flowers Bonbon
307. P - N Raspberry ft'd. Bowl - Daisy & Plume Ext.
308. P - N Leaf & Beads Rose Bowl
309. P - N David and Bows Bowl
310. Pumpkin M - 7-1/4" Wild Strawberry Hand Grip Plate
311. P - N 7-3/4" Grape & Cable Hand Grip Plate
312. M - N Wild Rose ft'd. Bowl
313. P - N Raspberry Gravy Boat - Super One
314. M - N Springtime, 7 pc. Berry Set (Complete)
315. G - N Greek Key Nut Bowl - Smooth Int.
316. P - Grape & Cable, 8 pc. Punch Set - Bowl Cracked
317. W - Peacock at Fountain Punch Cups - 2 x \$
318. P - Memphis Punch Cups - 2 x \$
319. BA - Dragonflies Hat Pin
320. BA - Big Butterfly Hat Pin
321. P - Grape and Cable Hat Pin Holder
322. P - Large Grape & Cable Fruit Bowl
323. P - N Wishbone ft'd. Bowl
324. P - N Grape/Leaves Ruffle Bowl
325. Crystal Opal - Radium, WM. 8-1/2" Carolina Dogwood Bowl
326. M - 6 Ruffle Pony Bowl
327. A - 9" Grape & Cable Spat. ft'd. Plate
328. M - Imp. Hobstar Cookie Jar w/Lid
329. G - 11" Imp. Heavy Grape Chop Plate - Pretty
330. P - 7" Ruffled Heavy Grape Bowl
331. P - 7-3/4" Imp. Heavy Grape Plate
332. P - 8-1/2" Imp. Heavy Grape Plate
333. G - 9-1/2" Imp. Scroll Embossed Plate
334. M - 9" Imp. Open Rose Plate
335. Amber - 8" Open Rose Ruffled Bowl
336. M - 10-1/4" Acanthus Plate - A Beauty
337. M - 8" Stippled Shell & Sand Bowl
338. M - 8-1/4" Rnd. Imp. Hattie Bowl
339. M - Imp. Pansy Cream & Sugar
340. Aqua - WM. 9" Pearly Dots Plate - Rare
341. Blue - Sowerby's 8-1/2" Flora Bowl
342. P - 8" ICS Fanciful Bowl - Unusual Shape
343. P - Starfish Stemmed Bonbon
344. W - Fish Scale & Beads. 7" Plate
345. P - CRE Question Mark Stemmed Plate?
346. Aqua - 7", 6 Ruffle Peacock & Dahlia Bowl
347. Pumpkin M - Grape & Cable Bonbon
348. Fantastic G - Sunflower N Ruffle ft'd. Bowl
349. M - PCE Good Luck Bowl - Lot of Pinks
350. B - Ruffle Stippled Good Luck Bowl
351. Great A - N ft'd. Wishbone Bowl
352. P - 9" N Strawberry Plate - B.W. Ext.
353. M - 9" N Three Fruits Plate - Great
354. P - 9" N Three Fruits Plate - B.W. Ext.
355. A - Bead Cable Rose Bowl - Rays Int.
356. P - N Poppy Pickle Dish
357. W - 8-3/4" N Peacocks Plate - Pl. Bk.
358. W - 9" N Peacocks Plate - Rib Bk.
359. IG - 9" N Peacocks Plate - Rib Bk.
360. Super M - Stippled PCE Peacocks Bowl (Pinks)
361. G - N Paneled Holly Bonbon
362. P - N 6" Wild Strawberry Berry Bowl
363. M - N 9" Nippon Plate
364. Electric Purple - Grape & Cable Butter Dish - Lid
365. W - Peacock at the Fountain Sugar - No Lid
366. P - Grape & Cable Powder Jar Base
367. Aqua - Rose Show Bowl - Marigold Overlay N
368. Honey Amber - Rnd. Palm Beach Berry Bowl
369. M - O.E. Ruffled Blackberry Hat
370. P - Petal & Fan, 5" Berry Bowl
371. P - Ruffle Leaf Rays Nappy
372. G - Near Cut, 6-1/2" Strawberry Bowl
373. M - Inverted Feather Parfait - Neat
374. M - CRE. Ruffle Fenton Holly Compote
375. P.O. - 7-3/4", CRE Single Flower Hand Grip Plate
376. Rich M - CRE, 6" Blackberry Spray Bowl - Fantastic Item
377. M - Dugan Beaded Basket
378. Celeste - Pastel Swan Salt
379. Ice Gr. - Pastel Swan Salt
380. M - Blossom & Band Car Vase
381. M - Crackle Car Vase w/Holder
382. M - Pyrex 63 Insulator
383. G - 5", Rnd. Feathered Serpent Berry Bowl
384. B - 5", Rnd. Little Flowers Berry Bowl
385. M - 4" Rose Bowl Pattern?
386. M - Beaded Star, 6" Ruffle Bowl
387. P - Wreath Cherry Large Banana Bowl
388. Crystal Irid. - 10" Bowl - Pattern ?
389. Red - Stretch Rolled Rim, 6-1/2" Bowl
390. W - Opaque Stretch Elec. Lamp Shade
391. M - Small Sugar Bowl w/Lid - ? Pattern
392. M - Rose Spray Goblet Compote - Heat Check
393. M - Soda Gold - Spittoon
394. M - 1/2 Pint & Quart, Golden Wedding, Whiskey Bottle Set
395. Blue - Contemporary Block Wine
396. Saph. - Contemporary ACGA God & Home Mug
397. Red - H.O.A.C.G.A. 1987 Whiskey Set
398. Red - Fenton 23" Tall Poppy Elec. GWTW Lamp
399. W - Contemporary Dahlia, 7 pc. Water Set
400. W - Signed IG Robin, 7 pc. Water Set
401. M - Signed IG Windmill Frosted, 7 pc. Water Set
402. M - Golfer Ash Tray w/Wood Stand - Neat
403. Clam - Floral & Optic ft'd. Cake Plate - Pretty
404. MMG - Floral & Optic Rose Bowl - Wear
405. M - Imperial Hobstar Cookie Jar w/Lid
406. M - N Fine Cut & Roses Rosebowl - Feet Chips
407. G - N Fine Cut & Roses Rosebowl - Feet Chips
408. P - N Lustre Flute Creamer
409. Blue Milk Glass - N Flute Sherbet
410. M - Small Propeller Compote
411. M - Rnd. 4-3/4" Panther Berry Bowl
412. M - Rnd. 4-3/4" Butterfly & Berry, Berry Bowl
413. B - Miniature Blackberry Compote - Bit Worn
414. P.O. - 6-3/4" Ruffle Single Flower Bowl
415. M - 5-1/2" O.E. Ruffle Basket w/Hat
416. M - Pineapple 6-3/4" Ruffled Bowl
417. M - Pineapple Creamer
418. Pale W - 9" Leaf Chain Ruffled Bowl
419. M - Fenton Iris Goblet
420. M - 7" Fish Scales & Beads Bowl
421. MMG - WM. 9" Carolina Dogwood Bowl - Worn
422. P.O. - WM. 8" Daisy Wreath Bowl - Worn
423. M - Banded Grape Mug
424. M - Orange Tree Mug, 3" Base
425. M - Orange Tree Mug, 3" Base
426. M - 8" Sailing Ship Plate
427. M - 2-1/2" Flower Frog
428. Approx. 1 Dozen Wire Bowl Holders