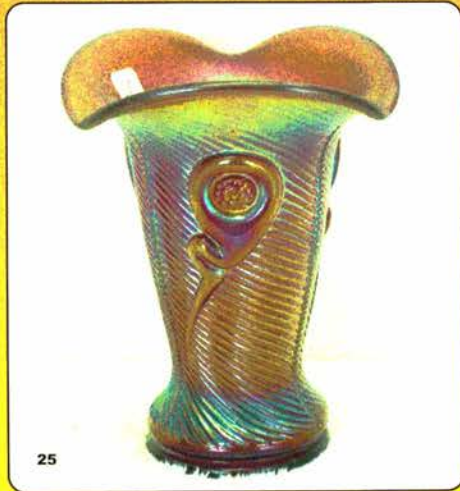


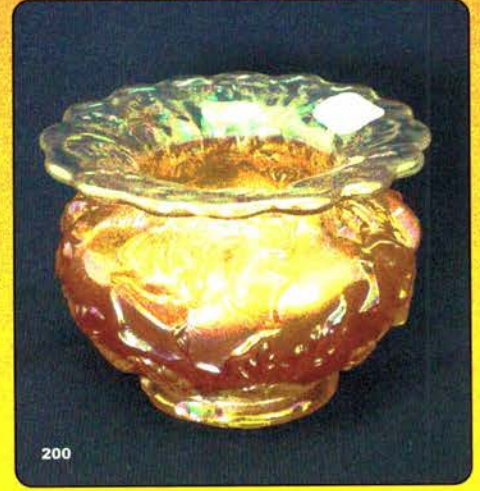
Carnival Glass

AUCTION

Saturday, October 21st, 2006 - 9:30 AM



Senior Activity Center
326 4th St NE
Mason City, Iowa



JIM & JAN SEECK

Seeck Auctions

P.O. Box 377
Mason City, Iowa 50402

641-424-1116



Carnival Glass Auction

Senior Activity Center – Mason City, Iowa

326 4th St NE



(From South: Take US Hwy 65 into Mason City and turn right or East on 4th ST NE, go 2 blocks)
 (From North: Take US Hwy 65 into Mason City and turn left or East on 4th ST NE, go 4 blocks)
 (This building is next to the Charlie Brown Daycare play yard – Carly went here for preschool!)

Preview: Friday, October 20th , 3 pm – 6 pm
NO BUYER'S PREMIUM

For Lots of Color Pictures Check our WEBSITE:
www.seeckauktion.com

* Please email us and we can put you on our Internet mailing list for auction updates and notices. (Please indicate Carnival Glass)

Lodging: Mason City: Comfort Inn – (641)423-4444; Country Inn & Suites – (641)423-1770; Super 8 – (641)423-8855; Holiday Inn – (641)423-1640; Days Inn – (641)424-0210; Clear Lake: AmericInn – (641)357-8954; Best Western Holiday Lodge (641)357-5253.

TERMS: Cash or Check, VISA and MasterCard accepted w/proper ID. **3% Clerking Fee** on all purchases except for payment of cash or check. Announcements made day of sale take precedence over any printed information.

Jim and Jan Seeck
641-424-1116

Seeck Auctions

EMAIL:
jimjan@seeckauktion.com

ABSENTEE BID POLICY

1. Write-in bids will be accepted by sending the numbers of the item(s) desired and the amount bid on each to:
Seeck Auctions, PO Box 377, Mason City, Iowa 50402.
2. You may call in your bids previous to the auction at (641)424-1116. (this is not live phone bidding)
3. You may **email** your bids to us: **jimjan@seeckauktion.com** Include the numbers of the item(s) you would like to bid on and amount bid on each, please include your telephone number.
4. There is a \$5 handling charge for each successful bid. Shipping and insurance charges are additional.
5. Bidders will be notified by phone/email if their bid(s) are successful. This will be done 1 - 3 days after the auction.
6. Please have all bids in by **Thurs., Oct 19th**. All bids (by mail, phone or **email**) after this date may not be carried out.
7. Please place bids in the following increments: \$1 to \$300 - \$5 increments \$300 up - \$25 increments.
8. **If you do not receive an item that sold for less than your bid, assume we cancelled your bid because the piece of glass had below average color, manufacture problem, damage or was not listed correctly.**
9. Auction results are posted on our website within 5 days of the auction (depending on drive time home from the sale.)

- | | |
|--|---|
| <p>___ 1. Milady cvd jar - marigold</p> <p>___ 2. Strutting Peacock cvd sugar & cvd creamer - amethyst</p> <p>___ 3. Central Trumpet 7" candlesticks - ice green</p> <p>___ 4. Lancaster #950 7 1/2" candlesticks - marigold</p> <p>___ 5. Heavy Vine 7" candlesticks - marigold - we believe these are quite rare, pretty</p> <p>___ 6. Peacock Tail ruffled hat - amethyst</p> <p>___ 7. Little Fishes ftd ruffled sauce - marigold</p> <p>___ 8. N's Scales & Greek Key dome ftd ruffled bowl - purple</p> <p>___ 9. Wreath of Roses ruffled compote - amethyst</p> <p>___ 10. Chrysanthemum chop plate - marigold - very scarce, has super stretchy irid., neat piece</p> <p>___ 11. Strawberry bon bon - vaseline w/marigold overlay</p> <p>___ 12. Strawberry bon bon - amber</p> <p>___ 13. Strawberry bon bon - marigold - has strawberry in bottom</p> <p>___ 14. Autumn Acorn ruffled bowl - blue</p> <p>___ 15. Leaf & Beads rose bowl - aqua opal - butterscotch, scarce</p> <p>___ 16. Leaf & Beads rose bowl - blue</p> <p>___ 17. Enameled Columbine water pitcher - marigold</p> <p>___ 17A. Enameled Forget-me-knot tumblers (4) - marigold - choice</p> <p>___ 18. Heart & Vine ruffled bowl - blue</p> <p>___ 19. Pinecone IC shaped 7" bowl - blue</p> | <p>___ 20. N's Corn vase w/plain base - green - very pretty & scarce</p> <p>___ 21. N's Corn vase w/stalk base - ice green - scarce</p> <p>___ 22. N's Corn vase w/stalk base - white</p> <p>___ 23. Panther ftd ruffled master berry bowl - marigold - chip on claw of foot</p> <p>___ 24. Butterfly & Berry 9" vase - marigold</p> <p>___ 25. Ribbed Tornado vase - amethyst - fantastic irid., a beauty, tri-cornered top, outstanding & rare!</p> <p>___ 26. N's Stippled Rays ruffled bowl - purple</p> <p>___ 27. Thistle 3 in 1 edge bowl - w/"Compliments of Harmonic Saengerbund Masquerade Ball February 7, 1910" paper label on bottom - green</p> <p>___ 28. Thistle 3 in 1 edge bowl - amethyst</p> <p>___ 29. Butterfly & Berry ftd master berry bowl - green - scarce color</p> <p>___ 30. Butterfly & Berry ftd master berry bowl - amethyst - scarce, pretty</p> <p>___ 31. Diamond Point bushel basket - marigold - rare, crack in handle</p> <p>___ 32. Grape & Cable hatpin holder - green - minor nicks on toe</p> <p>___ 33. Grape & Cable hatpin holders (2) - purple - choice</p> <p>___ 34. Raindrops 3 in 1 edge dome ftd bowl - peach opal - pretty</p> |
|--|---|

- ___ 35. Imperial Grape 11" ruffled bowl - purple - super pretty irid. & scarce
 ___ 36. Kittens cup & saucer - marigold
 ___ 37. Kittens ruffled bowl - marigold
 ___ 38. Kittens cereal bowl - marigold
 ___ 39. Kittens 4 sides up dish - marigold - chip on base
 ___ 40. **Paneled Dandelion tankard water pitcher - green - hard to find variation w/handle on seam, super pretty**
 ___ 41. Paneled Dandelion tumbler - green - super
 ___ 42. **Paneled Dandelion 7 pc. water set - purple**
 ___ 43. **M'burg Ohio Star tankard pitcher - crystal**
 ___ 44. **M'burg Ohio Star vases (2) - crystal - choice**
 ___ 45. **M'burg Ohio Star 4 pc. table set - crystal**
 ___ 46. **Cosmos & Cane square shaped whimsy bowl - white - super irid., a beauty**
 ___ 47. **Orange Tree 9 pc. round shaped punch set - blue - scarce**
 ___ 48. Two Flowers ftd IC shaped bowl - marigold
 ___ 49. Thin Panel crimped edge tri-cornered vase - peach opal
 ___ 50. **Rustic 21 1/2" funeral vase w/plunger base - green - fantastic irid., most would call this emerald, two no harm manufacture splits in base**
 ___ 51. Feathers 7" vase - marigold
 ___ 52. Blue tumblers including: Milady; Dugan Peacock at Fountains(6); Ten Mums; Floral & Grape: Grape & Gothic Arches; Enamelled Cherries(3) - choice
 ___ 53. Octagon small size water pitcher - marigold
 ___ 54. Autumn Acorn 3 in 1 edge bowl - marigold
 ___ 55. **N's Flute 13" funeral vases(2) - green - very rare, nice, 4 3/4" bases, choice**
 ___ 56. Pearly Dots large size rose bowl - green
 ___ 57. Pearly Dots small size rose bowl - green
 ___ 58. **Harvest Flower tankard water pitcher - marigold - super pretty, crack around handle**
 ___ 59. Harvest Flower tumbler - marigold
 ___ 60. **Star & Fan 4 pc. cordial set including bottle w/stopper, tray, & 2 cordials - aqua blue - very rare color, pretty**
 ___ 61. **Star & Fan 5 pc. cordial set including bottle w/stopper, tray & 3 cordials - marigold**
 ___ 62. **Inverted Strawberry large size compote - amethyst - very scarce & nice**
 ___ 63. Dragon & Lotus ruffled bowl - blue
 ___ 64. Dragon & Lotus ruffled bowl - marigold
 ___ 65. **Good Luck ruffled bowl w/ribbed back - lavender - very scarce color, pretty**
 ___ 66. **Good Luck ruffled bowls w/ribbed backs(2) - purple - both different, both nice - choice**
 ___ 67. **Good Luck ruffled bowl w/ribbed back - blue - nice**
 ___ 68. **Good Luck ruffled bowl w/ribbed back - marigold - lots of pink & yellow irid.**
 ___ 69. Nugget creamer - blue
 ___ 70. **M'burg Whirling Leaves crimped edge square shaped bowl - amethyst - radium, pretty & rare, neat piece**
 ___ 71. Estate perfume - smoke
 ___ 72. Estate vase - smoke - souvenir of Silk City, Beldin, Mich.
 ___ 73. Marigold tumblers including: Floral & Grape; Blackberry Block; Acorn Burrs; Coin Dot; Grape & Cable; Lattice & Daisy; Hobstar Band; N's Waterlily; Cosmos & Cane - choice
 ___ 74. Autumn Acorn IC shaped bowl - green
 ___ 75. **Acorn Burrs 8 pc. punch set - marigold - scarce set, highly desirable, nice**
 ___ 76. Circle Scroll creamer - marigold
 ___ 77. Australian Butterfly Bush round compote - purple
 ___ 78. **Australian Kangaroo master ruffled bowl - purple - pretty**
 ___ 79. Australian Butterfly Bush & Bells round compote - marigold
 ___ 80. **Blackberry Block tankard water pitcher - green - extremely rare & highly desirable**
 ___ 81. Circle Scroll 4" hddl sauce - amethyst
 ___ 82. Circle Scroll 4" hddl sauce - marigold
 ___ 83. Orange Tree hatpin holder - blue - chip on foot
 ___ 84. Wishbone ftd ruffled bowl - marigold
 ___ 85. M'burg Sunflower pin tray - amethyst - large chip on back of petal
 ___ 86. M'burg Sunflower pin tray - green - minor nick on back of petal
 ___ 87. Blackberry Block tumbler - green
 ___ 88. Cherry Chain 10" ruffled bowl - amethyst
 ___ 89. Windmill round sauce - purple
 ___ 90. **Holly 9" plate - amethyst - scarce & pretty**
 ___ 91. **Holly 9" plate - violet blue - odd color, neat**
 ___ 92. Holly 9" plate - blue - pretty
 ___ 93. Holly 9" plate - marigold
 ___ 94. Daisy row boat - marigold - chip on top edge
 ___ 95. Pansy low ruffled bowl or plate - lavender - super pretty
 ___ 96. Pansy ruffled bowls (2) - purple - choice
 ___ 97. Fenton Peacock at Urn ruffled compote - aqua - scarce color
 ___ 98. Fenton Peacock at Urn ruffled compote - blue
 ___ 99. Fenton Peacock at Urn ruffled compote - lime green w/marigold overlay
 ___ 100. **Peacocks ruffled bowl w/ribbed back - ice green - super pretty, scarce**
 ___ 101. **Peacocks ruffled bowl w/ribbed back - marigold - lots of pink & yellow irid., a beauty**
 ___ 102. Peacocks ruffled bowl w/ribbed back - blue opal - not carnival
 ___ 103. Blackberry Open Edge 2 sides up dish - blue - has excess glass on half of the dish filling in the open edge, different
 ___ 104. Blackberry Open Edge 2 sides up dish - marigold
 ___ 105. Tornado large size vase - purple - chip on base
 ___ 106. Tornado large size vase - marigold - chip on base
 ___ 107. Grape & Cable turned in centerpiece bowl - marigold - very pretty, quite scarce
 ___ 108. Peacock at Urn IC sauces(2) - purple - choice
 ___ 109. Brocaded Acorn 6" hddl bowl & under plate - ice blue
 ___ 110. **Orange Tree IC shaped bowl - green - super pretty!**
 ___ 111. Holly 6 ruffled bowl - white
 ___ 112. Holly 8 ruffled bowl - blue
 ___ 113. Holly 8 ruffled bowl - amethyst
 ___ 114. Holly 8 ruffled bowl - marigold
 ___ 115. **Dugan's Cherries 10" ruffled bowl - purple - electric & super beautiful**
 ___ 116. Dugan's Cherries 10" ruffled bowl - peach opal - pretty
 ___ 117. Wild Rose ftd open edge bowl - blue - nice, lg chip & crack
 ___ 118. Wild Rose ftd open edge bowl - amethyst
 ___ 119. Luster Rose 4 pc. table set - marigold - nice
 ___ 120. **Grape Freize ftd IC shaped bowl - irid. custard - very rare, highly sought after**
 ___ 121. Peacock Tail 10" ruffled bowl - marigold
 ___ 122. Drapery 8" vases (2) - white - choice
 ___ 123. Three Fruits PCE bowl w/plain back - amethyst
 ___ 124. Vintage 3 in 1 edge bowl - green
 ___ 125. **Good Luck 9" plate w/BW back - purple - very nice, has nick on top cleat**
 ___ 126. Grape & Cable hatpin holder - green - pretty, cracked
 ___ 127. **Scroll Embossed 9" plate - purple - fantastic!**
 ___ 128. Strawberry card tray shaped bon bon - marigold
 ___ 129. Stork & Rushes mug - amethyst

- ___ 130. **Peacock & Grape 9" plate - marigold - very pretty, highly desirable**
- ___ 131. Tree Trunk 10" vase - green - super pretty
- ___ 132. Tree Trunk 9" vase - purple
- ___ 133. Tree Trunk 10" vase - blue opal - not carnival
- ___ 134. Singing Birds creamer - green - if you need it, quite scarce
- ___ 135. **Fluffy Peacock water pitcher - green - very pretty, very scarce**
- ___ 136. Thistle 3 in 1 edge bowl - green
- ___ 137. **Fruits & Flowers 10" PCE bowl w/BW back - purple - very rare bowl, nice**
- ___ 138. Waterlily ftd ruffled sauce - blue
- ___ 139. Purple tumblers including: Raspberry; Dandelion; Oriental Poppy; Floral & Grape; N's Peacock at the Fountains(3) - choice
- ___ 140. **Little Fishes ftd ruffled master berry bowl - blue - scarce**
- ___ 141. **Little Fishes ftd ruffled master berry bowl - marigold - very pretty**
- ___ 142. Captive Rose 6 ruffled bowl - blue
- ___ 143. Grape & Cable powder jar - purple
- ___ 144. 1982 ICGA Frolicking Bears spittoon - red
- ___ 145. Milady tankard water pitcher - amethyst - rare, crack by handle
- ___ 146. Milady tankard water pitcher - marigold - crack by handle
- ___ 147. Sailboats 4 sides up sauce - marigold - unusual shape
- ___ 148. **Stippled Grape & Cable 10" ruffled bowl - blue - very rare, highly desirable**
- ___ 149. Question Mark crimped edge compote - peach opal
- ___ 150. **Peacock at the Fountain fruit bowl - purple - super pretty, a real beauty, rare & desirable**
- ___ 151. **Peacock at the Fountain fruit bowl - marigold - very nice**
- ___ 152. Stretch glass wide panel round 10" bowl - red
- ___ 153. Stag & Holly large size ftd ruffled bowl - blue - scarce
- ___ 154. Green tumblers including: Tiger Lily(2); Field Flower; Luster Rose - choice
- ___ 155. **Australian Shrike large ruffled bowl - purple - pretty**
- ___ 156. **Australian Kingfisher large ruffled bowl - purple**
- ___ 157. **Australian Kingfisher large ruffled bowl - marigold**
- ___ 158. Grape Leaves ruffled bowl - marigold - pretty
- ___ 159. Cherry Chain ruffled sauce - blue
- ___ 160. **Peacock at the Fountain water pitcher - purple - very pretty, scarce**
- ___ 161. Peacock at the Fountain tumbler - light amethyst to lavender - very pretty
- ___ 162. Enameled Chrysanthemum bulbous water pitcher - marigold, scarce
- ___ 163. Waterlily ftd ruffled master berry bowl - marigold
- ___ 164. Luster Rose fernery - marigold
- ___ 165. **Peacocks PCE bowl w/ribbed back - blue - has electric highlights**
- ___ 166. Peacocks PCE bowl w/ribbed back - marigold - chip on edge
- ___ 167. Beaded Basketweave hldd basket - marigold
- ___ 168. Stream of Hearts ruffled compote - marigold
- ___ 169. Fanciful 9" plate - marigold
- ___ 170. **N's Thin Rib 14" mid-size vase - purple - scarce & desirable**
- ___ 171. N's Bushel Basket - sapphire - very rare color, large burst in base
- ___ 172. **N's Bushel Basket - aqua opal - butterscotch & nice**
- ___ 173. N's Bushel Basket - ice green
- ___ 174. N's Bushel Basket - white - nice
- ___ 175. N's Bushel Baskets(2) - blue - choice
- ___ 176. N's Bushel Basket - marigold - nice
- ___ 177. N's Bushel Basket - blue opal - not carnival
- ___ 178. N's Bushel Basket - custard w/nutmeg
- ___ 179. N's Bushel Basket - black amethyst - not irid.
- ___ 180. Hearts & Flowers 9" plate - marigold - very scarce, chip on one point
- ___ 181. Thistle 6 ruffled bowl - blue
- ___ 182. Nippon PCE bowl w/ribbed back - ice blue
- ___ 183. Marigold tumblers including: Imperial Grape; Oriental Poppy(2); Swirl(2); Octagon(4); Fashion; Four-Seventy-Four; Ten Mums; Floral & Grape; Heavy Iris - choice
- ___ 184. Windmill ruffled bowl - smoke - pretty
- ___ 185. **M'burg Feather & Heart water pitcher - marigold - very scarce, highly desirable, even color**
- ___ 186. Rose Garden 9" round bowl - blue
- ___ 187. Ski Star large size ruffled bowl - peach opal
- ___ 188. M'burg Grape Wreath 10" 3 in 1 edge bowl - green - satin, silvery
- ___ 189. Coin Dot 7" ruffled bowl - amethyst
- ___ 190. **Broken Arches 8 pc. punch set - marigold - very nice, dark, probably rarer than the purple**
- ___ 191. Blackberry Bramble ruffled compote - marigold
- ___ 192. Garland rose bowl - blue
- ___ 193. Imperial Grape water bottle - purple
- ___ 194. Imperial Grape water bottle - smoke - marked IG
- ___ 195. **Grape & Cable hatpin holder - green - nice**
- ___ 196. Grape & Cable hatpin holder - purple
- ___ 197. Rustic 13" mid-size vase - green
- ___ 198. Rustic 16 1/2" mid-size vase - blue
- ___ 199. Scroll Embossed ruffled bowl - purple, has plain back
- ___ 200. **Wreath of Roses whimsey spittoon - marigold - has two chips on collar base that are irid. over, rare, rare, rare, has pontal mark on base**
- ___ 201. Wreath of Roses rose bowl - marigold
- ___ 202. Target 5 1/2" squatty vase - purple - short & fat, neat
- ___ 203. Heavy Grape 6" bowl - purple
- ___ 204. Grand Thistle tumbler - blue
- ___ 205. **Fenton's Peacock at Urn 9" plate - white - very pretty, a nice one**
- ___ 206. N's Stippled Rays PCE bowl - purple
- ___ 207. **Zipper Stitch 6 pc. cordial set including bottle w/stopper, under plate & 4 cordials - marigold**
- ___ 208. Basketweave Open Edge small size basket - aqua
- ___ 209. Basketweave Open Edge small size basket - blue
- ___ 210. **Hearts & Flowers ruffled compote - blue - super pretty**
- ___ 211. Hearts & Flowers ruffled compote - aqua opal - butterscotch, pretty, minor nick on base
- ___ 212. Hearts & Flowers ruffled compote - white
- ___ 213. Poinsettia milk pitcher - marigold
- ___ 214. Single Flower Framed crimped edge handgrip plate - peach opal
- ___ 215. **M'burg Rosalind 9" ruffled bowl - amethyst - satin & pretty, rare size**
- ___ 216. Blue tumblers including: Paneled Dandelion; Apple Tree; Blackberry Block; Butterfly & Berry - choice
- ___ 217. Louisa rose bowl - amethyst
- ___ 218. **Lions ruffled bowl - blue - pretty**
- ___ 219. Strawberry PCE bowl w/plain back - lavender
- ___ 220. **Enameled Forget-me-knot 6 pc. tankard water set - blue - rare set**
- ___ 221. Single Flower crimped edge bowl - peach opal
- ___ 222. Heavy Grape chop plate - green - scarce
- ___ 223. Heavy Grape chop plate - marigold
- ___ 224. Grape Delight rose bowl - purple
- ___ 225. **Twin Gators hatpin - purple - extremely rare hatpin, pretty**
- ___ 226. **King Spider hatpin - purple - rare & nice**
- ___ 227. **Beetle hatpin - purple - pretty, rare**

- ___ 228. **Strawberry hatpin - amber - scarce**
 ___ 229. **Strawberry hatpin - green**
 ___ 230. Uniridized hatpins including: Spider; Bee & Honeycomb - choice
 ___ 231. Rooster hatpins including: Amber; Dark Blue; Light Blue; Green; Lavender; Light Blue w/painted background; Red w/painted background - choice
 ___ 232. Hatpins including: Dimples & Brilliance; Basketflower; Butler's Mirror; Six Plums; Coolie Hat; Big Butterfly; Butterflies; Tufted Throw Pillow; Top of the Morning; Throw Pillow; Triad; Flying Bat - choice
 ___ 233. Pastel Swan salt - purple
 ___ 234. Pastel Swan salt - marigold
 ___ 235. **Butterfly & Fern water pitcher - green - very nice, scarce**
 ___ 236. Butterfly & Fern tumbler - green - pretty
 ___ 237. **Butterfly & Fern water pitcher - blue - scarce**
 ___ 238. Butterfly & Fern tumbler - blue
 ___ 239. Acanthus chop plate - marigold - chip on edge
 ___ 240. Basketweave Open Edge 2 sides up basket - green - nice
 ___ 241. Basketweave Open Edge two sides up basket - vaseline - chip on back edge
 ___ 242. Imperial Grape 9" deep round bowl - purple - pretty
 ___ 243. Blackberry Spray ruffled hat - lime green w/marigold overlay
 ___ 244. Fruits & Flowers ruffled sauces(6) - purple - choice
 ___ 245. **Bouquet 7 pc. water set - blue - pretty, has nick in pattern**
 ___ 246. Butterfly & Berry 9" vase - marigold - heat check in base
 ___ 247. Green tumblers including: Butterfly & Fern; Raspberry - choice
 ___ 248. Stippled Three Fruits ruffled bowl w/ribbed back - purple - chip on edge
 ___ 249. Luster Rose breakfast creamer - purple
 ___ 250. **M'burg Trout & Fly IC shaped bowl - amethyst - satin & scarce**
 ___ 251. Ribbon Tie ruffled bowl - green
 ___ 252. **Australian Kangaroo large ruffled bowl - purple**
 ___ 253. Australian Kangaroo ruffled sauce - purple
 ___ 254. Australian Kiwi ruffled sauce - marigold
 ___ 255. Orange Tree & Scroll tankard water pitcher - marigold - fantastic irid.! a real beauty, crack on base
 ___ 256. Large ftd shell - amethyst
 ___ 257. Nautilus whimsey sugar - purple
 ___ 258. Egyptian Queen 7" vase - marigold - cracked
 ___ 259. **Classic Arts rose bowl w/wire flower frog - marigold**
 ___ 260. Puzzle bon bon - purple - super pretty
 ___ 261. **Enameled Lotus bulbous 5 pc. water set - ice green - very scarce**
 ___ 262. Raspberry ruffled compote - green
 ___ 263. Blackberry Open Edge ruffled baskets(2) - marigold - choice
 ___ 264. Two Flowers ftd ruffled master berry bowl - marigold
 ___ 265. **Brooklyn Bridge 6 ruffled bowl - marigold - scarce**
 ___ 266. Butterflies card tray shaped bon bon - amethyst
 ___ 267. Scroll Embossed 9" plate - green
 ___ 268. Horse Medallion JIP ftd bowl - amber - scarce color
 ___ 269. Peacock & Grape ruffled bowl - marigold
 ___ 270. **Tree Trunk 13" mid-size vase w/plunger base - green - very rare vase, highly desirable**
 ___ 271. Purple tumblers including: Oriental Poppy & Grapevine Lattice - choice
 ___ 272. **Drapery candy dish - aqua - very rare color, pretty**
 ___ 273. Diamond Points 12" vase - white - scarce
 ___ 274. Diamond Points 10" vase - marigold - pretty, chip on base
 ___ 275. **M'burg Peacock 7 pc. berry set - amethyst - radium & super, a great set**
 ___ 276. Two Flowers ftd IC shaped bowl - marigold
 ___ 277. Stippled Good Luck ruffled bowl w/ribbed back - blue - scarce & nice
 ___ 278. File 4" whimsey ruffled vase - marigold
 ___ 279. File creamer, cvd sugar & spooner - marigold - choice
 ___ 280. Question Mark ftd plate - purple - very scarce, nice
 ___ 281. Four Pillars Howard Furniture Co. adv. 11" vase - green - roughness on top edge
 ___ 282. Four Pillars 10" vase - white opal - not carnival
 ___ 283. Cherry Chain 10" ruffled bowl - blue - pretty
 ___ 284. Wreath of Roses ruffled compote - blue
 ___ 285. **Grape & Cable master 6 pc. punch set - marigold - rare, has two flutes broken off**
 ___ 286. N's Smooth Rays bon bon - purple
 ___ 287. Fruits & Flowers bon bon - green
 ___ 288. Fruits & Flowers bon bon - blue
 ___ 289. Fruits & Flowers bon bon - purple
 ___ 290. Buzz Saw small size cruet w/stopper - green - repair on spout
 ___ 291. Orange Tree mug - sapphire - polished chip on base
 ___ 292. Orange Tree mugs (2) - blue - choice
 ___ 293. Orange Tree mug - marigold
 ___ 294. Sailboats wine glass - blue - scarce color
 ___ 295. Dragon & Lotus ruffled bowl - amberina w/red slag - chip on edge
 ___ 296. Purple tumblers including: Raspberry & Grapevine Lattice - choice
 ___ 297. Memphis master berry bowl - light lavender
 ___ 298. Imperial Flute #3939 ruffled 7 pc. punch set - green - scarce, chip on top edge
 ___ 299. Imperial Flute #3939 ruffled 4 pc. punch set - marigold
 ___ 300. **Little Fishes ftd IC shaped bowl - blue - very pretty irid.**
 ___ 301. Coin Dot 3 in 1 edge 9" bowl in brides basket holder - green
 ___ 302. Corinth JIP 9" vase - blue opal - scarce color
 ___ 303. Corinth 9 1/2" JIP vase - aqua
 ___ 304. Corinth JIP 9" vase - green
 ___ 305. **Basketweave Open Edge lg size IC shaped bowl - ice green - scarce**
 ___ 306. Butterfly & Berry ftd sauce - amethyst
 ___ 307. Butterfly & Berry ftd sauce - green
 ___ 308. **Paneled Holly sugar bowl - green - extremely rare piece, one of just a few known**
 ___ 309. Heavy Iris JIP whimsey hat - marigold - scarce
 ___ 310. Mikado ruffled compote - marigold - chip on base
 ___ 311. Blackberry Bramble ruffled compote - green
 ___ 312. Peacocks 9" plate w/ribbed back - ice green - chipped point
 ___ 313. M'burg Holly Whirl ruffled bowl - amethyst - satin
 ___ 314. Garland rose bowl - blue
 ___ 315. **Stippled Three Fruits 9" plate - marigold - dark & super, a real beauty**
 ___ 316. Stippled Three Fruits 9" plate - marigold - lacks irid.
 ___ 317. Dragon & Lotus IC shaped bowl - blue - silvery
 ___ 318. **Fruits & Flowers 7" handgrip plate - green - scarce**
 ___ 319. Big Basketweave hdd basket - marigold
 ___ 320. **Orange Tree ruffled bowl - red - very rare bowl, highly desirable**
 ___ 321. Heavy Grape hdd nappy - aqua - very rare color for this piece
 ___ 322. Four Pillars 6" squatty vase - marigold - neat shape
 ___ 323. Grape & Cable powder jar - purple
 ___ 324. M'burg Whirling Leaves ruffled bowl - amethyst - radium
 ___ 325. Dugan Cherries IC shaped bowl - purple - scarce, electric highlights
 ___ 326. Diving Dolphins footed bowl - amethyst
 ___ 327. M'burg Primrose ruffled bowl - marigold - radium
 ___ 328. **Hearts & Flowers ruffled bowl - ice blue - nice**
 ___ 329. Plume Panels 11" vase - marigold

- ___ 330. **Australian Butterfly Bush & Waratah large ruffled compote - purple**
- ___ 331. **Australian Shrike large ruffled bowl - purple - pretty**
- ___ 332. Australian Shrike large ruffled bowl - marigold - nice
- ___ 333. Australian Swan ruffled sauce - purple - pretty
- ___ 334. Australian Emu ruffled sauce - marigold
- ___ 335. **Peacock at the Fountain 4 pc table set - marigold - nice set**
- ___ 336. Ripple 8" vase w/2 3/8" base - purple - pretty
- ___ 337. **Little Barrel - smoke - nice, scarce**
- ___ 338. **Little Barrel - green - scarce**
- ___ 339. **Little Barrel - marigold - dark & nice**
- ___ 340. Diamond & Sunburst 5 pc. wine set - purple - repaired stopper
- ___ 341. Diamond & Sunburst 7 pc. wine set - marigold
- ___ 342. Vintage 7" round bowl - blue
- ___ 343. Chrysanthemum ruffled bowl - amethyst - repaired open bubble on base
- ___ 344. Fine Rib 10" vase - green
- ___ 345. Wine & Roses cider pitcher - marigold - pretty, chip on top edge
- ___ 346. Wine & Roses wine - marigold
- ___ 347. Vintage 7" plate - green
- ___ 348. Purple tumblers including: Heavy Iris; Dandelion - choice
- ___ 349. Memphis punch bowl base - ice green - absolutely incredible, if you have the top. Wow!
- ___ 350. **Orange Tree Orchard water pitcher - blue - scarce**
- ___ 351. Kittens 2 sides up dishes(2) - marigold - choice
- ___ 352. **Maple Leaf 4 pc. table set - purple - rare color**
- ___ 353. Wishbone & Spades 6" plate - purple - scarce
- ___ 354. Poppy pickle dish - blue - chip on base
- ___ 355. **Grape & Cable lg size fruit bowl - purple - super pretty, rare**
- ___ 356. Orange Tree 3 in 1 edge bowl - green - scarce shape in this color
- ___ 357. Orange Tree hatpin holder - blue - nice
- ___ 358. Orange hatpin holder - marigold
- ___ 359. N's Thin Rib 11" vase - purple - nice
- ___ 360. Four Flowers 9" plate - teal green - chip on back
- ___ 361. Ribbon Tie 3 in 1 edge bowl - amethyst
- ___ 362. Scroll Embossed 8" round bowl - emerald - beautiful
- ___ 363. Crackle car vases (2) in metal & marble holder - marigold
- ___ 364. Basketweave Open Edge square shaped basket - violet slag
- ___ 365. **Peacocks 9" plate w/ribbed back - white - pretty**
- ___ 366. Pulled Loop 11" vase - blue - scarce color
- ___ 367. Fenton Peacock at Urn IC shaped bowl - marigold
- ___ 368. Grape & Cable hatpin holder - purple - chip on toe
- ___ 369. Double Stemmed Rose dome ftd bowl - amethyst
- ___ 370. Stag & Holly spt ftd ruffled bowl - green - super pretty, couple minor nicks on feet
- ___ 371. Luster Rose ftd 8" bowl - amethyst - has pretty lavender irid.
- ___ 372. Orange Tree creamer - blue
- ___ 373. **Poppy Pickle dish - blue - pretty**
- ___ 374. M'burg Holly Sprig bon bon - green - radium
- ___ 375. **N's Town Pump - purple - very scarce item, minor nick on end of handle**
- ___ 376. Captive Rose 3 in 1 edge bowl - green
- ___ 377. Grape & Cable Variant 9" plate w/BW back - marigold
- ___ 378. **Floral & Grape water pitcher - purple**
- ___ 379. Floral & Grape tumbler - purple
- ___ 380. Greek Key water pitcher - green - fabulous irid. on this rare piece, has 4" crack in center of body
- ___ 381. Inverted Strawberry 9" ruffled bowl - green - scarce size
- ___ 382. Kittens cup - blue - nick on base
- ___ 383. **Kittens toothpick - blue - nice**
- ___ 384. M'burg Peacock Tail Variant ruffled compote - amethyst - radium
- ___ 385. **Star & Fan 9 pc. liquor set includes decanter w/stopper, under plate & 7 shot glasses - marigold - unusual set**
- ___ 386. Peacock & Grape spt ftd IC shaped bowl - green
- ___ 387. Basketweave Open Edge JIP shaped basket - red - chip on edge
- ___ 388. Estate perfume - smoke
- ___ 389. Octagon decanter bottle - green - rare color
- ___ 389A. Diamond & Sunburst stopper - smoke
- ___ 390. **Greek Key 9" plate w/BW back - purple - very rare plate, highly desirable**
- ___ 391. Horse Medallion ruffled bowl - marigold
- ___ 392. Holly 3 in 1 edge bowl - blue - pretty
- ___ 393. **Good Luck PCE bowl w/ribbed back - marigold - nice**
- ___ 394. Three Fruits 9" plate w/BW back - marigold
- ___ 395. Grape & Cable dresser tray - purple - chip on base
- ___ 396. Fashion 8 pc. punch set - marigold - pretty
- ___ 397. Fashion punch bowl & base - marigold - base has been flattened out somewhat
- ___ 398. Holly 2 sides up hatshape - red
- ___ 399. Blackberry Open Edge ruffled basket - blue
- ___ 400. **Tree Trunk 12" mid-size vase - green - very scarce**
- ___ 401. **Tree Trunk 12" mid-size vase - purple - scarce**
- ___ 402. Open Rose rose bowl - amber - pretty
- ___ 403. **Stippled Basket of Roses bon bon - purple - scarce bon bon & nice**
- ___ 404. Poppy Pickle dish - blue - nick on base
- ___ 405. Orange Tree 6 pc. water set - blue - nick on top of pitcher & typical nicks on toes
- ___ 406. Four Flowers 6" plate - peach opal
- ___ 407. Fenton's Good Luck/Heart & Horseshoe ruffled bowl - marigold - crack across base, rare
- ___ 408. Windmill dresser tray - marigold - pretty, scarce
- ___ 409. Pansy dresser tray - marigold - scarce
- ___ 410. **Field Flower water pitcher - amber - scarce & nice**
- ___ 411. Blackberry Spray crimped edge flattened out hatshape - aqua - neat shape
- ___ 412. N's Bushel Basket - amethyst - very pretty, some may call this lavender
- ___ 413. M'burg Grape Wreath 7" ruffled bowl - green - radium, pretty
- ___ 414. **Heavy Grape 8" plate - purple - super, a real beauty**
- ___ 415. Fashion 7 pc. water set - marigold - neat set
- ___ 416. Fenton's Peacock at Urn ruffled bowl - blue
- ___ 417. N's Peacock at the Fountain spooner - marigold
- ___ 418. Greek Key ruffled bowl w/BW back - purple
- ___ 419. Fenton's Grape & Cable spt ftd 9" plate - marigold - dark & pretty
- ___ 420. **Five Hearts deep round dome ftd bowl - marigold - rare pattern, neat**
- ___ 421. Fruits & Flowers bon bon - blue
- ___ 422. Stippled Fruits & Flowers bon bon - marigold - pretty
- ___ 423. Orange Tree loving cup - green - nicks on base of handle
- ___ 424. Brocaded Acorn large centerpiece bowl - ice blue
- ___ 425. Two Flowers spt ftd rose bowl - purple - rare color, minor pinpoint on foot
- ___ 426. **Persian Medallion bon bon - aqua - scarce color**
- ___ 427. Golden Wedding bottle - marigold - partial paper label
- ___ 428. Birds & Cherries ruffled compote - blue - mold roughness on top edge
- ___ 429. M'burg Holly Sprig w/54th Anniv. Isaac Benesch & Sons adv. - marigold
- ___ 430. Nippon PCE bowl w/ribbed back - purple - scarce
- ___ 431. Miniature Morning Glory 6 1/2" vase - green

- ___ 432. Holly 3 in 1 edge bowl - amethyst
 ___ 433. Ripple 7" squatty vase - purple - has 3 7/8" base
 ___ 434. Blackberry Open Edge ruffled hat - amethyst
 ___ **435. M'burg Trout & Fly IC shaped bowl - amethyst - satin, scarce**
 ___ 436. Heavy Iris & Fashion tumblers - marigold - choice
 ___ 437. Imperial Grape hdd basket - marigold
 ___ 438. Pinecone 6" plate - marigold - light irid.
 ___ 439. Fenton's Peacock at Urn goblet shaped compote - marigold
 ___ 440. Robin 6 pc. water set - marigold
 ___ 441. Windflower 9" plate - blue
 ___ 442. Grape & Cable Variant ruffled bowl w/plain back - green
 ___ 443. Luster & Clear hatshape - green
 ___ 444. Scotch Thistle crimped edge ruffled compote - green
 ___ 445. Stag & Holly giant rose bowl - marigold
 ___ 446. Estate vase w/"Souvenir of Durham" - smoke
 ___ 447. Pearly Dots 9" plate - marigold
 ___ 448. Four-Seventy-Four milk pitcher - green
 ___ 449. Ripple 5" squatty vase - marigold - 2 1/2" base
 ___ 450. Grape & Cable water pitcher - purple
 ___ 451. Fenton's Three Fruits 9" plate - marigold
 ___ 452. Fine Cut Flower ruffled compote - marigold
 ___ **453. Leaf & Beads rose bowl - aqua opal**
 ___ 454. Wreathed Cherry banana boat sauce - purple
 ___ **455. Corn bottle - smoke - minor nick on top edge**
 ___ **456. Corn bottle - marigold**
 ___ **457. Corn bottle - green**
 ___ 458. Orange Tree mugs(4) - marigold - choice
 ___ 459. Horse Medallion ruffled bowl - marigold
 ___ **460. M'burg Peacock 6" plate - amethyst - minor rub on urn, pretty & rare**
 ___ 461. Floral & Grape water pitcher - purple
 ___ 462. Floral & Grape tumbler - purple
 ___ 463. Fisherman's mug - marigold
 ___ 464. Dugan's Vintage dome ftd ruffled bowl - green
 ___ **465. Daisy Webb ruffled hat - marigold - very pretty**
 ___ 466. Feather Stitch deep round bowl - blue - nick on edge
 ___ 467. 1909 Louisville, KY Shriner's champagne - clear
 ___ 468. 1905 Niagara Falls vaseline shot glass - not carnival
 ___ 469. Buzz Saw lg size cruet - marigold - has cork stopper
 ___ 470. Persian Medallion 6" plate - blue
 ___ 471. Three Fruits spt ftd ruffled bowl - marigold
 ___ 472. Punch bowl bases(3) - marigold - choice
 ___ 473. Contemporary pcs.(6) - red - choice
 ___ 474. Contemporary pcs.(4) - choice
 ___ **475. Good Luck PCE bowl w/ribbed back - marigold - pretty**
 ___ 476. Singing Birds mug - blue
 ___ 477. Singing Birds mug - amethyst
 ___ 478. Singing Birds mug - marigold
 ___ 479. Fine Rib 11 1/2" vase - blue
 ___ 480. Orange Tree 4 pc. table set - marigold - scarce set
 ___ 481. Briar Patch square shaped hatshape - blue - scarce
 ___ 482. Hearts & Flowers 9" plate w/ribbed back - marigold - minor pinpoint on one point
 ___ 483. Floral & Grape tumbler - amethyst
 ___ 484. Little Barrel - green
 ___ 485. Daisy & Drape vase - white
 ___ 486. Stippled Rays card tray shaped bon bon - olive green
 ___ 487. Hobnail perfumes, one w/o stopper, one w/chip on hob - choice
 ___ 488. Lined Lattice 10" vase - white
 ___ 489. Nippon ruffled bowl w/BW back - purple - chips in pattern
 ___ 490. Daisy & Plume compote - purple
 ___ **491. N's Corn vase - ice green - scarce**
 ___ 492. Beaded Shell mug - blue - scarce color
 ___ 493. Beaded Shell tumbler - amethyst
 ___ 494. Daisy Row Boat - marigold
 ___ **495. Scroll Embossed miniature ruffled compote - purple - super & scarce**
 ___ 496. Daisy Squares crimped edge compote - marigold - scarce
 ___ 497. Horse Medallion 7" plate - custard w/red stain - not carnival
 ___ 498. Nugget creamer - blue
 ___ 499. Peacock & Grape IC shaped bowl - marigold
 ___ **500. Stippled Peacocks 9" plate w/ribbed back - blue - super pretty, very bright & nice**
 ___ 501. Stretch glass ruffled bowl - red
 ___ 502. Rustic 10" vase - blue - pretty
 ___ 503. Stippled Robin mug - powder blue w/marigold overlay - unusual color
 ___ 504. Open Rose ruffled bowl - smoke
 ___ 505. Smooth Panels 14" vase - marigold
 ___ 506. Grape Arbor hatshape - blue - scarce
 ___ 507. Diamond Point 10" vase - purple
 ___ **508. Concord ruffled bowl - amethyst - super pretty**
 ___ 509. Fenton's Peacock at Urn ruffled compote - marigold
 ___ **510. Drapery rose bowl - aqua opal - nice**
 ___ 511. Leaf Chain 7" ruffled sauce - powder blue
 ___ 512. Ripple 10" vase - purple - pretty, has 3 3/8" base
 ___ 513. Grape & Cable powder jar bottom - camphor glass - non irid.
 ___ 514. 1981 HOACGA Grape & Cable lampshade & 2 metal holders - red
 ___ **515. Peacock at the Fountain 7 pc. punch set - marigold - dark & super, rare & desirable**
 ___ 516. Scales banana boat shaped dish - peach opal
 ___ 517. Ski Star dome ftd crimped edge banana boat shaped dish - peach opal
 ___ 518. Basketweave Open Edge 2 sides up basket - red
 ___ 519. April Showers 11" vase - blue
 ___ 520. Acanthus chop plate - marigold - scarce & nice
 ___ 521. Fine Cut & Roses candy dish - horehound - minor nick on foot
 ___ 522. Wild Blackberry ruffled bowl - marigold - scarce
 ___ 523. M'burg Holly Spring hdd bon bon - green - radium
 ___ 524. Lules Argentina 8" plate - amber
 ___ 525. Stag & Holly lg size deep ruffled bowl - marigold - chip on base
 ___ 526. Basketweave Open Edge ruffled basket - blue
 ___ 527. Inverted Feather cracker jar - green - scarce
 ___ 528. Thistle banana boat - green - lacks irid.
 ___ 529. Grape & Cable tumbler - purple
 ___ **530. Hearts & Flowers ruffled bowl w/ribbed back - aqua - very pretty marigold overlay, extremely rare & nice**
 ___ 531. Pastel Swan salt - ice green
 ___ 532. Imperial Grape wine bottle w/new stopper - purple
 ___ 533. Imperial Grape wine - purple
 ___ 534. Golden Grapes ruffled bowl - marigold
 ___ 535. Pansy hdd nappy - smoke - marked IG
 ___ 536. Sugar bowl - blue opal - no lid
 ___ 537. Twins fruit bowl base - marigold
 ___ 538. Books - choice



Seeck Auctions

P.O. Box 377
Mason City, Iowa 50402

PRESORTED
FIRST-CLASS MAIL
U.S. POSTAGE PAID
MINNEAPOLIS, MN
PERMIT NO. 28534

*****AUTO**MIXED AADC 553

Lee Markley
PO Box 306
Mentone, IN 46539-0306

