

# AIR CAPITAL CARNIVAL GLASS CONVENTION AUCTION

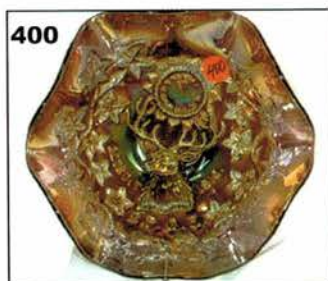
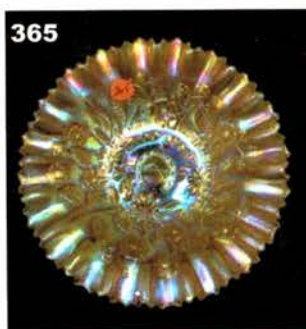
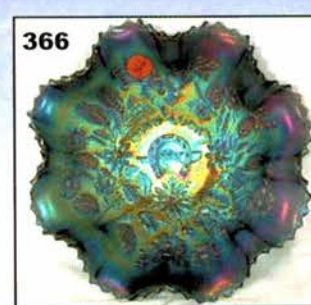
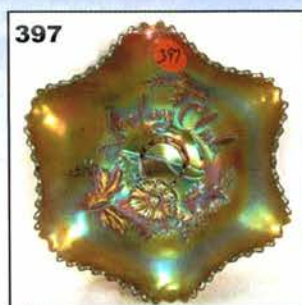
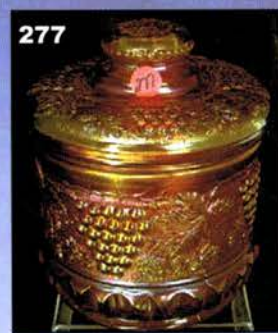
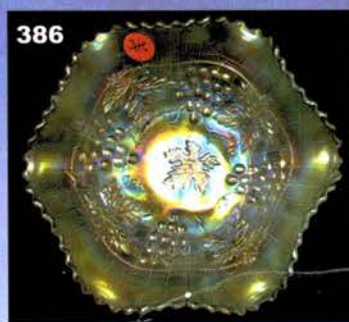
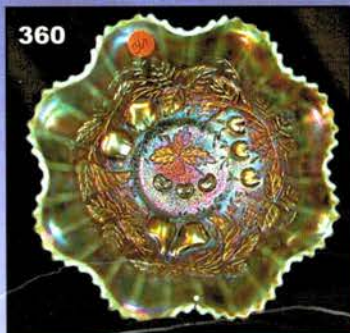
➤ Held In Wichita, Kansas

SESSION I - Friday Evening, October 13, 2006 @ 6:30 p.m.

SESSION II—Saturday, October 14, 2006 @ 9:00 a.m.

Conducted by the Mickey Reichel Auction L.C.

Website: [www.AWK-SHN.com](http://www.AWK-SHN.com)



➤ 25TH ANNUAL CONVENTION

◆◆◆ PUBLIC WELCOME ◆◆◆

**Held at La Quinta Inn Airport Hotel ☆ 5500 W. Kellogg ☆ Wichita, Kansas**

**Convention Information: Don Kime 316-733-8424**

**Preview Friday: 5:00 p.m. to 6:30 p.m. Saturday 7:30 a.m. 9:00 a.m.**

**WEB SITE: [www.AWK.SHN.com](http://www.AWK.SHN.com)**

**ABSENTEE BID POLICY:**

**WRITE IN BIDS:** If you are unable to attend the auction, we will be happy to accept absentee bids which must be received by Tuesday, October 10, 2006. DON'T DELAY. E-Mail: [mreichel@AWK-SHN.com](mailto:mreichel@AWK-SHN.com)

FOR AUCTION PRICE RESULTS: Send \$3.00 and Large S.A.S.E. to 18350 Hunters Ridge Court, Boonville, MO 65233-2971

**PLEASE NOTE:** There is a \$5 handling fee for each successful bid which will be added to the selling price for all write-in bids. This is in addition to the cost of postage, insurance and packing. Your write in bid will be entered just as if you are present and bidding. Successful bidders will be notified in 1 to 3 days by the auctioneer (so be sure to include your phone number). Direct mail bids to Auctioneer Mickey Reichel, 18350 Hunters Ridge Court, Boonville, MO 65233-2971. Terms: Cash or Check accepted with proper I.D. and Social Security Number and References. Announcements made day of the auction supercede all printed material. Not Responsible for Accidents or Sold Items.

**No return on any items once they leave the Auction Center (No Exceptions).**

**Call for additional information: 660-882-5292 days or 660-882-5283 evenings before 9:00 p.m.**

**Fax: 660-882-5892 (evening hours start FAX transmission after beep)**

**MAIL BIDS:** Items are bid on in perfect condition with average or above iridescence OR as listed in the brochures. Bids will not be carried out when damage on an item has been found during the auction.

**PEOPLE PRESENT AT AUCTION ARE RESPONSIBLE FOR FINDING ANY PINHEADS, WEAR, SPOTTINESS, MANUFACTURER'S DEFECTS OR ANY OTHER MINOR FLAWS, ETC.**

**NOTE:** Read each line, as we have accentuated the type of no particular piece, all are special.

**Session I: Preview Begins at 5:00 p.m.**  
**Contemporary Carnival**  
**Friday, October 13 at 6:30 p.m.**

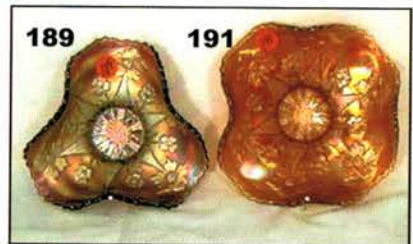
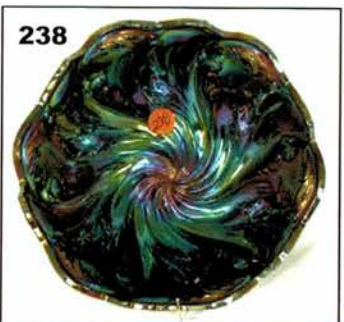
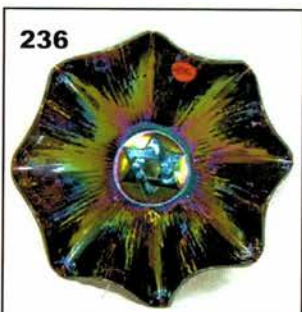
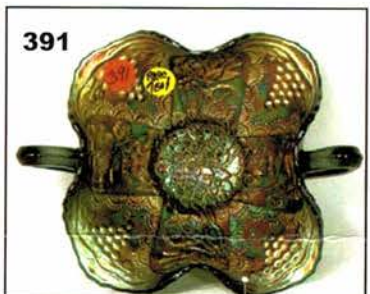
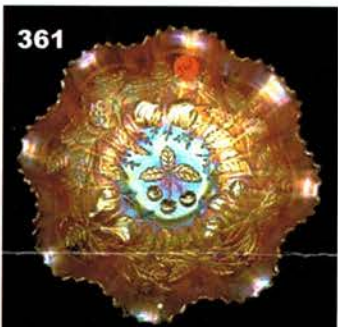
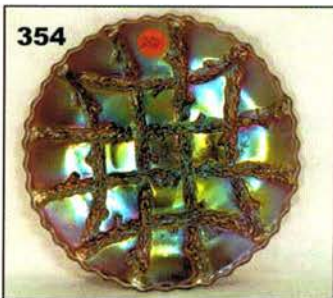
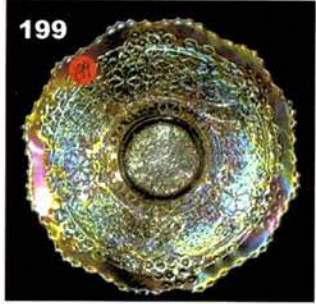
- |   |  |
|---|--|
| _____ 1. IB-Octagon, Toothpick Holder, Imperial                   | _____ 18. Tangerine-Daisy/Button Cuspidor from Tumbler sign Crider                     |
| _____ 2. Red Slag-Three in One Pattern Toothpick Holder, No Irid. | _____ 19. Green Opal-Crider Bullfrog, Paperweight                                      |
| _____ 3. M-Crider, Roman Solder Toothpick Holder                  | _____ 20. Red-Crider Art Glass Cuspidor  |
| _____ 4. Blue Milk Glass-Owl Toothpick Holder, sign Crider        | _____ 21. Butterscotch AO-Butterfly / Berry Tumbler, sign Levay 1980                   |
| _____ 5. M-Three Faces Toothpick Holder, sign Donna Crider        | _____ 22. Amber-Hobnail Cuspidor   |
| _____ 6. AO-Cuspidor Shaped Toothpick Holder, sign Crider         | _____ 23. Amberina- 4 3/4 tall, Courtship Stein  |
| _____ 7. AO-JIP, Crider Toothpick Holder                          | _____ 24. Red-Large, Hobnail, Fenton Cuspidor  |
| _____ 8. Lime G-Turkey Toothpick Holder, sign Crider              | _____ 25. Yellow Vas. Opal-O.E. Basketweave Cuspidor                                   |
| _____ 9. Red-Robert Hansen Toothpick Holder, Pat. ?               | _____ 26. Butterscotch Opal-Fenton Drapery ft'd Rosebowl                               |
| _____ 10. Red-Daisy/Button Toothpick Holder sign Robert Hansen    | _____ 27. Red-Mirrored Roses, Pickle Caster, sign Robert Hansen in Victorian sp. Frame |
| _____ 11. Red-Eye-Winker Toothpick Holder sign Robert Hansen      | _____ 28. Red-Poppy Kerosene Lamp, Rose Presznick, 1984                                |
| _____ 12. Blue-Maple Leaf Toothpick Holder sign Robert Hansen     | _____ 29. W, Loganberry Vase, sign I.G.  |
| _____ 13. Blue-Owl Stump Toothpick Holder sign Robert Hansen      | _____ 30. M, Florida Castaways Ashtray   |
| _____ 14. Red-Moon/Star Sugar Shaker sign Robert Hansen           | _____ 31. Aqua-Fenton, 10" Holly Plate, "Redish" Opal Tips                             |
| _____ 15. Red-Wreath Cherry Cuspidor                              | _____ 32. Pink-Art Glass, Large, Cuspidor  |
| _____ 16. P-Terry Crider, Art Glass Cuspidor                      | _____ 33. Blue O-10 1/2", Dia. Pts. Vase, Non Irid., N.                                |
| _____ 17. Amber-Humpty Dumpty Child's Mug sign Crider             | _____ 34. Green O-10 1/2", Tree Trunk Vase, Non Irid. N                                |
|   | _____ 35. Blue O-10 1/4"-Jeweled Heart Bowl, Non Irid.                                 |
|   | _____ 36. G-Indian Toothpick Holder  |

- \_\_\_ 37. M-Indian Toothpick Holder
- \_\_\_ 38. Red-Indian Toothpick Holder
- \_\_\_ 39. I.B-Indian Toothpick Holder, S.C.G.C. 1964-69
- \_\_\_ 40. G-Wreath Cherry Toothpick Holder
- \_\_\_ 41. Custard-Wreath Toothpick Holder, Non Irid.
- \_\_\_ 42. W-Wreath Cherry, S.C.G.C., 1964-70 Toothpick Holder
- \_\_\_ 43. M-Wreath Cherry Toothpick Holder
- \_\_\_ 44. B-Feather/ Fan Toothpick Holder
- \_\_\_ 45. P-Daisy/Button Toothpick Holder sign S
- \_\_\_ 46. Cobalt-Strawberry Little Paperweight sign Gibson
- \_\_\_ 47. Saph-1969 Los Angeles, Glass Assoc. Mug
- \_\_\_ 48. Amber-1971, A.C.G.A. Beaded Shell Mug
- \_\_\_ 49. Yellow Vas-1981 A.C.G.A. Beaded Shell Mug
- \_\_\_ 50. Red-Robin Mug, I.G.
- \_\_\_ 51. Aqua O-Hobnail, L.L. 1980, Bell
- \_\_\_ 52. Peach O-Lily of Valley Bell, L.L. 1981
- \_\_\_ 53. Custard M-1983, H.O.A.C.G.A. Loving Cup
- \_\_\_ 54. Red-1979, H.O.A.C.G.A. Loving Cup
- \_\_\_ 55. IB-1982, H.O.A.C.G.A. Corn Vase
- \_\_\_ 56. Red-1978, H.O.A.C.G.A. Corn Vase
- \_\_\_ 57. Red-1979, H.O.A.C.G.A. Good Luck Hatpin Holder
- \_\_\_ 58. IG-1980, H.O.A.C.G.A. Good Luck Hatpin Holder
- \_\_\_ 59. Red-Good Luck Hatpin
- \_\_\_ 60. Red-Good Luck Hatpin
- \_\_\_ 61. Red-1984 H.O.A.C.G.A. Good Luck Fernery Bowl
- \_\_\_ 62. Red-1981 H.O.A.C.G.A. Candle Lamp Complete
- \_\_\_ 63. P.O. Vaseline-Frolicking Bears, I.C.G.A 1983 Cuspidor
- \_\_\_ 64. Vas. Opal-1983, I.C.G.A. Frolicking Bears Cuspidor
- \_\_\_ 65. B-Fenton 1776-1976, Eagle Paperweight
- \_\_\_ 66. B-St. Clair Cactus Tumbler
- \_\_\_ 67. M-St. Clair Cactus Tumbler
- \_\_\_ 68. I.B-Feather/Fan S.C.G.C. 1964-69, Tumbler
- \_\_\_ 69. M-Feather/Fan Tumbler
- \_\_\_ 70. M-Feather/Fan Tumbler w/Flared Opening (looks old)
- \_\_\_ 71. Light Icy Blue-Cactus Tumbler
- \_\_\_ 72. Red-Holly Band, St. Clair Tumbler
- \_\_\_ 73. B, Holly Band, St. Clair Tumbler
- \_\_\_ 74. Dk. Ice B-Holly Band, St. Clair Tumbler
- \_\_\_ 75. Frosty W-Holly Band, St. Clair Tumbler
- \_\_\_ 76. M-Mayflower Tumbler, sign IG
- \_\_\_ 77. M-Windmill Tumbler sign IG
- \_\_\_ 78. Red-1975, Good Luck Tumbler
- \_\_\_ 79. M-Frosted Windmill Tumbler, sign IG
- \_\_\_ 80. B-Fleur De. Lis Tumbler, sign St. Clair

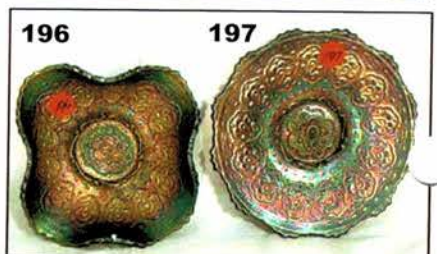
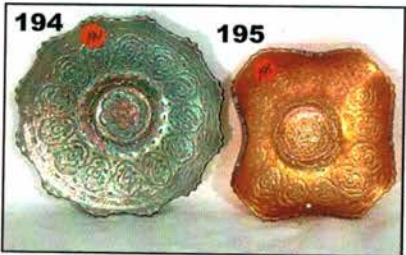
- \_\_\_ 81. Red-Robin Tumbler sign St. Clair
- \_\_\_ 82. I.B-In God We Trust Tumbler
- \_\_\_ 83. Red-In God We Trust Tumbler
- \_\_\_ 84. Aqua O-Hobnail, Fenton Tumbler
- \_\_\_ 85. P-Westmoreland, Checkerboard, Tumbler
- \_\_\_ 86. M-Crider, Hobstar/Feather Tumbler
- \_\_\_ 87. Lav.-Enameled Lily of Valley, Crider Tumbler
- \_\_\_ 88. W-Grape & Cable Tumbler N-A with Circle
- \_\_\_ 89. Red-1991, H.O.A.C.G.A. Peacock/Dahlia Plate
- \_\_\_ 90. Red-1994, A.C.G.A. Inverted Strawberry Salt/Pep Set
- \_\_\_ 91. B-18", Swung, Hobnail Fenton Vase
- \_\_\_ 92. Lime G-Flower Medallion Tiara Water Pitcher
- \_\_\_ 93. Lime G-Flower Medallion Tiara Water Goblet
- \_\_\_ 94. Lime G-Tiara, Ige Swan Vase
- \_\_\_ 95. Aqua O-Heavy Iris, 1991, Gibson Basket
- \_\_\_ 96. Aqua O-C.R.E, Tea Bell
- \_\_\_ 97. Red-Fenton, Persian Medallion Handled Basket
- \_\_\_ 98. Aqua O-Cactus Vinegar Cruet
- \_\_\_ 99. Aqua O-Fenton Orange Tree, Handled Rosebowl
- \_\_\_ 100. Green Opal Vas.-large, Fenton, 7", Gr/Cable Cuspidor

**Session II: Saturday, October 14 @ 9:00 a.m.**

- \_\_\_ 101. Pastel M-7 1/2", Radium Morning Glory Vase
- \_\_\_ 102. Rare-Powder B, 10" Pulled Loop Vase w/Marigold Overlay
- \_\_\_ 103. Plum Opal-9 1/2", Non Irid, Boggy Bayou, Vase
- \_\_\_ 104. BA-9 3/8", lined lattice Vase, Elec.
- \_\_\_ 105. Moonlight Blue Opal-11 3/4", Ripple Vase, Non Irid
- \_\_\_ 106. Scare B-12 3/8", Fenton Bullseye and Beads Vase
- \_\_\_ 107. Crystal-12", Europa, Czech. Funeral Vase, w/M Top, 6", Base is 5" (Possible One of a Kind)
- \_\_\_ 108. Gorgeous B-N, 12 1/2", Midsize Tree Trunk Vase w/6" opening
- \_\_\_ 109. Saph-N, 10 7/8" Fine Rib Vase, Very Scarce
- \_\_\_ 110. Lime IG-N, 10", Fine rib Vase Amazing Color
- \_\_\_ 111. Saph-N, 9 3/4" Tree Trunk Vase, Great One
- \_\_\_ 112. Lime Vas.-8 1/2", Imp., Beaded Bullseye Vase, First Time Offering
- \_\_\_ 113. Radium Elec P, 8 3/4", Imp., Beaded Bulleye Vase w/6 3/4" opening
- \_\_\_ 114. Green-8", Imp., Beaded Bullseye Vase w6 3/8" opening, Radium and Nice
- \_\_\_ 115. M-8", Imp., Beaded Bullseye Vase w/5 1/2" Opening
- \_\_\_ 116. Lav-7 1/2", Beaded Bullseye Vase, w/6 3/4" opening
- \_\_\_ 117. Outstanding P-8 3/4", Ripple Vase, w/6" opening & 3 3/8" Base
- \_\_\_ 118. M-7 3/4" Morning Glory Vase, Dark Radium



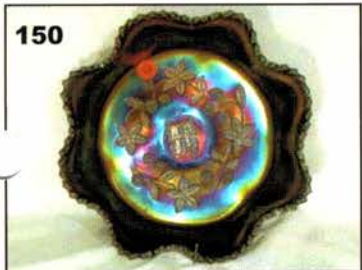
**A GREAT COLLECTION OF  
SMALL PLATES.  
COLORS AND RARITIES**



119. BA-7 3/4", Circle Scroll Vase, Radium Beauty
120. Elec. P-7 1/4", Morning Glory Little Vase
121. M-Thin Rib & Drape, 5 1/2" Vase, Elec. Pumpkin
122. Super P-4 1/2", Morning Glory Vase, Super Little Guy
123. M-N, 6", Tree Trunk Squatty Vase w/5" opening
124. M-7 1/4", Panaji Peacock Eye Vase
125. Radium M-9 1/2", JIP, Morning Glory Vase, Super
126. Pumpkin M-N, 10" Tree Trunk Vase
127. PO-6 1/2", Target Squatty Vase
128. M-Waterlilly/Cattail Whimsey (4" tall)
129. M-Western Thistle Whimsey Vase, Made from Tumbler
130. P-Lined Lattice 7 1/2" tall Vase
131. M-6 1/2" Long Thumbprint Vase
132. P-8", Lattice/Points Vase
133. Pale M-N, Stippled 3 Fruits Bowl, Marie Chip
134. G-N, 9", 3 Fruits Plate, BW Ex.
135. P-N, Ruffled, 3 Fruits, Collar Based Bowl
136. P-N, 7 1/4", 8 ruffle, Star of David/Bows Bowl
137. Pumpkin M-N, Beaded Cable Rosebowl
138. M-N, Wild Rose, Ft'd Nut Bowl
139. P-N, 9 3/4", Ruffled Wild Strawberry smooth Back Bowl
140. Scarce B-N, 9 3/4", ICS Peacock/Urn Bowl
141. B-N, 5 3/4", ICS Peacock/Urn, Sm. Bowl, Elec. Irid
142. B-N, 5 3/4", ICS Peacock/rn, Sm. Bowl, Elec. Irid
143. B-N, 5 3/4", ICS, Peacock Urn Bowl, edge flaws
144. B-N, 5 3/4", ICS, Peacock, Urn Bowl, silver w/purple highlights
145. Aqua w/Opal Tips-N, 9", Ruffled, Peacock Bowl, w/Magenta Highlights
146. G-N, 8 1/2" Wild Strawberry Hand Grip Plate
147. Soft Stretch Saph.-11 3/4", Plate w/28 Panels
148. PO-Dugan, 8 3/4", Rnd, Double Stemmed Roses Bowl
149. PO-7 3/4", CRE, Smooth Ray/Single Flower Plate
150. Scarce, Beautiful B-9 3/4" Butterfly/Berry, ruffled Master Bowl, Multi elec.
151. B-8 3/4", 3/1 edge Dragon/Lotus Bowl, Scarce Shape
152. G-7 1/4", Fenton, 6 Ruffle, Vintage Grape Bowl
153. A-7 1/4", Fenton, 6 Ruffle, Vintage Grape Bowl
154. A-6", Deep, Rnd, Fenton, Vintage Grape Bowl
155. B-8", Spat. Ft'd, Ruffled, Grape/Cable Fenton Bowl
156. A-8 3/4", Spat. Ft'd, Fenton, Grape/Cable Plate
157. G-7 3/4" Spat. Ft'd, Ruffled, Two Flowers Bowl
158. DK. M-Ige., 10", Cherry Chain, 8 Ruffle Bowl, Orange Tree on Reverse
159. Pumpkin M-9 3/4" Ft'd, Two Flowers Bowl
160. Saph-Ft'd, 6", Ruffled, Lotus/Poinsettia Bowl, Rare Color
161. Pumpkin M-ICS, 9", Ball ft'd, Lotus/Poinsettia Bowl
162. Beautiful Radium M-9 1/2", Fenton Holly Plate
163. Scarce A, 9", 6 ruffle, Fenton Holly Bowl
164. B-9 3/8", Fenton Holly 3/1 edge Bowl
165. B-ICS, 8 1/4", Fenton Holly Bowl, Multi Elec.
166. Rich M-11", Rnd. Ball ft'd, Stage/Holly Bowl, Dandy
167. Dk. Pink ?-11", Ball ft'd, ICS, Stage/Holy Bowl, Unusual Color
168. Teal G-9", 8 Ruffle, Fenton Holly Bowl, Different Color
169. Pumpkin M-8 1/4", ICS, Fenton Holly Bowl
170. Pastel M,-8 1/4", ICS, Fenton Holly Bowl
171. Brick Red/Amber?-9", Ruffled, Fenton Holly Bowl
172. W,-9 1/2", Fenton Holly Plate, Blue Irid
173. Pastel M-9 1/4", Leaf Chain Plate, Frosty
174. G-9 1/2", collar Base, Peacock/Grape Plate, Rare Base
175. M-9 1/2", Peacock/Grape Plate, Collar Base
176. Radium G-7 1/2", Fenton Vintage Grape Plate, Exquisite Size and Color
177. Radium B-7 1/2", Fenton Vintage Grape Plate, Beauty
178. Rich M-7 3/4", Flat, Fenton Vintage Grape Plate, WOW!
179. Light M-7 1'4", Stippled Rays Plate w/scale, Band Ext.
180. "Amberish"-7", Stippled Rays Plate w/scale Band Ext.
181. B-6 1/2", Rnd, 12 scallop Fenton Pine Cone Plate, Dandy
182. G-6 1/2" Rnd, 12 scallop, Pine Cone Beautiful Sm. Plate
183. Rich M-flat, 7 3/4", Leaf Chain Plate w/Grape Exterior
184. G-6", Fenton, Peacock Tail, Rare Tri Corner Plate
185. A-6", Fenton, Peacock Tail, Rare Tri Corner Plate
186. B-6", Fenton Small Size Vintage Grape, Rare, Tri Corner Plate, 4 Sets of Grapes
187. Pumpkin M-6", Fenton, Small Size Vintage Grape, Rare, Tri Corner Plate w/4 Sets of Grapes
188. Pumpkin M-6 1/4", Flat Fenton, Small Size Vintage Plate w/4 Sets of Grapes on this Rarity
189. Rare A-6", Fenton, Little Flowers, Tri-Corner, Plate
190. Gorgeous M-6 1/2", Flat, Stretchy, Little Flowers Plate
191. Stunning M-6 1/2", 4 Sides Up, Little Flowers Plate
192. Ultra Rare Vaseline-6", Persian Medallion Plate w/Marigold Overlay, Plain Ext.
193. Dk M-6", Persian Medallion Plate w/Plain Ext.
194. BA-6 1/2", Persian Medallion Plate, A Dream Find
195. Beautiful M-6", Persian Medallion Plate w/Four Sides Up
196. B-6 1/4", Persian Medallion Plate w/4 Sides Up
197. B-6 1/4", Persian Medallion Flat Plate, Impressive

- \_\_\_\_\_ 198. W-6 1/2", Cherry Chain Plate, Orange Tree Ext.,
- \_\_\_\_\_ 199. Radium Elec. W-7 1/2", Flat, Leaf Chain Plate
- \_\_\_\_\_ 200. Very Rare Classic, B-10 Mums, 7 pc. Tankard, Water Set, Well Matched, Few Known
- \_\_\_\_\_ 201. Spectacular M, Rising Sun-9 1/4", Pedestal Pitcher, w/6 Matching Tumblers
- \_\_\_\_\_ 202. Elegant W-Dugan Floral/Grape Bulbous, Water Pitcher w/Blue Highlights
- \_\_\_\_\_ 203. W-Floral/Grape Tumbler w/Blue Highlights
- \_\_\_\_\_ 204. Scarce Radium B-Fenton, Floral/Grape Bulbous Water Pitcher
- \_\_\_\_\_ 205. Flashy Pastel M-Imp, Soda Gold Water Pitcher, Lots of Blues
- \_\_\_\_\_ 206. Rich M-Fenton Dandelion Tankard w/6 Matching Tumblers
- \_\_\_\_\_ 207. Dk G-Fenton, Paneled Dandelion Tankard, Radium Beauty
- \_\_\_\_\_ 208. Great G-Fenton Paneled Dandelion Tumbler
- \_\_\_\_\_ 209. Blue-Fenton, Butterfly/Berries Water Pitcher w/6 tumblers, Few Known
- \_\_\_\_\_ 210. Dk M-N, Interior Poinsettia Tumbler
- \_\_\_\_\_ 211. Dk. Radium M-Ranger Tumbler sign C in a W
- \_\_\_\_\_ 212. Beautiful Radium M-Jacobian Ranger Tumbler w/ Reg. #
- \_\_\_\_\_ 213. Satin M-3 1/2" tall, Aussie, Block/Arches Tumbler
- \_\_\_\_\_ 214. Awesome Radium M-Drapery (VT) Tumbler
- \_\_\_\_\_ 215. Radium Elec P-Imp., Tigerlily, 4 1/4" Tumbler
- \_\_\_\_\_ 216. Rare B-Imp, 3 7/8, flared (VT) Tigerlily Tumbler
- \_\_\_\_\_ 217. Radium Pumpkin M-Flute #5 Tumbler
- \_\_\_\_\_ 218. Rare Dk. A-Cambridge Inverted Strawberry Tumbler
- \_\_\_\_\_ 219. B-Near Cut, Inverted Strawberry Tumbler Flared Top
- \_\_\_\_\_ 220. Dk-A, Cambridge, Inverted Thistle Tumbler, Radium Rarity
- \_\_\_\_\_ 221. Deep B-Grand Thistle Tumbler, Magnificent Example
- \_\_\_\_\_ 222. Rare Dk. M-Cut Cosmos Tumbler
- \_\_\_\_\_ 223. Pumpkin Radium-Example of Field Thistle Tumbler
- \_\_\_\_\_ 224. Honey Amber-Rare, Adv. J.R. Millner Co. Cosmos/Cane Tumbler
- \_\_\_\_\_ 225. M-Cosmos/Cane Tumbler w/Factory Ground Base
- \_\_\_\_\_ 226. Rich M-N, Grape/Cable Sugar Bowl w/lid
- \_\_\_\_\_ 227. M-N, Grape/Cable Creamer
- \_\_\_\_\_ 228. M-N, Grape/Cable Spooner
- \_\_\_\_\_ 229. M-N, Grape/Cable Butter Dish Lid
- \_\_\_\_\_ 230. Spectacular G-Cambridge Invert. Feather Cracker Jar w/lid
- \_\_\_\_\_ 231. M-Imp., Colonial Lemonade Mug, Dk. Radium
- \_\_\_\_\_ 232. Smoke-9" Imp. Ruffled Pansy Bowl, Very Impressive
- \_\_\_\_\_ 233. Amber-Imp. 5 1/4" Lustre Rose Rosebowl
- \_\_\_\_\_ 234. Elec. P-5 1/2", Imp. Scroll Embossed Ruffled Bowl, File Ext.
- \_\_\_\_\_ 235. Radium P-7 1/2", Ruffled Scroll Embossed Bowl, Scale Hobstar/Tassel Ext., Rim Chip
- \_\_\_\_\_ 236. Radium P-Imp. Star of David bowl, Dripping w/Irid
- \_\_\_\_\_ 237. RED Amberina-Imp. Lustre Rose 7 1/2", ft'd, flared Bowl, Non Irid
- \_\_\_\_\_ 238. Elec P-Imp. 8", Rnd., Acanthus Bowl, Show Stopper
- \_\_\_\_\_ 239. Fantastic P-Diamond/Sunburst Decanter w/ Stopper, Opportunity Time
- \_\_\_\_\_ 240. Beautiful P-Flared Dia./Sunburst Wines, 3 X \$
- \_\_\_\_\_ 241. P-Dia./Sunburst Wine w/Straight Sides
- \_\_\_\_\_ 242. Lav-Dia./Sunburst Wines w/Straight Sides 2 X \$
- \_\_\_\_\_ 243. W-Hammered Bell (Bell w/Clapper)
- \_\_\_\_\_ 244. Stretch Red-Imp. (?), 7 3/4", Lge. Vase, 6 3/4" Flared Top, 3 1/2" Base
- \_\_\_\_\_ 245. Saph. B-6 1/2" Pair of #2000 Candle Sticks Trumpet Shape
- \_\_\_\_\_ 246. Smoke Lav.-10" Colonial Candle Stick, Rare Color
- \_\_\_\_\_ 247. Fantastic Green-N, 7", Fruits & Flowers Medallion Bowl, Rare
- \_\_\_\_\_ 248. G-Stippled N, Fruits & Flowers Bon Bon Also Rare
- \_\_\_\_\_ 249. G-N, 8 3/4" Stippled Peacock Bowl, Tip Chip, 2 or 3 Known
- \_\_\_\_\_ 250. Blue-J.I.P., CRE Blackberry Spray Hat, A Beauty
- \_\_\_\_\_ 251. Extra Nice M-8 3/4", 8 Ruffle Dragon/Lotus bowl
- \_\_\_\_\_ 252. M-10 1/2", ICS, Ft'd, Chrysanthemum/Windmills, Bowl, Pretty Blue, Irid
- \_\_\_\_\_ 253. B-9 1/4", Low 3/1 Ribbon Tie Bowl
- \_\_\_\_\_ 254. Beautiful M-3/1 Fenton, Peacock/Urn Bowl
- \_\_\_\_\_ 255. B-3" Base, Fenton, Orange Tree Shaving Mug
- \_\_\_\_\_ 256. M-Flashed, little Kerosene Lamp w/Enameled Flowers, 7" Tall, Neat Novelty
- \_\_\_\_\_ 257. M-Flashed, 7 3/4" Tall Enameled Flowers Vessel
- \_\_\_\_\_ 258. M-Flashed, Punch Cup, Souvenir, Vesta, Minn.
- \_\_\_\_\_ 259. M-Starlyte Gas Shades 2 for 1 Price
- \_\_\_\_\_ 260. M-Starlyte Elec. Little Shades 2 X \$
- \_\_\_\_\_ 261. Moonstone-Drapery, 2 1/4" Fitter Elec. Shades 2 X \$
- \_\_\_\_\_ 262. Moonstone-1 1/4", Fitter, Flared Panel, Elec. Shades 3 for 1 Price
- \_\_\_\_\_ 263. M-Satin Etched, 2 1/4" Fitter, Signed, Nuart Shades 4X \$
- \_\_\_\_\_ 264. B-Aurora Pearls, 11", 3/1 edge, Enamel Decorated Brides Bowl, Classic
- \_\_\_\_\_ 265. G-N, PCE, Grape/Cable Bowl, BW Ext.
- \_\_\_\_\_ 266. P-N 9", Grape/Cable Smooth Back Plate, Elec. Blue Irid (VT)
- \_\_\_\_\_ 267. P-N, 9", Grape/Cable Plate, BW Ext. Multi Irid
- \_\_\_\_\_ 268. G-N, 9", Grape/Cable Plate w/BW Ext., Bouquet of Color
- \_\_\_\_\_ 269. Pumpkin M-N, 9", Grape/Cable (VT) Plate, Smooth Ext.
- \_\_\_\_\_ 270. (a) Pastel M-Stippled Grape/Cable Bonbon w/BW Ext.
- \_\_\_\_\_ 270. Rare G-N, Grape/Cable Mid Size, Punchbowl w/Base, Seldom Seen

150



201



264



206

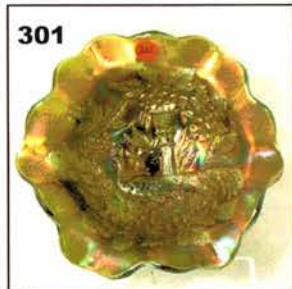


382

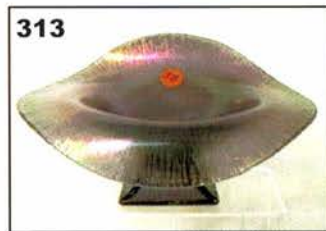


384

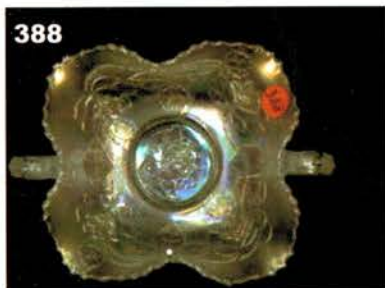
301



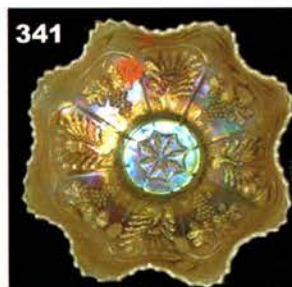
313



388



341



340



373



374

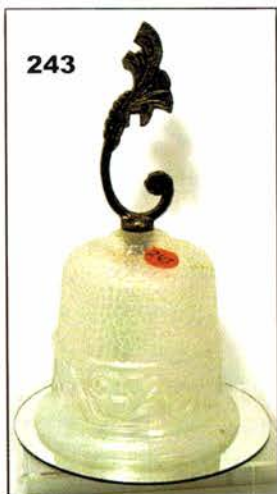
375



270



243



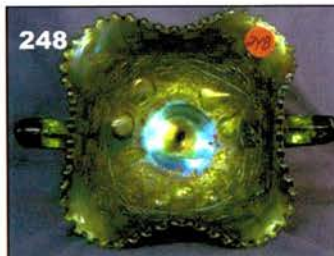
247



108



248



257

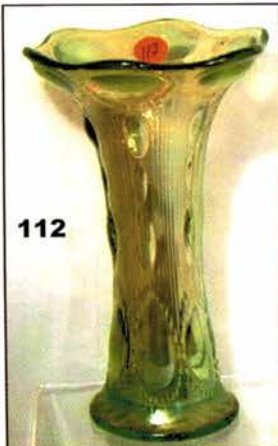
256



109-111



112



113-116



271. P-N, 7 1/2", Grape/Cable Plate w/BW Ext., Rare Size
272. Lav. Smoke-N, 6 1/4", Grape/Cable, 2 Sides Up Card Tray, Unique Fine
273. W-N, Grape/Cable Cup w/ 6" Lightly Turned Up Saucer, A Great Pair
274. P-N, 6 1/2", Grape/Cable, 2 Sides Up Card Tray
275. P-N, Grape/Cable Cracker Jar w/lid, Great Multi Irid
276. Rare M-N, Stippled, Base and Lid Grape/Cable Cracker Jar, Pumpkin
277. Pumpkin M-N, Stippled, Base and Lid Tobacco, Humidor, Another Rare Find
278. Scarce P-N, Grape/Cable, Ft'd Fernery Bowl
279. P-N, 8 3/4", Grape/Cable (VT) Smooth Back Bowl, Art Glass Iridescence
280. Stunning M-N, Grape/Cable, 10 1/2", ICS Master Bowl, Opportunity Knocks
281. P-N, Grape/Cable Covered Compote—Scarce
282. M-N, 10", Ruffled, Grape/Cable Open compote, loaded w/pinks
283. P-N, Grape/Cable Sweetmeat w/lid, Old Favorite
284. G-Fenton, 5 1/2", Rnd, Little Flowers Bowl, Radium
285. G-Fenton, 5 1/2", Ruffled Little Flowers, Satin Bowl
286. Pretty B-Fenton, 6", Low, Rnd, Vintage Grape Bowl
287. Pumpkin M-6", Ruffled Pine Cone Bowl
288. Great M-7", ICS, Lions Bowl, Sharp Details
289. M-7", Ruffled Lions Bowl
290. Dk. B-Ft'd, Horse Medallion, Flared Nut Bowl, Great Pattern
291. M-6 1/4" Rnd, Flared, Peacock/Dahlia Bowl, Neat shape
292. Pretty B-Ruffled Fenton, Little Holly Compote
293. Pretty B-Goblet Shaped, Fenton Little Holly, Compote
294. Rare W-Frosty, 6", Ruffled Captive Rose Compote
295. Rich M-Fenton, Ruffled Holy Compote
296. Aqua Stretch Satin, Rib Optic, 7 1/2" Compote, shaped Vase, Very Scarce
297. W Stretch, Imp. Chesterfield, 6", Rnd. Compote, Iron Cross Signed
298. Gorgeous P-N, Hearts/Flowers Compote, Exceptional
299. Outstanding AO-N, Hearts/Flowers Compote
300. Scarce B-N, Peacock/Fountain Compote
301. G-MIBG, Classic, lge, Peacock/Urn Ruffled Compote
302. M-MIBG, Ruffled Peacock Tail (VT) Compote, Super Satin
303. Pretty Satin M-MIBG, 10 1/2", Ruffled Rosalind Bowl
304. Lav.-6", ICS, MIBG, Peacock/Urn (VT) Bowl, 4 Tail Feathers
305. Lav.-6", MIBG, ICS, Peacock Bowl, 7Tail Feathers
306. W-Imp, 5", Frosted Block Rosebowl, Rare Color
307. Clam-7 1/2", Ruffled, Frosted Block Bowl
308. W-Stretch, Imp, 10 1/2", Balloon Pattern Handled Server
309. W-Stretch, Stemmed Candy Dish w/lid
310. Celeste B-Stretch, 9"US Glass, Plate # 718 pr. Candlesticks
311. Saph-8 1/2", #695 Colonial pr. Candlesticks
312. Stretch N, Saph-10 7/8", Compote, Unusual
313. Wisteria-N, 9", JIP, Stretch Compote, RARE
314. Clambroth, Imp, Lustre Rose Fernery, Bowl, Plain, inter.
315. Pastel M-Imp, 11 1/2", Rnd, Flared, Lustre Rose Centerpiece Bowl, Plain Inter.
316. Irid, Crystal-Imp. Oval Pansy Pickle Dish
317. Great M-11 1/4", Imp, Heavy Grape Chop Plate, Blues and Pinks
318. Lime G-6 1/2", Imperial Grape Flat Plate
319. Elec P-6 3/8", Imperial Grape Flat Plate
320. P-Imp, Flute, Breakfast Cream/Sugar, Nifty Set
321. Gorgeous P-9 1/4", Imp, Open Rose Plate, Champion Find
322. M-Jain, 6", Diamond/Heart Ruffled Vase, Scarce Novelty
323. M-Jain, 5 1/2", Diamond/Heart Ruffled Vase
324. Dk. M-6", Diamond Shape, Quarter Block, Covered Candy Dish, Quite Rare
325. PO-Leaf Rays Nappy, Lots of Opal
326. M-Australian, 5 1/2", 8 Ruffle, Emu Bowl, Super Color
327. PO-Dugan Dogwood Sprays, 10 Ruffled, Dome Ft'd Bowl
328. Beautiful B-7", Low Ruffled Fenton, Peacock Tail Bowl, Scarce Color
329. A-3/1 edge, 8 3/4", Fenton Peacock Tail Fowl, Neat Pattern
330. G-8 1/4", ICS, Fenton, Peacock Tail Bowl
331. Scarce A-8 1/4", CRE, Fenton Peacock Tail Bowl
332. Dk. M-8", ICS, Ribbon Tie Bowl
333. Magnificent M-10 1/2", Ruffled Ball, Ft'd, Two Flowers, Fruit Bowl
334. Beautiful G-8", ICS,Fenton, Vintage Grape Bowl, Very Impressive
335. TEAL-8 1/2", 8 ruffle, Fenton Vintage Grape Bowl, Unusual Color
336. Rich Amber-9", 8 Ruffle, Fenton Vintage Grape Bowl
337. Lav.-9", 8 ruffle, Fenton, Dragon/Lotus Bowl, Unusual Color
338. Moonstone-6", JIP, Flowering Dill, CRE Bowl, Seldom Seen
339. Outstanding G-8", ICS, Captive Rose Bow;
340. Vaseline O-9", Ruffled, Peacock/Grape Bowl, Very Scarce
341. Fantastic PO-9", Sg., 8 Ruffle Peacock/Grape Bowl
342. Rich PO-8 3/4", 3/1 edge Peacock/Grape Bowl, Rarity
343. DKM-4 1/2", 4 Ruffle Kittens Bowl, The Best



**More Great Small Plates Coming Up. WOW!**

- \_\_\_\_\_ 344. P-Dugan, 6 1/4", CRE, smooth Rays Plate w/  
Jewel Heart Ext.
- \_\_\_\_\_ 345. P-Dugan, 6 1/4", CRE, Cherries Plate w/J.H. Ext.
- \_\_\_\_\_ 346. Radium Pastel M-5 1/2", Fostoria, Sydney, Champagne  
Card Tray, 2 Sides Folded in Plate, Extremely Rare
- \_\_\_\_\_ 347. Radium M-6", Tri Corner Waterlily Cattails Plate
- \_\_\_\_\_ 348. P.O.-6 1/2", 4 Flowers, BW Plate, lots of Opal
- \_\_\_\_\_ 349. Beautiful M-6 1/2", Persian Garden Plate w/BW Ext.
- \_\_\_\_\_ 350. Rare PO-6 1/2", Persian Garden Plate w/BW  
Ext, (1 1/2 Opal)
- \_\_\_\_\_ 351. Frosty W-6 3/4", Persian Garden Plate w/BW Ext.
- \_\_\_\_\_ 352. Frosty W-6 5/8", Persian Garden Plate w/Pool of Pearls
- \_\_\_\_\_ 353. Great W-7", Grapevine/Lattice Plate
- \_\_\_\_\_ 354. Soft P-7 1/4", Grapevine/Lattice Plate, Spectacular Irid
- \_\_\_\_\_ 355. Rare W-7", Fishscale/Beads Plate, Rainbow Irid
- \_\_\_\_\_ 356. P-N, 7 1/2", Wild Strawberry Hand Grip Plate,  
Multi Elec., Dandy
- \_\_\_\_\_ 357. Scarce G-8", N, Fruits/Flowers Plate, 2 Sides Up,  
Out of Ordinary Size/Color
- \_\_\_\_\_ 358. Smoke-Imp, 9 1/2", 8 ruffle, Diamond Ring Bowl
- \_\_\_\_\_ 359. M-9", N, Ruffled Strawberry Bowl
- \_\_\_\_\_ 360. Spectacular AO-N, Collar Base, Ruffled, Stippled,  
Three Fruits Bowl, Absolute Winner
- \_\_\_\_\_ 361. Fantastic M-N, Collar Base, Ruffled,  
Stippled, Three Fruits Bowl
- \_\_\_\_\_ 362. Beautiful P-N, 9", Three Fruits Plate, Plain Ext.
- \_\_\_\_\_ 363. Rich A-N, 9", Strawberry Plate, BW Ext. (NICE)
- \_\_\_\_\_ 364. P-N, 9", Ruffled Nippon bowl, BW Ext, Lots of Color
- \_\_\_\_\_ 365. Great Pastel M-N, PCE, Good Luck Bowl, Blue Irids
- \_\_\_\_\_ 366. RARE Rennigers B-N, Stippled Good Luck Ruffled  
Bowl w/Thin Base
- \_\_\_\_\_ 367. Rich P-N, Ruffled Good Luck Bowl w/BW Ext. Well  
Defined
- \_\_\_\_\_ 368. Scarce B-N, 5 1/2", ICS, Fully Stippled Peacock/Urn  
Bowl
- \_\_\_\_\_ 369. 50 Carnival Glass Buttons Framed for Viewing Pleasure  
also Very Rare
- \_\_\_\_\_ 370. Dk. M-lge, Intaglio Rose bowl, Most Unique
- \_\_\_\_\_ 371. Dk. M-N, Leaf Beads Rosebowl w/Sunflower interior
- \_\_\_\_\_ 372. G-N, Leaf Beads Rosebowl w/Sunflower interior, tough  
to find
- \_\_\_\_\_ 373. A.O-Leaf Beads Rosebowl w/plain interior, old favorite
- \_\_\_\_\_ 374. Impressive A.O-N, Beaded Cable Rosebowl
- \_\_\_\_\_ 375. Lav. Ice-N, Beaded Cable Rosebowl, unusual pastel
- \_\_\_\_\_ 376. Stunning Aqua-N, Beaded Cable Rosebowl, few known
- \_\_\_\_\_ 377. G-N, Plain Interior, Fine Cut/Roses Rosebowl
- \_\_\_\_\_ 378. Dk. Ice B-Fancy Interior Fine/Cut Roses Rosebowl

- \_\_\_\_\_ 379. Saph. AO-N, Drapery Rosebowl
- \_\_\_\_\_ 380. Saph-Opal Edge, Fenton, 6" Ruffle, Blackberry Spray  
Hat (Not Aqua) RARE COLOR
- \_\_\_\_\_ 381. Saph-6 1'4", Sq Ruffled, Blackberry Spray Hat (Two Sets  
Berries) Also Rare Color
- \_\_\_\_\_ 382. AO-N, Dandelion Mug, loaded w/opal
- \_\_\_\_\_ 383. Elec. B-N, Dandelion Mug, loaded w/opal
- \_\_\_\_\_ 384. Gorgeous AO-N, Singing Birds Mug, top shelf item
- \_\_\_\_\_ 385. Fantastic IB-N, PCE Nippon Bowl, scarce B.W. Ext.
- \_\_\_\_\_ 386. Very Rare IB-N, 7 1/2", Ruffled, Grape/cable bowl, BW  
Ext. (Few Known)
- \_\_\_\_\_ 387. Dk B.-6", Fenton, Strawberry Bonbon
- \_\_\_\_\_ 388. Ultra Rare W-Rose Bouquet Bonbon, Few Known,  
Just Beautiful
- \_\_\_\_\_ 389. W-Pond Lily Bonbon, Super pastel irid
- \_\_\_\_\_ 390. Rare Aqua-Persian Medallion Bonbon, Seldom Seen
- \_\_\_\_\_ 391. Teal-Lotus/Grape (VT) Bonbon, Rare Color
- \_\_\_\_\_ 392. P-N, Stippled Ray, Butterfly Bonbon w/Threaded exterior
- \_\_\_\_\_ 393. Elec. B-N, Flat, 9 1/4", Peacocks Plate
- \_\_\_\_\_ 394. Pink Stretch-8 1/2" plate, w/Floral Enamel Decoration,  
most unusual
- \_\_\_\_\_ 395. Elec. P-Dugan Cherries, 8 1/2", 10 Ruffle, ft'd bowl
- \_\_\_\_\_ 396. Scarce P-Dugan, 9 1/4", 10 Ruffle, Double Stem, Rosebowl
- \_\_\_\_\_ 397. Lav.-N, 6 1/4", Jockey Club Adver. Bowl, Advertising is  
Hot
- \_\_\_\_\_ 398. Radium M-8 3/4", 10 Ruffle Brooklyn Bridge Bowl
- \_\_\_\_\_ 399. Sweet A-N, Fern Brand Chocolate Little Plate, Head of  
the Class
- \_\_\_\_\_ 400. Radium A-MIBG, 7 1'2" Ruffled, 1910 Detroit, Elks  
(2 eyed), Bowl, Incredible item

**Auction Calendar of Events**

**Saturday, October 28 @ 9:00 am  
and**

**Sunday, October 29 @ 9:00 am  
Don Benett 1,400 Piece Hull Pottery Collection  
Held at Boonville Auction Center**

**Carnival Auction**

**Saturday, November 4, 2006 @ 9:00 am  
Alabama Collection Approx 400 Lots**

**Booking 1 Pc or More for 2007 New Years  
16th Carnival Glass Extravaganza  
Saturday, January 6, 2007 @ 9:00 am**

**Snow Day Only  
Sunday, January 7, 2007 @ 9:00 am**

[www.AWK-SHN.com](http://www.AWK-SHN.com)

**Mickey Reichel**  
**Antique & Auction, L.C.**  
18350 Hunters Ridge Court  
Boonville, MO 65233

PRESORTED  
FIRST CLASS MAIL  
US POSTAGE PAID  
SEDALIA, MO  
PERMIT 217

Return Service Requested

First Class Mail  
**Special Invitation To:**

200



7\*112\*\*\*\*\*MIXED AADC 650

LEE MARKLEY

PO BOX 306

MENTONE, IN 46539-0306



100

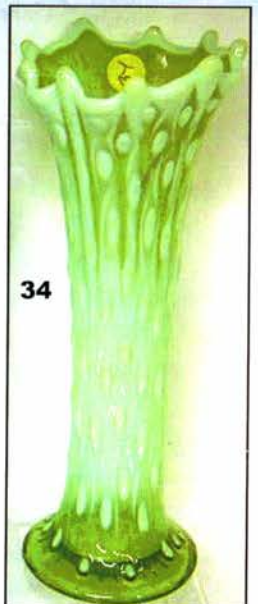
98-99



103-105



207



34

27



15

14



310

