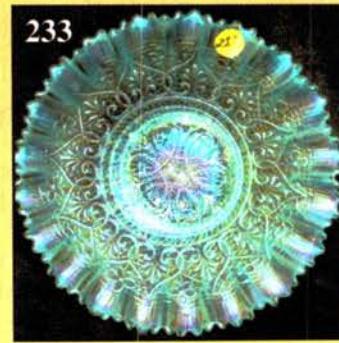
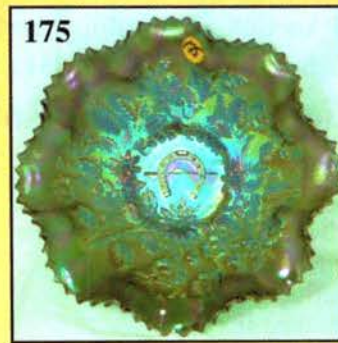
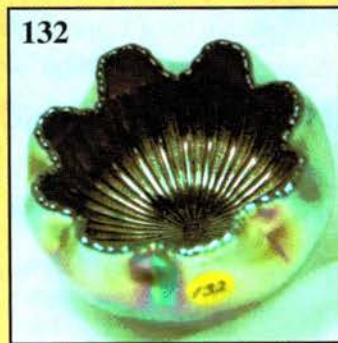
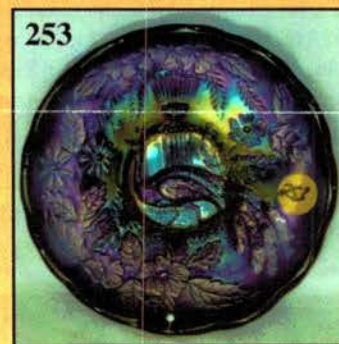
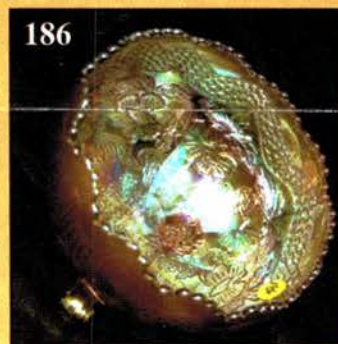
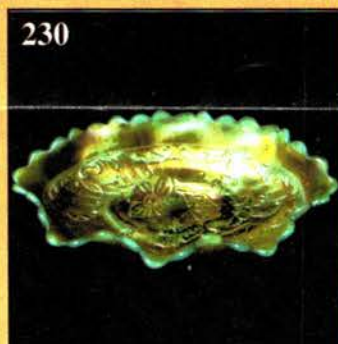
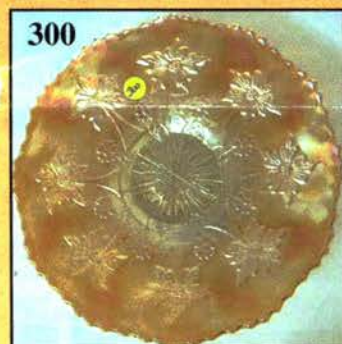
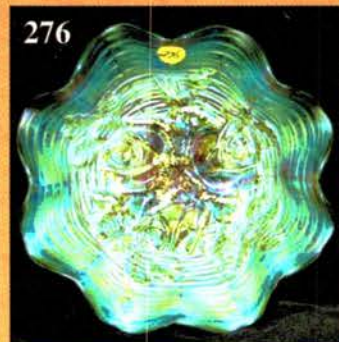
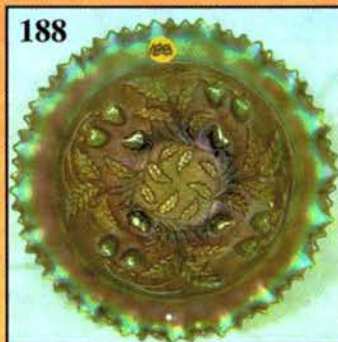
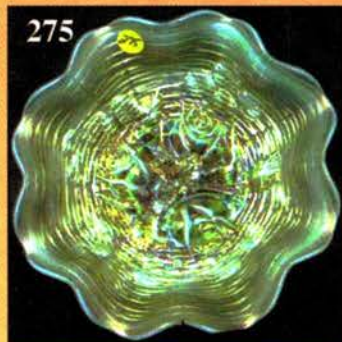


CARNIVAL GLASS AUCTION

Saturday, September 23, 2006 9:00 a.m.

DONNIE AND BONNIE CARROLL COLLECTION
(Selling due to Retirement & Health Reasons)



Held By the Mickey Reichel Antique & Auction L.C.
Office: 660-882-5292 • Home: 660-882-5283

NEW WEB SITE: www.AWK-SHN.com

E-mail: mreichel@AWK-SHN.com

Held Inside the Mickey Reichel Auction Center

1 Mile North of I-70 on Hwy. 5, Exit 101, Boonville, Missouri • 20 Miles West of Columbia, MO on I-70



Preview Friday 12 p.m. - 5 p.m. and 7:30 a.m. - 9:00 a.m. Day of Auction



TERMS: Cash or Good Check, VISA and MasterCard accepted.

4% Clerking Fee on all purchases except for payment of cash or check. Proper I.D. required.

WEB SITE: www.AWK-SHN.com

ABSENTEE BID POLICY:

WRITE IN BIDS: If you are unable to attend the auction, we will be happy to accept absentee bids which must be received by THURSDAY, SEPTEMBER 21, 2006. Don't Delay. **E-Mail: mreichel@AWK.SHN.com** ← ← ← ←

FOR AUCTION PRICE RESULTS: Send \$3.00 and Large S.A.S.E. to 18350 Hunters Ridge Ct., Boonville, MO 65233-2971

PLEASE NOTE: There is a **\$5 handling charge for each successful bid which will be added to the selling price** for all write-in bids. This is in addition to the cost of postage, insurance and packing. Your write-in bid will be entered just as if you are present and bidding. **Successful bidders will be notified in 1 to 3 days by the auctioneer (so be sure to include your phone number).** Direct mail bids to Auctioneer Mickey Reichel, 18350 Hunters Ridge Ct., Boonville, MO 65233-2971. Terms: Cash or Check accepted with proper I.D. and Social Security Number and References. Announcements made day of the auction supercede all printed material. Not Responsible for Accidents or Sold Items.

No return on any items once they leave the Auction Center (No Exceptions).****

Call for additional information: 660-882-5292 days or 660-882-5283 evenings before 9:00 p.m.

FAX: 660-882-5292 (evening hours start FAX transmission after beep)

MAIL BIDS: Items are bid on in perfect condition with average or above iridescence OR as listed in the brochures. Bids will not be carried out when damage on an item has been found during the auction.

PEOPLE PRESENT AT AUCTION ARE RESPONSIBLE FOR FINDING ANY PINHEADS, WEAR, SPOTTINESS, MANUFACTURER'S DEFECTS OR ANY OTHER MINOR FLAWS, ETC. *****

NOTE: Read each line, as we have accentuated the type of no particular piece, all are special.

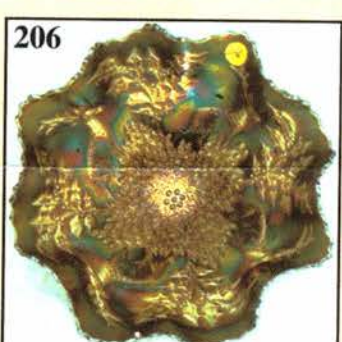
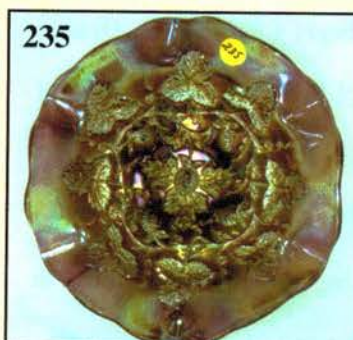
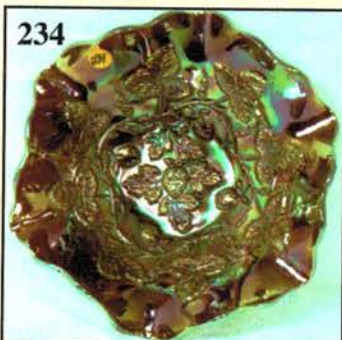
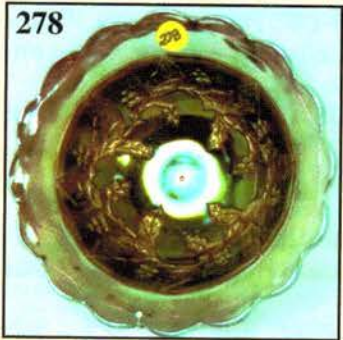
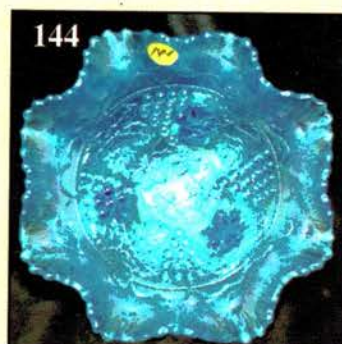
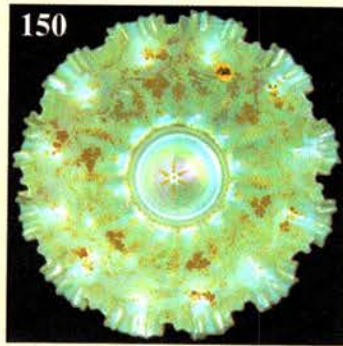
Make Reservations EARLY at one of these local motels:

Mention: Mickey Reichel Auction when calling the  Isle of Capri Casino Hotel: 660-882-1200
Days Inn: 660-882-8624 • Comfort Inn: 660-882-5317 • Super 8: 660-882-2900 • Holiday Inn: 660-882-6882

Auction Consists of Rarity, Great Irid. and Variety

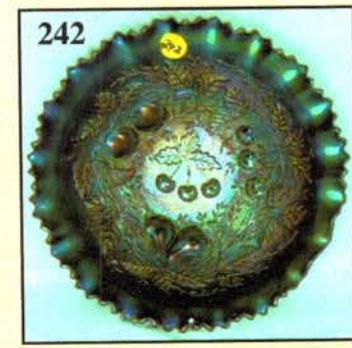
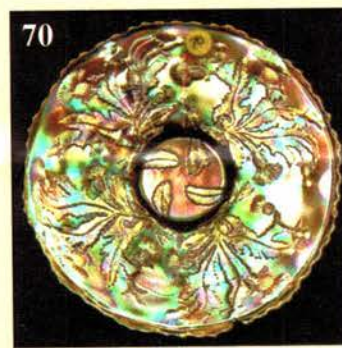
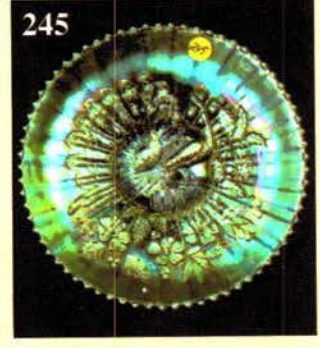
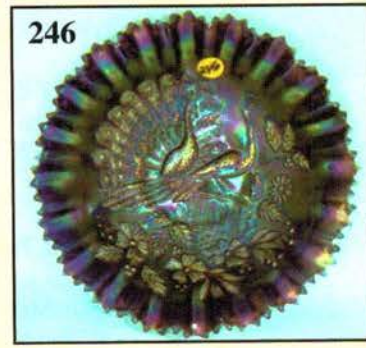
- | | |
|--|---|
| _____ 1. Dk. M - Blackberry Spray Ruffled Hat | _____ 14. M - Imperial, Crackle Wall Pocket - Scarce |
| _____ 2. Scarce M - Blackberry Spray Ruffled Hat -
2 Sets of Berries - Base Crack | _____ 15. M - Bird/Grapes, Lge. Wall Pocket |
| _____ 3. M - Fenton Holly Ruffled Hat | _____ 16. Dk. M - 7" Crackle Spittoon/Cuspidor -
Beautiful Example |
| _____ 4. B - Fenton Holly Ruffled Hat | _____ 17. P - Westmoreland - Louisa Ruffled Nut Bowl |
| _____ 5. M - 2 Row, O.E. 5" Ruffled Hat | _____ 18. Dk. M - Imp. Grape, 7 pc., Water Set -
Outstanding Example |
| _____ 6. G - 6-1/2" Fenton Stippled Rays Plate - 3 Sides
Up | _____ 19. B - Enameled Cherries, 7 pc., Water Set |
| _____ 7. P - Fenton Peacock Tail Ruffled Compote | _____ 20. P - N 7 pc. Grape/Cable Water Set - Extra Nice |
| _____ 8. G - 9", 6 Ruffle Peacock Tail Bowl | _____ 21. P - N 5 pc. Acorn/Burr Water Set |
| _____ 9. P - Blackberry Spray Ruffled Compote | _____ 22. Scarce P - Floral/Grape Bulbous Water
Pitcher |
| _____ 10. A - Fenton Butterfly Card Tray Bonbon | _____ 23. G - N Singing Birds Water Pitcher - Lots of Detail |
| _____ 11. Scarce P - Fenton, 10" CRE, Tri-Cornered Bowl | _____ 23A. G - Choice A, B or C Singing Birds Tumblers |
| _____ 12. M - Dugan Big Basketweave Handled Basket | _____ 24. Elec. P - Imp. Diamond Lace Water Pitcher |
| _____ 13. M - 9" Diamond/File Plate, Two Sides Up | |

- _____ 25. Elec. P - Imp. Diamond Lace Tumbler
- _____ 26. **A - Maple Leaf Tumbler - Real Beauty**
- _____ 27. M - N Grape Arbor Tumblers - A or B
- _____ 28. **M - 6", 6 Cornered US Glass, Field Thistle Plate - Little Rarity**
- _____ 29. M - 6-1/4" Pine Cone Plate - Great Irid.
- _____ 30. **Scarce A - 6-1/4", 12 Sided Pine Cone Plate**
- _____ 31. B - 6", 12 Sided Pine Cone Plate - Another Dandy
- _____ 32. **Scarce A - 6" Feathered Serpent Plate - 3 Sides Up**
- _____ 33. Fantastic W - 7" Persian Garden Plate - BW Exterior, Loaded w/Blues
- _____ 34. **Great B - 6-1/2" Cherry Chain Plate - Orange Tree Exterior**
- _____ 35. M - 9" Spat. Ftd. N Sunflower Bowl - Lots of Pinks/Blues
- _____ 36. **P - N PCE Strawberry Bowl, BW Exterior - Electric Irid.**
- _____ 37. Scarce P - N 7-1/4" Wild Strawberry Hand Grip Plate
- _____ 38. **Vaseline - Lotus/Grape (vt) Bonbon - Hard to Come By**
- _____ 39. Beautiful P - 6" Ruffled Blackberry O.E. Basket - Irid Plus
- _____ 40. **Honey Amber - US Glass, Cosmos/Cane Compote - Sides Straight Up**
- _____ 41. Outstanding M - Imp. 5" Propeller Compote
- _____ 42. **Fantastic Pastel M - Imp. Pansy Pickle Dish - Oval Shaped**
- _____ 43. Dk. M - Imp. Pansy Pickle Dish - Oval Shaped
- _____ 44. **Dk. Amber - Imp. Pansy Ruffled Pickle Dish**
- _____ 45. Pastel M - 9" Low Ruffle Imp. Grape Bowl
- _____ 46. **Dk. M - Deep 6-1/2" Round Imp. Grape Bowl**
- _____ 47. Rich M - 8" Deep Round Acanthus Bowl
- _____ 48. **Pumpkin M - Imp. 10-1/2" Round, Flared Lustre Rose, Ftd. Centerpiece Bowl**
- _____ 49. M - 9" Imp. Open Rose Plate - Colorful
- _____ 50. **Scarce G - 9-1/2" Imp. Scroll Embossed Plate - Pretty Pinks**
- _____ 51. Lime G - 6" Imp. Twins Ruffled Bowl - Neat Item
- _____ 52. **Radium Clambroth - 9-1/4" Low, Round Crabclaw Bowl**
- _____ 53. B - 9" Fenton 6 Ruffle Leaf Chain Bowl
- _____ 54. **M - 8" Tight CRE Heart/Vine Bowl - Scarce Shape**
- _____ 55. M - 8-3/4" Fenton Autumn Acorns 6 Ruffle Bowl
- _____ 56. **Pumpkin M - 10", 6 Ruffle Persian Medallion Bowl**
- _____ 57. B - 8" I.C.S. Persian Medallion Bowl - Rare Shape
- _____ 58. **M - 6-1/4" Persian Medallion Plate - Plain Exterior**
- _____ 59. Pastel M - 7-3/4" Lge., Two Row O.E. Blackberry Bowl - 2 Sides Up
- _____ 60. **G - 9-1/2" Fenton Three Fruits Plate - Seldom Seen**
- _____ 61. A - 9-1/4" Fenton Three Fruits Plate
- _____ 62. **Light M - 9", 3/1 Edge, Low Ruffled Ribbon Tie Bowl (Plate?)**
- _____ 63. Very Pretty M - Captive Rose, Card Tray Bonbon
- _____ 64. **M - 9-1/4" Captive Rose Plate - Scarce Color**
- _____ 65. Dk. M - 8-1/2", 3/1 Edge, Captive Rose Bowl - Another Pretty One
- _____ 66. **A - 8-3/4", 3/1 Edge, Fenton Vintage Grape Bowl - Scarce Shape**
- _____ 67. M - 8-3/4", 3/1 Edge, Fenton Vintage Grape Bowl
- _____ 68. **Pretty B - 9", 6 Ruffle Fenton Vintage Grape Bowl**
- _____ 69. A - 10-1/4", 6 Ruffle Little Flowers Bowl
- _____ 70. **Ultra Rare M - 9-1/4" Fenton Thistle Plate - Chip on Upper Collar Base - 3 or 4 Known, Beautiful Example**
- _____ 71. M - 8" Tight, C.R.E., Fenton Thistle Bowl - Neat Shape
- _____ 72. **Pretty M - 8-3/4", 6 Ruffle Thistle Bowl**
- _____ 73. G - 8-3/4", 6 Ruffle Thistle Bowl - Extra Nice
- _____ 74. **B - 8-3/4", 6 Ruffle Thistle Bowl**
- _____ 75. M - Kittens Toothpick Holder ?, Vase w/2 Sets Kittens
- _____ 76. **Dk. M - Kittens, 4-1/4" Ruffled Bowl w/2 Sets Kittens**
- _____ 77. M - 4-1/2" Kittens, Banana Dish or Card Tray Shape
- _____ 78. **Rare Powder B - Pastel, 4-1/2" Kittens Card Tray**
- _____ 79. Dk. M - Kittens, 4-1/2" Four Ruffle Bowl
- _____ 80. **Scarce B - 4-1/2" Kittens, 6 Ruffle Bowl - Nice One**
- _____ 81. Rare PO - Miniature 4", 4 Ruffle Flower Basket Bowl
- _____ 82. **Rich M - Fenton Daisy Cut Bell - Top Notch Example**
- _____ 83. Flashed M - Sad Dog Candy Container
- _____ 84. **Flashed M - 3-3/4" Tall Cordial/Wine?**
- _____ 85. Flashed M - 2" Tall Park Avenue Shot Glasses, 2 x \$
- _____ 86. **Rare Aqua Opal - 5-1/2" Smooth Panel, Tri Corner, Spittoon Whimsey**
- _____ 87. Clam - 6" Dugan Stippled Estate Pinched Vase
- _____ 88. **M - Lattice Band, Violet Basket - Very Difficult to Find**
- _____ 89. Smoke - Imp. Grape 9-1/2" Tall Handled Basket
- _____ 90. **M - N #643 Pattern, Covered Jelly/Bonbon - Rare Color**
- _____ 91. Black Amethyst - Dugan Beaded Basket - No Irid.
- _____ 92. **Lav. Tint - Imp. 9" Ruffled Pansy Bowl**
- _____ 93. Dk. M - 5-1/2" Optic/Buttons Rosebowl
- _____ 94. **P - 9" Imp. Flute Master Berry Bowl**
- _____ 95. P - 4-3/4" Round Imp. Flute Berry Dishes - 2 x \$
- _____ 96. **Dk. Radium M - Imp. Hobstar/Flower Ruffled Compote**
- _____ 97. Radium M - 11-1/2" Mlbg. Four Pillars Vase - 4" Starred Base
- _____ 98. **Great Pumpkin M - N 9" Tree Trunk Vase - Extra, Extra Nice**



- _____ 99. Radium W - 11" N Tree Trunk Vase - Neat Find
- _____ 100. **Ultra Rare Yellow Vaseline Opal - 10-1/4" Fenton, Fine Rib Vase - One or Two or Three!**
- _____ 101. Elec. P - 10-1/2" Imp. Flute Vase, 5-1/4" Opening
- _____ 102. **Sapphire Blue - N 11-1/4" Thin Rib Vase, 4-3/4" Opening - Another Rarity**
- _____ 103. BA - Dugan 10-3/4" Lined Lattice Vase - Multi Electric
- _____ 104. **Aqua Base - 9" Fenton Fine Rib Vase - Seldom Seen - Soft Irid.**
- _____ 105. A - 9-1/2" Diamond/Rib Vase
- _____ 106. **Beautiful M - N 7-3/4" Drapery Vase**
- _____ 107. W - Imp. 7-3/8" Morning Glory Bud Vase
- _____ 108. **P.O. - 5-3/8" Squatty Target Vase, 3-5/8" Base, 6-1/4" Opening**
- _____ 109. Crystal - 6-1/4" Dugan, S Repeat Celery Vase w/Gold Trim
- _____ 110. **A - Dugan 9-1/4" Twigs Vase - Scarce & Pretty**
- _____ 111. RED - 10-3/4" Fenton Fine Rib Vase - A Dandy
- _____ 112. **Clear Base - 7-1/2" Imp. Morning Glory Vase - Clam Top**
- _____ 113. P - N 10" Leaf Columns Vase - Multi Electric
- _____ 114. **Scarce B - Dugan 8-1/4" Lattice/Points Vase w/Daisy Inside**
- _____ 115. BA - 10-1/2" Lined Lattice Vase - Electric
- _____ 116. **Rich M - Imp. 15-1/2" Ripple Vase, 3-7/8" Base, 5" Opening**
- _____ 117. P - N 10-1/2" Tree Trunk Vase
- _____ 118. **M - N Flute Pattern, 12-3/4" Tall, 4-1/4" Base, 5" Opening - Unusual**
- _____ 119. G - 10" April Showers Vase - Peacock Tail Interior
- _____ 120. **P.O. - Dugan 11-1/2" Spiralex Vase, 3-3/4" Base, 3-1/2" Top**
- _____ 121. Pretty M - 11-3/4" Fentons, Two Fifty One Vase - Scarce Item
- _____ 122. **M - 16-1/4" Back, 11" Front, Imp. Ripple Vase - 3-7/8" Base, 7" Fan Top - Super Neat**
- _____ 123. Rich Smoke - 7-1/4" Imperial Swirl Vase
- _____ 124. **Scarce A - 6" Dugan Stippled Estate Pinched Vase - Really Nice**
- _____ 125. M - 10" Butterfly/Berry Vase
- _____ 126. **G - N 10-3/4" Diamond Point Vase - Richly Iridized**
- _____ 127. Lav. - N 10-3/4" Diamond Point Vase - Dandy Find
- _____ 128. **Rich M - N 6" Tall Tornado Vase - Loaded w/Irid.**
- _____ 129. Light M - Cornucopia, 5" Vase
- _____ 130. **Rare White - 10-3/4" Cherry Chain Chop Plate - 3 Marie Chips, Fantastic Irid.**
- _____ 131. P - Imp. Lustre Rose Butter Dish w/Lid - Base Edge Chipped - Elec. Beauty
- _____ 132. **Very Rare P - N Stippled Rays Rosebowl - A Couple Known**
- _____ 133. G - N Wild Rose Nut Bowl
- _____ 134. **Elec. B - N Grape/Cable Bonbon**
- _____ 135. Lav. - 9-1/4" Imp. Grape, Low Ruffled Bowl/Plate?
- _____ 136. **Radium A - 7-1/2" Fenton Vintage Grape Plate - Extra Nice**
- _____ 137. W - Stretch 11" Floral Optic Ftd. Cake Plate
- _____ 138. **Crystal - N Memphis Whiskey Decanter w/Stopper**
- _____ 139. Lge. Crystal - N 12", 8 Ruffle Memphis Low Bowl
- _____ 140. **W - 8-3/8" Brocaded Summer Garden Compote**
- _____ 141. Lav. - 7" Brocaded Acorns, Two Handled Plate
- _____ 142. **Lav. - 5-1/2" Brocaded Acorns, Two Handled Two Inch Deep Bowl**
- _____ 143. Renniger B - 9-3/8" Flared Imp. Open Rose Bowl - Really Unusual
- _____ 144. **Celeste Blue - 8-1/2" Sq., 8 Ruffle, Ball Ftd., Grape/Cable Fenton Bowl - Extremely Desirable Color**
- _____ 145. Teal - Stretch 8-3/8" Plate - 14 Panels on Reverse
- _____ 146. **Topaz, Vaseline Stretch - 7-1/2" Pr. of Candlesticks - Pattern Unknown**
- _____ 147. Vaseline IG Pastel - Swan Salt
- _____ 148. **A - 5-1/2" Round Peacock Tail Berry Bowl**
- _____ 149. G - 5" Round Feathered Serpent Berry Bowl
- _____ 150. **Spectacular W. Opal Pearl - 12-1/2", CRE, 12 Ruffle Aurora Pearls Brides Bowl - Super Item**
- _____ 151. M - 5-1/2" Ftd., Ruffled Waterlily Berry Bowl
- _____ 152. **Scarce Dugan Blue - Flat 9" Round Up Plate**
- _____ 153. P.O. - 8-3/4" Flat Dugan Fanciful Plate - Approx. One Inch Opal
- _____ 154. **Radium B - 7-1/2" Brockwitz-Eda, Rose Garden Pillow Vase - Highly Desired**
- _____ 155. Rich Radium M - 7-1/2" Brockwitz-Eda, Rose Garden Pillow Vase - Another Rarity
- _____ 156. **Emerald G - N Spat. Ftd., Sunflower Ruffled Bowl**
- _____ 157. G - N 9" Ruffled Strawberry Bowl - BW Ext. w/ Green Irid.
- _____ 158. **Purple - N P.C.E. Stippled 3 Fruits Bowl - BW Ext. - Elec. Hilites**
- _____ 159. P - N 8-1/2", 8 Ruffle Stippled 3 Fruits Bowl - Rib Ext. - Scarce
- _____ 160. **Rare Aqua O - 8-3/4", Collar Base, Ruffled, Stippled 3 Fruits Bowl**
- _____ 161. Rich M - Dome Base, 8-3/4" N 3 Fruits Medallion Bowl - Dandy
- _____ 162. **Dk. A - Dome Base, 8-3/4" N 3 Fruits Medallion Bowl - Pretty**
- _____ 163. P - N 9", 3 Fruits Plate, BW Ext. - Extra Nice
- _____ 164. **P - N Grape/Cable Hatpin Holder**
- _____ 165. G - N Ftd., Daisy/Plume Rosebowl w/Rayed Interior
- _____ 166. **Pastel Aqua O - N Beaded Cable Rosebowl - Lots of Pinks**
- _____ 167. P - N Grape/Cable Bonbon
- _____ 168. **G - Spat. Ftd. N Ruffled Sunflower Bowl**
- _____ 169. G - N Wild Rose 7-1/4" Ftd. Bowl

- _____ 170. **Scarce P - N Ruffled Good Luck Bowl - BW Ext.**
- _____ 171. Great M - **N Ruffled Good Luck Bowl - Rib Ext. w/Pinks**
- _____ 172. **Extra Nice M - N Flat 9-1/4" Good Luck Plate - BW Ext.**
- _____ 173. Elec. P - **N Ruffled Good Luck Bowl w/Rib Ext.**
- _____ 174. **Elec. B - N Ruffled Good Luck Bowl w/Rib Ext.**
- _____ 175. Rare Renniger B - **N stippled Good Luck Ruffled Bowl w/Rib Ext. - Color Plus**
- _____ 176. **Beautiful B - Orange Tree Powder Jar w/Lid**
- _____ 177. B - 8-1/2", 6 Ruffle Orange Tree Bowl - Nice
- _____ 178. **Pumpkin M - 8" I.C.S. Orange Tree Bowl**
- _____ 179. M - Fenton Flowers Ftd. Rosebowl
- _____ 180. **B - 7-3/8" Fenton Vintage Grape Plate**
- _____ 181. Rich Clam - 9-3/8" Orange Tree Plate - Extra Nice
- _____ 182. **W - 9" Dugan Fanciful Plate - Blue/Pink Tints**
- _____ 183. G - 8-1/2", 8 Ruffle Persian Medallion Bowl - Scarce Color & Size
- _____ 184. **Pretty M - Collar Base, Flat, 9-1/2" Peacock/Grape Plate**
- _____ 185. M - 8-3/4" Sq. 8 Ruffle Two Flowers Bowl - Rare Collar Base
- _____ 186. **Outstanding Rarity M - Giant 2 Flowers Rosebowl**
- _____ 187. M - 9" Fantail Round Ftd. Centerpiece Bowl - Pinks/Blues
- _____ 188. **Very Scarce G - N, P.C.E. Stippled Strawberry Bowl - BW Ext.**
- _____ 189. Thin Base M - **N P.C.E. Stippled Strawberry Bowl - Rib Ext.**
- _____ 190. **W - N 8-3/4" Ruffled Nippon Bowl - Scarce BW Ext.**
- _____ 191. M - **N Collar Base Stippled 3 Fruits Bowl - Another Favorite**
- _____ 192. **Pretty B - N Hearts/Flowers Ruffled Compote - Elec. Center**
- _____ 193. Pumpkin M - **N, Stippled, Singing Birds Mug**
- _____ 194. **Crystal/M - 20" Tall Elec. Table Lamps - 2 x \$**
- _____ 195. Rare G - **N Small Grape/Cable Punchbowl w/Base - Super Emerald Highlites w/Magenta Irid.**
- _____ 196. **Pretty G - N Grape/Cable Punch Cup**
- _____ 197. G - **N Grape/Cable Punch Cups, Ave. Color - 7 x \$**
- _____ 198. **Pretty M - N Small Size, Grape/Cable, 8 pc. Punch Set**
- _____ 199. Frosty A - **N, Small Grape/Cable Punchbowl w/Base and 5 Cups - Neat Set**
- _____ 200. **P - N Small Size Grape/Cable Punchbowl w/Base**
- _____ 201. Beautiful M - Imp. Fashion Punchbowl w/Base & 6 Cups
- _____ 202. **P - Dugan - Many Fruits Punch Cups - 5x\$ (6th free w/Crack)**
- _____ 203. Dk. Radium M - Imp. Twins Fruit Bowl w/Base
- _____ 203(a). P - **N 10-3/4" Ruffled Grape/Cable Master Berry Bowl w/6 Small Berry Bowls - Rare Set**
- _____ 204. **Radium M - Fenton Thistle Banana Bowl**
- _____ 205. Dk. M - 10-3/4" Ftd., ICS Stag/Holly Bowl
- _____ 206. **Blue - 10-3/4" Ftd. 8 Ruffle Stag/Holly Bowl - A Beauty**
- _____ 207. Dk. M - 10-3/4" Ftd. 8 Ruffle Stag/Holly Bowl - Above Average
- _____ 208. **Scarce G - Fenton Plain Int., Ftd. 10" Grape/Cable Fruit Bowl**
- _____ 209. M - Lge., Ftd., Orange Tree Orange Bowl - Hot Pinks
- _____ 210. **Rare M - 9" Turned Up Edge Fenton Plaid Plate**
- _____ 211. Pretty M - 9-1/2" Fenton Holly Plate
- _____ 212. **W - 9-3/4" Fenton Holly Plate - Loaded w/Blues**
- _____ 213. Dandy B - 9-1/4" Fenton Peacock/Urn Plate
- _____ 214. **Scarce A - 8-3/4" Fenton Ruffled Peacock/Urn Bowl**
- _____ 215. Lovely M - 8-3/4" Fenton Peacock/Urn Bowl
- _____ 216. **Soft Blue Base - 8-3/4" Fenton Peacock/Urn Bowl**
- _____ 217. Rich M - 7-3/4" Ftd., 8 Ruffle Horse Medallion Bowl - Great Pattern
- _____ 218. **Scarce G - 7-3/4" Ftd. 8 Ruffle Horse Medallion Bowl**
- _____ 219. Soft M - Horse Medallion Ftd. Rosebowl
- _____ 220. **B - 8-3/4" Tight CRE, Ribbon Tie Bowl - Scarce & Electric**
- _____ 221. Lav. - Peacock/Grape 8" Ruffled Spat'd. Ftd. Bowl
- _____ 222. **Deep B - 8-7/8" Round, Low, Float Bowl Shape, Peacock/Grape Bowl**
- _____ 223. A - 9", Sq. 8 Ruffled Peacock/Grape Collar Base Bowl
- _____ 224. **Deep B - 9" Ruffled Dragon/Lotus Bowl - w/Marigold Overlay**
- _____ 225. Pinkish - 8-3/8" ICS Dragon/Lotus Bowl
- _____ 226. **Pretty M - Butterfly/Berry Spooner**
- _____ 227. A - 10-1/4" Ruffled Feathered Serpent Bowl - Rim Nick
- _____ 228. **Rare Sapphire - N Leaf/Beads Rosebowl w/Sunflower Int.**
- _____ 229. Sapphire - 5-1/2" Ruffled, 2 Row, O.E. Basket - 1-7/8" Base
- _____ 230. **Pastel Aq. Opal - Ice Blue? - N Ruffled Poppy Pickle Dish - A Great Rarity Either Way**
- _____ 231. Magnificent P - **N 9" Grape/Cable (Vt.) Plate w/Plain Ext.**
- _____ 232. **Pastel, Light B - N 10-1/2" I.C.S. Grape/Cable Bowl - BW Ext. - Extraordinary Item**
- _____ 233. Super Ice Blue - **N, P.C.E. Hearts/Flower Bowl - Difficult to Find**
- _____ 234. **A - Mlbg. 10-1/2", 6 Ruffle Blackberry/Wreath Bowl - Super Radium**



- _____ 235. P - Radium Mlbg. 9", 6 Ruffle Blackberry Wreath Bowl
- _____ 236. **A - Mlbg. 8" ICS, Blackberry Wreath Bowl - Neat Size**
- _____ 237. G - Mlbg. 9-3/4" Ruffled Rays/Ribbons Bowl - 3/1?
- _____ 238. **Spectacular P - 7-3/4" Flared, Scalloped, Rnd. (Mlbg.) Holly Sprig Bowl - Unusual**
- _____ 239. Radium P - Mlbg. 9-1/2" Rnd., Flared Out Peacock/Urn Bowl
- _____ 240. **Ultra Rare G - Mlbg. Morning Glory Tumbler - From Local Find, WOW!**
- _____ 241. Soft A - Mlbg. 5-1/2" I.C.S. Peacock Bowl - No Bee, No Beads - 7 Tail Feathers
- _____ 242. **P - PCE N Stippled 3 Fruits Bowl - Rib Ext., Multi Elec.**
- _____ 243. Soft M - N Stippled 3 Fruits Plate - Rib. Ext.
- _____ 244. **Beautiful M - N 9-1/8" Peacocks Plate - Rib Ext.**
- _____ 245. IG - Pastel, N 9" Peacocks Plate - Rib Ext.
- _____ 246. **Scarce B - N, PCE Peacocks Bowl - Rib Ext.**
- _____ 247. M - N, PCE Peacocks Bowl - Loaded w/Pinks
- _____ 248. **P - N Ruffled Peacocks Bowl - Scarce BW Ext.**
- _____ 249. B - N, PCE Peacocks Bowl - Tip Chipped - Still Scarce Color
- _____ 250. **P - N Peacock/Urn, 7 pc., Ice Cream Set - Seldom Seen as Set**
- _____ 251. M - 5-7/8" Low N Peacock/Urn Bowl/Plate?
- _____ 252. **Frosty W - 5-5/8" ICS, N Peacock/Urn Bowl**
- _____ 253. Gorgeous, Elec. B - N 5-5/8" ICS Peacock/Urn Bowl - Super
- _____ 254. **Rich Ice B - PCE, N Nippon Bowl - Rib Ext. Loaded w/Irid.**
- _____ 255. Dk. Ice B - N 6-3/4" Drapery Tri Cornered Bowl - Dandy
- _____ 256. **Dk. Ice G - N 7-1/4" Drapery Vase - Normal Toe Chip**
- _____ 257. Magnificent W - 7-1/4" Squatty Dugan Target Vase - 3-3/4" Base, 5-1/2" Tulip Top
- _____ 258. **Great W - Dugan, Puzzle Banana Boat Shape Bonbon - Beautiful Pastel**
- _____ 259. W - Dugan 7" Low Ruffle Grapevine Lattice Bowl/Plate?
- _____ 260. **Peach Opal - Dugan 9-1/2", 6 Ruffle Flowers/Spades Bowl - Very Rare Item**
- _____ 261. M - Dugan, Puzzle Banana Boat Shape Bonbon
- _____ 262. **M - Dugan 6 Ruffle Pony Bowls - Choice A or B**
- _____ 263. P.O. - 8-3/4", 3/1 Crimp Raindrops Bowl - Loaded w/Opal
- _____ 264. **P.O. - 7-1/2" Ski Star/Compass, Deep, 10 Ruffle Nut Bowl - Full Opal Back**
- _____ 265. P.O. - 9" C.R.E. Smooth Ray Interior (Caroline Ext.) Bowl
- _____ 266. **BA - Dugan 9-3/4" Banana Shape, stippled Petals Bowl - Electric Beauty**
- _____ 267. Beautiful M - PCE, N 3 Fruits Bowl - BW Ext.
- _____ 268. **Elec. P - N Fruits/Flowers Stemmed Bonbon**
- _____ 269. G - N Ftd. Ruffled Wishbone Bowl - Nice Find
- _____ 270. **Scarce G - N Stippled Grape/Cable Bonbon**
- _____ 271. Pretty G - N P.C.E. Grape/Cable (Vt.) Bowl - Plain Ext.
- _____ 272. **M - N Ftd. Wishbone Bowl - Very Pretty**
- _____ 273. Dk. M - N 8-3/4" Strawberry Plate - Smooth Ext.
- _____ 274. **G - N Ftd. 8-1/2" Daisy/Plume Bowl w/Rayed Interior**
- _____ 275. Fantastic IG Opal - N Ruffled Rose Show Bowl - Yes - It's Ice Green Opal - Great Rarity
- _____ 276. **Beautiful G - N Ruffled Rose Show Bowl - Great Emerald & Pink Highlights**
- _____ 277. B - 9" Fenton 8 Ruffle Vintage Grape Bowl - Real Winner
- _____ 278. **Deep B - J.I.P., Ftd. Horse Medallion Bowl - Dandy Pattern**
- _____ 279. RED - 6" ICS Stippled Rays Fenton Bowl - Interior Wear
- _____ 280. **Dk. Amber - Fenton 7-1/2", 8 Ruffle Grape/Cable Bowl - Overlooked Color**
- _____ 281. M - 8-1/2", 6 Ruffle Dugan Pony Bowl
- _____ 282. **P - Dugan Stemmed, Lge. Mapleleaf Master Bowl - Difficult to Find**
- _____ 283. P - Beaded Shell Mug - Pretty Silver Finish
- _____ 284. **BA - Dugan Wreath Cherry Banana Bowl - Radium Silver Int.**
- _____ 285. M - 8", Rnd., Dugan Double Stem Rose Bowl
- _____ 286. **M - 9-3/4", 6 Ruffle Cosmos Vt. Bowl**
- _____ 287. M - 7", 8 Ruffle Dugan Apple Blossoms Bowl
- _____ 288. **M - Hen/Chickens Covered Dish**
- _____ 289. B - Garland Rosebowl
- _____ 290. **Scarce A - Fenton Vintage Fernery Bowl**
- _____ 291. BA - Grape Delight Nut Bowl - Chip on Foot
- _____ 292. **BA - Grape Delight Ftd. Rosebowl**
- _____ 293. M - Grape Delight, Ftd. Rosebowl - Round Opening
- _____ 294. **Powder B - 5" Wreath Rose, Tri Corner Whimsey Bowl - Base Nick**
- _____ 295. RED - Dugan 6-1/4" Lustre Rosebowl
- _____ 296. **Lustre RED - Dugan Console Bowl w/Matching Candlesticks**
- _____ 297. Extremely Scarce PO - Dugan 10" Low, 8 Ruffle Garden Path Vt. Bowl
- _____ 298. **G - Imp. 11" Heavy Grape Chop Plate - Pink/Purple Irid.**
- _____ 299. Pumpkin M - Imp. Poinsettia Milk Pitcher
- _____ 300. **Rare M - 10-1/2" Little Flowers Chop Plate w/Pink Hilites**
- _____ 301. Frosty W - Apple Tree Tumbler
- _____ 302. **Very Scarce G - Butterfly/Berry Tumbler - Lots of Pinks & Blues**
- _____ 303. P - Milady Fenton Tumbler - Fine Example
- _____ 304. **G - Floral/Grape Tumbler - Beautiful Rarity**
- _____ 305. P - Diamond/Lace Tumbler - Elec. Irid.
- _____ 306. **P - Imp. Lustre Rose Tumbler - Rib Interior**
- _____ 307. B - Dugan Peacock/Fountain Tumbler
- _____ 308. **Beautiful B - N Peach Tumbler**

- _____ 309. B - Radium Western Thistle Tumbler - Exceptional
- _____ 310. M - Mlbg. - Marilyn Tumbler - Very Desirable
- _____ 311. Dugan Blue - Beaded Shell Tumbler
- _____ 312. M - Harvest Flower Tumbler - Radium & Scarce
- _____ 313. Pretty B - Stork/Rushes Beaded Tumbler
- _____ 314. Lav. Horehound - Maple Leaf Tumbler - Beautiful & Unusual
- _____ 315. Rare A - 9-1/4" Birmingham Age Herald Plate - Lge. Crack
- _____ 316. Elec. P - Imp 9-1/2", 8 Ruffle Diamond Lace Bowl
- _____ 317. Clambroth - 9-1/4" Leaf Chain Plate
- _____ 318. B - 7-1/2" Leaf Chain Plate - Beautiful & Scarce Size
- _____ 319. B - Spat. Ftd. 9" Grape/Cable Plate
- _____ 320. G - 9-1/4" Spat. Ftd. Grape/Cable Plate - Flat & Pretty
- _____ 321. Clambroth - 9-1/2" Orange Tree Plate
- _____ 322. Fantastic RED - Spat. Ftd. 8", 8 Ruffle Peacock/Grape Bowl
- _____ 323. Beautiful G - 9-1/2", 8 Ruffle, Ftd. Butterfly/Berry Master Bowl
- _____ 324. M - 9-1/4" Captive Rose Plate - Extra Nice
- _____ 325. Scarce G - 9-1/8" Lotus/Grape Plate - High Quality
- _____ 326. P - N 13-1/4" Mid Size Tree Trunk Vase - 4-5/8" Base, 6" Opening
- _____ 327. Clam - Frosted Block Milk Pitcher
- _____ 328. Crystal Irid. - 5" Frosted Block Compote
- _____ 329. RED Slag - 7-1/2" Flat Rolled Edge Bowl - Non Irid.
- _____ 330. RED w/Gold Slag - 8-1/2" Flat Rolled Edge Bowl - Non Irid.
- _____ 331. M - Heavy Diamond Breakfast Cream/Sugar
- _____ 332. M - Heavy Diamond 4-3/4" Round Nappy
- _____ 333. M - 6" Round, Heavy Diamond Bowl
- _____ 334. M - 7-1/2" Round, Flared Heavy Diamond Bowl
- _____ 335. P - N Fruits/Flowers Stemmed Bonbon
- _____ 336. G - N Daisy/Plume 8-1/4" Ftd. Bowl
- _____ 337. M - Question Mark Handled Compote
- _____ 338. M - 6" Ruffled Fish Scale & Beads Bowls - 2 x \$

- _____ 339. M - Pr. of Crackle Candlesticks
- _____ 340. P - 6" Ruffled Persian Medallion Bowl
- _____ 341. G - N 7-1/4" Thin Rib (Vt.) Vase - Alaskan Effect
- _____ 342. Ice B - Fine Cut/Roses Rosebowl - Fancy Inter., Toe Chip
- _____ 343. Smoke - 9-1/4" Round, Imp. Grape Bowl - Chip on Tip
- _____ 344. M - 7-1/2" Round, Ball Ftd. Grape/Cable Bowl
- _____ 345. P - N Smooth Ray Bonbon
- _____ 346. PO - 7", 10 Ruffle Single Flower Bowl - Faded
- _____ 347. M - 5-3/4", 8 Ruffle Imp. Grape Bowl
- _____ 348. M - 2-1/4" Flower Frog
- _____ 349. RED - Contemporary, 1977, HOACGA Hat Pin Holder w/White Carnival Button
- _____ 350. Ice G - Contemporary LIG, Imp. Lustre Rose Butter Dish
- _____ 351. W - Stock Toothpick Holder
- _____ 352. Choice Bundle of Wire Bowl Holders (18 Groups)

SEND ALL MAIL TO:

18350 Hunters Ridge Ct.
Boonville, MO 65233

👉 AUCTION CALENDAR OF EVENTS

WATCH WEB SITE FOR
Huge Post Card &
Stereo View Card Collection

Friday, October 13 @ 6:30 pm and
Saturday October 14 @ 9:00 am
The 25th Air Capital Carnival Glass
Convention - Held in Wichita, Kansas

Saturday, October 28 @ 9:00 a.m. and
Sunday, October 29 @ 9:00 a.m.
at Boonville, MO
1400 Pc. Hull Pottery Collection
(The Bennett Collection)

Saturday, November 4 @ 9:00 a.m.
at Boonville, MO
Carnival Glass Collection from Alabama

👉 **Booking NOW!** for 2007 Calendar Year
Carnival Glass and Antiques

SPECIAL NOTE:

NO SUNDAY CALLS, PLEASE!
Winning Absentee Bidders will be contacted
Monday through Wednesday of the week following
the Auction!

Thank You!

WATCH: 👉 Web Site: www.AWK.SHN.com

www.AWK-SHN.com
MICKEY REICHEL
ANTIQUÉ & AUCTION, L.C.
18350 HUNTERS RIDGE CT.
BOONVILLE, MO 65233

PRESORTED
FIRST CLASS MAIL
US POSTAGE PAID
SEDALIA, MO
PERMIT 217

FIRST CLASS MAIL
SPECIAL INVITATION TO:

RETURN SERVICE REQUESTED

240



7*87*****MIXED AADC 650

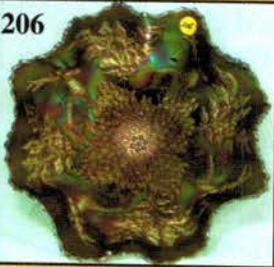
LEE MARKLEY

PO BOX 306

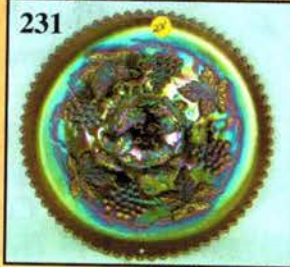
MENTONE, IN 46539-0306



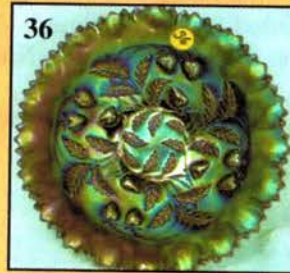
206



231



36



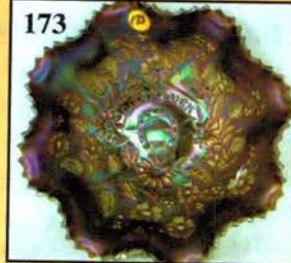
218



298



173



174



157



48



301, 302, 303, 304, 305
306, 307, 308, 309, 310
311, 312, 313, 314, 25



75, 76, 77, 78
79, 80, 81

258

