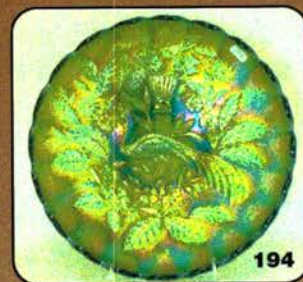
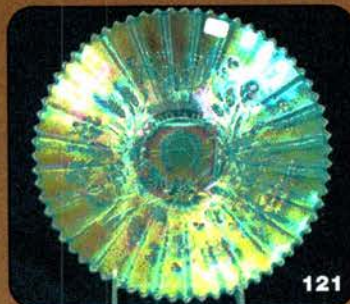
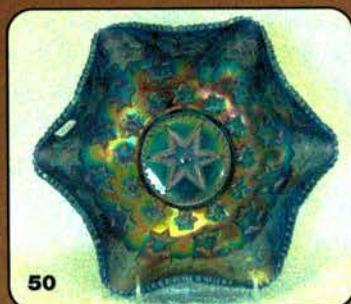
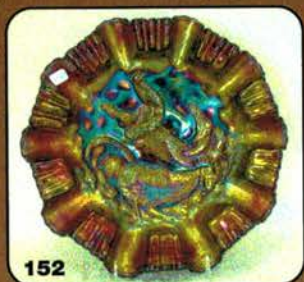


AUCTION



Outstanding Carnival Glass
Saturday, September 9th, 2006 - 9:00 A.M.
Gary and Donna Braden Collection



Holiday Inn - Wentzville
900 Corporate Parkway (Exit 212a off of I-70)
Wentzville, Missouri

For Reservations call: 636-327-7001

Jim and Jan Seeck

Seeck Auctions
ICGA Convention Auction

644-424-1116

Outstanding Carnival Glass Auction

Saturday, September 9th, 2006 -- 9:00 A.M.

Holiday Inn – Wentzville, Missouri

(Preview: Friday, September 8th – 3 pm)

NO BUYER'S PREMIUM

Seeck Auctions is pleased to be selling at auction the Carnival Glass collection of Gary and Donna Braden from South Carolina. Gary and Donna are super people and one of the first couples I met when starting out in Carnival Glass. They have been very active in the ICGA club and have put together a super collection. Their collection is loaded with overall fantastic glass. It is well rounded with rarities and beautiful glass from every maker. Notice that we are starting a littler earlier because the sale is almost 500 lots.

Reservations can be made by calling the hotel directly at 636-327-7001. Please mention the "Seeck Auction" for a room rate of \$65.00.

Don't forget to check out our website for lots of pictures!

www.seeckauction.com

Also, please email us and we will put you on our email mailing list for auction notices.

Terms: Cash or Check, VISA and MasterCard accepted w/proper ID. 3% Clerking Fee on all purchases except for payment of cash or check. Announcements made day of sale take precedence over any printed information.

LIVE PHONE BIDDING POLICY

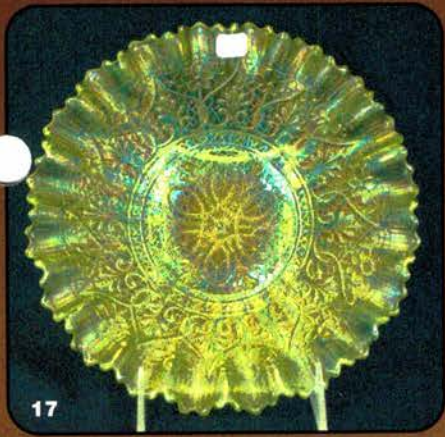
1. If you would like to participate in live phone bidding, contact us by the **Tuesday** before the auction (Sept. **5th**).
2. We will need to know the lot# and the phone number that you can be reached at the day of the auction.
3. We will also need your home phone number if different than number provided in #2.
4. There will be a \$5 fee per lot for all phone bidding if successful **or not**.
5. We will only have 2 phone lines available at the auction, so if more than 2 bidders are interested in the same lot, we will contact you before the auction and the highest 2 absentee bidders will be the ones to be called.
6. Shipping, Insurance & \$5.00 fee will be charge on each successful bid.
7. Please call with questions. 641-424-1116.

ABSENTEE BID POLICY

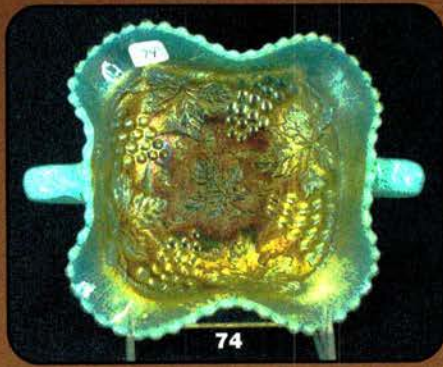
1. Write-in bids will be accepted by sending the numbers of the item(s) desired and the amount bid on each to:
Seeck Auctions, PO Box 377, Mason City, Iowa 50402.
2. You may telephone your bids in previous to the sale. (641)424-1116.
3. You may **email** your bids to us: **jimjan@seeckauction.com** Continue to include the numbers of the item(s) you would like to bid on and amount bid on each, please include your telephone number.
4. There is a \$5 handling charge for each successful bid. Shipping and insurance charges are additional.
5. Bidders will be notified by phone/email if their bid(s) are successful. This will be done 1 - 3 days after the auction.
6. Please have all bids in by **Tues., Sept. 5th**. All bids (by mail, phone or **email**) after this date may not be carried out.
7. Please place bids in the following increments: \$1 to \$300 - \$5 increments \$300 up - \$25 increments.
8. **If you do not receive an item that sold for less than your bid, assume we cancelled your bid because the piece of glass had below average color, manufacture problem, damage or was not listed correctly.**
9. Auction results are posted on our website within 5 days of the auction (depending on drive time home from the sale.)

- ___ 1. Stippled Rays 6" plate - marigold
 ___ 2. Luster Rose tumbler - purple - nice
 ___ 3. Milady tumbler - amethyst - nice
 ___ 4. Milady tumbler - marigold
 ___ 5. Flute toothpick - purple - nice
 ___ 6. Flute toothpick - green
 ___ 7. Flute toothpick - marigold
 ___ 8. Leaf Rays spade shaped nappy - purple - Neb. Souvenir
 ___ 9. Leaf Rays spade shaped nappy - white
4000 ___ 10. Rustic 6" whimsey jardiniere - blue - only one I know of, made from the funeral vase mold, flared out w/fantastic irid., a top piece, crack in base
 ___ 11. Question Mark crimped edge compote - marigold
 ___ 12. Drapery rose bowl - ice blue - very rare, pretty
 ___ 13. Drapery rose bowl - aqua opal - super opal & irid.
 ___ 14. Drapery rose bowl - marigold - rare color, super
 ___ 15. Drapery rose bowl - blue - scarce
 ___ 16. M'burg Cosmos IC shaped sauce - green - radium
1000 ___ 17. Hearts & Flowers PCE bowl w/ribbed back - lime green - fantastic, very rare, WOW!
 ___ 18. Hearts & Flowers PCE bowl w/ribbed back - marigold - dark, dark, dark & super
 ___ 19. Hearts & Flowers PCE bowl w/ribbed back - blue - very rare, nice
 ___ 20. Hearts & Flowers PCE bowl w/ribbed back - white - very scarce, highly desirable
 ___ 21. M'burg Bullseye & Loop 7" squatty vase - green - neat vase, has damage on top edge & base
 ___ 22. Concave Flute rose bowl - aqua - heat check in base
 ___ 23. M'burg Big Fish ruffled bowl - green - radium & super, a very rare & beautiful piece
 ___ 24. Double Stemmed Rose domed ftd 3 in 1 edge bowl - light marigold
4500 ___ 25. Hearts & Flowers ruffled compote - marigold on custard - extremely rare color & fantastic, a top piece in the collection
2200 ___ 26. Hearts & Flowers ruffled compote - powder blue opal - extremely rare & super, as nice as these get
 ___ 27. Hearts & Flowers ruffled compote - reninger blue - extremely rare color, nice
1800 ___ 28. Hearts & Flowers ruffled compote - green - one of the nicest I've seen, rare & desirable
 ___ 29. Hearts & Flowers ruffled compote - ice blue - scarce, nice
 ___ 30. Hearts & Flowers ruffled compote - ice green - very rare color
 ___ 31. Hearts & Flowers ruffled compote - aqua opal - butterscotch & pretty
 ___ 32. Hearts & Flowers ruffled compote - blue - super pretty & scarce, a dandy
 ___ 33. Hearts & Flowers ruffled compote - marigold - scarce
 ___ 34. Hearts & Flowers ruffled compote - white
 ___ 35. Fantail Ftd IC shaped bowl - blue - fantastic irid., scarce
 ___ 36. Fantail ftd IC shaped bowl - marigold - very pretty
 ___ 37. Holly 9" plate - green - a real beauty, very scarce & highly desirable
 ___ 38. Holly 9" plate - amethyst - also a pretty example of a scarce color
 ___ 39. Holly 9" plate - blue - pretty
 ___ 40. Holly 9" plate - marigold
 ___ 41. Holly 9" plate - white
 ___ 42. Holly 9" plate - clambroth - nice
 ___ 43. Orange Tree 8 pc. punch set - white - super pretty set, rare & desirable
 ___ 44. Orange Tree 8 pc. punch set - blue - very scarce & nice
 ___ 45. Orange Tree 8 pc. punch set - marigold - dark & nice
 ___ 46. Vintage Grape 8" ruffled bowl - marigold - radium
 ___ 47. Vintage Grape 3 in 1 edge sauces (2) - marigold - radium, choice
 ___ 48. Captive Rose 3 in 1 edge bowl - green
 ___ 49. Captive Rose 3 in 1 edge bowl - blue
3500 ___ 50. M'burg Many Stars ruffled bowl - blue - extremely rare M'burg piece w/super satin irid.
 ___ 51. M'burg Many Stars ruffled bowl - marigold - satin & super, also rare in M'burg
 ___ 52. Vintage 7" plate - green - pretty
 ___ 53. Peacocks ruffled bowl w/ribbed back - aqua opal - pastel & pretty, a dandy!
 ___ 54. Peacocks ruffled bowl w/ribbed back - white - very scarce color & nice
 ___ 55. Peacocks ruffled bowl w/ribbed back - blue - pretty w/electric highlights
 ___ 56. Peacocks ruffled bowl w/ribbed back - marigold - very nice
1250 ___ 57. Oriental Poppy 7 pc tankard water set - purple - a fantastic set, pitcher & tumblers match plus all are pretty
 ___ 58. Oriental Poppy tumblers (5) - marigold - dark & nice, choice
 ___ 59. Oriental Poppy tumbler - white - nice
 ___ 60. Oriental Poppy tumbler - green
 ___ 61. Oriental Poppy tumbler - purple
 ___ 62. Blackberry Open Edge ruffled basket - amber - very scarce color, want to call it red
 ___ 63. Blackberry Open Edge ruffled basket - green - pretty
 ___ 64. Blackberry Open Edge ruffled basket - amethyst
 ___ 65. Blackberry Open Edge ruffled basket - blue
 ___ 66. Blackberry Open Edge ruffled basket - marigold
1100 ___ 67. Wreath of Roses 10 pc. punch set w/Persian Medallion interior - green - fantastic, very rare & super pretty
 ___ 68. M'burg Whirling Leaves ruffled bowl - green - radium & pretty
 ___ 69. Orange Tree loving cup - white - rare color, handles have heat checks
 ___ 70. Orange Tree Loving cup - amethyst - rare color, very nice
 ___ 71. Orange Tree loving cup - green - scarce
 ___ 72. Orange Tree loving cup - blue - pretty
 ___ 73. Orange Tree loving cup - marigold - nice
2800 ___ 74. Stippled Grape & Cable bon bon - aqua opal - extremely rare bon bon, very few known
 ___ 75. Stippled Grape & Cable bon bon - purple - rare color to find stippled
 ___ 76. Lined Lattice 10" vases (2) - white - choice
 ___ 77. Lined Lattice 10" vase - purple

- 1100 78. Nippon 9" plate w/BW back - green - very pretty radium type irid.
79. Nippon 9" plate w/BW back - marigold - very rare plate, highly desirable
80. Blackberry Spray crimped edge flattened out hat shape - aqua - if flattened out any more, it would be a plate
81. Embroidered Mums ruffled bowl w/ribbed back - horehound - super pretty example, absolutely gorgeous, rare
82. Embroidered Mums ruffled bowl w/ribbed back - ice blue - pretty & scarce
83. Embroidered Mums ruffled bowl w/ribbed back - blue - scarce, very pretty
84. Orange Tree shaving mug - red slag - has silvery irid., extremely rare to find
85. Orange Tree shaving mug - blue
86. Heart & Vine 9" plate - amethyst - scarce, very desirable
87. Tree Trunk 10" vase - ice blue - dark, pretty
88. Tree Trunk 10" vase - white - scarce, nice
89. Tree Trunk 10" vases (2) - blue - both nice, choice
90. Tree Trunk 10" vase - marigold - dark from top to bottom
- 1950 91. Grape & Cable master 14 pc. punch set - purple - a carnival glass classic, rare & desirable
- 2500 92. Grape & Cable master 14 pc. punch set - marigold - dark & super beautiful set, rare
93. Dragon & Lotus IC shaped bowl - blue
94. N's Bushel Basket - sapphire - extremely rare & highly desirable
95. N's Bushel Basket - aqua opal - great opal w/butterscotch irid., nice
96. N's Bushel Basket - green - scarce & nice
97. N's Bushel Basket - lavender slag - scarce color
98. N's Bushel Basket - ice green - scarce
99. N's Bushel Basket - white
100. N's Bushel Basket - blue
101. N's Bushel Basket - marigold
102. N's Bushel Basket - custard - not carnival
103. M'burg Nesting Swan diamond shaped crimped edge bowl - green - radium & nice, extremely rare shape, a dandy
104. Cosmos & Cane tumbler - honey amber
105. Dragon & Lotus ruffled bowl - peach opal - scarce color, pretty
106. Dragon & Lotus ruffled bowl - green
107. Rose Show 9" plate - amethyst - some may call lavender, scarce & nice
108. Rose Show 9" plate - blue - scarce & very desirable
109. Rose Show 9" plate - marigold - nice
110. Rose Show 9" plate - white - turned up like a bowl
111. Fashion rose bowl - marigold - nice
112. Rustic 19 1/2" funeral vase - red, non irid. - very rare vase & neat, would go great w/your other vases
- 2000 113. Rustic 19" funeral vase - white - frosty & super, as pretty as these get
114. Rustic 19" funeral vase - amethyst - super pretty & very rare color for these
115. Rustic 19" funeral vase - blue - nice
116. Rustic 19" funeral vase - marigold - scarce & desirable
117. Fisherman's mug - purple
118. Nippon ruffled bowl w/BW back - ice green - super pretty, rare color, minor nick on seam of base
119. Nippon ruffled bowl w/BW back - white - frosty & nice
120. Blackberry Spray 2 sides up hat - red - cherry color, nice
- 5400 121. Good Luck 9" plate w/ribbed back - ice blue - super dark color, beautiful stretchy type irid., incredible, minor nick on top cleat of horseshoe
- 1400 122. Good Luck 9" plate w/ribbed back - green - super pretty, a dandy & rare
123. Good Luck 9" plate w/ribbed back - marigold - lots of pink irid., very scarce
124. Cobblestone ruffled bowl - marigold - pretty
- 4700 125. N's Corn vase w/stalk base - ice blue - extremely rare vase, dark color, a top piece
126. N's Corn vase w/plain base - marigold - dark, super & rare
127. N's Corn vase w/stalk base - green - scarce & nice
128. N's Corn vase w/plain base - purple - nice
129. N's Corn vase w/stalk base - ice green - pretty
130. N's Corn vase w/stalk base - white - scarce, nice
131. Scroll Embossed ruffled saucers w/File back (2) - purple - choice
- 1300 132. M'burg Peacocks master IC bowl - amethyst - radium & fantastic, extremely rare & highly desirable
133. Heavy Iris JIP hat shape - white - frosty & super, whimsy from the tumbler
- 2100 134. Blackberry Open Edge 7" whimsey vase - marigold - has the squatty, fat look, rare & desirable
135. Grape & Delight ftd rose bowls (2) - white - choice
- 1300 136. Leaf & Beads ftd nut dish - aqua opal - extremely rare piece & nice
137. Leaf & Beads ftd nut dish - white - scarce color, chip on foot
138. Leaf & Beads ftd nut dish - blue - super pretty
139. Morning Glory 12" funeral vase - marigold - nice dark color, neat squatty shape
140. M'burg Leaf & Little Flowers miniature compote - green - radium & super
141. M'burg Leaf & Little Flowers miniature ruffled compote - amethyst - radium, scarce
142. M'burg Leaf & Little Flowers miniature ruffled compote - marigold - scarce, radium
143. Imperial Grape ruffled bowl - amber - nice
144. Hearts & Flowers ruffled bowl w/ribbed back - ice green - very pretty, rare
145. Hearts & Flowers ruffled bowl w/ribbed back - ice blue - nice example
146. Hearts & Flowers ruffled bowl w/ribbed back - white - scarce



17



74



23



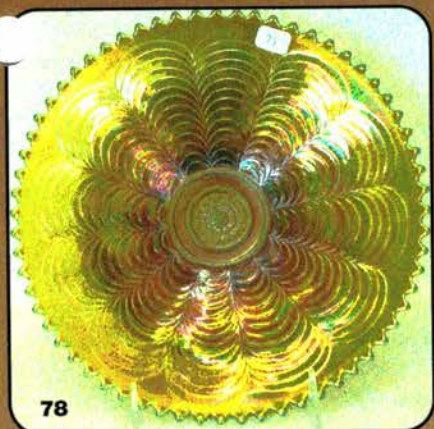
28



57



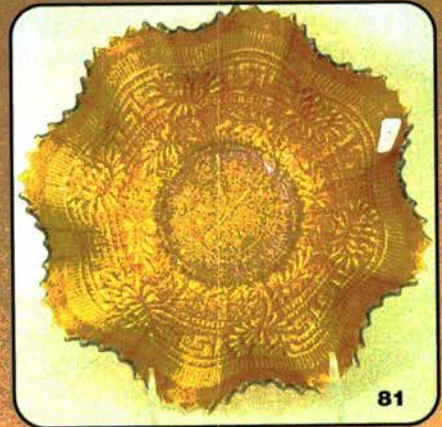
26



78



91



81



265



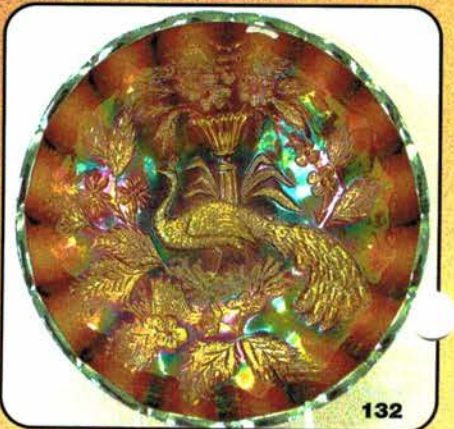
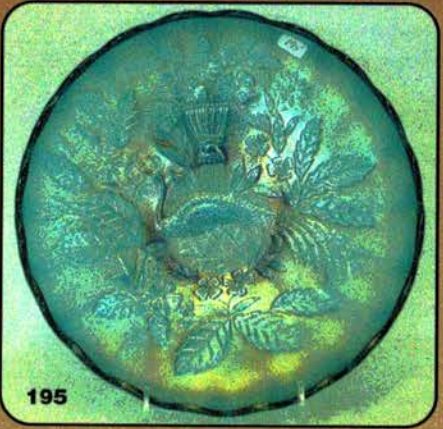
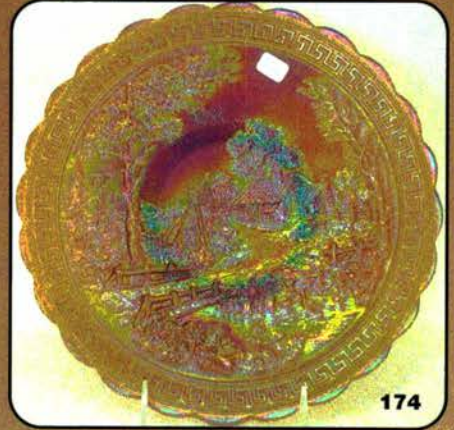
134



113

- ___ 147. **Hearts & Flowers ruffled bowl w/ribbed back - marigold - very pretty, scarce**
- ___ 148. Pansy ruffled bowl - purple
- ___ 149. **Many Fruits punch bowl & base - purple - super pretty, very rare, highly desirable**
- ___ 150. Inverted Strawberry tumbler - marigold - rare color, nice
- ___ 151. Inverted Strawberry tumbler - amethyst - scarce
- 575c 152. **Farmyard 3 in 1 edge bowl - purple - super pretty & highly desirable, a carnival classic**
- ___ 153. Jain 8 1/2" Elephant vases (2) - marigold - choice
- ___ 154. Jain 6" Elephant vases (2) - marigold - choice
- ___ 155. **M'burg Trout & Fly IC shaped bowl - amethyst - radium & very nice, rare in radium**
- ___ 156. **M'burg Trout & Fly IC shaped bowl - satin & super, rare**
- ___ 157. **Basketweave Open Edge two sides up basket - reverse amberina opal - very rare color**
- ___ 158. Basketweave Open Edge two sides up basket - green - scarce color
- ___ 159. Basketweave Open Edge two sides up basket - marigold
- 200c 160. **Stippled Grape & Cable PCE bowl w/ribbed back - aqua opal - very rare with nice opal**
- ___ 161. **Stippled Grape & Cable PCE bowl w/ribbed back - ice blue - very rare & nice**
- ___ 162. Vintage fernery - blue - pretty
- ___ 163. Vintage fernery - marigold - nice
- 110c 164. **Peacocks 9" plate w/ribbed back - ice blue - very rare & desirable**
- ___ 165. **Peacocks 9" plate w/ribbed back - blue - scarce & nice**
- ___ 166. **Peacocks 9" plate w/ribbed back - purple - scarce & desirable**
- ___ 167. **Peacocks 9" plate w/ribbed back - marigold - nice pink irid., scarce**
- ___ 168. Peacocks 9" plate w/ribbed back - ice green - very nice
- ___ 169. Peacocks 9" plate w/ribbed back - white - nice
- ___ 170. Double Stemmed Rose dome ftd deep round bowl - purple - nice
- ___ 171. Double Stemmed Rose dome ftd plate - white - rare shape
- 110c 172. **Horse Medallion 7" plate - powder blue - very rare & pretty, a great small plate**
- 180c 173. Spiralex 13" vase - white - very nice, scarce
- 180c 174. **Homestead chop plate - amber - fantastic irid. on this rare plate**
- ___ 175. Round Up 9" plate - blue - scarce & nice
- ___ 176. **Drapery Variant 8 1/2" vase - blue - very scarce, nice**
- ___ 177. Drapery Variant 8 1/2" vase - marigold - scarce
- ___ 178. Drapery Variant 9 1/2" vase - custard - not carnival
- ___ 179. **M'burg Courthouse IC shaped bowl - amethyst - radium & super, a very pretty piece**
- ___ 180. **M'burg Courthouse ruffled bowl - amethyst - radium & nice, scarce**
- ___ 181. **Miniature Morning Glory 4 3/4" flared out vase - purple - super**
- ___ 182. Miniature Morning Glory 5 1/2" flared vase - smoke - nice
- ___ 183. Miniature Morning Glory 5 1/2" flared vase - marigold
- ___ 184. **Grape & Cable banana boat - ice green - super pretty example, rare**
- ___ 185. M'burg Blackberry Wreath 7" ruffled bowl - marigold - radium
- 165c 186. Pony 6 ruffled bowl - aqua - very scarce color, nice
- ___ 187. **Kittens cup and saucer - blue - extremely rare to find a saucer, not many around, nice**
- ___ 188. Kittens cup and saucer - marigold - nice
- ___ 189. **Kittens two sides up dish - blue - scarce, nice**
- ___ 190. Kittens round bowl - marigold
- ___ 191. Kittens ruffled bowl - marigold
- ___ 192. Kitten's toothpicks(2) - marigold - choice
- ___ 193. Kittens 4 sides up dish - marigold
- 185c 194. **N's Peacock at Urn master IC bowl - green - extremely rare & one of the nicest of these that I have seen, a top top piece in this auction, WOW!**
- 115c 195. **N's Stippled Peacock at Urn master IC bowl - reninger blue - extremely rare color, not many around**
- ___ 196. **N's Peacock at Urn master IC bowl - ice blue - very pretty irid., highly desirable**
- 120c 197. **N's Peacock at Urn master IC bowl - blue - super pretty electric example, a dandy**
- ___ 198. **N's Peacock at Urn master IC bowl - marigold - scarce & nice**
- 150c 199. **N's Peacock at Urn IC set - amethyst - This includes the master, 6 sauces and the original wire store display that it was sold with. The set is very pretty and the holder is marked "Pat. Apd. For", Neat, Neat, Neat**
- ___ 200. M'burg Peacock Tail Variant ruffled compote - green - radium
- ___ 201. **Grape & Cable 8 pc round top punch set - purple - super set, harder to find then the ruffled set, pretty**
- ___ 202. Fenton Peacock at Urn ruffled compote - aqua - nice
- ___ 203. **M'burg Many Stars 3 in 1 edge bowl - green - radium & super, very rare, 5 point star**
- ___ 204. **M'burg Many Stars crimped edge ruffled bowl - marigold - radium & nice, 6 point star plus very rare**
- ___ 205. Pony 10 ruffled bowl - marigold
- ___ 206. **Panther ruffled sauce - white - extremely rare color for this pattern**
- ___ 207. **Panther ruffled sauce - red - very rare, nice**
- ___ 208. Panther ruffled sauce - goofus glass - not carnival
- ___ 209. Fenton's Fine Rib 10" vase - red - scarce
- ___ 210. Fenton's Fine Rib 10" vase - amber - rare color
- ___ 211. Fenton's Fine Rib 10" vase - lime green w/marigold overlay
- ___ 212. Fenton's Fine Rib 10" vase - aqua - nice
- ___ 213. M'burg Primrose crimped edge bowl - green - radium & pretty
- ___ 214. Strawberry bon bon - amber - scarce color
- ___ 215. Strawberry bon bon - vaseline
- ___ 216. **N's Peacock at the Fountain water pitcher - white - frosty, fantastic & rare, a beauty**

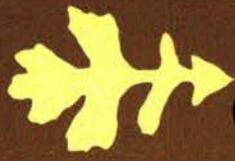
- ___ 217. **N's Peacock at the Fountain 5 pc water set - marigold - dark & fantastic, rare this nice**
- ___ 218. N's Peacock at the Fountain tumbler - ice blue - pretty
- ___ 219. N's Peacock at the Fountain tumbler - blue
- ___ 220. N's Peacock at the Fountain tumbler - purple
- ___ 221. Holly & Berry spade shaped nappy - peach opal
- ___ 222. Fleur De Lis collar based ruffled bowl - green - satin & super
- ___ 223. **Memphis 8 pc. fruit bowl set - purple - very pretty set, hard to find**
- ___ 224. Ripple 12" vase, 3 1/4" base - purple - nice
- ___ 225. Ripple 11" vase, 3 1/4" base - purple
- ___ 226. Ripple 8 3/4" vase, 3 1/4" base - purple - nice
- ___ 227. **Fruits & Flowers bon bon - ice green - super irid., very pretty color, rare**
- ___ 228. **Fruits & Flowers bon bon - ice blue - dark & pretty, scarce**
- ___ 229. **Fruits & Flowers bon bon - white - nice example, scarce**
- ___ 230. **Fruits & Flowers bon bon - aqua opal - butterscotch w/nice opal**
- ___ 231. Fruits & Flowers bon bon - blue - electric
- ___ 232. **N's Peacock at Urn ruffled bowl - marigold - super pretty pink & yellow irid., made from master IC bowl**
- ___ 233. M'burg Holly Whirl ruffled bowl - marigold - satin
- ___ 234. Dragon & Strawberry deep round bowl - blue - scarce shape, very pretty, minor nick on base
- ___ 235. Grape Arbor ruffled hat shape - blue - made from tumbler
- ___ 236. Grape Arbor ruffled hat shape - white - made from tumbler
- 1100 ___ 237. **M'burg Hobnail tumbler - marigold - very rare tumbler plus nice!**
- ___ 238. **M'burg Hobnail tumbler - blue - also very rare & pretty**
- ___ 239. Inverted Thistle 6" round bowl - green - can't remember selling this before, normally they are Inverted Strawberry
- 1100 ___ 240. **N's Wide Panel epergne - purple - extremely rare & pretty, tough color to find**
- ___ 241. Basketweave Open Edge large size square shaped basket - ice green - nice
- 1250 ___ 242. **Stippled Grape & Cable Variant ruffled bowl w/ribbed back - sapphire - very rare bowl & nice**
- ___ 243. **Stippled Grape & Cable Variant ruffled bowl w/ribbed back - aqua w/marigold overlay - this would be a sapphire w/o the marigold overlay, very rare & nice!**
- ___ 244. **Fine Cut & Roses candy dish - aqua opal - super pretty, normal feet**
- ___ 245. Fine Cut & Roses candy dish - ice blue
- ___ 246. Leaf Chain ruffled bowl - white
- ___ 247. **Tree Trunk 18" funeral vase - purple - extremely rare & highly desirable**
- ___ 248. Diamond & Daisy Cut water pitcher - marigold
- ___ 249. Diamond & Daisy Cut tumbler - marigold
- ___ 250. **Good Luck ruffled bowl w/ribbed back - blue - scarce**
- ___ 251. Good Luck ruffled bowl w/ribbed back - purple - pretty
- ___ 252. M'burg Mayan IC shaped bowl - green
- ___ 253. **Wishbone PCE bowl w/BW back - white - very scarce, nice**
- ___ 254. Orange Tree hatpin holder - blue
- ___ 255. Orange Tree hatpin holder - marigold - nice
- ___ 256. **Stippled Three Fruits PCE bowl w/ribbed back - blue - scarce color & nice**
- ___ 257. M'burg Zig Zag 3 in 1 edge bowl - amethyst - radium & pretty
- ___ 258. Corinth JIP 10" vase - blue opal - super nice, scarce
- ___ 259. Corinth JIP 9" vase - aqua
- ___ 260. **Persian Medallion bon bon - red - very scarce, highly desirable**
- ___ 261. Persian Medallion bon bon - green
- ___ 262. **Orange Tree 9" plate - blue - scarce & nice**
- ___ 263. Orange Tree w/trunk 9" plate - marigold
- ___ 264. Orange Tree w/trunk 9" plate - clambroth
- 1300 ___ 265. **Tree Trunk mid-size 11 1/2" vase - white - frosty & beautiful**
- ___ 266. **Tree Trunk mid-size 12" vase - green - pretty example, scarce**
- ___ 267. **Tree Trunk mid-size 12" vase - purple - very pretty, minor peeling on one flute**
- ___ 268. Strawberry 9" plate w/BW back - marigold
- ___ 269. Basketweave Open Edge JIP basket - green - pretty
- ___ 270. Basketweave Open Edge JIP basket - powder blue - nice
- ___ 271. **Butterfly & Berry master berry bowl - white - extremely rare color, very few around**
- ___ 272. M'burg Grape Wreath 8" ruffled bowl - green - radium, pretty
- ___ 273. **Stippled Three Fruits spt ftd ruffled bowl - lime green - rare color w/pretty irid.**
- ___ 274. **Stippled Three Fruits spt ftd ruffled bowl - aqua opal - nice opal, scarce**
- ___ 275. Ten Mums 3 in 1 edge large bowl - green
- ___ 276. **Diamond Lace 6 pc. water set - purple - super, a beautiful set**
- ___ 277. M'burg Blackberry Wreath ruffled sauce - green - radium & nice
- ___ 278. M'burg Blackberry Wreath ruffled sauce - marigold - radium & nice
- ___ 279. **Nippon PCE bowl w/ribbed back - white - scarce, pretty**
- ___ 280. Nippon PCE bowl w/ribbed back - ice blue - nice
- ___ 281. M'burg Rays & Ribbons crimped edge bowl - green - radium & super beautiful
- ___ 282. Rustic mid-size 15" vase - white - has a touch of lavender sun color
- ___ 283. Rustic mid-size 15" vases (2) - blue - choice
- ___ 284. Rustic mid-size 15" vase - marigold - very pretty
- ___ 285. **Good Luck PCE bowl w/ribbed back - blue - scarce, pretty**
- ___ 286. Good Luck PCE bowl w/ribbed back - marigold - nice
- ___ 287. **S-Repeat tumbler - marigold - dark, super & rare!**



- ___ 288. M'burg Feather & Heart tumbler - amethyst
- ___ 289. M'burg Feather & Heart tumbler - marigold
- ___ 290. Broken Arches punch bowl & base - marigold - rare color, large chip on top edge
- Bowl* ___ 291. Holly IC shaped bowl - blue - pretty
- ___ **292. M'burg 1910 Detroit Elk's ruffled bowl - amethyst - radium & pretty, very rare & highly desirable**
- ___ 293. Wreath of Roses rose bowl - amber - rare color
- ___ 294. Leaf Columns 10" vase - lime green - very rare color & nice
- ___ 295. Lotus & Grape bon bon - marigold
- ___ **296. N's Eight Sided bushel basket - ice blue - very scarce, nice**
- ___ **297. N's Eight Sided bushel basket - green - scarce color, nice**
- ___ 298. N's Eight Sided bushel basket - white - nice
- ___ 299. Three Fruits ruffled bowl w/plain back - light horehound - odd tint to glass, neat piece
- ___ 300. Ripple 7" vase w/2 3/8" base - marigold
- ___ **301. Poppy Show ruffled bowl - white - scarce & nice**
- ___ 302. M'burg Holly Sprig card tray shaped bon bon w/54th Anniversary Isaac Benesch & Sons - marigold - satin
- ___ 303. M'burg Holly Sprig card tray shaped bon bon - green - satin
- ___ **304. Dorsey & Funkenstein Fine Furniture Adv. ruffled bowl - amethyst - very scarce advertising piece, nice**
- ___ 305. God & Home tumbler - blue - minor damage on base
- ___ 306. Apple Tree tumbler - white - pretty
- ___ 307. Raspberry tumbler - purple - pretty
- ___ **308. Concord 9" plate - marigold - very rare plate, marigold is tougher than any other color**
- ___ 309. Holly ruffled compote - light aqua w/marigold overlay
- ___ **310. Stippled Grape & Cable Variant Old Rose Distillery Adv. 9" plate - green - pretty & scarce**
- ___ 311. Fenton's Peacock at Urn ruffled bowl - white - nice
- ___ **312. Daisy & Drape flared out vase - aqua opal - butterscotch & nice**
- 2100* ___ 313. Daisy & Drape turned in vase - white - scarce
- ___ **314. M'burg Bernheimer Bros. Many Stars ruffled bowl - blue - extremely rare & highly desirable, satin & nice**
- ___ 315. Near Cut Sov. mug w/"Granger's Picnic" - marigold
- ___ **316. Peacock at the Fountain ruffled compote - white - rare**
- ___ **317. Peacock at the Fountain ruffled compote - marigold - very pretty & hard to find**
- ___ 318. M'burg Little Stars ruffled 7" bowl - amethyst - satin, scarce
- ___ 319. Floral & Grape 7 pc. water set - amethyst - scarce & nice
- ___ 320. M'burg Strawberry ruffled compote - marigold - radium & pretty
- ___ 321. Enameled Shasta Daisy tumbler - ice green
- ___ 322. Concave Diamond tumblers (2) - celest blue - choice
- ___ 323. Springtime tumbler - green
- ___ **324. Persian Garden fruit bowl & base - white - frosty & pretty, great set**
- ___ 325. Grape & Cable bon bon - blue - electric & super
- ___ 326. Four Pillars 11" vases (2) - aqua opal - both butterscotch, choice
- ___ 327. Four Pillars 9" vase - aqua opal - neat shape, nice
- ___ 328. Four Pillars 9" vase - custard - not carnival
- ___ **329. Grape & Cable sweetmeat - blue - extremely rare color & pretty, fantastic piece!**
- ___ 330. Grape & Cable sweetmeat - purple - nice
- ___ 331. Peacock & Grape IC shaped bowl - vaseline - repair on base
- ___ **332. Poppy pickle dish - green - very pretty example, scarce**
- ___ 333. Poppy pickle dish - blue - pretty
- ___ 334. Poppy pickle dish - marigold - pretty
- ___ 335. M'burg Nesting Swan ruffled bowl - amethyst - radium & nice
- ___ 336. Hatpins including: Top of the Morning; Butterflies; Rooster in lavender & blue; Six Plums; Basketflower; Moiré Beetles (2); Coolie Hat; Triad; Butler's Mirror; Border Path; Tufted Throw Pillow; Big Butterfly & others - choice
- ___ 337. Owl in Window hatpin - dark - lightly irid.
- ___ 338. Non-irid. hatpins including: Sunflower; Spider & Big Butterfly - choice
- ___ **339. Rose Show ruffled bowl - ice green - rare & pretty, a dandy**
- ___ **340. Rose Show ruffled bowl - ice blue - minor nick in pattern, scarce**
- ___ **341. Rose Show ruffled bowl - marigold - minor nick on rose - pretty**
- ___ 342. Rose Show ruffled bowl - blue opal - non-carnival
- ___ 343. Flowers & Frames dome ftd ruffled bowl - purple - nice
- ___ **344. Ten Mums 7 pc. tankard water set - marigold - dark & super, great pitcher w/super matching tumblers**
- ___ **345. Round Up 3 in 1 edge deep bowl - white - pretty**
- ___ **346. Leaf & Beads rose bowl - white - rare & desirable, nice**
- ___ **347. Leaf & Beads rose bowl - aqua opal - butterscotch & beautiful, great opal**
- ___ 348. Leaf & Beads rose bowl - marigold - nice
- ___ 349. Orange Tree mug - brick red, scarce & nice
- ___ 350. Orange Tree mug - amethyst - nice
- ___ **351. M'burg Peacock at Urn 3 in 1 edge Mystery bowl - marigold - satin & nice**
- ___ 352. M'burg Boutonniere ruffled compote - green - radium & pretty
- ___ 353. Double Stemmed Rose dome ftd ruffled bowl - celest blue - rare, nice, has epoxy on back of edge
- ___ 354. Coin Dot large rose bowl - amethyst
- ___ **355. Many Fruits 8 pc. punch set - marigold - hard to find**
- ___ 356. Grape & Cable ftd flattened out centerpiece bowl - frosted green glass, not carnival, different

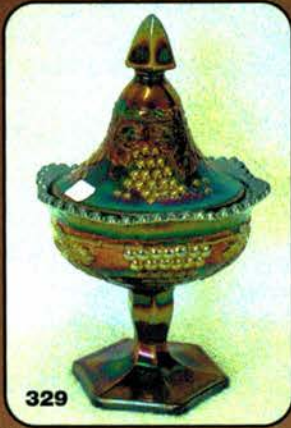
- ___ 357. Constellation compote - white
- ___ **358. M'burg Whirling Leaves tri-cornered crimped edge bowl - amethyst - exceptional radium irid. w/lots of blue, minor flake on outer edge**
- ___ **359. M'burg Whirling Leaves tri-cornered crimped edge bowl - marigold - radium & super**
- ___ 360. Vintage large size epergne - green - hard to find
- ___ **361. Peacocks PCE bowl w/plain back - white - frosty & nice, very scarce**
- ___ **362. Peacocks PCE bowl w/ribbed back - blue - electric & pretty**
- ___ **363. Peacocks PCE bowl w/ribbed back - purple - very scarce & nice**
- ___ 364. Three Fruits 9" plate w/BW back - green
- ___ **365. M'burg Hobnail Swirl spittoon - marigold - very hard to find & nice**
- ___ 366. Grape & Cable Variant PCE bowl w/plain back - purple - super pretty
- ___ **367. Rosalind small size ruffled compote - amethyst - super pretty, extremely rare**
- ___ 368. Grape & Cable small berry bowl - blue - electric & super, rare in blue
- ___ **369. Beaded Cable rose bowl - white - scarce & nice**
- ___ 370. Beaded Cable rose bowl - aqua opal - very pretty example
- ___ 371. M'burg Peacock small berry bowl - amethyst - satin
- ___ **372. M'burg Deep Grape round shaped compote - marigold - fantastic example, minor nick on flat of base**
- ___ 373. Orange Tree breakfast sugar bowl - white
- ___ 374. Strawberry PCE bowl w/plain back - lavender - very scarce color & pretty
- ___ **375. Peacock & Grape ruffled bowl - lime green opal - very pretty example, rare**
- ___ 376. Crystal based double lamp w/2 Drapery marigold on moonstone shades
- ___ 377. Crystal based double lamp w/2 Wide Panel marigold on moonstone shades
- ___ **378. Grape & Cable 7 pc. water set - purple - nice set**
- ___ **379. M'burg Tulip Scroll 12" vase - green - scarce & nice**
- ___ 380. Grape & Cable hatpin holder - purple - nice
- ___ 381. Grape & Cable hatpin holder - green
- ___ **382. Brooklyn Bridge 10 ruffled bowl - marigold - very pretty example, scarce**
- ___ 383. Pastel Swan salt - green opal - not carnival glass, scarce
- ___ 384. Pastel Swan salt - lime green
- ___ 385. Pastel Swan salt - ice green
- ___ 386. Pastel Swan salt - celest blue
- ___ 387. Pastel Swan salt - frosted glass - haven't seen this one before, not carnival, minor nick on edge
- ___ 388. Contemporary Swan salts (3) - choice
- ___ **389. Stippled Three Fruits ruffled bowl w/ribbed back - aqua opal - fantastic example w/great opal & pretty butterscotch irid.**
- ___ **390. Stippled Three Fruits ruffled bowl w/ribbed back - white - very scarce & pretty**
- ___ **391. Stippled Three Fruits ruffled bowl w/ribbed back - marigold - pumpkin irid., beautiful**
- ___ 392. Jain fish 9" vase - marigold
- ___ **393. M'burg Peacock large crimped edge bowl - marigold - radium & very pretty**
- ___ 394. Wild Strawberry handgrip plate - green - nice
- ___ **395. Fruits & Flowers 7" ruffled bowl w/BW back - ice green - super pretty, very scarce**
- ___ 396. M'burg Leaf & Little Flowers sherbet shaped compote - amethyst - radium, nice
- ___ 397. M'burg Leaf & Little Flowers sherbet shaped compote - marigold - radium, nice
- ___ 398. Wishbone ftd ruffled bowl - white - scarce & desirable
- ___ 399. Wishbone ftd ruffled bowl - purple - pretty
- ___ 400. Rustic mid-size 16" crimped edge vase - white - nice
- ___ **401. Stippled Good Luck ruffled bowl w/ribbed back - blue - very pretty, has electric highlights**
- ___ 402. Singing Birds mug - blue - pretty
- ___ **403. Embroidered Mums bon bon - white - extremely rare & pretty**
- ___ 404. Diamond Columns 16" vase - blue
- ___ **405. 1910 Detroit Elks ruffled bowl - green - scarce & desirable**
- ___ 406. Peach Tumbler - white - has gold decoration
- ___ 407. Grape Arbor tumbler - white - nice
- ___ **408. Open Rose 9" plate - amber - prettiest one I've sold ever!**
- ___ 409. Drapery candy dish - ice blue
- ___ **410. N's Thin Rib 11" vase - ice blue - scarce & nice**
- ___ 411. N's Thin Rib 11" vase - blue - electric & beautiful
- ___ 412. Two Fruits divided bon bon - marigold
- ___ **413. Acorn Burrs 8 pc. punch set - amethyst - extremely rare set, highly desirable**
- ___ 414. Fentonia tumbler - blue
- ___ 415. File tumbler - marigold
- ___ 416. Inverted Feather cracker jar - green - nice
- ___ 417. M'burg Blackberry Wreath 10" ruffled bowl - marigold - radium, scarce
- ___ **418. Basketweave Open Edge small size square shaped basket - ice blue - nice**
- ___ 419. Fenton's Peacock at Urn 9" plate - marigold - pretty, scarce
- ___ **420. M'burg Bulleye & Loop 14" vase - amethyst - very hard to find**
- ___ 421. Round Up low ruffled bowl - peach opal - nice
- ___ 422. M'burg Nesting Swan ruffled bowl - amethyst - satin, scarce
- ___ 423. Holly ruffled hat shape - red - scarce
- ___ **424. Poppy Show 9" plate - white - very scarce & nice**
- ___ 425. Marigold tumblers including: Crabclaw; Vineyard & Waterlily - choice
- ___ **426. M'burg Vintage IC shaped bowl - w/Hobnail back - green - extremely rare bowl, satin & super**
- ___ 427. Jain 5" left hand vase - marigold
- ___ **428. Stippled & Banded Grape & Cable banana boat - blue w/slag effect - very rare, pretty**
- ___ 429. Diamond & Prisms large rose bowl? - marigold - not sure of this pattern

- ___ 430. **Memphis 9 pc. punch set - marigold - super pretty, a rare set**
- ___ 431. M'burg Grape Wreath Variant 7" 3 in 1 edge bowl - amethyst - radium
- ___ 432. **Raspberry ruffled compote - white - very rare color for these, nice**
- ___ 433. Fine Cut & Roses rose bowl - ice blue - pretty
- ___ 434. **Thumbprint & Ovals vase - marigold - scarce & desirable**
- ___ 435. Orange Tree ruffled bowl - white
- ___ 436. **N's Thin Rib 7" squatty vase - ice blue - very pretty**
- ___ 437. Double Star tumbler - green
- ___ 438. Holly ruffled hat shape - amethyst opal - very scarce color
- ___ 439. **N's Thin Rib 13" mid-size vase - white - scarce & desirable**
- ___ 440. N's Thin Rib 14" mid-size vase - green - nice
- ___ 441. M'burg Primrose ruffled bowl - amethyst - radium
- ___ 442. **Grape & Cable mid-size 10 pc. punch set - marigold - very scarce set & nice**
- ___ 443. Grape & Cable mid-size base - marigold
- ___ 444. **Fenton's Flute 9" vase - red - looks red, a dandy**
- ___ 445. Scroll Embossed 9" ruffled bowl w/File back - purple - super
- ___ 446. **Three Row Open Edge basketweave IC shaped bowl - ice green - scarce, pretty**
- ___ 447. Basketweave Open Edge ruffled basket - red - scarce
- ___ 448. M'burg Hobnail Swirl 10" vase - green - scarce, nice
- ___ 449. Leaf Chain 9" plate - white - pretty
- ___ 450. Morning Glory 5 1/2" vase - purple
- ___ 451. Morning Glory 5 1/2" vase - marigold
- ___ 452. **Four Flowers chop plate - peach opal - scarce, nice**
- ___ 453. M'burg Holly Sprig tri-cornered 7" bowl - marigold - radium & nice
- ___ 454. **Heavy Grape chop plate - white - fantastic stretchy irid., on this rare piece**
- ___ 455. Cut Flowers vase - marigold
- ___ 456. Fenton's Flowers rose bowl - lime green - chip on one foot
- ___ 457. Fenton's Flowers rose bowl - white - chip on one foot
- ___ 458. **Dandelion mug - aqua opal - great opal, nice**
- ___ 459. Dandelion mug - marigold - nice
- ___ 460. Plain Jane hat shape - purple - nice
- ___ 461. **Captive Rose 9" plate - marigold - scarce & nice**
- ___ 462. Scales ruffled bowl - marigold on milk glass
- ___ 463. **Spector's Dept. Store Heart & Vine 9" plate - marigold - very pretty, very rare**
- ___ 464. Broken Arches punch bowl base - purple
- ___ 465. **Three Row Basketweave Open Edge 2 sides up basket - white - frosty, stretchy & nice**
- ___ 466. Imperial Grape water carafe - purple - pretty
- ___ 467. Heart & Vine ruffled bowl - green - fantastic! many would call this emerald
- ___ 468. **M'burg Peacock at Urn mystery ruffled bowl - green - satin & nice**
- ___ 469. Basketweave Open Edge large size ruffled basket - white
- ___ 470. M'burg Hanging Cherries 3 in 1 edge 9" bowl - amethyst - radium, very scarce & nice
- ___ 471. **Zipper Loop 8" lamp, has 4 3/4" base - marigold - pretty**
- ___ 472. Strawberry ruffled bowl w/BW back - purple
- ___ 473. Blossomtime ruffled compote - marigold - nice
- ___ 474. Butterfly & Berry 9" vase - green - scarce color for these
- ___ 475. Sov. of Millersburg Glass Co. Founded 1909 toothpick - marigold
- ___ 476. Blackberry Spray ruffled hat shape - amberina - nice
- ___ 477. Marathon Oil small pig bank - marigold
- ___ 478. **Stippled Three Fruits 9" plate w/ribbed back - blue - electric & super, a real screamer**
- ___ 479. **Stippled Three Fruits 9" plate w/ribbed back - marigold - dark & nice**
- ___ 480. Grape Arbor tumbler - marigold
- ___ 481. Tornado small size vase - purple - large chip on base
- ___ 482. M'burg Marilyn water pitcher - marigold - cracked
- ___ 483. **Rustic 18" funeral vase w/plunger base - blue - fantastic, a super vase!**
- ___ 484. Stretch Glass large bowl - russet
- ___ 485. Frosted Block rose bowl & square bowl - white - choice
- ___ 486. Damaged pcs of Carnival glass (3) - choice
- ___ 487. Contemporary pcs. including: Poppy Show vase - celest blue; Diamond Rib whimsey basket - red; Homestead Chop plate, IG - smoke; Inverted Fan & Feather tumbler - blue; Inverted Strawberry tumblers (2) - aqua; Thumbprint & Ovals vase - aqua opal; Robin Mugs (2) - red; Swan salt w/painted decoration - white - all Sold Choice
- ___ 488. Sov. Pcs. including: 1993 ICGA Whimsey Frolicking Bears vase - marigold; 1984 ICGA Lions rose bowl - blue; 1994 ICGA Diamond Rib JIP vase - celest blue; 1978 HOACGA corn vase - red; 1987 ICGA decorated pitcher - green; 1995 ACGA Inverted Strawberry creamer - red - all Sold Choice
- ___ 489. Misc. pcs of glass (6) - choice
- ___ 490. Carnival Glass books - choice



Seeck Auctions

P.O. Box 377
Mason City, Iowa 50402



329



372



240



304



292



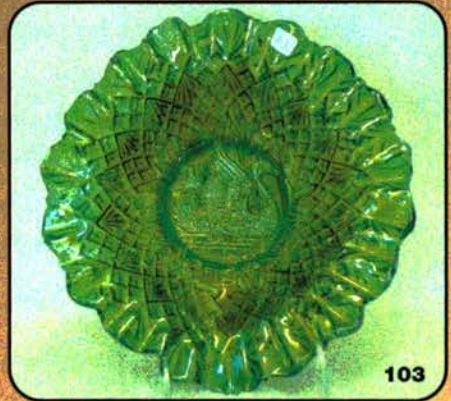
314



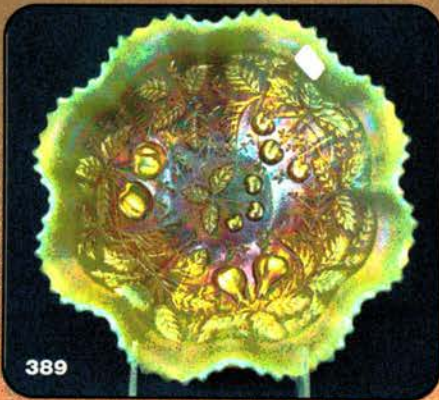
358



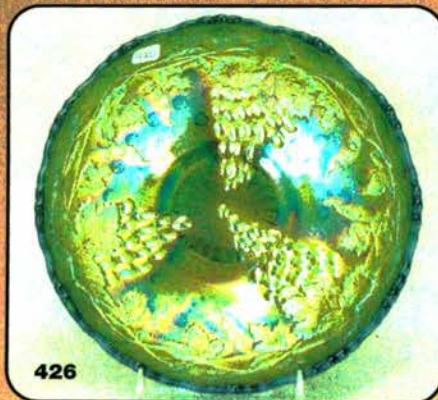
344



103



389



426



463