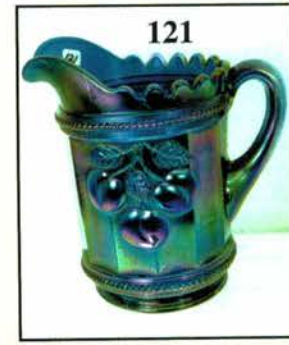
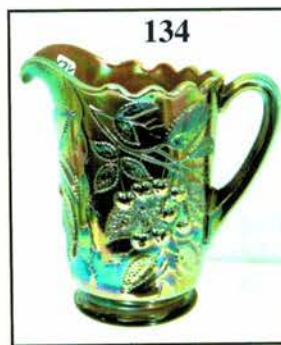
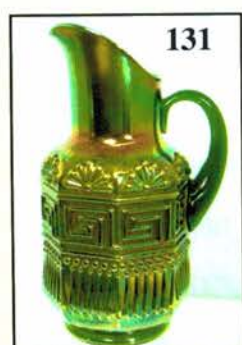
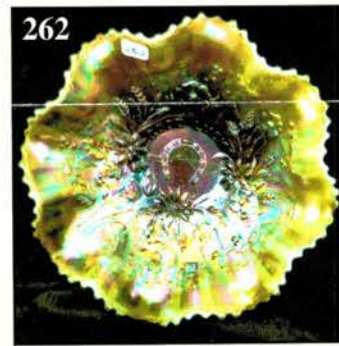
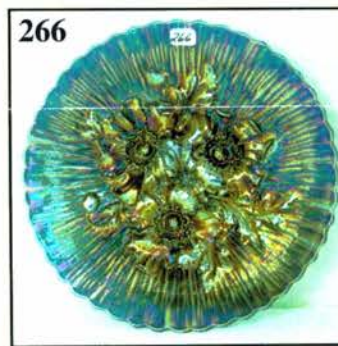
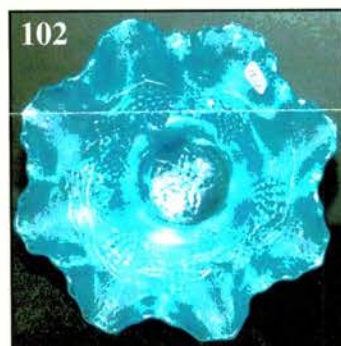
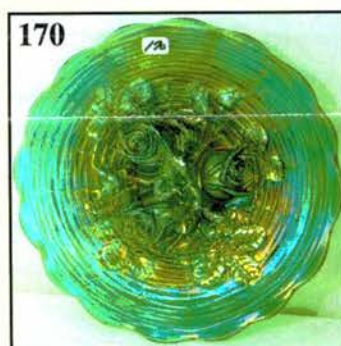
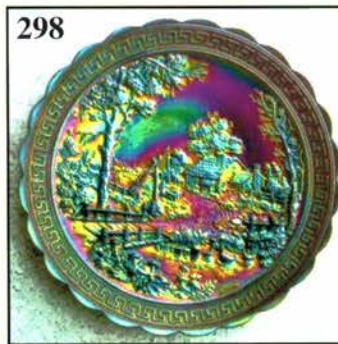
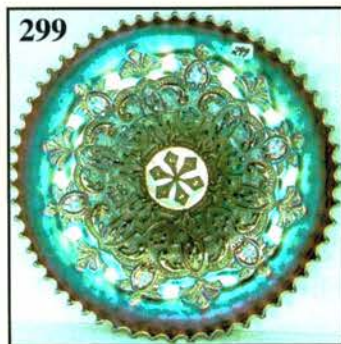
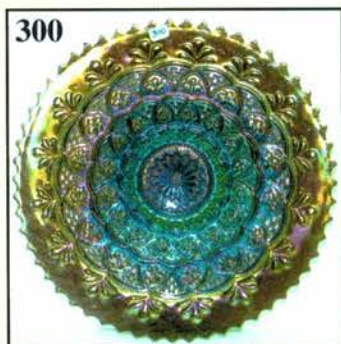


TOP SHELF CARNIVAL GLASS AUCTION

Saturday, June 10, 2006 9:00 a.m.

WILFRED AND JUDY SCHUTZ COLLECTION
Top Upgrade of Quality and Iridescence



Held By the Mickey Reichel Antique & Auction L.C.
Office: 660-882-5292 • Home: 660-882-5283

 **NEW WEB SITE: www.AWK-SHN.com**

E-mail: mreichel@AWK-SHN.com

Held Inside the Mickey Reichel Auction Center

1 Mile North of I-70 on Hwy. 5, Exit 101, Boonville, Missouri • 20 Miles West of Columbia, MO on I-70



Preview Friday 12 p.m. - 5 p.m. and 7:30 a.m. - 9:00 a.m. Day of Auction

TERMS: Cash or Good Check, VISA and MasterCard accepted.



4% Clerking Fee on all purchases except for payment of cash or check. Proper I.D. required.

WEB SITE: www.AWK-SHN.com

ABSENTEE BID POLICY:

WRITE IN BIDS: If you are unable to attend the auction, we will be happy to accept absentee bids which must be received by THURSDAY, JUNE 8, 2006. Don't Delay. **E-Mail: mreichel@AWK.SHN.com** ← ← ← ←

FOR AUCTION PRICE RESULTS: Send \$3.00 and Large S.A.S.E. to 18350 Hunters Ridge Ct., Boonville, MO 65233-2971

PLEASE NOTE: There is a **\$5 handling charge for each successful bid which will be added to the selling price** for all write-in bids. This is in addition to the cost of postage, insurance and packing. Your write-in bid will be entered just as if you are present and bidding. **Successful bidders will be notified in 1 to 3 days by the auctioneer (so be sure to include your phone number).** Direct mail bids to Auctioneer Mickey Reichel, 18350 Hunters Ridge Ct., Boonville, MO 65233-2971. Terms: Cash or Check accepted with proper I.D. and Social Security Number and References. Announcements made day of the auction supercede all printed material. Not Responsible for Accidents or Sold Items.

No return on any items once they leave the Auction Center (No Exceptions).****

Call for additional information: 660-882-5292 days or 660-882-5283 evenings before 9:00 p.m.

FAX: 660-882-5292 (evening hours start FAX transmission after beep)

MAIL BIDS: Items are bid on in perfect condition with average or above iridescence OR as listed in the brochures. Bids will not be carried out when damage on an item has been found during the auction.

PEOPLE PRESENT AT AUCTION ARE RESPONSIBLE FOR FINDING ANY PINHEADS, WEAR, SPOTTINESS, MANUFACTURER'S DEFECTS OR ANY OTHER MINOR FLAWS, ETC. *****

NOTE: Read each line, as we have accentuated the type of no particular piece, all are special.

Make Reservations EARLY at one of these local motels:



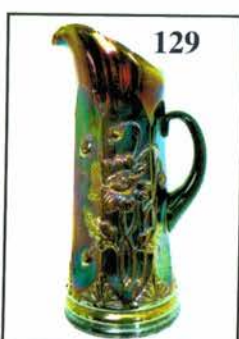
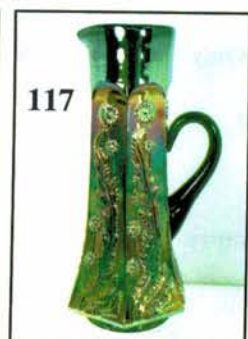
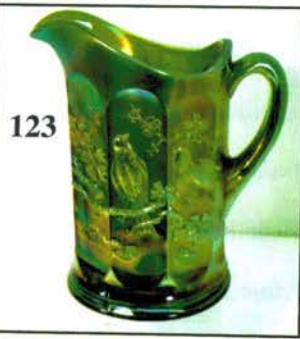
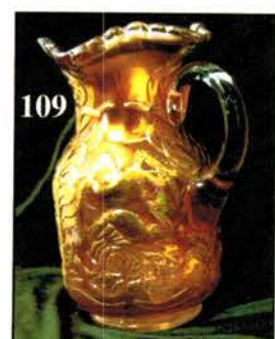
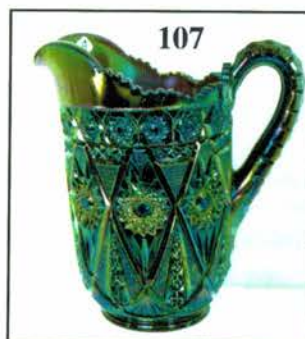
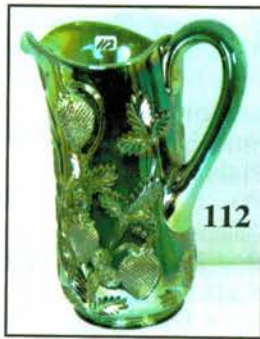
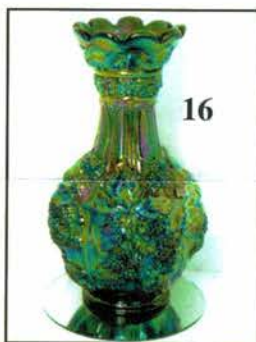
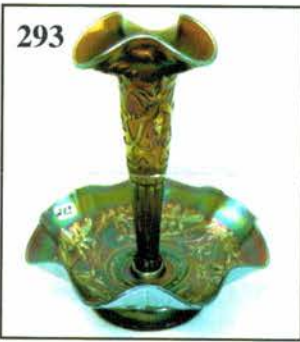
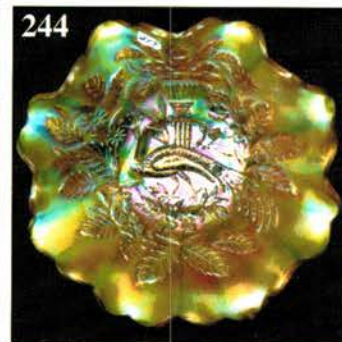
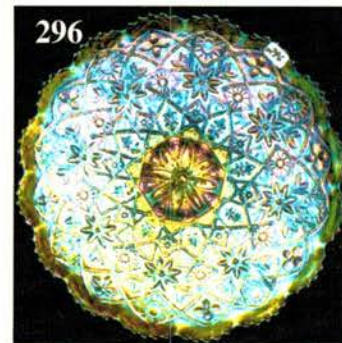
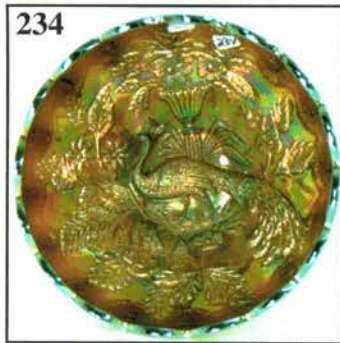
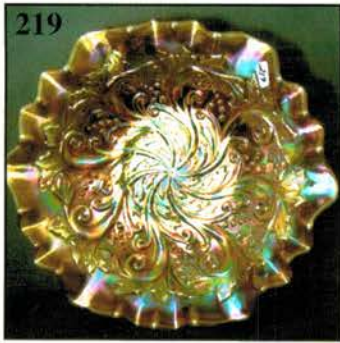
Isle of Capri Casino Hotel: 660-882-1200

Days Inn: 660-882-8624 • Comfort Inn: 660-882-5317 • Super 8: 660-882-2900 • Holiday Inn: 660-882-6882

Auction Consists of Rarity, Great Irid. and Variety

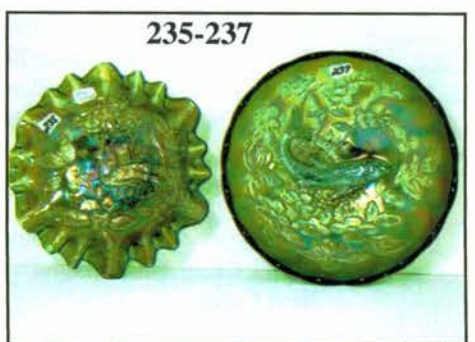
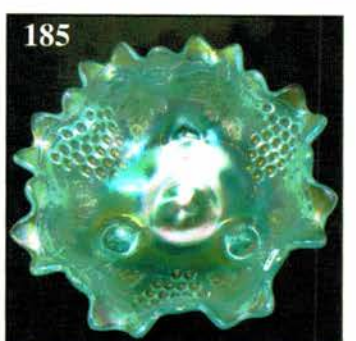
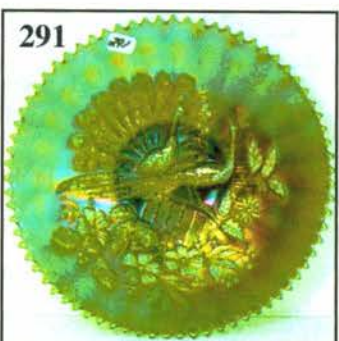
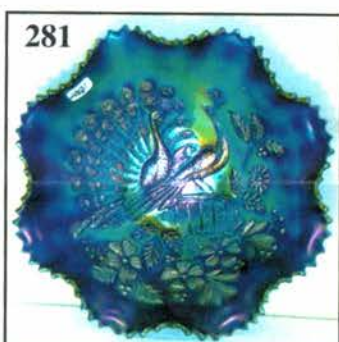
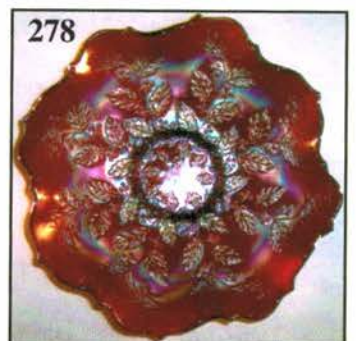
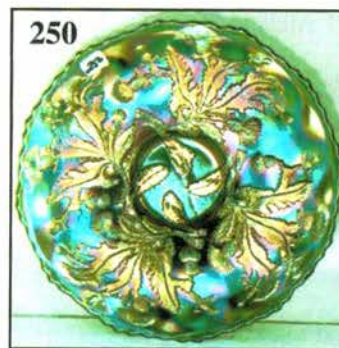
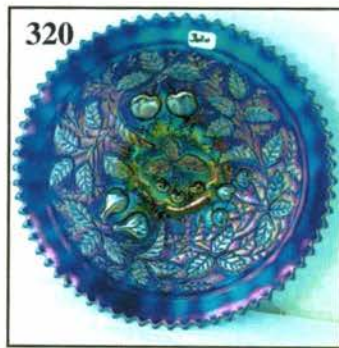
- | | |
|--|--|
| _____ 1. M - Crackle Car Vase w/Hld. | _____ 11. Radium M - 12" Imp. Beaded Bulls Eye Swung Vase - Great |
| _____ 2. M - 9" Hand Vase - A Beauty | _____ 12. Fantastic Elec. P - 10-1/2" Imp. Beaded Bulls Eye Vase - 5-3/4" Opening |
| _____ 3. M - 6" Diamond Point Column Squatty Vase | _____ 13. Amber - Ripple 9" Vase, 4-1/2" Opening - Always Desirable |
| _____ 4. B - 8" Paneled Diamond/Bows Vase | _____ 14. P - Ripple 10-1/2" Vase, 4" Base, 7-1/4" Opening - Fantastic |
| _____ 5. M - 5-1/2" Boggy Bayou Vase - Great Squatty Item | _____ 15. Elec. P - Ripple - 12-1/2" Vase, 3-3/8" Base, 4-1/2" Opening |
| _____ 6. B - Rustic 10" Vase - Multi Radium Irid. | _____ 16. P - Spectacular Imp. Loganberry Vase - Throbbing Irid. |
| _____ 7. Pumpkin M - 9-1/2" CRE Knotted Beads Vase - Scarce Beauty | _____ 17. Scarce Smoke - Imp. 7-1/2" Curled Rib Vase w/6" Opening - Amazing Color |
| _____ 8. B - 11-1/2" Long Thumbprint Hobnail Vase - Multi Radium | _____ 18. Pumpkin M - Imperial Huge, Outstanding, Poppy Show Vase |
| _____ 9. A - 10-1/4" April Showers Vase - Peacock Tail Interior - Scarce | |
| _____ 10. Smoke - 4-1/2" Cuspidor Top Rococco Vase w/M. Base - Most Unusual | |

- _____ 19. Ice B - Brocaded Acorns 8-1/2" Fan Vase w/Gold Trim
- _____ 20. Deep P - Dugan 7-3/4" Circle Scroll Vase (Whimsey made from Tumbler)
- _____ 21. P - Dugan, 8-1/2" Lattice/Points Vase - Scarce/Electric
- _____ 22. GREAT PO - Squatty 6-1/2" Dugan Target Jardinier Type Vase - 3-7/8" Base, 7" Opening
- _____ 23. Deep P - Dugan 9" Lined Lattice Vase - Electric
- _____ 24. Awesome Radium B - Dugan 10-1/4" Big Basketweave Vase
- _____ 25. M - Imp. Spiral Candlesticks - Neat
- _____ 26. M - Double Scroll Candlesticks w/Spiral Rib Base - Very Nice
- _____ 27. M - Double Scroll Console Bowl - Radium Electric
- _____ 28. Sapphire - N 8-1/2" Colonial #695 Candlesticks
- _____ 29. Vaseline - N 8-1/2" Colonial Candlesticks
- _____ 30. Celeste B - (?) US Glass, 9" (Plate #718 Pattern) Candlesticks
- _____ 31. Celeste B - Diamond Dugan 9-3/4" Vase Candlesticks
- _____ 32. Scarce M - Daisy Cut Bell - Really Unusual
- _____ 33. Dk. M - DeVibiss 6" Tall Perfume Bottle w/Stopper Complete
- _____ 34. Teal - Novelty Honey Pot - Neat Item
- _____ 35. M - 1/2 Pint Jackman Whiskey Bottle
- _____ 36. Vaseline Base - Fenton Goblet Shape Holly Compote w/M Overlay
- _____ 37. M - My Lady's Powder Jar w/Lid - Outstanding
- _____ 38. Helios G - 4-3/4" Tall Corn Bottle
- _____ 39. Fantastic M - 3-1/2" Tall Imp. Little Barrel
- _____ 40. M - Westmoreland Wild Rose Syrup Jug - A Connoisseur's Item
- _____ 41. M - Westmoreland Estate Breakfast Cream/Sugar Set
- _____ 42. Blue Opal - Westmoreland Estate Breakfast Cream/ Sugar Set
- _____ 43. M - Imp. Flute Toothpick Holder - Great Item
- _____ 44. Rare Celeste B - Arched Flute Toothpick Holder
- _____ 45. Cranberry Flashed w/Gilding - (1908) Shriners Wheat Toothpick or Shotgun
- _____ 46. Miniature Radium Vaseline - 3" Stippled Estate Vase
- _____ 47. Smoked Flashed - Ftd. Estate Westmoreland Master Salt
- _____ 48. Pretty M - N Grape/Cable Pin Tray - Little
- _____ 49. M - Hemingray D-510 Insulator
- _____ 50. Sapphire - Miniature N Stemmed Salt - 1 Only
- _____ 51. M - Miniature N Stemmed Salts - 6 x \$
- _____ 52. W - Hard to Find Orange Tree Punch Cup
- _____ 53. Pink Pastel - Swan Salt
- _____ 54. Celeste B - Pastel Swan Salt
- _____ 55. M - Miniature Fenton Flared Out Nut Cup
- _____ 56. Celeste B - Fenton Regular Shape Miniature Nut Cup
- _____ 57. M - Fenton Regular Shape Miniature Nut Cup
- _____ 58. Yellow Vaseline - Fenton Regular Shape Miniature Nut Cup
- _____ 59. M Flashed - 2-1/2" Tall Mini Brandy Snifter
- _____ 60. M Flashed - 2" Tall Mini Mug Manhattan (Vt.) Pattern?
- _____ 61. M - 3-1/2" Tall Melon Rib Salt/Pepper Set w/Tops
- _____ 62. Card of 11 - Really Pretty Carnival Glass Buttons
- _____ 63. M - 3" Tall Waterlily/Cattail Whimsey Vase
- _____ 64. Scarce M - Tulip/Cane Cordial - 3-3/4" Tall
- _____ 65. M - Tulip/Cane Cordial Claret - 4-3/4" Tall
- _____ 66. M - 4" Tall Star/File Wine
- _____ 67. M - 4-1/8" Tall Four Seventy Four Wine Glass
- _____ 68. M - 3-7/8" Tall Band of Stars Wine Glass
- _____ 69. M - Sailboats 4-5/8" Tall Wine Glass
- _____ 70. M - 3-1/2" Tall Octagon Cordial
- _____ 71. M - 3-3/4" Tall Diamond Sunburst Wine Glass
- _____ 72. Radium P - Imp. Grape Wine Glass
- _____ 73. Dk. Radium M - Imp. Grape Wine Glass
- _____ 74. B - Kittens Whimsey 2-1/4" Tall Toothpick or Vase?
- _____ 75. Soft Satin M - Kittens Cup/Saucer Set
- _____ 76. Darker M - Kittens Cup/Saucer Set
- _____ 77. M - 4-1/4", 6 Ruffle Kittens Bowl
- _____ 78. Dk. M - Kittens Cereal Bowl
- _____ 79. M - Kittens Banana Dish or Card Tray
- _____ 80. M - 2-5/8" Tall Kittens Whimsey, Vase or Toothpick?
- _____ 81. Rich Radium M - 6-1/4" Star/File Plate - Super
- _____ 82. P - Dugan CRE 6-1/4" Smooth Ray Plate - Jeweled Heart Exterior
- _____ 83. PO - 6-3/4" Dugan, Four Flowers Plate - Plain Exterior
- _____ 84. P - Dugan Cherries 6-3/8" CRE Plate - Jeweled Heart Exterior - Multi Electric
- _____ 85. PO - Dugan Cherries 6-3/8" CRE Plate - Jeweled Heart Exterior - Loaded with Opal
- _____ 86. P - 7" CRE Honeycomb Plate - Super Electric
- _____ 87. PO - 6-1/2" Wishbone/Spades Plate - Plain Ext. Loaded w/Opal
- _____ 88. Stunning P - 6-3/8" Wishbone/Spades Plate - Plain Ext. - WOW!
- _____ 89. PO - 6-1/2" CRE Ski Star/Compass Plate - Opal Galore
- _____ 90. P - Dugan 7-1/8" Grapevine/Lattice Plate - RADIUM ELECTRIC
- _____ 91. M - 6-1/2" Persian Garden Plate w/BW Exterior
- _____ 92. Outstanding B - Fenton 7-5/8" Pine Cone Plate
- _____ 93. Beautiful M - Fenton 6-1/4" Pine Cone Plate
- _____ 94. Dk M - Fenton 7-1/2" Lions Plate - One of the Finest - Lots of Detail
- _____ 95. M - 6-1/4" Persian Medallion Smooth Back Plate - Pink Highlights
- _____ 96. M - 7-3/4" Peacock/Dahlia Plate - Outstanding Rarity
- _____ 97. M - 7-5/8" Horse Medallion Plate - Pinks & Details
- _____ 98. P - 8" Imp. Heavy Grape Plate



- _____ 99. P - 9", 8 Sided, Scroll Embossed Plate - Reverse Starred Marie
- _____ **100. P - 10-3/4", 6 Ruffle Farmyard Bowl - Awesome (from the Seale Collection)**
- _____ 101. P - 9-1/4", 10 Ruffle Flowers/Frames Bowl - Elec. Satin
- _____ **102. Rare Dugan Celeste B - 8-1/2", 8 Ruffle Vintage Grape Bowl - Super**
- _____ 103. MMG - Westmoreland 8-1/4" Carolina Dogwood Bowl - Outstanding Example
- _____ **104. BO - Westmoreland 8-1/4" Daisy Wreath Bowl - Under Valued Beauty**
- _____ 105. Dk. Radium M - Imp. 474 Milk Pitcher
- _____ **106. M - Wine/Roses Cider Pitcher w/4 Goblets**
- _____ 107. Elec. P - Diamond/Lace Water Pitcher
- _____ **108. Outstanding P - Cambridge Inverted Thistle Water Pitcher - Rare**
- _____ 109. Gorgeous M - Fluffy Peacock Water Pitcher
- _____ **110. Matching M - Fluffy Peacock Tumblers**
- _____ 111. P - Fluffy Peacock Water Pitcher - Also Outstanding
- _____ **112. G - Cambridge Inverted Strawberry Tankard Water Pitcher - Another Rarity**
- _____ 113. B - Riihimaki Tiger Lily Water Pitcher - Extremely Difficult to Find
- _____ **114. B - Riihimaki Tiger Lily Tumbler**
- _____ 115. M - Tankard Milady Water Pitcher
- _____ **116. Fantastic M - Quill Water Pitcher**
- _____ 117. G - Fenton Paneled Dandelion Water Pitcher
- _____ **118. G - Fenton Paneled Dandelion Tumblers (Choice A, B, C, D)**
- _____ 119. M - N Grape Arbor Tankard Pitcher
- _____ **120. M - N Grape Arbor Tumblers (Choice A, B, C, D, E)**
- _____ 121. TOTAL ELEC. B - N Peach Water Pitcher
- _____ **122. B - Matching N Peach Tumbler**
- _____ 123. Beautiful G - N Singing Birds Water Pitcher
- _____ **124. G - N Singing Birds Tumbler**
- _____ 125. M - N Interior Rib Dandelion Tankard Pitcher - Stunning Radium
- _____ **126. M - N Dandelion Tumblers (Choice A, B, C, D, E)**
- _____ 127. Scarce Radium G - N Oriental Poppy Tankard Water Pitcher
- _____ **128. G - N Oriental Poppy Tumbler**
- _____ 129. Radium P - N Interior Rib Oriental Poppy Tankard Water Pitcher - Super
- _____ **130. P - N Oriental Poppy Tumbler - A Beauty**
- _____ 131. G - N Greek Key Water Pitcher - Amazing Color
- _____ **132. P - Mlbg. Diamonds Water Pitcher**
- _____ 133. Radium P - Mlbg. Diamonds Tumbler
- _____ **134. Radium P - Mlbg. Hanging Cherries Water Pitcher - Top of its Class**
- _____ 135. Great M - 9-1/2" Fenton Holly Plate
- _____ **136. Beautiful G - 9-1/2" Fenton Holly Plate**
- _____ 137. B - 9-1/2" Multi Electric Orange Tree Plate
- _____ **138. M - 9-1/2" Fenton Orange Tree Plate - Pinks & Blues**
- _____ 139. Elec. B - 8-1/4" ICS Orange Tree Bowl w/Trunk Center
- _____ **140. Great W - 8-3/4", 6 Ruffle Orange Tree Bowl w/Trunk Center**
- _____ 141. B - 8" ICS Fenton Peacock/Urn Bowl - Scarce Shape
- _____ **142. M - 9-1/4" Fenton Peacock/Urn Plate - Very Impressive**
- _____ 143. Pumpkin M - 8-3/4", 6 Ruffle Concord Bowl
- _____ **144. Radium P - Imp. 8-3/4" Ruffled Pansy Bowl**
- _____ 145. P - Imp. Star of David 8-1/2" Bowl - Radium Elec. Beauty
- _____ **146. P - 8-3/4" Imp. Grape, Ruffled Bowl - Top Shelf Example**
- _____ 147. Super M - Large Ruffled Panthers Ftd. Fruit Bowl
- _____ **148. M - 5" Round Ftd. Panthers Berry Dish**
- _____ 149. Radium B - Orange Tree Loving Cup
- _____ **150. W - Orange Tree Loving Cup - Find One Better**
- _____ 151. Radium M - Orange Tree Powder Dish w/Lid
- _____ **152. G - Inverted Strawberry Powder Dish w/Lid**
- _____ 153. M - Inverted Strawberry Powder Dish w/Lid
- _____ **154. Rare Stippled M - Grape/Cable Powder Dish w/Lid**
- _____ 155. Super P - Grape/Cable Dresser Tray
- _____ **156. Beautiful P - Grape/Cable Cracker Jar w/Lid**
- _____ 157. Scarce IG - N 5-3/4" ICS Grape/Cable Bowl
- _____ **158. Scarce B - N PCE Stippled Grape/Cable Bowl - Multi Electric**
- _____ 159. Elec. B - N Grape/Cable Bonbon
- _____ **160. Stunning G - N Stippled Grape/Cable (Vt.) Plate - Old Rose Distilling Adv. - Scarce**
- _____ 161. Beautiful IB - N 7" Tri-Cornered Drapery Bowl
- _____ **162. IB - N Poppy Pickle Dish - Shimmering w/Color**
- _____ 163. Outstanding Pastel M - N Poppy Pickle Dish
- _____ **164. Scarce B - N 8-1/2" Embroidered Mums Ruffled Bowl**
- _____ 165. G - N PCE Strawberry Bowl - Nifty One
- _____ **166. Beautiful IB - N PCE Nippon Bowl**
- _____ 167. P - N 9" Ruffled Rose Show Bowl - Elec. Highlites
- _____ **168. AO - N 9" Ruffled Rose Show Bowl - Lots of Pinks**
- _____ 169. Radiant M - N 9-1/4" Rose Show Plate
- _____ **170. G - N 9-1/2" Rose Show Plate - Great Emerald Highlites**
- _____ 171. Scarce Smoke - Imp. Vintage Grape 9-3/4" Tall Handled Basket
- _____ **172. Light M (Radium) - Stork in Rushes Whimsey (Violets Handled Basket)**
- _____ 173. Frosty W - N 8 Sided Bushel Basket
- _____ **174. Great IB - N 8 Sided Bushel Basket**
- _____ 175. G - N 8 Sided Bushel Basket
- _____ **176. Scarce AO - N Round Bushel Basket w/M Overlay**
- _____ 177. IG - N Round Bushel Basket
- _____ **178. Pastel AO - Fruits/Flowers Stemmed Bonbon**
- _____ 179. Pumpkin M - Fruits/Flowers Stemmed Bonbon
- _____ **180. Scarce IB - Fruits/Flowers Stemmed Bonbon**

- _____ 181. Elec. B - Fruits/Flowers Stemmed Bonbon
- _____ 182. **Rare IG - Fruits/Flowers Stemmed Bonbon**
- _____ 183. Beautiful W - Fruits/Flowers Stemmed Bonbon
- _____ 184. **Scarce Dk. IG - N 9-3/4" Grape/Cable Center Piece Bowl w/Sides Straight Up**
- _____ 185. IB - N 11" IB Grape & Cable Ruffled Ftd. Fruit Bowl
- _____ 186. **Scarce B - N 11" Peacock/Fountain Ftd. Fruit Bowl**
- _____ 187. W - N Peacock at Fountain Compote
- _____ 188. **Beautiful IB - N Peacock at Fountain Compote**
- _____ 189. Fantastic IG - N Peacock at Fountain Compote
- _____ 190. **M - N Peacock at Fountain Compote - Extra Pretty**
- _____ 191. P - N Fern Compote
- _____ 192. **AO - N Hearts/Flowers Compote - Always in Demand**
- _____ 193. M - N Hearts/Flowers Compote - Loaded w/Irid.
- _____ 194. **Rare G - N Hearts/Flowers Compote - Minor Dye Run**
- _____ 195. IB - N Hearts/Flowers Compote - Plain Ext.
- _____ 196. **Extra Nice IG - N Hearts/Flowers Compote - Plain Ext.**
- _____ 197. Elec. B - N Hearts/Flowers Compote
- _____ 198. **W - N Hearts/Flowers Ruffled Bowl - Loaded w/Blue**
- _____ 199. Scarce IG - N Hearts/Flowers Ruffled Bowl - Blue Hilites
- _____ 200. **G - N Hearts/Flowers Ruffled Bowl - Very Scarce Color**
- _____ 201. Pumpkin M - N Hearts/Flowers Ruffled Bowl
- _____ 202. **Dk. IB - N Hearts/Flowers Plate - Seldom Seen**
- _____ 203. Vibrant M - N Hearts/Flowers Plate
- _____ 204. **Giant P - N Plunger Base, 20-1/2" Tree Trunk Funeral Vase (HOT ITEM)**
- _____ 205. G - N 10-3/4" Tree Trunk Vase - Beautiful Magenta Irid.
- _____ 206. **P - N 10-1/2" Tree Trunk Vase - Beautiful Radium Irid.**
- _____ 207. Rare Elec. B - N 7-1/2" Squatty Tree Trunk Vase
- _____ 208. **Elec. B - N 11" Thin Rib Vase**
- _____ 209. Rare Sapphire - N 11" Thin Rib Vase
- _____ 210. **Frosty W - N 8-1/2" Drapery Vase - Tiny Toe Nip**
- _____ 211. Lime IG - N 8-1/2" Drapery Vase
- _____ 212. **AO - N Flared Out Daisy/Drape Vase - Great One**
- _____ 213. Beautiful G - N Corn Vase w/Floral Base
- _____ 214. **IG - N Corn Vase w/Floral Base**
- _____ 215. Amazing G - Mlbg. 9-3/4" Hobnail Swirl Vase
- _____ 216. **Spectacular G - Mlbg. 9-1/2" Ohio Star Vase - From the Whitley Collection**
- _____ 217. Fantastic Radium P - Mlbg. 6-1/2" Tulip Scroll Squatty Vase - 5-1/4" Opening
- _____ 218. **Rare P - Mlbg. Bulls Eye/Loop Vase - Radium Beauty**
- _____ 219. Great M - Mlbg. 10-1/4", 3/1 Edge Seaweed Bowl - Super Satin
- _____ 220. **P - Mlbg. 7-3/4", 6 Ruffle Little Stars Bowl - Satin Beauty**
- _____ 221. Scarce G - Mlbg. Square Radium Zig Zag Bowl
- _____ 222. **G - Mlbg. Radium Sherbet Shape Leaf/Little Flowers Compote - WOW**
- _____ 223. P - Mlbg. Hobnail Swirl Rosebowl - Top Notch Example
- _____ 224. **P - Mlbg. Hobnail Cuspidor - Radium Beauty**
- _____ 225. P - Mlbg. Seacoast Pin Tray - Very Desirable
- _____ 226. **G - Mlbg. Sunflower Pin Tray - Also Desirable**
- _____ 227. P - Mlbg. Radium 5-1/2" Flared Peacock Proof Little Bowl
- _____ 228. **G - Mlbg. ICS 6" Peacock Radium Bowl**
- _____ 229. Lav.? - Mlbg. 6" Peacock/Urn Small Vt. Bowl (4 Tail Feathers)
- _____ 230. **Fabulous P - Mlbg. Ruffled Strawberry Wreath Compote**
- _____ 231. P - Mlbg. 10-1/4", 6 Ruffle Rosalind Bowl - Beautiful Satin
- _____ 232. **Lav.? - Mlbg. 7-1/4", 3/1 Edge Grape Wreath Bowl w/Feathered Leaf Center**
- _____ 233. P - Radium Mlbg. 8-1/2" ICS Peacock Mystery Bowl
- _____ 234. **Spectacular P - Mlbg. Deep 8-3/4" ICS Large Peacock Mold Bowl**
- _____ 235. Radium G - Mlbg. 7-1/4", 3/1 Edge Peacock Shotgun Bowl
- _____ 236. **Scarce G - Mlbg. 9-1/4" ICS Many Stars Bowl - Radium**
- _____ 237. G - Mlbg. 7-3/4" ICS Big Fish Bowl - Seldom Seen
- _____ 238. **Radium P - Mlbg. 9-1/2" ICS Fleur De Lis Collar Base Bowl**
- _____ 239. Outstanding W - Dugan 11-1/2" ICS Persian Garden Bowl - Loaded w/Irid.
- _____ 240. **W - N 9-3/4" ICS Peacock at Urn Master Bowl - Loaded w/Lav. Irid.**
- _____ 241. W - N 5-3/4" ICS Peacock at Urn Berry Bowl
- _____ 242. **IB - N 10-3/8" ICS Peacock at Urn Master Bowl - Loaded w/Irid.**
- _____ 243. IB - N 5-1/2" ICS Peacock at Urn Berry Bowl
- _____ 244. **Amazing Dk. IG - N 10" ICS Peacock at Urn Master Bowl - Fantastic Blue Irid.**
- _____ 245. IG - N 5-1/2" ICS Peacock at Urn Berry Bowl
- _____ 246. **Rare G - N 10" ICS Peacock at Urn Master Bowl - Seldom Seen**
- _____ 247. G - N 5-3/4" ICS Peacock at Urn Berry Bowl
- _____ 248. **P - N 10" ICS Peacock at Urn Master Bowl (A Great One)**
- _____ 249. M - N 10", 8 Ruffle Peacock at Urn Large Bowl (Rare Beautiful Shape)
- _____ 250. **Spectacular G - 9-1/4" Fenton Thistle Plate - This is it! Very Rare Find!**
- _____ 251. G - Fenton Peacock Tail, 6", Ruffled w/Advert. 1910 General Furniture Co.
- _____ 252. **A - Mlbg. 7-1/2", 6 Ruffle Radium Courthouse Bowl**
- _____ 253. A - Mlbg. 6", 6 Ruffle Isaac Benesch/Sons Bowl - Advert. is Hot
- _____ 254. **A - 6" Paradise Sodas Seasons Greeting Fenton Plate**



- _____ 255. B - 6-1/2", ICS, 1911 Atlantic City Elks Bowl - Few Known
- _____ 256. **M - 8-3/4" Ten Ruffle Brooklyn Bridge Bowl**
- _____ 257. A - N 6-1/4" Dreibus Parfait Sweets Bowl - Unique Find
- _____ 258. **A - N 6-3/8" Fern Brand Chocolates Hand Grip Plate**
- _____ 259. A - N 6" Ballard - Merced, Cal. Adv. Ruffle Bowl
- _____ 260. **M - 9" Spector's Department Store Adv. Plate - Opportunity Time**
- _____ 261. Dark M - N PCE Good Luck Bowl
- _____ 262. **Fabulous AO - N Ruffled Good Luck Bowl - Stretch Multi Irid. Loaded w/Opal - Top Shelf Piece**
- _____ 263. G - N PCE Good Luck Bowl - Scarce BW Ext. - Very Nice One
- _____ 264. **Scarce N Blue - Stippled Rib Back Good Luck Flat Plate**
- _____ 265. G - N 9" Good Luck Vt. Plate w/BW Ext. - Limited Find
- _____ 266. **B - N Flat 9-1/4" Poppy Show Plate - Another Winner**
- _____ 267. M - Fishermans Mug - As Good as They Get
- _____ 268. **BA - Heron Mug - Fantastic Radium Irid. Color Plus**
- _____ 269. Pumpkin M - N Dandelion Mug - Pinks & More Pinks
- _____ 270. **AO - N Dandelion Mug - Soft Beautiful Marigold Overlay**
- _____ 271. IB - N Dandelion Knights Templar 1912 Mug
- _____ 272. **Blue - N Dandelion Mug - Electric Hilites**
- _____ 273. Green - N Dandelion Mug - Seldom Seen
- _____ 274. **Cherry Red Base - 9", 8 Ruffle Collar Base Peacock & Grape Bowl**
- _____ 275. Red - 5-3/4" Ruffled Blackberry Spray Hat - 2 Sets of Berries
- _____ 276. **Show Stopper Red - Little Flowers 10" Ruffled Bowl - A Great Rarity**
- _____ 277. Red - ICS Collar Base Dragon & Lotus Bowl - Great
- _____ 278. **Red - 9" Ruffled Fenton Holly Bowl - Statement Maker**
- _____ 279. B - 9-1/2" Heart and Vine Plate - Super Plate
- _____ 280. **Pastel AO - N Peacocks Ruffled Bowl - Opal, Opal & More**
- _____ 281. Scarce Blue - N Peacocks Ruffled Bowl - Proud Birds
- _____ 282. **Quality IG - N Peacocks Ruffled Bowl**
- _____ 283. Dandy W - N PCE Peacocks Bowl - Smooth Back
- _____ 284. **Green - N PCE Peacocks Bowl - Seldom Seen**
- _____ 285. ICE Blue - N PCE Peacocks Bowl w/ Rib Ext.
- _____ 286. **Blue - N Peacocks Rib Back Plate - Multi Electric**
- _____ 287. M - N Peacocks Plate - Loaded w/Pinks
- _____ 288. **Purple - N Peacocks Plate - Elec. Blue Irid. Plus**
- _____ 289. Ice Green - N Peacocks Plate - Flat Dandy
- _____ 290. **Pastel Clam Champagne - N Peacocks Plate - Neat Color**
- _____ 291. Scarce Green - N Peacocks Plate - Quality Example
- _____ 292. **Peach Opal - Dugan Fish Net Epergne - 10 Ruffles - Scarce**
- _____ 293. Purple - N Wishbone Epergne - No Upgrade Here
- _____ 294. **Spectacular Purple - Wishbone & Spades 10-3/4" Chop Plate**
- _____ 295. Peach Opal - Wishbone & Spades 10-5/8" Chop Plate - 2" of Opal
- _____ 296. **Amber - Imperial 10-3/4" Hattie Chop Plate - Extreme Color**
- _____ 297. Purple - 11" Imperial Heavy Grape Chop Plate - Shimmering Grapes
- _____ 298. **Purple - Nu-Art Signed Homestead Chop Plate - Investment Time**
- _____ 299. Amethyst - Flat 11" Garden Path & Variant Chop Plate
- _____ 300. **Class Act Purple - 12-7/8" Persian Garden Chop Plate - WOW!**
- _____ 301. W - Grape Delite Footed Rosebowl
- _____ 302. **The Prettiest P.O. - Honeycomb Rosebowl**
- _____ 303. Dark Radium Marigold - Sowerby Diving Dolphins Rosebowl
- _____ 304. **G - N Fine Cut & Roses Rosebowl - Pl. Int.**
- _____ 305. AO - N Drapery Rosebowl
- _____ 306. **Rare White - N Drapery Rosebowl - Smooth Edge**
- _____ 307. AO - N Leaf Beads Rosebowl - Always Desirable
- _____ 308. **AO - N Beaded Cable Rosebowl - Pinks & Blues**
- _____ 309. Scarce M - N Stippled Singing Birds Mug
- _____ 310. **Rare G - N Stippled Singing Birds Mug**
- _____ 311. Pastel Lavender - N Singing Birds Mug
- _____ 312. **Fabulous Pastel Aqua Opal - Singing Birds Mug**
- _____ 313. G - N Singing Birds Mug - Seldom Seen
- _____ 314. **White - N Singing Birds Mug - Rare Color**
- _____ 315. Electric Blue - N Singing Birds Mug
- _____ 316. **Purple - Ivy Town Pump - A Collectors Must**
- _____ 317. W - Dugan Dahlia Cream & Sugar Set w/Red Flowers
- _____ 318. **Super Marigold - N Stippled Three Fruits Plate**
- _____ 319. Green - N Three Fruits Plate - Smooth Back Emerald Irid.
- _____ 320. **Elec. Blue - N Stippled Three Fruits Plate**
- _____ 321. M - Orange Tree Hat Pin Holder - Irid. Top to Bottom
- _____ 322. **Scarce M - Fenton Butterfly & Berry Hat Pin Holder**
- _____ 323. BA - Formal Dugan Hat Pin Holder
- _____ 324. **Green - N Grape & Cable Hat Pin Holder - Super**
- _____ 325. Dark M - Grape & Cable Hat Pin Holder
- _____ 326. **Rare Dk. M - Grape & Cable Banded Hat Pin Holder**
- _____ 327. Purple - Grape & Cable Hat Pin Holder - Old Favorite

GREAT HAT PIN COLLECTION

- 328. BA - Flying Bat Hat Pin
- 329. BA - Flower Arcs Hat Pin
- 330. BA - Basketweave Hat Pin
- 331. BA - Triad Hat Pin
- 332. BA - Vieling Hat Pin
- 333. BA - Star Center Hat Pin
- 334. BA - Moire Beetle Hat Pin
- 335. BA - Basket Flower Hat Pin
- 336. BA - Double Beaded Fringe Hat Pin
- 337. BA - Prism Sphere Hat Pin
- 338. BA - Black Beaded Fringe Hat Pin
- 339. BA - Six Plums Hat Pin
- 340. BA - Big Butterfly Hat Pin
- 341. BA - Throw Pillow Hat Pin
- 342. Saph. - Bee and Honeycomb Irid. - Very Light
- 343. Red - Spider Hat Pin - Light Irid.
- 344. Chocolate - Waves Hat Pin
- 345. Black - Non Irid. Strawberry Hat Pin
- 346. Red - Rooster Hat Pin
- 347. Yellow Amber - Rooster Hat Pin
- 348. Lav. Amber - Rooster Hat Pin
- 349. Sapphire - Rooster Hat Pin
- 350. Teal - Rooster Hat Pin
- 351. Black A - Top of the Morning Hat Pin
- 352. Black A - Faceted Dome Hat Pin
- 353. Black A - Tufted Throw Pillow Hat Pin
- 354. Black A - Bars/Beads Hat Pin
- 355. Black A - Butlers Mirror Hat Pin
- 356. Black A - Hearts/Cross Hat Pin
- 357. Black A - Dimples/Brilliance Hat Pin
- 358. Black A - Spiral Dance Hat Pin
- 359. Black A - Coolie Hat Hat Pin
- 360. BA - Swirling Tears Hat Pin
- 361. Black - Non Irid. Pinwheel Leaf Hat Pin
- 362. BA - Beaded Purse w/Decorative Clasp
- 363. BA - Beaded Fringe Purse
- 364. Rhinestone/Carnival Bracelet
- 365. BA - Australian Magpie 5-1/2", 8 Ruffle Bowl

SPECIAL NOTE:

NO SUNDAY CALLS, PLEASE!
Winning Absentee Bidders will be contacted
Monday through Wednesday of the week following
the Auction! Thank You!

SEND ALL MAIL TO:

18350 Hunters Ridge Ct.
Boonville, MO 65233

- 366. Contemporary Red - ICGA, 2002, VIP Frolicking Bears Whimsey
- 367. Contemporary Red - HOACGA, 1993, 6-3/4" Good Luck Plate
- 368. Contemporary Teal - HOACGA, 1989, Good Luck Bell

SELECTION OF BOOKS

- 369. Bill Edwards 2nd Ed. H.B. Carnival Glass Book
- 370. Bill Edwards 4th Ed. H.B. Carnival Glass Book
- 371. Bill Edwards 5th Ed. H.B. Carnival Glass Book
- 372. Bill Edwards 7th Ed. Paper Price Guide
- 373. Bill Edwards 8th Ed. Paper Price Guide
- 374. Marion T. Hartung, H.B., Northwood/Pattern Glass in Color
- 375. Sherman Hand, H.B., 1978 Carnival Glass Encyclopedia
- 376. Marion T. Hartung, H.B., 1967 Carnival Glass in Color
- 377. Tom Sprain, 1993 Carnival Glass Price Guide
- 378. Volume 1, The Glass Candlestick Book - H.B.
- 379. 2001 Paper Back Glass Candleholders

👉 AUCTION CALENDAR OF EVENTS

Saturday, July 15 @ 9:00 a.m.
8th Annual July Extravaganza

**Friday Evening, August 18 &
Saturday, August 19**
at Boonville, MO
*The Lifetime Carnival Glass Collection of
Winnie Brim of Kansas*

Saturday, September 23 @ 9:00 a.m.
at Boonville, MO
Carnival Glass Collection

**Friday, October 13 @ 6:30 pm and
Saturday October 14 @ 9:00 am**
*The 25th Air Capital Carnival Glass
Convention - Held in Wichita, Kansas*

Saturday, November 4 @ 9:00 a.m.
at Boonville, MO
Carnival Glass Collection

WATCH: 👉 Web Site: www.AWK.SHN.com

www.AWK-SHN.com
MICKEY REICHEL
ANTIQUE & AUCTION, L.C.
 18350 HUNTERS RIDGE CT.
 BOONVILLE, MO 65233

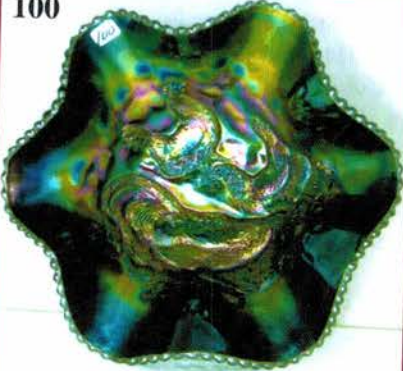
PRESORTED
 FIRST CLASS MAIL
 US POSTAGE PAID
 SEDALIA, MO
 PERMIT 217

FIRST CLASS MAIL

SPECIAL INVITATION TO:

RETURN SERVICE REQUESTED

100



8*23*****MIXED AADC 650

LEE MARKLEY

PO BOX 306

MENTONE, IN 46539-0306



283



265



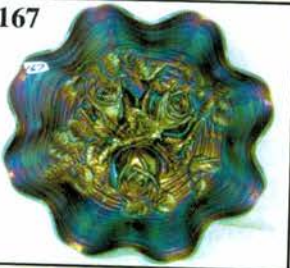
319



199



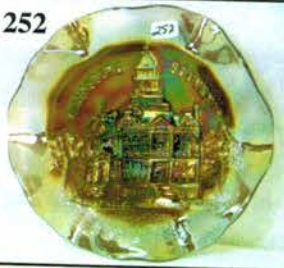
167



92



252



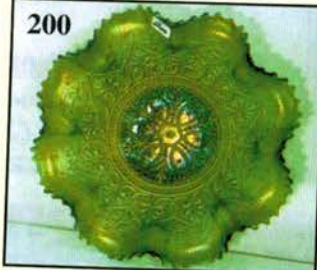
248



258



200



279



264

