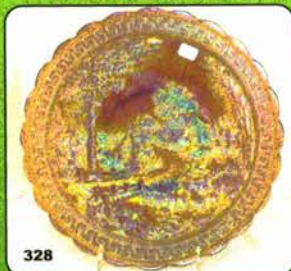


Lincoln Land Carnival Glass Club Convention

AUCTION

Saturday, June 3rd, 2006 -- 9:30 A.M.



Best Western Milwaukee Airport Hotel and Convention Center
5105 South Howell Avenue
Milwaukee, Wisconsin
(414) 831-3655 for reservations

JIM & JAN SEECK

Seeck Auctions

P.O. Box 377
Mason City, Iowa 50402

641-424-1116



Best Western Airport Hotel -- Milwaukee, Wisconsin



NO BUYER'S PREMIUM
OPEN TO THE PUBLIC

Don't forget to check out our website for lots of pictures!

www.seeckauktion.com

Also, please email us and we will put you on our email mailing list for auction notices.

Seeck Auctions is pleased to be heading to Milwaukee for the Lincoln Land Club convention. It has been awhile since we have been to the convention but seems like just yesterday. We have a great auction for all with a selection of items from the Loescher Collection from Wisconsin and also the Pollock collection from Pennsylvania. There is a nice variety of rare and beautiful pieces making up a super auction of glass. Hope to see you all there!

Lincoln Land Club Convention info: Contact Dick or Sherry Betker at 414-425-0632 or duganblue@aol.com
Talk to Jean at the hotel to make your reservations at: 414-831-3655 or 877-461-8537 and ask for the Lincoln Land Room Rate.

Terms: Cash or Check, VISA and MasterCard accepted w/proper ID. **3% Clerking Fee** on all purchases except for payment of cash or check. Announcements made day of sale take precedence over any printed information.

Visit the Lincoln Land Carnival Glass Club Website: <http://www.llcgc.homestead.com>

ABSENTEE BID POLICY

1. Write-in bids will be accepted by sending the numbers of the item(s) desired and the amount bid on each to:
Seeck Auctions, PO Box 377, Mason City, Iowa 50402.
2. You may call in your bids previous to the auction at (641)424-1116. (this is not live phone bidding)
3. You may email your bids to us: **jimjan@seeckauktion.com** Include the numbers of the item(s) you would like to bid on and amount bid on each, please include your telephone number.
4. There is a \$5 handling charge for each successful bid. Shipping and insurance charges are additional.
5. Bidders will be notified by phone/email if their bid(s) are successful. This will be done 1 - 3 days after the auction.
6. Please have all bids in by **Tues., May 30th.** All bids (by mail, phone or **email**) after this date may not be carried out.
7. Please place bids in the following increments: \$1 to \$300 - \$5 increments \$300 up - \$25 increments.
8. **If you do not receive an item that sold for less than your bid, assume we cancelled your bid because the piece of glass had below average color, manufacture problem, damage or was not listed correctly.**
9. Auction results are posted on our website within 5 days of the auction (depending on drive time home from the sale.)
Also results are available in many of the club newsletters.

- ___ 1. Kittens cups & saucers (3) - marigold - choice
 ___ 2. Kittens tall toothpick or short vase, 2 3/4" - marigold
 ___ 3. Kittens toothpick - marigold
 ___ 4. Kittens cereal bowl w/two sets of kitties - marigold - scarce
 ___ 5. Kittens 4 sided dish - marigold - two sets of kitties
 ___ 6. Kittens two sides up dish - amethyst - scarce color & pretty
 ___ 7. Kittens two sides up dish - blue - nice
 ___ 8. Kittens two sides up dishes (2) - marigold - choice
 ___ 9. Kittens toothpick - blue - nice
 ___ 10. Kittens 4 sided dish - amethyst - scarce color
 ___ 11. Kittens 4 sided dish - blue - silvery
 ___ 12. Kittens 4 sided dishes (3) - marigold - choice
 ___ 13. Kittens ruffled dish - blue - scarce, silvery
 ___ 14. Kittens ruffled dishes (2) - marigold - choice
 ___ 15. Kittens cereal bowl - blue - very pretty, scarce
 ___ 16. Kittens cereal bowls (2) - marigold - choice
 ___ 17. Pastel Swan salt - marigold
 ___ 18. Pastel Swan salt - ice green
 ___ 19. Wine glass w/Berry pattern, "Souvenir of Suring, WIS" - marigold
 7750 20. Tree Trunk 13 1/2" elephant foot vase - purple - spectacular, maybe the nicest one I've ever had the opportunity to sell
 ___ 21. Miniature Basketweave Basket - marigold
 255 22. Imperial Grape carafe - purple - fantastic irid!
 ___ 23. Chrysanthemum lg size IC shaped bowl - blue - bit silvery
 ___ 24. Australian Magpie 8 ruffled bowl - purple - very pretty irid., nick on edge
 ___ 25. Australian Swan ruffled bowl - purple - nice
 ___ 26. Two Fruits divided bon bon - marigold - chip on back edge
 550 27. Captive Rose 9" plate - amethyst - super pretty for this rare plate
 425 28. Captive Rose 9" plate - blue - as nice as these get, super
 ___ 29. Fisherman's mug - purple
 400 30. Vineyard 6 pc. water set - purple - super pretty for these rare sets
 ___ 31. Lion 7" ruffled bowl - blue - scarce color
 50 32. Vintage 9" ruffled bowl - Persian blue - pretty irid., extremely rare, highly sought after
 ___ 33. Persian Medallion lg size crimped edge compote - marigold
 400 34. Fruits & Flowers bon bon - sapphire - super pretty, has heat check in handle
 ___ 35. Orange Tree standard size mug - aqua - scarce color
 ___ 36. Orange Tree standard size mug - amethyst - nice, scarce color
 400 37. Orange Tree 9" plate - blue - very pretty, scarce
 ___ 38. Orange Tree w/trunk 9" plate - marigold - nice
 ___ 39. Orange Tree 9" plate - white - large chip off edge
 ___ 40. Dugan 1 lb. candy jar - red
 225 41. Grape & Cable hatpin holder - white - frosty & pretty, cracked
 42. Grape & Cable hatpin holder - green - very pretty
 ___ 43. Grape & Cable hatpin holder - purple - minor nick on foot
 ___ 44. Garland rose bowl - marigold
 ___ 45. Wide Panel hdd basket - purple - scarce
 ___ 46. Drapery candy dish - white - pretty
 ___ 47. Venetian rose bowl - green - pretty irid., scarce & desirable
 ___ 48. Diamond Points 10" vase - amethyst
 ___ 49. Diamond Points 11" vase - marigold
 2100 50. N's Peacock at Urn master IC bowl - blue - electric & fantastic, this thing is gorgeous!
 ___ 51. N's Peacock at Urn IC sauce - blue - almost could be a deep bowl, kind of different, pretty
 ___ 52. N's Peacock at Urn IC sauce - white - frosty & pretty
 ___ 53. Swan cvd dish - marigold - chip on rim of base
 ___ 54. Grape & Cable 9" plate w/BW back - purple - nice
 ___ 55. Grape & Cable 9" plate w/BW back - green - pinpoint on one point
 ___ 56. Grape & Cable 9" plate w/plain back - marigold - pretty
 ___ 57. Peacock & Grape ruffled bowl - marigold
 425 58. M'burg Trout & Fly 3 in 1 edge bowl - green - satin & nice
 ___ 59. Flowers & Frames dome ftd ruffled bowl - purple
 ___ 60. Pinecone 7" IC shaped bowl - blue
 300 61. Persian Garden chop plate - purple - extremely rare plate, has straight crack from center flower to edge, great shelf piece
 2000 62. Persian Garden chop plate - peach opal - extremely rare color, minor chips on base, fabulous
 ___ 63. M'burg Blackberry Wreath 7" 3 in 1 edge bowl - amethyst - satin, nice
 ___ 64. Fenton's Peacock at Urn 9" plate - blue - very pretty, scarce, minor pinpoint on bead of urn
 ___ 65. Fenton's Peacock at Urn 9" plate - marigold - scarce
 ___ 66. Garden Path Variant rose bowl - marigold - very rare rose bowl - light green base color
 ___ 67. Basketweave Open Edge ruffled basket - red
 ___ 68. Basketweave Open Edge ruffled basket - powder blue
 950 68a. Rustic 18 1/2" vase - blue - very scarce & very nice
 250 69. April Showers 11" vase - white - scarce, nice
 ___ 70. April Showers 11" vase - green - has Peacock Tail interior
 ___ 71. April Showers 11 1/2" vase - amethyst - Peacock Tail interior
 ___ 72. April Showers 12" vase - blue
 600 73. Peacocks 9" plate w/ribbed back - ice blue - very scarce & highly desirable
 300 74. Peacocks 9" plate w/ribbed back - smokey lavender - super pretty & extremely rare, a great plate!
 725 75. Peacocks 9" plate w/ribbed back - horehound - super nice, rare
 500 76. Peacocks 9" plate w/ribbed back - green - scarce, nice
 550 77. Peacocks 9" plate w/ribbed back - blue - has electric highlights, scarce
 ___ 78. Peacocks 9" plate w/ribbed back - purple - pretty
 ___ 79. Peacocks 9" plate w/ribbed back - marigold - dark & fabulous

80. Peacocks 9" plate w/ribbed back - lime green - nick on one point
81. Peacocks 9" plate w/ribbed back - white - nice
82. Peacocks 9" plate w/ribbed back - marigold - also nice
83. Lotus & Grape ruffled bowl - marigold
84. Ripple 18" funeral vase - green - scarce vase, minor nick on rib towards bottom
85. M'burg Peacock 6" plate - amethyst - super pretty, very nice plate
86. Estate mug w/"Souvenir Oakford Park" - marigold
87. Bo Peep mug - marigold
- 300 88. Butterfly & Berry 7 pc. berry set - blue - scarce
89. Double Star 7 pc. water set - green - scarce & nice
90. Little Fishes ftd ruffled sauce - amethyst
91. Good Luck 9" plate w/BW back - purple - scarce
- 300 92. Good Luck 9" plate w/BW back - marigold - flat, pretty, scarce
93. Cosmos & Cane tumblers (2) - honey amber - choice
94. Ribbon Tie 3 in 1 edge bowl - blue
95. Wishbone & Spades 6" plate - purple - nice, extra flat
96. Big Basketweave hdd basket - marigold
97. Grape Arbor 7 pc. tankard water set - marigold - pitcher is dark & fantastic
98. Singing Birds mug w/paper label on bottom "The Crown Mfg. Co. N.Y." - amethyst
- 525 99. Grape & Cable fernery - white - extremely rare & nice, a beauty
100. Poinsettia milk pitcher - marigold - nice
101. Beaded Cable rose bowl - aqua opal - nice
102. Beaded Cable rose bowl - marigold
103. Beaded Cable rose bowl w/rayed interior - green
- 20,000 104. M'burg Mitered Ovals vase - green - fantastic multi-colored irid. on an extreme rarity, radium & super!
105. Vintage CRE bowl - amethyst
106. Grape & Cable powder jar - white - 4" crack in lid, rare
107. Grape & Cable powder jar - marigold - minor nick on lid
- 475 108. Peacocks PCE bowl w/plain back - white - frosty & pretty
109. Panther ftd ruffled master berry bowl - marigold
- 1675 110. Blackberry Spray JIP CRE hatshape - aqua opal - fantastic irid.
111. Persian Medallion bon bon - lime green - scarce color
112. Hearts & Flowers ruffled bowl w/ribbed back - white - frosty & super
113. Grape Arbor ftd fruit bowl - marigold
114. Fenton's Fine Rib 9" vases (2) - red - both super, choice
115. Fenton's Fine Rib 10" vase - blue
- 450 116. Grape & Cable dresser tray - white - very pretty & rare color
117. Grape & Cable dresser tray - purple - nice
118. Grape & Cable dresser tray - marigold
119. Daisy & Plume ftd banana boat shaped dish - peach opal
120. Daisy & Drape flared out vase - aqua opal - scarce & nice
- 500 121. Daisy & Drape flared out vase - blue - very pretty & rare color
122. Daisy & Drape turned in vase - purple - super pretty, polished on one toe
- 122a. Daisy & Drape turned in vase - white - turned in more than most
123. Cherry Chain 6" plate - blue - nice
- 350 124. Grape & Cable water pitcher - ice green - extremely rare, a top rarity, has large crack around the middle
- 900 125. Grape & Cable water pitcher - smoke - extremely rare in this color plus pretty
126. Grape & Cable 5 pc. water set - marigold - chip on base of pitcher
127. M'burg Grape Wreath Variant 8" ruffled bowl - amethyst - radium
128. Grape & Cable master IC bowl - purple - scarce
129. Rustic 17" mid-size vase - amethyst
130. Persian Medallion bon bon - celest blue - extremely rare & highly desirable, chip on edge
131. Ski Star ruffled bowl - peach opal - chip on edge
132. Tree Trunk 10 1/2" vase - ice blue - scarce
133. Tree Trunk 10" vase - white - nice
134. Tree Trunk 9" vase - purple
- 475 135. Stippled Three Fruits spt ftd ruffled bowl - aqua opal - has unusual textured type butterscotch irid., very pretty
- 450 136. Stippled Three Fruits spt ftd ruffled bowl - aqua opal - pastel & nice
137. Wreathed Cherry banana boat sauce - peach opal - pretty
138. Paneled Dandelion tankard water pitcher - amethyst - super pretty, a very nice example for these
- 138a. Paneled Dandelion tumbler - amethyst
139. Fine Cut & Roses rose bowl - white - very pretty, has a tinge of sun color
140. Fine Cut & Roses rose bowl - green - super pretty
141. Fine Cut & Roses rose bowl - purple
142. Grape & Cable deep round bowl - red - has manufacture split in seam of base
- 450 143. Acorn Burrs 7 pc. water set - purple - scarce & highly desirable
144. Octagon wine bottle - marigold
- 425 145. Wreath of Roses flared out punch bowl & base w/Vintage interior - marigold - hard to find flared out version
146. Fenton Peacock at Urn ruffled compote - blue - nice
147. Fenton Peacock at Urn goblet shaped compotes (2) - choice
- 6500 148. Peacock at the Fountain fruit bowl - aqua opal - extreme rarity, super pretty, has 1" heat check in base, a great opportunity
149. Peacock at the Fountain fruit bowl - marigold - super pretty
150. Leaf Swirl compote - purple
- 325 151. Contemporary Fenton Butterfly & Tulip 4 ruffled bowl - sapphire - super pretty, donation to the club

- 325 152. Contemporary Fenton Butterfly & Tulip ruffled bowl - lavender - a donation to the club
 ___ 153. 1970 Fenton Craftsman plates (2) - choice
 ___ 154. 1970, 71 & 74 Fenton Christmas plates - choice
 ___ 155. Fenton Craftsman plate w/no writing on back - rare
 ___ 156. 1968 ICGA Calendar plate
 ___ 157. Windmill oval plate - blue - marked IG
 ___ 158. 1967 ACGA Robin Mug - red, 1978 HOACGA small mug - red, 1995 HOACGA small mug - celest blue, 1977 Lincoln Land small mug - blue, 1978 Lincoln Land mug - vaseline - choice
 ___ 159. 1982 Lincoln Land rose bowl - aqua opal
 ___ 160. 1982 ICGA Frolicking Bears spittoon - red
 ___ 161. 1981 ICGA Frolicking Bears spittoon - aqua opal
 ___ 162. 1983 ICGA Frolicking Bears spittoon - vaseline opal
 ___ 163. Fenton Butterfly small size tray - ice blue - contemporary
 ___ 164. Fenton Ring Optic 13" vase - pink stretch
 ___ 165. Fenton Flower pot & under plate - pink stretch - under plate has small chip
15 166. **Acorn Burrs 8 pc. punch set - green - fantastic, highly desirable**
 ___ 167. Green tumblers including: Greek Key; Double Star; Raspberry; Fluffy Peacock; Grape & Cable; Paneled Dandelion - choice
375 168. **Hearts & Flowers ruffled compote - blue - electric & super!**
 ___ 169. **Hearts & Flowers ruffled compote - aqua opal - butterscotch, scarce**
 ___ 170. Vintage 6" IC shaped sauce - amethyst
800 171. **Leaf Chain 9" plate - blue - super, rare & desirable**
 ___ 172. Leaf Chain 9" plate - clambroth - minor chips on edge, lack irid.
 ___ 173. Floral & Grape 5 pc. water set - blue - pretty
 ___ 174. Grape & Cable cologne bottle - purple - bottom of stopper repaired
 ___ 175. **Banded Grape & Cable cologne bottle - marigold - a great example**
 ___ 176. **Dandelion Knights Templar mugs (2) - ice blue - both a bit silvery, rare, choice**
 ___ 177. **Dandelion Knights Templar mug - marigold - pretty, scarce**
 ___ 178. Knotted Beads 9" vase - blue
400 179. **Hearts & Flowers 9" plate w/ribbed back - marigold - hard to find plate, highly desirable**
 ___ 180. Horse Medallion ftd JIP bowl - blue
 ___ 181. **M'burg Trout & Fly IC shaped bowl - green - radium & super, minor pinpoint on base, who cares**
 ___ 182. Marigold perfume bottles (5) - choice
1100 183. **Peacock Tail & Daisy ruffled bowl - blue milk glass - only one I've heard of, Westmoreland, very desirable, chip on base**
 ___ 184. Stag & Holly spt ftd ruffled bowl - amethyst
 ___ 185. Stag & Holly spt ftd ruffled bowl - marigold
 ___ 186. **Stippled Grape & Cable Variant 9" plate - purple - scarce plate stippled**
 ___ 187. **Stippled Grape & Cable Old Rose Distillery 9" plate - green - scarce**
 ___ 188. Grape & Cable sweetmeats (2) - purple - choice
 ___ 189. M'burg Peacock small berry bowl - amethyst - radium, nice
400 190. **M'burg Rays & Ribbons crimped edge bowl - amethyst - radium & fantastic!**
 ___ 191. Purple tumblers including: Imperial Flute #1; Oriental Poppy; Beaded Shell; N's; Peacock at the Fountain; Grape Arbor; Wishbone; Heavy Iris; Diamond Lace; Rambling Rose; Grape & Cable - choice
 ___ 192. N's Bushel Basket - ice green
 ___ 193. N's Bushel Basket - blue
 ___ 194. N's Bushel Basket - marigold
 ___ 195. **Orange Tree loving cup - blue - super pretty**
 ___ 196. Pony 6 ruffled bowl - marigold
 ___ 197. **Daisy & Plume ftd rose bowl - ice blue - super pretty, typical minor nicks on ribs of feet, rare color**
 ___ 198. Sailboat ruffled sauce - aqua - scarce color
450 199. **N's Peacock at the Fountain 5 pc. water set - blue - scarce & nice**
 ___ 200. Grape & Cable single candlestick - purple - nice
 ___ 201. Ski Star dome ftd handgrip plate - peach opal - very pretty
475 202. **Poppy Show 9" plate - ice blue - super pretty, has minor buff spot on poppy**
235 203. **Poppy Show 9" plate - white - also super pretty**
600 204. **Poppy Show 9" plate - marigold - dark & nice, a real beauty, extra flat**
 ___ 205. Corinth 8" vase - aqua
400 206. **Orange Tree w/trunk IC shaped bowl - green - fabulous irid.!**
 ___ 207. Miniature Intaglio basket w/wire handle, "Souvenir of Black River Falls, WIS." - peach opal
 ___ 208. Acanthus chop plate - marigold - nice
 ___ 209. Blue tumblers including: N's Peacock at the Fountains (2); Blackberry Block; Peach; Grape & Gothic Arches; Milady; Enameled Cherries; Ten Mums; Ftd Orange Tree; Stork & Rushes - choice
 ___ 210. Orange Tree Punch bowl top - blue - super
 ___ 211. Fanciful 9" plate - blue - silvery
 ___ 212. **N's Town Pump - purple - silver/gold irid.**
 ___ 213. Basketweave Open Edge 2 sides up basket - red
 ___ 214. Basketweave Open Edge 2 sides up basket - aqua
1000 215. **M'burg Peacock at Urn giant ruffled compote - amethyst-extremely rare & highly desirable, nice piece**
 ___ 216. Orange Tree shaving mug - blue
 ___ 217. Orange Tree shaving mug - marigold
500 218. **Stippled Good Luck 9" plate w/ribbed back - marigold - has stretchy irid., scarce & nice**
 ___ 219. Marigold tumblers including: Fashion; Rambling Rose; Unshod; Vineyard; Octagon; Blackberry Block; Harvest

- Flower; Waterlily; Four-Seventy-Four; Soda Gold;
Imperial Grape; Floragold; Tiger Lily; Dandelion; Scale
Band - choice
- ___ 220. Round Up 3 in 1 edge bowl - blue - nice, scarce in blue
- ___ 221. Leaf & Beads rose bowl - aqua opal - butterscotch
- ___ 222. Leaf & Beads rose bowl w/Sunflower interior - purple
- ___ 223. Leaf & Beads rose bowl w/rayed interior - green
- ___ **224. Persian Garden fruit bowl w/base - peach opal - very scarce & desirable, nice**
- ___ 225. Dragon & Lotus ruffled bowl - blue
- ___ 226. Dragon & Lotus ruffled bowl - marigold - has yellow irid., super
- ___ **227. Stippled Three Fruits 9" plate w/ribbed back - blue - very pretty example for these**
- ___ 228. Persian Medallion 6" plate - blue
- ___ **229. Brooklyn Bridge ruffled bowl - marigold - scarce**
- ___ 230. Concave Diamond tumbler - celest blue
- ___ **231. Grape & Cable turned up centerpiece bowl - white - scarce & highly desirable, nice**
- ___ 232. Flute toothpick - purple - nice
- ___ 233. Flute toothpick - amethyst - pretty
- ___ **234. Waterlily ftd ruffled sauces (2) - lime green opal - both super, both pretty, both rare! choice**
- ___ 235. M'burg Rays & Ribbons ruffled bowl - amethyst - chip on edge
- ___ 235a. Horse Medallion ftd rose bowl - blue - nice
- ___ **236. Grape & Cable cvd compotes (2) - purple - scarce, choice**
- ___ 237. Fan gravy boat - peach opal - pretty
- ___ 238. Grape & Cable hatpin holder - purple - nice
- ___ 239. Rose Show ruffled bowl - aqua opal - butterscotch, pretty, base has been polished, minor spots on roses
- ___ 240. Louisa rose bowl - amethyst
- ___ 241. Nippon PCE bowl w/ribbed back - ice blue - nice
- ___ 242. Grape & Cable spooner - green - minor hit on base
- 500 **243. Grape & Cable pin tray - white - scarce & pretty**
- ___ 244. Fenton's Three Fruits 12 sided plate - green - nice
- ___ 245. Fenton's Three Fruits 12 sided plate - blue
- ___ **246. Holly ruffled hatshape - amethyst opal - very scarce color & nice**
- ___ 247. Fanciful ruffled bowl - peach opal - nice
- 500 **248. Peacocks ruffled bowl w/ribbed back - aqua opal - scarce & highly desirable**
- ___ 249. Grape & Cable 5 pc. berry set - marigold
- ___ 250. Holly 9" plate - marigold - pretty
- ___ 251. Leaded Glass lamp made of Carnival Glass pieces
- 425 **252. Rose Pinwheel ruffled bowl - marigold - fantastic irid., beautiful**
- ___ 253. Shell & Sand 9" plate - aqua - silvery
- ___ 254. M'burg Peacock at Urn Mystery bowl - amethyst - satin
- ___ 255. Wines including: Golden Harvest (3) - amethyst; Golden Harvest (2) - marigold; Imperial Grape (4) - smoke; Imperial Grape - marigold - choice
- 850 **256. Grape & Cable Variant ruffled bowl w/ribbed back - sapphire - has great irid., a beauty, super rare**
- ___ 257. Grape Delight ftd rose bowl - marigold
- ___ **258. Tornado small size vase - purple - scarce**
- ___ **259. Tornado small size vase - marigold - scarce**
- ___ 260. Good Luck PCE bowl w/ribbed back - marigold - very pretty w/soft pink irid.
- ___ 261. Orange Tree wine glass & Tulip and Cane claret - both marigold - choice
- ___ 262. Acanthus deep round bowl - purple - super pretty
- 700 **263. Colonial Lady vase - purple - has super pretty highlights, rare & desirable**
- ___ 264. Octagon small size water pitcher - marigold
- ___ 265. Diamond Cut Shield 5 pc. water set - marigold
- ___ 266. Open Rose 9" plate - amber - very pretty
- 800 **267. Blackberry Spray ruffled hatshape - reverse amberina opal - very rare & pretty**
- ___ 268. Grape & Cable Variant 9" plate w/plain - amethyst - chip on base
- 700 269. Lucile 7 pc. water set - blue - very scarce & desirable set
- ___ **270. Morning Glory 15" funeral vase - marigold - dark & pretty**
- ___ 271. Dragon & Lotus IC shaped bowl - amber - scarce color & pretty
- ___ 272. Dragon & Lotus IC shaped bowl - blue
- ___ 273. M'burg Peacock at Urn large ruffled bowl - amethyst - satin, scarce
- ___ 274. M'burg Trout & Fly ruffled bowl - amethyst - satin, silvery
- ___ **275. Kittens 2 sided up dish - blue - nice**
- ___ 276. Kittens toothpick - blue
- ___ 277. Kittens toothpick - marigold
- 800 **278. Embroidered Mums 9" plate w/ribbed back - ice green - super pretty example, rare & desirable**
- ___ 279. Marigold mugs including: Robin; Stork & Rushes; Vintage Banded; Colonial - choice
- ___ 280. Three Fruits 9" plate w/BW back - marigold
- ___ 281. Daisy & Crackle car vases (2) - marigold - both have metal holders, choice
- ___ 282. Round Up 9" plate - amethyst - scarce & nice
- ___ **283. Strawberry bon bon - lime green opal - has nice as these get**
- ___ 284. Lattice & Daisy tumbler - powder blue slag - pretty, scarce
- ___ **285. Wishbone PCE bowl w/BW back - white - super pretty, extremely rare, minor nick on base**
- ___ 286. Squatty vases including: Feathers - marigold; Boggy Bayou (2) - marigold; Rustic - marigold; N's Thin Rib - marigold & amethyst; N's Fine Rib - green & marigold - choice
- ___ 287. Heart & Vine 9" plate - blue - scarce
- ___ 288. Peacock at the Fountain sauces (5), Grape & Cable sauces (2) - all purple - choice
- ___ **289. Cosmos & Cane whimsey small banana boat dish - honey amber - neat whimsical piece**
- ___ 290. Wine bottles (3) - marigold - choice
- ___ 291. Gothic Arches 11" vase - marigold - has 8" mouth, super pretty
- ___ 292. Peacock at the Fountain spooner - marigold

- ___ 293. Tumblers including: Grand Thistles (3) - blue; Western Thistles (3) - marigold; Tiger Lily (5) - marigold; Field Flower - marigold; Imperial Grape - marigold; Windmill - marigold; Field Thistles (3) - marigold - choice
- 550 294. M'burg Courthouse ruffled bowl - amethyst - radium w/super irid.
- ___ 295. Carolina Dogwood ruffled bowl - blue opal - scarce
- ___ 296. Persian Garden 6" plate - peach opal - a great example, scarce
- ___ 297. Grapevine Lattice 7 pc. tankard water set - marigold - very scarce, heat check in handle
- ___ 298. Grape & Cable 11" ruffled bowl w/BW back - purple - nick on one point
- ___ 299. Collection of hatshapes and sauces - choice
- ___ 300. Raspberry 3 pc water set - purple - pitcher has usual mold roughness on base
- ___ 301. Corn vase w/stalk base - ice green - scarce
- ___ 302. Hobstar & Fruit two sides up dish - peach opal - scarce, nice
- 800 303. Grape & Cable mid-size punch bowl & base - marigold - super pretty, very rare
- ___ 304. Misc. Pieces - choice
- ___ 305. M'burg Nesting Swan ruffled bowl - amethyst - radium, scarce
- ___ 306. Wild Rose Open Edge bowl - green
- ___ 307. Misc. Marigold vases - choice
- ___ 308. Poppy Show ruffled bowl - white - scarce & nice
- ___ 309. Feathers 7" vase - white - super pretty & rare
- ___ 310. Basketweave Open Edge JIP hatshape - light green w/red - odd color
- ___ 311. Basketweave Open Edge JIP hats (2) - marigold - choice
- ___ 312. Punch cups including: Many Fruits (8) - purple; Fashion (3) - marigold; Stippled Grape & Cable (2) - marigold - choice
- ___ 313. Apple Blossom Twigs 9" plate - blue - scarce, nice
- ___ 314. French Knots square hatshape - white - pretty & scarce
- ___ 315. Vintage 7" plate - green - nice
- ___ 316. Carnival Hatpins including: Roosters - white, blue, amber, lavender; Big Butterflies (2), Basketflower; Butterflies; Six Plums; Tufted Throw Pillow; Faceted - choice
- ___ 317. Stag & Holly giant rose bowl - marigold
- ___ 318. Grape & Cable master punch bowl base - blue - extremely rare, nick on one grape, if you need it, here is your chance
- ___ 319. Non-iridized hatpins, many in Carnival patterns (32) - choice
- ___ 320. Horse Medallion 7" plate - marigold - pretty
- ___ 321. Fishnet epergne - peach opal - scarce
- ___ 322. Brocaded Acorns hdd bowl - ice blue; Brocaded Acorns hdd plate - lavender; Brocaded Palms hdd plate - ice green - choice
- 800 323. Norris N Smith adv. 6" plate - amethyst - extremely rare plate, nice
- ___ 324. Stork ABC plate - marigold
- ___ 325. Scroll Embossed lg ruffled compote - purple - super
- ___ 326. Fenton's Fine Rib 12" vase - amber - scarce color
- ___ 327. Pulled Loop 13" & 10" vases - peach opal - choice
- 2200 328. Nuart Homestead chop plate - amber - fantastic! A beautiful plate!
- ___ 329. Nuart Homestead chop plate - marigold - also super nice
- ___ 330. Misc. Carnival Glass vases (10) - choice
- ___ 331. Fanciful IC shaped bowl - white - pretty
- ___ 332. Grape & Cable shot glass - marigold - nice
- ___ 333. Blackberry Spray ruffled hat - red - scarce
- ___ 334. Octagon 4 1/2" sauce - purple - pretty
- 2500 335. Coral 9" plate - marigold - spectacular, may be the best one I've ever seen, rare
- ___ 336. Misc. Carnival Glass pcs. (17) - choice
- ___ 337. Misc. Carnival glass pcs., all damaged (7) - choice
- ___ 338. Misc. Carnival Glass pcs. (12) - choice
- ___ 339. Misc. Carnival Glass pcs. (7) - choice
- ___ 340. Misc. Carnival Glass Candlesticks & Vases (10) - choice
- ___ 341. Misc. Carnival Glass pcs. (15) - choice
- ___ 342. Misc. Carnival Glass pcs. (8) - choice

Jim and Jan Seeck **Seeck Auctions** 641-424-1116



32

Seeck Auctions

P.O. Box 377
Mason City, Iowa 50402

PRESORTED
FIRST-CLASS MAIL
U.S. POSTAGE PAID
MINNEAPOLIS, MN
PERMIT NO. 28534

*****AUTO**MIXED AADC 553

Lee Markley
PO Box 306
Mentone, IN 46539-0306



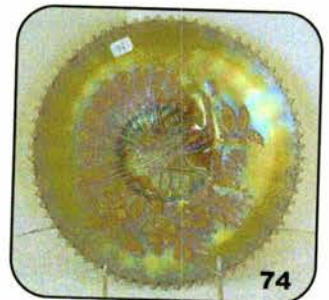
62



66



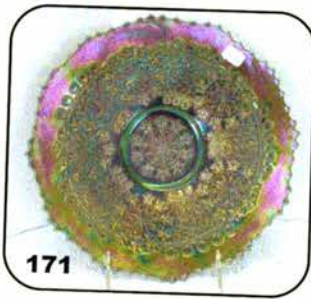
99



74



27



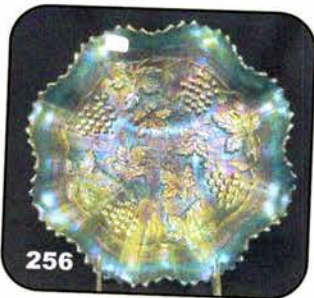
171



215



323



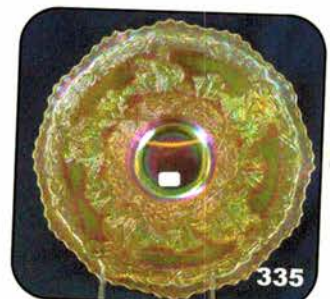
256



278



252



335