



*Heart of America Carnival Glass Association Auction*  
*Kansas City, Missouri*  
*Saturday, April 29, 2006 at 9:30 a.m.*

*Featuring the Carnival Glass Collection of*  
*Pete and Paula Bingham, Riesel, TX*

*Jim Wroda Auction Services*  
*Greenville, Ohio*

*Mt. Rainier, Washington*  
*Vol 3, Series 2006*



Directions to the auction location at Embassy Suites,  
Kansas City Airport are listed below:

**COMING FROM THE SOUTH – U.S. HIGHWAY 71:**  
EXIT (to the right) to I-435 North (Kansas City/Des Moines) –  
continue on I-435 North (exit to the right) for approximately 20  
Miles, to EXIT 49A (Highway 152 West). Continue West for  
approximately 9 miles, EXIT to I-29, (Highway 71/ St. Joseph).  
Go North (about 1 mile) to EXIT 10 (Tiffany Springs  
Parkway). The Embassy Suites will be on your right.

**COMING FROM THE EAST – I-70:**  
EXIT from I-70 at EXIT 8B (Des Moines) to I-435 North – continue  
on I-435 North for approximately 10 miles, to EXIT 49A  
(Highway 152 West). Continue West for approximately 9 miles,  
exit to I-29, Highway 71, St Joseph. Go North (about 1 mile) to  
EXIT 10 (Tiffany Springs Parkway). The Embassy Suites will be  
on your right.

**COMING FROM THE NORTH – I-35:**  
EXIT from I-35 at EXIT 16 (Liberty – Highway 152), turn right  
(West), continue on Highway 152 for approximately 11 miles,  
EXIT to I-29, Highway 71, St. Joseph. Go North (about 1 mile) to  
EXIT 10 (Tiffany Springs Parkway). The Embassy Suites will be  
on your right.

**COMING FROM THE WEST – I-70:**  
EXIT from I-70 at EXIT 411B to I-435 North, continue north on  
I-435 to EXIT 24 (Highway 152 & N.W. Barry Road), turn right,  
go about 4 miles to EXIT I-29 North (St Joseph), go north on I-29  
(about 1 mile) to EXIT 10 (Tiffany Springs Parkway). The  
Embassy Suites will be on your right.

EMBASSY SUITES, KANSAS CITY AIRPORT  
7640 N.W. TIFFANY SPRINGS PARKWAY  
KANSAS CITY, MO 64135  
TELEPHONE 816-891-7788



# HOACGA Carnival Glass Convention Auction

(This is a public auction. You do not need to be a member of HOACGA to participate in the auction.)

**Saturday, April 29, 2006 at 9:30 a.m.**

Preview Friday, April 28<sup>th</sup>, 2006 from 6:00–9:00 p.m. and Saturday from 8:00 a.m. until auction time

**Embassy Suites, Kansas City Airport**

**7640 N.W. Tiffany Springs Parkway Kansas City, MO 64153**

**816-891-7788**

If you ever wanted to attend a Carnival Glass EVENT then you need to be at the 2006 HOACGA convention. We are auctioning the awesome collection of Pete and Paula Bingham, Riesel Texas. There isn't enough time to say all that should be said about this incredible collection so we will let the glass talk for itself. Please read the listing and then have a cup of your favorite beverage, and then read the listing again so you can comprehend everything that is going to be sold here. This is truly a Carnival Glass event to remember. Several big moments in Carnival Glass history will happen April 29<sup>th</sup> 2006 and will be talked about for years to come. Please come over and be a part of it all. You will not be disappointed! WE PROMISE!

There is one item in this auction being sold with reserve. THE RESERVE IS PUBLISHED and this is the ONLY reserve in the auction. Everything else sells to the highest bidder no matter the price GUARANTEED! ALL items will have a new home. Be prepared to bid your price and bid with confidence.

If you cannot make it, but see some glass in the brochure you would like a chance at... Give Laurie a call and she will help you out! You can also visit our website at [www.jimwrodaauction.com](http://www.jimwrodaauction.com). THANKS!!! Jim

\*\*\*\*\***Mail, E-mail, Phone, and Absentee Bids Policy:**\*\*\*\*\*

1. Phone inquiries on items of interest are welcome! 937-548-2640 or 937-447-8909 evening.
2. Bidders take full responsibility to honor any and all bids that are executed in your behalf.
3. All items to be paid for within 7 days of notification unless other arrangements are made prior to auction. Successful absentee bidders must also pay estimated shipping costs. **NOTE:** There will be a \$5.00 fee added, per item, to the price of all successful absentee bids plus estimated postage and insurance.
4. All items bid competitively against the audience. **We do not start with your bid.**
5. Items will be bid on in **perfect condition** with average to above average iridescence unless otherwise stated or noted on your order of sale list or absentee bid sheet. **We will describe each item as accurately as possible!! (see listing) Bids will not be carried out if a damage is found during auction.** If manufacture problems bother you such as air bubbles, pulled points, soda ash, tool marks, or any other manufacturing flaw, please be specific in your mail bids or email bids. *If there is a manufacture flaw on an item that we feel is truly distracting, we have noted that in the listing already. Auction Company has the right NOT to execute an absentee bid for any reason.*
6. All bids can be called in to: (937) 548-2640, faxed to 937-548-3492, or sent to 5239 St. Rt. 49 South, Greenville, OH 45331. You can also e-mail bids directly from our website and ask questions (Please Ask!)
7. **All mail, faxed, write-in, and email bids due by Wednesday, April 26, 2006 – 3:00 p.m. (due to traveling!)**
8. **Anyone wishing to live phone bid, requests due by Monday, April 24, 2006 – 5:00 p.m.**
9. If someone in the audience is bidding for you they must pay for the item(s) before leaving.

**NOTICE:** Laurie will get your items to you as fast as she can but, PLEASE allow 2 to 3 weeks for your items to arrive after we receive your payment. Thanks!

\*\*\*\**To view more pictures on the web: [www.jimwrodaauction.com](http://www.jimwrodaauction.com)*\*\*\*\*

**Terms and Conditions of Auction:** Cash, Travelers checks, business or personal checks with proper I.D. We now have Visa and MC and Discover with a 3% clerk fee. All items being sold **AS IS WHERE IS**

\*\*\*\**Please use the preview times WISELY! Look over your items of interest.*\*\*\*\*



*Jim Wroda Auction Services*

**Jim Wroda and Mike Baker CAI – Auctioneers**

5239 St. Rt. 49 South, Greenville, OH 45331

Daytime: 937-548-2640

Evening 937-447-8909

Email: [laurie@jimwrodaauction.com](mailto:laurie@jimwrodaauction.com)

Laurie's mobile ( if needed after Weds.) 937-459-9562



## Lot A



### Millersburg Blue People's Vase selling at Public Auction in April 2006

The rarest piece of Carnival Glass that the Millersburg Art Glass Company ever produced, the blue People's vase, holds stories that will be told through the ages. When the vase showed its face it wasn't even verified at that time it was even Millersburg Glass.

#### The Blue Peoples vase shows its face for the first time

It was 1963 at an antique show that the People's vase showed up. It was sitting on a table in Max Penney's booth for a whopping price of \$175. The Carnival Glass community was shocked to see such a high price on this massive piece of glass. No takers day 1. The next day, Max Penny, the dealer from Tulsa who owned the vase, drastically reduced his price to \$75, still no takers. Then along came Mrs. Emma Schrader, a retired school teacher from Hutchinson, KS, who finally purchased the vase. Some say she bought it for the bargain price of \$50. Emma's husband then built a glass case where the blue People's vase resided for the next four years. John Woody, one of the people who couldn't believe the \$175 price tag, couldn't stop thinking about the vase and visited the Schrader's home several times. Woody finally asked Mrs. Schrader to put the People's vase in a Carnival Glass auction scheduled for September 1967. There was to be no commission charged. The agreement, they would split the amount realized.

#### A Twist before the Auction

Approximately two weeks before the Kansas auction in 1967, Mrs. Charlotte Allenbaugh, Dover, OH, dealer, sold a similar vase in marigold to Richard Loechinger, of Dayton, OH for \$650. Until that time, efforts to establish the maker of the vase had been fruitless. Woody thought it might be a Fenton piece. Rose Presznick of Lodi, OH, who borrowed the marigold vase to draw (and kept it a year without doing so), thought it was of foreign origin. A third expert of that time was Emporia's Marion Hartung, who had never seen the Schrader vase. Although Hutchinson was only 125 miles away Mrs. Hartung was never able to voice an opinion.

Two weeks before the Kansas auction, editor O. Joe Olson of Carnival Glass News & Views, had copies made of a large drawing of the seven figures embossed on the outside of the vase. A copy was sent to President Frank M. Fenton of the Fenton Glass Company, Williamstown, WV. Frank responded that Fenton could not claim the vase. He wrote: "I have never seen this design nor have I seen any indication that we made anything like it here". This left Northwood, Imperial and, possibly, Millersburg. It looked like a long-range project, but then the pieces began to fall into place. The first major break came about Sept. 29, 1967 when the writer was privileged to examine the blue and marigold vases side-by-side in the Thrawley home. The vases were found to be identical in pattern, dimensions and weight. There could be no mistake. They came from the same mold and the same manufacturer. Each was 11 1/2" high and 4 1/2" in diameter. Each weighed 5 pounds. They were cylindrical in form, six of the seven highly embossed figures on the outside held hands in a dance and an elderly man leaning on a staff and appears to be watching the dancing.

Two days later at the home of Mrs. Allenbaugh in Dover, Oh., 35 miles east of Millersburg Ohio, important facts were learned. Mrs. Allenbaugh said she bought the marigold vase at an auction in Wilmot Ohio, a small town 20 miles northeast of Millersburg, in August 1965. "I had a lot of competition for the marigold vase she said. The price was between \$40 and \$50. The vase had belonged to Mrs. Nellie Robinette who was moving to a retirement home. By means of interviewing senior citizens in Millersburg, and also through the facilities of the library and newspaper there, it was learned that Mrs. Robinette's brother had been Dr. William F. Lohaas, a dentist in Millersburg for many years. He had been a stockholder in the Millersburg Glass company and friends recalled he had received the vase and other glass when the assets of the bankrupt Millersburg company were distributed in 1914. Dr. Lohaas had died on Feb. 2, 1937, at the age of 65, and his sister, Miss Nellie Lohaas, inherited the glass. She married John Robinette and resided in Wilmot Ohio.

### The History is confirmed

These facts were verified in talks with Judge W. Wayne Badger, an expert on local history, with Horace Maxwell, a long-time friend of the Lohaas family, owner of a men's clothing store, and with Mrs. Scott Mast, a remarkable citizen with nearly total recall at the age of 92.

It became clear that the People's vase was a product of the Millersburg glass company .

On the last day of the annual Millersburg fall festival, Oct. 7, 1967, the writer visited a family at nearby Rittman, Oh, to examine their fine People's vase in amethyst. Again, it was identical to the blue and marigold except the top was ruffled slightly giving the vase a more finished appearance.

The owners said the vase came in a 150-piece collection purchased sometime in 1959 from a Millersburg dealer who had secured nearly all of the glass from that area.

### Big Blue sells to the highest bidder in 1967

The September 1967 auction rolled around and the collectors couldn't wait to get to the auction. When the vase came up for bids, the bidding ensued, and Charles S. Thrawley of Spiceland, IN, was the high bidder at \$1,350. When news of the price paid reached Millersburg, OH, one of the town fathers remarked, "This must have been a case of one fool meeting another!" The Thrawley was well on his way of building what became the number one collection of Carnival Glass rarities. The Thrawleys were very proud keepers of the vase.

The Thrawleys, in 1968, showed the vase and 44 other rarities. The items were arranged on four large turntables, each rotating slowly at a different speed, with background music of an old carnival tune played on a steam calliope! With this the Thrawleys – Charles, Pearl and son Carroll – took blue ribbons at the conventions and tri-state show at Youngstown, O.,

Woody bought the Thrawley collection and sold 196 pieces, including the blue People's vase, at auction near St. Louis, Aug. 16, 1969.

Alice Ferrish of Sunny Vale, Calif., a newcomer to Carnival, sent shock waves through the rarity-bent carnival glass specialists when she bid and won the blue vase for \$2,700 in 1969.

Woody never forgot the blue vase. Alice Ferrish has an unlisted telephone number, but that didn't stop Woody from finding her. He made a call to his friend Don Moore, of San Francisco and got her phone number. Woody then bought the vase from Alice for somewhere around \$4,400 and brought it back to Kansas for its next showcase appearance. The auction was going to be July 14, 1973 in Des Moines. The now known Millersburg blue Peoples vase would sell again. Some people speculated that Woody would not get his money back. Some thought the vase might bring as much as \$5,000. Others said, "No way, it is now in the new Hartung price guide at \$600". Though some thought it was a printer error and should have read \$6,000. That morning, on July 14<sup>th</sup>, 1973, the vase went up for bids and quickly opened at \$2,000 rising to \$6,000 with no problem. Jim Mogg of Hamilton, NJ, and Herb Canon of Des Moines, went back and forth with \$100 bid increments until Canon bid \$8,000! Mogg, who said before the auction, "I came to buy the vase" bid one more time at \$8,100 and John Woody said, "Sold!"

The blue People's vase didn't show its face again until January 16, 1982 in St. Louis, MO. It once again showed up at John Woody's Carnival auction with much anticipation because word was out that the green People's vase had sold for \$5,000. Floyd and Cecil Whitley, who had purchased the green People's vase, wanted to "protect their investment" so they asked Don Staley to attend the auction and try to purchase the blue People's vase. Don did this and the vase was bought for \$5,100. This would be the last time the blue People's vase would see the auction block, and it proudly stayed in the Whitley collection for 20+ years. In 2001 it traded hands privately between Floyd and Cecil Whitley to Pete and Paula Bingham for the handsome price of \$75,000.

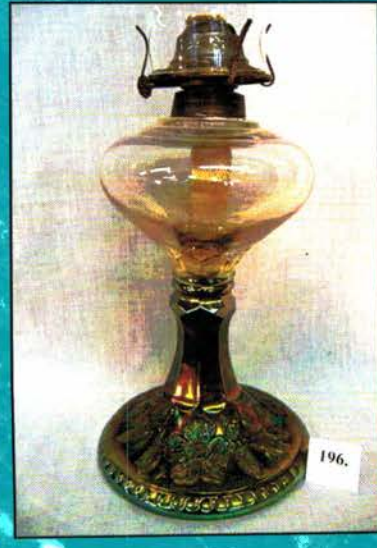
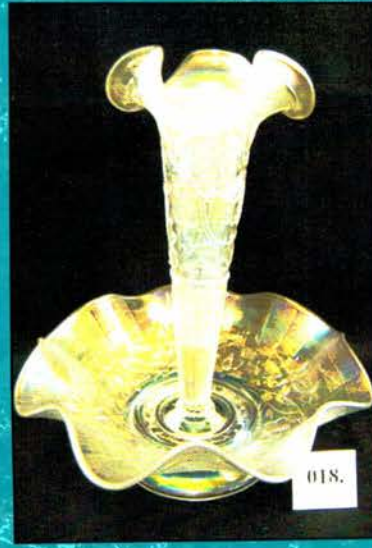
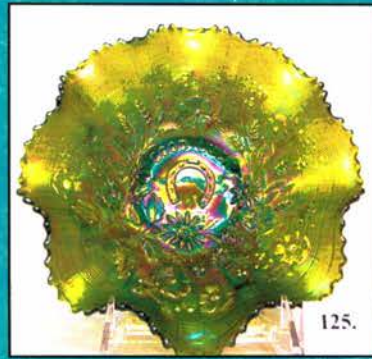
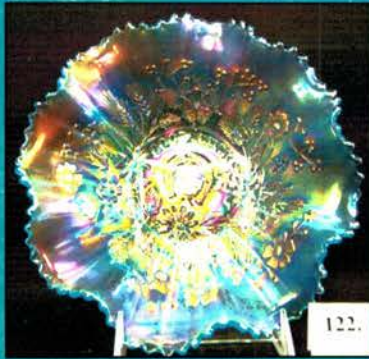
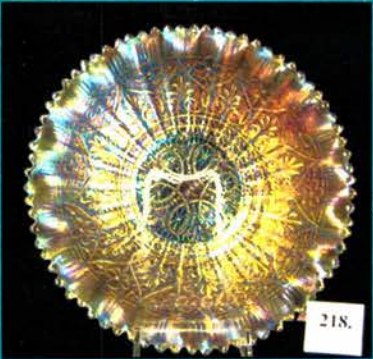
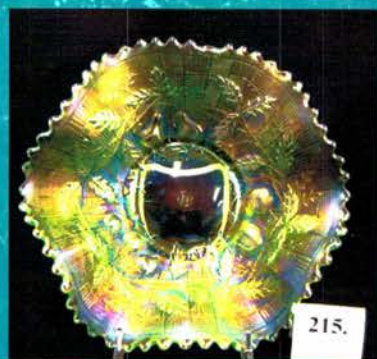
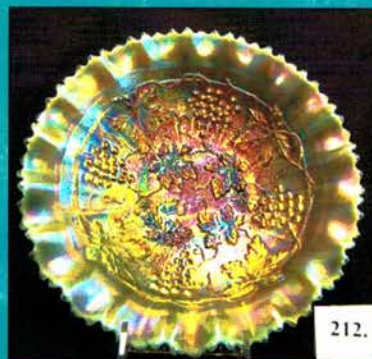
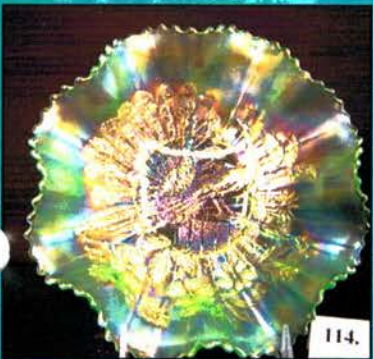
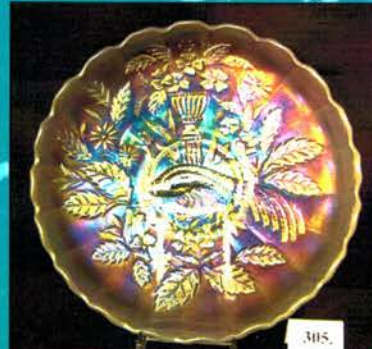
### The next journey in its life. Who will be the caretaker of "Big Blue"?

Now in April, 2006, after spending nearly a quarter century in Texas, one of the most storied and historical pieces of carnival glass, the blue People's Vase, will be sold once again at public auction by Jim Wroda Auction Services of Greenville Ohio. The Pete and Paula Bingham Carnival glass collection will be sold at the Heart of America Carnival Glass Convention in Kansas City, MO.

It is well accepted in the Carnival Glass world that "Big Blue" may be the most important piece of Millersburg glass ever made. The People's vases are now the signature of Millersburg Carnival Glass and of a glass company that only lasted three short years. John Fenton had a vision and apparently that vision was to be different than the other glass companies. You have to give him credit for that! How would he know that someday Millersburg Carnival Glass would be one of the hottest and most desirable glasses selling right now with several pieces selling in the five-figure range over the last few years. Will "Big Blue" ever find a home in Millersburg, Ohio again? Only time will tell.....

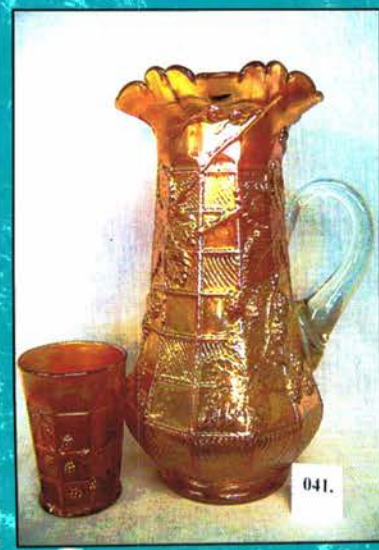
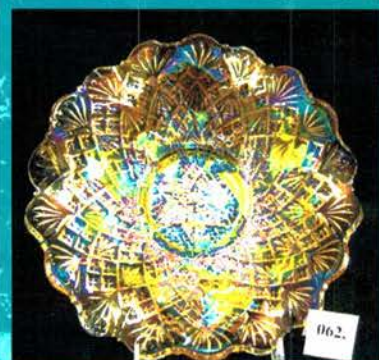
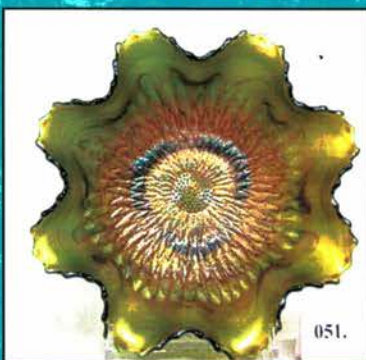
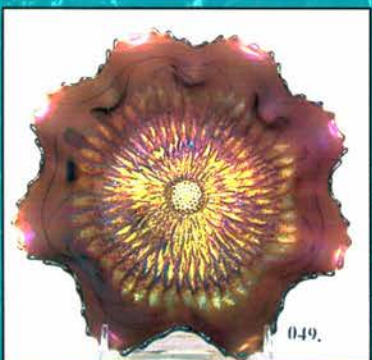
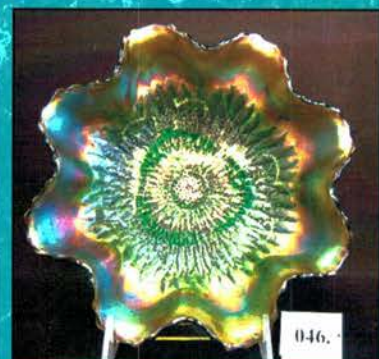
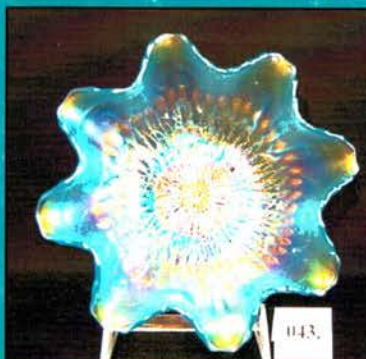
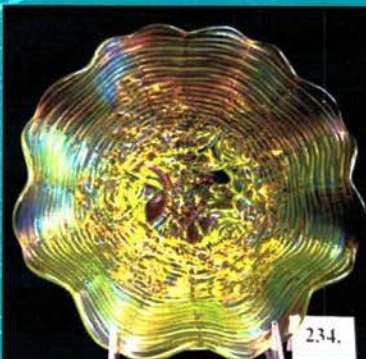
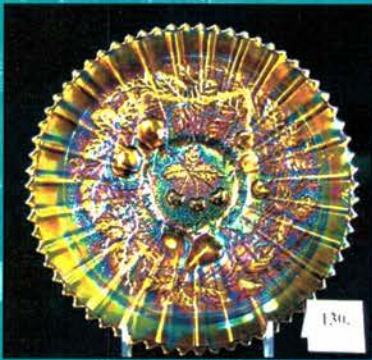
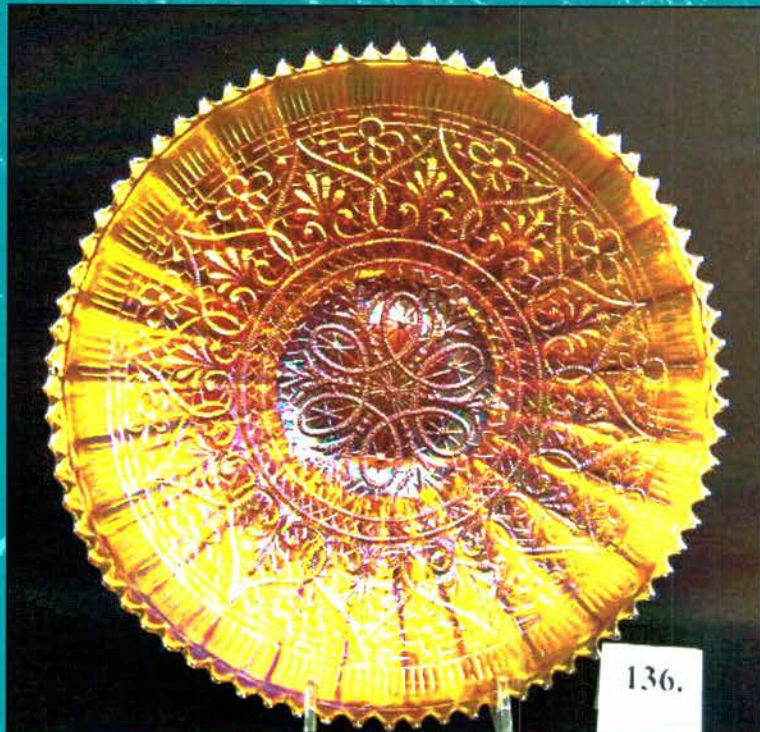
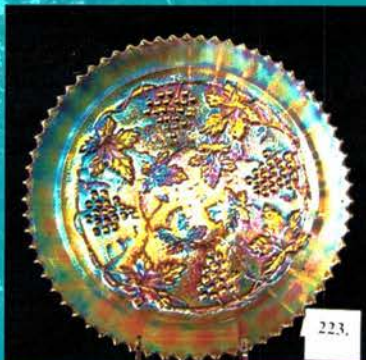
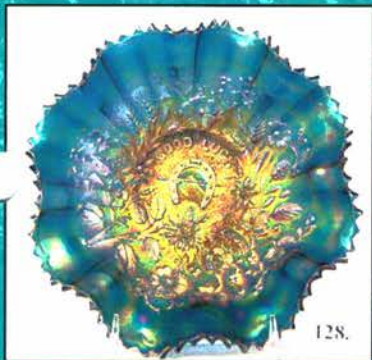
Footnote: The vases were originally inventoried during the bankruptcy as "Holland" vases.

- 100,000 A. M-BURG BLUE PEOPLE'S VASE. MAYBE THE RAREST PIECE OF CARNIVAL GLASS TO EVER SELL AT PUBLIC AUCTION. WHAT AN INCREDIBLE PIECE OF MILLERSBURG GLASS. ONE COULD ARGUE THE ABSOLUTE KING PIN OF MILLERSBURG GLASS EVER! THIS IS A TRUE HISTORIC EVENT! BE PART OF IT!
- Note: This item is being sold with reserve.  
Estimate value \$60,000 to \$95,000.00*
- 65 1. Fenton blue Wreath of Roses cup & saucer. Saucer is 6" Pinecone plate.
- 45 2. Fenton mari. Wreath of Roses cup & saucer. Saucer is 6" Pinecone plate.
- 20 3. Imperial green Grape cup & saucer.
- 55 4. Imperial mari. Grape cup & saucer.
- 65 5. N-wood green G & C cup & saucer.
- 85 6. N-wood mari. G & C cup & saucer.
- 600 7. N-wood IB G & C cup & saucer.
- 425 8. N-wood IG G & C cup & Saucer.
- 375 9. N-wood white G & C cup & saucer.
- 260 10. N-wood purple G & C cup & saucer.
- 245 11. N-wood celeste blue stretch cup & saucer.
- 30,000 12. N-WOOD 8 1/2" AO STIPPLED STRAWBERRY BOWL. SPECIAL BOWL FROM THE LOESCHER COLLECTION. EXTREMELY RARE PIECE OF GLASS THAT HAS SUPER COLOR! THIS JUST MAY BE A ONCE IN A LIFETIME CHANCE!
- 900 13. N-wood 8 1/2" horehound Stippled Strawberry bowl. B/W back. RARE COLOR
- 575 14. N-wood 8 1/2" horehound Stippled Strawberry PCE bowl, B/W back. Also Rare
- 750 15. N-wood 8 1/2" mari. Stippled Strawberry plate.
- 2000 16. N-wood IB Wishbone epergne. Lily glued into holder. Nice dark color!
- 950 17. N-wood IG Wishbone epergne. Small chip on the base of the lily. no big deal. excellent color!
- 750 18. N-wood white Wishbone epergne. Very scarce
- 650 19. N-wood purple Wishbone pitcher. Hardly ever sold.
- 1,050 20. (6) N-wood purple Wishbone tumblers. 6 x money.
- 8,500 21. N-WOOD FROSTY IB ACORN BURR 8 PC. PUNCH SET. A SUPER RARE SET! A TOP SHELF PIECE!
- 3500 22. N-WOOD EMERALD GREEN ACORN BURR 8 PC. PUNCH SET. HOLY SMOKES!!
- 6500 23. N-WOOD ELECTRIC PURPLE ACORN BURR 8 PC. PUNCH SET. KILLER IRID.
- 550 24. N-wood mari. Acorn Burrs 7 pc. Water set.
- 1450 25. N-wood purple Acorn Burr 7pc. Water set. Nice electric highlights.
- 15,000 26. N-WOOD AQUA OPAL G & C HATPIN HOLDER. EXTREMELY RARE! LOT'S OF OPAL HAS A NO HARM HEAT CHECK IN FOOT.
- 200 27. N-wood green G & C hatpin holder. Scarce
- 375 28. N-wood lavender G & C hatpin holder.
- 200 29. N-wood mari. G & C hatpin holder.
- 8,000 30. N-WOOD 9" ICE GREEN OPAL ROSE SHOW PLATE. VERY RARE AND PRETTY
- 2700 31. N-WOOD 9" ELEC. GREEN ROSE SHOW PLATE. SUPER RICH COLOR AND IRID! RARE
- 600 32. N-wood 9" mari. Rose Show plate. Nice and dark!
- 275 33. N-wood 9" white Rose Show plate. Frosty
- 1500 34. N-wood 8" mari. Rose Show Variant plate.
- 15,000 35. N-WOOD 8 1/2" AO EMBROIDERED MUMS BOWL. ONE OF THE GREAT ONES! THIS BOWL IS NOTHING SHORT OF BEAUTIFUL!
- 775 36. N-WOOD 8 1/2" HOREHOUND EMBROIDERED MUMS BOWL. A SUPER EXAMPLE.
- 750 37. N-WOOD 8 1/2" FROSTY IB EMBROIDERED MUMS BOWL. SUPER COLOR ON A PLAIN BACKED VERSION.
- 2500 38. FENTON GREEN BLACKBERRY BLOCK 7 PC. TANKARD WATER SET. RARE
- 4000 39. FENTON AMY. BLACKBERRY BLOCK 7 PC. TANKARD WATER SET.
- 2600 40. FENTON BLUE BLACKBERRY BLOCK 7 PC. TANKARD WATER SET.
- 725 41. Fenton mari. Blackberry Block 7 pc. Tankard water set. Very Scarce
- 6500 42. DUGAN SUPER ELECTRIC PURPLE CHRISTMAS COMPOTE. Take a look here! WOW
- 900 43. N-WOOD 8" IB SUNFLOWER NUT BOWL. VERY RARE COLOR. NICE PASTEL IRID
- 850 44. N-WOOD 8" RENNINGER BLUE SUNFLOWER NUT BOWL. Very Rare
- 450 45. N-wood 8" blue sunflower nut bowl.
- 300 46. N-WOOD 8" APPLE GREEN SUNFLOWER NUT BOWL. NEVER SEEN ANOTHER!
- 450 47. N-WOOD 8" EMERALD GREEN SUNFLOWER NUT BOWL.
- 375 48. N-wood 8" amy. Sunflower nut bowl.
- 250 49. N-wood 8" lavender Sunflower nut bowl.
- 375 50. N-wood 8" electric mari. Sunflower nut bowl.
- 175 51. N-wood 8" green Sunflower nut bowl.
- 200 52. N-WOOD 8" ELECTRIC GREEN SUNFLOWER BOWL. MAY BE THE HIGHLIGHT OF THIS OUTSTANDING SUNFLOWER COLLECTION!
- 10,500 53. M-BURG 12" AMY. MITERED OVALS VASE. VERY RARE VASE WITH SUPER NICE IRID.
- 2900 54. M-BURG 9" BLUE MYSTERY ICS BOWL. 1 OF JUST 2 OR 3. BEAUTIFUL COLOR
- 4500 55. M-BURG 10" BLUE MANY STARS ICS BOWL. ANOTHER RARITY THAT'S SPECTACULAR.
- 1800 56. M-BURG 10" BLUE BLACKBERRY WREATH ICS BOWL. A PRETTY ONE BOUGHT FROM MARIE MCGEE. STILL HAS STICKER FROM WILSON AUCTION.
- 2000 57. M-BURG GREEN DEEP GRAPE ROUND COMPOTE. VERY RARE
- 2100 58. M-BURG GREEN DEEP GRAPE SQUARE COMPOTE. RARE
- 2200 59. M-BURG MARI. DEEP GRAPE SQUARE COMPOTE. ANOTHER RARITY
- 1900 60. M-BURG PURPLE DEEP GRAPE SQUARE COMPOTE. ALL OF THESE COMPOTES WOULD BE A GREAT ADDITION TO A COLLECTION
- 325 61. M-Burg 10" radium mari. Nesting Swan proof shape bowl. Rare shape!
- 165 62. M-Burg 10" radium mari. Nesting Swan bowl. Tiny pin head on edge.
- 425 63. M-Burg 10" radium purple Nesting Swan bowl.
- 3000 64. M-BURG 5" GREEN BLACKBERRY WREATH LOW RUFFLED 3/1 EDGE SAUCE FLATTENED INTO A PLATE. 1 OF 2 KNOWN.
- 650 65. M-Burg green Seacoast pin tray.

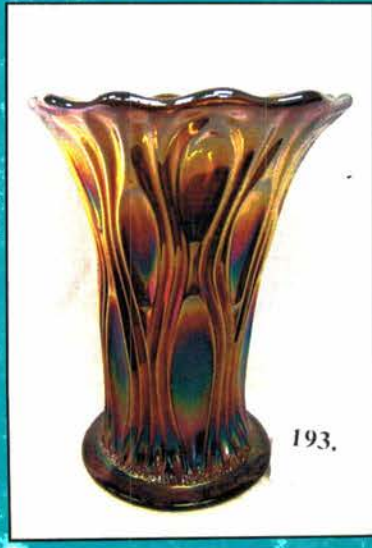
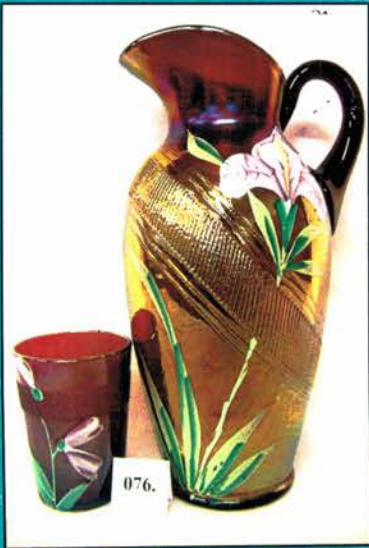
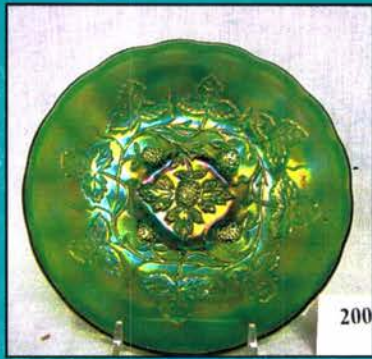
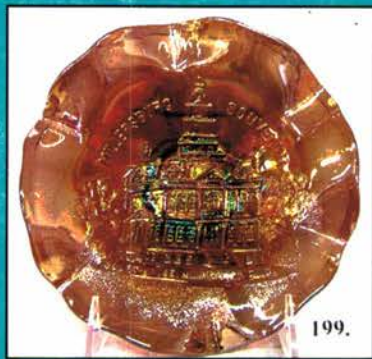
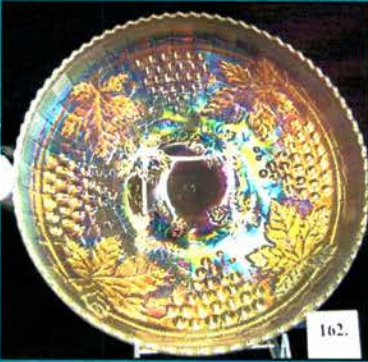


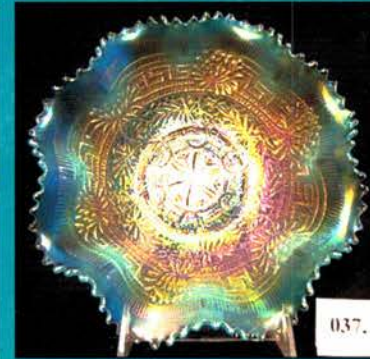
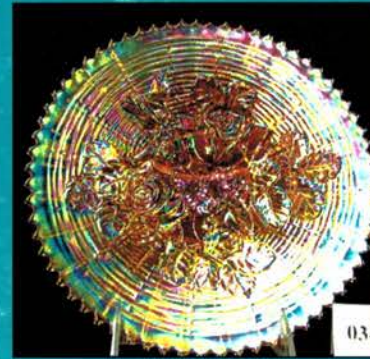
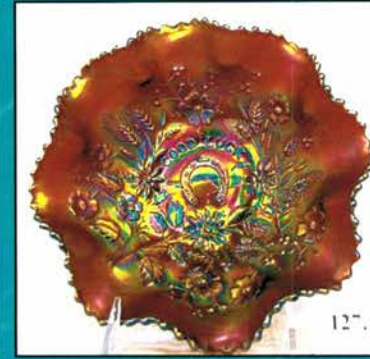
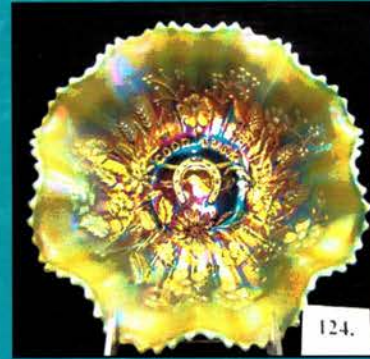
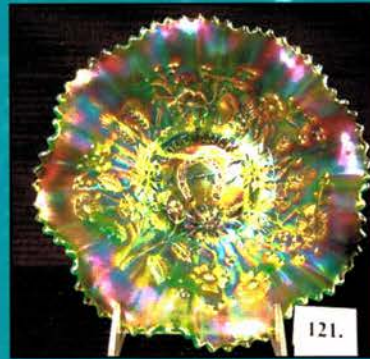
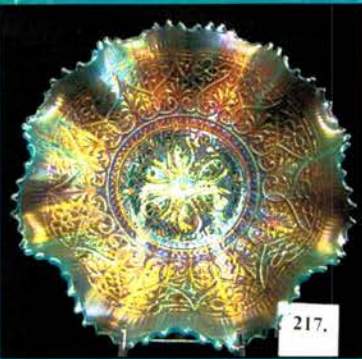
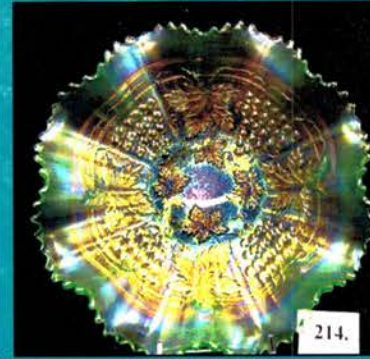
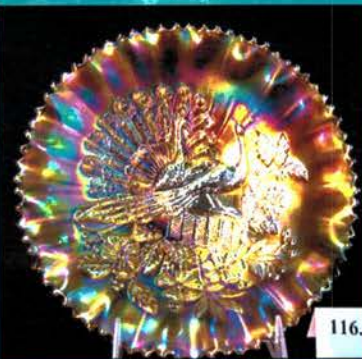
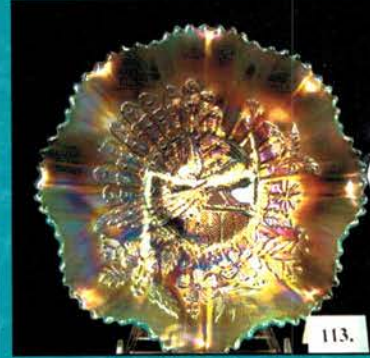
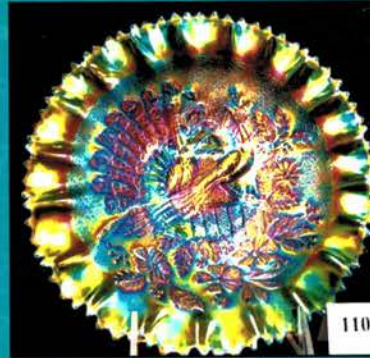
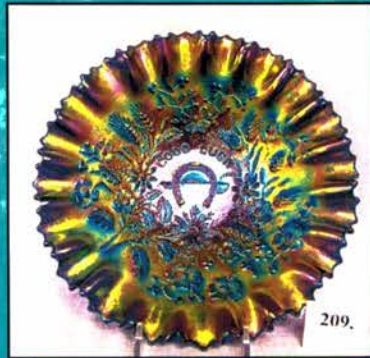
66. M-Burg purple Seacoast pin tray. 625
67. M-Burg mari. Seacoast pin tray. 525
68. M-Burg mari. Sunflower pin tray. 1550
69. M-Burg 8" amy. Trout & Fly ICS bowl. 800
70. M-Burg 8" radium purple Big Fish bowl. 2000
71. M-Burg 8" radium mari. Big Fish bowl. 900
72. FENTON 23" EMERALD GREEN RUSTIC PLUNGER BASED FUNERAL VASE. A FENTON TREASURE! YOU'VE BEEN WAITING FOR THIS ONE... HERE IT IS!!!!!!!!!!!!!! 17,000
73. Fenton 19" amy. Rustic plunger based funeral vase. 2500
74. Fenton 18" blue Rustic plunger based funeral vase. Small chip by top rim on this beautiful vase! 700
75. Fenton 18" mari. Rustic funeral vase. Marigold all the way down! 800
76. Fenton amy. Banded Drapery/Painted Iris 7 pc. Water set. 800
77. Fenton mari. Fentonia 7 pc. Water set. Scarce 350
78. Fenton mari. Kitten's cup & saucer. 145
79. Fenton 4" mari. Kittens round bowl. 85
80. FENTON 9" PUMPKIN MARI. LOTUS & GRAPE PLATE. ONE OF THE RAREST FENTON PLATES. HAS A SMALL CHIP AT THE EDGE BUT THIS PUPPY IS SCREAMIN'!!! 9,500
81. Fenton 9" pumpkin mari. Lotus & Grape bowl. At it's best. EVERYONE IS GONNA WANT THIS ONE! 1400
82. Fenton 9" Purple Concord plate. VERY SCARCE 1700
83. Fenton 9" mari. Peacock Tail plate. SCARCE 900
84. Fenton 9" mari. Persian Medallion plate. 900
85. Fenton 9" mari. Coral plate. ALWAYS A HIT! 1000
86. Fenton 9" mari. Captive Rose plate. 600
87. IMPERIAL 9" PASTEL MARI. SHELL & SAND PLATE. SPECTACULAR IMPERIAL RARITY!!! 2000
88. Imperial 5" smoke Roccoco vase. 260
89. Imperial 4" smoke Rococco compote. 225
90. Imperial 12" sapphire/teal Ripple vase. 250
91. Imperial 12" lavender Free fold vase. 225
92. Imperial 12" elec. Purple Beaded Bulls eye vase. 375
93. Imperial 12" mari. Beaded Bulls eye vase. 200
94. Imperial elec. Purple Luster Rose butter dish 325
95. Imperial smoke Fashion 7 pc. Water set. 1200
96. Imperial elec. Purple Grape 7 pc. Water set. 575
97. Imperial elec. Purple Poinsettia milk pitcher. Has small internal crack by handle but who cares on a rare beauty like this! 500
98. Imperial smoke Poinsettia milk pitcher. 275
99. Imperial. Mari. Poinsettia milk pitcher. 165
100. U.S. GLASS WHITE COSMOS & CANE TANKARD. YOU'LL LOVE THIS ONE! 3500
101. (6) U.S. Glass white Cosmos & Cane tumblers. Choice. 1350
102. U.S. Glass white Cosmos & Cane butter dish 250
103. U.S. Glass white Cosmos & Cane covered sugar 325
104. U.S. Glass white Cosmos & Cane creamer. 425
105. N-WOOD IG G & C MIDSIZE 8 PC. PUNCH SET. EXTREMELY RARE AND HAS WONDERFUL PASTEL IRID! CAN'T GO WRONG HERE! 15,000
106. N-WOOD WHITE G & C MIDSIZE 8 PC. PUNCH SET. ANOTHER BEAUTY AND RARE 4760
107. N-WOOD BLUE G & C MIDSIZE 8 PC. PUNCH SET. WOW!!!!!!!!!!!! 3200
108. N-WOOD GREEN G & C MIDSIZE 8 PC. PUNCH SET. VERY HARD TO FIND 3600
109. N-WOOD ELECT. PURPLE G & C MIDSIZE 8 PC. PUNCH SET. SUPER 2500
110. N-WOOD 8 1/2" AO PEACOCKS STIPPLED PCE BOWL. SMALL CHIP BUT OUTSTANDING PIECE. 1 OF 2 KNOWN! BLASTING BLUE IRID!! 10,500
111. N-wood 8 1/2" AO Peacocks ruffled bowl. SUPER 1300
112. N-wood 8 1/2" AO Peacocks ruffled bowl. SUPER 850
113. N-wood 8 1/2" IB Peacocks bowl. VERY SCARCE 650
114. N-wood 8 1/2" IG Peacocks bowl. WOW! 750
115. N-wood 8 1/2" smoke Peacocks bowl. GOT ONE?? 1150
116. N-WOOD 8 1/2" HOREHOUND PEACOCKS PCE BOWL. VERY RARE AND NICE 1000
117. N-WOOD 9" HOREHOUND PEACOCKS PLATE. ANOTHER SPECTACULAR HOREHOUND PLATE. VERY RARE 950
118. N-wood 9" Pumpkin Mari. Peacocks plate. Super 1000
119. N-wood 6" amy. Jockey Club hand grip plate. 1400
120. N-WOOD 8 1/2" MARI. "JOCKEY CLUB" STYLE GOOD LUCK RUFFLED BOWL. THIS IS THE 1<sup>ST</sup> VERSION OF NORTHWOOD GOOD LUCK "HORSESHOE" (1 OF 2 KNOWN). 4050
121. N-WOOD 8 1/2" IG GOOD LUCK BOWL. NOT QUITE LIME, ABSOLUTELY WONDERFUL RARITY! KILLER PASTEL IRID! 14,500
122. N-WOOD 8 1/2" I.B. GOOD LUCK BOWL. YOU JUST CAN'T FIND THEM LIKE THIS 2900
123. N-WOOD 8 1/2" SAPPHIRE GOOD LUCK BOWL. VERY RARE COLOR AND PRETTY 1800
124. N-WOOD 8 1/2" AO GOOD LUCK RUFFLED BOWL. FABULOUS! 3460
125. N-wood 8 1/2" emerald green Good Luck bowl, B/W back. WHEW! 1050
126. N-wood 8 1/2" horehound Good Luck bowl, B/W back. SCARCE 800
127. N-wood 8 1/2" amy. Good Luck bowl. Plain back. 225
128. N-wood 8 1/2" Renninger blue Good Luck stippled bowl. Edge chip. 350
129. N-wood 8 1/2" Custard w/nutmeg Good Luck ruffled bowl. 800
130. N-WOOD 9" HOREHOUND THREE FRUITS STIPPLED PLATE. THIS THING IS INCREDIBLE!!! MOST PERFECT PIECE OF CARNIVAL YOU WILL EVER FIND! HERE IS WHERE THE TERM "JUST BUY IT" COMES INTO PLAY! NO REGRETS HERE! 11,000
131. N-WOOD 9" AO THREE FRUITS STIPPLED PLATE. WONDERFUL! 8,500
132. N-WOOD 9" POWDER BLUE/AQUA OPAL THREE FRUITS VARIANT PLATE. DEFINITELY NOT AQUA. BEAUTIFUL IRID 3100
133. N-wood 9" radium mari. Three Fruits stippled plate. 550
134. N-wood 9" emerald green Three Fruits plate. 700
135. N-wood 9" mari. Greek Key plate, rib back. 1300
136. N-WOOD 9" MARI. HEARTS & FLOWERS PLATE. FROM WHITLEY AUCTION. SMOKIN' 900
137. N-wood 9" pastel mari. Poppy Show plate. 575
138. FENTON 8 1/2" RED ORANGE TREE ICS BOWL. 1100
139. FENTON 8 1/2" RED HOLLY RUFFLED BOWL. 750
140. FENTON 6" RED PEACOCK TAIL ROUND BOWL. VERY SCARCE 800
141. European 6" red Stretch plate. 75
142. Fenton? 5" red wide panel stretch plate. 55

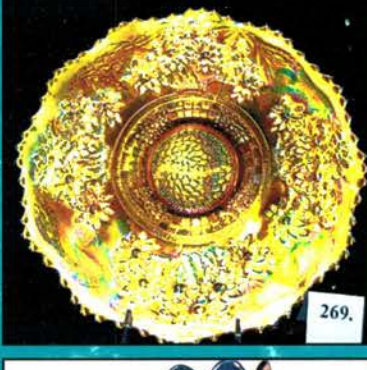
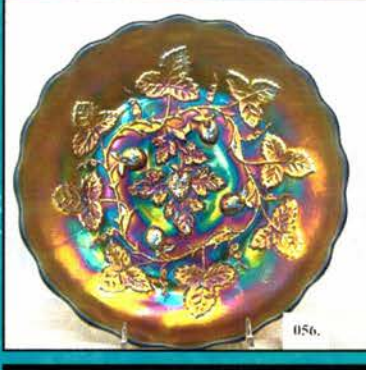
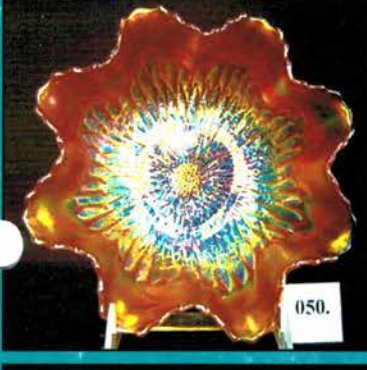
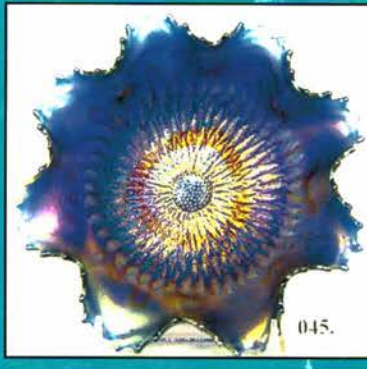
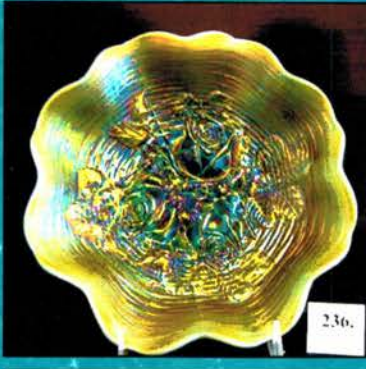
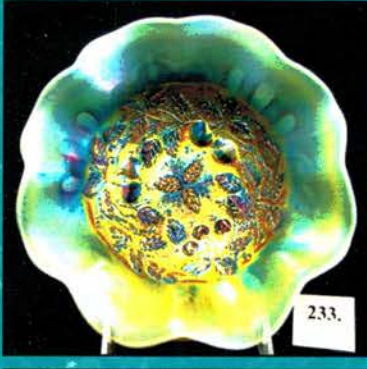
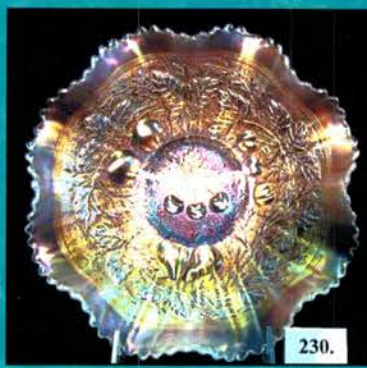
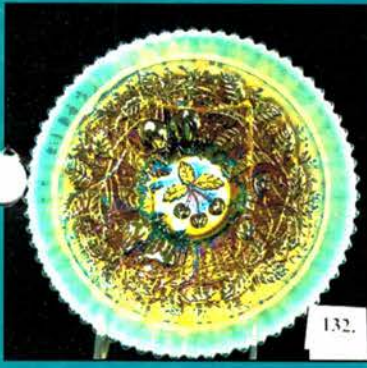


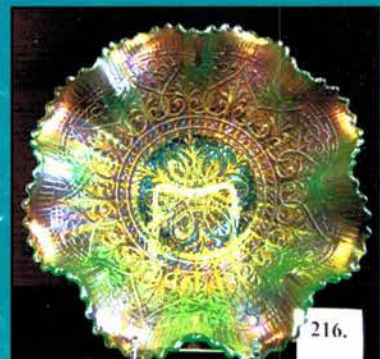
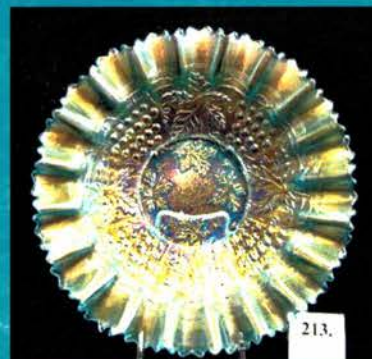
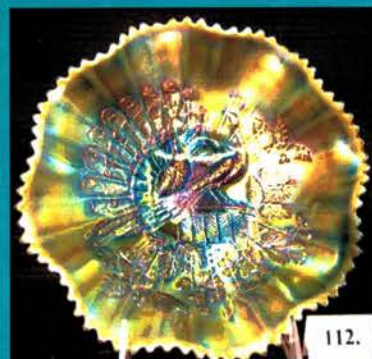
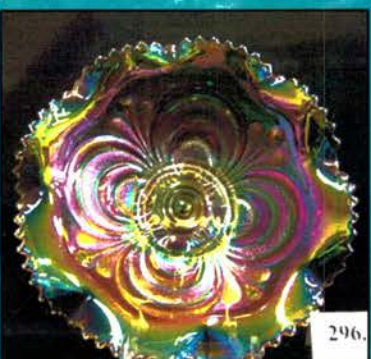
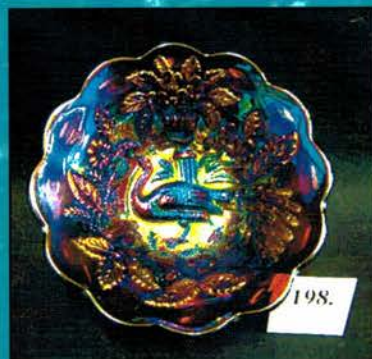
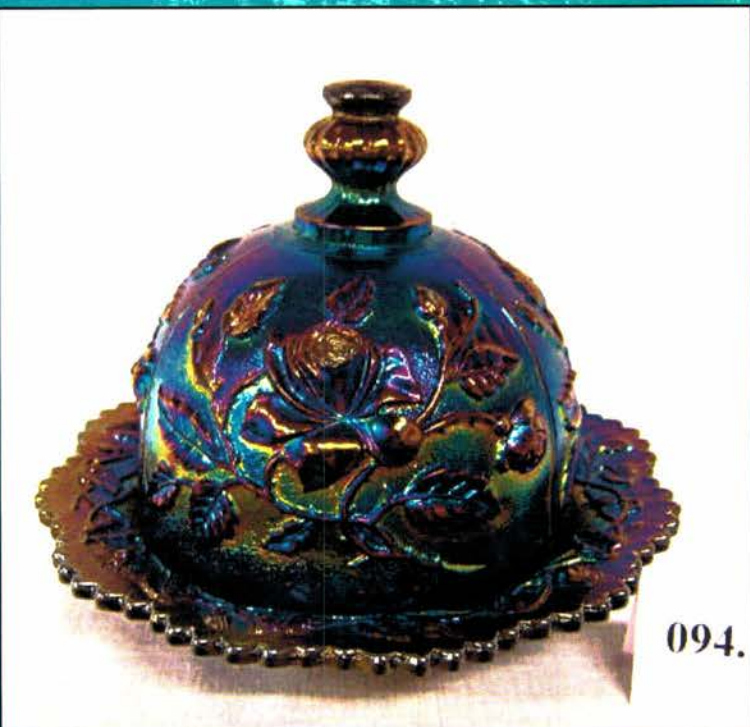


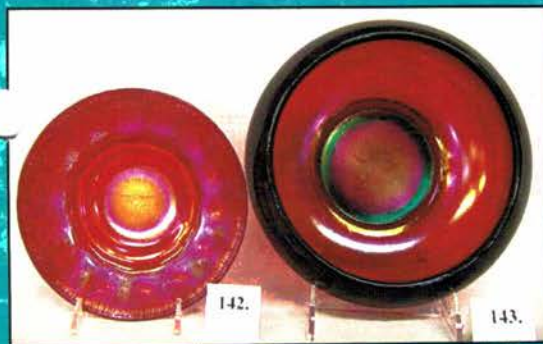
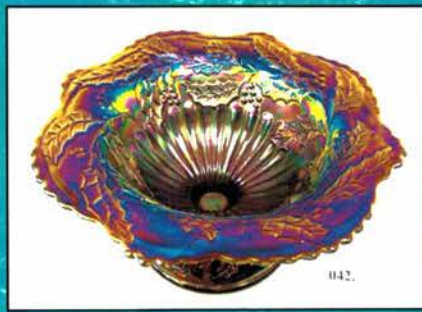
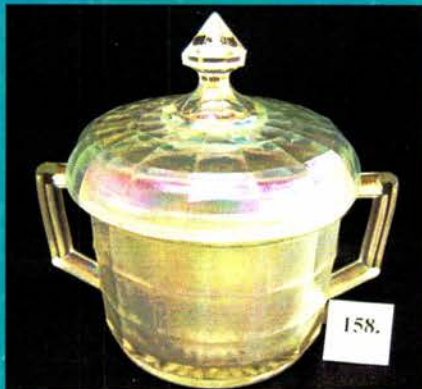
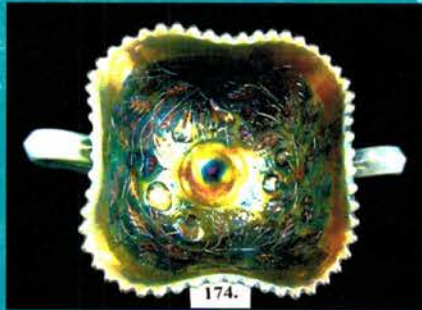
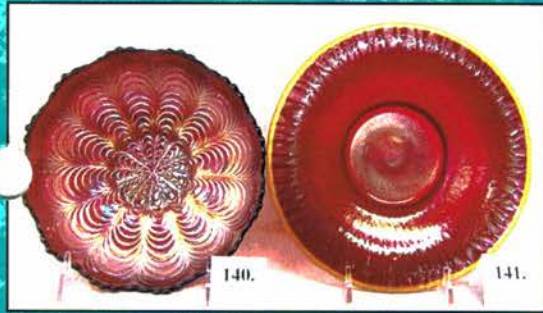
- 150 143. Fenton? 8" red Stretch rose bowl.
- 400 144. European 8" Stretch red vase, tight crimped edge
- 2000 145. N-WOOD 22" NUTMEG CUSTARD TREE TRUNK FUNERAL VASE. ONLY ONE I'VE EVER SEEN.
- 5000 146. N-WOOD 22" ELECTRIC BLUE TREE TRUNK FUNERAL VASE. THIS IS DEFINITION OF ELECTRIC!
- 7000 147. N-WOOD 20" WHITE TREE TRUNK FUNERAL VASE. BRUISE IN BASE OF THIS RARE BEAUTY. SUPER RARE
- 4000 148. N-WOOD 14" ELEC. PURPLE TREE TRUNK ELEPHANT'S FOOT FUNERAL VASE. SLIGHT PEELING ON TOP BUT FIND A BETTER ONE
- 3200 149. N-WOOD MARI. TOWN PUMP. RARE
- 5000 150. N-wood mari. Corn vase.
- 5000 151. N-WOOD IB MEMPHIS FRUIT BOWL SIZE 7 PC. PUNCH SET. VERY RARE AND NICE
- 3700 152. N-WOOD WHITE MEMPHIS 7 PC. PUNCH SET. FRUIT BOWL SIZE. RARE  
*THIS IS THE FIRST OF SEVERAL WONDERFUL PIECES OF WHITE IN THIS AUCTION!*
- 1450 153. N-WOOD WHITE ORIENTAL POPPY 7 PC. TANKARD WATER SET. FROSTY
- 550 154. Dugan white Grapevine Lattice tankard pitcher and tumbler.
- 950 155. Dugan white Heavy Iris 6 pc. Tankard water set.
- 550 156. Dugan white Dahlia 7 pc. Water set.
- 550 157. N-WOOD WHITE PAINTED JEWELLED TANKARD. ORIENTAL POPPY SHAPED BLANK. ONE OF A KIND!
- 200 158. IMPERIAL WHITE RANGER CRACKER JAR. RARE!
- 775 159. N-wood frosty white G & C cracker jar. Very scarce!!
- 550 160. N-wood 10" white G & C centerpiece bowl. Points turn in.
- 275 161. N-WOOD WHITE G & C CENTERPIECE BOWL. POINTS STRAIGHT UP.
- 135 162. N-wood white G & C master ICS bowl.
- 275 163. N-wood white Poppy pickle dish.
- 550 164. N-wood IB Poppy pickle dish.
- 450 165. Dugan 6" white Garden Path Variant plate.
- 50 166. Dugan 6" white Fish Scale and Beads bowl.
- 325 167. N-wood 12" white Thin Rib midsize vase.
- 1200 168. N-WOOD 12" SAPPHIRE THIN RIB MIDSIZE VASE. WOW
- 3000 169. FENTON 9" AO VINTAGE CRE BOWL. RARE
- 1900 170. FENTON 7" AO VINTAGE ROUND BOWL. RARE
- 450 171. N-wood AO Double Loop (Colonial) open sugar
- 400 172. N-wood AO Bushel Basket. Very Nice
- 975 173. N-WOOD 6" AO PEACOCK AT THE URN SAUCE. A NICE ONE!!
- 550 174. N-wood AO Fruits & Flowers bon bon. Super
- 300 175. N-wood AO Dandelion mug.
- 1500 176. N-WOOD AO SINGING BIRD MUG.
- 45 177. N-wood mari. Singing Birds mug.
- 35 178. N-wood mari. Singing Birds stippled mug.
- 625 179. N-wood green Singing Birds pitcher.
- 4500 180. M-BURG RADIUM MARI. HANGING CHERRIES POWDER JAR. ONLY ONE KNOWN.
- 375 181. M-BURG GREEN HANGING CHERRIES POWDER JAR. BOTTOM HAS BEEN GLUED BACK TOGETHER ON THIS RARITY! BUT EXTREMELY RARE.
- 2700 182. M-BURG 8" AMY. HANGING CHERRIES PLATE. ONLY 1 KNOWN.
- 4600 183. M-BURG 10" BLUE HANGING CHERRIES RUFFLED BOWL. ANOTHER BEAUTY. 1 OF 3 KNOWN.
- 2000 184. M-BURG 5" BLUE HANGING CHERRIES 3/1 SAUCE. Very rare
- 1200 185. M-BURG 5" BLUE HANGING CHERRIES RUFFLED SAUCE.
- 2800 186. M-Burg radium electric green Hanging Cherries pitcher. The Best!
- 150 187. M-Burg green Hanging Cherries tumbler.
- 120 188. M-Burg green Hanging Cherries Variant tumbler w/ground base (factory)
- 1500 189. M-BURG MARI. HANGING CHERRIES COMPOTE. PROBABLY THE TOUGHEST COLOR.
- 1000 190. M-BURG GREEN HANGING CHERRIES COMPOTE. Very nice
- 1000 191. M-BURG AMY. HANGING CHERRIES COMPOTE.
- 3800 192. M-Burg radium purple Hobstar & Feather giant rosebowl. SUPER
- 600 193. M-Burg 7" radium purple Tulip Scroll vase.
- 1300 194. M-BURG 10" EMERALD GREEN WHIRLING LEAVES SQUARE BOWL.
- 325 195. M-Burg 10" emerald green Fleur de lis footed round bowl.
- 1800 196. M-BURG GREEN WILD ROSE LAMP. A REAL NICE ONE!
- 8,500 197. M-BURG 10" RADIUM ELEC. PURPLE MILLERSBURG PEACOCK ICS BOWL. IF YOU ONLY COULD HAVE ONE PIECE OF M-BURG IN YOUR COLLECTION, THIS SHOULD BE IT!! THIS REALLY SHOULD BE ILLEGAL!
- 400 198. M-BURG 5" RADIUM ELEC. PURPLE MILLERSBURG PEACOCK SAUCE.
- 650 199. M-Burg 8" radium purple Courthouse bowl.
- 525 200. M-Burg 8" electric green Blackberry Wreath round bowl.
- 425 201. M-BURG 5" GREEN HANGING CHERRIES 3/1 EDGE SAUCE. VERY RARE SHAPE IN THIS COLOR!
- 2700 202. M-BURG RADIUM PURPLE POPPY SALVER.
- 1500 203. M-BURG RADIUM GREEN W/EMERALD HIGHLIGHTS POPPY SALVER.
- 800 204. N-WOOD 9" HOREHOUND GOOD LUCK PLATE. VERY RARE!! TINY FLICK ON CLEAT.
- 450 205. N-wood 9" amy Good Luck plate.
- 900 206. N-WOOD 9" BLUE GOOD LUCK STIPPLED PLATE.
- 4500 207. N-WOOD 8 1/2" AO GOOD LUCK PCE BOWL. SMALL CHIP AND LINE ON THE EDGE. ONLY A FEW KNOWN. HERES YOUR CHANCE. RARE
- 750 208. N-WOOD 8 1/2" HOREHOUND GOOD LUCK PCE BOWL, RIB BACK. NEVER SEEN ANOTHER.
- 500 209. N-wood 8 1/2" blue Good Luck PCE stippled bowl.
- 450 210. N-wood 8 1/2" blue Good Luck PCE bowl w/Ribbed back.
- 140 211A. Hand painted "Good Luck" sign by Glen Thistlewood. A definite one of a kind!!!!
- 300 211. N-wood 8 1/2" purple Good Luck PCE bowl.
- 1700 212. N-WOOD 8 1/2" AO G & C STIPPLED PCE BOWL.





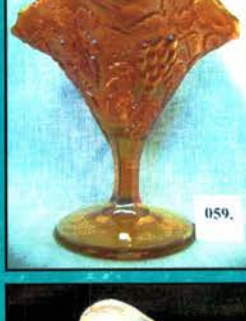
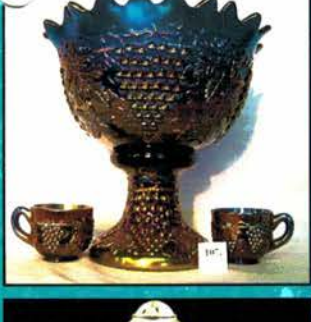
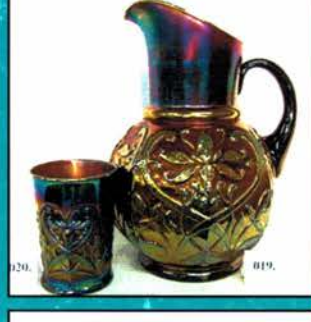
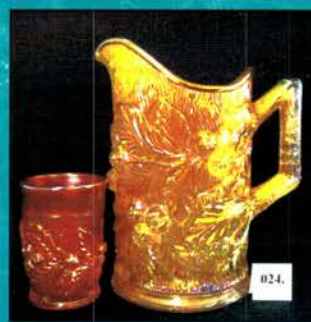






- 450 213. N-WOOD 8 1/2" IB G & C STIPPLED PCE BOWL.
- 1900 214. N-WOOD 8 1/2" IG GRAPE & CABLE STIPPLED RUFFLED BOWL. WOW, HOW RARE IS THIS?!!! DON'T MISS THIS ONE!
- 250 215. N-wood 7" IG Fruits & Flowers bowl.
- 700 216. N-wood 8 1/2" IG Hearts & Flowers bowl.
- 250 217. N-wood 8 1/2" IB Hearts & Flowers bowl.
- 200 218. N-wood 8 1/2" white Hearts & Flowers PCE bowl.
- 550 219. N-wood pastel AO Hearts & Flowers compote.
- 2700 220. N-WOOD 9" SAPPHIRE G & C STIPPLED PLATE. REALLY NICE PASTEL PLATE.
- 350 221. N-wood 9" dark horehound/rootbeer G & C plate.
- 1500 222. N-wood 9" mari. G & C stippled plate.
- 1000 223. N-wood 9" pastel mari. G & C stippled plate.
- 275 224. N-wood 10" pastel mari. G & C master ICS bowl. (These two pieces Defines pastel mari.!)
- 1200 225. N-WOOD BLUE PEACOCK AT THE FOUNTAIN 7 PC. WATER SET.
- 1200 226. N-wood ELECTRIC BLUE Peach pitcher. SCARCE
- 630 227. N-wood electric blue Peach tumblers. 6 x money
- 2700 228. DUGAN BLUE GOD & HOME 7 PC. TANKARD WATER SET. ONLY SET TO SELL IN YEARS!
- 2900 229. N-WOOD 8 1/2" IG THREE FRUITS STIPPLED BOWL. RARE
- 175 230. N-wood 8 1/2" white Three Fruits stippled bowl.
- 575 231. N-WOOD 8 1/2" AO THREE FRUITS STIPPLED BOWL. SCARCE
- 550 232. N-WOOD 8 1/2" AO/POWDER BLUE OPAL THREE FRUITS VARIANT STIPPLED BOWL. STRANGE AQUA BASE COLOR, WANTS TO BE POWDER BLUE.
- 600 233. N-WOOD 8 1/2" AO THREE FRUITS MEDALLION BOWL.
- 1800 234. N-WOOD 8 1/2" LIME ICE GREEN ROSE SHOW BOWL. VERY SCARCE AND PRETTY
- 1100 235. N-wood 8 1/2" IG Rose Show bowl.
- 925 236. N-WOOD 8 1/2" AO ROSE SHOW BOWL. NICE
- 7500 237. N-WOOD EMERALD GREEN G & C 8 PC. STIPPLED PUNCH SET. HOLY SMOKES
- 5500 238. N-WOOD BLUE G & C 8 PC. STIPPLED PUNCH SET. BEAUTIOUS!!!!!!!!!!!!!!
- 650 239. N-WOOD MARI. G & C 8 PC. STIPPLED PUNCH SET. VERY NICE
- 3100 240. N-WOOD 12" IB TREE TRUNK MIDSIZE VASE. VERY RARE AND PASTEL
- 625 241. N-wood 12" green Tree Trunk midsize vase.
- 500 242. N-wood 12" white Tree Trunk midsize vase.
- 4500 243. N-WOOD 12" LIME ICE GREEN TREE TRUNK MIDSIZE VASE. VERY SCARCE
- 625 244. N-WOOD 12" BLUE TREE TRUNK MIDSIZE VASE. NICE!
- 350 245. N-wood 12" amy. Tree Trunk midsize vase.
- 2600 246. N-WOOD 12" EMERALD GREEN TREE TRUNK MIDSIZE PLUNGER BASED VASE. A LITTLE BIT OF PEELING ON TOP RIM IS TRUMPED BY THE SPECTACULAR COLOR!
- 725 247. N-wood 12" purple Tree Trunk midsize plunger based vase.
- 550 248. N-wood 12" mari. Tree Trunk midsize plunger base vase.
- 750 249. N-WOOD 10" SAPPHIRE TREE TRUNK STANDARD VASE. THIS IS A SUPER PASTEL EXAMPLE! VERY HARD TO FIND THIS GOOD!
- 500 250. N-WOOD 11" IG TREE TRUNK STANDARD VASE. ANOTHER TOUGH TO FIND VASE
- 250 251. N-wood 10" elect. Blue Tree Trunk standard vase.
- 300 252. N-WOOD 11" AO TREE TRUNK VASE. SCARCE
- 300 253. N-wood 11" AO Four Pillars vase.
- 95 254. Fenton IB Double Dolphins compote.
- 200 255. Fenton IB Double Dolphin fan vase.
- 120 256. Fenton tangerine Double Dolphins fan vase.
- 55 257. Fenton vaseline Double Dolphins candlestick.
- 65 258. Fenton 12" wisteria Stretch bud vase.
- 85 259. Fenton 12" celeste Stretch bud vase.
- 425 260. INWALD ICE GREEN JACOBAN RANGER 5 PC. DRESSER SET. NEVER SEEN ANOTHER! SELLING CHOICE!
- 85 261. Inwald mari. Jacobean Ranger ring stand.
- 95 262. Inwald mari. Jacobean Ranger pin tray.
- 140 263. Inwald mari. Jacobean Ranger cologne (x 2)
- 200 264. Inwald mari. Jacobean Ranger tall powder jar.
- 235 265. Inwald mari. Jacobean Ranger short powder jar.
- 225 266. Fenton 9" white Leaf Chain plate.
- 525 267. Fenton 9" mari. Leaf Chain plate.
- 225 268. Fenton 9" mari. Holly plate.
- 175 269. Fenton 9" mari. Orange Tree plate.
- 400 270. Fenton 9" mari. Peacock & Grape plate
- 175 271. Fenton 9" mari. Vintage plate
- 425 272. Fenton 9" mari. Peacock at the Urn plate.
- 1150 273. N-wood purple Dandelion 7 pc. Tankard water set. Nice electric highlights.
- 1050 274. Fenton lt amy/ lavender Paneled Dandelion 7 pc. Tankard water set.
- 1150 275. Fenton mari. Orange Tree Scroll 7 pc. tankard water set. WOW!! SUPER COLOR!
- 1500 276. Imperial 18" elec. Purple Ripple funeral vase.
- 400 277. Imperial 18" mari. Ripple funeral vase.
- 650 278. Imperial 18" vaseline Ripple funeral vase.
- 475 279. M-BURG 10" LIGHT IRIDIZED CRYSTAL OHIO STAR VASE.
- 4800 280. M-BURG 10" EMERALD GREEN OHIO STAR VASE. VERY NICE VASE! TOP SHELF
- 1700 281. M-BURG 10" MARI. OHIO STAR VASE. WOW!
- 2500 282. M-BURG 10" PURPLE OHIO STAR VASE. NICE
- 175 283. M-Burg 10" crystal Ohio Star vase.
- 600 284. FLINT GLASS CO. NOVELTY FROG COVERED CANDY DISH, ICE GREEN
- 775 285. FLINT GLASS CO. NOVELTY FROG COVERED CANDY DISH, WHITE
- 3700 286. FLINT GLASS CO. NOVELTY FROG COVERED CANDY DISH, ICE BLUE
- 1500 287. FLINT GLASS CO. NOVELTY FROG COVERED CANDY DISH, LAVENDER
- 650 288. FLINT GLASS CO. NOVELTY FROG COVERED CANDY DISH, MARIGOLD
- 1200 289. JENKINS MARI. WIDE PANELED CHERRY SYRUP PITCHER W/LID. ONLY 1 KNOWN IN THIS COLOR. - 500
- 275 290. Czech mari. Classic Arts powder jar.
- 750 291. Westmoreland mari. Wild Rose syrup pitcher.
- 150 292. Wild Berry mari. powder jar. Rare!





- 300 293. 5" Woodsland mari. Vase.  
55 294. Imperial. 9" Mari. Lustre Rose plate.  
500 295. Imperial 9" mari. Scroll Embossed plate.  
50 296. Imperial 8" clambroth Scroll Embossed bowl.  
55 297. N-wood 7" light pearl Custard G & C plate.  
75 298. Fenton mari. Orange Tree powder jar.  
70 299. Dugan mari. Vintage powder jar.  
165 300. Dugan amy. Vintage powder jar.  
125 301. N-wood mari. G & C powder jar.  
65 302. White Advertising Shinola shoe shine bottle.  
85 303. White Snail whimsy paperweight vase.  
500 304. N-WOOD WHITE PEACOCK AT FOUNTAIN  
 WATER PITCHER. FANTASTIC PASTEL IRID.  
 VERY SCARCE!  
500 305. N-wood 10" white Peacock at Urn MIC bowl.  
 Another beautiful pastel! Scarce  
300 306. N-wood 9" IG Drapery vase. Very scarce!  
 Feet look OK.  
325 307. N-wood 8" pumpkin mari drapery vase. Super dark!  
 Feet OK  
250 308. N-WOOD 8" IB DRAPERY VASE. VERY SCARCE  
 COLOR. NICE! FEET OK  
550 309. IMPERIAL 4" SMOKE CORN BOTTLE VASE.  
 OUTSTANDING IRID. VERY SCARCE  
300 310. Imperial 4" dark mari corn bottle vase. Scarce  
275 311. Imperial 4" green Corn bottle vase.  
160 312. N-wood IG Acorn Burrs punch cup.  
275 313. IMP. ELEC. PURPLE CHATELINE TUMBLER.  
 RARE  
170 314. TEXAS "TIP OF THE HAT" LBJ ASHTRAY,  
 MARIGOLD.

---

*Pete, Paula and Jim Wroda's Auction staff  
 would like to thank you for participating in today's auction.*

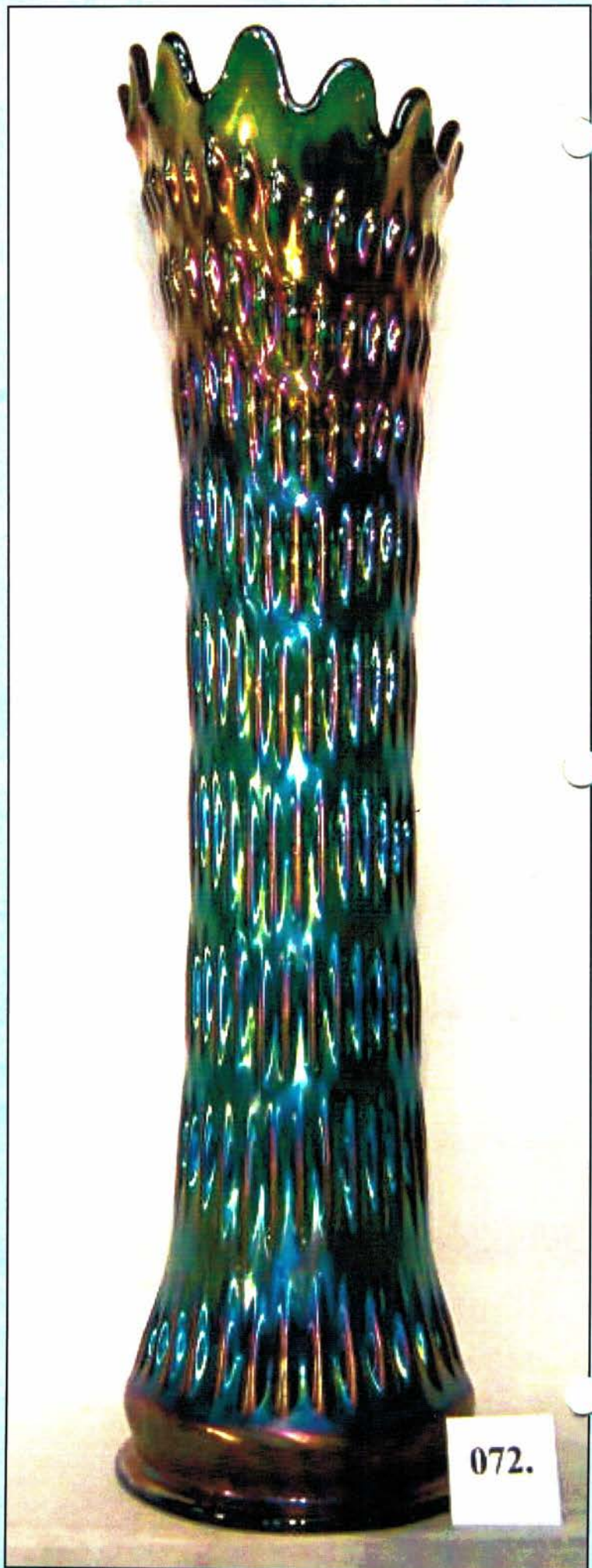
*Our next auction is the Keystone convention  
 in Harrisburg PA. next weekend. See you there!!*

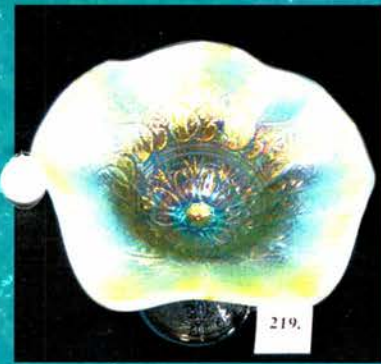
*Don't forget about making your reservation for  
 the Memorial weekend auction in Greenville Ohio.*

*We will be auctioning part of the  
 John and Jeanette Rogers collection!*

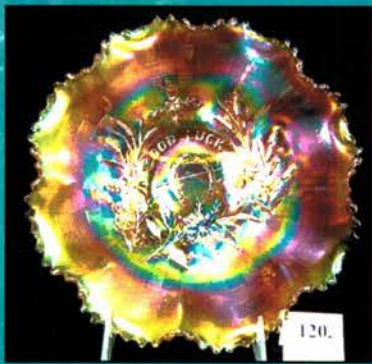
---

*~NOTES~*

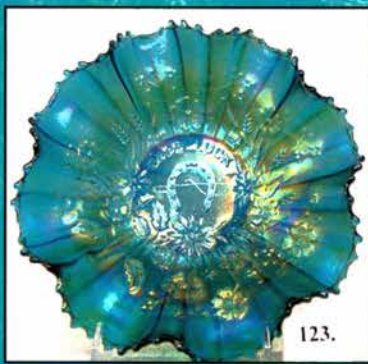




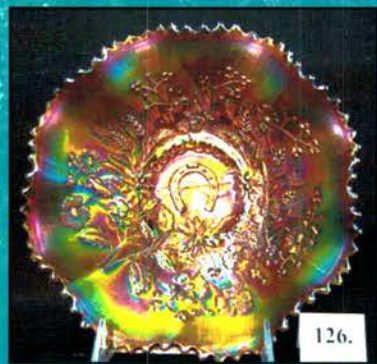
219.



120.



123.



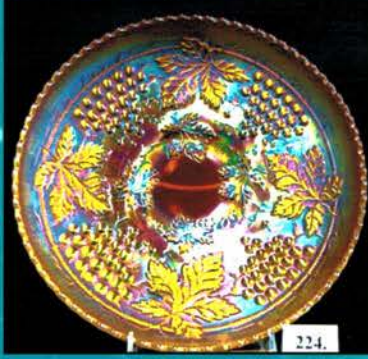
126.



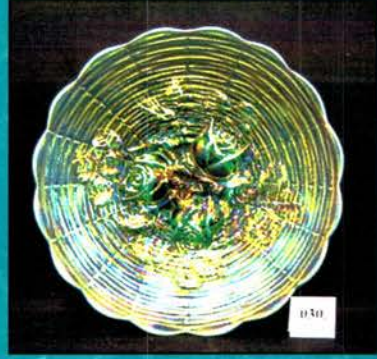
221.



129.



224.



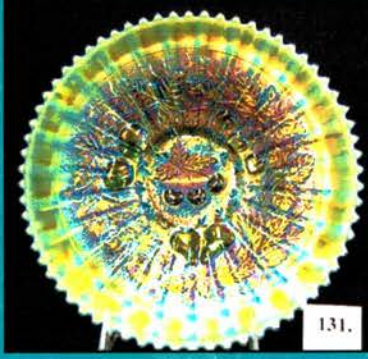
030.



033.



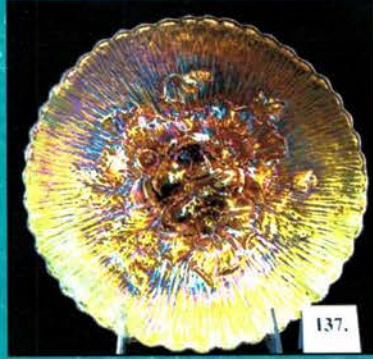
036.



131.



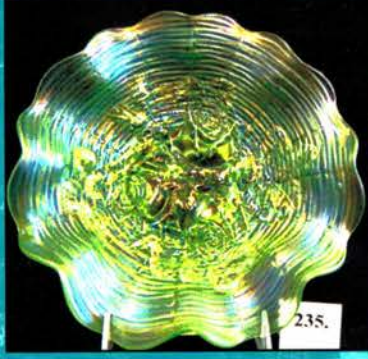
134.



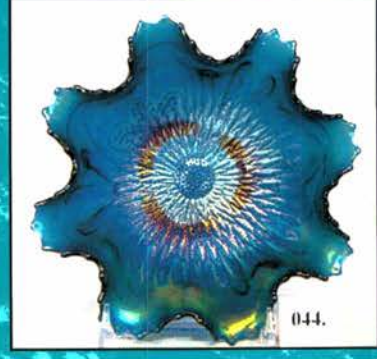
137.



232.



235.



044.



245.

24



249.

25

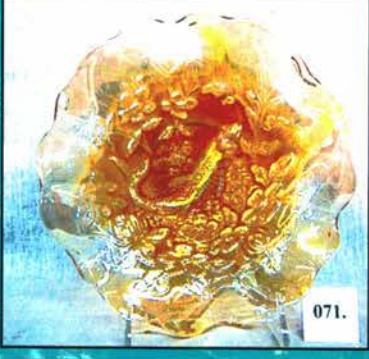
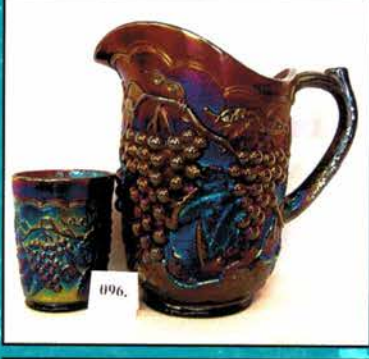
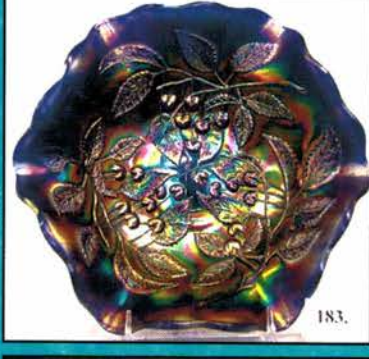
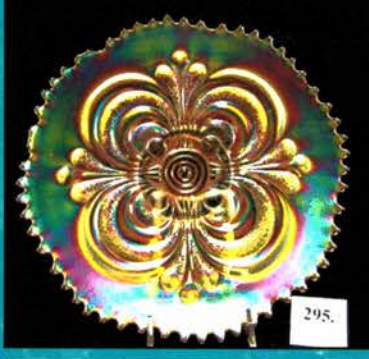
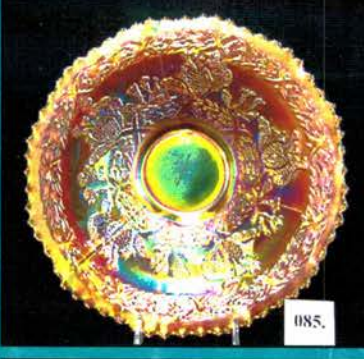
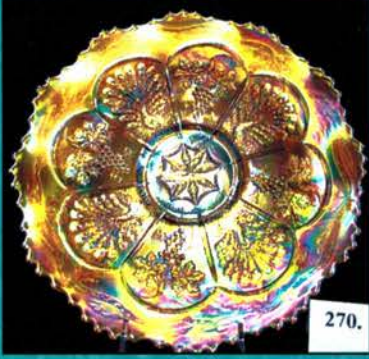
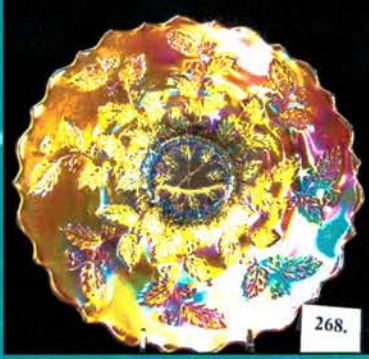
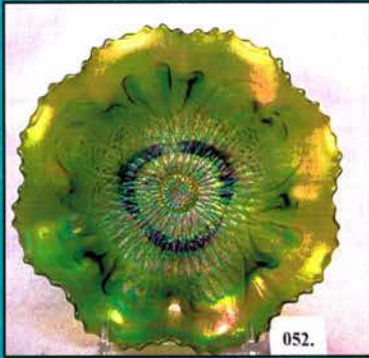


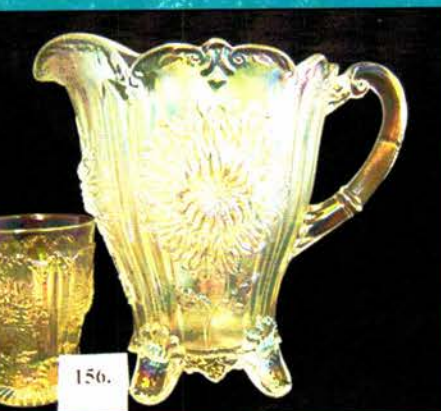
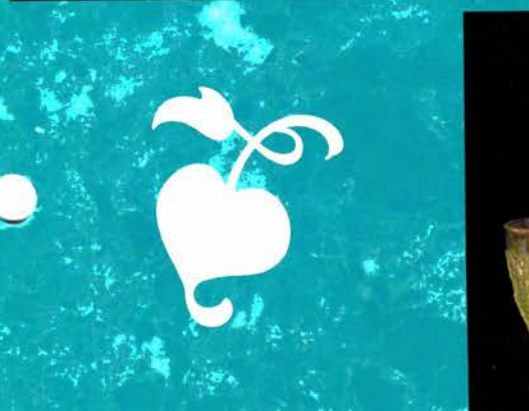
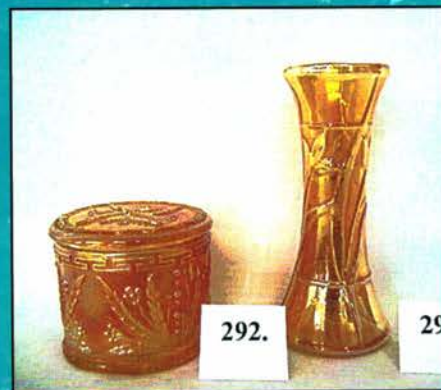
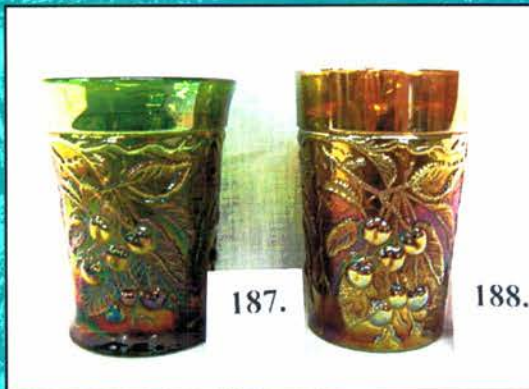
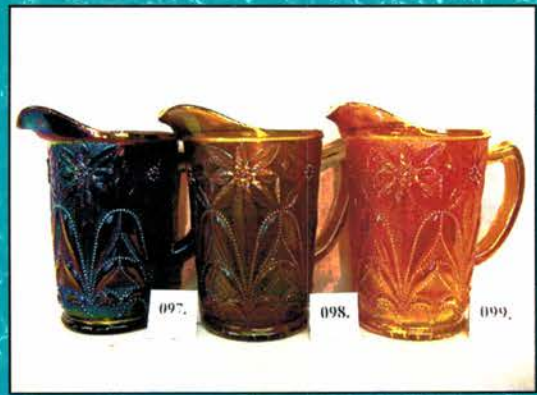
250.

25



186.



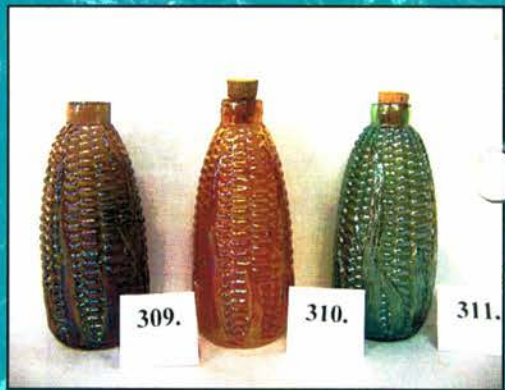




152.



163.



309.

310.

311.



255.

259.

254.

258.

256.

257.



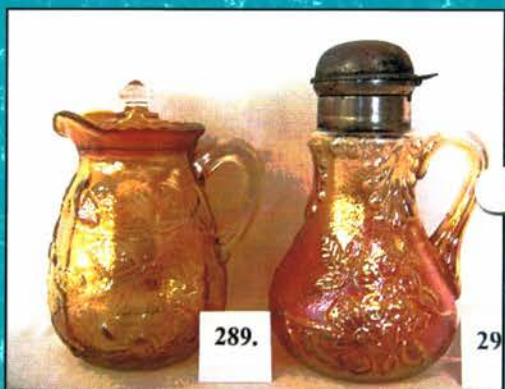
191.



078.



164.



289.

29



180.



150.

149.



088.

089.



308.

307.

306.



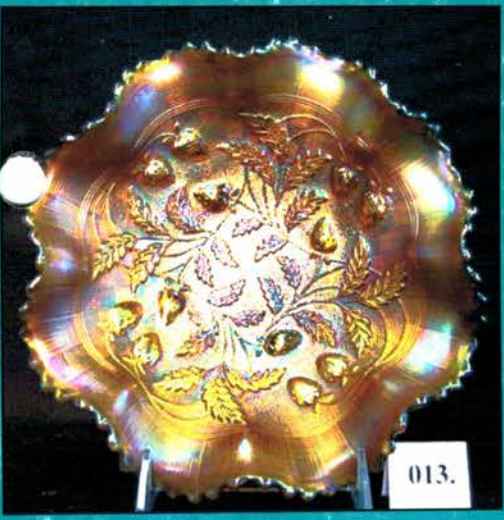
204.



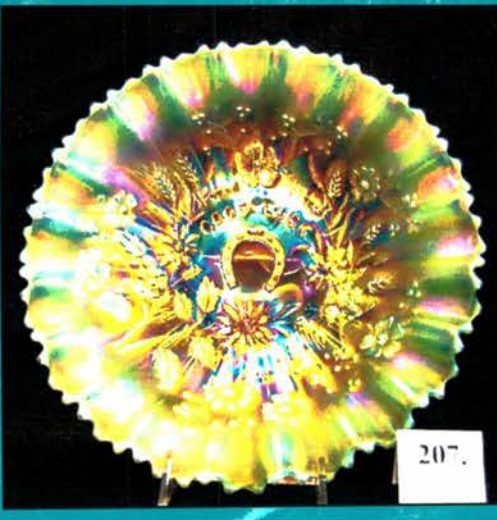
075.

076.

074.



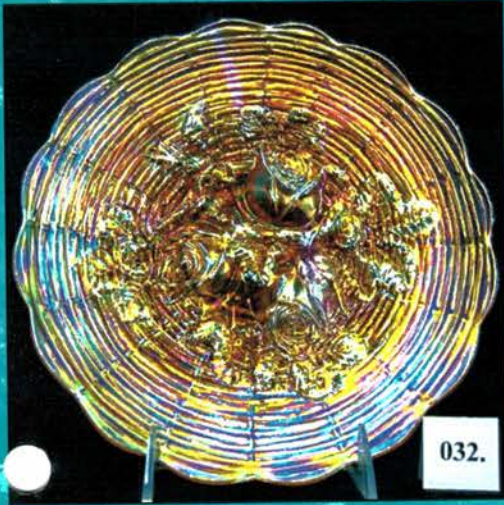
013.



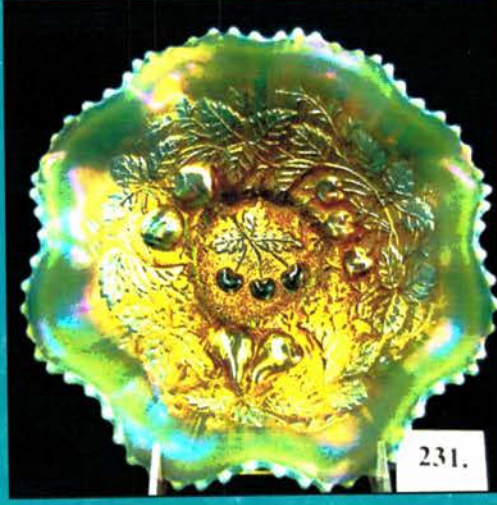
207.



229.



032.



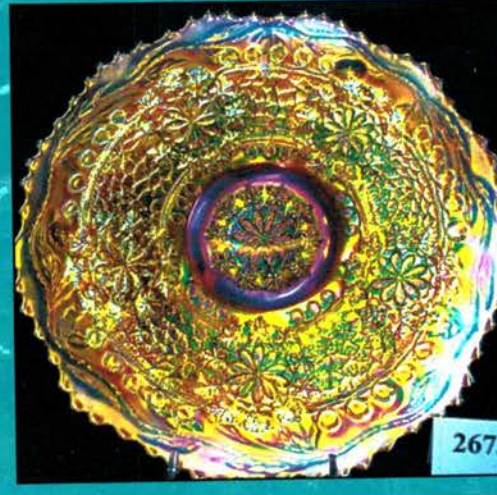
231.



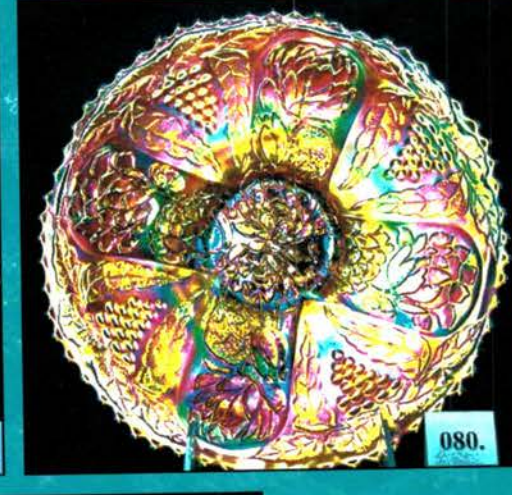
169.



084.

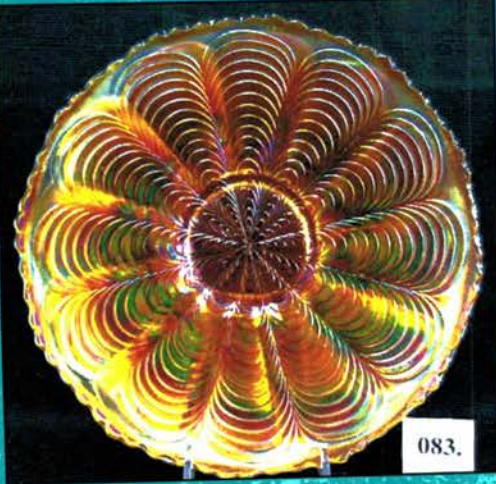


267.



080.

*Heart of  
America  
Carnival  
Glass  
Association  
Auction  
2006*



083.



195.

*The  
Bingham  
Carnival  
Glass  
Collection*

*Jim Wroda Auction Services*

C/O Midwest Auctioneers & Realty, Inc.  
5239 S.L. Rt. 49 South  
Greenville, OH 45331  
[www.jimwrodaauction.com](http://www.jimwrodaauction.com)

PRESORTED  
FIRST CLASS MAIL  
U.S. POSTAGE  
**PAID**  
CELINA, OH  
PERMIT NO. 99

\*\*\*FIRST CLASS DELIVERY\*\*\*



*Heart of America Carnival Glass Association Auction  
Saturday, April 29, 2006 at 9:30 a.m.*

*(This is a public auction. You do not need to be a member of this club to participate in the auction)*

005\*001\*\*\*\*\*3-DIGIT 465

Lee Markley  
PO Box 306  
502 N Broadway  
Mentone IN 46539-0306

