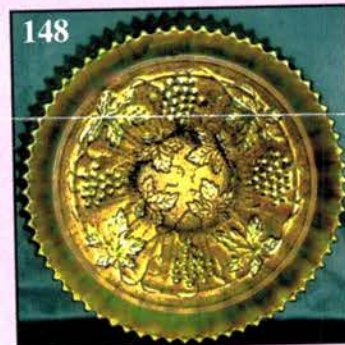
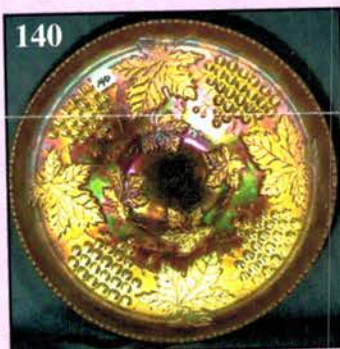
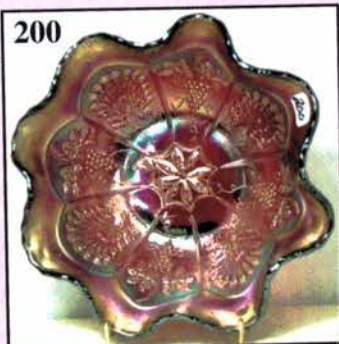
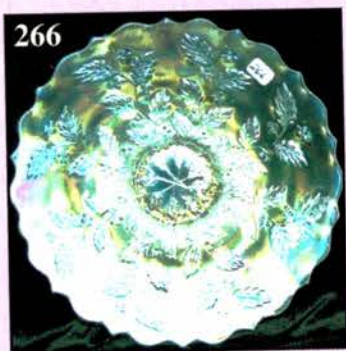


CARNIVAL GLASS ESTATE AUCTION

Saturday, February 18, 2006 9:00 a.m.

TERRY GOLD COLLECTION

Quality, Iridescence, and Variety for All



Held By the Mickey Reichel Antique & Auction L.C.

Office: 660-882-5292 • Home: 660-882-5283

 **NEW WEB SITE: www.AWK-SHN.com**

E-mail: mreichel@AWK-SHN.com

Held Inside the Mickey Reichel Auction Center

1 Mile North of I-70 on Hwy. 5, Exit 101, Boonville, Missouri • 20 Miles West of Columbia, MO on I-70



Preview Friday 12 p.m. - 5 p.m. and 7:30 a.m. - 9:00 a.m. Day of Auction

TERMS: Cash or Good Check, VISA and MasterCard accepted.



4% Clerking Fee on all purchases except for payment of cash or check. Proper I.D. required.

WEB SITE: www.AWK-SHN.com

ABSENTEE BID POLICY:

WRITE IN BIDS: If you are unable to attend the auction, we will be happy to accept absentee bids which must be received by THURSDAY, FEBRUARY 16, 2006. Don't Delay. **E-Mail: mreichel@AWK.SHN.com** ← ← ← ←

FOR AUCTION PRICE RESULTS: Send \$3.00 and Large S.A.S.E. to 18350 Hunters Ridge Ct., Boonville, MO 65233-2971

PLEASE NOTE: There is a **\$5 handling charge for each successful bid which will be added to the selling price** for all write-in bids. This is in addition to the cost of postage, insurance and packing. Your write-in bid will be entered just as if you are present and bidding. **Successful bidders will be notified in 1 to 3 days by the auctioneer (so be sure to include your phone number).** Direct mail bids to Auctioneer **Mickey Reichel, 18350 Hunters Ridge Ct., Boonville, MO 65233-2971.** Terms: Cash or Check accepted with proper I.D. and Social Security Number and References. Announcements made day of the auction supercede all printed material. Not Responsible for Accidents or Sold Items.

No return on any items once they leave the Auction Center (No Exceptions).****

Call for additional information: 660-882-5292 days or 660-882-5283 evenings before 9:00 p.m.

FAX: 660-882-5292 (evening hours start FAX transmission after beep)

MAIL BIDS: Items are bid on in perfect condition with average or above iridescence OR as listed in the brochures. Bids will not be carried out when damage on an item has been found during the auction.

PEOPLE PRESENT AT AUCTION ARE RESPONSIBLE FOR FINDING ANY PINHEADS, WEAR, SPOTTINESS, MANUFACTURER'S DEFECTS OR ANY OTHER MINOR FLAWS, ETC. *****

NOTE: Read each line, as we have accentuated the type of no particular piece, all are special.

Make Reservations EARLY at one of these local motels:

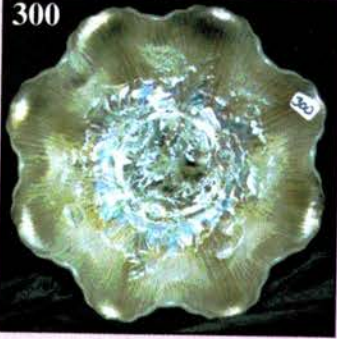
Days Inn: 660-882-8624 • Comfort Inn: 660-882-5317 • Super 8: 660-882-2900 • Holiday Inn: 660-882-6882

Auction Consists of Rarity, Great Irid. and Variety

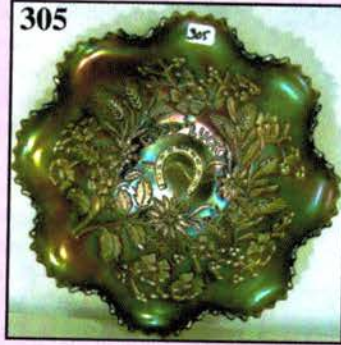
- | | |
|--|---|
| _____ 1. Teal - Louisa - Rosebowl - Scarce | _____ 18. Deep P - Imp. Lustre Rose Fernery Bowl - Rare ? |
| _____ 2. Rich Amber - Louisa Rosebowl | _____ 19. Clambroth - Imp. Lustre Rose Fernery Bowl - Plain Interior - Loaded w/Irid. |
| _____ 3. Rich M - 4-1/2" Frosted Block Rosebowl | _____ 20. Olive/Russet - Imp. Lustre Rose Fernery Bowl - Rose Interior - Scarce Color |
| _____ 4. Dk. M - 5" Star/File Rosebowl | _____ 21. Clambroth - 9-5/8" Star Medallion Plate - Great Radium - Neat Plate |
| _____ 5. Helios G - Imp. Open Rose Rosebowl | _____ 22. Violet - 8" Ruffled Imp. Lustre Rose Bowl - NEAT |
| _____ 6. Scarce Amber - Imp. Open Rose Rosebowl | _____ 23. Radium M - Imp. Hobstar/Flower Compote - Pumpkin |
| _____ 7. Dk. Amber - Imp. Grape Rosebowl - Scarce | _____ 24. Olive/Russet - Radium, Imp. Hobstar/Flower Compote - WOW! |
| _____ 8. M - Garden Path (Vt) Large Rosebowl | _____ 25. Clambroth - Iron Cross Mark - Waffle Block, Cream/Sugar |
| _____ 9. P - Beaded Cable Rosebowl w/Rayed Interior | _____ 26. Fantastic Radium M - Imp. 5-1/2" Thumbprint/Ovals Vase - Charming |
| _____ 10. AO - Beaded Cable Rosebowl - Pastel Irid. | _____ 27. M - 5-3/4" Thin Rib/Drape Imp. Vase |
| _____ 11. Beautiful M - Beaded Cable Rosebowl w/Rayed Interior | _____ 28. Scarce Smoke - 6-1/2" Morning Glory Radium Vase |
| _____ 12. Quality W - Beaded Cable Rosebowl - Very Pretty | |
| _____ 13. Beautiful AO - N Drapery Rosebowl | |
| _____ 14. Dk. M - Mirrored Lotus Rosebowl - Seldom Seen | |
| _____ 15. PO - Honeycomb Rosebowl - Extra Nice | |
| _____ 16. Amber - 9" Imp. Open Rose Plate - Great Example | |
| _____ 17. M - 9" Imp. Open Rose Plate - Also a Dandy | |

29. Pink Crystal - 8" Squatty Ripple Vase - Rib Interior - Non Irid.
30. **Light Teal - 7" Ripple Vase (Glow) - Scarce Size**
31. Lime G - Imp. Grape, Ruffled Compote
32. **Pastel Smoke - 10" Beautiful Ripple Vase**
33. Elec. P - 10" Ripple Vase - Favorite
34. **Radium Amber - 10-3/4" Ripple Vase - A Beauty**
35. B - 12-1/2" April Showers Vase - Pl. Interior
36. **A - 11-3/4" April Showers Vase w/Peacock Tail Interior**
37. G - 10-1/2" April Showers Vase w/Peacock Tail Interior
38. **G - N 11" Tree Trunk Vase**
39. Olive - N 11-1/4" Thin Rib Vase - Extra Nice
40. **Dk. Smoke? - N 9-3/4" Thin Rib (Vt.) Vase - Rare Color - Great Item - Different**
41. Beautiful M - Footed Prism Panels, 9-1/2" Vase
42. **M - N 12-1/2" Mid Size Tree Trunk Funeral Vase - Color Top to Bottom**
43. M - N 13-1/2" Mid Size Thin Rib Funeral Vase - Pinks - Really Nice
44. **SCARCE M - 8-1/2" Colonial Lady (Vt.) Vase - Lge. - Big Beauty**
45. Squatty M - 6-3/4" Long Thumbprint Vase
46. **Clambroth - Star Medallion Celery Vase - Scarce**
47. M - 6" Heavy Prism English Celery Vase
48. **Beautiful M - 5" Western Thistle Vase**
49. G - 13" Mid Size Hobnail or Rustic Vt. Vase - 4-1/2" Base, 5-3/4" Top (NICE)
50. **Rare AO - N 10-3/4" Diamond Pts. Vase - Base Broken - Reglued - Save on this one**
51. Horehound - N 10-1/4" Diamond Pts. Vase - Extraordinary Color
52. **Pump. M - 4-3/8" Squatty Flute Flower Arranger, 6" Opening - Impressive**
53. P - MLBG Radium Hobnail Rosebowl
54. **P - MLBG Holly, Short Stemmed, 6" Rnd. Compote - Maybe a First**
55. M - MLBG Boutonniere Ruffled Compote - Satin
56. **Lg. M - MLBG? - Whimsey, Hobnail, Giant Rosebowl - Few Known? - Radium**
57. M - 9" Ruffled Feathered Arrow Bowl - Limited
58. **Dk. M - MLBG Hobnail Swirl Rosebowl - Crowd Pleaser**
59. A - MLBG 5-3/4" ICS Blackberry Wreath Radium Bowl
60. **Scarce G - MLBG 10" Blackberry Wreath Radium Bowl - Big Dandy**
61. M - MLBG 8" Ruffled Little Stars Bowl - Extra Nice
62. **M - MLBG 8-1/2" ICS Seaweed Bowl - Shape/Size a Rarity**
63. M - MLBG 10-1/2" Ruffled Rosalind Bowl - Crowd Pleaser
64. **Outstanding G - 10" Ruffled Rosalind Bowl - Standing Ovation**
65. A - 10" Ruffled Rosalind Bowl - Vibrant
66. **Radium P - MLBG 8-1/4" Ruffled Holly Sprig Bowl - Head of the Class**
67. A - MLBG 10" Ruffled Whirling Leaves Bowl - Satin
- 68A. **G - 7-1/4" Fenton Peacock Tail Ruffled Bowl (HORLACHER Adv. on Back)**
68. **Pumpkin M - 8-1/4" Fenton 3/1 Edge Peacock Tail Bowl (Really Neat Pattern)**
69. B - 6-1/2" ICS Fenton Peacock Tail Bowl - Scarce
70. **G - 9" CRE Fenton Peacock Tail Bowl - A Big Boy**
71. G - 8" ICS Fenton Peacock Tail Bowl - Impressive Shape
72. **Rich M - ICS Fenton Peacock Tail Bowl - Impressive Shape**
73. A - 6" Round Fenton Peacock Tail Bowl - Base CHIP
74. **Scarce A - 6" Fenton Peacock Tail Tri Corner Plate**
75. G - 7" Ruffled Peacock Tail Bowl
76. **B - Fenton Ruffled Peacock Tail Compote - NICE**
77. G - Fenton Ruffled Peacock Tail Compote
78. **A - Fenton Ruffled Peacock Tail Compote - Scarce Color**
79. Scarce G - 9" Ruffled Plaid Bowl
80. **A - 9" Ruffled Plaid Bowl - Tough Color**
81. M - 9" Ruffled Plaid Bowl
82. **Beautiful B - 9" Ruffled Plaid Bowl**
83. M - Imp. Flute #3939 Punch Bowl w/Base - Nifty
84. **P - 9", Low, 10 Ruffle Apple Blossom Twigs Bowl**
85. Pump. M - Dugan 9" Vintage Grape, Dome Base, Bowl - Seldom Offered
86. **Marigold Flashed - 4" Tumbler - 1st I've Seen w/Daisy & Button Base**
87. Marigold Flashed - Miniature 1-7/8" Tall Mug
88. **M Flashed - Boot Candy Container - 3-1/4" Tall**
89. Aqua - Butterfly 4" Pin Dishes - 2 x \$
90. **P - N Grape/Cable Sweetmeat - Lid Only**
91. M - Daisy Cut Bell - Original - Nice Find - Rare
92. **M - Lightning Flower Nappy - Handful Known**
93. Elec. P - 5-1/2" Imp. Scroll Embossed Bowl w/File Ext.
94. **A - Slag 10" Low, 3/1 Edge, Fenton Vintage Grape Bowl - Most Unusual - Rim Nick**
95. M - Spat. Ftd., 8" Dragon Lotus Bowl w/Opal Tips
96. **Great Little M - 6-3/8" Little Flowers Plate**
97. Fantastic Radium Smoke - 7-1/2" Frosted Block Plate
98. **M - 6" Tri Corner Vintage Grape Fenton Plate - Base Chip**
99. G - Fenton 6-1/2" Stippled Rays Tri Cornered Plate
100. **B - Fenton 7-1/2" Radium Vintage Grape Plate**
101. A - 6-1/4" WM Scales Plate
102. **M - 6-3/8" Persian Medallion Plate - Orange Tree Reverse Pattern**
103. Radium Pastel M - 7-1/2" Pillar/Flute Plate - Outstanding
104. **B - 7-1/2" Leaf Chain Plate - Neat Size**
105. M - 7" Grapevine/Lattice Plate
106. **Soft Radium M - 6-1/2" Round Pinecone Plate**
107. Pink? - Persian Garden 6-1/4" Plate, BW Ext., Marigold Overlay - Great Look
108. **M - 7" Fishscale/Beads Plate - Multi Irid.**
109. M - 11", ICS Ball Ftd. Stag/Holly Bowl - Extra Nice
110. **Beautiful M - Ftd. Orange Tree Orange Bowl**
111. PO - Dugan 11" Smooth Ray, Lge. Bowl - Jewel Heart Ext.
112. **Dk. A - 9-1/2", 3/1 Edge, Feathered Serpent Bowl**
113. Beautiful M - Fenton 9-3/4" Ftd. Ruffled Poinsettia/Lotus Bowl
114. **M - Rnd., Butterfly/Berry, 7 pc., Ftd. Berry Set - Complete - Neat Set**

300



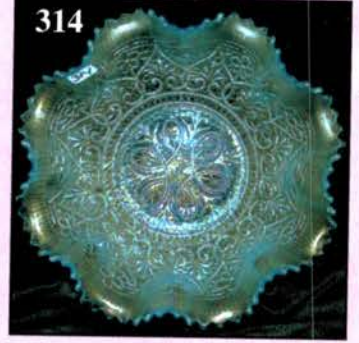
305



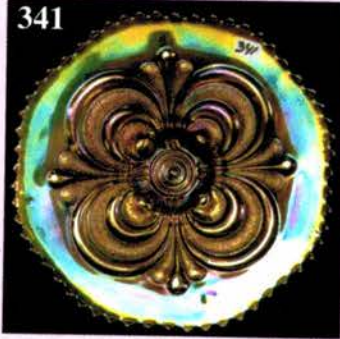
306



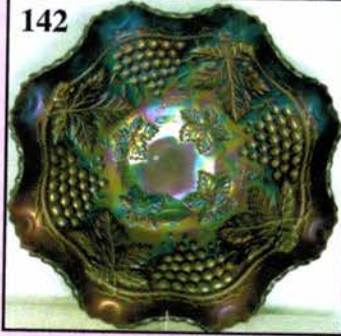
314



341



142



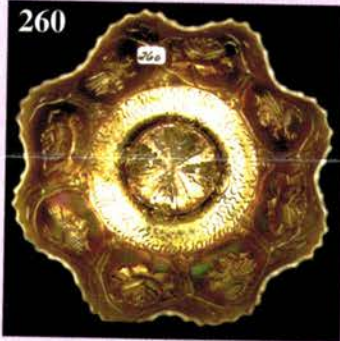
151



150



260



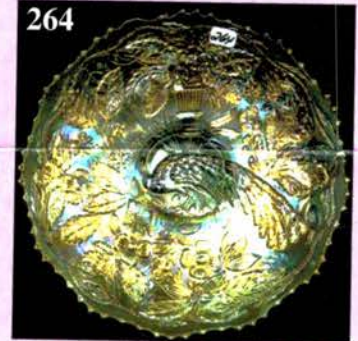
310



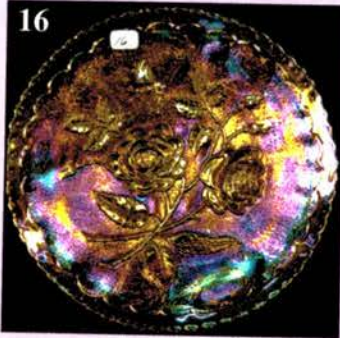
284



264



16



308



146



282



301



302



303

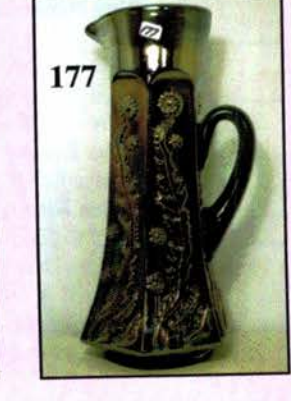
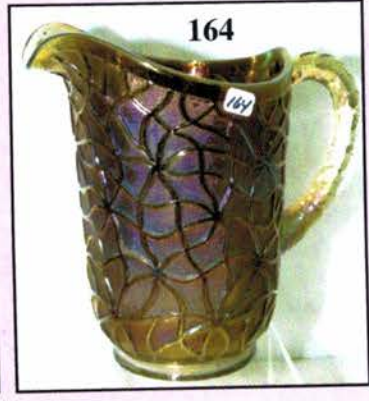
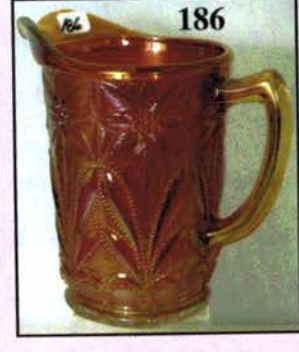
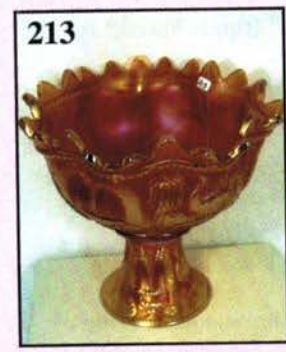
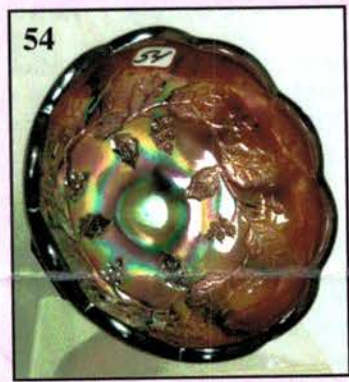
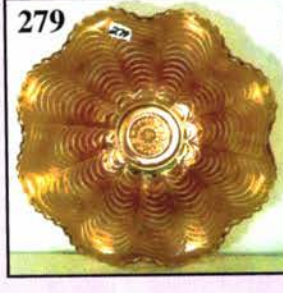
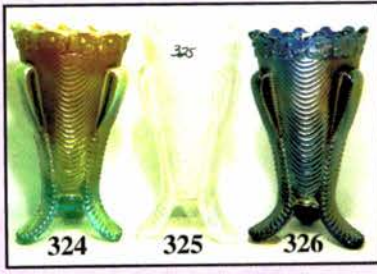
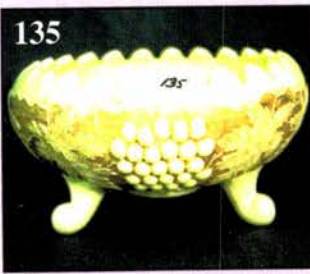


304



115. Cobolt B - 2 Row, O.E. Basket - 2 Sides Up
116. **Soft B - 9" Ruffled Orange Tree Bowl w/Trunk Variant**
117. Rich A - 8-1/4", 3/1 Edge Autumn Acorn Fenton Bowl
118. **G - Spat. Ftd. 7-3/4" ICS Dragon/Lotus Bowl**
119. Cobalt B - 9" Collar Base Ruffled Dragon/Lotus Bowl
120. **Em. G - Fenton 9" Ruffled Heart/Vine Bowl (Bearded Berry Ext. RARE)**
121. Dk. M - 8-3/4" Fenton Ruffled Holly Bowl - A Beauty
122. **Soft B - Collar Base, 9", Peacock/Grape Ruffled Bowl - Electric Highlights - WOW!**
123. G - N 8-1/2" Grape/Cable Ruffled Bowl - BW Ext.
124. **P - 6-1/2" Round Imp. Heavy Grape Bowl - Electric - Eye Catcher**
125. Soft A - Dugan Beaded Basketweave - Nice Find
126. **Vas. O - 2001 HOACGA Hatpin Holder**
127. P - N Peacock/Fountain Sugar Bowl w/lid - Wonderful
128. **Scarce G - N Grape/Cable Hatpin Holder**
129. M - N Grape/Cable Sugar Bowl w/lid - Pink Highlights
130. **P - N Grape/Cable Spooner - Base Chips, But Lovely**
131. P - N Grape/Cable Cream Pitcher - Golds, Purples
132. **Custard Nutmeg - N Non Irid Beaded Cable Rosebowl - Scarce**
- 133a. Milkglass Custard - Prayer Rug Bonbon
133. Pearlized Custard - N Grape/Gothic Arches Tumbler - Scarce
134. **Custard Nutmeg - Grape/Cable Stippled Banded Banana Bowl**
135. Custard Nutmeg - N Grape/Cable Stippled Centerpiece Bowl - Turned In
136. **G - Whimsey N Grape/Cable Ruffled Bowl from Tumbler - Lots of Irid.**
137. G - N Grape/Cable Cologne Bottle w/Stopper - Interior Fracture - Scarce & Pretty
138. **Lav. - N Grape/Cable Cologne Bottle w/Stopper**
139. M - N Grape/Cable Cologne Bottle w/Stopper - Heat Crack in Stopper
140. **Outstanding M - N Grape/Cable 10-1/2" ICS Bowl**
141. P - N 10-1/2" ICS Grape/Cable Bowl w/Elec. B Highlights
142. **Purple - N 11" Ruffled, Lge., Grape/Cable Collar Base Bowl - Great Find**
143. Beautiful M - Grape/Cable, 5" Round Pedestal Sherbet Dish
144. **Scarce Radium M - Grape/Cable Cracker Jar w/Lid - Pinks, Blues - A Beauty**
145. Purple - PCE Grape/Cable Bowl - BW Ext. - Real Beauty
146. **P - 9" Elec. Grape/Cable Vt. Plate w/Plain Ext.**
147. P - N Grape/Cable Whimsey Tri-Corner Dish from Punch Cup - Seldom Offered
148. **Unique G - N 9" Stippled Grape/Cable Vt. Plate w/Rib Ext. - Seldom Offered Also**
149. P - N Grape/Cable, 6-1/2", 2 Sides Up Card Tray Plate - Limited
150. **W - N Grape/Cable, 5-3/4", Turned Up Saucer/Cup - Very Scarce**
151. Lav. - N Grape/Cable, 6-1/4", Flared Saucer/Cup
152. **Multi Elec. P - N Grape/Cable Banana Bowl - Well Defined - Extra Nice**
153. Way Above Ave. P - N Grape/Cable, 7 pc. Water Set
154. **Dk. Rich M - Imp. Windmill Water Pitcher**
155. Dk. Rich M - Imp. Windmill Tumbler
156. **Beautiful G - N Dandelion Tumbler**
157. Dk. M - Very Scarce, Flute #5 Tumbler
158. **Scarce B - Fenton (Vt.) Floral/Grape Water Pitcher - Seldom Seen**
159. M - Fenton, Paneled Dandelion Tankard Water Pitcher
160. **M - Paneled Dandelion Tumblers - 5 x \$**
161. B - Stork in Rushes Tumbler
162. **Radium Pump. M - Fashion Tumbler**
163. P - Signed Fenton Butterfly/Berry Tumblers - 2 x \$ - Contemporary
164. **Scarce Smoke - Imp. Soda Gold Water Pitcher - It's Pretty**
165. Scarce Smoke - Imp. Soda Gold Tumbler
166. **Pastel M - Imp. Soda Gold Water Pitcher - Blue Irid.**
167. Dk. M - Imp. Soda Gold Tumbler
168. **Scarce Clambroth - Imp. Lustre Rose Water Pitcher - Smooth Interior**
169. Scarce Clambroth - Imp. Lustre Rose Tumbler
170. **Dk. Rich Amber - Lustre Rose Water Pitcher**
171. Gorgeous Pastel M - Maple Leaf Water Pitcher - Great Radium - Real Beauty
172. **P - N Peacock/Fountain Water Pitcher - Blues, Purples, Golds - Tough to Find**
173. A - Peacock/Fountain Tumbler - Dugan Example
174. **Dk. M - Blackberry Block Tankard Water Pitcher**
175. M - Blackberry Block Tumbler
176. **Fantastic B - Fenton Dandelion Paneled Tankard Water Pitcher**
177. Fantastic G - Fenton Dandelion Paneled Tankard Water Pitcher
178. **Outstanding G - Fenton Dandelion Paneled Tankard Tumbler**
179. Fantastic A - Fenton Dandelion Paneled Tankard Water Pitcher
180. **Scarce A - Paneled Dandelion Tumbler**
181. M - Fenton Paneled Dandelion Tankard Water Pitcher - Another Dandy
182. **Dk. M - Paneled Dandelion Tumbler**
183. Deep P - Dugan Maple Leaf Tumbler
184. **Beautiful P - Dugan Wreath Cherry Tumbler - Great Detail**
185. Clambroth - Imp. Star Medallion Milk Pitcher
186. **Radium Pump. M - Imp. Poinsettia Milk Pitcher - Top Shelf Item**
187. Radium Smoke - Imp. Star Medallion Milk Pitcher
188. **Stunning Smoke - Imp. Poinsettia Milk Pitcher**
189. Clear Base - Imp. Frosted Block Milk Pitcher w/Marigold Top
190. **M - Imp. Beaded Acanthus Milk Pitcher - Real "Toughie"**
191. Radium M - Rindskopf Fans Milk Pitcher - Makes a Statement
192. **Dk. M - Radium, #474, Milk Pitcher - Great Irid.**
193. M - Field Thistle, 5-1/4" Tall, Pitcher - U.S. Glass
194. **M - Brockwitz, Moonprint, 5-1/4" Tall, Stemmed Pitcher - Neat Looking**

- _____ 195. Radium Lav. - Sowerby Pineapple Creamer - Nice Find - Scarce
- _____ 196. **M - Thorn/Thistle Cream Pitcher - Rich Color**
- _____ 197. Rich M - Sowerby, Sea Thistle Cream Pitcher
- _____ 198. **M - Paneled - Pulled Thumbprint Creamer (Pattern ???)**
- _____ 199. M - Apple Panels Cream/Sugar Breakfast Set
- _____ 200. **Magnificent Red Amberina - Spat. Ftd. Peacock/Grape Ruffled Bowl - A Winner!**
- _____ 201. Red - 6-1/2" Fenton Holly Ruffled Hat - Manufacture Sharp Point on Edge - So What! A Beauty
- _____ 202. **Reverse Amberina - 6" ICS Stippled Rays Bowl**
- _____ 203. RED - Fenton, 7", ICS Grape/Cable Collar Base Bowl - A Real Winner, Colors There
- _____ 204. **Marigold Over Moonstone - Fenton, 7-1/2", ICS Grape/Cable Bowl - True Rarity & Pretty**
- _____ 205. Lav. Slag - 7-1/4", 6 Ruffle, Rare Color, Peacock/Dahlia Bowl - Neat Base Look
- _____ 206. **B - 7", 6 Ruffle Mirrored Lotus Bowl - Classic Pattern - Seldom Seen**
- _____ 207. M - 8", Fenton Ruffled Acorns Bowl - Lav. Opal Tips
- _____ 208. **P - Dugan, Many Fruits Punch Bowl w/Ruffled Base, 4 Cups - (Bowl Int. Crack) A Beauty**
- _____ 209. M - Dugan, Many Fruits Punch Bowl w/ Ruffled Base, 6 Cups - Nicely Matched
- _____ 210. **Elec. G - Wreath Rose, 12" Round Punch Bowl w/Base - No Cups - Greens, Golds, Pinks**
- _____ 211. Elec. A - Wreath Rose Punch Bowl w/Base - Vintage Grape Interior "Luscious"
- _____ 212. **Dk. M - 11-1/2" Ruffled Imp. Flute #3939 Punch Bowl w/Base**
- _____ 213. M - N Peacock/Fountain Punch Bowl Base w/6 Cups - Bowl Interior Loaded w/Pinks - Old Favorite
- _____ 214. **G - Wreath Rose Punch Cups, Vintage Gr. Interior - 6 x \$ - Great Find**
- _____ 215. P - N Peacock/Fountain Punch Cups - 4 x \$
- _____ 216. **Rare Lav. Smoke - N Peacock/Fountain Punch Cup**
- _____ 217. M - Stork in Rushes Punch Cups - 3 x \$
- _____ 218. **Lime - N Memphis Punch Cup - Rim Bruise - Very Rare**
- _____ 219. Rare Amber - Imp. Grape Punch Cup
- _____ 220. **P - S Repeat Punch Cups - 2 x \$**
- _____ 221. W - Orange Tree Punch Cups (Both Chipped) - 2 for 1 Price - Scarce
- _____ 222. **P - Diamond/Sunburst Decanter - No Stopper - Outstanding Irid.**
- _____ 223. P - Diamond/Sunburst Wine Glass - Straight Top
- _____ 224. **M - Octagon Wine Glasses - 2 x \$**
- _____ 225. P - Diamond/Sunburst Wine Glasses - 2 x \$ - Flared Tops
- _____ 226. **Scarce M - Star/File, 4" Tall Wine Glass**
- _____ 227. G - Imp. Grape Wine Glass - Base Glows
- _____ 228. **Clear Base - Imp. Grape Wine Glass - Marigold Top - Smooth Int.**
- _____ 229. Pump. M - Imp. Grape Wine Glass - Rib Interior
- _____ 230. **Lime G - Imp. Grape Wine Glass - Base Glows**
- _____ 231. Scarce P - Checkerboard Water Goblet - Few Known
- _____ 232. **P - Beaded Shell Mug - Multi Electric**
- _____ 233. Light A - Beaded Shell Mug
- _____ 234. **B - Orange Tree, 2-1/2", Base Mug - Flared**
- _____ 235. M - Orange Tree, 3", Base Shaving Mug
- _____ 236. **Radium Pumpkin - Jacobean, 5-1/2" Tall, Cologne Bottle - Extremely Pretty**
- _____ 237. G - Imp. Grape Wine Decanter - Base Glows
- _____ 238. **Rare Smoke - Imp. Grape Wine Decanter**
- _____ 239. Pastel M - Imp. Grape Wine Decanter - Shimmering Irid. - Really Nice Item
- _____ 240. **P - Fabulous, Imp. Grape Decanter - Dripping w/Irid.**
- _____ 241. Scarce M - Rare, Band of Stars, 14-1/2" Tall Decanter
- _____ 242. **P - Dugan, 10-1/4", JIP, Twisted, Thin Panels Vase - Extraordinary - Rare Size**
- _____ 243. Lav. - Dugan, Stippled Estate Vase
- _____ 244. **Light Pastel Clambroth? - Dugan Estate Vase**
- _____ 245. PO - Dugan, Tri Cornered, Pinched Swirl, 4", Squatty Vase
- _____ 246. **White Opal - 6", Squatty, Lined Lattice Vase - Marigold Spray Interior Only**
- _____ 247. M - Old Dugan 2 Handled Mary Ann Vase
- _____ 248. **Elec. P - Dugan 2 Handled Mary Ann Vase - Outstanding Example**
- _____ 249. Rich M - Dugan, 9-1/4", Big Basketweave Vase
- _____ 250. **Radium Lav. - 9-1/2" Dugan Big Basketweave Vase - Spectacular**
- _____ 251. Radium B - Dugan 10" Big Basketweave Vase - WOW!
- _____ 252. **Lav. Smoke - Dugan 9-1/2" Big Basketweave Vase - Honey Amber Irid.**
- _____ 253. Dk. P - 10-1/4" Dugan Big Basketweave Vase
- _____ 254. **Fantastic W Frosty - 10-1/2" Big Basketweave Vase**
- _____ 255. Dk. A - Whimsey Lattice, Stork in Rushes Hat, from Tumbler - Fantastic Item
- _____ 256. **Scarce A - Fenton Vintage Grape Fernery Bowl**
- _____ 257. M - Fenton Vintage Grape Fernery Bowl - Radium
- _____ 258. **Bl. A - 5-1/2" Ruffled, 2 Row, O.E. Basket - Seldom Seen**
- _____ 259. Radium B - Fenton, Vintage Grape Fernery Bowl
- _____ 260. **PO - Collar Base, 8-3/4", Ruffled Dragon/Lotus Bowl - Impressive Treasure**
- _____ 261. B - Fenton, Ruffled Holly Hat
- _____ 262. **Beautiful Amber - Collar Base, 8-3/4", Ruffled Dragon/Lotus Bowl - Seldom Seen**
- _____ 263. M - Fenton Stream of Hearts Ruffled Compote
- _____ 263a. W Frosty - Fenton, 9", 6 Ruffled Peacock/Urn Bowl
- _____ 264. **W - 9-1/2" Fenton Peacock/Urn Plate - Pretty Blue Irid.**
- _____ 265. Dk. A - Fenton, 8-1/2", ICS Peacock/Urn Bowl - Rare Shape/Color
- _____ 266. **W - 9-3/4", Fenton Holly Plate - Fantastic Stretch - Frosty - One of the Best**
- _____ 267. M - Fenton, 9", 8 Ruffle Peacock/Urn Bowl - Extra Nice
- _____ 268. **Dk. Radium M - 10" Fenton Holly Plate - Scarce Size - Beautiful Effect of Irid.**
- _____ 269. Dk. B - Fenton, 8-3/4", ICS Holly Bowl - Nifty
- _____ 270. **B - 9-1/4" Captive Rose Plate - Nice Find**
- _____ 271. Clambroth - 9-1/2" Leaf Chain Plate - Very Undervalued Color
- _____ 272. **Clambroth - 9-1/2" Orange Tree Plate - Another Bargain**
- _____ 273. Scarce M - Collar Base, 9", Sq., 8 Ruffled Chrysanthemum/Windmill Bowl



- _____ 274. **M - Dugan, Rnd., Puzzle Compote - Incredible Irid. - Great Example**
- _____ 275. M - Sowerby, Curved Star, Stemmed Open Sugar Bowl
- _____ 276. **Dk. B - N Fruits/Flowers, Ftd., Bonbon - Wonderful**
- _____ 277. Radium M - N Paneled Holly Bonbon - Under Rated
- _____ 278. **P - 8-3/4" Ruffled, N, Nippon Bowl - BW Exterior - Impressive Pattern**
- _____ 279. Beautiful M - N Nippon Bowl - BW Exterior
- _____ 280. **Scarce P - N Butterfly Bonbon w/Threaded Exterior - Hard to Find**
- _____ 281. Beautiful B - N Butterfly Bonbon - Smooth Ext.
- _____ 282. **Exquisite M - Collar Base, Stippled, 3 Fruits Ruffled Bowl - Top Shelf Piece**
- _____ 283. M - 9-1/4", N, Stippled, 3 Fruits Rib Back Plate
- _____ 284. **B - 9-1/4", N, Stippled, 3 Fruits, Rib Back Plate**
- _____ 285. G - N Fruits/Flowers Ftd. Bonbon - Dye Run in Glass
- _____ 286. **Dk. M - N, 9-1/4", 3 Fruits Plate - BW Exterior - Extra Nice Example**
- _____ 287. P - N, PCE, 3 Fruits Bowl - BW Exterior - Lots of Irid. - Nice Upgrade
- _____ 288. **M - N, 9-3/4", ICS Master Peacock/Urn Bowl - Magnificent - Loaded w/Blues & Pinks**
- _____ 289. Fantastic IB - N, 5-1/2", ICS Peacock/Urn Berry Bowl
- _____ 290. **M - N, 5-1/2", ICS Peacock/Urn Berry Bowl - Loaded w/Irid**
- _____ 291. Elec. P - N, 5-1/2", ICS Peacock/Urn Berry Bowl - Loaded w/Irid
- _____ 292. **Dk. B - N, 5-1/4", ICS Peacock/Urn Berry Bowl - Loaded w/Irid.**
- _____ 293. W - N, 5-3/4", ICS Grape/Cable Bowl - BW Exterior - Elegant Find
- _____ 294. **Scarce A - Orange Tree Powder Jar w/Lid - WOW**
- _____ 295. M - Orange Tree Powder Jar w/Lid - The Best
- _____ 296. **B - Orange Tree Powder Jar w/Lid**
- _____ 297. Beautiful M - Dugan, Vintage Grape Powder Jar w/Lid
- _____ 298. **Outst. M - Inverted Strawberry Powder Jar w/Lid**
- _____ 299. P - N Grape/Cable Powder Jar w/Lid - Old Favorite
- _____ 300. **Frosty W - N, 8-3/4", Ruffled Poppy Show Bowl**
- _____ 301. M - N Peacock/Fountain, Ftd., Fruit Bowl - Another Favorite
- _____ 302. **Deep P - N Ftd. Peacock/Fountain, Lge., Fruit Bowl**
- _____ 303. Outstanding G - Persian Medallion, Ftd. (Grape/Cable Exterior) Fruit Bowl
- _____ 304. **Rare Dk. B - Dugan, Lge., Ftd., Grape Arbor Fruit Bowl (Inverted Fan/Feather Ext.)**
- _____ 305. Extra Nice G - Ruffled, N, Good Luck Bowl - BW Ext. - Way Above Average
- _____ 305a. Light M - Ruffled, N, Good Luck Bowl - BW Ext.
- _____ 306. **Blue - PCE, N, Good Luck Bowl - WOW! - Multi Elec. Beauty**
- _____ 307. Scarce G - N, Ftd., Wishbone Bowl - 8 Ruffles
- _____ 308. **Extra Nice A - N, 8-1/2" Ftd. Wishbone Plate**
- _____ 309. Hard to Find G - N, Ruffled Peacock Bowl - Rib Ext. - Nicks Between Points - Still Very Nice
- _____ 310. **Elec. B - 9-1/4", N Peacocks Plate, Rib Ext. - Magnificent - Great One**
- _____ 311. P - 9", N Peacocks Plate, Rib Ext. - Always Desired
- _____ 312. **Rare G - 9", N Peacocks Plate, Rib Ext. - Emerald Highlights - A Keeper**
- _____ 313. Ice G - 9", N Peacocks Plate
- _____ 314. **Ice B - N, Ruffled Hearts/Flowers Bowl - Pastels are Hot**
- _____ 315. Ice B - N, Ruffled Embroidered Mums Bowl - Rib Ext.
- _____ 316. **Lav. - N, 11" Diamond Points Vase - A Dandy**
- _____ 317. P - N, 10-3/4" Diamond Points Vase - Multi Elec.
- _____ 318. **G - N, 10-3/4" Diamond Points Vase - Loaded with Irid. - Alaskan Effect**
- _____ 319. Scarce W - N, 9-3/4" Diamond Points Vase
- _____ 320. **Pretty B - 10-1/2", N Diamond Points Base**
- _____ 321. W - N, 10-1/2" Leaf Columns Vase - Radium Pastel Irid. - Real Nice One
- _____ 322. **Radium G - 10-3/4" Leaf Columns Vase - Scarce**
- _____ 323. P - 10-1/4", N, Leaf Columns Vase - Radium Multi Elec.
- _____ 324. **Scarce AO - N Daisy/Drape, Ftd., Vase - Flared Opening**
- _____ 325. Frosty W - N Daisy/Drape, Ftd., Vase - Turned In
- _____ 326. **Rare B - N Daisy/Drape, Ftd., Vase - Flared Opening**
- _____ 327. White MLKG - Flared Out, Painted Daisy/Drape Vase - Non Irid. - Rare to Find
- _____ 328. **Scarce M - N Daisy/Drape Vase - Turned In**
- _____ 329. Rare P - N Daisy/Drape Vase - Turned In
- _____ 330. **P - 10-1/2" April Showers Vase, Peacock Tail Interior**
- _____ 331. G - 10-3/4" April Showers Vase - Plain Int.
- _____ 332. **Dk. B - 7-1/4" Paneled Diamond/Bows Vase - Impressive Example**
- _____ 333. Pretty G - 10-1/2" Diamond/Rib Vase
- _____ 334. **P - Imp. Grape Carafe - Outstanding, Electric**
- _____ 335. Light M - Thistle, 6" Vase - Caning Town Glass Works Ltd.
- _____ 336. **Crystal Lav. Tint - 10-1/2" Ripple Vase - Light M. Irid - Totally Different**
- _____ 337. M - Ftd., Lge. Orange Tree Fruit or Orange Bowl
- _____ 338. **Rich M - Ftd., 10", Persian Medallion Fruit Bowl - Grape/Cable Ext.**
- _____ 339. Clambroth - Radium, 9", Frosted Block Plate - Vibrant Irid.
- _____ 340. **Pump. M - 9-1/2" Fenton Holly Plate**
- _____ 341. Shimmering Radium M - 9-1/2" Scroll Embossed Plate - Just Super Pretty
- _____ 342. **M - 5-1/2" Tall, Rib Interior, Stemmed Wine - ?**
- _____ 343. M - 4-1/4" Tall, Rib Interior, Stemmed Cordial - ?
- _____ 344. **M - Star/File, 4" Tall, Stemmed Wine - ?**
- _____ 345. Smoke - 5-1/4" Tulip/Cane Ruffled Little Bowl - Base Nick
- _____ 346. **Radium Pump. M - Imp. Hobstar Flower Compote**
- _____ 347. M - Collar Base, Ruffled Horse Medallion Bowl
- _____ 348. **M - Flute Covered Candy Dish**
- _____ 349. M - Imp. OMEGA Rosebowl
- _____ 350. **Rare A - 4-3/8" Kittens Plate**
- _____ 351. W - Rolled Rim Bowl w/Polished Pontil on Bottom
- _____ 352. **M - Perfume Bottle w/Stopper**
- _____ 353. M - Flask Shaped Sm. Bottle w/Stopper
- _____ 354. **M Flashed - Hobnail, 6" Tall, Cologne w/Stopper**
- _____ 355. M - Fenton Holly, 9", Ruffled Bowl

- ___ 356. Great B - 10" Ball Ftd., 2 Flowers Ruffled Fruit Bowl
- ___ 357. A - N, 9", Ruffled Stippled Rays Bowl
- ___ 358. B - Fenton, 8 Ruffle Peacock/Urn Bowl - Rim Roughness
- ___ 359. A - Dugan, 9" Ruffled Heart/Vine Bowl
- ___ 360. A - 8-3/4" Fenton Autumn Acorns Bowl
- ___ 361. M - Imp., 9", Ruffled, Scroll Embossed Bowl - File Exterior
- ___ 362. Teal - 7-1/4" Ruffled Coin Dot Bowl
- ___ 363. B - 6" Ruffled Persian Medallion Bowl
- ___ 364. Lav. - 10", Ruffled Little Flowers Bowl - Smooth Edge
- ___ 365. G - Fenton, 6", ICS Stippled Rays Bowl
- ___ 366. A - Fenton, Stippled Rays Bonbon
- ___ 367. B - Fenton, Blkb. Spray Ruffled Compote
- ___ 368. M - Fenton, 8", Ruffled Ball Ftd. Grape/Cable Bowl
- ___ 369. G - 6-1/2" Fenton, Rnd. Vintage Grape Bowl
- ___ 370. M - Fenton, 6", Ruffled, Ftd. Waterlily Bowl
- ___ 371. M - Dugan, 8" Ruffled Cherries, Ftd. Bowl
- ___ 372. A - Dugan, 8" Ruffled Cherries, Ftd. Bowl
- ___ 373. M - Dugan Question Mark, Ftd. Compote
- ___ 374. PO - Beaded Panels, 6-1/2", Tri Cornered, CRE Compote - Scarce Pattern
- ___ 375. Dk. M - 10" Dugan Cosmos (Vt.) Ruffled Bowl
- ___ 376. Scarce M - Dugan, 8-3/4", ICS Cosmos (Vt.) Bowl
- ___ 377. M - Dugan, 10 Ruffle, Double Stemmed Roses Bowl
- ___ 378. G - N Ruffled Beads Bowl - 8-1/2"
- ___ 379. M - Tree of Life Stemmed Sherbet
- ___ 380. Pump. M - 9", Ftd., Prism Panels Vase - Toe Chip
- ___ 381. P - Strutting Peacock Creamer (No Lid) - w/Chip
- ___ 382. Amberina Frosted - Daisy/Button Pickle Castor w/Frame, Signed Crider (Rare)

- ___ 383. Contemporary Red - 6-1/4" Moon/Star Trumpet Vase (Robert Hansen) - Very Desirable
- ___ 384. Contemporary B - Robert Hanson Frog Paper Weight
- ___ 385. Contemporary Red - Daisy/Button, Robert Hansen Toothpick Holder
- ___ 386. Contemporary B - Swag w/Bracket, Robert Hansen Toothpick Holder
- ___ 387. Contemporary B - Gypsy Pot, Robert Hansen Toothpick Holder
- ___ 388. Contemporary G - Michigan, Robert Hansen Toothpick Holder
- ___ 389. Contemporary Aqua G - Panel, Galloway, Robert Hansen Toothpick Holder
- ___ 390. Contemporary B - Vermont, Ftd., Robert Hansen Toothpick Holder
- ___ 391. Red - Fenton, Quartz Table Clock - 6" W x 4-1/2" Tall - Contemporary
- ___ 392. B - 1984, ICGA Lions Rose Bowl - Souvenir - Contemporary
- ___ 393. Ice B - 8" Cupids Plate - Contemporary - Signed w/✓
- ___ 394. Amber Crystal - 8-1/2", Ftd. Fantail Bowl - Age?? - Still Neat Item

SPECIAL NOTE:

NO SUNDAY CALLS, PLEASE!
 Winning Absentee Bidders will be contacted Monday through Wednesday of the week following the Auction!
 Thank You!

SEND ALL MAIL TO:

**18350 Hunters Ridge Ct.
 Boonville, MO 65233**

BOOKING NOW FOR 2006

NEED QUALITY CARNIVAL GLASS & ANTIQUES
 Call or E-mail today to place your auction.
 (Successful Auctions need lots of planning.)
 Thanks, Mic

👉 AUCTION CALENDAR OF EVENTS

Saturday, March 11, 2006 @ 9:00 a.m.

Annual Cabin Fever Antique Auction
 Stoneware Collection, 40 Beater Advertising Jars, Furniture, Fine China, Glass, Advertising, Clocks, THE WORKS - Watch the Web Site for Updates.

Saturday, April 8, 2006 @ 9:00 a.m.

W.W.W.C.G. Convention
 Held in St. Louis, MO at the Crown Plaza Hotel
 You won't want to miss this Carnival Glass Auction.

Saturday, June 10, 2006 @ 9:00 a.m.

Carnival Glass Collection in Boonville, MO
 Lifetime Collection (400 pcs.) of
Wilfred and Judy Schutz of Nebraska
 Advance Collection - Very Select Items

Saturday, August 19, 2006 @ 9:00 a.m.

Carnival Glass Collection in Boonville, MO
 Lifetime Collection (700 pcs.) of
Winnie Brim of Kansas

**Friday, October 13 and
 Saturday October 14, 2006**

The 25th Air Capital Carnival Glass Convention - Held in Wichita, Kansas

WATCH: 👉 Web Site: www.AWK.SHN.com

www.AWK-SHN.com
MICKEY REICHEL
ANTIQUE & AUCTION, L.C.
18350 HUNTERS RIDGE CT.
BOONVILLE, MO 65233

PRESORTED
FIRST CLASS MAIL
US POSTAGE PAID
SEDALIA, MO
PERMIT 217

RETURN SERVICE REQUESTED

FIRST CLASS MAIL
SPECIAL INVITATION TO:



*****MIXED AADC 650

LEE MARKLEY

PO BOX 306

MENTONE IN 46539-0306

