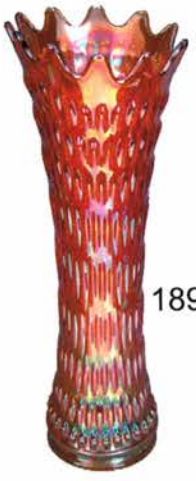




188



189

# *Remmen Auction*

is proud to present the

## 2006

# Tampa Bay Carnival Glass Club

# Convention Auction

Saturday, February 4th, 2006

Auction starts at 9:30 am

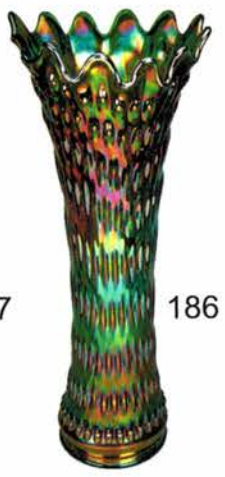
Preview on Friday, February 3rd from 6:00 to 9:00 pm  
and on Saturday, February 4th from 8:00 to 9:30 am

**Best Western Waterfront**

300 West Retta Esplanade, Punta Gorda, Florida 33950  
Phone: 941-639-1165 • Fax: 941-639-8116



187



186



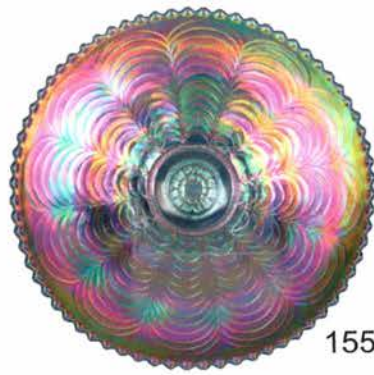
164



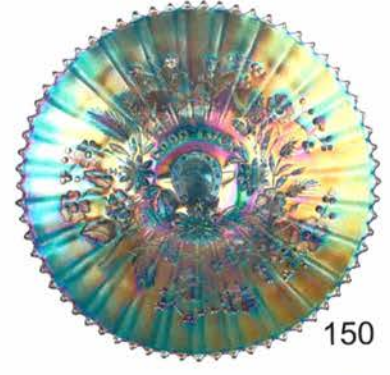
10



54



155



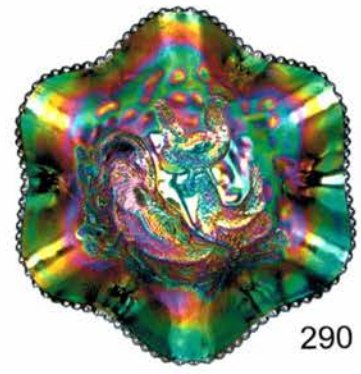
150



87



145



290



226

# 2006 Tampa Bay Carnival Glass Club Convention Auction

Come on down to Florida and join us in Punta Gorda Florida February 4<sup>th</sup> 2006 for the Tampa Bay Carnival Glass Jamboree auction. The Tampa Bay Club has a wonderful itinerary planned for all that are coming including a boat cruise, open house and educational seminars. Room rate at the Best Western Waterfront will be \$119.00 per night (plus tax). You must make your reservations by **January 15th 2006** to ensure this room rate and be sure to mention the Tampa Bay Carnival Glass convention. For those who cannot attend, absentee and live phone bidding gladly accepted. You may contact Remmen Auction at 503-256-1226 or 503-756-2629 or just use the absentee bid form located on our website. **Public Welcome.**

## Absentee Bid Policy

Absentee bids will be gladly accepted by either placing bids through our website or contacting us at our office: (503) 256-1226 or cell phone: (503) 756-2629. **The deadline for all absentee bids will be Thursday February 2<sup>nd</sup> 2006, 6:00 pm PST.** A Credit Card may be required for submitting absentee or live phone- bids if not known by Remmen Auction. By submitting an absentee/ phone bid you are entering a contractual agreement with Remmen Auction Service and will take full responsibility to honor any/ or all bids we may execute for you. Items are bid on in excellent condition without damage OR as described in our brochures. We will always do our best to describe each item as accurately as possible. All of the items in this auction are photographed and you may view each item on our website. Our photos are extremely accurate, so please use your own judgment concerning color and iridescence when placing an absentee bid through our site. We will not accept frivolous returns. Your absentee bid will be entered just as if you are present at the auction and bidding yourself. Bids will not be executed if damage to any item is found during the auction that has not been described in brochure. A \$7.50 handling charge for each successful absentee bid will be added to the selling price. The auctioneer will notify successful bidders within 1-7 days after the auction. Payment in full, plus estimated postage, insurance, and handling are required within 10 days of notification and before any item is shipped or delivered to buyer. Due to travel time for this auction, please allow up to 4 weeks for delivery of your items. In the event of a tie bid, bidders in attendance will have precedence over an absentee bid. In the event of a tie bid between absentee bidders, the earliest bid received will have precedence. Remmen Auction offers absentee/phone bidding as a convenience to our customers and will not be held responsible for errors or failure to execute bids.

## Live Phone Bidding

Live phone bidding will be accepted at this auction. Due to limited phone space, please be sure to submit your phone bid request early. We will only accept Live Phone Bidding on items with an estimated value of \$500.00 and over.

## Terms and Conditions of Sale

Cash, Pre-approved Check, Visa, MasterCard, Discover Card, and American Express are accepted. A 4% Buyer's Premium will apply to all purchases with the exception of Cash or Check. All items must be paid for before they leave the premises. All statements made the day of sale will take precedence over any and all printed material. All items are being sold without guarantee or warranty implied, regardless of statements made by auctioneers or staff. Auction Company is not responsible for any accidents, thefts, breakage, or sold items. Remmen Auction reserves the right to withdraw any property at any time before and during the actual sale. All sales are final once the item leaves the auction location.

**Please visit our website for complete listing and photos of all items to be sold!**

**[www.remmenauction.com](http://www.remmenauction.com)**

**Debra Jo Remmen**

Auctioneer

Phone: (503) 256-1226

Cell Phone: (503) 756-2629

e-mail: [debra@remmenauction.com](mailto:debra@remmenauction.com)

**Kris K. Remmen**

Auctioneer/Auction Manager

Phone: (503) 256-6931

Cell Phone: (503) 757-5327

e-mail: [kris@remmenauction.com](mailto:kris@remmenauction.com)



Members of: National Auctioneers Association  
Oregon Auctioneers Association  
Certified Appraisers Guild of America

Graduate of Missouri Auction School  
Graduate of Mendenhall School of Auctioneering  
Licensed Auctioneer in the State of Florida #AU2640  
Licensed Auctioneer in the State of Ohio



- 1 Northwood Purple Thin Rib Vase. 8 1/2" tall
- 2 Imperial Amber Imperial Grape Decanter w/o Stopper. Rare Color, very few known
- 3 Northwood Blue Grape & Gothic Arches Master ICS Bowl. Electric iridescence
- 4 Fenton Marigold Horse Head Medallion Rosebowl.
- 5 Fenton Pastel Marigold Horse Head Medallion Footed ICS 7 1/2" Bowl.
- 6 Northwood Ice Blue Grape & Cable Punch Cup & Ice Blue Peacock at the Fountain Punch Cup. (Sold Choice)
- 7 **Rare Northwood Electric Blue Acorn Burrs Punch Cup.** If you have the punch set this is for you!
- 8 **Northwood Dark Marigold Acorn Burrs 6 pc. Table Set.** Beautiful set. Well matched
- 9 **Northwood Black Amethyst Poppy Pickle Dish.** Originally from John Britt's collection. Very nice iridescence and it is black amethyst!
- 10 **Northwood Electric Purple Oriental Poppy Tankard. Spectacular radium iridescence has to be the best!** Sold with one tumbler
- 11 Northwood Lime/ Ice Green Grape & Cable Fruit Bowl. Beautiful, but missing one flute
- 12 **Northwood Dark Marigold Grape & Cable 7 pc. Tankard Water Set.** Super set and well matched
- 13 **Fenton Dark Marigold Wreath of Roses Punch Bowl & Base.** Dark & Beautiful with super iridescence. Has Persian Medallion interior.
- 14 **Fenton Amethyst Wreath of Roses Punch Set.** Includes Six Matching Cups. Has Persian Medallion Interior. Lovely
- 15 Imperial Smokey Lavender Hobstar Flower Compote. Very pretty and a unique color
- 16 Northwood Marigold Peacock at the Fountain Compote.
- 17 **Northwood Ice Green Peacock at the Fountain Compote.** Very nice, originally from the Bob Gallo collection
- 18 **Scarce Fenton Aqua Opal Blackberry Hat.** Very scarce & pretty with great iridescence
- 19 **Fenton Marigold Stag & Holly Spatula Footed Plate.** Nice and pretty
- 20 **Fenton Electric Blue Stag & Holly ICS Bowl.** Beautiful radium finish
- 21 Millersburg Marigold Hobnail Swirl Spittoon.
- 22 Millersburg Marigold Hobnail Rosebowl.
- 23 Millersburg Amethyst Leaf & Little Flowers Round Compote. Radium Finish
- 24 Millersburg Marigold Radium Strawberry Wreath 6 1/4" Sauce.
- 25 Millersburg Green Strawberry Wreath 10" Bowl. Radium iridescence
- 26 Green Millersburg Boutonniere Compote.
- 27 **Millersburg Blue Blackberry Wreath Large ICS Bowl.** Rare Bowl
- 28 **Fenton Blue Holly 3/1 Edge Bowl.** Super nice
- 29 **Fenton Green Holly Ruffled Bowl.** Fantastic Iridescence
- 30 **Fenton Red Holly Ruffled Bowl.** Looks red and is pretty
- 31 **Fenton Marigold Holly Plate.** Super color with beautiful stretch effect.
- 32 **Fenton Smokey Blue Holly Plate.** Neat Color and Pretty
- 33 Northwood Pearlized Custard Grape & Cable Banana Boat. Scarce
- 34 Northwood Pearlized Custard Grape & Cable Turned in Centerpiece Bowl.
- 35 **Northwood Blue Grape & Cable Centerpiece Bowl.** Electric highlights. Small burst bubble on grape
- 36 Australian Dark Marigold Kingfisher #2 Ruffled 5 1/2" Sauce.
- 37 Australian Electric Amethyst Kingfisher 5" Saucel.
- 38 **Australian Black Amethyst Kookaburra 5 1/2" Bowl.** Outstanding
- 39 Australian Black Amethyst Kangaroo 5 1/2" Sauce.
- 40 Australian Electric Amethyst Thunderbird 9 3/4" Bowl.
- 41 **Australian Electric Amethyst Swan 9 1/4" Bowl. Electric**
- 42 Australian Black Amethyst Gum Tips 9 1/4" Vase.
- 43 Fenton Pastel Marigold Leaf Chain 9 1/4" Plate.
- 44 Fenton Green Leaf Chain 9 1/4" Plate. Very light silvery iridescence
- 45 **Fenton Amethyst 9" Leaf Chain Plate.** Very Rare, Only a handful known and really nice
- 46 Northwood Blue Opal Hearts & Flowers Compote. Non-iridized
- 47 Northwood Marigold Hearts & Flowers Compote. Has very nice iridescence
- 48 Northwood Ice Blue Hearts & Flowers Compote.
- 49 Northwood Electric Blue Hearts & Flowers Compote. Small burn spots on edge
- 50 Northwood Marigold Hearts & Flowers Ruffled Bowl.
- 51 **Northwood Electric Purple Hearts & Flowers Ruffled Bowl.** Super iridescence & even color
- 52 Imperial Marigold Diamond & Starburst 7 pc Decanter Set. Nice and dark marigold
- 53 **Imperial Electric Purple Diamond & Starburst 7pc. Decanter Set.** WOW! Super Matching set
- 54 **Incredible Imperial Electric Purple Chrysanthemum Chop Plate.** Spectacular stretch effect from edge to edge. Signed Nuart
- 55 Northwood Black Amethyst Round Bushel Basket. Non-iridized
- 56 Northwood Marigold Round Bushel Basket. Nice dark marigold
- 57 **Northwood Green Round Bushel Basket.** Really nice
- 58 **Northwood Purple Round Bushel Basket.** Super
- 59 **Northwood Blue Round Bushel Basket.** Super
- 60 **Northwood Horehound Round Bushel Basket.** Gorgeous and scarce
- 61 Northwood Aqua Opal Round Bushel Basket. Great with nice pastel iridescence
- 62 **Northwood Green Octagonal Bushel Basket.** Pretty with blue iridescence
- 63 Millersburg Green Feather & Heart Water Pitcher.
- 64 Millersburg Amethyst Diamonds Water Pitcher with One Tumbler.
- 65 Northwood Purple Singing Birds Water Pitcher and One Tumbler.

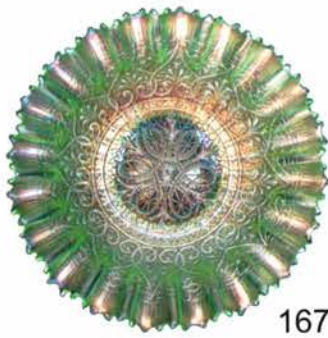




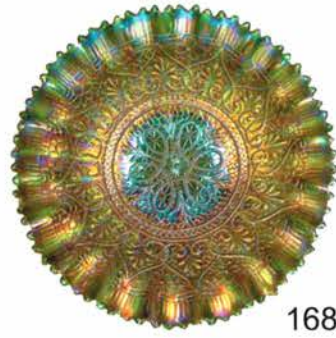
170



169



167



168



194



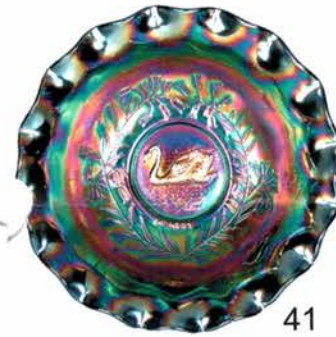
142



196



198



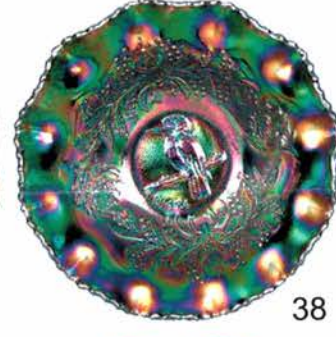
41



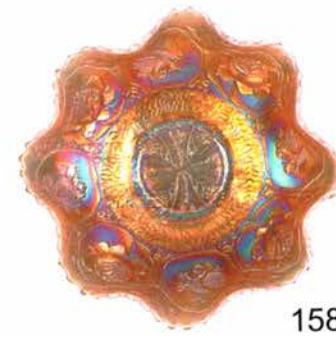
37



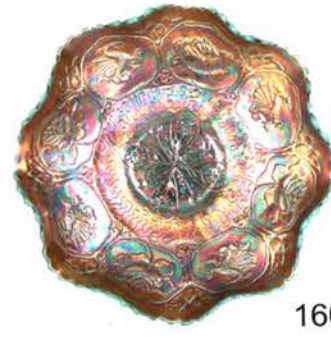
36



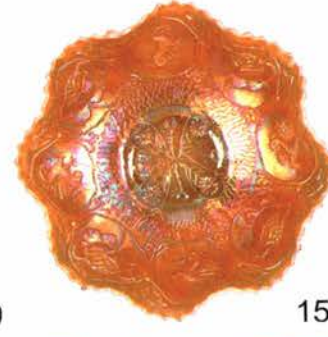
38



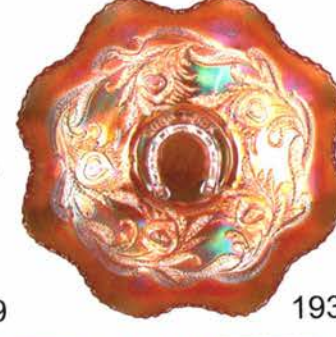
158



160



159



193



277



271



279



276



269C



274

Please visit our website for a complete listing and photos of every item in the auction at:

[www.remmenauction.com](http://www.remmenauction.com)

- 825 66 **Northwood Dark Marigold Acorn Burrs 7 pc. Water Set.** Dark and Beautiful
- 775 67 **Fenton Blue Fentonia 7 pc. Water Set.** Very pretty set
- 1100 68 **Northwood Ice Blue Poppy Show Plate.** Multi color iridescence
- 1800 69 **Northwood Ice Green Poppy Show Plate.** Another nice plate
- 1300 70 **Northwood Blue Poppy Show Plate.** Pretty with electric highlights
- 1200 71 **Northwood Green Poppy Show Plate.** Small flake or peeling on petal of poppy
- 1200 72 **Northwood Ice Green Poppy Show Ruffled Bowl.** Pretty pastel
- 73 **Northwood Electric Blue Wishbone Ruffled Footed Bowl.** Really nice
- 74 Northwood White Wishbone Footed Bowl. Frosty and pastel
- 75 **Fenton Lime Green Opal Strawberry Bon Bon.** Lots of opal and very pretty
- 76 **Northwood Sapphire Opal Drapery Rose Bowl.** Has definite Sapphire base glass
- 77 Northwood Blue Leaf & Beads Rose Bowl. Electric highlights
- 78 Northwood Pearlized Custard Leaf & Beads Rose Bowl. Has nutmeg stain
- 79 Northwood Aqua Opal Leaf & Beads Rose Bowl.
- 80 **Northwood Ice Blue Leaf & Beads Rose Bowl.** Beautiful pastel iridescence
- 81 **Imperial Marigold on Moonstone Smooth Panels Vase.** Super color inside and out. 8 1/2" tall, 6 1/2" opening and 3 1/2" base
- 82 **Northwood Blue Daisy & Drape 8" Vase.** Nice Example
- 83 Northwood Black Amethyst Corn Vase.
- 84 **Northwood Purple Town Pump.** Very nice
- 85 Imperial Marigold Loganberry Vase.
- 86 Imperial Amber Loganberry Vase. Nice Iridescence
- 87 **Extremely Rare Amber Imperial Poppy Show Vase.** Only a handful known, Great color inside and out. Professional repair on base. It will be hard to find another one
- 88 Northwood Blue Embroidered Mums Ruffled Bowl. Nice bowl
- 89 **Northwood Lavender Embroidered Mums Ruffled Bowl.** Super Piece with great color
- 90 **Super Northwood Lime Green Embroidered Mums Plate.** Covered with pastel blue Iridescence. Spectacular example
- 91 Northwood Marigold Peacocks Plate with Ribbed Back. Pretty
- 92 Northwood Ice Green Peacocks Plate with Ribbed Back. Very pretty
- 93 **Northwood Green Peacocks Plate.** Super Nice example
- 94 **Northwood Lavender Peacocks Ribbed Back Plate.** One of the best
- 95 **Northwood Electric Blue Peacocks Plate.** Awesome
- 96 **Northwood Horehound Peacocks Plate.** Looks horehound and is super
- 97 **Northwood Pastel Marigold Stippled Peacocks Plate.** Covered with Pinks and Blues
- 98 **Northwood Electric Blue Stippled Peacocks Plate.**
- 99 Northwood Ice Green Peacock at Urn Sauce. Pretty and pastel
- 800 100 **Northwood Gingerale/Clambroth Stippled Peacock at Urn ICS Master Bowl.** Has Super Iridescence and a unique color
- 750 101 **Northwood Purple Peacock at Urn Chop Plate.** Electric highlights
- 102 Northwood Marigold Drapery Footed Variant 8 1/2" Vase. Beautiful dark marigold with good feet
- 103 **Northwood Blue Drapery Variant 8" Vase.** Electric highlights
- 104 Northwood Blue Opal Drapery 8" Vase.
- 105 Northwood Marigold Drapery 6 1/2" Vase. Nice and squatty with color from top to bottom
- 106 **Northwood White Drapery 6 1/2" Vase.** Beautiful radium iridescence
- 107 **Northwood Green Squatty Leaf Columns Vase.** 6 3/4" tall. Has emerald green highlights
- 108 Northwood Purple Leaf Columns Vase. 9 1/2" tall
- 800 109 **Millersburg Marigold Bullseye & Loop Swung Vase.** 11 3/4" tall. Rare swung
- 350 110 **Millersburg Green Tulip Scroll Swung Vase.** 11 3/4" tall. Rare swung
- 111 Northwood Blue Opal Tree Trunk 9 1/2" Vase.
- 112 Northwood Green Squatty Tree Trunk Vase. 6 1/4" tall.
- 113 Northwood Green Midsize Tree Trunk Vase. Very pretty
- 850 114 **Northwood Aqua Opal Tree Trunk 11" Vase.** Lots of opal
- 115 Northwood Ice Green Thin Rib 11 3/4" Vase. Radium finish with light pastel iridescence
- 116 **Northwood Marigold Rose Show Plate.** Really nice. Has sliver on rose that is hard to find
- 1200 117 **Northwood Electric Purple Rose Show Plate.** Absolutely the best
- 900 118 **Northwood Electric Blue Rose Show Plate.** Super plate
- 2200 119 **Northwood Aqua Opal Rose Show Ruffled Bowl.** Fantastic, This is what they are suppose to look like
- 120 Imperial Pastel Marigold Open Rose Plate. Dark and pretty
- 800 121 **Imperial Electric Purple Open Rose Plate.** Color from edge to edge. Manufacturer peeling and flake on one rose
- 1600 122 **Imperial Red Lustre Rose Fruit Bowl.** Looks red with great iridescence \*
- 123 Imperial Electric Purple Imperial Grape Water Carafe.
- 900 124 **Fenton Amethyst Geo. W. Getts Pianos 6" Ruffled Bowl.** A Very Nice Example
- 1600 125 **Fenton Utah Liquor Co. Advertising Plate.** A Very Nice Example
- 1600 126 **Fenton Blue 1911 Atlantic City Elks ICS Bowl.** Has nice highlights
- 4600 127 **Rare & Beautiful Millersburg Amethyst Two Eyed Elk Ruffled Bowl.** Has Radium Iridescence with great color. Scarce piece
- 1950 128 **Northwood Green Acorn Burrs Punch Set with Six Cups.** Has very nice iridescence
- 2500 129 **Northwood Blue Grape & Cable Midsize Punch Set with Six Stippled Cups.** Pretty darn hard to find. Has electric highlights

- 130 **Northwood Green Memphis Fruit Bowl & Base with Six Cups.** Nice multi-color iridescence 2600
- 131 **Northwood Aqua Opal Stippled Three Fruits Spatula Footed Bowl.** Wonderful pastel iridescence
- 132 **Northwood Lime Green Opal Stippled Three Fruits Spatula Footed Bowl.** Very rare & pretty
- 133 **Northwood Green Stippled Three Fruits Bowl with Collar Base.** Very scarce bowl, tough to find with collar base 1625
- 134 **Rare Northwood Pearlized Custard Stippled Three Fruits Ruffled Bowl with Ribbed Back.** Very scarce
- 135 **Northwood Electric Purple Stippled Three Fruits Ruffled Bowl.**
- 136 **Northwood Aqua Opal Stippled Three Fruits Ruffled Bowl with Collar base.** Great piece with lots of color 3000
- 137 **Northwood Lime/ Ice Green Stippled Three Fruits Ruffled Bowl with Collar Base and Ribbed Back.** Nice pastel iridescence 2000 1100
- 138 **Northwood Ice Blue Stippled Three Fruits Bowl with Collar Base and Ribbed Back.** Rare and Beautiful 1400
- 139 **Millersburg Green Peacocks Large ICS Bowl.**
- 140 **Millersburg Amethyst Multi Fruits & Flowers Punch Set with Seven Cups.** Super set 1800
- 141 **Millersburg Green Holly Whirl 10" Bowl.** Has satin finish with blue iridescence
- 142 **Millersburg Amethyst Fleur de Lis Large ICS Bowl.** Very open, Super multi-color iridescence 1800
- 143 **Millersburg Amethyst Rosalind Master ICS Bowl.**
- 144 **Millersburg Marigold Zig Zag Tri-corner Crimped Edge Bowl.** Beautiful radium iridescence
- 145 **Extremely Rare Millersburg Vaseline Many Stars Crimped Edge.** Only one of two known in this pattern. Very Strong Glow. No question about this one! 2250
- 146 **Northwood Pastel Marigold Stippled Good Luck Plate.** Beautiful 650
- 147 **Northwood Electric Blue Good Luck Plate.** Another beauty 1300
- 148 **Northwood Pastel Marigold Good Luck Plate.** Great plate 1100
- 149 **Northwood Green Good Luck Plate.** Super 650
- 150 **Rare and Beautiful Northwood Ice Blue Good Luck Ribbed Back Plate.** Only a few Known. Extremely tiny manufacture defect on cleat of horse shoe. Who Cares! 750
- 151 **Fenton Green Open Edge JIP Basket.** Hard to find, has super color. Small checks in webbing 1100
- 152 **Fenton Red Open Edge JIP Basket.** Looks red 1425
- 153 **Northwood Marigold Nippon PCE Bowl.** Pretty
- 154 **Northwood Electric Purple Nippon Ruffled Bowl.** Nice bowl
- 155 **Spectacular Northwood White Nippon Plate with Plain Exterior.** Only one we know of that is perfect with plain exterior. Iridescence is radium and un-believable! 800
- 156 **Aurora Pearls Decorated Brides Bowl.** Does not have frame
- 157 **Aurora Pearls Bowl and Ornate Frame with Cherubs.** Really neat piece 1100
- 158 **Fenton Peach Opal Dragon & Lotus Ruffled Bowl.** Very nice 3000
- 159 **Rare Fenton Marigold on Moonstone Dragon & Lotus Ruffled Bowl.** Has small spot of missing iridescence, but beautiful
- 160 **Rare Fenton Aqua Opal Dragon & Lotus Ruffled Bowl.** Tough to find and is very pretty
- 161 **Sowerby Marigold Derby 6 1/2" Vase.** Minor manufacturer roughness on base
- 162 **Rindskopf Marigold Egyptian Queen 6" Vase.**
- 163 **Brockwitz Moonprint 9 1/2" Vase.** Shallow flake on base
- 164 **Exceptionally Rare Blue Paneled Dragon 8" Vase.** (Maker Unknown). Featured in the Carnival Glass Encyclopedia. Minor flakes on edge
- 165 **Northwood Ice Blue Hearts & Flowers PCE Bowl.** Has pretty pastel iridescence
- 166 **Northwood White Hearts & Flowers PCE Bowl.** Nice pastel iridescence
- 167 **Northwood Ice Green Hearts & Flowers PCE Bowl.** Again, another nice one
- 168 **Northwood Green Hearts & Flowers PCE Bowl.** Has nice blue highlights
- 169 **Northwood Dark Marigold Hearts & Flowers Plate.** Spectacular, Very dark and even
- 170 **Northwood Electric Purple Hearts & Flowers Plate.** Super plate
- 171 **Imperial Gun Metal Windmill Water Pitcher.** Only one known in this color. Said to be an experimental treatment.
- 172 **Imperial Electric Purple Octagon Milk Pitcher.** Beautiful and scarce pitcher. This is the small one
- 173 **Northwood White Grape Arbor Tankard.** Frosty with super iridescence
- 174 **Northwood Ice Blue Daisy & Plume Rose Bowl.** Gorgeous frosty iridescence and darn good feet
- 175 **Northwood Aqua Opal Peacocks Bowl.** Fantastic! Again this is how they should look
- 176 **Northwood Horehound/Lavender Peacocks Bowl.** (Really Different Color). Very beautiful
- 177 **Northwood Smoke Peacocks Ruffled Bowl.** Very rare in smoke. Has plate holder nick in between two points
- 178 **Northwood Green Peacocks PCE Bowl.** Beautiful
- 179 **Fenton Reverse Amberina Opal Waterliily Footed Sauce.** Lots of Red Dots
- 180 **Fenton Red Orange Tree Small Mug.** Super Example! Looks red
- 181 **Fenton Red Grape & Cable 6" ICS Bowl.** Nice and red
- 182 **Fenton Red Plaid Ice Cream Shape Bowl.** Nice red bowl
- 183 **Fenton Red Coin Dot ICS 6 1/4" Bowl.** Cherry Red, Can't mistake this one
- 184 **Fenton Marigold Rustic Funeral Vase.** 18 1/2" tall, 8" opening, 5 1/4" base. Great looking vase
- 185 **Rare Fenton Electric Violet Rustic Funeral Vase.** 18" Tall, 8" opening and 5 1/4" base. Neat color, goes from amethyst at top to dark violet blue on bottom
- 186 **Spectacular Fenton Green Rustic Plunger Base Funeral Vase.** Great radium iridescence. 19 1/4" tall, 7 3/4" opening, 5 1/4" base. One flute missing.
- 187 **Super Fenton Blue Rustic Funeral Vase with Plunger Base.** 18 1/2" tall, 7 1/2" opening, 5 1/4" base. Another beauty!



227



215



217



103



172



234



107



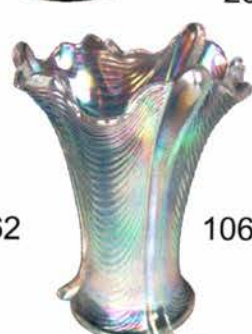
163



123



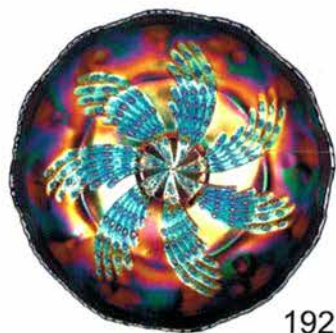
162



106



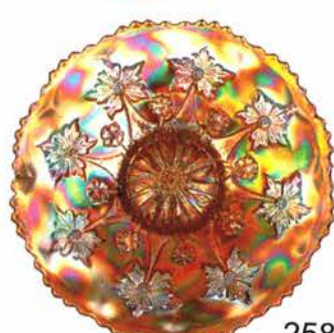
233



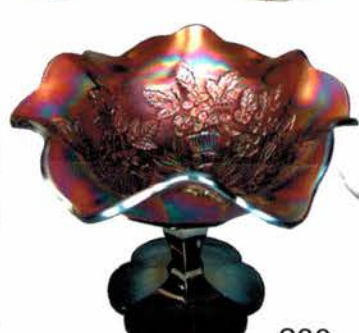
192



157



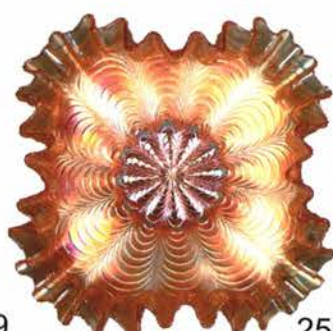
258



200



249



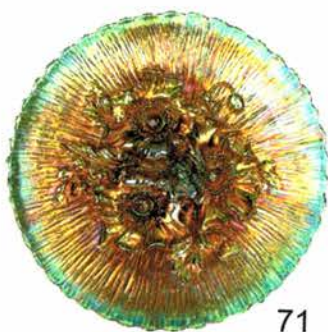
250



248



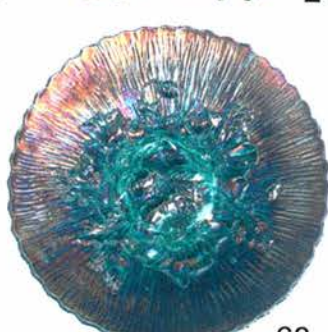
176



71



70

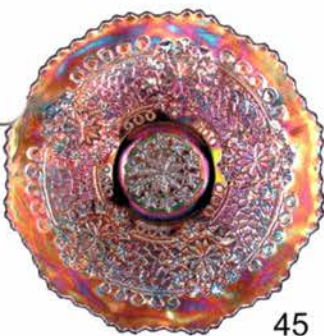


68



37

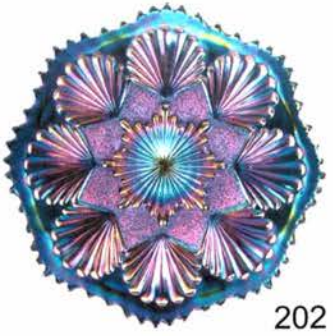




45



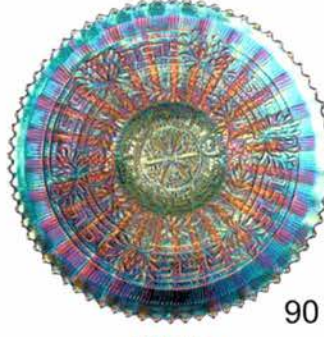
254



202



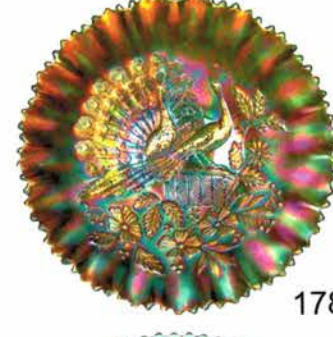
252



90



121



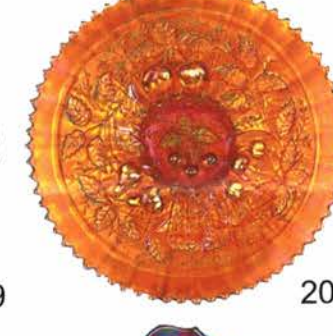
178



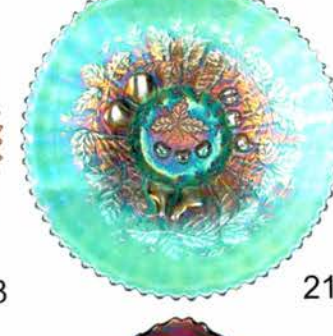
175



209



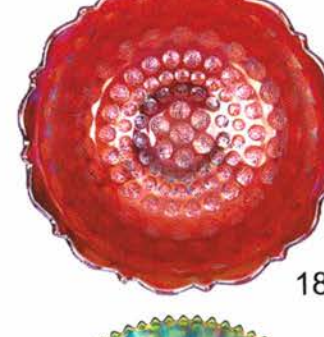
208



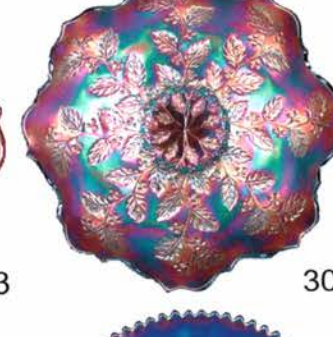
211



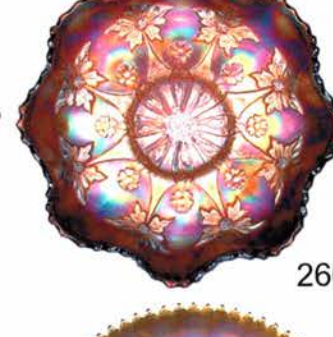
210



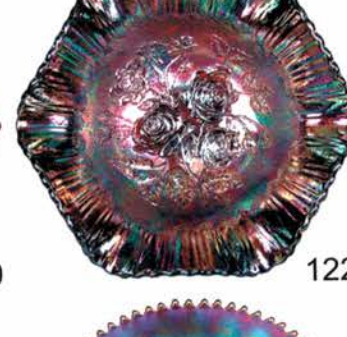
183



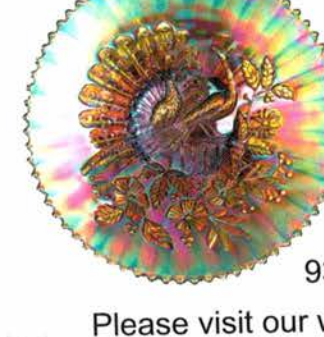
30



260



122



93



98



96



94

Please visit our website for a complete listing and photos of every item in the auction at: [www.remmenauction.com](http://www.remmenauction.com)

- 5-500
- 188 **Spectacular Fenton Amethyst Rustic Funeral Vase with Plunger Base.** 19 1/2" tall, 9" opening, 5 1/4" base. Electric from top to bottom
- 6-500
- 189 **Rare Fenton Marigold Rustic Funeral Vase with Plunger Base.** 19 1/4" tall, 7 1/2" opening, 5 1/4" base. Super rare and gorgeous. The best color from top to bottom
- 190 Scarce Fenton Blue Birds & Cherries Large ICS Bowl. Has minor spots of missing iridescence
- 750
- 191 **Fenton Green Dragon & Strawberry Footed Ruffled Bowl.** Pretty
- 192 **Fenton Electric Blue Fantail ICS 9 1/2" Bowl.** Fantastic, with butterfly and berry exterior
- 193 **Fenton Marigold Heart & Horseshoe Ruffled Bowl.** Rare & Beautiful! Shallow flake on bottom of collar base
- 900
- 194 **Millersburg Marigold Hanging Cherries 7" Plate.** Extremely Rare in this size. Turns up a bit
- 195 **Millersburg Marigold Trout and Fly 3/1 Edge Bowl.** Beautiful radium iridescence
- 1400
- 196 **Millersburg Amethyst Peacock at Urn 6" Plate.** Beautiful even color & flat. 800
- 197 **Scarce Millersburg Marigold Shotgun 7 1/4" 3/1 Edge Bowl.** Wonderful color
- 1250
- 198 **Millersburg Blue Peacock ICS Sauce.** Rare and pretty
- 199 Millersburg Amethyst Peacock at Urn Sauce.
- 1200
- 200 **Millersburg Amethyst Peacock at Urn Large Compote.** 9" diameter, 7 1/4" tall. Pretty satin iridescence 750
- 201 **Imperial Electric Purple Pansy Ruffled Bowl.** Imperial at its best
- 800
- 202 **Spectacular Imperial Smoke Shell & Sand Plate.** Beautiful blue & purple iridescence, has extremely shallow flake in body
- 2700
- 203 **Imperial Electric Purple Broken Arches Punch Set with Seven Cups.** Super and even with electric blue iridescence
- 204 **Northwood Lavender Three Fruits Plate.** Awesome!
- 205 Northwood Pastel Marigold Stippled Three Fruits Plate.
- 206 **Northwood Blue Stippled Three Fruits Plate.** Wow
- 207 **Northwood Purple Stippled Three Fruits Plate.** Another Beauty 1300
- 50
- 208 **Spectacular Northwood Pumpkin Marigold Stippled Three Fruits Plate.** So dark it is orange
- 209 **Northwood Electric Blue Stippled Three Fruits Plate.** WOW 2250
- 210 **Northwood Lavender Stippled Three Fruits Plate.** Incredible!
- 750
- 211 **Northwood Aqua Opal Stippled Three Fruits Plate.** Has small amount of epoxy on tip. Dripping with opal and incredible pastel iridescence.
- 212 Dugan Electric Purple Lined Lattice Vase. 9 1/2" tall, slight roughness on two toes
- 213 Dugan Marigold Squatty Lined Lattice Vase. 5" tall, 5 1/2" opening. A little cutie
- 214 Dugan Peach Opal Rib & Panel Squatty Vase. 5" tall, 5 3/4" opening
- 215 **Fenton Marigold Formal JIP Vase.** 7 1/4" tall. Very nice
- 216 Dugan Marigold Butterfly & Tulip Banana Boat Shape Bowl.
- 217 Northwood Purple Four Pillars Vase. 8 3/4" tall, small nick on one foot
- 218 Northwood White Diamond Points 10 1/4" Vase. Very pretty with a six fluted top
- 219 Northwood Green Diamond Points Vase. 10 1/2" tall.
- 220 **Northwood Pumpkin Marigold Stippled Strawberry PCE Bowl.** Spectacular!
- 221 **Northwood Green Stippled Strawberry PCE Bowl.** Nice iridescence
- 222 **Northwood Reninger Blue Stippled Strawberry Ruffled Bowl.** Scarce and very pretty
- 223 **Northwood Horehound Stippled Strawberry PCE Bowl with Basketweave Exterior.** Looks horehound and is beautiful
- 224 **Fenton Green Peacock & Grape Plate with Collar Base.** Pretty plate and rare
- 225 Fenton Marigold on Moonstone Peacock & Grape ICS Bowl. Very nice
- 226 **Extremely Rare Teal/Sapphire Freefold Vase.** Has beautiful smoke iridescence. Only one I've ever seen.
- 227 **Imperial Electric Purple Freefold Vase. 11" tall.** Killer with electric blue from top to bottom
- 228 Imperial Amber Beaded Bullseye Vase. Very Nice Vase
- 229 Imperial Marigold Morning Glory Funeral Vase. 17 1/2" tall, manufacture peeling on base
- 230 **Imperial Electric Purple Morning Glory Funeral Vase.** 17" tall, 7 1/2" opening, 4 7/8" base. Killer and very even
- 231 Imperial Purple Ripple Vase. 12 1/2" tall.
- 232 2 Imperial Amber Ripple Vases (Sold Choice). 1- 8 1/4", 1- 1/2"
- 233 **Imperial Marigold Small Zipper Loop Lamp. 7" tall.** Very pretty
- 234 Fenton Green Orange Tree Hatpin Holder. Small flake on edge of one foot
- 235 Northwood Pastel Marigold Good Luck Ruffled Bowl.
- 236 Northwood Electric Purple Good Luck Ruffled Bowl.
- 237 **Northwood Sapphire Good Luck Ruffled Bowl.** Beautiful, looks Sapphire
- 238 Northwood Green Good Luck Ruffled Bowl.
- 239 Northwood Electric Blue Good Luck Ruffled Bowl.
- 240 **Northwood Ice Blue Opal Good Luck Ruffled Bowl.** All I can say is WOW. Iridescence is phenomenal. Has tiny manufacturing bubbles in glass. Noted for the very picky
- 241 Northwood Pastel Marigold Stippled Good Luck Ruffled Bowl.
- 242 Northwood Pumpkin Marigold Stippled Good Luck Ruffled Bowl.
- 243 Marigold Aztec Sun Bottle. 8" tall, Scarce
- 244 Marigold Inca Bottle. Scarce
- 245 Fenton Pastel Marigold Two Flowers Giant Rosebowl.
- 246 **Fenton Green Peacock Tail 9 3/4" 3/1 Edge Bowl.** Largest size
- 247 **Fenton Amethyst Peacock Tail 9 3/4" 3/1 Edge Bowl.** Largest size
- 248 **Fenton Green Peacock Tail 9" Square Bowl.** Super rare bowl

- 249 **Fenton Amethyst Peacock Tail 9" Square Bowl.**  
Super rare bowl, very few known
- 250 **Fenton Marigold Peacock Tail 8 3/4" Square Bowl.**  
Super rare bowl, very few known!
- 251 **Fenton White Orange Tree Plate.** Outstanding Iridescence
- 252 **Super Fenton Electric Blue Orange Tree Plate.** Spectacular radium iridescence, one of the best you'll ever see!
- 253 **Fenton Green Lotus & Grape Plate.** Nice plate
- 254 **Fenton Marigold Coral Plate.** Super iridescence
- 255 **Fenton Marigold Captive Rose Plate.** Color from edge to edge
- 256 **Spectacular Fenton Electric Blue Heart & Vine Plate.** Nice & even, covered with purples and blues
- 257 **Fenton Blue Persian Medallion 9" Plate.** Great iridescence
- 258 **Fenton Marigold Little Flowers 10 1/2" Chop Plate.** One of the best
- 259 Fenton Red Little Flowers Large ICS Bowl. Scarce
- 260 **Fenton Amberina 9 3/4" Little Flowers Ruffled Bowl.**  
Another neat piece with pretty iridescence
- 261 Fenton Dark Marigold Peacock at Urn Ruffled Bowl. Has flake on side of marie
- 262 **Fenton Marigold on Moonstone Peacock at Urn Ruffled Bowl.** Super color and very open
- 263 **Fenton Emerald Green Peacock at Urn Ruffled Bowl.** Incredible! Has blue iridescence
- 264 **Fenton Marigold Peacock at Urn Plate.** Covered with pinks & blues
- 65 **Fenton Electric Blue Peacock at Urn Plate.** Nice and flat
- 266 **Fenton Blue Grape and Cable Fruit Bowl.** Has electric highlights and very pretty
- 267 **Northwood Marigold Tornado Vase.** Slight roughness on base
- 268 **Riihimaki Marigold Drapery Variant Water Pitcher.** Tough to find
- 269 Lot of Four Marigold Tumblers (Sold Choice). Drapery Variant, Cherry Circles, White Oak, Scale Band
- 270 Northwood Pearlized Custard Grape & Gothic Arches Tumbler.
- 271 **Northwood Emerald Green Grape & Gothic Arches Tumbler.** Beautiful
- 272 **Scarce Fenton Electric Purple Floral & Grape Tumbler.** Super, hard to find
- 273 Northwood Emerald Green Singing Birds Tumbler.
- 274 **Northwood Electric Blue Peacock at the Fountain Tumbler.** Incredible blue from top to bottom
- 275 **Imperial Electric Purple Tiger Lily Tumbler.**
- 276 **Fenton Blue Lily of the Valley Tumbler.** Very pretty and rare
- 277 **Dugan Electric Purple Heavy Iris Tumbler.**
- 278 **Northwood Horehound Raspberry Tumbler.** Rare tumbler
- 279 **Dugan Blue God and Home Tumbler.** Super iridescence
- 280 **Imperial Violet / Blue Four Seventy-Four Tumbler.** Beautiful and rare
- 281 Dugan Peach Opal Four Flowers 6 " Plate.
- 282 Dugan Electric Purple Fisherman's Mug. Beautiful from top to bottom
- 283 **Scarce Dugan Peach Opal Fisherman's Mug.** Beautiful dark iridescence
- 284 **Dugan Electric Purple Cherries Tight Crimped Edge Plate.**
- 285 **Dugan Dark Marigold Dahlia Water Pitcher.** Covered with pinks and blues
- 286 Dugan White Six Petals 8" Ruffled Bowl. Beautiful frosty iridescence
- 287 Dugan Electric Purple Six Petals 8" Ruffled Bowl.
- 288 **Dugan Purple Fanciful Plate.** Electric Highlights
- 289 **Dugan Purple Apple Blossom Twigs Plate.** Electric highlights
- 290 **Dugan Electric Purple Farnyard Ruffled Bowl.** This has got to be one of the best. It might be time to up-grade
- 291 Purple Triad Carnival Glass Hatpin & Lavender Rooster Carnival Glass Hatpin. (Sold Choice)
- 292 Purple Moiré Beetle Carnival Glass Hatpin & Purple Top o' the Morning Carnival Glass Hatpin. (Sold Choice)
- 293 Purple Belle Carnival Glass Hatpin.
- 294 Purple Tufted Throw Pillow Carnival Glass Hatpin.
- 295 **Purple Hearts & Cross (Four of Hearts) Carnival Glass Hatpin.**
- 296 Purple Basketflower (Sunflower Basket) Carnival Glass Hatpin.
- 297 Purple Six Plums (Cattails) Carnival Glass Hatpin.
- 298 Purple Dragonflies Carnival Glass Hatpin.
- 299 **Blue Scarab Shell Carnival Glass Hatpin.**
- 300 **Amber Concentric Circles Hatpin. Extremely Rare! Only one reported.**

**Remmen Auction Service would like to thank you all for attending.**  
We are always in search of high quality Carnival Glass, please call us for all your auction needs.



# Remmen Auction & Appraisal Service

P. O. Box 301398 • Portland, Oregon 97294-9398  
Phone: (503) 256-1226 • Cell Phone: (503) 756-2629

Presorted  
First-Class Mail  
U.S. Postage  
PAID  
Eugene, Oregon  
Permit No. 305



230



229

T3 P1 \*\*\*\*\*AUTO\*\*MIXED\*\*AADC 974  
LEE MARKLEY  
PO BOX 306  
MENTONE IN 46539-0306



59



58



60



283



269



203



140



66



128



82



129



67