

Outstanding Carnival Glass

AUCTION

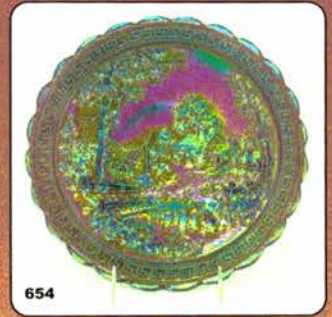
Friday, November 18th, 2005 -- 5:00 P.M.

Lots 1-238

Saturday, November 19th, 2005 -- 9:00 A.M.

Lots 239-803

Robert J. Bishop Estate of Carnival Glass



Holiday Inn - Wentzville

900 Corporate Parkway (Exit 212a off of I70)

Wentzville, Missouri

For Reservations call: 636-327-7001

Seeck Auctions

P.O. Box 377
Mason City, Iowa 50402

JIM & JAN SEECK

641-424-1116





Outstanding Carnival Glass Auction

FRIDAY, November 18th, 2005 -- 5:00 P.M.(lots 1 – 238)

SATURDAY, November 19th, 2005 -- 9:00 A.M.(lots 239 – 803)



Holiday Inn – Wentzville, Missouri

(Preview: Friday, November 18th – 3 pm to 5 pm)

NO BUYER'S PREMIUM

Seeck Auctions is pleased to be selling at auction the Carnival Glass estate of Bob Bishop from Massachusetts. Bob was a long-time collector and was very involved with the NECGA club. All the glass will be sold without reserve and it all will sell (all 1500 pcs.) Yes, we will call this a “Mega” carnival glass auction. Friday afternoon and evening will consist of many lots w/several pieces in them. Also, on Friday we have tried to put all the damaged items. There are some extremely rare items here, some have major damage and others have just minor damage. So don't miss out on the Friday items! Saturday will be a super day of glass - approx. 550 lots of single pieces. The auction is full of everything from Stretch, Brocaded, great vases, quality iridescence and rarity. Don't miss this “Mega” auction!

We would like to let everyone know that we are now accepting MasterCard and Visa for purchases at the auction and also for absentee bidding. We will also be executing live phone bidding on this auction (SAT. ONLY). Please see policy below. Reservations can be made by calling the hotel directly at 636-327-7001. Please mention the “Seeck Auction” for a room rate of \$65.00.

Don't forget to check out our website for lots of pictures!

www.seeckauction.com

Also, please email us and we will put you on our email mailing list for auction notices.

Terms: Cash or Check, VISA and MasterCard accepted w/proper ID. **3% Clerking Fee** on all purchases except for payment of cash or check. Announcements made day of sale take precedence over any printed information.

Lunch will be available.

LIVE PHONE BIDDING POLICY (Saturday Only)

1. If you would like to participate in live phone bidding, contact us by the Tuesday before the auction (Nov. 15th).
2. We will need to know the lot# and the phone number that you can be reached at the day of the auction.
3. We will also need your home phone number if different than number provided in #2.
4. There will be a \$5 fee per lot for all phone bidding if successful or not.
5. We will only have 2 phone lines available at the auction, so if more than 2 bidders are interested in the same lot, we will contact you before the auction and the highest 2 absentee bidders will be the ones to be called.
6. Shipping, Insurance & \$5.00 fee will be charge on each successful bid.
7. Please call with questions. 641-424-1116.

ABSENTEE BID POLICY

1. Write-in bids will be accepted by sending the numbers of the item(s) desired and the amount bid on each to: Seeck Auctions, PO Box 377, Mason City, Iowa 50402.
2. Bids may be called in over the telephone. (This is not live auction bidding) (641)424-1116.
3. You may email your bids to us: jimjan@seeckauction.com Continue to include the numbers of the item(s) you would like to bid on and amount bid on each, please include your telephone number.
4. There is a \$5 handling charge for each successful bid. Shipping and insurance charges are additional.
5. Bidders will be notified by phone/email if their bid(s) are successful. This will be done 1 - 3 days after the auction.
6. Please have all bids in by Tues., Nov 15th. All bids (by mail, phone or email) after this date may not be carried out.
7. Please place bids in the following increments: \$1 to \$300 - \$5 increments \$300 up - \$25 increments.
8. If you do not receive an item that sold for less than your bid, assume we cancelled your bid because the piece of glass had below average color, manufacture problem, damage or was not listed correctly.
9. Auction results are posted on our website within 5 days of the auction (depending on drive time home from the sale.)

Day 1 - Friday, November 18th - 2005 - 5:00 P.M.

- ___ 1. Beauty Bud or similar vases (10) – CHOICE
- ___ 2. Misc. non-descript vases (12) - CHOICE
- ___ 3. Peach Opal vases(14) including: Target, Thin Panels, Pulled Loop, Dugan's Wide Rib & Wide Rib - CHOICE
- ___ 4. Peach Opal sauces(10) including: Wishbone & Spades, Hobstar & Fruit, Dugan Cherries, Ski Star, Smooth Rays and Petal & Fan - CHOICE
- ___ 5. Marigold lg bowls(12) including: Pony, Orange Tree, Strawberry, Dragon & Lotus, Sunflower, Cherry Chain, Stippled Three Fruits, Leaf Chain, Vintage, Scroll Embossed, Fenton Peacock at Urn and Grape & Cherry - CHOICE
- ___ 6. Smooth Rays ruffled bowl in blue Moonstone; Smooth Rays ruffled compotes in blue opal(2); Two-Seventy ruffled compotes(2) in blue opal; Little Beads compotes in marigold, blue opal, peach opal & marigold on moonstone; Little Beads plate in amethyst – CHOICE
- ___ 7. N's Thin Rib vases in olive green(4); Corinth vases in aqua, amethyst, olive green, green, lime green & amber - CHOICE
- ___ 8. Peach Opal compotes(12) including: 270; Pearly Dot; Question Mark; Coin Spot; Smooth Rays and Beaded Panels - CHOICE
- ___ 9. Enamel decorated Carnival Glass shades(8) - CHOICE
- ___ 10. Marigold tumblers(10) including: Tiger Lily; Butterfly & Berry; Stork & Rushes w/Lattice Band; Luster Rose; Stork & Rushes w/Beaded Band; Lattice & Daisy; Lattice & Grape - CHOICE
- ___ 11. Hat shapes(15) including: Blackberry Spray Blackberry Spray Variant square in amethyst & vaseline; Blackberry Spray square in vaseline; Blackberry Spray 2-sides up in amethyst; Blackberry Spray JIP CRE in marigold & lime green; Briar Patch square in blue; Holly ruffled in blue; Holly square in marigold; French Knots in amethyst; Peacock Tail ruffled in marigold; Flowering Dill JIP CRE in marigold - CHOICE
- ___ 12. Peach opal bowls(14) including: Dugan Cherries; Single Flower; Daisy Dear; Daisy & Plume; Pillow & Sunburst; Single Flower Framed - CHOICE
- ___ 13. Bon bons(10) including: Strawberry in green & marigold; Lotus & Grape in marigold; Pond Lily in white; Question Mark in white & peach opal; Puzzle in peach opal; Persian Medallion in powder blue; Birds & Cherries in amethyst; Prisms in amethyst - CHOICE
- ___ 14. Purple tumblers(10) including: Acorn Burrs; Wreathed Cherry; Diamond Lace; Heavy Iris; G&C; Raspberry; Floral & Grape; Butterfly & Plume; Rambling Rose - CHOICE
- ___ 15. Baskets, all marigold(11) including: Imperial Grape; Waffle Block; Miniature Basketweave; May basket and others - CHOICE
- ___ 16. JIP vases(15) including: Curled Rib in smoke & marigold; Fenton's Ftd Fine Rib in blue; Thin Panel in purple; Corinth in marigold on moonstone, marigold on milkglass, green, amethyst, purple, amber, teal and marigold - CHOICE
- ___ 17. Peach opal bowls(12) including: Lg Petal & Fan; Lg Ski Star; Dugan Cherries; Stippled Petal; Double Stemmed Rose; Dogwood Spray; Fanciful; Smooth Rays - CHOICE
- ___ 18. Fenton compotes(12) including: Stream of Hearts in marigold; Thistle in marigold; Wreath of Roses in green & marigold; Blackberry Bramble in amethyst & marigold; Birds & Cherries in marigold; Small Persian Medallion in marigold; Sailboats in marigold; Iris in blue - CHOICE
- ___ 19. Green tumblers(9) including: M'burg Diamonds; Acorn Burrs; Imperial Grape; Double Star; Wishbone; Tiger Lily; Windmill; Singing Birds; Oriental Poppy - CHOICE
- ___ 20. Pinched Swirl vases (5 var shapes) in peachopal; Rib & Panels (3 var shapes) in marigold; Compote vases in amethyst & green - CHOICE
- ___ 21. Goblets(14) including: Imperial Grape in purple, smoke & marigold; Wine & Roses in powder blue, aqua & marigold; Lacy Dewdrop in pearlized; Orange Tree in marigold, pink & blue; Star Medallion in smoke; Skull in marigold - CHOICE
- ___ 22. 7" Bowls(12) including: Ftd Lotus & Grape in blue & marigold; Lotus & Thistle in marigold; Six Petal in peach opal; M'burg Strawberry in marigold; Inverted Strawberry in green; Mirrored Lotus in blue; Lattice & Daisy in purple; Acorn in marigold; Grape Wreath in marigold & green; Bells & Beads in peach opal - CHOICE
- ___ 23. All purple vases(11) including: Tree Trunk; Thin Rib; Diamond Point; Target; April Showers; Pulled Loop; Ripple and Fenton's Flute - CHOICE
- ___ 24. Rose bowls(9) including: Louisa in green; Grape Delight in white; Fenton Flowers in green; Garland in marigold; Concave Flute in marigold; Fine Cut & Roses in green; Fenton Flowers w/smooth edge in blue; Daisy & Plume in marigold; Diamond Ring in marigold; Vintage Ferneries in blue and green – CHOICE
- ___ 25. Peach opal pcs.(11) including: Scales; Stippled Petal; Ski Star; Dugan Cherries; Single Flower; Single Flower Framed - CHOICE
- ___ 26. Holly & Rose Spray compotes(13) including: Holly ruffled in pink, vaseline, powder blue & marigold; Holly goblet in pink & lime green; Holly banana boat in blue & marigold; Rose Spray goblets in celest blue & marigold - CHOICE
- ___ 27. Bowls(10) including: Sunflower in green; Heart & Vine in blue & amethyst; Strawberry in amethyst & green; Dragon & Lotus in green & blue; Star of David & Bows in amethyst; Windflower in blue; Waterlily in green - CHOICE
- ___ 28. Peach opals pcs.(11) including: Single Flower bowls w/enamel decoration; Stippled Petal bowls w/enameled decoration; Holly & Berry nappies; Holly & Berry bowl; and Leaf Ray nappies - CHOICE
- ___ 29. Blue tumblers(10) including: Peacock at the Fountain; Stork & Rushes; Ftd Orange Tree; Bouquet; Rambling Rose; Butterfly & Fern; Lattice & Daisy; Grape & Gothic Arches; Floral & Grape - CHOICE
- ___ 30. Wheel carved etched 7 pc. water set w/lid - lavender flashed irid.
- ___ **31. Venetian giant rose bowl - green - might be the prettiest one I've seen, has two small hits inside of bowl**
- ___ 32. Floral & Optic ftd rose bowl - marigold on milkglass - chip on foot
- ___ **33. Grape & Cable master IC bowl - ice green - large chip on collar base**
- ___ 34. Grape & Cable master IC bowl - white - epoxy on base
- ___ 35. Acorn ruffled bowl - ice blue - heat check in base
- ___ 36. M'burg Rays & Ribbons IC shaped bowl - amethyst - chip on outside edge, radium & pretty
- ___ 37. M'burg Rays & Ribbons IC shaped bowl - marigold - one pt chipped, radium
- ___ 38. Holly 2-sides up hatshape - red - small heat check in base
- ___ 39. Dahlia butter dish & spooner - white - both have damaged feet, choice
- ___ **40. M'burg Hanging Cherries large size IC shaped bowl - aqua - chip & separation in base, rare color**
- ___ 41. Inverted Strawberry candlesticks - marigold - chips along base of both
- ___ 42. Stippled Grape & Cable humidor - marigold - super pretty, has chip on lid
- ___ 43. M'burg Sunflower pin tray - green - chips on edge
- ___ **44. M'burg Sunflower pin tray - amethyst - large chip on front**
- ___ **45. Stippled Three Fruits spt ftd ruffled bowl - aqua opal - chip on foot**
- ___ 46. Three Fruits spt ftd ruffled bowl - ice blue - couple of nicks on feet

- ___ 47. Double Scroll console bowl & 1 candlestick - white - open bubble on base of bowl
- ___ 48. Dragon & Lotus spt ftd ruffled bowl - peach opal - chips on cleats of 2 feet
- ___ 49. Big Basketweave 9 1/2" vase - blue - large chip on base
- ___ 50. Nippon PCE bowl w/ribbed backs (2) - ice blue - minor nicks, CHOICE
- ___ 51. Open Rose lg round bowl - blue - large chip off base
- ___ 52. Embroidered Mums ruffled bowl w/ribbed back - ice blue - chip on edge
- ___ 53. Blackberry miniature compote - white - several chips around base
- ___ 54. Blackberry miniature compote - amethyst - chips on base
- ___ **55. Wide Panel epergne with trumpet center lily - marigold - very nice, one has lg chip by small lily insert, couple other minor nicks, minor for this piece**
- ___ **56. Wide Panel epergne, base, center lily & 1 side lily - amethyst - sold as set, chip on base**
- ___ 57. Rose Bouquet 2 hdl bon bon - white - super rare, burst in base
- ___ 58. Fenton's Flute 9" vase - red - chips on top edge
- ___ 59. Formal hatpin holder - marigold - chips on base
- ___ **60. Peacock at the Fountain water pitcher - white - 2 lg chips on base**
- ___ 61. Peacock at the Fountain 6 pc. water set - marigold - chip on base of pitcher
- ___ 62. N's Eight Sided bushel baskets(2) - ice blue - chip on top edge & other w/crack in hdl - CHOICE
- ___ 63. N's Eight Sided bushel basket - blue - chips on top edge
- ___ 64. Stippled Rays 10" ruffled bowl - white - open bubble on base
- ___ 65. Four Pillars 10" vases(3) - aqua opal - each w/a little damage - CHOICE
- ___ 66. Four Pillars 9" vase - sapphire - extremely rare color, minor nick on top edge
- ___ **67. Imperial Grape ruffled bowl - marigold on moonstone - super rare, chip on back edge**
- ___ 68. Orange Tree hatpin holder - green - lg chip off top of foot, rare color
- ___ 69. Orange Tree hatpin holder - blue - lg chips on foot
- ___ **70. Border Plants handgrip dome ftd plate - purple - fantastic, has manufacture burns on edge, very minor**
- ___ 71. Enameled candle lamps(2) - marigold - CHOICE
- ___ 72. Brocaded Poppies lg stemmed compote - ice green
- ___ 73. Brocaded Poppies lg stemmed compote - white - has twisted stem
- ___ 74. Brocaded Poppies candlesticks - white
- ___ 75. Brocaded Poppies candlesticks - ice green w/frosted tops
- ___ 76. Brocaded Acorns short candlesticks - ice blue
- ___ 77. Brocaded Poppies bulbous 5" vase - white
- ___ 78. Brocaded Poppies small salver - pink
- ___ 79. Brocaded Poppies small salver - ice green
- ___ 80. Brocaded Palms hdl bowl - ice green
- ___ 81. Brocaded Poppies shallow short compote - white
- ___ 82. Brocaded Palms base to oval dish - ice green
- ___ 83. Brocaded Poppies water glasses (4) - white - all to go
- ___ **84. Loetz Lion ink well? - green**
- ___ **85. Grape & Cable banana boat - ice blue - lg chip on foot**
- ___ 86. Grape & Cable banana boat - blue - nick on top edge
- ___ 87. Fruits & Flowers bon bon - aqua opal - polished base
- ___ 88. Grape & Cable cracker jar - purple - chip on base
- ___ **89. Fisherman's mug - peach opal - chip on base**
- ___ 90. Inverted Strawberry powder jars(2) - marigold - both have nicks, CHOICE
- ___ **91. Rose Show ruffled bowl - ice green - minor nick on base**
- ___ **92. Rose Show ruffled bowl - ice blue - couple of minor nicks on base**
- ___ 93. Cvd Frog candy dish - ice green - top is mint, base is badly damaged
- ___ 94. Hearts & Flowers ruffled compote - aqua opal - fantastic! has repaired lg chip on base
- ___ 95. M'burg Diamonds water pitcher - amethyst - chip on base
- ___ 96. Orange Tree loving cup - white - several nicks along hdl, one hdl looks cracked
- ___ 97. Floral & Optic round ftd bowl - red - lg chip on foot
- ___ 98. Target 12" vase - white - chips on base
- ___ 99. Two Flowers spt ftd ruffled bowl - red - two cleats chipped on feet
- ___ **100. M'burg Peacock at Urn lg IC shaped bowl - green - satin, super, manufacture separation on base w/chip off of that**
- ___ 101. Blackberry Spray ruffled hatshape - red - heat check in base
- ___ 102. M'burg Hobnail rose bowl - marigold - couple of nicks on hobs
- ___ **103. Butterfly & Berry 9" vase - red slag - very thick slag, neat piece, has couple nicks on base**
- ___ 104. Grape & Cable powder jar - purple - lid has lg chips
- ___ 105. Garden Path Variant lg ruffled bowl - peach opal - one pt polished off
- ___ 106. Peacocks ruffled bowl w/ribbed back - aqua opal - chip on edge
- ___ 107. Diamond Points 10" vase - blue - chip on base, very pretty
- ___ **108. Dragon & Lotus spt ftd round shaped bowl - lime green opal - lg open bubble on foot**
- ___ 109. Lattice & Points 7" vase - blue - nick on top edge, pretty
- ___ 110. Peacock at the Fountain cvd sugar bowl - white - burst on edge of lid
- ___ 111. Nippon ruffled bowl w/BW back - green - minor rough point, nice
- ___ 112. N's Bushel Basket - ice green- nick on cleat
- ___ 113. M'burg Seacoast pin tray - green - chip on back edge
- ___ 114. Fenton's Stretch #8 cvd candy jar - red - rare color
- ___ 115. Fenton's Stretch #8 cvd candy jar - white w/grape etching
- ___ 116. Pair of Stretch cornucopia candlesticks - ice blue
- ___ 117. Pair of Stretch cornucopia candlesticks - white
- ___ 118. Fenton's Stretch #9 cvd candy jar - ice green w/grape etching
- ___ 119. Fenton's Stretch #9 cvd candy jars(3) - white w/grape etching - CHOICE
- ___ 120. Fenton's Stretch #9 cvd candy jar - celest blue w/grape etching
- ___ 121. Imperial Stretch Colonial or #600 Chesterfield 7 pc. water set - aqua teal - very rare, damage where hdl applies
- ___ 122. Imperial Stretch Colonial or #600 Chesterfield tumbler - white
- ___ 123. Fenton's Stretch #251 Bud JIP vase - wisteria
- ___ 124. Stretch 8 1/2" vase w/3 1/2" base, 6 1/2" mouth - red
- ___ 125. Fenton's Panels Stretch 12" vase - celest blue
- ___ 126. Fenton's Panels Stretch 11" vase - ice green
- ___ 127. Dugan Stretch 3/4 lb. cvd paneled candy jar - red - top knob broken & glued
- ___ 128. Fenton's Stretch Ring Optic 14 1/2" vase - celest blue - has partial Fenton paper label
- ___ 129. Fenton's Stretch Roll Optic 15" vase - pink
- ___ 130. Rose Spray JIP compote - celest blue
- ___ 131. Diamond Stretch 8 1/2" pinched vase - ice green
- ___ 132. Stretch glass ruffled vases(3) - white, celest blue, ice green - CHOICE
- ___ 133. Fenton's Stretch #3 cream & sugar sets(3) - celest blue, white & marigold - CHOICE
- ___ 134. Fenton's Stretch #3 sugar bowls(2) - ice green, pink - CHOICE
- ___ 135. Fenton's Stretch #1533A Dolphin vase - pink
- ___ 136. US Glass Stretch #1314 compote - white

- ___ 137. Stretch glass ashtrays(2) - celest blue & ice green - CHOICE
- ___ 138. Fenton's Stretch #316 candlesticks - white
- ___ 139. Imperial Stretch #600 4 1/2" compote - red
- ___ 140. Imperial Stretch #600 sherbet - red
- ___ 141. Stretch glass vases (6) - choice
- ___ **142. Arched Flute toothpick holder - wisteria**
- ___ 143. Fenton's Stretch #314 candlesticks - white
- ___ 144. Imperial Stretch #22 Ribbed Optic sugar bowl - red
- ___ 145. Misc. Stretch glass pcs.(9) - all celest blue - CHOICE
- ___ 146. Stretch rose bowl - red
- ___ 147. Stretch glass pcs.(8) - CHOICE
- ___ 148. Fenton's Stretch #1623 Dolphin candlesticks - wisteria - one damaged
- ___ 149. Floral & Optic ftd round bowls(2) - red & teal blue - CHOICE
- ___ 150. Floral & Optic ftd rose bowl - aqua teal
- ___ **151. Town pump - green - extremely rare, one pt chipped & cracked**
- ___ **152. Town pump - marigold - handle crack, rare**
- ___ 153. Cambridge cologne bottle - green - wrong stopper
- ___ **154. Poppy Show ruffled bowl - marigold - very pretty, chip on base**
- ___ **155. Poppy Show ruffled bowl - ice blue - manufacture separation in base & heat check in base**
- ___ 156. Stippled Grape & Cable humidor lid - blue - rare color
- ___ 157. Fine Cut & Roses candy dish - aqua opal - repair on foot
- ___ 158. M'burg Hanging Cherries IC shaped bowl - amethyst - radium, pretty, chip on base
- ___ 159. Drapery rose bowl - aqua opal - repair on base
- ___ 160. Wishbone ftd ruffled bowl - blue - very pretty, chip on point
- ___ 161. M'burg Whirling Leaves ruffled bowl - amethyst - radium, chip on edge
- ___ 162. Little Flowers 10" 3 in 1 edge bowl - amberina - rare, cracked
- ___ 163. M'burg Tulip Scroll 10" vase - marigold - heat check in base
- ___ 164. Grape & Cable humidor - purple - sponge holders damaged on lid
- ___ 165. N's Thin Rib 9 1/2" vase - ice blue - heat check in rib half way down vase
- ___ 166. Tree Trunk mid-size 13 1/2" funeral vase - purple - very pretty, several rough spots on top edge
- ___ 167. M'burg Holly Sprig lg round bowl - marigold - radium, chips on edge
- ___ 168. Tornado lg size vase - green - lg chip on base
- ___ 169. Fern crimped edge hatshape - red - minor chip on base
- ___ 170. Plain Jain basket - purple - pretty - mint
- ___ 171. Plain Jain basket - marigold on milkglass - mint
- ___ 172. Plain Jain basket - white - mint
- ___ 173. Plain Jain basket, small - ice green - mint
- ___ 174. Stork & Rushes hldd basket - marigold - mint
- ___ **175. Fashion tumbler - purple - very rare color, nice**
- ___ **176. Chatelaine tumbler - purple - pretty**
- ___ 177. Checkerboard tumbler - amethyst - scarce
- ___ 178. Checkerboard tumbler - marigold - nick on base
- ___ 179. Concave Diamond tumbler - vaseline - scarce
- ___ 180. Concave Diamonds tumbler - celest blue
- ___ 181. Fashion tumbler - smoke - scarce
- ___ 182. N's Dandelion tumbler - ice blue - scarce
- ___ 183. Cherry & Cable tumbler - marigold
- ___ 184. Enameled Apple Blossom tumbler - blue - scarce
- ___ 185. Windmill tumbler - purple - nice
- ___ 186. Cosmos & Cane tumbler - white - scarce
- ___ 187. Luster Rose tumbler - powder blue - odd color
- ___ 188. Strawberry Scroll tumbler - marigold
- ___ 189. Grape & Gothic Arches tumbler - irid. custard
- ___ 190. Jeweled Heart tumbler - marigold
- ___ **191. White tumblers including: Lattice & Grape; Peach; Grape Arbor; Apple Tree; Blueberry; Oriental Poppy; Ftd Orange Tree; Iris; Enameled Lotus; CHOICE**
- ___ **192. Marigold tumblers including: Ten Mums; Grape & Cable; Grapevine Lattice; Wreath Cherries; Waterlily(2); Apple Tree; Fashion; Fieldflower; Enameled Iris; CHOICE**
- ___ **193. Blue tumblers including: Apple Tree; Peach; Enameled Daisy & Little Flowers; Blueberry; Orange Tree Scroll; Tiger Lily(foreign); Orange Tree Orchard; CHOICE**
- ___ **194. Marigold tumblers including: Oriental Poppy; Field Flower; Rambling Rose; Leaf Tiers; Bouquet; Singing Birds; Acorn Burrs; Cut Cosmos; Blueberry; Feather & Heart; CHOICE**
- ___ **195. Purple/amethyst tumblers including: Tiger Lily; Imperial Grape; Fluffy Peacock; Field Flower; Four-Seventy-Four; Marilyn; Oriental Poppy; M'burg Diamonds(3) - CHOICE**
- ___ **196. Marigold tumblers including: M'burg Diamonds; Omnibus; Shod; Grape Arbor; Plain; Star & File; Flute; Beaded Spears; Beaded Panels & Grapes; Engraved Flower; Beaded Spears Var; Enameled Forget-Me-Knot; Etched Juice glass; Enameled Freesia; Enameled Double Daisy; Enameled Magnolia & Drape; Enameled Silver Queen; CHOICE**
- ___ 197. Peacock at the Fountain ruffled compote - purple - crack in base
- ___ 198. Holly ruffled hatshape - aqua opal - burst in side
- ___ 199. Fenton Peacock at Urn ruffled compote - red - chip on top edge of base
- ___ 200. Grape & Cable perfume bottles(2), no stoppers - purple - CHOICE
- ___ 201. Grape & Cable perfume bottle, no stopper - marigold
- ___ **202. Grape & Cable hatpin holder - ice blue - one foot broke off & glued back on**
- ___ 203. Grape & Cable hatpin holder - purple - chips on feet
- ___ **204. Vintage 9" ruffled bowl - red - very rare & nice, minor nicks on edge**
- ___ 205. Leaf & Beads rose bowl - purple - chips on feet
- ___ 206. Peacock & Grape spt ftd IC shaped bowl - lime green opal - chips on cleat foot
- ___ 207. Leaf Columns 10" vase - white - burst on base
- ___ 208. Windflower hldd nappy - ice green - lg chip on edge by handle
- ___ 209. Nautilus 6" whimsey vase - purple - chips on base
- ___ 210. Concord 9" plate - amethyst - very rare, chips on base
- ___ 211. Pastel Swans including: celest blue(5); pink(3); ice green(4) - CHOICE
- ___ 212. Cordial sets (2) - CHOICE
- ___ 213. Carnival Glass shades (14) - CHOICE
- ___ 214. Wine bottles including: Octagon w/damaged stopper - marigold; Diamond & Sunburst - marigold w/stopper, purple w/o stopper; Imperial Grape - smoke & green (both w/o stoppers); CHOICE
- ___ 215. Wine glass & cordials including: Golden Harvest(2) - purple; Golden Harvest - amethyst; Imperial Grape - green(4), purple(1), smoke(1); Diamond & Sunburst - marigold; Octagon - green; Sailboats - marigold & blue; Souvenir(2); Interior Panel - marigold; Foreign cordial - marigold; Octagon(4) - marigold; CHOICE
- ___ 216. Marigold vases including: Diamond Points; April Showers; Boggy Bayou; Rustic mid-size; Freefold; Rococco; Four Pillars; Lined Lattice; Knotted Beads; Parlor Panels; Flute; CHOICE
- ___ 217. Sauces including: Wild Strawberry - purple; Diamond Ring - purple & smoke; Oval & Round - smoke; Panther - blue & marigold; Two Flowers - powder blue; Waterlily - lime green & marigold; Sailboats - marigold; Persian Medallion - green; Cosmos - green; Pinecone powder blue; Smooth Rays - marigold on milk glass; CHOICE

Day 2 - Saturday, November 19th - 2005 - 9:00 A.M.

- ___ 218. Compotes including: Imperial Grape - lavender & clambroth; Hobstar Flower - marigold & green; Leaf Swirl(2) - amber; Hobstar Band - marigold; Columbia - marigold; Octagon - marigold; Scroll Embossed - purple; Columbia Var - marigold; Fine Cut Flowers - marigold; Flute & Cane - marigold; Inverted Feather - marigold; CHOICE
- ___ 219. Vases including: April Showers - green; Mini Morning Glory(2) - marigold; Left Hand vase - marigold; Octagon vase - marigold; Hdld vase - marigold; Smooth Panels - marigold on milkglass; Ripple - amber; Triads - marigold; Plume Panels - blue; Thin Panel - peach opal; CHOICE
- ___ 220. Bowls including: Coin Spot - amber; Scales - peach & marigold on milkglass; Pillow & Sunburst - amber; Lattice & Points plate - marigold; Corinth - amber & peach opal(2) & marigold on moonstone & marigold on milkglass; CHOICE
- ___ 221. Contemporary pcs. including: Unsigned Hanson Town Pump - purple; 1980 Good Luck hatpin holder - ice green; 1982 PNW Fisherman's mug - peach opal; 1982 ACGA Seacoast spittoon - peach opal & more; CHOICE
- ___ 222. Peach Opal & Moonstone pcs. including: Fan open sugars(2) - peach; Fan gravy boat - peach opal; Orange Peel sherbets(2) - peach opal; Fruit Salad punch cup - peach opal; 270 compote - marigold on milkglass; Folding Fan compote - marigold on milkglass; Coin Dot compote - marigold on milkglass; CHOICE
- ___ 223. Vases including: Thin Rib(2)- green; Paneled Diamond & Bows - green; Lattice & Points - marigold; Smooth Panels - marigold; Ripple(4) - clambroth; Ripple - green; Standard - marigold & others; CHOICE
- ___ 224. Heavy Grape small bowl - purple; Big Basketweave basket - purple; Vintage epergne - green; Boutonniere compote - green & marigold; Stippled Rays compote - marigold; Graceful vase - purple & green; 270 compote - aqua; CHOICE
- ___ 225. All White pcs. including: Leaf Rays nappy; Grapevine Lattice ruffled 6" bowl; Cherry Chain sauces(4); Lattice & Points vase; Dahlia berry bowl; Orange Tree berry bowl; Leaf Chain 7" bowl; Floral & Optic cake plate; Orange IC shaped bowl; CHOICE
- ___ 226. Marigold pcs. including: Bird & Grape wall pocket; Woodpecker wall pocket; Daisy car vase; Waterlily saucer; Blackberry Open Edge ruffled hats(2); Pansy nappy; Stork & Rushes berry bowl; Windmill milk pitcher; Grape Wreath berry bowl; Pansy pickle dish; CHOICE
- ___ 227. Vases including: Diamond Rib - green & blue; April Showers - blue; Fenton Fine Rib - blue; Rustic - blue; Freefold - green; Four Pillars - powder blue; MaryAnn - marigold; Ftd Fine Rib - marigold; Fine Rib - blue; Butterfly & Berry - blue; Cut Flowers - marigold; & Others; CHOICE
- ___ 228. Orange Tree shaving mug - blue; Vintage Banded mug - marigold; Colonial mug - marigold; Orange Tree mug - marigold; Diamond Lace sauce - purple; Louisa nut bowl - purple; Wild Rose bowl - green; Peacock at the Fountain berry bowl - ice blue; 270 compote - amber; Foreign bowl - blue; and Others; CHOICE
- ___ 229. 19 pcs. of Carnival Glass - CHOICE
- ___ 230. 19 pcs. of miniature Carnival Glass - CHOICE
- ___ 231. 11 Glass shades - CHOICE
- ___ 232. 14 pcs. Carnival Glass - CHOICE
- ___ 233. 10 Glass pcs. - CHOICE
- ___ 234. 11 Glass pcs. - CHOICE
- ___ 235. 14 Glass pcs. - CHOICE
- ___ 236. 11 Glass pcs. - CHOICE
- ___ 237. Hatpins including: Rooster - amber, ice blue, green; Flying Bat - purple; Big Butterfly - purple; Butterflies - purple; Moiré Beetle - purple; Top of the Morning - purple; CHOICE
- ___ 238. 21 Glass pcs.- CHOICE
- ___ 239. M'burg Blackberry Wreath ruffled sauce - green - radium
- ___ 240. M'burg Grape Wreath 7" IC shaped bowl - marigold - radium
- ___ 241. Big Basketweave 5" squatty vase - marigold
- ___ 242. Finecut & Roses rose bowl - marigold - nice
- ___ 243. Thin Panels JIP vase - peach opal
- ___ 244. Target 10" vase - blue
- ___ 245. Beaded Shell mug - marigold
- ___ 246. Beaded Shell mug - blue
- ___ 247. Long Thumbprint 6" JIP vase - marigold
- ___ **248. Big Basketweave 9" vase - celest blue - super pretty, very rare**
- ___ 249. Big Basketweave 10" vase - white - nice
- ___ 250. Big Basketweave 10" vase - marigold
- ___ **251. Double Scroll Console set - red - very scarce set**
- ___ **252. Double Scroll console set - aqua teal - neat set**
- ___ **253. Wishbone ftd ruffled bowl - ice blue - very pretty example, rare**
- ___ **254. Three Row Basketweave Open Edge IC shaped bowl - ice green - pretty, scarce**
- ___ **255. Three Row Basketweave Open Edge IC shaped bowl - white - scarce**
- ___ 256. M'burg holly Sprig bon bon - amethyst - radium
- ___ 257. M'burg Holly Sprig bon bon - marigold - radium
- ___ 258. Caroline handled baskets(2) - peach opal - scarce, choice
- ___ 259. N's Thin Rib JIP 8 1/2" vase - green - scarce
- ___ 260. N's Thin Rib JIP 7 1/2" vase - purple - super
- ___ 261. N's Thin Rib JIP 9 1/2" vase - marigold
- ___ **262. Tree Trunk mid-size 12" vase - ice green - very rare, nice**
- ___ **263. Tree Trunk mid-size 12" funeral vase - white - frosty & pretty, scarce**
- ___ **264. Tree Trunk mid-size 13 1/2" funeral vase - green - very pretty, scarce**
- ___ **265. Tree Trunk mid-size 12 1/2" funeral vase - marigold - fantastic, as nice as they get**
- ___ 266. M'burg Strawberry ruffled compote - green - radium, nice
- ___ 267. M'burg Strawberry ruffled compote - amethyst - radium, pretty
- ___ 268. M'burg Strawberry ruffled compote - marigold - radium
- ___ **269. Peacock 9" plate w/BW back - white - super pretty, rare w/back pattern**
- ___ 270. Fishscale & Beads 6" plate - white - nice
- ___ 271. Drapery rose bowls(2) - blue - very nice, choice
- ___ 272. Single Flower dome ftd bowl - peach opal
- ___ 273. Single Flower dome ftd bowl - white - rare color
- ___ **274. Peacock at the Fountain 6 pc. water set - ice blue - very rare & highly desirable set, nice**
- ___ 275. Rustic 9" vases(3) - white - choice
- ___ 276. Rustic 9 1/2" vase - green
- ___ **277. Peacock & Grape ruffled bowl - marigold on moonstone - super pretty, very rare**
- ___ **278. Peacock & Grape ruffled bowl - peach opal - very rare, pretty**
- ___ 279. Peacock & Grape ruffled bowl - lime green opal - scarce color
- ___ 280. Harvest Poppy ruffled compote - purple
- ___ 281. Harvest Poppy ruffled compote - marigold - very pretty
- ___ 282. N's Peacock at Urn IC sauce - ice green - pretty
- ___ 283. N's Peacock at urn IC sauce - white - scarce
- ___ 284. N's Peacock at Urn IC sauces(2) - purple - choice
- ___ 285. N's Peacock at Urn IC sauce - marigold
- ___ 286. Stork & Rushes ruffled 4 pc. punch set - marigold - rare ruffled
- ___ 287. Basketweave Open Edge JIP baskets(2) - red - choice


- ___ 288. Basketweave Open edge JIP baskets(2) - aqua - choice
- ___ 289. Basketweave Open Edge JIP basket - vaseline
- ___ **290. Double Stemmed Rose deep round dome ftd bowl - celest blue - extremely rare whimsy shape, only one I can remember seeing**
- ___ 291. Beaded Bullseye 8" vase - amber - super
- ___ 292. Beaded Bullseye 11" vase - purple - pretty
- ___ 293. Round Up ruffled bowl - peach opal - pretty
- ___ 294. Round Up ruffled bowl - white - pretty
- ___ 295. Cosmos & Cane large ruffled bowl - white
- ___ **296. Waterlily ftd ruffled sauce - reverse amberina opal - very rare & highly desirable**
- ___ 297. Waterlily ftd ruffled sauce - amber
- ___ 298. Waterlily ftd ruffled sauce - green
- ___ 299. M'burg Primrose ruffled bowl - green - satin
- ___ 300. M'burg Primrose ruffled bowl - amethyst - radium & nice
- ___ 301. M'burg Primrose ruffled bowl - marigold - satin
- ___ **302. Tree Trunk 10 1/2" vase - lime green - very rare color, nice**
- ___ **303. Tree Trunk 10 1/2" vase - ice green - very pretty**
- ___ **304. Tree Trunk 11" vase - ice blue - scarce, nice**
- ___ 305. Tree Trunk 11" vase - white - scarce
- ___ 306. Tree Trunk 10" vase - blue - nice
- ___ 307. Tree Trunk 9" vase - marigold - dark, pretty
- ___ 308. Fishnet epergne - purple - scarce, has irid. burns on lily
- ___ 309. Fishnet epergne - peach opal - nice
- ___ 310. Lattice & Points ruffled hat - peach opal - pretty
- ___ 311. Smooth Rays w/Jeweled Heart exterior CRE plates(3) - peach opal - choice
- ___ 312. Wreath Cherry 4 pc. berry set - peach opal - scarce color
- ___ 313. Wreath Cherry 6 pc. berry set - white - nice
- ___ 314. Drapery candy dish - ice green - scarce color, nice
- ___ 315. Drapery candy dish - ice blue - nice
- ___ 316. Drapery candy dish - blue - scarce
- ___ **317. Peacocks PCE bowl w/ribbed back - ice green - very scarce color & nice**
- ___ **318. Peacocks PCE bowl w/plain back - white - rare color & nice**
- ___ 319. Peacocks PCE bowl w/ribbed back - blue - scarce
- ___ 320. Peacocks PCE bowl w/ribbed back - marigold - nice
- ___ 321. M'burg Hanging Cherries 7" IC shaped bowl - amethyst - satin
- ___ 322. M'burg Hanging Cherries IC shaped sauce - green - satin
- ___ 323. M'burg Hanging Cherries 7" IC shaped bowl - marigold - satin
- ___ 324. M'burg Holly Sprig Card Tray shaped bon bon w/54th Anniv. Isaac Benesch & Sons adv. - marigold - satin
- ___ **325. Blossomtime ruffled compote - purple - scarce**
- ___ **326. Blossomtime ruffled compote - marigold - scarce, nice**
- ___ 327. Double Stemmed Rose dome ftd round bowl - white - some might call this one a plate, pretty
- ___ 328. Fenton's Grape & Cable w/Persian Medallion interior fruit bowl - marigold - nice
- ___ 329. M'burg Peacock master berry bowl - amethyst - radium
- ___ 330. Dragon & Lotus deep round nut bowl - blue
- ___ 331. Dragon & Lotus deep round nut bowl - marigold - pretty
- ___ 332. Curved Star 9" vase - blue - nice
- ___ 333. Curved Star 9" vase - marigold - nice
- ___ **334. Peacock at the Fountain butter dish, cvd sugar & spooner - marigold - choice**
- ___ **335. N's Bushel Basket - aqua - scarce color & nice**
- ___ 336. N's Bushel Basket - green
- ___ 337. N's Bushel Baskets(2) - aqua opal - choice
- ___ 338. N's Bushel Baskets(6) - blue - choice
- ___ 339. N's Bushel Basket - white
- ___ 340. N's Bushel Basket - purple
- ___ 341. N's Bushel Baskets(3) - marigold - choice
- ___ 342. Inverted Feather cracker jar - green
- ___ 343. Rustic mid-size 15" vases(2) - white - choice
- ___ 344. Rustic mid-size 15 1/2" vase - amethyst
- ___ 345. Rustic mid-size 15 1/2" vases(2) - blue - choice
- ___ **346. N's Grape & Cable small size fruit bowl - white - frosty & pretty, scarce**
- ___ **347. N's Grape & Cable small size fruit bowl - green - lots of blue irid., could be called emerald**
- ___ **348. N's Grape & Cable small size fruit bowl - blue - very scarce color**
- ___ 349. Folding Fan round compote - blue opal - nice
- ___ 350. Acorn ruffled bowls(2) - amber opal - scarce color, choice
- ___ 351. Acorn ruffled bowls(2) - amber - nice, choice
- ___ 352. Acorn ruffled bowl - amethyst
- ___ 353. Acorn ruffled bowl - black amethyst
- ___ 354. Acorn ruffled bowl - blue
- ___ 355. Acorn ruffled bowls(2) - lime green - choice
- ___ **356. Orange Tree powder jar - amethyst - very scarce color, nice**
- ___ 357. Orange Tree powder jar - marigold
- ___ 358. Stippled Rays ruffled sauces(2) - reverse amberina - choice
- ___ 359. Stippled Rays ruffled sauce - amber
- ___ 360. Petal & Fan crimped edge banana boat shaped 6" dish - peach opal - unusual shape
- ___ 361. Hobstar Band 7 pc. water set - marigold
- ___ **362. Scroll Embossed miniature compote - purple - super**
- ___ 363. Dragon & Lotus IC shaped bowl - reverse amberina - scarce color
- ___ 364. Dragon & Lotus IC shaped bowl - red - silvery
- ___ 365. Basketweave Open Edge round shaped basket - ice green - nice
- ___ 366. Raindrops 3 in 1 edge dome ftd bowls(2) - peach opal - choice
- ___ **367. M'burg Rosalind 10" ruffled bowl - amethyst - satin & super, a real beauty**
- ___ 368. M'burg Rosalind 10" ruffled bowl - marigold - satin
- ___ 369. Blackberry Open Edge basket - green
- ___ 370. Blackberry Open Edge basket - amethyst
- ___ 371. Persian Medallion ruffled bowl - white - scarce & nice
- ___ 372. Scroll Embossed ruffled lg size compote - purple - super
- ___ 373. Scroll Embossed ruffled lg size compote - pastel marigold - pretty
- ___ 374. Basketweave Open Edge lg size ruffled basket - ice green - pretty
- ___ 375. Basketweave Open Edge lg size ruffled basket - white
- ___ 376. Imperial Grape water carafe - purple
- ___ 377. Imperial Grape water carafe - marigold - pretty
- ___ 378. Imperial Grape water carafe - green
- ___ 379. Beads & Flowers 6" plate - peach opal
- ___ **380. Blackberry Spray ruffled hatshape - reverse amberina opal - scarce color, highly desirable**
- ___ **381. Blackberry Spray ruffled hatshape - lime green opal - very rare, maybe rarer than the last, nice**
- ___ **382. Blackberry Spray ruffled hatshapes(2) - aqua opal - both pretty & rare, choice**
- ___ 383. Beaded Cable rose bowl - marigold
- ___ 384. Lattice & Grape tankard water pitcher - marigold
- ___ 385. Stag & Holly spt ftd ruffled bowl - red - very rare, irid. on backside only
- ___ 386. Stag & Holly spt ftd ruffled bowl - blue
- ___ 387. Blackberry Open Edge ruffled hatshapes(2) - red - choice
- ___ 388. Blackberry Open Edge ruffled hatshape - aqua - nice
- ___ 389. M'burg Little Stars 7" ruffled bowl - amethyst - satin, nice
- ___ 390. Scales 7" plate w/crimped edge - peach opal
- ___ 391. Rustic mid-size 9" squatty vase - marigold
- ___ **392. Butterfly & Tulip square shaped bowl - purple - very pretty, a carnival classic**
- ___ **393. N's Thin Rib 9" vase - sapphire - very pretty, highly desirable**

- ___ 394. N's Thin Rib 12" vase - lime green
 ___ 395. N's Thin Rib 11" vase - white
 ___ 396. N's Thin Rib 10 1/2" vase - blue - pretty
 ___ 397. Estate cream & sugars(2pr) - peach opal - choice
 ___ **398. Basketweave Open Edge square shaped basket - ice blue - scarce, pretty**
 ___ **399. Basketweave Open Edge square shaped basket - ice green - nice**
 ___ 400. Basketweave Open Edge square shaped basket - white - also nice
 ___ 401. Cosmos & Cane 7" ruffled bowl w/Headdress interior - white
 ___ 402. N's Flute 20" funeral vase - green - very rare vase, not many this tall
 ___ 403. Imperial Grape wine bottle w/whimsey top - green - very unusual
 ___ 404. Apple Blossom Twigs ruffled bowl - peach opal - nice
 ___ 405. Blackberry Banded ruffled hatshapes(2) - white - choice
 ___ 406. Nautilus whimsey creamer w/Souvenir of Lisbon, NY - peach opal
 ___ 407. Nautilus whimsey sugar bowl - peach opal
 ___ **408. Fashion rose bowl - green - very rare color**
 ___ 409. Fashion rose bowl - marigold
 ___ **410. Hearts & Flowers ruffled bowl w/ribbed back - ice green - scarce & nice**
 ___ 411. Hearts & Flowers ruffled bowl w/ribbed back - ice blue
 ___ 412. Hearts & Flowers ruffled bowl w/ribbed back - white - nice
 ___ **413. Hearts & Flowers ruffled bowls(2) w/ribbed back - marigold - fantastic, unbelievable, as nice as they get! choice**
 ___ 414. Octagon deep round bowl - purple - super
 ___ 415. Intaglio Flower miniature ruffled bowls(2) - peach opal - choice
 ___ 416. Ski Star ruffled sauce - purple - nice
 ___ 417. Hobstar Fruit small ruffled bowl - marigold on milkglass - scarce color
 ___ 418. Hobstar Fruit small ruffled bowl - peach opal
 ___ 419. M'burg Holly Sprig crimped edge 8" bowl - amethyst - radium & fantastic!
 ___ 420. Butterfly & Tulip deep round bowl - marigold
 ___ **421. Drapery 7 1/2" vase - ice green - nice**
 ___ 422. Drapery 7" vase - ice blue - nice
 ___ 423. Drapery 8 1/2" vase - white - frosty, pretty
 ___ 424. Absentee Leaf Rays nappy - peach opal - scarce
 ___ 425. Flowers & Frames tri-cornered crimped edge bowl - purple - pretty
 ___ 426. Lined Lattice 10" vases(2) - white - choice
 ___ 427. Lined Lattice 9 1/2" vase - purple
 ___ **428. Stippled Grape & Cable cracker jar - marigold - scarce stippled**
 ___ 429. Fanciful ruffled bowl - white - pretty
 ___ 430. Three Fruits 9" plate w/plain back - purple
 ___ 431. Strawberry PCE bowl w/plain back - pastel marigold - very pretty
 ___ 432. Persian Garden 11" ruffled bowl - peach opal - nice
 ___ 433. Windflower hddld nappy - amethyst
 ___ **434. Grape & Cable banana boat - white - frosty & nice**
 ___ 435. Grape & Cable banana boat - green - nice
 ___ 436. Grape & Cable banana boat - marigold - pretty
 ___ 437. Corinth 9" vase - blue opal - fantastic opal
 ___ 438. Imperial Grape water pitcher - marigold
 ___ **439. M'burg Grape Leaves crimped edge ruffled bowl - marigold - radium & very rare, nice**
 ___ 440. Scales 3 sides up dish - peach opal
 ___ **441. Leaf & Beads rose bowl - white - frosty & pretty**
 ___ 442. Leaf & Beads rose bowl - aqua opal - butterscotch
 ___ 443. Leaf & Beads rose bowl - green - has rayed interior
 ___ 444. Leaf & Beads rose bowl - marigold - has rayed interior
 ___ **445. Rose Show 9" plate - amethyst - super pretty!**
 ___ 446. Soutache dome ftd round bowl - peach opal
 ___ 447. Fern square shaped crimped edge hatshape - marigold on milkglass
 ___ 448. Fine Rib 9 1/2" vase - red - scarce
 ___ 449. Fine Rib 9 1/2" vase - lime green
 ___ 450. Fine Rib 9 1/2" vase - aqua
 ___ 451. Fine Rib 9 1/2" vase - powder blue
 ___ 452. Persian Medallion hair receiver - white - pretty
 ___ 453. Persian Medallion rose bowl - white
 ___ 454. Ski Star dome ftd handgrip plate - peach opal
 ___ 455. Enameled Cherries & Little Flowers 7 pc. water set - blue
 ___ 456. Three Fruits ruffled bowl w/plain back - green - pretty
 ___ 457. Honeycomb rose bowl - peach opal - nice
 ___ 458. Imperial Grape ruffled bowl - purple - pretty
 ___ **459. Singing Birds mug - white - nice**
 ___ 460. Singing Birds mug - lavender - pretty
 ___ 461. Singing Birds mug - purple
 ___ 462. Singing Birds mug - blue
 ___ **463. Diamond Rib 18 1/2" funeral vase - marigold - super pretty big massive piece!**
 ___ **464. Diamond Rib 19" funeral vase - green - also extremely rare, massive & wonderful!**
 ___ 465. Little Fishes ftd ruffled sauce - aqua
 ___ 466. Persian Garden lg size IC shaped bowl - white - frosty, pretty
 ___ 467. Persian Garden IC sauces(4) - white - choice
 ___ 468. Sailboats round sauce - red - pretty, scarce
 ___ 469. Fern ruffled compote - purple
 ___ **470. Grape & Cable powder jar bottom - aqua opal - super pretty, who has the lid?**
 ___ 471. Grape & Cable powder jar bottom - ice green
 ___ 472. Grape & Cable powder jar bottom - ice blue
 ___ 473. Grape & Cable powder jar bottom - white
 ___ 474. Stippled Grape & Cable powder jar - blue base, purple top - minor nick on top edge
 ___ 475. Basketweave Open Edge ruffled baskets(2) - red - choice
 ___ 476. Basketweave Open Edge ruffled basket - aqua
 ___ 477. Basketweave Open Edge ruffled basket - green
 ___ 478. Basketweave Open Edge ruffled baskets(2) - black amethyst - choice
 ___ 479. Basketweave Open Edge ruffled baskets(2) - odd green - choice
 ___ 480. Basketweave Open Edge ruffled basket - amethyst
 ___ 481. Basketweave Open Edge ruffled basket - powder blue w/marigold overlay
 ___ 482. Basketweave Open Edge ruffled baskets(3) - lime green w/marigold overlay - choice
 ___ 483. Grape Arbor 7 pc. water set - marigold - nice
 ___ 484. Blackberry Spray JIP CRE hatshape - reverse amberina
 ___ 485. Blackberry Spray JIP CRE hatshape - red
 ___ 486. Apple Blossom Twigs IC shaped bowl - peach opal - nice
 ___ 487. Lined Lattice 5" squatty vases(2) - peach opal - choice
 ___ **488. Hearts & Flowers ruffled compote - ice blue - nice**
 ___ **489. Hearts & Flowers ruffled compote - blue - electric & super**
 ___ 490. Hearts & Flowers ruffled compote - amethyst - scarce & nice
 ___ 491. Hearts & Flowers ruffled compote - aqua opal - butterscotch, nice
 ___ 492. Hearts & Flowers ruffled compote - white - nice
 ___ 493. Hearts & Flowers ruffled compotes(2) - marigold - choice
 ___ 494. Carolina Dogwood ruffled bowl - blue opal - scarce
 ___ 495. N's Eight Sided bushel basket - ice green - scarce, nice
 ___ 496. N's Eight Sided bushel basket - white
 ___ 497. N's Eight Sided bushel basket - blue - nice
 ___ 498. Apple Blossom Twigs ruffled bowl w/smooth edge - peach opal
 ___ **499. Stippled Three Fruits spt ftd ruffled bowl - aqua opal - scarce & very nice**
 ___ 500. Stippled Three Fruits spt ftd ruffled bowl - white - pretty, scarce
 ___ 501. Three Fruits spt ftd ruffled bowl - marigold

- ___ 502. **Orange Tree standard size mug - green - scarce color, a bit silvery**
- ___ 503. Orange Tree standard size mug - red - nice
- ___ 504. Orange Tree standard size mug - purple - very scarce color
- ___ 505. Orange Tree standard size mug - lime green w/marigold overlay
- ___ 506. **Rose Show ruffled bowl - purple - couple manufacture splits on edge but made that way**
- ___ 507. **Rose Show ruffled bowl - marigold - scarce & very pretty**
- ___ 508. Drapery Variant 8 1/2" vase - blue
- ___ 509. Drapery Variant 8" vase - marigold
- ___ 510. Persian Garden 6" plate w/Pool of Pearls back - white - nice
- ___ 511. Thin Panels 7 1/2" JIP vase - peach opal
- ___ 512. **Peacocks ruffled bowl w/ribbed back - white - scarce, nice**
- ___ 513. Peacocks ruffled bowl w/ribbed back - purple - scarce
- ___ 514. Orange Tree IC shaped bowl - white
- ___ 515. Dragon & Lotus ruffled bowl - peach opal - scarce color
- ___ 516. Dragon & Lotus ruffled bowl - amethyst - pretty
- ___ 517. Blackberry Open Edge 2 sided up basket - white - scarce
- ___ 518. Blackberry Open Edge 2 sided up basket - powder blue
- ___ 519. **Embroidered Mums ruffled bowls w/ribbed backs(2) - blue - both nice, choice**
- ___ 520. **Embroidered Mums ruffled bowl - marigold - super pretty**
- ___ 521. Orange Tree ruffled compote - green - scarce color
- ___ 522. Orange Tree ruffled compote - marigold
- ___ 523. **Stippled Rays ruffled compote - celest blue - very pretty, scarce & desirable**
- ___ 524. Grapevine Lattice 6" plate - peach opal - scarce color
- ___ 525. Peach cvd sugar bowl - white - scarce
- ___ 526. M'burg Zig Zag 3 in 1 edge bowl - amethyst - satin
- ___ 527. Fenton's Fine Rib 13" vase - vaseline - neat vase
- ___ 528. Fenton's Fine Rib 11" vase - amber - very scarce color
- ___ 529. Fenton's Grape & Cable 7" ruffled bowl - red - scarce, nice
- ___ 530. Good Luck ruffled bowl w/ribbed back - marigold - nice
- ___ 531. Concave Flute JIP 9" vase - marigold on moonstone - scarce vase
- ___ 532. **Horse Medallion ftd nut bowl - red - scarce & very nice**
- ___ 533. **Horse Medallion ftd nut bowl - amethyst - scarce color, pretty**
- ___ 534. Horse Medallion ftd nut bowl - pink base glass w/marigold overlay
- ___ 535. Smooth Panels 10" large vase w/Imperial Cross Marks - marigold - glass is frosted on outside, very unusual
- ___ 536. Ski Star dome ftd tri-cornered bowl - peach opal
- ___ 537. April Showers 11 1/2" vase - white - scarce color
- ___ 538. **Stippled Grape & Cable PCE bowl w/ribbed back - ice blue - rare & nice**
- ___ 539. Aurora Pearls crimped edge ruffled brides basket - peach opal - scarce
- ___ 540. Circle Scroll 8 1/2" vase - purple - nice
- ___ 541. Circle Scroll 6 3/4" vase - marigold - scarce
- ___ 542. Acanthus chop plate - marigold - nice
- ___ 543. **Pinched Swirl 4 1/2" vase - peach opal - has opalescent stripping throughout vase, neat**
- ___ 544. Grape & Cable pin tray - purple - nice
- ___ 545. Grape & Cable pin tray - marigold - nice
- ___ 546. N's Wide Rib mid-size 10 1/2" vase - green
- ___ 547. M'burg Whirling Leaves tri-cornered bowl - green - radium & nice
- ___ 548. Egyptian Luster candlesticks - red - extremely rare
- ___ 549. Golden Harvest 6 pc. wine set - marigold
- ___ 550. **Tornado lg size vase - green - nice**
- ___ 551. **Tornado lg size vase - marigold - scarce**
- ___ 552. Wild Blackberry ruffled bowl - green
- ___ 553. Four Flowers chop plate w/Soda Gold back - peach opal - scarce, nice
- ___ 554. Four Flowers 6" plates(3) - peach opal - choice
- ___ 555. Grape & Cable bon bon - blue - electric, super
- ___ 556. File whimsey vase - marigold - super neat shape
- ___ 557. **Diamond Point 7 1/2" squatty vase - ice green - super pretty, quite scarce**
- ___ 558. Diamond Point 7" squatty vase - white - frosty & super, scarce
- ___ 559. Round Up IC shaped bowl - peach opal - super pretty
- ___ 560. Round Up IC shaped bowl - white - pretty
- ___ 561. Poinsettia milk pitcher - marigold
- ___ 562. Blackberry Spray 2 sides up hat - amethyst opal - nice
- ___ 563. Petal & Fan 6" crimped edge plate - peach opal
- ___ 564. **Peacocks 9" plate w/ribbed back - ice green - scarce & desirable**
- ___ 565. Peacocks 9" plate w/ribbed back - white - pretty
- ___ 566. Peacocks 9" plate w/ribbed back - marigold - nice
- ___ 567. Horse Medallion JIP ftd bowl - blue - nice
- ___ 568. **Strawberry epergne - purple - very hard to find, super nice**
- ___ 569. Diamond Rib 11 1/2" vase - white - scarce color
- ___ 570. Strawberry bon bon - amber - scarce color
- ___ 571. Strawberry bon bons(2) - reverse amberina - scarce, choice
- ___ 572. Strawberry bon bon - lime green opal - very rare color
- ___ 573. **Peacock at the Fountain 8 pc. punch set - purple - scarce & pretty**
- ___ 574. Concave Flute 7 1/2" squatty vase - amethyst - very pretty
- ___ 575. **Three Row Open Edge Basketweave 2 sides up basket - celest blue - extremely rare color, nice**
- ___ 576. Three Row Open Edge Basketweave 2 sides up basket - white - frosty & stretchy
- ___ 577. Acorn deep round bowl - red - pretty example
- ___ 578. Acorn deep round bowl - red slag - very slagy
- ___ 579. Acorn deep round bowl - marigold on moonstone - scarce
- ___ 580. Soutache dome ftd crimped edge bowl - peach opal
- ___ 581. Peacock at the Fountain master berry bowl & 1 indiv. berry - white - scarce & nice
- ___ 582. Unusual pair of candlesticks - light marigold - look like Heisey
- ___ 583. Holly ruffled hatshape - red
- ___ 584. Holly ruffled hatshape - marigold on moonstone
- ___ 585. **Morning Glory 17 1/2" funeral vase - smoke - very scarce & nice**
- ___ 586. **Morning Glory 17" funeral vase - green - scarce**
- ___ 587. **Morning Glory 17" funeral vase - marigold - dark & super**
- ___ 588. M'burg Holly Spring Variant 6" deep crimped edge bowl - marigold - radium, pretty, has 4-leaf clover in bottom
- ___ 589. **Poinsettia & Lattice ftd ruffled bowl - purple - scarce, nice**
- ___ 590. M'burg Holly Sprig tri-cornered nappy - marigold - satin
- ___ 591. **Orange Tree ruffled bowl - red - extremely rare bowl, silvery**
- ___ 592. Orange Tree ruffled bowl - white
- ___ 593. Western Thistle 5" vase - marigold
- ___ 594. **Orange Tree shaving mug - red slag - very slagy, very scarce**
- ___ 595. Orange Tree shaving mug - powder blue
- ___ 596. Imperial Grape 4 pc. wine set - purple
- ___ 597. Vintage small size epergne - blue
- ___ 598. Vintage small size epergne - marigold
- ___ 599. John H Brand Adv. Basketweave Open edge 2-sides up basket - marigold
- ___ 600. **N's Corn vase w/plain base - green - scarce, nice**
- ___ 601. **N's Corn vase w/plain base - purple - scarce & nice**
- ___ 602. N's Corn vase w/stalk base - ice green- scarce
- ___ 603. N's Corn vase w/plain base - white - scarce
- ___ 604. M'burg Mayan IC shaped bowl - green - radium
- ___ 605. Wishbone & Spades 6" plate - peach opal - very nice

606. Derby 8" vase - marigold
607. **Stag & Holly lg size ftd ruffled bowl - green - super pretty & very rare, great bowl!**
608. Six Petal flat ruffled bowl - peach opal
609. Grape & Cable IC sauces(6) - ice green - scarce, choice
610. Grape & Cable IC sauces(5) - white - choice
611. Persian Medallion round sauce - red - very scarce item
612. Tree Trunk 6 1/2" squatty vase - blue - scarce & desirable
613. Tree Trunk 6 1/2" squatty vase - amethyst
614. Flowering Dill JIP CRE hat - marigold on moonstone
615. Nippon PCE bowl w/BW back - ice blue - nice
616. Nippon PCE bowl w/ribbed back - white - frosty & pretty
617. M'burg Grape Wreath Variant IC sauce - amethyst - radium & pretty
618. **Heavy Webb deep round bowl - peach opal - very rare & highly desirable**
619. Fenton's Peacock at Urn ruffled compote - white - scarce color
620. Fenton's Peacock at Urn ruffled compote - lime green w/marigold overlay
621. Fenton's Peacock at Urn ruffled compote - blue
622. Fenton's Peacock at Urn ruffled compote - powder blue w/marigold overlay
623. Floral & Grape 4 pc. water set - white - scarce & nice
624. Four Flowers 4 pc. ruffled berry set - peach opal
625. Luster Rose ftd fruit bowl red - extremely rare & highly desirable
626. Thin Rib & Drape 5" mini vase - marigold
627. Basketweave Open Edge lg size IC shaped bowl - ice green - scarce
628. Inverted Strawberry powder jar - green
629. Dugan's Heavy Grape lg ruffled bowl - peach opal - scarce item
630. Lattice & Points 8" vase - white
631. **M'burg Holly Sprig ruffled compote - green - extremely rare compote, only a couple known**
632. Flowers & Frames dome ftd ruffled bowls(2) - peach opal - choice
633. Vintage 7" ruffled bowl - aqua opal - very rare & nice
634. Ripple 10" vases(2) - aqua teal - choice
635. **Stippled Petal hdd basket - peach opal - scarce basket**
636. Inverted Strawberry base to sugar bowl - blue - rare color
637. Raspberry ruffled compote - purple
638. **M'burg Seacoast pin tray - amethyst - scarce & highly desirable, nice**
639. Sunflower & Diamonds vase - marigold
640. Stag & Holly giant rose bowl - marigold - scarce
641. Amaryllis tri-cornered miniature compote - purple - nice
642. **Peacock at the Fountain fruit bowl - purple - very pretty, scarce**
643. Garden Path Variant ruffled sauce - peach opal
644. Palm Beach whimsey 4" vase - white - scarce
645. Blackberry Spray square shaped hat - red - scarce
646. **N's Peacock at Urn master IC bowl - purple - super example!**
647. **N's Peacock at Urn master IC bowl - marigold - a beauty, scarce**
648. M'burg Holly Sprig Variant 8" IC shaped bowl - marigold - radium
649. Persian Medallion bon bon - red - scarce & desirable
650. M'burg Strawberry tri-cornered 7" bowl - marigold - radium
651. **M'burg Seaweed 3 in 1 edge bowl - marigold - satin & pretty, quite rare**
652. Stippled Rays IC shaped sauce - reverse amberina - nice
653. Cosmos & Cane punch bowl shape compote - honey amber
654. **Homestead chop plate - purple - absolutely super, great even irid., a dandy!**
655. Heavy Grape small round bowl - smoke
656. Smooth Rays w/Jeweled Heart back crimped edge hdd basket - peach opal - rare & cute
657. Diamond Point 10 1/2" vase - white - scarce
658. Diamond Point 9" vases (2) - green - choice
659. **Leaf Chain 7" ruffled bowl - ice green - extremely rare & super pretty irid.!**
660. Leaf Chain 7" ruffled bowl - red - nice example, scarce
661. Single Flower 3 in 1 edge bowl - purple - very pretty, rare in this color
662. Wide Rib 4 1/2" squatty vases(2) - peach opal - choice, neat
663. Basketweave Open Edge 2 sides up basket - red - scarce
664. Basketweave Open Edge 2 sides up basket - ice green - nice
665. Basketweave Open Edge 2 sides up basket - blue
666. **Panther ftd ruffled sauce - red - super example, rare**
667. M'burg Strawberry Wreath Variant 8" ruffled bowl - amethyst - radium and super
668. Sailboats ruffled sauce - red - very nice & scarce
669. Amaryllis ftd plate - marigold - nice
670. Petal & Fan ruffled sauce - white
671. Imperial Grape 6" plate - purple - nice
672. **Holly ruffled bowl - red - scarce & highly desirable**
673. Holly ruffled bowl - white - nice
674. Four Pillars 11" vases(2) - aqua opal - one is whimsied at top, choice
675. **Banded Grape & Cable dresser tray - purple - scarce, nice**
676. Grape & Cable dresser tray - marigold - very nice
677. Daisy bon bon - blue - silvery but scarce
678. **M'burg Bullseye & Loop 11" vase - amethyst - scarce & nice**
679. Kittens toothpick - blue
680. Kittens toothpick - marigold
681. **Imperial Grape water pitcher - purple - absolutely super**
682. Inverted Strawberry creamer - amethyst
683. **Formal JIP shaped vase - marigold - very pretty example, rare**
684. Stippled Rays w/Scale Band exterior 10" ruffled bowl - white
685. Wreathed Cherry water pitcher - white - has gold leaves, scarce
686. Wreathed Cherry tumbler - white
687. Blackberry Open Edge square shaped basket - red - nice
688. Louisa ftd ruffled bowl - peach opal - scarce color
689. Dandelion mug - aqua opal - nice
690. Holly IC shaped bowl - amethyst
691. Peacock & Grape IC shaped bowl - red - very scarce & nice
692. Cherry Circles 10" IC shaped bowl - white - pretty
693. **Holly ruffled compote - red - scarce, nice**
694. Holly ruffled compote - lime green w/marigold overlay
695. Holly ruffled compote - vaseline w/marigold overlay
696. **Stippled Peacock at Urn ruffled bowl w/ribbed back - purple - very pretty & scarce**
697. Stippled Peacocks ruffled bowl w/ribbed back - marigold - scarce
698. Border Plants dome ftd ruffled deep bowl - peach opal
699. Palm Beach whimsey rose bowls w/Gooseberry interiors(2) - white - choice
700. Target 5" squatty vase - white - very pretty, neat
701. Double Stemmed Rose dome ftd ruffled bowl - white - pretty
702. Peacock at the Fountain ruffled compote - white - scarce & desirable
703. Stork & Rushes mug - amethyst - super pretty
704. Grape & Cable turned in centerpiece bowl - white - scarce & highly desirable

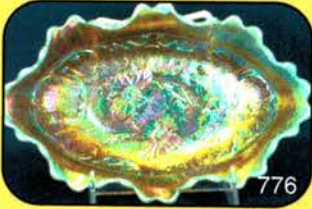
705. Miniature Morning Glory 5" vases(2) - purple - one has applied metal on side, choice
706. Miniature Morning Glory 6" vase - lavender
707. Miniature Morning Glory 6" vases(2) - smoke - choice
708. Miniature Morning Glory 4 1/4" & 6" vases(2) - green - choice
709. Miniature Morning Glory 5" vase - marigold - has wide mouth
- 710. Vintage fernery - red - scarce & nice**
711. Pansy ruffled bowl - lavender - pretty
- 712. Loganberry vase - amber - scarce color**
713. Dahlia creamers(2) - white - one has blue flower, choice
714. Bells & Bead tri-cornered crimped edge dish - peach opal - nice
715. Three Row Open Edge Basketweave square shaped bowl - white - scarce
716. Fine Rib 15" vase - amber - scarce color
717. Windmill milk pitcher - green - scarce color
- 718. Holly goblet shaped compotes - red - scarce, nice**
719. Orange Tree breakfast set - white - scarce color
720. Nautilus 6" vase - purple - scarce, nice
721. Nautilus 8" vase - marigold - nice
722. Flowers & Frames dome ftd deep ruffled bowl - peach opal
723. M'burg Peacock at Urn 10" 3 in 1 edge bowl - green - satin & scarce
724. Smooth Panels 11" vase - smoke
725. Grape & Cable cologne bottles w/stoppers(2) - 1 purple, 1 amethyst, choice
- 726. Peacocks 9" plate w/plain back - white - scarce & very pretty**
727. Fishscale & Beads low ruffled bowl - peach opal
728. Apple Blossom Twigs 3 in 1 edge bowl - peach opal
729. Apple Blossom Twigs 3 in 1 edge bowl - white
730. Luster Rose fernery - amberina - very rare color for these
731. Ftd Lined Lattice 12" vase - marigold
732. Fruits & Flowers 10" ruffled bowl - ice green - scarce, very pretty
733. Scales crimped edge deep round sauce - peach opal
734. Flowers & Spades ruffled bowl - peach opal - rare pattern
735. N's Flute mid-size 15" vase - marigold
- 736. Dragon & Strawberry IC shaped bowl - marigold - pretty, scarce**
737. Acorn IC shaped bowl - green
738. Acorn IC shaped bowl - vaseline w/marigold overlay
- 739. Wild Strawberry 10" ruffled bowl w/BW back - white - very scarce, highly desirable**
740. Rose Spray JIP compote - ice green
741. Rose Spray JIP compote - white
742. M'burg Hobnail Swirl 10" vase - amethyst - pretty
743. Fenton's Grape Cable ruffled sauce w/Persian Medallion interior - marigold - scarce
744. Parlor Panels 6 1/2" squatty vase - smoke - super
745. M'burg Peacock Tail Variant ruffled compote - amethyst - radium & super
- 746. Daisy & Drape flared out vase - aqua opal - scarce**
747. Daisy & Drape turned in vase - white - nice
748. M'burg Holly Sprig crimped edge 8" bowl - amethyst - radium & fantastic
749. Grape & Gothic Arches 5 pc. water set - marigold - nice
750. Raindrops dome ftd deep ruffled bowl - peach opal
- 751. Double Loop chalice - aqua opal - very nice**
752. Cherry Chain 10" ruffled bowl - white - pretty
753. Fisherman's mug - purple - nice
754. Fisherman's mug - marigold
755. Basketweave Open Edge lg size 2 sides up basket - celest blue - nice
756. Star of David ruffled bowl - purple
757. Thin Panel 7" vase - peach opal
758. Zippered Heart master berry bowl - purple - pretty
- 759. Hearts & Flowers 9" plate w/ribbed back - purple - very rare & highly desirable**
760. Smooth Panels 5" squatty vase - marigold on milkglass
761. M'burg Cosmos ruffled sauce - green - radium, scarce ruffled
762. Dugan Cherries ruffled bowl - peach opal
763. Cosmos & Cane spooner - white
764. Three Row Open Edge basketweave ruffled bowl - white - scarce
765. N's Thin Rib 6" squatty vase - green
- 766. Stippled Peacocks 9" plate w/ribbed back - marigold - nice**
767. Beaded Basket - white - scarce color
768. Heron mug - purple
769. Leaf Columns 10" vase - purple
770. Captive Rose crimped compote - marigold
771. M'burg Peacock berry bowl - amethyst - satin
772. Horse Medallion 7" plate - marigold
773. Fruits & Flowers bon bon - blue - super
774. Dogwood IC shaped bowl - peach opal
775. Daisy Wreath IC shaped bowl - peach opal
- 776. Poppy pickle dish - aqua opal - super rare & very pretty**
- 777. Poppy pickle dish - ice blue - a real dandy**
- 778. Poppy pickle dish - white - very nice**
779. Poppy pickle dish - blue - electric highlights
780. Poppy pickle dish - marigold
781. Grape Arbor ruffled hatshape - white
- 782. Stippled Rays round compote - ice green - scarce**
783. Three Fruits dome ftd ruffled bowl - white - scarce
784. Persian Medallion ruffled compote - white - scarce
785. Leaf Columns 7" squatty vase - marigold
786. Fenton's Grape & Cable deep round bowl - white - scarce color
- 787. N's Thin Rib mid-size 14 1/2" vase - sapphire - fantastic, a real beauty, Rare!**
- 788. N's Thin Rib mid-size 14" vase - vaseline - extremely rare & super**
789. N's Thin Rib mid-size 13" vase - white - scarce
790. N's Thin Rib mid-size 13 1/2" vase - purple
791. N's Thin Rib mid-size 13" vase - marigold - pretty
792. Kittens cereal bowl - powder blue w/marigold overlay - nice
793. Stippled Rays deep round sauce - white - scarce
794. M'burg Holly Whirl ruffled bowl - amethyst - radium & nice
795. Dahlia ftd berry bowl - white w/red flowers
796. Flute toothpick - purple
797. Flute toothpick - marigold
798. Grouping of Glass w/slight damage including: N's Bushel Basket - sapphire - chip on top edge; Orange Tree hatpin - marigold - chip on top; Folding Fan round compote - peach opal - chip on base; Fine Rib 10" vase - amber opal - burst in base; Hearts & Flowers ruffled compote - white - pinpoint on base; Blackberry Spray 2 sides up hat - amethyst opal - heat check in base; Wishbone ftd ruffled bowl - marigold - chip on edge; M'burg Whirling Leaves ruffled bowl - marigold - chip on edge; M'burg Fleur Dis Lis dome ftd 3 in 1 edge bowl - amethyst - chip on base - CHOICE
799. Miniature Morning Glory 7" vase - white
800. Peach berry bowl - white
801. Grape Delight ftd nut bowl - white
802. Folding Fan ruffled compote - marigold on milkglass
803. Star & File 7 pc. wine set - marigold



Seeck Auctions

P.O. Box 377
Mason City, Iowa 50402

PRESORTED
FIRST-CLASS MAIL
U.S. POSTAGE PAID
MINNEAPOLIS, MN
PERMIT NO. 28534



*****AUTO**MIXED AADC 553

Lee Markley
PO Box 306
Mentone, IN 46539-0306

