



Lot # 35



Lot # 20



Lot # 200



Lot # 105



Lot # 75



Lot # 62

# BURNS

AUCTION SERVICE

## 2005 Great Lakes Carnival

### "Glass Bash" Auction

10 a.m. Saturday,  
November 5, 2005

(Previews Friday Evening & 8 am Saturday)

at the **Best Western - Midway Hotel**

7711 W. Saginaw Hwy., Lansing, MI

**517-627-8471**

**877-772-6100**

Exit 93B off I-96

I need to travel more (even with the ridiculous gas prices!) and I always look forward to this road trip and travel my way to good ole Lansing Michigan. This time of the Fall brings us here to the Great Lakes Carnival Glass Clubs' Annual "Glass Bash" Jamboree. Each year the crowd gets a bit bigger and the Hosts' are some of the best people you could ever meet! So if you're gonna spend gas cash on a Road Trip - this will be one to make and attend an excellent auction to boot!

This year's selection of glass is the Cream of the Crop of the Gehlbach Collection from Indiana. These folks sure did have a bunch of glass & although it's a big one man job going through all those 1200 items - it sure was fun putting pieces to the auction puzzles together - and this was the end result; and I'd hoped it would be of interest to a bunch of you folk - we'll soon see!

This auction is only one part of the "Glass Bash" and Mark, Max, and the rest want you to feel free to join them for the activities. We hope to see ya there!

The Best Western - Midway has been Host to this event for a number years. The motel is located off exit 93B of I-96 outside of the State Capital. To make reservations you can call the motel direct at 517-627-8471 or 877-772-6100. For further information on the Glass Bash call Maxine Burkhardt at 517-627-7558. Hope to see ya there!

Mail bids, phone bids, etc. are due by Friday evening November 4, 2005.

— BURNS AUCTION SERVICE —

Tom Burns  
P.O. Box 608  
Bath, New York 14810  
(607) 346-5290

Bill Richards  
44 Water Street, Poland OH 44514  
(330) 757-2001  
FAX (330) 757-4917

Bill Richards III  
36 Water Street  
Poland, OH 44514  
(330) 757-2740

Mail Bids honored under the following conditions:

1. No deposit required. Bidders will take full responsibility to honor any and all bids we execute for them. Payment in full plus postage and handling required after notification and before we ship any item to them.
2. Items are bid on in perfect condition with average or above average iridescence OR as listed in the brochures. Bids will not be carried out when damage on an item has been found during the auction. **PEOPLE PRESENT AT THE AUCTION ARE RESPONSIBLE FOR FINDING ANY PINHEADS, WEAR, SPOTTINESS, MANUFACTURER'S DEFECTS OR ANY OTHER MINOR FLAWS, ETC.**
3. Successful bidders will be notified by collect call from the auctioneer **SO BE SURE TO INCLUDE PHONE NUMBER.**
4. Phone inquiries about the glass or any other questions are welcome.
5. If you have some other person at the auction bidding for you, they must pay for the item before taking it.
6. Any terms or conditions given the day of the auction will supersede any previously published information.
7. Mail, e-mail, fax and phone bids are due by Friday, November 4, 2005

For photos of just about every item in every auction visit our website at:

<http://www.billrichardsauctioneers.com>

- |        |     |  |        |     |  |
|--------|-----|--|--------|-----|--|
| 35     | 1.  | Fenton Pastel Swan Master Salt - Vaseline Opal. (not carnival; very desirable color)                                       | 85     | 17. | 8 3/4" M'burg Holly Sprig 6 Ruffled Crimped Edge Bowl - Mari. (radium & very attractive)   |
| 25     | 2.  | 2 1/8" Tall Fostoria America Toothpick Holder - Lt. Mari. (rare item w/ a light bright irid.)                              | 37 1/2 | 18. | 8 1/4" M'burg Holly Sprig 6 Ruffled Bowl - Mari. (radium & nice)   |
| 15     | 3.  | (?) Bulbous Based Perfume Bottle & Stopper - Lt. Mari. (unusual; scarce)   | 70     | 19. | 9 1/2" M'burg Holly Whirl 6 Ruffled Bowl - Amyth. (radium w/ super irid. & really nice color)  |
| 95     | 4.  | European Heavy Vine Perfume Bottle & Stopper - Lt. Mari. (very scarce w/ nice color)                                       | 950    | 20. | <b>M'BURG HOBSTAR &amp; FEATHER GIANT FTD. ROSE BOWL - PURP. (VERY RARE &amp; VERY DESIRABLE; SUPER COLOR &amp; IRID.)</b>           |
| 65 x 2 | 5.  | (2) European Perfume Bottles & Stoppers - Dk. Mari. (very scarce; selling choice; nice)                                    | 1100   | 21. | <b>M'BURG HOBSTAR &amp; FEATHER TULIP TOP PUNCH BOWL W/ 6 CUPS - PURP. (RARE, RARE ITEM; SATINY &amp; NEEDS A BASE; REALLY NICE)</b> |
| 55     | 6.  | Contemporary Figural Turtle & Shell Night Light - Dark (odd item w/ an iridized shell; metal base)                         | 85, 15 | 22. | (2) 8 1/8" M'burg Mayan I.C. Shaped Bowls - Green (radium; selling choice)   |
| 20     | 7.  | (?) Cowboy Hat Whimsey - Blue (odd whimsey; unusual)   | 10     | 23. | 6 1/4" M'burg Cosmos I.C. Shaped Bowl - Green (radium) *   |
| 35     | 8.  | 3" Tall Holm Spray Deep Style Perfume Atomizer - Mari. (scarce item)   | 90     | 24. | M'burg Boutonniere Stemmed 6 Ruffled Compote - Amyth. - (very scarce; satiny)  |
| 85     | 9.  | 10 1/2" European Pods & Posies low 8 Ruffled Bowl w/ manuf. ground base - Purp. (very scarce; nice & satiny)               | 300    | 25. | <b>M'BURG LEAF &amp; LITTLE FLOWERS MINIATURE 6 RUFFLED COMPOTE - MARI. (RADIUM &amp; RARE; VERY DESIRABLE &amp; NICE)</b>           |
| 625    | 10. | <b>EUROPEAN DRAPERY VARIANT 6 PC. WINE SET - DK. MARI. (VERY RARE SET W/ SUPER COLOR &amp; IRID.; REPAIR ON ONE GLASS)</b> | 45     | 26. | M'burg Peacock Tail Variant 6 Ruffled Stemmed Compote - Amyth. (satiny & scarce)   |
| 250    | 11. | European Berry Band (and Ribs) 7 pc. Wine Set - Mari. (rare & underpriced set; very attractive)                            | 325    | 27. | <b>6" M'BURG ISSAC BENESCH 6 RUFFLED ADVERTISING BOWL - AMYTH. (RARE &amp; DESIRABLE; SATINY &amp; NICE)</b>                         |
| 10     | 12. | European Split Diamond Creamer & Open Sugar - Mari. (odd sugar; scarce)  | 150    | 28. | 9 5/8" M'burg Nesting Swan 6 Ruffled Bowl - Amyth. (very scarce; nice satiny finish)   |
| 5      | 13. | 4 1/2" Tall X 5" Diameter European Split Diamond ftd. Compote - Mari. (odd item; very scarce)                              | 115    | 29. | 9 3/4" M'burg Nesting Swan 6 Ruffled Bowl - Mari. (very scarce; satiny & desirable)  |
| 25     | 14. | Sowerby Covered Hen Butter Dish - Mari. (desirable; nice color & irid.) <i>covered star</i>                                |        |     |  |
| 20     | 15. | European Venetian Flower Arranger w/ Frog - Mari. (very scarce; nice dark color & irid.)                                   |        |     |  |
| 5      | 16. | European Milady Covered Powder Jar - Mari. (very scarce; nice color & irid.) <i>no top</i>                                 |        |     |  |

- 300 30. M'BURG ZIG ZAG TRI-CORNERED CRIMPED EDGE BOWL - GREEN (RARE & VERY DESIRABLE; RADIUM W/ A SUPER SHAPE)
- 350 31. 9" M'BURG ZIG ZAG ROUND FLARED BOWL - AMYTH. (RARE SHAPE; SUPER RADIUM & REALLY NICE)
- 75 32. 9 3/4" M'burg Zig Zag 6 Ruffled Bowl w/ 3 in 1 Edge - Lt. Mari. (very scarce w/ a light, bright radium finish)
- 85 33. 8 3/4" M'BURG FLEUR DE LEI DOMED I.C. SHAPED BOWL - AMYTH. (RARE & RADIUM; SUPER COLOR & SUPER SHAPE)
- 70 34. 9 1/2" M'burg Whirling Leaves 6 Ruffled Bowl - Dk. Mari. (radium & very desirable; nice)
- 1100 35. 9 1/2" TALL M'BURG OHIO STAR VASE - PURP. (RARE & VERY DESIRABLE W/ A STRONG SATINY FINISH)
- 60 36. 10" Tall M'burg Hobnail Swirl Swung Vase - Green (rare & desirable; peeling on edge)
- 200 37. M'burg Swirl Hobnail Rose Bowl - Dk. Mari. (dark & a really impressive example; nice)
- 130 38. 9 3/4" M'burg Primrose 6 Ruffled Bowl - Amyth. (satiny finish)
- 30 39. 9 1/2" M'burg Rays & Ribbons 6 Ruffled Bowl - Amyth. (satiny finish) \*
- 150 40. 9" M'BURG SEAWEED 6 RUFFLED BOWL BOWL - MARI. (VERY RARE SIZE; SATINY & NICE)
- 350 41. 10" M'BURG SEAWEED LG. 6 RUFFLED BOWL W/ 3 IN 1 EDGE - AMYTH. (RARE ITEM W/ A NICE SATINY FINISH)
- 25 42. 10 1/4" M'burg Blackberry Wreath Lg. 6 Ruffled Bowl - Mari. (satiny & really nice) \*
- 50 43. 6 1/4" M'burg Blackberry Wreath 6 Ruffled Sauce w/ 3 in 1 Edge - Green (radium & nice)
- 100 44. 8 5/8" M'burg Trout & Fly 6 Ruffled Bowl w/ 3 in 1 Edge - Mari. (satiny & always desirable) \*
- 425 45. M'BURG SUNFLOWER PIN TRAY - AMYTH. (RARE & VERY DESIRABLE; SUPER ITEM W/ NICE COLOR)
- 650 46. M'BURG SEACOAST PIN TRAY - GREEN (RARE & DESIRABLE W/ REALLY NICE COLOR & IRID.)
- 60 47. M'burg Hanging Cherries Butter Lid & Base - lid - Mari. / base - Green (scarce parts; base has small chips on edge)
- 55 48. M'burg Hanging Cherries 2 Handled Spooner - Green (scarce; satiny)
- 55x2 49. (2) M'burg Hanging Cherries Creamers - Green (satiny example; selling choice)
- 200 50. CAMBRIDGE LARGE BUZZ SAW CRUET & STOPPER - GREEN (RARE & VERY DESIRABLE; TOUGH LARGE SIZE & PERFECT)
- 350 51. CAMBRIDGE SMALL BUZZ SAW CRUET & STOPPER - GREEN (RARE & DESIRABLE; NICE SIZE & COLOR)
- 50 52. Cambridge Inverted Strawberry Covered Powder Jar - Green (very scarce; has small chip on lid)
- 200 53. CAMBRIDGE INVERTED STRAWBERRY 5 PC. BERRY SET - AMYTH. (REALLY DESIRABLE; SUPER COLOR & RADIUM FINISH)
- 50 54. Cambridge Double Star Tumbler - Green (scarce)
- 25+50 55. N ORIENTAL POPPY TUMBLER - ICE BLUE (ATTRACTIVE BASE COLOR W/ A PASTEL FINISH)
- 55 56. N Oriental Poppy Tumbler - Green (scarce; nice)
- 55 57. N Oriental Poppy Tumbler - Purp. (nice color & irid.)
- 40 58. N Oriental Poppy Tumbler - Dk. Mari. (super example; nice color)
- 25 59. (3) N Peacock at the Fountain Tumblers - Blue / Elec. Blue (selling choice; nice color & irid.)
- 1100 60. N PEACOCK AT THE FOUNTAIN PUNCH BOWL & BASE -RENNINGER BLUE TOP/ BLUE BASE (VERY RARE BASE COLOR TO THE TOP; REALLY, REALLY TOUGH ITEM; NICE)
- 60 61. (6) N Peacock at the Fountain Handled Punch Cups - Blue (mostly silvery examples; selling choice)
- 800 62. N PEACOCK AT THE FOUNTAIN 7 PC. RUFFLED PUNCH SET - PURP. (RARE & VERY DESIRABLE; SUPER COLOR & IRID.)
- 400 63. N PEACOCK AT THE FOUNTAIN RUFFLED FRUIT BOWL - PURP. (RARE & VERY DESIRABLE; SUPER COLOR & IRID.)
- 85 64. 5 5/8" N Peacock at the Urn Ind. I.C. Bowl - Blue (nice color; scarce)
- 650 65. N SINGING BIRDS 7 PC. WATER SET - GREEN (RARE & DESIRABLE SET; NICE COLOR & IRID.)
- 55 66. N Singing Birds Handled Mug - Purp. (super example)
- 35 67. N Singing Birds Handled Mug - Dk. Mari. (nice color & irid.)
- 155 68. 8 3/4" N Greek Key 8 Ruffled Bowl w/ Basketweave Ext. -Amyth. (nice satiny example)
- 30 69. 8 3/4" N Sunflower 8 Ruffled Spatula ftd. Bowl w/ Meander Ext. - Mari. (satiny finish)
- 850 70. N G&C STANDARD RUFFLED PUNCH BOWL & BASE - PURP. (ABSOLUTELY SUPER TOP & BOTTOM; REALLY NICE)
- 15x4 71. (4) N G&C Stippled Handled Punch Cups - Purp. (rare variations; selling choice)
- 20 72. N G&C Small Size Punch Base only - Purp. (nice color & irid.)
- 425 73. N G&C STANDARD RUFFLED 10 PC. PUNCH SET - DK. MARI. (SUPER COLOR & IRID.; FANTASTIC SET)
- 75 74. 7 1/2" N G&C Plate w/ Basketweave Ext. - Dk. Mari. (super example)
- 3800 75. 8 5/8" N G&C BOWL W/ P.C.E. & RIBBED EXT. - AQUA OPAL. (EXTREMELY RARE COLOR & IRID.; SUPER PASTEL W/ GREAT IRID.; ONE OF THE BEST)
- 55 75A. 6" (MAKER?) HOBNAIL 3 FTD. - RUFFLED CANDY DISH - AQUA. (VERY UNUSUAL / APPEARS TO HAVE SOME AGE; I HAVEN'T SEEN THIS BEFORE)
- 175 76. N G&C FTD. HATPIN HOLDER - PURP. (REALLY NICE EXAMPLE W/ SUPER IRID.; SCARCE)
- 300 77. N G&C FTD. HATPIN HOLDER - OPAQUE CAMPHOR / GREEN STAIN (QUITE A RARE EXAMPLE; VERY TOUGH TO FIND)
- 275 78. N G&C Handled Water Pitcher - Purp. (scarce & nice)
- 60 79. N G&C Tumbler - Purp. (really nice example)
- 85 80. N G&C TUMBLER - PASTEL LAVENDER (SUPER PASTEL EXAMPLE; VERY RARE)
- 155 81. N WILD ROSE 3 FTD. FLARED CANDY DISH - BLUE (RARE COLOR; REALLY TOUGH TO FIND & NICE)
- 55 82. N Wild Rose 3 ftd. Deep Flared Candy Dish - Lt. Amyth. (scarce base color)
- 65 83. N Wild Rose 3 ftd. Deep Flared Candy Dish - Purp. (nice color) *Basinet of roses*
- 45 84. N Rose Wreath Stippled 2 Handled 4 sided Bon Bon - Purp. (rare; silvery)
- 1000 85. N ACORN BURR 8 PC. RUFFLED PUNCH SET - PURP. (RARE & VERY DESIRABLE; SUPER SET & WELL MATCHED)
- 20x6 86. (6) N Grape & Gothic Arches Tumblers - Blue (nice set; selling so much each)
- 125 87. N ROUND HANDLED BUSHEL BASKET - ICE GREEN (VERY SCARCE; NICE COLOR & IRID.)
- 85 88. N Eight Sided Handled Bushel Basket - Blue (scarce w/ nice color & irid.)
- 50 89. N Eight Sided Handled Bushel Basket - White (scarce & frosty)
- 50 *Grmill cherries powder jar lid*
- NS *M'mill hobnail sugar lid*
- 30 *inverted feather cruet jar lid*
- 22 1/2 *for Hanging Cherries sugar bottom*

- 750 90. 10 1/4" TALL N TREE TRUNK STANDARD SWUNG VASE - AQUA OPAL. (RARE & VERY DESIRABLE; PASTEL W/ GREAT IRID.)
- 85 91. 10 1/2" Tall N Tree Trunk Standard Swung Vase - Purp. (really nice color & irid.)
- 95 92. 11" Tall N Diamond Point Swung Vase - Purp. (really nice example)
- 125 93. 11 1/4" Tall N Four Pillar Rib Swung Vase - Aqua Opal. (scarce & very attractive)
- 675 94. N IVY TOWN PUMP NOVELTY - PURP. (RARE & DESIRABLE; PERFECT W/ GREAT COLOR)
- 500 95. N MEMPHIS 8 PC. RUFFLED PUNCH SET - PURP. (RARE & VERY DESIRABLE SET; WELL MATCHED)
- 300 96. N'WOOD CONCAVE DIAMOND 14 PC. STRETCH LEMONADE SET - CELESTE BLUE (RARE SET COMPLETE W/ COASTERS)
- 350 97. N DANDELION HANDLED MUG - AQUA OPAL. (RARE & DESIRABLE; HAS A NICE PASTEL FINISH)
- 350 98. N THREE FRUITS MEDALLION FTD. RUFFLED BOWL W/ MEANDER EXT. - AQUA OPAL. (RARE & HAS A PASTEL FINISH)
- 350 99. N LEAF & BEADS FTD. ROSE BOWL - AQUA OPAL. (VERY SCARCE & DESIRABLE; NICE OPAL.)
- 800 100. N SPRINGTIME 6 PC. TABLE SET - GREEN (VERY RARE SET TO FIND COMPLETE; NICE & WELL MATCHED)
- 75 101. 6"-Tall N Tree Trunk Standard Swung Vase - Purp. (really nice color & irid.) *Hobstar Band Calvary Jar*
- 50 102. Imperial Hobstar Band Pedestaled Water Pitcher - Dk. Mari. (rare variation; really nice color)
- 20x 103. (2) Imperial Hobstar Band Tumblers - Dk. Mari. (selling choice; matches pitcher above)
- 35 104. Imperial Grape Stemmed Goblet - Purp. (scarce color)
- 4000 105. IMPERIAL CHATELINE 7 PC. WATER SET - PURP. (EXTREMELY RARE SET; COMPLETE W/ EXCELLENT COLOR & IRID.)
- 210 106. IMPERIAL 474 TUMBLER - PURP. (RARE & VERY DESIRABLE W/ GREAT IRID.)
- 35 107. Imperial Flute Handled Punch Cup - Purp. (scarce w/ an excellent finish)
- 15 108. 5" Imperial Snow Fancy ind. Round Berry Bowl - Purp. (very rare item in this color)
- 25 109. 4" Imperial Crab Claw ind. Round Berry Bowl - Purp. (another rare colored item; nice)
- 275 110. 9" IMPERIAL COBBLESTONE 8 RUFFLED BOWL - PURP. (RARE W/ EXCELLENT COLOR & IRID.; SUPER)
- 85 111. 7 1/2" Imperial Embossed Scroll Stemmed 8 Ruffled Compote w/ Curved Star Ext. - Purp. (rare item w/ super irid.)
- 80 112. 11" Imperial Grape Lg. 8 Ruffled Bowl - Purp. (super irid.; bright & desirable)
- 65 113. 9" Imperial Diamond Lace 8 Ruffled Bowl - Purp. (super irid.)
- 235 114. IMPERIAL FASHION BREAKFAST SUGAR & CREAMER - SMOKE (RARE PAIR; VERY DESIRABLE & NICE)
- 575 115. IMPERIAL POINSETTIA HANDLED MILK PITCHER - SMOKE (ONE OF THE BEST I'VE SEEN; FANTASTIC)
- 175 116. IMPERIAL STAR MEDALLION HANDLED MILK PITCHER - SMOKE W/ SLAG EFFECT (EXTREMELY RARE EXAMPLE; HAS AN OPAQUE SLAG EFFECT THAT HAS NOT BEEN SEEN BEFORE)
- 60 117. Imperial Star Medallion Handled Milk Pitcher - Smoke (nice irid.)
- 90 118. 14 1/2" TALL IMPERIAL RIPPLE STANDARD SWUNG VASE - SMOKE (RARE & DESIRABLE; GREAT IRID. & PERFECT) *Rococo Smoke Vase*
- 55 119. 11" Tall Imperial Ripple Standard Swung Vase - Smoke / Clear (rare variation w/ nice irid.)
- 350 120. IMPERIAL CORN BOTTLE - SMOKE (RARE & VERY DESIRABLE; SUPER IRID.; REALLY NICE)
- 250 121. IMPERIAL CORN BOTTLE - DK. MARI. (ANOTHER SUPER EXAMPLE W/ GREAT COLOR & IRID.)
- 225 122. 11 1/2" TALL IMPERIAL BEADED BULLSEYE SWUNG VASE - PURP. (SUPER BRIGHT COLOR & IRID.; A BEAUTY!)
- 175 123. 9 1/4" TALL IMPERIAL BEADED BULLSEYE SWUNG VASE - PURP. (ANOTHER SHORTER EXAMPLE W/ GREAT IRID.)
- 115 124. 9 1/4" Tall Imperial Ripple Squatty Mid-size Swung Vase - Purp. (super color & irid.)
- 65 125. Imperial Wide Panel (or Flute) 6 pc. Ruffled Punch Set - Dk. Mari. (dark color w/ great irid.; nice)
- 90 126. Imperial Fashion 9 pc. Flared Punch Set - Mari. (very scarce shape for this popular set)
- 75 127. IMPERIAL HOBSTAR FLOWER STEMMED 6 RUFFLED COMPOTE - PURP. (SCARCE PATTERN IN THIS COLOR; BRILLIANT IRID.)
- 75 128. Imperial Hobstar Flower Stemmed 6 Ruffled Compote - Green (scarce base color)
- 45 129. Imperial File Tumbler - Dk. Mari. (very scarce; dark & nice) *bruise*
- 195 130. 4 1/2" IMPERIAL CANE OPEN EDGE NOVELTY DISH - MARI. / MILK GLASS (VERY RARE ITEM; HAS A NICE MARI. OVERLAY)
- 45 131. 10" Tall I.G. Loganberry Vase - Milk Glass Irid. (rare I.G. item in this color)
- 35 132. 8 1/4" IMPERIAL FLORAL & OPTIC STRETCH 3 FTD. FLARED BOWL - RED (RARE & DESIRABLE ITEM; BRIGHT COLOR W/ STRETCH IRID.) *chip*
- 155 133. 9 1/4" FENTON STRETCH WIDE PANEL FLARED BOWL - RED (SUPER COLOR & HAS A GREAT DARK STRETCH EFFECT)
- 95 134. Fenton Engraved Grape Stretch 1/4" lb. Covered Candy Jar - Ice Green (scarce item; nice)
- 300 135. 10 1/4" FENTON STRETCH DIVING DOLPHIN HANDLED COOKIE TRAY - ICE GREEN (VERY RARE ITEM; PERFECT & NICE)
- 50 135A. Fenton Square Stretch Era Dresser Jar w/ Stopper - Grecian Gold (scarce item in any color; nice & dark)
- 105 135B. Set of (3) Czech (?) Depression Era Dresser Jar w/ Stoppers - Mari. (very unusual items; very different; selling choice)
- 95 136. 10" Tall Fenton 1/2 lb. Stretch Paneled Covered Candy Jar - Honey Amber (scarce item w/ enam. decor. trim)
- 45 137. U.S. Glass 1910 Shriners Champagne Glass - Clear / Irid. (scarce)
- 55 138. U.S. Glass Cosmos & Cane Handled Creamer - Honey Amber (nice color)
- 85 139. U.S. Glass Cosmos & Cane Handled Spooner - Honey Amber (nice color)
- 1150 140. PAIR WESTMORELAND CRUCIFIX CANDLESTICKS - DK. MARI. (VERY RARE PAIR W/ GREAT COLOR & DETAIL; NICE)
- 205 140A. 4 1/2" Tall X 6 1/4" Diameter Fostoria Brocaded Palms Round Stemmed Compote - Pink (rare & desirable; has really nice irid.)
- 205 141. 9 1/2" AUSTRALIAN MAGPIE 12 RUFFLED BOWL - PURP. (VERY SCARCE & ATTRACTIVE W/ A BRIGHT IRID.) *look at this*
- 225 142. FENTON KITTENS CUP & SAUCER - DK. MARI. (VERY SCARCE; DARK & WELL MATCHED)
- 105 143. Fenton Leaf Tiers ftd. Spooner - Dk. Mari. (very scarce Table Set item; nice)
- 25 144. Fenton Smooth Ray Stemmed Spittoon Shaped Compote Vase - Amber (scarce color)
- 35 *off Russian Gold Sweet set*  
*Cracked pit.*

- 900 145. 9 1/2" FENTON LITTLE DAISIES LG. 8 RUFFLED BOWL - DK. MARI. (VERY RARE PATTERN; DARK & VERY DESIRABLE; NICE)
- 325 146. 9 1/2" FENTON DRAGON & STRAWBERRY LG. I.C. SHAPED BOWL - DK. MARI. (RARE & DESIRABLE ITEM; NICE COLOR & DETAIL)
- 105 147. 8 1/2" FENTON CONCORD GRAPE 6 RUFFLED BOWL - DK. MARI. (VERY SCARCE ITEM; DARK W/ REALLY NICE IRID.)
- 20 148. 7" Fenton Peacock & Dahlia I.C Shaped Bowl - Mari. (scarce shape; satiny)
- 5 149. 6 7/8" Fenton Peacock & Dahlia 6 Ruffled Bowl - Mari. (satiny irid.) \*
- 2100 150. 8 3/4" FENTON GOOD LUCK "HEART & HORSESHOE" 8 RUFFLED BOWL - MARI. (VERY RARE & VERY DESIRABLE; DARK & SATINY W/ GREAT DETAIL)
- 70 151. 8 3/4" Fenton Holly low 8 Ruffled Bowl - Lt. Mari./Vaseline (very scarce base color; average irid.)
- 125 152. 9" Fenton Holly Bowl w/ 3 in 1 Edge - Green (very scarce color & shape; nice base color)
- 45 153. 7 1/2" Fenton Holly Deep Flared Bowl - Blue (scarce shape; nice color)
- 80 154. 8" Fenton Holly Deep I.C. Shaped Bowl - Dk. Mari. (super, super dark color & irid.)
- 185 155. 10" FENTON FANTAIL LG. 3 FTD. 6 RUFFLED BOWL W/ B&B EXT. - ELEC. BLUE (VERY RARE ITEM; BEAUTIFUL COLOR & IRID.)
- 175 156. 10 1/4" FENTON FANTAIL LG. 3 FTD. 6 RUFFLED BOWL W/ B&B EXT. - DK. MARI. (ANOTHER RARE ITEM W/ SUPER IRID.; REALLY NICE)
- 75 157. 7 1/2" Fenton Feather Stitch Deep Round Bowl - Green (very scarce pattern, a scarce shape)
- 165 158. 9" FENTON PEACOCK & GRAPE LOW 8 RUFFLED BOWL - OXBLOOD (RARE BASE COLOR W/ A DARK SATINY FINISH)
- 290 159. 8 5/8" FENTON PEACOCK & GRAPE BOWL W/ 3 IN 1 EDGE - P. OPAL. (VERY SCARCE & VERY DESIRABLE; DARK W/ AN OPAL. EDGE)
- 245 160. FENTON THISTLE FTD. OVAL BANANA BOAT - GREEN (RARE & VERY DESIRABLE; SUPER COLOR)
- 175 161. FENTON THISTLE FTD. OVAL BANANA BOAT - AMYTH. (ANOTHER RARE ITEM IN THIS COLOR; REALLY NICE)
- 200 162. FENTON THISTLE FTD. OVAL BANANA BOAT - BLUE (VERY SCARCE & DESIRABLE W/ REALLY NICE COLOR & IRID.)
- 105 163. Fenton Thistle ftd. Oval Banana Boat - Mari. (scarce & desirable; nice average color & irid.)
- 50 164. Fenton Persian Medallion Rose Bowl - White (scarce) frosty w/ nice irid.)
- 325 165. FENTON MIKADO LF. 6 RUFFLED STEMMED COMPOTE - BLUE (VERY SCARCE; A NICE SATINY EXAMPLE)
- 130 166. Fenton Butterflies 2 Handled Card Tray w/ Horlacher Advert. - Amyth. (very scarce item w/ the Beer Advertising)
- 45 167. Fenton Peacock Tail 6 Ruffled Hat w/ General Furniture Adv. - Green (scarce w/ advertising on the base)
- 10 168. Fenton Rose Wreath handled Punch Cup w/ Persian Med. Int. - Green (average color & irid.)
- 70 169. Fenton Birds & Cherries 2 Handled odd 4 sided Bon Bon - Green (really nice color & irid.)
- 900 170. FENTON ORANGE TREE FTD. HATPIN HOLDER - AMYTH. (VERY RARE BASE COLOR; AVERAGE SATINY FINISH; BUT GO FIND ANOTHER)
- 55 171. Fenton Orange Tree Covered Powder Jar - Amyth. (very scarce color; has a chip on the lid)
- 400 172. FENTON ORANGE TREE STANDARD FLARED MUG - RED SLAG (VERY RARE IN THIS COLOR; HAS NICE DARK SATINY IRID.)
- 45 173. Fenton Orange Tree Flared Shaving Mug - Blue (nice color & irid.)
- 25x4 173A. Set of (6) Fenton Orange Tree Scroll Tumblers - Mari. (very scarce; nice average colored items; selling so much each for set)
- 85x100 174. FENTON BLACKBERRY BLOCK TUMBLER - GREEN (RARE IN THIS COLOR; NICE COLOR & REALLY NICE IRID.)
- 25 175. 10 1/4" FENTON TEN MUMS LG. 6 RUFFLED BOWL - AMYTH. (VERY SCARCE W/ EXCELLENT SATINY IRID.) \*
- 45 176. 7 7/8 " Fenton Captive Rose I.C. Shaped Bowl - Amyth. (nice shape & really nice irid.)
- 55 177. 7 3/4" Fenton Two Flowers Spatula ftd. Ruffled Bowl - Amyth./Amber (sorta Horehound; unusual for Fenton)
- 50 178. 9 3/8" Fenton Three Fruits 12 sided Plate - Amyth.(scarce & satiny; nice irid.)
- 35 179. Fenton Apple Tree Tumbler - Blue (sorta bright blue irid.)
- 55 180. 4 7/8" FENTON MINIATURE BLACKBERRY WHIMSEY FLAT PLATE - BLUE (HAS A SMALL CHIP ON THE BASE; SUPER FLAT & EXTREMELY RARE)
- 65 181. 9 1/4" Fenton Butterfly & Berry ftd. 8 Ruffled Master Berry Bowl - Blue / Elec. Blue (scarce item w/ excellent color & irid.)
- 22 1/2 x 2 182. (3) 5 1/4" Fenton Butterfly & Berry ftd. Round ind. Berry Bowls - Blue (very scarce; selling so much each for set)
- 20 183. Fenton Butterfly & Fern Tumbler w/ Manu. Ground Base - Dk. Mari. (satiny irid.)
- 10 184. Fenton Thin Rib ftd. J.I.P. Vase - Lt. Mari. (scarce; nice pastel irid.)
- 400 185. DUGAN FORMAL FTD. J.I.P. VASE - PURP. (RARE & VERY DESIRABLE; BRIGHT INTERIOR IRID.)
- 300 186. DUGAN FORMAL FTD. J.I.P. VASE - MARI. (VERY SCARCE ITEM; VERY DESIRABLE)
- 60 187. Dugan Heavy Iris Tumbler - Amyth. (light in color; nice satiny finish)
- 25 188. Dugan Maple Leaf Tumbler - Amyth. (lighter in color; nice satiny finish)
- 45 189. Dugan Leaf Ray Tri-Cornered Handled Nappy - Purp. (super color & irid.)
- 305 190. 7" DUGAN FISHSCALE & BEADS FLARED PLATE - PURP. (RARE & DESIRABLE; SUPER IRID.; NICE)
- 175 191. 7 1/8" Dugan Fishscale & Beads Flat Plate - Mari. (scarce; flat w/ really nice pastel irid.)
- 110 192. 6 5/8" Dugan Wishbone & Spades Flat Plate w/ Basketweave Ext. - Purp. (nice base color w/ goldish irid.)
- 60 193. 5 3/4" Dugan Wishbone & Spades 8 Ruffled Sauce w/ Plain Ext. - Amyth. (nice base color w/ goldish irid.)
- 95 194. Dugan S Repeat Tri-Cornered Punch Cup Whimsey - Purp. (scarce w/ really nice irid.)
- 20x2 194A. (2) Dugan Many Fruits Handled Punch Cups - Dk. Mari. (super dark color w/ nice irid.; selling so much each for pair)
- 100 195. DUGAN NAUTILUS NOVELTY CREAMER - NOT SIGNED - PURP. (SCARCE & VERY DESIRABLE W/ REALLY NICE IRID.)
- 65 196. Dugan Nautilus Novelty Creamer not signed - P. Opal. (scarce & desirable; nice opal.)
- 25 197. Dugan Nautilus Novelty Open Sugar - not signed - P. Opal. (scarce & desirable; irid. a bit spotty)
- 150 198. DUGAN NAUTILUS NOVELTY CANDY DISH - SIGNED IN SCRIPT - P. OPAL. (VERY SCARCE & DESIRABLE; NICE) \*
- 10 199. Dugan Vineyard Tumbler - Pastel Mari. (nice irid.) \*
- 4500 200. 11" DUGAN FARMYARD LG. 8 RUFFLED BOWL W/ JEWELLED HEART EXT. - PURP. (RARE & VERY DESIRABLE; ATTRACTIVE W/ BRIGHT IRID.)

201. 9 1/2" Dugan Double Stem Rose domed Flared Plate - White (scarce item w/ excellent irid.)
202. 11 1/4" Dugan Persian Garden Lg. I.C. Bowl - White (scarce & desirable)
203. **DUGAN VINTAGE GRAPE COVERED POWDER JAR - WHITE (RARE & VERY DESIRABLE; SUPER IRID. & PERFECT)**
204. Dugan Puzzle 2 Handled Flared ftd. Bon Bon - White (really nice irid.)
205. **DUGAN BEADED SHELL FTD. WATER PITCHER - PURP. (RARE ITEM W/ A BRIGHT SATINY IRID.)**
206. (3) Dugan Beaded Shell Tumblers - (1) - Amyth. (2) - Purp. (selling choice; one is lighter)
207. Dugan Beaded Shell Handled Mug - Dk. Mari. (scarce & very desirable; nice)
208. Dugan Beaded Shell Handled Mug - Blue (nice color & irid.)
209. Dugan Beaded Shell Handled Mug - Purp. (nice color & rid.)
210. **9" X 9" DUGAN HEAVY WEB LG. 4 SIDED SQUARE BOWL - P. OPAL. (RARE & VERY DESIRABLE ESP. IN THIS SHAPE; LIGHT IRID. W/ NICE OPAL.)**
211. **DUGAN FISHNET SINGLE LILY RUFFLED EPERGNE - P. OPAL. (VERY SCARCE; DARK COLOR & NICE OPAL.)**
212. **DUGAN FISHNET SINGLE LILY RUFFLED EPERGNE - AMYTH. (VERY SCARCE; REALLY NICE BRIGHT SATINY IRID.)**
213. Dugan (?) Intaglio Daisy Lg. Rose Bowl - Mari. (scarce; satiny)
214. 9 5/8" Tall Dugan Line Lattice Swung Vase - Mari. (super irid.)
215. **DUGAN STORK IN THE RUSHES HANDLED WATER PITCHER - LIME GREEN / MARI. (VERY RARE BASE COLOR; REALLY NICE)**
216. (2) Dugan Stork in the Rushes Tumblers - Mari. (super irid.)
217. Dugan Stork in the Rushes 7 pc. Round Berry Set - Mari. (actually quite a scarce set; nice)
218. **DUGAN HERON HANDLED MUG - PURP. (RARE & DESIRABLE; NICE COLOR & IRID.)**
219. Dugan Fishermans Handled Mug - Purp. (scarce; nice)
220. **8 1/2" DUGAN PONY 10 RUFFLED BOWL - ICE GREEN (RARE & VERY DESIRABLE; SUPER IRID.)**
221. Dugan Honeycomb Rose Bowl - P. Opal. (scarce; nice color & opal.)
222. 11" Dugan Petal & Fan Lg. 6 Ruffled Bowl w/ J.H. Ext. - Dk. Mari. (super color & irid.; really attractive)
223. 10 1/2" Dugan Interior Smooth Rays Lg. 8 Ruffled Bowl w/ J.H. Ext. - P. Opal. (really P. Opal. example)
224. Dugan Cherry Wreath Lg. Oval Master Berry Bowl - Purp. (has a nice bright satiny finish)
225. **DUGAN BUTTERFLY & TULIP LG. 2 SIDED FTD. BOWL W/ I.F.F. EXT. - MARI. (VERY SCARCE; LIGHT IN COLOR W/ AN ODD SHAPE)**
226. Dugan Peacock at the Fountain 5 pc. Water Set - Blue (very scarce w/ really nice irid.)
227. Dugan Peacock at the Fountain Tumbler - Purp. (really dark color w/ super irid.)
228. N Enameled Ground Cherries Tumbler - Blue (scarce; nice)
229. U.S. Glass 1909 Louisville Champagne Glass - Clear
230. U.S. Glass 1910 New Orleans Champagne Glass - Clear
231. U.S. Glass 1911 Rochester Champagne Glass - Clear
232. 1981 ICGA LaCrosse, Wis. Souvenir Frolicking Bears Ruffled Spittoon - Aqua Opal. (very scarce & very desirable)
233. 1982 ICGA Elkhart, Ind. Souvenir Frolicking Bears Ruffled Spittoon - Red (very desirable)
234. 1983 ICGA St. Louis, Mo. Souvenir Frolicking Bears Ruffled Spittoon - Vaseline Opal. (very desirable)
235. 1998 ICGA Kansas City, Mo. Souvenir Frolicking Bears Spittoon - Green Opal. (attractive; nice)
236. 1982 ACGA Dayton, Oh Seacoast Flared Souvenir Spittoon - P. Opal. (scarce; attractive)
237. ACGA Morning Glory Souvenir Tankard Pitcher - Red (super irid.)
238. 1980 HOACGA ftd. Hatpin Holder Souvenir - Ice Green (attractive)
239. 1978 HOACGA ftd. Corn Vase Souvenir - Red (bright irid.)
240. 1979 HOACGA 2 Handled Loving Cup Souvenir - Red (bright irid.)
241. 1975 ACGA Dayton, Ohio Souvenir Bell - Blue
242. 1990 ICGA Cedar Rapids Enameled Covered Candy Jar - Green
243. 1993 ACGA Lexington, Ky Inverted Strawberry Souvenir Spittoon - Red
244. Lincoln Land Lily Flower Souvenir Bell - P. Opal.
245. Pr. Imperial (I.G.) Figural Old Man & Woman Figural Salt & Pepper - Smoke
246. Pr. Imperial (I.G.) Figural Old Man & Woman Figural Salt & Pepper - Mari.
247. 1985 Gibson Souvenir Miniature Handled Basket - Red
248. 1976 HOACGA Good Luck Souvenir Shot Glass to Whiskey Set - Red
249. I.G. Octagon Oil Cruet & Stopper - Irid. Amber
250. I.G. Octagon Oil Cruet & Stopper - Light Caramel Slag
251. I.G. Octagon Oil Cruet & Stopper - Dark Caramel Slag
252. I.G. Octagon Oil Cruet & Stopper - Crystal/Gold
253. I.G. Large Figural Swan Console Bowl - Mari. (scarce)
254. I.G. Octagon ftd. Vase - Red
255. I.G. Octagon ftd. Vase - Crystal/Gold

---

# Notes

---

## ***BURNS AUCTION SERVICE***

**Now accepts Visa • MasterCard • Discover • American Express both at Auctions and through Mail Bids!**

*A 3% Clerking Fee will apply on all purchases except those by cash or check.*



Lot # 85



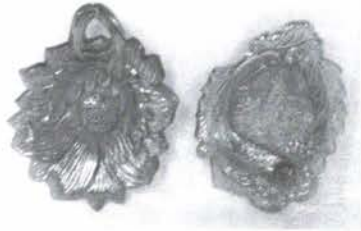
Lot # 70



Lot # 95



Lot # 145



Lot # 45, # 46



Lot # 150



Lot # 140



Lot # 30



Lot # 185, # 186

**Burns Auction Service**

P.O. Box 608  
Bath, New York 14810

First Class  
US Postage  
**PAID**  
Permit No. 7  
Hammondsport, NY



Lot # 115

LEE MARKLEY  
BOX 306  
MENTONE IN 46539