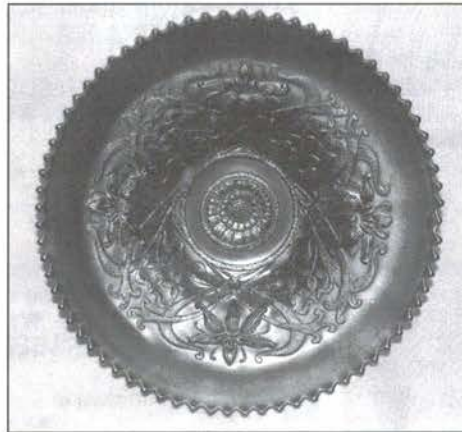




Lot #5



Lot #25



Lot #230

BURNS

AUCTION SERVICE

2005 Mid-Atlantic Carnival Glass Jamboree Auction

Friday, October 21, 2005

(preview 4:30 p.m.; Auction 6:30 p.m.; Lots 1 - 135)

Saturday, October 22, 2005

(preview 8 a.m.; Auction 9:00 a.m.; Lots 136 - end)

at the **Grand Venice Hotel**

431 Dual Highway (Rte. 40), Hagerstown, MD 21740

(301) 733-0830

Here we're selling another really nice selection of old Carnival Glass from the collection of Mr & Mrs Kenneth Gehlbach from Indiana. This selection of glass has a flare for vases and there are some really attractive items to be sold.

The 'new & improved' Grand Venice Hotel will host the event. It's the 'ole' Venice Inn located right on U.S. 40 - Dual Highway and there have been a number of improvements made - hope you'll enjoy it!

Mail bids, phone bids, etc. due by Friday afternoon October 21, 2005.



Lot #200



Lot #110



Lot #65



Lot #35

1. 1970's Fenton Figural Butterfly - Dk. Purp. (nice color, foil label)
2. 1992 HOACGA Mug Favor - Ice Blue
3. Newer Fenton Inverted Strawberry Handled Creamer - Pink Opal (nice opal)
4. 1982 Fenton Inverted Strawberry Spittoon - Purp. (beautiful irid.)
- 650 5. **CAMBRIDGE INVERTED STRAWBERRY SPITTOON - GREEN (RARE & PERFECT W/ NICE COLOR)**
6. 9" Imperial Fashion IC Shaped Bowl - Mari. (scarce shape)
7. 9" Imperial Embossed Scroll 8 Ruffled Bowl w/ File Ext. - Mari.
8. 8 1/2" Imperial Hattie Round Flared Bowl - Mari.
9. Imperial Geometric Patterened 6 Ruffled Stemmed Compote - Mari. (I just can not remember the name.)
10. **8" TALL IMPERIAL SWIRL paneled J.I.P. VASE - SMOKE (VERY SCARCE W/ EXCELLENT COLOR & IRID.)**
11. U.S. Glass Estate Perfume Bottle & Stopper - Gray Flash. (very scarce w/ excellent color & irid.)
12. 3 1/2" Tall U.S. Glass Kings Crown Stemmed Wine Glass - Lt. Mari.
13. Westmoreland File Stemmed 6 Ruffled Compote - Dk. Mari. / Milk Glass (scarce w/ super dark irid., really nice)
14. 7 3/4" Dugan Six Petals 6 Ruffled Bowl - P.Opal. (nice opal & irid.)
15. **FENTON HEARTS & TREES LG. 8 RUFFLED FTD. MASTER BERRY BOWL W/ B&B EXT. - DK. MARI. (RARE PATTERN AND ABOUT AS NICE AS THEY COME)**
16. 9" Tall Fenton Fine Rib Standard Swung Vase - Amyth. (scarce base color)
17. N Round Handled Bushel Basket - Custard/Nutmeg (scarce w/ excellent Nutmeg)
18. 10 1/2" Tall N Thin Rib Standard Swung Vase - Russet Green (nice color & irid.)
19. N Peach Covered Sugar Bowl - White (very scarce table set item; nice)
- 1500 20. **N PEACOCK AT THE FOUNTAIN HANDLED WATER PITCHER - GREEN (RARE & VERY DESIRABLE; REALLY NICE COLOR & IRID.)**
21. **N PEACOCKS 8 RUFFLED BOWL W/ RIBBED EXT. - ICE BLUE (RARE & VERY DESIRABLE; GREAT IRID. & RARE COLOR)**
22. **N STRAWBERRY STIPPLED 8 RUFFLED BOWL W/ RIBBED EXT. - BLUE (VERY DESIRABLE COLOR & NICE IRID.)**
23. **N STRAWBERRY STIPPLED BOWL W/ P.C.E. & RIBBED EXT. - MARI. (VERY SCARCE W/EXCELLENT IRID.)**
24. **N G&C FTD. CENTERPIECE BOWL - MARI. (SCARCE ITEM W/ NICE COLOR & IRID.)**
- 850 25. **10 1/4" N WISHBONE CHOP PLATE W/ BASKETWEAVE EXT. - AMYTH. (RARE & VERY DESIRABLE W/ A NICE MULTI-COLORED IRID.)**
26. 9 3/4" N Wishbone 8 Ruffled Bowl w/ Basketweave Ext. - Purp. (scarce item w/ nice bright satiny irid.)
27. **8" N WISHBONE FTD. DEEP 8 RUFFLED BOWL W/ RUFFLES & RINGS - PURP. (SUPER EXAMPLE W/ BRIGHT BLUE HIGHLIGHTS)**
28. 9" N Greek Key Plate w/ Basketweave Ext. - Green (rare item w/ nice irid.; chip on edge)
29. N G&C ftd. Hatpin Holder - Purp. (scarce & desirable w/ nice color & irid.)
30. **SCARAB HATPIN - GOLD FLASH (RARE ITEM AND A REAL SCARAB. - NICE GOLD FLASH)**
31. Four Hearts Hatpin - Dark (very scarce w/ nice irid.)
32. 5" Tall Jain Figural Hand Vase - Mari. (scarce size w/ nice color)
33. 7" Tall Jain Figural Hand Vase - Mari. (scarce w/ nice color)
34. 9" Tall Jain Figural Fish Vase - Mari. (scarce w/ nice color)
- 425 35. **EUROPEAN "KULOR" CYLINDER VASE - BLUE (RARE AND VERY DESIRABLE W/ SUPER IRID.)**
36. 18 1/4" Tall Fenton Rustic Swung Funeral Vase - Mari. (rare w/ nice color but cracked)
- 466 37. **6" FENTON PERSIAN MEDALLION FLAT PLATE - MARI. / VASELINE (VERY RARE BASE COLOR FOR THIS ITEM)**
38. Fenton 2 Row Open Edge 2 sided Hat w/ John H. Bra Adv. - Mari. (nice color & irid.)
39. Fenton 2 Row Open Edge 2 sided Blackberry Hat - Mari. (fair color)
40. **FENTON ACORN LOW 8 RUFFLED BOWL - MARI. OPAL. (SORTA AMBER BASE GLASS W/ NICE SATINY IRID. & OPAL TIPS)**
41. **FENTON G&C SPATULA FTD. FLARED BOWL - WHITE (SCARCE & VERY UNDERATED - HAS NICE IRID.)**
42. Imperial Primrose Light Shade - Mari. (nice color)
43. 5 1/2" Tall Imperial Ripple Miniature Swung Vase - Mari. (cute size - nice)
44. Imperial Pansy Round One Handled Nappy - Mari. (nice color)
45. **8" M'BURG TROUT & FLY I.C. SHAPED BOWL - AMYTH. (RARE & VERY DESIRABLE - HAS AVERAGE SATINY IRID.)**
46. **8"X 7 3/4" M'BURG STRAWBERRY 4 SIDED SQUARE BOWL - AMYTH. (RARE SHAPE & SIZE W/ A NICE RADIUM FINISH)**
47. 10" M'burg Whirling Leaves 6 Ruffled Bowl - Amyth. (satiny)
48. 10 1/4" M'burg Fleur de Lei Bowl w/ 3 in 1 Edge - Mari. (scarce w/ a nice satiny finish)
49. 8" Sowerby Diving Dolphins 3 ftd. Compote w/ Embossed Scroll Int. - Amyth. (scarce color w/ a radium type finish)
50. **DUGAN FLORAL & GRAPE BULBOUS WATER PITCHER - WHITE (SCARCE & DESIRABLE W/ GREAT IRID.)**
51. Dugan Miniature Basketweave Handled Basket - Mari.
52. 9" Tall Dugan Lined Lattice Swung Vase - Mari. (vr desirable w/ super irid.)
53. 8 - 9" Tall Heisey Ribbed Paneled Covered Candy Jar - Mari. (unusual pattern w/ a darker finish)
54. N Singing Birds Handled Mug - Blue / Elec. Blue (very attractive examples w/ blue highlights)
55. **FENTON STRETCH THIN RIBBED 3 PC. CONSOLE SET - CELESTE BLUE (RARE AND VERY ATTRACTIVE - TOUGH)**
56. **IMPERIAL POINSETTIA HANDLED MILK PITCHER - SMOKE (VERY SCARCE & DESIRABLE W/ A NICE FINISH)**
57. 8 1/2" Tall Imperial Jewels Flared Top Vase - signed with Iron Cross - Purp. (attractive shape; nice base color & irid.)
58. Imperial Beaded Acanthus Handled Milk Pitcher - Mari. (scarce pattern w/ nice average color)
59. Imperial Interior Wide Panel Rose Bowl - Smoke (very unusual in this color - nice)
60. **12" TALL IMPERIAL BEADED BULLSEYE SWUNG VASE - PURP. (SUPER COLOR & FANTASTIC IRID.)**
61. 10 1/2" & 10" Imperial Beaded Bullseye Swung Vases - Dk. Mari. (selling choice)
62. 8" Tall Imperial Double Handled Flared Vase - Mari. (in the stretch category; scarce)
63. 5 1/2" Tall Imperial Crackle (Tree of Life) ftd. Fan Vase w/ Enam. Flower Decor. - Mari. (nice item w/ enameled pansies)
64. 8" Tall Imperial Octagon ftd. Flared Vase - Mari. (scarce w/ nice color)
- 250 65. **9 5/8" TALL IMPERIAL LOGANBERRY VASE W/ FLARED TOP - AMBER (RARE & VERY ATTRACTIVE W/ AN UNUSUAL FLARE)**
66. 10 1/2" Tall Imperial Ripple Standard Swung Vase - Dk. Amber (scarce w/ a nice base color)
67. 8 1/2" Tall Imperial Ripple Standard Swung Vase - Amber (scarce w/ a lighter base color)
68. 15 1/4" Tall x 3 7/8" Base x 6 1/4" Flare Imperial Ripple Mid Size Swung Vase - Dk. Mari. (a nice item w/ a desirable size & color)

69. 10 5/8" Tall Imperial Standard Swung Vase - Purp. (what it lacks in detail, it makes up in irid.)
70. **PAIR 11 1/2 - 12" IMPERIAL RIPPLE LARGE STANDARD SWUNG VASES - SMOKE TO CLEAR (UNUSUAL AND VERY ATTRACTIVE & DESIRABLE)**
71. 4 1/2" Tall Imperial Ripple Miniature Swung Vase - Dk. Mari. (attractive item)
72. 9 3/4" Tall Imperial Parlor Panels Standard Swung Vase - Mari. (nice color)
73. 12 1/4" Tall Imperial Free Fold Swung Vase - Dk. Mari. (nice color)
74. Imperial Premium (#848 Colonial) Candlestick - Smoke (scarce)
- 450 75. **IMPERIAL THUMBPRINT & OVALS VASE - DK. MARI. (VERY ATTRACTIVE ITEM W/ DARK COLOR & GREAT IRID.)**
76. 6 3/4 - 7" IMPERIAL MINIATURE MORNING GLORY ODD SWUNG VASE - PURP. (SUPER IRID. W/ A VERY UNIQUE SHAPE)
77. 6 3/4" Imperial Miniature Morning Glory Swung Vase - Purp. (typical shape w/ super irid.)
78. 5 1/4" Tall x 5 1/4" Flare Imperial Miniature Morning Glory Swung Vase - Mari. (great color, irid. & detail)
79. 8 5/8" Tall Imperial Miniature Morning Glory Swung Vase - Mari. (another really nice & attractive item)
80. **IMPERIAL ROCOCO DOMED RUFFLED VASE - SMOKE (VERY SCARCE & VERY DESIRABLE - PERFECT)**
81. 5 1/2" IMPERIAL FILE DOMED RUFFLED VASE - MARI. (RARE ITEM TO FIND IN THIS SHAPE - SAME AS THE ROCOCO)
82. Imperial File Spooner - Dk. Mari. (scarce; great color)
83. 5 1/2" Tall x 4 1/2" Flare Imperial Miniature Morning Glory & Drape Swung Vase - Dk. Mari. (super irid. & shape)
84. 5" Tall x 3 1/2" Flare Imperial Miniature Morning Glory & Drape Swung Vase - Dk. Mari. (super example)
85. 5 7/8" Tall Imperial Fleur de lei #5 Goblet Shaped Vase - Dk. Mari. (rare & underpriced item; super color & irid.)
86. Imperial Lustre Rose 7 pc. Water Set - Dk. Mari. (one of the better examples of this available set)
87. **IMPERIAL BROKEN ARCHES 8 PC. ROUND PUNCH SET - PURP. (RARE SET BUT SILVERY - ONE CUP CHIPPED)**
88. **IMPERIAL BROKEN ARCHES 8 PC. RUFFLED PUNCH SET - MARI. (SCARCE SHAPE - NICE COMPLETE SET)**
89. 9 1/4" Imperial Pansy 8 Ruffled Bowl - Amber (fair irid.; scarce color)
90. **IMPERIAL FLUTE TOOTHPICK HOLDER - MARI./VASELINE (RARE & VERY DESIRABLE BASE COLOR W/ A DARK OVERLAY)**
91. **IMPERIAL OCTAGON TOOTHPICK HOLDER - DK. MARI. (RARE & A BEAUT - AND AN OLD ONE)**
92. Imperial Waffle Block 8 pc. Punch Set - Mari. (really nice color - well matched)
93. Imperial Waffle Block Punch Top Only - Teal (never seen a base or cups - a beaut)
94. 11 1/4" Imperial Heavy Grape Chop Plate - Helios Green (scarce item; typical Helios color)
95. **IMPERIAL DIAMOND LACE 7 PC. WATER SET - PURP. (VERY SCARCE - REALLY NICE IRID.)**
96. U.S. Glass 1905 Niagara Falls Shriners 3 Handled Cup - Clear (scarce item; not iridized)
97. U.S. Glass 1909 Louisville Champagne Glass - Clear / Irid. (scarce)
98. U.S. Glass 1910 New Orleans Champagne Glass - Clear / Irid. (scarce)
99. U.S. Glass 1911 Rochester Champagne Glass - Clear / Irid. (scarce)
- 900 100. **10 1/2" TALL N DIAMOND POINT SWUNG VASE - AQUA OPAL. (VERY RARE AND VERY DESIRABLE W/ SUPER COLOR & IRID.)**
- 1800 101. **10" TALL N DIAMOND POINT SWUNG VASE - SAPPHIRE (SUPER RARE BASE COLOR; A BEAUTY & TOUGH TO FIND)**
102. 10 5/8" Tall N Diamond Point Swung Vase - Blue Opal. (not carnival - really nice)
103. 10 1/2" Tall N Diamond Point Swung Vase - Purp. (really nice irid. - nice & bright)
104. 7 1/4" Tall N Diamond Point Swung Vase - Dk. Mari. (rare squatty size - really desirable)
105. 11 1/2" Tall N Diamond Point Swung Vase - Green (super color and bright irid. - a real beauty)
106. N'wood Pillar & Drape Light Shade - Dk. Mari. (scarce; nice dark color)
107. **8" TALL N DRAPERY VARIANT SWUNG VASE - BLUE (RARE & VERY DESIRABLE)**
108. **8" TALL N DRAPERY VARIANT SWUNG VASE - DK. MARI. (RARE W/ GREAT COLOR & IRID.; REALLY NICE)**
109. N Daisy & Drape ftd. Turned in Vase - White (scarce & frosty)
110. **N RIBBED TORNADO STANDARD TRI-CORNERED VASE - PURP. (RARE & DESIRABLE W/ GOLDISH HIGHLIGHTS)**
111. N Drapery Tri-Cornered Candy Dish - Ice Blue (scarce; nice pastel)
- 450 112. **N CORN VASE W/ PLAIN BASE - PURP. (RARE & DESIRABLE W/ STRONG COLOR & IRID.)**
- 550 113. **N CORN VASE W/ PLAIN BASE - GREEN (RARE & DESIRABLE; EXCELLENT COLOR & IRID.)**
114. N CORN VASE W/ STALK BASE - ICE GREEN (SCARCE W/ NICE IRID.)
115. **12" TALL N THIN RIB STANDARD SWUNG VASE - VASELINE (VERY RARE & VERY DESIRABLE - STRONG BASE COLOR)**
116. 14" Tall N Thin Rib Mid-size Swung Vase - Mari. (scarce w/ nice dark color & bright irid.)
117. 12" Tall N Pillar Ribbed Swung Vase - Aqua Opal. (scarce w/ nice opal & good feet)
118. 5 1/2" Tall N (?) Pillar Ribbed Squatty Flared Vase - Amyth. (rare variation w/ a sorta radium finish)
- 600 119. **N IVY TOWN - PURP. (RARE & VERY DESIRABLE W/ GREAT COLOR & IRID.)**
- 525 120. **10 3/4" TALL N TREE TRUNK STANDARD SWUNG VASE - AQUA OPAL. (RARE & VERY DESIRABLE; SORTA TRI-CORNERED W/ A BUTTERSCOTCH OVERLAY)**
- 900 121. **10 1/2" TALL N TREE TRUNK STANDARD SWUNG VASE - SAPPHIRE / BLUE (VERY RARE BASE COLOR W/ A NICE SATINY FINISH)**
122. **10" TALL N TREE TRUNK STANDARD SWUNG VASE - BLUE (RARE BASE COLOR W/ A DARK FINISH)**
123. 10 3/4" Tall N Tree Trunk Standard Swung Vase - Purp. (nice color & irid.)
124. 10" Tall N Tree Trunk Standard Swung Vase - Amyth. (nice color & irid.)
125. **7 1/2" TALL N TREE TRUNK STANDARD SWUNG VASE - WHITE (VERY DESIRABLE SIZE; NICE & FROSTY)**
126. 10 3/4" Tall N Tree Trunk Standard Swung Vase - Mari. (has a bright finish that's very desirable)
127. **12 1/2" TALL N TREE TRUNK MID-SIZE SWUNG VASE - GREEN (VERY SCARCE & VERY ATTRACTIVE; GREAT IRID.)**
128. **12" TALL N TREE TRUNK MID-SIZE SWUNG VASE - PURP. (VERY SCARCE W/ EXCELLENT COLOR & IRID.)**
129. N G&C Handled Punch Cup - Mari.
130. **N G&C LARGE OVAL DRESSER TRAY - PURP. (RARE VARIATION W/ SUPER IRID.; NICE)**
131. N G&C Large Dresser Tray - Purp. (very scarce; has excellent color & irid.)
132. N G&C Small Pin Tray - Mari. (darker w/ nice irid.; very scarce)
133. **N G&C FTD. HATPIN HOLDER - PURP. (VERY SCARCE & ALWAYS DESIRABLE; NICE)**
134. N G&C ftd. Hatpin Holder - Mari. (scarce w/ average color & irid.)
135. N G&C Covered Powder Jar - Amyth. (scarce; nice color; lid has a chip)

— Start of Second Session —

136. N G&C COLOGNE BOTTLE & STOPPER - AMYTH. (SCARCE W/ NICE MULTI-COLORED LOOK)
137. N G&C Table Set Creamer only - Purp. (scarce; nice color)
138. N G&C Covered Sweetmeat Compote - Purp. (scarce w/ excellent bright irid.)
139. N G&C Shot Glass - Purp. (very scarce; really nice)
140. PAIR N G&C CANDLESTICKS - GREEN (VERY SCARCE PAIR W/ EXCELLENT IRID.)
141. N G&C Candlestick - Mari. (nice color & irid.)
142. N G&C Handled Water Pitcher - Purp. (very scarce w/ nice color & irid.)
143. N G&C 6 Ruffled Hat Shape from Tumbler - Green (scarce; average)
144. N G&C Bon Bon w/ Basketweave Ext. - Purp. (satiny irid.)
145. N G&C FTD. BANANA BOAT - PURP. (EXCELLENT COLOR & IRID; PERFECT W/ BRIGHT IRID.)
146. N G&C ftd. Banana Boat - Mari. (very nice color & nice irid.)
147. N G&C Covered Cracker Jar - Mari. (scarce w/ nice color & irid.)
148. N Thin Rib "Columns" JIP Vase - Purp. (very scarce & desirable; nice bright satiny finish)
149. N Thin Rib "Columns" JIP Vase - Dk. Mari. (very scarce w/ nice darker irid.)
- 750 150. N ROSE SHOW 8 RUFFLED BOWL - ICE GREEN (RARE & VERY DESIRABLE; PASTEL W/ REALLY ATTRACTIVE IRID.)
151. N ROSE SHOW FLAT PLATE - MARI. (RARE & DESIRABLE; IN PRETTY GOOD SHAPE; LIGHTER IN CENTER)
152. N POPPY SHOW RUFFLED BOWL - DK. MARI. (SUPER EXAMPLE; DARK W/ EXCELLENT COLOR & IRD.)
153. N Stretch Large 4 Paneled Candlestick - Russet Green (very scarce item ; nice)
154. N BEADED CABLE FTD. RUFFLED ROSE BOWL - AQUA OPAL. (DESIRABLE W/ AN ATTRACTIVE COLOR & IRID.)
155. N HEART & FLOWERS STEMMED RUFFLED COMPOTE W/ RIBBED EXT. - AQUA OPAL. (PASTEL & NICE; PERFECT & DESIRABLE)
156. N Hearts & Flowers Stemmed Ruffled Compote w/ Ribbed Ext. - White (scarce; frosty w/ average irid.)
157. N Hearts & Flowers Stemmed Ruffled Compote w/ Ribbed Ext. - Pastel Mari. (lighter base color w/ excellent irid.)
158. N Hearts & Flowers Stemmed Ruffled Compote w/ Plain Ext. - Mari. (scarce & desirable; nice dark color)
159. N Wishbone Bowl w/ PCE & Basketweave Ext. - Mari. (hase a nice satiny finish)
160. N EMBROIDERED MUMS 8 RUFFLED BOWL W/ RIBBED EXT. - BLUE (RARE & DESIRABLE W/ A GOLDISH FINISH)
161. N Good Luck 8 Ruffled Bowl w/ Basketweave Ext. - Mari. (scarce w/ an attractive pastel finish)
162. N Three Fruits Stippled Plate w/ Ribbed Ext. - Dk. Mari. (very scarce w/ excellent irid.)
163. N Three Fruits Plate w/ Basketweave Ext. - Mari. (satiny finish)
164. 6" Tall N Leaf Columns Squatty Swung Vase - Mari. (rare size w/ nice dark color & strong irid.)
165. 6" Tall N Leaf Columns Swung Vase - Amyth. (scarce w/ really nice base color & irid.)
166. 5" Tall Stevens & Williams Swirled Ruffled Fan Vase - White (scarce & desirable Art Glass items)
167. 3 1/2" TALL DURAND CYLINDER W/ ETCHED FLORAL DESIGN - MARI. FLASH (RARE & DESIRABLE CABINET BASE; NICE)
168. U.S. GLASS FANCY CUT CHILD'S WATER PITCHER - LT. MARI. (RARE MINIATURE W/ TYPICAL COLOR & IRID.)
169. "Pebbles" Mellon Rib Lg. Ruffled Fan Vase - Lt. Mari. (rare & item that I've only seen in crystal)
170. (MAKER?) STARBRITE FTD. FLARED CYLINDER VASE - GREEN (RARE & DESIRABLE: HAS SUPER IRID.; NICE)
171. BROCKWITZ LATTICE & LEAVES FTD. VASE - DK. MARI. (VERY SCARCE W/ EXCELLENT COLOR & IRID.)
172. European Prism Panels ftd. Vase - Mari. (very scarce; w/ excellent color & irid.)
173. English Vining Leaf ftd. Vase - Mari. (very scarce w/ nice average color)
174. Brockwitz Triads (and Towers) Vase - Mari. (scarce cylinder vase w/ grat irid.)
175. 6" Tall Argentinian Laurel Band & Arches Vase - Mari. (odd & rare item; flared w/ nice dark color)
176. European Sunflower & Diamonds Vase - Dk. Ma (scarce w/ nice dark color & irid.)
177. Odd Stippled Spearhead Lg. Bottle Vase - Mari. (rare & unusual item; nice)
178. 8" European Sowerby Intagloo Grape & Cherries Round Bowl - Mari. (scarce patten; nice & unusual)
179. Phoenix Lacy Dewdrop Small Covered Compote - Mari. / Milk Glass (rare & desirable; has nice light Mari. overlay)
- 425 180. CAMBRIDGE SMALL SIZE BUZZ SAW CRUET & STOPPER - GREEN (EXCELLENT COLOR & IRID.)
181. 8" M'burg Mayan I.C. Shaped Bowl - Green (radium & desirable)
182. Jenkins Cut Flowers Lg. Cylinder Vase - Mari. (dark color w/ nice irid.)
183. 9 1/2" Westmoreland Louisa ftd. Plate - Amyth. (scarce item in this shape)
184. 7 3/4" U.S. Glass Cosmos & Cane Master Berry Bowl - Honey Amber (nice color & pastel irid.)
185. U.S. GLASS COSMOS & CANE ROSE BOWL W/ HEADRESS INT. - MARI. (RARE & DESIRABLE; DARK COLOR & NICE)
186. Dugan Vintage Grape Powder Jar Base - Dk. Mari. (super irid.)
187. Dugan Honeycomb Rose Bowl Spittoon Whimsey - Crystal Green/ (nice w/ attractive frit)
188. 5 1/4" TALL DUGAN ESTATE TRI-CORNERED PINCHED IN VASE - SMOKEY GRAY FLASH - (RARE ITEM IN A RARE COLOR; VERY UNUSUAL)
189. Dugan Nautilus Novelty Creamer - Purp. (scarce & desirable silvery irid.)
190. 5 1/4" TALL DUGAN WOODLANDS VASE - DK. MARI. (RARE & VERY DESIRABLE PATTERN; NICE)
191. 7 1/2" Tall Dugan Interior Swirl Bulbous Top Tri-Corner Vase - P. Opal. (nice color, irid. & opal edge)
192. 10 1/4" Tall Dugan Big Basketweave Swung Vase - White (very scarce; frosty w/ excellent color & irid.)
193. 9" Tall Dugan Lined Lattice Swung Vase - White (scarce; frosty & nice)
194. 9 3/4" Tall Dugan Target Swung Vase - P. Opal. (nice opal & overlay)
195. DUGAN MARY ANN 2 HANDLED VASE - PURP. (SCARCE COLOR W/ A NICE SATINY FINISH)
196. 9 1/2" Tall Dugan Pulled Loop Swung Vase - Purp. (scarce w/ super color & irid.; nice)
197. 10 3/4" Tall Dugan Spiralx Swung Vase - Purp. (scarce w/ super color & irid.; really nice)
198. 12" Tall Dugan Spiralx Swung Vase - Amyth. (nice satiny irid.; scarce variation)
199. 12" Tall Dugan Spiralx Swung Vase - White (scarce w/ a bright irid.)
- 500 200. 4 1/4" TALL DUGAN BEAUTY TRI-CORNERED VASE - PURP. (VERY RARE & VERY DESIRABLE; REALLY DESIRABLE)
201. 10" Tall Dugan Lined Lattice Swung Vase - Dk. Mari. (super, super color & irid.)
202. 5" Tall Dugan Big Basketweave Squatty Vase - Mari. (rare unswung variation)
203. Dugan Beaded Shell Handled Mug - Mari. (very scarce; nice color)
204. Dugan Honeycomb Rose Bowl - P. Opal (scarce & underpriced; really nice example)
205. 6 3/4" DUGAN FOLDING FAN STEMMED CRIMPED EDGE PLATE - P. OPAL. (RARE SHAPE FOR THIS PATTERN; SUPER OPAL. & IRID.)
206. Dugan Floral & Grape Bulbous Water Pitcher - Amyth (perfect w/ a bright finish)
207. 9" Dugan Round Up low Ruffled Bowl Plate - White (scarce & frosty; nice irid.)
208. 9 1/4" Dugan Round Up Bowl w/ 3 in 1 Edge - White (scare w/ really nice irid.)
209. 11" Dugan Persian Garden Lg. I.C. Bowl - White (scarce; frosty w/ nice average irid.)

210. Dugan Cherry Wreath Lg. Oval Master Berry Bowl - White (very scarce w/ super irid.)
211. **8 1/4" DUGAN BROOKLYN BRIDGE 10 RUFFLED BOWL - MARI. (RARE & DESIRABLE W/ BRIGHT IRID.)**
212. **DUGAN PEACOCK AT THE FOUNTAIN 7 PC. WATER SET - BLUE (SCARCE SET W/ REALLY ATTRACTIVE IRID.)**
213. Dugan Daisy & Lattice 7 pc. Tankard Water Set - Mari. (nice set w/ average irid.)
214. Dugan Stork in the Rushes Tumbler w/ Beaded Top - Blue (nice irid.)
215. **11 1/4" DUGAN VICTORIAN LG. 8 RUFFLED BOWL - PURP. (RARE PATTERN W/ A NICE BRIGHT SATINY FINISH)**
216. 8 3/4" Dugan Fanciful low Ruffled Bowl / Plate - Amyth. (scarce item w/ a bright satiny finish)
217. Dugan Cherry Wreath Spooner - Purp. (super example; nice)
218. Fenton Kittens 6 Ruffled Bowl - Dk. Mari. (dark color w/ nice detail)
219. Fenton Kittens 4 Ruffled Toothpick Holder - Dk. Mari. (scarce w/ really nice color & rid.)
220. **FENTON KITTENS CUP & SAUCER - DK. MARI. (VERY DESIRABLE W/ GREAT COLOR & IRID.)**
221. (6) 5 3/8" Fenton Persian Medallion Deep Round Flared Sauces - Green (selling so much each for set)
222. Fenton Persian Medallion Small size 6 Ruffled Stemmed Compote - Blue (very scarce item w/ nice color & irid.)
223. Fenton Scotch Thistle Stemmed 6 Ruffled Crimped Edge Compote - Green (scarce w/ nice irid.)
224. Fenton Interior Ribbed Stemmed Spittoon Vase - Amber (scarce base color)
- 450 225. **9 1/2" FENTON PEACOCK AT THE URN FLAT PLATE - BLUE (VERY DESIRABLE W/ REALLY EXCELLENT IRID.; VERY NICE)**
226. 9" Fenton G&C ftd. Flat Plate - Green (excellent example; dark & nice)
227. 6 1/2" Fenton Peacock & Dahlia I.C. Shaped Bowl - Mari. (scarce shape; nice satiny finish)
228. Fenton Orange Tree 2 Handled Loving Cup - Mari. (very scarce item; perfect w/ nice color)
229. Fenton Orange Tree ftd. Hatpin Holder - Blue (scarce & very desirable; dark color & irid.)
230. **FENTON ORANGE TREE 7 PC. RUFFLED PUNCH SET - BLUE (VERY SCARCE & DESIRABLE; NICE)**
231. **FENTON ORANGE TREE FTD. RUFFLED FRUIT BOWL - BLUE (SUPER EXAMPLE W/ BRIGHT MULTI-COLORED IRID.)**
232. 6" Fenton Panther 6 Ruffled ftd. ind. Berry Bowl - Blue (really nice example; attractive)
233. 7" Fenton Mirrored Lotus 6 Ruffled Bowl - Blue (scarce pattern w/ satiny finish)
234. Fenton Persian Medallion Hair Receiver - Dk. Mari. (super dark color & irid.)
235. **FENTON WREATH OF ROSES 11 PC. PUNCH SET W/ PERSIAN MEDALLION INT.- MARI. (VERY SCARCE & DESIRABLE SET W/ EXTRA CUPS)**
236. Fenton Bouquet 7 pc. Bulbous Water Set - Dk. Mari. (very desirable set w/ great color)
237. Pair 8 3/4" Tall Fenton Florentine Candlesticks - Grecian Gold (nice pair)
238. 5 1/2" Tall Fenton Butterfly & Berry Squatty Flared Vase - Blue (rare size w/ a satiny finish)
239. 7 1/4" Tall Fenton 3 Diamonds & Bows Swung Vase - Blue (nice example & perfect)
240. 11 3/4" Tall Fenton Fine Rib Mid-size Swung Vase - Red (rare base color; darker w/ a silvery irid.)
241. 12 1/2" Tall Fenton Knotted Beads Tall Swung Vase - Green (very scarce w/ excellent color)
242. 12" Tall Fenton Knotted Beads Tall Swung Vase - Dk. Mari. (dark & very desirable; really nice)
243. 11 1/2" Tall April Showers Swung Vase - Amyth. (nice color)
244. 12" Tall April Showers Swung Vase - Dk. Mari. (nice color)
245. 16" Tall Fenton Rustic Mid-size Swung Vase - Dk. Mari. (dark w/ a really nice swing)
246. 13 1/4" Tall Fenton Diamond Point Columns (?) Mid-size Swung Vase - Mari. (scarce; satiny)
247. **11 3/4" TALL FENTON PLUME PANELS SWUNG VASE - OXBLOOD (VERY RARE BASE COLOR; A DARK BASE GLASS)**
248. 9 1/2" Tall Fenton Rustic Standard Swung Vase - Mari.
249. Fenton Miniature Blackberry Miniature Compote - Blue (scarce; silvery & satiny)
250. **FENTON 2 ROW OPEN EDGE 2 SIDED HAT - RED (VERY SCARCE; HAS A DARK BASE COLOR)**
251. 8 1/2" Fenton Wild Blackberry Bowl w/ 3 in 1 edge - Mari. (scarce pattern; a lighter color)
252. 8 3/4" Fenton Leaf Chain 6 Ruffled Bowl - White (frosty w/ really nice irid.)
253. 8 5/8" Fenton Holly low I.C. Shaped Bowl - Green (very scarce base color in this shape; darker & satiny)
254. 9 1/2" Fenton Stippled Rays Large domed I.C. Shaped Bowl - Green (very scarce item)
255. Fenton Vintage Small-size 2 pc. Epergne - Green Base / Blue Lily (2 different colors; nice parts to have)
256. Fenton Wild Blackberry Stemmed 6 Ruffled Compote - Green (satiny)
257. Fenton Orange Tree ftd. Ruffled Master Berry Bowl - Dk. Mari. (super color & great irid.)
258. 8 1/2" Fenton Vintage Grape Bowl w/ 3 in 1 Edge - Amyth. (satiny finish)
259. 8" Westmoreland Pearly Dots 6 Ruffled Bowl - Aqua. (nice item)
260. **WESTMORELAND LEAF SWIRL STEMMED 6 RUFFLED COMPOTE - AMBER (VERY SCARCE BASE COLOR; NICE)**
261. 8 1/4" Westmoreland Smooth Rays 6 Ruffled Bowl - P. Opal. (super example; great color & opal.)
262. 8" Imperial Sand & Shell 8 Ruffled Bowl - Helios Green (bright silvery irid.)
263. 7" Imperial Heavy Grape 8 Ruffled Bowl - Lt. Gray/ Dk. Mari. (super irid.)
264. Imperial Ribbed J.I.P. Vase - Dk. Mari. (super irid.)
265. Dugan Fishermans Handled Mug - Purp. (dark; sorta silvery)
266. 9" Dugan Wildflower 10 Ruffled Bowl - Blue (nice color)
267. 7" Dugan Grapevine Lattice low 8 Ruffled Bowl/Plate - White (frosty w/ fair irid.)
268. 7 1/2" Dugan Garden Path Variant Deep Round Bowl - Mari. (scarce shape)
269. Dugan Windflower Tri-Cornered one Handled Nappy - Mari. (scarce)
270. 11" Tall Dugan Spinalx Swung Vase - Clear Opal (not carnival; nice opal.)
271. Odd Melon Rib Swirl Handled Milk Pitcher - Dk. Mari. (unusual item; great color & irid.)
272. I.G. Hobster Covered Sugar Bowl - Dk. Mari. (newer; nice)
273. Dugan Stork in the Rushes Sugar lid only - Mari. (rare part if needed)
274. N'wood Concave Diamonds Tumbler - Celeste Blue (nice base color)
275. Fenton Pastel Swan Master Salt - Ice Green (nice color)
276. Fenton Butterfly & Berry 7 pc. Water Set - Mari. (quite a nice set w/ a bright Satiny finish)
277. Fenton Enameled Magnolia Handled "Cannonball" Water Pitcher - Mari. (scarce item w/ nice decor)
278. Fenton Two Fruits 2 Handled Round Divided Candy Dish - Dk. Mari. (scarce pattern w/ nice satiny irid.)
279. 10" Fenton Little Flowers Lg. 6 Ruffled Bowl - Amyth. (nice satiny finish)
280. Fenton Holly Stemmed 6 Ruffled Compote - Blue (a really nice example - attractive)
281. 1982 ICGA Elkhart Convention Frolicking Bears Ruffled Spittoon - Red
282. 1984 ACGA Canandaigua Convention Seacoast Spittoon - Red
283. 1999 ACGA New Philidelphia Convention Seacoast Spittoon - Blue
284. 1990 ICGA Cedar Rapids Convention Enameled Covered Compote - Green (decorated at Fenton)
285. 2000 ICGA Des Moines Convention Souvenir Mellon Ribbed Ruffled Vase - Blue

— **BURNS AUCTION SERVICE** —

Tom Burns
P.O. Box 608
Bath, New York 14810
(607) 346-5290

Bill & Billy Richards
44 Water Street, Poland OH 44514
(330) 757-2001
FAX (330) 757-4917

Steve Muller
Rt 415 S.
Bath, New York 14810
(607) 776-3860

Mail Bids honored under the following conditions:

1. No deposit required. Bidders will take full responsibility to honor any and all bids we execute for them. Payment in full plus postage and handling required after notification and before we ship any item to them.
2. Items are bid on in perfect condition with average or above average iridescence OR as listed in the brochures. Bids will not be carried out when damage on an item has been found during the auction. **PEOPLE PRESENT AT THE AUCTION ARE RESPONSIBLE FOR FINDING ANY PINHEADS, WEAR, SPOTTINESS, MANUFACTURER'S DEFECTS OR ANY OTHER MINOR FLAWS, ETC.**
3. Successful bidders will be notified by collect call from the auctioneer **SO BE SURE TO INCLUDE PHONE NUMBER.**
4. Phone inquiries about the glass or any other questions are welcome.
5. If you have some other person at the auction bidding for you, they must pay for the item before taking it.
6. Any terms or conditions given the day of the auction will supersede any previously published information.
7. Mail, e-mail, fax and phone bids are due by Friday, October 21, 2005

For photos of just about every item in every auction visit our website at:
<http://www.billrichardsauctioneers.com>

Accepting Visa • MasterCard • Discover • American Express both at Auctions and through Mail Bids!
A 3% Clerking Fee will apply on all purchases except those by cash or check.

Burns Auction Service

P.O. Box 608
Bath, New York 14810

First Class
US Postage
PAID
Permit No. 7
Hammondsport, NY

2005 Mid Atlantic Jamboree Auction!



Lots #112 #113 #114

LEE MARKLEY
BOX 306
MENTONE IN 46539

46539 46539 46539

