

AIR CAPITAL CARNIVAL GLASS CONVENTION AUCTION

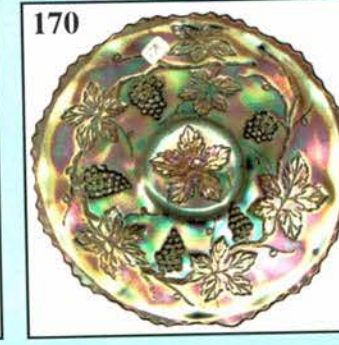
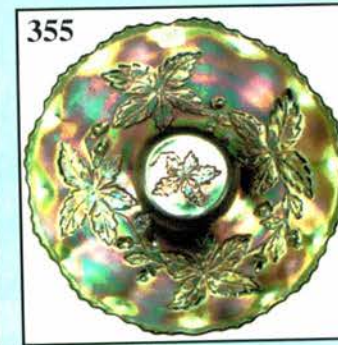
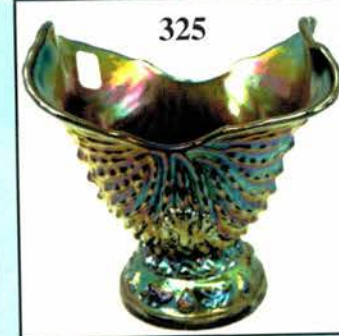
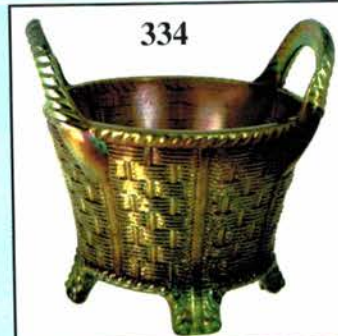
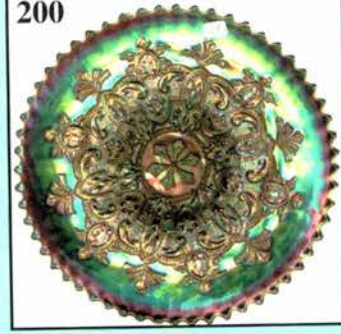
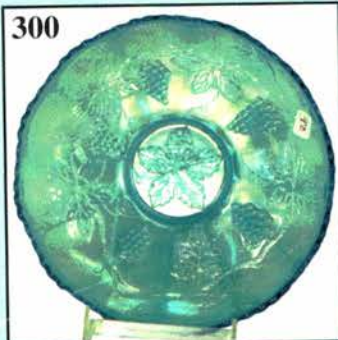
 Held In Wichita, Kansas

SESSION I - Friday Evening, October 14, 2005 - 6:30 p.m.

SESSION II - Saturday, October 15, 2005 - 9:00 a.m.

Conducted by the Mickey Reichel Auction L.C.

Website: www.AWK-SHN.com



 24TH ANNUAL CONVENTION

★ ★ ★ PUBLIC WELCOME ★ ★ ★

Held at Holiday Inn • 5500 West Kellogg St. • Wichita, Kansas

☛ **Convention Information: Don Kime - 316-733-8424**

Preview Friday: 5:00 p.m. to 6:30 p.m. - Saturday: 7:30 a.m. to 9:00 a.m.

☛ **WEB SITE: www.AWK.SHN.com**

ABSENTEE BID POLICY:

WRITE IN BIDS: If you are unable to attend the auction, we will be happy to accept absentee bids which must be received by WEDNESDAY, OCTOBER 12, 2005. **DON'T DELAY.** E-Mail: mreichel@AWK-SHN.com

FOR AUCTION PRICE RESULTS: Send \$3.00 and Large S.A.S.E. to 18350 Hunters Ridge Ct., Boonville, MO 65233-2971

PLEASE NOTE: There is a **\$5 handling charge for each successful bid which will be added to the selling price** for all write-in bids. This is in addition to the cost of postage, insurance and packing. Your write-in bid will be entered just as if you are present and bidding. **Successful bidders will be notified in 1 to 3 days by the auctioneer (so be sure to include your phone number).** Direct mail bids to Auctioneer Mickey Reichel, 18350 Hunters Ridge Ct., Boonville, MO 65233-2971. Terms: Cash or Check accepted with proper I.D. and Social Security Number and References. Announcements made day of the auction supercede all printed material. Not Responsible for Accidents or Sold Items.

☛ **No return on any items once they leave the Auction Center (No Exceptions).******

Call for additional information: 660-882-5292 days or 660-882-5283 evenings before 9:00 p.m.

FAX: 660-882-5292 (evening hours start FAX transmission after beep)

MAIL BIDS: Items are bid on in perfect condition with average or above iridescence OR as listed in the brochures. Bids will not be carried out when damage on an item has been found during the auction.

☛ **PEOPLE PRESENT AT AUCTION ARE RESPONSIBLE FOR FINDING ANY PINHEADS, WEAR, SPOTTINESS, MANUFACTURER'S DEFECTS OR ANY OTHER MINOR FLAWS, ETC. *******

☛ **NOTE: Read each line, as we have accentuated the type of no particular piece, all are special.**

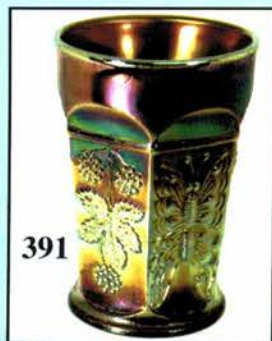
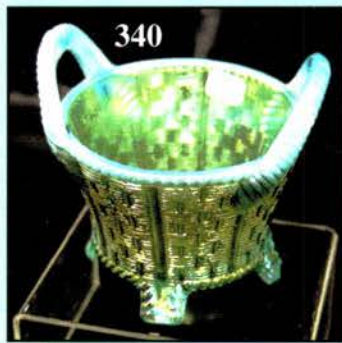
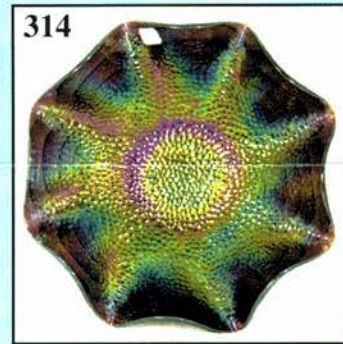
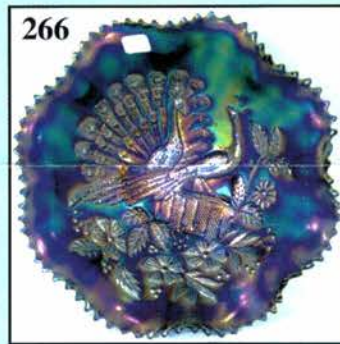
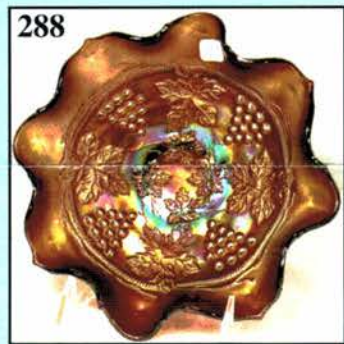
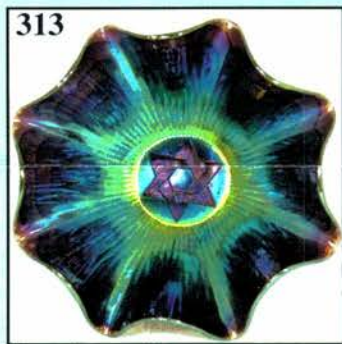
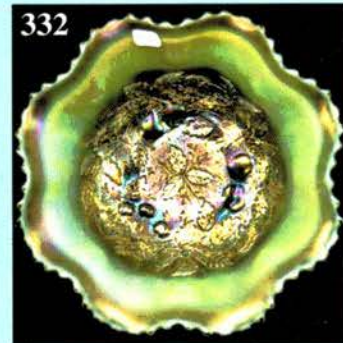
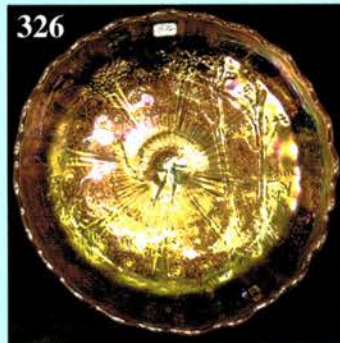
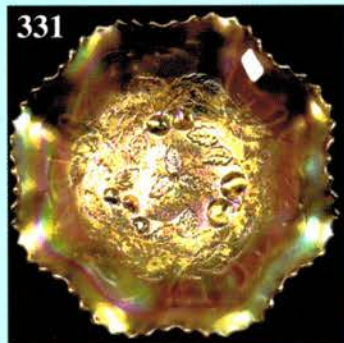
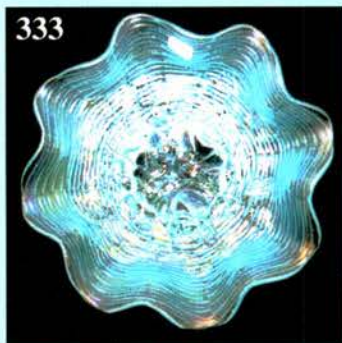
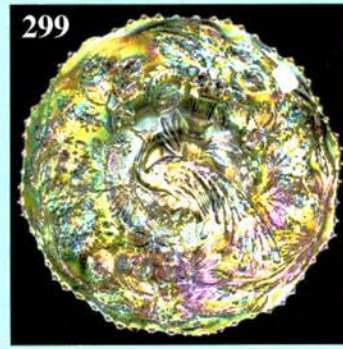
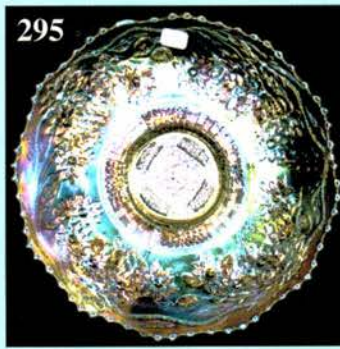
Session I: Preview Begins At 5:00 p.m. Contemporary Carnival Friday, October 14 at 6:30 pm.

- _____ 1. IB - Grape/Cable Butter Dish w/Lid
- _____ 2. **Red - Fenton Butterfly Bonbon**
- _____ 3. Red - Fenton Persian Medallion Compote
- _____ 4. **IB - Fenton Persian Medallion Compote**
- _____ 5. White - J.S.T.C. Grape/Cable Tumbler
- _____ 6. **Red - J.S.T.C. Grape/Cable Tumbler - Scarce**
- _____ 7. Red - I.C.G.A. 1977 Club Town Pump
- _____ 8. **G - I.C.G.A. 1978 Club Town Pump**
- _____ 9. P - I.C.G.A. 1970 Club Town Pump
- _____ 10. **Dk. M - I.C.G.A. 1980 Club Town Pump**
- _____ 11. P - A.C.G.A. 1997 Hobstar/Feather Miniature Punch Set
- _____ 12. **Red - H.O.A.C.G.A. 1991 - Peacock/Dahlia, 6-1/2" Plate**
- _____ 13. Red - H.O.A.C.G.A. 1973-1993 Good Luck, 6-1/2" Plate
- _____ 14. **Red - I.C.G.A. 1994, 4-1/2" JIP, Diamond/Rib Squatty Vase**
- _____ 15. Elec. B - H.O.A.C.G.A. 2000, 9" Pansy Plate
- _____ 16. Amber - I.C.G.A. 1993 Frolicking Bears, Texas Shot Glass
- _____ 17. Plum Opal - I.C.G.A. 1997 Frolicking Bears, Texas Shot Glass - Very Scarce
- _____ 18. **Elec. G - I.C.G.A. 1992 Lions, 9" Cake Plate - Beautiful**
- _____ 19. Powder B - Fenton Lions Rose Bowl
- _____ 20. **Red - H.O.A.C.G.A. 1978 Corn Vase**
- _____ 21. Ice B - H.O.A.C.G.A. 1982 Corn Vase
- _____ 22. **Red - H.O.A.C.G.A. 1977 Good Luck Hatpin Holder**
- _____ 23. Frosty IG - H.O.A.C.G.A. 1980 Good Luck Hatpin Holder
- _____ 24. **Vas. Opal - H.O.A.C.G.A. 2001 Good Luck Hatpin Holder**
- _____ 25. Emerald G - H.O.A.C.G.A. - 2002 Good Luck Hatpin Holder
- _____ 26. **Cobalt B - I.C.G.A. 1984 Lions/Orange Tree Rosebowl**
- _____ 27. Red - Fenton Orange Tree Rosebowl - Base Nick
- _____ 28. **Red - H.O.A.C.G.A. 1979 Good Luck Loving Cup**
- _____ 29. Mover Custard - H.O.A.C.G.A. 1983 Good Luck Loving Cup
- _____ 30. **White - H.O.A.C.G.A. 1998 Good Luck Loving Cup**
- _____ 31. Red - H.O.A.C.G.A. 1984 Good Luck Fernery Bowl

- _____ 32. **G - 1977 Levay #378/448 Sunflower Pin Tray**
 _____ 33. Peach Opal - A.C.G.A. 1982 Seacoast Cuspidor
 _____ 34. **G - A.C.G.A. 1983 Seacoast Cuspidor**
 _____ 35. Sapphire - A.C.G.A. 1985 Seacoast Ruffled Cuspidor
 _____ 36. **Opaque Ice Green - A.C.G.A. 1998 Seacoast Cuspidor**
 _____ 37. Blue - A.C.G.A. 1999 Seacoast Cuspidor
 _____ 38. **Lav. Ice - A.C.G.A. 2000 Seacoast Cuspidor**
 _____ 39. Vas. Opal - A.C.G.A. 2001 Seacoast Cuspidor
 _____ 40. **Ice G. Opal - A.C.G.A. 2002 Seacoast Cuspidor**
 _____ 41. Red - I.C.G.A. 1982 Ruffled, Frolicking Bears Cuspidor
 _____ 42. **RARE Vas. Opal - I.C.G.A. 1983 Ruffled, Frolicking Bears Cuspidor**
 _____ 43. G. Opal - I.C.G.A. 1998 Frolicking Bears Cuspidor
 _____ 44. **Vas. Opal - I.C.G.A. 2001 Frolicking Bears Cuspidor**
 _____ 45. Celeste B - I.C.G.A. 1995, 11" Acanthus Plate
 _____ 46. **Vas. - Peacock/Daisy 7 pc. Mini Water Set**
 _____ 47. I.B. - Peacock/Daisy 7 pc. Mini Water Set - NEAT
 _____ 48. **Dk. P - Fenton Hanging Cherries Creamer/Sugar**
 _____ 49. Dk. P - Fenton Orange Tree Candlesticks
 _____ 50. **Dk. P - Owl Candy Dish, Signed A.L.I.G. w/Glass Eyes**
 _____ 51. Dk. P - Owl, Little Cream/Sugar, Signed I.G. w/Glass Eyes
 _____ 52. **Amber - I.G. Two Mammy Shakers**
 _____ 53. Blue - I.G. Mammy/Pappy Shakers
 _____ 54. **Blue - 1980 Robert Henry Elephant Paperweight**
 _____ 55. Black Knight - Robert Henry, 1981 Elephant Paperweight
 _____ 56. **Red - Robert Henry, 1981 Elephant Paperweight**
 _____ 57. Smoke - I.G. Grape Salt/Pepper Set
 _____ 58. **M - I.G. Grape Salt/Pepper Set**
 _____ 59. Smokey Amber - I.G. Grape Salt/Pepper Set
 _____ 60. **B - Westward Ho Goblet**
 _____ 61. Sapphire Opal - Westmoreland Shells Vase w/Dolphin Feet
 _____ 62. **P - 1969 Presznick's Museum Grape/Cable Tobacco Jar - 36 Years Old**
 _____ 63. Red - Fenton Grape/Cable Stippled Tobacco Jar
 _____ 64. **B - Westmoreland Chick/Eggs Covered Candy Dish w/Glass Eyes**
 _____ 65. Lime - Non Irid. Proud Puss Decanter
 _____ 66. **Smoke - I.G. Large Loganberry Vase**
 _____ 67. Red - Fenton 10" Ruffled Cherry Chain Bowl
 _____ 68. **Red - Fenton 1994, #421, Signed Tom Fenton, Lions Ftd. Basket - Scarce**
 _____ 69. Aqua Opal - Fenton 1993, 5th Anniversary Pitcher - 8 Fenton Signatures - Rare
 _____ 70. **B.A. - Fenton 7" Cherry Chain Rosebowl**
 _____ 71. Red - D.B.S. 9" Crimped Edge Farmyard Bowl - Scarce
 _____ 72. **Vas. Opal - D.B.S. 10-1/2" C.R.E. Ruffled Farmyard Bowl**
 _____ 73. IG - Opaque D.B.S. 11" C.R.E. Farmyard Chop Plate
 _____ 74. **Red - S. Baily, Large Poppy Vase - Scarce**
 _____ 75. Vas. Opal - S. Baily, Large Poppy Vase
 _____ 76. **Plum Opal - S. Baily, Large Poppy Vase**
 _____ 77. Em. G - S. Baily, Large Poppy Vase
 _____ 78. **Ice B Opaline - S. Baily, Large Poppy Vase**
 _____ 79. Red - JIP (Tulip Top) S. Baily, Large Poppy Vase
 _____ 80. **Blue - JIP (Tulip Top) S. Baily, Large Poppy Vase**
 _____ 81. Peach Opal - Fenton Atlantis Fish Vase - Ruffled Top
 _____ 82. **Vas. Opal - Fenton Atlantis Fish Vase - Straight Top**
 _____ 83. M - Honeycomb - Kerosene Lamp w/Matching Chimney
 _____ 84. **M - I.G. Hobnail Kerosene Lamp w/Clear Chimney w/Hobs**
 _____ 85. Red - 1984 Poppy Rose Presznick Kerosene Lamp
 _____ 86. **Red - Quilted Diamonds Mini Lamp w/Shade**
 _____ 87. Sapphire B - Fenton 23" Tall, G.W.T.W. Elec. Lamp - Poppy Pattern
 _____ 88. **Vaseline - Lustre Rose, 5 pc. Water Set, Signed A.L.I.G. - Rare**
 _____ 89. Vas. Opal - Cherry Cable, 5 pc. Water Set - Non Irid.
 _____ 90. **Blk. A - Cherry/Lattice Water Pitcher w/One Tumbler**
 _____ 91. Ice B - WM Checkerboard Water Pitcher w/Tumbler
 _____ 92. **Ice B - Tigerlily Water Pitcher w/Tumbler, Signed I.G.**
 _____ 93. Ice B - Robins Water Pitcher Only - Signed L.I.G.
 _____ 94. **Ice B - In God We Trust Water Pitcher Only**
 _____ 95. Pink - Tiger Lily 7 pc. Water Set - Signed L.I.G.
 _____ 96. **BA - Beaded Shell, Mosser 7 pc. Water Set**
 _____ 97. Red - H.O.A.C.G.A. 1974 Good Luck 7 pc. Water Set
 _____ 98. **B.A. - Cherry/Lattice Butter Dish, Creamer, Sugar**

Session II
Saturday, October 15 @ 9:00 a.m.

- _____ 99. G - Fenton 7" Diamond Rib Squatty Vase
 _____ 100. **A - Fenton 9-1/4" Diamond Rib Vase**
 _____ 101. A - Fenton 11-1/4" Diamond Rib Vase - Pretty
 _____ 102. **M - Imp. 11-1/4" Ripple Vase - Unusual Base Tint**
 _____ 103. Rich Amber - Fenton 12-1/4" Fine Rib Vase - Very Scarce
 _____ 104. **Beautiful B - Fenton 9-1/2" Butterfly/Berry Vase**
 _____ 105. G - N 7-1/4" Fine Rib Squatty Vase
 _____ 106. **Scarce G - 15-1/2" Rustic Vt. Mid-Size Vase - 4" Base, 5-1/2" Opening**
 _____ 107. Favorite M - Imp. 5-1/2" Thin Rib/Drape Mini Vase
 _____ 108. **Frosty W Base - Imp. Iron Cross Mark, 13-1/2" Int. Flute Funeral Vase w/Marigold Top - 4-1/2" Base, 6-1/2" Top - Really Neat Vase**
 _____ 109. M - Imp. 9" Ripple Vase, 3-3/8" Base, 5-1/2" Opening - Extra Nice
 _____ 110. **Scarce W - 10" Rustic Fenton Vase**
 _____ 111. Beautiful M - Sunflower/Diamonds 9-1/2" Vase
 _____ 112. **A - 10-3/4" Dugan Pulled Loop Vase**
 _____ 113. G - Fenton 9-3/4" Diamond Rib Vase
 _____ 114. **M - English 5-3/4" Thistle Pattern Vase**
 _____ 115. M - Europ. 5-1/2" Vase - Pattern ?? - See Photo
 _____ 116. **P - Imp. 12" Freefold Vase - Radium Beauty**
 _____ 117. Elec. P - Imp. 11-3/4" Ripple Vase - 3-3/8" Base, 4-1/4" Opening
 _____ 118. **Scarce Aqua - Imp. 10-3/4" Ripple Vase - Radium**
 _____ 119. Olive? - Dugan 11" Pulled Loop Vase - Most Unusual Base Color - Very Pretty



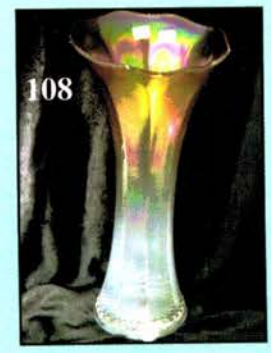
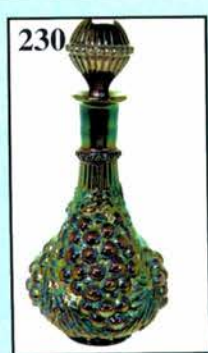
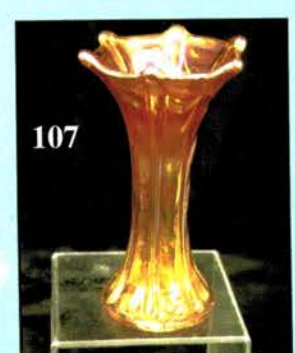
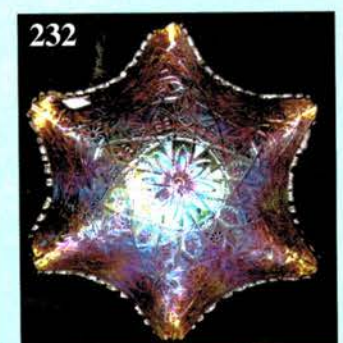
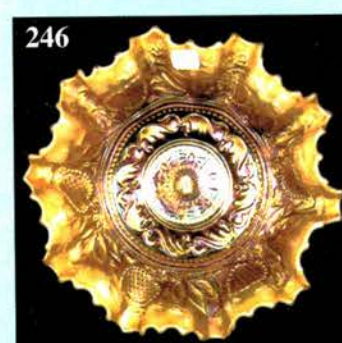
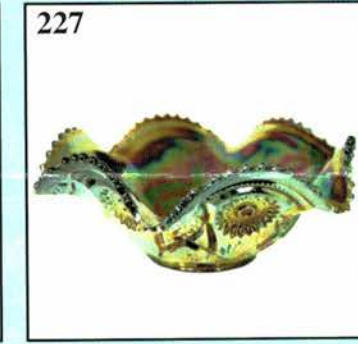
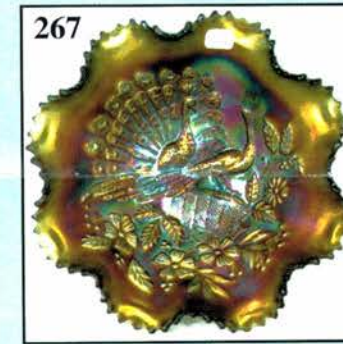
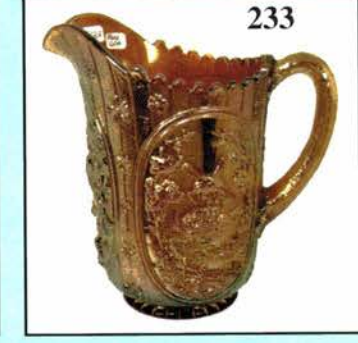
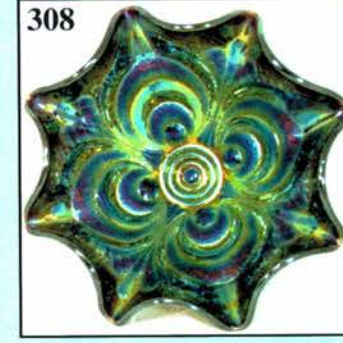
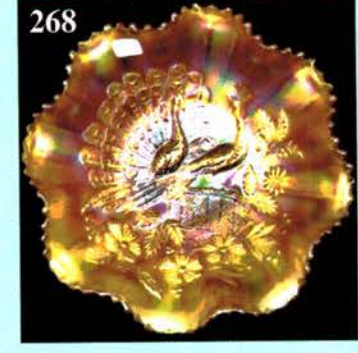
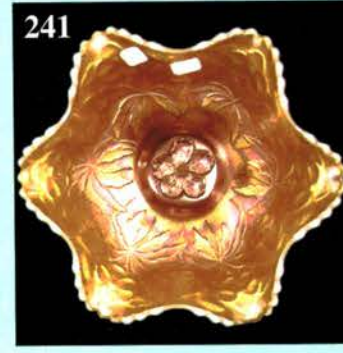
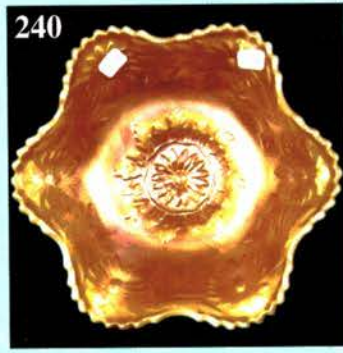
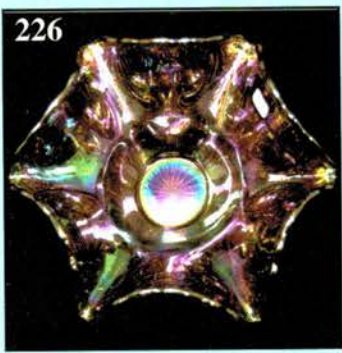
- _____ 120. **Yellow Vas. - Fenton 12" Fine Rib Vase - Marigold Overlay - Glows**
- _____ 121. Yellow Vas. - 9-1/4" Fine Rib Vase - Marigold Overlay - Glows
- _____ 122. **Rich Honey Amber - Fenton 10-1/2" Thin Rib Vase - Very Different - Neat Base Color**
- _____ 123. Pumpkin M - 10" Jain Fish Vase - Outstanding Example
- _____ 124. **M - 6-5/8" Jain Elephant Vase**
- _____ 125. M - 5-1/2" Jain Diamond/Heart Vase
- _____ 126. **G - N 9-1/4" Tree Trunk Vt. Vase - M Overlay**
- _____ 127. M - Large, Intaglio Daisy Rosebowl - Neat Incised Flowers
- _____ 128. **M - Large Mikado ICS Compote**
- _____ 129. G - Signed Near Cut 9-1/2", 8 Ruffle Inverted Strawberry Bowl
- _____ 130. **Scarce G - N 8-3/4" Rosette ftd. Bowl - Seldom Seen**
- _____ 131. Rich M - N 8-1/2" Ruffled Strawberry Bowl
- _____ 132. **P - N Leaf Beads, ftd. Rosebowl - Sunflower Interior Loaded w/Irid.**
- _____ 133. P - N Singing Birds Mug - Always Desirable
- _____ 134. **Scarce Amber - Fenton Strawberry Bonbon - Great Example**
- _____ 135. Yellow Vas. - JIP, CRE, Fenton Holly Hat - WOW!
- _____ 136. **Pumpkin M - Fenton 9" ftd, ICS Waterlily Bowl - Loaded w/Pinks**
- _____ 137. W - Fenton 9", 6 Ruffle Holly Bowl - Extra Nice
- _____ 138. **Radium Soft M - Mlbg. Ruffled Nesting Swan Bowl - Rim Chips**
- _____ 139. P - Mlbg. 10" Ruffled Rays/Ribbons Bowl - Pretty Satin
- _____ 140. **P - Imp. 6-1/2" Round, Deep, Open Rose Bowl - Eye Catcher**
- _____ 141. Dk. M - Imp. Large Fashion Rosebowl
- _____ 142. **P - Imp. 5" Scalloped, Snow Fancy Berry Bowl - First I've Seen**
- _____ 143. RARE G - Imp. 12", Octagon, Sq. Shaped Bowl (Center Piece) - Few Known
- _____ 144. **Dk. Olive - Imp. Open Rose Fernery Bowl**
- _____ 145. Gorgeous P - Imp. 8-3/4" Heavy Grape Bowl
- _____ 146. **Unusual B - Imp. 9" Round, Flared, Lustre Rose Bowl - Neat Color**
- _____ 147. Lav. - Dugan 8-3/4", 10 Ruffle Double Stemmed Roses Bowl
- _____ 148. **Clam - Imp. 9-1/4" Hobstar/Arches Bowl - Tooth Chipped - Still A Beauty**
- _____ 149. M - Imp. Grape 9" Ruffled Bowl
- _____ 150. **M - Imp. Scroll Embossed Ruffled Compote**
- _____ 151. M - Fenton 5-1/2" Round Peacock Tail Bowl
- _____ 152. **G - Fenton 6-1/2" Ruffled Peacock Tail Hat Shape Bowl**
- _____ 153. G - Fenton 10", 6 Ruffle Peacock Tail Bowl - Displays Beautiful - Low Ruffle
- _____ 154. **A - Fenton 6-1/2" Ruffled Peacock Tail Hat Shape Bowl**
- _____ 155. G - Fenton 5-1/2" Little Flowers Bowl - Very Pretty
- _____ 156. **M - Fenton 9" Ruffled Peacock at Urn Bowl - Sharp Tip**
- _____ 157. M - Fenton 9" Collar Base Ruffled Peacock/Grape Bowl
- _____ 158. **M - Fenton Spat., Ftd., 7-1/4" Peacock/Grape Nut Bowl - SCARCE**
- _____ 159. Rich M - Fenton Spat., Ftd., 8" ICS Stag/Holly Bowl - Very Nice
- _____ 160. **G - Fenton 6" Stippled Rays Tri Corner Plate**
- _____ 161. Dk. A - Fenton 9" Spat., Ftd., Grape/Cable Plate
- _____ 162. **Radium M - Fenton 9-3/4" Holly Plate - Unusual Irid. - Different Effect**
- _____ 163. B - Fenton 9-1/4" Holly (Turned Up) Plate - Very Unusual
- _____ 164. **Scarce A - Fenton 6" Ruffled Holly Hat Shape Bowl**
- _____ 165. Pretty G - Fenton 9", 8 Ruffle Holly Bowl
- _____ 166. **G - Fenton 5-1/2" Ruffled Pepper Plant, Hat Shaped Bowl**
- _____ 167. G - Fenton 7" Ruffled Vintage Grape Bowl
- _____ 168. **M - Fenton 7" Ruffled Vintage Grape Bowl**
- _____ 169. Pretty M - 9" Fenton, Low Ruffle, Vintage Grape Plate
- _____ 170. **RARE A - 9" Fenton Vintage Grape Plate - Flat**
- _____ 171. IG - Fostoria Brocaded Daffodils, 7-1/2", 2 Handle Plate
- _____ 172. **IB - Fostoria Brocaded Acorns, 7", 2 Handle Plate**
- _____ 173. IB - Fostoria Brocaded Acorns, 7", 2 Sides Up Bonbon
- _____ 174. **IG - Fostoria Brocaded Palms, 7", 10 Sided, 2 Handle Plate**
- _____ 175. Pink - Fostoria Brocaded Palms, 6-1/2", 10 Sided, 2 Handle Bowl
- _____ 176. **M - Fenton 5-1/2" JIP, 2 Row, O.E. Basket - Dark Irid.**
- _____ 177. **Scarce A - Fenton 5-3/4", 2 Row O.E. Ruffled Blackberry Hat Shape**
- _____ 178. **M - Fenton 6", 2 Row, O.E., 2 Sides Up Hat Shape Adv. Millers' Furniture**
- _____ 179. M - Fenton 6-1/4" Round, Scalloped Peacock/Dahlia Bowl - Extra Nice
- _____ 180. **A - Fenton 9", 3 in 1 Edge Coin Dot Bowl**
- _____ 181. B - Fenton 6-1/4" Blackberry Banded Hat
- _____ 182. **Lav. - Fenton 9" Ruffled Collar Base Dragon/Lotus Bowl**
- _____ 183. Scarce G - Spat. Ftd., 7-3/4" ICS Dragon/Lotus Bowl - Unusual Shape
- _____ 184. **B - Fenton 7-1/2" Ruffled Pine Cone Bowl - Extra Nice**
- _____ 185. Pastel Clam - Imp. Ftd., 7-3/4" Round, Flared, Lustre Rosebowl - Outstanding Irid.
- _____ 186. **G - Fenton 4-1/2" Ruffled Holly Compote - Hard to Find**
- _____ 187. M - 9" Fenton Ruffled Holly Bowl
- _____ 188. **M - Fenton 6-1/2" Ruffled Ball Ftd. Lotus/Grape Bowl**
- _____ 189. M - Fenton 8" ICS, Leaf Chain Bowl - Scarce Shape
- _____ 190. **M - Fenton 8" ICS, Orange Tree Bowl**
- _____ 191. M - 10" Imp. Acanthus Plate
- _____ 192. **A - Dugan 6-3/4" Fish Scale/Beads Bowl**
- _____ 193. P - N 9-3/4" Ruffled Wishbone Bowl - Plain Ext. - Collar Base
- _____ 194. **M - 8-1/2", 6 Ruffle Pony Bowl - Neat Pattern**
- _____ 195. BA - 24" Beaded Necklace - Single Strand
- _____ 196. **BA - 17" Beaded Necklace - Double Strand**
- _____ 197. BA - 48" Beaded Necklace - Single Strand
- _____ 198. **BA - 17" Beaded Necklace - Double Strand**

- _____ 199. Crystal - 16" Beaded Necklace - Single Strand
- _____ 200. **RARE P - Dugan 11" Garden Path Vt. Chop Plate - Soda Gold Exterior - Big Beauty**
- _____ 201. M - Dugan 9-3/4", 6 Ruffle Cosmos Vt. Bowl - Very Pretty
- _____ 202. **Pumpkin M - 8-3/4", 10" Ruffle Windflower Bowl - Extra Nice - Super Example**
- _____ 203. M - Dugan 9" Low Ruffle Round Up Bowl
- _____ 204. **Scarce A - Fenton 9", 3 Fruits Plate - No Wear on Fruit**
- _____ 205. G - Fenton 7" Vintage Grape Plate - Slightly Turned Up
- _____ 206. **A - Fenton 8-1/2", 3 in 1 Edge, Ragged Robin Bowl - Seldom Seen - Exceptional**
- _____ 207. M - 7" Ruffled Collar Base Horse Medallion Bowl
- _____ 208. **Deep B - Fenton, ftd. Horse Medallion Nut Bowl**
- _____ 209. G - Fenton Peacock/Urn Ruffled Compote - Difficult to Find
- _____ 210. **M - N 8-3/4", 3 in 1 Crimped Blossoms/Palms Bowl - Smooth Int.**
- _____ 211. Great G - Fenton Orange Tree Loving Cup
- _____ 212. **G - N Daisy/Plume, Ftd. Rosebowl - Ribbed Int.**
- _____ 213. G - N Daisy Plume, ftd. Candy Dish

213A. Rare Princess Lamp, Donated - Proceeds to the Club

- _____ 214. **Amber - Interior (or Ruffled) Rib, Stemmed Cuspidor Whimsey**
- _____ 215. M - Buzz Saw/File Water Goblet - 2 known according to Dotys Field Guide
- _____ 216. **Outstanding M - Fenton 9" Persian Medallion Plate - Fantastic Find**
- _____ 217. Pretty B - Fenton 7-1/2", 8 Ruffle Autumn Acorns Bowl
- _____ 218. **Scarce A - Fenton 7" ICS Autumn Acorns Bowl**
- _____ 219. Great G - Fenton 7" ICS Autumn Acorns Bowl
- _____ 220. **A - Dugan Beaded Basketweave 2 Handled Basket**
- _____ 221. M - Dugan 7" Whimsey Daisy Dear JIP Bowl
- _____ 222. **Yellow Vaseline - Interior Rib 4-3/4", 6 Ruffle Hat Shape Whimsey - Glows**
- _____ 223. P - 7-3/4" Imp. Smooth Rays Ruffled Bowl - Radium
- _____ 224. **BA - Basketflower Hatpin - Pretty One**
- _____ 225. Radium Clam - Imp. 8-3/4" ICS Diamond/Lace Bowl
- _____ 226. **RARE Smoke - Imp. 9-1/2", 6 Ruffle Rococco Bowl - First I have seen**
- _____ 227. Brown Amber - Imp. 12", 6 Ruffle Fashion Bowl ? - Punch Bowl Top ? - Has To Be Rare
- _____ 228. **M - Imperial Squatty 4" Parlor Panels Chubby Vase**
- _____ 229. White Stretch - 4-3/4" Imperial Jewels Vase - 4-3/4" Opening - Nifty
- _____ 230. **Elec. P - Imperial Grape Wine Decanter**
- _____ 231. Amber - Imperial 11-1/4" Heavy Grape Chop Plate - Lots of Pinks/Yellows
- _____ 232. **Fantastic Amber - Imp. 9-1/2", 6 Ruffle Hattie Bowl**
- _____ 233. RARE Amber - Imp. Windmill Water Pitcher - Possibly One of a Kind
- _____ 234. **A - Fenton 9" Ruffled Vintage Grape Whimsey, Ftd. from Fernery - Scarce**
- _____ 235. B - Fenton 8" C.R.E. Holly Bowl - Great Shape/Color

- _____ 236. **B - Fenton 8-1/4" C.R.E. Heart/Vine Bowl - Great Shape/Color**
- _____ 237. Aqua - Fenton 6-1/4" Grape/Cable Round Nut Bowl
- _____ 238. **G - Mlbg. 10", 6 Ruffle Primrose Bowl - Satin Beauty**
- _____ 239. M - Mlbg. 9-1/2", 6 Ruffle Primrose Bowl - Radium Beauty
- _____ 240. **MMG - Westmoreland 8-1/2" Ruffle Daisy Wreath Bowl - Outstanding Example**
- _____ 241. Scarce Moonstone - Westmoreland 8-3/4" Ruffled Carolina Dogwood Bowl - Undervalued
- _____ 242. **PO - Dugan 8", ICS, Fanciful Bowl - Top of the Line**
- _____ 243. RARE B - Dugan 7-1/4" Ruffled Fish Scale/Beads Bowl - Monogrammed
- _____ 244. **Lovely A - Dugan 8-1/2" Low Ruffle Fanciful Bowl**
- _____ 245. PO - Dugan 8-1/2" Low Ruffle Fanciful Bowl - Elegant Find
- _____ 246. **PO - Dugan 8-3/4", 10 Ruffle, Crimped, Fanciful Bowl - Top Notch Example**
- _____ 247. White - 9" Dugan Flat Fanciful Plate - Rainbow Irid.
- _____ 248. **White - 8-1/2" Dugan Turned Up Fanciful Plate or ICS Bowl - WOW**
- _____ 249. Scarce B - Dugan 8-1/2" Turned Up Fanciful Plate
- _____ 250. **A - Dugan 8-1/2" Fanciful Plate - Beautiful Silver/Gold Irid**
- _____ 251. Scarce B - Dugan 9" Fanciful Plate - Multi Electric
- _____ 252. **G - Cambridge Inverted Feather Cracker Jar - Undervalued Beauty**
- _____ 253. P - Multi Elec. N 10" ICS Peacock/Urn Master Bowl
- _____ 254. **B - N STIPPLED 10" ICS Peacock/Urn Master Bowl - Pinks/Gold**
- _____ 255. A - N 9" Spat. Ftd., 3 Fruits Medallion and Meander Bowl
- _____ 256. **P - N PCE, Stippled, Strawberry Bowl - Multi Electric**
- _____ 257. Pretty G - N Fruits/Flowers Stemmed Bonbon
- _____ 258. **Dk. M - N 9" Ruffled Strawberry Bowl - BW Exterior**
- _____ 259. G - N PCE Strawberry Bowl - BW Ext. - Very Nice
- _____ 260. **P - N 9", 3 Fruits Plate - BW Ext.**
- _____ 261. Fantastic Pastel M - PCE 3 Fruits Bowl - Plain Exterior, Lots of Pink
- _____ 262. **G - N Spat. Ftd. 9-1/2" Grape/Cable Plate - Meander Exterior - RARE**
- _____ 263. Pumpkin M - N Ftd. Wishbone Ruffled Bowl
- _____ 264. **G - N Ftd. 7-3/4", 8 Ruffle Wishbone Bowl**
- _____ 265. RARE P - N Ruffled STIPPLED Peacocks Bowl - Thin Base - Few Known
- _____ 266. **B - N 9" Ruffled Peacocks Bowl - Multi Electric**
- _____ 267. P - N 9", 8 Ruffle Peacocks Bowl w/Rib Exterior
- _____ 268. **Pumpkin M - N Ruffled Peacocks Bowl w/Rib Exterior**
- _____ 269. P - N 9" Strawberry Plate - BW Exterior - Extra Nice
- _____ 270. **M - N PCE Peacocks Bowl - Rib. Ext.**
- _____ 271. Pumpkin M - N 9-1/4" Grape/Cable Plate w/BW Exterior
- _____ 272. **Pastel M - N Ruffled Greek Key Bowl - Rib Exterior**
- _____ 273. M - European 2 Handled Bowl - Pattern?
- _____ 274. **M - 5-1/2" Petal Rays European Bowl**



- _____ 275. M - Stork in Rushes 4-1/2" Berry Bowl
- _____ 276. **Beautiful G - N Grape/Cable Mid Size Punch Bowl w/Base - Difficult to Come By**
- _____ 277. G - N Stippled Grape/Cable Punch Cups - 4x\$
- _____ 278. **G - N Stippled Grape/Cable Punch Cup - Emerald Highlights**
- _____ 279. P - N Grape/Cable Mid Size Punch Bowl w/Base - Scarce Beautiful Example - WOW!
- _____ 280. **Pumpkin M - N Grape/Cable Bonbon**
- _____ 281. Scarce B - N Singing Birds Mug - Electric
- _____ 282. **P - N Singing Birds Mug - Electric**
- _____ 283. M - N Singing Birds Mug - Dark Rich Irid.
- _____ 284. **BA - Dugan Dome Base 8", 10 Ruffle, Dogwood Sprays Deep Bowl - Multi Electric**
- _____ 285. G - Fenton 9-1/4, 8 Ruffle Plaid Bowl - Scarce Color
- _____ 286. **Red - Fenton 8" Ruffle, Yellow Amber, Spat. Ftd. Peacock/Grape Bowl - Very Scarce Beauty**
- _____ 287. Red - Fenton 5-3/4" OE Basket, 2 Sides Up - Time to Buy Red
- _____ 288. **Brick Red - Fenton 7-3/4", 8 Ruffle, Grape/Cable Bowl**
- _____ 289. Rosey A - Fenton Spat. Ftd. 7-1/2", ICS, Grape/Cable Bowl - Exceptional
- _____ 290. **Pretty B - Fenton 9" Lotus/Grape Bowl - Pretty Pattern**
- _____ 291. M - Fenton 9" Sq., 8 Ruffle Chrysanthemum/Windmill Bowl
- _____ 292. **B - Fenton 8-3/4", 3 in 1 Edge Autumn Acorn Bowl - Neat Shape**
- _____ 293. Scarce A - Fenton 9-1/4", Low, 3 in 1 Edge Ribbon Tie Plate/Bowl?
- _____ 294. **Clambroth - Fenton 9-1/2" Orange Tree Plate - Very Undervalued**
- _____ 295. White - Fenton 9-1/2" Orange Tree Plate w/Trunk - Loaded w/Blues - Super
- _____ 296. **Clambroth - Fenton 9-3/8" Leaf Chain Plate - Also Undervalued**
- _____ 297. Beautiful White - Fenton 9-1/4" Leaf Chain Plate
- _____ 298. **B - Fenton 9-1/4" Leaf Chain Plate - Scarce Electric Highlights**
- _____ 299. Fantastic W - Fenton 9-1/2" Peacock/Urn Plate - Multi Pastel Beauty
- _____ 300. **Ultra Rare Celeste B - Fenton 8-1/2", ICS, Vintage Grape Bowl - Few Known (2 or 3)**
- _____ 301. Pastel Clambroth - Imp. Floral/Optic 6" Rose Bowl - Loaded w/Irid.
- _____ 302. **Lav. - Imp. Pansy Sugar Bowl**
- _____ 303. P - Imp. Grape 4-3/4" Round Bowl - Little Elec. Beauty
- _____ 304. **P - Imp. 4-3/4" Round Windmill Bowl - Ditto**
- _____ 305. Elec. P. - Imp. 4-3/4" Round, Heavy Grape Bowl - WOW - Stocking Stuffer
- _____ 306. **Elec. P - Imp. 5" Ruffled Zippered Heart Bowl**
- _____ 307. Radium Elec. P - Imp. 5-1/2", 8 Ruffle Scroll Embossed Bowl - File Ext.
- _____ 308. **Awesome Elec. P - Imp. Large, Scroll Embossed, 8 Ruffle Compote - Eastern Star Ext.**
- _____ 309. Radium M - Imp. Large, Scroll Embossed, 8 Ruffle Compote
- _____ 310. **P - Imp. 7" Round, Deep, Scroll Embossed Bowl - Smooth Ext.**
- _____ 311. Pastel Smoke - Imp. 9" Oval Pansy Flared Pickle Dish
- _____ 312. **Pumpkin M - Piccardo Band of Fruits Butter Dish - Few Known**
- _____ 313. Gorgeous Elec. P - Imp. 8-1/2", 8 Ruffle Star of David Bowl - No Upgrade Here
- _____ 314. **Radium Elec. P - Imp. 9" Ruffled Cobblestone Bowl**
- _____ 315. M - Zipper Loop Kerosene Lamp, 8", Signed IG
- _____ 316. **P - Imp. Flute Water Pitcher - Base Flaw - Scarce Beauty**
- _____ 317. P - Imp. Flute Breakfast Cream/Sugar - Neat Pair
- _____ 318. **P - Imp. Flute Toothpick Holder - Radium Dandy**
- _____ 319. PO - Nautilus Creamer Shape - Signed N Script
- _____ 320. **PO - Nautilus Sugar Bowl Shape w/ Curled Ends**
- _____ 321. PO - Nautilus Sugar Bowl Shape w/Open Ends - Script Signed
- _____ 322. **White Opal - Nautilus Sugar Bowl Shape w/Open Ends - Signed - No Irid.**
- _____ 323. P - Nautilus Creamer Shaped Bowl
- _____ 324. **P - Nautilus - Sugar Shape w/Open Ends - Script Signed**
- _____ 325. P - Nautilus - 5-1/2" Tall Whimsied Vase Shape - Script Signed - Beauty
- _____ 326. **RARE M - Australian, 10", ICS, Large Emu Compote - Few Known**
- _____ 327. Magnificent M - N Poppy Pickle Dish
- _____ 328. **Great G - N 9", 3 Fruits Plate - Smooth Exterior**
- _____ 329. P - N 8-3/4" Ruffled 3 Fruits Bowl - Smooth Ext. - Fantastic Irid.
- _____ 330. **Fantastic M - N Strawberry 9" Ruffled Bowl - Plain Ext.**
- _____ 331. Pastel M - N Spat. Ftd. Stippled 3 Fruits Medallion Bowl - Awesome
- _____ 332. **Pastel Aqua Opal - N Spat. Ftd. Stippled 3 Fruits Medallion Bowl - Awesome**
- _____ 333. Dark Ice B - N Ruffled Rose Show Bowl - Really Pretty
- _____ 333A. Truly Aqua - Fenton 5-3/4" Ruffled, O.E. Basket - Rare Find
- _____ 334. **Very RARE G - N Round Bushel Basket w/Smooth Handles - Few Known**
- _____ 334A. **Ice B - N Round Bushel Basket - Extremely Difficult to Find**
- _____ 335. G - N Round Bushel Basket - Scarce
- _____ 336. **Ice G - N Round Bushel Basket - Darker than Most**
- _____ 337. Blue - N Round Bushel Basket - Electric Highlights
- _____ 338. **Blue Lav. - N Round Bushel Basket - Unusual Color**
- _____ 339. Lav. - N Round Bushel Basket - Hints of Horehound
- _____ 340. **Ice B - Open N Round Bushel Basket - Pretty Pastel Opal**
- _____ 341. Aqua Opal - N Round Bushel Basket - Pretty Marigold Interior
- _____ 342. **White - N 8 Sided Bushel Basket - Lots of Pinks**
- _____ 343. Ice B - N 8 Sided Bushel Basket - A Beauty
- _____ 344. **B - N 8 Sided Bushel Basket**
- _____ 345. Ice G - N 8 Sided Bushel Basket - Pretty Pastel
- _____ 346. **Scarce G - N 8 Sided Bushel Basket**
- _____ 347. Dk. M - Fenton 4 Ruffle Kittens Bowl
- _____ 348. **Dk. M - Fenton 4" Ruffle Kittens Bowl - Chipped Top Rim**

- _____ 349. Beautiful B - Fenton 4 Ruffle Kittens Bowl - Great Example
- _____ **350. B - Fenton 6 Ruffle Kittens Bowl - Scarce**
- _____ 351. RARE Lav. - Fenton 6 Ruffle Kittens Bowl - Super
- _____ **352. Powder B - Fenton 2 Sides Up, Card Tray or Banana Kittens Plate**
- _____ 353. M - Fenton Kittens Cereal Bowl - Beautiful Example
- _____ **354. M - Fenton Kittens Whimsey, or 2-1/2" Tall Vase**
- _____ 355. Scarce G - Fenton 9" Autumn Acorns Plate - Top Notch Example
- _____ **356. Frosty W - N Ruffled Hearts/Flowers Bowl - Blue, Pink Highlights**
- _____ 357. Frosty W - N Beaded Cable Rosebowl - Very Pretty
- _____ **358. Pumpkin M - N 7-3/4" Ruffled Smooth Rays Bowl - Affordable Beauty**
- _____ 359. P - N Fruits/Flowers Stemmed Bonbon - Top Notch Example
- _____ **360. G - N Butterfly Bonbon - Pretty Blue Irid.**
- _____ 361. Beautiful M - N Butterfly Bonbon
- _____ **362. Scarce G - 9-1/2", 4 Flowers Vt. Plate - Lots of Blue Highlights**
- _____ 363. P - N Ruffled Good Luck Bowl - Rib Ext. - A Dandy
- _____ **364. Pastel M - PCE Good Luck Bowl - Rib Ext. - Yellows/Blues**
- _____ 365. B - N PCE Good Luck Bowl - Rib. Ext. - Elec. Highlights
- _____ **366. Beautiful M - N Ruffled Good Luck Bowl - Rib Ext.**
- _____ 367. G - N 9" Stippled Grape/Cable Vt. Plate - Old Rose Distillery Advertising - SCARCE
- _____ **368. G - Imp. Flute Toothpick Holder - Scarce Color**
- _____ 369. P - Dugan Diamond/Sunburst Flared Wines - 2x\$
- _____ **370. A - 6-1/2" ICS 1910 Detroit Elks Bowl - Advertising Hot**

- _____ 373. Rich M - N Grape & Cable Tumblers - 4x\$ - Well Matched
- _____ **374. A - Enameled Iris w/Prism Band Tumblers - 4x\$**
- _____ 375. RARE BLUE - N Oriental Poppy Tumbler
- _____ **376. Pastel M - N Grape/Cable Tumbler**
- _____ 377. Outstanding Elec. B - N Peach Tumbler
- _____ **378. M - N Waterlily/Cattail Tumbler - Hard to Find**
- _____ 379. P - N Grape Arbor Tumbler - Elec. Highlights
- _____ **380. G - N Greek Key Tumbler - Scarce**
- _____ 381. M - Fenton Waterlily/Cattail Tumbler
- _____ **382. Radium M - Imp. #474 Flared Tumbler - Unusual Color**
- _____ 383. Pumpkin M - Imp. Tiger Lily Flared Tumbler - Radium
- _____ **384. Beautiful Smoke - Imp. Soda Gold Flared Tumbler**
- _____ 385. Elec P - Imp. Diamond Lace Tumbler
- _____ **386. A - Imp. Grape Tumbler - Amber Sides - Radium Elec.**
- _____ 387. Frosty W - Fenton Blueberry Tumbler - Rare Color
- _____ **388. Beautiful M - Fenton 10 Mums Tumbler**
- _____ 389. Dk. Rich M - Fenton Lattice/Grape Tumbler
- _____ **390. Blue - Fenton Lattice/Grape Tumbler**
- _____ 391. P - Fenton Butterfly/Berry Tumbler - Scarce Beauty
- _____ **392. B - Enameled Cherries/Little Flower Tumbler - Signed with N**
- _____ 393. Rare A - Enameled Cherries Vt. Tumbler - Slanted Sides
- _____ **394. B - Enameled, Ground Cherries Tumbler - Outstanding Example**
- _____ 395. Scarce M - Enameled Silver Queen Tumbler
- _____ **396. M - Enameled Lotus Tumbler - Rib Interior**
- _____ 397. M - Enameled Freesia Tumbler - Rib Interior
- _____ **398. Lav. Base - Dugan-Lattice/Daisy Tumbler - Rare Color**
- _____ 399. RARE G - Fenton Floral/Grape Vt. Tumbler
- _____ **400. M - Fenton Butterfly/Berry Tumbler**

GREAT TUMBLER COLLECTION TO FOLLOW:

- _____ 371. B - Fenton Orange Tree Scroll Tumbler - Scarce and Nice
- _____ 372. M - File Tumbler - Nice and Dark

CLIP ★ ★ AND ★ ★ SAVE

**JOIN AIR CAPITAL CARNIVAL CLUB
ONLY \$15.00 PER YEAR**

If you are interested in becoming a member, please fill out the form below and mail your payment to:

**Randy Thach
4500 N. Ridge Road
Wichita, Kansas 67205**

NAME _____

ADDRESS _____

TELEPHONE _____

E-MAIL ADDRESS _____

_____ Check if new member.
Enclosed is my check for \$15.00

SPECIAL NOTE:

NO SUNDAY CALLS, PLEASE!

Winning Absentee Bidders will be contacted Monday through Wednesday of the week following the Auction!

Thank You!

👉 AUCTION CALENDAR OF EVENTS

January 7, 2006

15TH ANNUAL NEW YEAR'S EXTRAVAGANZA

BOOKING NOW FOR 2006

NEED QUALITY CARNIVAL GLASS & ANTIQUES

*"We don't want all the Business,
Just Yours."*

WE DO AUCTIONS RIGHT!!

www.AWK-SHN.com

MICKEY REICHEL
ANTIQUÉ & AUCTION, L.C.
18350 HUNTERS RIDGE CT.
BOONVILLE, MO 65233

PRESORTED
FIRST CLASS MAIL
US POSTAGE PAID
SEDALIA, MO
PERMIT 217

FIRST CLASS MAIL

SPECIAL INVITATION TO:

RETURN SERVICE REQUESTED



313A

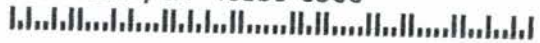
Sold For Club Donation

7*37*****MIXED AADC 650

LEE MARKLEY

PO BOX 306

MENTONE, IN 46539-0306



362



293



298



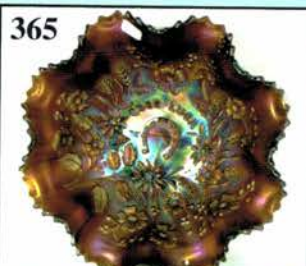
367



143



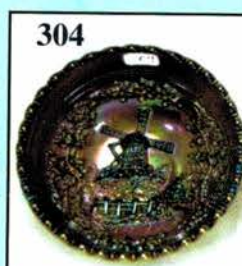
146



365



329



304

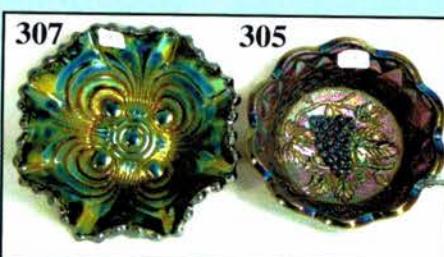


303



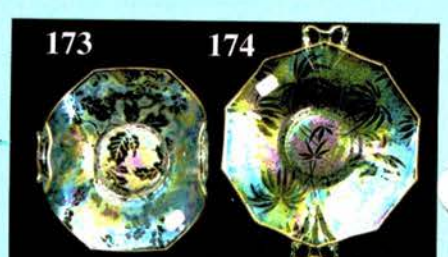
171

172



307

305



173

174