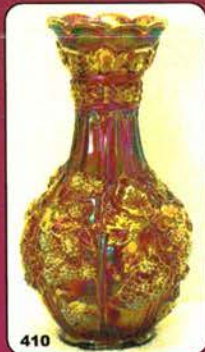
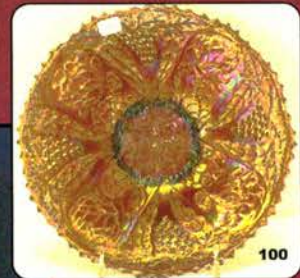
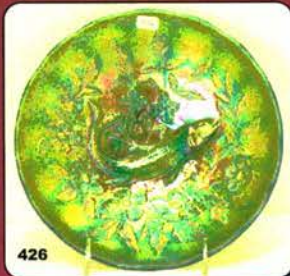


Carnival Glass

AUCTION

Saturday, October 8th, 2005 -- 9:30 A.M.



*All Seasons Building, North Iowa Fairgrounds
Just off I-35 (Exit 194) Go East 5 Miles on Hwy 122 or
Off US Hwy 18 (Avenue of the Saints), take Eisenhower Ave. North
Mason City, Iowa*



Seeck Auctions

P.O. Box 377
Mason City, Iowa 50402



JIM & JAN SEECK

641-424-1116



Carnival Glass Auction

SATURDAY, October 8th, 2005 — 9:30 A.M.



North Iowa Fairgrounds - Mason City, Iowa

(Preview: Friday, Oct 7th - 3 to 6 pm)

NO BUYER'S PREMIUM ** ABSOLUTE AUCTION

Don't forget to check out our website for lots of pictures!

www.seeckauction.com

Also, please email us and we will put you on our email mailing list for auction notices.

Terms: Cash or Check, VISA and MasterCard accepted w/proper ID. **3% Clerking Fee** on all purchases except for payment of cash or check. Announcements made day of sale take precedence over any printed information.

Lunch will be available.

Local Motels: Comfort Inn - 641-423-4444, Holiday Inn - 641-423-1640, Super 8 - 641-423-8855, Country Inn & Suites - 641-423-1770.

ABSENTEE BID POLICY

1. Write-in bids will be accepted by sending the numbers of the item(s) desired and the amount bid on each to:
Seeck Auctions, PO Box 377, Mason City, Iowa 50402.
2. Bids may be called in over the telephone. (This is not live auction bidding) (641) 424-1116.
3. You may **email** your bids to us: **jimjan@seeckauction.com** Continue to include the numbers of the item(s) you would like to bid on and amount bid on each, please include your telephone number.
4. There is a \$5 handling charge for each successful bid. Shipping and insurance charges are additional.
5. Bidders will be notified by phone/email if their bid(s) are successful. This will be done 1 - 3 days after the auction.
6. Please have all bids in by **Thurs., October 6th**. All bids (by mail, phone or **email**) after this date may not be carried out.
7. Please place bids in the following increments: \$1 to \$300 - \$5 increments, \$300 up - \$25 increments.
8. **If you do not receive an item that sold for less than your bid, assume we cancelled your bid because the piece of glass had below average color, manufacture problem, damage or was not listed correctly.**
9. Auction results are posted on our website within 5 days of the auction (depending on drive time home from the sale.)
Also, results are available in many of the club newsletters.

- | | |
|--|--|
| ___ 1. Bird & Grape wall pocket - marigold | ___ 16. Basketweave Open Edge ruffled basket - aqua - scarce color |
| ___ 2. Tree Trunk 6" squatty vase - purple | ___ 17. Basketweave Open Edge ruffled basket - powder blue - has marigold overlay |
| ___ 3. Corinth 10" vase - aqua - scarce color | ___ 18. Basketweave Open Edge ruffled basket - blue |
| ___ 4. Corinth 10" vase - purple | ___ 19. Australian Emu ruffled saucer - purple |
| ___ 5. Two Flowers large size IC shaped bowl - marigold | <u>550</u> 20. Grape & Gothic Arches 7 pc. water set - blue - very scarce, nice |
| ___ 6. Grape Delight ftd rose bowl - purple | ___ 21. Grape & Gothic Arches 5 pc. water set - marigold - scarce |
| ___ 7. Stretch Glass ruffled Dolphin compote - tangerine - scarce | ___ 22. Holly 3 in 1 edge bowl - lime green - nice |
| ___ 8. Stretch Glass Dolphin fan vase - ice green - nice | ___ 23. Holly 3 in 1 edge bowl - blue - silvery |
| ___ 9. Dogwood Spray dome ftd ruffled bowl - peach opal | ___ 24. Beaded Star rose bowl - marigold |
| <u>650</u> 10. N's Peacock at Urn 6" plate or IC bowl - blue - fantastic irid., some will call it a plate, some will call it a bowl | <u>250</u> 25. Orange Tree Orchard 6 pc. water set - blue - super pretty, rare |
| ___ 11. N's Peacock at Urn IC saucer - green - very rare color & super | ___ 26. Heavy Grape 6" deep bowl - lime green - rare color |
| ___ 12. N's Peacock at Urn IC saucer - blue | ___ 27. Stag & Holly large size IC shaped bowl - blue - scarce |
| ___ 13. Heavy Iris tankard water pitcher - marigold - scarce | ___ 28. Stag & Holly large size IC shaped bowls(2) - marigold - choice |
| ___ 14. Rococo vase - marigold - nice | ___ 29. M'burg Grape Wreath 7" 3 in 1 edge bowl - green - radium & nice |
| ___ 15. M'burg Peacock at Urn ruffled mystery bowl - green - satin & super, scarce | |

- 800 30. Fisherman's Mug - peach opal - very rare mug, nice
 ___ 31. Fisherman's mug - purple - nice
 ___ 32. Heavy Grape chop plate - amber - scarce color
 ___ 33. Heavy Grape chop plate - marigold
 ___ 34. Fenton 916 17" vase - marigold
- 625 35. Town Pump - purple - super scarce, nice
 ___ 36. Star of David & Bows dome ftd ruffled bowl - amethyst
 ___ 37. Star of David & Bows dome ftd ruffled bowl - green
 ___ 38. Peacock & Grape ruffled bowl - lime green - very nice
 ___ 39. Peacock & Grape ruffled bowl - amethyst
 ___ 40. Buzz Saw large size cruet - green - very hard to find, nice
 ___ 41. Buzz Saw large size cruet - marigold - also scarce & nice, clear stopper
 ___ 42. Buzz Saw large size cruet - green - no stopper
 ___ 43. Iris buttermilk goblet - marigold
 ___ 44. Diamond & Daisy Cut 8 pc. water set - marigold - scarce
 ___ 45. M'burg Peacock ruffled sauce - amethyst - radium & super, very scarce
 ___ 46. Heavy Grape 8" plate - purple - nice
 ___ 47. Heavy Grape 8" plate - green
 ___ 48. Autumn Acorn ruffled bowl - marigold
 ___ 49. Cherry Circles bon bon - blue
- 1100 50. Tree Trunk Elephant's foot 13" funeral vase - purple - extremely rare vase, highly desirable
 ___ 51. N's Grape Leaves ruffled bowl - horehound - rare color
 ___ 52. N's Grape Leaves ruffled bowl - green
 ___ 53. Pansy ruffled bowl - marigold
 ___ 54. Hatpins including Triad, Moire Beetle & non iridized Top of the Morning - choice
- 460 55. Luster Rose 5 pc. water set - purple - very scarce & highly desirable set
 ___ 56. Large oval bowl - marigold - foreign, not sure of the name?
 ___ 57. Beaded Cable rose bowl - aqua opal - nice
 ___ 58. Beaded Cable rose bowl - purple
 ___ 59. Beaded Cable rose bowl w/Rayed interior - purple
 ___ 60. Imperial Grape water pitcher - purple - scarce
 ___ 61. Imperial Grape water pitcher - marigold
 ___ 62. Imperial Grape tumblers (2) - marigold - choice
- 500 63. Diamond & Rib 20" funeral vase w/plunger base - marigold - extremely rare, crack across base
 ___ 64. Luster Rose butter dish - marigold
 ___ 65. Hearts & Flowers ruffled bowl w/ribbed back - purple - scarce, nice
 ___ 66. Hearts & Flowers ruffled bowl w/ribbed back - ice blue - light on irid.
 ___ 67. Basketweave Open Edge JIP hat shape - red - scarce
 ___ 68. Basketweave Open Edge JIP hat shape - green
 ___ 69. Optic & Button cup & saucers (2) - marigold - choice
- 550 70. Fern Brand Chocolates adv. card tray shaped dish - amethyst - very scarce & nice
 ___ 71. Holly ruffled bowl - amber - tough color
 ___ 72. Holly ruffled bowl - odd green
 ___ 73. Holly ruffled bowl - amber - lacks irid.
 ___ 74. Holly ruffled bowl - powder blue w/marigold overlay - pretty
- 550 75. Peacock at the Fountain fruit bowl - blue - highly desirable, nice
 ___ 76. Peacock at the Fountain fruit bowl - marigold - light color
 ___ 77. M'burg Hanging Cherries 7" IC shaped bowl - marigold - satin
 ___ 78. Acanthus deep round bowl - purple - pretty
 ___ 79. Grape & Cable spt ftd 9" plate - marigold
 ___ 80. Grape & Cable 8 pc. small size punch set - purple - a desirable set
 ___ 81. Paneled Dandelion tankard water pitcher - amethyst - crack by handle
 ___ 81. Paneled Dandelion tumblers (3) - amethyst - choice
 ___ 82. Two Flowers large size deep ruffled bowl - blue
 ___ 83. Heart & Vine ruffled bowl - amethyst
 ___ 84. Poppy Show vase - marigold - pretty - has 3" heat check on side of vase that happened at factory
 ___ 85. Persian Medallion 10" 3 in 1 edge bowl - green - scarce color & pretty
 ___ 86. Crab Claw 5 pc. water set - marigold
 ___ 87. Imperial Grape 6" plate - purple - pretty
 ___ 88. Imperial Grape 6" plate - green
 ___ 89. Garland rose bowl - blue
 ___ 90. Stippled Three Fruits ruffled bowl w/ribbed back - white - very pretty example, scarce
 ___ 91. Flowering Dill crimped edge hat shape - blue
 ___ 92. Flowering Dill crimped edge hat shape - marigold
 ___ 93. Western Thistle 7 pc. water set - blue - made by Riihimaki, rare
 ___ 94. Grand Thistle tumblers (6) - blue - choice
 ___ 95. Stag & Holly large size ruffled bowl - blue - minor nick on one point
 ___ 96. Diamond Ring ruffled bowl - smoke
 ___ 97. Scroll Embossed deep round bowl - purple - pretty
 ___ 98. Drapery candy dish - ice blue
 ___ 99. Hobstar Flower ruffled compote - marigold
- 1150 100. Lotus & Grape 9" plate - amethyst - extremely rare plate & nice
 ___ 101. Orange Tree creamer for breakfast set - blue
 ___ 102. Diamond Lace water pitcher - purple - pretty
 ___ 103. Diamond Lace tumblers (2) - purple - choice
 ___ 104. Stork & Rushes w/lattice band 5 pc. berry set - marigold
 ___ 105. Grape & Cable hatpin holder - purple
 ___ 106. Grape & Cable hatpin holder - marigold - nice
 ___ 107. Grape & Cable hatpin holder - purple - heat check in foot
 ___ 108. Scales ruffled bowl - blue opal
 ___ 109. Scales ruffled bowl - marigold on milk glass - pretty
 ___ 110. Good Luck ruffled bowl w/ribbed back - blue - nice

111. Good Luck ruffled bowl w/BW back - purple
112. **Grape Arbor tankard water pitcher - ice blue - extremely rare pitcher, has crack at top of handle**
113. Wishbone ftd ruffled bowl - purple - pretty
114. Acanthus ruffled bowl - smoke
115. **Lucille 7 pc. water set - blue - very scarce, Riihimaki**
116. Peach master berry bowl - white - gold fruit
117. Peach cvd sugar bowl - white
118. Peach spooner - white
119. Twins fruit bowls & bases (2) - marigold - choice
120. Greek Key ruffled bowl w/BW back - purple - pretty
121. Feathered Serpent 7 pc. berry set - marigold
122. **Persian Garden 6" plate - purple - super pretty, very rare**
123. Persian Garden 6" plate - marigold
124. N's Peacock at the Fountain tumbler - ice blue - scarce
125. N's Peacock at the Fountain tumbler - blue - electric
126. Orange Tree round shaped 9 pc. punch set - blue - scarce
127. Rosette ftd ruffled bowl - amethyst
128. Flashing Star 7 pc. water set - marigold - Riimhiaki
129. Pond Lily card tray shaped bon bon - marigold
130. **Leaf & Beads rose bowl - aqua opal - very pretty**
131. Ribbon Tie ruffled bowl - marigold
132. M'burg Cosmos IC shaped sauce - green - radium
133. Stippled Rays round sauce - amethyst
134. Inverted Feather parfait - marigold
135. Blackberry Open Edge square shaped basket - red - scarce & desirable
136. M'burg Primrose ruffled bowl - amethyst - radium
137. **Grape & Cable 7 pc. berry set - green - scarce**
138. Vintage card tray shaped bon bon - amethyst - silvery
139. Captive Rose 3 in 1 edge bowl - amethyst
140. **Double Stemmed Rose dome ftd ruffled bowl - celest blue - nice, scarce**
141. Captive Rose CRE bowl - amethyst
142. Captive Rose CRE bowl - green - nice
143. Vintage fernery - green
144. Grape & Cable spt ftd IC shaped bowl - amethyst
- 400 145. **Fruits & Flowers bon bon - ice blue - very pretty example**
146. Dragon & Lotus ruffled bowl - green
147. Dragon & Lotus ruffled bowl - marigold
148. Dragon & Lotus IC shaped bowl - blue - irid. splotchy
149. Smooth Rays ruffled bowl - marigold on milk glass
- 900 150. **M'burg Hobstar & Feather 9 pc. punch set - marigold - extremely rare & highly desirable, nice**
151. Vintage 7" ruffled bowl - green
152. Windflower hldd nappies (2) - ice green - very rare, unusual to have 2, choice
153. Windflower hldd nappy - marigold
- 450 154. **Dragon & Lotus 3 in 1 edge bowl - peach opal - an absolute beauty, scarce**
155. Dragon & Lotus 3 in 1 edge bowl - green
156. Hearts & Flowers ruffled compote - light ice blue - scarce
157. Hearts & Flowers ruffled compote - marigold - very flat
158. Waterlily ftd ruffled sauce - blue - silvery
159. Waterlily ftd ruffled sauce - marigold
160. M'burg Nesting Swan ruffled bowl - amethyst - satin
161. M'burg Nesting Swan ruffled bowl - marigold - satin
162. **Zipper Stitch cordial set, includes bottle, 6 wines & tray - marigold**
163. The States oval centerpiece bowl - marigold
164. Holly 3 in 1 edge bowl - blue - extremely flat
165. **Stippled Grape & Cable 9" plate w/BW back - green - super pretty & scarce**
166. Morning Glory 10 1/2" JIP vase - marigold
167. Stippled Three Fruits 9" plate w/ribbed back - blue - a bit silvery & a bit banana boat shaped
168. Peacock & Grape spt ftd ruffled bowl - blue
169. Ripple 8" vase, has 2 1/2" base - purple
- 500 170. **Poinsettia & Lattice ftd ruffled bowl w/ribbed back - purple - pretty**
171. Blackberry Spray Variant square shaped hat shape - aqua - has 2 sets of blackberries
172. N's Eight Sided bushel basket - blue - has epoxy on edge
173. **M'burg Seacoast pin tray - amethyst - radium & pretty, chip on edge**
174. Thistle ruffled bowl - w/Horlacker adv. on base - amethyst
- 1160 175. **Peter Rabbit ruffled bowl - green - extremely rare bowl, highly desirable**
176. Leaf Chain 7" plate - marigold
177. Holly crimped edge hat shape - red - scarce
178. Autumn Acorn CRE bowl - green - pretty
179. Basketweave Open Edge 2 sides up basket - odd smokey lavender
180. **Grape & Cable 7 pc. water set - purple - very pretty set, nick on top edge**
181. Persian Medallion hair receiver - marigold
182. **Brocaded Acorn 6" bulbous vase - lavender - pretty**
183. Fenton's Flowers rose bowl w/smooth top - blue - minor chip on toe
184. Four Pillars 10" vase - aqua opal - pretty, chip on top edge
- 450 185. **Orange Tree w/trunk 9" plate - blue - super pretty**
186. Iris ruffled compote - amethyst
187. Star of David ruffled bowl - purple - super
188. Peacock & Grape spt ftd IC shaped bowl - marigold
189. Petal & Fan ruffled sauce - peach opal
190. **Little Flowers chop plate - marigold - very scarce, highly desirable**
191. Strawberry ruffled bowl w/BW back - purple
192. Nautilus whimsey creamer - purple - nice
193. Lattice & Points ruffled bowl - amethyst - chip on base
194. Pastel Swan salt - marigold

- ___ 195. Pastel Swan salt - celest blue
 ___ 196. Lions ruffled bowl - marigold
 ___ **197. Peacock & Grape 9" plate - marigold - scarce, nice**
 ___ 198. Dugan Cherries 6" crimped edge plate - amethyst
 ___ 199. Leaf Chain 7" IC shaped bowl - aqua - irid. on back only
800 ___ **200. M'burg Courthouse ruffled bowl - amethyst - radium & super**
 ___ 201. Vintage 3 in 1 edge ftd whimsey bowl, made from fernery - amethyst - pretty
 ___ 202. M'burg Whirling Leaves ruffled bowl - green - satin
 ___ 203. Peacock & Dahlia 7" IC shaped bowl - lime green w/marigold overlay
 ___ 204. Sunflower spt ftd ruffled bowl - purple
 ___ **205. Morning Glory 16" funeral vase - purple - scarce**
 ___ 206. Little Flowers ruffled sauce - amethyst
 ___ 207. Grape & Cable powder jar - green - nice
 ___ **208. Octagon butter dish - purple - very hard to find**
 ___ 209. Diamond & Cut Shield 7 pc. water set - marigold - Brockwitz
400 ___ **210. Peacocks ruffled bowl w/ribbed back - blue - pretty**
 ___ 211. Wreath of Roses rose bowl - marigold
 ___ 212. Horse Medallion 7" plate - marigold - scarce
 ___ 213. Beaded Acanthus milk pitcher - marigold
 ___ 214. Plain IC shaped bowl - blue
 ___ 215. Stag & Holly large size deep ftd ruffled bowl - blue
 ___ 216. Dragon & Lotus IC shaped bowl - blue
 ___ 217. Three Fruits 9" plate w/BW back - purple - nice
 ___ 218. Grape & Cable 6" handgrip plate - purple - pretty
 ___ **219. N's Bushel Basket - green - scarce color**
 ___ 220. N's Bushel Basket - blue - nice
 ___ 221. Band of Stars 7 pc. wine set - marigold
 ___ 222. Curved Star cvd bowl - marigold
 ___ 223. Inverted Strawberry powder jar - green
 ___ 224. Miniature Morning Glory 7 1/2" vase - smoke
 ___ 225. Miniature Morning Glory 8 1/2" vase - marigold
 ___ 226. Miniature Morning Glory 7" vase - marigold
 ___ 227. Good Luck PCE bowl w/ribbed back - blue - pretty
 ___ 228. Persian Medallion bon bon - blue
 ___ 229. Fishnet epergne - peach opal - nice
 ___ 230. Cherry Circles square shaped bon bon - blue - scarce
 ___ 231. Fenton's Fine Rib 10" vase - red - very nice
 ___ 232. Three Fruits spt ftd ruffled bowl - purple
 ___ 233. Fine Cut & Roses candy dish - aqua opal - polished feet
 ___ 234. Stippled Petals dome ftd round bowl w/enameled decoration - peach opal
600 ___ **235. Kittens 2 sides up dish - blue - could be the prettiest blue Kittens piece I've seen**
 ___ 236. Hattie deep round bowl - smoke
 ___ 237. Vintage fernery - green
 ___ 238. Wishbone ftd ruffled bowl - purple
 ___ 239. Pinecone 7" ruffled bowl - blue
 ___ **240. Rising Sun 7 pc. water set in original presentation box - marigold - great piece**
 ___ 241. Rising Sun ftd 6 pc. water set - marigold
 ___ 242. Vintage tri-cornered sauce - amethyst
 ___ **243. Stippled Grape & Cable Variant 9" plate w/ribbed back - marigold - very rare plate**
 ___ 244. M'burg Hanging Cherries 7" IC shaped bowl - marigold - satin
 ___ **245. N's Corn vase - lime green - very scarce color**
 ___ 246. Leaf & Beads tri-cornered nut dish - green
 ___ 247. Scales & Greek Key dome ftd ruffled bowl - green - radium
 ___ 248. Enameled Cherries & Little Flowers 7 pc. bulbous water set - blue
 ___ 249. M'burg Frosted Hobstar & Feather tri-cornered dish - crystal - not carnival
 ___ 250. Dugan Cherries 9" ruffled bowl - purple - super pretty
 ___ 251. M'burg Little Stars 7" ruffled bowl - amethyst - satin
 ___ 252. Holly crimped edge square shaped hat shape - blue
 ___ **253. Tiger Lily water pitcher - blue - foreign version**
 ___ 254. Tiger Lily tumblers (3) - blue - matches pitcher, choice
 ___ 255. Stag & Holly lg size ftd ruffled bowl - blue - pretty
 ___ 256. Orange Tree IC shaped bowl - blue
 ___ 257. Scroll Embossed deep round bowl - purple - pretty
 ___ 258. Orange Tree powder jar - blue
 ___ 259. Hatpins including Six Plums, Big Butterfly, Throw Pillow, Veiling - choice
 ___ **260. Fanciful 9" plate - purple**
 ___ 261. Birds & Cherries card tray shaped bon bon - green
 ___ 262. Pony ruffled bowl - purple - nice, some might call this lavender
 ___ 263. Chrysanthemum large size ftd deep ruffled bowl - marigold
 ___ **264. Cobblestone ruffled bowl - purple - super**
 ___ 265. Beaded Bullseye 10" vase - marigold
 ___ 266. Inverted Feather cracker jar - green - nice
 ___ 267. Octagon wine bottle - marigold
 ___ 268. Blackberry Spray JIP CRE hat shape - red - scarce
 ___ 269. Leaf Rays ruffled nappy - purple
 ___ 270. Grape & Cable 9" plate w/BW back - purple - super
 ___ 271. Orange Tree standard size mug - light amethyst - pretty
 ___ 272. Blackberry Open Edge square shaped basket - red - scarce
 ___ 273. Robin 6 pc. water set - marigold
 ___ 274. Star 15" chop plate - marigold - foreign
 ___ 275. Four Flowers ruffled bowl - olive green - pretty
 ___ 276. Orange Tree whimsey ruffled sherbet - marigold - scarce
 ___ 277. Fenton's Grape & Cable w/Persian Medallion interior fruit bowl - marigold
 ___ 278. Fenton's Three Fruits 12 sided plate - amethyst
 ___ 279. Target 12" vase - marigold
 ___ **280. Peacocks 9" plate w/ribbed back - ice green - very nice, scarce**
 ___ 281. Persian Garden IC sauce - white
 ___ 282. Floral & Grape water pitcher - blue - nice
 ___ 283. Vintage 9" ruffled bowl - green

- ___ 284. Rustic 16" mid-size vase - marigold
 ___ 285. Fruits & Flowers ruffled saucers (2) - purple - choice
 ___ 286. Large ftd oval compote - marigold - foreign
 ___ 287. Tartan cvd bowl - marigold - Brockowitz
 ___ 288. M'burg Nesting Swan ruffled bowl - amethyst - satin
 ___ 289. Tree Trunk 10" vase - green
 ___ 290. Open Rose 9" plate - amber - nice
 ___ 291. Windmill 7 pc. water set - marigold
 ___ 292. Sailboats ruffled sauce - lime green - marigold overlay
 ___ 293. Sailboats ruffled sauce - powder blue - silvery
 ___ 294. Sailboats ruffled sauce - marigold
 ___ 295. Fenton's Peacock at Urn ruffled bowl - blue - pretty
 ___ 296. Acorn Burrs punch cups (5) - green - choice
 ___ 297. Mary Ann vase - amethyst - 2 small nicks on base
 ___ 298. Horse Medallion rose bowl - blue - nick on point
 ___ 299. Australian Lattice 7" ruffled bowl - purple
 ___ **300. Eat Paradise Sodas 6" advertising plate - amethyst - nice**
 ___ 301. Unusual Diamond Patterned large foreign bowl - amethyst
 ___ **302. N's Peacock at Urn master IC bowl - marigold - pretty**
 ___ 303. Pulled Loop 11 1/2" vase - blue
 ___ 304. Tiger Lily water pitcher - marigold - foreign
 ___ 305. Tiger Lily tumblers (2) - marigold - match pitcher, choice
 ___ **306. Embroidered Mums ruffled bowl w/ribbed back - purple - silvery**
 ___ 307. Jolly Bear tri-cornered crimped edge plate - white opal, Tree Trunk 10" vase - white opal, Diamond Point & Ovals 10" vase - white opal, Plume 11" vase - blue opal, all non carnival - choice
 ___ 308. Grapevine Lattice 7" ruffled bowl - purple - super
 ___ **309. Raspberry water milk pitcher - marigold - scarce**
 ___ 310. Carolina Dogwood ruffled bowl - marigold on milk glass - light irid.
 ___ 311. Acorn Burrs master berry bowl - purple - pretty
 ___ 312. Four Flowers 6" plate - peach opal - nice
 ___ 313. Orange Tree ruffled bowl - white
 ___ 314. Dugan Cherries banana boat shaped sauce - marigold
 ___ 315. Fine Rib 11" vase - red - dark
 ___ 316. Tumblers including: N's Peacock at the Fountain - blue, Dugan Peacock at the Fountain - blue, Concave Diamond - celest blue, Acorn Burrs - purple, Floral & Grape - blue - choice
 ___ 317. Cherry Chain 6" plate - blue
 ___ 318. Hobstar & Shield 7 pc. water set - marigold
 ___ 319. Rising Sun butter dish - marigold
 ___ **320. Fenton's Peacock at Urn ruffled bowl - blue - shallow chip on one point**
 ___ 321. Lions IC shaped bowl - marigold
 ___ 322. Puzzle round bon bon - peach opal
 ___ 323. Leaf Rays nappy - white
 ___ 324. Leaf Rays nappy - peach opal
450 **325. Covered Frog - marigold - extremely rare piece, these are neat!**
 ___ 326. Fishscale & Beads ruffled bowl - marigold
 ___ 327. Round Up ruffled bowl - blue
 ___ 328. Round Up ruffled bowl - peach opal - chip on back edge
 ___ 329. Pillow & Sunburst ruffled bowl - purple
 ___ 330. Stippled Three Fruits ruffled bowl w/ribbed back - white - scarce
 ___ 331. Rose Spray JIP compote - ice green
 ___ 332. Horse Medallion IC shaped bowl - marigold
 ___ 333. Star 10" large bowl - marigold
 ___ 334. Grand Thistle tumblers (2) - amber - choice
 ___ **335. Drapery rose bowl - aqua opal - nice**
 ___ 336. Imperial Grape ruffled sauce - purple
 ___ **337. Persian Garden large size IC shaped bowl - white - pretty**
 ___ 338. Beaded Shell mug - purple
 ___ **339. N's Thin Rib 12" mid-size vase - green - scarce & nice**
 ___ 340. Windmill milk pitcher - marigold
 ___ 341. Little Fishes ftd master berry bowl - marigold - nice
 ___ 342. Daisy row boat - marigold
 ___ 343. Lattice & Grape 6 pc. tankard water set - marigold - pretty set
 ___ 344. Diamond Ring rose bowl - marigold
 ___ 345. Small Shell soap dish - amethyst
 ___ 346. Birds & Cherries bon bon - green
 ___ 347. Ripple 10" vase - marigold - has 2 7/8" base
 ___ 348. Buzz Saw small water pitcher - marigold
 ___ 349. Buzz Saw tumblers (3) - marigold - choice
475 **350. Tornado small size vase - purple - super, a real beauty**
 ___ **351. 1982 ICGA Frolicking Bears spittoon - red**
 ___ 352. 1998 ICGA Frolicking Bears spittoon - green opal
 ___ 353. 1983 ICGA Frolicking Bears spittoon - vaseline opal
 ___ 354. 1985 ACGA Seacoast spittoon - blue
 ___ 355. 1982 ACGA Seacoast spittoon - peach opal
 ___ 356. 1983 ACGA Seacoast spittoon - green
 ___ 357. 1998 ACGA Seacoast spittoon - opaque green
 ___ 358. 1984 ACGA Seacoast spittoon - red
 ___ 359. Paneled Dandelion tumblers (3) - blue - choice
 ___ **360. Horse Medallion JIP ftd bowl - amber - flattened out**
 ___ 361. Wine & Roses goblet - blue
 ___ 362. Orange Tree goblet - marigold
 ___ 363. Ribbons butter dish - marigold - foreign
 ___ 364. Flute toothpick - purple
 ___ 365. Featherstitch ruffled bowl - blue
 ___ 366. Blackberry Spray Variant square shaped hat - aqua - nice
 ___ 367. Peacock Tail ruffled hat shape - blue
 ___ **368. Little Barrel - marigold - nice**
 ___ 369. N's Thin Rib 10" vase - green
 ___ 370. Orange Tree hatpin holder - blue - minor nick on toe
 ___ 371. Pinecone 7" IC shaped bowl - blue - silvery
 ___ 372. Waterlily large toothpick - marigold

- ___ 373. Singing Birds mug - purple
 ___ 374. Diving Dolphins ruffled bowl - amethyst
 ___ **375. Peacocks PCE bowl w/ribbed back - blue - scarce & desirable**
 ___ 376. Imperial Grape 7" round bowl - marigold
 ___ 377. Grape & Cable variant 9" plate w/BW back - purple - nice
 ___ 378. Grape & Cable tumbler - marigold
 ___ 379. Butter dish - marigold - foreign
 ___ 380. Scroll Embossed 9" plate - green
 ___ 381. Orange Tree mug - marigold
 ___ 382. Fruits & Flowers 7" ruffled bowl - purple
 ___ 383. Blackberry Spray ruffled hat shape - red - minor nick on base
 ___ 384. Fine Cut & Roses rose bowl - ice blue - minor nick on toe
 ___ 385. Scroll Embossed ruffled sauce - marigold
 ___ 386. Star Medallion milk pitcher - marigold
 ___ **387. Soutache dome ftd crimped edge ruffled bowl - peach opal - nice**
 ___ **388. Question Mark ftd plate - marigold - nice**
 ___ 389. Butterflies card tray shaped bon bon - amethyst
 ___ 390. Star & Fan cordial set, 6 cordials, under plate & bottle - marigold
 ___ 391. Snow Fancy 4" berry sauce - marigold
 ___ 392. Holly ruffled bowl - white
 ___ 393. Dugan Peacock at the Fountain tumblers (2) - amethyst - choice
 ___ 394. Tiger Lily tumbler - purple - fantastic
 ___ **395. Daisy & Drapes turned in vase - white - nice**
 ___ 396. Leaf & Beads ftd nut dish - green
 ___ **397. Brooklyn Bridge 10 ruffled bowl - marigold**
 ___ 398. Scroll & Flower Panel vase - smoke - marked IG
 ___ 399. Coin Dot 7" ruffled bowl - lime green - marigold overlay
 ___ 400. Fenton's Grape & Cable ruffled 7" bowl - lime green w/marigold overlay
 ___ 401. Blackberry Spray ruffled hat - blue - irid. on back only
 ___ 402. Pinecone IC shaped sauce - blue
 ___ 403. Open Rose 9" round bowl - amber
 ___ 404. Stippled Rays ruffled sauce - amberina
 ___ 405. Smooth Panels 7" squatty vase - marigold
 ___ 406. Imperial Grape wines - marigold & purple, Octagon wine - marigold - choice
 ___ 407. Panther ftd round sauce - marigold
 ___ 408. Daisy Wreath ruffled bowl - peach opal - pretty
 ___ 409. Imperial Jewels round bowl - amethyst - has Imperial Cross marks
sw ___ **410. Loganberry vase - amber - super pretty, very scarce**
 ___ 411. Floral & Grape JIP hat - marigold
 ___ 412. Feathered Serpent ruffled sauce - amethyst
 ___ 413. Fern crimped edge ruffled hat - marigold
 ___ 414. Vintage base to epergne - blue
 ___ 415. Coin Dot 3 in 1 edge bowl - amethyst
 ___ 416. M'burg Holly Whirl ruffled bowl - marigold - radium & nice
 ___ 417. Grape & Cable hdd nappy made from punch cup - purple
 ___ 418. Stork & Rushes tumbler - blue
 ___ 419. Raspberry tumbler - purple
 ___ 420. Leaf Chain 9" bowl - clambroth
 ___ 421. Ftd Orange Tree tumbler - blue
 ___ 422. Cosmos & Cane 4" berry dish - honey amber
 ___ 423. Acorn ruffled bowl - marigold
 ___ 424. Beauty Bud vase - amethyst
 ___ 425. Fleur De Lis round bowl - marigold - foreign
jyco ___ **426. M'burg Trout & Fly IC shaped bowl - green - satin & super, as pretty as they get!**
 ___ 427. 5 Pcs. of glass - choice
 ___ 428. 14 Pcs. contemporary glass - choice
 ___ 429. Carnival Glass books (4) - all to go
 ___ 430. Carnival Glass pcs. (3) - choice
 ___ 431. Carnival Glass pcs. (20) - choice
 ___ 432. Carnival Glass pcs. (22) - choice

Jim and Jan Seeck **Seeck Auctions** 641-424-1116



350

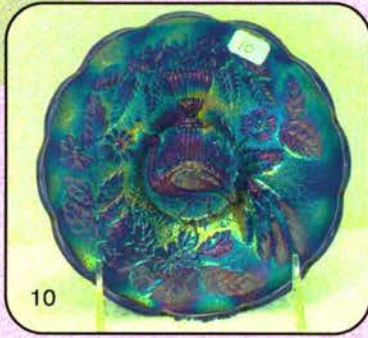
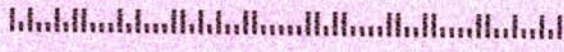
Seeck Auctions

P.O. Box 377
Mason City, Iowa 50402

PRESORTED
FIRST-CLASS MAIL
U.S. POSTAGE PAID
MINNEAPOLIS, MN
PERMIT NO. 28534

*****AUTO**MIXED AADC 553

Lee Markley
PO Box 306
Mentone, IN 46539-0306



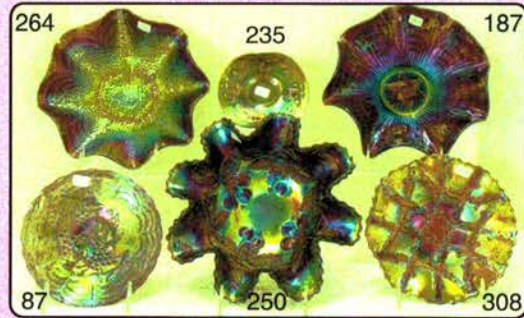
10



75



70



264

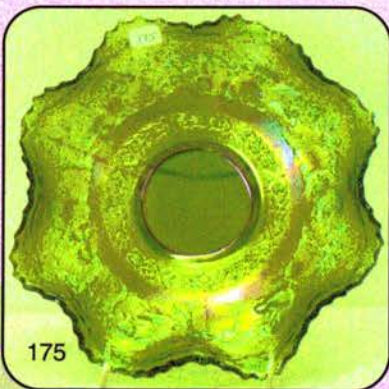
235

187

87

250

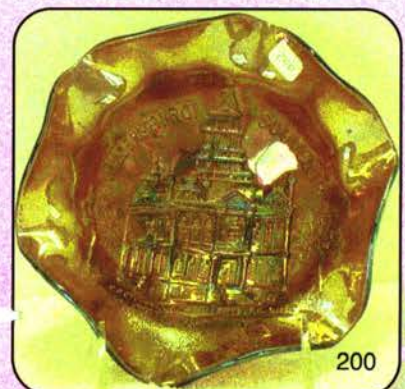
308



175



25



200