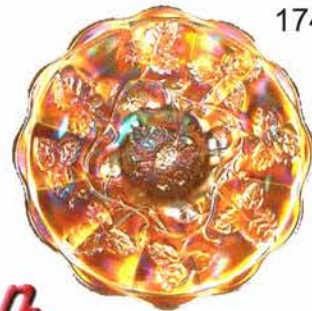




167



236



174

Remmen Auction

is proud to present the

2005

**Pacific Northwest
Carnival Glass Club**

Convention Auction



220



119

Saturday, August 13th, 2005

Auction starts at 9:30 am

Preview on Friday, August 12th from 6:00 to 9:00 pm
and on Saturday, August 13th from 8:00 to 9:30 am



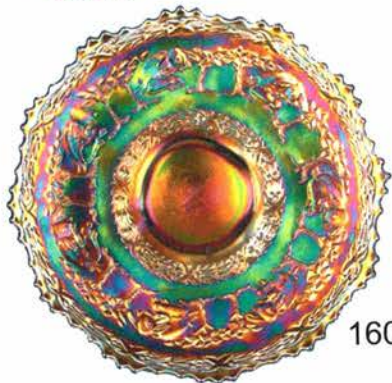
178



179

Embassy Suites Washington Square

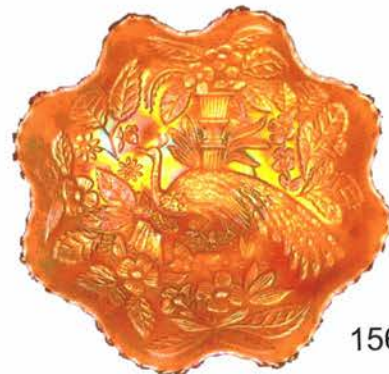
9000 SW Washington Square Road, Tigard, Oregon 97223
Phone: 503-644-4000 • Fax: 503-641-1654



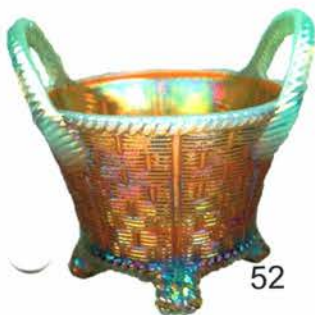
160



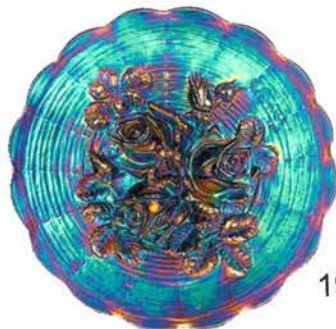
148



156



52



198



221



165



Proudly Presents the

2005 PNWCGC Convention Auction

We would like to invite you to attend the PNWCGC convention and auction. This year's auction is filled with some very fine pieces of glass for your bidding pleasure. Come and join us August 10th through the 13th for great glass, great people and great fun! For Reservations please contact Embassy Suites at 503-644-4000. Rates are 89.00 per night (plus tax) this will include free breakfast and hosted happy hour daily. When making reservations please mention you are with the PNWCGC. Remember to make your reservations ASAP. To ensure this rate please make reservations by July 27th 2005

Absentee Bid Policy

Absentee bids will be gladly accepted by either placing bids through our website or contacting us at our office: (503) 256-1226 or cell phone: (503) 756-2629. The deadline for all absentee bids will be Friday, August 12th 3:00 pm EST. A Credit Card may be required for submitting absentee bids if not known by Auction Company. By submitting an absentee bid you are entering into a contract with Remmen Auction Service and will take full responsibility to honor any and all bids we execute for you. Your absentee bid will be entered just as if you are present at the auction and bidding yourself. Bids will not be executed if damage to any item is found during the auction that has not been described in brochure. A \$7.50 handling charge for each successful absentee bid will be added to the selling price. The auctioneer will notify successful bidders within 1-7 days after the auction. Payment in full, plus postage, insurance, and handling are required within 10 days of notification and before any item is shipped or delivered to buyer. Please allow 3 to 4 weeks for delivery. In the event of a tie bid, bidders in attendance will have precedence over an absentee bid. In the event of a tie bid between absentee bidders, the earliest bid received will have precedence. Remmen Auction offers absentee bidding as a convenience and will not be held responsible for errors or failure to execute bids.

Live Internet Bidding

Live Internet bidding will be available for this auction for those who are unable to attend. For further information on how to use the service please visit our website and click on the Proxibid Icon. A 10% Buyers premium will apply to each successful bid purchased through Proxibid. Buyer's premium will apply to **live Internet bidding only!**

Terms and Conditions of Sale

Cash, Pre-approved Check, Visa, MasterCard and Discover Card are accepted. A 3% Buyer's Premium will apply to all purchases with the exception of Cash or Check. All items must be paid for before they leave the premises. All statements made the day of sale will take precedence over any and all printed material. All items are being sold without guarantee or warranty implied, regardless of statements made by auctioneers or staff. Auction Company is not responsible for any accidents, thefts, breakage, or sold items. Remmen Auction reserves the right to withdraw any property at any time before and during the actual sale. All sales are final once the item leaves the auction location.

Debra Jo Remmen

Auctioneer

Phone: (503) 256-1226

e-mail: debra@remmenauction.com

Kris K. Remmen

Auctioneer/Auction Manager

Phone: (503) 256-6931

e-mail: kris@remmenauction.com

Please visit our website for complete listing and photos of all items to be sold!

www.remmenauction.com

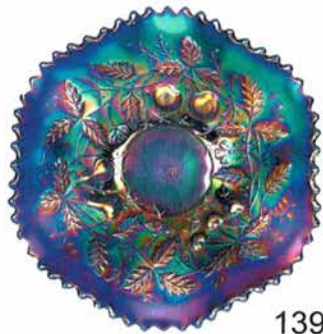


Members of: National Auctioneers Association
Oregon Auctioneers Association
Certified Appraisers Guild of America

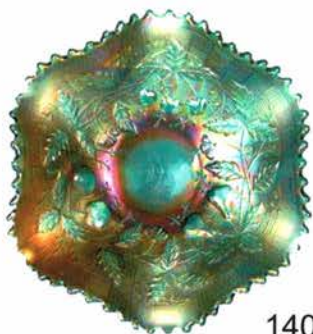
Graduate of Missouri Auction School
Graduate of Mendenhall School of Auctioneering
Licensed Auctioneer in the State of Florida
Licensed Auctioneer in the State of Ohio



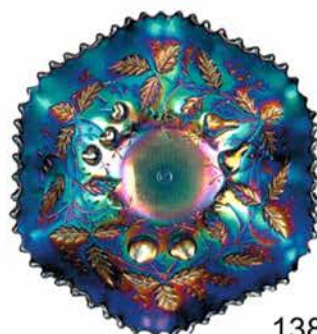
1	Imperial Green Fashion Rose bowl. 15	145	35	Fenton Marigold Butterfly & Berry Four Piece Table Set.
2	Imperial Marigold Fashion Rose Bowl. NS			
3	Imperial Purple Hobstar Compote. Electric Highlights. Has manufacture peeling on rim. 25	100	36	Imperial Marigold Luster Rose Four Piece Table Set.
4	Dugan White Question Marks Compote with Radium Iridescence. 225	25	37	US Glass Cosmos & Cane. Stress crack in handle
5	Dugan Electric Purple Question Marks Compote. 135	110	38 A	Northwood Marigold Peacock at the Fountain Butter Dish.
6	Fenton Blue Holly Bowl with 3/1 Edge. 205		38 B	Northwood Marigold Peacock at the Fountain Spooner.
7	Fenton Green 6 1/4" Pinecone Plate. Very flat. 130	100	39	Cambridge Green Inverted Feather Cracker Jar.
8	Fenton Amber Strawberry Bon-Bon. NS	650	40	Northwood Dark Marigold Hearts & Flowers PCE Bowl. Very Pretty
9	Imperial Marigold Little Barrel. Has chips on ground top. 75	325	41	Northwood Ice Blue Hearts & Flowers Ruffled Bowl with Ribbed Back.
10	Imperial Green Little Barrel. Super color, typical tiny flea bites on ground top. 145	25	42	Northwood Marigold Poppy Pickle Dish.
11	Northwood Pastel Marigold Grape Leaves Ruffled Bowl. 130	NS	43	Northwood Electric Blue Poppy Pickle Dish.
12	Imperial Electric Purple Pansy Pickle Dish. 60	130	44	Singleton Bailey Cranberry Opal Poppy Show Vase.
13	Imperial Clambroth Pansy Pickle Dish. 75	150	45	Singleton Bailey Lavender Poppy Show Vase.
14	Fenton Amethyst Butterfly & Fern Water Pitcher. NS	80	46	Singleton Bailey Ice Blue Poppy Show Vase.
15	Northwood Purple Singing Birds Water Pitcher. 225	100	47	Singleton Bailey Blue Poppy Show Vase.
16	Northwood Pearlized Custard Grape & Gothic Arches 5 piece Water Set. 200	85	48	Singleton Bailey Lime Green Opal Poppy Show Vase.
17	Imperial Electric Purple Diamond Lace Water Set with 5 Tumblers. 875	60	49	Imperial Amber Open Rose 9" Plate.
18	Purple Imperial Grape Large Ruffled Bowl. 225	1200	50	Imperial Electric Purple 9" Open Rose Plate.
19	Marigold Imperial Grape 6" Plate. 25	145	51	Northwood White Octagonal Bushel Basket.
20	Purple Imperial Grape 6" Plate. Nice Electric Highlights. 115	475	52	Northwood Aqua Opal Bushel Basket. Great iridescence on this piece, one of the best!
21	Imperial Teal Scroll Embossed Plate. 75	110	53	Northwood Ice Green Round Bushel Basket.
22	Imperial Pastel Marigold Scroll Embossed Plate. Scarce Color. 70	375	54	Northwood Horehound Bushel Basket. Rare color with beautiful iridescence
23	Imperial Electric Purple Scroll Embossed Plate. Has minor high point friction. 275	55	55	Northwood Marigold Round Bushel Basket.
24	Dugan Peach Opal Many Ribs 6" JIP Vase. 65	165	56	Northwood Lavender Round Bushel Basket.
25	Dugan Peach Opal Pulled Loops Vase. 60	50	57	Northwood Green Grape & Cable Bon-Bon. Really Nice
26	Northwood Amethyst Diamond Points 9" Vase. 55	80	58	Northwood Electric Blue Grape & Cable Bon-Bon.
27	Northwood White Diamond Points 9 1/2" Vase. Frosty. 125	100	59	Northwood Electric Purple Grape & Cable Ruffled Bowl with Plain Exterior.
28	Northwood Electric Blue Diamond Points 7 1/2" Vase. 150	250	60	Northwood Marigold Grape & Cable Stippled Bowl with Ribbed Back. Super iridescence
29	Dugan Peach Opal Round Up Low Ruffled Bowl or Plate. 115	75	61	Northwood Marigold Grape and Cable Butter Dish.
30	Dugan Blue ICS Round Up Bowl. 135	100	62	Northwood Green Grape & Cable Butter Dish.
31	Dugan Marigold Persian Gardens 6" Plate. NS	90	63	Northwood Purple Grape and Cable Butter Dish.
32	Dugan Amethyst Persian Gardens 6" Plate. 275	NS	64	Dugan Electric Purple Cherries 6" Ruffled Bowl.
33	Dugan Peach Opal Nautilus Creamer. 75	NS	65	Dugan Electric Purple Cherries Footed Ruffled Bowl.
34	Dugan Blue Stork & Rushes 7 Piece Water Set. 425	80	66	Fenton White Captive Rose Compote. Frosty & heavily iridized
		35	67	Millersburg Green Mayan Bowl.



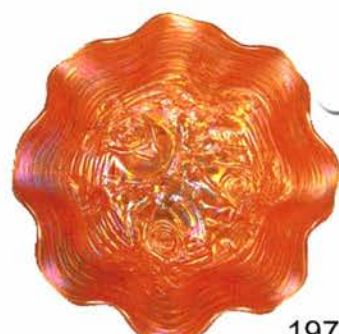
139



140



138



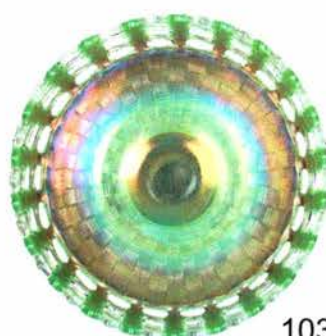
197



128



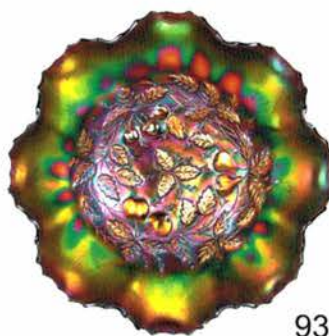
129



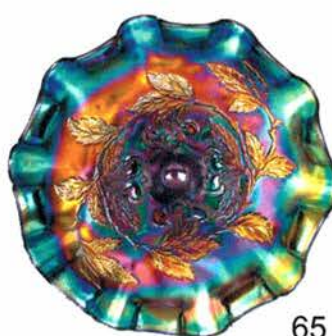
103



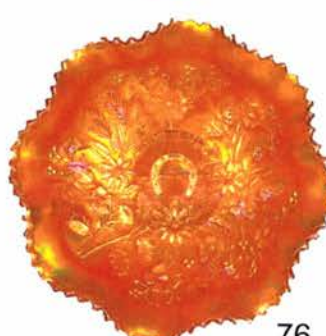
183



93



65



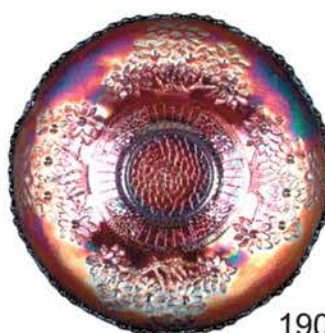
76



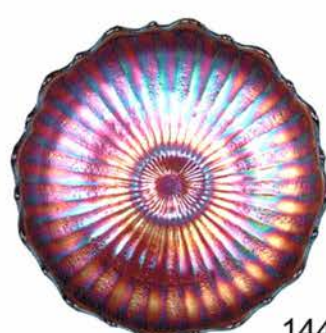
85



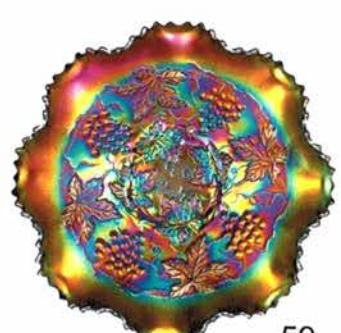
75



190



144



59



234



233



47



48



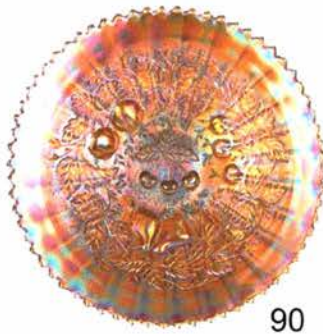
232



235



91



90



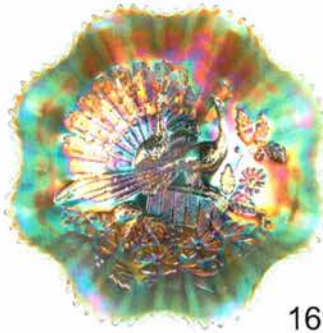
23



166



170



169



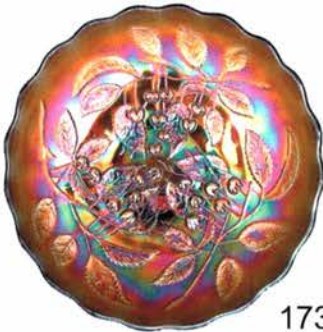
238



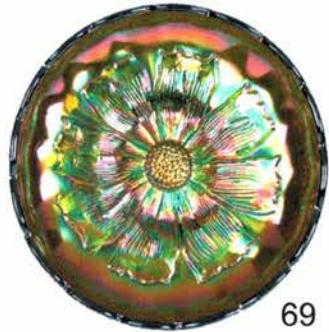
240



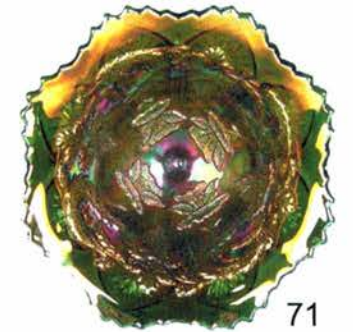
172



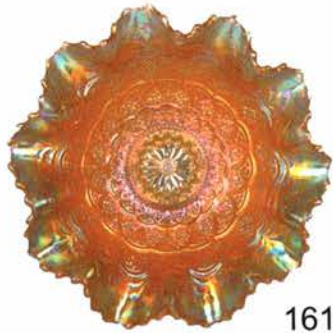
173



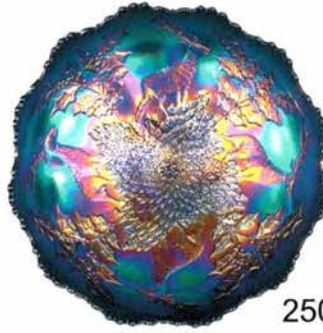
69



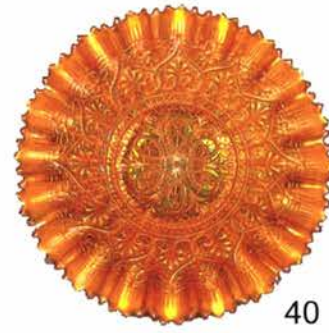
71



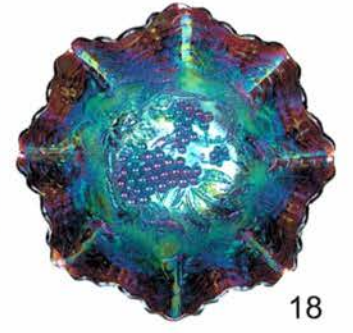
161



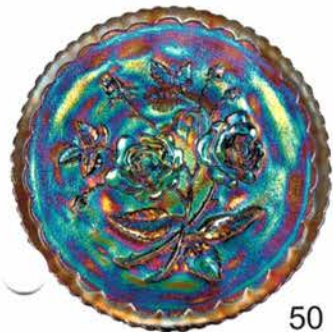
250



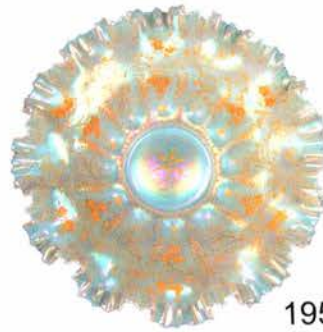
40



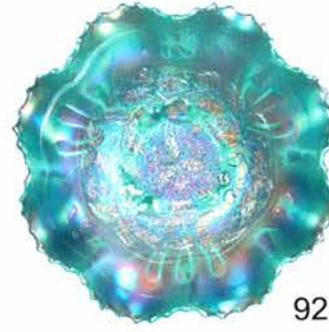
18



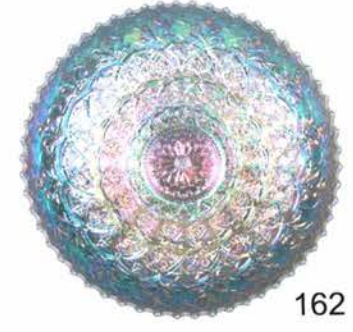
50



195



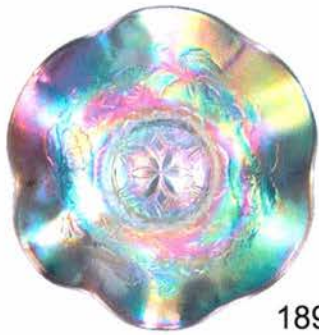
92



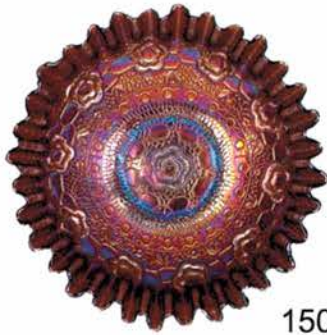
162

160	68	Millersburg Green Radium Nesting Swan Ruffled Bowl.	45	99	Fenton Pumpkin Marigold Dragon & Lotus 3/1 Edge Bowl.
80	69	Millersburg Green Cosmos Sauce. Super radium iridescence	2150	100	Northwood Marigold Peacock at the Fountain Compote.
2900	70	Millersburg Marigold Round Deep Grape Compote.	35	101	Fenton Two Row Open Edge Basket with "Feldman Furniture" Advertising..
400	71	Millersburg Green 7" Poppy Compote with Radium Iridescence.	135	102	Fenton Ice Green Two Row Open Edge 6 1/2" ICS Bowl.
250	72	Millersburg Purple Bulls Eye & Loop 6" Squatty Vase.	350	103	Fenton Ice Green Three Row Open Edge ICS Bowl.
275	73	Northwood Purple Good Luck Bowl with PCE & Ribbed Back.	65	104	Fenton Red Square Open Edge Basket.
275	74	Northwood Blue Stippled Good Luck ruffled bowl with Ribbed Exterior.	400	105	Fenton Red/ Reverse Amberina Blackberry Spray Square Ruffled Hat. Super iridescence
225	75	Northwood Marigold PCE Good Luck Bowl. Dark & Pretty.	75	106	Northwood Green Strawberry Handgrip Plate. Has small scratch on surface
200	76	Northwood Pumpkin Marigold Stippled Good Luck Ruffled Bowl with Ribbed Exterior.	80	107	Northwood Marigold Strawberry 7" Handgrip Plate.
100	77	Northwood Green Good Luck Ruffled Bowl. Heat check in collar base	125	108	Northwood Purple Strawberry Plate with Plain Exterior.
250	78	Northwood Electric Blue Good Luck Ruffled Bowl with Ribbed Back.	875	109	Northwood Green Stippled Strawberry Plate with Basketweave Exterior.
60	79	Fenton Dark Marigold Orange Tree Fruit Bowl.	70	110	Northwood Marigold Strawberry PCE Bowl with Basketweave Exterior..
125	80	Fenton Dark Marigold Orange Tree Plate.	75	111	Northwood Green Good Luck Ruffled Bowl with Basketweave Exterior..
100	81	Fenton White Orange Tree Plate.	60	112	Fenton Pastel Marigold Large Chrysanthemum ICS Footed Bowl. Beautiful pastel iridescence
25	82	Northwood Ice Blue Drapery Candy Dish. Has Internal Bruise.	75	113	Blue Chrysanthemum 10 1/2" Ruffled Footed Bowl.
175	83	Northwood Ice Green Drapery Vase. Good feet	2x2.5	114	Fenton Amethyst Diamond & Rib 9 3/4" Vase.
130	84	Northwood Ice Blue Drapery Vase. Has shallow flake on foot	65	115	Northwood Green Flute Mid-size Vase 10" tall 4 1/4" Base.
270	85	Northwood Purple Leaf Columns 6 1/2" Vase. Super color	75	116	Northwood Green Standard Tree Trunk 10 1/2" Vase.
160	86	Northwood Electric Blue Drapery Variant 9" Vase.	85	117	Northwood Marigold 11" Standard Tree Trunk Vase.
70	87	Northwood White Hearts & Flowers Compote.	N5	118	Northwood Blue 10" Thin Rib Vase. Has electric highlights
135	88	Northwood Dark Marigold Hearts & Flowers Compote. Super radium iridescence	575	119	Eda Blue Kulor 6" Vase.
350	89	Northwood Purple Stippled Three Fruits Plate.	65	120	Imperial Electric Purple Grape 9" Low Ruffled Bowl.
130	90	Northwood Marigold Stippled Three Fruits Plate with Ribbed Exterior.	45	121	Fenton Dark Marigold Ruffled Horse Medallion Bowl.
325	91	Northwood Blue Stippled Three Fruits Plate.	60	122	Fenton Marigold Horsehead Medallion JIP Footed Bowl.
425	92	Northwood Ice Blue Stippled Three Fruits Medallion Ruffled Bowl. Very slight nick on edge of foot	70	123	Fenton Marigold Horse Head Medallion Rose Bowl.
300	93	Northwood Purple Three Fruits Medallion Footed Bowl.	50	124	Northwood Pastel Marigold Leaf & Beads Nut Bowl.
100	94	Fenton Marigold Lions ICS Sauce Bowl.	75	125	Northwood Blue Leaf & Beads Rose Bowl.
45	95	Fenton Blue Dragon & Lotus Ruffled Bowl.	225	126	Northwood Aqua Opal Leaf & Beads Rose Bowl.
40	96	Fenton Dark Marigold Dragon & Lotus Ruffled Bowl.	N5	127	Northwood Purple Basket of Roses Bon-Bon.
75	97	Fenton Dragon & Lotus Vaseline Ruffled Bowl. Light opal on tips	225	128	Northwood Ice Blue PCE Nippon Bowl.
50	98	Fenton Amber Dragon & Lotus Ruffled Bowl.	125	129	Northwood Purple Nippon Bowl with PCE.
			65	130	Imperial Lavender Pansy Ruffled Bowl.
			45	131	Imperial Amber Ruffled Pansy Bowl.

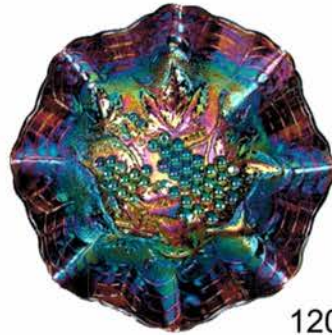
- 132 Imperial Electric Purple Pansy Ruffled Bowl. ⁷⁵
- 33 Imperial Smoke Low Ruffled Pansy Bowl. Almost a plate, very hard to find color! ³⁵
- 134 Northwood Marigold Stippled Fruits & Flowers Bon-Bon. ⁷⁵
- 135 Northwood Aqua Opal Fruits & Flowers Bon Bon. ⁶⁰⁰
Pretty pastel with very little butterscotch
- 136 Northwood Green Fruits & Flowers Bon-Bon. ⁶⁰⁰
- 137 Northwood Blue Fruits & Flowers Bon Bon. ¹⁰⁰
- 138 Northwood Electric Purple Fruits & Flowers 7 1/4" Ruffled Bowl. ⁹⁵
- 139 Northwood Electric Blue Fruits & Flowers 7 1/4" Ruffled Bowl. ¹⁷⁵
- 140 Northwood Sapphire Fruits & Flowers Ruffled Bowl. ³²⁵
- 141 Imperial Electric Purple 8" Hattie ICS Bowl. ⁷⁵
- 142 Imperial Lavender Cobblestone Ruffled Bowl! ¹⁵⁰
- 143 Imperial Marigold Fashion Punch Set Including Four Cups. ¹²⁵
- 144 Fenton Red Stippled Rays ICS Sauce. ²⁰⁰
- 145 Fenton Red Acorn Ruffled Bowl. Nice cherry red with beautiful iridescence ³²⁵
- 146 Millersburg Amethyst Peacock Sauce. Nice radium iridescence ¹⁷⁵
- 147 Millersburg Marigold Vintage Sauce with Hobnail Exterior. Rare and Beautiful ¹⁷⁵
- 148 Millersburg Electric Blue Bernheimer Brothers Many Stars Ruffled Bowl. The Best I've Seen! ⁹⁰⁰⁰
- 149 Millersburg Amethyst Strawberry Wreath Radium 9 7/8" ICS Bowl. Slight mfg peeling on base. ¹⁰⁰
- 150 Incredible Fenton Lavender Captive Rose Bowl with Tight Candy Ribbon Edge. Lots of blue iridescence! ⁷⁰⁰
- 151 Fenton Blue Captive Rose Plate. Silvery
- 152 Fenton Marigold Captive Rose 9" Plate.
- 153 Northwood Green Butterfly Bon-Bon.
- 154 Northwood Purple Midsize Thin Rib Vase.
- 155 Northwood Blue Midsize Thin Rib Vase.
- 156 Fenton Marigold on Moonstone Peacock at Urn Ruffled Bowl.
- 157 Northwood Green Midsize Tree Trunk Vase.
- 158 Aurora pearls Bowl with Enameled Decoration.
- 159 Sherman Hand Celeste Blue Grape & Cable Candle Lamp. Very Limited Edition
- 160 Fenton Blue Peter Rabbit 9" Plate. Super mold strike and very pretty
- 161 Dugan Pastel Marigold Persian Gardens Fruit Bowl . Top Only.
- 162 Dugan White 11" Persian Gardens ICS Bowl.
- 163 Pair of Dugan 6" White Persian Garden Sauces.
- 164 Northwood Marigold Stippled Dandelion Knights Templar Advertising Mug.
- 165 Northwood Aqua Opal Dandelion Mug. Super fantastic, one of the best!
- 166 Northwood Marigold Peacocks PCE Bowl.
- 167 Northwood Electric Blue Peacocks PCE Bowl. Super!
- 168 Northwood Purple Ruffled Peacocks Bowl. Very pretty with electric highlights
- 169 Northwood Aqua Opal Peacocks Ruffled Bowl.
- 170 Northwood Electric Purple Peacocks PCE Bowl.
- 171 Millersburg Marigold Hanging Cherries Water Pitcher. Scarce pitcher
- 172 Millersburg Green Many Stars 9 1/4" ICS Bowl. Spectacular radium multi-color iridescence..
- 173 Millersburg Purple Hanging Cherries Large ICS Bowl. Shallow flake on edge of collar base
- 174 Fantastic Millersburg Marigold Blackberry Wreath 6" Plate.
- 175 Millersburg Green Peacock 5 1/2" Sauce.. Radium with nice color
- 176 Northwood Marigold Memphis punch Set, Including Six Punch Cups. Punch Bowl Has Two Large Chips on Flutes.
- 177 Beautiful Northwood Ice Blue Memphis Fruit Bowl, Base & Five Punch Cups. Has shallow flake on point of fruit bowl
- 178 Beautiful and Scarce Northwood White Memphis Fruit Bowl & Base. Frosty top & radium Base
- 179 Fantastic Northwood Memphis Green Fruit Bowl & Base. Completely Emerald Green on Inside of Bowl. Super on Outside with Great Base.
- 179A Four Northwood Green Memphis Punch Cups. (Sold Choice)
- 180 Northwood Memphis Emerald Green Punch Cup.
- 181 Dugan White Lined Lattice 10 1/2" Vase.
- 182 Millersburg Marigold Hobnail Swirl 9 1/4" Vase. Radium and Great Iridescence
- 183 Northwood Marigold 6 3/4" Jip Fine Rib Vase.
- 184 Northwood Electric Purple 10" Fine Rib Vase. Very difficult to find nice
- 185 Northwood Ice Green Corn Vase.
- 186 Dugan Blue Big Basketweave 10 1/2" Vase.
- 187 Dugan Electric Purple Holly & Berry 7 1/2" Ruffled Bowl.
- 188 Dugan Peach Opal Six Petals Tri-Cornered Bowl.
- 189 Dugan White Six Petals 8" Ruffled Bowl. Beautiful frosty iridescence
- 190 Fenton Red Orange Tree ICS Bowl.



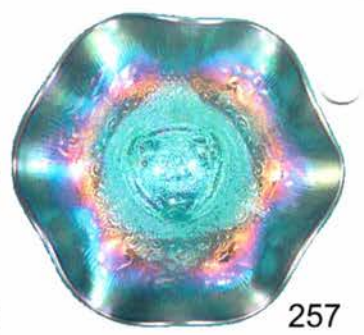
189



150



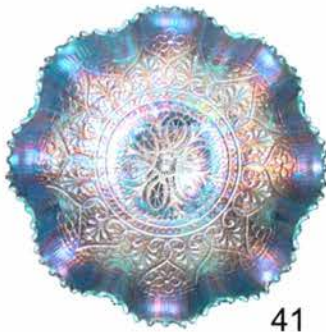
120



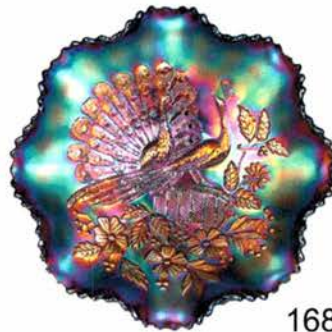
257



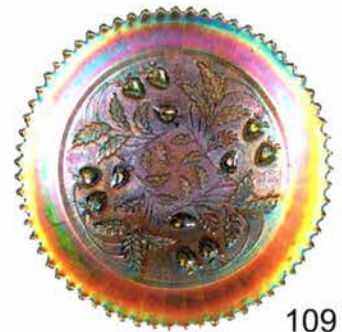
105



41



168



109



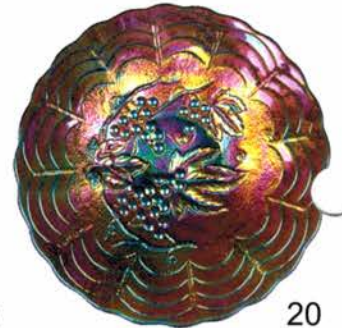
147



175



146



20



176



177



70



265



267



269



271



268

Please visit our website for a complete listing and photos of every item in the auction at:

www.remmenauction.com



154



157



182



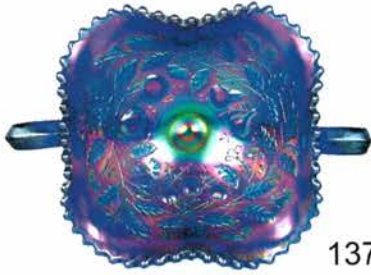
184



83



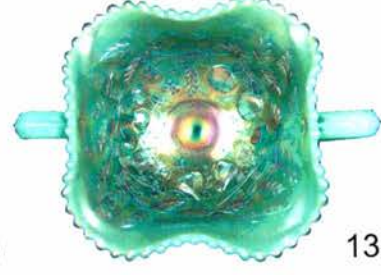
84



137



136



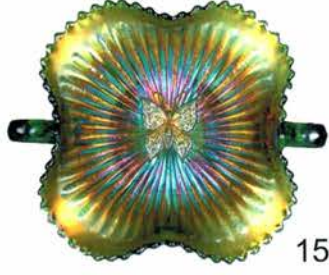
135



86



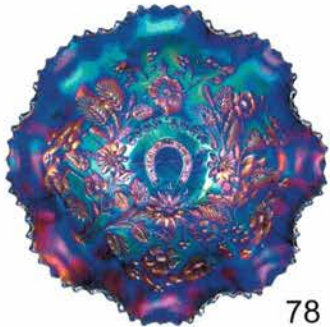
5



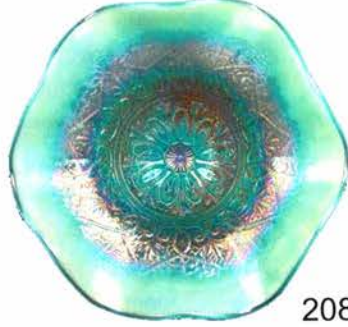
153



43



78



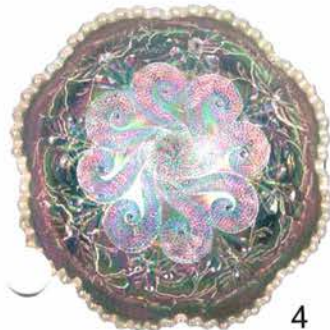
208



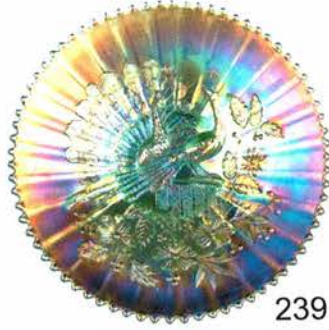
88



185



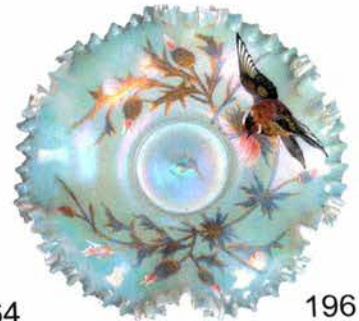
4



239



164



196

- 191 Fenton Red 6 1/2" Grape & Cable ICS Bowl. Super nice
- 192 Fenton Marigold Grape & Cable Fruit Bowl with Persian Medallion Interior.
- 193 Fenton Blue Grape & Cable Fruit Bowl with Plain Interior. Lots of blues & purples
- 194 Fenton Emerald Green Grape & Cable Footed Bowl.
- 195 Aurora Pearls 12" Hand Enameled Ruffled Brides Basket.
- 196 Beautiful Signed Austria Aurora Pearls Ruffled Brides Basket and Frame. Hand painted thistle flowers with bird. has minor iridescence loss
- 197 Northwood Marigold Rose Show Ruffled Bowl.
- 198 Northwood Electric Blue Rose Show Plate.
- 199 Northwood White Peacock at Urn Sauce.
- 200 Northwood Marigold Peacock at Urn Master ICS Bowl.
- 201 Northwood Purple Whiskey Decanter with Stopper. Has Typical Roughness on Inside Spout.
- 202 Northwood Marigold Grape & Cable Pitcher with One Tumbler.
- 203 Northwood Green Grape & Cable Pitcher Including Two Tumblers.
- 204 Northwood Purple Grape & Cable Tankard with ? Tumblers.
- 205 Northwood Marigold Grape & Cable Powder Jar.
- 206 Northwood Green Grape & Cable Powder Jar with Lid.
- 207 Northwood Pastel Marigold Poinsettia & Lattice Bowl.
- 208 Northwood Aqua Opal Hearts & Flowers Compote. One of the best
- 209 Imperial Teal 5" Smooth Panels Vase.
- 210 Imperial 7" Purple Morning Glory Vase.
- 211 Imperial Smoke Rococo Vase. Has tiny nick on base
- 212 Northwood Marigold 10" Parlor Panels Vase.
- 213 Imperial Marigold 10 1/2" Beaded Bulls eye Vase.
- 214 Imperial Purple 11 1/2" Beaded Bulls Eye Vase.
- 215 Imperial Smoke Ripple 12 3/4" Vase. 3 3/8" Base.
- 216 Imperial IG Smoke Ripple 13 1/2" Vase. 3 7/8" Base.
- 217 Imperial Marigold Morning Glory Funeral Vase.
- 218 Fenton Dark Marigold Orange Tree Loving Cup. Super Example
- 219 Blue Floral & Sunburst Bowl Straight Up with Flared Top. Rare Shape.
- 220 Rare Eda Blue Floral Sunburst 6 1/2" Spittoon Shaped Vase. Very beautiful with unique shape
- 221 Imperial Electric Purple Star of David Ruffled bowl.
- 222 Imperial Purple Shell & Sand Ruffled Bowl.
- 223 Imperial Smoke Acanthus Ruffled 7 1/2" Bowl.
- 224 Imperial Grape Dark Marigold Wine Decanter, Stopper and Six Goblets.
- 225 Imperial Marigold Octagon Wine Decanter. and Four Goblets. Stopper has Chip on Neck.
- 226 Imperial Diamond & Starburst Wine Decanter & Two Goblets. Decanter stopper has broken stem & chip on goblet base
- 227 Imperial Marigold Hobstar Canister with Lid.
- 228 Imperial Electric Purple Flute Tooth Pick & Nappy.
- 229 US Glass White Cosmos & Cane Tumbler.
- 230 Northwood Purple Grape Arbor, Fenton Marigold Lattice & Grape and Purple Butterfly & Fern Tumblers.
- 231 US Glass White Cosmos and Cane 8" Ruffled Bowl with Headdress Interior.
- 232 Fenton for Singleton Bailey Emerald Green Poppy Show Vase.
- 233 Fenton for Singleton Bailey Vaseline Opal Poppy Show Vase.
- 234 Fenton for Singleton Bailey Red Poppy Show Vase.
- 235 Fenton for Singleton Bailey Iridized Blue Burmese Poppy Show Vase.
- 236 Northwood Purple Grape & Cable Center Piece Bowl. Has nice electric highlights
- 237 Northwood Purple Grape & Cable Plate. Has manufacturing burn marks
- 238 Northwood White Peacocks Plate with Ribbed Exterior. Nice & Frosty
- 239 Northwood Ice Green Peacocks Plate with Ribbed Exterior.
- 240 Beautiful Northwood Green Peacocks Plate with Ribbed Exterior.
- 241 A Northwood Green Stippled Grape & Cable Punch Cup.
- 241 B Northwood Blue Grape & Cable Stippled Punch Cup.
- 242 Northwood Purple Grape & Cable Perfume Bottle.
- 243 Northwood Marigold Grape & Cable Perfume Stopper.
- 244 Northwood Purple Grape & Cable Shot Glass.
- 245 Dugan Dark Marigold Brooklyn Bridge Ruffled Bowl.
- 246 Dugan Marigold Pony Ruffled Bowl. Has nice satin iridescence
- 247 Dugan Purple Pony Ruffled Bowl. Very pretty
- 248 Fenton Marigold Large Stag & Holly Rosebowl. Has minor chip on marie
- 249 Fenton Dark Marigold 8" Spatula Footed Stag & Holly Ruffled Bowl.

- | | | | |
|-------|--|-----|--|
| 250 | Fenton Electric Blue Stag & Holly Large IC Shape Bowl. Originally belonged to Don Moore. | 264 | Rare Large Faceted Round Carnival Glass Hatpin. |
| 251 | Fostoria Green & Pink Brocaded Palms 10 sided, 2 Handled Plates. (Sold Choice) | 265 | Rare Large Penstar Carnival Glass Hatpin. |
| 252 | Fostoria Green Brocaded Palms 5" Sauce. | 266 | Rare Large Dimples & Brilliants Carnival Glass Hatpin. |
| 253 | Fostoria Green Brocaded Palms 10 Sided, large Bowl, 2 Handled. | 267 | Large Elegance Carnival Glass Hatpin. |
| 254 | Brocaded Daffodil Green & Pink 2 Handled Nappies, Two Sides Up. (Sold Choice) | 268 | Scarce Cherries Carnival Glass Hatpin. |
| 255 | Pink Brocaded Daffodil Center Handled Lemon Tray. | 269 | Only Known Swirling Hearts Carnival Glass Hatpin. Named by Wayne Anderson |
| 256 | Northwood Purple Leaf & Beads Footed Nut Bowl. Electric Interior | 270 | Only Known Large Blue Bee on Honeycomb Carnival Glass Hatpin. |
| 257 | Northwood Ice Blue Fine Cut & Roses Candy Dish with Fancy Interior. Chips on Feet. | 271 | Electric Blue Floral Carnival Glass Hatpin. One of two known. Pattern named by Sharon Mordini |
| 258 | Northwood Lavender Fine Cut & Roses Rose Bowl. | 272 | AIG Red/Marigold Contemporary Chrysanthemum Chop Plate. |
| 259 | Northwood Purple Fine Cut & Roses Rose Bowl Variant. Has no collar base | 273 | AIG Blue Contemporary Homestead Chop Plate. |
| 260 | Northwood Ice Blue Fine Cut & Roses Rose Bowl. | 274 | AIG Purple Contemporary Homestead Chop Plate. |
| 261 | Northwood Marigold Grape and Cable Hatpin Holder. | 275 | AIG Green Contemporary Homestead Chop Plate. |
| 262 | Triad Carnival Glass Hatpin. | 276 | AIG Red/Marigold Contemporary Homestead Chop Plate. |
| 263 A | Blue Rooster Carnival Glass Hatpin. | 277 | Set of Eight Pacific Northwest Carnival Glass Club Souvenir Fisherman's Mugs from 1986-93. (Sold Choice) |
| 263 B | Lavender Rooster Carnival Glass Hatpin 40-60. | | |

Remmen Auction would like to thank you all for attending.

Please plan to join us at the Northern California Carnival Club Convention in Fresno, California for our next auction on September 24th, 2005.

NOTES

Please visit our website for a complete listing and photos of every item in the auction at:
www.remmenauction.com

Remmen Auction & Appraisal Service

P. O. Box 301398 • Portland, Oregon 97294-9398
Phone: (503) 256-1226 • Cell Phone: (503) 756-2629

Presorted
First-Class Mail
U.S. Postage
PAID
Eugene, Oregon
Permit No. 305



38



61



63



17



193



10



9



34



204



171



53



56



55



54

*****AUTO**MIXED AADC 974
6562 T3 P1
LEE MARKLEY
PO BOX 306
MENTONE IN 46539-0306

