

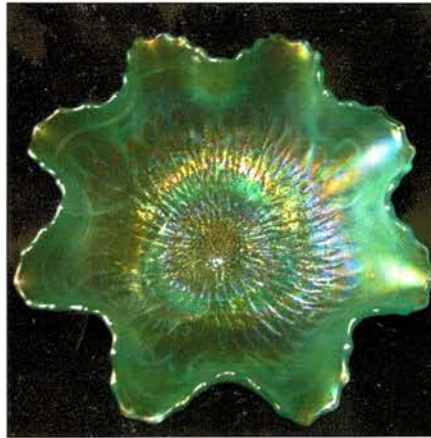
Lot # 110



Lot # 95



Lot # 100



Lot # 97



Lot # 115



Lot # 130



Lot # 10



Lot # 120

BURNS

AUCTION SERVICE

2005 A.C.G.A. Convention Auction

10 a.m. Friday, June 24, 2005

(preview 8:00 a.m. Friday & Evening prior)

at the **Sheraton - Lansing**

925 S. Creyts Rd., Lansing, MI 48917

517-323-7100

Exit 1 (S. Creyts Rd.) off I-496

This year it is our pleasure to bring to Lansing, Michigan, the annual A.C.G.A. Convention for 2005!

The featured glass is from the collection of Ray & Yvonne Steele from the great state of Michigan. They have wonderful examples including an extensive N Bushel Basket Collection.

The Convention runs from June 21 - 24th with the Auction being on the final day. This will be a really nice time of the year for a Convention and the Lansing Area has a number of nice Antique Malls to shop. It'll be a chance to see old friends and meet some new ones - hope to see ya there.

The Sheraton is located just off Exit 1 off I-496 and is a nice location for a big get together. for further info, call Mark Richter at 248-645-0811.

Mail Bids due by Thursday, June 23, 2005.

— BURNS AUCTION SERVICE —

Tom Burns
P.O. Box 608
Bath, New York 14810
(607) 776-7942 Cell: 731-9302

Bill Richards
44 Water Street, Poland OH 44514
(330) 757-2001
FAX (330) 757-4917

Bill Richards III
36 Water Street
Poland, OH 44514
(330) 757-2740

Mail Bids honored under the following conditions:

1. No deposit required. Bidders will take full responsibility to honor any and all bids we execute for them. Payment in full plus postage and handling required after notification and before we ship any item to them.
2. Items are bid on in perfect condition with average or above average iridescence OR as listed in the brochures. Bids will not be carried out when damage on an item has been found during the auction. **PEOPLE PRESENT AT THE AUCTION ARE RESPONSIBLE FOR FINDING ANY PINHEADS, WEAR, SPOTTINESS, MANUFACTURER'S DEFECTS OR ANY OTHER MINOR FLAWS, ETC.**
3. Successful bidders will be notified by collect call from the auctioneer **SO BE SURE TO INCLUDE PHONE NUMBER.**
4. Phone inquiries about the glass or any other questions are welcome.
5. If you have some other person at the auction bidding for you, they must pay for the item before taking it.
6. Any terms or conditions given the day of the auction will supersede any previously published information.
7. Mail, e-mail, fax and phone bids are due by Thursday, June 23, 2005

For photos of just about every item in every auction visit our website at:

<http://www.billrichardsauctioneers.com>

<http://www.woodslan.com/burnsauction/>

125 1. FENTON KITTENS HANDLED CUP & SAUCER - DK. MARI. (VERY DESIRABLE; NICE COLOR & IRID.)

110 2. Fenton Kittens Handled Cup & Saucer - Mari. (scarce w/ nice color & detail)

80 3. Fenton Kittens Handled Cup only - Dk. Mari. (nice dark color & detail)

75 4. Fenton Kittens Handled Cup only - Mari. (nice detail; scarce)

105 5. Fenton Kittens low Ruffled Toothpick Holder - Mari. (scarce; average color)

25 6. DUGAN QUILL TUMBLER - DK. MARI. (RARE * AND DESIRABLE W/ NICE COLOR & IRID.)

55 7. Dugan Quill Tumbler - Mari. (rare & desirable w/ nice average color)

160 8. (3) U.S. Glass Cosmos & Cane Tumblers - White (very scarce & desirable; really nice color; selling choice)

90, 25, 25 9. (4) U.S. Glass Cosmos & Cane Tumblers - Honey Amber (scarce; nice irid.; selling choice)

2250 10. FENTON DIAMOND RIB JARDINIERE - GREEN (VERY RARE & VERY DESIRABLE; NICE IRID.)

25 11. 8 3/4" Fenton Vintage Grape Ruffled Bowl w/ 3 in 1 Edge - Blue Opal. (not carnival; nice color & opal.)

350 12. 9 1/4" FENTON HOLLY FLARED PLATE - BLUE (A SUPER EXAMPLE W/ EXCELLENT IRID.)

40 13. Fenton Stretch ftd. Covered Powder Jar - Grecian Gold (scarce; nice color)

75 14. 14" Tall Czech Ribbed Interior Lg. Handled Flower Basket - Clear / Irid. (scarce; nice irid.)

165 15. HEISEY "PRINCESS" 3 FTD. IND. NUT CUP OR SALT - LT. MARI. (VERY RARE MINIATURE W/ NICE BRIGHT LIGHT IRID. - ONLY SEEN TWO)

10 16. 8" Tall N'wood Paneled Stretch Candlestick - Blue Opaque (scarce; nice)

25 17. 7 1/2" Tall N Fine Rib Squatty Swung Vase - Lime Green / Mari. (very scarce base color)

45 18. 10 1/2" Tall N Thin Rib Swung Vase - Dk. Mari. (super dark color w/ excellent irid.)

75 19. 10 1/2" N (?) Intaglio Fruit Lg. Ice Cream Shaped Bowl - Dk. Mari. (scarce; nice dark color & irid.)

385 20. 14" EUROPEAN RUFFLED CRIMPED EDGE BRIDE'S BASKET W/ ENAM. DECOR. - RUBINA VERDE (SUPER COLOR, IRID. & ENAM. DECOR.; MAY HAVE PINHEAD)

85 21. 8 1/2" Westmoreland Pearly Dots 6 Ruffled Bowl - Blue Opal. (scarce w/ nice opal.)

35 22. 7-8" Tall Dugan Paneled 6 Ruffled Vase - Purp. (scarce w/ nice irid.)

35 23. 9" Dugan Raindrops Domed 10 Ruffled Bowl - Amyth. (scarce; average irid.)

65 24. 7" M'burg Strawberry Wreath 6 Ruffled Bowl - Dk. Mari. (super radium irid.; nice item)

65 25. 7 1/2" M'burg Grape Wreath Variant Bowl w/ 3 in 1 Edge - Amyth. (radium & very desirable)

90, 225 26. 9 1/2" M'burg Nesting Swan 6 Ruffled Bowl - Green (very scarce w/ a satiny finish; has flake)

55 27. 9 1/2" M'burg Whirling Leaves 6 Ruffled Bowl - Mari. (satiny finish) *

30 28. Imperial Soda Gold (Crackle) Salt Shaker - Aqua Blue / Mari. (very scarce item w/ a nice irid.)

35 29. 8 1/2" Imperial Interior Wide Panel Flared Bowl - Dk. Mari. / Milk Glass (scarce w/ a dark overlay)

100 30. 10" IMPERIAL RIPPLE SWUNG VASE - VIOLET BLUE (RARE BASE COLOR W/ A NICE AVERAGE IRID.)

45 30A. 10" Imperial Rippled Standard Swung Vase - Amber (scarce color w/ wonderful irid.)

30 31. 10" Signed Imperial Jewels Flared Bowl w/ Manuf. Ground Base - Honey Amber (really nice irid. for this scarce item)

100 32. 7 1/2" Signed Imperial Jewels 4 sided Square Bowl - Mari. (nice color & irid.)

250 33. 7 1/2" IMPERIAL HEAVY GRAPE FLAT PLATE - LIME GR. - VASELINE / MARI. (VERY SCARCE & DESIRABLE BASE COLOR; NICE)

- 45 34. Imperial Grape Stemmed Wine Glass - Lime Green / Mari, (scarce base color)
- 110 35. 12 - 14" TALL IMPERIAL RIPPLE LG. MID SIZE SWUNG VASE - AMBER (VERY SCARCE SIZE IN A VERY SCARCE COLOR)
- 25 36. Imperial Flute Toothpick Holder - Mari. (nice color)
- 30 37. Imperial Grape Tumbler - Purp. (nice color)
- 20 x 35 38. (5) Imperial Grape Stemmed Wine Glasses - Purp. (scarce; selling choice)
- 10 x 5 39. (5) Imperial Flute ind. Round Berry Bowls - Purp. (great color; selling so much each for set)
- 1300 40. **IMPERIAL PANSY ROUND ONE HANDED NAPPY - COBALT BLUE (EXTREMELY RARE BASE COLOR W/ SUPER IRID.; ONE OF TWO I KNOW OF)**
- 75 41. 8 1/2" Dugan Fanciful low Ruffled Bowl / Plate - Lt. P. Opal. (very light opal.; satiny)
- 75 42. Dugan Cherry Wreath Spooner - Dk. Mari. (super irid.; nice & dark)
- 25 43. 10" Tall Dugan Pulled Loop Swung Vase - Mari. (satiny)
- 135 44. 10 1/2" Dugan Ski Star Lg. 6 Ruffled Bowl - Purp. (scarce w/ nice multi-colored irid.)
- 625 45. **N PEACOCK AT THE FOUNTAIN HANDED WATER PITCHER - WHITE (RARE & VERY DESIRABLE; SUPER FROSTY W/ NICE IRID.)**
- 25 46. N Peacock at the Fountain ind. Round Berry Bowl - Ice Blue (scarce w/ really nice color & irid.)
- 40 47. N Peacock at the Fountain Tumbler - Dk. Mari. (super color & irid.)
- 145 48. N Singing Bird Handled Covered Sugar Bowl - Dk. Mari. (scarce w/ nice dark color & irid.)
- 145 49. N Fine Cut & Roses ftd. Ruffled Rose Bowl w/ Fancy Int. - Lt. Ice Blue (scarce w/ nice feet & light color)
- 130 - 85 50. **(2) N DANDELION TUMBLERS - LAVENDER W/ SLAG EFFECT (RARE & VERY DESIRABLE VARIATIONS)**
- 225 51. N G&C 7 pc. Water Set - Purp. (very scarce set w/ excellent color & irid.)
- 100 52. N G&C Butter Base only - Purp. (scarce part w/ nice irid.)
- 115 53. 9" N G&C Flared Plate w/ Plain Exterior - Green (scarce variation; satiny)
- 100 54. N G&C 10 pc. Standard Size Punch Set - Dk. Mari. (damage on one flange; set is pretty)
- 300 55. **N GOOD LUCK STIPPLED 8 RUFFLED BOWL W/ RIBBED EXT. & NARROW BASE - BLUE (VERY SCARCE & VERY DESIRABLE; NICE IRID.)**
- 125 56. N Good Luck Bowl w/ P.C.E. & Ribbed Ext. - Dk. Mari. (super example w/ great color & irid.)
- 60 57. N Three Fruits Plate w/ Basketweave Ext. - Purp. (scarce; a really nice example)
- 80 58. N Poppy Ruffled Relish Tray w/ Ribbed Ext. - Blue (scarce item w/ nice irid.)
- 150 59. N Cherry & Cable Covered Sugar Bowl - Dk. Mari. (rare item w/ excellent dark color)
- 410 275 60. **N MEMPHIS 8 PC. RUFFLED FRUIT BOWL SET - DK. MARI. (REALLY ATTRACTIVE SET; GREAT IRID.)**
- 20 61. N Memphis Punch Base only - Purp. (nice color & irid.)
- 75 62. (2) U.S. Glass Stretch Ribbed Candlestick / Bud Vases - Celeste Blue (selling pair for one money)
- 5 63. Fenton Lattice & Grape Tumbler - Mari.
- 20 64. 6 1/2" Fenton Stippled Rays Flat Plate - Mari.
- 175 65. **(2) FENTON PANELED MID SIZE SWUNG VASES - COBALT BLUE (RARE PAIR OF PANELED VASES I DO NOT RECALL SEEING; SELLING SO MUCH EACH)**
- 70 66. 8 3/4" Fenton Peacock & Grape 8 Ruffled Bowl - Blue (nice irid.)
- 55 67. 8" Fenton Leaf Chain I.C. Shaped Bowl - White (really nice example of this item; great irid.)
- 55 68. 7 1/2" Fenton Mirrored Lotus I.C. Shaped Bowl - Mari. (scarce pattern in a scarce shape; satiny)
- 200 69. **FENTON KITTENS RUFFLED TOOTHPICK HOLDER W/ 2 SETS OF CATS - BLUE (VERY SCARCE & VERY DESIRABLE; HAS A MARI. OVERLAY)**
- 450 70. **M'BURG TROUT & FLY I.C. SHAPED BOWL - GREEN (RADIUM & VERY DESIRABLE)**
- 225 71. M'burg Peacock at the Urn "Mystery" Bowl w/ 3 in 1 Edge - Green (average radium finish; very scarce)
- 45 72. 6 1/2" M'burg Cosmos I.C. Shaped Bowl - Green (really nice radium finish)
- 75 73. 9 1/2" M'burg Whirling Leaves 6 Ruffled Bowl - Amyth. (odd light satiny finish)
- 30 74. M'burg Hobstar & Feather Handled Punch Cup - Mari. (nice color)
- 65 75. **M'BURG FLEUR DE LIS DOMED I.C. SHAPED BOWL - MARI. (VERY SCARCE & VERY DESIRABLE; RADIUM FINISH & MAY HAVE MINOR ROUGHNESS)**
- 65 76. M'burg Diamond Tumbler - Green (radium finish)
- 75 77. 3" Tall Plain Mini Bud Vase - Mari.
- 75 78. 9 3/4" M'burg Whirling Leaves 6 Ruffled Bowl - Green (nice satiny example)
- 125 79. 9 3/4" M'burg Peacock at the Urn Lg. Ice Cream Bowl - Amyth. (radium; has bee and no beading; has base problem)
- 425 80. **9 3/4" M'BURG NESTING SWAN 6 RUFFLED BOWL - AMYTH. (SUPER RADIUM & VERY NICE)**
- 155 81. **9 1/4" M'BURG NESTING SWAN 6 RUFFLED BOWL - MARI. (ANOTHER SUPER RADIUM EXAMPLE; REALLY NICE)**
- 120 82. N Fine Cut & Roses ftd. Ruffled Rose Bowl w/ Fancy Int. - Ice Blue (very scarce & very desirable; good feet)
- 75 83. N Fine Cut & Roses ftd. Ruffled Rose Bowl - Purp. (nice color & irid.)
- 45 84. N Fine Cut & Roses ftd. Ruffled Rose Bowl - Dk. Mari. (really nice example)
- 300 85. **N BEADED CABLE FTD. RUFFLED ROSE BOWL - ICE BLUE (RARE; VERY DESIRABLE; SUPER COLOR & IRID.)**
- 175 86. **N BEADED CABLE FTD. RUFFLED ROSE BOWL - WHITE (VERY SCARCE W/ GREAT IRID. & FROSTY FINISH)**
- 175 87. **N BEADED CABLE FTD. RUFFLED ROSE BOWL - AQUA OPAL. (EXCELLENT PASTEL EXAMPLE)**
- 125 88. N Beaded Cable ftd. Ruffled Rose Bowl - Blue / Elec. Blue (really nice base color w/ blue highlights)
- 95 89. N Beaded Cable ftd. Ruffled Rose Bowl -Purp. (dark color w/ really nice irid.)
- 55 90. N Beaded Cable ftd. Ruffled Rose Bowl - Dk. Mari. (super color & irid.)
- 60 91. N Beaded Cable ftd. Ruffled Rose Bowl w/ Ribbed Int. - Amyth. (nice satiny finish)
- 55 92. N Beaded Cable ftd. Ruffled Rose Bowl w/ Ribbed Int. - Green (satiny irid.)
- 425 93. **N HEARTS & FLOWERS STEMMED 6 RUFFLED COMPOTE W/ RIBBED EXT. - AQUA OPAL. (EXCELLENT PASTEL EXAMPLE W/ NICE IRID.)**
- 95 94. N Hearts & Flowers Stemmed 6 Ruffled Compote w/ Ribbed Ext. - White (scarce w/ nice irid.)
- 100 94A. **N HEARTS & FLOWERS 8 RUFFLED BOWL W/ RIBBED EXT. - MARI. (SORTA PASTEL EXAMPLE W/ NICE IRID.)**
- 20 94B. N Hearts & Flowers 8 Ruffled Bowl w/ Plain Ext. - White (scarce w/ nice frosty irid.)
- 3900 95. **N GOOD LUCK 8 RUFFLED BOWL W/ RIBBED EXT. - AQUA OPAL. (ABSOLUTELY SUPER PASTEL EXAMPLE W/ GREAT IRID.)**
- 450 96. **N GOOD LUCK 8 RUFFLED BOWL W/ RIBBED EXT. - ELEC. BLUE (VERY DESIRABLE W/ GREAT IRID.)**

- 500 96A. N EMBROIDERED MUMS 8 RUFFLED BOWL W/ RIBBED EXT. - ICE GREEN (RARE AND VERY DESIRABLE W/ NICE IRID.)
- 225 96B. N EMBROIDERED MUMS 8 RUFFLED BOWL W/ RIBBED EXT. - BLUE / ELEC. BLUE (RARE AND VERY DESIRABLE W/ NICE IRID.)
- 175 96C. N EMBROIDERED MUMS 8 RUFFLED BOWL W/ RIBBED EXT. - MARI. (VERY SCARCE AND VERY DESIRABLE W/ NICE IRID.)
- 475 97. N SUNFLOWER FTD. DEEP 8 RUFFLED BOWL W/ MEANDER EXT. - ICE BLUE (VERY RARE & VERY ATTRACTIVE; A SUPER ITEM)
- 50 98. N Sunflower ftd. 8 Ruffled Bowl w/ Meander Ext. - Amyth. (sorta odd base color; satiny)
- 150 99. N Memphis Punch Base only - Ice Green (great looking spare part; nice)
- 8500 100. N PEACOCK AT THE URN FLARED CHOP PLATE - ICE GREEN (EXTREMELY RARE ITEM; ONE OF 5 KNOWN EXAMPLES; HAS NICE GOLD HIGHLIGHTS)
- 750 101. N PEACOCK AT THE URN LG. I.C. BOWL - ICE GREEN (RARE; DESIRABLE W/ SUPER IRID.)
- 650 102. N PEACOCK AT THE URN LG. I.C. BOWL - ICE BLUE (RARE & DESIRABLE; NICE COLOR & IRID.; HAS A SPOT ON INSIDE)
- 850 103. N PEACOCK AT THE URN LG. I.C. BOWL - BLUE / ELEC. BLUE (RARE & DESIRABLE W/ BLUE HIGHLIGHTS)
- 400 104. N PEACOCK AT THE URN ALL OVER STIPPLED LG. I.C. BOWL - DK. MARI. (SUPER EXAMPLE W/ EXCELLENT IRID.)
- 200 105. N Peacock at the Urn All Over Stippled Lg. I.C. Bowl - Custard / Nutmeg (not carnival but one of the better examples you'll see)
- 650 106. N ROSE SHOW FLARED PLATE - ICE GREEN (RARE & DESIRABLE; NICE COLOR & IRID.; HAS CHIP ON BASE)
- 800 107. N ROSE SHOW FLAT PLATE - ICE BLUE (RARE & VERY DESIRABLE; NICE COLOR & IRID.; HAS CHIP ON ROSE)
- 125 108. N Rose Show Flared Plate - White (really nice color & irid.; very attractive) ✖
- 375 109. N Rose Show Flared Plate - Purp. (very scarce & very desirable; small chip on base)
- 1500 110. N G&C COVERED SWEETMEAT COMPOTE - COBALT BLUE (EXTREMELY RARE COLOR FOR THIS ITEM; SUPER COLOR & IRID.)
- 325 111. N G&C Coverd Sweetmeat Compote - Cobalt Blue (another rare example; chip on finial; base cracked)
- 85 112. N G&C Covered Sweetmeat Compote - Purp. (scarce w/ nice color & irid.)
- 45 113. N G&C Small Pin Tray - Purp. (scarce w/ nice color & irid.; slight ding on base)
- 165 ✖ 114. (2) N G&C Cologne Bottles & Stoppers - Purp. (really nice examples; selling choice)
- 3000 115. N GREEK KEY 8 RUFFLED BOWL W/ RIBBED EXT. - ICE GREEN (EXTREMELY RARE ITEM IN THIS COLOR; 1 OF 2 I KNOW OF; NICE)
- 1000 116. N HEARTS & FLOWERS LOW BOWL W/ P.C.E. & RIBBED EXT. - ELEC. BLUE (UNUSUAL LOW RUFFLED ITEM W/ EXCELLENT IRID. & COLOR)
- 400 117. N THREE FRUITS MEDALLION FTD. 8 RUFFLED BOWL W/ MEANDER EXT. - AQUA OPAL. (NICE PASTEL EXAMPLE; VERY SCARCE)
- 275 118. N Daisy & Drape ftd. Flared Vase - Aqua Opal. (very scarce & desirable; tilts a bit)

- 525 119. N THREE FRUITS STIPPLED PLATE W/ RIBBED EXT. - ELEC. BLUE (VERY ATTRACTIVE EXAMPLE W/ BLUE HIGHLIGHTS)
- 475 120. N DIAMOND POINT HANDLED BUSHEL BASKET - MARI. (RARE & VERY DESIRABLE; HAS NICE AVERAGE COLOR)
- 325 121. N EIGHT SIDED HANDLED BUSHEL BASKET - ICE GREEN (RARE & VERY DESIRABLE; EXCELLENT COLOR & IRID.)
- 375 122. N EIGHT SIDED HANDLED BUSHEL BASKET - ICE BLUE (ANOTHER RARE EXAMPLE W/ NICE COLOR & IRID.)
- 80 123. N Eight Sided Handled Bushel Basket - White (scarce; frosty & nice)
- 300 124. N EIGHT SIDED HANDLED BUSHEL BASKET - GREEN (RARE EXAMPLE W/ NICE COLOR & IRID.)
- 215 125. N EIGHT SIDED HANDLED BUSHEL BASKET - ELEC. BLUE (ACTUALLY A TOUGH ITEM TO FIND; NICE COLOR)
- 80 126. N Eight Sided Handled Bushel Basket - Dk. Mari. (very scarce w/ nice color & irid.)
- 300 127. N LEAF & BEADS FTD. ROSE BOWL - RENNINGER BLUE (RARE BASE COLOR W/ TYPICAL STEEL IRID.)
- 55 128. N Leaf & Beads ftd. Rose Bowl w/ Floral Int. - Mari. (satiny finish)
- 135 129. N Fruits & Flowers Stemmed Handled Bon Bon - Elec. Blue (super color w/ super irid.)
- 700 130. N ROUND HANDLED BUSHEL BASKET - SAPPHIRE BLUE (VERY RARE & VERY DESIRABLE; GREAT COLOR) ³⁵⁰
- 350 131. N ROUND HANDLED BUSHEL BASKET - AQUA BLUE (RARE & DESIRABLE ITEM W/ GREAT IRID.)
- 225 132. N ROUND HANDLED BUSHEL BASKET - AQUA OPAL. (RARE & DESIRABLE; NICE COLOR & OPAL.)
- 225 133. N Round Handled Bushel Basket - Aqua (rare base color w/ excellent irid.)
- 175 134. N Round Handled Bushel Basket - Aqua Opal. (very scarce w/ nice color & opal.)
- 175 ~~200~~ 135. N ROUND HANDLED BUSHEL BASKET - LIME ICE GREEN (RARE & DESIRABLE BASE COLOR W/ NICE IRID.) *check on*
- 145 136. N Round Handled Bushel Basket - Ice Green (very scarce w/ nice color & irid.)
- 400 137. N ROUND HANDLED BUSHEL BASKET - EMERALD GREEN (EXCELLENT EXAMPLE W/ BRIGHT INTERIOR IRID.) *check on*
- 250 138. N Round Handled Bushel Basket - Green (very scarce & very desirable)
- 75 139. N Round Handled Bushel Basket - White (scarce variation w/ a nice frosty finish)
- 300 140. N ROUND HANDLED BUSHEL BASKET - VIOLET BLUE (VERY RARE BASE COLOR NOT OFTEN SEEN; NICE) *check on*
- 225 141. N ROUND HANDLED BUSHEL BASKET - HOREHOUND (RARE BASE COLOR W/ NICE IRID.)
- 200 142. N Round Handled Bushel Basket - Amber / Horehound (odd base color w/ nice irid.) *check on*
- 60 143. N Round Handled Bushel Basket - Purple (scarce w/ nice color & irid.)
- 25 144. N Round Handled Bushel Basket - Amyth. w/ Streaks (odd item w/ nice color & irid.) *check on*
- 115 145. N ROUND HANDLED BUSHEL BASKET - OXBLOOD (SO DARK YOU CAN HARDLY SEE THROUGH IT; A TOUGHIE) #75 *check*
- 90 146. N Round Handled Bushel Basket - Amyth. (scarce w/ nice irid.)
- 90 147. N Round Handled Bushel Basket - Lt. Amyth. (scarce; a lighter base color; nice) *check on*

- 235 148. N Round Handled Bushel Basket - Blue (nice color & irid.)
- 85 149. N Round Handled Bushel Basket - Dk. Mari. (super color & irid.)
- 2250 150. **DUGAN FARMYARD 4 SIDED SQUARE FLARED RUFFLED BOWL W/ JEWEL HEART EXT. - PURP. (VERY RARE & VERY DESIRABLE ITEM W/ GREAT SHAPE & COLOR; EPOXY ON BACK OF ONE POINT)**
- 180 151. Dugan Grape Delight 6 ftd. Rose Bowl - Purp. (very attractive example w/ bright irid.)
- 145 152. 9" Imperial Pansy 8 Ruffled Bowl - Purp. (excellent color & irid.; nice)
- 95 153. 9" Imperial Pansy 8 Ruffled Bowl - Purp. (another example with really nice color & irid.)
- 35 154. 8" Imperial Embossed Scroll Deep Round Bowl - Purp. (nice color & irid.)
- 405 155. **6" IMPERIAL GRAPE FLAT PLATE - PURP. (A SUPER, SUPER EXAMPLE; GREAT IRID.)**
- 100 156. 7 1/2" Imperial Heavy Grape Flat Plate - Purp. (super irid.; really nice color)
- 15 157. Fenton Blackberry Bramble Stemmed 6 Ruffled Compote - Amyth. (satiny finish)
- 20 158. 12" Tall Fenton Diamond Point Columns Swung Vase - Amyth.
- 200 159. 10" Tall Fenton Fine Rib Standard Swung Vase - Vaseline (a non iridized example that has super color)
- 125 160. **FENTON HORSEHEAD MEDALLION 3 FTD. ROSE BOWL - MARI. / VASELINE (RARE & DESIRABLE W/ A LIGHT MARI. OVERLAY)**
- 53 161. Fenton Horsehead Medallion 3 ftd. Rose Bowl - Blue (very scarce & desirable; nice detail)
- 450 162. Fenton Horsehead Medallion 3 ftd. Rose Bowl - Mari. (nice color & irid.)
- 375 163. **9 1/4" FENTON PEACOCK AT THE URN FLAT PLATE - BLUE (VERY SCARCE W/ NICE MULTI-COLORED IRID.)**
- 295 164. **9 1/4" FENTON PEACOCK AT THE URN FLAT PLATE - MARI. (VERY SCARCE W/ NICE BRIGHT IRID.)**
- 195 165. **9 1/4" FENTON ORANGE TREE FLAT PLATE - BLUE (RARE & HAS A SATINY FINISH)**
- 425 166. **FENTON ORANGE TREE HANDLED SHAVING MUG - RED (RARE & VERY DESIRABLE; AN EXCELLENT EXAMPLE)**
- 65 167. Fenton Orange Tree Covered Powder Jar - Blue (nice color & irid.)
- 10 168. Fenton Orange Tree Stemmed Flared Compote - Mari.
- 25 169. Fenton Orange Tree Orchard Tumbler - Blue (nice irid.; has 2 tiny nicks on top edge)
- 725 170. **9 1/4" FENTON CHRYSANTHEMUM 8 RUFFLED BOWL - RED (AN EXCELLENT EXAMPLE; SUPER COLOR & IRID.; HAS FLAKE ON INSIDE EDGE)**
- 600 171. **8" FENTON PEACOCK & GRAPE SPATULA FTD. 8 RUFFLED BOWL - RED / AMBERINA (RARE & DESIRABLE W/ NICE IRID.)**
- 140 172. 5 1/2" Fenton Sailboats Round Flared Sauce - Brick Red (scarce base color w/ average irid.)
- 20 173. 5 1/2" Fenton Sailboats Round Flared Sauce - Mari.
- 5 174. Fenton Wreath of Roses Punch Cup w/ Persian Medallion Int. - Mari. (stenciled "Souvenir of So. Brooksville, Me.")
- 500 175. **9 1/2" FENTON ROSE TREE 8 RUFFLED BOWL W/ O.T. EXT. - MARI. (VERY RARE PATTERN W/ NICE COLOR, IRID. & DETAIL)**
- 215 176. **9" FENTON HOLLY BOWL W/ 3 IN 1 EDGE - DK, MARI. / VASELINE (A LOW RUFFLED EXAMPLE W/ A MARI. OVERLAY)**
- 165 177. 9" Fenton Holly 8 Ruffled Bowl - Green (an example w/ bright color & irid.)
- 50 178. Fenton Horsehead Medallion 3 ftd. Jack in the Pulpit Bowl - Mari. (nice color & shape)
- 25 179. 6" Fenton Persian Medallion Plate w/ O.T. Ext. - Mari. (nice color)
- 145 180. **FENTON PRAYER RUG 2 HANDLED 4 SIDED BON BON - MARI. / CUSTARD (RARE & DESIRABLE W/ A NICE MARI. OVERLAY; A TOUGHIE)**
- 45 181. Fenton Pond Lily 2 sided Handled Card Tray - White (scarce shape w/ nice irid.)
- 75 182. Fenton Two Row Open Edge 2 sided Hat - Aqua (scarce color & shape)
- 22 1/2 183. Fenton Two Row Open Edge 2 sided Hat - Mari.
- 20 184. Fenton Two Row Open Edge 4 sided Square Hat - Mari.
- 225 185. **FENTON TWO ROW OPEN EDGE 6 RUFFLED HAT - RED (A NICE EXAMPLE WITH GREAT COLOR & IRID.)**
- 175 186. **8 1/2" TALL FENTON FINE RIB STANDARD SWUNG VASE - RED (NICE COLOR & IRID.; A VERY SCARCE ITEM)**
- 25 187. 10" Tall Fenton Diamond Point Columns Swung Vase - Green (nice color)
- 5 188. Fenton Scale Band Tumbler - Mari.
- 5 189. Fenton Butterfly & Berry Tumbler - Mari.
- 170 190. **FENTON LATTICE & GRAPE TUMBLER - ELEC. BLUE (ABSOLUTELY SUPER EXAMPLE - THE BEST!)**
- 20 191. Fenton Lattice & Grape Tumbler - Dk. Mari. (really nice color)
- 40 192. Fenton Paneled Dandelion Tumbler - Green (satiny example) ✓
- 30 193. Fenton Paneled Dandelion Tumbler - Amyth. (etched "Tri-State Fair 1911 - Lucille Franklin")
- 22 1/2 194. Fenton Apple Tree Tumbler - Mari.
- 25 195. Fenton Butterfly & Fern Tumbler w/ Collar Base - Blue (nice satiny item)
- 30 196. Fenton Floral & Grape Tumbler - Blue (satiny example)
- 225 197. **N DANDELION / KNIGHTS TEMPLAR HANDLED MUG - MARI. (RARE & DESIRABLE W/ REALLY NICE COLOR & IRID.)**
- 200 198. N Dandelion / Knights Templar Handled Mug - Ice Green (rare & nice w/ a small chip on the base)
- 20 199. N Acorn Burr Tumbler - Mari. (nice color & irid.) 3 gms ✓
- 440 200. **N GRAPE ARBOR TUMBLER - SAPPHIRE BLUE (VERY RARE BASE COLOR NOT OFTEN FOUND - SUPER ITEM)**
- 22 1/2 201. N Grape Arbor Tumbler - Dk. Mari. (nice color & irid.)
- 70 202. N Peacock at the Fountain Tumbler - Dk. Purp. (super item; dark, dark color)
- 35 203. N Concave Diamond Stretch Tumbler w/ Coaster - Celeste Blue (a nice set; well matched)
- 20 204. N Raspberry Tumbler - Dk. Mari. (super color & irid.)
- 145 205. **N DANDELION TUMBLER - ICE BLUE (RARE & VERY DESIRABLE; REALLY NICE)**
- 80 206. **N ORIENTAL POPPY TUMBLER - WHITE (VERY SCARCE W/ NICE IRID.)**
- 60 207. N Oriental Poppy Tumbler - Purp. (nice color & irid.)
- 55 208. N Peach Tumbler - White (very scarce; nice irid.)
- 70 209. N Peach Tumbler - Blue (scarce item w/ blue highlights)
- 25 210. N G&C Tankard Tumbler - Dk. Mari. (scarce item w/ nice color & irid.)
- 17 1/2 211. N G&C Tumbler - Purp. (nice color & irid.)
- 22 1/2 212. N G&C Handled Punch Cup - Amyth. (nice irid.)
- 10 213. N Memphis Handled Punch Cup - Ice Blue (scarce item; nice) ✓
- 10 214. N Memphis Handled Punch Cup - Green (really bright base color)
- 225 215. **N G&C PERFUME BOTTLE & STOPPER - MARI. (RARE ITEM W/ NICE IRID.; TOP OF STOPPER ROUGH)**
- 15
Heart Band Tumbler green

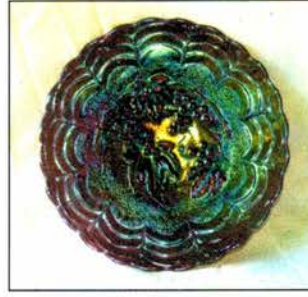
- 120 216. N Ivy Town Pump Novelty - Purp. (rare item w/ nice color; damage on base)
- 17/2217. 7-8" Tall N Feather Squatty Swung Vase - Mari. (satiny irid.)
- 65 218. 10-12" Tall N Diamond Point Swung Vase - Purp. (dark color w/ nice irid.)
- 325 219. 13-14" TALL N TREE TRUNK MID-SIZE SWUNG VASE - GREEN (RARE & DESIRABLE W/ NICE BRIGHT IRID.)
- 450 220. 10-12" TALL N THIN RIB STANDARD SWUNG VASE - SAPPHIRE BLUE (AN EXCELLENT EXAMPLE W/ A BRIGHT BASE COLOR)
- 95 221. N Fine Cut & Roses ftd. Ruffled Rose Bowl - Green (nice color & irid.)
- 35 222. N Fine Cut & Roses ftd. Ruffled Rose Bowl - Amyth. (nice irid.)
- 135 223. N Fine Cut & Roses ftd. 6 Ruffled Candy Dish w/ Fancy Int. - Aqua Opal. (a really nice pastel example; small chip on one foot)
- 20 224. N Fine Cut & Roses ftd. 6 Ruffled Candy Dish w/ Fancy Int. - Ice Blue (nice color & irid.) *
- 3500 225. N PEACOCK AT THE URN LG. ICE CREAM BOWL - ELEC. BLUE (AN ABSOLUTELY SUPER EXAMPLE W/ LOTS OF BLUES - REALLY, REALLY NICE)
- 80 226. N Peacock at the Urn ind. Ice Cream Bowl - Elec. Blue (desirable item w/ great color & irid.)
- 80 227. N Peacock at the Urn All Over Stippled ind. Ice Cream Bowl - Elec. Blue (another really nice example w/ blue highlights)
- 105 228. N Peacock at the Urn ind. Ice Cream Bowl - Ice Blue (a really nice example w/ pink highlights)
- 5 229. N Stretch Flower Frog - Celeste Blue (nice color)
- 350 230. N ROSE SHOW FLARED PLATE - MARI. (RARE & DESIRABLE; NICE COLOR; LIGHTER IN THE CENTER)
- 95 231. N Beaded Cable ftd. Ruffled Rose Bowl - Blue (really nice color & irid.)
- 55 232. N Beaded Cable ftd. Ruffled Rose Bowl - Dk. Mari. (super example; great color)
- 50 233. N POPPY OVAL RUFFLED RELISH TRAY W/ RIBBED EXT. - ICE BLUE (RARE & DESIRABLE; NICE COLOR & IRID.) *
- 95 234. N Poppy Oval Ruffled Relish Tray w/ Ribbed Ext. Blue (nice color; satiny finish)
- 425 235. N FRUIT & FLOWERS STEMMED HANDLED BON BON - AQUA OPAL. (VERY ATTRACTIVE PASTEL EXAMPLE; REALLY NICE IRID.)
- 475 236. N Three Fruits Stippled 8 Ruffled Bowl w/ Ribbed Ext. - Aqua / Sapphire (very rare color; great irid.; chip on edge)
- 10 237. N Stretch Ribbed Exterior Turned in Rose Bowl - Blue Opaque (nice color)
- 20 238. Pastel Swan Salt - Ice Green
- 5 239. (Maker?) Vintage Patterned Stemmed Wine Glass - Amyth. (very unusual item; not sure of Maker)
- 400 240. M'BURG SUNFLOWER PIN TRAY - DK. MARI. (RARE & AN EXCELLENT EXAMPLE W/ SUPER DARK COLOR & IRID.)
- 400 241. M'BURG SUNFLOWER PIN TRAY - AMYTH. (RARE & VERY DESIRABLE; PERFECT W/ NICE IRID.)
- 250 242. M'BURG SEACOAST PIN TRAY - AMYTH. (RARE & DESIRABLE W/ NICE AVERAGE IRID.) *
- 35 243. 7 1/2" M'burg Hanging Cherries 6 Ruffled Bowl - Amyth. (super radium finish-really nice)
- 37 244. M'burg Diamond Tumbler - Amyth. (nice color & irid.)
- 275 245. M'BURG HOBNAIL SPITTOON - DK. MARI. (RARE & VERY DESIRABLE; ATTRACTIVE)
- 10 246. M'burg Hobstar & Feather Handled Punch Cup - Mari. (nice color)
- 45 247. 8 1/2-9" M'burg Blackberry Wreath Bowl w/ 3 in 1 Edge - Mari. (light satiny finish)
- 75 248. 7 1/2" Cambridge Inverted Strawberry Ice Cream Shaped Bowl - Green (nice color & irid.)
- 25 249. Cambridge Double Star Tumbler - Green (nice color)
- 200 250. CAMBRIDGE INVERTED THISTLE TUMBLER - AMYTH. (VERY SCARCE & VERY DESIRABLE; SATINY)
- 80 251. Cambridge Inverted Strawberry Tumbler - Mari. (nice color & irid.; a bit out of round)
- 100 252. Cambridge Buzz Saw small size Cruet w/ no Stopper - Green (scarce item)
- 80 253. Devilbiss Perfume Bottle w/ Dobber - Dk. Mari. (really nice color & irid.)
- 10 254. Signed Heisey Paneled Oval Handled Tray - Lt. Mari. (nice irid.; scarce)
- 80 255. EUROPEAN RANGER 2 PC. TUMBLE UP - DK. MARI. (SUPER DARK COLOR & IRID.; ONE OF THE BETTER EXAMPLES)
- 40 256. South American "Sacic-Naranja Pomelo" Ashtray - Mari. (unusual item; spotty irid.)
- 100 257. SOWERBY DIVING DOLPHIN 3 FTD. 16 RUFFLED BOWL W/ EMBOSSED SCROLL INT. - MARI. (VERY SCARCE ITEM; HAVEN'T SOLD ONE IN A WHILE)
- 100 258. Sowerby Covered Hen Butter Dish - Mari. (scarce)
- 45 259. European Rose Garden Fernery - Blue (unusual item)
- 115 260. LIBBEY MAIZE CELERY VASE - LT. MARI. (SCARCE VICTORIAN ITEM W/ A NICE LIGHT MARI. OVERLAY & BLUE STAIN)
- 35 261. Czech Decorated Shade w/ Forest Scene - Frosted Irid. (neat item; very unusual)
- 55 262. Phoenix Shriners Commerative Tumbler - Syria Temple June 26 - 28, 1912 - Minneapolis, Minn. - Irid. Milk Glass - (Tri-paneled juice glass w/ stenciled commerative credits)
- 25 263. Imperial Flute Toothpick Holder - Purp. (nice irid.)
- 20 264. Imperial Flute Toothpick Holder - Mari. (nice color)
- 130 265. IMPERIAL CHATELINE TUMBLER - PURP. (VERY SCARCE & POPULAR ITEM W/ SUPER IRID. & MANUF. GROUND BASE) *
- 100 266. IMPERIAL OCTAGON LG. TUMBLER - PURP. (RARE COLOR FOR THIS PATTERN; A REALLY NICE EXAMPLE)
- 20 267. Imperial Grape Tumbler - Purp. (scarce w/ super irid.)
- 10 268. Imperial Star & File Tumbler - Mari. (nice color)
- 5 269. Imperial Star Medallion Lg. size Tumbler - Mari. (nice color)
- 250 270. IMPERIAL DIAMOND LACE 6 PC. WATER SET - PURP. (PERFECT W/ WELL MATCHED IRID.)
- 135 271. 8" Imperial Embossed Scroll 6 Ruffled Bowl w/ File Ext. - Purp. (nice irid. w/ really nice color)
- 35 272. 6" Imperial Embossed Scroll 6 Ruffled Sauce w/ File Ext. - Purp. (super irid.)
- 25 273. Imperial Crab Claw Tumbler - Mari. (nice color & irid.)
- 5 274. Imperial Grape Stemmed Wine Glass - Dk. Mari. (one of the better examples of this available item)
- 45 275. IMPERIAL CORN BOTTLE - HELIOS GREEN (VERY SCARCE ITEM W/ HELIOS IRID.)
- 45 276. 4 1/2" Tall Imperial Morning Glory & Drape Squatty Swung Vase - Dk. Mari. (scarce & very attractive)
- 22 277. 6" Tall Imperial Miniature Morning Glory Flared Vase - Mari. (nice color & irid.)
- 105 278. 8" Tall Imperial Ripple Small Size Swung Vase - Mari.
- 17 279. Imperial Pansy Oval Relish Tray - Mari. (nice irid.)
- 110 280. IMPERIAL DIAMOND SUNBURST 9 PC. WINE SET - MARI. (SCARCE PATTERN & SET TO FIND ANYMORE)
- 12 281. Imperial Fashion Tumbler - Mari.,



Lot # 116



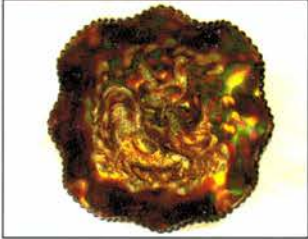
Lot # 40



Lot # 155



Lot # 119



Lot # 150



Lot # 170



Lot # 171



Lot # 163



Lot # 121, # 122



Lot # 20



Lot # 45



Lot # 85, # 87, # 86

Burns Auction Service

P.O. Box 608
Bath, New York 14810

First Class
US Postage
PAID
Permit No. 7
Hammondsport, NY

Carnival Glass Auction
10 am Friday, June 24!



Lot # 225

LEE MARKLEY
BOX 306
MENTONE IN 46539

46539+0306 08

