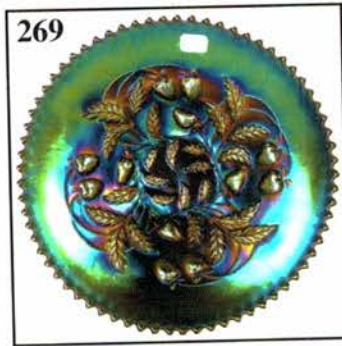
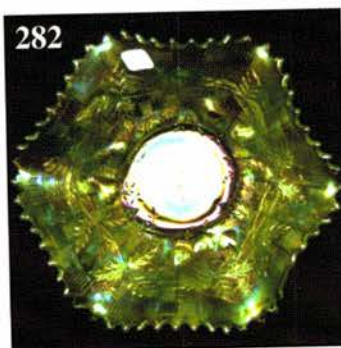
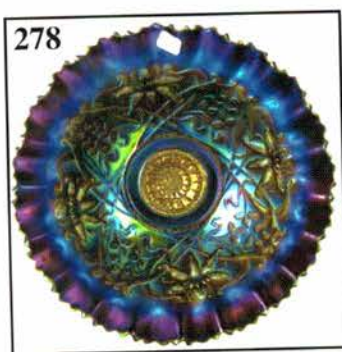
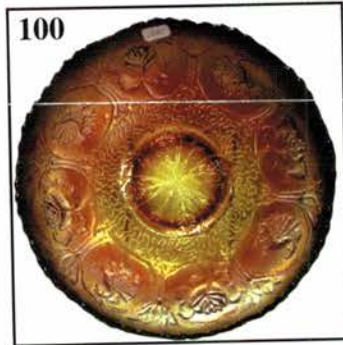
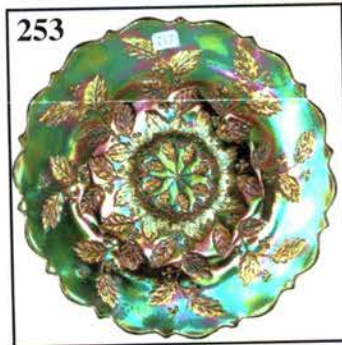
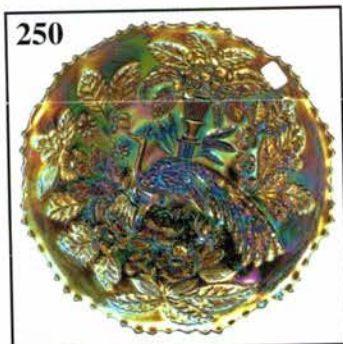
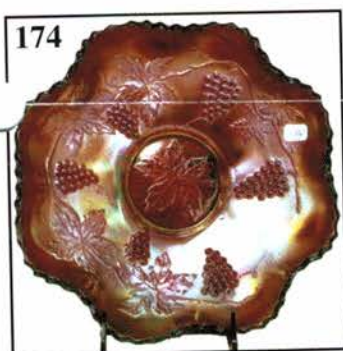
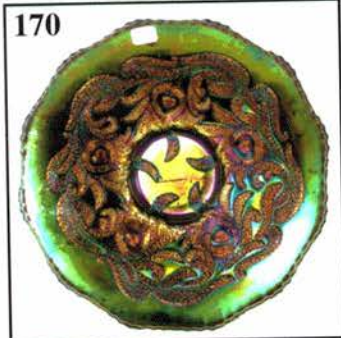


CARNIVAL GLASS AUCTION

Saturday, June 18, 2005 9:00 a.m. C.D.T.

SELLER: LEE FOSTER - ETAL. OF ILLINOIS
SELLING DUE TO HEALTH REASONS



Held By the Mickey Reichel Antique & Auction L.C.

Office: 660-882-5292 • Home: 660-882-5283

NEW WEB SITE: www.AWK-SHN.com

E-mail: mreichel@AWK-SHN.com

Held Inside the Mickey Reichel Auction Center

1 Mile North of I-70 on Hwy. 5, Exit 101, Boonville, Missouri • 20 Miles West of Columbia, MO on I-70



Preview Friday 12 p.m. - 5 p.m. and 7:30 a.m. - 9:00 a.m. Day of Auction

TERMS: Cash or Good Check, VISA and MasterCard accepted.



3% Clerking Fee on all purchases except for payment of cash or check. Proper I.D. required.

WEB SITE: www.AWK-SHN.com

ABSENTEE BID POLICY:

WRITE IN BIDS: If you are unable to attend the auction, we will be happy to accept absentee bids which must be received by THURSDAY, JUNE 16, 2005. Don't Delay. E-Mail: mreichel@AWK.SHN.com

FOR AUCTION PRICE RESULTS: Send \$3.00 and Large S.A.S.E. to 18350 Hunters Ridge Ct., Boonville, MO 65233-2971

PLEASE NOTE: There is a **\$5 handling charge for each successful bid which will be added to the selling price** for all write-in bids. This is in addition to the cost of postage, insurance and packing. Your write-in bid will be entered just as if you are present and bidding. **Successful bidders will be notified in 1 to 3 days by the auctioneer (so be sure to include your phone number).** Direct mail bids to Auctioneer Mickey Reichel, 18350 Hunters Ridge Ct., Boonville, MO 65233-2971. Terms: Cash or Check accepted with proper I.D. and Social Security Number and References. Announcements made day of the auction supercede all printed material. Not Responsible for Accidents or Sold Items.

No return on any items once they leave the Auction Center (No Exceptions).****

Call for additional information: 660-882-5292 days or 660-882-5283 evenings before 9:00 p.m.

FAX: 660-882-5292 (evening hours start FAX transmission after beep)

MAIL BIDS: Items are bid on in perfect condition with average or above iridescence OR as listed in the brochures. Bids will not be carried out when damage on an item has been found during the auction.

PEOPLE PRESENT AT AUCTION ARE RESPONSIBLE FOR FINDING ANY PINHEADS, WEAR, SPOTTINESS, MANUFACTURER'S DEFECTS OR ANY OTHER MINOR FLAWS, ETC. *****

NOTE: Read each line, as we have accentuated the type of no particular piece, all are special.

Make Reservations EARLY at one of these local motels:

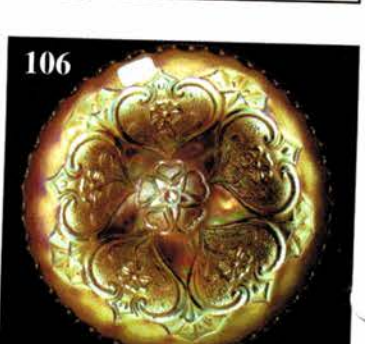
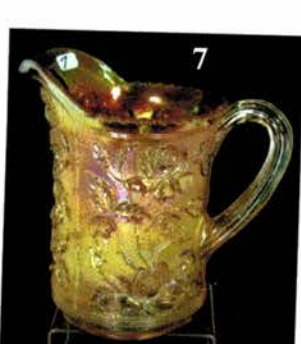
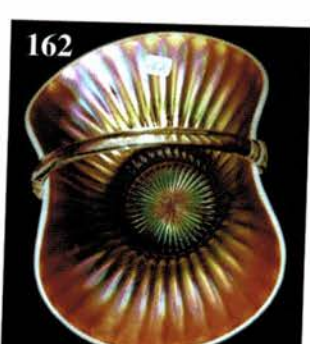
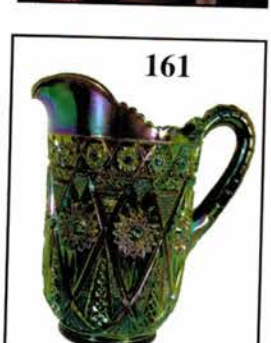
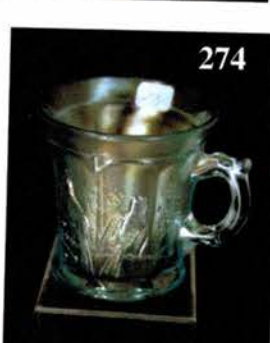
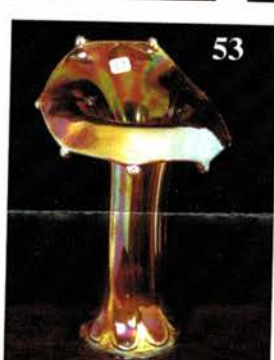
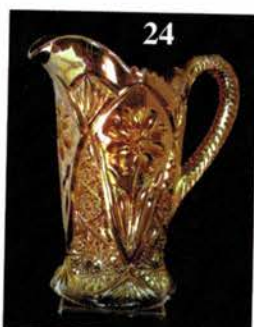
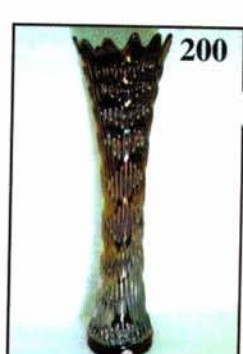
Days Inn: 660-882-8624 • Comfort Inn: 660-882-5317 • Super 8: 660-882-2900 • Holiday Inn: 660-882-6882

Auction Consists of Rarity, Great Irid. and Variety

THANK YOU FOR ATTENDING TODAY

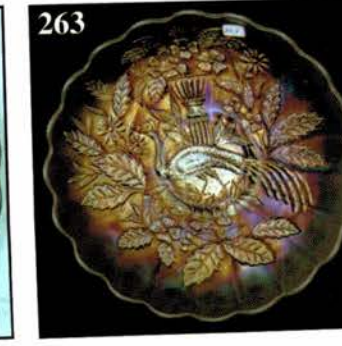
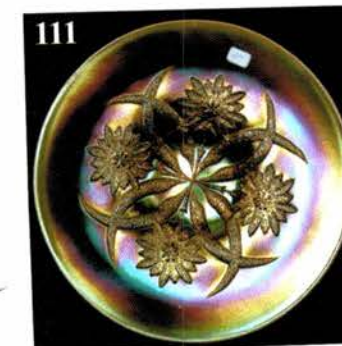
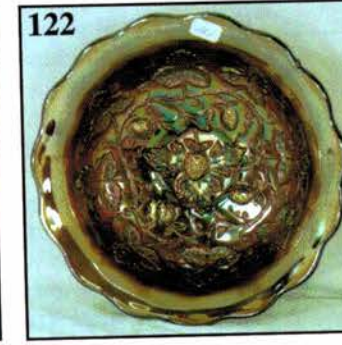
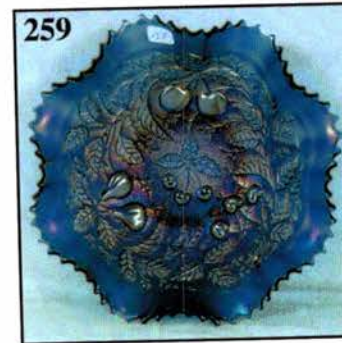
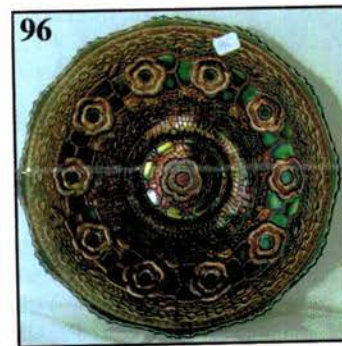
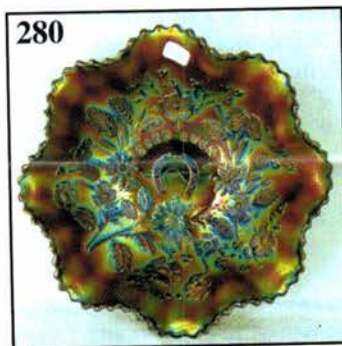
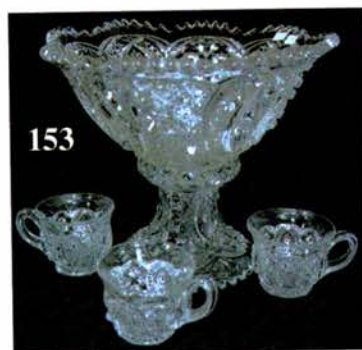
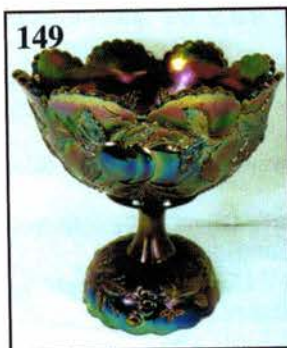
- | | |
|---|--|
| _____ 1. M-Tree Bark 7 pc. water set | _____ 13. M-Imp Octagon large water pitcher |
| _____ 2. G-Dugan Vineyard Water Pitcher and 4 tumblers-Extra nice | _____ 14. M-Imp Octagon tumblers--4 x \$ |
| _____ 3. M-Dugan Maple Leaf 7 pc. water set | _____ 15. Rich M-Imp Hobstar Band 7 pc water set |
| _____ 4. M-Fenton Enamel Dec. Magnolia and Drapery water pitcher | _____ 16. Rare G-N Oriental Poppy Tankard water pitcher--Cracked but beautiful |
| _____ 5. M-Dugan Floral and Grape water pitcher | _____ 17. Pumpkin M-Dugan Heavy Iris tankard water pitcher--Cracked, but very lovely |
| _____ 6. M-Fenton Floral and Grape Vt. tumblers-Dark and nice--6 x \$ | _____ 18. Rare M-Dugan Rambler Rose 7 pc water set |
| _____ 7. Super Pastel M-Imp Lustre Rose water pitcher | _____ 19. M-Imp Octagon tumblers with collar base--2 x \$ |
| _____ 8. M-Imp Lustre Rose tumblers--8 x \$ | _____ 20. Scarce Dark M-N Greek Key Pitcher and 5 tumblers |
| _____ 9. Dark M-Imp Grape water pitcher | _____ 21. M-Lattice and Grape tumblers--2 x \$ |
| _____ 10. M-Imp Grape tumblers--2 x \$ | _____ 22. P-N Raspberry milk pitcher-Great example |
| _____ 11. M-Imp Fashion water pitcher | _____ 23. Radium M-Imp Star Medallion milk pitcher |
| _____ 12. M-Fenton Apple Tree 7 pc. water set-Real nice set | _____ 24. Rich radium M-Imp 474 milk pitcher |
| | _____ 25. M-Imp Poinsettia milk pitcher |
| | _____ 26. G-Imp 7" round Open Rose bowl |
| | _____ 27. M-Imp Grape 6 3/4" round bowl |

- _____ 28. **M-Imp Open Rose 5 3/4" rosebowl**
 _____ 29. Helios G-Imp Pansy 9" ruffled bowl
 _____ 30. **M-Imp Pansy 8 1/2" ruffled bowl-Good color**
 _____ 31. M-Imp Pansy nappy-Dark
 _____ 32. **Helios G-Imp Pansy nappy**
 _____ 33. M-Imp Windmill 7" round bowl
 _____ 34. **Rare P-Imp Grape 6 1/2" plate-Electric**
 _____ 35. P-Imp Grape 5" round berry bowls--2 x \$
 _____ 36. **G-Imp Open Rose 9" flat plate**
 _____ 37. M-Imp Grape 9" plate-Fine, fine color
 _____ 38. **Beautiful Smoke-Imp Hattie 8 3/4" round, flared bowl**
 _____ 39. Pumpkin M-Imp Hattie 8 3/4" round, flared bowl
 _____ 40. **Great Radium M-Imp Scroll Embossed 9" ruffled bowl-File ext**
 _____ 41. P-Imp Scroll Embossed 7 3/4" ruffled bowl-File ext-Radium silver
 _____ 42. **Helios G-Imp Open Rose 5" rosebowl**
 _____ 43. G-Imp Heavy Grape 7 3/4" plate
 _____ 44. **Amber-Imp Pansy creamer and sugar-Scarce**
 _____ 45. Gorgeous Smoke-Imp Diamond Ring 9" ruffled bowl
 _____ 46. **G-Imp Corn bottle-Great little find**
 _____ 47. M-Imp Little Barrel-Chip on neck
 _____ 48. **G-Imp Ripple 14 3/4" vase-3 7/8" base, 6 1/2" flared opening**
 _____ 49. Teal-Imp Ripple 10 1/4" vase-3" base, which glows
 _____ 50. **G-Imp Ripple 8" tall vase-2 7/8" base, 4 3/4" opening**
 _____ 51. P-Imp Ripple 9 1/4" vase-3 3/8" base, 5" opening-Very pretty
 _____ 52. **Radium M-Imp Ripple 10 3/4" vase-2 7/8" base, 3 1/2" opening**
 _____ 53. Super M-Imp Morning Glory 10 3/4" mid-size Jack-in-the-Pulpit Vase-Radium gem
 _____ 54. **M-Imp Thin Rib and Drape 5 1/2" miniature vase-Very desirable**
 _____ 55. G-N Thin Rib Vt. 9 3/4" vase
 _____ 56. **P-N Tree Trunk 11" Vase-Pretty**
 _____ 57. G-N Tree Trunk Vt. 9 1/2" vase-Alaskan effect
 _____ 58. **M-N Tree Trunk 7" squatty vase-5" opening**
 _____ 59. G-Fenton Rustic 11 1/4" vase-Loaded with color
 _____ 60. **P-Fenton April Showers 10 3/4" vase-Peacock Tail interior**
 _____ 61. P-Fenton Diamond and Rib 10 1/4" vase-Tulip top
 _____ 62. **Rich M-Fenton Long Thumbprint 11" vase-5 1/2" flared opening**
 _____ 63. Scarce Lav-Fenton Long Thumbprint 8" vase-5" opening
 _____ 64. **Lav-Fenton Fine Rib 9 3/4" vase-Tulip top, scarce color**
 _____ 65. Cobalt B-Fenton Panelled Diamonds and Bows 7 3/4" vase
 _____ 66. **Lav-Fenton Diamond Point Columns 7 1/4" squatty vase-Great iridescence**
 _____ 67. PO-Dugan Wide Rib 9 3/4" vase-3 3/4" base
 _____ 68. **PO-Dugan Target 5 1/2" squatty vase-3 7/8" base, 6" opening--Opal all the way down, a killer!**
 _____ 69. M-Imp Twins Fruit bowl and base-A beauty
 _____ 70. **BA-Dugan Wreathed Cherry large oval banana bowl**
 _____ 71. Great M-Dugan Wreathed Cherry large oval banana bowl
 _____ 72. **M-Dugan Peach and Pear large oval banana bowl-Seldom seen**
 _____ 73. M-Fenton Stag and Holly 10", ICS, ball-footed bowl-Great item
 _____ 74. **Beautiful M-Fenton Chrysanthemum/Windmill 10 1/2", ICS, ball-footed bowl**
 _____ 75. Dark M-Fenton Chrysanthemum/Windmill deep, 9 1/2", ruffled, footed fruit bowl
 _____ 76. **M-Fenton Thistle banana bowl-Waterlily and Cattails exterior**
 _____ 77. M-Fenton Butterfly and Berry round master bowl with 5 matching small bowls
 _____ 78. **A-Fenton Butterfly and Berry 4 place table set-Complete, nice, one repaired leg on sugar bowl**
 _____ 79. Pumpkin M-Fenton Two Flowers 9" footed bowl
 _____ 80. **Dark M-Fenton Cherry Circles 8 3/4" bonbon-Overlooked and undervalued**
 _____ 81. M-N Three Fruits 9" plate-Smooth exterior
 _____ 82. **Rare B-N Stippled Three Fruits Medallion spat ftd bowl**
 _____ 83. P-N Three Fruits Medallion spat ftd, ruffled bowl-Multi electric
 _____ 84. **M-N Greek Key ruffled bowl-Thumbnail size chip on rim**
 _____ 85. Pastel M-N 9" Strawberry plate-Smooth exterior
 _____ 86. **Electric B-N Grape and Gothic Arches 8 1/2" deep, round master berry bowl**
 _____ 87. M-N Wishbone 8 3/4", ruffled, footed bowl
 _____ 88. **Pumpkin M-N round Bushel basket**
 _____ 89. M-Fenton Vintage (Grape) 8", CRE bowl
 _____ 90. **G-Fenton Heart and Vine 8", CRE bowl**
 _____ 91. A-Fenton Ribbon Tie 8", CRE bowl-Scarce shape
 _____ 92. **G-Fenton Ribbon Tie 7 1/2", ICS bowl**
 _____ 93. Rare M-Fenton Two Flowers ruffled, collar base bowl
 _____ 94. **G-Fenton Ten Mums 9 1/2", 3 in 1 edge, collar base bowl**
 _____ 95. Radium M-Fenton Holly 9 3/4" flat plate
 _____ 96. **B-Fenton Captive Rose 9" plate-Multi electric tints**
 _____ 97. Scarce A-Fenton Three Fruits 9 1/4" plate
 _____ 98. **Powder B-Fenton Acorn 7 1/2" ruffled bowl-Scarce and nice**
 _____ 99. M-Fenton Dragon and Lotus 8 1/4, ICS bowl-Collar base
 _____ 100. **Red Amberina-Fenton Dragon and Lotus 8 1/2", ICS bowl-Great rarity**
 _____ 101. M-Fenton Grape and Cable 7 1/2" ruffled bowl
 _____ 102. **Scarce B-Fenton Lions 6 1/4", round, flared bowl**
 _____ 103. M-Fenton Mikado ruffled compote-One of the better ones
 _____ 104. **M-Fenton Fentonia spooner-Scarce piece and lovely**
 _____ 105. P-Dugan Grape Delight nut bowl-Feet look good
 _____ 106. **Very Scarce M-Dugan Five Hearts 6 1/4" dome footed bowl-Not often seen**



- _____ 107. Radium M-Dugan Pony ruffled bowl
- _____ 108. **M-Dugan Persian Garden 7" flat plate-BW exterior-Loaded with pinks and blues**
- _____ 109. A-Dugan Question Marks stemmed bonbon
- _____ 110. **Electric P-Dugan seven ruffle Leaf Rays nappy**
- _____ 111. PO-Dugan Four Flowers 10 1/2" chop plate-Plain exterior, scarce piece
- _____ 112. **PO-Dugan Four Flowers 6 1/2" plates--Choice A, B, C or D**
- _____ 113. Super Radium M-Dugan Cosmos Vt. 10" ruffled bowl
- _____ 114. **M-Dugan Cosmos Vt. 9 1/2" ruffled bowl-Satin**
- _____ 115. Scarce G-Fenton Iris 7", low ruffled compote
- _____ 116. **BO-Westmoreland Pearly Dots 8 3/4", ruffled bowl**
- _____ 117. M-Fenton Leaf Chain 9", eight ruffle bowl-Outstanding irid.
- _____ 118. **Rich M-Fenton Two Flowers 10", ruffled, footed bowl**
- _____ 119. A-Fenton Feathered Serpent 10", six ruffle bowl-Way above average
- _____ 120. **P-Mlbg Hanging Cherries spooner-Great iridescence**
- _____ 121. A-Mlbg Hanging Cherries 9 3/4", ICS bowl
- _____ 122. **Radium A-Mlbg Blackberry Wreath 8", round, flared, scalloped bowl-Lovely front and back!**
- _____ 123. Radium M-Mlbg Holly Sprig 6 1/2" ruffled, crimped edge bowl
- _____ 124. **P-Mlbg Grape Wreath Vt. 7 1/4", 3 in 1 edge bowl-Superb**
- _____ 125. P-Mlbg Peacock at Urn 10", ICS bowl-Very desirable
- _____ 126. **A-Mlbg Peacock at Urn Variant 5 3/4", ICS bowl-Four tail feathers**
- _____ 127. A-Mlbg Peacock at Urn small mold 5 5/8", ICS bowls-Choice A, B, C, D or E
- _____ 128. **P-Mlbg Boutonniere ruffled compote-Satin**
- _____ 129. P-Mlbg Seacoast pin tray-High on everyone's want list
- _____ 130. **Superb P-Mlbg Sunflower pin tray-Electric color, finest I've ever seen**
- _____ 131. Teal-Mlbg Diamonds tumbler
- _____ 132. **M-Mlbg Leaf and Little Flowers ruffled compote-Radium**
- _____ 133. G-Cambridge Buzz Saw small cruet with crystal stopper
- _____ 134. **M-Imp Flute toothpick holder-Choice A or B**
- _____ 135. Scarce G-Imp Flute toothpick holder
- _____ 136. **G-N Stippled Grape and Cable punch cups--3 x \$**
- _____ 137. P-Imp Heavy Grape 6 1/4" bowl-Radium silver
- _____ 138. **PO-Dugan Leaf Rays spade shape nappy**
- _____ 139. M-Dugan Fishscale and Beads 6 1/2" ruffled bowl
- _____ 140. **PO-Dugan Flowers and Frames 8", ten ruffle deep bowl**
- _____ 141. PO-Dugan Single Flower 9 1/2", ten ruffle bowl-Great opal
- _____ 142. **Pastel PO-Dugan Dogwood Sprays 9", ten ruffle bowl**
- _____ 143. M-Dugan Holly and Berry tricorner nappy-Scarce color
- _____ 144. **M-Dugan Golden Harvest decanter with stopper-Lots of irid.**
- _____ 145. Beautiful M-Dugan Vineyard pitcher and 5 tumblers
- _____ 146. **Radium M-Dugan Heavy Iris 7 pc water set-Outstanding matched set**
- _____ 147. P-Dugan Heavy Iris tankard water pitcher
- _____ 148. **P-Dugan Heavy Iris tumbler-scarce**
- _____ 149. Fantastic P-Dugan Many Fruits Punch bowl, base, 4 cups-Electric and scarce
- _____ 150. **Rare M-N Grape and Cable Master punch bowl, base and eight cups-Pinks, blues and greens - Fantastic set**
- _____ 151. Scarce G-Fenton Wreath of Roses punch bowl, base, 3 cups-Vintage (Grape) interior-Great find
- _____ 152. **Nice M-N Peacock at Fountain punch bowl, base and 6 cups-Punch sets are hot!**
- _____ 153. Scarce Crystal-N Memphis punch bowl, base, 3 cups-Not iridized-Very desirable
- _____ 154. **Crystal-N 10 3/4" Memphis whiskey decanter with stopper-Not iridized**
- _____ 155. Rare Red-Peacock electric lamp-Outstanding color and few known - Outstanding
- _____ 156. **BA-Beaded carnival purse**
- _____ 157. Electric blue beaded oval carnival evening bag
- _____ 158. **M-Liberty Bell cookie jar with lid-Bicentennial issue**
- _____ 159. Radium M-Matching cup and saucer
- _____ 160. **M Flashed-Cruet with stopper-Blown applied handle - Unusual & Rare**
- _____ 161. Electric P-Imp Diamond Lace water pitcher
- _____ 162. **Rare PO-Dugan Caroline 8 3/4" handled basket-Smooth Ray interior**
- _____ 163. PO-Dugan Four Flowers 6", 8 ruffle bowl-Scarce shape for this pattern!
- _____ 164. **Rare W-Dugan Grapevine Lattice tumbler-Pretty pastel irid.**
- _____ 165. Super B-Fenton Orange Tree loving cup-Just the best
- _____ 166. **Scarce M-N Daisy and Drape vase with turned in top**
- _____ 167. Radium M-Imp Little Barrel
- _____ 168. **Smoke-Imp Little Barrel-Polished top**
- _____ 169. W Stretch-Ranger two handled cookie jar with lid-One of ??? known
- _____ 170. **B-Fenton Heart and Vine 9 1/4" flat plate-Outstanding iridescence!**
- _____ 171. A-Eat Paradise Sodas 6" advertising plate-Advertising is on fire now
- _____ 172. **Red-Fenton Blackberry Spray ruffled hat-A beauty**
- _____ 173. Red-Fenton 2-row, O.E. Blackberry ruffled hat
- _____ 174. **Cherry Red-Fenton Vintage (Grape) 10" ruffled bowl-Few known and nice**
- _____ 175. Red Amberina-Fenton Orange Tree mug-3 1/2" opening-Outstanding
- _____ 176. **M-Fenton Sailboats 6" ruffled bowl**
- _____ 177. G-Fenton Smooth Rays 6 1/2" plate-Three sides turned up
- _____ 178. **A-Westmoreland Louisa rosebowl**
- _____ 179. B-Fenton 2-row O.E. 5 3/4" ruffled bowl

- _____ **180. Yellow Vas Opal-Fenton Dragon and Lotus 9", ruffled, collar base bowl-Rare and lovely**
 _____ 181. M-Fenton Peacock at Urn 8 3/4" ruffled bowl
 _____ **182. M-Fenton Heart and Vine 7 1/2", CRE bowl**
 _____ 183. Dark M-Fenton Stippled Rays/Scale Band plate
 _____ **184. M-Bamboo 5 3/4" tall tumbler-Rare beauty**
 _____ 185. M Flashed-Punch Cup, Souv. of Vesta, Minn
 _____ **186. Marigold over Milkglass-Westmoreland Scales 8 1/2" ruffled bowl-Radium rarity**
 _____ 187. PO-Dugan Petal and Fan 6", 8 ruffle sauce bowl
 _____ **188. Dark M-Imp Lustre Rose 11" flared, footed centerpiece bowl**
 _____ 189. G-Imp Grape 4 1/2" round berry bowl
 _____ **190. G-Imp Open Rose 9 1/4" plate-Pretty nice**
 _____ 191. M-Imp Grape wines--2 x \$
 _____ **192. Celeste B-Pastel swan salt**
 _____ 193. Frosty W-Imp Poppy Show 12" vase-Marked IG
 _____ **194. W-Dugan Big Basketweave 5" squatty vase-Pastel gem**
 _____ 195. PO-Dugan Target 12" vase-Extra nice example
 _____ **196. A-Dugan Lined Lattice 8 1/2" vase**
 _____ 197. Ice G-N Drapery 8 1/4" vase-Very nice pastel hues
 _____ **198. Blue Opal-N Four Pillars 10" vase-Ribbed interior**
 _____ 199. Electric P-Imp Ripple 12" vase-Super piece
 _____ **200. Towering B-Fenton Rustic 23 1/2" plunger base vase-Just about the tallest one I've ever seen and real nice**
 _____ 201. P-Imp Ripple 12 3/4" tall-Another excellent electric example
 _____ **202. P-N Grape Arbor tumbler-Multi electric**
 _____ 203. B-Enamel Dec. Ground Cherries tumblers--6 x \$
 _____ **204. M-Dugan Grapevine Lattice tumblers--7 x \$**
 _____ 205. P-N Singing Birds tumblers--6 x \$--Outstanding group
 _____ **206. P-N Grape and Cable tumblers--2 x \$**
 _____ 207. M-N Raspberry tumblers--2 x \$
 _____ **208. P-N Raspberry tumbler**
 _____ 209. G-N Raspberry tumbler-Very scarce color
 _____ **210. G-N Grape and Cable tankard tumbler-Tough to find**
 _____ 211. G-N Oriental Poppy tumblers--2 x \$
 _____ **212. P-N Dandelion tumblers--2 x \$**
 _____ 213. Pumpkin M-N Dandelion tumbler
 _____ **214. P-N Acorn Burrs tumblers--2 x \$**
 _____ 215. M-N Acorn Burrs tumbler-Nice
 _____ **216. B-N Peach tumbler-Pretty**
 _____ 217. M-N Grape and Gothic Arches tumbler-Super
 _____ **218. B-N Grape and Gothic Arches tumbler**
 _____ 219. Celeste B-N Concave Diamonds tumbler
 _____ **220. M-N Grape Arbor tumbler**
 _____ 221. Radium A-Mlbg Diamonds tumbler
 _____ **222. Radium M-Mlbg Diamonds tumbler**
 _____ 223. M-Mlbg Feather and Heart tumblers--2 x \$
 _____ **224. Scarce G-Fenton Fluffy Peacock tumbler**
 _____ 225. A-Fenton Fluffy Peacock tumbler-Extra nice
 _____ **226. Scarce A-Fenton Panelled Dandelion tumbler**
 _____ 227. B-Fenton Ten Mums tumbler-Tough to find
 _____ **228. G-Cambridge Double Star 4" flared top tumbler-3 3/8" opening**
 _____ 229. G-Cambridge Double Star 4" flared top tumbler--Smaller 3" opening
 _____ **230. M-Fenton Waterlily and Cattails tumblers--2 x \$**
 _____ 231. B-Dugan Beaded Stork in Rushes tumblers--2 x \$
 _____ **232. M-Dugan Jewelled Heart tumbler-Scarce**
 _____ 233. M-Dugan Wreathed Cherry tumbler-Radium
 _____ **234. M-Fenton Bouquet tumblers--3 x \$**
 _____ 235. M-Dugan Lattice and Daisy tumblers--3 x \$
 _____ **236. M-Imp 474 tumbler-Unusual radium finish with a 3 1/2" flared opening**
 _____ 237. Limeish G-Imp Windmill tumblers--3 x \$--Bases glow
 _____ **238. Blue Violet-Inverted Strawberry tumblers, signed with B--4 x \$**
 _____ 239. W Stretch-Imp Floral and Optic 11" footed cake plate-Super
 _____ **240. Rich M-Brockwitz Headdress 12 1/2", six ruffle bowl-Curved Star exterior**
 _____ 241. M-Fenton Stag and Holly 7 1/4" spat ftd nut bowl--Extremely scarce shape
 _____ **242. M-Fenton Persian Medallion 8 1/2", ICS bowl-Rare Bearded Berry exterior**
 _____ 243. G-Imp Heavy Grape 8" plate
 _____ **244. M-Stork ABC 7 1/2" child's plate**
 _____ 245. G-N Tree Trunk Vt. 7" squatty vase-Alaskan effect
 _____ **246. M-Imp Snow Fancy, open sugar and creamer-Scarce set**
 _____ 247. A-Fenton Peacock Tail ruffled compote
 _____ **248. G-Fenton Three Fruits 9 1/2" plate**
 _____ 249. B-Fenton Peacock at Urn 8 3/4" ruffled bowl--Bearded Berry exterior
 _____ **250. B-Fenton Peacock at Urn 9" plate-Multi electric blues and purples**
 _____ 251. W-Fenton Peacock at Urn 9 1/4" plate-Frosty
 _____ **252. M-Fenton Peacock at Urn 7 3/4" ICS Bowl**
 _____ 253. G-Fenton Holly 9 1/4" plate-Beautifully iridized and scarce
 _____ **254. BA-Dugan Folding Fan 6 3/4" ruffled, CRE compote-Unusual color-Electric**
 _____ 255. Scarce M-N Grape and Cable ruffled open compote-Dark and nice
 _____ **256. Electric B-N Fruits and Flowers stemmed bonbon**
 _____ 257. Multi electric P-N Fruits and Flowers stemmed bonbon
 _____ **258. Scarce W-N Peacock at Fountain ruffled compote**
 _____ 259. Scarce Renninger B-N Stippled Three Fruits ruffled bowl-Rib exterior, thin base
 _____ **260. Rare Ice G-N Embroidered Mums 9" plate**
 _____ 261. Dark M-N Peacock at Urn 10 1/2" ICS Bowl
 _____ **262. Ice B-N Peacock at Urn 9 3/4" ICS Bowl-Lovely pastel**
 _____ 263. W-N Peacock at Urn 10 1/4" ICS Bowl-Frosty
 _____ **264. G-N Wishbone footed, ruffled bowl-Fantastic yellow, green and pink tones!**
 _____ 265. P-N Stippled Three Fruits 9 1/4" plate-Rib exterior
 _____ **266. Electric P-N Three Fruits 9" plate-Smooth exterior-A bad boy!**



- _____ 267. Deep B-N Rose Show flat 9 1/2" plate-Rainbow electric
- _____ 268. **Dark M-N Roes Show flat 9 1/2" plate-So nice**
- _____ 269. Deep P-N Strawberry 9" plate-BW ext-Electric blue and purple for days!
- _____ 270. **P-N Hearts and Flowers 8 1/2" ruffled bowl-BW exterior**
- _____ 271. Crystal with Gold reverse-Grape and Cable dresser tray-Very unusual, not iridized
- _____ 272. **P-N Grape and Cable 7 1/2" plate-BW exterior-Leaf center variant-Scarce size**
- _____ 273. Pumpkin M-N Singing Birds mug
- _____ 274. **Frosty Ice B-N Singing Birds mug-Rare**
- _____ 275. G-N Greek Key and Scales 8 1/2" ruffled bowl-Alaskan iridescence
- _____ 276. **Scarce BA-N round Bushel basket-electric interior**
- _____ 277. AO-N round Bushel basket-Dark butterscotch overlay
- _____ 278. **Monster electric P-N Wishbone 9 3/4", PCE bowl-BW exterior**
- _____ 279. A-N Grape and Cable 8 3/4" plate-BW exterior
- _____ 280. **P-N Good Luck ruffled bowl-Rib exterior-Awesome iridescence**
- _____ 281. W-N Rose Show ruffled bowl-Frosty with soft blue highlights
- _____ 282. **Rare Ice G-N Fruits and Flowers 7 1/4" ruffled bowl-BW exterior-Radium electric**
- _____ 283. M-Imp Grape 6 1/2" plate-Pretty piece
- _____ 284. **P-Imp Grape 6 3/8" plate-Electric and a dandy**
- _____ 285. Rich M-Fenton Pine Cone 6 1/4", 12-sided plate
- _____ 286. **Scarce B-Fenton Pine Cone 6 1/4" round plate**
- _____ 287. B-Fenton Cherry Chain 6 1/2" plate-Scarce Orange Tree exterior
- _____ 288. **Great PO-Dugan Four Flowers 6 1/2" plate-BW exterior-Full inch of opal**
- _____ 289. M-Dugan Persian Garden 6 1/4" plate-BW exterior-Very nice example
- _____ 290. **Dugan Blue-Apple Blossom Twigs 9" plate-Always in demand**
- _____ 291. P-Imp Grape nut bowl-Seldom seen in any color, especially purple
- _____ 292. **Helios G-Imp Open Rose 9" plate**
- _____ 293. M-Fenton Two Fruits divided bonbon
- _____ 294. **Scarce M-Dugan Stork in Rushes lattice band, handled basket from tumbler**
- _____ 295. B-Fenton Holly 8 1/2" ICS bowl
- _____ 296. **Deep B-Fenton Cherry Chain 10", ruffled bowl-Orange Tree exterior**
- _____ 297. G-Fenton Vintage (Grape) fernery-tough color
- _____ 298. **B-Fenton Orange Tree wine goblet**
- _____ 299. Scarce B-Fenton Orange Tree breakfast creamer and sugar
- _____ 300. **Rare Radium M-Rising Sun 7 pc water set-Incredible set-MUST SEE!**
- _____ 301. M-Jeannette Glass Iris and Herringbone Water Pitcher and 6 tumblers
- _____ 302. **Fantastic W-Fenton Enamel Dec. Dianthus banded tankard water pitcher**
- _____ 303. P-N Grape and Cable tumblers--3 x \$
- _____ 304. **M-Dugan Floral and Grape tumblers--2 x \$**
- _____ 305. P-Imp Diamond Lace tumbler
- _____ 306. **Rare Vas-Fenton Floral and Grape tumbler**
- _____ 307. B-Beaded Stork in Rushes tumblers--2 x \$
- _____ 308. **M-Fenton Bouquet tumbler-Above average**
- _____ 309. B-St. Clair Hobstar wine glass
- _____ 310. **Dark M-Banded Grape mug**
- _____ 311. P-N Grape and Cable powder jar base
- _____ 312. **RARE-Buzz Saw and File goblet-Few known**
- _____ 313. M-Buzz Saw and File stemmed sherbet-Ultra rare offering
- _____ 314. **A-Fenton Wreath of Roses stemmed bonbon**
- _____ 315. P-N Fruits and Flowers stemmed bonbon-Base chips
- _____ 316. **W-N Eight sided Bushel basket**
- _____ 317. Violet-Dugan Royal Lustre 10 1/4" float bowl and black amethyst base
- _____ 318. **M-Brockwitz Headdress 10 3/8" round, scalloped bowl-Curved Star exterior**
- _____ 319. Scarce M-Dugan Garden Path Vt. 7 3/4" nut bowl-Soda Gold exterior
- _____ 320. **M-Dugan Double Stem Rose 7 3/4" bowl**
- _____ 321. M-Dugan Double Stem Rose 8" bowl-Radium
- _____ 322. **PO-Dugan Single Flower 7", 10 ruffle bowl-Opal all the way to the base**
- _____ 323. M-Dugan Windflower 8 1/4" ICS bowl
- _____ 324. **M-Dugan Windflower 8 1/2", 10 ruffle bowl**
- _____ 325. M-Dugan Question Marks stemmed bonbon
- _____ 326. **M-Dugan Fishscale and Beads 7" ruffled bowl**
- _____ 327. G-N Poppy Variant 7" ruffled bowl
- _____ 328. **M-N Three Fruits 9" plate-Smooth exterior**
- _____ 329. P-N Daisy and Plume ruffled compote-Plain interior
- _____ 330. **Ice B-N Fine Cut and Roses rosebowl-Fancy interior**
- _____ 331. M-N Grape Leaves 9" ruffled bowl
- _____ 332. **P-N Lustre Flute breakfast creamer and sugar**
- _____ 333. Very Rare M-Fenton Waterlily and Cattails 7 3/4" master bowl with five 4 1/2" berry dishes-Quite a set
- _____ 334. **G-Fenton Little Flowers 8 3/4" round, flared bowl-Lots of blues**
- _____ 335. M-Fenton Stippled Rays 9 3/4", 3 in 1 edge bowl
- _____ 336. **G-Fenton Smooth Rays 9", 3 in 1 edge bowl**
- _____ 337. M-Fenton Smooth Rays 10 1/2" ruffled bowl
- _____ 338. **G-Fenton Pebbles bonbon with Honeycomb and Clover exterior-Great item**
- _____ 339. A-Fenton Vintage (Grape) 8 3/4", six ruffle bowl
- _____ 340. **Dark M-Fenton Butterfly and Berry 9 1/4" ruffled master berry bowl**
- _____ 341. A-Fenton Peacock Tail 6 3/4" round bowl
- _____ 342. **M-Fenton Peacock Tail 6 3/4", six ruffle bowl**
- _____ 343. A-Fenton Peacock Tail 5 1/2" round bowl
- _____ 344. **M-Fenton Scottish Thistle 6", CRE, ruffled compote**
- _____ 345. A-Fenton Wreath of Roses 6" ruffled compote
- _____ 346. **M-Fenton Coin Dot 8", six ruffle bowl-Nicely detailed**
- _____ 347. M-Fenton Coin Dot 9 1/4", six ruffle bowl
- _____ 348. **Dark M-Fenton Captive Rose 8 3/4", 3 in 1 edge bowl**
- _____ 349. M-Fenton Vintage (Grape) 7" ruffled bowl

350. M-Fenton Holly 8 1/4" ICS bowl-Neat shape
 351. M-Fenton Strawberry bonbon with strawberry in center-Scarce item
 352. M-Fenton Acorn 7 1/2" ruffled bowl
 353. M-Fenton Waterlily 6" ruffled, footed bowl-Dark and nice
 354. M-Fenton Waterlily and Cattails spooner
 355. B-Fenton Garland rosebowl
 356. M-Fenton Smooth Rays 9 1/4", 6 ruffle bowl
 357. Lime G-Fenton Smooth Rays 6 1/4" plate, 3 sides up-Marigold overlay
 358. M-Imp Star Medallion 8", 8 ruffle bowl
 359. M-Imp Star and File pickle dish-Radium and dark
 360. M-Imp Star and File 6 1/2" round bowl-Also nice
 361. M-Imp Star and File spooners-Choice A or B
 362. M-Imp Twins 9 3/4" fruit bowl (only)
 363. M-Imp Grape 9" ruffled bowl
 364. M-Imp Lustre Rose butter dish with lid
 365. M-Brockwitz Moonprint 9" ruffled bowl
 366. G-Imp Grape 9" round bowl
 367. G-Imp Grape 7" round bowl
 368. G-Imp Grape 5" round bowls--3 x \$
 369. P-Imp Open Rose collar base 7 1/2" round, flared bowl
 370. M-Imp Lustre Rose 5 1/4", ruffled bowl
 371. M-Imp Broken Arches punch cups--4 x \$
 372. M-Imp Crackle spittoon-Great example
 373. M-Westmoreland Basketweave and Cable creamer and sugar-One lid missing
 374. Scarce Radium M-Split Diamonds butter dish with lid
 375. M-Jeannette Glass Co. #5201 Candleholders-pair
 376. M-Dutch Boy and Girl novelty ashtray
 377. M-Pint Golden Wedding Whiskey Bottle-Good paper label
 378. M-Dugan Apple Blossoms 6", 8 ruffle bowl
 379. White Opaline-Butterfly and Berry 9 1/4" footed bowl-Contemporary
 380. Emerald Green-Singleton Bailey Poppy Show large ruffled vase-Limited production
 381. M-Imp covered turkey dish-Mkd IG
 382. Smoke-Imp large covered rooster dish-Mkd IG
 383. Dark Smoke-Imp Grape salt and pepper shakers-Mkd IG
 384. P-Fenton small hen on nest
 385. M-Scottie Dog covered powder dish
 386. AO-Fenton Hobnail bell-LLCGC 1980
 387. AO-Fenton Poppies rosebowl-LLCGC 1982
 388. AO-Frolicking Bears ruffled spittoon-ICGA 1981
 389. AO-Fenton Poppies whimsied JIP bowl from rosebowl-LLCGC 1982
 390. BA-Fenton Atlantis Jardiniere-Something special!
 391. P-Fenton Wild Strawberry large candy dish with lid-Lovely
 392. Ice B-St. Clair Holly Band mug
 393. Ice B-HOACGA 1982 Corn vase
 394. Ice G-HOACGA Good Luck hatpin holder-1980
 395. Red-ICGA Town Pump paperweight-In Appreciation
 396. P-ICGA Town Pump paperweight-In Appreciation
 397. B-Fenton 8" Leaf Chain plate-Large chip
 398. B-Fenton Flowers rosebowl-Polished feet
 399. B-Fenton Orange Tree sherbet-Base nick
 400. B-Fenton Vintage Grape fernery-Internal fracture
 401. M-Imp Grape tumbler-damaged base

SPECIAL NOTE:

NO SUNDAY CALLS, PLEASE!

Winning Absentee Bidders will be contacted Monday through Wednesday of the week following the Auction!

Thank You!

SEND ALL MAIL TO:

18350 Hunters Ridge Ct.
 Boonville, MO 65233

**WANTED - QUALITY CARNIVAL GLASS
 AND ANTIQUES**

*"We don't want all the Business,
 Just Yours."*

WE DO AUCTIONS RIGHT!!

2005 CALENDAR

7th Annual Extravaganza

July 9, 2005

*High End Antique Furniture, China and
 Fantastic Post Card Collection*

Saturday, July 23, 2005

Carnival Glass Auction at Boonville Center

Saturday, August 20, 2005

Carnival Glass Auction at Boonville Center

Saturday, September 17, 2005

Carnival Glass Auction at Boonville Center

Fri. & Sat., Oct. 14 & 15, 2005

*24th Air Capital Carnival Convention
 Wichita, KS*

www.AWK-SHN.com

MICKEY REICHEL
ANTIQUE & AUCTION, L.C.
18350 HUNTERS RIDGE CT.
BOONVILLE, MO 65233

PRESORTED
FIRST CLASS MAIL
US POSTAGE PAID
SEDALIA, MO
PERMIT 217

FIRST CLASS MAIL

SPECIAL INVITATION TO:

RETURN SERVICE REQUESTED

250



7*136*****MIXED AADC 650

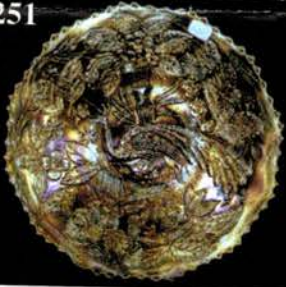
LEE MARKLEY

PO BOX 306

MENTONE, IN 46539-0306



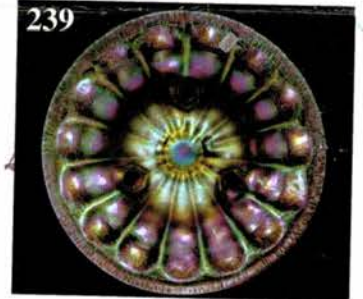
251



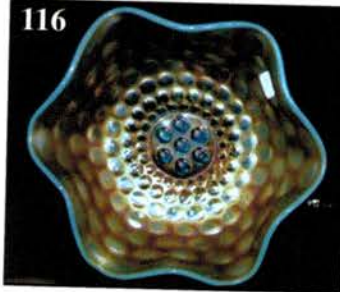
289



239



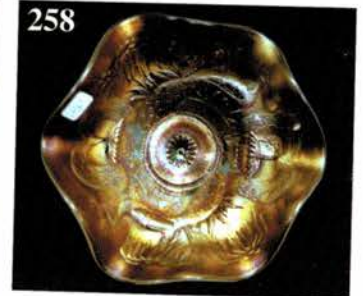
116



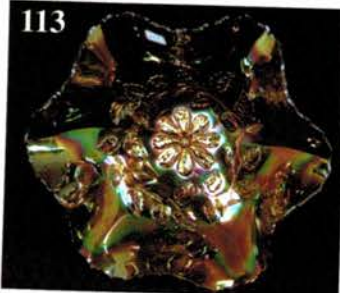
290



258



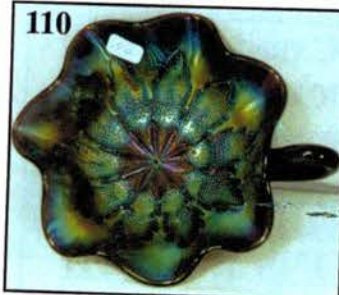
113



287



110



40

