

# *Seventh Annual Memorial Weekend Antiques and Collectibles Auction*

*Thursday May 26<sup>th</sup> - Friday May 27<sup>th</sup> and Saturday May 28<sup>th</sup>, 2005*

*Featuring:*

*2000 pieces of Fenton Glass, 2000 coins, Royal Bonn, Royal Bayreuth, Antiques, Porcelain,  
Lamps, Paintings, 1500 piece of Depression, 500 pieces of Contemporary Carnival glass,  
500 pieces of vintage carnival glass, 500 pieces of RS Prussia,  
1971 Ford Mustang Fastback, and more!*



*Midwest Auctioneers & Realty, Inc. &  
Jim Wroda Auction Services*

*5239 St. Rt. 49 South, Greenville, OH 45331*

# Seventh Annual Memorial Weekend Antiques and Collectibles Auction

Thursday May 26<sup>th</sup> - Friday May 27<sup>th</sup> and Saturday May 28<sup>th</sup>, 2005

2000 pieces of Fenton Glass, 2000 coins, Royal Bonn, Royal Bayreuth, Antiques, Porcelain, Lamps, Paintings, 1500 piece of Depression, 500 pieces of Contemporary Carnival glass, 500 pieces of vintage carnival glass, 500 pieces of RS Prussia, 1971 Ford Mustang Fastback, and more!

## Midwest Auction Facility

5239 ST RT 49 South Greenville, Ohio 45331 937-548-2640

**Directions:** From I-70 westbound take the Rt. 49 exit (24). Go approx. 25 miles North to Greenville and the Auction Facility will be on your right at the intersection of Rt. 49 and Rt. 127. From I-70 eastbound take the Rt. 127 North exit. Go approx. 20 miles to Rt. 49 exit. Turn left and the auction facility will be on your right

What a weekend we have in store for this year! We will be Auctioning several personal collections each day with all merchandise fresh to the market place. Everything here is from a personal collection not dealer rejects and old stock! This is a very rare opportunity to purchase some fantastic items! Make your plans now! There are a lot of happenings this weekend so please read the following to see what is selling on which day. **And don't forget the annual Hog roast and Chicken BBQ for everyone in attendance! This happens Friday night from 6pm to whenever!**

ALL items will be sold in catalog order. Please go to the website and print off the listing you are interested in. We have provided a listing in this catalog of the RS Prussia and the Vintage carnival glass. See the next page for the "line up" of this weekends events! [www.jimwrodaauction.com](http://www.jimwrodaauction.com)

We accept mail bids, phone in bids, faxed bids (937-548-3492), email bids and also LIVE phone bidding during the auction! Please contact us at 937-548-2640 or email us at [lwrodamidwest@earthlink.net](mailto:lwrodamidwest@earthlink.net) or [midwestauctions@earthlink.net](mailto:midwestauctions@earthlink.net). Do not hesitate to call. Faxed listings are available for those without internet accessibility.

All bids are bid competitively against the audience and in the condition that is mentioned in the catalog. If damage is found during the auction, bids on that item will not be executed. Midwest Auctioneers and Jim Wroda Auctions has the right NOT to execute any bid for any reason. We do not count manufacturing flaws as damage.

**Please read the terms and conditions of the auction before bidding. Please use preview times to view your items of interest! All items sold WITHOUT RESERVE and AS IS! All announcements day of auction take precedence of any and all printed information.**

**Important dates:** All phone in, email, mailed and faxed bids must be to us by Wednesday May 25<sup>th</sup> 5:00PM.

All live phone bid request must be made by Friday May 20<sup>th</sup> 2005, 5:00PM

**Security personnel and security cameras in use at all times!**

**\*\*\*\*To view over 1000 items go to: [www.jimwrodaauction.com](http://www.jimwrodaauction.com) \*\*\*\***

**Terms and Conditions of Auction:** Cash, Travelers checks, business or personal checks with proper I.D. We now have Visa/ MC and Discover with a 3% clerk fee. Ohio State Sales tax collected

All items being sold **AS IS** w\ NO MINIMUM and NO RESERVE!

**Hosting Hotel:** Holiday Inn-Greenville 937-548-1328 (special rate if you mention "Midwest Auctioneers")

**Other hotels:** Comfort Inn - 937-316-5252 and Greenville Inn (Allows small pets!): 937-548-3613

**Midwest Auctioneers & Realty, Inc and**

*Jim Wroda Auction Services*

**Jim Wroda and Mike Baker CAI- Auctioneers**

**Guest Auctioneers: Mr. David Jones, and Mr. Chuck Litteral**



Contemporary Carnival Glass Collection of

Mr. Ben Hershberger of Charm, Ohio

FRIDAY May 27<sup>th</sup>, 2005 between 2:30PM-3:00PM.



*Please join us at our  
Annual Memorial Weekend Hog & Chicken BBQ*

*Friday - 6:00 PM to 8:00 PM*

*Midwest Auction Facility*

*Under the Big Top*

*Open to all auction attendees on Friday and those who plan on attending Saturday.*

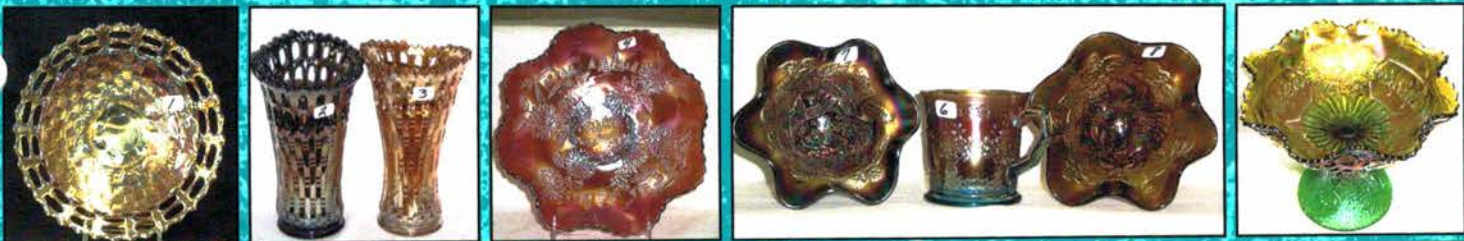
*Compliments of Midwest Auctions & Jim Wroda Auction Services*

## Carnival Glass Collection Saturday May 28<sup>th</sup> 2005 at 9:45 AM

- |  |   |
|--|---|
| <p>___ A. FENTON 6" PURPLE PARADISE SODAS PLATE</p> <p>___ B. Fenton 9" blue Persian Medallion plate</p> <p>___ C. N-WOOD 9" GREEN PEACOCKS PLATE W/EMERALD HIGHLIGHTS</p> <p>___ D. Dugan 9" white Fanciful plate</p> <p>___ E. FENTON 7" MARI. SOLDIERS &amp; SAILORS PLATE</p> <p>___ F. FENTON 7" BLUE SOLDIERS &amp; SAILORS PLATE</p> <p>___ G. N-WOOD 8 1/2" KILLER ELEC. BLUE HEARTS &amp; FLOWERS PCE BOWL. ONE HOT BOWL!!!!</p> <p>___ H. N-wood mari. Grape Arbor water pitcher.</p> <p>___ 1. FENTON 7" MARI. BLACKBERRY OE PLATE. RARE! A BIT SILVERY.</p> <p>___ 2. FENTON 6" BLUE BLACKBERRY OE VASE. VERY RARE! NOT MANY AROUND</p> <p>___ 3. FENTON 6" MARI BLACKBERRY OE VASE. ANOTHER RARE OE ITEM. NICE!</p> <p>___ 4. FENTON 8 1/2" RED CHRYSANTHEMUM RUFFLED BOWL. GREAT MULTI COLOR ON A VERY SCARCE BOWL.</p> <p>___ 5. Fenton 6" red G&amp;C round bowl. Scarce</p> <p>___ 6. Fenton aqua Orange Tree lg shaving mug.</p> <p>___ 7. FENTON RED PEACOCK @ URN RUFFLED COMPOTE. VERY RARE COLOR FOR THIS! HAS GREAT IRID!</p> <p>___ 8. Fenton green Peacock @ Urn ruffled compote. Scarce color.</p> <p>___ 9. FENTON GREEN MIKADO COMPOTE. HAS A COUPLE OF OPEN BUBBLES ON BASE. (NOT DAMAGE!) HAS BEEN A LONG TIME SINCE THIS HAS SOLD. VERY NICE BLUE IRID.</p> <p>___ 10. FENTON PURPLE MIKADO COMPOTE. ANOTHER RARE COLOR FOR THIS. BETTER "BUY IT NOW"!</p> <p>___ 10a Fenton blue Mikado compote. Nice example!</p> <p>___ 11. Fenton 8 1/2" aqua Thistle ruffled bowl. Very nice!</p> <p>___ 12. Fenton blue Butterfly and Fern water pitcher</p> <p>___ 13. Cam. BLUE inverted Strawberry 5" compote. RARE!</p> <p>___ 14. US Glass Honey amber Cosmos &amp; Cane butter dish</p> <p>___ 15. Fenton purple Florentine candlesticks. Rare color!</p> <p>___ 16. Dugan purple candlesticks</p> <p>___ 17. Imperial small mari. Zipper Loop finger lamp.</p> <p>___ 18. IMPERIAL MARI POPPY SHOW VASE. A BEAUTY!!!</p> <p>___ 19. CAM. GREEN COLOGNE BOTTLE. SCARCE W/NICE IRID!</p> <p>___ 20. M-BURG GREEN OHIO STAR VASE. WOW! KILLER BLUE IRID! A KEEPER!</p> <p>___ 21. M-BURG PURPLE OHIO STAR VASE. ANOTHER VERY NICE VASE! SCARCE</p> <p>___ 22. 2 N-WOOD 10" AO TREE TRUNK VASES. BOTH VERY NICE. CHOICE</p> <p>___ 23. N-WOOD 9" GREEN HEARTS &amp; FLOWERS PCE BOWL. THIS REALLY WANTS TO BE EMERALD! BEAUTIFUL!</p> <p>___ 24. N-WOOD 8 1/2" GREEN HEARTS &amp; FLOWERS RUFFLED BOWL. NICE!</p> <p>___ 25. N-WOOD 8 1/2" HOREHOUND 3 FRUITS RUFFLED BOWL W/ BW BACK. SCARCE COLOR.</p> <p>___ 26. N-wood mari Acorn Burrs water pitcher. Scarce</p> <p>___ 27. N-WOOD GREEN ACORN BURRS PUNCH SET W 6 CUPS. BEAUTIFUL MATCHED SET.</p> <p>___ 28. N-WOOD GREEN TREE TRUNK MID-SIZE VASE. VERY SCARCE COLOR AND NICE!</p> | <p>___ 28A. N-WOOD ELEC BLUE TREE TRUNK MID SIZE VASE. A WONDERFUL LOOKIN' VASE! SCARCE</p> <p>___ 29. N-wood 10" mari Peacock at Urn MIC bowl. NICE</p> <p>___ 30. N-WOOD 9" HOREHOUND STRAWBERRY PLATE W/ BW BACK. SCARCE</p> <p>___ 31. DUGAN ELEC PURPLE DAISY WEB JIP HAT. NICE!!!</p> <p>___ 32. M-BURG 10" PURPLE STRAWBERRY WREATH CRE SQUARE BOWL. NICE RADIUM COLOR ON A VERY SCARCE BOWL.</p> <p>___ 33. STRETCH FENTON 12" RED FLARED WIDE PANEL LOW BOWL. RARE!</p> <p>___ 34. STRETCH FENTON 10" RED WIDE PANEL CHOP PLATE. RARE!</p> <p>___ 35. Stretch Imperial 9" Teal Smooth panels vase.</p> <p>___ 36. 4 Fenton mari Fentonia tumblers</p> <p>___ 36a N-wood elec purple G&amp;C perfume bottle. NICE!</p> <p>___ 37. N-WOOD 9" PASTEL AO THREE FRUITS STIPPLED PLATE. OPAL MAINLY ON THE EDGE. RARE.</p> <p>___ 38. N-WOOD 9" ELEC. BLUE THREE FRUITS STIPPLED PLATE. SUPER.</p> <p>___ 39. N-WOOD 9"ELEC. BLUE THREE FRUITS STIPPLED PCE BOWL. KILLER COLOR!</p> <p>___ 40. N-WOOD 9" DARK MARI. G &amp; C STIPPLED PLATE. SCARCE.</p> <p>___ 41. N-WOOD 9" ELEC. BLUE PEACOCKS PLATE. SCARCE.</p> <p>___ 42. N-WOOD BLACK AMY. G &amp; C HATPIN HOLDER. BEAUTIFUL MULTICOLOR IRID.</p> <p>___ 43. M-BURG PASTEL MARI. SEACOAST PIN TRAY. RADIUM W/GREAT PRESSING &amp; COLOR. TINY NICK ON BACK OF PETAL.</p> <p>___ 44. Fenton 9" light amy. Holly plate. Great multicolor irid. Better than average.</p> <p>___ 45. DUGAN PURPLE S-REPEAT PUNCH SET W/9 CUPS. VERY RARE W/NICE ELECTRIC HIGH LIGHTS. PERFECT!!!</p> <p>___ 46. DUGAN MARI. DAHLIA 7 PC. WATER SET. EXTREMELY RARE WATER SET W/BEAUTIFUL BLUE IRID.!</p> <p>___ 47. DUGAN MARI. DAHLIA 4 PC. TABLE SET. SCARCE.</p> <p>___ 48. Dugan mari. Stork &amp; Rushes 4 pc. table set. Rare.</p> <p>___ 49. Dugan mari. Heavy Iris 7 pc. water set. Nice!</p> <p>___ 50. U.S. Glass elect. Purple Princess lamp w/hammered copper shade.</p> <p>___ 51. DUGAN 10" ELECT. PURPLE WISHBONE &amp; SPADES CHOP PLATE. A BEAUTY!</p> <p>___ 52. Dugan purple Stork &amp; Rushes Lattice Band mug.</p> <p>___ 53. Dugan purple 11" target vase. Nice!</p> <p>___ 54. Dugan white Dahlia creamer &amp; spooner w/gold &amp; blue decoration. Very Rare!!! Selling together.</p> <p>___ 55. Dugan white Floral &amp; Grape water pitcher.</p> <p>___ 56. Dugan 6" mari. Lattice &amp; Points ruffled bowl.</p> <p>___ 57. N-WOOD 9" ELEC. BLUE POPPY SHOW PLATE. FANTASTIC ELEC. IRID. HIGHLY DESIRABLE.</p> <p>___ 58. N-WOOD 9" IB POPPY SHOW PLATE. VERY SCARCE COLOR!</p> <p>___ 59. N-WOOD 9" PURPLE POPPY SHOW PLATE. VERY NICE!</p> <p>___ 60. N-wood 9" frosty white Poppy Show plate.</p> <p>___ 61. N-WOOD 9" IG EMBROIDERED MUMS PLATE. A LITTLE LIGHT IN COLOR.</p> |
|--|---|

*Visit our website! [www.jimwrodauction.com](http://www.jimwrodauction.com)*

*Carnival Glass Collection Saturday May 28<sup>th</sup> 2005 at 9:45 AM*



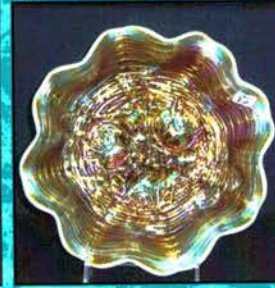
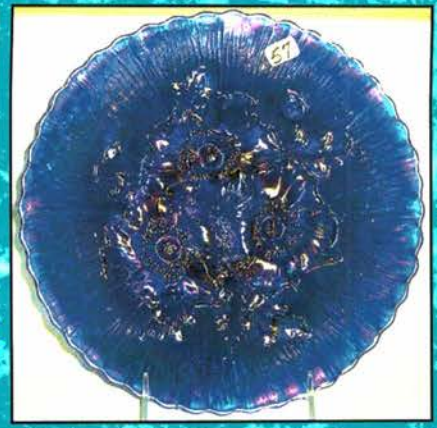
*Visit our website! [www.jimwrodaauction.com](http://www.jimwrodaauction.com)*

## *Carnival Glass Collection Saturday May 28<sup>th</sup> 2005 at 9:45 AM*

- \_\_\_ 62. N-WOOD 9" IB HEARTS & FLOWERS FLAT PLATE. EXCELLENT EXAMPLE!!!
- \_\_\_ 63. N-WOOD 9" ELEC. PURPLE HEARTS & FLOWERS PLATE. GORGEOUS!!!
- \_\_\_ 64. N-WOOD 10" IG PEACOCK AT URN MIC BOWL. NICE PASTEL IRID.
- \_\_\_ 65. N-wood 10" purple Peacock at Urn MIC bowl. Beautiful. As close to electric as you will ever get!
- \_\_\_ 66. N-WOOD 10" DARK COBALT BLUE PEACOCK AT URN STIPPLED MIC BOWL. VERY RARE BOWL.
- \_\_\_ 67. N-wood purple G & C standard punch bowl & base. BOWL IS STIPPLED, base is not.
- \_\_\_ 67A.(6) N-wood blue G & C stippled punch cups. Very rare. Selling 6X the money.
- \_\_\_ 68. N-WOOD GREEN MEMPHIS 8 PC. FRUIT SET. VERY RARE COLOR W/NICE IRID.
- \_\_\_ 69. N-wood purple G & C 8 pc. standard punch set. Super color!
- \_\_\_ 70. N-WOOD ELEC. PURPLE SINGING BIRDS WATER PITCHER. OUTSTANDING COLOR.
- \_\_\_ 70A. (2) N-wood purple Singing Birds tumblers.
- \_\_\_ 70B N-wood purple Acorn Burr water pitcher & 1 tumbler Nice.
- \_\_\_ 71. N-wood green 7 pc. G & C water wet. Scarce.
- \_\_\_ 72. N-wood mari. 7 pc. Peacock at Fountain water set.
- \_\_\_ 73. N-wood blue 7 pc. Ground Cherries water set. Beautiful enameling. Scarce.
- \_\_\_ 74. N-WOOD MARI. 7 PC. G & C TANKARD WATER SET W/CORRECT TUMBLERS. VERY RARE TO FIND COMPLETE SET.
- \_\_\_ 75. N-wood mari. G & C water pitcher w/2 tumblers. Nice.
- \_\_\_ 76. N-WOOD MARI. SPRINGTIME 7 PC. WATER SET. KILLER PASTEL BLUE IRID. VERY SCARCE.
- \_\_\_ 77. N-WOOD IB G & C BANANA BOAT. RARE!
- \_\_\_ 78. N-wood irid. Custard G & C banana boat.
- \_\_\_ 79. N-wood 6" purple Tornado vase. Small size w/very nice color.
- \_\_\_ 80. N-wood AO Dandelion mug. Scarce.
- \_\_\_ 81. N-wood AO Beaded Cable rosebowl.
- \_\_\_ 82. N-wood AO Daisy & Drape footed vase. Very scarce.
- \_\_\_ 83. N-wood 8 1/2" IB Nippon PCE bowl. Beautiful pastel irid.
- \_\_\_ 84. N-wood 9" purple Wishbone footed plate. Nice.
- \_\_\_ 85. N-WOOD 9" COBALT BLUE ROSE SHOW PLATE. VERY NICE!
- \_\_\_ 86. N-WOOD 8 1/2" BUTTERSCOTCH AO ROSE SHOW RUFFLED BOWL. SCARCE.
- \_\_\_ 87. N-WOOD 8 1/2" PASTEL AO ROSE SHOW RUFFLED BOWL. SUPER COLOR!
- \_\_\_ 88. N-WOOD 8 1/2" PURPLE ROSE SHOW RUFFLED BOWL. HALF STEP AWAY FROM BEING ELECTRIC.
- \_\_\_ 89. N-WOOD 9" ELEC. PURPLE G & C STIPPLED RUFFLED W/BW BACK. RARE AND BEAUTIFUL!
- \_\_\_ 90. FENTON 8 1/2" AO VINTAGE RUFFLED BOWL. LOTS OF OPAL. SCARCE.
- \_\_\_ 91. FENTON 8 1/2" AO VINTAGE 3/1 EDGE BOWL. VERY SCARCE. A TAD SILVERY.
- \_\_\_ 92. Fenton 8 1/2" dark mari. Concord ruffled bowl. Scarce.
- \_\_\_ 93. FENTON 9" MARI. HEART & VINE SPECTOR'S DEPT. STORE PLATE.
- \_\_\_ 94. Fenton blue 8 pc. Paneled Dandelion water set. Scarce.
- \_\_\_ 95. Fenton green 14" Rustic midsize vase.
- \_\_\_ 96. Fenton purple 14" Rustic midsize vase.
- \_\_\_ 97. Fenton green Fluffy Peacock water pitcher & 1 tumbler. Beautiful color.
- \_\_\_ 98. Fenton purple Fluffy Peacock 7 pc. water set. Very scarce!
- \_\_\_ 99. Fenton blue 6pc. Orange Tree water set. Beautiful color. May have couple tiny nips on toes. Scarce.
- \_\_\_ 100. Fenton mari. 6pc. Orange Tree water set. Nice dark color. Has couple tiny nips on toes. Scarce.
- \_\_\_ 101. Pink Stretch Fenton Guest set. Scarce
- \_\_\_ 102. Ice green stretch Fenton Guest set.
- \_\_\_ 103. Marigold Fenton guest set w/cobalt handle
- \_\_\_ 104. Celeste Blue Stretch Fenton Guest set w/cobalt handle.
- \_\_\_ 104a Celeste Blue Stretch Fenton tumble up.
- \_\_\_ 104b Mari. Stretch Fenton tumble up
- \_\_\_ 105. FENTON 9" RED DRAGON & LOTUS ICS BOWL. VERY SCARCE W/NICE COLOR.
- \_\_\_ 106. FENTON 9" AMY. ORANGE TREE PLATE W/TT CENTER. VERY HARD TO FIND PLATE
- \_\_\_ 107. Fenton 9" blue Orange Tree w/TT center. Nice.
- \_\_\_ 108. Fenton 9" green Captive Rose plate. Real nice multi-color irid.
- \_\_\_ 109. FENTON 9" AMY. HEART & VINE PLATE. SCARCE
- \_\_\_ 110. Fenton amy. Vintage epergne
- \_\_\_ 111. Fenton mari. Vintage epergne
- \_\_\_ 112. Fenton 9" mari Wild Blackberry ruffled bowl.
- \_\_\_ 113. Fenton celeste blue Concave Diamonds 7 pc water set. Very scarce!
- \_\_\_ 114. Fenton 5" red OE ruffled basket
- \_\_\_ 115. Fenton 6" red Stippled rays ruffled bowl. Scarce
- \_\_\_ 116. Fenton 6" mari Stippled rays plate.
- \_\_\_ 117. Fenton mari Wine & Roses 7 pc water set. Scarce
- \_\_\_ 118. Fenton 6" green Pine Cone plate.
- \_\_\_ 119. Fenton 10" red Fine Rib vase. Scarce!
- \_\_\_ 120. Fenton 9" mari. Water Lily footed bowl.
- \_\_\_ 121. Fenton mari. Fentonia 4 pc. table set. Very hard to find together.
- \_\_\_ 122. U.S. Glass 8" mari. Palm Beach square plate
- \_\_\_ 123. U.S. Glass 4" honey amber Palm Beach berry bowl.
- \_\_\_ 124. U.S. GLASS 6" WHITE OPAQUE IRID. PALM BEACH VASE. VERY RARE!
- \_\_\_ 125. U.S. Glass honey amber Palm Beach 6 pc. water set. Very scarce.
- \_\_\_ 126. U.S. Glass mari. Palm Beach rosebowl.
- \_\_\_ 127. U.S. Glass 7" mari. Palm Beach plate
- \_\_\_ 128. U.S. Glass 5" mari. Palm Beach Tri-corner berry bowl. Very scarce.
- \_\_\_ 129. U.S. Glass 5" white Palm Beach berry bowl w/Goose berry int..
- \_\_\_ 130. U.S. Glass white Palm Beach creamer.
- \_\_\_ 131. (4) U.S. Glass crystal Palm Beach pieces including water pitcher, cruet, handled nappy, & wine glass. Choice.
- \_\_\_ 131a U.S. Glass Palm Beach celeries: 1-white, 1-lime green. Not iridized. 2X money.

*Visit our website! [www.jimwrodauction.com](http://www.jimwrodauction.com)*

*Carnival Glass Collection Saturday May 28<sup>th</sup> 2005 at 9:45 AM*



Visit our website! [www.jimwrodauction.com](http://www.jimwrodauction.com)

## Carnival Glass Collection Saturday May 28<sup>th</sup> 2005 at 9:45 AM

132. M-BURG AMY. HOBNAIL WATER PITCHER. VERY RARE W/GREAT COLOR.
133. (2) M-burg green Hanging Cherries tumblers. Radium. 2X money.
134. M-burg 6" green Holly Sprig round bowl. Radium.
135. M-BURG 5" PURPLE ISAAC BENESCH RUFFLED BOWL. SCARCE.
136. M-burg 9" green Holly Whirl ruffled bowl. Nice color.
137. M-burg 6" purple Grape Wreath CRE bowl w/radium blue irid. Has Feathered Leaf in center.
138. M-BURG 9" RADIUM PURPLE PEACOCK AT THE URN LOW RUFFLED BOWL. NO BEE, NO BEADS. OUTSTANDING BLUE IRID.
139. M-BURG 7" PURPLE TROUT & FLY DIAMOND SHAPE BOWL. VERY SCARCE.
140. M-burg 9" purple Hanging Cherries Vt. 3/1 edge bowl. Very scarce bowl.
141. M-burg 9" purple Hanging Cherries ruffled bowl. Open bubble on base.
142. M-BURG 7" MARI. TROUT & FLY DIAMOND SHAPE BOWL. SCARCE.
143. M-BURG 6" PURPLE PEACOCK AT THE URN FLAT PLATE. NO BEE, NO BEADS.
144. M-burg 5" purple Peacock at Urn ICS bowl w/bee and beads.
145. M-BURG 5" BLUE PEACOCK AT URN RUFFLED BOWL. NO BEE, NO BEADS. VERY RARE BOWL.
146. M-BURG 5" BLUE PEACOCK AT URN ICS BOWL. NO BEE, NO BEADS. VERY RARE TO HAVE TWO OF THESE IN THE SAME AUCTION.
147. M-burg 7" mari. Hanging Cherries 3/1 edge bowl.
148. M-burg 7" purple Hanging Cherries ruffled bowl. Radium.
149. M-burg 8" mari. Trout & Fly ICS bowl. Rare!
150. M-burg 7" purple Peacock at the Urn shotgun 3/1 edge bowl. Radium
151. M-BURG 7" GREEN PEACOCK AT THE URN SHOT GUN 3/1 EDGE BOWL. RADIUM. VERY SCARCE.
152. M-BURG 7" MARI. PEACOCK AT THE URN SHOTGUN 3/1 EDGE BOWL. SATIN. SCARCE.
153. M-BURG PURPLE SUNFLOWER PIN TRAY. RADIUM.
154. M-burg 7" amy. Hanging Cherries ICS bowl.
155. M-burg 8" mari. Trout & Fly 3/1 edge bowl. Scarce.
156. M-burg 9 1/2" mari. Hanging Cherries ruffled bowl.
157. M-burg 7" mari. Holly Sprig tri-corner bowl w/radium blue irid. Super!!
158. M-BURG PURPLE HOBNAIL SWIRL SPITTOON. RADIUM W/EXCELLENT IRID.
159. M-burg 8 1/2" mari. Peacock at the Urn ruffled bowl. Bee, No beads.
160. M-BURG RADIUM MARI. MARILYN WATER PITCHER. VERY RARE. ONLY ONE I'VE SEEN RADIUM!!!
161. M-BURG PURPLE MARILYN 7 PC. WATER SET. SATINY W/EXCELLENT IRID.
162. M-BURG PURPLE FEATHER & HEART 6 PC. WATER SET. TINY NICK ON ONE TUMBLER. VERY SCARCE.
163. M-BURG GREEN FEATHER & HEART WATER PITCHER.
- 163a M-burg radium green Feather & Heart tumbler. Very scarce in radium.
164. M-BURG MARI. FEATHER & HEART 7 PC. WATER SET. ANOTHER HARD TO FIND WATER SET.
165. M-BURG PURPLE DIAMONDS 6 PC. WATER SET. RADIUM.
166. M-BURG MARI. DIAMONDS 7 PC. WATER SET. RADIUM.
167. IMPERIAL ELEC. PURPLE FLUTE 6 PC. WATER SET. VERY RARE WATER SET.
168. Imperial mari. Flute milk pitcher.
169. Imperial mari. Flute & Cane small water pitcher. Scarce.
170. Imperial purple Flute creamer & Sugar
171. IMPERIAL 14" ELEC. PURPLE MORNING GLORY FLARED FUNERAL VASE.
172. IMPERIAL 12" TEAL MORNING GLORY FUNERAL VASE. VERY RARE COLOR.
173. IMPERIAL ELEC. PURPLE OCTAGON WATER PITCHER. VERY RARE. ALSO WILL BE SELLING 5 TUMBLERS CHOICE.
- 173A IMPERIAL ELEC. PURPLE OCTAGON MILK PITCHER. ANOTHER RARE AND BEAUTIFUL ITEM. TINY NICK ON BASE.
174. Imperial smoke Grape wine decanter. Very scarce.
175. Imperial mari. Pair of Six-sided candlesticks. Rare.
176. Imperial smoke Fashion creamer & sugar.
177. IMPERIAL KILLER ELEC. PURPLE WINDMILL WATER PITCHER. VERY RARE, HAS TREMENDOUS ELEC. IRID. ALSO, SELLING 3 MATCHING TUMBLERS. CHOICE.
178. Imperial mari. Octagon jelly compote.
179. IMPERIAL GRAPE ELEC. PURPLE WATER CARAFE. SUPER!
180. IMPERIAL GRAPE ELEC. PURPLE WINE DECANTER. ANOTHER BEAUTY.
181. (6) Imperial Grape elec. purple wines. 6X money.
182. IMPERIAL 6" RED FISHNET & ROSE VASE. KILLER BLUE IRID. RARE!
183. IMPERIAL 6" RED FISHNET & GRAPE VASE. ALSO A RARE VASE.
184. N-WOOD 9" ELEC. BLUE PEACOCKS STIPPLED PLATE. BEAUTIFUL.
185. N-WOOD 9" PURPLE PEACOCKS PLATE W/BEAUTIFUL ELECT. MULTICOLOR IRID.
186. N-WOOD 9" GREEN PEACOCKS PLATE. VERY RARE. HAS NICE COLOR!
187. N-WOOD 9" IB PEACOCKS PLATE. VERY SCARCE.
188. N-WOOD 9" IG PEACOCKS PLATE. NICE!
189. N-WOOD 9" FROSTY WHITE PEACOCKS PLATE. GETTING HARD TO FIND.
190. N-WOOD 8 1/2" ELEC. PURPLE PEACOCKS PCE BOWL. BEAUTIFUL!
191. N-WOOD 8 1/2" LAVENDER /LIGHT AMY. PEACOCKS PCE BOWL. NICE MULTICOLOR IRID.
192. N-WOOD 8 1/2" AO PEACOCKS RUFFLED BOWL. PRETTY!
193. N-wood 8 1/2" mari. Peacocks ruffled bowl.

Visit our website! [www.jimwrodauction.com](http://www.jimwrodauction.com)



*Carnival Glass Collection Saturday May 28<sup>th</sup> 2005 at 9:45 AM*



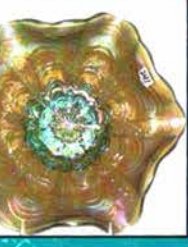
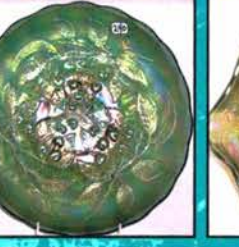
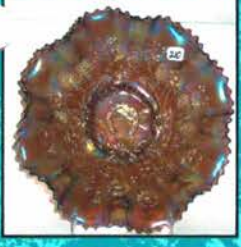
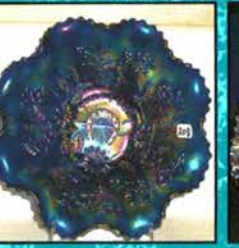
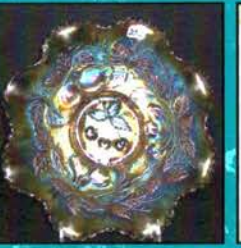
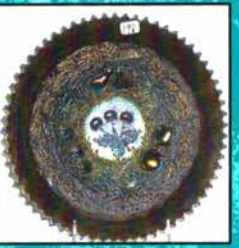
Visit our website! [www.jimwrodaauction.com](http://www.jimwrodaauction.com)

## *Carnival Glass Collection Saturday May 28<sup>th</sup> 2005 at 9:45 AM*

- \_\_\_ 194. N-WOOD 9" PURPLE STRAWBERRY STIPPLED PLATE. RARE.
- \_\_\_ 195. N-wood 9" green Strawberry plate.
- \_\_\_ 196. N-WOOD 8 1/2" MARI. STRAWBERRY STIPPLED RUFFLED BOWL.
- \_\_\_ 197. N-WOOD 8 1/2" MARI. STRAWBERRY STIPPLED RUFFLED BOWL. HAS THIN COLOR BASE.
- \_\_\_ 198. N-WOOD 9" BLUE STIPPLED THREE FRUITS PLATE. NICE.
- \_\_\_ 199. N-wood 9" mari. Stippled Three Fruits PCE bowl. Very scarce.
- \_\_\_ 200. N-wood 9" mari. Stippled Three Fruits ruffled bowl.
- \_\_\_ 201. N-wood 8 1/2" mari. Three Fruits ruffled bowl w/BW back. Heat check in base.
- \_\_\_ 202. N-WOOD 8 1/2" PASTEL SMOKE THREE FRUITS RUFFLED BOWL. PLAIN BACK. SUPER!!!
- \_\_\_ 203. N-WOOD 8 1/2" HOREHOUND THREE FRUITS RUFFLED BOWL W/PLAIN BACK. VERY SCARCE.
- \_\_\_ 204. N-wood 5" mari. Fruits & Flowers berry bowl.
- \_\_\_ 205. N-WOOD 6 1/2" IB TREE TRUNK SQUATTY VASE. OUT STANDING PASTEL IRID.
- \_\_\_ 206. N-wood 8" blue Drapery Vt. vase. Scarce.
- \_\_\_ 207. N-WOOD 8 1/2" EMERALD GREEN/GREE GOOD LUCK RUFFLED BOWL. WHAT A BEAUTY!
- \_\_\_ 208. N-WOOD 8 1/2" ELECT. BLUE GOOD LUCK RUFFLED BOWL. ALWAYS A HIT.
- \_\_\_ 209. N-wood 8 1/2" purple Good Luck ruffled bowl.
- \_\_\_ 210. N-wood 8 1/2" light amy./lavender Good Luck ruffled bowl w/beautiful color!
- \_\_\_ 211. N-wood 8 1/2" elec. purple. Good Luck ruffled bowl. Hot!!!
- \_\_\_ 212. N-wood 8 1/2" mari. Good Luck ruf bowl-BW back.
- \_\_\_ 213. N-wood 8 1/2" mari. Good Luck PCE bowl. Nice.
- \_\_\_ 214. N-WOOD GREEN WIDE PANEL EPERGNE. VERY SCARCE. COUPLE NICKS ON INSERT. NO BIG DEAL!!! PRETTY!
- \_\_\_ 215. N-wood mari. Round Bushel Basket.
- \_\_\_ 216. (6) N-WOOD MARI. G & C SHOT GLASSES. CHOICE. VERY SCARCE.
- \_\_\_ 217. N-wood mari. Leaf & Beads rosebowl.
- \_\_\_ 218. N-wood crystal Oriental Poppy 7 pc. water set w/gold trim.
- \_\_\_ 219. N-wood crystal Memphis 8 pc. fruit set. Advertising Shannon's Furniture Carpet & Stoves.
- \_\_\_ 220. N-wood crystal Memphis water pitcher and 3 tumblers.
- \_\_\_ 221. N-wood green G & C hat pin holder. Nice irid.
- \_\_\_ 222. N-WOOD PURPLE LARGE G & C COVERED COMPOTE. BEAUTIFUL ELECT. IRID.
- \_\_\_ 223. N-WOOD MARI. LARGE G & C COVERED COMPOTE. SCARCE.
- \_\_\_ 224. N-WOOD GREEN WISHBONE EPERGNE. VERY SCARCE.
- \_\_\_ 225. N-WOOD PURPLE WISHBONE EPERGNE. VERY SCARCE.
- \_\_\_ 226. N-WOOD MARI. WISHBONE EPERGNE. SCARCE.
- \_\_\_ 227. N-wood 8" mari. Wishbone footed bowl.
- \_\_\_ 228. N-wood 8" green Sunflower spatula footed bowl.
- \_\_\_ 229. N-wood mari. Springtime butter dish. Rare!
- \_\_\_ 230. N-wood 9" purple Thin Rib vase.
- \_\_\_ 231. N-wood 10" elec. blue Four Pillars vase. Very scarce. Feet look ok.
- \_\_\_ 232. M-burg 9" mari. Fleur-de-lys tri-corner CRE dome footed bowl. Has couple of typical nicks on toes. Radium.
- \_\_\_ 233. M-burg 9" mari. Holly Whirl ruffled bowl.
- \_\_\_ 234. M-burg 8" purple Peacock at Urn ICS bowl. Bee w/beads. Radium.
- \_\_\_ 235. M-burg 9" mari. Fleur-de-lys dome footed ICS bowl. Again, a couple nicks on toes.
- \_\_\_ 236. M-burg 10" green Blackberry Wreath 3/1 edge bowl. Radium.
- \_\_\_ 237. M-burg 9" mari. Zig Zag CRE ruffled bowl. Radium w/beautiful irid.
- \_\_\_ 238. M-BURG 10" BLUE BLACKBERRY WREATH RUFFLED BOWL.
- \_\_\_ 239. M-burg 10" green Nesting Swans ruffled bowl.
- \_\_\_ 240. M-BURG 10" TEAL HANGING CHERRIES ICS BOWL. VERY RARE.
- \_\_\_ 241. M-BURG 10" TEAL ROSALIND RUFFLED BOWL. RARE!
- \_\_\_ 242. M-BURG CRYSTAL OHIO STAR 7 PC. CIDER SET W/TANKARD PITCHER. RARE!
- \_\_\_ 243. M-burg crystal Hobstar & Feather frosted jelly compote.
- \_\_\_ 244. M-burg crystal Hobstar & Feather frosted water pitcher.
- \_\_\_ 245. M-BURG 10" GREEN TULIP SCROLL PULLED VASE. VERY SCARCE.
- \_\_\_ 246. M-BURG 10" GREEN BULLS EYE & LOOP PULLED VASE.
- \_\_\_ 247. M-BURG 9" AMY. TULIP SCROLL VASE. RADIUM.
- \_\_\_ 248. M-BURG 10" MARI. TULIP SCROLL VASE. RADIUM.
- \_\_\_ 249. M-BURG 11" MARI. BULLS EYE & LOOP PULLED VASE.
- \_\_\_ 250. N-wood crystal Memphis punch top.
- \_\_\_ 251. N-wood crystal Memphis nappy - Cahn furniture.
- \_\_\_ 252. Fenton crystal G & C 7 pc. punch set. Scarce.
- \_\_\_ 253. M-burg crystal Hobstar & Feather banana boat.
- \_\_\_ 254. M-burg crystal Hobstar & Feather sherbet
- \_\_\_ 255. M-burg crystal Hobstar & Feather relish
- \_\_\_ 256. M-burg crystal Heart & Feather water pitcher.
- \_\_\_ 257. M-burg crystal Palm Leaf butter dish.
- \_\_\_ 258. M-burg crystal Palm Leaf 9" tri-corner bowl
- \_\_\_ 259. M-burg crystal Ohio Star cider pitcher, tankard size.
- \_\_\_ 260. M-burg crystal Ohio Star vase.
- \_\_\_ 261. M-burg crystal Ohio Star carafe
- \_\_\_ 262. M-burg crystal Ohio Star toothpick.
- \_\_\_ 263. (2) M-burg crystal Ohio Star juice glasses.
- \_\_\_ 264. M-burg crystal Ohio Star cruet
- \_\_\_ 265. M-burg crystal Ohio Star 2-creamers, 1-spooner. One lot.
- \_\_\_ 266. M-burg 6" crystal Ohio Star compote.
- \_\_\_ 267. M-burg crystal Ohio Star butter dish.
- \_\_\_ 268. M-burg crystal Potpourri compote
- \_\_\_ 269. M-burg crystal Potpourri stemmed cake plate.
- \_\_\_ 270. M-burg crystal Potpourri salver compote.
- \_\_\_ 271. M-burg crystal Country Kitchen ICS bowl.
- \_\_\_ 272. Cambridge crystal Near Cut Inverted Feather handled basket.
- \_\_\_ 273. Imperial crystal Chateline water pitcher. Scarce
- \_\_\_ 274. Imperial crystal Grape 7 pc. water set.
- \_\_\_ 274a M-burg crystal Potpourri compote salver.
- \_\_\_ 274b Crystal multi star 10" bowl
- \_\_\_ 274c West. 8" BO Dogwood ruffled bowl.
- \_\_\_ 275. N-wood 9" purple Heart & Flower plate. Goldfish irid. Scarce.
- \_\_\_ 276. N-wood 8 1/2" blue Embroidered Mums ruffled bowl. Scarce.
- \_\_\_ 277. N-wood 8 1/2" AO Three Fruits stippled ruffled bowl w/collar base. Scarce.
- \_\_\_ 278. N-wood 9 1/2" purple Wishbone ruffled bowl. Scarce size.
- \_\_\_ 279. N-wood purple G & C hat pin holder.
- \_\_\_ 280. N-wood dark purple 8-sided Bushel Basket. Chip on foot

*Visit our website! [www.jimwrodauction.com](http://www.jimwrodauction.com)*

*Carnival Glass Collection Saturday May 28<sup>th</sup> 2005 at 9:45 AM*



# 188 PL	# 197 FLORAL	# 198 FLORAL	# 199 FLORAL	# 200 FLORAL	# 201 FLORAL	# 202 FLORAL
# 203 FLORAL	# 204 FLORAL	# 205 FLORAL	# 206 FLORAL	# 207 FLORAL	# 208 FLORAL	# 209 FLORAL
# 210 FLORAL	# 211 FLORAL	# 212 FLORAL	# 213 FLORAL	# 214 FLORAL	# 215 FLORAL	# 216 FLORAL
# 217 FLORAL	# 218 FLORAL	# 219 FLORAL	# 220 FLORAL	# 221 FLORAL	# 222 FLORAL	# 223 FLORAL
# 224 FLORAL	# 225 FLORAL	# 226 FLORAL	# 227 FLORAL	# 228 FLORAL	# 229 FLORAL	# 230 FLORAL
# 231 FLORAL	# 232 FLORAL	# 233 FLORAL	# 234 FLORAL	# 235 FLORAL	# 236 FLORAL	# 237 FLORAL
# 238 FLORAL	# 239 FLORAL	# 240 FLORAL	# 241 FLORAL	# 242 FLORAL	# 243 FLORAL	# 244 FLORAL
# 245 FLORAL	# 246 FLORAL	# 247 FLORAL	# 248 FLORAL	# 249 FLORAL	# 250 FLORAL	# 251 FLORAL



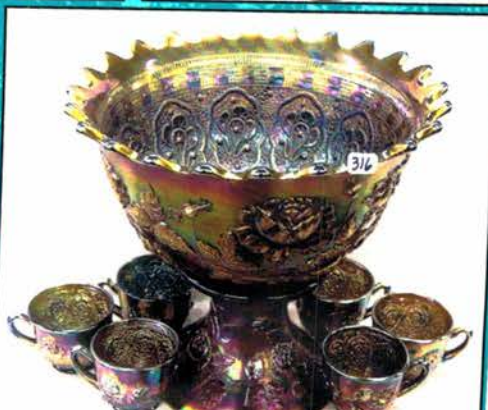
Visit our website! [www.jimwrodaauction.com](http://www.jimwrodaauction.com)

## *Carnival Glass Collection Saturday May 28<sup>th</sup> 2005 at 9:45 AM*

- \_\_\_ 281. N-wood IB Drapery candy dish, Tiny nick on toe
- \_\_\_ 282. N-wood mari. Round Bushel Basket. Pretty.
- \_\_\_ 283. Fenton 7" red G & C ruffled bowl. Silvery.
- \_\_\_ 284. Fenton pale green Horse Head JIP footed bowl. Really odd color. Nice pressing.
- \_\_\_ 285. FENTON BLUE ORANGE TREE HAT PIN HOLDER W/GOOD FEET. NICE.
- \_\_\_ 286. Fenton 5" red Blackberry Spray OE basket. Scarce.
- \_\_\_ 287. Fenton 6" green Persian Medallion plate. Tough size.
- \_\_\_ 288. Fenton 6" green Pinecone plate.
- \_\_\_ 289. Fenton mari. Kittens 4-sided plate.
- \_\_\_ 290. Fenton blue Sailboats wine glass
- \_\_\_ 291. Imperial 6" purple Morning Glory vase. Scarce color.
- \_\_\_ 292. Imperial 8" elect. Purple Ripple vase. Nice.
- \_\_\_ 293. N-wood green Singing Birds mug. Tough color!
- \_\_\_ 294. N-wood green G & C candlestick.
- \_\_\_ 295. Imperial mari. Sugar bowl
- \_\_\_ 296. Stretch white 6" compote.
- \_\_\_ 297. Stretch IG 1/2 lb. covered candy jar
- \_\_\_ 298. Jain 5" mari. Hand vase.
- \_\_\_ 299. (3) Carnival beaded purses
- \_\_\_ 300. (30) CARNIVAL GLASS BUTTONS. SIX IN A ROW. SELLING CHOICE ROWS.
- \_\_\_ 301. FENTON 7" BLUE ILLINOIS SOLDIERS & SAILORS PLATE. EXCELLENT DETAIL.
- \_\_\_ 302. N-WOOD PURPLE MEMPHIS 7 PC. FRUIT SET.
- \_\_\_ 303. N-WOOD MARI. DAISY & DRAPE FOOTED VASE. SCARCE.
- \_\_\_ 304. N-wood blue Drapery candy dish. Chip on one foot.
- \_\_\_ 305. N-wood 8" IG Drapery vase. Nick on one toe.
- \_\_\_ 306. N-wood 8" purple Wishbone footed plate.
- \_\_\_ 307. N-wood 8 1/2" green Good Luck ruffled bowl. Nice.
- \_\_\_ 308. N-wood 10" purple Peacock at the Urn MIC bowl. Pretty.
- \_\_\_ 309. Fenton powder blue Peacock at Urn goblet shaped compote.
- \_\_\_ 310. Imperial 9" BLUE Open Rose deep round bowl. Scarce color.
- \_\_\_ 311. M-BURG PURPLE 12" BULLS EYE & LOOP VASE. RADIUM.
- \_\_\_ 312. Imperial mari. Crab Claw 6 pc. water set.
- \_\_\_ 313. West. mari. Daisy Squares compote w/banana boat shaped top.
- \_\_\_ 314. Mari. Cockatoo wall pocket.
- \_\_\_ 315. VICTORIAN AMBERINA 4-LILY EPERGNE & PEWTER BASE. BEAUTIFUL!
- \_\_\_ 316. FENTON BLUE WREATH OF ROSES 8 PC. PUNCH SET W/PERSIAN MEDALLION INTERIOR. GOOD LOOKIN' SET.
- \_\_\_ 317. FENTON PURPLE WREATH OF ROSES 8 PC. PUNCH SET W/PERSIAN MEDALLION INTERIOR. SCARCE.
- \_\_\_ 318. FENTON GREEN WREATH OF ROSES PUNCH BOWL & BASE W/PERSIAN MEDALLION INTERIOR. ANOTHER NICE SET.
- \_\_\_ 319. FENTON MARI. WREATH OF ROSE 8 PC. PUNCH SET W/PERSIAN MEDALLION INTERIOR.
- \_\_\_ 320. Fenton pink Stretch Stippled Rays 5" stemmed compote.
- \_\_\_ 321. Fenton celeste blue Stretch Stippled Rays 5" stemmed compote
- \_\_\_ 322. Fenton vaseline Stretch Stippled Rays 5" stemmed compote
- \_\_\_ 323. Fenton IG Stretch Stippled Rays 5" stemmed compote
- \_\_\_ 324. Fenton IB Rose Spray JIP compote
- \_\_\_ 325. Fenton IG Rose Spray JIP compote
- \_\_\_ 326. Fenton clambroth Rose Spray JIP compote
- \_\_\_ 327. Fenton white Rose Spray JIP compote
- \_\_\_ 328. Fenton white opal Rose Spray JIP compote. Not Carnival.
- \_\_\_ 329. Fenton celeste blue Rose Spray sherbet.
- \_\_\_ 330. U.S. Glass honey amber Cosmos & Can 4 pc. table set. Very Rare.
- \_\_\_ 331. (3) U.S. Glass honey amber tumblers. Choice.
- \_\_\_ 332. Pair of mari. Horn of Plenty vases.
- \_\_\_ 333. Dugan 3" mari. Circle Scroll tri-corner hat.
- \_\_\_ 334. Blue Stretch 7" twisted vase.
- \_\_\_ 335. Imperial 7" mari. Propeller vase.
- \_\_\_ 336. Dugan 7" mari. Pinch Swirl vase w/round top.
- \_\_\_ 337. Fenton 9" mari. Fine Rib vase
- \_\_\_ 338. Fenton mari. Iris butter milk goblet
- \_\_\_ 339. Fenton mari. Persian Medallion hair receiver.
- \_\_\_ 340. Fenton 6" mari. Lotus & Thistle ruffled bowl
- \_\_\_ 341. Fenton mari. Orange Tree loving cup
- \_\_\_ 342. Fenton mari. Wreath of Roses rosebowl.
- \_\_\_ 343. Fenton mari. Kittens ruffled bowl
- \_\_\_ 344. Fenton mari. Kittens four sides up plate.
- \_\_\_ 345. Fenton 6" mari. Lions ICS bowl.
- \_\_\_ 346. Fenton mari. Horse Head Medallion JIP footed bowl.
- \_\_\_ 347. Fenton mari. 5" Panther footed berry bowl.
- \_\_\_ 348. Fenton 5" vaseline Two Flowers footed berry bowl.
- \_\_\_ 349. Fenton mari. 5" Leaf Tears berry bowl.
- \_\_\_ 350. Fenton 6" mari. Peacock Tail ruffled bowl.
- \_\_\_ 351. Fenton green Oriental Poppy tumbler
- \_\_\_ 352. (9) Dugan pastel swans master salts. Choice. Purple, clear opal, lime green, pink, 2-celeste blue, clear, frosted, teal
- \_\_\_ 353. European 12" mari. Stein w/pewter top
- \_\_\_ 354. Jain 9" fish vase frosted.
- \_\_\_ 355. Vaseline Stretch trumpet vase.
- \_\_\_ 356. Pink Stretch trumpet vase.
- \_\_\_ 357. Imperial mari. Hobstar Band spooner.
- \_\_\_ 358. Dugan mari. Grape Delight nut bowl
- \_\_\_ 359. N-wood mari. Acorn Burrs sugar.
- \_\_\_ 360. Imperial mari. Covered sugar
- \_\_\_ 361. Australian swan mari. 5" bowl.
- \_\_\_ 362. Fenton mari. Orange Tree creamer & spooner.
- \_\_\_ 363. Fenton mari. 10" Two Flowers footed ruffled bowl.
- \_\_\_ 364. Fenton 9" mari. Feathered Serpentine ICS bowl.
- \_\_\_ 365. Fenton 8" mari. Peacock & Grape footed ruffled bowl.
- \_\_\_ 366. Choice of 6 mari. Punch cups: Fashion, Memphis, Hobstar & Feather, Imperial Grape, (2)-474
- \_\_\_ 367. Dugan 8" purple Flower & Frame dome footed bowl. Nice elect. Color.
- \_\_\_ 368. M-burg 6" green Holly Sprig 2-handled bon bon. Radium.
- \_\_\_ 369. FENTON AQUA/SAPPHIRE ORANGE TREE MUG
- \_\_\_ 370. Fenton 5" green Open Edge ruffled basket.
- \_\_\_ 371. Fenton 5" blue Open Edge JIP basket
- \_\_\_ 372. Fenton 5" cobalt blue Open Edge 2-sides up basket.
- \_\_\_ 373. Fenton 5" purple Open Edge ruffled basket.

*Visit our website! [www.jimwrodaauction.com](http://www.jimwrodaauction.com)*

Carnival Glass Collection Saturday May 28<sup>th</sup> 2005 at 9:45 AM



Visit our website! [www.jimwrodaauction.com](http://www.jimwrodaauction.com)

## RS Prussia Collection Saturday May 28th 2005 at 10:00AM

- |  |  |
|--|--|
| <p>1. UM RSP 10 1/2" floral bowl. Mold 339.</p> <p>2. RSP 10 1/2" Masted Schooner bowl. Mold 207.</p> <p>3. RSG Cabbage shaped mayonnaise.</p> <p>4. RS Script mark 5" Flower formed covered box. Floral.</p> <p>5. UM RSP 10" satin finish Lily of the Valley bowl.</p> <p>6. RSG 2-handled cracker jar w/rose décor.</p> <p>7. RVG chocolate set w/6 cup &amp; saucers, Dogwood pattern. Very nice.</p> <p>8. RSP Cottage &amp; Mill Scene ft'd creamer &amp; sug.</p> <p>9. UM RSP 8" Lebrun w/out hat bowl. Gold sides w/clematis. Sawtooth mold.</p> <p>10. UM RSP Lily mold covered match box.</p> <p>11. UM RSP covered match box w/Snowballs décor.</p> <p>12. UM RSP round floral covered pin box. Mold 207</p> <p>13. UM RSP floral hair receiver. Mold 802. Small nick on edge of bottom.</p> <p>14. RSP 10 1/2" Icicle mold Snow Birds bowl. Some wear to pattern. Rare.</p> <p>15. UM RSP 6" Sawtooth Mill Scene footed bowl.</p> <p>16. RSP 11" satin finish Swans bowl. Mold 202.</p> <p>17. RSP 10 1/2" satin finish Iris mold bowl w/magnolia décor. Very nice. Wheelock mark.</p> <p>18. RSP 13" Icicle mold celery w/Barnyard scene. Wheelock mark.</p> <p>19. RSP 8" satin finish Swans w/Terrace plate.</p> <p>20. UM RSP 8" Lily mold Lebrun w/ hat tiffany finish plate. A bit worn but nice.</p> <p>21. UM RSP 10 1/2" bowl, Diana the Huntress w/gold rim. Beautiful bowl.</p> <p>22. RSG 11" Cottage Scene bowl.</p> <p>23. UM RSP 10" cobalt blue bowl w/floral décor. Very nice. Unusual mold.</p> <p>24. RSG 10" Scalloped bowl. Lady w/sheep.</p> <p>25. RS Germany Steeple mark 11" floral dresser tray.</p> <p>26. RSP Fleur-de-lis mold dresser tray. Floral. Wheelock mark. Chip on one point.</p> <p>27. RSP 10" Cabbage mold floral square bowl.</p> <p>28. E.S. Germany portrait 10" chocolate pot. Nice.</p> <p>29. RSP 10" Melon Boy cylinder vase w/8 decorated jewels. Super piece.</p> <p>30. RVG 7" Peasant Girl vase.</p> <p>31. RSP Icicle mold 13" celery, Man in the Mountain décor.</p> <p>32. UM RSP 13" Lily mold celery dish w/Diana the Huntress. Nice dark colors.</p> <p>33. UM RSP Iris variation floral chocolate pot.</p> <p>34. Hidden Image floral covered 5" dresser box.</p> <p>35. Hidden Image floral single chamber stick.</p> <p>36. Hidden Image floral pin tray.</p> <p>37. Germany Saxe Altenberg Poppy mold floral 5" covered pin box.</p> <p>38. UM RSP mold OM72 covered floral ink well. Very nice.</p> <p>39. RSP 4 piece condiment set. Floral.</p> <p>40. UM RSP Iris variation gravy boat w/attached under plate.</p> <p>41. (2) E.S. Germany floral tea strainers.</p> <p>42. Double Hidden Image 11" floral cake plate. Small touch up on back.</p> <p>43. RSP 10" satin finish Apple Blossoms bowl.</p> <p>44. RSP 7 pc. floral berry set. Mold 91. One berry bowl cracked.</p> | <p>45. RSP 10" Point &amp; Clover Melon Boy scenic cake plate.</p> <p>46. UM RSP 8" portrait vase. Nice.</p> <p>47. R.S. Suhl 10 1/2" Gleaners 2-handled vase. Rare!</p> <p>48. RSP 12 1/2" Cottage Scene double handled vase. Mold 901.</p> <p>49. RVG 10" flask shaped tiffany finish vase w/Diana the Huntress and Reclining Flora. Very nice!</p> <p>50. RVG 12" handled tiffany finish ewer w/Diana the Huntress &amp; Reclining Flora scene. RVG mold 17.</p> <p>51. RVG 8" tiffany finish handled vase w/Reclining Flora. RVG mold 34.</p> <p>52. RVG 8" cobalt blue handled vase w/Reclining Flora &amp; Diana the Huntress. RVG mold 34</p> <p>53. RSP 13" Barnyard scene vase w/Swallows (Turkeys, Ducks, &amp; Pheasants). Beautiful vase.</p> <p>54. E.S. Germany 11" 2-handled vase, Lady w/Peacock.</p> <p>55. RVG 9" cylinder vase w/Diana the Huntress &amp; Reclining Flora. RVG mold 19.</p> <p>56. Outstanding RSP 10 1/2" Icicle mold Snow Bird bowl w/Tapestry effect. Very cool bowl. Looks like it's snowing. RARE RARE RARE!!!</p> <p>57. RSP 10 1/2" Barnyard scene bowl. Mold 32B</p> <p>58. RSP 10 1/2" Butterfly mold Barnyard scene bowl (Turkeys, Ducks &amp; Swallows) décor. Super!</p> <p>59. RSP 10 1/2" satin finish Snow Birds bowl. Rare.</p> <p>60. RSP 10 1/2" Icicle mold Barnyard scene bowl. Small touch up at 5:00 o'clock.</p> <p>61. UM RSP 10" mold 343 bowl, Reclining Flora décor. Medallions of cherubs.</p> <p>62. Marked Gainsborough 10" bowl. Lady w/Dog décor. Nice luster finish.</p> <p>63. UM RSP 10 1/2", mold 2, tiffany domes, Lady w/Fan décor. Very scarce.</p> <p>64. Same as 63, Lady Watering Flowers. Scarce.</p> <p>65. Same as 63, Lady w/Dog. Steeple marked.</p> <p>66. Same as 63, Lady Feeding Chickens. The last bowl of this great set of 4. (Lot 63-66)</p> <p>67. E.S. Prussia 5" solid gold reticulated classical portrait pin tray</p> <p>68. E.S. Germany 6" gold butterfly shape pin tray. Lady w/Doves w/heavy enameling.</p> <p>69. E.S. Germany 5" Queen Louise handled bowl</p> <p>70. E.S. Germany 7" Lady w/Peacocks pin tray. Solid gold w/beaded enameling</p> <p>71. E.S. Germany 5" Lady w/Peacock tiffany finish and gold covered box w/beaded enameling.</p> <p>72. E.S. Germany 6" Lady w/Peacock tiffany finish and gold ash tray w/beaded enameling.</p> <p>73. RSP 13" Icicle mold Barnyard tankard. Very rare!</p> <p>74. RSP Icicle mold Barnyard scene biscuit jar. Finial has been replaced but nice.</p> <p>75. RSP Icicle mold 3-piece Barnyard scene tea set. Super!</p> <p>76. RSP 10 1/2" Icicle mold Barnyard scene cake plate. Wheelock mark.</p> <p>77. RSP 8" Icicle mold Barnyard plate.</p> <p>78. RSP 3 piece Castle scene tea set. Mold 576.</p> <p>79. RSP 9" Sawtooth mold Castle mold relish</p> |
|--|--|

Visit our website! [www.jimwrodauction.com](http://www.jimwrodauction.com)