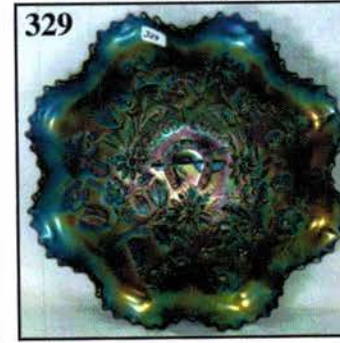
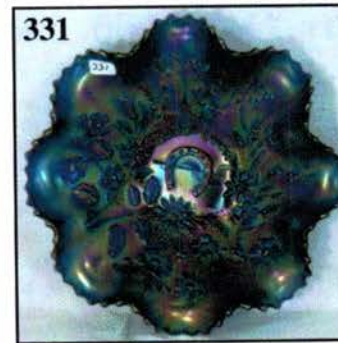
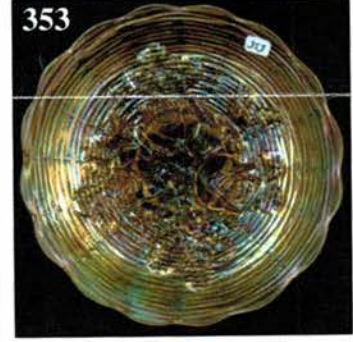
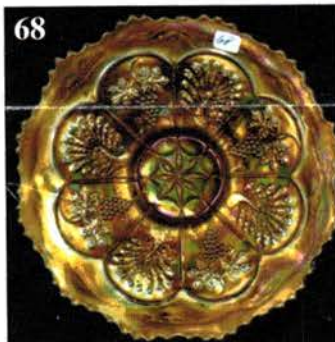
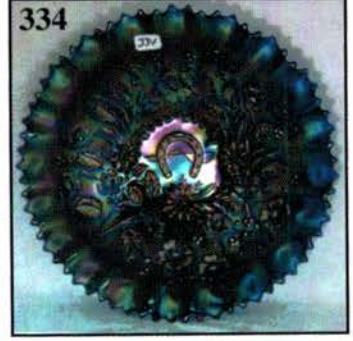
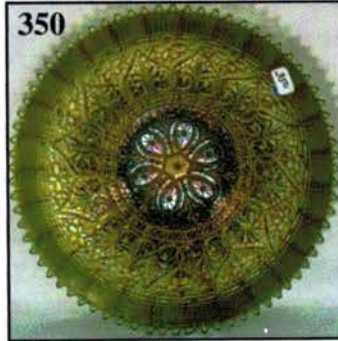


CARNIVAL GLASS AND MORE

Saturday, May 21, 2005 9:00 a.m. C.D.T.

SAWKINS AND MILLS: EASTERN COLLECTION



Held By the Mickey Reichel Antique & Auction L.C.

Office: 660-882-5292 • Home: 660-882-5283

NEW WEB SITE: www.AWK-SHN.com

E-mail: mreichel@AWK-SHN.com

Held Inside the Mickey Reichel Auction Center

1 Mile North of I-70 on Hwy. 5, Exit 101, Boonville, Missouri • 20 Miles West of Columbia, MO on I-70



Preview Friday 12 p.m. - 5 p.m. and 7:30 a.m. - 9:00 a.m. Day of Auction



TERMS: Cash or Good Check, VISA and MasterCard accepted.

3% Clerking Fee on all purchases except for payment of cash or check. Proper I.D. required.

WEB SITE: www.AWK-SHN.com

ABSENTEE BID POLICY:

WRITE IN BIDS: If you are unable to attend the auction, we will be happy to accept absentee bids which must be received by THURSDAY, MAY 19, 2005. Don't Delay. E-Mail: mreichel@AWK.SHN.com

FOR AUCTION PRICE RESULTS: Send \$3.00 and Large S.A.S.E. to 18350 Hunters Ridge Ct., Boonville, MO 65233-2971

PLEASE NOTE: There is a **\$5 handling charge for each successful bid which will be added to the selling price** for all write-in bids. This is in addition to the cost of postage, insurance and packing. Your write-in bid will be entered just as if you are present and bidding. **Successful bidders will be notified in 1 to 3 days by the auctioneer (so be sure to include your phone number).** Direct mail bids to Auctioneer Mickey Reichel, 18350 Hunters Ridge Ct., Boonville, MO 65233-2971. Terms: Cash or Check accepted with proper I.D. and Social Security Number and References. Announcements made day of the auction supercede all printed material. Not Responsible for Accidents or Sold Items.

No return on any items once they leave the Auction Center (No Exceptions).****

Call for additional information: 660-882-5292 days or 660-882-5283 evenings before 9:00 p.m.

FAX: 660-882-5292 (evening hours start FAX transmission after beep)

MAIL BIDS: Items are bid on in perfect condition with average or above iridescence OR as listed in the brochures. Bids will not be carried out when damage on an item has been found during the auction.

PEOPLE PRESENT AT AUCTION ARE RESPONSIBLE FOR FINDING ANY PINHEADS, WEAR, SPOTTINESS, MANUFACTURER'S DEFECTS OR ANY OTHER MINOR FLAWS, ETC. *****

NOTE: Read each line, as we have accentuated the type of no particular piece, all are special.

Make Reservations EARLY at one of these local motels:

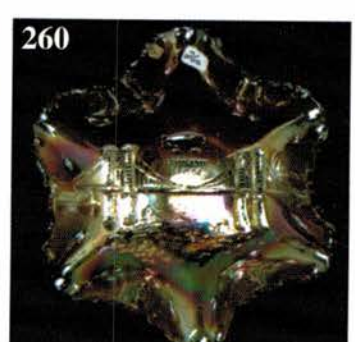
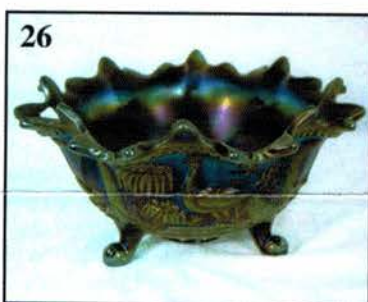
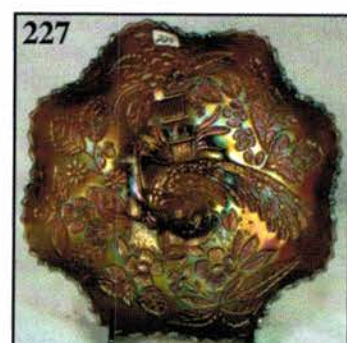
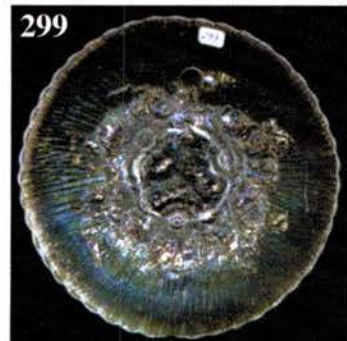
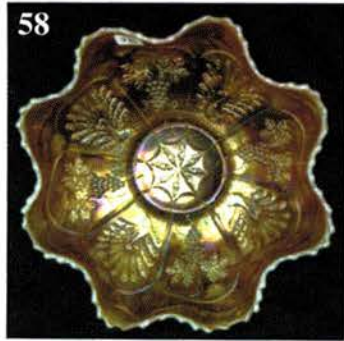
Days Inn: 660-882-8624 • Comfort Inn: 660-882-5317 • Super 8: 660-882-2900 • Holiday Inn: 660-882-6882

Auction Consists of Rarity, Great Irid. and Variety

THANK YOU FOR ATTENDING TODAY

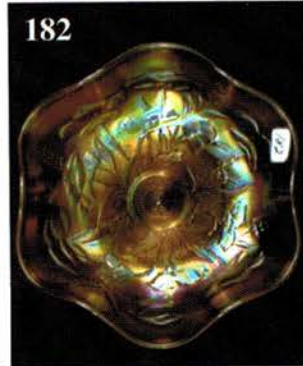
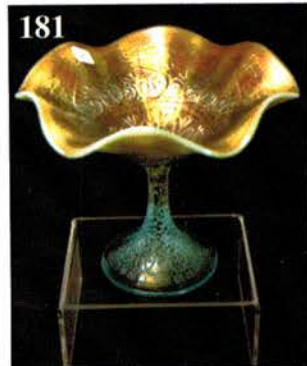
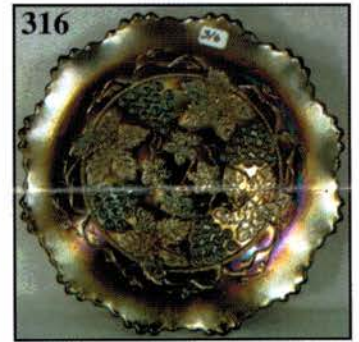
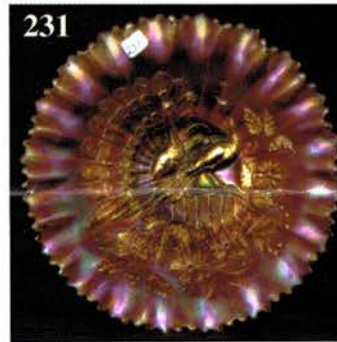
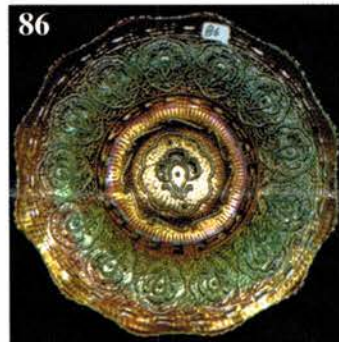
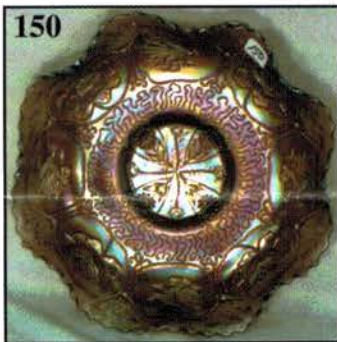
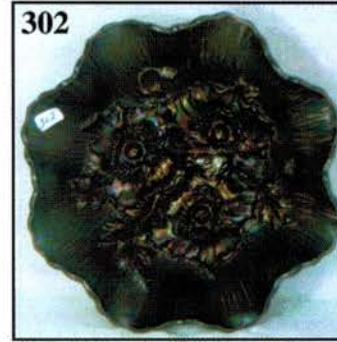
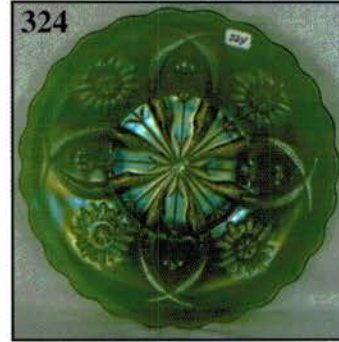
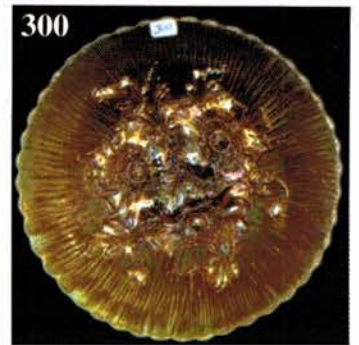
1. Dark M-Fenton 10" Rustic vase
2. **G-Imp 8" squatty Ripple Vase-2 7/8" base, 4 3/4" opening**
3. G-Fenton 6", low ICS Vintage (Grape) bowl
4. **B-Fenton 10 1/4" Persian Medallion ruffled bowl-Extra nice**
5. B-Fenton 5 3/4", ICS Persian Medallion bowl
6. **Vas-Fenton Peacock at Urn ruffled compote-Very nice**
7. P-N Daisy and Plume ruffled compote-Plain interior
8. **Scarce B-N Hearts and Flowers ruffled compote-Multi electric**
9. Rich M-Fenton 7" Leaf Chain ruffled bowl
10. **A-N Fine Cut & Roses Vt. rosebowl-No ring on bottom, very scarce**
11. P-Imp 7 1/2" Scroll Embossed bowl with plain interior- Outstanding electric with green haloes!
12. **Scarce Amber-Imp Open Rose low ICS bowl-Flaws on roses**
13. PO-Dugan Ski Star 11" ruffled bowl-Compass exterior
14. **Electric P-Dugan 7 1/4", ten ruffle Holly and Berry bowl**
15. PO-Dugan 10 3/4" Petal and Fan eight ruffle bowl-Scarce pattern, has Farmyard bowl shape
16. **BO-Westmoreland Daisy Wreath 8 1/2" ruffled bowl-Very undervalued color and pattern**
17. M-Fenton Dragon and Lotus ICS bowl
18. **B-Fenton Dragon and Lotus 8 3/4", ruffled, collar base bowl-Great electric irid.**
19. G-Fenton Thistle 8 1/2", 3 in 1 edge bowl-Neat shape
20. **W-Fenton Leaf Chain 7" ruffled bowl-Nice pastels**
21. Rich M-Dugan 8 1/4", six ruffle Pony bowl
22. **Multi Elec P-N Peacocks 9" plate-Rib exterior**
23. P-N Grape and Cable ruffled Whimsey hat from tumbler-Electric
24. **W-N Hearts and Flowers 8 1/2" ruffled bowl-Extra nice irid.**
25. P-N Wishbone footed, ruffled bowl-Beautifully iridized
26. **P-N Peacock At Fountain footed fruit bowl-Outstanding piece**

27. P-N Wild Strawberry 10" ruffled bowl-BW exterior, multi electric
28. **Rare B-Fenton Lattice and Grape Tankard Pitcher with 6 beautiful tumblers**
29. M-Imp Octagon 8" pitcher-Scarce and nice
30. **G-N Grape and Cable Water Pitcher-Exciting color**
31. M-Imp Crabclaw large Water Pitcher-Nifty pattern
32. **PO-Dugan Honeycomb rosebowl-Lots of opal**
33. M-Mlbg Hobnail rosebowl-Radium and nice
34. **B-Fenton Peacock at Urn 8" ICS bowl-Scarce shape**
35. M-Imp Zipper Loop 8" kerosene lamp-Mkd IG
36. **Clambroth (?) -N Three Fruits 9" plate-BW ext.**
37. A-Fenton Peacock Tail 5 1/4" round berry bowls--6 x \$
38. **Rich M-Imp Octagon four place table set-Complete**
39. Dark M-Fenton 9 1/2" Flute vase
40. **W-Dugan Lined Lattice 10" Vase-Scarce and nice**
41. Great M-Dugan Mary Ann 6 1/4" vase-Loaded with color
42. **M-Dugan Floral and Grape water pitcher**
43. Pearlized White-Cased glass Austrian rosebowl with metal flower holder
44. **P-Art glass 7 3/4" vase-Polished pontil-Looks like Imperial Freehand?**
45. M-Split Diamond Creamers-Choice A or B
46. **M-8" plate-Possibly English, oval thumbprint type pattern**
47. M-Imp Flute 5" round berry bowl
48. **B-Fenton Feathered Serpent 5" berry bowl-Large marie chip**
49. Yellow Amber-Fenton Blackberry Spray 6" ruffled hat-Base glows orange!
50. **Rare M-Sowerby Scroll Embossed Diving Dolphins 8" footed bowl-Radium finish**
51. G-Fenton 9" Leaf Chain ruffled bowl-Satin silver irid.
52. **Fantastic M-Fenton Peacock at Urn 9", 8 ruffle bowl**
53. Great G-Fenton Dragon and Lotus 9", ruffled, collar base bowl
54. **M-Fenton Dragon and Lotus 9", collar base bowl with unusual low, low ruffled shape**
55. M-Fenton Vintage Grape 9" bowl, again with very low ruffled shape-Must see
56. **Scarce A-Fenton Chrysanthemum/Windmill 8 3/4", ruffled collar base bowl-Very pretty**
57. M-Fenton Chrysanthemum/Windmill 8 3/4", ruffled collar base bowl
58. **PO-Fenton Peacock and Grape collar base, 9", 8 ruffle bowl-Super pretty example**
59. Unusual B-Fenton Scale Band/Stippled Rays 5 1/2" footed bowl-Could be Renninger!
60. **B-Fenton Holly 9 1/2" Plate-Electric beauty**
61. Dark M-Fenton Holly 9" ruffled bowl
62. **B-Fenton Holly 9" very low ICS bowl-Only 1 3/4" tall-possibly a flared plate?**
63. Brick Red-Fenton Grape and Cable 7 1/2" ruffled bowl-Nice one
64. **G-Fenton Ten Mums 9 1/4", 3 in 1 edge bowl-Pretty center**
65. Scarce A-Fenton 9 1/8" Ribbon Tie low 3 in 1 edge bowl/plate?
66. **M-Fenton Wild Blackberry 9 3/4", 8 ruffle bowl-Difficult to come by**
67. G-Fenton Orange Tree 9", 8 ruffle bowl-A great find
68. **Fabulous M-Fenton 9 3/8" Peacock and Grape flat plate-Bearded Berry exterior-WOW!**
69. G-N Grape and Cable 9" plate-BW exterior, stretchy irid.
70. **G-N Strawberry 9" plate-Unusual smooth exterior, very nice**
71. P-N PCE Strawberry bowl-BW exterior-Good color
72. **Emerald G-N Raspberry footed ruffled bowl-Daisy and Plume exterior, normal nicks on feet**
73. M-N Grape and Cable 9" plate-BW exterior-Always in demand
74. **G-N Grape and Cable Vt. 9" ruffled bowl-Unusual plain exterior and unusual olive tint, very pretty**
75. Superb M-N Nippon 8 3/4" ruffled bowl-Scarce BW exterior
76. **Pumpkin M-N Nippon PCE bowl-Rib exterior-Another great one**
77. Ice B-N Nippon PCE bowl-Rib exterior-Nice pastels
78. **Pastel M-N Greek Key ruffled bowl-Rib exterior-Unusually nice example**
79. P-N 8" Grape and Cable two sides up (card tray shape) plate-multi electric and unusual size
80. **P-N Raspberry gravy boat-Feet look good, extremely difficult to find this nice**
81. Red Amberina-Fenton 8" 2-row, open edge plate-Not iridized
82. **Great M-Imp 6 1/2" Morning Glory vase**
83. Yellow opaline custard-Fenton 7 1/2" Prayer Rug plate-Not iridized
84. **Radium M-Dugan Vineyard water pitcher-Best one I've seen!**
85. Lav-N Stippled Rays center/Smooth Rays sides ruffled bowl-Whimsied item
86. **Radium M-Fenton 9 1/4" Persian Medallion plate-Very rare and beautiful item**
87. B-Fenton 9 1/4" Persian Medallion plate-Unusual and lovely finish
88. **Crystal-Australian 4" single handled little nappy with intaglio Pansy design**
89. Crystal-Australian 4 1/2" round berry bowl with intaglio Pansy design-Pink tinted glass
90. **Honey Amber-Cosmos and Cane 4 3/4" round, stemmed compote-Very desirable**
91. BA-Australian Swan 5 1/4", 12 ruffle sauce bowl
92. **B-Singleton Bailey Whimsied 16" Hobnail swung vases-Limited production-Choice A or B**
93. Red-Fenton Fine Rib 9 1/4" vase-4" tulip top-Better color than most
94. **Elec P-Imp 7" Mini Morning Glory vase**
95. Pumpkin M-Imp 7 3/4" Mini Morning Glory vase
96. **Rare Smoke-Imp 5 3/4" Mini Morning Glory vase-4" flared opening, loaded with iridescence**
97. Rich M-Imp 5 1/2" Mini Morning Glory vase-4" opening
98. **Rich M-Imp 5" Mini Morning Glory vase-3 1/4" opening**
99. P-Imp 4 1/2" Mini Morning Glory vase-3 5/8" opening-Electric
100. **G-Imp 4 5/8" Mini Morning Glory vase-4" opening, nice pinks in throat**
101. Awesome Electric B-Fenton 18 3/4" Rustic plunger base Funeral vase-front height of 14"
102. **Electric Radium P-Imp 9 1/4" Ripple swung vase-4 3/4" opening**
103. Lime G-Imp Ripple 8 1/2" swung vase-Unusual color, glows a little
104. **Electric P-Imp 6" Ripple vase-Unheard of size and color, just the best!**
105. M-Imp Thin Rib and Drape 6" vase-4 1/8" opening
106. **P-Imp Beaded Bullseye 9" vase-5 3/4" flared opening, outstanding radium electric**
107. M-Imp Curled Rib JIP 7 1/2" tall vase
108. **P-Dugan 8 3/4" swung Twigs vase-Very different shape and size**
109. M-Dugan Golden Flute 10" vase-Colorful
110. **Electric B-N Thin Rib 10 3/4" vase**



- _____ 111. M-N squatty 6" Thin Rib Vt. vase-3 1/2" base, 4 1/2" opening
- _____ 112. **P-N squatty 6" Thin Rib vase-3 1/2" base, 5" opening--Rare size**
- _____ 113. PO-Dugan Wide Rib 5 3/4" vase-cuspidor shape top
- _____ 114. **P-Westmoreland Corinth 8 1/2" JIP vase**
- _____ 115. Powder B base-Fenton Fine Rib 11 3/4" vase-Marigold overlay
- _____ 116. **B-Pilgrim Glass Nugget 3 3/4" tall pitcher-Very different**
- _____ 117. B-Pilgrim Glass Nugget 5 1/4" bulbous pitcher-Applied marigold handle
- _____ 118. **P-Mlbg Swirled Hobnail 9 1/2" vase-Radium finish**
- _____ 119. AO-N Diamond Point 9 1/2" vase-Crack across base
- _____ 120. **AO-Jefferson squatty 6 1/4" Heather Bloom vase-5 1/2" opening**
- _____ 121. B-Fenton Peacock Tail 4 1/2" deep, round bowl-Superior color
- _____ 122. **Pastel AO-N Beaded Cable rosebowl-1" of opal**
- _____ 123. Light M- Fenton 6" Persian Medallion plate-Orange Tree exterior
- _____ 124. **Red Amberina-Imp Grape 5 1/2" rosebowl-Iron Cross Mark-radium**
- _____ 125. B-Fenton 9" Leaf Chain plate-Super color, repair on base
- _____ 126. **P-N Grape and Cable spat fid 9 1/4" plate-Meander exterior-Fabulous blues**
- _____ 127. Deep B-Fenton Holly ruffled compote
- _____ 128. **Royal B-Fenton goblet shape Holly compote**
- _____ 129. Rare W-Fenton Miniature Blackberry compote-Polished base
- _____ 130. **Vas-Fenton whimsied ruffled Orange Tree compote from wine glass-Marigold overlay**
- _____ 131. Royal pastel B-Fenton Peacock and Grape 9", collar base, ruffled bowl-Great example
- _____ 132. **P-Dugan Cherries 6" CRE plate-1 1/2" tall, Jewelled Heart exterior**
- _____ 133. M-Fenton Kittens cup-Radium finish, incredible strike
- _____ 134. **BA-Dugan Holly and Berry 6 3/4", seven ruffle handled nappy**
- _____ 135. Pastel Lav-Dugan Grape Delight nut bowl-Rare color to find in this pattern
- _____ 136. **PO-Dugan Wishbone and Spaded 5 1/2" round berry bowl-Nice one**
- _____ 137. PO-Dugan Soutache 9" CRE dome base plate-Loaded with opal
- _____ 138. **PO-Dugan Four Flowers 9 1/2" round bowl-Soda Gold exterior-Rare shape**
- _____ 139. PO-Nautilus sugar bowl-Signed Northwood in script
- _____ 140. **W-Dugan Grape Delight nut bowl-Chip on one foot**
- _____ 141. Incredible W-Dugan Six Petals 8 1/2" ruffled bowl-Best pastels you'll ever see!
- _____ 142. **Vas-Dugan 6" pinched Estate vase**
- _____ 143. Clambroth-Dugan pinched Venetian rosebowl
- _____ 144. **PO-Dugan Pinched Swirl 6 1/4" vase-Dark and nice**
- _____ 145. M-Fenton 5 1/4" squatty Boggy Bayou vase-3 1/2" base, very unusual size vase
- _____ 146. **Radium Electric BA-Dugan 9 3/4" Lined Lattice vase**
- _____ 147. Radium M-Dugan 12" Target vase-Color top to bottom
- _____ 148. **Crystal-Dugan 11" Target vase-Not iridized**
- _____ 149. M-Dugan Lattice and Points 4" squatty vase-5 1/2" ruffled opening, Daisy interior
- _____ 150. **Rare Lav Opal-Fenton Dragon and Lotus ruffled, collar base bowl**
- _____ 151. Rare Lav-Dugan Apple Blossom Twigs 8 1/2" ICS bowl
- _____ 152. **Lav-Imp Pansy open sugar bowl**
- _____ 153. Beautiful Lav-Dugan Leaf Rays seven ruffle nappy
- _____ 154. **Lav-Dugan Venetian 4 1/2" pinched vase**
- _____ 155. Lav-Dugan Estate 6" pinched vase-Minor rim nick
- _____ 156. **Citrine-N Concave Diamonds 6" bulbous vase-4 3/4" opening-Very scarce**
- _____ 157. Smoke-Imp Double Scroll centerpiece bowl
- _____ 158. **Smoke-Imp Double Scroll candlesticks-pair**
- _____ 159. Smoke-Imp Floral and Optic footed rosebowl-Outstanding radium irid.
- _____ 160. **Purple Slag-N Beaded Cable CRE, footed candy dish-Not iridized**
- _____ 161. M-Imp Grape nut bowl-RARE shape
- _____ 162. **Ice G-Fostoria Brocaded Palms footed candleholder (just one)**
- _____ 163. Pink-Fostoria Brocaded Palms footed candleholder (one only)
- _____ 164. **Pink-Fostoria Brocaded Palms 6 1/2", ten sided two handled bowl**
- _____ 165. Ice G-Fostoria Brocaded Palms 7" handled plate
- _____ 166. **Pink-Fostoria Brocaded Palms oblong planter with flower frog**
- _____ 167. Pink-Fostoria Brocaded Palms ice bucket with metal handle
- _____ 168. **Ice B-Fostoria Brocaded Acorns 6 1/2" two sides up handled bonbon-Choice A or B**
- _____ 169. Ice B-Fostoria Brocaded Acorns 6", eight sided, two handled bowl
- _____ 170. **Ice B-Fostoria Brocaded Acorns 6 1/2" handled plate**
- _____ 171. Ice G-Fostoria Brocaded Daffodils 7 1/4", six sided, handled plate
- _____ 172. **Ice G-Fostoria Brocaded Palms 7" oval, stemmed relish**
- _____ 173. M-Enameled Daisy bulbous 7 1/2" tall, six ruffle vase-Very scarce
- _____ 174. **Peach Lustre-Fire King "Tom and Jerry" Punch bowl and 8 cups-Unusual find**
- _____ 175. Sapphire B-N Stretch One pound covered candy jar
- _____ 176. **W-N Stretch 10" center handle server**
- _____ 177. Rare Aquamarine Stretch-Fenton Rib Optic 7 3/4" ruffled vase
- _____ 178. **Rare Aquamarine Stretch-Fenton 10 3/4" ball footed and ball handled, twelve sided centerpiece bowl**
- _____ 179. Celeste B-Fenton Rose Spray JIP mini compote-Lovely little rarity
- _____ 180. **Fantastic BO-Westmoreland Pearly Dots ruffled compote**
- _____ 181. AO-N Hearts and Flowers ruffled compote-Fantastic butterscotch overlay
- _____ 182. **Sensational Pastel M-N Harvest Poppy ruffled compote-Rare and so nice**
- _____ 183. Rare A-Fenton Miniature Blackberry compote-several chips on base
- _____ 184. **Rich M-Imp Grape ruffled compote-Radium**
- _____ 185. P-N Fruits and Flowers stemmed bonbon-Multi electric
- _____ 186. **M-N Hearts and Flowers ruffled compote-Great iridescence top to bottom**
- _____ 187. Electric P-N Blackberry ruffled compote-BW exterior
- _____ 188. **Pumpkin M-Fenton Persian Medallion small 5 1/2" ruffled compote-Extremely hard to find**
- _____ 189. P-Fenton Persian Medallion large 6 3/4", CRE ruffled compote-Scarce color and size
- _____ 190. **M-Fenton Persian Medallion large CRE ruffled compote**
- _____ 191. Awesome M-Fenton 10" Chrysanthemum/Windmill footed, ICS centerpiece bowl-Blues, pinks and yellows!
- _____ 192. **Dark M-Fenton Stag and Holly 10 3/4", ICS centerpiece bowl-Loads of blues and pinks**
- _____ 193. Scarce Lav-Fenton Holly 9" ruffled bowl-Multi color gorgeous overlay

194. **Rich Clambroth-Fenton Holly 8 1/2" ICS bowl-Pinks and yellows**
195. Electric B-Fenton Holly 9", six ruffle bowl-Just the best blues and purples
196. **Limeish G-Fenton Holly 9", eight ruffle bowl-Odd base color**
197. B-Fenton Holly 9 1/4", 3 in 1 edge bowl-Great color and shape
198. **Electric P-Three Fruits Medallion ruffled, spat ftd 9" bowl**
199. Radium Electric P-Imp Star of David 9" ruffled bowl-Imperial electric at its finest
200. **Rare A-Fenton Brazier's Candies 6" plate-Advertising is hot, hot, hot!**
201. Lav-Imp Cobblestone 9" ruffled bowl-Multi electric winner
202. **G-Imp Grape carafe-More difficult to find every year**
203. Scarce G-Fenton mid-size Rustic Vt. 16" vase-Way above average for color and a scarce one
204. **AO-Egyptian Queen 5 3/4" vase-Super scarce and nice**
205. Amber-1971 ACGA Beaded Shell mug
206. **AO-1978 ACGA Beaded Shell mug**
207. M-Imp Twins fruit bowl base only
208. **Smoke-1969 Presznick's Carnival Glass Museum mug**
209. Sapphire-1972 Presznick's Carnival Glass Museum mug-signed in script: Eleanor from Rose and Joe
210. **M-Jain Diamond and Heart 6 1/4" vase**
211. M-Jain Diamond and Heart 5 1/4" vase
212. **Scarce Vas Opal-Singleton Bailey 9 1/2" Farmyard ruffled bowl--Only 118 made**
213. Blue Burmese-Singleton Bailey 9 3/4" Farmyard ruffled bowl-Only 103 made
214. **Rare B-MIMI 9" ruffled Farmyard bowl**
215. Red-MIMI 11" Farmyard chop plate-Very scarce also
216. **Ice B-N Fine Cut and Roses rosebowl-Fancy interior-Desirable color**
217. Dark M-N Fine Cut and Roses rosebowl-Plain interior
218. **Scarce P-N Fine Cut and Roses rosebowl-Plain interior**
- 218A. **Rare A-N Fine Cut and Roses rosebowl-Plain interior, no ring on bottom**
219. P-N Fine Cut and Roses rosebowl-Fancy interior
220. **Fantastic G-N Fine Cut and Roses rosebowl-Plain interior, normal foot flaws**
- 220A. **White w/lavender tint-N Beaded Cable rosebowl-Different!**
221. A-N Beaded Cable rosebowl-Rayed interior
222. **Elec B-N Peacock at Urn 5 1/2" ICS bowl**
223. Dark M-Fenton Horse Medallion rosebowl-Great pattern to collect
224. **Excellent G-Fenton 7 1/4" Horse Medallion ruffled bowl**
225. Dark M-Fenton Lions 6 1/2" ruffled bowl-Well detailed
226. **Scarce B-N 9" Peacocks Plate-Rib exterior-Superb multi electric**
227. A-Fenton Peacock at Urn 9" ruffled bowl-Delightful iridescence and scarce color
228. **G-N Peacock 8 3/4" ruffled bowl-Tough to acquire and above average**
229. Pastel M-N Peacock PCE bowl-Rib exterior-Fully covered in pinks and blues
230. **Pastel M-N Peacock PCE bowl-Rib exterior-RARE STIPPLING EFFECT**
231. Pumpkin M-N Peacock PCE Bowl-Top Shelf for marigold Peacocks!
232. **Rich M-N Three Fruits stippled, ruffled 8 3/4" bowl-Hot pinks**
233. Lav-N Three Fruits stippled, ruffled 8 1/2" bowl-Rib exterior-Multi color irid.
234. **G-N Three Fruits stippled, RARE PCE bowl-Scarce BW exterior-WHEW!**
235. Great Pastel M-N Three Fruits PCE bowl-Plain exterior, loads of pinks
236. **M-N Three Fruits 9" plate-BW exterior, outstanding example**
237. Pastel M-N PCE stippled Strawberry bowl-Rib exterior-Tremendous pinks and blues
238. **Pumpkin M-N PCE stippled Strawberry bowl-Rib exterior-Great coloration**
239. BA-Carnival Beaded Necklace-Double 16" strand
240. **BA-Carnival Beaded Necklace-16" five strand**
241. BA-Carnival Beaded Necklace-single 17" strand
242. **BA-Carnival Beaded Necklace-Triple 15" strand**
243. BA-Carnival Beaded Necklace-Double 13" strand
244. **BA-Carnival Beaded Necklace-single 19" strand**
245. BA-Carnival Beaded Necklace-single 17 1/2" strand
246. **BA-Carnival Beaded Necklace-single 17 1/2" strand**
247. W-Carnival Beaded Necklace-single 16" strand
248. **W-Carnival Beaded Necklace-Double 18" strand**
249. W-Carnival Beaded Necklace-Triple 18" strand
250. **Ultra Rare Emerald G-Fenton Orange Tree 11", flared centerpiece footed bowl-When have you seen another one?**
251. G-Fenton Orange Tree 3 in 1 edge Orange Tree collar base bowl-Rare shape and color
252. **G-Fenton Concord 7", round, flared, deep nut bowl-First one in this shape I've seen**
253. Rich M-Fenton Concord 8 1/2" ruffled bowl-Another exceptional example
254. **Scarce A-Fenton Concord 8 1/2" ruffled bowl-Not many of these around**
255. Rare A-Fenton Concord 9" plate-Well above average
256. **Dugan Blue-Windflower 9" plate-A beauty and a very overlooked pattern**
257. W-Dugan Apple Blossom Twigs 9", low ten ruffle bowl-Frosty with wonderful pastels
258. **Exquisite W-Dugan flat 8 3/4" Fanciful plate-Just the best for iridescence**
259. W-Dugan Fanciful 8 3/4", 3 in 1 low crimp bowl-Also has great pastels
260. **Radium M-Dugan Brooklyn Bridge six ruffle bowl-Fine example**
261. P-Dugan 9", tri-corner, CRE Dogwood Sprays dome footed bowl
262. **Rare M-Dugan Cosmos Vt. 10" chop plate-Few known**
263. P-Dugan Cherries 10", 8 ruffle bowl-Scarce and beautiful bowl
264. **Frosty W-Palm Beach water pitcher**
265. W-Palm Beach tumbler-Base chips
266. **Deep P-N 10 1/2" Tree Trunk vase**
267. G-N Tree Trunk Vt. 8" vase-Alaskan effect
268. **Violet-N Thin Rib 7 1/4" squatty vase-Most unusual color!**
269. G-N Feathers 10 3/4" vase
270. **Lav-N Thin Rib 10" vase-Pretty**
271. Teal-Westmoreland 8" Corinth vase
272. **Dark M-Imp Thin Rib and Drape 5 1/2" vase-Great color**
273. Rich M-Imp Ripple 12 1/2" swung vase-As good as they get
274. **Smoke-Imp Swirl vase**
275. M-Fenton Knotted Beads 10" vase-CRE top, radium finish
276. **M-Fenton Rustic 9" vase-Dark and nice**
277. Lav-Fenton Fine Rib 9 1/4" vase



278. **Amber-Fenton Fine Rib 10" vase-Chip on base**
 279. B-Enamelled Cherries bulbous water pitcher-Beautiful example
280. **Rare Teal-Fenton 5 1/2" Scale Band/Stippled Rays bowl**
 281. Elec B-N Fruits and Flowers stemmed bonbon
282. **Florentine Ice G-Stretch 8 1/2" single candlestick**
 283. Pink Stretch-Fenton Velva Rose covered candy dish w/floral finial-Very scarce
284. **Sapphire Stretch-N 8 3/4" low compote with Tree Bark base**
 285. Aqua Stretch-N 7 1/2" round, rolled rim bowl with Tree Bark base
286. **W Stretch-N JIP 9" bowl with Tree Bark footed base**
 287. W Stretch-N 8 3/4" two sides up bowl with square Tree Bark base
288. **Sapphire Stretch-N 11" cake stand with Tree Bark base**
 289. Sapphire Stretch-N 9 1/2" compote with Tree Bark base
290. **Sapphire Stretch-N 10 1/2" cake stand with Tree Bark base-Only base is iridized**
 291. Russet Stretch-N #666 wide, flared, cupped comport-7 3/4" wide, 6 3/4" tall-Unique stem
- 291A. Celeste Stretch-Dugan Adam's Rib giant stemmed centerpiece bowl
292. **BA-Carnival Beaded 16" Necklace and Carnival Beaded sash**
 293. BA-Carnival Beaded 16" Necklace with Earrings
294. **M-N 9" Three Fruits plate-BW exterior**
 295. M-N Wishbone ruffled, footed bowl-Great multi-color iridescence
296. **Emerald G-N Wishbone ruffled, footed bowl-Has internal fracture**
 297. Scarce P-N 8 1/2" tri-corner Wishbone footed plate
298. **A-N Wishbone 8 1/2" footed plate-Much better than average**
 299. W-N Poppy Show 9 1/4" plate-Loaded with blues
300. **Rich M-N Poppy Show 9" plate-Pinks, yellows and blues**
 301. Ice B-N Poppy Show 9 1/4" plate-Lots of pinks and blues
302. **B-N Poppy Show ruffled bowl-Beautiful**
 303. M-N Memphis punch cup
304. **P-Dugan S-Repeat punch cup**
 305. W-Dugan Lattice and Points 7 1/2" ruffled bowl-Daisy center
306. **B-Fenton Garland rosebowl**
 307. Scarce Yellow Vas-Fenton Strawberry bonbon-Rich marigold overlay
308. **B-N Double Loop open sugar-Scarce and nice**
 309. G-Mlbg 5 3/4" Cosmos bowl-Radium and ruffled
310. **G-Mlbg 7" Holly Sprig 3 in 1 ruffled edge bowl-Radium finish**
 311. B-Brockwitz Curved Star open compote
312. **Honey Amber-Gooseberry 4 3/4" sauce bowl-Palm Beach exterior**
 313. Honey Amber-Cosmos and Cane 4 1/4" round berry bowl
314. **Clambroth-Fenton Holly 9 3/4" plate-Radium and nice**
 315. Fenton 9 3/4" Holly Plate-Strangest color I've ever seen--Dark amber, with greens, reds in marie--Mystifying, but is beautifully iridized
316. **Rare Lav-Fenton Grape and Cable 9" twelve scallop, ball footed plate-Possibly one of a kind**
 317. Pumpkin M-Fenton Lotus and Grape 8 3/4" ruffled bowl
318. **M-Fenton Coral 8 3/4" ruffled bowl-Scarce and nice**
 319. M-Fenton Coral 8" ICS bowl-Also scarce and also pretty
320. **Very Rare RED-Fenton 7" Vintage (Grape) ruffled bowl**
 321. M-Fenton Peacock Tail 6 1/2" plate-Radium and scarce
322. **G-Fenton 9 1/8" Lotus and Grape plate-One of the best!**
 323. M-Imp Columbia dome base plate-Interior fracture
324. **Emerald Green-Four Flowers Vt. 9 1/4" plate-Super**
 325. White Beaded iridized evening bag
326. **Bronze Beaded iridized evening bag**
 327. M-N Good Luck ruffled bowl-Rib exterior. covered with pastel blues and pinks
328. **M-N Good Luck stippled ruffled bowl-Rib exterior, excellent example**
 329. Fantastic Electric B-N Good Luck stippled ruffled bowl-Rib exterior
330. **B-N Good Luck stippled ruffled bowl-Rib exterior-Loaded with mauve and green irid**
 331. B-N Good Luck ruffled bowl-Rib exterior, great multi color irid
332. **Scarce G-N Good Luck ruffled bowl-Rib exterior, lovely highlights**
 333. Lav-N Good Luck ruffled bowl-Rib exterior, multi electric
334. **B-N Good Luck PCE bowl-Rib exterior. electric all the way**
 335. M-Imp Double Scroll candlesticks-Beautiful pair
336. **Rare Amber-Florentine 8 1/2" candlesticks-A beautifully matched pair**
 337. Pastel M-N Grape and Cable single candlestick
338. **Teal Flashed-Honeypot-Neat novelty item**
 339. Clambroth-Imp Frosted Block 5" compote
340. **Pumpkin M-Woodpecker wall vase**
 341. M-Imp Star and File wine glass
342. **M-Imp Octagon goblet-Dark and nice**
 343. M-Imp Optic and Buttons stemmed goblets-Iron Cross Mark, scarce-Choice A or B
344. **M-Canada Dry Soda bottle with original labels**
 345. Dark M-Swan covered dish-Sowerby
346. **B-Covered Hen dish-Sowerby**
 347. M-Covered Hen dish-Sowerby
348. **Scarce B-N Poinsettia ruffled footed bowl-Extra nice irid**
 349. Dark M-N Poinsettia ruffled footed bowl-Very pretty
350. **Very rare G-N Hearts and Flowers 9" plate-Rib exterior-Scarce and nice**
 351. W-N Rose Show ruffled bowl-Pastel colors
352. **Scarce G-N Rose Show ruffled bowl**
 353. Dandy M-N Rose Show 9 3/8" flat plate-Fabulous pastel irid
354. **M-Dugan Vineyard tumblers--2 x \$**
 355. B-Fenton Butterfly and Fern tumbler-Great multi color irid
356. **Dark M-Fenton Waterlily and Cattails tumbler**
 357. M-Imp Soda Gold 7" cuspidor
358. **M Flashed-Kerr 3 1/2" tall fruit jar**
 359. M-Swan 4" long ashtray or lipstick holder
360. **M Flashed-Pipe matchholder-Neat novelty item**
 361. M-Pyrex insulator
362. **M-Hemingray D-510 insulator**
 363. M-Hemingray O-4 insulator
364. **Flashed M-Little Pig brand mustard jar**
 365. G-1978 ICGA Town Pump
366. **M-1980 ICGA Town Pump**
 367. M-Mr/Mrs. Butterworth Salt and Pepper-Mkd IG
368. **Amber-Mr/Mrs. Butterworth Salt and Pepper-Mkd IG**
 369. G-1999 ICGA Santa Claus figurine
370. **Rare PO-Pastel swan salt**
 371. Rare P-Pastel swan salt
372. **Celeste B-Pastel swan salt**
 373. Vas Ice G-Pastel swan salt
374. **Florentine Ice G Vas-Pastel swan salt**
 375. Pink-Pastel swan salt

- _____ 376. AO-Pastel swan salt
- _____ 377. Vas-Pastel swan salt-Not iridized
- _____ 378. PO-Pastel swan salt-Not iridized
- _____ 379. BO-Pastel swan salt-Not iridized
- _____ 380. Yellow Vas Opal-Pastel swan salt-Not iridized
- _____ 381. White Opal-Pastel swan salt-Not iridized
- _____ 382. Lav Crystal-Pastel swan salt-Not iridized
- _____ 383. Clear-Pastel swan salt-Not iridized
- _____ 384. Red Amberina-Pastel swan salt-Mkd IG
- _____ 385. AO-Pastel swan salt-Signed Crider
- _____ 386. White Opal-N Poinsettia footed ruffle bowl-Applied marigold overlay-Age??
- _____ 387. Green Opal Frog paperweight-Signed Crider
- _____ 388. Dark M-Frog paperweight-Signed Crider
- _____ 389. Sapphire-Frog paperweight-Signed Robert Hansen
- _____ 390. G-Beetle paperweight
- _____ 391. White Opal-Hand vase 3 3/4" tall-Marigold overlay
- _____ 392. M Flashed-Bird salt shaker, glass eyes
- _____ 393. Red-Morning Glory Tankard -ACGA 1989
- _____ 394. Red-1990 ACGA Inverted Strawberry Fairy Lamp
- _____ 395. Red-ACGA 1991 Inverted Strawberry handled basket
- _____ 396. Red-Kittens handled basket-1982 Dorothy Taylor Encore
- _____ 397. W-Imp Frosted Block 7 3/4" ruffled bowl
- _____ 398. W-Imp Frosted Block 4 1/2" rosebowl
- _____ 399. W-Imp Frosted Block nut bowl
- _____ 400. Clambroth-Imp Frosted Block 8" square bowl
- _____ 401. Clambroth-Imp Frosted Block 7" round bowl
- _____ 402. Clambroth-Imp Frosted Block nut bowl
- _____ 403. Clambroth-Imp Frosted Block 4 1/2" rosebowl
- _____ 404. BO-Dugan 12 1/2" Wide Rib vase-Not iridized
- _____ 405. White Opal-Inverted Feather and Fan tumbler-Gold decor.-Not iridized
- _____ 406. BO-Dugan 11" Spiralex vase-Not iridized
- _____ 407. Powder Blue Opal-Fenton 11 1/2" Boggy Bayou vase-Not iridized
- _____ 408. BO-Jefferson 13" Jewels and Drapery vase-Not iridized

- _____ 409. BO-Jefferson 12 1/2" Iris and Meander vase-Not iridized-Base chip
- _____ 410. Green Opal-Jefferson 11" Lined Heart vase-Not iridized
- _____ 411. BO-N Feathers 12" vase-Not iridized
- _____ 412. White Opal-Dugan Inverted Fan and Feather rosebowl-Not iridized
- _____ 413. BO-Dugan Question Marks CRE square compote
- _____ 414. BO-N Beaded Cable 8" ruffled candy dish-Not iridized
- _____ 415. White Opal-N Beaded Cable CRE rosebowl. sides nearly vertical-Not iridized
- _____ 416. White Opal-Dugan Inverted Fan and Feather 7" footed candy dish-Not iridized
- _____ 417. Persian B-Fenton 9" Laurel Leaf vase-Butterfly and Berry interior-Not iridized
- _____ 418. Ice G Vas-Dugan S-Repeat tumbler with gold decor.-Not iridized
- _____ 419. Crystal-Dugan 11" Target vase-Not iridized
- _____ 420. Sapphire-Dugan 7" squatty Wide Rib vase-Not iridized
- _____ 421. Crystal-Imp 5" Ripple vase-4 1/2" opening-Not iridized
- _____ 422. Crystal-Jefferson 11" Heatherbloom vase-Not iridized
- _____ 423. Crystal-Jefferson 11 3/4" Lined Heart vase-Not iridized
- _____ 424. Crystal-N Fine Rib 10 1/2" vase-Not iridized
- _____ 425. Dark G-N Four Pillars 10 1/2" vase-Not iridized
- _____ 426. Crystal-N Feathers 11" vase-Not iridized
- _____ 427. Crystal-N Tree Trunk Vt. 11" vase-Not iridized
- _____ 428. Crystal-N Tree Trunk Vt. 10 1/2" vase-Not iridized
- _____ 429. Crystal-N Diamond Point 10" vase-Not iridized
- _____ 430. Crystal-N Diamond Point 9" vase-Not iridized
- _____ 431. Crystal-U.S. Glass Palm Beach cruet with stopper-Not iridized
- _____ 432. M Flashed-Miniature mug-1 1/2" tall
- _____ 433. B-Bicentennial Joe St Clair Indian toothpick holder
- _____ 434. W-Indian toothpick holder-Contemporary
- _____ 435. Indigo B-Wreathed Cherry toothpick holder-Contemporary
- _____ 436. Indigo B-S-Repeat toothpick holder-Contemporary
- _____ 437. M-Bobeches-4 1/2" diameter--2 x S
- _____ 438. M-Fenton Orange Tree shaving mug
- _____ 439. M-Sowerby Scroll Embossed ashtray
- _____ 440. M-Dutch Windmill ashtray

SEND ALL MAIL TO:

**18350 Hunters Ridge Ct.
Boonville, MO 65233**

**For Free Color Catalogs & Information Write:
Mickey Reichel
18350 Hunters Ridge Ct., Boonville, MO 65233
or Call: 660-882-5292 days or
660-882-5283 evenings
E-mail: mreichel@AWK-SHN.com**

**WANTED - QUALITY CARNIVAL GLASS
AND ANTIQUES**

*"We don't want all the Business,
Just Yours."*

WE DO AUCTIONS RIGHT!!

Approximately 20 additional carnival lots and box lots to conclude the auction.

👉 2005 CALENDAR

**Watch For:
SPECIAL ADVANCED Post Card Collection
SPECIAL COIN & Related auction
CARNIVAL AUCTION - June 18, 2005
in Boonville**

SPECIAL NOTE:

**NO SUNDAY CALLS, PLEASE!
Winning Absentee Bidders will be contacted
Monday through Wednesday of the week following
the Auction!**

Thank You!

