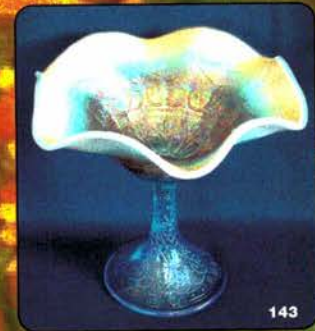
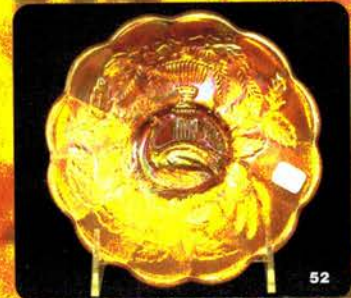


Carnival Glass

AUCTION

Saturday, May 14th, 2005 -- 9:30 A.M.

Don and Mabel Poppy Collection



Seeck Antique Auction Center
15564 300th St (US Hwy 65 North)
Mason City, Iowa

Seeck Auctions

P.O. Box 377
Mason City, Iowa 50402

JIM & JAN SEECK

641-424-1116



Carnival Glass Auction
SATURDAY, May 14th, 2005 — 9:30 A.M.

Seeck Antique Auction Center – Mason City, Iowa
 (Preview: Friday, May 15th 3 to 6 pm)
NO BUYER'S PREMIUM

Seeck Auctions is pleased to be selling at auction the collection of Don and Mabel Poppy from Wisconsin. Don and Mabel are long time collectors and have been active in the Lincoln Land Carnival Glass Club for many years. Don and Mabel loved compotes and as you can see by the catalog, they have many as well as other very nice pieces of glass. Hope to see you all in Mason City!

Don't forget to check out our website for lots of pictures!

www.seeckauction.com

Also, please email us and we will put you on our email mailing list for auction notices.

Terms: Cash or Check, VISA and MasterCard accepted w/proper ID. **3% Clerking Fee** on all purchases except for payment of cash or check. Announcements made day of sale take precedence over any printed information.

Lunch will be available.

ABSENTEE BID POLICY

1. Write-in bids will be accepted by sending the numbers of the item(s) desired and the amount bid on each to:
Seeck Auctions, PO Box 377, Mason City, Iowa 50402.
2. Bids may be called in over the telephone. (This is not live auction bidding) (641)424-1116.
3. You may email your bids to us: **jimjan@seeckauction.com** Continue to include the numbers of the item(s) you would like to bid on and amount bid on each, please include your telephone number.
4. There is a \$5 handling charge for each successful bid. Shipping and insurance charges are additional.
5. Bidders will be notified by phone/email if their bid(s) are successful. This will be done 1 - 3 days after the auction.
6. Please have all bids in by **Thurs., May 12th**. All bids (by mail, phone or email) after this date may not be carried out.
7. Please place bids in the following increments: \$1 to \$300 - \$5 increments \$300 up - \$25 increments.
8. **If you do not receive an item that sold for less than your bid, assume we cancelled your bid because the piece of glass had below average color, manufacture problem, damage or was not listed correctly.**
9. Auction results are posted on our website within 5 days of the auction (depending on drive time home from the sale.) Also results are available in many of the club newsletters.

Don't forget to check out our website for lots of pictures!

Jim and Jan Seeck **Seeck Auctions** 641-424-1116

- ___ 1. Holly ruffled compote - green
- ___ 2. Holly ruffled compotes (4) - powder blue - marigold overlay, choice
- ___ 3. Holly ruffled compote - amethyst
- ___ 4. Holly ruffled compote - blue
- ___ 5. Holly ruffled compote - marigold
- ___ 6. Holly & Berry tri-cornered hdd nappy - peach opal
- ___ 7. Coin Spot ruffled compotes (2) - peach opal - choice
- ___ 8. Coin Spot ruffled compote - lime green
- ___ 9. Coin Spot ruffled compote - marigold
- ___ **10. Peacock & Grape 9" plate - marigold - dark & super, beautiful**
- ___ 11. Pinched Swirl tri-cornered whimsey - peach opal
- ___ 12. Captive Rose crimped edge ruffled compote - amethyst
- ___ 13. Ski Star ruffled sauce - peach opal
- ___ **14. Butterfly & Berry 4 pc. table set - marigold - scarce & nice, sold as set**
- ___ **15. Orange Tree 9" plate - blue - scarce**
- ___ **16. Orange Tree w/trunk 9" plate - white - pretty**
- ___ 17. Orange Tree 9" plate - marigold
- ___ 18. Strawberry card tray shaped bon bon - blue
- ___ 19. Persian Medallion crimped edge large size compote - marigold
- ___ 20. Strawberry ruffled bowl w/BW back - green
- ___ 21. Strawberry ruffled bowl w/BW back - marigold
- ___ **22. Fine Rib 9 1/2" vase - red - heat checks in base**
- ___ 23. Fine Rib 10" vase - vaseline - has light marigold overlay
- ___ **24. Orange Tree mug - red - cherry red color, a beauty**
- ___ 25. Orange Tree mug - purple - minor nick on base, scarce color
- ___ 26. Orange Tree mugs (2) - blue - choice
- ___ 27. Orange Tree mugs (2) - marigold - choice
- ___ **28. Basketweave Open Edge JIP basket - red - cherry red, nice**
- ___ 29. Basketweave Open Edge JIP basket - odd blue - similar to renegers
- ___ 30. Basketweave Open Edge JIP baskets (2) - blue - choice
- ___ 31. Basketweave Open Edge JIP basket - marigold
- ___ **32. Acorn Burrs punch bowl, base & 2 cups - marigold - very nice set & rare**
- ___ 33. Birds & Cherries ruffled compote - amethyst
- ___ 34. Birds & Cherries ruffled compote - green
- ___ **35. Fruits & Flowers 7" ruffled bowls (2) - purple both super, choice**
- ___ **36. Daisy & Drape flared out vase - aqua opal - scarce, nice**
- ___ **37. Fenton's Peacock at Urn ruffled compote - white - scarce color**
- ___ **38. Fenton's Peacock at Urn ruffled compote - blue - very pretty example**
- ___ 39. Fenton's Peacock at Urn ruffled compote - powder blue - has light marigold overlay
- ___ 40. Fenton's Peacock at Urn ruffled compotes (2) - aqua - one pastel, one w/marigold overlay, choice
- ___ 41. Fenton's Peacock at Urn ruffled compotes (3) - lime green - w/marigold overlay, choice
- ___ 42. Fenton's Peacock at Urn ruffled compotes (2) - marigold - choice
- ___ **43. Butterfly & Fern water pitcher - blue - pretty & nice**
- ___ 44. Butterfly & Fern tumbler - blue
- ___ 45. M'burg Holly Sprig 8" tri-cornered bowl - amethyst - radium
- ___ 46. Wishbone & Spades ruffled sauce - peach opal - nice
- ___ **47. Nippon PCE bowl w/BW back - ice blue - scarce, pretty**
- ___ 48. Inverted Coin Dot water pitcher - marigold
- ___ 49. Blackberry Bramble ruffled compotes (2) - green choice
- ___ 50. Blackberry Bramble ruffled compotes (2) - amethyst - choice
- ___ 51. Blackberry Bramble ruffled compotes (2) - marigold - choice
- ___ **52. N's Peacock at Urn 6" plate - marigold - have to call it a plate, does not turn up at all, super pretty, very rare!**
- ___ 53. Star of David & Bows dome ftd ruffled bowl - amethyst
- ___ 54. Rococco vase - smoke - scarce, nice
- ___ **55. Grape & Cable bon bon - blue - electric & super**
- ___ 56. Grape & Cable bon bon - purple - pretty
- ___ 57. Stippled Grape & Cable bon bon - marigold - pastel, pretty
- ___ 58. Shell & Sand round shaped bowl - marigold
- ___ **59. Persian Medallion 10" ruffled bowl - green - very pretty**
- ___ 60. Inverted Feather parfaits (2) - marigold - choice
- ___ **61. Double Stemmed Rose dome ftd ruffled bowl celest blue - scarce, highly desirable & nice**
- ___ 62. Double Stemmed Rose dome ftd ruffled bowl - peach opal
- ___ 63. Singing Birds mug - purple
- ___ 64. Singing Birds mug - marigold
- ___ 65. Leaf Chain 7" plates (2) - marigold - choice
- ___ 66. Holly IC shaped bowl - green - pretty
- ___ 67. Holly IC shaped bowls (2) - marigold - choice
- ___ **68. Three Fruits 9" plate w/plain back - purple - fantastic stretchy irid.**
- ___ **69. Three Fruits 9" plate w/plain back - green - pretty**
- ___ 70. Three Fruits 9" plate w/BW back - purple
- ___ 71. Stippled Petal tri-cornered crimped edge dome ftd bowl - peach opal - odd shape
- ___ 72. Blackberry Open Edge 2 sides up basket - blue
- ___ 73. Blackberry Open Edge 2 sides up basket - marigold
- ___ 74. Rustic 17" mid-size vase - amethyst
- ___ 75. Fashion 14 pc. punch set - marigold
- ___ **76. Beaded Cable rose bowl - white - scarce color plus nice**
- ___ 77. Beaded Cable rose bowl - blue
- ___ 78. Beaded Cable rose bowl - purple - has rayed interior
- ___ 79. Beaded Cable rose bowls (2) - marigold - choice
- ___ 80. Diamond Points 9" vase - purple
- ___ 81. Diamond Points 9" vase - marigold - nice
- ___ **82. Holly ruffled hatshape - red - nice**
- ___ 83. Peacock Tail 7 pc. berry set - amethyst
- ___ **84. Stippled Rays 7" ruffled bowl - reverse amberina - nice**
- ___ 85. Stippled Rays ruffled bowl - marigold
- ___ **86. Captive Rose 9" plate - green - very pretty plate & highly desirable**
- ___ **86a. Captive Rose 9" plate - amethyst - very scarce color & nice**

- ___ **86b. Captive Rose 9" plate – blue – scarce & desirable**
- ___ 86c. Persian Medallion small size ruffled compote – amethyst – scarce
- ___ 86d. Persian Medallion small size ruffled compote – marigold
- ___ **86e. Unusual Club shape from card set, looks like M'burg but slightly different – light marigold – will not say if it is or isn't M'burg**
- ___ 87. Captive Rose CRE bowl - amethyst
- ___ 88. Windflower hdd nappy - ice green - extremely rare color, nice
- ___ 89. Windflower hdd nappy - amethyst
- ___ 90. Orange Tree ruffled bowls (2) - marigold - choice
- ___ 91. Poppy Pickle dish - ice blue - large chip on edge
- ___ **92. Poppy Pickle dish - green - scarce & nice**
- ___ **93. Poppy Pickle dish - blue - pretty**
- ___ 94. Poppy Pickle dishes (2) - marigold - nice
- ___ 95. Windmill water pitcher - marigold - minor roughness on spout
- ___ 96. Windmill tumblers (2) - marigold - choice
- ___ 97. Two Seventy round compote - blue opal - scarce color
- ___ **98. Fruits & Flowers bon bon - aqua opal - pastel & pretty**
- ___ 99. Fruits & Flowers bon bon - blue - nice
- ___ 100. Captive Rose 3 in 1 edge bowl - amethyst - pretty
- ___ 101. Captive Rose 3 in 1 edge bowl - marigold
- ___ 102. Curved Star cathedral chalice - marigold
- ___ **103. Peacocks 9" plate w/plain back - ice green - super pretty**
- ___ **104. Peacocks 9" plate w/plain back - white - very nice**
- ___ 105. Wreath of Roses ruffled compote - green
- ___ 106. Wreath of Roses ruffled compote - blue
- ___ 107. Wreath of Roses ruffled compotes (3) - marigold choice
- ___ **108. Acorn Burrs butter dish - marigold - scarce, nice**
- ___ 109. Choice of Marigold tumblers: Leaf Tiers, Fenton's Waterlily & Cattails (2), Beaded Shell, Stork & Rushes, Butterfly & Berry (3), Inverted Coin Dot, Raspberry (2), Lattice & Grape, M'burg Diamonds, Fashion, N's Dandelion, Enameled, Floral & Grape, Maple Leaf
- ___ **110. Poinsettia & Lattice ftd ruffled bowl - blue - has electric highlights, very rare**
- ___ 111. M'burg Blackberry Wreath 3 in 1 edge sauce - amethyst - radium
- ___ 112. Persian Garden 6" plate - marigold
- ___ 113. Dragon & Lotus spt ftd ruffled bowl - marigold
- ___ 114. File & Fan ruffled compote - peach opal
- ___ **115. Nippon PCE bowl w/ribbed back - ice blue - scarce, nice**
- ___ 116. Westmoreland Rays ruffled compote - blue opal scarce
- ___ 117. Westmoreland Coin Spot ruffled compote - marigold on milk glass
- ___ 118. Strawberry 9" plate w/plain back - purple
- ___ 119. Strawberry 9" plate w/BW back - marigold
- ___ **120. N's Peacock at Urn IC sauce - ice blue - very pretty example, scarce**
- ___ **121. N's Peacock at Urn IC sauce - purple - nice**
- ___ **122. N's Peacock at Urn IC sauces (2) - marigold - choice**
- ___ 123. Fishscale & Beads 7" plate - white - nice
- ___ 124. Fishscale & Beads 7" plate - marigold - nice
- ___ **125. Orange Tree shaving mug - aqua - has marigold overlay, scarce, nice**
- ___ 126. Fenton's Peacock at Urn goblet shaped compote - aqua - scarce color
- ___ 127. Fenton's Peacock at Urn goblet shaped compote - blue - pretty
- ___ 128. Fenton's Peacock at Urn goblet shaped compote - marigold
- ___ **129. Leaf & Beads rose bowl - aqua opal - butterscotch & nice**
- ___ 130. Leaf & Beads rose bowl - marigold - nice
- ___ 131. Lined Lattice 12" ftd vase - purple - nice
- ___ 132. Lined Lattice 10" vase - white
- ___ 133. Fenton's Peacock at Urn ruffled bowl - marigold
- ___ 134. M'burg Peacock at Urn master IC shaped bowl - amethyst - satin, chip on base
- ___ 135. Fan gravy boat - peach opal
- ___ **136. Pastel Swan - peach opal - opal on bend of neck & tip of tail only**
- ___ 137. Pastel Swan - pink
- ___ 138. Pastel Swan - ice green
- ___ 139. Pastel Swans (2) - celest blue - choice
- ___ 140. Pastel Swan - green opal - non-iridized
- ___ 141. Nautilus whimsey creamer - peach opal
- ___ 142. Holly nut bowl shaped bowls (2) - blue - choice
- ___ **143. Hearts & Flowers ruffled compote - powder blue opal - extremely rare compote, not many known, nice**
- ___ **144. Hearts & Flowers ruffled compote - aqua opal - nice**
- ___ 145. Hearts & Flowers ruffled compote - ice blue - chip on base
- ___ **146. Hearts & Flowers ruffled compote - blue - nice**
- ___ 147. Hearts & Flowers ruffled compotes (2) - marigold - choice
- ___ 148. Hearts & Flowers ruffled compote - white
- ___ 149. Fishscale & Beads banana boat shaped ruffled bowls (2) - peach opal - choice
- ___ 150. Diamond Point Column 17" vase - marigold
- ___ 151. Fenton's Three Fruits 9" plate - green
- ___ 152. Fenton's Three Fruits 9" plate - amethyst
- ___ 153. Drapery candy dish - ice blue - normal feet
- ___ 154. Long Thumbprint Hobnail 8 1/2" vase - blue
- ___ **155. M'burg Rosalind 10" bowl - green - satin & pretty**
- ___ 156. Grape Delight rose bowl - purple
- ___ 157. Grape Delight rose bowl w/ruffled top - purple
- ___ 158. Grape Delight rose bowl w/ruffled top - white
- ___ **159. Grape & Cable 6" ruffled sauce - blue - electric & super, very rare color**
- ___ 160. Grape & Cable 6" ruffled sauce - green
- ___ 161. Grape & Cable 6" ruffled sauce - amethyst
- ___ **162. Five Hearts dome ftd deep round bowl - marigold - very rare piece, not many around**
- ___ **163. Basketweave Open Edge ruffled basket - ice green - scarce, nice**
- ___ 164. Basketweave Open Edge ruffled basket - aqua - nice
- ___ 165. Basketweave Open Edge ruffled basket - powder blue - has marigold overlay
- ___ 166. Basketweave Open Edge ruffled basket - vaseline w/marigold overlay
- ___ 167. Basketweave Open Edge ruffled baskets (2) - blue - choice
- ___ 168. Basketweave Open Edge ruffled basket - marigold
- ___ **169. Stippled Grape & Cable Variant PCE bowl w/ribbed back - blue - very scarce & highly desirable**

- ___ 170. Iris ruffled compote – blue
- ___ 171. Iris ruffled compote - marigold
- ___ **172. Scroll Embossed miniature compote - amethyst - minor manufacture peeling on top edge, rare**
- ___ 173. Vintage whimsey ftd ruffled bowl - amethyst - made from fernery
- ___ **174. Imperial Grape ruffled bowl - purple - super pretty**
- ___ 175. Imperial Grape ruffled bowls (2) - marigold - choice
- ___ **176. Chrysanthemum lg size ftd deep ruffled bowl blue - pretty**
- ___ **177. Lattice & Points ruffled bowl - purple - pretty**
- ___ 178. Lattice & Points ruffled bowl - white
- ___ 179. Lattice & Points ruffled bowl - marigold
- ___ 180. Blackberry Spray ruffled hatshape - red - chip on base
- ___ 181. Apple Blossom Twigs 9" plate - marigold
- ___ 182. Waterlily ftd ruffled sauce - lime green - marigold overlay
- ___ 183. Waterlily ftd ruffled sauce - blue
- ___ 184. Scroll Embossed ruffled sauce w/File back - smoke - pretty
- ___ **185. Broken Arches 8 pc. punch set - purple - extremely rare set & highly desirable, nice**
- ___ **186. Blackberry miniature compote - amethyst - pretty**
- ___ **187. Blackberry miniature compote - green**
- ___ 188. Blackberry miniature compote - marigold
- ___ 189. Blackberry miniature compotes (3) - blue - choice
- ___ 190. Grape & Cable Variant PCE bowl w/plain back - marigold - pretty
- ___ 191. Fisherman's mug - amethyst
- ___ 192. Choice of Green tumblers: Grape & Cable tankards (5), Fluffy Peacock, M'burg Diamonds, Oriental Poppy, Raspberry, Butterfly & Fern, Singing Birds (many are pretty)
- ___ 193. Orange Tree ftd water pitcher - blue - chips on feet
- ___ **194. Border Plants dome ftd 3 in 1 edge bowl - peach opal - very scarce item**
- ___ 195. Tree Trunk 7 1/2" squatty vase - green
- ___ 196. Tree Trunk 11" vase – green
- ___ **197. Fenton's Peacock at Urn IC shaped bowl - blue - pretty**
- ___ 198. Stream of Hearts ruffled compote - marigold
- ___ 199. M'burg Peacock at Urn Mystery bowl - amethyst satin, silvery
- ___ 200. Persian Medallion large size ruffled compote - amethyst
- ___ **201. Holly ruffled bowl - green - pretty**
- ___ 202. Holly ruffled bowls (2) - marigold - choice
- ___ **203. Cosmos & Cane punch bowl shaped ruffled compote - marigold - very scarce**
- ___ **204. Cosmos & Cane punch bowl shaped ruffled compote - honey amber - also scarce & nice**
- ___ **205. Cosmos & Cane punch bowl shaped ruffled compote - white - scarce & nice**
- ___ 206. Mary Ann vases (2) - marigold - choice
- ___ 207. Grape & Cable sweetmeat - purple - minor nick on bottom of lid
- ___ 208. Two Fruits divided bon bon - blue
- ___ 209. Two Fruits divided bon bon - marigold
- ___ **210. Apple Blossom Twigs ruffled bowl w/smooth edge - purple - scarce**
- ___ **211. Basketweave Open Edge two sides up basket - ice green - scarce**
- ___ 212. Basketweave Open Edge two sides up basket - marigold
- ___ 213. Holly 9" plate - blue - scarce
- ___ 214. Holly 9" plate - light marigold
- ___ 215. N's Flute master salt - marigold
- ___ 216. N's Flute indiv salt dip - marigold
- ___ 217. N's Flute compote - marigold
- ___ 218. M'burg Peacock Tail Variant ruffled compote - amethyst - radium & nice
- ___ 219. Beaded Bullseye 10 1/2" vase - marigold
- ___ 220. Beaded Bullseye 6 1/2" vase w/6" mouth - marigold
- ___ **221. N's Peacock at Urn master IC bowl - marigold - super pretty, a real beauty**
- ___ 222. Basketweave Open Edge ruffled lg size basket - blue
- ___ **223. Constellation ruffled compotes (3) - marigold all different, choice**
- ___ 224. Constellation ruffled compote - white - nice
- ___ 225. Grape & Cable Variant 9" plate w/BW back – green – chip on point
- ___ 226. Grape & Cable Variant 9" plate w/BW back - amethyst
- ___ 227. Grape & Cable Variant 9" plate w/BW back - marigold
- ___ **228. Scroll Embossed large size ruffled compote purple - super**
- ___ 229. Scroll Embossed large sized ruffled compote - marigold
- ___ **230. M'burg Peacock at Urn 3 in 1 edge sauce - blue - extremely rare, highly desirable, has silver & gold satin irid.**
- ___ 231. Wide Rib 5 1/2" pinched in vase - peach opal
- ___ 232. Vintage 10" 3 in 1 edge bowl - marigold - pretty
- ___ **233. Orange Tree powder jar – blue - pretty**
- ___ 234. Orange Tree powder jar - marigold
- ___ 235. Fine Cut & Roses rose bowl - ice blue - normal chip on foot
- ___ 236. Fine Cut & Roses rose bowl - purple - normal chip on foot
- ___ 237. Fine Cut & Roses rose bowl - marigold
- ___ 238. Ski Star dome ftd handgrip plate - peach opal - nice
- ___ **239. Pansy low ruffled bowl - lavender - very scarce bowl & nice**
- ___ 240. Pansy ruffled bowl - marigold - pretty
- ___ **241. Scroll Embossed small size ruffled compotes (3) - purple - choice, all nice**
- ___ 242. Scroll Embossed small size ruffled compote - green
- ___ **243. Orange Peel stemmed sherbet - peach opal - souvenir of Dover & Foxcroft, ME, scarce**
- ___ **244. Little Beads ruffled compote - peach opal - scarce**
- ___ **245. Question Mark crimped edge compote - purple - super**
- ___ 246. Question Mark crimped edge compote - peach opal
- ___ **247. Big Basketweave 10" vase - ice blue - super pretty & nice**
- ___ 248. N's Bushel Basket - purple - nice
- ___ 249. N's Bushel Basket - blue - nice
- ___ 250. N's Bushel Baskets (2) - marigold - choice
- ___ **251. Rose Show 9" plate - marigold - dark & pretty, a very nice example**

- ___ 252. Holly & Berry ruffled bowl - purple - super
- ___ 253. Holly & Berry ruffled bowl - peach opal
- ___ **254. Fern ruffled compote - green - scarce**
- ___ 255. Fern ruffled compote - marigold
- ___ 256. Windflower ruffled bowl - amethyst - scarce color
- ___ 257. Windflower ruffled bowls (2) - marigold - choice
- ___ **258. Daisy Squares ftd crimped edge round compote - green - minor pinpoint on top edge, scarce**
- ___ **259. Daisy Squares crimped edge ftd compote - marigold - mold roughness on top edge**
- ___ 260. Dragon & Lotus ruffled bowl - marigold - pretty
- ___ 261. M'burg Primrose ruffled bowl - marigold - satin
- ___ **262. N's Stippled Peacock at Urn IC sauce - blue - scarce**
- ___ **263. N's Stippled Peacock at Urn IC sauce - clambrothy, smokey**
- ___ 264. Shell & Sand ruffled bowl - purple - pretty
- ___ 265. Apple Blossom Twigs 3 in 1 edge bowl - peach opal – very nice
- ___ 266. Strawberry ruffled bowl w/plain back - marigold - super pretty
- ___ 267. Scroll Embossed w/File back ruffled sauce - purple - super
- ___ **268. Hobstar & Fruit 5" ruffled bowl - peach opal - scarce**
- ___ **269. Hobstar & Fruit 5" ruffled bowl - marigold**
- ___ **270. Basketweave Open Edge lg size square shaped basket - ice green – scarce, nice**
- ___ 271. Basketweave Open Edge lg size square shaped basket - white - nice
- ___ 272. Four Flowers 6" plate - peach opal
- ___ 273. Persian Medallion 9" plate - marigold - scarce, very nice
- ___ 274. Holly 3 in 1 edge bowls (2) - white - nice
- ___ 275. Dugan Cherries ruffled bowl - peach opal
- ___ **276. Diamond Lace water pitcher - purple - pretty**
- ___ 277. Diamond Lace tumbler - purple - pretty
- ___ **278. Fishnet epergne - peach opal - scarce & nice**
- ___ 279. N's Thin Rib 6 1/2" squatty vase - green - nice
- ___ **280. Grape Arbor ruffled hatshape - blue - scarce color, made from tumbler**
- ___ 281. Persian Medallion bon bon - blue
- ___ 282. Persian Medallion bon bons (2) - marigold
- ___ **283. Stippled Rays ruffled compote - ice green - scarce, stretchy**
- ___ 284. Ski Star large size ruffled bowl - peach opal
- ___ 285. Single Flower enameled ruffled bowl - peach opal
- ___ 286. Acorn IC shaped bowl - powder blue - light marigold overlay
- ___ 287. Vintage epergne - amethyst - nice
- ___ 288. N's Stippled Rays ruffled bowl - purple - pretty
- ___ **289. M'burg Peacock IC shaped sauce - green - radium, nice**
- ___ **290. M'burg Peacock IC shaped sauce - amethyst radium, nice**
- ___ 291. Stag & Holly spt ftd round bowl - blue
- ___ 292. Butterfly bon bon w/plain back - purple
- ___ 293. Butterfly bon bon w/plain back - marigold
- ___ 294. Choice of Blue tumblers: Rambling Rose, Floral & Grape, Stork & Rushes (2), Apple Trees (2)
- ___ 295. Apple Blossom Twigs ruffled bowl - white - nice
- ___ **296. Basketweave Open Edge IC shaped bowl - ice blue - nice**
- ___ 297. Acanthus chop plate - marigold - pretty
- ___ 298. Bells & Beads ruffled 7" bowl - purple
- ___ **299. Tree Trunk mid-size 13" vase w/plunger base green - extremely rare for these, this one looks emerald, does have manufacture roughness on a couple of points, beautiful!**
- ___ 300. M'burg Holly Sprig card tray shaped bon bon - green - satin
- ___ 301. M'burg Holly Sprig card tray shaped bon bon – marigold
- ___ **302. Old Rose Distillery Stippled Grape & Cable Variant w/ribbed back - green - scarce & nice**
- ___ 303. Ski Star dome ftd hdd basket - peach opal - scarce, chip on edge
- ___ **304. Nippon ruffled bowl w/BW back - white - nice**
- ___ **305. M'burg Nesting Swan ruffled bowl - amethyst - satin, nice**
- ___ 306. Daisy & Plume ftd rose bowl w/Berry interior - purple - typical minor nick on rib of foot
- ___ 307. Daisy & Plume ftd rose bowl w/Berry interior - marigold - nice
- ___ **308. Floral & Grape water pitcher - blue - pretty**
- ___ 309. Raindrops 3 in 1 edge dome ftd bowl - peach opal
- ___ 310. Grape & Cable butter dish - purple
- ___ **311. Fenton's Peacock at Urn 9" plate - white - scarce & nice**
- ___ 312. Holly 2 sides up hatshape - aqua - has marigold overlay
- ___ 313. Orange Tree IC shaped bowls (2) - marigold - choice
- ___ **314. M'burg Strawberry Wreath ruffled compote - amethyst - radium & super**
- ___ 315. Persian Medallion 6" plates (2) - marigold - choice
- ___ 316. Lined Lattice 4 1/2" squatty vase - peach opal - has 5 1/2" mouth
- ___ 317. Poinsettia milk pitcher - marigold
- ___ 318. Choice of vases: Diamond Rib 11" vase - green, Feathers 8" vase - green, April Showers 10" vase - green, Diamond Rib 10" vase - marigold, French Knots 9" vase - marigold, Fine Rib 12" vase - marigold, Ripple 12" vase - amber, Spirilex 11" vase - peach opal, Ripple 8" vase - green, Diamond Rib 7 1/2" vase - amethyst, Corinth 10" vase - peach opal, Four Pillars 9" vase - amethyst
- ___ **319. Vintage fernery - red - very scarce, highly desirable**
- ___ 320. M'burg Peacock at Urn 3 in 1 edge Mystery bowl - green - satin
- ___ 321. Windflower 9" plate – marigold
- ___ 322. M'burg Boutonniere ruffled compote - green - satin
- ___ 323. Grape & Cable hatpin holders (2) - purple - choice
- ___ **324. Chrysanthemum lg sized ftd ruffled bowl - green - rare color & super pretty**
- ___ 325. N's Thin Rib JIP shaped 9" vase - marigold - nice
- ___ 326. Lotus & Grape ruffled bowl - blue
- ___ 327. Stag & Holly lg size ftd ruffled bowl - marigold
- ___ 328. Wishbone ftd ruffled bowl - purple
- ___ **329. Grape & Cable pin tray - purple - scarce**
- ___ 330. Wreath of Roses rose bowls (2) - marigold - choice

- ___ **331. Scroll Embossed 9" plate - purple - super pretty**
- ___ 332. Scroll Embossed 9" plate - green
- ___ 333. N's Eight Sided Bushel Basket - white - nice
- ___ 334. Open Rose 9" plate - amber - scarce color
- ___ 335. Carolina Dogwood round bowl - peach opal
- ___ 336. Twins fruit bowl & base - marigold
- ___ **337. M'burg Peacock at Urn Variant IC sauce - amethyst - has beads on the Urn, satin**
- ___ 338. Fanciful ruffled bowl - marigold
- ___ 339. Heavy Grape master berry bowl - purple
- ___ 340. Grape & Cable powder jar - purple
- ___ 341. Plaid IC shaped bowl - marigold - almost call this a plate
- ___ 342. M'burg Holly Sprig 8" ruffled bowl - green - radium
- ___ 343. Stippled Three Fruits 9" plate w/ribbed back - marigold
- ___ 344. Peacock Tail ruffled compote - blue - scarce color
- ___ 345. Peacock Tail ruffled compote - green
- ___ 346. Peacock Tail ruffled compote - marigold
- ___ 347. N's Wild Rose ftd bowl - marigold
- ___ 348. Mikado ruffled compote - marigold
- ___ **349. Peacocks PCE bowl w/ribbed back - marigold - scarce & desirable, one minor manufacture spot between points**
- ___ 350. Question Mark bon bon - white
- ___ 351. Question Mark bon bons (2) - marigold
- ___ 352. Frosted Block small size rose bowl - marigold
- ___ 353. Grape & Cable 9" plate w/plain back - green
- ___ 354. Star Medallion milk pitcher - marigold
- ___ 355. Cherry Chain 6" plate - marigold
- ___ **356. Horse Medallion ftd rose bowl - marigold**
- ___ 357. Palm Beach banana boat shaped whimsey - amethyst
- ___ 358. Blackberry Open Edge ruffled basket - green
- ___ 359. Blackberry Open Edge ruffled basket - amethyst
- ___ 360. Imperial Grape cup & saucer - green
- ___ 361. Circle Scroll tri-cornered hatshape - purple
- ___ 362. Grape & Cable 9" plate w/BW back - marigold
- ___ 363. Scales ruffled compote - green
- ___ **364. Good Luck 9" plate w/ribbed back - marigold super pink irid. on this plate**
- ___ 365. Fenton's Fine Rib JIP vase - marigold
- ___ 366. Two Flowers ftd ruffled sauce - odd green - towards a lime
- ___ 367. Cherry Circles bon bon - marigold
- ___ 368. Grape & Cable Variant 9" plate w/plain back - marigold
- ___ 369. Hattie ruffled bowl - marigold
- ___ 370. Double Stemmed Rose dome ftd 3 in 1 edge bowl - amethyst
- ___ 371. M'burg Blackberry Wreath 7" ruffled bowl - green - radium
- ___ 372. M'burg Peacock berry sauce - marigold - super, radium
- ___ 373. Blackberry open Edge two sides up basket - powder blue
- ___ 374. Round Up IC shaped bowl - marigold
- ___ 375. Grape & Cable PCE bowl w/BW back - marigold
- ___ 376. Leaf Chain 9" plate - green - lacks iridescence
- ___ 377. Imperial Grape 6" plate - green
- ___ 378. Persian Medallion hair receiver - marigold
- ___ **379. Peacocks 9" plate - marigold - scarce & nice**
- ___ 380. Horse Medallion JIP ftd bowl - marigold
- ___ 381. M'burg Mayan IC shaped bowl - green - radium
- ___ 382. M'burg Hanging Cherries 8" IC shaped bowl - marigold - satin
- ___ 383. Twins ruffled berry bowl - smoke
- ___ 384. Peacock & Grape spt ftd ruffled bowl - marigold pretty
- ___ 385. Basketweave Open Edge lg size IC shaped basket - white
- ___ 386. Choice of compotes: Imperial Grape - smoke, Imperial Grape - aqua, Imperial Grape - marigold, Holly 2 sides up - marigold, Holly crimped edge ruffled - marigold, Holly goblet shaped - marigold, Holly goblet shapes (2) blue, Orange Tree (2) - marigold, N's Flute green
- ___ 387. Holly & Berry bon bon - marigold - scarce color
- ___ 388. Holly & Berry bon bon - green
- ___ 389. Choice of purple tumblers: Acorn Burrs, Imperial Grape, Beaded Shell, Fluffy Peacock, N's Dandelions (2), Peacock at the Fountain, Wreathed Cherry, Grape & Cable tankard
- ___ 390. Fenton's Flute 10" vase - red - very scarce
- ___ 391. Imperial Grape 9" plate - green
- ___ 392. Jockey Club ruffled adv bowl - amethyst - pretty, large chip off edge
- ___ 393. M'burg Grape Wreath Variant crimped edge 6" bowl - marigold - radium
- ___ 394. M'burg Peacock IC shaped sauce - amethyst - satin, silvery
- ___ 395. Leaf Chain ruffled bowl - white
- ___ 396. Thistle 3 in 1 edge bowl - marigold
- ___ 397. Grape & Cable spt ftd 9" plate - green
- ___ 398. Dogwood Spray dome ftd ruffled bowl - peach opal
- ___ 399. Grape & Cable Variant ruffled bowl w/plain back purple
- ___ 400. M'burg Grape Wreath Variant crimped edge sauce - green - radium
- ___ 401. Intaglio Strawberry round bowl - marigold
- ___ 402. Six Petal tri-cornered bowl - peach opal
- ___ 403. Scroll Embossed 9" ruffled bowl w/File back - marigold
- ___ 404. Hattie deep round bowl - marigold
- ___ 405. Wild Rose ftd bowl - green
- ___ 406. Smooth Rays w/Jeweled Heart back crimped edge 6" plate - peach opal
- ___ 407. Wreath of Roses bon bon - green
- ___ 408. Wreath of Roses bon bon - marigold
- ___ 409. Raspberry ruffled compote - marigold - nice
- ___ 410. Raspberry ruffled compote smaller size compote - marigold
- ___ 411. Little Beads tri-cornered crimped edge compote peach opal
- ___ 412. Peacock & Grape IC shaped bowl - blue - silvery
- ___ 413. Birds & Cherries bon bon - marigold
- ___ 414. Fenton's Flowers rose bowl - marigold
- ___ 415. Folding Fan crimped edge ruffled compote - peach opal
- ___ 416. Big Basketweave hddl basket - marigold
- ___ 417. Stippled Rays 6" plate - marigold
- ___ 418. Stippled Rays sugar bowl - lime green
- ___ **419. Hearts & Flowers 9" plate w/ribbed back - marigold - super pretty pink irid., dark**
- ___ 420. 100 plus additional pieces, not listed, sold at and of sale - CHOICE



Seeck Auctions

P.O. Box 377
Mason City, Iowa 50402

PRESORTED
FIRST-CLASS MAIL
U.S. POSTAGE PAID
MINNEAPOLIS, MN
PERMIT NO. 28534

*****AUTO**MIXED AADC 553

Lee Markley
PO Box 306
Mentone, IN 46539-0306

