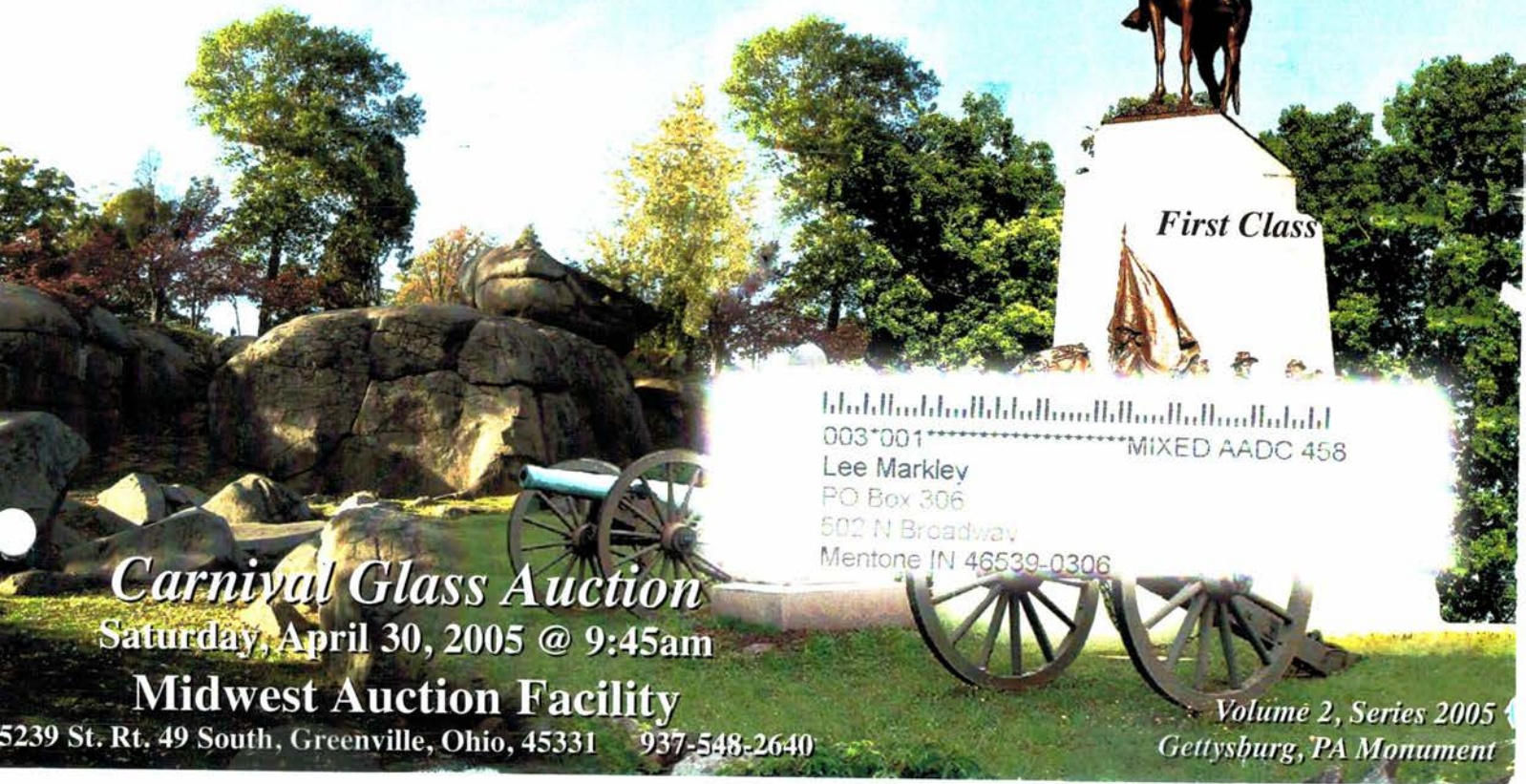




# Jim Wroda Auction Services

C/O Midwest Auctioneers & Realty, Inc.  
5239 St. Rt. 49 South  
Greenville, Ohio 45331  
www.jimwrodauction.com

Presorted  
First Class Mail  
U.S. Postage Paid  
Celina, Ohio  
Permit No. 99

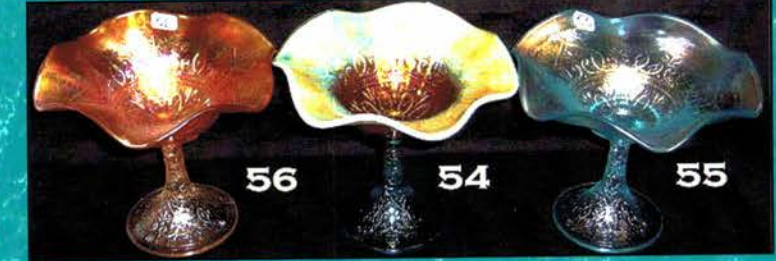
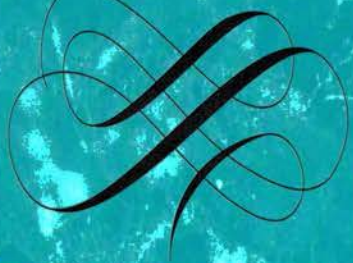
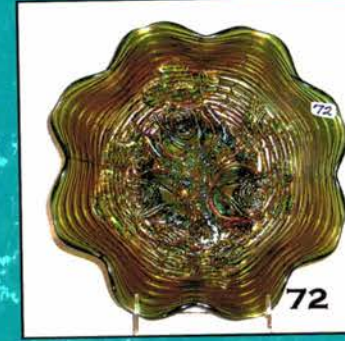
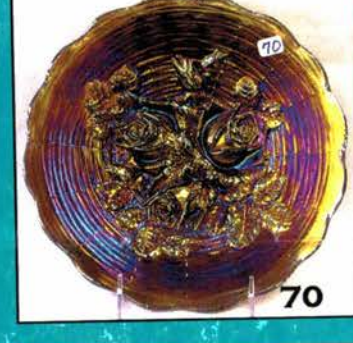


**Carnival Glass Auction**  
Saturday, April 30, 2005 @ 9:45am  
**Midwest Auction Facility**

5239 St. Rt. 49 South, Greenville, Ohio, 45331 937-548-2640

003\*001 MIXED AADC 458  
Lee Markley  
PO Box 306  
502 N Broadway  
Mentone IN 46539-0306

Volume 2, Series 2005  
Gettysburg, PA Monument



# Carnival Glass Auction

Saturday, April 30, 2005 9:45 a.m.

## Midwest Auction Facility

5239 St. Rt. 49 South, Greenville, OH 45331 937-548-2640

Preview: Friday-April 29<sup>th</sup> 10:00 a.m. to 4:00 p.m. and Saturday 8:00 a.m. till auction time

**Directions:** From I-70 westbound take the Rt. 49 N exit (24). Go approx. 25 miles North to Greenville, the Auction facility will be on your right at the intersection of Rt. 49 and Rt. 127. From I-70 eastbound take the Rt. 127 North exit. Go approx. 20 miles to Rt. 49 exit. Turn left and the auction facility will be on your right.

Approx. 30 miles from the Dayton International Airport, with easy directions to the facility.

On Saturday, April 30<sup>th</sup>, 2005 we will be selling for long time collector Reginald Clark. This a beautiful collection and very diverse. Definitely something for everyone. There are so many things in this collection we could have a elaborated on, but there is only so much room in a catalog!! Please go to the website to view over 175 items and you will see the quality this collection offers. Hope to see you in April! As always we will have donuts and coffee in the morning and lunch in the afternoon.

### \*\*\*IMPORTANT\*\*\*

\*\*\*\*\*Mail, E-mail, Phone and Absentee Bids Policy:\*\*\*\*\*

1. Phone inquiries on items of interest are welcome! 937-548-2640 or 937-447-8909 evening.
2. Bidders take full responsibility to honor any and all bids that are executed in your behalf.
3. All items to be paid for within 7 days of notification unless other arrangements are made prior to auction. Successful absentee bidders must also pay *estimated* shipping costs.
4. All items bid competitively against the audience. **We do not start with your bid.**
5. Items will be bid on in **perfect condition** with average to above average iridescence unless otherwise stated or noted on your order of sale list or absentee bid sheet. **We will describe each item as accurately as possible!! (see listing) Bids will not be carried out if a damage is found during auction.** If manufacture problems bother you such as air bubbles, pulled points, soda ash, tool marks, or any other manufacturing flaw, please be specific in your mail bids or email bids. *If there is a manufacture flaw on an item that we feel is truly distracting, we have noted that in the listing already. Auction Company has the right NOT to execute an absentee bid for any reason.*
6. All bids can be called in to: (937) 548-2640, faxed to 937-548-3492 or sent to 5239 St. Rt. 49 South, Greenville, OH 45331. You can also e-mail bids and ask questions directly from our website (Please Ask!)
7. **All mail, faxed, write-in, call in and email bids due by Friday, April 29, 2005 - 3:00p.m.**
8. **Anyone wishing to bid Live during the auction via telephone MUST have his or her request in by NOON on Wednesday April 27th,2005.**
9. If someone in the audience is bidding for you they must pay for the item(s) before leaving.

\*\*\*To view over 100 items go to: [www.jimwrodaauction.com](http://www.jimwrodaauction.com) \*\*\*

**Terms and Conditions of Auction:** Cash, Travelers checks, business or personal checks with proper I.D. We now have Visa/ MC and Discover with a 3% clerk fee. Ohio State Sales tax collected **All items being sold AS IS WHERE IS with NO MINIMUM and NO RESERVE!**

*Please use the preview times to look over your items of interest.*

**Hosting Hotel: Holiday Inn-Greenville** 937-548-1328 (special rate if you mention "Midwest Auctioneers")

*Other hotels: Comfort Inn – 937-316-5252 and Greenville Inn (Allows small pets!): 937-548-3613*

*We have a map available at the auction facility, with all restaurants and local areas of interest listed.*

*Jim Wroda Auction Services*

Jim Wroda and Mike Baker - Auctioneers

5239 St. Rt. 49 South, Greenville, Ohio 45331 Phone: (937)548-2640

E-mail: [jwrodamidwest@earthlink.net](mailto:jwrodamidwest@earthlink.net) or [lwrodamidwest@earthlink.net](mailto:lwrodamidwest@earthlink.net)



Rapid Printing, Greenville, Ohio — 937-548-1010

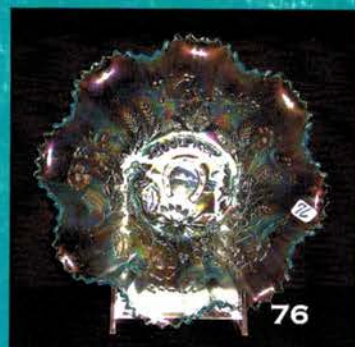


- 650
1. N-wood IB Memphis punch bowl & base. Base has chip, top has crack. Very Rare
  - 1A. N-wood IB Grape Arbor tumbler 300-475
  - 1B. N-wood IG Raspberry tumbler. Very Scarce
  2. Shriner's New Orleans 1910 loving cup
  3. IG Brocaded Palms 8 1/2" handled plate
  4. Australian 10" black amy. Kookaburra bowl. Very Scarce.
  5. Dugan 6" purple Ski Star ruffled bowl
  6. Dugan 6" purple Petal & Fan ruffled bowl.
  7. Imperial 8 1/2" red Wide Panel plate
  8. Imperial mari. Octagon wine decanter & 2 stems
  9. Dugan 6" mari. Persian Garden plate
  10. Dugan 9 1/2" frosty white Apple Blossom Twigs plate w/BW ext 1500
  11. Dugan 9" light amy. Apple Blossom Twigs plate w/BW ext.
  12. Dugan 8 1/2" PO Apple Blossom Twigs ruffled bowl w/plain ext.
  13. Dugan 8" PO Apple Blossom Twigs ruffled bowl w/BW ext.
  14. Dugan 7" purple Grapevine Lattice plate
  15. Dugan 7" white Grapevine Lattice plate
  16. Dugan 7" white Persian Garden plate w/Pool of Pearls ext.
  17. Dugan 8" purple Fanciful ICS bowl.
  18. Dugan 9" frosty white Fanciful plate
  19. Dugan 9" white Fanciful low ruffled bowl
  - 3500 20. DUGAN 10 1/2" PURPLE FARMYARD 6-RUFFLE BOWL. VERY NICE ELECTRIC HIGHLIGHTS
  - 2700 21. DUGAN PURPLE CHRISTMAS COMPOTE. TERRIFIC IRID. INSIDE AND OUT. DEFINITELY ONE OF THE BETTER ONES. RARE.
  22. Dugan 9 1/2" purple Cherries 8-ruffled bowl 2000
  - 1500 23. IMPERIAL 10 1/4" ELEC. PURPLE HATTIE CHOP PLATE. RARE.
  24. Imperial 9" elec. purple Cobblestones ruffled bowl
  25. Imperial 8" elec. purple Acanthus round bowl. Beautiful blue and gold irid.
  26. Imperial 7 1/2" purple Shell & Sand ruffled bowl. Super.
  27. Imperial elec. purple Open Rose Creamer
  28. Imperial elec. purple Scroll Embossed large compote 2500
  29. Imperial 17 1/2" elec. purple Morning Glory funeral vase. Has large chip on base.
  30. Imperial 12" purple Beaded Bulls Eye vase 900
  31. Imperial 8 1/2" purple Ripple vase 825
  32. Imperial 8 1/2" smoke Morning Glory vase.
  33. Imperial 10" light lavender Freefold vase. Very Scarce.
  34. Imperial Grape lavender compote. Very Scarce.
  35. Imperial 9" lavender Poppy ruffled bowl. Scarce,
  36. Imperial mari. 474 punch bowl and base
  37. Imperial 12" smoke Ripple vase.
  - 500 38. Imperial 13" amber Morning Glory funeral vase w/flared top. Getting real hard to find. 800
  39. Imperial 9" amber Open Rose plate. 1700
  40. Imperial 11" mari. Heavy Grape chop plate.
  41. Imperial mari. Poinsettia milk pitcher. Super.
  42. Imperial Grape mari. Wine decanter
  43. Imperial green Embossed Scroll small compote
  44. Imperial 9" green Pansy ruffled bowl
  45. Imperial 10 1/2" white Homestead chop plate
  46. (4) Imperial 5" purple Zippered Heart sauce dishes
  47. Imperial 6" green Imperial Grape plate
  48. Cambridge green Inverted Strawberry powder jar. Scarce.
  49. Cambridge mari. Inverted Strawberry powder jar. Scarce
  50. Cambridge green Buzz Saw large cruets with stopper. Scarce.
  51. N-WOOD 9" WHITE HEARTS & FLOWERS PLATE. GREAT COLOR ON A HARD TO FIND PLATE.
  52. N-WOOD 8 1/2" IG HEARTS & FLOWERS RUFFLED BOWL. BEAUTIFUL PASTEL IRID.
  53. N-WOOD 9" ELEC. BLUE HEARTS & FLOWERS PCE BOWL. ONE OF THE TOP ELECTRIC BLUE ONES OUT THERE! KILLER!
  54. N-wood AO Hearts & Flowers compote. Nice.
  55. N-wood IB Hearts & Flowers compote. Scarce.
  56. N-wood mari. Hearts & Flowers compote
  - 1150 57. N-WOOD 8 1/2" AQUA EMBROIDERED MUMS RUFFLED BOWL. VERY RARE BOWL.
  - 800 58. N-wood 8 1/2" purple Embroidered Mums ruffled bowl
  - 800 59. N-wood 8 1/2" IB Embroidered Mums ruffled bowl. Scarce. Very nice lookin bowl!
  60. N-wood elec. purple Singing Birds water pitcher. Outstanding!
  61. N-wood elec. purple Peacock at the Fountain large berry bowl
  62. N-WOOD 12 1/2" PURPLE TREE TRUNK FUNERAL VASE (ELEPHANT'S FOOT). THESE ARE GETTING REAL HARD TO FIND.
  63. N-wood 12" mari. Tree Trunk midsize vase.
  64. N-wood 13 1/2" purple Tree Trunk midsize vase
  65. N-wood 10" elec. blue Tree Trunk vase
  66. N-wood 11 1/4" green Tree Trunk vase
  67. N-wood 8 1/2" mari. Tree Trunk vase
  68. N-WOOD 9" GREEN ROSE SHOW PLATE. VERY NICE EXAMPLE OF A PLATE THAT'S GETTING VERY HARD TO FIND.
  69. N-wood 9" elec. blue Rose Show plate. Great example. Another Beauty!
  70. N-wood 9" purple Rose Show plate. Nice electric highlights.
  71. N-wood 9" white Rose Show plate. Super pastel irid.
  72. N-WOOD 9" GREEN ROSE SHOW BOWL. BEAUTIFUL BOWL. LOTS OF BLUE ON THE ROSES.
  73. N-wood 9" purple Rose Show bowl. Nice electric irid.
  74. N-wood 5 1/2" green Peacock at Urn sauce. Rare!
  75. N-wood 9" green Good Luck plate. Very scarce!
  76. N-WOOD 8 1/2" IB GOOD LUCK RUFFLED BOWL. A VERY RARE BOWL. VERY PASTEL!

77. N-wood 9" elec. blue Good Luck PCE bowl 700
78. N-wood 8 1/2" mari. Good Luck ruffled bowl. Great stretchy irid. Nick on one point. 600
79. N-wood 8 1/2" mari. Good Luck stippled ruffled bowl. Scarce. 2100
80. N-wood 7 1/2" green Strawberry hand grip plate
81. N-wood 7 1/2" green Fruits & Flowers hand grip plate
- 1350 82. FENTON 9" RED DRAGON & LOTUS 8-RUFFLED BOWL. ONE OF THE BEST RED DRAGON & LOTUS YOU'LL FIND. 650
83. Fenton 8" red Peacock & Grape spatula footed ruffled bowl. 900
84. Fenton white Orange Tree Orchard water pitcher 1700 <sup>2500</sup>
85. Fenton white Apple Tree 5 pc. water set.
86. Fenton white Floral & Grape water pitcher
- 1100 87. FENTON 7 1/2" BLUE ILLINOIS SOLDIERS AND SAILORS PLATE. BEAUTIFUL IRID!
- 2050 88. FENTON 7 1/2" DARK MARI. ILLINOIS SOLDIERS AND SAILORS PLATE. PRETTY! 500
89. Fenton 9" purple Dragon & Lotus 8-ruffle bowl
90. Fenton 8 1/2" green Dragon & Lotus 3/1 edge bowl. 2000
91. Fenton 8 1/2" teal Peacock & Grape 3/1 edge bowl.
92. Fenton 9" blue Orange Tree plate w/Trunk center
- 500 93. Fenton 9" dark mari. Orange Tree plate. Super! 1050
94. Fenton 9" frosty white Orange Tree plate.
95. Fenton 9" frosty white Orange Tree 6-ruffle bowl w/Trunk center 2200
96. Fenton 8 1/2" green Orange Tree 6-ruffle bowl w/Trunk center 1800
- 800 97. FENTON 9" AO VINTAGE 6-RUFFLE BOWL. VERY RARE. 2500
98. Fenton 9" blue Peacock at the Urn plate. One flute pushed down on top.
- 650 99. Fenton 9" mari. Peacock at the Urn plate. Outstanding! 2600
- 850 100. Fenton 19 1/4" blue Rustic funeral vase. Fantastic color pushing electric blue! Very nice!
- 2900 101. DUGAN 13" WHITE PERSIAN GARDEN CHOP PLATE. NOT MANY OF THESE AROUND. HERE'S YOUR CHANCE! BEAUTIFUL PASTEL IRID! 700
102. Dugan 6" PO Four flowers plate. Very heavy opal on a nice lookin' plate! 4600
103. Dugan 6" elec. purple Petal and Fan CRE plate. Killer color!
104. Dugan 6" Elec. Purple Wishbone and Spades plate. WOW! 1650
105. Eda 9" IG Four Flowers plate. Super bright pastel color 4300
- 1000 106. FENTON 6" PURPLE GEO. W. GETTS ICS BOWL. VERY RARE BOWL!
- 1300 107. FENTON 6" PURPLE GEO. W. GETTS PIANOS PLATE. VERY RARE PLATE WITH VERY NICE COLOR 2000
- 1700 108. FENTON 6" PURPLE GEVURTZ FURNITURE PLATE. ANOTHER RARE ADV. PLATE. 1700
109. Fenton 6" purple Ogden Furniture ruffled bowl. Very Scarce! Nice
110. Fenton 6" purple Utah Liquor 2 sides up plate. Rare plate! Nice
111. FENTON BLUE ATLANTIC CITY 1911 ELKS BELL. HAS NICE EVEN IRID. VERY HARD TO FIND!
112. Fenton 7" amy 1910 Detroit Elks ruffled bowl. Scarce
113. FENTON 7" BLUE 1911 ATLANTIC CITY ELKS PLATE. VERY MULTI-COLOR IRID
114. FENTON 7" BLUE 1914 PARKERSBURG ELKS PLATE. ABSOLUTELY BEAUTIFUL IRID. ONE OF THE BEST!
115. Fenton 7" Dark mari. Peacock & Dahlia plate. VERY RARE small plate! Nice 400-550
116. FENTON 7" IG LEAF CHAIN RUFFLED BOWL. VERY RARE COLOR! NICE! ONLY 4 OR 5 KNOWN.
117. FENTON 9" PURPLE BIRMINGHAM AGE HEARLD PLATE. VERY SCARCE. NICE LOOKIN' PLATE!
118. Fenton 8 1/2" purple Birmingham Age Herald ruffled bowl. Very scarce.
119. FENTON 9" FROSTY WHITE PERSIAN MEDALLION PLATE. SOLID PINK IRID! BEAUTIFUL AND RARE!
120. Fenton 9" pumpkin mari. Spector's Dept. store plate. Killer rich dark color
121. FENTON MARI PACIFIC COAST MAIL ORDER HOUSE G&C LOW RUFFLED FRUIT BOWL. SUPER DARK MARI. ONE OF JUST A COUPLE KNOWN. VERY RARE!
122. IMP. 10" ELEC. PURPLE HOMESTEAD CHOP PLATE. ONE OF THE BEST! WOW!
123. Imp. elec. purple Paperweight. Signed NuArt. Has a small repair on base from a chip. No big deal. 600-1000
124. IMPERIAL ELEC. PURPLE MIDSIZE OCTAGON WATER PITCHER. IMPERIAL AT IT'S ABSOLUTELY BEST! RARE!
125. M-BURG 8" PURPLE UNLETTERED COURTHOUSE ICS BOWL. SUPER RADIUM IRID ON A VERY RARE BOWL
126. M-burg mari. Ohio Star vase. Getting very hard to find! NICE! Radium!
127. M-BURG PURPLE CLEVELAND MEMORIAL ASHTRAY. RADIUM. DOES HAVE 1/4" AREA ON EDGE OF PEELING. WHO CARES!! (not a chip)
128. M-BURG PURPLE ELKS PAPERWEIGHT. SUPER RADIUM EXAMPLE. PERFECT
129. N-wood 19" custard w/nutmeg Tree Trunk Funeral vase w/plunger base. VERY RARE!
130. N-wood 6" purple Davidson's Chocolates double handgrip plate (2 sides up). Scarce 2500



75



76



77



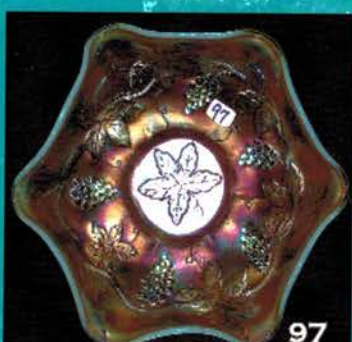
82



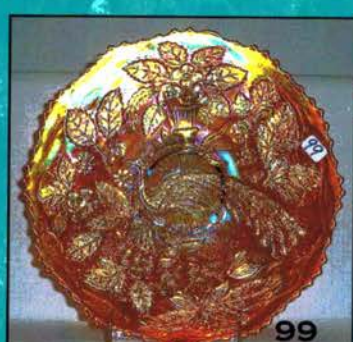
83



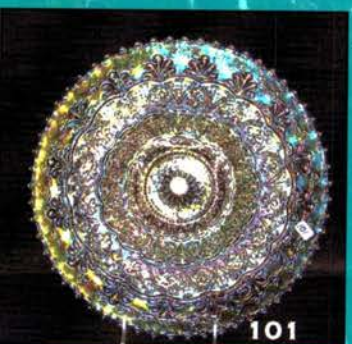
102



97



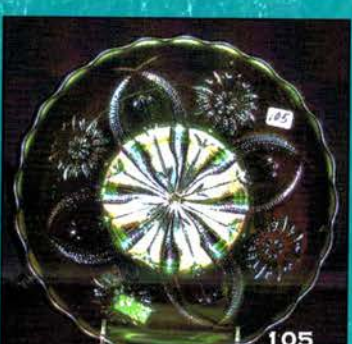
99



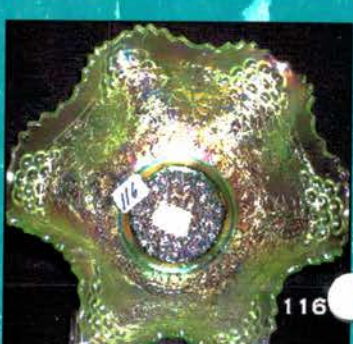
101



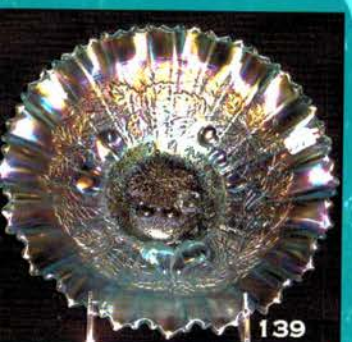
104



105



116



139



80



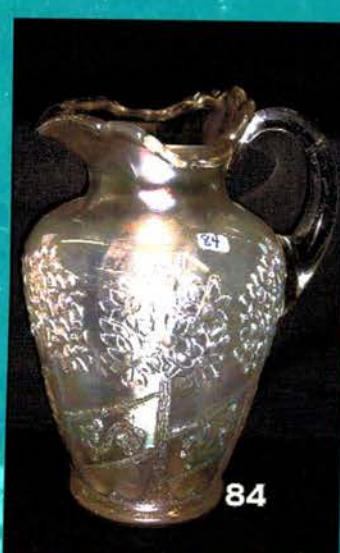
81



122



100



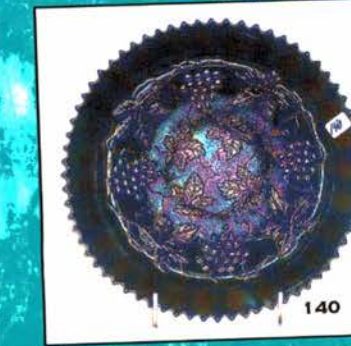
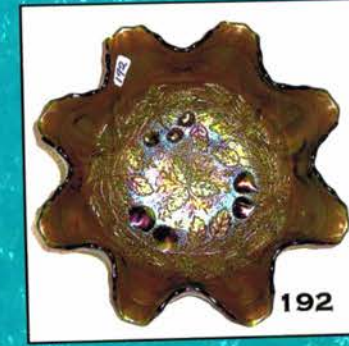
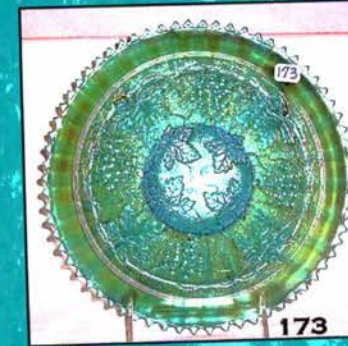
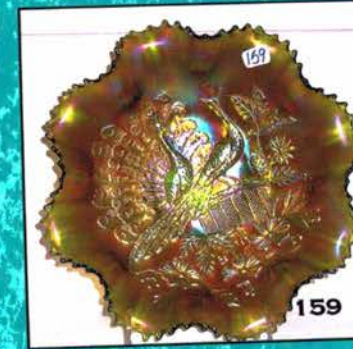
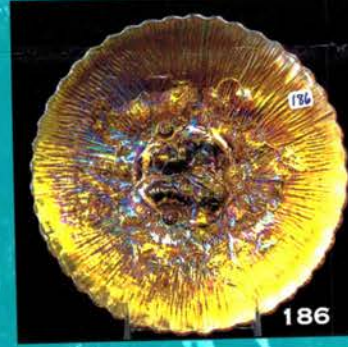
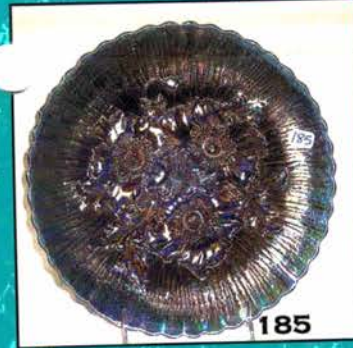
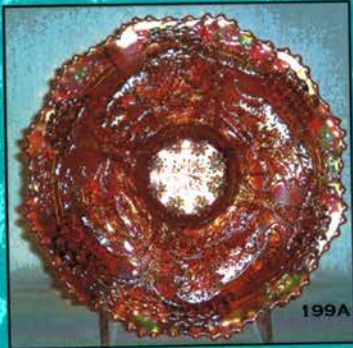
84



86



85



- 950 131. N-wood 6" purple Eagle furniture handgrip plate. Also very rare
- 1200 132. N-wood 6" purple Eagle furniture plate. RARE!
- 1600 133. N-wood 6" purple Fern Brands handgrip plate. Scarce
134. N-wood 8 1/2" Custard Three Fruits stippled Spatula ft'd bowl. Scarce
- 1200 135. N-WOOD 9" LIME GREEN HEARTS & FLOWERS PLATE. VERY SCARCE COLOR WITH SUPER PASTEL IRID.!
- 1200 136. N-WOOD 9" ELEC. PURPLE HEARTS & FLOWERS PLATE. OUTSTANDING ELEC. IRID. SUPER! I'M NOT SURE YOU'LL FIND A BETTER ONE!!
- 700 137. N-wood 8 1/2" dark mari. Hearts & Flowers PCE bowl. Very sweet example for this
- 8900 138. N-wood 8 1/2" IB Hearts & Flowers PCE bowl. Another killer piece of pastel Northwood!
- 850 139. N-WOOD 8 1/2" IB THREE FRUITS STIPPLED PCE BOWL. HOW RARE IS THIS??!! NOT MANY CHANCES TO OWN THIS BEAUTIFUL BOWL!
- 1200 140. N-wood 9" elec. blue G&C stippled plate. Very Rare plate w/ SUPER irid!
- 142 141. N-wood white 7 pc Oriental Poppy water set. Dark frosty irid. w/lots of pink. RARE!
- 850 142. N-wood White Grape Arbor tankard pitcher. Lot's of nice pink and blue irid.
- 1400 143. N-wood IB Grape Arbor tankard pitcher w/1 tumbler. Very nice frosty irid.
- 500 144. N-WOOD GREEN PEACOCK AT FOUNTAIN WATER PITCHER. SUPER NICE COLOR ON A VERY RARE PITCHER! (WANTS TO BE EMERALD)
- 1200 145. N-wood emerald GREEN Peacock at Fountain tumbler. KILLER IRID
- 700 146. N-wood white 7 pc. Peacock at Fountain water set. Beautiful frosty irid. Well matched!
- 1100 147. N-WOOD FROSTY WHITE G & C FERNERY. VERY SCARCE!
- 148A 148. N-WOOD IB G & C FERNERY. VERY RARE! NICE DARK COLOR W/SUPER PASTEL IRID.
- 850 148A N-wood mari. G & C fernery. Very scarce! Nice.
- 2600 149. N-wood white Raspberry Water pitcher. Very nice pastel multi-color irid. RARE!
150. IMPERIAL ELEC. PURPLE 7 PC. OPEN ROSE WATER SET. ABSOLUTELY PHENOMENAL SCREAMING ELEC. IRID. I DON'T THINK YOU'LL FIND ONE BETTER THAN THIS ONE. WOW WOW WOW!!!!
151. N-wood purple Peacock at the Fountain water pitcher. As close to electric as you'll find. No harm flake on bottom band.
152. N-wood mari. Peacock at the Fountain 7 pc. water set
- 725 152A N-wood elec. blue Peacock at the Fountain 7 pc. water set
- 152B Dugan blue Peacock at the Fountain 7 pc. water set.
- 500 153. N-wood purple Davidson's Society Chocolates 2-sides up plate.
- 1200 154. N-wood amy. Ballard ruffled bowl.
- 700 155. N-wood 9" green Peacocks plate. Rare.
156. N-wood 9" mari. Peacocks plate
157. N-wood 9" purple Peacocks plate. Beautiful elec. color!
158. N-wood 8 1/2" white Peacocks PCE bowl. Very scarce bowl.
- 625 159. N-wood 9" green Peacocks ruffled bowl. Beautiful almost emerald green. Very hard to find.
- 600 160. N-wood 8 1/2" AO Peacocks ruffled bowl. Tool mark on one ruffle. No big deal.
161. N-wood 8 1/2" white Peacocks ruffled bowl. Has bubble in top of pattern. Beautiful piece of white!
162. N-wood 9" purple Peacocks ruffled bowl. Very nice!
163. N-wood 8 1/2" mari. Peacocks PCE bowl.
164. Fenton 6" purple Paradise Soda advertising plate
165. Fenton 6" purple Garden Mums hand grip advertising plate
- 1200 166. N-WOOD PURPLE ACORN BURRS PUNCH BOWL AND BASE. BEAUTIFUL ELECTRIC HIGHLIGHTS THROUGHOUT.
- 575 167. N-wood purple Grape arbor 6 pc. water set.
168. N-wood mari. Grape arbor 7 pc. water set.
169. N-WOOD IG G & C CENTERPIECE BOWL. POINTS UP. RARE!
170. N-wood purple G & C centerpiece bowl. Points in
171. N-wood mari. G & C centerpiece bowl. Points in.
172. N-wood blue Peacock at the Fountain fruit bowl.
- 3600 173. N-WOOD 9" SAPPHIRE BLUE G & C STIPPLED PLATE W/RIB BACK. WHAT AN ABSOLUTELY BEAUTIFUL N-WOOD RARITY!!!
174. N-wood 9" purple G & C plate w/plain back
175. N-wood 9" green G & C plate
176. N-WOOD 8 1/2" LIME ICE GREEN G & C STIPPLED PCE BOWL. VERY RARE. ONLY ONE WE KNOW OF. VERY NICE PASTEL IRID.
177. N 8 1/2" amy. G & C PCE stippled ruffled bowl. Rare!
178. N-wood 8 1/2" green G & C PCE bowl
179. N-wood 8 1/2" green G & C stippled ruffled bowl. Very scarce.
180. N-wood 8 1/2" purple G & C ruffled bowl
181. N-wood 7 1/2" purple G & C plate
182. N-wood green G & C water pitcher
183. N-wood 10 1/2" green G & C large ICS bowl
184. N-wood 10 1/2" white G & C large ICS bowl
- 1100 185. N-WOOD 9 1/2" BLUE POPPY SHOW PLATE. MULTICOLOR IRID. THROUGHOUT. NEAT PLATE.
- 950 186. N-wood 9 1/2" mari. Poppy Show plate. WOW!!!
- 700 187. N-wood 9 1/2" purple Poppy Show plate. Very scarce.
188. N-wood 8 1/2" white Poppy Show ruffled bowl



189. N-wood 9" purple Three Fruits stippled plate
190. N-wood 9" green Three Fruits plate
191. N-wood 8 1/2" green Three Fruits PCE bowl
192. N-wood 8" emerald green Three Fruits Medallion stippled spatula footed bowl. Beautiful blue irid. In center.
193. N-wood 8 1/2" AO Three Fruits Medallion stippled spatula footed bowl. Scarce.
194. N-wood 8 1/2" purple Three Fruits Medallion spatula footed bowl
195. N-wood 8 1/2" green Three Fruits Medallion spatula footed bowl
196. N-wood 8 1/2" white Three Fruits Medallion dome footed bowl
197. N-wood 7 1/2" IG Fruits & Flowers ruffled bowl. Scarce!
198. N-wood white Peacock at Fountain compote
199. N-wood purple G & C sweetmeat
- 750 199A FENTON 7" MARI. LIONS FLAT PLATE. SUPER PRESSING AND GREAT COLOR. VERY HARD TO FIND.
- 6900 199B M-BURG 9" VASELINE FLEUR-DE-LIS DOME FOOTED BOWL. COUPLE OF NICKS ON TOES. VERY COMMON FOR THIS BUT NOTHING COMMON ABOUT THE ONE KNOWN BOWL. SUPER BRILLIANT BLUE IRID. TRUE VASELINE!
- 1800 200. M-BURG GREEN HOBSTAR & FEATHER GIANT COMPOTE. TINY TINY TINY NICK ON TOE. VERY RARE!
- 675 201. M-burg 9 1/2" green Many Stars ruffled bowl. Scarce.
202. M-burg 12" purple Bullseye and Loop vase.
- 2400 203. M-BURG GREEN HANGING CHERRIES COMPOTE. BEAUTIFUL RADIUM IRID. A KEEPER!
204. M-burg 6" green Peacock at the Urn sauce. No bee, no bead. Very rare size. Radium.
205. M-burg purple Isaac Benesch & Sons advertising bowl
206. M-burg mari. Swirled Hobnail rose bowl. Scarce.
207. M-burg 7 1/2" green Little Stars ruffled bowl
- 750 208. M-burg purple Strawberry Wreath compote
209. M-burg 10" purple Swirled Hobnail vase.
- 650 210. Fenton blue Orange Tree Orchard 6 pc. water set.
211. Fenton blue Lattice & Grape water pitcher. Scarce.
212. Fenton mari. Blueberry water pitcher. Scarce.
213. N-wood purple G & C small fruit bowl
214. N-wood blue G & C small fruit bowl.
215. Fenton 9 3/4" purple Fine Rib vase
216. Fenton 10 1/2" amber Fine Rib vase
217. Fenton 9 3/4" vaseline Flute vase
218. Fenton 8" blue Butterfly & Berry vase
219. Fenton aqua/powder blue Peacock at the Urn ruffled compote
220. Fenton blue Peacock at the Urn ruffled Compote
221. Fenton white Captive Rose compote
222. Fenton blue Orange Tree hat pin holder
223. Fenton blue Orange Tree loving cup
224. Fenton mari. Mikado compote
225. Fenton purple Holly small ruffled compote
226. Fenton green Holly small ruffled compote
227. Fenton blue Holly small goblet shape compote
228. Fenton 9" mari. Coral ruffled bowl. Scarce.
229. Fenton 9" dark green Holly plate. This plate has a very odd dark dark base color. We talked about for an hour and dark green is the best we got. You tell us what you think!
230. Fenton 9" dark mari. Holly plate
231. Fenton 9" purple Three Fruits plate
232. Fenton 9" green Three Fruits plate
233. Fenton 9" mari. Three Fruits plate
234. Fenton 10 1/2" blue Persian Medallion chop plate
235. Fenton 9" blue Persian Medallion plate. Very nice.
236. Fenton 6" blue Persian Medallion plate.
237. Fenton 9" blue Persian Medallion ruffled bowl
238. Fenton 8" green Persian Medallion ICS bowl
239. Fenton 9 1/4" blue Fentonia large footed berry bowl.
240. Fenton 5" purple Panther sauce dish. Rare.
241. Fenton 5" green Butterfly & Berry sauce dish. Rare.
242. Fenton 5" mari. Panther sauce dish
243. Fenton blue Horse Head Medallion footed nut bowl
244. Fenton blue Horse Head Medallion footed JIP bowl
245. Fenton green Horse Head Medallion footed ruffled bowl
246. Fenton vaseline Horse Head Medallion rose bowl
247. Fenton 8" mari. Horse Head Medallion plate
248. Fenton amy. 9" Heart & Vine ruffled bowl
249. Fenton blue Butterfly Berry large footed berry bowl
250. Fenton 10" blue Little Fishes footed ICS bowl. Not many around anymore.
251. Fenton 9 1/2" mari. Little Fishes footed ruffled bowl.
252. Fenton 7 1/2" green Acorns ruffled bowl
253. Fenton 9" white Cherry Chain ICS bowl
254. Fenton 7" aqua Leaf Chain ICS bowl
255. Fenton 8" blue Leaf Chain plate
256. Fenton 9" ginger ale Leaf Chain plate. Scarce.
257. Fenton cherry red Holly hat. Super!
258. Fenton 9" purple Peacock at Urn 8-ruffle bowl
259. Fenton 9" blue Peacock at Urn 8-ruffle bowl.
260. N-wood 9" mari. Wishbone tri-corner footed plate. Very scarce plate. Has small manufacture irid. Split on edge.
261. N-wood 8" blue Wishbone footed ruffled bowl. Very nice.
262. N-wood 8" purple Wishbone footed ruffled bowl. Nice electric color.
263. N-wood mari. Acorn Burrs large berry bowl
264. N-wood mari. Acorn Burrs Butter Dish
265. N-wood purple G & C covered powder jar 150
266. N-wood AO round Bushel Basket. Fair amount of opal. Nice.
267. N-wood IG round Bushel Basket
268. N-wood white 8-sided Bushel Basket.
269. N-wood mari. Dandelion mug. Pretty!

- \_\_\_\_\_ 270. N-wood 8 ½" purple Poinsettia & Lattice footed bowl. Scarce.  
 \_\_\_\_\_ 271. N-wood purple Fern stemmed compote. Scarce.  
 \_\_\_\_\_ 272. N-wood mari. Fern stemmed compote. Scarce.  
 \_\_\_\_\_ 273. N-wood purple Blackberry stemmed compote.  
 \_\_\_\_\_ 274. N-wood mari. Blossom Time stemmed compote.  
 \_\_\_\_\_ 275. N-wood 8 ½" mari. Greek Key PCE bowl. Very scarce.  
 \_\_\_\_\_ 276. N-wood purple Raspberry milk pitcher. Beautiful electric color.  
 \_\_\_\_\_ 277. N-wood green Raspberry milk pitcher. Lots of blue highlights.  
 \_\_\_\_\_ 278. N-wood mari. G & C large stemmed compote. Scarce.  
 \_\_\_\_\_ 279. N-wood green G & C hatpin holder. Feet look OK.  
 \_\_\_\_\_ 280. N-wood 7" mari. Drapery vase.  
 \_\_\_\_\_ 281. N-wood 7" purple Diamond Points vase  
 \_\_\_\_\_ 282. N-wood 7" blue Diamond Points vase. Nice elec. highlights.  
 \_\_\_\_\_ 283. N-wood 7" elec. blue Four Pillars vase. Scarce.  
 \_\_\_\_\_ 284. N-wood AO Beaded Cable rosebowl. Tiny nick on toe.  
 \_\_\_\_\_ 285. N-wood purple Drapery rosebowl.  
 \_\_\_\_\_ 286. N-wood mari. Drapery rosebowl.  
 \_\_\_\_\_ 287. N-wood white Drapery candy dish. Nice!  
 \_\_\_\_\_ 288. N-wood radium purple Drapery candy dish.  
 \_\_\_\_\_ 289. N-wood frosty white Daisy & Drape vase. Nice.  
 \_\_\_\_\_ 290. N-wood green Fine Cut & Roses rosebowl.  
 \_\_\_\_\_ 291. N-wood 6" light amy. G & C handgrip plate. Super color.  
 \_\_\_\_\_ 292. N-wood 6" dark mari. G & C handgrip plate. Scarce.  
 \_\_\_\_\_ 293. N-wood 8 ½" mari. Three Fruits PCE bowl w/BW ext.  
 \_\_\_\_\_ 294. N-wood 8 ½" pastel mari. Three Fruits ruffled bowl w/plain back.  
 \_\_\_\_\_ 295. N-wood 9" mari. Strawberry plate w/plain back. Very Nice.  
 \_\_\_\_\_ 296. N-wood 8 ½" green Strawberry PCE bowl w/BW ext.  
 \_\_\_\_\_ 297. N-wood 8 ½" green Strawberry PCE bowl w/BW ext.  
 \_\_\_\_\_ 298. N-wood 8 ½" purple Strawberry ruffled bowl w/plain back. Nice electric colors.  
 \_\_\_\_\_ 299. West. 8" blue opal Corinth JIP vase. Scarce.  
 \_\_\_\_\_ 300. West. 8" amber Corinth JIP vase.  
 \_\_\_\_\_ 301. West. 8" light mari. Corinth JIP vase.  
 \_\_\_\_\_ 302. Dugan 6" mari Nautilus vase. Scarce.  
 \_\_\_\_\_ 303. Dugan 7" purple Lined Lattice vase.  
 \_\_\_\_\_ 304. Dugan 10" white Big Basketweave vase.  
 \_\_\_\_\_ 305. Dugan 8" purple Lattice & Points vase.  
 \_\_\_\_\_ 306. Dugan 8" white Lattice & Points vase.  
 \_\_\_\_\_ 307. Dugan 8 ½" mari. Brooklyn Bridge ruffled bowl. Scarce  
 \_\_\_\_\_ 308. Contemporary amber Imperial Grape 15 pc. punch set.  
 \_\_\_\_\_ 309. U.S. Glass mari. Palm Beach rosebowl. Scarce.  
 \_\_\_\_\_ 310. (6) Dugan white Wreathed Cherry small banana boats with gold trim. 6 times money.  
 \_\_\_\_\_ 311. Dugan 6" elec. purple Honey Comb & Beads CRE plate.  
 \_\_\_\_\_ 312. Fenton 7" mari. Vintage plate.  
 \_\_\_\_\_ 313. Dugan 6" PO Cherries CRE plate.  
 \_\_\_\_\_ 314. Fenton 8 ½" pastel mari. Captive Rose 3/1 edge bowl. Nice!  
 \_\_\_\_\_ 315. N-wood mari. G & C Cologne bottle.  
 \_\_\_\_\_ 316. N-wood purple Springtime creamer & spooner. Choice.  
 \_\_\_\_\_ 317. Fenton mari. Kittens 4 ruffle toothpick  
 \_\_\_\_\_ 318. Fenton purple Orange Tree mug  
 \_\_\_\_\_ 319. Fenton 6" blue Pinecone plate  
 \_\_\_\_\_ 320. Fenton 10" white Rustic vase.  
 \_\_\_\_\_ 321. Fenton blue Persian Medallion large compote w/CRE.  
 \_\_\_\_\_ 322. Fenton blue Persian Medallion small compote  
 \_\_\_\_\_ 323. Dugan white Cherry Wreath spooner w/painted cherries.  
 \_\_\_\_\_ 324. (2) hatpins Choice. Six Plums & green Sphere  
 \_\_\_\_\_ 325. Fenton mari. Persian Medallion hair receiver & rosebowl. Selling Choice.  
 \_\_\_\_\_ 326. West. 6 ½" amy. Scales plate.  
 \_\_\_\_\_ 327. Dugan 8 ½" white Round Up ruffled bowl. Chip on edge.  
 \_\_\_\_\_ 328. Dugan 8 ½" PO Round Up ruffled bowl.  
 \_\_\_\_\_ 329. Fenton 9" mari. Three Fruits plate.  
 \_\_\_\_\_ 330. M-burg 9" purple Whirling Leaves ruffled bowl. Radium. Very Nice.  
 \_\_\_\_\_ 331. Imperial smoke Double Scroll console set w/candlesticks  
 \_\_\_\_\_ 332. Fenton 7" green Stippled Rays ruffled bowl  
 \_\_\_\_\_ 333. Fenton 9" clambroth Leaf Chain plate. Scarce.  
 \_\_\_\_\_ 334. Fenton 9" lime green Dragon & Lotus ruffled bowl. Odd color!  
 \_\_\_\_\_ 335. Imperial 9" clambroth Frosted Block plate. Signed Made in USA  
 \_\_\_\_\_ 336. N-wood 8 ½" elec. purple Greek Key ruffled bowl. Beautiful!  
 \_\_\_\_\_ 337. Imperial 9" green Open Rose plate. Silvery.  
 \_\_\_\_\_ 338. Fenton 9" blue Holly 3/1 edge bowl.  
 \_\_\_\_\_ 339. Blue Stretch glass squatty candlesticks.  
 \_\_\_\_\_ 340. M-burg 10" purple Rosalind ruffled bowl. Scarce.  
 \_\_\_\_\_ 341. Fenton 9" clambroth Holly plate. Mfg. scuffing on one point.  
 \_\_\_\_\_ 342. Fenton 9" white Leaf Chain plate. Internal fracture by stone in the glass.  
 \_\_\_\_\_ 343. Imperial 9" green Star of David bowl. Silvery.  
 \_\_\_\_\_ 344. Fenton 9 ½" purple Smooth Rays 3/1 edge bowl. Large chip.  
 \_\_\_\_\_ 345. N-wood 8 ½" green G & C Variant ruffled bowl w/BW back. Nice.  
 \_\_\_\_\_ 346. West. 7" PO Pillow & Sunburst bowl  
 \_\_\_\_\_ 347. Imperial 10" mari. Beaded Bulls Eye vase.

Thanks for participating in today's auction! Please watch our website for continual updates. You still have time to book your auction for 2005! Give us a call!!!



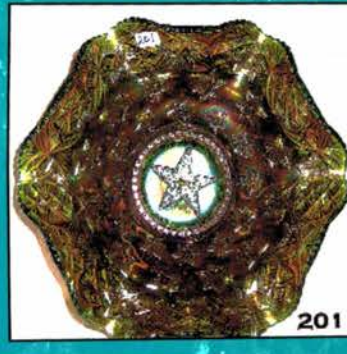
125



127



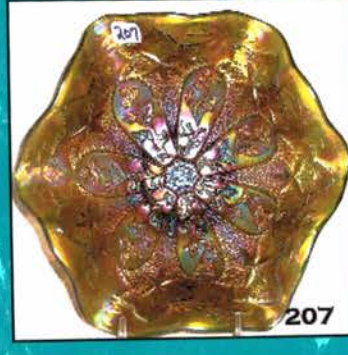
204



201



205



207



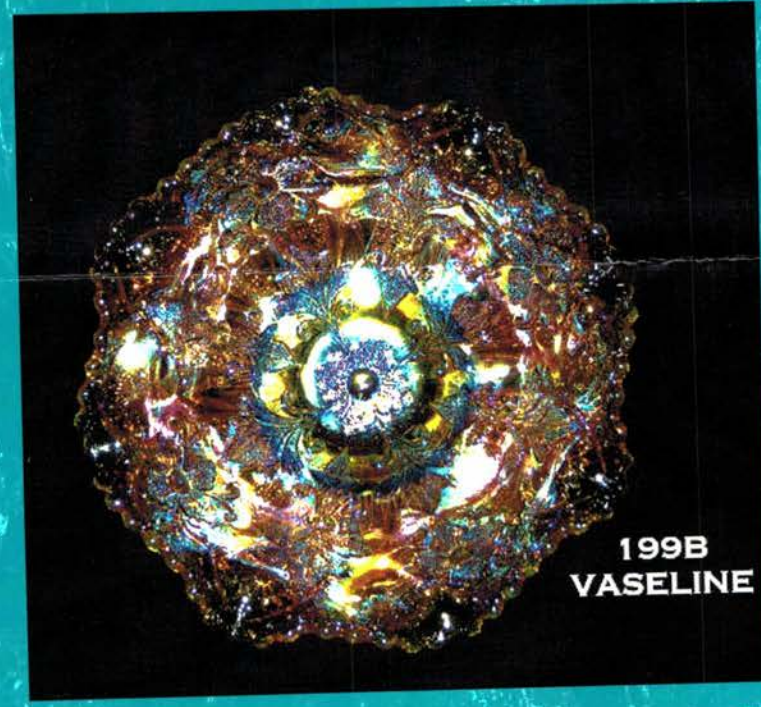
203



330



126



199B  
VASELINE



128



200



93



202

209

