

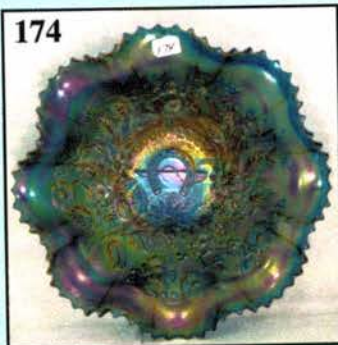
CARNIVAL GLASS AUCTION

Saturday, March 26, 2005 • 9:00 a.m. C.S.T.

HUDSON-DOUGLAS COLLECTIONS
NEW JERSEY AND NEW YORK
QUALITY, RARITY AND IRIDESCENCE



250



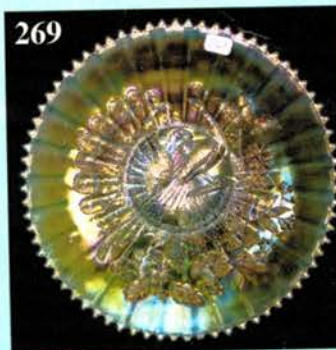
174



266



265



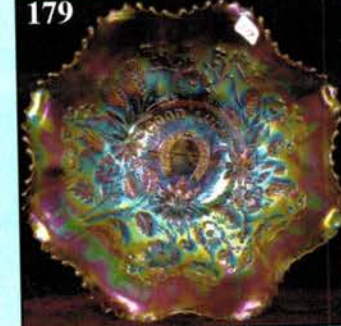
269



90



350



179



135



9



12



136



215

214

212

Held By the Mickey Reichel Antique & Auction L.C.
in the Mid-West, Heart of America's Antique and Carnival Glass Auction Gallery
Office: 660-882-5292 • Home: 660-882-5283
WEB SITE: www.AWK-SHN.com E-mail: mreichel@AWK-SHN.com

Held Inside the Mickey Reichel Auction Center

1 Mile North of I-70 on Hwy. 5, Exit 101, Boonville, Missouri • 20 Miles West of Columbia, MO on I-70
Preview Friday 12 p.m. - 5 p.m. and 7:30 a.m. - 9:00 a.m. Day of Auction



TERMS: Cash or Good Check, VISA and MasterCard accepted.



3% Clerking Fee on all purchases except for payment of cash or check. Proper I.D. required.

WEB SITE: www.AWK-SHN.com

ABSENTEE BID POLICY:

WRITE IN BIDS: If you are unable to attend the auction, we will be happy to accept absentee bids which must be received by THURSDAY, MARCH 24, 2005. Don't Delay. E-Mail: mreichel@AWK.SHN.com

FOR AUCTION PRICE RESULTS: Send \$3.00 and Large S.A.S.E. to 18350 Hunters Ridge Ct., Boonville, MO 65233-2971

PLEASE NOTE: There is a **\$5 handling charge for each successful bid which will be added to the selling price** for all write-in bids. This is in addition to the cost of postage, insurance and packing. Your write-in bid will be entered just as if you are present and bidding. **Successful bidders will be notified in 1 to 3 days by the auctioneer (so be sure to include your phone number).** Direct mail bids to Auctioneer **Mickey Reichel, 18350 Hunters Ridge Ct., Boonville, MO 65233-2971.** Terms: Cash or Check accepted with proper I.D. and Social Security Number and References. Announcements made day of the auction supercede all printed material. Not Responsible for Accidents or Sold Items.

No return on any items once they leave the Auction Center (No Exceptions).****

Call for additional information: 660-882-5292 days or 660-882-5283 evenings before 9:00 p.m.

FAX: 660-882-5292 (evening hours start FAX transmission after beep)

MAIL BIDS: Items are bid on in perfect condition with average or above iridescence OR as listed in the brochures. Bids will not be carried out when damage on an item has been found during the auction.

PEOPLE PRESENT AT AUCTION ARE RESPONSIBLE FOR FINDING ANY PINHEADS, WEAR, SPOTTINESS, MANUFACTURER'S DEFECTS OR ANY OTHER MINOR FLAWS, ETC. *****

NOTE: Read each line, as we have accentuated the type of no particular piece, all are special.

Make Reservations EARLY at one of these local motels:

Days Inn: 660-882-8624 • Comfort Inn: 660-882-5317 • Super 8: 660-882-2900 • Holiday Inn: 660-882-6882

Auction Consists of Rarity, Great Irid. and Variety

THANK YOU FOR ATTENDING TODAY

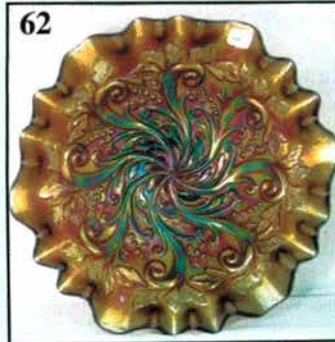
- | | |
|---|--|
| _____ 1. Clear Base-Imp Ripple 9" Vase-Marigold overlay | _____ 11. Near Olive G-Imp Loganberry Vase-Unusual color and pretty |
| _____ 2. G-Imp Ripple 10 1/4" mid-size Funeral Vase-6" opening, distinct limeish tint to glass | _____ 12. P-Imp Thumbprint and Ovals 5 3/8" Vase--Superb Imperial Electric |
| _____ 3. Teal-Imp Ripple 11 3/4" Vase-4 1/2" opening | _____ 13. Moonstone-Dugan Wide Rib 10" Vase-Marigold overlay |
| _____ 4. Super Smoke-Imp Ripple 12 1/2" Vase-5" opening | _____ 14. BA-Dugan Lined Lattice squatty 5 3/4" Vase-6" flared opening, great electric |
| _____ 5. P-Imp Ripple 12 3/8" Vase-Multi electric | _____ 15. BA-Dugan Lined Lattice 10 1/4" Vase-Also electric |
| _____ 6. P-Imp Beaded Bullseye 12 1/4" Vase-Electric highlights | _____ 16. B-Fenton Fine Rib 15 1/2" Vase-Nice one |
| _____ 7. Radium M-Imp Beaded Bullseye 11 1/4" Vase-Great color | _____ 17. Scarce Amber-Fenton Fine Rib 12 1/4" Vase |
| _____ 8. P-Imp Ripple 19" Funeral Vase-4 5/8" base, 6" opening-Electric tints | _____ 18. Rare AO-Fenton Fine Rib 10" Vase-Few known |
| _____ 9. M-Imp Ripple 15 1/4" Funeral Vase-Super giant 8 1/2" fanned out opening-wonderful item | _____ 19. M-Fenton Fine Rib 9 1/4" Vase-Pretty |
| _____ 10. P-Imp Morning Glory 12" Funeral Vase-5" base, awesome 9 1/2" opening with Tiffany/art glass type finish and iridescence | _____ 20. Cherry Red-Fenton Fine Rib 9 1/2" Vase |
| | _____ 21. Red Amberina-Fenton Fine Rib 9 1/2" Vase |
| | _____ 22. Red Reverse Amberina-Fenton Fine Rib 11 3/4" Vase |
| | _____ 23. Powder Blue Base-Fenton Fine Rib 10 1/2" Vase-Marigold overlay |



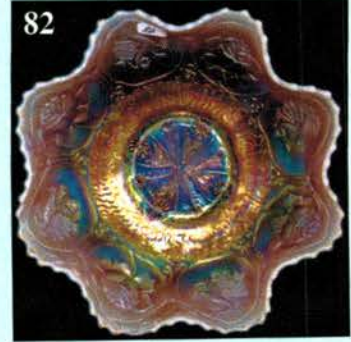
270



63



62



82



254



293



282

280



80



301



287

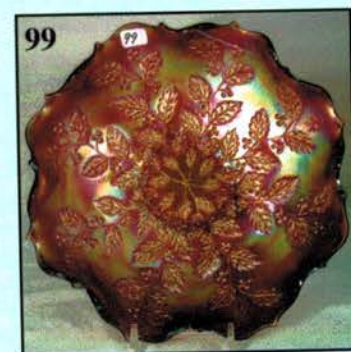
290



152



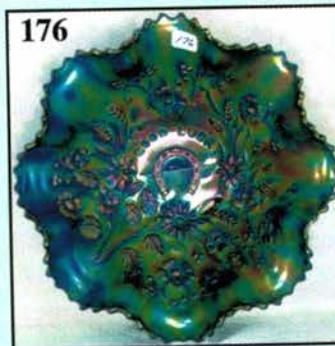
64



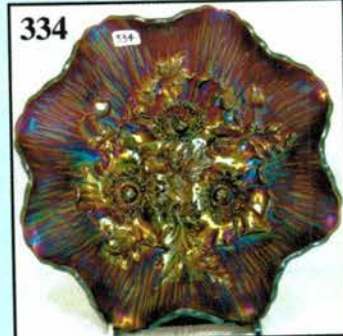
99



126



176



334



218

217



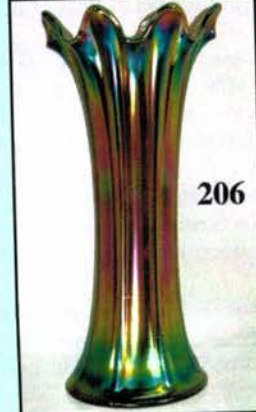
16



15



216



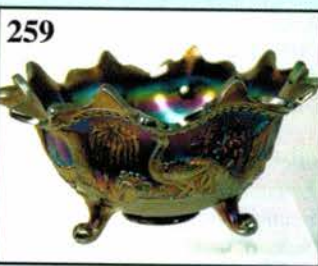
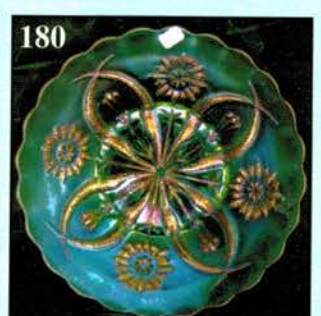
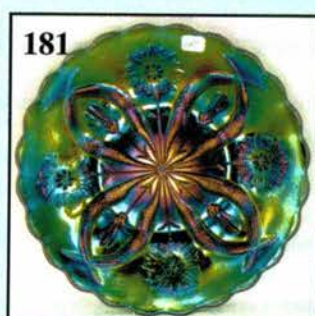
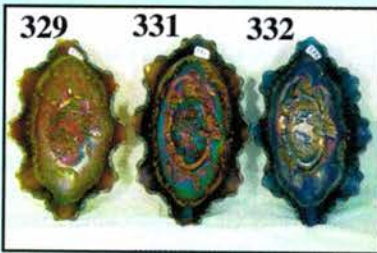
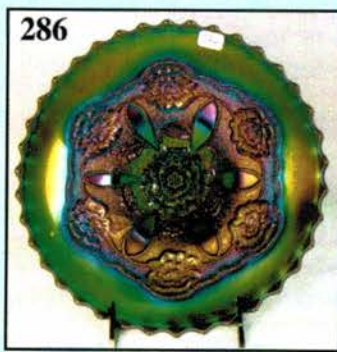
206

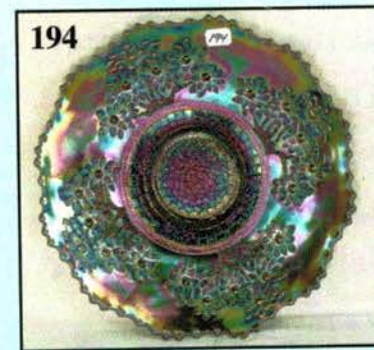
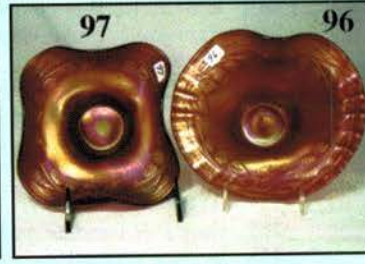
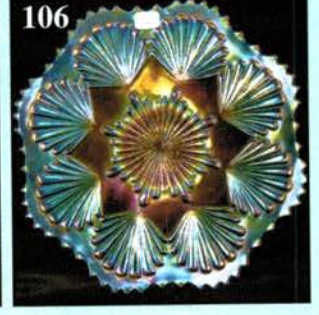
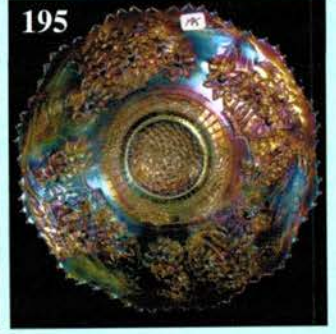
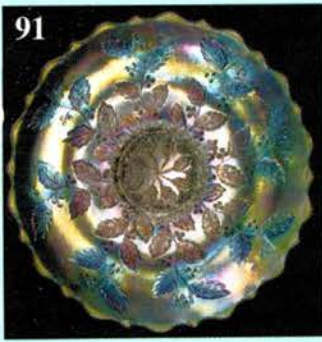


213

- _____ 24. Sapphire-Fenton Fine Rib 9 1/2" Vase-Great example and it looks sapphire
- _____ 25. Teal Green-Fenton Fine Rib 10 1/4" Vase-Emerald tints
- _____ 26. Nice B-Fenton Butterfly and Berry 9 1/2" Vase
- _____ 27. RED-Fenton Butterfly and Berry 9 1/2" Vase-So scarce and so pretty
- _____ 28. RED-Fenton Butterfly and Berry 9 1/4" Vase-Radium multi-color iridescence
- _____ 29. Helios G-Imp Lustre Rose Tumblers, ribbed interior-5 x \$
- _____ 30. Rare Aqua-Imp Lustre Rose Water Pitcher, ribbed interior
- _____ 31. Clambroth-Imp Lustre Rose Water Pitcher and 5 matching tumblers
- _____ 32. Radium M-Fenton Butterfly and Fern Water Pitcher-Lots of pinks
- _____ 33. M-Fenton Butterfly and Fern Tumblers-3 x \$
- _____ 34. P-N Oriental Poppy Tankard Water Pitcher and 6 tumblers-Factory flaws on top rim, still a beautiful pitcher
- _____ 35. Scarce G-Cambridge Inverted Strawberry Tumbler-Mkd Near Cut
- _____ 36. M-Buzz Saw and File Water Pitcher
- _____ 37. M-Buzz Saw and File Tumbler
- _____ 38. M-Buzz Saw and File Goblet-tough piece to find
- _____ 39. M-Rising Sun pedestal Water Pitcher
- _____ 40. M-Rising Sun Tumbler
- _____ 41. M-Diamond and Daisy Cut Tumbler
- _____ 42. Scarce M-Diamond Cut Shields Tumbler
- _____ 43. B-Grand Thistle Tumbler-chip on base
- _____ 44. Rare M-Piccardo Band of Roses Goblet-Mkd Industria Argentina/Piccardo
- _____ 45. M-Imp 474 Water Pitcher-Scarce item
- _____ 46. Peacock Smoke-Imp #678 Water Pitcher-Mkd IG-Wonderful iridescence
- _____ 47. Radium B-Fenton Paneled Dandelion Water Pitcher-Internal fracture
- _____ 48. Great A-Fenton Fluffy Peacock Water Pitcher and 5 average tumblers
- _____ 49. P-N Grape and Cable Tankard Water Pitcher-High demand item
- _____ 50. P-Dugan Heavy Iris Tankard Water Pitcher and 6 tumblers-Fantastic set
- _____ 51. P-N Raspberry Milk Pitcher-Fine example
- _____ 52. P-Imp Grape Water Pitcher-Electric top to bottom
- _____ 53. B-N Peacock at Fountain Water Pitcher
- _____ 54. B-Dugan Peacock at Fountain Tumblers-4 x \$
- _____ 55. Rich M-N Peacock at Fountain Water Pitcher and 5 tumblers-well matched
- _____ 56. M-Fenton Lattice and Grape Tankard Water Pitcher and 6 tumblers
- _____ 57. G-N Singing Birds Water Pitcher and 4 tumblers-Interior fracture in pitcher
- _____ 58. Lav-Mlbg Diamonds Water Pitcher-Typical base peeling
- _____ 59. Radium G-Mlbg Diamonds Tumblers-All nice, I'd want all 3!-Choice A, B, or C
- _____ 60. M-Mlbg Blackberry Wreath 8 3/4", 3 in 1 edge bowl-Pretty satin
- _____ 60A. P-Mlbg Swirled Hobnail Rosebowl
- _____ 61. Soft M-Mlbg Seaweed 9 3/4", ICS bowl
- _____ 62. P-Mlbg Seaweed 10 1/4", 3 in 1 edge bowl-Multi color irid.
- _____ 63. G-Mlbg Fleur De Lis 9 1/4", dome base, ICS bowl-Scarce shape
- _____ 64. M-Mlbg Many Stars 9 1/2", 3 in 1 edge bowl-Radium, with 6 point star
- _____ 65. P-Mlbg Primrose 9 1/4", 6 ruffle bowl-Splendid radium finish
- _____ 66. P-Mlbg Boutonniere ruffled Compote-Radium
- _____ 67. B-Fenton Garland Rosebowl
- _____ 68A. Outstanding Red-Fenton 6" 2-Row, Open Edge Basket, two sides up-About as pretty as you will ever see
- _____ 68. Sapphire Base-Fenton 2-Row, Open Edge JIP Basket-Scarce
- _____ 69. B-Fenton 2-Row, Open Edge JIP Basket-Beautiful
- _____ 70. G-Fenton 2-Row, Open Edge JIP Basket-Tough color to find
- _____ 71. Red-Fenton 2-Row, Open Edge JIP Basket-Great shape
- _____ 72. M-Fenton 2-Row, Open Edge JIP Basket-Neat
- _____ 73. Scarce B-Fenton Grape and Cable ball ftd, ruffled bowl
- _____ 74. B-Fenton Ribbon Tie 7 1/2", tight CRE bowl
- _____ 75. Clambroth-Fenton Leaf Chain 8", ICS bowl
- _____ 76. G-Fenton Peacock Tail 7" ruffled bowl-Horlacher advertising on base
- _____ 77. Scarce B-Fenton Persian Medallion Rosebowl
- _____ 78. B-Fenton's Flowers Rosebowl-Not often seen and nice
- _____ 79. M-Fenton Vintage (Grape) 7 1/2" flat plate-Blues and pinks
- _____ 80. AO-Fenton Blackberry Spray 6" ruffled hat-Rare and beautiful
- _____ 81. Scarce Amber-Fenton Dragon and Lotus 9", ruffled, collar base bowl
- _____ 82. Pastel PO-Fenton Dragon and Lotus 8 1/2", ruffled, collar base bowl-Superb pastel irid.
- _____ 83. Great G-Fenton Dragon and Lotus 8 3/4", ruffled, collar base bowl
- _____ 84. Lime Vas Opal-Fenton Dragon and Lotus 9", ruffled, collar base bowl-Rare
- _____ 85. M-Fenton Dragon and Lotus 8 1/2", ICS, collar base bowl-Very nice
- _____ 86. Cobalt B-Fenton Dragon and Lotus 8", ICS, collar base bowl
- _____ 87. B-Fenton Little Fishes 9", round, flared, footed bowl-Most unusual shape
- _____ 88. Clambroth-Fenton Holly 9 1/2" Plate-One of the best
- _____ 89. M-Fenton Holly 9 1/2" Plate-Radium finish
- _____ 90. Scarce A-Fenton Holly 9 1/2" Plate-Great iridescence
- _____ 91. W-Fenton Holly 9 1/2" Plate-Covered in blues and pinks
- _____ 92. G-Fenton Holly 9 1/2" Plate-Nice
- _____ 93. B-Fenton Holly Hat-4 sides up
- _____ 94. Vas-Fenton Holly ruffled Compote-A beauty
- _____ 95. Vas-Fenton Holly 6 1/4" ruffled Hat-The best
- _____ 96. RED-Fenton Blackberry Spray JIP hat-Looks red from across the room
- _____ 97. RED-Fenton Blackberry Spray 7", square bowl-Ditto
- _____ 98. Brick Red-Fenton Sailboats 6" ruffled bowl-Loaded with irid.
- _____ 99. Pretty Red Amberina-Fenton Holly 9" ruffled bowl
- _____ 100. Red-Fenton Lotus and Grape Vt. Card tray shape Bonbon-Slag effect
- _____ 101. Cherry Red-Fenton Water Lily 5 3/4", ruffled, footed bowl
- _____ 102. Brick Red-Fenton Grape and Cable 7 1/2", 8 ruffle bowl
- _____ 103. Amber-Imp Pansy oval Dresser Tray-Scarce shape and color
- _____ 104. Radium Smoke-Imp Little Barrel
- _____ 105. Amber-Imp Open Rose 9" Plate-Superior example
- _____ 106. Smoke-Imp Shell 9 1/4" flat plate-Colorful and wonderful
- _____ 107. Electric P-Imp Windmill 4 1/2", deep, round bowl

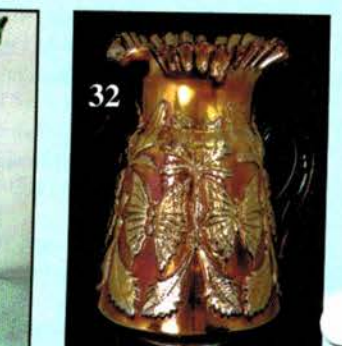
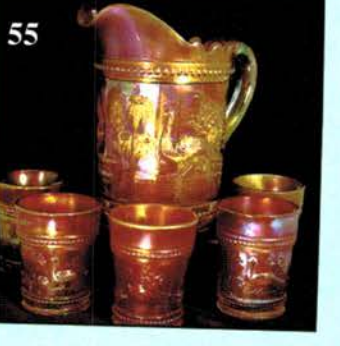
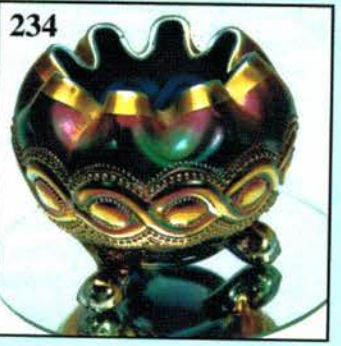
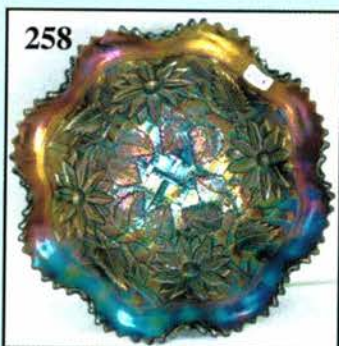
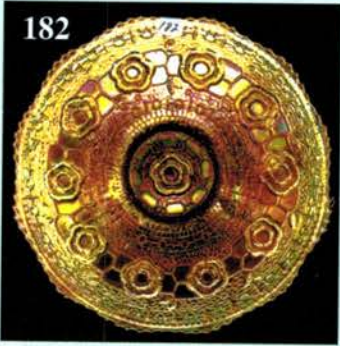
- _____ 108. Pumpkin M-Imp Shell and Sand 7 1/2" ruffled bowl
 _____ 109. Scarce Smoke-Imp Grape 10" handled Basket
 _____ 110. Show Stopping Electric P-Imp Homestead 10 1/4" Plate-
 Unreal color and detail
 _____ 111. Radium P-Imp Pansy 8 3/4" ruffled bowl-Hot radium
 finish
 _____ 112. Radium M-Imp Colonial ruffled Vase-A real looker
 _____ 113. Scarce G-Imp Grape Carafe-Silver and gold finish
 _____ 114. P-N Fruits and Flowers 9 3/4" ruffled bowl
 _____ 115. M-Fenton Orange Tree footed Fruit Bowl-A big boy
 _____ 116. B-Fenton Butterfly and Berry 9", footed, ruffled bowl-
 Electric hues
 _____ 117. Dark M-Fenton Two Flowers 11", ruffled, ball ftd bowl-
 Blues and pinks
 _____ 118. B-Fenton Two Flowers 9 1/4", ruffled, ball footed, deep
 fruit bowl-Blue irid.
 _____ 119. B-Fenton Two Flowers 7 3/4", round, flared, spat ftd
 bowl-First I've seen in this shape
 _____ 120. M-Fenton Panther 9", ruffled, footed master bowl
 _____ 121. M-Fenton Panther 5 1/2", ruffled, footed berry bowls-2
 x \$
 _____ 122. M-Fenton Panther 5" round, footed berry bowls-3 x \$
 _____ 123. M-Fenton Chrysanthemum/Windmill 10 1/2", ruffled,
 ball ftd bowl-Dark and nice
 _____ 124. B-Fenton Chrysanthemum/Windmill 11", ruffled, ball
 ftd bowl-Electric tints
 _____ 125. M-Fenton Chrysanthemum/Windmill 9 1/2", ruffled, ball
 ftd, deep fruit bowl
 _____ 126. B-Fenton Stag and Holly 7", spat ftd, deep, round nut
 bowl-very scarce shape
 _____ 127. M-Fenton Stag and Holly 10 1/2", ICS, ball ftd bowl
 _____ 128. Rich A-Fenton Little Flowers 8 1/2", round master berry
 bowl w/ 6 matching 5 1/2" berry bowls
 _____ 129. A-Fenton Stippled Rays 9 3/4", 3 in 1 edge bowl
 _____ 130. A-Fenton Stippled Rays 9 3/4", CRE, tri-corner bowl
 _____ 131. G-Fenton Stippled Rays 9 3/4", 3 in 1 edge bowl
 _____ 132. G-N Wild Strawberry 9 3/4", ruffled bowl
 _____ 133. A-N Stippled Rays 9 1/2", low 8 ruffle bowl
 _____ 134. A-Fenton Feathered Serpent 9 3/4", 3 in 1 edge bowl-A
 real beauty
 _____ 135. Outstanding M-Fenton Rustic 19" Funeral Vase-5 1/4"
 base, super 8" opening-Great, great color on this one
 _____ 136. Fabulous B-Fenton Rustic 18 3/4" Funeral Vase-5 1/4"
 base, 7 3/4" opening-Another of the top vases in this
 sale, it is a great one
 _____ 137. A-Fenton Rustic Vt. 15 3/4" mid-size Funeral Vase-4
 1/4" base, 5 1/2" top (9 flames)
 _____ 138. Rare G-Fenton Rustic Vt. 16 3/4" mid-size Funeral
 Vase-4 1/4" base, 5" opening (9 flames)-A radium gem
 _____ 139. B-Fenton Rustic Vt. 16 1/4" mid-size Funeral Vase-4
 1/4" base, 5 1/4" opening (9 flames)
 _____ 140. Scarce W-Fenton Rustic Vt. 15 1/2" mid-size Funeral
 Vase-4 1/4" base, 5" opening with 10 flames-truly
 beautiful iridescence
 _____ 141. W-Fenton Rustic 9 3/4" Vase-Only has 8 flames
 _____ 142. Scarce G-Fenton Rustic 10" Vase-8 flames
 _____ 143. G-Fenton April Showers 12 3/4" swung vase-Peacock
 Tail int.-Nice size and color
 _____ 144. B-Fenton Diamond and Rib 10" Vase-Extra nice
 _____ 145. G-Cambridge Inverted Feather Cracker Jar with Lid-
 Nice example
 _____ 146. Radium A-Cambridge Inverted Strawberry 7"
 Rosebowl-Scarce and nice!
 _____ 147. Blue Opal-Westmoreland Daisy Wreath 8" ruffled bowl-
 Undervalued beauty
 _____ 148A. Pastel M-N Grape and Cable stippled Bonbon-Way
 above average for color
 _____ 148. P-N Grape and Cable Vt. 9" Plate-Smooth exterior-Lots
 of purple irid.
 _____ 149. G-N Grape and Cable 9" Plate-BW exterior
 _____ 150. Magnificent P-N Grape and Cable Master Punch Bowl
 and Base with 12 punch cups--The KING (size) of
 Grape and Cable, this bowl and base has awesome
 electric iridescence all over inside and out
 _____ 151. P-N Grape and Cable small size Punch Bowl and Base-
 Great color, has internal fracture on bowl
 _____ 151A. P-N Grape and Cable small size Punch base
 _____ 152. Lovely B-Fenton Orange Tree Punch Bowl and Base-
 Great set
 _____ 153. A-N Grape and Cable Vt. 8 1/2" ruffled bowl-Smooth
 exterior
 _____ 154. Lav-N Grape and Cable Vt. PCE Bowl-Smooth
 exterior-Green and lavender stretchy irid.
 _____ 155. Lav-N Grape and Cable 8 3/4" ruffled bowl-Smooth
 exterior-Another scarce and pretty piece
 _____ 156. P-N Grape and Cable covered Compote-Fantastic
 electric example
 _____ 157. P-N Grape and Cable Sweetmeat covered Compote-All
 time favorite
 _____ 158. Rare Ice G-N Grape and Cable Banana Bowl-Pastels
 galore!
 _____ 159. Stunning B-N Grape and Cable banded, stippled Banana
 Bowl-High voltage electric!
 _____ 160. Superb P-N Grape and Cable 10" ICS Bowl
 _____ 161. W-N Grape and Cable 10 1/2" ICS Bowl-Radium multi-
 color pastels
 _____ 162. P-N Grape and Cable Cologne Bottle w/ Stopper-
 Always in demand
 _____ 163. M-N Grape and Cable Pin Tray-Lots of pinks
 _____ 164. M-N Grape and Cable Whimsey Nappy from punch
 cup-Tri corner shape
 _____ 165. G-N Grape and Cable 10 3/4", ruffled master berry
 bowl-BW exterior-Scarce one
 _____ 166. P-N Grape and Cable 10 3/4", ruffled master berry
 bowl-BW exterior-Multi electric
 _____ 167. P-N Grape and Cable Vt. 8 3/4" ruffled bowl-Smooth
 exterior
 _____ 168. Dark M-N Springtime Butter Dish w/ Lid-Very nice
 _____ 169. Electric P-N Peacock at Fountain Creamer-WOW!
 _____ 170. Electric P-N Peacock at Fountain Butter Dish w/ Lid-
 Another WOW!
 _____ 170A. Teal G-Fenton for Singleton Bailey Good Luck 12",
 CRE Chop Plate-Limited production modern rarity-
 Emerald tints
 _____ 171. Great M-N Good Luck ruffled bowl-Rib ext.-Loads of
 yellow, blues and pinks
 _____ 172. Electric B-N Good Luck PCE Bowl-Rib ext.
 _____ 173. Scarce G-N Good Luck 9" Plate-BW ext.-Super
 example
 _____ 174. Spectacular Renninger B-N Good Luck stippled,
 ruffled bowl-Rib ext.
 _____ 175. P-N Good Luck ruffled bowl-BW ext.-Desirable color
 _____ 176. Electric B-N Good Luck ruffled bowl-Rib ext.
 _____ 177. M-N Good Luck ruffled bowl-BW ext.-Pinks, greens
 and yellows
 _____ 178. Pretty G-N Good Luck ruffled bowl-BW ext.
 _____ 179. Clambroth?-N Good Luck stippled, ruffled bowl-Rib
 ext.-Fantastic pastel hues





- _____ 180. Emerald G-Four Flowers Vt. 9 1/2" Plate
 _____ 181. Electric P-Four Flowers Vt. 9 1/2" Plate
 _____ 182. Great M-Fenton Captive Rose 9 1/4" Plate
 _____ 183. M-Fenton Peacock at Urn 9 1/2" Plate-Extra nice
 _____ 184. B-Fenton Peacock at Urn 9 1/2" Plate-Multi color jewel
 _____ 185. Pumpkin M-Fenton Peacock at Urn 8 3/4", 8 ruffle bowl
 _____ 186. W-Fenton Peacock at Urn 8 3/4", scarce 6 ruffle bowl
 _____ 187. G-Fenton Peacock at Urn 3 in 1 edge bowl-Unusual edge treatment for this pattern
 _____ 188. A-Fenton Peacock at Urn 9", 8 ruffle bowl
 _____ 189. Super G-Fenton Orange Tree Loving Cup
 _____ 190. Multi electric B-Fenton Orange Tree Loving Cup
 _____ 191. Scarce A-Fenton Orange Tree Loving Cup
 _____ 192. Fantastic B-Fenton Orange Tree Powder Dish w/ Lid
 _____ 193. Very Scarce A-Fenton Orange Tree Powder Dish w/ Lid
 _____ 194. Stupendous B-Fenton Orange Tree 9 1/4" Plate-Absolutely unreal iridescence
 _____ 195. W-Fenton Orange Tree 9 1/2" Plate-Covered with pastel blues
 _____ 196. G-N Grape and Cable Hatpin Holder--Very attractive piece
 _____ 197. Dark M-N Grape and Cable Hatpin Holder-Lots of pinks
 _____ 198. Dark M-Fenton Butterfly and Berry Hatpin Holder-Here's a tough one to acquire
 _____ 199. Lav-N Grape and Cable Hatpin Holder-Dark multi electric irid.
 _____ 200. Rare G-Fenton Orange Tree Hatpin Holder-This one is a beauty
 _____ 201. Stunning P-Grape and Cable Perfume Bottle w/ Stopper-Radium electric base
 _____ 202. Pastel AO-N Fruits and Flowers stemmed bonbon
 _____ 203. Pumpkin M-N Fruits and Flowers stemmed bonbon
 _____ 204. G-N Fruits and Flowers stemmed bonbon-Lots of pinks
 _____ 205. G-N Thin Rib Vt. 11 3/4" Vase-Starred base with pulled tips
 _____ 206. Outstanding P-N Thin Rib 12 3/4" mid-size Funeral Vase-6" opening
 _____ 207. Scarce W-N Thin Rib 11 3/4" mid-size Funeral Vase-Lots of blues and pinks
 _____ 208. M-N Thin Rib Jester's Cap 7 3/4" Vase-Rare shape
 _____ 209. G-N Tree Trunk 13 1/4" mid-size Funeral Vase-6" opening, great piece
 _____ 210. Electric P-N Tree Trunk 12 1/2" mid-size Funeral Vase-5 3/4" opening
 _____ 211. Electric B-N Tree Trunk 10 3/4" Vase
 _____ 212. Ice B-N Tree Trunk 11" Vase-Another rarity
 _____ 213. Superb M-N Tree Trunk 11" Vase-Radium beauty
 _____ 214. AO-N Tree Trunk 10" Vase-Rare find, marigold overlay
 _____ 215. Scarce Ice G-N Tree Trunk 10" Vase
 _____ 216. P-N Tree Trunk 6 3/4" squatty Vase-Great size
 _____ 217. AO-N Diamond Point 11" Vase-Opal top to bottom
 _____ 218. Scarce Ice G-N Diamond Point 9 1/4" Vase
 _____ 219. Rich M-N Daisy and Drape Vase-Cupped in top
 _____ 220. AO-N Daisy and Drape Vase-Flared opening
 _____ 221. W-N Daisy and Drape Vase-Cupped in top
 _____ 222. P-N Near Cut Goblet-How many have you seen?
 _____ 223. Ice G Vas-Fenton 2-Row, Open Edge 6", ICS Bowl
 _____ 224. Aqua-N round Bushel Basket with pastel opal handles
 _____ 225. W-N 8-sided Bushel Basket-Frosty
 _____ 226. M-N 8-sided Bushel Basket-Pretty iridescence
 _____ 227. W-N round Bushel Basket-multi-pastel irid.
 _____ 228. Dark M-N round Bushel Basket
 _____ 229. Electric B-N round Bushel Basket
 _____ 230. Smoky Blue-N round Bushel Basket-Very different color with lavender tints
 _____ 231. Outstanding AO-N round Bushel Basket
 _____ 232. Rare G-N round Bushel Basket
 _____ 233. Lav Horehound-N round Bushel Basket-Very pastel
 _____ 234. B-N Beaded Cable Rosebowl-Unusual and attractive iridescent treatment
 _____ 235. G-N Beaded Cable Rosebowl-Rayed interior
 _____ 236. Ice G Opal-N Beaded Cable Rosebowl-Rare and beautiful
 _____ 237. P-N Beaded Cable Rosebowl-Rayed interior
 _____ 238. Scarce Aqua-N Beaded Cable Rosebowl-Beautiful irid.
 _____ 239. Frosty W-N Beaded Cable Rosebowl
 _____ 240. Electric B-N Leaf and Beads Rosebowl
 _____ 241. Great AO-N Leaf and Beads Rosebowl-Always in demand
 _____ 242. Emerald G-N Leaf and Beads Rosebowl-Sunflower interior
 _____ 243. W-N Leaf and Beads Rosebowl
 _____ 244. G-N Fine Cut and Roses Rosebowl-Plain interior, nice piece
 _____ 245. Super G-N Wild Rose Nut Bowl-Scarce and desirable
 _____ 246. W-N Drapery Rosebowl-Frosty
 _____ 247. M-N Drapery Rosebowl-Dark and nice
 _____ 248. Scarce Ice B-N Drapery Rosebowl
 _____ 249. Radium Ice B-N Drapery tri-corner candy dish
 _____ 250. Rare AO-N Embroidered Mums ruffled bowl-2+ inches of opal
 _____ 251. G-N Wild Strawberry 6" ruffled sauce bowl
 _____ 252. Dark M-N Strawberry PCE Bowl-Top quality
 _____ 253. M-N Sunflower 8", ruffled, spat ftd bowl-Nice pinks, greens and yellows
 _____ 254. AO-N Dandelion Mug-Great butterscotch overlay
 _____ 255. Dark P-N Dandelion mug-So nice
 _____ 256. Ice B-N PCE Nippon Bowl-Rib ext.
 _____ 257. Pumpkin M-N Poinsettia and Lattice 8 3/4", ruffled, footed bowl
 _____ 258. Dark P-N Poinsettia and Lattice 8 3/4", ruffled, footed bowl-Multi electric
 _____ 259. Super P-N Peacock at Fountain footed fruit bowl
 _____ 260. Scarce Electric B-N Peacock at Fountain footed fruit bowl-Factory separation between two points, no big deal
 _____ 261. Radium M-Fenton Stag and Holly 10 1/4", ICS, ball ftd bowl-Great eye appeal
 _____ 262. B-Fenton Stag and Holly 10 1/4", ICS, ball ftd bowl-A beauty
 _____ 263. Soft M-N Peacocks PCE Bowl-Rib ext.
 _____ 264. Renninger B-N Peacocks stippled 9" Plate-Rib ext.-Hot item
 _____ 265. Radium Ice G-N Peacocks 9" Plate-Rib ext.-Top shelf quality
 _____ 266. Electric B-N Peacocks 9" Plate-Rib ext.-Great one
 _____ 267. Nice M-N Peacocks 9" Plate-Rib ext.
 _____ 268. Scarce G-N Peacocks 8 3/4" Plate-Scarce smooth exterior
 _____ 269. W-N Peacocks 9" Plate-Rib ext.-Loaded with color
 _____ 270. Dark Ice B-N Peacocks 9" Plate-Rib ext.-Frosty irid.
 _____ 271. Electric B-N Peacocks PCE Bowl-Rib ext.
 _____ 272. Pumpkin M-N Wishbone 8 1/2", footed Plate
 _____ 273. Dark A-N Wishbone 8", ruffled, footed bowl
 _____ 274. Rare Electric B-N Wishbone 8", ruffled, footed bowl
 _____ 275. Dark P-N Wishbone 8 1/2", footed Plate-Very nice

- _____ 276. Rare Custard-Fenton Prayer Rug Bonbon-Marigold overlay
 _____ 277. W-Dugan Roundup 9 1/2", low 10 ruffle bowl-Lots of blues
 _____ 278. Excellent PO-Dugan Four Flowers 10 1/2" Chop Plate-Slightly turned up edge
 _____ 279. PO-Dugan Coin Spot ruffled Compote-Pretty and lots of opal
 _____ 280. BA-Dugan Grape Delight Rosebowl-Great electric iridescence
 _____ 281. W-Dugan Fishscale and Beads 7" Plate-Wowser
 _____ 282. Lav Horehound-Dugan Grape Delight Nut Bowl-Very rare color and shape
 _____ 283. W-Dugan Question Marks 7 1/4" pedestal plate-Blues and more blues
 _____ 284. Electric P-Dugan Question Marks 7" pedestal plate-Oh so nice
 _____ 285. W-Dugan Persian Garden 6" ICS Bowl-Basketweave ext.-Great pastel hues
 _____ 286. Outstanding Dark P-Dugan 9 1/4" Double Stem Rose dome ftd. Plate-The best!
 _____ 287. P-Dugan Stippled Petals 9 1/2" Banana Shape Bowl-Super electric
 _____ 288. Dark P-Dugan Six Petals tri-corner 7" Bowl-Rainbow electric
 _____ 289. Dark P-Dugan Six Petals 8 1/2", 6 ruffle bowl-Great color
 _____ 290. P-Dugan Dogwood Sprays 9 1/2", 10 ruffle, dome ftd bowl-Multi electric
 _____ 291. P-Dugan Flowers and Frames 9", 10 ruffle, dome ftd bowl-Ditto
 _____ 292. P-Dugan Cherries 8", 10 ruffle, ball ftd bowl-Electric-Pattern inside and out
 _____ 293. Lav Horehound-Puzzle stemmed Bonbon-Floral and Wheat ext.-A great, scarce find
 _____ 294. P-N Strawberry 8 3/4" ruffled bowl-Smooth exterior-Nice
 _____ 295. P-N Star of David and Bows ruffled, dome base bowl-Above average
 _____ 296. Scarce P-N Butterfly Bonbon with threaded exterior
 _____ 297. Electric B-N Grape and Cable Bonbon
 _____ 298. A-N Nippon 8 3/4" ruffled bowl-BW ext.-Good one
 _____ 299. P-N Greek Key 8 3/4" ruffled bowl-BW ext.-Fine example
 _____ 300. Scarce G-N Greek Key 9" Plate-BW ext.
 _____ 301. Pumpkin M-N Greek Key 8 3/4" ruffled bowl-BW ext.-It's a keeper!
 _____ 302. Frosty W-N Three Fruits Medallion 8 3/4", ruffled, dome base bowl
 _____ 303. Pastel M-N Three Fruits 9" Plate-BW ext.-Yellows and blues
 _____ 304. Electric B-N Three Fruits stippled 9" Plate-Rib ext.
 _____ 305. P-N Three Fruits 9" Plate-BW ext.-Extra nice
 _____ 306. Rare Sapphire-N Three Fruits stippled 9" Plate-Rib ext.
 _____ 307. M-N Three Fruits stippled 9" Plate-Rib ext.-Very nice
 _____ 308. Blue Opal-N round Bushel Basket-Not iridized
 _____ 309. M-N round Bushel Basket
 _____ 310. Ice G-N round Bushel Basket-Scarce color
 _____ 311. B-N round Bushel Basket-Blue and gold exterior iridescence
 _____ 312. B-N round Bushel Basket-Silver and gold exterior irid.
 _____ 313. Soft B-Fenton Peacock and Grape 8 1/2", ruffled, collar base bowl
 _____ 314. A-Fenton Thistle 8 3/4", 3 in 1 edge bowl
 _____ 315. G-Fenton Thistle 9", 6 ruffle bowl
 _____ 316. B-Fenton Captive Rose 9", 6 ruffle bowl
 _____ 317. G-Fenton Autumn Acorns 7 1/2", ICS Bowl-Scarce shape
 _____ 318. G-Fenton Vintage (Grape) 8 1/2", 3 in 1 edge bowl
 _____ 319. Rare Amber-Fenton Horse Medallion JIP footed bowl-Very pretty
 _____ 320. Electric P-Imp Diamond Lace 9 1/4", ruffled bowl
 _____ 321. Dark Ice B-N Nippon PCE Bowl-Rib ext.-Blue high-lights
 _____ 322. Electric B-N Leaf and Beads Rosebowl-Killer color
 _____ 323. W-N Rose Show ruffled bowl-Great blue irid.
 _____ 324. P-N Rose Show 9 1/4" Plate-Multi electric
 _____ 325. Rare Lime Ice G-N Rose Show 9 1/2" flat plate
 _____ 326. Scarce G-N Rose Show 9 3/8" Plate-Very desirable
 _____ 327. Renninger B-N Rose Show Vt. ruffled bowl-Top shelf color
 _____ 328. Pumpkin M-N Poppy pickle dish-Lots of pinks
 _____ 329. G-N Poppy pickle dish-Outstanding
 _____ 330. Scarce W-N Poppy pickle dish
 _____ 331. Pastel Violet-N Poppy pickle dish-Here is a difficult color to find
 _____ 332. B-N Poppy pickle dish-Electric hues
 _____ 333. Rich M-N Poppy Show ruffled bowl
 _____ 334. Scarce P-N Poppy Show ruffled bowl-Multi electric
 _____ 335. P-N Hearts and Flowers 9 1/4" Plate-A nice one
 _____ 336. B-Fenton Persian Medallion 8 3/4", ruffled bowl-Bearded Berry exterior
 _____ 337. A-Fenton Vintage (Grape) 7 1/4", 6 ruffled bowl
 _____ 338. B-Fenton Holly 9", 3 in 1 edge bowl-Unusual shape for this pattern
 _____ 339. P-Imp Jewels Stretch 5" flared vase-Iron Cross Mark-Art glass iridescence
 _____ 340. Super Cobalt B-Stretch art glass 10 1/2" bulbous vase-Very pretty
 _____ 341. G-Fenton April Showers 11 3/4" Vase
 _____ 342. G-Fenton Rustic 9 1/4" Vase
 _____ 343. M-Cambridge Inverted Feather ruffled Parfait-Interesting piece
 _____ 344. Electric B-Fenton Vintage (Grape) Fernery Bowl
 _____ 345. B-Fenton Holly Goblet shape Compote
 _____ 346. P-N Peacock at Urn 5 1/2" ICS bowl-Very nice
 _____ 347. M-N Peacock at Urn 9 3/4", ICS bowl-Covered with blues and pinks
 _____ 348. P-N Peacock at Urn 10", ICS bowl-Great example
 _____ 349. W-N Peacock at Urn 10", ICS bowl-Loads of blues
 _____ 350. Rare Champagne-N Peacock at Urn 10 1/4" fully stippled ICS bowl
 _____ 351. M-Dugan Golden Grape ruffled bowl
 _____ 352. M-Fenton Chrysanthemum/Windmill 9", ruffled, collar base bowl
 _____ 353. Radium A-Fenton Peacock Tail 7" ruffled bowl
 _____ 354. A-Fenton Peacock Tail 5 3/4" round bowl
 _____ 355. P-Fenton Iris 7" ruffled compote
 _____ 356. Radium Smoke-Imp Three in One 8 3/4" ruffled bowl-Scarce beauty
 _____ 357. B-Fenton Grape and Cable 8", ruffled, spat ftd bowl
 _____ 358. B-Fenton Dragon and Lotus 8 1/2", ICS bowl
 _____ 359. M-Fenton Blackberry Spray 6 1/2" ruffled hat-Base nick
 _____ 360. BA-Hatpin-Penstar
 _____ 361. BA-Hatpin-Big Butterfly
 _____ 362. BA-Hatpin-Flower Arcs
 _____ 363. BA-Hatpin-Top O' The Morning
 _____ 364. PO-Dugan Cherries Banana Shape ruffled, footed bowl-2 inches of opal



- _____ 365. P-Westmoreland Strutting Peacocks Cream and Sugar with lids
- _____ 366. G-N Blossom and Shell 8 3/4", ruffled bowl-Plain interior
- _____ 367. A-Fenton Coin Dot 8" ruffled bowl
- _____ 368. G-Fenton Blackberry Bramble ruffled compote
- _____ 369. M-Dugan Golden Harvest Wine glass
- _____ 370. M-Imp Octagon 9" bowl
- _____ 371. M-Dugan Fishscale and Beads 7" ruffled bowl
- _____ 372. P-N Lustre Flute 5" ruffled hats-Scarce color-Choice A or B
- _____ 373. G-Fenton Stippled Rays card tray shaped bonbon
- _____ 374. A-Fenton Stippled Rays 4 sides up bonbon
- _____ 375. Radium G-N Paneled 8 1/4", ruffled bowl
- _____ 376. M-Serpentine Rose footed Rosebowl (English?)-Rare find
- _____ 377. M-N Stippled Rays PCE Bowl
- _____ 378. M-Fenton Sailboats 5 1/2" round bowl
- _____ 379. M-Imp #393 pattern Goblet
- _____ 380. M-Imp Optic Flute Sherbet-Radium and dark
- _____ 381. M-Westmoreland Prisms Compote
- _____ 382. M-Fenton Holly 6 1/2", CRE Hat-Top flattened out
- _____ 383. M-Fenton 3" nut cup
- _____ 384. Books-Hartung comb bound books (11)
- _____ 385. Books-Hartung comb bound books (7)
- _____ 386. Books-Rose Presznick books (5)
- _____ 387. Books-Minnie Watson Kamm on pattern glass pitchers (9)
- _____ 388. Books-Ruth Clark on iridized buttons (2)
- _____ 389. Book-Iridescent Hatpins-Jerry Reynolds
- _____ 390. Book-Carnival in Lights-Helen Greguire
- _____ 391. Books-On tumblers (3)
- _____ 392. Book-The Shapes of Things in Carnival Glass-Don Moore
- _____ 393. Book-Iridescent Stretch Glass-Kitty & Russell Umbraco
- _____ 394. Books-Three pocket guides by Edwards, various subjects
- _____ 395. G-Imp Grape Water Pitcher
- _____ 396. M-Imp Grape Water Pitcher
- _____ 397. P-N Smooth Rays 8 1/2" ruffled bowl
- _____ 398. B-Fenton Pine Cone 6" ruffled bowl-Very pretty
- _____ 399. M-Fenton Holly ruffled compote
- _____ 400. P-Imp Windmill 8" ruffled bow
- _____ 401. G-Fenton Ribbon Tie CRE bowl-Heat check
- _____ 402. BA-Dugan Wreathed Cherry Banana Bowl-Rim chip
- _____ 403. Elec B-N Fruits and Flowers stemmed bonbon-Base chip
- _____ 404. Rare Pastel M-N Peacocks stippled, ruffled bowl- Fracture on rim
- _____ 405. B-Fenton Orange Tree Hatpin Holder-Toe chips
- _____ 406. G-N Wild Rose footed bowl-Buffered feet
- _____ 407. Pumpkin M-Fenton Peacock and Grape spat ftd bowl- Large crack
- _____ 408. M-Fenton Acorn 7 1/2", ruffled bowl-Rim chips
- _____ 409. M-Dugan Persian Garden 6 1/4" Plate-Base chip
- _____ 410. G-Fenton Scottish Thistle ruffled compote-Acid spots
- _____ 411. M-Fenton 2-Row, Open Edge, JIP hat-Heat check in base
- _____ 412. B-Fenton Panther 4 3/4" round bowl-Toe chips
- _____ 413. A-N Strawberry 9" Plate-worn iridescence.

SEND ALL MAIL TO:

18350 Hunters Ridge Ct.
Boonville, MO 65233

For Free Color Catalogs & Information Write:
Mickey Reichel
18350 Hunters Ridge Ct., Boonville, MO 65233
or Call: 660-882-5292 days or
660-882-5283 evenings
E-mail: mreichel@AWK-SHN.com

WANTED - QUALITY CARNIVAL GLASS
AND ANTIQUES

*"We don't want all the Business,
Just Yours."*

WE DO AUCTIONS RIGHT!!

2005 CALENDAR

March 12, 2005 at Boonville

ANTIQUÉ GLASS, CHINA, FURNITURE & MORE

Mrs. Edward Oswald Estate

WATCH FOR DETAILS ON
WEBSITE FOR THESE UPCOMING EVENTS

REAL ESTATE - ON LOCATION

April 9, 2005 - 10:00 A.M.

8,000 sq. ft. Home

SPECIAL ADVANCED Post Card Collection

SPECIAL COIN & Related Auction

**SPECIAL OPALESCENT Auction &
Carnival Glass**

April 16, 2005

May 21, 2005

June 18, 2005

SPECIAL NOTE:

NO SUNDAY CALLS, PLEASE!

Winning Absentee Bidders will be contacted
Monday through Wednesday of the week following
the Auction!

Thank You!

